

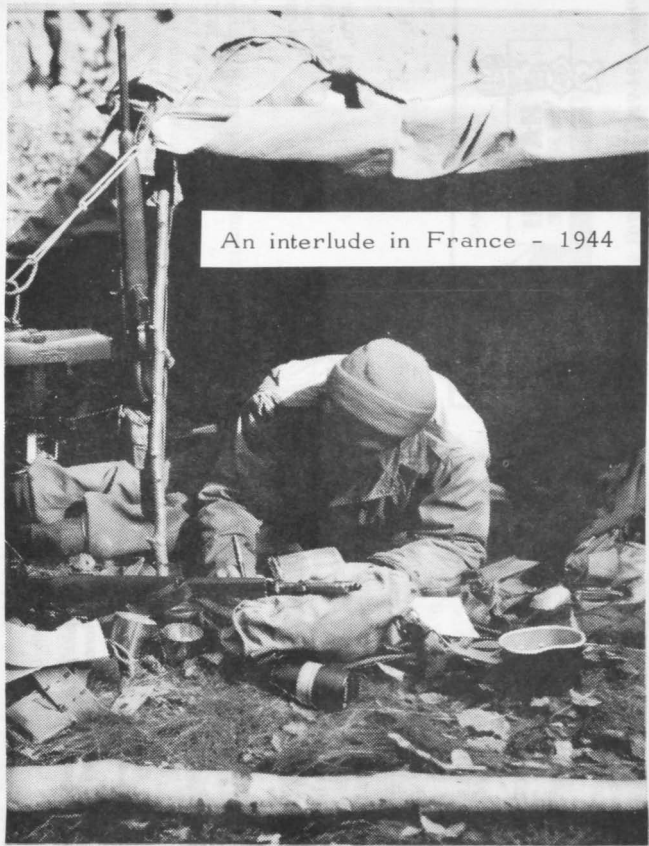


# Parade

"FOR CONTINUING SERVICE"



An interlude in France - 1944



Put yourself in this picture (you may even try to see how many pieces of equipment and supplies you can identify), then turn to the editorial page.

HAWAIIAN COLLECTION  
ELGGG LONOLUA LIBRARY  
UNIVERSITY OF HAWAII  
OCT 7 - 1966

“Keep Hawaii Moving With  
A Harmonious Team . . .”

Aug. 1966

HAWAIIAN

UNIVERSITY OF HAWAII  
LIBRARY



VOTE FOR  
KENNETH FRANCIS

(KAMUOOKALANI)

BROWN

LT. GOVERNOR - (D)

Law.  
169.31  
50th  
P84  
Closed  
Shelves

# MAILBAG

To all Former F Company Paesanos:

The F Company party is on:

Date: Sunday, 4 September 1966  
 Time: 6:00 P.M.  
 Place: Natsunoya Tea House  
 1935 Makanani Drive (Alewa Heights)  
 Cost: Approximately \$6.00 (includes tips)

This year Mike Higa and Roy Ikawa (phone 452-605) have been most helpful and have been calling those on Oahu by phone. Now, if you are living on Oahu and have not been contacted as yet, it may be that we do not have your address and phone number. We'd appreciate your calling to let us know if you plan to attend the party. In any event, call and leave your address and phone number so that we can place your name on the Former F Company member roster.

Now, for those of you on the outlying islands - if you plan to be in Honolulu on that date, you're most welcome to join us. Please call or write to Mike or me -

Kenneth (Mike) Higa (phone 773-644)  
 Apartment 26  
 3125 Wai'alae Avenue  
 Honolulu, Hawaii 96816  
 or

Hakaru Taoka (phone 624-575)  
 1337-C Loko Drive  
 Wahiawa, Hawaii 96876

Be seeing you all.

Hakaru

## Los Angeles

On August 10, we had a surprise visitor in town. Our Chick H. Furuye (B) got hold of the hot-line and reported that Baker's Dick Oguro-san of Honolulu was here for a day with Francis Miyake, brother of Howard Miyake (Hq.).

Chick got the ball rolling and arranged for a dinner at Ken Koichi Okamoto's (B) Seibu Restaurant, on Wilshire Boulevard. Welcoming Dick, Francis and a friend where Eric and Irene Abe, Chick and Matsu Furuye, Douglas Tanaka (B) and Sat Nakamura. Several others would have liked to meet Dick, but prior commitments prevented them from doing so.

We learned that Dick and Francis were on their way to attend a teachers' union convention in Chicago, by way of New York City. This delay enroute was to give Francis a chance to see the Big City for the first time, with Dick as his tour guide. After the convention in Chicago, they were expected to try their luck at making back their expenses in Las Vegas. Good luck, Dick and Francis, and may we see you again in the future!

## PUKA SQUARES

CHAPTERS ON THE GO! We tabulated the activities (other than routine monthly meetings) reported by the chapter correspondents in last month's issue of the Parade. This is the result:

- Charlie - Annual summer picnic, July 10  
 Outing (for men only), August 13
- Dog - Family campout, August 30-31
- Able - Picnic, July 31
- LA - Annual clamming and barbecue, June 19  
 Publication of 100/442 directory (distribution in September)
- Hawaii - Annual get-together of Dog bones (?)
- Bowling - Club 100 handicap league (continuing)
- Baker - Annual family picnic, June 28  
 corn-on-the-cob booth at the 50th State Fair
- Green Thumbs - Annual steak dinner, July 10  
 Field trip to Wahiawa, July 24
- Golf - Ace tournament, June 5  
 Kahuku, June 18

Looks as though everyone is real busy! While doing the tabulation, we also made a note of some of the comments of our correspondents:

Kazuto Shimuzu reporting on controversies going on in Charlie Chapter meetings. Could you be specific, Kazuto? Then, perhaps, other chapters could be equally stimulated.

Alekoki is always good for a thought or two and his reference to Dog Chapter member Francis Takemoto as "Taisho" is very appropriate.

Blue Nagasaki calls the move of Goro Sumida from Vineyard Street to Halawa as "A city slick to a country-jack." An apt reference.

Sat Nakamura says that he cannot find any Big Islanders over there in Los Angeles, and remarks that Big Islander "never leave Hawaii except to go on vacations. Nomadism is practiced only by those from Kauai, Maui and Oahu!"

Jim Maeda expresses the disappointment of one of the Big Island boys attending the anniversary luau here in Honolulu. "The crowd dispersed so fast after the feast and speech making that there wasn't any time for visiting old buddies." Jim also complains that he had not (at the time of writing his last column) received the Parade, and gently wonders whether the Puka-Puka boys working in the postal service had let him down. A valid complaint, Jim, but not against Uncle Sam's service or the boys. It's merely us again - a rut that we're trying to get out of.

DO says that although Baker "sold more corn than all previous years - that's a fact!", the chapter came in second best (at the 50th State Fair) to a ladies group "that was manning a hot dog booth, I believe it was! Auwe!" Auwe? Hot Dog! would have been better.

Richard Yamamoto says, of the Green Thumb's annual dinner, that "Kazuo Kamemoto used his special broiler to cook steaks soft and tender for those with special requirements, and Robert Aoki's specially prepared tripe stew was an instant hit." How come that these guys are always eating meats instead of greens?

**BASEBALL.** The Pirates are leading, but anything can happen in the National League. The San Francisco Giants are only a few percentage points behind, the

Dodgers a couple of games out. But the order could change swiftly. The race to the pennant could be as whacky and as dizzying as the '64 race when the Phillies, Reds, Cardinals, and the Giants were neck and neck to the wire, the Cardinals finally winning on the last day of the 162-game schedule. And where are our Islanders? As usual, they're run out of gas, after a fast start. Well, we can always look forward to next year.

AND POLITICS. The sudden blossoming of campaign signs tells us that October is not far away. With the large number of offices up for grabs this year, from the governorship on down to the school board, and including the two congressional seats, there should be room for most anyone who is willing to stand up to the "slings and arrows" of the campaign trail. We should see a very rapid buildup of the political war from here on in.

AND SPEAKING OF WARS. How big is our active fighting force? Some of you may have an interest in this question so we have extracted from a recent issue of the publication MILITARY REVIEW a summary of the active forces. This table presents the force structure to be supported by the 1966 budget, and compares this with the 1961 structure:

COVER, and EDITORIAL. There being nothing special to talk about, and since club secretary Herbert Yamamoto could think of no pressing problem, we reminisce a bit by printing for our cover a picture depicting a scene very familiar to all of us. We then close the scene by attempting to make a point in our editorial that wars are fought by people, and since people do not change, the situation and the conditions repeat themselves, war to war.

- Editor

Description	30 Jun 1961	30 Jun 1966
<b>Strategic retaliatory forces:</b>		
Intercontinental ballistic missiles (squadrons):		
Minuteman	-	17
Titan	-	6
Atlas	4	-
Polaris submarines	5	38
Strategic bombers (wings):		
B-52	13	13½
B-58	1	2
B-47	20	-
<b>Continental air and missile defense forces:</b>		
Manned fighter-interceptor squadrons	42	34
Interceptor missile squadrons (Bomarc)	7	6
Army air defense missile battalions*	49½	23½
<b>General purpose forces:</b>		
Army divisions (combat ready)	11	16
Army surface-to-surface missile battalions	42½	38
Army air defense missile battalions	26¾	33¾
Army Special Forces groups	3	7
<b>Warships:</b>		
Attack carriers	15	15
Antisubmarine warfare carriers	9	9
Nuclear attack submarines	13	31
Other	328	323
Amphibious assault ships	110	140
Carrier air groups (attack and antisubmarine warfare)	28	28
Marine Corps divisions-aircraft wings	3	3
Air Force tactical forces squadrons	93	119
<b>Airlift and sealift forces:</b>		
Airlift aircraft (squadrons):		
C-130 through C-141	16	41
C-118 through C-124	35	16
Troopships, cargo ships, and tankers	99	99
<b>Active aircraft inventory (all programs):</b>		
Army	5,564	7,624
Navy	8,793½	8,241
Air Force	16,905	13,706
<b>Commissioned ships in fleet (all programs)</b>		
	819	899



Editor	Ben Tamashiro
Correspondents:	
Able	Donald Nagasaki
Baker	Richard Oguro
Charlie	Kazuto Shimizu
Dog	Jits Yoshida
Headquarters	Toshi Kunimura
Medics	Kent Nakamura
Rural	Hakaru Taoka
Hawaii	Jim Maeda
Maul	Stanley Masumoto
Kauai	Kiyoshi Teshima
Stateside	Satoru Nakamura
Board	Robert Aoki
Green Thumbs	Richard Yamamoto
Golf	Fumi Taniyama
Youth Organization	Sandy Kawashima
Production & Distribution	Herbert Yamamoto
Publisher	Bea Imada
	Screen Process Hawaii

## KANRAKU TEA HOUSE



かんらく

**PLEASE MAKE YOUR RESERVATIONS EARLY**

Features:  
 Finest Japanese Food Prepared by Chef Direct from Japan  
 Fourteen Beautiful Waitresses in Kimonos Ready to Serve You  
 A Large Hall That Can Accommodate Over 1,000 Guests, or Can be Partitioned into Five Good Sized Rooms  
 Seven Additional Rooms Available for Small Parties

**Call 856-625**  
or 819-831

**750 KOHOU ST.**  
(By Kapaemahu Canal, Between H. King St. & Dillingham Blvd.)

CLUB 100 HANDICAP BOWLING LEAGUE  
SPECIAL AWARDS STANDINGS AS OF Aug. 12, 1966  
(6 quarters)

<u>DIVISION I</u>	<u>Points</u>
1. Bob Uehara (3)	301
2. Harry Hirata (1)	300
3. Ken Muroshige (11)	297
4. Haruo Torikawa (3)	296
5. Jack Hirano (4)	294
6. Eddie Ikuma (3)	292
7. Kiyu Uyeno (6)	292
8. Jim Inafuku (9)	290
9. Masa Kawaguchi (12)	290
10. Tom Matsumura (6)	289
11. Kaoru Matsumura (6)	286
12. Larry Amazaki (11)	284
13. Don Nagasaki (8)	282
14. Heiji Fukuda (10)	276
15. Roy Nakatani (12)	273

<u>DIVISION II</u>	<u>Points</u>
1. Uki Wozumi (10)	299
2. Yutaka Inouye (7)	293
3. Paul Shirai (8)	291
4. Hajime Kodama (12)	289
5. Sakae Tanigawa (12)	288
6. George Zakimi (4)	284
7. Tony Kinoshita (1)	282
8. Stu Yoshioka (12)	280
9. Frank Fujiwara (11)	276
10. Mac Yoshikawa (8)	273
11. Bob Katayama (3)	268
12. Yasu Takata (9)	268
13. Goro Sumida (7)	261

<u>DIVISION III</u>	<u>Points</u>
1. Masa Awakuni (3)	296
2. Bob Takashige (9)	292
3. Lefty Tanigawa (10)	288
4. Hideshi Niimi (6)	288
5. Richard Yamamoto (5)	287
6. Hideo Ueno (4)	284
7. Sada Matsunami (7)	284
8. Masa Kawamoto (5)	279
9. Bob Takato (5)	278
10. Mary Yamane (2)	278
11. Roy Nakamura (6)	269
12. Sonsei Nakamura (11)	268
13. Tak Tak Takahashi (7)	254

<u>DIVISION IV</u>	<u>Points</u>
1. Isami Tsuda (10)	301
2. Hal Tamashiro (3)	292
3. Ken Nakasone (5)	285
4. Kaoru Yonezawa (5)	283
5. John Sakaki (7)	282
6. Elsie Tokunaga (2)	280
7. Wilfred Shobu (4)	279
8. Warren Iwai (5)	279
9. Chicken Miyashiro (5)	278
10. Isao Nadamoto (11)	264

<u>DIVISION V</u>	<u>Points</u>
1. Glenn Takata (9)	295
2. Grace Takashige (2)	295
3. Kaname Yui (8)	292
4. Carl Morioka (7)	291
5. Herb Yamamoto (1)	291
6. Masa Toma (12)	284
7. Hiromi Urabe (11)	283
8. Elaine Nakamura (2)	283
9. Esther Shimazu (2)	281
10. David Umeda (1)	281
11. Roy Nakayama (11)	279
12. Kengo Miyano (10)	273
13. Marshall Higa (3)	273
14. Joe Muramatsu (10)	256

<u>DIVISION VI</u>	<u>Points</u>
1. Albert Nitta (9)	303
2. Margie Higa (2)	292
3. Jimmy Oki (8)	288
4. Hideo Doi (6)	281
5. Tommy Nishioka (8)	274
6. Shigeru Inouye (4)	270
7. Pat Akimoto (1)	270
8. Eugene Kawakami (8)	268
9. Jack Kuiuoka (9)	267
10. Geni Masumotoya (4)	259
11. Don Kuwaye (6)	255
12. China Yamashina (1)	252
13. Tom Ibaraki (7)	251
14. Rinky Nakagawa (1)	248

50% Discount with wife  
for Club 100 member  
Membership card  
must be presented at  
at boxoffice



**NIPPON  
THEATRE, Ltd.**  
1378 S. BERETANIA ST.  
HONOLULU, HAWAII 96814



The secret of Japan's most flawless complexions . . .  
SHISEIDO, Japan's most luxurious cosmetics.

A trip to one of our stores makes a wonderful beginning to achieve a  
more beautiful you.

**SHISEIDO** TOKYO JAPAN  
Shiseido of Hawaii, Inc., 916 South Street, Honolulu, Hawaii

# HAWAII

TSUTOMU "BLUE" KUNISHI, (Co. F & A), a good soldier and friend of all laid down his tools upon this earth and received the call of His Maker, on Tuesday, August 9, at Seattle, Washington. Funeral service was held at Seattle, August 13. "Blue" was confined at the Veterans Hospital at Seattle for several weeks prior to his death due to kidney ailment. The deceased was born and raised at Papaikou, Hawaii, and was employed by the Hilo Electric Light Co., before moving to Seattle.

We offer our sincere and heartfelt sympathy to Mrs. Amy Kunishi in her bereavement. Mrs. Kunishi resides at 1820 So. Jackson, Seattle, Washington.

\*\*\*\*\*

**ANNUAL MEMORIAL SERVICE:** Hawaii Chapter's annual memorial service will be held at the Veterans Cemetery on Sunday, September 25, 1966, 10:00 a.m., it was announced by Motoyoshi Tanaka and Yasuo Iwasaki, co-chairmen of the affair. Details of the services will be announced later by the committee. Please mark this date down on your calendar.

\*\*\*\*\*

**HILO'S FLOOD:** Hilo not only has tidal waves from the ocean, but waves from the mountain. You should have witnessed the drums and drums (not buckets and buckets) of water coming down from heaven, and dried up creeks overflowing on Monday afternoon, July 25. Houses were washed down, a policeman got washed away, trees and plants were washed, automobiles got flooded, houses flooded and etc. You should have seen the printing papers that Jimmy Akamine sold to Hilo Printers scattered all over Hilo's bayfront after the flood.

Harumi Mende (D) home and rental units got flooded. Mr. and Mrs. Larry Tanimoto and Skinny Hagiwara were cleaning up Hilo Printers for about a week to put the shop back in operation.

Who will be next for the Big Island, Madam Pele??

\*\*\*\*\*

To BOB ISHIMARU and his family our sincere sympathy for the loss of their father... We hope that Sats Nakamura of Los Angeles guided WALTER KADOTA and family away from Reno and Las Vegas. We know that Walter enjoys seeing shows... TAKAO MIYAO and family are back from Japan after their visit there... MR. and MRS. KOICHI KAWAOKA are now on tour in Japan... We learned that CHARLES MIZUGUCHI and family of Kahului, Maui visited Japan this summer.

## SELECT UNDERWRITERS, LTD.

University Square Bldg. 2615 S. King Street  
PHONE 990-041

### ALL LINES OF INSURANCE

Seian Hokama (A) Sonsei Nakamura (B)  
Frank Ikehara (A) John Sakaki (A)  
Naoji Yamagata (A)

This was Charlie's second visit to Nippon... General Francis Takemoto came to Hilo for the Hawaii National Guard golf tournament. Since we didn't see Francis' name as one of the winners his game must have been bad, Francis, Bob Ishimaru, Kazuma Hisanaga, George Taketa and a few others in Hilo, are ready to give you some golf lessons... The most confused thing on the Big Island at the present time is the proposed County Charter, which the people on the island voted on recently. We do hope that Kauai and Maui counties do better... ROGER KAWASAKI, office manager of K. Taniguchi is busy these days getting ready to relocate in the new super market building located at Kanoehueha and Puaineko Streets... Honorary member, J.M. HIRANO moved into his new Stationers' Corp. building located on Kanoehueha Street near the airport... Hilo is growing!

Jim S. Maeda

## ABLE

September is the month when the children return to school - here and abroad but for the club members, it's Memorial Service for our fallen members. Yes! It will be held on September 25, last Sunday, at Punch-bowl. So why don't you change your usual Sunday routine by coming out early and help your chapter representatives (Paul Shirai - Able) to place flowers on the graves of your comrades. Boy! What a feeling you have all day and throughout the year and still enjoy "Freedom" of our great country.

Under sunny skies and pleasant swimming water, over 150 members, wives and children turned out for the annual picnic which was held at Ken Okamoto's place out Waimanalo Beach on July 31, who was co-chairman with Tom Fujise. It was an "everybody was a winner" affair where no family went home empty-handed. Wearing the white "Chef" cap for the day was Yoshio Saito - with lots of help from the wives who provided lots of food and refreshments. Mr. and Mrs. Alfred Arakaki came out with interesting and dead-laughing games for all ages that there were more than enough prizes and the children were rewarded with necessary school supplies while the adults looked like they went through a special sale at a big department store - when the day was over.

Did you look for your name in the July issue on the 1966 dues list? If not listed, check your receipt or you must have forgotten to mail in your dues. Help push the Able Chapter total over 100 by sending in your dues. Pay now or will be harder and larger next year.

Blue Nagasaki

**CLUB 100  
21st Annual  
Memorial  
Services**

**Sunday  
Sept. 25, 1966  
10 A.M.**

**Punchbowl  
National  
Memorial  
Cemetery**

**European  
Tour Meeting  
Thurs Sept. 8  
7.30 P.M.  
Clubhouse**

---

**KUHIO AUTO REPAIR**

TONY KINOSHITA "D"  
GENERAL AUTO REPAIR

WE SPECIALIZE IN  
BODY & FENDER WORK

2457 S. KING ST. PHONE 923-925

---



**BOB'S UNION  
SERVICE**



153 Oneawa St., Kailua  
Phone 250-262 Bob Kondo (D)

---

**HARRY ASATO PAINTING, INC.**

Residential - Commercial - Industrial

3006 Ualea Street

Phone 816-526

---



**SMILE SERVICE  
STATION**

Phone 856-933

444 Waialeale Road

---

BE REALLY REFRESHED



Enjoy that  
**Refreshing  
New Feeling**  
with Coca-Cola!



"COCA-COLA" AND "COCOA" ARE REGISTERED TRADE MARKS



**AirTo EXPRESS**

INTER-ISLAND—WORLD-WIDE AIR CARGO

PHONE 562-277

525 HALEKAUWILA ST.  
Cor. Halekauwila & Kakaako



**"One Call Does It All"**  
Pick-Up and Delivery

BRANCH OFFICES: Hilo, Phone 3128 — Maui, Phone 729-745



**INTERNATIONAL SAVINGS**  
AND LOAN ASSOCIATION, LTD.

**TAKE A TIP FROM THE MANY FAMILIES  
WHO SAVE AT INTERNATIONAL SAVINGS...**

where your savings earn 4% dividend and your  
savings are insured up to \$10,000 by F.S.L.I.C.,  
an instrumentality of the Federal Government.

- Corner King and Bethel Streets. • Phone 511-311
- WAIPAHU BRANCH: 94-801 Farrington Highway, near Depot Road
- HILO BRANCH: 32 Kalakaua Street

HAWAII'S OWN CHERRY BLOSSOM STATION

dial 1210

**RADIO KZOO**



The only Japanese-English  
broadcasting in Hawaii

Bridging young and  
senior generations with  
• News • Features • Interviews  
• Modern & Traditional programming

Hoover Tateishi, Manager • Radio KZOO  
250 Ward Avenue, Honolulu • 587-817



# Editorial THE INDIVIDUAL SOLDIER - Key to Success

"Man has been trying to get off the ground for ages. He hoped for wings, but he got an armchair in a cockpit or cabin. Now, he has the potential of being a missile thrust up in the air. But militarily, he is still not free of the ground for actual fighting."

This is a quote from an article in the current issue of the MILITARY REVIEW magazine which is pub-



lished by the U. S. Army Command and General Staff College. The article is titled "Cheap Solutions for Winning Wars?"

The article discusses "bargain-basement" solutions for winning wars, and questions whether these are bargains in wars fought by remote control, cheaper manpower and more firepower, superiority by new maneuvers and mobility, every soldier a flying platform, and electronics warfare.

Even the possession of nuclear weapons presents its own problems and threats to those who use it.

Colonel Robert B. Rigg, the author of the article, quotes Liddell Hart who estimates that to hold a kilometer of front in battle, approximately 20,000 men were required around 1800, about 12,000 in 1870, 2,500 in 1917, and less than 1,000 today. "In a sense, then, war has gradually become more dispersed and remote controlled because casualties are inflicted at longer ranges and more casualties are produced by indirect weapons. This makes combat no less deadly because progressively there have been fewer places to hide."

It is at this point that we return to our compadre pictured on the cover. Will such an interlude, in which our compadre has a chance to pitch his tent and take a break, be passe in some future war? Will there be no place to rest or hide? Could be, but we doubt it.

To fortify our doubt, we publish two pictures on this page, two pictures of combat in Vietnam. Take a close look at the terrain; take a close look at the faces of the GIs. Is the terrain any different from the terrain of France which is pictured on our cover? And the faces of the GIs - they reflect the same anxiety and tenseness which were ours over 20 years ago.

Till such a time that someone can devise a means of taking a piece of ground, then holding it without implanting a human guardian on the piece of terra firma, the individual soldier with rifle in hand will continue to be the most important ingredient in any kind of war.

Ample Parking  
Waikiki Side

Enjoy Life! Eat and Drink at

## COLUMBIA INN

645 Kapiolani Blvd.

Top of the Boulevard

# Success

Recognizing the fact that winning a war requires a mix of many things, Colonel Rigg states that there are no cheap solutions for winning wars but we can, however, "afford extensive research and development programs in quest of better military superiority." The case for continued expansion in research and development is recognized, and unquestioned.

But the case for the individual soldier is made difficult at times because his cause cannot be necessarily advanced by the input of dollars alone, nor can his effectiveness be measured in terms of dollars.



Despite technological advances in weaponry and sophistication in movement capabilities, war ultimately comes down to the basic element which sees the soldier in his foxhole facing his enemy counterpart similarly entrenched.

It is therefore that we agree with Colonel Rigg that man is not free of the ground for actual fighting. Witness the actions in Vietnam. For all the troops and equipment we have poured in Vietnam, and for all the battles our troops have fought there, and for all the headcounts (of kills) that have been announced, we are still sitting on the same ground today as we started with some time ago.

It is in this vein of thought that we suspect that the kind of GI pictured on our cover, in the same kind of surroundings, with the same kind of problems, will be the man of the hour a hundred years from today.

- Editor

## Style Shoe Stores

SHOES FOR THE ENTIRE FAMILY

Dress Work

1133 Bethel 574310  
(Opposite Hawaii Theatre)

Play

1107 Fort 574870

3 Convenient Locations  
to Serve  
You

3588 Waiialae 747844

Kaimuki Branch-Queen Theatre Bldg.



**NORTH AMERICAN LIFE**  
INSURANCE COMPANY CHICAGO

GREGORY H. IKEDA, C.I.U.  
General Agent and Manager  
Hawaiian Agency

ALL LINES OF INSURANCE

NORTH AMERICAN INSURANCE  
AGENCY, LTD.

1210 AUAAHI ST., SUITE 105  
HONOLULU, HAWAII 96814

PHONE: 567-005

NOW SOLD AT  
SUPER MARKETS

*Sensational*

WE PREPARED IT  
NOW  
YOU ENJOY IT

**HOT CAKE &  
WAFFLE BATTER**

Made By

**LILIH BAKERY**

### Best Wishes to the Club 100

24 Brunswick Lanes  
Brunswick Automatic Pinsetters  
Tele Scores  
Tele Foul Line

Telephone Service Direct to Bowlers Benches  
Panoramic Spectator Seats  
Fountain Service to Bowlers on Lanes  
Free Instructions Available



**STADIUM  
BOWL-O-DROME**

Mom Stagbar  
Proprietor

820 Isenberg St., Phones 996-668 - 996-669

# NAKAKURA CONSTRUCTION CO., LTD.

HIROSHI SHIMAZU (B)

2621 WAIWAI LOOP

PHONE 812-854

can depend on us

for

- top quality
- wide assortments
- reliable service
- satisfaction
- friendliness
- cleanliness

Everyday  
LOW  
PRICES

**TIMES**

Super Markets

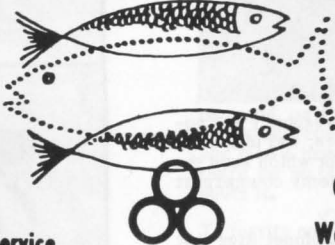
...Plus...  
**ROYAL  
STAMPS**

King St. Kapalama Waialae Niu Valley  
Kailua Waipahu Kaneohe



**Kamaboko  
Yokan  
Age  
Kushi  
Chikuwa  
Uzumaki**

**MITSUWA KAMABOKO FACTORY, LTD.**



121 Ahui St.

Phones 566 702 53 478

Charles Furumoto D

Charles Furumoto-D

We Wrap for Mailing



Free Gift Wrapping Service



# cpb

Let our competent and  
understanding loan officers

HELP YOU WITH:

- Personal Loans
- Home Improvement Loans
- Commercial Loans

SERVICE IS OUR BUSINESS



- Auto Loans
- Mortgage Loans
- Collateral Loans

**KAIMUKI BRANCH**  
3465 Waialae Avenue  
Phone 775-521

**HEAD OFFICE**  
50 North King Street  
Phone 506-781

**WAIKIKI BRANCH**  
2400 Kalakaua  
Phone 933-176

**MOILIILI BRANCH**  
2615 South King Street  
Phone 992-951

**MAKIKI BRANCH**  
1350 South King Street  
Phone 575-527

**KANEOHE BRANCH**  
45-1015 Kom. Hwy.  
Phone 242-131

**KALIHI BRANCH**  
2024 North King Street  
Phone 813-308

**HILO BRANCH**  
183 Koahe Street  
Phone 52-870

Member — Federal Deposit Insurance Corporation

## LIKES TO LEND MONEY

# BERNARD AKAMINE NOW AT GIBSON'S



Gibson Discount Center, what is it? Did Gibson buy out Family Fair Department Store? These are questions asked everyday.

Actually this store is owned and operated by the same people as before, now it is a franchised store of Gibson. Gibson, with headquarters in Segoville, Texas found that by buying right a merchant can become a success. The Gibson family started buying merchandise for one store and found it difficult to get the right prices. They struggled along until they acquired five stores, then they realized that by buying in quantity they were able to get better prices. Thus they used the Gibson name for co-operative buying. In Hawaii Gibson is store #250. Now when we place an order with Gibson, Gibson combines our order with the other 249 Gibson Stores and the prices are fantastic. Honoluluans will take notice of the low prices when all of the merchandise is Gibson-purchased.

In this fabulous store, there are two members of our club. Harold Oda is in the appliance department and Bernard Akamine in the furniture department. By coincidence both of them are from Baker Chapter. Club 100 members are especially welcome.

## Green Thumbs

The following members made the trip to Waianae on July 24 to visit the Kodama and Miyamoto orchid nurseries: Mr. and Mrs. Saburo Hasegawa, Mr. and Mrs. Moichi Okazaki, Mr. and Mrs. Kazuo Kamemoto, Mr. and Mrs. Thomas Taguchi and Guest, Mr. and Mrs. Robert Aoki, Sadashi Matsunami, Goro Sumida and Richard Yamamoto.

Though the weather was a bit muggy and rainy, we all enjoyed the trip and lunch. Kazuo Kamemoto who lives in Manoa commented that he would be working in such a light rain. Both Mr. Kodama and Mr. Miyamoto have really improved their orchid houses since last year. Many community pots of orchid seedlings were purchased and the members will be re-potting these in the near future.

On our way home, we visited Robert Aoki's Aiea mansion. He has a beautiful home and his saran screen house is just the thing to grow orchids under. He does have a large collection.

The club will participate in the annual Honolulu Orchid Society's orchid show to be held on October 14 thru the 16th. Our club has won many awards in the past and we look forward to this event every year. Members should be grooming their plants.

At the last 50th State Fair, Kazuo Kamemoto displayed his flowering orchid plants and won many individual awards. Congratulations. Kazuo is a steady winner throughout the year for his dendrobium orchids.

R. Yamamoto

# GOLF NEWS

Friendly layout of Ala Wai Golf Course the scene for the July Ace Tournament. As usual, a fine turnout was on hand. The Winner of this tournament was none other than Minoru Tamayose who has been making it a habit to get into the winner's circle. Sam Sakamoto made a valiant effort as did James Oshiro, both with fine 67's for second place.

## AUGUST ACE:

Winner	Minoru Tamayose	85-19-66
Tie 2nd	Sam Sakamoto	90-23-67
Tie 2nd	James Oshiro	77-10-67
4th Place	Richard Hamada	75- 7-68

## Low Gross Winners:

A Flight	Marshall Higa
B Flight	Greg Ikeda
C Flight	Robert Kadowaki

Back to our home course (Moanalua) on July 24 for the New Alakea Grill Trophy Tournament. It was a wet day only ducks would enjoy. The writer opened his umbrella on the first tee and had it opened for the full 18 holes. Others had umbrellas or raincoats on all the way. A non-golfer must think we golfers are crazy to play on such a day. But, a tournament must be completed, once it's started. Naturally play was difficult on such a day. Tom Nakamura, our "old steady" and Fumi Taniyama solved the muddy grounds to a nifty net 68's for first place tie. A playoff will be held at our next tournament.

## New Alakea Grill Trophy:

Tie 1st	Tom Nakamura	74- 6-68
Tie 1st	Fumi Taniyama	90-22-68
Tie 3rd	Tad Hirai	79- 8-71
Tie 3rd	Ken Nishi	85-14-71

## Low Gross Winners:

A Flight	Tony Oshita
B Flight	Warren Iwai
C Flight	Robert Kadowaki

# Patronize the Advertisers!

# BOWLING

High flying Lindy's (HQ) is pulling away from the rest of the Club 100 Handicap League teams when they registered a 3-1 victory over Hirose Painting (B) on August 12, 1966 at the Stadium Bowl-O-Drome. Masa Awakuni's 203-556 and Bob Uehara's 223-629 for the leaders and for the brush holders were Big Jim Inafuku's 226 plus 12 handicap equaled 238 and Al Nitta's 180 plus 28 handicap equaled 208.

Second place Nakatani Farm (B) had to be satisfied with a 2-2 split with Windward Furniture (C). For the farmers, Masa Kawaguchi's 518 and Masa Toma's 198 plus 28 handicap equaled 226 and for the "Wind", Warren Iwai's 177 plus 26 handicap equaled 203, Ken Nakasone's 203 plus 22 handicap equaled 225 and Richard Yamamoto's 212 plus 18 handicap equaled 230.

Heiji Fukuda's 191-527, Ken Miyano's 187 plus 29 handicap equaled 216 and Lefty Tanigawa's 192-527 of Kalihi Shopping Center (B) outclothed Holo Holo Apparel (D) 3-1. For the Holo-Holo, Harry "Steady" Hirata's 523 and David Uemda's 184 plus 31 handicap equaled 215.

Margie Higa's 175 plus 35 handicap equaled 210, Elaine Nakamura's 164 plus 36 handicap equaled 200, Grace Takashige's 189 plus 34 handicap equaled 223 and Elsie Tokunaga's 176 plus 30 handicap equaled 206 of Shiseido Cosmetics (wahine) took away one game but managed to split with Kanraku Teahouse (A) 2-2. Tom Nishioka's 168 plus 32 handicap equaled 200.

Kaname Yui's 217-532 and Blue Nagasaki's 227-548 for the "House".

Sada Matsunami's 183 plus 22 handicap equaled 203 and Carl Morioka's 191-527 of Denver Grill (A) went mile high to beat North American Life (C) 3-1. Kaoru Matsumura's 184-532 and Tom Matsumura's 199-547 for the losers.

After bowling a few frames, Mari's Hanaya Florist (Bn-HQ) and Ver's Termite (B) had to take the night off when they had to postpone their game due to mechanical failure.

## LEAGUE STANDING AS OF AUGUST 12, 1966

	Points
1. Lindy's (HQ)	49
2. Nakatani Farm (B)	44
3. Shiseido (Wahine)	39-1/2
4. Kalihi Shopping (B)	38-1/2
5. Windward Furniture (C)	38

Blue Nagasaki

# Bob Sato Coming Soon

# DOG

Dog Chapter's usual meeting on Tuesday, August 16, was postponed to Thursday. Despite the sudden change due to the passing of Martin Tohara's father, there were 16 members present for the Thursday meeting. Dog members again express deepest sympathy to Martin on his father's passing. The same goes to Conrad Tsukayama on his father's passing earlier this month.

The 1968 reunion of the Chapter is scheduled for Kauai. It's not too early to make plans, so Honolulu Dog members are anticipating requests from Kauai for kokua in liquor, food, or any other things needed for the 1968 reunion. President Nakayama is getting nervous. How about helping him out?

The overnite family outing was held on July 30-31 at Sunset Beach, thanks to the connections of Kazu Yoshioka. There were about 12 members present but only 4 wives decided to check up on their husbands' weekend activities. They were Helen Nikaïdo, Jane Matsunami, Ruth Tsutsui and Mildren Hosaka. The members voted unanimously to give special acknowledgement to Helen Nikaïdo for the big help in planning the overnite affair and seeing that everybody had enough pineapples for the weekend. Conrad Tsukayama was Chairman, but after planning everything, could not be present because of his father's critical illness. Thanks to Conrad, anyway.

Our deepest sympathy to Martin's and Conrad's families for their recent bereavement.

Two strong Dog members recently announced their candidacy for re-election to their respective offices this coming election. House Representative Robert Taira from the 14th District and Congressman Sparky Matsunaga for the House are actively campaigning and need the support of all club members.

Incidentally two other Club 100 members are running for offices: Sakae Takahashi (B) for Senator from the 5th Senatorial District and Howard Miyake for representative for the 14th District. They need your help.

Dog members are anxiously awaiting the housewarming invitation from Sadashi and Jane Matsunami who recently moved into the high-costing Tripler subdivision. His new address is 1642 Hakuaina Place.

Jits Yoshida



Musical Instruments  
Pianos — Appliances  
Large Selection  
of Records &  
Stereo Players  
Musical Instructions

Stu Yoshioka "B"  
Phone 777-711  
3457 Waiālae Ave.

## INVESTMENT CERTIFICATE

# 8%

yearly  
5 years  
maturity

In three categories to meet your financial needs . . . 5½% investment plan on 30 days maturity, 6% on 1 year, 7% on 3 years with quarterly interest payments.

PERSONAL — AUTO — COLLATERAL  
AND OTHER TYPES OF LOANS.

See Bob Sato

## MANOA FINANCE CO., INC.

2733 East Manoa Road  
Phone 982-121

## Windard Furniture Shop

FURNITURE MANUFACTURER

2690 Kam Hwy.  
(Near Kelly's Kahihi)

Phones:

Bus. 844-178  
Res. 241-174  
Stanley S. Teruya (C)

BEER — WINE — SAKE — LIQUORS  
CHAMPAGNE

## GEORGE'S LIQUORS

RETAIL GENERAL

314 Seaside Avenue

Ice Cubes Available

FREE DELIVERY

Phone 934-532

Geo. Kuwamura

OPEN  
10:00 A.M.

CLOSE  
10:30 P.M.



## LILIHAI FLOWERS

"Flowers for All Occasions"

MRS. HATSUNO TAKATANI, Prop

FREE DELIVERY

1474 LILIHAI ST.

PHONE 507-373

# BAKER

From the 22nd level, New Yorker Hotel, N.Y.

Turned out to be quite a day for us even though it was Friday, the 13th. Revisited the Statue of Liberty, American Stock Exchange, and enjoyed a late, late lunch in Chinatown, N.Y.

But tis enough for this personal stuff. Getting back to Baker Chapter affairs - from second hand info - the July Campout was a success although the attendance was below expectation (if that be the case - maybe we should revert back to a bachelors (stag) weekend affair. No!)

Stan Nakamoto, as usual, contributed to the dinner table. We caught some fish! (Was it one big one, Stan?) What's this, I hear - the wahines had to make the "Fuku-no-chili"? Where was Bob A-san? First timers - the Kodamas - learned the hard way. To be there early to grab the "rooms" available, having to sleep in the back of his station wagon!

The steaks were really enjoyable, and nobody starved. And everyone who attended the campout must have enjoyed it. Thank you, Roy Koda and Company - Y.Y. and K.M. and others for carrying this affair to a very successful close.

Was so "disappointed" with the attendance for the wives nite - Saturday nite at Tripler, that I snuck out early - so that nobody would see me crying! Guess it was one of those snafu things that happened because of circumstances beyond anyone's control and I guess it was my fault because I selfishly picked August 6, knowing that I would probably be mainland bound any time after that - summer session having concluded before that date too.

The thirty (give or take one more or less) really did enjoy the menu immensely, especially the King crab leglets - wasn't that so, Dr. and Mrs. Harry Hirasuna!!! But I still claim that J.M. and R.A. cannot be beat when it comes to eating. Even if R.N. were to challenge that statement! For the Stan Nakamotos, it was their first time there and there were no complaints!

From my reliable stool pidgeon, I have gleamed that there was a "Nijikai" - practically the whole gang that night ended up at Furuya's Nippon Theatre for the late late Adults' only special sex-appeal movie, and which proved so disappointing that J.M. slept in the theatre - sleep early "Joe".

Speaking about J.M., seems like R.N., past prexy, is getting to the stage of an AA prospect??? He and J.N. were the first to arrive - and to the bar!

In truth, I had to leave early to check up on a printing job that I had under fire. I am very happy everyone enjoyed this affair!

By the time this issue comes out, the sweet bread-chiffon sale will be on. This project was voted on at the last meeting, over a smoked chicken sale. We do need the moola. So please go out and sell - sell - sell. I have asked H.R. to give each 100 tickets. Hope you

will all sell 200 each. After all, the "sale" will last approximately 3 months!

With the airline strike in progress, never thought that the necessary connections could be made. Actually a Teachers' Union Convention in Chicago is what we are headed for, after a "delay-enroute" in New York.

Only two days before departure, reservations were confirmed for us. Incidentally, I am travelling with Mr. Francis Miyake, our president. Yes - he is the older brother of Howard - but an entirely different personality.

Arrived in L.A. 6:00 a.m. Wednesday morning. Made contact with Chick Furuye. Result - was "forced" to accept a dinner date to meet the L.A. boys for that evening. We met at Ken Okamoto's Seibu Restaurant - a top-of-the-building plush establishment. Hawaiian that I am, refused to wear a coat. As a consequence, had to wear a Hapi coat loaned by the management. Practically the whole party ordered the International Course. It was Fabulous.

Douglas Tanaka was there minus his "famous" mustache, plus a bumper crop of "snow" on his crown, Sat Nakamura, Chick and Matsu Furuye and Eric's Mrs. Abe (D Chapter replacement, besides myself and two of my guests, Mrs. Miyake and Greg Yamamoto - son of Miyake's friend at whose home we had parked our carcass upon our arrival.

After all these years, finally was able to meet with Sat Nakamura face-to-face and it was really most pleasurable.

I got this directly from the Horse's Mouth (C.F.) that if it wasn't for Sat, there would be No Baker Chapter L.A. nor 442nd Chapter L.A.! All I can say is that it really makes me feel real good inside to know we have friends and hustlers like Sats and Chick! It was a REAL REUNION!

Arrived in New York late Thursday afternoon after leaving L.A. 2:25 a.m. Thursday morning, having taken a circuitous southern route with stops in Dallas, Texas, Memphis, Tennessee and Nashville, Tennessee.

Planning on taking in the Music Hall program this evening so ----

Sayonara For Now  
DO

## FINANCE COMMITTEE REPORT:

This year again your Finance Committee, with the blessing of the Board of Directors, felt that Club 100 members should forego the idea of "selling" tickets, etc. and/or hitting the Community for donations and try to raise enough money by members' donations (active members as well as inactive members).

It may seem presumptuous to be asking kookia from the inactive members but our Club is always ready to help as much as we can any former member of the 100th Battalion (whether they are presently active members of Club 100 or not) when called on.

The Committee humbly solicits the help of all former members of the 100th Battalion.

### MEMBERS WHO HAVE PAID THEIR DUES:

August 25, 1966

#### Hq. Chapter

- 67. Ishii, I.
- 68. Oki, A.
- 69. Yukumoto, S.

#### Able Chapter

- 98. Inouye, Y.

#### Baker Chapter

- 95. Higa, T.
- 96. Oguro, R.

#### Charlie Chapter

- 68. Kidani, M.

#### Dog Chapter

- 52. Toyama, F.
- 53. Watanabe, C.

#### Rural Chapter

- 20. Inamasu, S.
- 21. Takehara, Y.
- 51. Hirata, H.

#### Hawaii Chapter

- 46. Kutsunai, K.
- 47. Mende, H.

#### Maui Chapter

- 51. Fukuyoshi, S.
- 52. Michioka, W.
- 53. Yamashiro, M.

#### Mainland

- 32. Sakato, H.
- 33. Yano, C.

## SUS Tours & Travel Service, Inc.

(Formerly Trans-World Tours & Travel Service, Inc.)

Authorized Agents for

ALL AIRLINES—STEAMSHIPS—TOURS—HOTELS

212 MERCHANT STREET, HONOLULU, HAWAII

(Near Main Post Office)

For Complete Information Call

PHONE 569-391



## SOLAR PAQUE

### Hawaii

"Tame The Sun"

Applied on any glass at home, apartment, store, office and auto windshield to...

• Reduce glare • Prevent fade • Minimize heat

FRANCIS S. OKUMOTO

FRANCHISED AGENT

(in Kuhio Auto Inc.)

2457 S. King Street Phone 996-965



### Holo-Holo APPAREL

MADE IN HAWAII

Manufacturers of Sportswear

BOB TAKASHIGE, Prop.

1428 E-F Makaloa St. Phone 990-948  
Honolulu 14, Hawaii



MARTIN TOHARA

Keep Clean with Lien

### LIEN CHEMICAL COMPANY

OF HAWAII

3047 Koapaka • Honolulu • 810-957

WEDDING • GLAMOUR • BABY PORTRAITS

## George Dean

PHOTOGRAPHY


GEORGE M. KURISU 'D'

Res. Phone 772-443

Phone 990-102.....2080-B S. King St.

Phone 273-335....94268 Depot Rd., Waipahu

WALLACE F. IWAO



HAWAII

SILK SCREEN SUPPLIES



Phone 994-929      2704 S. King St.





Our  
Phone  
Number....  
**575-961**

## **PITTSBURGH® PAINTS**

Distributed Exclusively by  
**LEWERS & COOKE**  
404 PIIKOI PKWY., HON.

Call us for the names of dealers  
in your neighborhood or see the  
Yellow Pages.

## An ideal Combination for Interior Painting...



Wall paint with . . . .  
\*Greater Hiding Power

- One coat covers
- Easier to apply
- Dries faster
- Goes further
- Exciting new colors

Odorless enamel for wood  
trim, kitchen and bathroom  
walls, furniture

- Easy to apply
- No brush drag
- Over 1,000 custom-mixed  
colors
- Extremely durable and  
washable

## **CLUB 100**

520 KAMOKU STREET HONOLULU 14, HAWAII



FOR CONTINUING SERVICE

**Non-Profit Organization  
U.S. POSTAGE**

**PAID**

Honolulu, Hawaii  
Permit No. 158