

If you want today's News, to-day you can find it in THE STAR

THE HAWAIIAN STAR.

The Hawaiian Star is the paper that goes into the best homes of Honolulu

DON'T BE A FAILURE—ADVERTISE

VOL. XI.

HONOLULU, H. T., SATURDAY, DECEMBER 5, 1903.

No. 3653

KUHIO IS ON COMMITTEES

DELEGATE FROM HAWAII NAMED ON HOUSE COMMITTEES OF POSTOFFICES AND POSTROADS—MANY CONFIRMATION AWAITING ACTION BY SENATE LAPSE ON ACCOUNT OF EXTRA SESSION ENDING.

Associated Press Cable to the Star.

WASHINGTON, D. C., December 5.—The House Committee appointments were announced today. Prince Kuhio Kalaniano'le, Delegate from Hawaii, is a member of the Committees on Post Offices and Postroads.

The House adjourned without setting any time, for reassembling, for the reason that the present extra session has been carried into the regular session of Congress which assembles on Monday. The Senate took similar action.

The result of this condition will be the lapse of the nominations of General Wood and 167 others who were not confirmed by the Senate. These nominations will have to be made a second time by President Roosevelt.

MITCHELL AIDS STRIKE.

Associated Press Cable to the Star.

DENVER, Colo., December 5.—John Mitchell, the labor leader, has advised the southern miners to continue their strike and encourages them with predictions of success.

NEW SPANISH CABINET.

Associated Press Cable to the Star.

MADRID, December 5.—A new cabinet has been formed with Maura as premier.

CONFERENCE AT SEOUL.

Associated Press Cable to the Star.

SEOUL, December 5.—Minister Allen today had a conference with the Emperor on the subject of opening Wiju. The conference was without result.

CHINA'S ARMY AND NAVY.

Associated Press Cable to the Star.

PEKING, December 5.—A commission has been appointed to reorganize and improve the Chinese army. Governor Chili has been appointed as the head of both the army and navy and will take active steps to place both on a better footing.

CALLED TO ANOTHER PASTORATE

E. S. MUCKLEY OF CHRISTIAN CHURCH GOES TO A LARGE CHURCH IN PORTLAND, OREGON

Rev. E. S. Muckley, pastor of the First Christian Church, closes his pastorate of the church at the end of the year, and will go at once to Portland, Oregon, to take the pastorate of the First Christian Church of that city.

Mr. Muckley came here about two years ago from Bellefontaine, Ohio, and succeeded Rev. A. E. Corey who went from here to enter missionary work in China.

The church which Mr. Muckley goes to serve, is a church with a membership of about 600, and a Sunday school of about 400, with three Christian Endeavor societies and other organizations for other branches of church work.

Mr. Muckley's resignation was tendered at the meeting of the officers of the church held last Wednesday. Mr. Muckley and his family expect now to sail for San Francisco by the Alameda, leaving December 30, and will go direct to their new home.

Mr. and Mrs. Muckley have made many friends during their stay here, all of whom will wish them success in their new home and work.

ANDREWS AND CARTER.

Governor Carter this morning had conferences with Attorney General Andrews regarding the work of the Attorney General's department. After the conference the governor expressed himself as surprised at the number of matters the department has to handle and said that he did not understand how all the court appointments of the week had been kept without some members of the department being in two places at the same time. Fourteen opinions were asked and five of them given during the week.

CHE FA BANKS MUST CLOSE

JUDGE LINDSAY SAYS THIS MORNING THAT HE IS GOING TO CHECK OPERATIONS.

Judge Lindsay says the che-fa banks have to close. This morning he issued his ultimatum. It was delivered in the case against Oyawa, charged with having che-fa tickets in his possession. It was proved that the defendant had been in the business of selling tickets. "There have been," said Judge Lindsay, "from time to time recently, a number of defendants charged with having che-fa tickets in their possession. They have been fined various amounts. You are worse than most of them for you are an agent of the che-fa bank. These banks have got to stop. I will therefore fine you \$75 and costs."

Nishiki was also charged with having che-fa tickets in his possession. He claimed that he went fishing and found the tickets and 25 cents under a rock. He might just as well have said that he found the articles in the stomach of one of the fish he caught, for the court did not believe him and fined him \$5 and costs.

Watanaba had no apologies to offer for having che-fa tickets and neither did Chan Tin, so both of them got off with a small fine of \$3 each, with costs.

RAWLINS DEPUTY.

Attorney General Andrews has commissioned W. T. Rawlins a deputy attorney general for the balance of this year and up to the time of his taking office as county attorney. He will assist in presenting the legislative investigation to the Grand jury.

NO BIDS FOR NEGATIVES.

The negatives of the late H. L. Chase who was one of the earliest photographers in the Hawaiian Islands, were offered at auction sale today by Will E. Fisher. There were no bids so the negatives were withdrawn from sale.

WHAT IS A COUGH?

A spasmodic effort to expel the mucus from the bronchial tubes. A cold causes a more abundant secretion of mucus, and when the lungs and bronchial tubes are inflamed, they are extremely sensitive to the irritation. Unless care is taken, the cold may result in pneumonia, which is swift and deadly. If the cold is a lingering one, the more leisurely but equally fatal consumption may set in. Do not neglect a cold or cough. Take Chamberlain's Cough Remedy. It always cures and cures quickly. Sold by all dealers. Benson Smith & Co., general agents.

TALKING MACHINES FOR XMAS. "Victor" talking machines will make excellent presents. New machines, new records, just received by Bergstrom Music Co. Cash or installments.

SALE OF WASH MATERIALS.

Monday, Tuesday and Wednesday at Sachs, 12 1/2, 15 and 20c. figured muslins, lawns and batistes in variety of patterns and colors. Special at 10c per yard.

Swindlers Were In Too Much Hurry

SEALED ENVELOPE USED FOR SECURITY BY THE HAWAIIAN MADAME HUBBERT FOUND TO CONTAIN ONLY BLANK PAPERS—A SCHEME FULL OF INGENUITY SPOILED BY TOO MUCH HASTE.

One of the sealed envelopes left with a local commercial house by the woman who appears to have been trying the famous Madame Hubbert swindle, has been opened and found to contain nothing but blank paper. The woman is a native Hawaiian and gives the name of "Shaw." The envelope was sealed with sealing wax and bore her name and she left it on deposit, stating that it contained San Francisco bank certificates of deposit and asking if she might draw against them.

It is said that the woman secured \$300 through her imitation of the scheme by which the famous Parisian swindlers secured millions. It is also said that she will be arrested on a charge of gross cheat unless the three

hundred is immediately returned. The Paris scheme was imitated further, it is said, in that the woman has employed a local attorney and it is believed to have been the intention for him to employ opposite counsel and for the two to engage in litigation over the possession of the supposed valuable sealed envelope, while the envelope was tied by bitter litigation, they hoped to use it as securities. Premature drawing upon its worthless contents spoiled the chances of effective work with the envelope and since blank white papers has been found to be the sole contents, all is over. The schemers couldn't wait until they had their scheme fairly started, before trying to draw money on their hopes.

SALARIES MAY DROP

DEPARTMENTS OF THE TERRITORIAL GOVERNMENT ALL FACING THE FINANCIAL SHORTAGE POINTED OUT WEEKS AGO BY THE STAR—NUMBER OF EMPLOYEES AND SALARIES MAY BE REDUCED.

The conferences between Governor Carter and the department heads under the new system of daily discussions have all been full of discussion of the need of careful financing. The estimated territorial income for the next year is from \$800,000 to \$900,000, while the monthly expense account is \$140,000. The department heads are calculating on how they can cut down, and there will have to be reduction of office forces and possibly reductions of salaries where it is legal.

These figures show that, as pointed out by The Star some time ago, the Territory has an income only about half of the monthly appropriations. In every department, therefore, the matter of retrenchment is being studied out.

A 30 Foot Tidal Wave

B. Kuhns of Hono-ka-hau, Maui, gives the following description of the tidal wave which struck that place on Sunday, November 29, coincident with the same phenomena observed at various other places in the islands, including the disturbances indicated by the tide gauge in Honolulu Harbor, and the damage to the track of the Oahu Railway along the north shore of Oahu.

Mr. Kuhns says: We had a tidal wave that did considerable damage. There was no wind and not a cloud in the sky. I was at church when the first wave came, about 10 o'clock a. m. There were two others. The third one was over thirty feet in height and it was very destructive to foundations. A number of us were on the beach and the rush of water almost caught us.

NOBODY BID ON THE STOCK

BUYERS DID NOT FANCY THE PRICE FOR C. BREWER & CO. AND HAWAIIAN AGRICULTURAL

There was a big crowd at the auction rooms of James F. Morgan today at noon to attend several sales of interest. The most interest was attached to the sale of 21 shares of C. Brewer and Company's stock and 100 shares of Hawaiian Agricultural Co. A minimum price of \$250 a share on the Brewer stock and \$175 on the Hawaiian Agricultural stock was named. While there were a number of people present who had evidently come to pick up possible bargains in stock, no body would start the bidding at these figures so no sales were made.

A piece of property with a frontage of 100 feet on Lunaliilo street and 100 feet on Matlock avenue was sold to John Walker the contractor for \$1650. The buy was considered a bargain as the property originally cost \$5,600.

Four residence lots on the Peninsula were to have been sold but the sale was postponed.

THE AUSTIN FORECLOSURE

LIFE INSURANCE POLICIES AND LAND IN HILO GO TO BISHOP & COMPANY.

Bishop & Company bid in all of the property sold today under foreclosure in the case of Bishop & Company vs. Marian E. Austin and C. R. Hemenway as trustee in bankruptcy of H. C. Austin. A five thousand dollar life insurance policy of Austin's of the year 1900 brought \$1,000 and another policy for the same amount dated 1894 brought \$250.

There was considerable bidding for the Hilo land formerly owned by the bankrupt. It was started at \$2,500 and raised quickly to \$3,500, after which L. J. Warren, who is with W. O. Smith, bid slowly against Bishop & Company until \$4,000 was reached. The bidders were going up by fifties until S. E. Damon suddenly made it \$4,500 and that ended the sale.

MONEY FOR MRS. MAHELONA

A HUNDRED DOLLARS ADDED TO THE FUND BY GENERAL COLLECTIONS.

A hundred dollars has been added to the fund for the relief of the widow of the late Officer Mahelona, who was shot as a Chinese chicken thief. The money was raised by Miss Davison and sent to A. L. C. Atkinson, one of the keepers of the fund, with the following letter:

"Hon. A. L. C. Atkinson, Judd Building Honolulu. Dear Sir: I beg leave to hand you \$100. (one hundred dollars) towards the fund for the widow of Officer Mahelona. This sum has been collected from the officials and employees of the Judiciary and Kapuwa buildings. There may be a few dollars more in a few days. The credit of collecting the money belongs to Miss Davison of the office of the Department of Education. I remain, yours faithfully,

"ALATAU T. ATKINSON, Superintendent of Public Instruction."

BRECKONS AFTER BALL

FEDERAL AUTHORITIES INVESTIGATING THE SHIPMENTS OF JAPANESE TO CALIFORNIA.

District Attorney Breckons has made an investigation of the cases of Japanese who have been employing Attorney J. P. Ball to secure for them transportation to California. The investigation was a result of the cable from Vancouver announcing that the last lot had been held up by the British immigration authorities.

This morning a number of Japanese who were alleged to have paid Ball money to get them to the Coast were seen by Breckons. The result is said to have been that a number of them got back the money they put up.

S. S. ALAMEDA. The S. S. Alameda will sail next Wednesday for the coast. Don't forget to mail one of our Hawaiian calendars as an all the year round remembrance. Wall, Nichol Co., Ltd.

WONDERS ON HAWAII

TWO VOLCANOES ARE IN ACTIVE ERUPTION WITH CONSTANTLY INCREASING FORCE AND MAGNIFICENCE—A METEOR OF SURPRISING BRILLIANCE PASSES ATHWART THE SKY OVER THE BIG ISLAND.

HILO, December 4.—At 11:51 p. m. Saturday a brilliant meteor passed over this island, the direction being from south to a little east of north. It was seen by the members of the Elks' lodge as they were leaving the hall after a social session. As it passed out over the sea, particles of green fire could be seen dropping from it and the sight was particularly grand. The speed was not rapid and, as one gentleman puts it, the meteor resembled an illuminated airship in the sky.—Hawaii Herald.

HILO, December 4.—The Hilo Tribune says: The activity at the Kilauea crater is on the increase. Large numbers of visitors are at the Volcano House and they all report a magnificent sight in Halemaumau. The Hilo people who prefer to stay at home have been favored with splendid views of Mauna Loa this week. Mokuawewe is doing herself proud, having been continuously active for two months.

The lava lake in the bottom of Halemaumau is now 300 by 125 feet in size and is not more than 650 feet from the surface. The lake is kept in commotion by one fountain, which works steadily. At times a second fountain plays.

Manager Bidgood has just made new measurements of the circumference of Halemaumau. He finds that it now measures 4391 feet, whereas a year ago it was only a little more than 3900. This increase in size is caused by a falling-in of the walls. The debris in the bottom, with the present outpouring of lava, has filled up a space of about 200 feet. The weather at the Volcano House yesterday was bright and clear. There will probably be an excursion at popular rates Saturday.

HILO, December 4.—The Hawaii Herald says:

On Tuesday morning there were two fountains playing in the lake that was about 200 feet in diameter. Mr. Bidgood has had a shed and wind-break built on the edge of the pit and has built a new trail to the scene. The pit has been gradually filling since last August until now its depth is not much about six hundred feet. The reflection from the lava is plainly seen from the Volcano House and combined with the glow from Mauna Loa summit the attraction at the Volcano House is great. Visitors to the crater yesterday morning report the extent of the lava increasing and that the pit is rapidly filling. It is probable that an excursion at popular prices will be made up in Hilo on Saturday, the party to remain at the Volcano House over Sunday.

Henry Beckley, A. C. Aubrey and Iona, a native guide, recently made the ascent of Mauna Loa to Mokuawewe from Humuula in twenty hours. They were the pioneers from that side of the mountain, no other persons, as far as known, ever having made the trip.

They rode their mules to the brink of the crater and camped on the snow. The weather was exceedingly cold and the members of the party suffered considerably. Young Beckley and his friends have made what is now known as the third trail to the crater, and the second where animals can be used the entire distance. Mr. Beckley writes that the activity in the crater at the time of his visit was about the same as when described by the first party that went up in October. He says, also, that the fire can be approached without having to climb down any precipices.

MR. DOOLEY ON CARTER'S NEW FRIENDS

"Carter's making man-ny new frinds," said Hennessey, laying aside a copy of the daily ex-Cooper.

"He's making some," said Mr. Dooley, "an' Rosenfelt made some fr him. They'se frinds an frinds. 'We've supported a diffrent lad fr th' job,' says wan iv th' new frinds, 'but after all our main frindship was fr th' office an' not th' man. Befure ye got it an' whin we thought ye never would, we knew ye was a mishnary, an imny iv th' native, a mofarchist, a mumber iv th' provishnal government an' both unHowine an' unAmerican. Ye favored centralized government on th' sly an' we knew it all th' time, though ye worked fr th' county bill. 'Twas a blow to th' nathritism iv th' commyoonity that an-ny lad with such a character should aspire to sit in th' footsteps iv an American gvnor.

"But since ye won th' office fr which we have gr-reat respect, ye've changed altogether. We're glad to see ye've become a thure American an' ar-re a frind iv th' Howine. 'Tis a pleasure to us to tell ye ye've won th' confidence iv th' daypartmint. Th' sthrong an' shturdy Americanism iv ye're leadership iv th' provision government has always commanded our admiration. Ye ar-re a good gvnor already an' ye're term is an assured success with our support an' ye're support iv us. Ye're speech was a good wan. Abass Cooper! Thank ye again, an' here's an office rate car-rd which ye can carry with ye."

"An' there ye ar-re, Hinnissey. 'Tis th' way iv th' world, as Hogan would say, an' nothing succeeds like th' rolling snowball iv success."

"'Tis a good thing fr an-ny man to make frinds," said Hennessey, "especially in politics."

"An' th' rolling snowball," continued Mr. Dooley, ignoring the interruption, "gathers up man-ny a lump iv adulteration an' dirt with its accumulation iv snow."

PIONEER BUILDING & LOAN ASSN

The Pioneer Building and Loan Association of Hawaii pays its withdrawing members at the end of six months of a year not only the cash paid in by them, but Seventy-five (75%) per cent of the profits.

It retains Twenty-five (25%) per cent of the profits for the benefit of the Stockholders remaining.

The Twenty-seventh Series of Stock is now open for subscription. ONE DOLLAR per month per share. A. V. Gear, Secretary, 122 King Street.

Twenty-five cents pays for a Want ad in the Star. A bargain.

HOLIDAY GAMES.

Fifty kinds of new holiday games by price. Toy, wagon, doll, coaches, wheelbarrows. A. B. Arleigh & Co., Fort street.



Christmas Slippers

We are prepared for the Holidays with a specially selected stock for gentlemen.

There is nothing else a man will appreciate like the comfort of a pair of slippers.

Handsoms variety in MONKEY, LIZARD, SEAL and ELKS SKINS, CALE, VICI KID, RUSSET and CHROME LEATHERS.

Prices from \$1.50 upwards.

MANUFACTURERS' SHOE CO LTD 1051 Fort Street

Mail orders promptly filled.

Yes, Another

Shipment of fresh dog cakes and puppy food has just been received.

Also a complete line of Spratt's Dog Remedies and Kennel sundries at Pearson & Potter Co., Ltd., Union & Hotel Sts.

Oceanic Steamship Company.

TIME TABLE

The fine Passengers Steamers of this line will arrive at and leave this port as hereunder:

FROM SAN FRANCISCO.		FOR SAN FRANCISCO.	
*ALAMEDA	DECEMBER 4	*ALAMEDA	DECEMBER 9
VENTURA	DECEMBER 16	SIERRA	DECEMBER 15
*ALAMEDA	DECEMBER 23	*ALAMEDA	DECEMBER 20
1904.			
SIERRA	JANUARY 6	SONOMA	JANUARY 5
*ALAMEDA	JANUARY 13	*ALAMEDA	JANUARY 20
SONOMA	JANUARY 27	VENTURA	JANUARY 26
*ALAMEDA	FEBRUARY 3	*ALAMEDA	FEBRUARY 10
VENTURA	FEBRUARY 17	SIERRA	FEBRUARY 16
*ALAMEDA	FEBRUARY 24	*ALAMEDA	FEBRUARY 21
SIERRA	MARCH 2	SONOMA	MARCH 2
*ALAMEDA	MARCH 9	*ALAMEDA	MARCH 23
SONOMA	MARCH 16	VENTURA	MARCH 23
ALAMEDA	APRIL 6	*ALAMEDA	APRIL 13
VENTURA	APRIL 13	SIERRA	APRIL 13
*ALAMEDA	APRIL 20	*ALAMEDA	APRIL 27
SIERRA	APRIL 27	SONOMA	MAY 4

* Local boat.

In connection with the sailing of the above steamers, the Agents are prepared to issue to intending passengers coupon through tickets by any railroad from San Francisco to all points in the United States, and from New York by steamship line to all European Ports. For further particulars apply to

W. G. Irwin & Co.

(LIMITED)

General Agents Oceanic S. S. Company.

Canadian-Australian Royal Mail STEAMSHIP COMPANY

Steamers of the above line, running in connection with the C. NADIAN-PACIFIC RAILWAY COMPANY between Vancouver, B. C., and Sydney, N. S. W., and calling at Victoria, B. C., Honolulu and Brisbane, Q.

See at Honolulu on or about the dates below stated, viz:

FOR AUSTRALIA.		FOR VANCOUVER.	
MOANA	DECEMBER 19	MIOWERA	DECEMBER 16
1904.			
MIOWERA	JANUARY 16	AORANGI	JANUARY 13
AORANGI	FEBRUARY 13	MOANA	FEBRUARY 10
MOANA	MARCH 12	MIOWERA	MARCH 9
MIOWERA	APRIL 9	AORANGI	APRIL 6
AORANGI	MAY 7	MOANA	MAY 4
MOANA	JUNE 4	MIOWERA	JUNE 1
MIOWERA	JULY 2	AORANGI	JUNE 29

Calling at Suva, Fiji, on Both Up and Down Voyages

THEO. H. DAVIES & CO., Ltd., Gen'l Agts.

Pacific Mail Steamship Co. Occidental & Oriental S. S. Co. and Toyo Kisen Kaisha.

Steamers of the above Companies will call at Honolulu and leave this port on or about the dates below mentioned:

FOR CHINA AND JAPAN.		FOR SAN FRANCISCO.	
KOREA	NOV. 25	CHINA	NOV. 27
GALIC	DEC. 2	DORIC	DEC. 5
HONGKONG MARU	DEC. 10	NIPPON MARU	DEC. 14
CHINA	DEC. 19	SIBERIA	DEC. 21
DORIC	DEC. 29	COPTIC	DEC. 29
1904.			
NIPPON MARU	JAN. 6	AMERICA MARU	JAN. 11
SIBERIA	JAN. 14	KOREA	JAN. 16
COPTIC	JAN. 22	GALIC	JAN. 23
AMERICA MARU	FEB. 1	HONGKONG MARU	JAN. 20
KOREA	FEB. 9	CHINA	FEB. 9
GALIC	FEB. 17	DORIC	FEB. 19
HONGKONG MARU	FEB. 24	NIPPON MARU	FEB. 27

For general information apply to

H. Hackfeld & Co.

AMERICAN HAWAIIAN STEAMSHIP COMPANY.

DIRECT MONTHLY SERVICE BETWEEN NEW YORK AND HONOLULU, VIA PACIFIC COAST.

FROM NEW YORK.

S. S. ALASKAN, to sail about January 1.
S. C. CALIFORNIAN, to sail about February 1.

Freight received at Company's wharf 41st Street, South Brooklyn, at all times.

FROM SAN FRANCISCO TO HONOLULU.

S. S. NEVADAN, to sail December 15, and each month thereafter.

Freight received at Company's wharf, Greenwich Street.

FROM HONOLULU TO SAN FRANCISCO, VIA KAHULUI.

S. S. NEVADAN, to sail December 2.

FROM SEATTLE AND TACOMA:

S. S. HAWAIIAN, to sail about December 25.

H. Hackfeld & Co.

C. P. MORSE, General Freight Agent. AGENTS.

SHIPPING INTELLIGENCE

(For additional and later shipping see pages 4, 5, or 8.)

TIDES, SUN AND MOON.

Full Moon December 4th, at 7:41 a. m.

Date	High Tide	Low Tide	High Tide	Low Tide	Sun Rises	Sun Sets	Moon Rises	Moon Sets
Nov. 30	6:59	1:4	12:50	6:22	7:27	6:21	5:17	2:29
Dec. 1	1:37	1:0	1:50	7:14	8:16	6:21	5:17	2:23
2	2:15	1:8	2:06	7:54	9:01	6:22	5:17	4:16
3	2:52	2:0	2:51	8:30	9:48	6:23	5:17	5:15
4	3:30	2:1	3:29	9:08	10:39	6:23	5:18	6:15
5	4:10	2:1	4:25	9:50	11:15	6:24	5:18	6:45

Times of the tide are taken from the U. S. Coast and Geodetic Survey tables. The tides at Lahulu, and Hilo occur about one hour earlier than at Honolulu. Hawaiian standard time is 10 hours 26 minutes slower than Greenwich time, being that of the meridian of 157 degrees 30 minutes. The time whistle blows at 1:30 p. m., which is the same as Greenwich, 3 hours, 0 minutes. The Sun and moon are for local time for the whole group.

ARRIVING. Saturday, December 5. Strm. Lehua, Napala, from Lanai, Maui and Molokai ports, at 7:30 a. m., with 50 pigs, 31 head cattle, 15 head calves, 6 pig. machinery, 14 sacks coconuts, 12 sacks coin, 6 bags taro, 50 pkgs. sundries. S. S. Doric, Smith, from the Orient, off port at 12:30 a. m. Strm. Kinu, Freeman, from Hilo and way ports, at noon. Strm. Lehua, Napala, from Lanai, Maui and Molokai ports, due.

DEPARTING. Saturday, December 5. Strm. Kaula, Bruhn, for Hanalei, Ahukini and Koloa, at 2 p. m. Strm. Ke Au Hou, Tullett, for Kaunapali, Maalea and Lahaina, at 2 p. m. S. S. Rosecrans, Johnson, for San Francisco via Hilo, at 5 p. m. Sunday, December 6. S. S. Doric, Smith, for San Francisco, at 8 a. m.

PASSENGERS. Arriving. Per strm. Lehua, December 5, from Molokai and Maui ports: Mrs. Kahon, Mr. De Cew, E. R. Adams, G. S. Wilder, W. Lanz, Edward Parish, E. Wodehouse, P. Lishman, Capt. Clark, J. Dowsett, Miss Dora McCorriston and 3 deck. Per S. S. Doric, December 5, from the Orient: For Honolulu: J. H. Fanton, J. D. Julien, For San Francisco: Mrs. J. T. Barraclough, Mrs. Jules Brett, Mrs. W. N. Brewster, Master Francis Brewster, Master Raymond Brewster, Miss E. K. Brewster, Miss Helen Christian, Miss J. Eddison, Mrs. L. Heathcote, Miss K. W. Howell, Miss James, C. R. King, F. C. Lockey, Miss M. V. C. Nicolaisen, Mrs. L. Ritchie, Miss Edith Simpson, Mrs. H. Smulders, S. Yennoto, Jules Bret, Rev. W. N. Brewster, Miss Mary Brewster, Master William P. Brewster, Master Edward Brewster, Miss J. Callender, R. Callender, R. Edwin Eddison, E. A. Elliott, Miss F. Howell, Thomas James and valet, William B. Jones, Albert Kopp, Mrs. J. P. Martin, K. Iwa, William G. Sewall, H. Smulders, George L. Thompson, H. Miyabe.

Departing. Per S. S. Doric, December 6, for San Francisco: T. W. Brewster, T. G. Nicklin, Rev. Lillington, E. T. E. Havergal.

SUNDAY BASEBALL. At Kapiolani Park tomorrow afternoon the Atlas play the Good Eyes at 12:30 o'clock; and the Kapiolani and Unions at 3:30 o'clock.

FOOTBALL. Today at 3:30 the Punahou football team will meet the soldiers on the new gridiron and a hard fought game will be the result. It is said that both teams are in the best possible shape and compare very evenly as to weight. The Punahou boys have had the advantage of experience. There will be much interest in this game to see what comparison can be drawn between Punahou and H. A. C. The standing of the score will be interesting. Benson, the coach of the soldiers, says that his team will play much better than they did in their first game.

The reduction of admission to 25 cents is meeting general approval and there should be a large crowd. The following is the line-up: Punahou. Center. Artillery. L. Robinson. Allen Right Guard. Fuller-Bush. Perry Left Guard. Hatch. Ludlam Right Tackle. Walker-Judd. Coulter Left Tackle. Waterhouse-Duisenberg. Woods Right nd. Damon-Akina. Clark Left End. Anderson-Robinson. Corel-Wing Quarter. Forbes-Campbell. Griffith Right Half. Macfarlane-Campbell. Smith Left Half. Johnson-Marcellino. Modlin Full Back. Alexander-Dixon. Merrow

POLO. There will be polo this afternoon. The game will be called at 3 o'clock and the usual arrangements are to be made to bring the public to the polo grounds. The teams will play as follows on Saturday: Kapiolani. Moanalua. Clarence Cooke. R. W. Atkinson No. 1. R. W. Shingle. S. E. Damon No. 2. Harold Castle. A. W. Carter No. 3. George Donnison. A. F. Judd No. 4. Dillingham and Giffard will substitute for the Kapiolani and Ballou for the Moanalua.

BASKET BALL. There will be two games of basket ball this afternoon on the Kamehameha

field. The first will be Punahou vs. High School, and the second Y. W. C. A. vs. Priory.

INDOOR BASEBALL. The Punahou will play the Diamond Heads at indoor baseball this evening at 8 o'clock at the Y. M. C. A. gymnasium.

BAND CONCERT. The Territorial Band under the direction of Captain Berger will play at Makena Island, Kapiolani Park tomorrow afternoon at 3 o'clock. The following is the program: PART I. "Old Hundred." Overture—"Peter Schmolli." Weber. Ruled—"The Last Watch." Piusotti. Selection—"La Traviata." Verdi. Vocal—Four Hawaiian Songs. PART II. Suite—"Scenes Pittoresques." Massenet. Two Ballads—(a) "Darlings Dream." (b) "Songs Without Words." Orléan. Gavotte—"Snowflakes." Haase. Overture—"In the Dawning." Munkelt. "Star Spangled Banner."

To Prevent Croup, begin in time. The first symptoms is hoarseness; this is soon followed by a peculiar rough cough, which is easily recognized and will never be forgotten by one who has heard it. The time to act is when the child first becomes hoarse. If Chamberlain's Cough Remedy is freely given, all tendency to croup will soon disappear. Even after the croupy cough has developed, it will prevent the attack. There is no danger in giving this remedy as it contains nothing injurious. It always cures and cures quickly. Sold by all dealers. Benson, Smith & Co., general agents.

Christmas Curios. Tapes and Lauhala Photo Cases all sizes. 50 Doz. Tasmania Shell Lais. Inexpensive Christmas Curios.

WOMAN'S EXCHANGE Hotel Street near Port

A COUGH CONUNDRUM WHEN IS A COUGH MORE THAN A COUGH? When it's a settled cold. When it hangs on in spite of all you can do. Cough mixtures won't cure it, because they are merely for a cough, and this is something.

DAVIS' EMULSION COD LIVER OIL Cures the cough because it cures the something more. It heals and repairs the inflamed tissues where the cold has taken root and prevents its coming back.

Sold by CHAMBERS DRUG CO., LTD Corner Fort and King Streets.

The Best Is None too good for the working man and his family, and when the best is no higher priced than the ordinary, it is within the reach of everyone—this is true of

Rainier BEER It is the working man's and the rich man's drink.

RAINIER BOTTLING WORKS, AGENTS FOR HAWAII. PHONE WHITE 1331 P. O. BOX 517.

Chicago in Less Than 3 Days From San Francisco at 10 a. m.

CHICAGO, UNION PACIFIC & NORTHWESTERN LINE Pullman fourteen-section Drawing-Room and Private Compartment Observation Sleeping Cars with Telephone. Electric-reading Lamps in every Berth, Compartment and Drawing-Room. Buffet, Smoking and Library Cars with Barber and Bath, Dining Cars—meals a la carte. Electric-lighted throughout.

Daily Tourist Car Service at 6 p. m. and Personally Conducted Excursions every Wednesday and Friday at 8 a. m. from San Francisco. The best of everything.

P. P. Ritchie Gen. Agent Pacific Coast. 617 Market St. San Francisco. (Palace Hotel.)

Trunks Valises and Dress Suit Cases

WE HAVE JUST OPENED UP A NEW SHIPMENT OF STEAMER TRUNKS, PACKING TRUNKS, VALISES AND DRESS SUIT CASES. OUR LINE OF THE ABOVE WILL BE FOUND THE LARGEST AND MOST PRACTICAL ON THE MARKET. EMBRACING EVERYTHING MADE, MANY OF THE STYLES BEING OUR EXCLUSIVE DESIGNS AND PATTERNS. SUITABLE CHRISTMAS PRESENTS IN THE SHAPE OF NEATLY FINISHED DRESS SUIT CASES AND VALISES.

Theo. H. Davies & Co., LIMITED Hardware Department

Fresh California Crabs

Fine assortment on hand today. Also extra choice Mallard, Teal, Sprig, Canvas-back and Widgeon ducks. These are rare good delicacies.

Metropolitan Meat Co., Ltd., Telephone Main 45

BEAVER LUNCH ROOM, Fort Street. Opposite Wilder & Co. H. J. NOLTE, Prop'r. First-Class Lunches served with tea, coffee, soda water, ginger ale or milk. Smokers Requestes a Specialty.

M. OHTA, Contractor and Builder House Painter Kewalo, Sheridan Street, near King. Honolulu H. I.

S. Kojima. IMPORTER AND DEALER IN LIQUORS, Japanese Provisions, General Merchandise, AND PLANTATION SUPPLIES. 24 & 46 HOTEL STREET, HONOLULU. Telephone White 2411. P. O. Box 204.

Headquarters For FURNITURE, RUGS, LINOLEUM AND WINDOW SHADES Also Furniture made to order, UP-HOLSTERING; REPAIRING and FRENCH POLISHING done by first class workmen.

Hopp & Co., King and Bethel Streets. Phone Main 111.

Twenty-five cents pays for a Want ad in the Star. A bargain.

Prepare for Winter!

If other paints don't stop the leak, ours will. The Peerless Preserving Paint is guaranteed to do the work and to give absolute satisfaction.

Proofs of which are found at the following buildings: Alexander Young Building, Colusa Building, Honolulu Brewing Building, C. Brewer & Co.'s Building, Stangenwald Building, New Morgue Building And Many Others

We Handle Felt, Pitch and Gravel Roofs

For Further Particulars Apply to Peerless Preserving Paint Co. No. 30 Queen Street

Sacrifice Sale

Our Entire Stock, Consisting of Men's Clothing, Hats, Boots and Shoes, Men's Furnishing Goods, Dry Goods, Etc., Etc. Will be sold out at Reduced Prices as follows: Heavy Brown Cotton, 1 yard wide.....15 yards \$1.00 Heavy White Cotton, 1 yard wide..... 12 yards \$1.00 10-4 White and Gray Cotton Blankets..... per pair .70 Large Size White Bed Spreads..... apiece .70 Men's Fine Balbriggan Undershirts.....15 cents, 2 for .25 Men's Fine Heavy Balbriggan Undershirts..... each .20 Men's Fine Heavy Colored Undershirts..... each .20 Men's Fancy Socks.....10 cents per pair, 3 pairs for .25 Men's Golf Shirts—all will be sold at half of actual cost. Men's Bal Shoes.....was \$1.50, now \$1.00 pair Men's Blue Denim Pants.....was .75, now .50 " Men's Woolen Pants.....was 5.00, now 2.50 " Men's Woolen Coats.....was 4.00, now 2.00 " Men's Woolen Coats.....was 3.00, now 1.50 each Men's Woolen Coats.....was 4.00, now 2.00 " Men's Woolen Coats.....was 5.00, now 2.50 " Men's Blue Serge Suits.....was 13.00, now 6.50 "

One lot of MEN'S SOCKS bought from Manufacturer slightly damaged; these goods when in good condition sell at 50c. to 75c. per pair. Sold now at 15 cents per pair. Sale Begins Saturday, November 28 for Two Weeks Only

YEE CHAN NOS. 1005, 1009, 1013 NUUANU STREET.

A.B.C. BOHEMIAN "King of all Bottled Beers." Brewed from Bohemian Hops. SOLD EVERYWHERE.

THE YOKOHAMA SPECIE BANK,
Limited.
ESTABLISHED 1880.

Capital Subscribed.....Yen 24,000,000
Capital Paid up..... 18,000,000
Reserve Fund..... 9,210,000

HEAD OFFICE, YOKOHAMA.

Branches:

Honolulu, New York, San Francisco,
London, Lyons, Bombay, Hongkong,
Newchwang, Peking, Shanghai, Tientsin,
Kobe, Nagasaki, Tokio.

The Bank buys and receives for collection Bills of Exchange, Issues Drafts and Letters of Credit, and transacts a general banking business.

Honolulu Branch 67 King Street

BRILLIANT SUCCESS
OF THE

Walter Sanford Co.
AT
The Orpheum

SATURDAY-NIGHT
LAST OF

The Pace That Kills

GRAND FAREWELL PERFORMANCES
MONDAY AND TUESDAY,
NORTHERN LIGHTS

BY AUTHORITY

Sealed Tenders will be received by the Superintendent of Public Works until 12 M. of Wednesday, December 23rd, 1903, for constructing a cottage and school buildings at the Waialeale Industrial School, Kahuku.

Plans and specifications on file in the office of the Engineer of the Department of Public Works.

The Superintendent reserves the right to reject any and all bids.

Tenders to be in separate envelopes and endorsed "Proposal for Cottage at Waialeale;" "Proposal for School-houses at Waialeale."

C. S. HOLLOWAY,
Superintendent of Public Works,
December 1st, 1903.

CHARITY DANCE

FOR THE
BENEFIT
OF THE
Catholic, Benevolent, Union
PROGRESS HALL
Saturday, Dec. 5,
AT 8 P. M.
ADMISSION.....FIFTY CENTS

TO RENT.

Residence of F. B. McStocker, on Lunailo Street, to rent to a responsible party, possession given at once. Rent reasonable. Apply to

W. H. HOOGS.

NOTICE.

I hereby notify all persons that I will not be responsible for any debt contracted in my name by any person without my written authority therefor.

J. T. DE BOLT.

HAWAIIAN OPERA HOUSE.

Mr. James Neill

FOR A LIMITED
ENGAGEMENT,
OPENING

Saturday, December 5

WITH

A GENTLEMAN OF FRANCE

Seats now on sale at WALL, NICHOLS CO.

Complete Repertoire will be announced tomorrow.

HART & CO., LTD

THE ELITE ICE
CREAM PARLORS

Chocolates and Confections
Ice Cream and Water Ices
Bakery Lunch.

THE FINEST RESORT IN THE CITY

Twenty-five cents pays for a Wad in the Star. A bargain.

**Jesse Moore
A. A. Whiskey**

BEST ON EARTH



Maldonado & Co.
(INC.)

Spreckels Building,
Honolulu H. T.
General Export Agents For
JESSE MOORE-HUNT CO
San Francisco Cal., and Louisville Ky.



THE PACIFIC SURETY CO.
OF CALIFORNIA

This Company has been chartered under the laws of the State of California which provide that each stockholder shall be personally liable for all its debts and liabilities.

Board of Directors:

Geo. C. Perkins, United States Senator and of Goodall, Perkins & Co.
H. S. Crocker, of H. S. Crocker Company.
John Birmingham, President California Powder Works and Hercules Powder Works.
Wm. H. Crocker, President Crocker-Woolworth National Bank.
V. J. A. Rey, of Britton & Rey.
Jas. Moffitt, President Blake, Moffitt & Towne and Vice-President First National Bank.
H. L. Davis, President California Title Insurance and Trust Co.
John W. Phillips, Capitalist.
F. P. Deering, Attorney at Law.
WALLACE EVERSON, President
A. P. REDDING, Secretary.

The Directors of this Company are worth

Many Millions of Dollars and with the combined wealth of the many stockholders and its cash assets of nearly \$400,000.00, the PACIFIC SURETY is recognized as one of the leading surety companies of the world.

HAWAIIAN TRUST COMPANY, LTD

General Agents.
223 Fort St. Tel. Main 184.

Byron Hot Springs

Only 68 Miles From San Francisco on Main Line Southern Pacific Co.

Most Wonderful Springs In America

HOT SALT, HOT, MUD AND SULPHUR BATHS.

Fine warm swimming tanks. Drinking waters of wonderful curative qualities. Pronounced the best in America for Rheumatism, Gout, Sciatica and Malaria.

Thoroughly modern steam heated hotel as comfortable in Winter as Summer.

Call at Star Office for booklets, or on Mr. J. K. Burnett, who kindly allows the use of his name.

Address, H. R. WARNER, Manager, Byron Hot Springs, Contra Costa County, Cal.

TO COLLECT BILLS.

A Chicago undertaker proposes to would be called blackmail.

Star Want ads pay at once.

**PROCEEDINGS
IN THE COURTS**

NUMEROUS SUPREME COURT APPEALS POSTPONED TO THE NEXT TERM.

Castle & Withington have filed a demurrer to the complaint of Excelsior Lodge, I. O. O. F., against Honolulu Rapid Transit & Land Co. It contains fifteen grounds of demurrer, all of a technical nature. The last one is "It does not appear how the complaint is remedied according to the strict rules of the common law or why it should have relief in a court of equity." The suit is for an injunction against a switch in the Rapid Transit Co's track opposite the complainant's property in Fort, near Beretania street.

Henry E. Highton for complainants has given notice that he will move on Monday to set for trial on a day certain the suit of V. O. Teisenz et al., against the American Dry Goods Association, et al. This is the case of alleged conspiracy to wreck the defendant Association.

Simao Souza Cambra has filed a bond in \$2,000, with E. S. Cunha as surety, on his appeal to the Supreme Court from conviction and sentence for seduction.

The following Supreme Court cases have been continued till next session: Henry J. Lyman et al vs. F. L. Winter, Territory vs. Wong Tim, Kapiolani Estate vs. Cooper, Magoon vs. Fitch, Kemilla Holt vs. Kaula, Lalaka, vs. Hilo Sugar Co., Jan Ban vs. Tsen Yim et al., Estate of J. F. O. Banning, trusteeship question, Tax Collector Keola vs. Solomon Hale, Achi vs. Henrique, Maria Correia vs. Sheriff Baldwin, Administrator Thomas E. Cook vs. Tsuchi Kaula, Territory vs. B. H. Wright, E. O. Hall & Son, Ltd., vs. L. A. Dickey, Tong sai vs. Territory, Paakiki et al. vs. Honokaa Sugar Co., H. Hackfeld & Co. vs. C. Akul, Hawaiian Sugar Co., vs. Kaula Tax Assessor, Kona-Kau Telegraph Co. vs. H. T. Mills, W. W. Bierce vs. R. W. McChesney et al., and F. L. Miner et al. vs. Hilo Sugar Co.

The case of C. M. Cooke, Ltd., vs. Treasurer of the Territory, construction of stamp act, is to be submitted on briefs, also Bruce Cartwright's suit for a writ of prohibition against Judge Gear.

Yesterday afternoon the case of W. Lono Austin vs. John D. Holt Jr., and William R. Holt was argued and submitted. C. F. Peterson and T. McCants Stewart appeared for the plaintiff, H. E. Cooper appeared for John D. Holt, Jr., upon a writ of error, and Arthur A. Wilder for William R. Holt on appeal from Judge Robinson. The plaintiff claimed that in his minority he had been deprived of certain property inherited from his mother, through a sale by the first-named defendant to the second named. Judge Robinson gave him judgment for about \$5,000 including interest, defendant John D. Holt, Jr., being found in default. The defendants went to the appellate court under different pleadings, but both cases were heard as one.

Judge De Bolt granted a divorce to Kate Hottendorf against Henry Hottendorf on the ground of non-support.

MARRIED.

SCHIMMERHORN-LAWLOR—In San Francisco, California, November 25, 1902, Miss Marie Christine Lawlor to Charles Fort Schimmerhorn of Honolulu. Mr. and Mrs. Schimmerhorn arrived in Honolulu by the Alameda yesterday and will make their home here.

LESLIE-SHAW—At the Kamehameha Girls' School, at 10:30 o'clock a. m., December 4, Rev. Hopwood, chaplain of the school officiating, Miss Rosina Holokahiki Shaw to Lieutenant Samuel Leslie of the mounted police. The bride is a graduate of the Girls' School, and since her graduation has been a teacher in the preparatory department. She is a singer of ability, and a member of the Hawaiian Woman's Society. The groom is a graduate of the Kamehameha Boys' School. Mr. and Mrs. Leslie sailed by the Mauna Loa yesterday at noon, to spend the first weeks of their married life at the residence of the father of the groom, Napoopoo, Kona, Hawaii.

DIED.

KA-NE—At his residence School street, Honolulu, Hawaii, December 5, 1903, Samuel K. Ka-ne, a member of the Council of State under the Republic of Hawaii, a member of the Tax Appeal Court, of the Board of Health, the Bar Association, and other public bodies. He had been ill for about three months. He was born at Waimanalo, July 31, 1858. He leaves a widow, two brothers and a sister. The funeral will be held from the residence tomorrow wafternoon, December 6, at 3 o'clock. The interment will be in Nuuanu cemetery. The services will be conducted by the Rev. Lono, pastor of Kaunakapili church, of which the deceased was a member.

A piece of flannel dampened with Chamberlain's Pain Balm and bound to the affected parts, is better than any plaster for lame back or pains in the side or chest. Chamberlain's Pain Balm is a liniment that has no superior. One application gives relief. For sale by all dealers. Benson, Smith & Co., general agents.

HUSTAGE-PECK CO., LTD
QUEEN STREET

DEALERS IN
**Firewood, Stove,
Steam and Blacksmith
Coal**

WHOLESALE AND RETAIL.

Special attention given to
DREYING
ALSO, WHITE AND BLACK SAND

Twenty-five cents pays for a Want ad in the Star. A bargain.

THE
BANK OF HAWAII
LIMITED.

Incorporated Under the Laws of the Territory of Hawaii.

PAID-UP CAPITAL - \$600,000.00
SURPLUS - 200,000.00
UNDIVIDED PROFITS - 70,283.95

OFFICERS AND DIRECTORS.
Charles M. Cooke.....President
P. C. Jones.....Vice-President
F. W. Macfarlane.....2nd Vice-President
C. H. Cooke.....Cashier
F. C. Atherton.....Assistant Cashier

H. Waterhouse, E. F. Bishop, E. D. Tenney, J. A. McCandless and C. H. Atherton.

COMMERCIAL AND SAVINGS DEPARTMENTS

Strict attention given to all branches of Banking.

JUDD BUILDING, FORT STREET

Claus Spreckels, Wm. G. Irwin.

Claus Spreckels & Co.
BANKERS.

HONOLULU, - - - H. I.

San Francisco Agents—The Nevada National Bank of San Francisco

DRAW EXCHANGE ON

SAN FRANCISCO—The Nevada National Bank of San Francisco.

LONDON—Union of London & Smith's Bank, Ltd.

NEW YORK—America Exchange National Bank.

CHICAGO—Corn Exchange National Bank.

PARIS—Credit Lyonnais.

BERLIN—Dresdner Bank.

HONGKONG AND YOKOHAMA—The Hongkong and Shanghai Banking Corporation.

NEW ZEALAND AND AUSTRALIA—Bank of New Zealand, and Bank of Australasia.

VICTORIA AND VANCOUVER—Bank of British North America.

TRANSACTION A GENERAL BANKING AND EXCHANGE BUSINESS.

Deposits Received. Loans Made on Approved Security. Commercial and Travellers' Credits Issued. Bills of Exchange Bought and Sold.

COLLECTIONS PROMPTLY ACCOUNTED FOR.

ESTABLISHED IN 1858.

BISHOP & CO.
BANKERS

BANKING DEPARTMENT.

Transact business in all departments of Banking.

Collections carefully attended to. Exchange bought and sold.

Commercial and Travelers' Letters of Credit issued on The Bank of California and N. M. Rothschild & Sons, London.

Correspondents: The Bank of California, Commercial Banking Co. of Sydney, Ltd., London.

Drafts and cable transfers on China and Japan through the Hongkong & Shanghai Banking Corporation and Chartered Bank of India, Australia and China.

Interest allowed on term deposits at the following rates per annum, viz.:
Seven days' notice, at 2 per cent.
Three months, at 3 per cent.
Six months at 3 1/2 per cent.
Twelve months, at 4 per cent.

TRUST DEPARTMENT.

Act as Trustees under mortgages. Manage estates (real and personal). Collect rents and dividends. Valuable Papers, Wills, Bonds, Etc., received for safe-keeping.

ACCOUNTANT DEPARTMENT.

Auditors for Corporations and Private Firms. Books examined and reported on. Statements of Affairs prepared. Trustees on Bankrupt or Insolvent Estates.

Office, 224 Bethel Street.

SAVINGS DEPARTMENT.

Deposits received and interest allowed at 4 1/2 per cent per annum, in accordance with Rules and Regulations, copies of which may be obtained on application.

INSURANCE DEPARTMENT.

Agents for FIRE, MARINE, LIFE, ACCIDENT AND EMPLOYERS' LIABILITY INSURANCE COMPANIES.

Insurance Office, 224 Bethel Street.

THE FIRST
AMERICAN SAVINGS & TRUST
CO. OF HAWAII, LTD.

Capital, \$250,000.00.

President..... Cecil Brown
Vice-President.....M. P. Robinson
Cashier.....W. G. Cooper

Principal Office: Corner Fort and King streets.

SAVINGS DEPOSITS received and interest allowed for yearly deposits at the rate of 4 1/2 per cent per annum. Rules and regulations furnished upon application.

PURE WHOLESOME BREAD

By a First-Class Baker of Twelve Years Experience in Honolulu. 7 LOAVES FOR 25 CENTS. All kinds of Cakes, Pies, Ice Cream, Etc., made to order at very short notice.

SUNRISE BAKERY
Nuuanu Street near Beretania.

Moet & Chandon's
"White Seal"
Champagne

IS USED AT PROMINENT SOCIETY

FUNCTIONS ALMOST EXCLUSIVE-
LY.

THE NEW VINTAGE OF "WHITE

SEAL" IS PERFECTION IN CHAM-

PAGNE.

H. Hackfeld & Co., Ltd
Agents

Electric Power
Reduced in
Price

The Hawaiian Electric Company announces a reduction in the rate for electric current supplied for power. On and after December 1st, 1903, the rate for power will be 36 cents per kilowatt hour for all power up to 100 kilowatt hours per month; thence on a sliding scale to 20 cents per kilowatt hour for 1000 kilowatt hours per month; thence on a proportionate scale to 6 cents per kilowatt hour for 2700 kilowatt hours per month. All current above 2700 kilowatt hours per month will be 6 cents per kilowatt hour. The usual 5 per cent discount will be allowed on all bills paid on or before the 10th of the succeeding month.

A minimum charge of \$1.00 per horsepower per month will be made.

Hawaiian Electric Co., Ltd

Office King Street, Telephone Main 390

Why can we do better than Others?

We import all kinds of building materials direct from the factory. We manufacture all kinds of mill work. We keep a regular gang of carpenters and painters. We are in a position to take contracts on building, reasonably. We are glad to see our friends.

Oahu Lumber & Building Co., Ltd.

P. O. Box, 367. Office and yard, King St., opp. Aala Park. Phone White 361.

JUST OPENED

Lacquer Ware, Tea Trays and
Cabinets and Japanese Embroid-
ered Ladies' Purses

K. ISOSHIMA,

NO. 30, S. KING STREET

NEAR BETHEL

**Leather Goods For
Holiday Presents**

An appreciated gift will be any article from our beautiful line of Mexican Carved Leather, Alligator and Seal Leather Goods. The line includes

PURSES FOR LADIES AND GENTLEMEN,
CIGAR AND CIGARETTE CASES,
CHATELAINES, WRITING PADS, ETC.

Hawaiian News Co., Ltd
YOUNG BUILDING STORE.

Special Sale for the Holidays

Commencing Tuesday, December 1st the well known firm of WING WO CHAN, Nuuanu, just below King Street, will offer a large variety of ORIENTAL ART GOODS AND NOVELTIES including Chinese Silks, Grass Cloth, Silk and Linen Handkerchiefs, Pongee Pajamas and Shirts, Bamboo and Silk Screens, Sandal Wood and Ivory Fans, Boxes, etc., Silverware, Chinaware, Ornaments, Ebony and Rattan Furniture, all kinds of Cloth Baskets, Etc. Also many novelties new to Honolulu.

Call and inspect these new goods; you will not be disappointed. The prices are right for the times.

WING WO CHAN & CO.,

91-925 Nuuanu, Three Doors Below King Street.

The Hawaiian Star,
DAILY AND SEMI-WEEKLY.

Published every afternoon (except Sunday) by the Hawaiian Star Newspaper Association, Limited.

SUBSCRIPTION RATES.
Local, per annum.....\$5.00
Foreign, ".....12.00
Payable in Advance.

Frank L. Hoogs, - - - - - Manager

SATURDAY.....DECEMBER 5, 1903.

THE COTTON CRISIS.

The shortage in the United States cotton crop will be felt very severely in all cotton-consuming countries and especially in England. Throughout the year there has been disorganization in the cotton trade, and thousands of operators have had to work short time. Some mills indeed have had to shut down altogether. In consequence there has been considerable suffering, chiefly in Lancashire. But the depression already felt will be as nothing to what must come on now. The conditions promise almost a return to that never forgotten famine time during the civil war. This condition is brought about by the consumption overtaking the supply consequent upon partial failure of the crop for two seasons now.

How dependent the world is for its cotton upon the United States is shown by the fact that 80 per cent of the whole supply comes from our plantations. A shortage in our crop becomes, thus, an international calamity, but falls heavier upon the United Kingdom, seeing that of all her manufactured exports cotton goods take the lead.

How great is the dependence of England upon the United States for the supply of raw cotton can be gathered from the following figures. In the year 1902, the total importations of raw cotton into the United Kingdom were 1,816,000,000 pounds. Of this amount, 1,363,000,000 pounds came from the United States, leaving only a little over 400,000,000 pounds to come from all other countries. Of this balance Egypt sent the lion's share, more than half, and the rest came chiefly from Madras, British India.

It thus becomes quite plain that any shortage in our cotton crop must have a very serious effect upon the manufacturing population of Great Britain, which is absolutely dependent upon our cotton fields. Fortunes may be being made by the manipulators of cotton stocks, but the people are going and indeed are already suffering. The cotton spinners of Lancashire are going to spend a very dismal and black winter. Of course this will also affect the trade of the world, and the prices of cotton cloth and allied fabrics will rise, to the disadvantage of the poorer classes. The present cotton crisis is far more important than we, living here, have any idea of.

There is a strong conviction among those who have given study to the subject, that the United States will, in a comparatively short time consume most of the cotton she now produces. That even with a considerably increased acreage the population of the United States and the ever-growing foreign trade of the country will within a measurable period catch up with the extra production, and that if there should be an American surplus it will soon cease to be sufficient to supply the foreign demand. At any rate, it is insisted that the world's supply of cotton is not sufficient for the demand. If this is the case the condition of the Lancashire operatives will become chronic unless some other part of the world takes up the cultivation of cotton upon a similar scale to that of the United States.

Such efforts are being made in British colonies and dependencies. Experiments in cotton growing are also being carried on in the German, French, Portuguese and Italian colonies. Russia is putting forth energetic efforts to increase cotton production in her Central Asiatic possessions, and Cuba is spoken of as a likely cotton growing country.

The significant growth of the new "imperial sentiment" among the British people has led to the desire to produce within the Empire, as much as possible, the things the Empire consumes. There is now a widespread and profound belief among the cotton spinners of the country that the only salvation of their trade is British-grown cotton. By this it is not meant that British-grown cotton will, at least within anything like the near future, altogether take the place of American-grown cotton. The hope and expectation is that the British product will be supplemental to the supply drawn from the United States. It is argued that this supplemental British supply will not only meet the expected shortage in American cotton, but will prevent the cornering and manipulation of American cotton. It is claimed that this cornering and manipulation is possible largely because of the fact that the supply of staple cotton almost exclusively from one country, but that it would be impossible for these operations to go on to any great extent if other supplies in fairly considerable quantities came from many different parts of the world.

But the establishment of new agricultural industries is a slow process. There is so much to be learned, so many experiments to be made and so many failures to be encountered. Should much that is said of the American cotton market prove to be true, there is assuredly going to be almost a revolution in the industry, before supplies can be obtained from new markets. Mr. Chamberlain among his many schemes has established the British Cotton Growing Association, and has a fund of \$250,000 for the purpose of purchasing seed, hiring experts and conducting experiments. Most of the seed purchased and the experts employed come from the United States. Of course this is in line with his protective and imperial policy. It will, however, take a long time to work out, and meanwhile the Lancashire operatives will starve.

RECOVERING.

During the year ended June 30, 1903, German industries and commerce have continued to recover slowly but normally and surely from the collapse and depression which overtook them during the summer of 1900. In nearly every branch of production dividends, although in many cases derived more or less from artificially stimulated exports, have continued to improve, and the panicky apprehensions of two years ago have been replaced by a secure confidence that the worst is over and that the conclusion of the new commercial treaties is alone requisite to restore Germany to a secure and lasting period of prosperity.

If this expectation is clouded by any really ominous symptoms, it is the persistence with which certain leading industries continue to go on increasing their productive capacity, regardless of the fact that the limit of domestic absorption has long been passed, and any augmented output of most manufactured or partly manufactured products can only be disposed of by increased exports, which are now pushed, as many economists think, to the extreme verge of safety. In the Ruhr district alone 34 new coal-mine shafts were begun in 1902, a number of large iron and steel works were completed in the Lorraine-Luxembourg quarter, and throughout the Empire building operations—more or less in excess of the actual demand—have continued to absorb vast amounts of capital which could not be otherwise profitably employed.

The total foreign commerce of Germany, during the six years 1897-1902, was as follows:

Year.	Imports.	Exports.	Total Trade.
1897.....	\$1,150,228,058	\$ 906,335,178	\$2,056,563,236
1898.....	1,303,680,224	952,415,548	2,256,095,772
1899.....	1,376,503,461	1,039,681,342	2,416,184,806
1900.....	1,438,234,000	1,131,214,000	2,569,448,000
1901.....	1,420,150,046	1,132,738,866	2,552,888,912
1902.....	1,381,780,400	1,145,446,400	2,527,226,800

There was, therefore, in 1902 a decline of \$38,369,646 in imports and an increase of \$21,707,534 in exports, leaving a net decrease of \$25,662,112 in the foreign commerce of this country, as compared with 1901. In respect to quantity, the imports of 1902 were 1,255,900 tons less and the exports 2,718,000 tons more than those of 1901.

Everything

IN THE LINE OF

Bath Room

Accessories, Necessities and Luxuries

SUCH AS

Turkish Bath Mats, Bath Gloves, Brushes and Stropps OF EVERY DESCRIPTION

Natural and Rubber Sponges AT MODERATE PRICES

SPONGE BASKET AND BAGS

See Our Window Display

Call and see our Stock if in need of anything in this line.

HOLLISTER DRUG CO. FORT STREET

Speaker Cannon is a determined man, and will tolerate no impertinence from any man. Schulteis, the labor leader, came up against the wrong man when he undertook to insult Cannon.

The Supreme Court of Minnesota has probably put an end to the beet industry in that state by knocking out the bounty law. The less beet sugar is raised the better for the cane planter.

If the Organic Act gets all the amendments proposed, it will read almost entirely as a new act. It seems almost impossible to draw up a perfect law. Even the best legal minds are apt to err. No wonder our County Act, which is very voluminous, may prove to have so many flaws. One is almost tempted to think that lawyers make laws in order to attack them in some vulnerable point.

Dr. S. E. Bishop, our veteran scientist, thinks there has been a volcanic eruption in the Aleutian Islands, and gives very clear reasons for his belief. Dr. Bishop is a very careful observer of all natural phenomena, and it is highly probable that his surmise is correct.

Land Commissioner Pratt is opposed to making any extensive land exchanges. He is anxious to attract small farmers to the Territory and considers that what land the government now holds, should as much as possible be reserved for that purpose.

Mitchell does not seem to make much headway with the Colorado miners. The mining district of that state is practically in a condition of civil war.

Great Britain has settled the buying of the Chilean battle ships, out of hand. When wars are threatening in various parts of the world, battleships are sought for. On the eve of the war with Spain, the United States picked up a ship or two. On the eve of war with China, Japan bought a fine vessel from Chile. In fact it seems to be a profitable investment for a small power to have a man of war or two in course of construction. When ever a war scare comes on, there will always be an offer from the large powers Chile has done quite a little business in this line.

Clerk Meheula seems to be in a peck of trouble. He will begin to say that all is not gold that glitters.

There has been no delay in signing the Panama treaty. It means not only independence to Panama but it means a stream of wealth which will pour into the treasury of the new Republic. Now

Classified Ads in Star.

Ads under "Situations Wanted," inserted free until further notice.

For Sale

For sale cheap, two fine lots in Kaimuki Charles L. Rhodes, Star Office.

A magnificent building site on the Punchbowl slope near Thurston avenue. Particulars at Star office.

Building lot corner King and Kamehameha road. Palama terminus of Rapid Transit road. Apply at Star office.

To Rent

Desirable unfurnished rooms for rent, reasonable, en suite or single. Best location in town. 1189 Alakea, corner of Beretania

Furnished Rooms To Let

A nicely furnished front room. Mosquito proof and electric light. 494 Beretania near Punchbowl.

Found

A package. Apply to E. Klemme, 1108 Alapai street.

Cleaning and Dyeing

T. Masuda, Cleaning, Dyeing and Repairing all kinds of clothes, including Silk goods. Hats cleaned and repaired. Employment office, 1416-1420 Fort street, near Vineyard.

Situations Wanted

Competent stenographer and typewriter desires permanent or temporary employment. Address J. A. C., Star office.

How's This

\$7.00

DEPOSITED MONTHLY ESTIMATED VALUE.

Cash, end 8 years.....\$1000.00
Cash, end 10 years..... 1263.10
Cash, 5 years after maturity..... 1964.96
Cash, 10 years after maturity..... 2771.79

ANNUAL ANNUITIES.

5 years after maturity.....\$312.19
10 years after maturity..... 171.33

Phoenix Savings, Building And Loan Association
Judd Building, Fort St. Entrance.

Guaranteed Capital - - - \$200,000.00
Subscribed Capital - - - \$5,000,000.00
Paid-Up Capital - - - \$900,000.00

Wisdom In Glasses

Why select glasses in the old way, when by our new method you are able to obtain just the right thing without a question of doubt. It doesn't pay to take chances in this one very important step. It may mean the difference between eye aid, and eye injury. If in doubt, let us show the superiority of our new methods. We are giving comfort to others, and can do the same for you.

H. F. Wichman & Co., Ltd
1048 FORT STREET.

Optical Department "Exclusively Optics"

arises the question of ratification in our own senate, but this may be regarded as fairly safe, though there are certain great commercial interests which are arrayed against it.

It is presumable that our own hoodling Home Rulers will be delighted to find that there are others, in San Francisco, who can equal, if not exceed them. But two wrongs do not make a right. Further, for the comfort of our own hoodlers, it may be noted that on the mainland a course of successful hoodling always ends in the state's prison. The prison jaws are yawning for some of our light fingered, and easy conscience gentlemen.

There are many explanations which Representative Kumalae might be asked to make. As to the value of his answers, that would be problematical. If the Grand Jury really means business Representative Kumalae is going to have rather an unpleasant time of it. The Territory was fortunate when it did not have this scion of the Royal School as Speaker of the House.

The Boers themselves have probably ample work to keep them employed. The lawless class which has started in looting banks, and indulging in hold ups, is no doubt, formed of the dregs from both armies. They are the leavings and off scourings of regiments of irregular troops. Of these there are some on both sides, and it is these elements which have coalesced.

ENTRANCES ON MERCHANT STREET

The Pacific Hardware Comp'ny, Ltd

HAS ARRANGED for the removal of the HACK STAND from the Merchant Street side of its building and customers can avoid the Electric Cars by availing themselves of the TWO entrances on that street.

Now Opening

New lines of HOLIDAY GOODS, comprising selections of

Fine Cut Glass, Haviland and English China, Mettlach Beer Stejns, Chafing Dishes and Plated Ware Sporting Goods, Art Goods and Artists' Materials, Artistic Picture Framing a Specialty

Pacific Hardware Company, Ltd Merchant Street

M. S. GRINBAUM & CO., LTD., LIMITED CASTLE & COOKE, LTD.

Importers and Commission Merchants

Commission Merchants, Sugar Factors....

AGENTS FOR

The Ewa Plantation Company, The Waiakua Agricultural Co., Ltd The Kohala Sugar Company, The Waimea Sugar Mill Company, The Fulton Iron Works, St. Louis, Mo. The Standard Oil Company, The George F. Blake Steam Pumps, Weston's Centrifugals, The New England Mutual Life Insurance Company of Boston, The Aetna Fire Insurance Company of Hartford, Conn. The Alliance Assurance Company of London.

SOLE AGENTS FOR

Little Jack Smoking Tobacco

5c. and 10c. packages.

Agents for

BRITISH AMERICAN ASSURANCE COMPANY, of Toronto, Ontario.

DELAWARE INSURANCE CO. of Philadelphia.

TRUNKS!

Ridiculously Low Prices

THE VON HAMM-YOUNG CO., LIMITED

Tel. Main 198 P. O. Box 192

LORD & BELSER, GENERAL CONTRACTORS FOR CONSTRUCTION WORK, ETC., ETC.

No. 1 Rock from \$1.25 per yard up.
No. 2 Rock from \$1.35 per yard up.
No. 3 Rock from \$1.50 per yard up.
No. 4 Rock from \$1.70 per yard up.
Black sand from \$1.00 per yard up.

Office and Yards, Beach Street, Kewalo

M. PHILLIPS & CO., Wholesale Importers And Jobbers of

AMERICAN AND EUROPEAN DRY GOODS

Corner of Fort and Queen Sts.

Twenty-five cents pays for a Want ad in the Star. A bargain.

W. G. IRWIN & CO.

AGENTS FOR

Western Sugar Refining Co., San Francisco, Cal. Baldwin Locomotive Works, Philadelphia, Pa. Newell Universal Mill Co., Manufacturers of National Cane Shredder, New York, N. Y. Paraffine Paint Company, San Francisco, Cal. Ohlandt & Co., San Francisco, Cal. Pacific Oil Transportation Co., San Francisco, Cal.

TO WHOM IT MAY CONCERN. A good bath room, with up-to-date furnishings, doesn't cost much. I will be pleased at any time to give you facts and figures concerning the cost of remodeling your bath room. Look this up, you cannot afford to experiment, if you are thinking of building, or contemplating making any changes in the plumbing line, you cannot afford to experiment with cheap plumbing, sooner or later the work will have to be done over again. I DO THE WORK RIGHT, and it costs you no more, the charges for good plumbing are the same as for bad. BATH, THE PLUMBER.

The Pacific Hotel,

1182 Union St., opposite Pacific Club,

Newly Furnished Rooms

The Best Restaurant in the City. MRS. HANA, Proprietor.

A Fine Selection of Christmas... Handkerchiefs

Just the Kind of Presents Your Friend Would Like

We have a large assortment of Plain and Embroidered Linen and Cambric Handkerchiefs for Ladies and Gentlemen. Just received per S. S. Alameda a fine line of Irish Linen and real Lace Handkerchiefs.

Toys! Toys! Toys! At Alteration Prices

Wagons, Wheelbarrows, Velocipedes, Doll Carriages, Horns, Stoves, Dishes, Brooms, Banks, Rubber Balls, Kites, Croquet Sets, Boats, Doll Beds and Dolls.

ALL AT REDUCED PRICE.

E. W. Jordan & Co., Ltd FORT STREET

SPECIAL SALE OF Wash Materials Monday, Tuesday and Wednesday

Figured muslins, lawns and batistes. A handsome variety of patterns and colors. Regular prices 12 1/2, 15 and 20c. per yard. SALE PRICE, 10c.

Balance of our immense stock of holiday goods arrived on this Alameda, and is now being opened and arranged for display. Keep your eyes open for the surprises in

Our Grand Holiday Announcement

N. S. SACHS' DRY GOODS CO., LTD.

Corner Fort and Beretania Streets.

Solid Comfort

Is what one of our leading plantation men says he gets from wearing "SCRIVENS IMPROVED PATENT ELASTIC SEAM DRAWERS."

Nothing to rip or tear, fit comfortably and snugly, are self adjusting, and do not bind about the hips and legs.

They are cool in summer, warm in winter.

Especially adapted for use by heavy, stout men.

See the display of these model garments in our Merchant street window. Try a pair; you will never regret it.

M. McINERNEY, LTD.,

MERCHANT AND FORT STREETS.

Corner Merchant and Alakea Streets

Drink Ice Cold Beer

Primo, Pacific & Rainier \$2.00 Per Dozen Quarts

AT Camara & Company, List of Dealers

Ring Up Telephone Main 492

SHIPPING INTELLIGENCE

ARRIVING.

Saturday, December 5. Stmr. Kinau, Freeman, from Hilo and way ports, at 11 a. m., with 25

cases mineral water, 42 kegs, 8 bbls. bottles, 1 horse, 143 pkgs. sundries. PASSENGERS.

Per stmr. Kinau, December 5, from Hilo and way ports: F. S. Barnard, Mrs. F. S. Barnard, Dr. R. Pischel, Capt. J. B. Doughlas, K. N. Morgan, Mrs. J. A. Mathewman, G. H. Gore, J. W. Mason, O. P. Shipman, Mrs. Matsuda, K. Paketa, K. Matsuda, T. H. Lougher, E. Langer, A. Medeiros, Master Matsuda, James Young, F. Wittman, P. H. Petrie, F. J. Cross, C. V. E. Dove, Young Hing, Lau Chong, James Scott, H. L. Kerr, F. S. Malony, W. W. Thayer, Judge Kahaloalelo, J. P. Medel, F. S. Malony, Dr. W. Peters, Mrs. W. Peters.

GETTING SUGAR ON THE HAWAIIAN

BIG FREIGHTER WILL TAKE 4,000 TONS TO DELAWARE BREAK-WATER.

The ship George Curtis will be the last vessel to get away with sugar for San Francisco before the end of the month. Grinding on many plantations will be begun by the middle of this month. All of the sugar now on hand and that which will come in after grinding begins, will be used to load the S. S. Hawaiian for Delaware Break-water. The steamer is due about the first of next month from Seattle. She

will take about 4,000 tons of sugar from the Hawaiian Islands. She already has a big load of wine and other products of California, so that she will take only a partial load of sugar from these islands. Every effort will be made to getting a load of sugar ready for her, after which the sailing vessels that are in port will be given cargoes.

The German bark Solida is to sail Monday for Costa Rica. She carries for Punta Arenas. The vessel is to take a cargo of hard wood to the United Kingdom for orders. She will be the first vessel that has ever sailed from Honolulu for Punta Arenas.

The S. S. Rosecrans sails this afternoon for Hilo.

The steamer Kinau which arrived today from Hilo and way ports, reports that no vessels were in Hilo when she sailed Friday.

A GENTLEMAN OF FRANCE

The Neill Company open tonight at the Opera House with "A Gentleman of France" taken from Stanley J. Weyman's novel of that name.

This beautiful drama appeals to all classes for it contains plenty of good comedy, beautiful love scenes and thrilling situations. The play will be magnificently staged and the full strength of the company employed.

The sale of seats indicates that the standing room sign will be displayed and every thing points to a financial, artistic and social success.

The following is the cast for tonight: Gaston de Marsac.....James Neill M. de Bruhl.....Sheldon Lewis Henry of Navarre.....Donald Bowles Henry III. of France.....Geo. Bloomquist Vicomte de Turenne.....Jean de Lacey Baron de Romney.....Reginald Travis M. Fresnoy.....Robert Morris Simon Flex.....John W. Burton M. d'Aubertre.....Robert Siddie M. d'Paul.....Elmer Bloomquist Provost-Marshal.....W. H. Harkness Matthew.....Morris Cytron Mark.....Roy Davis Jean Perrault.....Robert Banks Victor Papin.....Ed. Whitcomb Mlle. de la Vire.....Edith Chapman Fanchette.....Lillian Andrews Mme. de Bruhl.....Louise Brownell Comtesse de Grammont.....Ruth Hickstein Mathurine.....Gertrude Keller

SHUTTING OFF COTTON MILLS

Associated Press, Morning Service. BOSTON, December 5.—Widespread curtailment of production in cotton mills is expected owing to the great cost of the raw material.

TRANSVAAL MASKED ROBBERS.

Associated Press Cable to the Star. RANDSPONTIN, December 5.—Masked robbers held up the Robinson bank early this morning and got away with £3000.

MORE JURORS SUMMONED.

Judge Robinson this morning drew a jury for his court for the week after next. The following names were drawn from the box: E. J. Church, T. R. Mossman, J. H. Taylor, F. J. Turner, J. B. Pakele, H. J. Mossman, J. Enright, C. W. Booth, A. K. Ozawa, Edgar Henriques, Frank P. McIntyre, Robert Kamakaea, James Young, Jesse P. Makalinal, R. J. Nahora Hipa, C. Spencer, A. A. Montano, Thomas Horan C. B. Lemson, John F. Soper, H. S. Swinton, John Paakaula, E. H. Wadehouse, Abraham Kekai, W. R. Campbell, J. L. Coulson.

JURY WAIVED CASES.

Judge Robinson has made the following order for the calling of the jury-waived calendar, and will not have a jury next week:

"At 10 o'clock a. m. Monday, December 7, a. m. 1903, the Honorable W. J. Robinson, Third Judge, will call all even-numbered jury waived cases on the September, 1903, term calendar (not heretofore previously disposed of), from and including No. 402 to and including No. 462.

"Cases will be called for the purpose of having them set down as ready for trial, or for other disposition.

"Cases in which parties answer ready will be taken up and tried in their order when reached. By order of the court:

"M. T. SIMONTON, "Clerk to Third Judge."

NO LAW FOR ELECTION CONTEST

A general plea to the jurisdiction of the court has been filed in the Supreme court by Deputy Attorney General Peters, who will argue it on Monday, with W. T. Rawlins, county attorney elect, McCants Stewart appearing for the other side. The attorney general's department appears in the name of each of the candidates and election officers who were made defendants in the matter of the petition of C. B. Maille and others. The following is a sample of the plea filed in behalf of the candidates, those of the election officers being the same with the omission of the fifth paragraph:

"Now comes W. T. Rawlins one of the respondents named in the above entitled cause, in his own proper person, for the sole purpose of pleading to the jurisdiction of said Court, and for no other jurisdiction of said Court, and for no other, and says that this court ought not to have or take cognizance of the said action for the following reasons:

"1st. That the supposed cause of action above named purports to be a contest of an election within the Territory of Hawaii on the 3rd day of November, 1903, said action having been duly held in accordance with law, whereas there are no provisions of law permitting or allowing a contest of an or any election held in accordance with law within the Territory of Hawaii.

"2nd. That the above supposed cause of action purports to be a contest of an election held on the 3rd day of November, 1903, for officers of the county of Oahu, whereas there are no provisions of law permitting or allowing a contest of election for County officers.

"3rd. That the above supposed cause of action purports to be a contest by thirty duly qualified voters of the 5th Election District of the Territory of Hawaii, of an election for County officers for the County of Oahu, held on the 3rd day of November, 1903, whereas there are no provisions of law within the Territory of Hawaii permitting or allowing thirty, or any number of qualified voters of the 5th Election District of the Territory of Hawaii, or of any Election District, or at all, to contest an election for County Officers for the County of Oahu.

"4th. That the cause of action aforesaid, if any ever accrued to said petitioners, is wholly within the jurisdiction of the Honorable Circuit Court, within and for the First Judicial Circuit of the Territory of Hawaii, and is not within the jurisdiction of the above named court.

"5th. That the certificate of election issued by the Secretary of the Territory to this respondent as District Attorney of the County of Oahu, is not subject to impeachment in this court or cause or at all.

"Wherefore, This respondent prays that the above named proceedings be dismissed and for his costs and disbursements therein."

SAMUEL K. KA-NE DIED THIS MORNING

S. K. Ka-ne, one of the most prominent and best known Hawaiian lawyers of the Territory, died this morning at 6:19 o'clock, at his residence on School street near Nuuanu, after an illness of three months. The funeral will be held from the house tomorrow (Sunday) afternoon at 2 o'clock. The interment will be at Nuuanu cemetery.

Samuel Kapoi Ka-ne was born July 31, 1858, at Waimanalo, Koolau-poko, Oahu. He was educated at the Royal School, Honolulu, and later at a boarding school at Hanalei, Kauai. He studied law under W. L. Holo-kahiki, and was admitted to practice in the courts of inferior jurisdiction January 31, 1884, and in the Supreme Court December 11, 1885. He was a member of the Council of State under the Republic of Hawaii from 1896 to 1900. He was a member of the Tax Appeal Court for the First Judicial Circuit, and of the Board of Health, at the time of his death. He was a member of the Hawaiian Bar Association and sat on the Supreme Court bench October 18, 1895, in the absence of Mr. Justice Bickerton.

Mr. Ka-ne's father died about two years ago, at a very advanced age, he having been born before the missionaries arrived, and having been one of the early converts to Christianity. Mr. Ka-ne leaves a widow, two brothers, Benjamin K. and Louis K. Ka-ne, and one sister, Mrs. William Kekeli. The funeral services will be conducted by the Rev. Louis pastor of the Kaunakapili church, of which the deceased was a member.

VOLCANO IS ACTIVE.

The steamer Kinau arrived at 11 o'clock this morning from Hilo and way ports. Purser Beckley reports both Mokuaweweke and Kilauea active. The former is especially active.

CHRISTMAS SALE.

Consignment of Beautiful Art Goods To Be Sold.

Will E. Fisher has instructions to sell at Evening Auction Sale, the finest line of Japanese Art Goods, probably ever offered in this market, comprising:

Birds-in-Brace, Ornaments and Tea and Coffee Sets in Silver, Cloisonne, Satsuma, Kutain, Bronze, Egg-shell Porcelain, Carved Ivory and Tortoise Shell.

Hall and Drawing-room Ornaments in Porcelain, Cloisonne and polished and hammered Brass.

Parlor and Dining-room Screens and Panels in Inlaid Ivory, Lacquer and Silk.

Magnificent Carved Parlor Furniture, large round Table, Oblong Tables, Roman and Dragon Chairs, large antique Settee, &c.

Antique Curios in Lacquer, Bronze, &c., all selected by Japanese Experts with the approval of Col. Macfarlane, through the great firm of Japanese Art Dealers, "Samurai Shokai Co. at the International Exhibition held this year in Japan.

Sale will take place Saturday evening next, Dec. 12th, at 7:30, in the large Corner Store of the new Kapoli Building on King and Alakea streets. Goods will be on view next Friday and Saturday.

NEW ADVERTISEMENTS

BY AUTHORITY

NOTICE.

Opening of bids for the Armory has been postponed to December 21st, 1903.

C. S. HOLLOWAY, Superintendent of Public Works.

December 5, 1903.

SHERIFF'S SALE NOTICE.

Under and by virtue of a certain Execution issued out of the Supreme Court of the Territory of Hawaii, on the 14th day of November, 1903, in the matter of Henry Smith, Trustee, Plaintiff, vs. Mele Keawe (w), Defendant, I have, on this 5th day of December, A. D. 1903, in Honolulu, Island of Oahu, Territory of Hawaii, levied upon, and shall offer for sale and sell at public auction, to the highest bidder, at the Police Station, Kalakaua Hale, in said Honolulu, at 12 o'clock noon of Tuesday, the 5th day of January, A. D. 1904, all the right, title and interest of the said Mele Keawe (w), Defendant, in and to the following described property unless the sum of Two Hundred and Forty and 5/100 Dollars, that being the amount for which said execution issued, together with interest, costs and my fee and expenses are previously paid:

1. Those two certain wooden buildings

situated on that land hereinafter referred to as Hookaea's land, which said land adjoins lots of land partitioned off to D. W. Kalua hereinafter described and referred to.

Said buildings to be removed at purchaser's expense.

All that certain lot of land situate in Kamohili, Honolulu, Oahu, having a frontage of 85 feet and a depth of 375 feet, being a portion of Royal Patent Grant 177 to P. J. Gallek, and being the same lot of land that was partitioned off to one D. W. Kalua, deceased, located on the makai side of Bereunui street, on the Waikiki side of Hookaea's lot, and on the Ewa side of Kahaunakapu's lot, and more particularly described as follows:

1. Hema 68' 47' Hk 85 kap ma A-nu-lu-Beritania;

2. Hema 16' 15' Kom 278 kap 9 in. ma Apana 6;

3. Akau 69' Kom 85 kap ma Ke A-nu-lu Hui (Young street)

4. Akau 16' 15' Hk 278 kap ma Apana 4 a hiki i kahi i hoomakali. Area 55-100 of an acre as per metes and bounds recorded in the Office of the Registrar of Conveyances in said Honolulu in Liber 119, Page 297.

A. M. BROWN, High Sheriff, Territory of Hawaii, Honolulu, Oahu.

AUCTION SALE

OF FERNS, PALMS, BEGONIAS, FRUIT AND ORNAMENTAL TREE PLANTS.

A Large Number and Nicely Potted.

FRIDAY, DECEMBER 11, 1903

At 9 o'clock A. M.

At the residence of Mrs. Henry Davis on Wilder Avenue opposite Oahu College Campus.

WILL E. FISHER, AUCTIONEER.

Take Electric car to end of Wilder Avenue.

IN THE CIRCUIT COURT OF THE FIRST CIRCUIT, TERRITORY OF HAWAII.

At Chambers.—In Probate.

In the Matter of the Estate of H. F. Glade, deceased.

Order of notice of hearing petition for allowance of final accounts, distribution and discharge.

On reading and filing the Petition and Accounts of J. E. Hackfeld, sole surviving Executor of the Estate of H. F. Glade, deceased, wherein he asks to be allowed \$3058.00, and asks that the same may be examined and approved, and that a final order may be made of distribution of the property remaining in his hands to the persons thereto entitled, and discharging him and his sureties from all further responsibility as such executor.

It is ordered, that Monday, the 11th day of January, A. D. 1904, at ten o'clock a. m. before the Judge of said Court at the Court Room of the said Court at Honolulu Island of Oahu, be and the same hereby is appointed as the time and place for hearing said Petition and accounts, and that all persons interested may then and there appear and show cause, if any they have, why the same should not be granted, and may present evidence as to who are entitled to the said property and that notice of this order, in the English language, be published in the Hawaiian Star a newspaper printed and published in Honolulu, once a week for three successive weeks, the last publication to be not less than two weeks previous to the time therein appointed for said hearing.

Dated at Honolulu, this 3rd day of December, 1903.

W. J. ROBINSON, Third Judge of the Circuit Court of the First Circuit.

Kinney, McClanahan & Cooper, Attorneys for Petitioner. 4ts—Dec. 5, 12, 19, 26.

situated on that land hereinafter referred to as Hookaea's land, which said land adjoins lots of land partitioned off to D. W. Kalua hereinafter described and referred to.

Said buildings to be removed at purchaser's expense.

All that certain lot of land situate in Kamohili, Honolulu, Oahu, having a frontage of 85 feet and a depth of 375 feet, being a portion of Royal Patent Grant 177 to P. J. Gallek, and being the same lot of land that was partitioned off to one D. W. Kalua, deceased, located on the makai side of Bereunui street, on the Waikiki side of Hookaea's lot, and on the Ewa side of Kahaunakapu's lot, and more particularly described as follows:

1. Hema 68' 47' Hk 85 kap ma A-nu-lu-Beritania;

2. Hema 16' 15' Kom 278 kap 9 in. ma Apana 6;

3. Akau 69' Kom 85 kap ma Ke A-nu-lu Hui (Young street)

4. Akau 16' 15' Hk 278 kap ma Apana 4 a hiki i kahi i hoomakali. Area 55-100 of an acre as per metes and bounds recorded in the Office of the Registrar of Conveyances in said Honolulu in Liber 119, Page 297.

A. M. BROWN, High Sheriff, Territory of Hawaii, Honolulu, Oahu.

COMMISSIONER'S SALE OF REAL ESTATE

By virtue of a Decree made and signed by the Honorable W. J. Robinson, Third Judge of the Circuit Court for the First Circuit of the Territory of Hawaii, dated October 28th, 1903, and filed in that certain suit in equity pending in said Court and before said Judge at Chambers, wherein Kapoli Estate Limited et al are Plaintiffs, and R. William Holt, and George H. Holt are Defendants, the undersigned, William Blaisdell, who has been and is appointed the Commissioner of said Circuit Court for the purpose of executing said Decree, and has duly and regularly qualified as such Commissioner, will offer for sale, at public auction, at the front door of the Court House, Aliiolani Hale, in the city of Honolulu, in said Territory, at 12 o'clock noon on Tuesday the 15th day of December 1903, all and singular the following described property, and all and singular the right, title and interest therein of said R. William Holt and of George H. Holt, that is to say:

All that certain tract, piece or parcel of land situated in Kalahepa, Kalii, Honolulu aforesaid, bounded and described as follows:

Commencing at the East corner of a stone on the East edge of the alley adjoining Hapuna, 50 links from the East corner of the kulena of Hapuna, and running:

N. 22° 20' W., 296 links along Hapuna to ridge, and then return to place of commencement;

S. 77° W., 50 links along East corner of Hapuna;

N. 46° 30' W., 222 links;

S. 43° 45' W., 751 links;

S. 53° E., 345 links;

N. 28° E., 25 links along Hapuna to Pohakaloa;

S. 51° E., 35 links;

S. 22° 20' W., 298 links;

S. 35° 30' W., 380 links along Pohakaloa to Lulin;

N. 42° 30' W., 410 links;

N. 36° W., 740 links along auwai adjoining Luala ridge; thence running 1 1/2 chains to place of commencement; containing an area of 103.80 acres; and being the same premises described as Apana 4 in Royal Patent (Grant) No. 2921 to J. Silva; and being the same premises described in a certain mortgage executed by said R. William Holt and George H. Holt and dated the 5th day of October 1900, and recorded in the Hawaiian Registry of Deeds in Liber 214 at Page 276.

Terms of sale: Ten per cent of the purchase price to be paid in United States Gold Coin upon the fall of the hammer; the balance in like Gold Coin to be paid upon the tender of a deed executed by the undersigned Commissioner of said premises, after confirmation of sale by said court.

For further particulars apply to Clarence W. Ashford, Attorney for said Plaintiffs, Rooms 2 and 4, Kapoli Building, Honolulu.

Dated this 7th day of November 1903.

WILLIAM BLAISDELL, Commissioner.

LEGAL NOTICES.

IN THE CIRCUIT COURT OF THE FIRST CIRCUIT, TERRITORY OF HAWAII.

At Chambers.—In Probate.

In the Matter of the Estate of Mary E. Green, deceased.

Order of Notice of Hearing Petition for Allowance of Final Accounts, Distribution and Discharge.

On reading and filing the petition and accounts of Laura E. Green, executrix of the will of Mary E. Green, wherein she asks to be allowed \$281.55 and charges herself with \$755.10, and asks that the same may be examined and approved, and that a final order may be made of distribution of the property remaining in her hands to the persons thereto entitled, and discharging her and her sureties from all further responsibility as such executrix.

It is ordered, that Monday, the 21st day of December, A. D. 1903, at ten o'clock a. m. before the Judge of said Court at the Court Room of the said Court at Honolulu Island of Oahu, be and the same hereby is appointed as the time and place for hearing said Petition and Accounts, and that all persons interested may then and there appear and show cause, if any they have, why the same should not be granted, and may present evidence as to who are entitled to the said property. And that notice of this order, in the English language be published in the Hawaiian Star newspaper printed and published in Honolulu once a week for three successive weeks, the last publication to be not less than two weeks previous to the time therein appointed for said hearing.

Dated at Honolulu, this 13th day of November 1903.

Smith & Lewis for petitioner.

GEO. D. GEAR, Second Judge First Circuit Court. Nov. 13, 21, 28, Dec. 5.

IN THE CIRCUIT COURT OF THE FIRST CIRCUIT, TERRITORY OF HAWAII.

At Chambers.—In Probate.

In the Matter of the Estate of August Kraft, deceased.

Order of Notice of Hearing Petition for Allowance of Final Accounts, Distribution and Discharge.

On reading and filing the petition and accounts of W. L. Howard, administrator with the will annexed of the estate of August Kraft wherein he asks to be allowed \$1976.23 and charges himself with \$18,378.37, and asks that the same may be examined and approved, and that a final order may be made of distribution of the property remaining in his hands to the persons thereto entitled, and discharging him and his sureties from all further responsibility as such Administrator.

It is ordered, that Monday, the 21st day of December, A. D. 1903, at ten o'clock a. m. before the Judge of said Court at the Court Room of the said Court at Honolulu, Island of Oahu, be and the same hereby is appointed as the time and place for hearing said Petition and Accounts, and that all persons interested may then and there appear and show cause, if any they have, why the same should not be granted, and may present evidence as to who are entitled to the said property. And that notice of this Order, in the English language, be published in the Hawaiian Star newspaper printed and published in Honolulu, for three successive weeks, the last publication to be not less than two weeks previous to the time therein appointed for said hearing.

Dated at Honolulu, this 13th day of November 1903.

GEO. D. GEAR, Second Judge First Circuit Court. Nov. 13, 21, 28, Dec. 5.

25% REDUCTION

AT

The New Era Hotel

Fort Street above Vineyard.

FROM SEPTEMBER 1ST, 1903.

Telephone 2841 Blue.

Fire Insurance!

THE B. F. DILLINGHAM CO., LIMITED,

General Agents for Hawaii

Atlas Assurance Company of London.

Phoenix Assurance Company of London.

New York Underwriters Agency.

Providence Washington Insurance Company.

Phoenix Insurance Company of Brooklyn.

Albert Raas, Manager

Insurance Department office Fourth Floor, Stangenwald Building.

Twenty-five cents pays for a Want ad in the Star. A bargain.

A Home Company Capital \$50,000

Organized under the laws of the Territory of Hawaii.

THE HAWAIIAN REALTY AND MATURITY CO., LTD.

Loans, Mortgages, Securities, Investments and Real Estate. Homes Built on the Installment Plan.

Home Office—McIntyre Building, Honolulu, Territory of Hawaii

The Hawaiian Realty and Maturity Co

L. K. KENTWELL, General Manager

BRACE UP!!!

Our line of Belts and Suspenders is up-to-the-hour in style and comfort. MEN AND BOYS' LEATHER BELTS. PRESIDENT AND CROWN SUSPENDERS.

LEIVINGSTON'S Young Building

Star Want ads pay at once.

A Summer Proposition.

Well, now there's the ICE QUESTION! You know you'll need ice; you know the necessity in hot weather. We advise you are anxious to get that ice which will give you satisfaction, and we'd like to supply you. Order from OHIO ICE & ELECTRIC CO.,

Telephone 3151 Blue, Postoffice Box 906.

W. G. IRWIN & CO., LTD.

Wm. G. Irwin, President and Manager; Claus Sprackels, First Vice-President; W. M. Giffard, Second Vice-President; H. M. Whitney Jr., Sec'y and Treasurer; Geo. J. Ross, Auditor.

SUGAR FACTORS, COMMISSION AGENTS

AGENTS FOR THE Oceanic Steamship Company of San Francisco Cal.

AGENTS FOR THE

Scottish Union National Insurance Company of Edinburgh; Wilhelm of Magdeburg General Insurance Company.

Associated Assurance Co., Ltd., of Munich and Berlin.

Alliance Marine and General Assurance Co., Ltd., of London.

Royal Insurance Company of Liverpool.

Alliance Assurance Company of London.

Rochester German Insurance Company.

Weak Nerves

Are you ever nervous? Do you lie awake nights, suffer from despondency, and often feel discouraged? It's a terrible life to lead. Don't suffer in this way any more. Get strong and well.



Follow the advice of Mrs. Thomas Pritchard, of Adelaide, South Australia. She sends us her photograph and says: 'I had a terrible illness which left my nerves all out of order. I had severe headaches, indigestion, sleeplessness, and my nerves were just as weak as they could be. I then tried Ayer's Sarsaparilla and I began to improve at once. My appetite returned, my digestion improved, and my nerves became strong and steady.'

AYER'S Sarsaparilla

There are many imitations "Sarsaparillas." Be sure you get Ayer's.

Use Ayer's Pills with the Sarsaparilla. These are purely vegetable pills. They cure constipation, biliousness, sick headache.

Prepared by Dr. J. C. Ayer & Co., Lowell, Mass., U.S.A.

Starlevant Drug Co.,



160 Hotel Street - - Oregon Block TELEPHONE MAIN 151.

Castle & Cooke, Ltd

Life and Fire

Insurance Agents

AGENTS FOR

New England Mutual Life Insurance Co OF BOSTON.

Aetna Fire Insurance Co., OF HARTFORD, CONN.

A PHILOSOPHER DYING

Associated Press, Morning Service. LONDON, December 5.—Herbert Spencer's condition is grave. Herbert Spencer, the last of the great literary men who made the reign of Queen Victoria notable, has been seriously ill at his home near Manchester for nearly six months. He is now eighty-three years old and has been in feeble health for a long time.

Herbert Spencer is perhaps the most comprehensive thinker of the century; he is the philosopher who, in his writings, has treated the whole universe from one standpoint and who has brought together and collected almost the whole sum of human knowledge. He is the only man who has taken his cosmic theory and worked it out through all the separate fields of knowledge as thoroughly as if he had confined himself to but one science. This great accomplishment of Spencer, given to the world as his system of synthetic philosophy, is truly his life work. To it he has given all the energies of half a century of unceasing toil. From the time his first book "Social Statics" was published in 1850, his work has gone steadily on against obstacles that would have daunted any other man, until the great system has been finally brought to an end and the ideals which at the beginning of his life he hardly dared cherish for a moment, have been realized.

MAY SAVE THE FLORA. Associated Press, Morning Service. VICTORIA, B. C., December 5.—Admiral Rickford is superintending efforts to float H. M. S. Flora. There is a bare possibility of saving the vessel.

DOWIE CREDITORS SANGUINE. Associated Press, Morning Service. CHICAGO, December 5.—Dowie creditors representing \$100,000 of indebtedness, oppose the efforts to force Dowie into bankruptcy, claiming that he is solvent.

TREATY DELIVERED. Associated Press, Morning Service. PANAMA, December 5.—The signed Panama treaty, wrapped in American and Cuban flags, was ceremoniously delivered today to United States Consul Gudge.

BOODLING IN SAN FRANCISCO. Associated Press, Morning Service. SAN FRANCISCO, December 5.—The Grand Jury has begun an inquiry into the charges of corruption in the County Clerk's office.

Recent investigations in San Francisco brought to light the fact that about \$40,000 has been stolen from the city through the County Clerk's office during the last seven years. Lawyers paid fees into the office in many cases which were never recorded on the books of the office and recently the San Francisco police have been trying to locate V. F. Northrup, ex-probate clerk, who is charged with having embezzled over \$2,000 in fees.

FOR MACEDONIAN REFORM. Associated Press, Morning Service. LONDON, December 5.—Negotiations have begun for an international administration of Macedonia similar to that of Crete.

The island of Crete, a Turkish dependency, was taken out of the hands of direct Turkish rule by the powers and is now governed by the latter. The powers select a High Commissioner who is the head of the Cretan government and as a law-making body he has the Bule, or Assembly, of sixty-four members elected by the people every two years, to assist him. Questions of foreign relations are determined by the representatives of the powers at Rome.

ROOSEVELT, December 5.—President Roosevelt and Senator Hanna had a long and cordial conference at the White House during the day over party affairs.

WEDS A DALY ACTRESS. Associated Press, Morning Service. NEW YORK, December 5.—William Astor Chanler has married Minnie Ashley the actress.

The marriage to an actress of William Astor Chanler, millionaire, explorer and politician is the culmination

of a romantic courtship of about four years' standing. Nearly three years ago when Minnie Ashley, actress and singer of the Daily company in New York, caused a sensation among the residents of Great Neck, Long Island, by trying to buy a home in that aristocratic community. Residents were up in arms against what they chose to regard as an intrusion upon their exclusiveness, and a committee of citizens was formed for the purpose of frustrating Miss Ashley's purpose. When the committee called upon the actress to request her not to purchase the property on the grounds that they did not wish to have actor folk living in the community, she burst into tears and exclaimed: "Why, I am going to retire from the stage next year! I'm going to marry William Astor Chanler!" She revealed the secret then only after her pride had been stung by the town-people objecting to an actress when such a man as William Astor Chanler took an exactly opposite view of this particular representative of the calling of the playhouse. Miss Ashley has been described as one of the most beautiful women on the American stage. She has long curly hair and her face has been described as the "girlish innocence" face. She was married in 1896 to William H. Sheldon, an actor, but separated from him three years later.

Advertisement for Quina Labroche, The Tonic Par Excellence. A Wine Cordial. The best specific remedy for Malarial and Typhoid Fevers, Colds, Influenza, &c. Z. FODOR & Co., 20-22 N. WILLIAM ST., N.Y.

CORPORATION NOTICES.

SPECIAL MEETING.

A special meeting of the stockholders of The Bank of Hawaii Ltd. for the purpose of electing an Auditor has been called by the Vice-President to be held Wednesday December 9th, at 9:30 a.m. F. C. ATHERTON, Secretary. Honolulu, December 1, 1903.

Election of Officers.

Notice is hereby given that at the annual meeting of the shareholders of the Onomea Sugar Company, held this day, the following named officers were duly elected to serve for the ensuing year: P. C. Jones, President; C. M. Cooke, Vice-President; O. M. Vesp, 2nd Vice-President; Geo. H. Robertson, Treasurer; E. F. Bishop, Secretary; A. P. Welch, Assistant Treasurer; Geo. R. Carter, Director; Ed. Pollitz, Director; T. R. Robinson, Auditor. W. W. NORTH, Acting Secretary. Honolulu, November 6th 1903.

For Sale

DUCK TENT. Large with side curtains and poles. Will sell for one-fourth cost. PHAETON. Good Rubber Tire Phaeton in excellent condition. Rubber Tires almost new. Very cheap. HOMING PIGEONS. Home-bred and imported stock. Beautiful birds. \$2.00 per pair. \$5.00 half dozen. FERTILIZER. Poultry and Pigeon Guano. Fine for plants. \$1.00 per bag. \$1.25 per bag delivered to any part of city or boat. Enquire: WALTER C. WEEDON, Room 5 McIntyre Building.

Advertisement for E. O. Hall & Son, Ltd. Don't Throw a Rock. At a Pheasant, and expect to get it. If you really wish the bird, use an L. C. Smith shot gun. By the Nevada, December 2nd we received another shipment of L. C. Smith shot guns made up especially for the shooting in these islands and fitted with the latest in rubber butt plates. Call and examine this shipment if you are interested in the finest thing made in the way of a shot gun. A large shipment of Selby Smokeless and Black powder Cartridges also just received fresh from the factory. E. O. HALL & SON, LTD.

Advertisement for California Rose Creamery Butter. Weigh the butter you are getting and see if your pound weighs sixteen ounces. California Rose Creamery Butter is guaranteed a full sixteen ounces of the finest butter made. This butter comes from the rich alfalfa district of California and is always pure and sweet. Used by Honolulu's best families almost exclusively. We deliver it on ice to your residence. Sold only by Henry May & Co., LIMITED. RETAIL 22. TELEPHONES. WHOLESALE 92.

Advertisement for K. Fukuroda, THE BEST DRY GOODS STORE IN THE CITY. Also manufacturers of a fine line of STRAW HATS for Ladies and Gentlemen. HATS trimmed in the very latest styles at lowest prices.

NOTICE. The undersigned announce that they have this day formed a partnership for the general practice of law under the firm name of Atkinson, Judd and Mott-Smith, with offices in the Judd Building. ALBERT F. JUDD, E. A. MOTT-SMITH. Honolulu, December 1, 1903. A. L. C. ATKINSON. Persons needing, or knowing of those who do need protection from physical or moral injury, which they are not able to obtain for themselves, may consult the Legal Protection Committee of the Anti-Saloon League, 9 McIntyre Building. Want ads in the Star bring quick results. Three lines three times for 25.

\$100.00 IN GOLD COIN

Christmas Money FOR Alert Youngsters Four Cash Prizes: 1st Prize - \$50.00 2nd Prize - 25.00 3rd Prize - 15.00 4th Prize - 10.00 Besides Liberal Commissions

For School Children Campaign NOW OPEN And Closes On Saturday December 19 Prizes Will Be Awarded On December 22

The Star's idea is to gain the services of every bright school boy and girl in Honolulu and is willing to pay liberally for their aid. The work will not interfere with their school duties; it can be accomplished after hours by devoting one or more hours each day to a thorough canvass of their neighborhood to gain subscribers for the Star. For this service we will pay school children ONE HALF of all new subscriptions they may receive. If 75 cents is collected for one month the boy or girl will receive 37 1/2 cents; if \$2.00 is collected for one quarter, we will hand over one dollar; if \$8.00 is collected for one year, we will give the little business man or little business woman \$4.00. In addition to the generous commission the Star will award the sum of One Hundred Dollars in gold coin, divided into four prizes. The boy or girl who secures the largest number of new subscribers will be paid \$50.00; prize for second highest number \$25.00; third prize, \$15.00; fourth prize, \$10.00. With energy, perseverance and tact, any bright school girl or boy may easily make some Christmas money and win a cash prize and the reward in each case will be worth the effort. At this season of the year it is an easy matter to gain subscribers for The Star.

Details of Plan Subscription envelopes of the following form, which may be had at THE STAR office, must be filled out in ink by the subscriber to constitute a bona fide new subscription. Subscription made in any other form will not be considered in the contest. THE HAWAIIAN STAR, Honolulu, Hawaii: I desire to become a subscriber to THE HAWAIIAN STAR through the personal solicitation of name (of boy or girl) Address: Please deliver THE STAR beginning I certify that I am not a subscriber at present and that this is a bona fide subscription. I enclose 75 cents for one month's subscription, which please continue until further notice. If at any time after the first month I decide that I do not wish the paper continued, I will so notify the office. Subscriber's Name Address 1903 The time to start to work is right away, for those who start in with a will early in the contest are most apt to reap the richest harvest. The contest ends December 19, 1903. Any one calling at The Star Office will be given a sufficient quantity of subscription envelopes, as above, to start the girls and boys at work.

All Nations EXCEPT CARRIE Drink Primo Lager

C. BREWER & CO., LIMITED
QUEEN STREET,
HONOLULU H. T.

...AGENTS FOR...
Hawaiian Agricultural Company, Ono-
mea Sugar Company, Honoumuli Sugar
Company, Walluku Sugar Company,
Ookala Sugar Plantation Company,
Haleakala Ranch Company, Kapapala
Ranch.

Planters' Line Shipping Company,
Charles Brewer & Co.'s Line of Bos-
ton P. kets.
LIST OF OFFICERS.
Charles M. Cooke.....President
Geo. H. Robertson...V-Pres. & Mgr.
E. Faxon Bishop.....Treas. & Sec'y.
W. F. Allen.....Auditor
P. C. Jones.....Director
H. Waterhouse.....Director
G. R. Carter.....Director

GENUINE REDUCTION SALE

NOW ON AT

S. OZAKI,

WAVERLEY BLOCK
HOTEL STREET.

Closing Out Sale!

BOOKS AND STATIONERY RETAILED
AT
WHOLESALE PRICES

20 to 30 per cent Discount
On All Sales From
25 Cents Up

The entire stock must be sold! We
are simply sacrificing the goods in or-
der to get the money out of the stock
as quickly as possible.

GOLDEN RULE BAZAAR

156 HOTEL STREET

S. SAIKI,

Bamboo Furniture
AND
PICTURE FRAMES
Neat and Handsome
Designs, made to order.
563, Beretania Street, near Punehowl.

The Island Meat Company,

WHOLESALE AND RETAIL BUTCHERS.
Herbert E. Gares, Manager.
Hind, Rolph & Co., Agents.
Located on Fort Street, opposite Love Building.
NOW OPEN FOR BUSINESS

Supply of Island Turkeys Now On Hand From Kahikinui Ranch Orders for Christmas Turkeys Now Taken

A supply of the finest quality of Island meats, poultry and game,
together with all other market goods, also imported goods which are
in demand by the public will always be on hand.
Telephone Main 76. Honolulu, T. H.

BUDS AND FLOWERS OF HOME LIFE.

Paine's Celery Compound Makes and Keeps the Children Well and Strong.

Mothers Make It the Home Medicine For the Little Ones.

The children, God bless them, are the buds
and flowers of our homes. Without their
prattle and hearty laughter, our homes would
be desolate. They should ever be carefully
tended in childhood and youth, if we expect
them to ripen into perfect men and women.
In the home and at school, the children
have their times of ill health and suffering.
We often note the pallid and bloodless cheeks,
heavy eyes, nervous movements, and twitch-
ings of limbs and muscles. They complain of
headache, drowsiness, weariness, dyspepsia,
and indigestion. All such symptoms and ail-
ments mean that the seeds of disease will have
a fast and firm hold, unless proper measures
are taken to restore a perfect condition of
health.

Thousands of wise and prudent parents have
made their children happy, healthy, and vigor-
ous by giving them nature's medicine, Paine's
Celery Compound. In many severe and com-
plicated cases, Paine's Celery Compound has
restored health when the little ones were given
up by physicians.

If your dear ones are not as hearty, strong,
and rugged as they should be, try the health
giving virtues of Paine's Celery Compound.
It makes and keeps the children well.

The house is made bright and cozy with DIAMOND DYES

Pillows and table covers, curtains,
portieres, sifflans, tidies, and chair
coverings, may be dyed beautiful
and artistic colors.

Direction book and 45 dyed samples free.
DIAMOND DYES, Burlington, Vt.

IN THE CITY'S CHURCHES

THE SECOND SUNDAY IN ADVENT Collect for the Day.

Blessed Lord, who hast caused all
holy Scriptures to be written for our
learning; Grant that we may in such
wise hear them, read, mark, learn, and
inwardly digest them, that by patience,
and comfort of thy holy Word, we may
embrace, and ever hold fast the
blessed hope of everlasting life, which
thou hast given us in our Saviour Jesus
Christ. Amen.

CENTRAL UNION CHURCH, Bere-
tania and Richards streets. Rev. Wil-
liam Morris Kincaid, pastor. 1513 Thur-
ston avenue. Sunday school and Bible
class, 9:30; public worship and sermon,
11; Y. P. S. C. E. prayer meeting, 6:30;
public worship and sermon, 7:30; pray-
er meeting, Wednesday, 7:30.

11 a. m., Rev. William Morris Kincaid
will preach. Subject, "The Problem of
Immortality."

7:30 p. m., Mr. Kincaid continues his
Sunday evening talks, based on his ob-
servations and experiences in his re-
cent visit to the Holy Land, the subject
being, "Rambles About Jerusalem." This
talk will be followed by two oth-
ers, viz.: "Bethlehem, Hebron and the
Dead Sea," and "A Journey to Nazareth
and the Sea of Galilee."

6:30 p. m., Christian Endeavor Meet-
ing, subject, "Which One of Jesus' Par-
ables Do You Like Best, and Why?"
Lead by Rev. Arthur Logan.

CHINESE CHURCH, Congregational,
Fort street above Beretania. Rev. Ed-
ward W. Thwing, acting pastor. Sun-
day school, 9:30; preaching service, 11;
Sunday school in English, 2:30; evening
service, 7:30; prayer meeting, Wednes-
day, 7:30.

CHRISTIAN CHURCH, Alakea street
near King. E. S. Muckley, pastor, 1244
Wilder avenue. Sunday school, 9:45,
morning service, 11; evening service,
7:30; Young People's meeting, 6:30.
Prayer meeting, Wednesday, 7:30.

S. Muckley will preach at 11 a.
m. and 7:30 p. m. Bible school at 9:45
a. m. Christian Endeavor prayer meet-
ing at 6:30 p. m. A cordial invitation
to all who would enjoy these services.

GERMAN LUTHERAN CHURCH—
Rev. Mr. Falmy, pastor, 976 Beretania
street. Sunday school 10; morning
services, 11.

DEUTSCHE EVANGELISCH LU-
THERISCHE KIRCHE.—Pastor Fin-
my, 976 Beretania street. Kinder Got-
tesdienst, 10; Gottesdienst, 11 Uhr.

JAPANESE CHURCH, Congregation-
al, Rev. S. Okubo, pastor, corner of
Nuuanu and Kukui streets. Morning
service, 11; evening service, 7:30; pray-
er meeting, Wednesday, 7.

JAPANESE METHODIST EPISCO-
PAL CHURCH, hall at the end of Ku-
kui street near St. Louis College. Rev. G.
Motokawa, pastor, School street,
near the bridge. Class meeting, 8:30,
Sunday school, 10; morning service, 11;
evening service, 7:45; prayer meeting,
Wednesday, 8.

KAUMAKAPILI CHURCH, Congre-
gational, King and Achi Lane. Rev. W.
N. Lono, pastor. Morning service, 11;
evening service, 7:30.

KAWAIAHAO CHURCH, Congrega-
tional, King and Punehowl streets.
Rev. Henry H. Parker, pastor, 411 Judd
street. Sunday school, 10; morning
service, 11; Christian Endeavor, 6:30;
evening service, 7:30; prayer meeting
Wednesday, 7:30.

MAKIKI CHAPEL, Japanese, Con-
gregational, Kinau street. Morning
service, 8.

METHODIST EPISCOPAL CHURCH
Beretania and Miller streets. Rev.
George L. Pearson, pastor, 408 Bere-
tania. Sunday school, 10; morning ser-
vice, 11; Epworth League 6:30; evening
service, 7:30; prayer meeting, Wednes-
day, 7:30; Bible study, Thursday 7:30.
Monthly meetings: First Monday, Wo-
man's Home Missionary Society, 2:30;
Epworth League business meeting, 7:30;
first Tuesday, Methodist Men's Club,
7:30; third Friday, Ladies' Aid Society,
2:30. Sermon morning and evening by
the pastor.

The pastor will preach morning and
evening.

11 a. m., "The Christian Warrior and
His Divine Panoply."
6:30 p. m., Epworth League, subject,
"Last and Helpless: A Man Without
Christ."

7:30 p. m., sermon, "The Blessing of
the Tribes of Israel: Where Are the
Last Tribes?"

MORMON CHURCH: CHURCH OF
JESUS CHRIST OF LATTER DAY
SAINTS, Punehowl street above
School street. Elder William M. Wad-
daup, in charge. Sunday school, 10;
preaching, 11:30; Young People's Mu-
tual Improvement Association, 7; pri-
vate meeting for children, Friday, 8;
Relief Society meeting Saturday, 10.
Free to all, no contributions, services in
Hawaiian.

PORTUGUESE PROTESTANT
CHURCH, Congregational, Punehowl
and Miller streets. Rev. A. V. Soares,
pastor, Kinau lane near Punehowl.
Morning service, 11; Sunday school,
2:30; evening service, 7:30; prayer
meeting, Wednesday, 7:30.

REORGANIZED CHURCH OF
JESUS CHRIST OF LATTER DAY
SAINTS, Millard hall, Millard street,
G. J. Waller, pastor, Waikiki beach.
Sunday school, 10; preaching in Ha-
waiian, 11; Book of Mormon class, 5:30;
Zion's Religion and Literary Society,
6:30; preaching in English, 7:30.
Sermon by Elder D. A. Anderson.

ROMAN CATHOLIC CATHEDRAL,
Fort and Beretania St. Rev. Albert
Boynemus, Bishop of Zeiguan, Catho-
lic Mission, Fort and Beretania streets.
Low masses, 6 and 7; Children's mass
with English sermon, 9; high mass
with sermon, 10:30; rosary with na-
tive instruction, 2; solemn vespers and
benediction, 7; week days, low mass, 6
and 7.

SACRED HEART CHURCH, Roman
Catholic, Punahou. Rev. Father Cle-
ment in charge.

ST. ANDREW'S CATHEDRAL, Pro-
testant Episcopal, entrance from Ema-
ma street near Beretania. Rt. Rev.
Henry Bond Restarick, Bishop of
the Missionary District of Honolulu;
Rev. Canon Alexander Mackintosh, 2033
Nuuanu avenue; Rev. Frank Fitz
Druma street near Beretania. Holy
Communion 7; Sunday school, 10;
Morning prayer, litany, and sermon 11;
pulpit abhail 2:50; evening prayer and
sermon 7:30.

ST. CLEMENT'S CHURCH, Protes-
tant Episcopal, Wilder avenue and Ma-
kiki street. Rev. John Osborne, Rector,
the Rector, Wilder avenue near Ma-
kiki street. Holy Communion 7; Sun-
day school 10; Morning prayer 11; evening
prayer 7:30. Holy Communion at
11 in the month. Rapid transit cars pass
the door.

ST. AUGUSTINE'S CHAPEL, Roman
Catholic, Waikiki Road near Kaplani
Park. Rev. Father Valentine in charge,
Catholic Mission, Mass with sermon,
8:30; Sunday school, rosary, 3.

ST. JOHN THE BAPTIST CHURCH,
Roman Catholic, Kaili-waena. Rev.
Father Clement, in charge, Catholic
mission.

ST. PETER'S CHAPEL, Chinese
Mission Ema near Beretania.
Morning prayer every Sunday at 11
a. m. Evening at 7:30 p. m. Wednes-
day, 7 p. m. Holy communion first Sun-
day of the month at 7 a. m. and on
third Sunday at 12 m. Sunday school
at 10 a. m.

YOUNG MEN'S CHRISTIAN ASSO-
CIATION, Hotel and Alakea streets.
Service at Oahu Prison, 11-12. At 4:30
in the Hall, song services with special
music. At 4:45 drop-in class for mem-
bers and strangers to study the con-
versations of Christ. At 5:30 a light
supper.

The Sunday afternoon study at the
Y. M. C. A., "round table" will be led
by Rev. J. Leadingsham. Song service
at 4:30, supper at 5:30.

BISHOP MEMORIAL CHAPEL, Ka-
mehameha Schools, Dr. W. B. Elkin,
chaplain. Morning service, 11. Alumni
and friends cordially invited.

WALTHAM WATCHES.

STEM WINDING, LEVER ESCAPEMENT.
THE BEST POCKET TIMEPIECES IN
THE WORLD.

MANUFACTURED AND GUARANTEED BY THE
AMERICAN WALTHAM WATCH COMPANY,
WALTHAM, MASS., U. S. A.

THE OLDEST WATCH FACTORY IN AMERICA AND THE LARGEST
IN THE WORLD.

FOR SALE BY RELIABLE WATCH DEALERS EVERYWHERE.

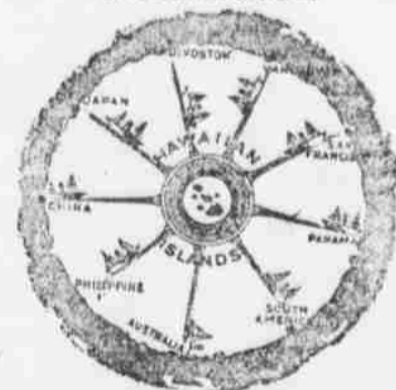
CLINTON J. HUTCHINS, INSURANCE

Life

Fire

Ax

Marine



McJERNY BLOCK, FORT STREET

Beginning November 28 for 4 Weeks, Grand Christmas Sale of

Dry Goods, Fancy Goods, Furnishing Goods, Boots and Shoes, Ladies' Underwear, Children's Toys and other goods, too numerous to mention.

CALL EARLY AND SECURE BARGAINS.

Goo Kim & Co., Dry and Fancy Goods...

Oriental Bazaar.

NEW STOCK OF CURIOS. A GREAT VARIETY SUITABLE FOR

Holiday Presents

CHINA WARE, SATSUMA AND
CLOISONNE WARES CARVED IVORY,
SANDAL WOOD BOXES,
EBONY FURNITURE, SILVER WARE.

Waity Building, King Street, opposite Advertiser Office.
Phone White 2746.

Kodaks....



Are
Christmas
Goods

Eastman Kodaks are always Up-to-date
Unless you get an Eastman Kodak you
won't be happy



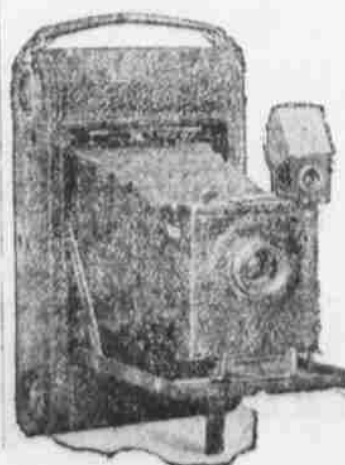
Don't think for a moment you cannot afford it. You can. Just
think, for \$1 you get a very good little instrument. For \$2 you get
one a little larger. And then \$5, \$10, \$12, \$17.50, \$25 and \$35 gives
you an idea of the different prices.

It is impossible to tell you about them in this space. Come into
the store and let them be shown to you. We are only too glad to have
opportunity of showing their good features and explain how to operate
them.

We have a Developing and Printing Department and turn out satis-
factory work. Every order, no matter how small, receives careful
treatment. Customers are good enough to say they like our work bet-
ter than that done by others. But let us demonstrate; we get your de-
veloping and printing by doing it a little better than anyone else.

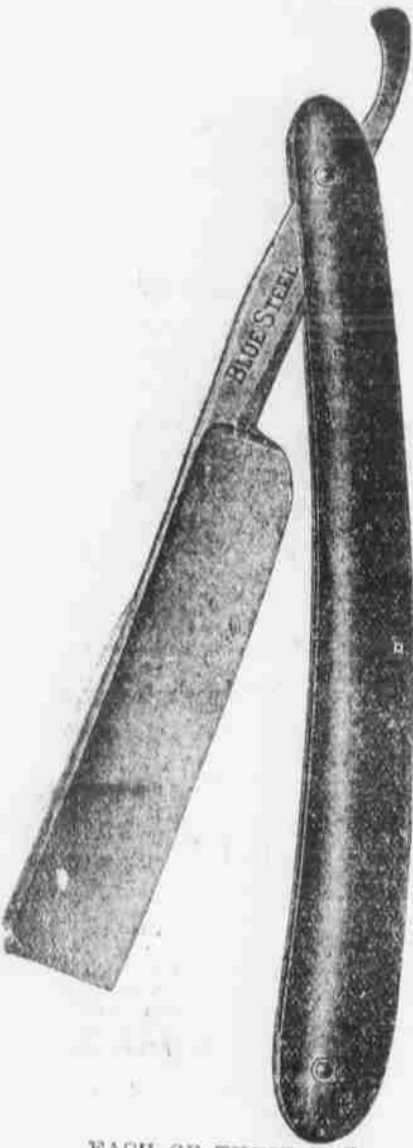
HOBRON DRUG CO.

Ehlers' Block, - Fort St.



L. C. ABLES
TELEPHONE MAIN 139
P. O. BOX 243.

August Kern
Genuine
STEEL RAZORS



EACH OF THESE RAZORS ARE TESTED AND THOSE NOT PERFECT ARE REJECTED. BESIDES WE GUARANTEE EVERY ONE WE SELL. SHOULD IT PROVE DEFECTIVE OR NOT HOLD ITS EDGES RETURN TO US AND IT WILL BE REPLACED.

PEARSON & POTTER CO., LIMITED

Phone Main 317.
Union and Hotel Streets.

NEW ADVERTISEMENTS

Whitney & Marsh.....Page 3
Santa Claus Headquarters.....Page 3
Probate Notice.....Page 3
E. W. Jordan & Co.....Page 4
W. H. E. Fisher.....Page 3
N. S. Sachs' Dry Goods Co.....Page 3
Chambers Drug Co.....Page 2
By Authority.....Page 3

NEWS IN A NUTSHELL

Paragraphs That Give Condensed News of the Day.

THE WEATHER.

Weather Bureau, Honolulu, 1 p. m.
Wind, moderate, southeast; weather clear. Morning minimum temperature, 70; midday maximum temperature, 79; barometer, 30.04, steady, (corrected for gravity); rainfall, 24 hours ending 9 a. m., .10; absolute moisture at 9 a. m., 61 grains per cubic foot; humidity, 91.4 per cent.
R. C. LYDECKER,
Territorial Meteorologist.

Trust plaques at Diamonds. Have you seen them?
Bids for the Armory will not be opened until the 21st.

This is the evening for the ball of the Catholic Benevolent Union at Progress hall.

A probate notice in the matter of the estate of H. F. Glad appears in this issue.

The ladies committee of the Chinese hospital meet today at 3 p. m. at 3 p. m.

The Kinau was sighted this morning at 8:20 o'clock twenty miles to the eastward.

Now is the time to get your supply of toys at E. W. Jordan & Co's alteration sale.

Invitations are being sent out for the inaugural ball to be held at the Capitol next Tuesday evening.

The Elks' Memorial service will be held at the Hawaiian Opera House tomorrow afternoon at 3 o'clock.

Miller's Malt Extract the best malt extract, 25 cents or \$2.50 a dozen at Chambers Drug Co, Fort and King.

There will be a meeting of the Catholic Ladies Aid Society at the convent at 3 o'clock this afternoon.

The wedding of Miss Matilda Walker and Mr. Constabel takes place this afternoon at 4 o'clock at the German Lutheran Church.

Samuel K. Pua, county clerk and recorder of the county of West Hawaii, took the oath of office yesterday before Chief Justice Preat.

W. G. Hyman will leave for San Francisco on the Alameda. He received a cable yesterday telling of the serious illness of his father.

The Board of Health offices were closed today by order of President Cooper, on account of the death of S. K. Kane a member of the board.

The ball of the Catholic Benevolent Union takes place this evening at Progress hall. The affair is given to raise a fund for charity purposes.

Rev. William Morris Kincaid continues his Sunday evening talks on his experiences and observations in the Holy Land. These talks are illustrated with stereoptican views.

The balance of the immense stock of Holiday goods for Sachs Dry Goods Co., arrived in the Alameda and is now being opened and placed on display. Watch for grand holiday announcement.

The Charity Rag Doll sale, for the benefit of the Free Kindergarten will take place at the Hawaiian Hotel on the 14th. Special entertainment will be provided for children, who will be admitted free.

On Friday December 11, at 10 o'clock Will E. Fisher will hold an auction sale of Ferns, Palms, Fruit and ornamental tree plants at the residence of Mrs. Henry Davis on Wilder avenue opposite Oahu College Campus.

Santa Claus Headquarters, at Thrum's store, prints an announcement on this page. The stock of dolls and general holiday goods is bigger and better than ever. The goods are well selected and the prices are right.

Whitney & Marsh are always abreast with the times. They show in their windows some handsome dress goods and hosiery. They are also making a splendid inside display of all seasonable goods. Whitney & Marsh will remain open this evening.

FOUR PRISONERS COME FROM HILO

TWO ARE BEING HELD FOR TRIAL AT THE FEBRUARY TERM IN JUDGE LITTLE'S COURT.

Four prisoners were brought to Honolulu today on the steamer Kinau. Two of them were Japanese. They were brought to jail to be held in answer for charges of conspiracy in the first degree. Their names were Fumio Koshi Tatsugoro and Watanabe Mamagi. They will be tried at the February term of the fourth circuit court. The other prisoners were a Porto Rican named Heccho Baldez-Moran and a Chinese named Lo Toon. Both were sent to serve sentences of 3 years each for assault with a dangerous weapon to commit murder. The Porto Rican committed the assault on a woman named Maria Cruz while the other man attacked another Chinese named Lee Unam. All of the prisoners were committed or sentenced from Judge Little's court.

DIVORCE GRANTED.

Judge De Bolt this morning signed a decree of divorce in the case of Kate Hattendorf vs. Henry Hattendorf, on the ground of failure to provide.

BRITISH CONSUL CALLS.

British Consul W. R. Hoare this morning made an official call on Governor Carter.

GARNISHEE DISCHARGED.

Judge De Bolt this morning discharged the garnishee in the case of H. W. Hyman against Sing Won defendant and W. A. Whiting garnishee. Judgment was given for plaintiff against the defendant. Whiting held a fire claim said to be the property of Sing Wan but the court held that as it was in the name of her husband, for her, Whiting could not be held at garnishee.

BORN.

THRUM—In Hilo, Hawaii, on December 1, 1901, to the wife of F. W. Thrum, a daughter.

AN OLD TIMER GONE.

Thomas C. Macpherson, an old resident of Hilo, died suddenly on Tuesday last at his home on Volcano street. Mr. Macpherson was born at Inverness, Scotland, about ninety years ago and had lived in the islands for more than thirty years. Twenty-six years ago he was in the employ of the Honolulu Iron Works, and about twenty years ago he was sent to Oakala where he worked in some connection with the cut that runs from the mill to the landing.—Hawaii Herald.

THE SANFORDS

The Sanford Company will repeat "The Pace That Kills" tonight at the Orpheum and judging from the manner in which the play caught on last night they should have a packed house. The play is full of comedy and exciting climaxes. A hot horse race is a feature and at one time there are no less than three horses on the stage. The players are all happily cast and give a very smooth and well balanced performance. The scenery is good and some very swell gowns are worn. On Monday and Tuesday nights the Sanford's give their farewell performances at which time they will give the thrilling drama "Northern Lights."

LAHAINA LOCALS.

The awa license was sold to a Chinaman for \$251 on Friday morning. The three masted schooner John G. North is discharging a large load of lumber.

The S. S. Doric sails at 8 o'clock tomorrow morning.

Star Want ads pay at once.

James F. Morgan,
AUCTIONEER AND BROKER
547-557 Kaahumanu St. Tel. Main 12.
P. O. Box 594.

HERE'S ANOTHER GOOD Holiday Sale

ON THURSDAY, DEC 10,
AT 10 O'CLOCK A. M.

At my salesroom, 547 Kaahumanu Street, I will sell at auction, an elegant assortment of FANCY GOODS imported for the Holiday Trade. The assortment comprises:
DECORATED VASES,
BRIC-A-BRAC, FINE STATUARY,
SWISS CARVED WOOD WARE,
BRONZE and METAL WARE,
and an unusual collection of fine goods suitable for the holidays.
Articles will be on view all day Wednesday, December 9th.

JAS. F. MORGAN,
AUCTIONEER.

Office Furniture AT AUCTION

ON TUESDAY, DEC 8,
AT 10 O'CLOCK A. M.

At my salesroom, 547 Kaahumanu Street, I will sell at Public Auction,
2 Koa Stand Desks,
2 Oak Stand Desks,
1 large Oak Roller Top Desk,
1 Flat Oak Office Desk,
1 Oak Typewriter Desk,
1 Smith Premier Typewriter,
6 Heavy Oak Office Chairs,
2 W. B. Wiltshire Safes,
1 Hall Safe,
1 Alpine Safe,
1 Rubber Tire Surrey in good condition. Goods now on view.

JAS. F. MORGAN,
AUCTIONEER.

FINE RUGS AT AUCTION

ON TUESDAY, DEC 8,
AT 10 O'CLOCK A. M.

At my salesroom, 547 Kaahumanu Street, I will sell at Public Auction, an invoice of
Fine Tapestry and Velvet Rugs,
Now on view.

JAS. F. MORGAN,
AUCTIONEER

Honolulu Iron Works,

STEAM ENGINES, SUGAR MILLS
BOILERS, COOLERS, IRON, BRASS
AND LEAD CASTINGS.

Machinery of Every Description Made to order. Particular attention paid to Ship's Blacksmithing. Job Work Executed on Short Notice.

Want ads in the Star bring quick results. Three lines three times for 25 cents.

ALEXANDER & BALDWIN, LTD.

OFFICERS.
H. P. BALDWIN.....President
J. B. CASTLE.....First Vice-President
W. M. ALEXANDER.....2d Vice-Pres't
J. P. COOKE.....Treasurer
W. O. SMITH.....Secretary
GEORGE R. CARTER.....Auditor

Sugar Factors and Commission Merchants

AGENTS FOR

Hawaiian Commercial and Sugar Company,
Hailu Sugar Company,
Pala Plantation Company,
Naiuku Sugar Company,
Kihel Plantation Company,
Hawaiian Sugar Company,
Kahului Railroad Company,

—AND—
The California and Oriental Steamship Company

Twenty-five cents pays for a Want ad in the Star. A bargain.

HAWAII

The Picturesque



New and revised edition, 70 FULL PAGE ILLUSTRATIONS with descriptive text.
The BEST BOOK on the HAWAIIAN ISLANDS ever published. Makes a beautiful gift to friends abroad.
The price—only \$1.25. Postage 25c extra.

WALL, NICHOLS CO., LTD.

Star Want ads pay at once.

Thrum's SANTA CLAUS Headquarters

IS NOW OPENED WITH ITS USUAL SUPPLY OF

Novelties and Good Things for the Season

CONSISTING IN PART OF
Hand-painted Island Scene Calendars at 75 cents.
Rump's finest Leather Goods in variety from Penwipers to Ladies' latest style Hand Bags or Medicine Cases. The assortment of ladies silver mounted Card Cases and Pocket Books cannot be equalled in town. Our window display and what our clerks will gladly show you will convince and satisfy you.
Gift Books from a dainty pocket edition in burnt leather of Lady of the Lake, Hiawatha, Lalla Rookh, Etc., to Standard Poets in many styles of binding, or leading books of the day, can be had at publishers' prices, and we ask your early inspection.
Children of all ages will be made happy at our splendid assortment of story books from Henty's books of fiction to object lessons, in linen.
We take just pride in our beautiful selection of Dolls from Germany, dressed and undressed from an inch to 25 inches in size.
SPECIAL CHRISTMAS STATIONERY.

Toys and Games to suit any child or parent and new at that, with prices within the reach of your pocket book.
To these and many other lines of desirable goods we simply ask your inspection. Open every evening till Christmas.

Thos. G. Thrum, Santa Claus' Headquarters,
1061 FORT STREET.

It is a mistake to say "that there is nothing new under the Sun as we are showing some things new in

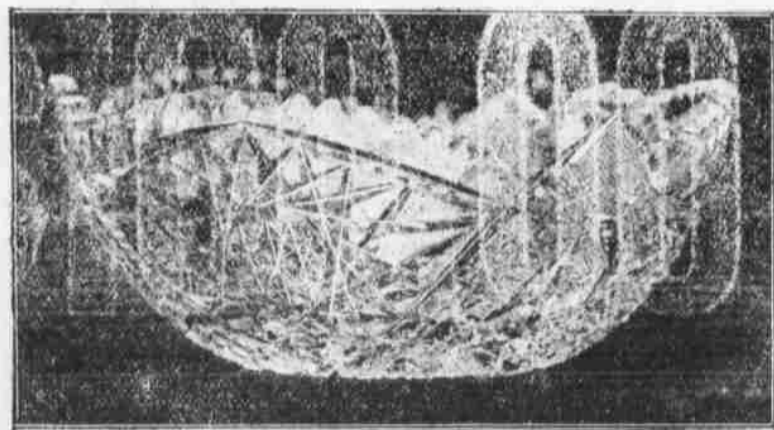
Dress Goods

In all grades from a nice dark 27-in. goods, in assorted plaids at 25 cents a yard to a Silk Viole, Aelvian, Etamine and Alpaca.

Hosiery

In Cotton, Lisle and Silk, in our usual variety of good values. These make a very acceptable Xmas gift.

Whitney & Marsh, Ltd



Cut : Glass : Bowl

8 in. for \$4.00

Former Price \$7.50

Through our Eastern buyers who were on the spot at the opportune moment, we made an advantageous purchase of CUT GLASS. This profitable deal we wish to share with our customers, and have therefore decided to sell an 8-inch Cut Glass Bowl (while they last) for \$4.00. This rich Cut Glass article which is ornamental as well as useful, is of standard make and will prove a choice Christmas gift.

Our holiday array is now ready and we invite your inspection. Nothing has been omitted or unattended, and our lines are uncomparably superior to what they were before.

We will take upon ourselves the responsibility of storing and keeping presents until delivery is desired. Purchases made early will insure better attention. Later in the season the rush will be too great. Dimond & Co. is known for its exactitude and thoroughness in handling Wedding and Christmas gifts.

Timely :- Purchase

FOR THE

Holiday Trade

Rich Cut Glass Bowl
For Little Money

W. W. Dimond & Co. Ltd

Dealers in Household Necessities