

# HAWAIIAN STAR

The Star Prints More Local News Than Any Other Paper In This City

TELEPHONE 365  
STAR  
BUSINESS OFFICE

STAR OFFICE  
NOW LOCATED AT  
MCGANDLESS BUILDING

VOL. XV.

HONOLULU, HAWAII, SATURDAY, AUGUST 31, 1907.

No. 4814

## SPRECKELS PROMISES STEAMERS

HEAD OF THE OCEANIC COMPANY SAYS FAST SERVICE WILL SOON BE BEGUN.

\*\*\*\*\*  
SAN FRANCISCO, Aug. 20.—“I can now state on the highest authority that an adequate subsidy will be voted when Congress meets in December toward the establishment of an American line of fast mail steamers from San Francisco to Australia, and the Oceanic Steamship Company will have its boats ready to start a new bi-weekly mail line immediately we can make suitable arrangements with the Australian Government.”—Statement of John D. Spreckels.

\*\*\*\*\*  
That one fast line of steamers at least will be running between Frisco and Australia in the near future is assured. Should the arrangements of the Union Steamship Company of New Zealand to run a twenty-knot service from Australia under a heavy Government subsidy, break down, which at present is not at all likely, the Oceanic Steamship Company is certain to have a line of fast steamers in commission running to Honolulu and Australia by about the end of the present year.

The question of running such a line of steamers has been much discussed by shipping and commercial men here and in Australia ever since the Ventura, Sonoma and Sierra were taken off. News received from Australian sources, and confirmed in advices from Honolulu, show that the question is a burning one among Australian political leaders, shipping and business men.

As a guarantee of its intentions in the matter the Australian Commonwealth Government, backed by four of the leading states, has made provision for a handsome subsidy to any company which will run and maintain a suitable line of steamers manned by white crews. It was the offer of this subsidy which brought the Union Steamship Company into the field.

John D. Spreckels yesterday said that it was the desire of the Oceanic Steamship Company to run a fast line of steamers between this port and Australia, and that as soon as suitable arrangements could be made, they would be running. One of the difficulties heretofore in the way was the short time the Australian Government proposed to allow its subsidy to run.

The former subsidy which the Oceanic Steamship Company derived from the United States Government was to last for ten years, and had still four years to run when steamers were withdrawn. The Australian subsidy ran for three years only.

“In the new appropriations, which Congress will make in December,” said Spreckels, “the terms are much better. The whole business has been watched by the company ever since the steamers were taken off. The three boats which were formerly running will all be in perfect order when the Alameda is repaired, and as soon as Congress authorizes the subsidy, and the company arranges suitable terms with the Australian Government, the boats will start to run. They will not, however, run, if suitable arrangements

## LIQUOR BOARD WINS FIRST ROUND

JUDGE DE BOLT GIVES A DECISION INDICATING THAT THE LICENSE COMMISSIONERS HAVE SWEEPING POWERS—ORDERS THE INJUNCTION IN THE CASE OF THE PALACE SALOON DISSOLVED. APPEAL TAKEN.

After hearing arguments on the motion to dissolve the temporary injunction issued several weeks ago restraining the Board of License Commissioners from taking steps for revoking the restaurant license of J. D. Moore proprietor of the Palace Cafe, and the attorney of Moore's attorney to the same Judge De Bolt this morning overruled the demurrer and sustained the motion thus freeing the license Board from all judicial restraint in dealing with Holt.

C. W. Ashford, who argued the case for restaurant properties, noted an appeal, and pending the ten days which he has to carry the case to the Supreme Court, the injunction still remains in force.

The case was argued for the Commission by E. C. Peters, who held that the matter was not one for interference from the courts.

C. W. Ashford argued that the board had shown that it was arbitrary and biased in its rulings, and inasmuch as the authority vested in it was so far reaching, an arbitrary decision against his client meant that there would be no redress.

In summing up the case and announcing his decision Circuit Judge J. T. De Bolt stated that the law provides for the revocation of licenses by the commission in case of the sole judges of what constitutes a violation; that the commission might not agree with a jury in what constituted a violation, but in all events it was up to the body, under the law. He also held that it would be unwarrantable authority for the court to assume to dictate the mode of procedure for the License Board, which was given authority to take its own course in such matters.

## MRS. STACKABLE GETS A DIVORCE

WIFE OF THE COLLECTOR OF CUSTOMS IS AWARDED DECREE AND ALIMONY.

Mrs. E. R. Stackable, wife of the collector of customs, was granted a divorce by Judge De Bolt yesterday afternoon, on the grounds of cruelty. The case was heard late yesterday afternoon. Mrs. Stackable was awarded \$4,000 alimony and the custody of the child.

The complaint set forth that the couple were married in August, 1897, and had one child. Mrs. Stackable charged that her husband had treated her cruelly, using violence and unjustly accusing her of harsh treatment of the child, and that he did not live with her and had stated that he never intended to do so again. On the witness stand she declared that upon one occasion he had struck her and knocked her down. There was no defense offered, and the judge promptly granted a decree.

R. W. Breckons appeared as counsel for Stackable and W. W. Thayer for Mrs. Stackable.

**CRAWFORD SAYS NOT.**  
Bill Crawford in answer to the question if he was a candidate for the job that was once held by Chester Doyle replied: “I wish to deny most emphatically that I have ever been a candidate for the position, and what is more I would not take the job at any price.”

**BEST IN QUALITY.**  
We have received another large shipment of Japan rice. This rice as can be attested to by almost every plantation laborer is the best imported to Honolulu. K. Yamamoto wholesaler Merchant, Hotel street.

## New Suitings

For the fall. Prices the lowest in the city

FAULTLESS CUTTING

Best of Workmanship

White Labor only employed in our Tailoring Department.

L. B. KERR & CO., Limited  
ALAKEA STREET.

## ASSAULT ON THE HIGH SEAS

WAIOLA IS GIVEN A HEARING BEFORE HATCH AND COMMITTED TO GRAND JURY.

Waiola, boatswain on the S. S. Maul, was committed to jail yesterday afternoon by U. S. Commissioner Hatch in default of \$1,000 bail for assault on the high seas.

Waiola is charged with having attacked and badly injured a new hand on the boat named Jack Kallianu while the Maul was some distance off the Oahu coast yesterday. According to the victim Waiola ordered him to go to and get his breakfast, but as Jack was new to the sea, he wasn't feeling like eating and so declined. On his second refusal, Waiola knocked him down and then tramped on his head with the result that he was badly battered up and may lose the sight of one eye.

Kallianu complained to the police on the arrival of the vessel here, but as the crime was committed outside of the local jurisdiction it was turned over to the United States authorities, and Marshal Hendry arrested the offender. When taken for a hearing before the Commissioner he was willing to plead guilty, and offered no explanation or excuse, nor denied anything that Kallianu told about the matter. He will be held to answer before the Federal criminal court.

## NO BIDDERS

At the auction sale today for the Manoa property of E. B. McClanahan the upset price was set at \$7800 and as there were no bids offered the property was withdrawn. A large number of people were present at the sale among them being W. H. Baird of Davies & Co., F. B. Steere of the Waterhouse Trust Co., P. H. Burnette, Attorney Olsen, Attorney Derby and a number of other people prominent in business circles.

**REMNANT SALE AT SACHS.**  
On Monday morning, September 2nd, the Sachs Dry Goods Co. begin their annual remnant sale. This will be one of the banner events of the year, as every remnant is marked at clearance prices.

The best cup of Hawaiian Coffee in the city. New England Bakery and Cafe.

**FOR A LAME BACK.**  
When you have pains in the small of the back, dampen a piece of thick flannel slightly with Chamberlain's Pain Balm and bind it on over the seat of pain, and quick relief will follow. For sale by all dealers, Benson, Smith & Co., agents for Hawaii.

**ARE YOU ROASTING?**  
The man at our fountain can cool you off and appease your appetite too. Alexander Young Cafe.

## “Man May Not Enter Here”



Fifty young women have abandoned man, wedded Art for a three year trial period and established a colony on Long Island where they will study and enjoy themselves with no male to mar the harmony. Miss Elizabeth Curtis, of Salt Lake City, is the president of the colony, while others are from various parts of the country. The colony will be known as “The Glades” and will have every living comfort and adjunct for the study of art while living in perfect freedom from any influence foreign or native.

## MANY MERCHANTS WERE NOT PRESENT

OBJECTIONS NOW TO THE ACTION TAKEN AT THE MEETING OF THE MERCHANTS' ASSOCIATION—ONLY TWELVE MEMBERS ACTED AND OTHERS DO NOT AGREE REGARDING THE SALINA CRUZ MATTER—THE COASTWISE LAWS.

There is talk among local merchants of a meeting to reconsider the merchants' Association action of yesterday afternoon with regard to the coastwise shipping regulations and more especially in connection with the change of schedule of Hawaiian-American steamers from Salina Cruz. It appears that there were only 12 of the hundred or more members at the meeting yesterday, and some of those present are kicking against action in such important matters by so small a party of men.

Those at the meeting were: President George W. Smith, E. H. Paris, Col. Soper, R. Catton, E. A. McInerney, James Wakefield, Fred L. Waldron, H. F. Wichman, E. H. Petrie, Fred Bush, B. F. Dillingham, E. A. Berndt.

It is said that several of the twelve did not agree in the Salina Cruz matter, voting at first against the resolutions which object to direct steamers from Salina Cruz. A plea for unanimity, however, brought them into line. It is claimed that at a larger meeting the final result would be different.

“The merchants ought to patronize the Oceanic and other steamship companies,” said a member, “and not the Hawaiian-American, which does not care about the general business anyhow. In any event the steamers from Salina Cruz are so infrequent that they are not worth considering.”

“As for the coastwise laws, I think it was very wrong of a mere dozen members of the Merchants' Association to get together and take important action, when the Chamber of Commerce has the matter under consideration and is awaiting answers from the steamer companies, to questions which ought to be answered before there is any action taken. Yesterday's resolutions should be recalled.”

President Morgan, when asked what he thought of the statement made by Secretary Paris of the Merchants' Association relative to a cable being sent by the Chamber of Commerce to the American-Hawaiian Steamship Company, replied: “I presume that the Advertiser published exactly what Mr. Paris said. In answer to this I would state that the Chamber of Commerce has not sent any cablegram, and that no cablegram has been authorized to be sent relative to this matter. The published account of the action of the trustees is correct as first reported by the representatives of the press, who were present at the entire meeting.”

Secretary Paris of the Merchants' Association said: “I do not nor have I ever presumed to criticize the Chamber of Commerce in speaking of the matter in the Association. I referred

to an article which appeared in the Advertiser stating that the Sugar Factors had sent a cablegram requesting the withdrawal of the steamers. I also stated that Mr. Morse of the American-Hawaiian Steamship Co. would probably act in conformity with the Sugar Factors' request. It has been said that some feeling was shown by the merchants criticizing the position taken by the sugar people. It is only due to the many persons who expressed themselves at this meeting, to say that the criticism was not confined to the Sugar Factors, but was also aimed at the American-Hawaiian Steamship Co., who evidently were acting without consulting many of the large shippers of freight into this port. It is simply the opinion of many of the merchants that a matter of so much importance affecting our freighting facilities should be given general consideration before any definite action should be taken.”

## BIG MEN WITH THE COMING TEAM

FIRST GAME HERE WITH COAST BASEBALL MEN AT END OF NOVEMBER.

In a letter addressed to Charley Falk, Joy states that the coast team will leave San Francisco on the Alameda, November 16, and will arrive here on Friday, November 22. The first game will be played on either Saturday or Sunday the 23rd or 24th, according to Jess Woods.

Joy in his letter states that Bill Lange, the greatest center fielder in the baseball world today, will come with the team, and also a number of the star players from the different Eastern League teams. Fisher is getting the best team together he can, and the chances are that the best baseball that has ever been seen here will be the order of the day.

**TO CALL SQUADRON TONIGHT.**  
Tonight the Naval wireless station will call up the Big Four, the squadron consisting of the West Virginia, Pennsylvania, Maryland and Colorado, due here Monday morning.

For prompt, accurate work, ring up Stenographer J. A. Combs, 885 Kaahumanu. Main 206.

Fine Job Printing, Star Office.

## AMERICANS' BIG STEAMSHIP ENTERPRISE

(Associated Press Cable to The Star.)  
NEW YORK, August 31.—The American-Manchurian Steamship Company has been organized here to give a fortnightly service to New York, Dalny, Port Arthur, Japan and the Philippines.

## MILLIONAIRE GLASS IN JAIL

SAN FRANCISCO, Cal., August 31.—Louis Glass, President of the Pacific States Telephone Company, convicted of bribery, remains in jail while awaiting sentence, the court having refused to admit him to bail.

## NEXT OF THE GRAFT CASES

SAN FRANCISCO, Cal., August 31.—The next graft trial will be that of Tiley L. Ford, Attorney for the United Railroads Company, and a former Attorney General of the State. He is indicted for bribery of supervisors.

## EUROPEANS LEAVE MOROCCO

PARIS, August 31.—Europeans in Morocco are preparing to seek places of safety.

## BAY COLIN WON

SHEEPSHEAD BAY, August 31.—Colin Keene's colt won the Futurity Handicap at Sheepshead Bay today. Bar None second Chapultepec third. Time, 1:11 1-5.

## APPOINTMENTS

OYSTER BAY, August 31.—President Roosevelt has appointed August E. Mentor, Collector of Internal Revenue in California; Edward F. Sweeney, Superintendent of the Mint, and William Cutter, Coiner.

**KAPAPALA EXTENSION.**  
The time for the sale of the leases on the big ranch tract of some 72,000 acres of government land at Kapapala, Kau, Island of Hawaii, which has been advertised for the 9th of September, has been extended until the 30th, thus giving three weeks more than expected. There was some talk of persons who would like to have put in a bid on the leases were prevented from so doing because of lack of time in which to get the situation in hand, as the property was advertised first for but a month. It is possible that this extension of time will give the opportunity desired.

**SIERRA MOVES TOMORROW.**  
O. S. S. Sierra, in quarantine, moves to the Oceanic wharf tomorrow morning at 6 o'clock to discharge cargo.

Delicious pies and cakes. Candy fresh every day. New England Bakery.

Fine Job Printing, Star Office.

## A MATTER OF HEALTH

# ROYAL



# BAKING POWDER

Absolutely Pure  
HAS NO SUBSTITUTE

A Cream of Tartar Powder, free from alum or phosphoric acid

ROYAL BAKING POWDER CO., NEW YORK.



Price, \$2.50

CORRECT SHAPES FOR SCHOOL BOYS.

A swell swing last, natty in appearance, strong and durable correct in style and shape. A better shoe for boys you can't find.

MANUFACTURERS' SHOE Company Limited. 1067 Fort Street.

## YOUR WIFE AS EXECUTOR

In the administration of an estate we act with another appointee if desired. For example, your wife can be made one of your executors, and as the other we would relieve her of the arduous part of the work and keep the estate clear of legal entanglements.

Consultation about it will cost you nothing.

Hawaiian Trust Co., Limited, Fort Street

# Oceanic Steamship Company.

## SIERRA-ALAMEDA SCHEDULE

ARRIVE HONOLULU.		LEAVE HONOLULU.	
S. S. SIERRA.....	AUG. 30	S. S. SIERRA.....	SEPT. 2
S. S. SIERRA.....	SEPT. 20	S. S. SIERRA.....	SEPT. 26
S. S. ALAMEDA.....	OCT. 11	S. S. ALAMEDA.....	OCT. 16

In connection with the sailing of the above steamers, the Agents are prepared to issue to intending passengers coupon through tickets by any railroad from San Francisco to all points in the United States, and from New York by steamship line to all European Ports.

**W. G. Irwin & Co.**  
(LIMITED).  
General Agents Oceanic S. S. Company.

# Canadian-Australian Royal Mail STEAMSHIP COMPANY

Steamers of the above line running in connection with the CANADIAN PACIFIC RAILWAY COMPANY between Vancouver, B. C., and Sydney, N. S. W., and calling at Victoria, B. C., Honolulu and Brisbane, Q.

LUM AT HONOLULU ON OR ABOUT THE DATES BELOW STATED, VIZ	
FOR AUSTRALIA.	FOR VANCOUVER.
MANUKA.....	AUGUST 24 AORANGI.....
AORANGI.....	SEPTEMBER 21 MOANA.....

CALLING AT SUVA, FIJI, ON BOTH UP AND DOWN VOYAGES.  
**THEO. H. DAVIES & CO., Ltd., Gen'l Agts.**

**American Hawaiian Steamship Company**  
FROM NEW YORK TO HONOLULU.  
Weekly Sailings via Tehuantepec.  
Freight received at all times at the Company's wharf, 41st Street, South Brook klyn.

FROM HONOLULU TO SAN FRANCISCO DIRECT.	FROM SEATTLE AND TACOMA TO HONOLULU.
S. S. NEVADAN.....	MISSOURI.....
TO SAIL SEPT. 17	On or about SEPT. 4

For further information apply to H. HACKFELD & CO., LTD., Agents, Honolulu. C. P. MORSE, General Freight Agent.

# MATSON NAVIGATION COMPANY,

The S. S. "HILONIAN" of this line, carrying passengers and freight, will run in a direct service between this port and San Francisco, sailing and arriving on or about the following dates:

Leave S. F.	Arrive Honolulu.	Leave Honolulu
AUG. 29TH.	SEPT. 5TH.	SEPT. 10TH.
SEPT. 26TH.	OCT. 3RD.	OCT. 8TH.
OCT. 24TH.	OCT. 31ST.	NOV. 5TH

Passenger Rates to San Francisco: First Cabin, \$60.00. Round Trip, First Class, \$110.00.

For Further Particulars Apply To  
**Castle & Cooke, Limited, Agents**

# Union Express Co.,

BRANCH HUSTACE PECK CO., LTD.  
63 Queen Street

Having baggage contracts with the following Steamship Co.'s Lines:  
OCEANIC STEAMSHIP CO.  
OCCIDENTAL & ORIENTAL STEAMSHIP CO.  
PACIFIC MAIL STEAMSHIP CO.  
TOYO KISEN KAISHA STEAMSHIP CO.

We check your outgoing baggage a your homes, saving you the trouble and annoyance of checking on the wharf.  
Incoming baggage checked on steamers of above companies and delivered with quickness and dispatch at your homes.

**Telephone Main 86**

# BUTTER AND CHEESE

We have cheese that has the flavor of the kind made on the old farm.  
And we have cheese "made in Germany." The new lot of butter just received carries with it the scent of the spring house, there is no getting away from it, the flavor is good.

**Metropolitan Meat Co., Ltd**  
Main 45

# GENT'S FURNISHING GOODS

We cater for the gents trade and in our store you will find the latest styles in hats, ties, shirts, collars, etc.  
JAPANESE GOODS such as silk pajamas, kimonos, cushion covers, always on hand.

**K. ISOSHIMA**  
King Street near Bethel. Honolulu.

# SHIPPING INTELLIGENCE

(For additional and later shipping see pages 5 or 8.)

## TIDES, SUN AND MOON

Last quarter of the moon Aug. 30th.

Date	High Tide	Low Tide	High Tide	Low Tide	Sun Rises	Sun Sets	Moon Rises	Moon Sets
Aug. 30	5:08 A.M.	1:14 P.M.	5:45 A.M.	1:33 P.M.	5:42 A.M.	6:20 P.M.	9:12 P.M.	10:22 P.M.
Aug. 31	6:18 A.M.	1:2 P.M.	6:32 A.M.	1:36 P.M.	5:42 A.M.	6:19 P.M.	9:49 P.M.	10:47 P.M.
Sept. 1	7:29 A.M.	1:2 P.M.	6:48 A.M.	1:38 P.M.	5:42 A.M.	6:19 P.M.	10:27 P.M.	11:14 P.M.
Sept. 2	8:37 A.M.	1:3 P.M.	7:18 A.M.	1:41 P.M.	5:42 A.M.	6:18 P.M.	11:14 P.M.	11:49 P.M.
Sept. 3	9:51 A.M.	1:4 P.M.	8:01 A.M.	1:51 P.M.	5:44 A.M.	6:17 P.M.	11:49 P.M.	12:24 P.M.
Sept. 4	11:03 A.M.	1:5 P.M.	8:45 A.M.	2:00 P.M.	5:48 A.M.	6:16 P.M.	12:24 P.M.	1:00 P.M.
Sept. 5	12:13 P.M.	1:6 P.M.	9:32 A.M.	2:08 P.M.	5:54 A.M.	6:15 P.M.	1:00 P.M.	1:36 P.M.

Times of the tide are taken from the U. S. Coast and Geodetic Survey tables. The tides at Kahului and Hilo occur about one hour earlier than at Honolulu. Hawaiian standard time is 10 hours 30 minutes slower than Greenwich time, being that of the meridian of 157 degrees 30 minutes. The time whistle blows at 1:30 p. m., which is the same as Greenwich, 9 hours, 9 minutes. The Sun and Moon are for local time for the whole group.

## U. S. DEPARTMENT OF AGRICULTURE-WEATHER BUREAU.

The following data, covering a period of 32 years, have been compiled from the Weather Bureau records at Honolulu, T. H. They are issued to show the conditions that have prevailed, during the month in question, for the above period of years, but must not be construed as a forecast of the weather conditions for the coming month.

Month, August for 32 years.  
TEMPERATURE. (1890-1906.)  
Mean or normal temperature, 73 deg.

The warmest month was that of 1900, with an average of 80 deg.  
The coldest month was that of 1894, with an average of 77 deg.  
The highest temperature was 88 deg. on Aug. 10, 11, 15, 1896; 4, 1897; 9, 1901.

The lowest temperature was 63 deg. on Aug. 23, 1894.

## PRECIPITATION (Rain) (1877-1894, 1905-07)

Average for the month, 1.50 inches.  
Average number of days with .01 of an inch or more, 14.  
The greatest monthly precipitation was 4.47 inches in 1888.  
The least monthly precipitation was 0.16 inches in 1884.  
The greatest amount of precipitation recorded in any 24 consecutive hours was 2.51 inches on Aug. 13, 1888.

## RELATIVE HUMIDITY.

Average 9 a. m., 68%; average 9 p. m., 72% (1893-1904).  
Average 8 a. m., 68%; average 8 p. m., 68% (1905-1906).

## CLOUDS AND WEATHER (1890-1906.)

Average number of clear days, 11; partly cloudy days, 18; cloudy days, 2.  
WIND.  
The prevailing winds are from the NE. (1875-1894, 1905-1906.)  
The average hourly velocity of the wind is 8.9 miles (1905-1906.)  
The highest velocity of the wind was 28 miles from the NE. on Aug. 27, 1905.

Station: Honolulu, T. H.  
Date of issue: June 29, 1907.  
\*9 o'clock averages from records of Territorial Meteorologist, 8 o'clock averages from Weather Bureau records.  
WM. B. STOCKMAN,  
Section Director, Weather Bureau.

## Shipping in Port

(Army and Navy).  
U. S. S. Cincinnati, Quimby, Yokohama, Aug. 28.  
U. S. S. Iroquois, Carter, Johnson Island, Aug. 30.  
(Merchant Marine).  
Steamships.  
Br. cableship Restorer, Combe, Esquimaux, March 31.  
Sr. S. S. Foxley, Milman, San Jose de Guatemala, in distress, Aug. 24.  
O. S. S. Sierra, Hondlette, San Francisco. (In quarantine), Aug. 30.  
Sailing vessels.  
Am. bgt. Galilee, Hayes, from Sitka, Aug. 28.  
Am. bk. R. P. Rithet, Drew, San Francisco, Aug. 29.  
Am. sc. Mary E. Foster, Johnson, Tacoma, Aug. 30.

## The Mails

OUTGOING.  
For San Fran., per Korea, Sept. 5.  
For Orient, per Asia, Sept. 2.  
For San Fran., per Sierra, Sept. 1.  
INCOMING.  
From Orient, per Korea, Sept. 5.  
From San Fran., per Asia, Sept. 2.  
U. S. A. TRANSPORTS.  
Thomas at San Fran.  
Logan left Hon., for Manila, Aug. 14.  
Buford left Hon., for Manila, Aug. 24.

PASSENGERS DEPARTED.  
Per S. S. Ko Au Hou, August 30, for Kauai: Secretary Mott-Smith, Colonel Spaulding, Governor Freat.  
Per S. S. Claudine, August 30, for Hawaii and Maui ports: H. Bethel, Charles Daniels, Miss Matheson, Mrs. G. P. Haven, J. M. Lydgate, W. V. Anderson, Miss Morrison, Miss Farley, R. L. Ogilvie, J. M. Vivas, W. A. Yates.

# SIERRA BRINGS CASE OF PLAGUE

ARRIVES WITH ONE OF HER COAL-PASSERS SUFFERING FROM THE DREADED DISEASE.

With a case of plague among the crew the Oceanic steamship Sierra, Captain Hondlette, arrived from San Francisco last evening, docking at the quarantine wharf about 6:15 o'clock, thus disappointing the usual large crowd which had gathered on the Oceanic and Fort street wharves to see the vessel dock at the former.

Dr. Sinclair boarded the vessel outside and discovered a suspicious case of sickness in one of the coal-passers. He believed it to be plague and so reported to Dr. Ramus, in charge of the Federal quarantine during the absence of Dr. Cofer. Dr. Ramus went aboard at once and found that it was indeed a case of plague. Sinclair had already ordered the Sierra to the quarantine wharf. She was ordered to remain in strict quarantine, except that her cabin passengers might be allowed to land after they had been examined to make sure that there were no cases of incipient plague among them. Extra thermometers were sent for and the temperature of every man, woman and child aboard ship was taken. No further cases of sickness were found. The steamer J. A. Cummins, which had arrived from the other side of the island with a load of sugar, was discharged in a hurry and put into service to bring the cabin passengers ashore. She landed the first lot of the 170 cabin passengers at the Oceanic wharf at 8:30 o'clock, over two hours after the Sierra had arrived and the rest of the cabin people were delivered ashore about 9:45. There were no accidents in the transfer of the passengers and this is worthy of note when the difficulties of the situation are considered. The gangway of the Sierra had to be placed in a very awkward position, touching the upper deck of the Cummins, and the steps stood with their edges up, the hand-ropes being too low, to add to the awkwardness, but the officers of the Sierra and the captain of the Cummins, Searle, did everything in their power to overcome the disadvantages of disembarkation. Chief Officer Koughan of the Sierra stood at the head of the gangway and assisted the passengers, relieving them of their hand-bags and passing it to members of the crew on the upper deck of the smaller vessel. One lady, Mrs. C. J. Ludwigen, after she had arrived on the Cummins' deck, dropped her satchel containing about \$5,000 in money and the value of jewelry and papers. It fell from the upper deck to the rail of the main deck and then found its way into the water where it was about to sink when Peter Kanau rescued it, not a moment too soon. This was the only misadventure of the transfer.

Some of the friends of those arriving found their way out to the Sierra's side aboard the Cummins, to hasten the welcome home. There was considerable anxiety manifested among the crowd ashore, for when they heard there was plague aboard exaggerated ideas of what might be the case served to alarm them. They thought perhaps there were several cases and each one imagined the possibility of his or her relative or friend being the victim of the disease.

The mail, the accumulation of six days, was landed about 8 o'clock by the tug Intrepid. Steerage passengers were left aboard to have their baggage and clothing fumigated and the order was passed that under no circumstances were any of the crew to be allowed ashore. Before the Sierra can move to her own wharf she must be fumigated and her 1,400 tons of miscellaneous freight must also undergo fumigation.

The Sierra was expected early yesterday morning. She was delayed by rough weather and a foul bottom, having been lying idle at San Francisco since her last trip to this port. For two trips she is taking the place of the Alameda which is being generally overhauled at San Francisco.

Captain Searle of the Cummins is to be complimented on the manner in which he handled his boat alongside the Sierra under great difficulties and the attention he paid the passengers was the most careful. The Sierra's purser, the popular Buckham, materially assisted in the handling of passengers on the gangway, taking women and children down the dangerous gangway.

There has been a great deal of plague in San Francisco of late and the quarantine authorities here are prepared to use every precaution to guard this port from infection.

NOT A DOUBTFUL QUESTION.  
There is no doubt in the minds of those who have used Chamberlain's Colic, Cholera and Diarrhoea Remedy as to its curative powers. For a pain in the stomach, diarrhoea or dysentery, it affords immediate relief. For sale by all dealers, Benson, Smith & Co., agents for Hawaii.

"KIKKO-TEN,"  
Best Soy



Packed in New and Large Tubs

30 Quart Bottles to a Tub

The attention of Plantation Managers is called to this brand of Soy. Years of experience have brought it to the front and it now ranks as the best Soy in the market.

**K. YAMAMOTO**  
SOLE AGENT.  
25 Hotel Street near Nuuanu. Telephone Main 399.

We have an Expert  
IN  
GAS RANGES

There shouldn't be anything the matter with yours but if there is ring us up. We will be pleased to send him to you.

**HONOLULU GAS COMPANY,**  
BISHOP STREET.

Beer Is a Tonic

A pure brew of malt and hops is one of the best tonics known.

**PRIMO BEER**

is absolutely pure and made by the most improved scientific process of the best ingredients.



If the beef in one store was as good as that in another, we would not do as much business as our books show.

DELICIOUS CHOPS,  
FINE BOILING PIECES,  
PRIME ROAST BEEF, and  
TENDER TEA BONE STEAKS

always at your command, properly cut and promptly delivered to your residence. Also fish.

**C. Q. YEE HOP & CO.**  
NEXT THE FISHMARKET.  
TELEPHONE 251.

**STAR**  
Printing :- Office

For years the Star's printing office has been a busy place. We have gained a reputation for doing good work at fair prices and delivering the job when promised. Few printing offices can make a similar claim. With addition to our plant we are in a better position than ever to handle commercial printing. Our three Linotypes are at your service for book and brief work. If you are not a Star customer, send us a trial order; you will be pleased with the result.

**Star Printing Office**  
McCandless Building. Telephone 365

### The Best Soda

THAT'S WHAT WE HAVE. WE TAKE PAINS IN THE PREPARATION OF THE SYRUPS AND WE USE UNUSUAL CARE IN THE SELECTION OF MATERIALS FROM WHICH OUR ICE CREAM IS MADE. COME TRY.

**HONOLULU DRUG COMPANY.**

Fort Street, below King.

### Wall, Nichols Co., Ltd

GENERAL STATIONERS, MUSICAL AND SPORTING GOODS.

61 to 71 King Street, Honolulu.

### Fire Insurance!

Atlas Assurance Company of London. New York Underwriters Agency. Providence Washington Insurance Company.

THE B. F. DILLINGHAM CO., LIMITED General Agents for Hawaii. Fourth Floor Stangenwald Building.

### W. G. Irwin & Co.

AGENTS FOR THE Royal Insurance Co. of Liverpool, Eng. Scottish Union & National Ins. Co. of Edinburgh, Scotland. Wilmelma of Madgeburg General Insurance Company. Commercial Union Assurance Co. of London.

### T. SHIMA

THE DYER. CLOTHES DYED AND CLEANED. All Work Guaranteed. Suits Cleaned and Pressed, 50c.; Tuxedo, \$750. No. 1350 Fort Street, near Orpheum Theater, Honolulu, T. H.

### Y. WO SING CO.

GROCERIES, FRUITS, VEGETABLES, ETC. California Butter, 40c. lb.; Cooking Butter, 30c. lb.; Island Butter, 35c. lb. 1185-1188 Nuuanu Street. Telephone Main 238. Box 952.

### GOMES' EXPRESS CO

Furniture Moved With Care to All Parts of the City OFFICE: 715 FORT STREET. Near Queen, opp. Hackfeld Building.

### CONSOLIDATED SODA WATER WORKS COMPANY, LTD.

Sole manufacturers and Agents of Genuine Kola Mint. (Don't buy poor imitations.) PHONE MAIN 7L

### C. BREWER & CO. LTD.

QUEEN STREET. HONOLULU, H. I.

### AGENTS FOR

Hawaiian Agricultural Company, Onomea Sugar Company, Honoumuli Sugar Company, Waiuku Sugar Company, Ooakala Sugar Plantation Company, Pepeekeo Sugar Co., Kapapala Ranch, Charles M. Cooke, President. Geo. H. Robertson, V. Pres. & Mgr. E. Faxon Bishop, Treas. & Secy. F. W. Macfarlane, Auditor. P. C. Jones, Dir. or C. H. Cooke, Director. J. R. Galt, Director. All of the above named constitute the Board of Directors.

### ALEXANDER & BALDWIN, LTD

J. P. COOKE, MANAGER.

### OFFICERS:

H. P. Baldwin, President. J. B. Castle, 1st Vice-President. W. M. Alexander, 2nd Vice-President. L. T. Peck, 3rd Vice-President. J. Waterhouse, Treasurer. E. E. Paxton, Secretary. W. O. Smith, Director.

### Sugar Factors and Commission Merchants

AGENTS FOR Hawaiian Commercial & Sugar Company.

Haiuku Sugar Company, Pala Plantation, Maui Agricultural Company, Kihel Plantation Company, Hawaiian Sugar Company, Kahuku Plantation Company, Kahului Railroad Company, Haleakala Ranch Company, Honolulu Ranch.

OF INTEREST TO

## Women and Others

### AN EXCELLENT HOUSEWIFE.

HE was a most excellent housewife. For so all the neighbors declared. Her windows were polished and shining. Each fly was expelled or ensnared. From cellar to attic no cobwebs. Were found in that 'spic-and-span' house.

In pantry and cupboard and kitchen. There wasn't a crumb for a mouse. She was up in the morning at day-break. This model of cleanness and care; Her aprons were brightest of gingham. And smooth was each strand of her hair; Her mind with each definite brain cell. Was set like the lines of her house. Of impulse for comfort or pleasure. There wasn't a crumb for a mouse.

She was a most excellent housewife. But her children went trembling to bed. Lest they mar the prim grace of the dresser. Or wrinkle the snowy white spread. Her husband, a poor, helpless creature. Came ruefully home to the house. Where of love or domestic enjoyment. There wasn't a crumb for a mouse. —Lalla Mitchell, in What to Eat.

MARK TWAIN, said a Chicagoan, "crossed the Atlantic with me on the Minneapolis last month, and his conversation made the captain's table very gay.

"The ladies continually encircled the humorist, and the last night on board he proposed a toast in their honor.

"The ladies," he said, raising his glass and bowing. "The ladies—second only to the press in the dissemination of news."

### STYLE VS. BEAUTY.

WHAT is human beauty? Why is it that what we are pleased to call "style" is dissociated from it? Were it not that the Greeks have left us a standard, the open-minded modern inquirer must feel hopelessly bewildered if attempting to find one today. We constantly hear exclamations of approval as to the form, or especially the figure, of a woman who to Praxiteles or Phidias must have seemed a monster. The aim of the modern woman seems to be to distort nature to the extent, if need be, of even risking the displacement of her most vital organs. If one stops before the window of a shop where medical and surgical supplies are sold in order to examine an anatomical chart of the human body reproducing the complicated and important machinery that nature has packed within us to serve its wise purpose, and upon turning away she comes upon a fashionably attired girl with the wasplike waist that today constitutes "a beautiful figure," one cannot help wondering where all those internal organs—apparently so necessary to her well-being—have been crowded. Woman has substituted "style" to beauty; and style is a mere local, ephemeral convention.

To our sophisticated eyes, however, the modern girl is lovely in her stylish garb, with the stiff dignity that her well-strapped stays impose upon her. Moreover, she seems to be fairly healthful, strangely enough. Common sense and artistic taste make us revert to the fine old Greek types of womanly beauty. Is this compressed girl as charming as the Aphrodite of Praxiteles? Will she ever, as a matron, approach in grace the Aphrodite of Melos? Then, why, if we have a standard founded upon idealized nature, does woman inflict upon herself discomfort that sometimes must amount to torture, in order to depart from that standard? And, stranger still, why is she generally admired in the doing? Is the old French nursery dictum: "Il faut souffrir pour etre belle"—that cruel fallacy by which poor little girls have been tricked into acquiescence in their own undoing in all ages and in all parts of the world—founded upon something innate in the human mind that associates success with painful processes? It would seem to be so, for this desire to "improve" upon nature at the cost of suffering is widespread. It is found not only among such progressive people as our own Western civilized populations, where, with true democratic spirit, it is shared with the masses, but among less democratic or progressive races, where, usually, it remains—as in the case of the distorted feet of the Chinese lady—a privilege of the aristocracy.

### Reliable Tailors

We are the only skill manufacturers of Ladies, Gentlemen's and Children's Underwear. Mosquito Netting and Stylish Holokos made to your wishes. HOP WO, 1121 Nuuanu Street. Fine Job Printing, Star Office.

## BLOOD RULES HERE AS IN ENGLAND

ARISTOCRATIC TENDENCIES IN AMERICA REVEALED BY ADMIRAL BRIDGE.

LONDON, August 31.—There there is as blue blood in America as in England that the American is essentially aristocratic, that there is a strong patrician feeling in the United States and that the destinies of England and America are inevitably inseparable, are the principal points in a remarkable treatise in preparation by Admiral Sir Cyprian Bridge.

The Admiral, who has long been a profound student and admirer of American civilization, discussed these points yesterday in the course of a protracted interview. He said: "I was always impressed with the vast extent to which essentially British ideas have permeated America. This is apparent in every element of your life, from laws to breakfasts. Your family and church life, literature, methods of trade, and conception of honor, are all British and not Continental.

"Then a careful study of your political life shows that over 80 per cent of the public men in America have British names—English, Scotch or Irish. All your President's save Van Buren and Roosevelt have British cognomens. The same applies to the Supreme court bench and other courts, to Governors, Congressmen and Senators.

"This is especially remarkable when it is considered that there has been no great British emigration to the United States from other nations. Moreover, I do not believe that the British stock in America is exceptionally prolific yet, despite the millions of emigrants from other lands, with their millions of offspring, the original British element has supplied the governing class which today dominates the nation.

"Further, a survey of the first families in America furnishes a rich array of names drawn from the nobility and gentry of the fifteenth and sixteenth centuries—the Calverts, Wintrops, Edcotts, Fairfaxes, Bradfords and Washingtons. These are only a few but they show what I mean. No nobler blood flows in England. When persons here speak of the 'Yankee parvenu' they hardly know what they are talking about.

"Even if descended from a younger son who had been in trade, this is no sign of inferior birth. The dead of the collateral branch of one of the oldest families in England was a village cooper. That was not considered a disgrace in the seventeenth century, when so many of these gentle craftsmen sought fortunes in the Colonies. "I believe that this powerful element in America will eventually form or has already formed a patriciate such as once dominated Rome. The modern American is one of the most aristocratic persons one can find anywhere. The wealthy, well-born citizen of the United States is far more unapproachable by his inferiors than the aristocrat of any other land.

"This is especially true of New England, but the same applies more and more to every part of the country. As this patriciate, which secures a stronger and stronger hold on the country's destinies, is especially British, the hold of this country on America is bound to maintain a relation of ever-increasing strength and intimacy. This may be due to no special desire, to no special goodwill. The countries simply can't help themselves.

The new Chinese minister is said to be a fine tennis player. He should have no trouble of "catching on" to the diplomatic racket in this country. —Washington Herald.

Henry James' new novel, "The Prevaricators," make no reference to Harman and other railroad men who have had that title thrust upon them. —Omaha Bee.

earth's surface, and other such unusual methods of treatment, and from the row he kicked up between the legislature and the Board of Health over the proposition to allow him to practice on the patients at the settlement, is again brought into the lime light through his refusal to pay his lawyers who kept him out of jail.

Thompson and Clemens are the attorneys in question, and they filed a suit against Wallach yesterday afternoon in the Circuit Court for the sums of \$350, \$25 and \$3. All of this money the plaintiffs claim is due them for services and for money advanced for various things in the proceedings to keep their client from being sent to jail on conviction of perjury.

When Thompson and Clemens came into Wallach's case, he had been convicted of perjury in regard to his place of residence when registering for the privilege of voting. Within a few hours of the time he would have had to go to jail, after some hard work, his attorneys obtained a writ of error in his case and a retrial, at which he was acquitted.

Now it is said that "Doctor" refuses to pay for all this.

Fine Job Printing, Star Office.

## WORLD'S NEWS BY CABLE

SAN FRANCISCO, August 31.—Louis Glass, president of the Pacific States Telephone Company, was found guilty of bribing officials, the verdict of the jury being arrived at on the first ballot. He had been taken to jail to await sentence.

Louis Glass is one of those implicated in the scandals recently unearthed in San Francisco, his share of the affair having been to bribe the members of the Board of Supervisors for the purpose of securing special privileges for his company. This was his second trial, the jury in the first trial having failed to arrive at a verdict.

Vice President Zimmer of the same company is now serving a three months' sentence for contempt of court, having refused to give evidence against Glass at the first trial.

MUTINEER HANGED. ODESSA, August 31.—Matushenko, the leader of the Potemkin mutiny, was hanged yesterday.

The mutiny of the Russian sailors of the Khas Potemkin occurred while that battleship was in the Black Sea in July, 1905. The crew rose against their officers, killed the captain and some others, sailed to Odessa and bombarded the city.

VESUVIUS AGAIN ACTIVE. NAPLES, August 31.—Mount Vesuvius is again active.

CHOLERA AT SHANGHAI. SHANGHAI, August 31.—The Cholera outbreak in the Oriental quarter here is spreading. Up to yesterday two hundred deaths from the disease have been reported.

ST. PAUL'S IN DANGER. LONDON, August 31.—Leading architects who have been studying the conditions of St. Paul's Cathedral declare that the great building is in danger unless masonry braces are built around the walls.

The conditions of the foundation

upon which the great edifice designed by Sir Christopher Wren is built have altered of late years, due, the scientists think, to the drying up of the ground through the installation of the sewerage system and drainage systems of the city. The cathedral was built in 1675. It is 500 feet in length and the breadth at the transepts is 250 feet and of the choir and nave 225 feet. The great dome rises to a height of 365 feet.

SEIZED JAP POACHER. WASHINGTON, August 31.—The Japanese schooner Nitto has been seized for sealing off the Alaskan coast. She was afterwards released.

BORN. RICE—in this city, August 30, 1907, to the wife of James Rice, a daughter.

In a communication dated Camp Wellman, Spitzbergen, August 2, printed in the Record-Herald, Walter Wellman, leader of the Wellman-Chicago Record-Herald polar expedition, says:

### HUDNUT'S FLOWER - FRAGRANCE

The season when the fragrance of the flowers is most desired in the boudoir. We have the substitute for the blossoms, having just received a fresh supply of PERFUMES and TOILET PREPARATIONS made by Hudnut.

TOILET WATERS, PERFUMES, TOILET CREAM, OLIVE OIL SOAP, SACHET POWDERS, FACE POWDERS, TOILET POWDERS, TOOTH POWDERS, MANICURE SUPPLIES.

Ask for the DuBarry \$3.00 Sachet. We recommend these preparations for their Purity and Richness of Quality.

### BENSON, SMITH & CO., LIMITED.

Hotel and Fort Streets

## BURKE & JAMES Photographic Goods

We have just received a complete stock and it is now unpacked ready for sale. Come in and see the new CENTURY cameras. They embody more improvements than any other plate camera made.

### Hawaii Photo & Art Co.

FORT STREET, BELOW KING.

# HOT

AN ELECTRIC FAN WILL KEEP YOU COOL.

SOLD BY Hawaiian Electric Co., Ltd. King Street near Alakea Phone Main 300



### THE SMITH-PREMIER

Represents the highest point of attainment in typewriter manufacture. All the latest actual improvements are embodied in this machine. An automatic ribbon fastener and a Ribbon Feed are original with the Smith. A tri-color ribbon may be used. Sold by

HAWAIIAN NEWS CO., Ltd.

# The Hawaiian Star

DAILY AND SEMI-WEEKLY.

Published every afternoon (except Sunday) by the Hawaiian Star Newspaper Association, Limited.

### SUBSCRIPTION RATES:

Local, per annum ..... \$8.00  
Foreign, per annum ..... 12.00  
Payable in advance.

Entered at Post Office at Honolulu, Hawaii, as second class mail matter.

Subscribers who do not get their papers regularly will confer a favor by notifying the Star Office; Telephone 365.

The Supreme Court of the Territory of Hawaii has declared both THE HAWAIIAN STAR (daily) and THE SEMI-WEEKLY STAR newspapers of general circulation through out the Territory of Hawaii, "suitable for advertising proceedings, orders, judgments and decrees entered or rendered in the Courts of the Territory of Hawaii."

Letters to THE HAWAIIAN STAR should not be addressed to any individual connected with the office, but simply to THE HAWAIIAN STAR, or to the Editorial or Business Departments, according to tenor or purpose.

FRANK L. HOOGS ..... MANAGER

SATURDAY ..... AUGUST 31, 1907

## All After Men Higher Up

American financial conditions of the present appear to be without precedent. Henry Clews and company's last banking circular says that within the year there has been a shrinkage of three billion dollars in values on the New York Stock Exchange, and this circular, issued by a leading banking firm of the country, joins in the sentiment that the way to restore confidence is to send corporation men who violate law to jail, not to impose big fines. Clew says: "That such a tremendous shrinkage in a little over seven months could take place on the New York Stock Exchange without bringing on panic and universal disaster is almost beyond belief, and had any prophet the foresight or the courage to have predicted such results last December, he would have been treated as a subject fit for the asylum. Nevertheless, the fact remains true, that Wall Street has endured a shrinkage in values far exceeding that of any panic on record, and this without any serious failures thus far. The fact that these losses have endured without disaster is remarkable testimony of strength in the financial situation. Losses have fallen upon those best able to bear them, and the causes are now beginning to be clearly understood. General excesses, such as the over-extension of credit, over-issue of securities and over-confidence have been the main and the natural reasons for recent reaction. Of course with the market in a hyper-sensitive condition, investors and speculators alike are naturally more or less frightened at the anti-corporation crusade. There have been some rather indiscreet official utterances concerning the Government's policy in prosecuting corporations; and the anti-railroad feeling displayed in many of the States is naturally disturbing at this time. Nothing, however, that the Administration could have said or done at this time could have checked the recent downward movement. Liquidation from natural causes was inevitable. It has been predicted in these advices for months past as the only means of righting the money and security markets. Whether the cure is complete or not remains to be seen. It is doubtful if liquidation has yet run its full course, and if not, still lower prices must be anticipated; although we may have a fair temporary recovery.

"The remedy for corporation law breakers is punishment by imprisonment of the guilty individuals connected therewith. If the Government and State officials will announce this as their future policy, confidence will at once return to the stock market and securities be in demand for investment. Corporations whose officials are found guilty should also be taxed for all legal fees and court expenses. Big money fines fall mostly upon innocent stockholders who have had nothing whatever to do with the wrong acts, hence big fines as a penalty depreciate values as they threaten confiscation, while imprisonment in place thereof will advance them, as it puts them on a more reliable and honest basis."

## Decrease In Our Chinese

According to figures given out in San Francisco by Secretary Straus and published elsewhere in today's Star, the Chinese population of Hawaii has decreased enormously since the census of 1900. Just where the secretary got his figures from he does not state, but in addition to what he might learn here he undoubtedly has at his disposal departmental records which would aid in making estimates. He gives the total of Chinese here now as 9,000, whereas it was nearly 26,000 when the census of 1900 was taken. To those here it seems hardly that the decrease has been so large, though it has undoubtedly been considerable. Straus' figures indicate a decrease in the total population of the islands. He totals about 141,000 people. Allowing a few thousand for races he does not mention, this would not give us the 154,000 we had in 1900. Straus' figures are also somewhat unexpected as to the Japanese, whom he finds not to have increased. The figures he gives do not agree with what our school census indicates, either as to the total population or as to the Japanese, who seem to have greatly increased in numbers, judging by the school census.

## Taft Favors Revision

Secretary Taft's prominence as a candidate for President makes his opening campaign address one of special importance. He was very emphatic for tariff revision, and more regulation of corporations. After speaking for stricter railroad laws and against government ownership of railroads, the secretary said: "Mr. Bryan asks me what I would do with the trusts. I answer that I would restrain unlawful trusts with all the efficiency of injunctive process, and would punish with all the severity of criminal prosecution every attempt on the part of aggregated capital through the illegal means I have described to suppress competition.

"I come now to the question of the tariff, its revision, and its relation to the unlawful trusts. The Dingley tariff was adopted immediately after the election of Mr. McKinley. Since that time we have passed through the Spanish war and have had a decade of prosperity and an increase and expansion of trade unexampled in the history of this or any other country. The Republican principle of the protective tariff is, as I understand it, that through the customs revenue law a tariff should be collected on all imported products that compete with American products, which will at least equal a difference in the cost of production in this country and abroad, and that proper allowance should be made in this difference for the reasonable profits to the American manufacturer.

"I had occasion in a speech which I delivered at Bath, Me., now about a year ago, to express my individual opinion as in favor of an immediate revision of the tariff. What has happened in the last year has only served to confirm the view I then expressed, and it now seems to me that even most of the extremists in the matter of the tariff are of

## WAS PRESIDENT OF OAHU COLLEGE

### AMASA PRATT DIES IN COLUMBUS, OHIO, AFTER ILLNESS OF TEN DAYS.

The Columbus, Ohio, State Journal of August 9, prints the following: After an illness of 10 days, which it had not been thought was serious, Amasa Pratt died at 4 o'clock yesterday afternoon at his home, 433 East Town street, from valvular heart trouble. He was in bed reading a newspaper, and his wife left the room for a few minutes, to return and find him dead.

Mr. Pratt was 65 years old. He was connected with the Central Ohio Paper Company. His health had been good, and he had said that in the last ten years he lost only five days because of illness. Three weeks ago, he went away for a week's vacation at the home of his son, Llewellyn E. Pratt, in Coshocton. While there he took a 30-mile horseback ride. After returning from his vacation, he was about to resume his duties when he was taken ill.

His daughter, Miss Edna S. Pratt, is spending her vacation at Lynn, Mass. She was unaware her father was ill. A telegram to summon her home was sent last evening.

Mr. Pratt was born in Essex, Conn. He served in the Connecticut regiment during the civil war. A younger soldier-brother was killed. Mr. Pratt was a student at Williams college, and he lost a year because of his military service. He was graduated in the class of '65. Last winter he was elected president of the Williams College Alumni Association of Central Ohio.

After graduation, he went to Philadelphia and was an instructor under Dr. Peet at an institution for the deaf and dumb. Afterward, he went to California to be instructor in a like institution. He was one of five brothers, all of whom were graduates of Williams College and engaged in work connected with the education of the deaf and dumb.

Mr. Pratt married Ann Louise Bowen in Oakland, Cal., in 1870. She survives. From California he went to Honolulu, where for nine years he was president of Oahu College. He came to Columbus in 1883, and for nine years was superintendent of the State Institution for the Deaf and Dumb. For a time he was connected with the Columbus Latin school, after which he took a position with the Central Ohio Paper Company.

Ever since he came to Columbus he had been a member of the First Congregational church, of which Rev. Dr. Washington Gladden is pastor. He was at various times superintendent of the Sunday school and deacon of the church. He was once president of the Columbus Y. M. C. A. He was frequently called upon in churches to interpret for the deaf and dumb.

Besides the widow, the son in Coshocton and his daughter, he left a son, Selden M. Pratt. He also left two brothers, Rev. Dr. Llewellyn Pratt of Norwich, Conn., and Abram N. Pratt of Carlsbad, N. M., and a sister, Miss Jennie L. Pratt, also of Carlsbad. She was for many years engaged in mission work among the Indians of the Southwest.

In all probability the funeral will be held tomorrow. The burial will be private.

### CENTRAL UNION CHURCH.

Rev. Charles R. Hyde will preach both morning and evening.

11 a. m. subject: "The Pre-eminence of Christ." Mrs. Hare will sing a solo.

7:30 p. m. subject: "The Influence of True Religion Upon the Family" the second sermon in the series. Mrs. Mackall will sing a solo.

6:30 p. m. Christian Endeavor meeting subject: "I Can and I Can't." Leader Miss Gertrude Hall.

9:45 a. m. Bible School. A cordial invitation is extended to the public to attend these services.

the opinion that it would be not only unwise, but unsafe, for the party to fall, in its next national platform to pledge itself to a revision of the tariff as soon after the next Presidential election as possible. Those of us who favor immediate revision can well afford to wait until after the next Presidential election in order to secure substantial acquiescence by all Republicans."

The passengers on the Atlantic liner Lusitania were recently treated to one of the most remarkable mirages on record. For quite a long time they saw in the skies a very clear reflection of another liner which was far beyond their horizon. The view was described by many as so clear that with the aid of glasses officers could be seen on the bridge of the far-off vessel. The possibility of seeing a squadron so far off as the cruisers on the way here were Thursday morning is debatable. The commonest form of mirage at sea, however, is the elevation of objects from below the horizon. Add the elevation of Kaimuki, and it makes possible a mirage of objects a long way off.

## BATHING CAPS

A new idea is the Alpha "Kerchief" Cap which combines effective hair protection with attractive appearance.

The cap is made of pure Para rubber attached to which is a pretty scarf of water-proofed material. Scarfs in a variety of colors; can be tied in many different ways.

NEAT, TASTY, BECOMING.

PRICE \$1.50

Then we have the pure Para rubber bathing caps and macintosh caps in the usual styles.

### HOLLISTER DRUG CO.

ESTABLISHED 1879.

### STEINWAY

SPARR AND OTHER PIANOS.  
THAYER PIANO CO.  
156 Hotel St., Opp. Young Hotel.  
Phone Main 218.  
TUNING GUARANTEED.

### EL PALENCIA

The Choice of the Smoker.  
Hayselden Tobacco Co.  
SOLE DISTRIBUTORS.  
Alexander Young Building.

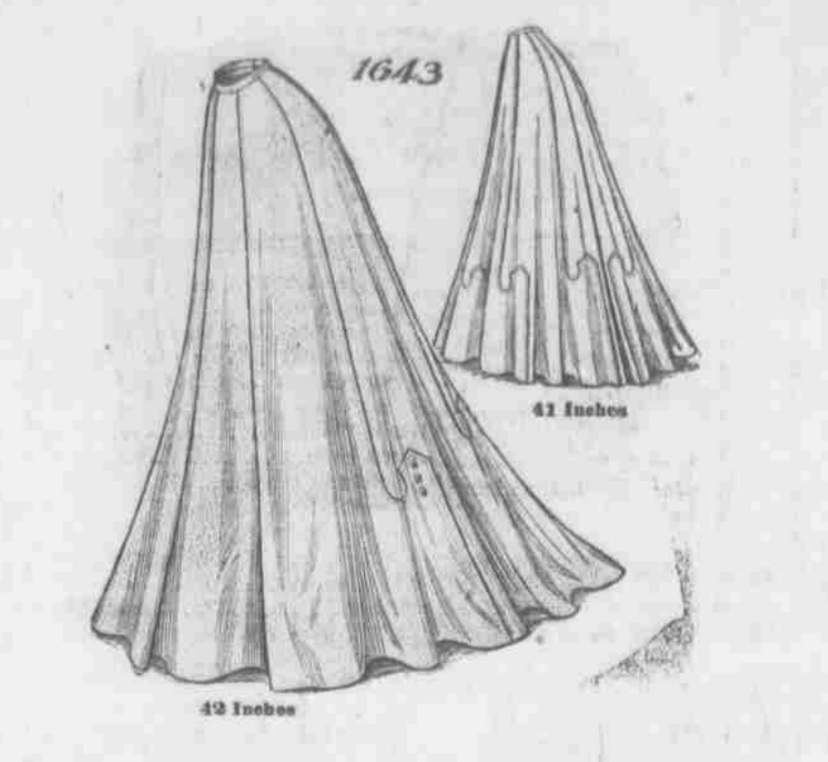
### NEW OAHU CARRIAGE MANUFACTURING CO.

Any kind of repair work on carriages. Horse shoe.  
No. 117, River street, Honolulu.

### Catton, Neill & Co. LIMITED

Engineers, Machinists, Blacksmiths and Boiler-makers.  
First class work at reasonable rates.

## ONE OF McCALLS PATTERNS



### LADIES' LINEN EMBROIDERED HANDKERCHIEFS

FROM 20c. EACH UP. VERY GOOD VALUE.  
NO TWO ALIKE  
BIRTHDAY AND CHRISTMAS PRESENTS.

## For One Week From To-day AT E. W. Jordan & Co. LIMITED.

### HAPPY ARE THE HOUSEWIVES WHO USE THE LEONARD CLEANABLE Refrigerator

No dissatisfaction ever arises. There is nothing to be dissatisfied about. The food is always nice and sweet. And there is no trouble in cleaning a Leonard—none at all. That's why it's called "Cleanable." It's very easy to demonstrate these facts. Won't you give us a call? If you decide the "Leonard Way," you'll have refrigerator satisfaction throughout all your life. An important item.

### H. Hackfeld & Co., Ltd

HARDWARE DEPARTMENT.

## MONOPOLE CHAMPAGNE (RED TOP)

The perfection of a Champagne that you don't feel next morning. OLD GOVERNMENT PLANTATION CIGARS. An Elegant Smoke. All Light Colors.  
Telephone 240. 169 King Street.

## LEWIS & CO., LTD.

DEALERS IN WINES, LIQUORS AND CIGARS.  
Telephone Main 240. 169 King Street.

### SHEU LUN

MERCHANT TAILOR.  
Suits Made to Order.  
Best Linen Duck and Silk Fongee.  
All Suits in the Latest Style.  
1008 Nuuanu, near King, P. O. Box 947.

### Y. ISHII,

Corner Beretania and Nuuanu Sts.  
JAPANESE DRUGGISTS  
GENERAL MERCHANDISE  
All Kinds of American Patent Medicines at Low Prices.  
Won Loui & Co. Plumbers and Tinner's

### SUPPLIES

ALL KINDS  
Cash Register  
Typewriter  
Mimeograph and  
Globe Wernicke  
CARD SYSTEMS

### Hawaiian Office Specialty COMPANY

931 Fort Street : Tel. Main 144  
MATTRESSES  
J. HOPP & CO.  
LEWERS & COOKE BUILDING  
King Street.

### R. COLLINS,

Hand-made Harness and Saddlery. Full line of all Horse Goods. Repairs to Harness, Saddles, Trunks, Suit Cases and Bags.  
ALL WORK CALLED FOR AND DELIVERED.  
82 King Street, near Fort—Tel. Main 427

## THEY HAVE COME!

Those 1907 Model Hammerless, Treble Bolted

## ITHACA SHOT GUNS

They range in price from \$25.00 to \$200.00.

If you are looking for something real nice in the shot gun line, call and see this lot.

We sell guns on the installment plan, which makes it easy for you to shoot a good one.

### E. O. HALL & SON, LTD

Fort and King Sts.

## OPTICIANS

Our Optical Department is Fully Equipped for Refracting and Manufacturing. Difficult Prescription Work Receives Special Attention at Our Hands. A Large Stock of FIELD AND OPERA GLASSES OF THE HIGHEST GRADE.

### H. F. Wichman & Co., LTD.

LEADING JEWELERS.

Cable Address: "Armitage," Honolulu. Lieber Code.  
Postoffice Box 683. Telephone Main 101.

### HARRY ARMITAGE

Stock and Bond Broker.  
MEMBER OF HONOLULU STOCK AND BOND EXCHANGE.  
Office: Campbell Block, Merchant Street. HONOLULU, T. H.

Leading Grocers  
Are  
HENRY MAY & CO., LTD.  
Phones 22.

## Clearance Sale

— O F —  
Gloves, Belts, Neckwear, Etc.  
— N E X T —  
Tuesday, September 3rd  
8 O'CLQCK.

SEE OUR WINDOW DISPLAY.

	Were	Sale
GLOVES.		
Egyptian Suede Lisle Gloves.....	90c.	60c. pr.
White Saja Glace Kid Gloves.....	\$1.00	50c. "
White La Blanche Kid Gloves.....	1.75	\$1.00 "
1 Lot Assorted Kid Gloves.....		50c. "
1 Lot Assorted Kid Gloves.....		\$1.00 "
1 Lot Assorted Mitts, Black.....		25c. "
1 Lot Assorted Silk and Lisle Gloves.....		25c. "
BELTS.		
Black Silk Belts.....	35c.	15c.
White Kid Belts.....	35c.	15c.
Black Leather Belts.....	50c.	20c.
Colored Leather Belts.....	75c.	25c.
White Kid Belts.....	75c.	25c.
Plaid Silk Belts.....	35c.	15c.
Colored Silk Belts.....	75c.	25c.
White Silk Belts.....	\$1.25	50c.
NECKWEAR.		
Turnover Collars.....	12 1/2c. 4 for	25c.
do.....	25c.	15c.
do.....	35c.	20c.
do.....	75c.	40c.
Pique Stocks.....	75c.	40c.
HOSE.		
Children's Colored Lace Hose.....	Per Pair,	12 1/2c.

### EHLERS

Whose Sales ARE Sales

**BEST FIVE CENT CIGAR**



**MYRTLE CIGAR STORE** Agents for  
**FITZPATRICK BROS. Hawaii**

**HUSTACE-PECK CO., LTD.**

**— DRAYMEN —**

Phone 295. 63 Queen Street. P. O. Box 212.

ESTIMATES GIVEN ON ALL KINDS OF TEAMING

DEALERS IN

FIRE WOOD, STOVE, STEAM AND BLACKSMITH COAL

Crushed Rock, Black and White Sand,  
Garden Soil.

HAY, GRAIN, CEMENT, ETC., ETC.

**Greatest PREMIUMS**

**Ever Offered To the Public**

The FUJI PHOTO GALLERY will give 500 Prizes to Patrons.

The Premiums will be on exhibition at Hotel Street corner Union above old Coyne Furniture Store.

**Honolulu House Cleaning Co.**

HOUSES THOROUGHLY CLEANED. LAWNS TAKEN CARE OF AND GARDENS ATTENDED TO.

Beretania and Smith Streets.

TELEPHONE 144.

**Shur-On Eye-glasses**  
**A. N. Sanford**  
GRADUATE OPTICIAN  
Boston Building—Fort St.  
Shur-On Eye-glasses

**For a Sweet Tooth**

try the Alexander Young Cane Candies. Made fresh every day by expert candy makers and altogether the best candies sold in this city.

**"Enuf Said"**

**ALEXANDER YOUNG CAFE**

Corner Hotel and Bishop Sts.

**HER GIFT.**

The method a young woman passenger on the Cunard Line steamship Carmania, employed to squelch a "masher" on board attracted other women on the boat who had been annoyed by the man's attentions.

At the young woman paraded the promenade deck yesterday afternoon along marched the man, and again he smiled at her. Watched by twosome passengers she walked up to him and held out her hand as though meaning him to take something. What fell was a lemon. The head steward had furnished it gladly, on request.

**MILLIONAIRES JOINING SCHMITZ**

GRIM RESULTS OF GRAFT PROSECUTIONS IN BOTH STATE AND FEDERAL COURTS AT SAN FRANCISCO—MILLIONAIRE GLASS IS CONVICTED IN ONE COURT AND MILLIONAIRE PERRIN IN ANOTHER—BENSON AND ZIMMER TOO.

SAN FRANCISCO, August 26.—Millionaire Edward B. Perrin and Land Agent John A. Benson are convicted in the United States District Court yesterday a jury returned their verdict finding both men guilty of the crime of conspiring to defraud the Federal Government of its forest lands. And now these aged men, both in the decline of life, await the sentence of the court, a sentence that may mean that the remainder of their lives shall be spent behind the walls of a penitentiary.

In the conviction of Dr. Edward B. Perrin the Government authorities have brought to justice the wealthiest, the most prominent and the most influential man, who, up to the present time, has been involved in the land frauds in this state. By the conviction of John A. Benson the Federal prosecutors have secured their first verdict against a notorious land-grabber, who for two decades managed to escape conviction on numerous charges growing out of his land operations.

Both defendants sat with eager, expectant faces as the jury filed into Judge De Haven's court last evening. Both confidently expected acquittal. The jurors took their seats. The foreman handed a paper to the Judge. The Judge passed it down to the clerk and the clerk read:

"We find the defendants E. B. Perrin and John A. Benson guilty as charged in the indictment."

A tense moment followed, a moment of palpating silence. Both defendants sat with bowed heads, stunned, stricken. The white hair of Dr. Perrin seemed to grow whiter. He sat immovable and inconsolable. Benson first recovered from the blow. He lifted his head and gazed at the Judge in a fixed, unseeing stare.

Judge De Haven announced that he would pronounce sentence on Thursday at 10 o'clock. United States District Attorney Robert T. Devlin announced that he would not ask that the defendants be committed to the custody of the Marshal, as they were under sufficient bonds. Judge De Haven

corner of whatever degree may do or say.

The masque ball which will be given at the Seaside on next Tuesday night should be liberally supported. It is given for the purpose of assisting in defraying the heavy expense of sending a polo team to represent the Territory in the great Western Championship tournament to be held on the Coast next winter. Inasmuch as the good it will do Hawaii from the point of view of the Promotion Committee will be very great, there should be every encouragement given to the movement, for publicity on the mainland is what we want.

At the same time the affair will be a social event of more than usual importance, and there is no question but that it will be a most enjoyable affair. In all probability the "Big Four" cruiser fleet will have arrived here by that time and the naval officers who are sure to take a conspicuous part will enhance the pleasure of the occasion. Manager Church, of the Seaside Hotel deserves the thanks of all for his generosity in donating the use of his pleasant resort free and without condition.

Mrs. Nicholas Longworth's at home cards which have been issued are for next Wednesday afternoon from 5 to 7 o'clock. The reception will be held in the Walkiki cottage which the Longworths have occupied during their stay in Honolulu. About two hundred invitations have been sent out.

Dr. and Mrs. Whitney of Honolulu are staying with Mr. and Mrs. W. S. Terry, at their mountain home on Hawaii.

H. R. Macfarlane and Miss A. Macfarlane arrived home on Thursday from Maui where they have been for some time.

Prof. M. M. Scott and family arrived home this week from a visit to Hawaii.

As a contribution towards the Hawaii yacht fund Manager Ellis of the Ellis Quintet Club has tendered the services of the club without cost to the yacht committee for whatever they may be called upon to do.

Tax Assessor J. L. Holt and Mrs. Holt have returned from Kona, where they have been spending vacation.

Principal and Mrs. Perley L. Horne of the Kamehameha Schools returned Thursday morning from a vacation trip to Maui.

Henry R. Macfarlane returned Thursday, from a round trip on the

not make the order.

Then John A. Benson rose from his chair. He was alone, not even his attorney being at his side. The old verdict finding both men guilty of the crime of conspiring to defraud the Federal Government of its forest lands. And now these aged men, both in the decline of life, await the sentence of the court, a sentence that may mean that the remainder of their lives shall be spent behind the walls of a penitentiary.

This confession is very likely to save him from again going to jail for contempt of Judge Lawlor, but it undoubtedly will force him to resign from his clubs and accept the social penalties that go with the confession of crimes.

On the first trial of Glass, when Zimmerman three times declined to answer questions put to him, he distinctly said that the matters on which he was questioned did not involve him in any danger of being prosecuted for a felony. But yesterday he shifted flatly around, and said that he answered the questions propounded those answers might tend to convict him of a crime. When Judge Lawlor informed him that a criminal intent on his part was necessary to constitute a crime, he sat silent and by his silence said that his crime had been committed with such a criminal intent.

R. P. Rihet, while in California he visited all the central portion of the State.

**METHODIST CHURCH.**

Sunday services are as follows:  
Sunday school 9:45 a. m.  
Public Worship, 11 a. m.  
Rev. W. D. Westervelt will preach.  
Epworth League 6:30 p. m.  
Evening Worship 7:30 p. m.  
Rev. E. B. Turner will preach. Miss Gertrude Hall will sing both morning and evening.

The public is cordially invited to attend these services.

Len Choy the florist is the only place to get choice flowers of all descriptions, asters, daisies, roses, etc., in bouquets or bushes.

C. Q. Yee Hop will close at 10 a. m. Monday September 2nd, 1907 (Labor Day) Customers are requested to send in their orders early. Only one delivery.

Fine Job Printing, Star Office.

**CLOSING NOTICE.**

The Metropolitan Meat Market will close Monday (Labor Day) Sept. 2nd, 1907, at 10 o'clock. Only one delivery. Customers are requested to send their orders early.

**Expert Dental Parlors**

ARE NOW LOCATED AT

Corner of Fort and Hotel Streets  
Upstairs.

Formerly occupied by LYONS' BOOK STORE.

**For Vancouver**

The S. S. Indiana sailing on or about September 2nd 1907, Graham master, will have room for about 77 first class passengers for Vancouver and Victoria B. C.

Fares of passage \$60. Apply at office of Hind, Rolph & Co., Campbell Block corner Fort and Merchant streets.

**A Bicyclist Recommends Pe-ru-na.**

He says: "I have been a bicyclist for over five years. Last spring I caught cold causing catarrh. I took Peruna, and am well. I often recommend Peruna to my friends."

Many Athletes Praise Pe-ru-na. Builds Up Worn-Out Systems.



MR. JOHN PERRAULT.

Mr. John Perrault, 335 Davidson street, Boulevard St. Paul, near Montpelier, Canada, writes: "I have been a bicyclist for over five years, and last spring I caught cold and did not take anything for it, for I thought it was not bad enough, but it came to catarrh. I was so discouraged that I didn't know what to do. I could not sleep; I always felt tired and troubled. Finally I began to take Peruna. After I had taken one bottle I felt better. I took another one, and now I am well. I would like to always feel as I do to-day. I often recommend Peruna to my friends."

**Close Confinement.** Mr. G. W. Woodbury, Rogers, Ohio, formerly Captain and Center of the Uiram College Basketball Team, writes: "There are times in the life of every student when excessive study and too close confinement and attention to the object in view will tell on your health. I have found that when body and mind alike are weary and refuse to work a few doses of Peruna restores lost strength and invigorates one quicker and more permanently than anything I know. It gives one nerves of iron and muscles of steel, and assists the mental activities together with the physical to a wonderful degree. The athlete knows the importance of being in fine form. Peruna is a valuable assistant to anyone who wishes to keep himself in vigorous health every day."

Ask your druggist for a copy of our booklet, "The Ills of Life," giving instruction covering the most effective use of Peruna. Peruna is for sale by all chemists and druggists. The following wholesale druggists will supply the retail trade in Honolulu, Hawaii: Benson, Smith & Co., Honolulu Drug Co., and Hobron Drug Co.

**NEW ADVERTISEMENTS**

IN THE CIRCUIT COURT OF THE First Circuit, Territory of Hawaii.—At Chambers.

John Wright, v. Cecil Brown, Administrator of the Estate of Elizabeth Wright, deceased, intestate; John Hoskins, Jane Franklin and Susan Howard.—Chamber Summons.

The Territory of Hawaii: To the High Sheriff of the Territory of Hawaii, or his Deputy; the Sheriff of the County of Oahu, or his Deputy: You are Commanded to summon Cecil Brown, Administrator of the Estate of Elizabeth Wright, deceased, intestate; John Hoskins, Jane Franklin and Susan Howard, to appear ten days after service hereof, if they reside in the County of Oahu, otherwise twenty days after service, before such Judge of the Circuit Court of the First Circuit as shall be sitting at Chambers in the Court Room at Honolulu, T. H., to answer the annexed Bill of Complaint, of John Wright. And have you then there this Writ with full return of your proceedings thereon.

Witness the Honorable J. T. De Bolt, First Judge of the Circuit Court of the First Circuit, at Honolulu, T. H., this 23rd day of August, 1907. (SEAL) J. A. THOMPSON, Clerk.

Section 1769 Revised Laws. The time within which an act is to be done shall be computed by excluding the first day and including the last. If the last day is Sunday, it shall be excluded.

Attest: A true copy. L. P. SCOTT, Clerk. 4th—Aug. 31, Sept. 30, Oct. 31, Nov. 30.

**BY AUTHORITY**

NOTICE OF SALE OF GENERAL LEASES OF AGRICULTURAL AND PASTORAL LAND IN KAU, HAWAII.

At 12 o'clock noon, Monday, September 30, 1907, at the front entrance of the Judiciary Building, Honolulu, there will be sold at public auction under provisions of Part V, Land Act 1895, (Section 278-285 inclusive, Revised Laws of Hawaii) General Leases of the following described lands:

- (1) 344.0 acres more or less of the land of Waialua, Kau, Hawaii, to be used for pastoral purposes. Term of lease, twenty-one years from September 30, 1907. Upset rental, \$70.00 per annum, payable semi-annually in advance.
- (2) 72,850.0 acres, more or less, of the land of Kapapala, Kau, Hawaii,

to be used for pastoral purposes. Term of lease, twenty-one years from July 1, 1908. Upset rental, \$3500.00 per annum, payable semi-annually in advance. All of the above lease will contain provisions regarding fencing of boundaries and protection of abutting forest reserves.

The government reserves the right to resume possession at any time or such portion or portions of the above described lands as may be required for public purposes or for settlement purposes, under Sections 4 and 7, Land Act 1895.

- (3) 635.0 acres, more or less, of agricultural land, together with 108.5 acres, more or less, of the pastoral land of Kapapala, Kau, Hawaii. Term of lease, five years from July 1, 1908. Upset rental \$1950.00 per annum, payable semi-annually in advance.
- (4) 575.0 acres, more or less, agricultural land, together with 328.0 acres more or less, of the pastoral land of Mohokea, Kau, Hawaii. Term of lease, five years from June 4, 1908. Upset rental, \$2050.00 per annum, payable semi-annually in advance.

The latter two leases will contain provisions regarding fencing of boundaries and protection of abutting forest reserves, and will also reserve to the government, the right to resume possession at any time or such portion or portions as may be required for public purposes or for settlement purposes, under Sections 4 and 7, Land Act 1895.

For plans and full particulars regarding reservation, fencing, etc., apply at the office of the undersigned at the Judiciary Building, Honolulu. JAS. W. PRATT, Commissioner of Public Lands. Honolulu, August 9, 1907. 4th—Aug 10, 17, 24, 31, Sep. 7, 14, 21, 28.

**CONSTRUCTING MAKIKI SLOPES, OAHU ROAD.**

Proposals will be received at the office of the Superintendent of Public Works, Honolulu, T. H., until 12 o'clock m. of September 10th, 1907, for constructing the Makiki Slopes, Oahu Road, a road connecting with the present Tantalus Road from Makiki Valley.

Plans, specifications, and blank forms of proposal may be obtained at the office of the Superintendent of Public Works, for which a deposit of \$5.00 is required which sum will be refunded intending bidders after they have returned the plans and specifications. Proposals will not be accepted unless submitted on the blank forms furnished, enclosed with a certified bank check for Five Hundred (\$500.00) Dollars in a sealed envelope endorsed "Proposal for Constructing Makiki



REAL ESTATE DEPARTMENT.

FOR SALE. Young Street. Modern five-room cottage, stables, etc. Lot 50x135. \$2700.

Beretania St. Modern six-room cottage with two-room cottage on premises. \$2400.

Fort Street. Three cottages renting for \$18 per month. \$2500.

Kapapala St. Five-room cottage in good condition. \$1200.

BUILDING LOTS: College Hill, Kaimuki, Makiki, Panahou Districts, cash or installment.

FOR RENT. Beretania Street. \$25.00.

Beretania St. cor. Victoria. 35.00.

Walkiki Beach. 40.00.

Beretania Street. 40.00.

Pennacola Street. 20.00.

Lunalilo Street. 20.00.

Matlock Avenue. 25.00.

Wilder Avenue. 35.00.

FURNISHED. King Street. \$40.00.

Kinau Street. 35.00.

Henry Waterhouse Trust Co., Ltd. Real Estate Department. Fort and Merchant Sts., Honolulu.

**Classified Advertising**

LOST. Bunch of keys, Wednesday. Tag on ring. \$2 reward for return to this office.

FOUND. Bunch of keys in McCandless Building. Owner can have same by calling on Jonathan Shaw, Room 205 McCandless Building and paying for this ad.

A new Phone Number 1110 at Annie Kearns' Jam Factory. Also Fresh Chutney and Jam.

WANTED. Boy with bicycle to carry papers. Apply Star Business Office.

Try the William Penn and the Ada lina Patti the king and queen of Havana cigars.

A compositor. Apply at Star Office.

For Sale. Remington Typewriter, Standard No. 7. Almost new, in first-class condition. Apply to Mutual Telephone Co., Alakoa street.

If you are looking for a good 5c cigar try the Doctor or The Roughriders at the Myrtle Cigar Store or Fitzpatrick Bros.

Slopes, Oahu Road, and delivered previous to 12 o'clock m. of the day specified at the office of the Superintendent of Public Works who reserves the right to reject any and all bids.

C. S. HOLLOWAY, Superintendent of Public Works. Honolulu, T. H., Aug. 28, 1907.

NOTICE OF SALE OF GENERAL LEASES OF AGRICULTURAL LANDS AT WAIANAE AND

At 12 o'clock noon, Monday, September 30, 1907, at the front entrance of the Judiciary Building, Honolulu, there will be sold at public auction under the provisions of Part V, Land Act 1895, (Sections 278-285 inclusive, Revised Laws of Hawaii), General Leases of the following described lands:

- (1) 157.43 acres of agricultural land and 862.0 acres a little more or less of waste and pastoral lands at Waianae, Oahu.

Terms of lease, five years from July 1, 1908.

Upset rental, \$1,500.00 per annum, payable semi-annually in advance.

(2) 2.63 acres of agricultural land at Ewa, Oahu.

Term of lease, five years from January 5, 1908.

Upset rental, \$41.00 per annum, payable semi-annually in advance.

The Government reserves the right to resume possession at any time or such portion or portions of the above described lands as may be required for public purposes or for settlement purposes, under Sections 4 or 7, Land Act 1895.

For plans, descriptions and full particulars, apply at the office of the undersigned, Judiciary Building, Honolulu.

JAS. W. PRATT, Commissioner of Public Lands. Honolulu, Oahu, Territory of Hawaii, August 30, 1907. 5th—Aug. 31, Sept. 7, 14, 21, 28.

**TAKE A HOLIDAY.**

Go to Haleiwa on Labor Day and rest yourself or play golf. The Haleiwa limited will leave Honolulu at 8:22 in the morning and get back at 10:10 at night. Excursion rates will prevail from all points on the railroad that day. St. Clair Biddood, Manager.

Are you easily tired? Is your work a burden? Do you often feel weak and faint? Is your appetite poor? Are you easily discouraged? If so, your nervous system is weakened, your blood is impure, and serious illness is not far away.

# AYER'S Sarsaparilla

was made for just such cases. When the blood is impure the whole nervous system becomes poisoned. It is impossible to throw off that terrible feeling of depression, and there is no ambition to work. Ayer's Sarsaparilla will purify, vitalize, and enrich your blood, and life will again be worth living.

As now made, Ayer's Sarsaparilla contains no alcohol. There are many imitation Sarsaparillas. Be sure you get "Ayer's."

# GOOD VARNISH

depends upon good materials and "know how" in making. Those made by :

STANDARD VARNISH CO., CHICAGO VARNISH CO., and S. C. JOHNSON & SON,

contain the best ingredients known and will not crack nor become sticky. Try them for interior house furnishing, floors and cabinets.

SOLD BY LEWERS & COOKE LIMITED 177 S. KING ST.

# 68 HOURS To Chicago

From San Francisco. The Fastest transcontinental train.

# Overland Limited

Electric lighted, Buffet, Library and Drawing room compartment, observation car, with diner. Telegraphic news posted on train.

# Southern Pacific

# W.G. Irwin & Co., Ltd

Wm. G. Irwin, President and Manager John D. Spreckels, First Vice-President W. M. Giffard, Second Vice-President H. M. Whitney, Treasurer Richard Ivers, Secretary W. F. Wilson, Auditor

# SUGAR FACTORS, COMMISSION AGENTS

AGENTS FOR C. canic Steamship Co., San Francisco, Cal. Western Sugar Refining Co., San Francisco, Cal. Baldwin Locomotive Works, Philadelphia, Pa. Newall Universal Mill Co., Manufacturers of National Cane Shredder, New York, N. Y. Pacific Oil Transportation Co., San Francisco, Cal.

Fine Job Printing, Star Office.

# SOCIAL EVENTS OF THE WEEK

## New Charity Work By The Duchess Of Marlborough



DUCHESS OF MARLBOROUGH.

The Honolulu Symphony Society "smoker-concert" last night at the Ki-lohanna Art League hall was a success unqualified from a musical point of view. The attendance was also very good. But just where the "smoker" part of the affair came in was not so apparent. Probably it was during an intermission when most of the musicians went out and perhaps indulged in a cigarette or two. After the program had been rendered the audience was invited into the parlor and library of the League and served with light refreshments.

Honolulu should be justly proud of its symphony society. Its work, being a labor of love, is not accomplished with any hope of material profit, but solely because of the pleasure which its members can give themselves and their friends in the development of their talent. It is safe to say that there are few places anywhere where as good music as that of last evening could ever be heard from a purely amateur aggregation of players. That this is so may well be considered a matter of local pride.

The program rendered was a well selected one, and while being made up of numbers that would not fall to please, was one which gave full opportunity for showing the skill of the performers. The piano selections of Prof. F. Kahl were especially pleasing. While he was playing the Wagner-Liszt "Festspiel und Brautlied" all the electric lights suddenly went out in the hall, but without interrupting in the slightest degree the brilliant execution. Before the lights were again restored, the performer had responded to two encores, a special rendition of Aloha Oe and Chopin's Waltz in A minor.

R. Rudland Bode, the director of the Symphony, proved last night the possibilities to be attained by hard work with conscientious amateur musicians.

The program follows: Waltz, "Tales from the Vienna Woods," Straus; "Dawn of Love," Bendix; Piano Solo, "Festspiel und Brautlied," Wagner-Liszt; Teacher E. Kahl; Songs, "Ideale," Tost; "I'll Sing Thee Songs of Araby," Clay; Mr. W. B. Stockman; Overture, "Figaro," Mozart; "The Butterfly," Bendix; Gavotte, "Captivating," Tobani; Overture, "Pique Dame," Suppe; R. Rudland Bode, Director.

Owing to the many complaints that not enough time has been given for the preparation of costumes, it is possible that the Mardi Gras in benefit of the polo tour at the Seaside may be postponed until September 10. Manager Church will meet the polo committee today and they will decide.

Tomorrow a concert will be given at the Seaside, beginning at half after two, in honor of Captain Jack Quimby and the officers of the Cincinnati. Music will continue during the afternoon and evening.

Dances were given at the Seaside for U. S. S. Raleigh on Monday evening and U. S. S. Cincinnati on Thursday evening.

All dances in the future at the Seaside will be invitational. This is done in order to keep up the personnel and keep away a certain element that attend public dances.

Letters from members of the Twenty-ninth U. S. Infantry, posted at Honolulu, are being received by friends here, and report a more than ordinarily pleasant voyage. Friends at Camp McKinley, H. I., were at the pier to meet the Logan's passengers and entertained them during the hours spent at the beautiful tropical station.—Chronicle.

Thursday evening Mr. and Mrs. A. P. Taylor gave a very good poi supper in honor of Princess Kawananakoa.

"Polly" Macfarlane, the popular wife of Harry Macfarlane returned on the Sierra and is being warmly welcomed.

Mrs. Andrew Fuller was hostess on Saturday evening at a supper and bathing party. It is needless to say the younger set were very much in evidence. Those present being Misses Madge McCandless, Edna Gunn, Harriet Hatch, Elsa and Linda Schaefer, Ethel Wilcox, Katherine Goodale, Vivienne Gedge, Lily Paty and Memara Weller, Galt, Southack, Alfred Castle, George Brown, Sonny Macfarlane, Herbert Dowsett, Fred Damon, Gustav Schaefer, Derwent Kennedy, Lowreys (2), William Walker, Kid Walker, Harold Giffard and Alison Jordan.

Mr. and Mrs. H. H. Reldford have taken a cottage at the Seaside for six months.

On Monday Mrs. Abram Lewis gave a charming luncheon to some of her girl friends, among whom were the Misses Beatrice Castle, Alice Cooke, Harriet Hatch and Edna Gunn.

It is announced in a London dispatch that the Duchess of Marlborough is devoting herself in a large and general way to a field of philanthropy—the care of convicts' families—which has not heretofore occupied such special attention on the part of the charitable. The Duchess has provided two commodious and finely appointed houses for the reception of a large number of wives and children of convicts, in which they will be supported for a season and instructed and encouraged in helpful occupations, by which it is hoped the burden of life may be in some measure lightened.

Mr. and Mrs. Nicholas Longworth returned from Maui, most enthusiastic on Thursday and went at once to their cottage at the Seaside. They have cards out for an "at home" at Segside on the 4th.

Mr. and Mrs. Arthur Wall entertained on Saturday evening for Frederick Wichman who leaves on the Kōle to attend school in the East.

Six young officers on the West Virginia, the flagship of the coming fleet have engaged a cottage at the Seaside.

Among the larger entertainments given during the week was a dance given by Mr. and Mrs. Robert Lewers last Tuesday evening, given in honor of Miss Alice Cooke, Mr. Frederick Lowrey and Sherwood Lowrey. The girls and boys were all there and heartily enjoyed the Walkiki dance.

Mrs. Cushman, the wife of Lieutenant Cushman of the navy who was recently ordered East for sea duty, will take rooms at the Seaside tomorrow for a few months.

Mrs. J. A. Wilder gave a very jolly bathing party to Miss Edna Gunn on Thursday, all attending the Schaefer dance later.

One of the daintiest and prettiest luncheons of the season was given by Mrs. Helen G. Noonan on Wednesday in honor of Miss Ethel Wilcox of Kaula. The girls were dressed in their sweetest of gowns and looked charming. Besides the guest of honor were Misses Elnora Sturgeon, Edna Gunn, Harriet Hatch, Violet Damon, Lorna Laukea, Elsa Schaefer, Lily Paty, and Mrs. Arthur Wilder. Later in the day they were joined by the boys and some good tennis was played.

The coming week will surely be a lively one at the Seaside. The fleet will be in, and the "Army and Navy" hotel will do its duty in the matter of entertainment. Monday night there will be a dance given in welcome of the admiral and his officers. On Thursday the Sherman will be in with the Sixteenth Infantry and the band will play at the Seaside and there will be one or two more days during the week.

The Schaefer's dance was in a way a farewell to Miss Elsa and Miss Linda, who both are outgoing passengers later in the month. Miss Elsa Schaefer goes to Boston for a musical course.

Miss Elnora Sturgeon's entertainment on Friday evening was a little out of the ordinary, for Progressive Games were played and it proved rather novel, in that there have been so many dances for all the crowd, girls and boys.

Today the House party at the Lowreys' valley residence; tomorrow at the Klebahn's Manoa, and Herbert Dowsett's dance on Wednesday, entertainments for the younger set, are showing up a little, for on Friday the Korea takes one of the jolliest crowds ever to have left on a steamer.

Among those leaving will be the Galts and their friends, Southack and Weller; Sherwood Lowrey, Herbert Dowsett, Sonny Macfarlane, the Hatches, the Wilders, Longworths, McCla-

## ESTABLISH LANES ACROSS THE OCEAN

HOW TO PREVENT STEAMER COLLISIONS AND GIVE SAILING VESSELS SAFE CHANCE.

A shipmaster writing to a San Francisco shipping paper commenting on the recent Columbia disaster, advocates the adoption of steamship lanes to be regularly followed. He says:

"Since the loss of the Columbia I hear frequent inquiries as to what can be done to prevent or diminish the fearful loss of life and destruction to property by head-on collisions which are becoming too frequent along the North Pacific coast. It seems to me that shipowners, merchants and underwriters might devise some way to regulate the 'go as you please' style of navigation which we now have by establishing well defined steam routes between San Francisco and the northern points. In 1860 Lieut. Murray, U. S. N., advocated two steam routes or lanes for the trans-Atlantic steamers plying between New York and the channel ports of Europe. His object was to diminish or mitigate the dangers of steam navigation and the risk of life that passengers incur at sea.

"These lanes, each about five miles wide, started from Sandy Hook, N. Y., and gradually widened until at mid-ocean they were about 70 miles apart, then gradually converge at Cape Clear, Ireland.

"The southern lane was for east-bound steamers and the northern for those bound west. All the steam lines adopted these routes and had the lanes laid down on all government charts. All sailing vessels avoid them as they would a lee shore, but if in distress, by steering into one of the lanes it would not be many hours before they would be sighted by some of the steamers that use them. You seldom hear of an ocean collision between the big liners, although there is a continuous procession going east and west. If steam lanes have proved a success across the North Atlantic, why could they not be made so on our Pacific coast?—On a more confined and smaller scale. For example, mark off on a north coast chart a lane three miles wide, beginning at an offing of three miles west of Point Reyes; let this lane follow the usual course along the coast which vessel now take to the entrance of the straits off Tatoosh. Again begin at an offing say six miles west of Point Reyes; mark off another lane three miles wide, gradually diverging to the west away from the other lane until the lanes are, say ten miles apart; then run parallel with the inner lane until approaching the straits; then gradually converge off Tatoosh. The lanes could have side branches to the Columbia river and Enreka. All northbound steamers to take the eastern or inshore lane, and those bound south to take the offshore or western lane. These lanes being three miles wide ought to give ample margin for any deviation from course caused by currents or slight errors in reckoning. Sailing vessels should keep to the westward of the offshore or western lane, and when obliged to cross the line in thick weather do so at right angles if possible. When the lanes are established on the coast charts sailing vessels will recognize them as an ocean danger and navigate more carefully when in their vicinity in thick weather. The writer's many years of experience as master have proved to him the load of care and anxiety that is lifted from the captain's mind and the sense of security that passengers feel when they know that their course is clear of danger ahead, as their ship ploughs along in thick weather.

Mr. and Mrs. E. D. Tenney are giving a dinner to Mr. and Mrs. Gerritt Wilder this evening, and needless to say, it will be very charming, for who but the Tenneys can give better entertainments.

Mr. and Mrs. W. G. Irwin are entertaining this evening for Mr. and Mrs. Nicholas Longworth at their Walkiki residence.

Mr. Frank Thompson and Mr. Wickett were dinner hosts on Saturday evening at the Country Club, entertaining right royally about sixteen of their friends. They all met at the High's, then were taken to the Country Club in a tally-ho. A dance followed and all enjoyed the evening.

Mr. and Mrs. J. A. Wilder gave one of their delightful dinners on Tuesday evening for Mr. and Mrs. Gerritt Wilder, who will soon leave for the East. As their guests they entertained Mr. and Mrs. S. G. Wilder, Mr. and Mrs. E. D. Tenney, Mr. and Mrs. Ivers, Mrs. F. M. Swanzy, R. W. Shingle and S. H. Derby.

Mr. and Mrs. G. C. Potter gave a dinner in honor of Mr. and Mrs. Gerritt Wilder.

Mr. and Mrs. Gus Newell and Miss Alma Haines have returned from a visit to the Hawaiian Islands. While in Honolulu they were the guests of the Fred Knights.—Examiner.

Mrs. William Irwin, Miss Helena Irwin and Miss Helen Hyde Smith are expected home from Honolulu the end of this month. This is the second trip these two maidens have taken together to Honolulu.—Call.

## HAWAIIAN SHOW! IS A GOOD ONE

LARGE CROWD WELL ENTERTAINED AT THE OPERA HOUSE LAST NIGHT.

Nearly five hundred people were present at the Opera House last night to witness the entertainment that was given for the benefit of the Children's Hospital. The different tableaux were very pretty and the many hula dances were well performed. Princess De Fries deserves much credit for the work necessary to make these entertainments possible, was the remark heard of every one there last night.

The playing on the guitar by Professor Romero was one of the features of the evening. William Ellis sang several songs that were greatly appreciated by the audience. One of the most amusing numbers on the programme was a canoe scene, and the person of

Fine Job Printing, Star Office.

# SPORTS

## ARRANGING THE CRUISERS GAMES

BASEBALL LEAGUE ALLOWS JESS WOODS USE OF THE GROUNDS FOR SERIES.

The Trustees of the Honolulu Baseball League at a meeting the other day decided to give the use of the baseball grounds to Jess Woods for the coming games with the coast team free of charge. After taking into consideration the fact that the expenses of the coast team would be very great and that the games would be a good thing for the public, the league decided that the profits of the games should go to Woods, and after the expenses as to ticket-sellers, etc., were taken out, that Woods should have the net proceeds to cover the expense of the visiting team. The grounds were also given to Woods for the series of games with the fleet, on the conditions that the league should receive 25 per cent and Woods the other 75 per cent to help pay for the expense of bringing the coast team down. The league also decided that if the winter league would make formal application for the use of the grounds they could have them, but not so as to conflict with any of the games with the fleet team or with the coast team on a 50 per cent basis. An informal request from Eben Low for the use of the grounds providing that the dates did not conflict with any

## RIVERSIDE LEAGUE GAMES TO-MORROW

KAALA ATHLETIC CLUB AND THE JAPANESE ATHLETIC CLUB TO PLAY.

Tomorrow afternoon at 1:30 at Aala Park the Kaala A. C. and the Japanese A. C. will play the first game in the Riverside League, and the second game will be between the Chinese Alohas and the Chinese Athletic Club. Both games should be very interesting as a good deal of rivalry exists between the different teams. The second game ought to be the best of the two, as a good deal of rivalry exists between the two Chinese teams and even with the loss of Yip the regular pitcher of the Alohas they will put up a very stiff game. Johnny Amoy will pitch for the Alohas in Yips place. On Monday afternoon the Chinese Alohas will play a game with the Palama A. C. at the big league grounds and a good hard game can be counted on.

Of the proposed baseball games was granted. A letter from the Diamond Heads protesting against Ed Desha playing on the Punahou team was also taken up and the protest was decided in his favor. Treasurer Whitney presented a financial statement showing that the league had taken in \$2553.90 and had spent \$2407.94 leaving a balance of \$145.96.

# The Merchants Take Action

PEARL HARBOR AND COASTWISE SHIPPING REGULATIONS BOTH CONSIDERED AT THE MEETING YESTERDAY—OBJECTION TO CUTTING OUT STEAMERS FROM SALINA CRUZ—NEW QUARANTINE IN THE McCANDLESS BUILDING.

The Merchants' Association has completed negotiations for rooms on the second floor of the McCandless building for the governors of the Commercial Club in that building having turned down a proposition for the association to share some of the rooms of the club. This was brought out at the directors' meeting yesterday afternoon, the committee on location reporting.

The Merchants' Association's new headquarters will be room 203, second floor, McCandless building, 22x22.

The Promotion Committee wrote to say that the representatives of the Chamber of Commerce and the Merchants' Association, two from each on the Promotion Committee, had chosen the fifth member to be J. A. McLean, vice president of the I. L. S. N. Co.

Chairman G. W. Smith announced the principal business of the meeting to be consideration of a resolution and recommendation concerning Pearl Harbor, following the public meeting of the commercial men with Admiral Very the other day.

A resolution was unanimously adopted and reads as follows:

"Whereas, The necessity for adequate dry dock facilities, at or near Honolulu, has long been recognized by those engaged and interested in shipping and transportation on the Pacific Ocean, and

"Whereas, The United States is possessed of one of the most natural landlocked harbors in the world, viz, Pearl Harbor, near Honolulu, Territory of Hawaii, a harbor capable of receiving and accommodating vessels of the largest size and draught, and the commercial and strategic value of which is unequalled, and

"Whereas, The dredging of a channel erection of docks, wharves and works will, of necessity, require considerable time, therefore be it

"Resolved by the Merchants' Association of Honolulu, that we earnestly urge that early steps be taken to widen and deepen the channel entrance to Pearl Harbor, in order to make the harbor available for vessels of the naval and merchant marine, and,

"Be it further resolved, that we ask the President of the United States to incorporate in his next message to the Congress, a recommendation that appropriations be made and work commenced, at an early date, at this point which is of great importance to the commercial and the strategic pre-eminence of the United States in the Pacific ocean.

"Be it further resolved, that copies of these resolutions be sent to the President of the United States, the President of the Senate, the Speaker of the House of Representatives, members of the Cabinet, and to each member of the Senate and the House of Representatives."

In regard to the coastwise shipping law agitation, the committee thereon felt that it be recommended to the President that, temporarily at least, the coastwise shipping laws be suspended so that Hawaii could have the benefit of travel on foreign bottoms. The chair figured that the present tourist conditions were almost disheartening; he thought that it was all very well to talk patriotism, but there were different kinds of patriotism; Americans drank Scotch whiskey and smoked Havana cigars, for example. We did not want to move in any way to effect our main industry, but it was well, thought Mr. Smith, to move for some temporary relief.

Fred Waldron knew of people going to the Oceanic S. S. office in San Francisco and being unable to get round-trip accommodations guaranteed.

A resolution calling upon Congress to allow of the suspension of the coastwise laws as applying to Hawaii, at the discretion of the President, was carried as follows:

"Whereas, We feel convinced that the temporary suspension of the laws will greatly benefit the Territory by inducing travel and bringing to the notice of our fellow citizens on the mainland the many advantages which the Territory offers, and, as a consequence, the building up of the citizen population from a most desirable class; and

"Whereas, It will, in our opinion, eventually accrue to the benefit of the American shipping interests, in the up-building of traffic in the Pacific; therefore, be it

"Resolved, That we petition the Congress of the United States to authorize the President to suspend, in his discretion, from the date of the proclamation thereof, the Coastwise Shipping Laws, as applied to passenger traffic between ports of the Territory of Hawaii and the mainland.

"Resolved, That a copy of this memorial be sent to the President of the Senate, the Speaker of the House of Representatives, of the Congress of the United States, to the President and to the Hon. Secretary of Commerce and Labor.

"GEO. W. SMITH, "E. H. PARIS, "Committee."

The Bar Association's plea for higher wages for circuit judges was approved. The change of schedule to discontinue direct shipments via Salina Cruz was discussed with much bitterness, the merchants feeling that they had been ignored by the Sugar Factors and the Chamber of Commerce, which asked for the change. A committee of the three, Messrs. Petrie, Bush and Waldron, was appointed to report on the matter.

# BANK OF HAWAII

INCORPORATED UNDER THE LAWS OF THE TERRITORY OF HAWAII.

CAPITAL, SURPLUS AND PROFITS \$1,014,665.39

### OFFICERS.

Charles M. Cooke, President; F. W. Macfarlane, First Vice-President; C. H. Cooke, Second Vice-President; C. H. Cooke, Cashier; C. H. Cooke, Jr., Assistant Cashier; F. B. Damon, Assistant Cashier; Zeno K. Myers, Auditor.

DIRECTORS: Chas. M. Cooke, P. C. Jones, F. W. Macfarlane, E. F. Bishop, E. D. Tenney, J. A. McCandless, C. H. Atherton, C. H. Cooke, F. B. Damon, F. C. Atherton.

### COMMERCIAL AND SAVINGS DEPARTMENTS.

Strict attention given to all branches of Banking

JUDD BUILDING, - FORT STREET.

Claus Spreckels, Wm. G. Irwin.

# Claus Spreckels & Co.

BANKERS HONOLULU, H. T.

San Francisco Agents—The Nevada National Bank of San Francisco.

DRAW EXCHANGE ON SAN FRANCISCO—The Nevada National Bank of San Francisco.

LONDON—Union of London & Smith's Bank, Ltd.

NEW YORK—American Exchange National Bank.

CHICAGO—Corn Exchange National Bank.

PARIS—Credit Lyonnais.

BERLIN—Dresdner Bank.

HONGKONG AND YOKOHAMA—The Hongkong and Shanghai Banking Corporation.

NEW ZEALAND AND AUSTRALIA—Bank of New Zealand, and Bank of Australasia.

VICTORIA AND VANCOUVER—Bank of British North America.

TRANSACT A GENERAL BANKING AND EXCHANGE BUSINESS.

Deposits Received, Loans Made on Approved Security, Commercial and Travellers' Credits Issued, Bills of Exchange Bought and Sold.

COLLECTING PROMPTLY ACCOUNTED FOR.

# BISHOP & CO. BANKERS

Commercial and Travellers' Letters of Credit issued on the Bank of California and The London Joint Stock Bank, Limited, London.

Correspondents for the American Express Company, and Messrs. Cook & Son.

Interest allowed on term and Savings Bank Deposits.

# THE YOKOHAMA SPECIE BANK

ESTABLISHED 1886.

Capital Subscribed, Yen 24,000,000; Capital Paid Up, Yen 11,000,000; Reserve Fund, Yen 13,700,000.

### HEAD OFFICE, YOKOHAMA.

Branches and Agencies: Honolulu, New York, San Francisco, London, Lyons, Bombay, Hongkong, Dally, Newchwang, Leiyang, Peking, Hangkew, Shanghai, Chefoo, Tientsin, Mukden, Antung, Hsien, Kobe, Nagasaki, Tokio, Osaka.

The Bank buys and receives for Collection Bills of Exchange, issue Drafts and Letters of Credit, and transacts a general banking business.

Honolulu Branch 67 King Street

### NOTICE.

We are now located at our new place of business, McCandless Building, next door to W. W. Dimond & Co. Patrons and the public are invited to visit us at our new place of business.

SANG CHAN, Merchant Tailor.

# HAND-PAINTED NOVELTIES

At O. Y. Itow

Beretania St. near Emma Honolulu.

### IF YOU WISH TO ADVERTISE IN NEWSPAPERS ANYWHERE AT ANYTIME Call on or Write

E. C. DAVE'S ADVERTISING AGENCY

124 Sansome Street SAN FRANCISCO, CALIF.

# TOWN TALK

By THE MAN ABOUT TOWN.

My attention has been called to the deplorable condition of Alakea street, from the water front to Merchant street; on the Ewa side the walk is a disgrace to this city. On the completion of the new wharf, Alakea street will be a popular thoroughfare. I hope Colonel "Sam" will look into this matter and compel the property owners to put the sidewalk in proper condition.

I have a friend who lives in the Makiki district and my friend is very sore and has joined the Advertiser's gang of knockers and is after Howland's scalp. All this because J. Hastings persists in allowing silt and rubbish to run into the Makiki reservoir. Instead of diverting same into the ditch. For some time the water served to Makiki residents has been a disgrace and a menace to health; the color of the fluid is more am than Archie Young's boycotted beer. I am informed that Howland, to save a few dollars in pumping expenses, allows the Makiki freshets to fill the reservoir and the result is a fierce one, to say the least. The water department is a money-making one and its patrons are entitled to decent treatment. All of which is respectfully submitted to T. Holloway, Esq., with a hope that he will have to take a mud bath and then he will know how to sympathize with my Makiki friend.

In Honolulu, Nevada and other mining stocks are on the toboggan; I dislike to say this because my friends, who took a flier in the get-rich-quick business, will charge me with knocking, but nothing could be farther from the truth. My readers would gasp with astonishment if they could gain but an inkling of the amount of local money that has been put into worthless mining stocks. Some Honolulu people are to blame for the big loss; from friends in the mining camps stocks were sent to be sold in this city; the local sellers let their friends in the ground floor, with the resulting loss of good money. I have one man in view as I write; he returned from the goldfields with a "good thing"; his friends clamored for blocks of stock at 15c. the share. The stock was to be listed, would soon go up in price, and then one could sell out at a big profit. This was a year ago. The stock has not been listed; has dwindled in price and now the Indians are clamoring for their money, so much so, that my friend can not approach his office during business hours, for fear of being held up. A sane man, who buys mining stock, ought to take his medicine, I submit.

Why should these mining, and oil, and other stock-sellers come here for money anyhow? The banks of New York and other big financial centers are fairly loaded with money ready for investment in any legitimate proposition on the Mainland. Money is all the time seeking investment. It would seem, prima facie, that any Mainland proposition which comes to far-off Hawaii to raise money to float its stock has something the matter with it.

The boycott of the Primo beer by the hotels controlled by the Youngs is the event of the week, according to my judgment. I wonder how long the ban will last. Some of my friends who frequent the hotel bars say that there is a big demand for the local hop product, but in the words of my friend Doyle "nothing doing" when you want suds at the Young, Hawaiian and Moana. Now, I wonder if that genial youth, Archie Young, has not overreached when he tries to get at Bartlett through the brewery. The boycott is a two-edged sword; the friends and stockholders of the brewery are to fight back, so I am informed. The boycott is one of the curses of Hawaii; it is constantly resorted to by people who can afford to be generous. My experience in Honolulu teaches me that if a dependent man runs afoul of some of the ruling element he gets its good through boycotting and other methods equally as bad. Local newspapers have been "boycotted" from time to time, but newspapers have an effective way of defending themselves, and in the end the "boycotters" are glad to withdraw their pin-headed opposition. Honolulu can get along without boycotters and a man ought to be allowed to buy his beer or his automobile where and when he chooses.

The general public's idea of them was that it wasn't safe to go near them. It creates not much of a sensation now for a machine to fly over a city. Such a beginning inevitably means very quick improvement, for experience and experiment are worth more in a few years than centuries of theorizing. Perhaps we shall soon have some motor boats here and next will come airships. There is a fine long lee shore course for the former, and the latter can find just as soft places to drop here as anywhere else.

ALICE'S 200. Alice to right of them! Nick to the left of them! Trouble ahead of them— What if they blundered? "Close ranks!" fair Alice cries: "Ready! Now flash your eyes— What the you tantalize, "Noble Two Hundred."

Into a moment's fame, Ready to play the game— "Oh, we are glad we came!" How they all thundered, Thundering with sheer delight: "Gee, we must be all right; "Alice is out of sight "With her Two Hundred."

Boldly they dressed and well; Oh, my, they did look swell: "Mame's got a mash"—"Do tell!" "Somebody's powdered!" "Pass me a cigarette—" "Strike like a man?—You bet!" "Gee, but this wine is wet!" "Say, ain't it crowded?"

Deep into Envy's jaws, Headlong they rode, because One of the social laws Is to be "nub-bered," If you're the Upper Ten, Or the Four Hundred, then You are the real sen-sen.

Pickle-cumbered. Alice, what hast thou done? While you may think it fun, I am a son-of-a-gun If you've not blundered. There are a thousand here, All in the swim, my dear, And you will fudge, I fear, With your Two Hundred.

"You'll never get my vote, Charley." "I don't want your vote, Link. You'll never get my vote, Link." "I don't want your vote, Charley." Puzzle: Who were they, and what had they been discussing, under the unguttered awnings of the McCandless building? And what are they going to run for?

The Advertiser quotes Fred Kiley as saying that if he remains here he will go into the undertaking business. It is to be presumed that he will give free funerals to all liquor license commissioners and other anti-saloon men, Fennell, by the way, says he is not an aspirant for the position of criminologist in the Attorney General's department. As liquor license inspector he says he is "not tired of the booze job."

Strikes are bad all around—bad for the employer and bad for the employees; but in spite of this wise saw the striking telegraph operators appear to have public sympathy, notwithstanding the great public inconvenience. The Western Union is cordially hated on the mainland; before the Postal Union started up the Western Union had a monopoly of the business and between extortionate charges and arbitrary methods armies of enemies were formed and many of these enemies are active today. For many years the company has paid big dividends on a capital composed mostly of water; and during the many years the stockholders having been getting large slices of the juicy melon, the men have claimed that they have been overworked and underpaid. The people of San Francisco have cause to remember the Western Union; for a week or more, following the great earthquake and fire of April, 1906, the wires lead-

ing into San Francisco were down; you could not send a message to any point. While the disaster was at its height the company was accepting business at full rates, and, according to charges made in San Francisco newspapers, the messages were sent by mail. It would appear that there is something coming to the Western Union, and I, for one, hope that it may get all it is entitled to, and, in the rush, that nothing will be overlooked.

# TORPEDO PLANTER IS TO BE BUILT

VESSEL FOR LAYING MINES AND PLANTING TORPEDOES TO BE BUILT ON COAST.

WASHINGTON, August 15.—San Francisco doubtless will be glad to learn that plans for building a torpedo planter, or mine-laying vessel, for use on the Pacific Coast, have not been abandoned for the present, as had been rumored.

Through the efforts of Representative Julius Kahn, Congress appropriated last winter \$175,000 to construct a torpedo planter for the Pacific Coast. On account of the increased cost of labor and materials, it was feared that the sum allowed would not suffice to pay for the vessel, and at length it was announced, seemingly with authority, for the statement was accepted as a fact, that the project would have to be held up until next winter when Congress would be asked to increase the appropriation allowed. But it seems now that this is not so. On the contrary, Brigadier-General Arthur Murray, chief of artillery, has recently been giving considerable attention to the plans for the new vessel, which plans are expected to be ready for formal inspection and approval in a few weeks. They are being made by the marine engineers of the Quartermaster General's Department. On their completion and approval, bids for the construction of the vessel will be invited

and it is expected that it will be built on this Coast, as there is not enough labor on the Pacific Coast to do the work that is on hand there now. The new ship will be most carefully designed for the work for which it is intended. It will be about 165 feet long and some 32 feet beam, and there will be several improvements over the four vessels of similar character now in use on the Atlantic Coast. The vessel will carry a crew of about twenty men, and when in use will have a detail of two artillery officers and twenty trained soldiers to plant mines. It is planned to have the mines and equipment ready at every fortified harbor, but the mines will not be planted until war breaks out. When with proper facilities it will be possible to mine San Francisco harbor and approaches to it inside of twenty-four hours.

### SICKNESS COMES WHEN LEAST EXPECTED.

A little forethought may save you no end of trouble. Anyone who makes it a rule to keep Chamberlain's Colic, Cholera and Diarrhoea Remedy at hand knows this to be a fact. For sale by all dealers, Benson, Smith & Co., agents for Hawaii.

It may look as though you regularly get the worst of it in everything, but you don't. Fate is too big to fool with any one individual.

# BENEFIT Dance and Concert

—BY THE— CHINESE ATHLETIC CLUB

AT K. OF P. HALL, Saturday Evening Aug. 31 AT 8 P. M.

Tickets admitting Gentleman and Lady One Dollar. To be obtained from members.

# CASTLE & COOKE, LTD.

COMMISSION MERCHANTS SUGAR FACTORS.

AGENTS FOR The Ewa Plantation Company, The Waiata Agricultural Co., Ltd., The Kohala Sugar Company, The Waimea Sugar Mill Company, The Fulton Iron Works, St. Louis, Mo., American Steam Pump Co., The George R. Blake Steam Pumps, Weston's Centrifugals, The New England Mutual Life Insurance Company of Boston, The Aetna Fire Insurance Company of Hartford, Conn., National Fire Insurance Co., of Hartford, Citizens Ins. Co., of Missouri. All Policies Guaranteed by Hartford Fire.

# THE CRANE-SPINER CO., LTD

Dealers in Sewing Machines of All Kinds.

Also Hawaiian Souvenirs, Hats and Curios.

108 N. King St., near Maunakea. Phone Main 494. P. O. Box 549

# Ellis Bros. Glee Club

William Ellis, Manager. Music for Entertainments, Dances, Dinners, Socials, Etc. Leave orders with John Peterson, Wall Nichols Music Department.

# LEADING HAT AND CLOTHES CLEANERS

CLOTHES CLEANED DYED AND PRESSED

Join our suit club. Four suits pressed for \$1.50 a month.

Felix Turro, the expert hat cleaner is now with us. No one in town to equal him.

1154 Fort Street. Telephone Main 493.

# JAPANESE AND AMERICAN DRY GOODS.

Straw Hat Manufactured. K. FUKURODA,

# FUJI PHOTOGRAPH GALLERY

Union cor. Hotel, P. O. Box 720.

### Fraternal Meetings

#### HARMONY LODGE NO 3, I. O. O. F.

Meets every Monday evening, at 7:30 in Odd Fellows' Hall, Fort Street. Visiting brothers cordially invited to attend.

W. F. GEHRING, N. G. E. R. HENDRY, Sec.

#### HONOLULU LODGE 616, B. P. O. E.

will meet in their hall, King street, near Fort, every Friday evening. By order of the E. L.

FRANK E. RICHARDSON, E. R. HARRY H. SIMPSON, Socy.

# Honolulu Iron Works.

STEAM ENGINES, SUGAR MILLS, BOILERS, COOLERS, IRON, BRASS AND LEAD CASTINGS.

Machinery of Every Description Made to Order. Particular Attention paid to Ship's Blacksmithing. Job Work Executed on Short Notice.

MENS' GOODS: shirts, pajamas, underwear, ties and socks.

LADIES' GOODS: embroideries of all kinds and lace dress goods. Prices very reasonable.

CHAN KEE, 23 Hotel Street near Bethel.

RING UP PHONE 212.

For Reliable and Speedy Messenger Service, 932 Fort Street.

S. KAY, Manager.

# L. Kong Fee, MERCHANT TAILOR.

Hotel St. near Nuuanu. Fashionable Suits at Reasonable Rates a Specialty. Rates very reasonable. Give us a call.

REMOVED.

# TAE J. CARLO PAWNC

To 1018 Nuuanu Street, near King. WITH LOTS OF MONEY.

# S. SAIKI, Bamboo Furniture AND PICTURE FRAMES.

Neat and Handsome Designs Made To Order. 563 Beretania Street, near Punchbowl. TELEPHONE BLUE 881.

# Vienna Bakery

GOOD Bread the only HOME-MADE BREAD in town. All kinds of cakes our specialty. Wagon delivery through city. Phone Main 179. No. 1120 Fort St.

# Clothes Neatly CLEANED AND PRESSED

Honolulu Clothes Cleaning Co. Alakea St., near King. Phone Main 148

# Koa Furniture

UPHOLSTERING AND REPAIRING. WING CHONG CO. Cor. King and Bethel. P. O. Box 1099.

# M. OHTA, JAPANESE CONTRACTOR AND CARPENTER.

House No. 762 Sheridan St Telephone White 601.

# Horse Clipping.

Luke Rogers is back again from Maui, clipping horses at the old stand, corner Punchbowl and King streets.

# Absolutely

THE LATEST PATTERNS In suitings for Spring and Summer wear. These goods are limited to one suit per pattern.

Good dressers will not have their ideas limited if they buy here. Try us and be satisfied.

W. W. Ahana Co. Ltd Merchant Tailors Phone Blue 2741 No. 62 King Street.

# KWONG HING CHONG CO.

Importers and dealers in English, American and Chinese Dry Goods. Chinese Grass Linens, Ladies' Shirt Waist Patterns, Grass Cloth and Grass Linen Table Covers, Pongee and all kinds of Silks, Matting and Camphor Wood Trunks. 1024 Nuuanu street between King and Hotel streets, Ewa side. P. O. Box 971 Honolulu, H. T.

Fine Job Printing, Star Office.

**"GURNEY"**  
The Only Cleanable REFRIGERATOR

Be not deceived by Idle Talk and arguments put forth in favor of other Cleanable Refrigerators. There is only one on the market and that is the one we tell you about.

WITH THE **Removable Ice Compartments**

Which is characteristic only of the "Gurney" you can clean the whole Refrigerator with boiling water as much as you like. Every nook and corner is accessible, for when removable compartments and shelves are out only the four walls remain—and these are water proof.

**Therefore Germ Proof**

theories and ideas are only realized and chrysalized in the construction of the Gurney.

**W. W. Dimond & Co., Ltd**  
DISTRIBUTORS FOR HAWAII.  
53-57 KING STREET, HONOLULU.

A REMINDER

This is to remind you that we have a well equipped floral department where you can get the finest flowers and cut plants in the city.

WOMAN'S EXCHANGE, Hotel Street near Union.



IT IS SAID That an ounce of preventative is worth a pound of cure, but PACHECO'S DANDRUFF KILLER will both cure the worst case of dandruff and prevent the hair from falling out.

PHONE MAIN 232.

James T. Taylor, M. Am. Soc. C. E.

CONSULTING HYDRAULIC ENGINEER, Honolulu, T. H.

NEW LINE OF

Handcraft Furniture, Artistic and Simple in Design.

We would be pleased to show it to you.

J. Hopp & Co. 185 King Street.

BOYS' SCHOOL CLOTHING.

The Newest and Best at Silva's Toggery King Street, Elk's Building.

The Aquarium Spuid

Or Octopus in a Souvenir Postal. Also Water Lilies, a beauty. Brass, Pottery, Mats.

HAWAII & SOUTH SEAS CURIÓ CO. Alexander Young Building.

Your Luncheon If you enjoy a lunch that is better than you get at home, and a good deal better than some cooks put up, you should go to Scotty's.

THE ROYAL ANNEX

Cor. Nuuanu and Merchant Sts.

SUN CHUNG KWOCK B), LTD

CHINESE NEWSPAPER PUBLISHING AND JOB PRINTING.

No. 49 Cor. of Smith and Hotel Sts.

NEW ADVERTISEMENTS.

Land Sales (2).....Page 6 Expert Dentists.....Page 6 Scotty's Royal Annex.....Page 8 Vickers Repair Shop.....Page 8 Honolulu Gas Co.....Page 8 Manufacture Shoe Co.....Page 8 Sachs Dry Goods Co.....Page 8 Lewis & Co.....Page 4 Chamber Simmons.....Page 6

NEWS IN A NUTSHELL

Paragraphs That Give Condensed News of the Day. THE WEATHER.

Local Office, U. S. Weather Bureau, Young Building, Honolulu, T. H., August 31, 1907.

Temperatures, 6 a. m.; 8 a. m.; 10 a. m.; and morning minimum: 78; 80; 82; 82; 72.

Barometer reading: absolute humidity (grains per cubic foot); relative humidity, and dew point: At 8 a. m.: 29.95; 6.998; 64; 67.

Wind: Velocity and direction at 6 a. m.; 8 a. m.; 10 a. m.; and noon: 2, E.; 4, E.; 9, NE.; 11, NE.

Rainfall during 24 hours ending 8 a. m.: 0.

Total wind movement during 24 hours ended at noon, 125 miles.

WM. B. STOCKMAN, Section Director.

SUGAR: Aug. 19, 3.89 cents a pound, or \$77.80 per ton; last previous quotation Aug. 7, 3.973 cents a pound or \$78.75 per ton.

LONDON BEETS: Aug. 30, 9 shillings, 10 1/2 pence; last previous quotation, Aug. 29, 10 shillings.

Low prices at New England Bakery. Carriage and automobile painting and repairs at Schuman Carriage Co.

A chance for the Boys and Girls to make money. We will pay 10c per lb. for small Red, Ripe Chile Peppers, any quantity. New England Bakery.

Dinner ware in large assortment at W. W. Dimond & Co. Sets from \$8.50 to \$165.00.

Two land sales are advertised for September 30.

A bunch of keys was found in the McCandless Building.

The Expert Dental Parlors are now located at the corner of Port and Hotel streets.

Sachs' annual sale of Remnants which begins on Monday, will be a great bargain event. Don't miss it.

Services at the prison tomorrow will be under the direction of John Martin. Mrs. Rider will have charge of the music.

Remember Monday evening, September 2, the reception and dance at the Royal Hawaiian Hotel to the Bulletin girls.

Caroline Lunggren was this morning granted a divorce from A. L. Lunggren on the grounds of desertion and non-support.

If you want real good shoes for boys go to Manufacturers' Shoe Co. A correct fit assured and long wearing shoes guaranteed.

Judge De Bolt yesterday issued an order of discharge to H. Focke as executor of the will of Thomas T. Gay, approving the report filed.

Go to Scotty's at the corner of Nuuanu and King street for a meal that compares with the best served in a French restaurant on the coast.

Save worry by using a gas stove. The Honolulu Gas Co. has an expert stove man who looks up trouble and ends it, if it happens to be in a gas stove.

At the Leahi Home tomorrow services will be held. Miss Gertrude Hall sing "Just For Today" and "The Holy City." Visitors are specially invited to assist in the services.

The shoes mended at the Vickers' Shoe Repair Shop on Union street are guaranteed to wear better than those fixed in other places and you get the work done for much less money.

Oscar S. Straus, Secretary of Commerce and Labor, Mrs. Straus and Roger Straus were entertained at dinner Sunday last by Mr. and Mrs. Isidor Jacobs, at their residence in this city.—Chronicle.

Postal of the famous aquarium squid or octopus. Other new things at the Hawaii & South Seas Curio Co., Alexander Young Building. Exquisite fans, baskets, mats, taps, hats and souvenir curios.

Mrs. Antonette Belger, of Texas, who spent some weeks in Honolulu last spring and made numerous friends returned this week from a tour of China and Japan. She will sail for the Coast next Wednesday.

A discontinuance was entered yesterday by the plaintiff in the case of Henehaka Kukapu vs. B. Cartwright, executor of the estate of Domitilla K. Palko, deceased, which has been pending in the Circuit Court since the April term.

In the matter of the estate of Mary Ann Gay, deceased, Judge Lindsay this morning granted a petition of the executor of the will and ordered the extension of a mortgage on certain property involved for six months at an

\$2500

will buy a fine home. Easy terms.

TRENT TRUST CO

increase of interest from six to seven per cent.

Judge De Bolt approved the report of the master in the accounts of W. O. Smith, guardian for Frida and Arthur Gay, minors. Both accounts are the 12th annual statements of the estate, and shows an income from the property of each children for the past year of nearly \$10,000.

"Bob" the beautiful colie of the Seaside has been stolen and manager Church feels quite sure that he is on the Raleigh as several threats were made that he would be taken on that ship. If "Bob" does not turn up in a day or so, Church will telegraph Captain Peters in Frisco asking for information.

Work has been started on the rebuilding of the house for the president of Oahu College at Punahou, to replace the structure burned down. No contract has been given out for the building, as the trustees decided to have the work done by day labor under their own supervision. Closson W. Enjory is the foreman in charge.

That perfect Champagne, Extra Dry Monopole (Red Top), the one you don't feel "next morning"; and these elegant smokes in the Old Government Plantation Cigars, all light colors. They can be had at Lewis & Co., Ltd., the wine and cigar dealer, 189 King St., telephone 240. Send for a small bottle and a box of smokers now.

PUTTING IN THE GUTTERS NOW

NEW AWNING ORDINANCE OF THE BOARD OF SUPERVISORS IS BEING COMPLIED WITH.

A number of people are having their new gutters put on today, in conformity to the new ordinance of the Board of Supervisors, among which are a number of people who signed the petition circulated by J. A. McCandless. McCandless would not illicit any information regarding his feeling in this two penny ordinance as he called it, but by his manner indicated that he was going to obey the law that has lately been passed by the County Council.

WONDERFUL FEAT OF THE TUG IROQUOIS

The fact that the tug Iroquois has no wireless apparatus on board leads special interest to the following story:

VALLEJO, August 23.—Much gratification is felt at the Mare Island Navy Yard over the exceptionally long-distance wireless message received at the Farallone station from the naval tug Iroquois, as the wireless apparatus, both at the Farallones and aboard the tug, was installed by the equipment department of this station. The Iroquois, which was under repairs here some few months ago, stopped at the Midway islands, 2770 miles from the Farallones, and while there called up the latter station, asking for the correct time in San Francisco in order that the tug could adjust her chronometers.

The message was sent by the commander of the tug, Lieutenant-Commander James F. Carter, who was received distinctly in San Francisco and communication was kept up for some minutes, the tug and the Farallones conversing easily. This is one of the best tests of the wireless ever made on this coast and has been most gratifying to the officials and employes at Mare Island, by whom the wireless work for the Pacific squadron as well as at all the stations along the coast has been done.

IMPORTANT RED CROSS MEETING

CONGRESSMAN LONGWORTH MAY ADDRESS GATHERING IN DOLE'S CHAMBERS ON MONDAY.

A meeting will be held by the Red Cross Society, at Judge Dole's chambers, for perfecting the organization, receiving reports, and discussion of the principles of the Society and their local application, Monday afternoon, at 3 o'clock. It is expected that Congressman Longworth, who introduced the bill providing for the creation of Red Cross Societies under the direction of the War Department, and Mrs. Dunbar, an officer of the Red Cross Society of San Francisco, will be among those who will address the meeting.

Fine Job Printing, Star Office.

BIG BOOKING FOR THE SIERRA

HUNDRED AND FIFTY PERSONS WANT TO GO TO THE COAST WEDNESDAY.

One-hundred-and-fifty people are booked for passage to the Coast in the O. S. S. Sierra. As in the custom in Honolulu, many intending travelers book for passage on two or more boats and pick their steamship at the last moment and it remains to be seen whether the Sierra takes away all who have booked or whether the majority go on the Korea a day or so later. By the same token, some booked for S. S. Korea may go up in the Sierra.

The Sierra sails, probably, on Wednesday afternoon next for San Francisco, the exact hour to be announced later. Those who have booked for passage are: Dr. Dowling, Mr. and Mrs. H. A. Baldwin, M. P. Hiles, W. R. Walters, Miss Bessie Crewes, Miss B. King, Mr. and Mrs. G. P. Wilder, Mr. and Mrs. A. D. Baldwin, W. H. Bunday, Mr. and Mrs. J. Vaughan, C. Von Hamm, Master Alexander Young, Mrs. Berndt, Mrs. E. Baker, G. Canavaro, Miss T. L. Handlette, Mrs. Griswold, Miss Hattie Saffery, Miss Aloia, Miss Callie Lucas, Miss Hester Lemon, Miss Katie Sadler, Miss Lillian Munday, Miss Daisy Todd, Mrs. Weathered, Miss Emma Rose, Miss Bernice Dwight, Miss Hoyt, Miss Ruddy, S. A. Baldwin, J. P. Cooke, Capt. Van Oterendorp, Mr. and Mrs. E. Hackett, Mr. and Mrs. Kingsbury, Sanborn, Mr. and Mrs. M. B. Parker, F. M. Stillman, O. W. Kuhn, wife and son, D. A. Blenman, D. H. Davis, Dr. H. S. Oppenheimer, Mrs. Bieger, Mr. and Mrs. G. H. Mead and son, Mrs. M. Schmidt, Miss Rosenberg, Miss D. White, Miss J. A. Cooke, S. A. Miller, G. Miller, Miss M. Berger, Miss G. Dodge, B. H. Skinner, A. B. Fleming, C. M. Herbert, G. E. Macfarlane, G. J. Brown, Mr. and Mrs. Gladys, F. Orbell, H. E. Pickett, K. W. Heye, Mr. and Mrs. J. S. Maloney, C. D. Miner, Capt. Fleming, E. W. Kopke, D. F. Mann, Miss Grace Dunlop, Miss Belkows, D. A. Dwyett, Mr. and Mrs. S. Rosenberg, W. Hughes, J. Hughes, Chang Bing, Miss L. Mossman, Mrs. J. J. Hogan, Dr. Campbell, Mr. and Mrs. C. A. Bacheider, John Rowland, W. E. Kimball, M. Philip, C. Baddaky, wife and child, Mr. Brasch, Miss Brasch, Master Brasch, Mr. and Mrs. Schaws and two children, J. H. Shephard and wife, A. Dee, David Dias, Mr. Anclie, Mrs. H. T. Waity and two children, Mrs. J. Hansman and 2 children, Miss J. Wassman, Mrs. M. S. Williams, Mrs. M. S. Williams, Mrs. Woolsey, Mr. and Mrs. Woolen and 4 children, Mrs. Helen Rowland, Miss Hazel Rowland, Mrs. J. T. Wight and child, Mr. M. Tavares, daughter and son, R. Manbury, W. A. Naylor, R. Windrath, Mrs. L. Dee, Miss M. Dee, Miss N. Dee, Mrs. Sexton, Mr. and Mrs. Weed and child, W. A. Wayern, R. Mansbridge, R. Verber.

COUNTY RAISES STARS AND STRIPES

OLD GLORY NOW FLOATS ABOVE THE QUARTERS OF THE OAHU OFFICIALS.

Promptly at eleven thirty this morning, Captain Berger raised his baton, and the strains of the Star Spangled Banner floated heavenwards, and at the same moment Miss Mary Achuek one of the clerks in the County Attorney's office started to haul away in true man-of-war's style, the halyards that were used to hoist the first flag, that has ever flown to the breeze from the pole on the top of the county offices.

Long before the time mentioned for the patriotic ceremonies people began to assemble to witness this flag raising that was mentioned exclusively in yesterday's Star, and the four corners of Port and King street were lined with people.

For some reason or other the Board of Supervisors have neglected to have a flag over their offices, and it was decided by the board the other night that as a flag was supposed to float to the breeze from the flag pole of every public building it was time that they should have one also.

A man always says, "Well, I suppose you know your business best," as if he didn't mean it.

The Metropolitan Meat Co., will close on Monday (Labor Day) at noon.

WELA-KA-HAO.

Which being translated means don't keep your valuables in trunks; they are neither fire-proof nor burglar-proof.

For four dollars per year (a little more than one cent per day) you can rent a box in our Safety Deposit Vault, which will hold all your valuable documents and jewels.

Ever see an up-to-date Safety Vault? No! Come in and examine ours; it is worth while. Henry Waterhouse Trust Company, Ltd.

Remnants! Remnants!! OUR ANNUAL SALE ..OF..

REMNANTS

BEGINS Monday Morning Sept. 2nd.

THIS WILL BE ONE OF THE GREATEST BARGAIN EVENTS Dont Miss it

James F. Morgan, AUCTIONEER AND BROKER.

847-857 Kaahumanu St. Tel. Main 71.

QUALITY SHOE EIXING

can be accomplished only by the up-to-date method and you pay us very little for our time but get a quality of leather twice as good. This means double the life to the shoe. Note our prices:

- Men's half sole and heel, sewed .....\$1.25 Women's half sole and heel, sewed ..... 1.00 Men's rubber heels ..... .65 Women's rubber heels ..... .50

And we don't make you wait a week.

VICKERS SHOE REPAIR SHOP Union Street, Above Hotel Street.

日布時事社

TO ATTRACT THE JAPANESE TRADE advertise in THE DAILY NIPPUN JIJI, the most popular and widely circulated evening paper among the Japanese colony.

JOB PRINTING A SPECIALTY with either language of Japanese, Chinese, Korean or English.

The Nippu Jiji Co., Ltd., Y. SOGA, Manager. Hotel Street near Nuuanu. Phone Main 48.

ONLY ONE WEEK SPECIAL SALE!

FOR BOYS:—DOUBLE BREASTED SUITS, WOOLEN KNEE PANTS, COTTON KNEE PANTS, SHIRTS, SOCKS, SHOES, HATS, Etc.

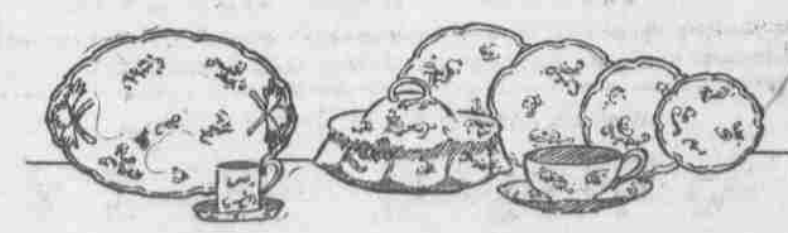
YAT LOY CO. King near: Nuuanu. HONOLULU, T. H.

PURE ICE CREAM

We use rich cream and milk, fresh Island eggs from a small farm near Honolulu, and pure flavors in making our ice cream. No corn starch or other substitute. Our big scientific freezer turns it out smooth and delicious.

We sell in small or large quantities and make fancy moulds for parties and banquets. Family trade especially solicited. Phone 311.

The Palm Cafe, "The Home of Good Things." Hotel St., Phone 311.



The famous Violet Dinner Ware is an open-stock pattern with us.

We hardly need tell you that the open stock idea is new and affords an opportunity to all to possess a complete set if desired. From an initial purchase you can build up until the set is complete. Another feature is that you can replace breakage at a moment's notice.

56 pc. Set, 6 of each, \$16.50 104 pc. Set, 12 of each, \$30.00

W. W. Dimond & Co., Ltd

HOUSEFURNISHING LEADERS. 53-55-57 King St., Honolulu.

DAILY STOCK REPORT

Between Boards—Sales: \$5000 Paia 6s, \$100.00; \$5000 Olan 6s, \$90.25. Session Sales. 5 Ewa \$25.25; 8 Haw. C. & S. Co., \$81.00.

Dividends—Aug. 31, 1907: C. Brewer & Co., 1 per cent; Ewa 1 per cent; Honolulu 1 per cent; Walmanalo 2 1-2 per cent; Hawaiian Electric 3-4 per cent; Otowalu 1 per cent; Hon. B. & M. Co., 3-4 per cent. Sept. 1, 1907: Haiku 1 1-2 per cent; Paia, 1 per cent; Pioneer, 1 per cent.

Notice—There will be no session of the Exchange Labor Day, Monday, September 2, 1907. Legal holiday.

Table with columns: Quotations, Bid, Asked. Lists prices for various commodities like Ewa, Haw. Agr. Co., Hawaiian Com., Haw. Sugar Co., Honolulu, Honokaa, Haiku, Kahuku, Kihel, Koloa Sug. Co., McBryde, Oahu Sugar Co., Onomea, Ookala, Olan Sugar Co., Paauhau, Pacific, Paia, Pepeekeo, Pioneer, Waialua Agri., Waimea, I. I. S. N. Co., Hon. R. T. Co. com., Mutual Tet., Nahlku Rub. Co., Oahu R. & L. Co., Hon. B. & M. Co., Fire Claims 4s., Haw. Ter. 4s., Haw. Ter. 4 1-4s., Haw. Ter. 4 1-2s., Haw. Ter. 3 1-3s., Haw. Govt. 5s., Haiku 6s., Hon. R. T. Co. 6s., Kahuku 6s., O. R. & L. Co. 6s., Olan Sugar Co. 6s., Paia 6s., Waialua Agri 6s., McBryde 6s.

CHRISTIAN CHURCH.

9:45 a. m., Bible school; 11 a. m., Sermon. "Man's Only Hope." 6:30 p. m., Y. P. S. C. E. Subject, "I Can and I Can't." 7:30 p. m., Sermon. "Does God Answer Prayer? Is It Reasonable To Expect It?" All are welcome.