

NEW Display OF Misses' and Children's HATS

EXCLUSIVE DESIGNS

DUNN'S

Investigate Our Wonderful Magazine Subscription Offer

HAWAIIAN NEWS CO., LTD.

"Everything in Books" Brown & Lyon Co., Ltd.

Alex. Young Building.

Absolutely NEW MOULDING Arts and Crafts Shop

OUR

MACHINE SHOP HAS NEW AND COMPLETE EQUIPMENT.

Try us—our work is the best and our charges reasonable.

The von Hamm-Young Co. Ltd. LOCOMOBILE

"The Best Built Car in America." SCHUMAN CARRIAGE CO., LTD. AGENTS.

HOTEL STEWART SAN FRANCISCO Geary Street, above Union Square

Plantation Reservoirs, Railroads, Stone Fences. P. M. POND CONTRACTOR

CALL TEL. 3028 BEST CLEANER AND DYER U. TOGAWA

Scandinavia Belting HONOLULU IRON WORKS CO. MAY'S OLD KONA COFFEE

IMMIGRATION PROBLEM IS TAXING THE MAINLANDERS

The President Says Too Many Land at Ellis Island--Wants to Divert Part of the Stream Elsewhere.

NEW YORK, Nov. 10.—Immigration has become a serious problem for the United States...

The President says that too many immigrants land at Ellis Island, and that an effort should be made to divert a large part of the arrivals to southern and Gulf States ports...

Statistics are not yet available for the decade ending in 1910, but during the ten years from 1899 to 1909 the foreign population of this State doubled...

The trouble is that nothing is being done toward informing immigrants regarding agricultural conditions in this country.

The immigration commission, sent abroad a few years ago, found that farm land in Europe was proportionately dearer than in America...

Statistics compiled by the immigration bureau show that during the past fiscal year immigrants sent \$27,000,000 to Europe...

The total immigration to America last year was 1,911,570, and those brought with them \$17,321,829...

Of all immigrants coming into the country, the Spanish Americans are the best fixed financially...

While the United States is a large proportion of the arrivals are sent to Ellis Island...

Government Immigration Bureau. There is a growing feeling among the government...

Come Aloues Patent. The Aloues Patent is a new and valuable discovery...

Have Planned a Remedy. An association of Italians has been formed to study the question and provide a remedy...

The argument is that the Italian immigrants are not necessarily any worse than any other nationality...

It is now proposed to divert the new arrivals into specially built, sanitary colonies in the suburbs...

PRINCE RUPERT A SPLENDID VESSEL Excursionists From Northwest Will Travel on the Best There Is on Pacific.

The Prince Rupert which has been chartered for a Puget Sound excursion is a twin screw vessel...

Length over all, 220 feet; breadth extreme, 42 1/4 feet; depth moulded to deck, 20 feet; gross tonnage, 3580 tons...

The engine room is designed as a long narrow space, 110 feet long, 20 feet wide, and 12 feet high...

When the final analysis is made of clothing...



WHEN the final analysis is made of clothing...

Stein-Bloch Suits

lead all others.

We have your size and style

M. McINERNEY, LTD. Fort and Merchant Sts

F. E. DAVIS & CO. Merchandise Brokers Nuuanu and Merchant Streets

J. Magnin & Co. INC.

No matter if you are in San Francisco, or at home, do your shopping at

MAGNIN'S

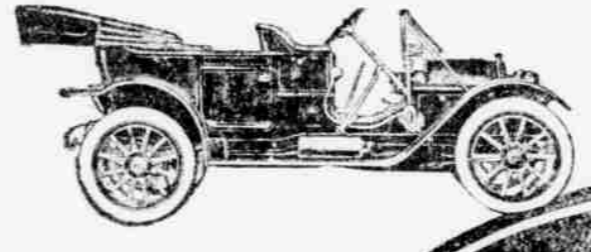
All packages to the "Islands" will be sent free of charge

We carry the largest and most up-to-date stock of merchandise at popular prices.

Send for our Infants' and Children's Wear catalogue.

Grant Avenue and Geary Street, San Francisco, Cal.

is 320 feet long and the Alameda is 238 feet; the Prince Rupert has a tonnage of 3580; the Alameda, 3155. The Prince Rupert develops 6000 horsepower, while the Alameda's is about half that.



This Monogram in Blue and White stands for all you can ask in a Motor Car.

Chalmers "30" \$1500 Chalmers "Forty" \$2750

Licensed Under Selden Patent

Chalmers MOTOR CARS

Not How Many But How Good

The makers of Chalmers Cars don't try to turn out the greatest number of cars, but they bend every effort toward making the very best car in quality, workmanship, style and finish...

Associated Garage, Ltd. DEALERS IN MOTOR CARS.

ART GLASS DOMES

AND

Reading Lamps

Specially Selected for the Holiday Trade

The Hawaiian Electric Co., Ltd.

KAIMUKI

The Home District

Buy a Lot from

Kaimuki Land Co., Ltd.

Fort and King Sts.

Best Beef and Mutton

It is best when we buy it and best when we sell it because it is kept free from fly-contamination. Nuff said.

The Metropolitan Meat Market

HEILBRON AND LOUIS. PROPS.
Telephone 1814

THE SCHURMANN INSTITUTE

OF

NATURE CURE AND OSTEOPATHY

Combining OSTEOPATHY, Chiropractic, Electro-Therapy, Thermotherapy, Hydrotherapy, Dietetics, Etc., Etc.

ELECTRIC LIGHT BATHS WITH COMPETENT MASSEUR AND MASSEUSE IN ATTENDANCE.

Treatment of the Eyes OSTEOPATHICALLY and fitting of glasses.

DR. F. SCHURMANN

OFFICE—167-179 Beretania Ave., cor. Union St. Telephone 1733.
HOURS—8 to 12 A. M. 2 to 6 P. M.

JUST ARRIVED

The very latest pattern in—

FIBRE RUGS

Direct from the Manufacturer.

Coyne Furniture Co.

FAIRMONT HOTEL

The Most Superbly Situated Hotel in the World OVERLOOKING THE ENTIRE BAY OF SAN FRANCISCO, THE GOLDEN GATE AND THE REBUILT CITY. CONVENIENT TO SHOPPING, THEATER, BUSINESS AND RAILROAD CENTERS.

THE EPITOME OF HOTEL EXCELLENCE

Operated on Both American and European Plan.

Containing all the conveniences and luxuries a good hotel should have, with many unique, original and exclusive features. Entirely refurbished and refitted at a cost of over three million dollars. Special center of the city. Headquarters of the Army and Navy—scene of most of the social festivities.

ACCOMMODATIONS FOR 1000 GUESTS.

RATES:

American Table d'Hôte Plan, one person, per day \$1.50 and upwards
European à la Carte Plan, room and bath, one person, per day, \$2.50 and upwards

MANAGEMENT PALACE HOTEL COMPANY
Also Operating Palace Hotel

SAN FRANCISCO

READ THE ADVERTISER

TOM SHARP, The Painter
Elite Building
Phone 1697

SHARPSIGNS

Signs of all kinds.
Scenic Work, Decorating,
Graining, Paper Hanging, Etc.

STILL HAVE THEIR EYES ON HAWAII

Tourist Agencies All Over the World Make Enquiries of Promotion Committee.

The United States and other countries are still showing a keen interest in Hawaii. The Hawaiian Islands are still being looked upon as a desirable place for tourists to visit. The Hawaiian Islands are still being looked upon as a desirable place for tourists to visit.

Within the past week we have received inquiries from the following countries: England, France, Germany, Spain, Italy, Canada, Australia, New Zealand, and the United States.

Reduction in the price of the Hawaiian Islands is being made. The price of the Hawaiian Islands is being made.

We are preparing a second edition of our "Hawaii Travel Guide." This book will appear towards the end of 1911.

It is a pleasure to inform you that we have received inquiries from the following countries: England, France, Germany, Spain, Italy, Canada, Australia, New Zealand, and the United States.

It is a pleasure to inform you that we have received inquiries from the following countries: England, France, Germany, Spain, Italy, Canada, Australia, New Zealand, and the United States.

It is a pleasure to inform you that we have received inquiries from the following countries: England, France, Germany, Spain, Italy, Canada, Australia, New Zealand, and the United States.

It is a pleasure to inform you that we have received inquiries from the following countries: England, France, Germany, Spain, Italy, Canada, Australia, New Zealand, and the United States.

It is a pleasure to inform you that we have received inquiries from the following countries: England, France, Germany, Spain, Italy, Canada, Australia, New Zealand, and the United States.

It is a pleasure to inform you that we have received inquiries from the following countries: England, France, Germany, Spain, Italy, Canada, Australia, New Zealand, and the United States.

It is a pleasure to inform you that we have received inquiries from the following countries: England, France, Germany, Spain, Italy, Canada, Australia, New Zealand, and the United States.

It is a pleasure to inform you that we have received inquiries from the following countries: England, France, Germany, Spain, Italy, Canada, Australia, New Zealand, and the United States.

It is a pleasure to inform you that we have received inquiries from the following countries: England, France, Germany, Spain, Italy, Canada, Australia, New Zealand, and the United States.

It is a pleasure to inform you that we have received inquiries from the following countries: England, France, Germany, Spain, Italy, Canada, Australia, New Zealand, and the United States.

It is a pleasure to inform you that we have received inquiries from the following countries: England, France, Germany, Spain, Italy, Canada, Australia, New Zealand, and the United States.

It is a pleasure to inform you that we have received inquiries from the following countries: England, France, Germany, Spain, Italy, Canada, Australia, New Zealand, and the United States.

It is a pleasure to inform you that we have received inquiries from the following countries: England, France, Germany, Spain, Italy, Canada, Australia, New Zealand, and the United States.

It is a pleasure to inform you that we have received inquiries from the following countries: England, France, Germany, Spain, Italy, Canada, Australia, New Zealand, and the United States.

It is a pleasure to inform you that we have received inquiries from the following countries: England, France, Germany, Spain, Italy, Canada, Australia, New Zealand, and the United States.

It is a pleasure to inform you that we have received inquiries from the following countries: England, France, Germany, Spain, Italy, Canada, Australia, New Zealand, and the United States.

It is a pleasure to inform you that we have received inquiries from the following countries: England, France, Germany, Spain, Italy, Canada, Australia, New Zealand, and the United States.

DO NOT SCOLD NERVOUS CHILDREN

Give Them a Safe Tonic
W. K. W. Strengthener
W. K. W. Strengthener
at a Dose of 1/2 Teaspoonful

Many a child has been called wild and unruly because of nervousness. The child is not wild and unruly because of nervousness. The child is not wild and unruly because of nervousness.

Children who are nervous and wild are often called wild and unruly. Children who are nervous and wild are often called wild and unruly. Children who are nervous and wild are often called wild and unruly.

Children who are nervous and wild are often called wild and unruly. Children who are nervous and wild are often called wild and unruly. Children who are nervous and wild are often called wild and unruly.

Children who are nervous and wild are often called wild and unruly. Children who are nervous and wild are often called wild and unruly. Children who are nervous and wild are often called wild and unruly.

Children who are nervous and wild are often called wild and unruly. Children who are nervous and wild are often called wild and unruly. Children who are nervous and wild are often called wild and unruly.

Children who are nervous and wild are often called wild and unruly. Children who are nervous and wild are often called wild and unruly. Children who are nervous and wild are often called wild and unruly.

Children who are nervous and wild are often called wild and unruly. Children who are nervous and wild are often called wild and unruly. Children who are nervous and wild are often called wild and unruly.

Children who are nervous and wild are often called wild and unruly. Children who are nervous and wild are often called wild and unruly. Children who are nervous and wild are often called wild and unruly.

Children who are nervous and wild are often called wild and unruly. Children who are nervous and wild are often called wild and unruly. Children who are nervous and wild are often called wild and unruly.

Children who are nervous and wild are often called wild and unruly. Children who are nervous and wild are often called wild and unruly. Children who are nervous and wild are often called wild and unruly.

WANTED EVERYBODY TO KNOW

That I am the "Only Man" practicing OSTEOPATHY in Honolulu who holds a Diploma from a College of Osteopathy or a Certificate from a State Board of Osteopathic Examiners. This is a fact easily verified by examining the Diplomas at the Territorial Treasurer's Office or the Certificates filed with the Board of Health.

Dr. Fred N. Steen,
1150 ALAKEA STREET
AMERICAN SCHOOL OSTEOPATHY
Kirksville, Missouri

To Make Room for Our New Stock of

HOLIDAY GOODS

WE OFFER A SPECIAL DISCOUNT OF 20 per cent On All Our Present Stock of

Fancy Decorated China

INCLUDING
Cups and Saucers, Salad Bowls, Jugs and Creamers, Fish Sets, Olive Dishes, Plates, in all sizes; Berry Sets, Cake Sets, Bon-Bon Dishes, Etc., Etc.

REMEMBER THIS:
20 PER CENT DISCOUNT IS FOR ONE WEEK ONLY!

E. O. Hall & Son, Ltd.
Household Dept. Take Elevator

PATTERN HATS

Ex S. S. Wilhelmina.
BEAUTIFUL CREATIONS.
LOWEST PRICES.

K. UYEDA
1028 Nuuanu St. Telephone 2120

Just Open

A large variety of Embroidered Dress and Waist Patterns, Ladies' Embroidered Linen Handkerchiefs, Flower Pots and Jardinieres of all sizes. Unpacking New Goods every day.

JAPANESE BAZAAR
1137 FORT STREET.



After election why not recuperate at

HALEIWA
Near the sea and the Golf Links. Two hours' ride from town by train.

THE KEYSTONE TO HEALTH IS HOSTETTER'S STOMACH BITTERS



It is the fact that Hostetter's Stomach Bitters has sold 100,000,000 bottles during the past 57 years should convince you that it is the medicine you need for Indigestion, Stomach Ills, Malaria, Fever and Ague.

FOR SALE BY
Benson, Smith & Co., Ltd.
Hollister Drug Co., Ltd.
Chambers Drug Co., Ltd.
Hilo Drug Co.
and at all Wholesale Liquor Dealers.

FOR SALE

Several lots in Kaimuki on the top of the Ridge at the end of the car line.
Finest view in the entire tract.
Will sell at a very reasonable figure.
Can arrange terms.

BISHOP TRUST CO., Limited
Bethel Street.

Elite Laundry

W. D. McINTYRE, Superintendent.
Phone 1973

Cation, Neill & Company, Ltd
ENGINEERS AND MACHINISTS.
Second and South Sts., Kakaako.
Boilers retubed with charcoal iron or steel tubes. General ship work.

TOYS! TOYS!
Games, Puzzles, Books and a fresh stock of Toys, now on sale.
WALL, NICHOLS CO., LTD.
ALL MANNER OF
Electrical Work
Leave Orders With Us.
UNION ELECTRIC CO.
Harrison Building.
C. BREWER & CO., LTD.
Sugar Factors and Commission Merchants.

OFFICERS AND DIRECTORS:
W. F. BISHOP, President
Geo. F. ROBERTSON, Vice-President and Manager
W. W. NORTH, Treasurer
RICHARD IVERS, Secretary
J. R. GALT, Auditor
Geo. R. CAMBER, Director
C. H. COOKER, Director
R. A. COOKER, Director
A. GARTLEY, Director

PINECTAR
LEITHEAD & WOODWARD.
Telephone 1517.

Oriental Goods BAZAAR NIPPON
Klap near Bethel.

OLD KONA COFFEE
McCHESNEY COFFEE CO.,
10 Merchant St.

PAPER
FOR ALL PURPOSES.
AMERICAN HAWAIIAN PAPER AND SUPPLY CO., LTD.

Wing Tai & Co.
Contractors and Builders.
Furniture, Wall Paper, Painting.
1216 Nuuanu Ave.

WANT TO SEE FENCE REMOVED

Admiral Rees Asked to Have the Marine Station Pickets Taken Away.

Admiral Rees, commanding the United States fleet in the Pacific, has requested the Hawaiian government to remove the pickets from the Marine Station at Pearl Harbor. The admiral stated that the pickets are an unnecessary expense and that they are in the way of the fleet's operations.

The Hawaiian government has agreed to remove the pickets from the Marine Station. The admiral expressed his appreciation for the government's cooperation.

The Marine pickets on Alani street, near the Honolulu Iron Works, was established on a small lot. The marine planted grass on a silted area of soil and over the road, but the pickets are now ready to be removed.

Army and Navy News

New Marine Commandant.
The Army and Navy Register of October 22 reports:

In all previous orders will soon be issued by the commandant of the Marine Corps. The new commandant will be in charge of the Marine Corps in the Hawaiian Islands. The new commandant will be in charge of the Marine Corps in the Hawaiian Islands.

Soldiers Injured at Pearl Harbor.

Several soldiers were injured at Pearl Harbor during a recent exercise. The injuries were not serious.

The Hawaiian government has agreed to remove the pickets from the Marine Station.

The admiral expressed his appreciation for the government's cooperation.

The Hawaiian government has agreed to remove the pickets from the Marine Station.

The admiral expressed his appreciation for the government's cooperation.

The Hawaiian government has agreed to remove the pickets from the Marine Station.

Several soldiers were injured at Pearl Harbor during a recent exercise. The injuries were not serious.

TWELFTH CENSUS OF BRITISH ISLES IN 1911

The twelfth census of the British Isles in 1911 has been completed. The population of the British Isles is estimated to be 45,000,000.

The population of the British Isles is estimated to be 45,000,000.

The population of the British Isles is estimated to be 45,000,000.

The population of the British Isles is estimated to be 45,000,000.

The population of the British Isles is estimated to be 45,000,000.

The population of the British Isles is estimated to be 45,000,000.

The population of the British Isles is estimated to be 45,000,000.

The population of the British Isles is estimated to be 45,000,000.

The population of the British Isles is estimated to be 45,000,000.

The population of the British Isles is estimated to be 45,000,000.

The population of the British Isles is estimated to be 45,000,000.

The population of the British Isles is estimated to be 45,000,000.

The population of the British Isles is estimated to be 45,000,000.

The population of the British Isles is estimated to be 45,000,000.

The population of the British Isles is estimated to be 45,000,000.

The population of the British Isles is estimated to be 45,000,000.

The population of the British Isles is estimated to be 45,000,000.

The population of the British Isles is estimated to be 45,000,000.

The population of the British Isles is estimated to be 45,000,000.

The population of the British Isles is estimated to be 45,000,000.

By Authority

NOTICE

BOARD OF PUBLIC LANDS.

Notice is hereby given that the following public lands are available for sale:

Island of Oahu.
Ceded lands of Kawaia, Waialua, and other lands, containing 2,000 acres. Total of 2,000 acres. 5-year term. \$100.00 per year.

Island of Maui.
Ceded lands of Maui, containing 1,000 acres. Total of 1,000 acres. 5-year term. \$100.00 per year.

Island of Hawaii.
Ceded lands of Hawaii, containing 3,000 acres. Total of 3,000 acres. 5-year term. \$100.00 per year.

Island of Kauai.
Ceded lands of Kauai, containing 1,500 acres. Total of 1,500 acres. 5-year term. \$100.00 per year.

Island of Molokai.
Ceded lands of Molokai, containing 1,000 acres. Total of 1,000 acres. 5-year term. \$100.00 per year.

Island of Lanai.
Ceded lands of Lanai, containing 1,000 acres. Total of 1,000 acres. 5-year term. \$100.00 per year.

Island of Niihau.
Ceded lands of Niihau, containing 1,000 acres. Total of 1,000 acres. 5-year term. \$100.00 per year.

Island of Kahoolawe.
Ceded lands of Kahoolawe, containing 1,000 acres. Total of 1,000 acres. 5-year term. \$100.00 per year.

Island of Midway.
Ceded lands of Midway, containing 1,000 acres. Total of 1,000 acres. 5-year term. \$100.00 per year.

Island of Lisianski.
Ceded lands of Lisianski, containing 1,000 acres. Total of 1,000 acres. 5-year term. \$100.00 per year.

Island of Pearl and Hermes Reef.
Ceded lands of Pearl and Hermes Reef, containing 1,000 acres. Total of 1,000 acres. 5-year term. \$100.00 per year.

IN THE DISTRICT COURT OF THE UNITED STATES FOR THE TERRITORY OF HAWAII.

AMERICAN SUGAR COMPANY, Plaintiff, vs. HAWAIIAN SUGAR COMPANY, LIMITED, et al., Defendants.

Notice is hereby given that the following public lands are available for sale:

Island of Oahu.
Ceded lands of Oahu, containing 2,000 acres. Total of 2,000 acres. 5-year term. \$100.00 per year.

Island of Maui.
Ceded lands of Maui, containing 1,000 acres. Total of 1,000 acres. 5-year term. \$100.00 per year.

Island of Hawaii.
Ceded lands of Hawaii, containing 3,000 acres. Total of 3,000 acres. 5-year term. \$100.00 per year.

Island of Kauai.
Ceded lands of Kauai, containing 1,500 acres. Total of 1,500 acres. 5-year term. \$100.00 per year.

Island of Molokai.
Ceded lands of Molokai, containing 1,000 acres. Total of 1,000 acres. 5-year term. \$100.00 per year.

Island of Lanai.
Ceded lands of Lanai, containing 1,000 acres. Total of 1,000 acres. 5-year term. \$100.00 per year.

Island of Niihau.
Ceded lands of Niihau, containing 1,000 acres. Total of 1,000 acres. 5-year term. \$100.00 per year.

Island of Kahoolawe.
Ceded lands of Kahoolawe, containing 1,000 acres. Total of 1,000 acres. 5-year term. \$100.00 per year.

Island of Midway.
Ceded lands of Midway, containing 1,000 acres. Total of 1,000 acres. 5-year term. \$100.00 per year.

Island of Lisianski.
Ceded lands of Lisianski, containing 1,000 acres. Total of 1,000 acres. 5-year term. \$100.00 per year.

CLOTHING ON CREDIT \$1.00 A WEEK
NO SECURITY
J. LEVY OUTFITTING CO.
178 HERBERT AVENUE, NEAR NEELE

FRENCH LAUNDRY
Phone 1491.
777 King Street.
NO BRANCH OFFICE.

Mr. and Mrs. Hashimoto MASSEURA
Rheumatism, Bruiises, and other Ailments Quickly Relieved.
Telephone 287.
178 HERBERT AVENUE, NEAR NEELE

William O. Smith
Trust Department
ESTATES MANAGED, REVENUE COLLECTED, LOANS AND INVESTMENTS MADE

Fire Insurance
AGENTS FOR ENGLISH-AMERICAN UNDERWRITERS.

Real Estate FOR SALE.
LOTS KALIHI, PUUNUI, KAWAIA AND KAIMUKI.

WE FRAME PICTURES
According to Their Requirements and with Artistic Taste.
PACIFIC PICTURE FRAMING CO.
Nuuanu, below Hotel.

C. BREWER & COMPANY, LTD.
AGENTS FOR THE
Royal Insurance Co., of Liverpool, England
London Assurance Corporation.
Commercial Union Assurance Co., Ltd., of London.
Caledonian Insurance Co.

The Upper Rhine Insurance Co., Ltd. (Marine).
Scottish Union & National Insurance Co., of Edinburgh, Scotland.

HONOLULU SCRAP IRON CO.
C. H. BROWN, Manager.
Halekuanui Street.
Highest Price Paid for Old Brass, Scrap Iron and all Metals.
Dealer in Second-hand Machinery.
Tel. 1642. P. O. Box 541.

FOR GOOD INVESTMENTS in REAL ESTATE
apply
MAGOON BROS.
Room 1 Magoon Building.

Distilled Water Ice
For Ice, Distilled Water and Cold Storage, consult the
Oahu Ice & Electric Co.
Box 600. Phone 1188.

Fine Wines and Liquors
LOVEJOY & CO.
302 NUUANU STREET.
TELEPHONE 2708.

Woodlawn
Manoa Valley
See CHAS. S. DESKY

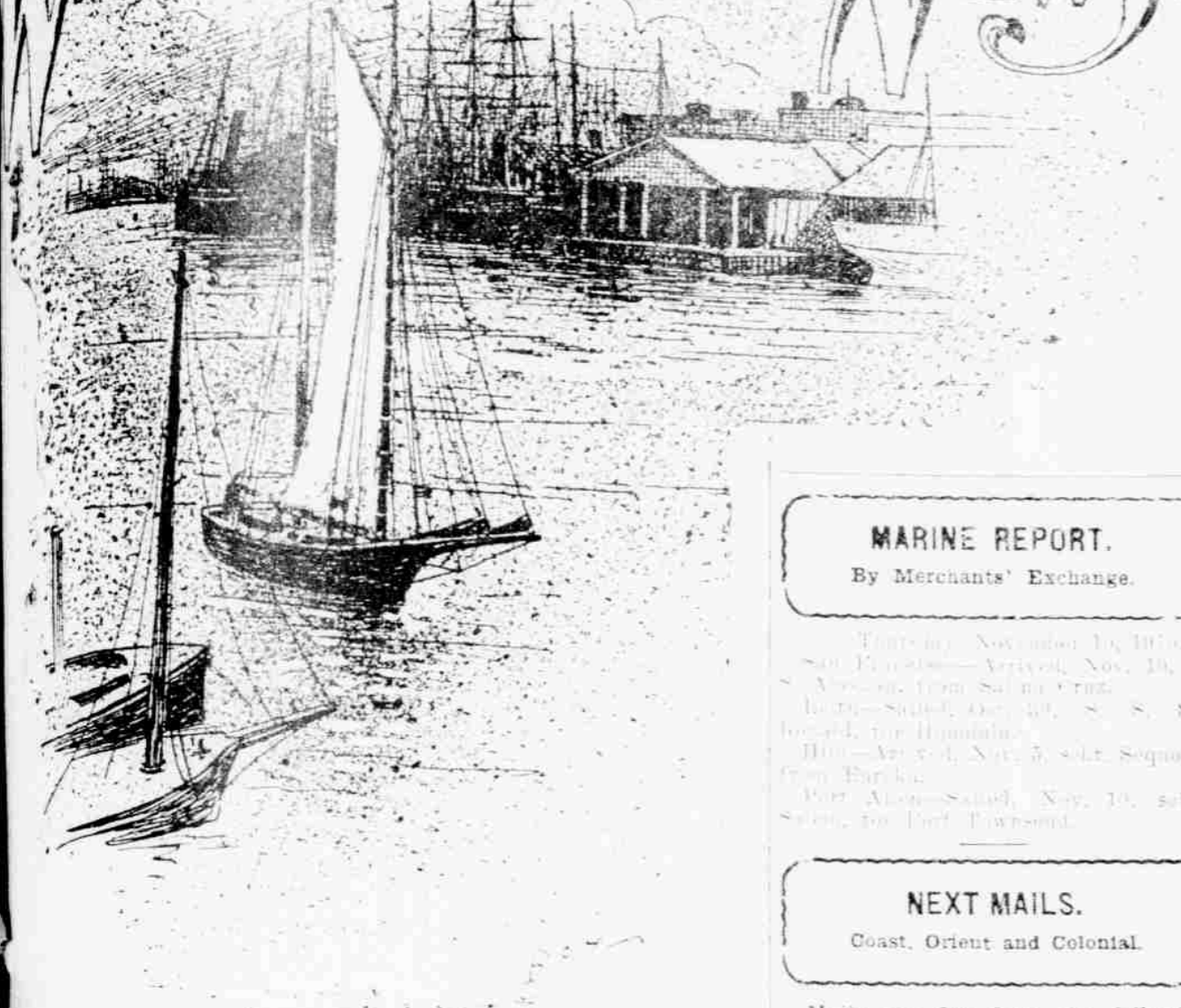
I have received another shipment of dress skirts in white, blue and white serge. Also a new line of lingerie dresses and accessories.
MRS. F. S. ZEAVE
Room 2704 Young Bldg.

HAWAIIAN DEVELOPMENT CO.
Limited.
STANGENWALD BUILDING
F. B. McSTOCKER, Manager.
P. O. Box No. 275. Cable: Develco.

This Paper
is kept on file at THE DAILY ADVERTISING AGENCY, INC., 427 South Main Street, Honolulu, and 12 Great Street, San Francisco, where contracts for advertising can be made for it.

READ THE ADVERTISER, WORLD'S NEWS DAILY.

WATERFRONT NEWS



CHINESE CRUISERS DEPART TOMORROW

Training Squadron Goes Direct to San Francisco and Then South.

The Japanese training squadron, consisting of the cruisers Asama and Kasuga, will depart tomorrow morning for San Francisco, remaining there a few days before resuming their voyage westward to Mexico and South America.

LOCAL OFFICE OF THE UNITED STATES WEATHER BUREAU

Thursday, November 10, 1910.

THUNDER	WIND	TEMPERATURE	RELATIVE HUMIDITY	WIND DIRECTION	WIND VELOCITY
0.0	0.0	72.0	75.0	0.0	0.0
0.0	0.0	71.0	74.0	0.0	0.0
0.0	0.0	70.0	73.0	0.0	0.0
0.0	0.0	69.0	72.0	0.0	0.0
0.0	0.0	68.0	71.0	0.0	0.0
0.0	0.0	67.0	70.0	0.0	0.0
0.0	0.0	66.0	69.0	0.0	0.0
0.0	0.0	65.0	68.0	0.0	0.0
0.0	0.0	64.0	67.0	0.0	0.0
0.0	0.0	63.0	66.0	0.0	0.0
0.0	0.0	62.0	65.0	0.0	0.0
0.0	0.0	61.0	64.0	0.0	0.0
0.0	0.0	60.0	63.0	0.0	0.0
0.0	0.0	59.0	62.0	0.0	0.0
0.0	0.0	58.0	61.0	0.0	0.0
0.0	0.0	57.0	60.0	0.0	0.0
0.0	0.0	56.0	59.0	0.0	0.0
0.0	0.0	55.0	58.0	0.0	0.0
0.0	0.0	54.0	57.0	0.0	0.0
0.0	0.0	53.0	56.0	0.0	0.0
0.0	0.0	52.0	55.0	0.0	0.0
0.0	0.0	51.0	54.0	0.0	0.0
0.0	0.0	50.0	53.0	0.0	0.0
0.0	0.0	49.0	52.0	0.0	0.0
0.0	0.0	48.0	51.0	0.0	0.0
0.0	0.0	47.0	50.0	0.0	0.0
0.0	0.0	46.0	49.0	0.0	0.0
0.0	0.0	45.0	48.0	0.0	0.0
0.0	0.0	44.0	47.0	0.0	0.0
0.0	0.0	43.0	46.0	0.0	0.0
0.0	0.0	42.0	45.0	0.0	0.0
0.0	0.0	41.0	44.0	0.0	0.0
0.0	0.0	40.0	43.0	0.0	0.0
0.0	0.0	39.0	42.0	0.0	0.0
0.0	0.0	38.0	41.0	0.0	0.0
0.0	0.0	37.0	40.0	0.0	0.0
0.0	0.0	36.0	39.0	0.0	0.0
0.0	0.0	35.0	38.0	0.0	0.0
0.0	0.0	34.0	37.0	0.0	0.0
0.0	0.0	33.0	36.0	0.0	0.0
0.0	0.0	32.0	35.0	0.0	0.0
0.0	0.0	31.0	34.0	0.0	0.0
0.0	0.0	30.0	33.0	0.0	0.0
0.0	0.0	29.0	32.0	0.0	0.0
0.0	0.0	28.0	31.0	0.0	0.0
0.0	0.0	27.0	30.0	0.0	0.0
0.0	0.0	26.0	29.0	0.0	0.0
0.0	0.0	25.0	28.0	0.0	0.0
0.0	0.0	24.0	27.0	0.0	0.0
0.0	0.0	23.0	26.0	0.0	0.0
0.0	0.0	22.0	25.0	0.0	0.0
0.0	0.0	21.0	24.0	0.0	0.0
0.0	0.0	20.0	23.0	0.0	0.0
0.0	0.0	19.0	22.0	0.0	0.0
0.0	0.0	18.0	21.0	0.0	0.0
0.0	0.0	17.0	20.0	0.0	0.0
0.0	0.0	16.0	19.0	0.0	0.0
0.0	0.0	15.0	18.0	0.0	0.0
0.0	0.0	14.0	17.0	0.0	0.0
0.0	0.0	13.0	16.0	0.0	0.0
0.0	0.0	12.0	15.0	0.0	0.0
0.0	0.0	11.0	14.0	0.0	0.0
0.0	0.0	10.0	13.0	0.0	0.0
0.0	0.0	9.0	12.0	0.0	0.0
0.0	0.0	8.0	11.0	0.0	0.0
0.0	0.0	7.0	10.0	0.0	0.0
0.0	0.0	6.0	9.0	0.0	0.0
0.0	0.0	5.0	8.0	0.0	0.0
0.0	0.0	4.0	7.0	0.0	0.0
0.0	0.0	3.0	6.0	0.0	0.0
0.0	0.0	2.0	5.0	0.0	0.0
0.0	0.0	1.0	4.0	0.0	0.0
0.0	0.0	0.0	3.0	0.0	0.0
0.0	0.0	0.0	2.0	0.0	0.0
0.0	0.0	0.0	1.0	0.0	0.0
0.0	0.0	0.0	0.0	0.0	0.0

METEOROLOGICAL RECORD.

Read Every Sunday Morning by the Local Office U. S. Weather Bureau.

THUNDER	WIND	TEMPERATURE	RELATIVE HUMIDITY	WIND DIRECTION	WIND VELOCITY
0.0	0.0	72.0	75.0	0.0	0.0
0.0	0.0	71.0	74.0	0.0	0.0
0.0	0.0	70.0	73.0	0.0	0.0
0.0	0.0	69.0	72.0	0.0	0.0
0.0	0.0	68.0	71.0	0.0	0.0
0.0	0.0	67.0	70.0	0.0	0.0
0.0	0.0	66.0	69.0	0.0	0.0
0.0	0.0	65.0	68.0	0.0	0.0
0.0	0.0	64.0	67.0	0.0	0.0
0.0	0.0	63.0	66.0	0.0	0.0
0.0	0.0	62.0	65.0	0.0	0.0
0.0	0.0	61.0	64.0	0.0	0.0
0.0	0.0	60.0	63.0	0.0	0.0
0.0	0.0	59.0	62.0	0.0	0.0
0.0	0.0	58.0	61.0	0.0	0.0
0.0	0.0	57.0	60.0	0.0	0.0
0.0	0.0	56.0	59.0	0.0	0.0
0.0	0.0	55.0	58.0	0.0	0.0
0.0	0.0	54.0	57.0	0.0	0.0
0.0	0.0	53.0	56.0	0.0	0.0
0.0	0.0	52.0	55.0	0.0	0.0
0.0	0.0	51.0	54.0	0.0	0.0
0.0	0.0	50.0	53.0	0.0	0.0
0.0	0.0	49.0	52.0	0.0	0.0
0.0	0.0	48.0	51.0	0.0	0.0
0.0	0.0	47.0	50.0	0.0	0.0
0.0	0.0	46.0	49.0	0.0	0.0
0.0	0.0	45.0	48.0	0.0	0.0
0.0	0.0	44.0	47.0	0.0	0.0
0.0	0.0	43.0	46.0	0.0	0.0
0.0	0.0	42.0	45.0	0.0	0.0
0.0	0.0	41.0	44.0	0.0	0.0
0.0	0.0	40.0	43.0	0.0	0.0
0.0	0.0	39.0	42.0	0.0	0.0
0.0	0.0	38.0	41.0	0.0	0.0
0.0	0.0	37.0	40.0	0.0	0.0
0.0	0.0	36.0	39.0	0.0	0.0
0.0	0.0	35.0	38.0	0.0	0.0
0.0	0.0	34.0	37.0	0.0	0.0
0.0	0.0	33.0	36.0	0.0	0.0
0.0	0.0	32.0	35.0	0.0	0.0
0.0	0.0	31.0	34.0	0.0	0.0
0.0	0.0	30.0	33.0	0.0	0.0
0.0	0.0	29.0	32.0	0.0	0.0
0.0	0.0	28.0	31.0	0.0	0.0
0.0	0.0	27.0	30.0	0.0	0.0
0.0	0.0	26.0	29.0	0.0	0.0
0.0	0.0	25.0	28.0	0.0	0.0
0.0	0.0	24.0	27.0	0.0	0.0
0.0	0.0	23.0	26.0	0.0	0.0
0.0	0.0	22.0	25.0	0.0	0.0
0.0	0.0	21.0	24.0	0.0	0.0
0.0	0.0	20.0	23.0	0.0	0.0
0.0	0.0	19.0	22.0	0.0	0.0
0.0	0.0	18.0	21.0	0.0	0.0
0.0	0.0	17.0	20.0	0.0	0.0
0.0	0.0	16.0	19.0	0.0	0.0
0.0	0.0	15.0	18.0	0.0	0.0
0.0	0.0	14.0	17.0	0.0	0.0
0.0	0.0	13.0	16.0	0.0	0.0
0.0	0.0	12.0	15.0	0.0	0.0
0.0	0.0	11.0	14.0	0.0	0.0
0.0	0.0	10.0	13.0	0.0	0.0
0.0	0.0	9.0	12.0	0.0	0.0
0.0	0.0	8.0	11.0	0.0	0.0
0.0	0.0	7.0	10.0	0.0	0.0
0.0	0.0	6.0	9.0	0.0	0.0
0.0	0.0	5.0	8.0	0.0	0.0
0.0	0.0	4.0	7.0	0.0	0.0
0.0	0.0	3.0	6.0	0.0	0.0
0.0	0.0	2.0	5.0	0.0	0.0
0.0	0.0	1.0	4.0	0.0	0.0
0.0	0.0	0.0	3.0	0.0	0.0
0.0	0.0	0.0	2.0	0.0	0.0
0.0	0.0	0.0	1.0	0.0	0.0
0.0	0.0	0.0	0.0	0.0	0.0

TIDES, SUN AND MOON.

DATE	TIME	HEIGHT	LOW	MOON
Nov 11	12:00	1.5	0.5	0.0
Nov 11	12:30	1.5	0.5	0.0
Nov 11	13:00	1.5	0.5	0.0
Nov 11	13:30	1.5	0.5	0.0
Nov 11	14:00	1.5	0.5	0.0
Nov 11	14:30	1.5	0.5	0.0
Nov 11	15:00	1.5	0.5	0.0
Nov 11	15:30	1.5	0.5	0.0
Nov 11	16:00	1.5	0.5	0.0
Nov 11	16:30	1.5	0.5	0.0
Nov 11	17:00	1.5	0.5	0.0
Nov 11	17:30	1.5	0.5	0.0
Nov 11	18:00	1.5	0.5	0.0
Nov 11	18:30	1.5	0.5	0.0
Nov 11	19:00	1.5	0.5	0.0
Nov 11	19:30	1.5	0.5	0.0
Nov 11	20:00	1.5	0.5	0.0
Nov 11	20:30	1.5	0.5	0.0
Nov 11	21:00	1.5	0.5	0.0
Nov 11	21:30	1.5	0.5	0.0
Nov 11	22:00	1.5	0.5	0.0
Nov 11	22:30	1.5	0.5	0.0
Nov 11	23:00	1.5	0.5	0.0
Nov 11	23:30	1.5	0.5	0.0
Nov 12	00:00	1.5	0.5	0.0
Nov 12	00:30	1.5	0.5	0.0
Nov 12	01:00	1.5	0.5	0.0
Nov 12	01:30	1.5	0.5	0.0
Nov 12	02:00	1.5	0.5	0.0
Nov 12	02:30	1.5	0.5	0.0
Nov 12	03:00	1.5	0.5	0.0
Nov 12	03:30	1.5	0.5	0.0
Nov 12	04:00	1.5	0.5	0.0
Nov 12	04:30	1.5	0.5	0.0
Nov 12	05:00	1.5	0.5	0.0
Nov 12	05:30			

Fraternal Meetings

POLYNESIAN ENCAMPMENT NO. 1, I. O. O. F. Meets every first and third Friday of the month...

MANY BEQUESTS IN CLEGHORN WILL

Charitable Institutions Are Not Forgotten by One Time Governor.

The Hon. J. K. Kaula, Governor of the Territory, has left a will which provides for the support of various charitable institutions...

The Hon. J. K. Kaula's will provides for the support of various charitable institutions, including the Hawaiian Home for Girls and the Hawaiian Home for the Deaf...

The Hon. J. K. Kaula's will provides for the support of various charitable institutions, including the Hawaiian Home for Girls and the Hawaiian Home for the Deaf...

The Hon. J. K. Kaula's will provides for the support of various charitable institutions, including the Hawaiian Home for Girls and the Hawaiian Home for the Deaf...

Fraternal Meetings

HONOLULU LODGE NO. 492, F. & A. M. Meets every second and fourth Saturday evening...

At Auction, November 12, 1910. Valuable Leaseholds, Waikiki. Realty Auction Co., Ltd.

PREPARING FOR THE GREAT WORLD TOUR

British Chorus, Which Will Sing Here, Already Active in Rehearsal.

The chorus, which will sing here, is already active in rehearsal. The chorus consists of twenty-five members...

CHIEF JUSTICE IS MOST SURELY BARRED

By a majority of seven, the Chief Justice is barred from participating in the Hawaiian Home for the Deaf...

WHITEFACE BULLS BOUGHT FOR HAWAIIAN RANCH

Atchison, Kansas, October 27.—John & James, big cattlemen from the Hawaiian Islands, and their friends...

Jas. W. Pratt REAL ESTATE, INSURANCE LOANS NEGOTIATED

City Auction Co. 125 Merchant St. THIS DAY AT AUCTION

Friday, November 11, 1910. At our salesroom, 125 Merchant Street.

JAS. W. PRATT, AUCTIONEER. 50 Mares For Sale or Lease

For Rent. A very desirable cottage, centrally located, with all modern conveniences...

Jas. F. Morgan STOCKS, BONDS AND REAL ESTATE REALTY AUCTIONEER No. 857 Kaahumanu St.

PUUNUI. Two large lots and a home. \$1500.00.

Also a few choice lots at low prices. A fine lot on Prospect street.

A house and lot for \$2000.00. Lot corner Wilder and Keau-moku streets. \$3000.00.

The best bargain in Kaimuki, 5 lots, cleared and fenced, near carline. \$1500.00.

House For Rent, King and McCully. \$30.00. If you want an Oriental Rug, call at our office, as we have a few left.

JAS. F. MORGAN CASTLE & COOKE, Ltd. SHIPPING AND COMMISSION MERCHANTS.

SUGAR FACTORS AND GENERAL INSURANCE AGENTS. REPRESENTING New England Mutual Life Insurance Company of Boston.

Actna Fire Insurance Company, Citizens' Fire Insurance Company (Hartford Fire Insurance Company), London Assurance Corporation.

Select Lumber DIRECT IMPORTATION LOWEST PRICES CITY MILL CO., LTD. Phone 2478 KEEKAULIKE STREET

ORIENTAL GEMS In beautiful! Jewelry bits BO WO Hotel St. bet. Maunakea and Smith

Renear Co., Ltd. ALGAROBA BEAN MILLS WONDERFUL CURIOSITIES AT ANCHOR SALOON Standing Room Only Admission Free.

GEORGE A. MARTIN Fashionable Tailor MASSAGE THERAPY

Rubber Goods GOODYEAR RUBBER CO. H. H. THOMAS, President

READ THE ADVERTISER. WORLD'S NEWS DAILY

BREAD All varieties of Fresh Bread and Plain Crackers manufactured daily at our Bakery, 1134 Nuuanu Street.

Love's Bakery 1134 Nuuanu Street

The Yokohama Specie Bank, Ltd. Capital (Paid up).....Yen 20,000,000 Reserve Fund.....Yen 10,000,000

HEAD OFFICE YOKOHAMA. The bank buys and receives for collection bills of exchange, issues Drafts and Letters of Credit, and transacts a general banking business.

Local Deposits \$25 and upwards for one year at rate of 4 per cent per annum. Head Office Deposits Yen 25 and upwards for one-half year, one year, two years or three years at rate of 4 1/2 per cent per annum.

Particulars to be obtained on application. Honolulu Office—Bethel and Merchant Streets. YU AKAI, Manager P. O. Box 168.

The Star Dyeing and Cleaning Shop 221 Beretania Street, near Alahua. Telephone 1182. MAKAI SIDE OF STREET

C. L. HOPKINS Systematizer Notary Public Agent Grant Marriage License Hawaiian Interpreter and Translator Office: Judiciary Bldg. Hours 9 a.m. to 4 p.m.

AN OUNCE OF PREVENTION. If you want to stop your hair from falling and restore it to its youthful appearance, you must use

PACHECO'S DANDRUFF KIDNEY BLOOD TONIC Keeps Stock Well

M. J. POTTIE'S STOCK REMEDY CO. Hotel and Union. H. M. AYRES, Manager.

JOHN NEILL ENGINEER. 135 Merchant Street. Machinery Repaired. Ship and General Blacksmithing. GASOLINE ENGINE.

1911 OAT & MOSSMAN Have a fine new stock of 1911 DIARIES. Call and see them and make a choice.

HATS That Look Right and Wear Right! ROMAN & FRIETAS HAT COMPANY. OPP. CLUB STABLES.

AUTO-LIVERY PHONE 1326

Apartments, Cuisine and Service Highest Standard PLEASANTON HOTEL Wilder Ave. and Punahoa.

POPULAR HOTELS IN JAPAN. MIYAKO HOTEL.....KYOYO NABA HOTEL Nara near Kyoto GONIKAI HOTEL.....Kobe

Fire Insurance THE E. P. DILLINGHAM CO. LTD. General Agents for Hawaii: Atlas Assurance Company of London New York Underwriters Agency, Providence Washington Insurance Company.

