

If you want to-day's News, to-day you can find it in THE STAR

# THE HAWAIIAN STAR

For Best War News, Read The Star

SECOND EDITION

VOL. XI.

HONOLULU, H. T., THURSDAY, FEBRUARY 11, 1904.

No. 3710

# Russian Loses Are Severe

Associated Press Cable to the Star.

TOKIO, Feb. 11.—It is reported here that the Russian cruiser Varyag was blown up by her own captain near Chemulpo. She is said to have been badly damaged and blown up in preference to surrendering and allowing her to fall into possession of the Japanese.

Associated Press Cable to the Star.

LONDON, Feb. 11.—A Reuter's cable from Tokio says that four Russian battleships and three cruisers were sunk and two Japanese warships were damaged in the engagement at Port Arthur.

Special Cable Marine Exchange.

TOKIO, Feb. 11.—The Japanese naval forces have inflicted a severe blow on the enemy. Details of the naval engagement at Port Arthur which started on Monday night by an attack by the Japanese torpedo boats show the damage inflicted on the Russians to have been very great.

Details now at hand show that three Russian battleships—the Retvizan, Casearvitch and Peresviet—and four cruisers were badly damaged in the attack from the Japanese fleet. Another cruiser, the Pallada, was beached. Full details of the extent of the damage to these vessels are not at present known. It is thought that practically all of these boats were put out of commission by the Japanese forces. The battle appears to have lasted Monday night and to have been continued on Tuesday. The Japanese vessels were uninjured. The sinking of the two Russian vessels off Chemulpo has been again confirmed.

Special Cable Marine Exchange.

ST. PETERSBURG, Feb. 11.—News has been received here of the blowing up of an important bridge on the Siberian railroad. It is believed to be the work of Japanese introduced into the country in the guise of coolies and travelers, as was the blowing up of the bridge on the Manchurian railroad reported yesterday. The effect of this will be to greatly cripple the road as a means of communication and source of supplies.

## THE FORCE IN KOREA

Associated Press Cable to the Star.

PARIS, Feb. 11.—A force of 5,000 Japanese is now reported to be near Seoul.

Special Cable Marine Exchange.

TOKIO, Feb. 11.—The Japanese invading forces have seized Masampho and the army of invasion for the southern part of Korea has been landed. The troops are now being rushed northward in order to unite with the other army which captured Chemulpo and advanced on Seoul yesterday. A union of these forces will, it is expected, be effected today, and an advance northward against the forces of the Russians will be made immediately. A battle is expected at any moment, however, as the Russians are believed to have thrown large forces across the Yalu river to oppose the invasion of Manchuria and the investment of Port Arthur.

## ENGLAND NEUTRAL

Associated Press Cable to the Star.

LONDON, Feb. 11.—King Edward today signed a proclamation of neutrality in the Russo-Japanese war.

### REIGNING BARGAINS.

Don't mind the rain while such bargains reign at Sachs' Dry Goods Co. The big sale of Blankets, Comforters, Counterpanes and Towels is now on for this week only. Don't miss it.

Want ads in the Star bring quick results. Three lines three times for 25 cents.

He that is Surety for a Stranger shall be wiser the Next time. Addison Mimer.

The Pacific Surety Company will become Sole Surety on All Bonds.

### If You Want a Bond

- As Executor, Trustee, Administrator,
- Guardian, Receiver, Assignee, or in
- Attachment Cases, etc.
- As an Officer or Employee of a Bank
- or other Corporation.
- As an Employee of a Mercantile Establishment.
- As an Officer of a Fraternal Society.
- As a Public Official.

HAWAIIAN TRUST CO., LTD.,  
General Agents,  
WILL FURNISH IT.

Don't give or accept personal surety.  
923 Fort street. Tel. Main 184.

### NEW QUARTERS.

A. B. Arleigh & Co., stationers, are now at the corner of Hotel and Fort, formerly Lyon's Book Store

Prepare for Croup.—The time wasted in sending for a physician when a child shows symptoms of the croup, often leads to fatal results. A reliable medicine and one that should always be kept in the home ready for immediate use is Chamberlain's Cough Remedy. It never fails and will prevent the attack if given as soon as the child becomes hoarse, or even after the croupy cough appears. For sale by all dealers. Benson Smith & Co., agents for Hawaii.



Spratt's

DOG CAKES,  
PUPPY BISCUITS, AND  
MEDICINES.  
COLLARS, LOCKS AND CHAINS.

PEARSON & POTTER CO., LTD  
951 FORT STREET.

## The Baltic Fleet On Way To Far East

RUSSIA SENDING REINFORCEMENTS TO THE SCENE OF WARFARE WITH JAPAN—A FLEET OF FIFTEEN RUSSIAN WARSHIPS PASSES KAISER WILHELM CANAL EN ROUTE TO ENTER THE WAR.

Associated Press Cable to the Star.

BERLIN, Feb. 11.—The Russian Baltic fleet of fifteen vessels has passed through Kaiser Wilhelm canal bound for the Orient.

Special Cable Marine Exchange.

ST. PETERSBURG, Feb. 11.—Realizing the grave situation in the Far East the Russian government today dispatched 15 warships to reinforce the Russian naval forces in Asiatic waters. This fleet was made up of vessels from the Baltic squadron and is a powerful aggregation of fighting machines. It is understood that three or four battleships are in the fleet, as are several torpedo boats.

The government now realizes that the Japanese are in deadly earnest and that reinforcements must be rushed without any delay to the aid of Viceroy Alexieff before the Japanese destroy all of the fleet now in Asiatic waters. That the gravity of the situation is realized fully here is shown by the fact that so many vessels are being withdrawn from the home station for service in the Far East.

## THE EXTRA STAR

The Extra Star this morning giving the news of stirring events in the Far East, and anticipating in great part, the regular cable service, was highly appreciated by the public. The cablegrams were of new events and were full enough to give satisfactory information concerning them. The service given by the Marine Exchange was excellent. Compliments have been showering in on The Star for its enterprise ever since the Extra made its appearance on the streets. The public always looks to The Star for the news of important events.

## JAPAN DECLARES WAR.

Associated Press Cable to the Star.

TOKIO, Feb. 11.—The Emperor has made a formal declaration of war against Russia.

## ROOSEVELT SIGNS PROCLAMATION.

Associated Press Cable to the Star.

WASHINGTON, D. C., Feb. 11.—President Roosevelt today signed the proclamation proclaiming the neutrality of the United States in the war between Japan and Russia.

## JAP NAVY RULES SEA

The special cables from San Francisco published in the Star's Extra today show that the Japanese naval forces gained a much greater victory over Russians at Port Arthur than had been first reported. Three battleships, instead of two, and five cruisers instead of only one, have been badly damaged by the Japanese forces. This news shows that the Japanese have succeeded in putting no less than ten of the Russian vessels out of commission, two more having been sunk off Chemulpo. This reduces the Russian fleet in the Far East by almost one-third in actual vessels and considerably more than a third in point of tonnage.

Russia had 8 battleships, 12 cruisers and 11 gunboats in commission when hostilities began. Three of her battleships, six cruisers and one gunboat are gone, so far as effectual work is concerned. Japan will now have a much easier task and she will be able, if necessary, to detach several of the vessels off Port Arthur if it be found necessary. The probabilities are that by the time the reinforcements of 15 warships from St. Petersburg reach Asiatic waters the Japanese will have disposed of the Russians now at Port Arthur and be ready to gobble up the new fleet.

## LOSSES ON BOTH SIDES

Associated Press Cable to the Star.

PARIS, Feb. 11.—It is reported that a force of Japanese attempted to land at Port Arthur for the purpose of beginning an investment of that place, but were repulsed.

## KOREA AS THE SANDWICH MAN

The people of Korea are not Japanese, and they are not Chinese. They are Mongolian, and have a polysyllabic language with a phonetic alphabet. They have a recorded history, of disputed authenticity, which claims for them a continuous existence as a Korean people of about five thousand years, the earlier part of which, of course, is shrouded in the mists of tradition and fable. As early as three centuries ago, the

## RUSSIAN JAPANESE FIGHT NEAR MASAMPHO UNLIKELY

NO RUSSIANS WERE REPORTED TO BE IN THAT SECTION OF KOREA—THOUGHT RUSSIAN ARMY IS WAITING TO GIVE BATTLE ALONG YALU RIVER—JAPS MUST BEGIN INVESTMENT OF PORT ARTHUR.

The report of the seizure of Masampho by the Japanese and the successful landing of an army of invasion is very probable, but the additional report of the likelihood of an immediate battle is hardly borne out by military conditions. Masampho is at the southernmost extremity of the peninsula and is about 200 miles distant from Seoul and Chemulpo. There is no railroad from Masampho to Seoul and in order to unite with the forces of the first army of invasion that was landed February 9 at Chemulpo, the Masampho forces would have to make a march that will occupy eight days at least. Just why an invading force should have been sent to make such a long march when the transports could have easily landed the soldiers at Chemulpo, is not clear. Masampho would of course have to be held as a possible base of supplies, as it is the nearest point of concentration to Japan, but as for using that place as the distributing base for the land operations in Korea, such a policy during the early stage of the war, is unlikely.

The report that a battle was imminent is not warranted by the general conditions. There is no force of the enemy in that section of Korea with whom a battle could be fought. The latest mail advices from Japan and Korea stated that there were no Russians in that section of Korea. There is little likelihood that the Russians would have ventured very far from the Yalu river district into Korea, when the prospects of war became so certain. There is positive that no Russians were sent south of Seoul. They would readily have realized that the Japanese would have attacked them from either side of the peninsula and broken the Russian line of communications and hemmed in whatever force of Russians there was, and forced them to surrender. The further fact that the Russian fleet was at Port Arthur and making no effort to prevent a landing of the Japanese forces in Korea is another circumstance that goes to prove that Korea is free from Russian forces in the southern part.

The battle that is likely to ensue will occur along the Yalu river where the Russians have established fortifications and have been placing their soldiers in their timber "concessions."

The report of a repulse of a landing party of Japanese at Port Arthur is very likely. The Japanese must invest that place as soon as possible. They will then have the Russian fleet in exactly the same position that Admiral Sampson and General Shafter had the Spanish fleet at Santiago.

## BREAKS RECORDS

The rainfall of the present storm is believed to be the largest ever recorded here for a single storm. Professor Lydecker, of the weather bureau, states that he is unable to find any record of a storm with equal rainfall. Since the beginning last Saturday afternoon there have been over 18 inches of rain.

The rainfall for the storm up to 9 a. m. this morning was 17.75 inches. The last twenty-four hours were about the heaviest of all, the rainfall from 9 a. m. yesterday to 9 a. m. today having been 7.51 inches.

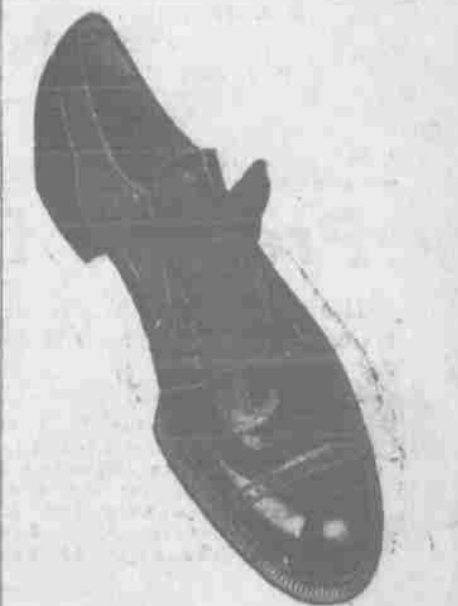
### PIONEER BUILDING & LOAN ASSN

The Pioneer Building and Loan Association of Hawaii pays its withdrawing members at the end of six months or a year not only the cash paid in by them, but Seventy-five (75%) per cent of the profits.

It retains Twenty-five (25%) per cent of the profits for the benefit of the Stockholders remaining.

The Twenty-seventh Series of Stock is now open for subscription. ONE DOLLAR per month per share. A. V. Gear, Secretary, 122 King Street.

Twenty-five cents pays for a Want ad in the Star. A bargain.



Price, \$4.50

Heywood vic blueher oxford. A combination of style and service—the best for the money.

Island orders filled promptly.

MANUFACTURERS' SHOE CO., LTD  
1081 Fort Street

### THE OLD RELIABLE

ROYAL BAKING POWDER  
Absolutely Pure  
THERE IS NO SUBSTITUTE

(Continued on page 6.)

# Oceanic Steamship Company.

## TIME TABLE

The fine Passenger Steamers of this line will arrive at and leave as hereunder:

FROM SAN FRANCISCO.		FOR SAN FRANCISCO.	
BONOMA	JANUARY 27	VENTURA	JANUARY 26
*ALAMEDA	FEBRUARY 6	*ALAMEDA	FEBRUARY 10
VENTURA	FEBRUARY 17	SIERRA	FEBRUARY 18
*ALAMEDA	FEBRUARY 26	*ALAMEDA	MARCH 2
SIERRA	MARCH 9	SONOMA	MARCH 8
*ALAMEDA	MARCH 18	*ALAMEDA	MARCH 23
BONOMA	MARCH 30	VENTURA	MARCH 29
*ALAMEDA	APRIL 8	*ALAMEDA	APRIL 13
VENTURA	APRIL 20	SIERRA	APRIL 15
*ALAMEDA	APRIL 29	SONOMA	MAY 4
SIERRA	MAY 11	*ALAMEDA	MAY 25
*ALAMEDA	MAY 20	VENTURA	MAY 21
BONOMA	JUNE 1	*ALAMEDA	JUNE 15
*ALAMEDA	JUNE 10	SIERRA	JUNE 15
VENTURA	JUNE 22	*ALAMEDA	JUNE 21
*ALAMEDA	JULY 1	*ALAMEDA	JULY 6

\* Local boat.

In connection with the sailing of the above steamers, the Agents are prepared to issue to intending passengers coupon through tickets by any railroad from San Francisco to all points in the United States, and from New York by Steamship line to all European Ports. For further particulars apply to

## W. G. Irwin & Co.

General Agents Oceanic S. S. Company.

## Canadian-Australian Royal Mail STEAMSHIP COMPANY

Steamers of the above line, running in connection with the C. NADIAN-OCEANIC RAILWAY COMPANY between Vancouver, B. C., and Sydney, N. S. W., and calling at Victoria, B. C., Honolulu and Brisbane, Q.

Due at Honolulu on or about the dates below stated, viz:	
FOR AUSTRALIA.	FOR VANCOUVER.
AORANGI.....FEB. 13	MIOWERA.....FEB. 17
MIOWERA.....MAR. 12	MOANA.....MAR. 16
MOANA.....APRIL 9	AORANGI.....APRIL 6
AORANGI.....MAY 7	MIOWERA.....MAY 4
MIOWERA.....JUNE 4	MOANA.....JUNE 1
MOANA.....JULY 2	AORANGI.....JUNE 29
AORANGI.....JULY 20	MIOWERA.....JULY 27
MIOWERA.....AUG. 27	MOANA.....AUG. 24
MOANA.....SEPT. 24	AORANGI.....SEPT. 21
AORANGI.....OCT. 22	MIOWERA.....OCT. 19
MIOWERA.....NOV. 19	MOANA.....NOV. 16
MOANA.....DEC. 17	AORANGI.....DEC. 14

CALLING AT SUVA, FIJI, ON BOTH UP AND DOWN VOYAGES.

## THEO. H. DAVIES & CO., Ltd., Gen'l Agts.

## Pacific Mail Steamship Co. Occidental & Oriental S. S. Co. and Toyo Kisen Kaisha.

Steamers of the above Companies will call at Honolulu and leave this port on or about the dates below mentioned:

FOR CHINA AND JAPAN.		FOR SAN FRANCISCO.	
AMERICA MARU.....FEB. 1	GAELEIC.....JAN. 23	HONGKONG MARU.....JAN. 29	CHINA.....FEB. 9
KOREA.....FEB. 9	DORIC.....FEB. 19	HONGKONG MARU.....FEB. 17	NIPPON MARU.....FEB. 27
GAELEIC.....FEB. 17			
HONGKONG MARU.....FEB. 24			

## H. Hackfeld & Co.

AMERICAN HAWAIIAN STEAMSHIP COMPANY.

DIRECT MONTHLY SERVICE BETWEEN NEW YORK AND HONOLULU, VIA PACIFIC COAST.

FROM NEW YORK.	
S. S. CALIFORNIAN, to sail about February 18.	
S. S. ARIZONAN, to sail about March ..	
Freight received at Company's wharf 41st Street, South Brooklyn, at all times.	
FROM SAN FRANCISCO TO HONOLULU.	
S. S. NEVADAN, to sail direct February 18.	
S. S. NEVADAN, to sail direct March 18.	
and each month thereafter.	
Freight received at Company's wharf, Greenwich Street.	
FROM HONOLULU TO SAN FRANCISCO, VIA KAHULUI.	
S. S. NEVADAN, to sail January 27.	
FROM SEATTLE AND TACOMA:	
S. S. TEXAN, to sail about February 25.	

H. Hackfeld & Co., AGENTS. E. F. MORSE, General Freight Agent.

## Prepare for Winter!

If other paints don't stop the leak, ours will. The Peerless Preserving Paint is guaranteed to do the work and to give absolute satisfaction.

Proofs of which are found at the following buildings: Alexander Young Building, Colusa Building, Honolulu Brewing Building, O. Brewer & Co.'s Building, Stangenwald Building, New Morgue Building And Many Others

We Handle Felt, Pitch and Gravel Roofs

For Further Particulars Apply to Peerless Preserving Paint Co. No. 30 Queen Street

25c. Pays for a Want Ad in The Star A BARGAIN

## SHIPPING INTELLIGENCE

(For additional and later shipping see pages 4, 5, or 8.)

### TIDES, SUN AND MOON.

New Moon on the 16th at 0.33 a. m.

Date	High Tide	Low Tide	High Tide	Low Tide	Sun Rises	Sun Sets	Moon Rises	Moon Sets
Feb. 11	10.40	1.2	8.36	3.05	6.34	5.58	12.30	
12	11.44	1.5	9.38	4.00	6.34	5.58	1.15	
13	12.02	1.8	10.00	4.57	6.33	5.56	2.06	
14	1.37	1.7	12.24	5.56	7.34	6.33	2.59	
15	1.23	1.7	1.22	6.48	8.32	6.32	3.47	
16	2.00	1.8	2.05	7.35	9.02	6.32	4.33	
17	2.35	1.8	2.45	8.16	9.30	6.31	5.16	
18	3.05	1.8	3.25	8.54	9.52	6.30	5.56	

Times of the tide are taken from the U. S. Coast and Geodetic Survey tables. The tides at Honolulu and Hilo occur about one hour earlier than at Honolulu. Hawaiian standard time is 10 hours 30 minutes slower than Greenwich time, being that of the meridian of 157 degrees 30 minutes. The time whistle blows at 1:30 p. m., which is the same as Greenwich, 3 hours, 0 minutes. The Sun and moon are for local time for the whole group.

DEPARTING. Thursday, February 11. U. S. A. T. Sheridan, Peabody, for Guam and Manila at 7 a. m. Strm. Noeuan, Pederson, for Maui and Hamakua ports at 5 p. m. Strm. Watalele, Piltz, for all Kauai ports at 5 p. m.

PASSENGERS. Departing. Per strm. Mikahala, February 9, for Kauai ports—C. V. Sturtevant, wife and Miss Sturtevant, U. Sekomoto, Kawahala, Paul Jarrett, T. Loy Shun, Chun Yuen, Ah Shun.

## STORM BECOMING DISASTROUS

(Continued from Page 5.)

One of the walls at Chris Holt's place carried away in the first storm. During last night the wall in the other side fell and was washed down the stream. The channel broadened until it took in three large trees, washed up their roots and they fell across the stream. They formed an obstruction against which all sorts of other obstructions gathered, damming the water above them, and there were hurry calls on the road supervisor to remove the trees.

The damage in Honolulu caused by the storm will exceed sixty thousand dollars, it is thought. Whole blocks of streets which were the best in the city are in need of immediate repair, and the road department is without funds. The surface of the streets has been washed off, leaving the street ready to rapidly break up. In many places holes have been worn. It will be a long time before the road supervisor's office does any new road work in Honolulu.

In Makiki last night and this morning citizens might be seen wading with their shoes and socks in their hands. Piikoi street was deep with water. In some cases men who had to be in town early came from their homes with shoes and socks in their hands and their trousers rolled up above the knees, and even then the trousers got wet. The women were not disposed to follow the same plan, and they stayed at home.

Travel on the Rapid Transit last night towards Waikiki was varied by a transfer to drays. The cars going to Waikiki were stopped at Piikoi street by an impassable flood. The Rapid Transit company furnished drays, into which the passengers were invited to step. The drays drove up almost as far as Keaumoku street, where a car was awaiting them, and the passengers made another transfer. The experience was a source of no end of joking. It was the least satisfactory to those who had to alight between the two cars, where the flood was continuous.

Judge Kaulukou was among the early callers at the road department. He had a kick to make about Anala lane where he said water was invading his home and that of his neighbors. The judge indulged in some sarcastic pleasantries about the road supervisor and went away carrying Tommy Cummins' promise to have the matter investigated. Road Supervisor Johnson was with Superintendent Holloway, investigating damages at Waikiki.

Serious as the damage done in Honolulu is, it is thought that the other islands will have even more damages to report. The storm has probably been a general one throughout the group and there will be a disastrous list of damaged roads and washed away bridges. Every district will be clamoring for immediate repairs.

As usual Waikiki and the Diamond Head Sections of the city suffered from the storm. The strong wind which blew yesterday afternoon about 5 o'clock did considerable damage along the shore. Trees were blown down sheds demolished and roofs loosened. Many cocoanuts were torn from the trees but strange to relate few of the tall towering cocoanut trees were overturned by the wind.

All over the McCully tract the water reaches a depth of nearly a foot. At various places further out toward Diamond Head, yards and lots are submerged, and the foundations of houses are several inches under water many houses leaked during the rain last night.

The bridge at Kaplani Park was so undermined that a portion of it collapsed. Traffic was entirely interrupted over this portion of the road last night, the only communication being by a roundabout course by Camp McKinley. The Rapid Transit bridge at Kaplani Park is unhurt apparently. Many people living beyond the

bridge could not reach their homes last night but slept down town or else at the residences of acquaintances who lived near the bridge. Sonny Cunha used his canoe as a ferry boat to transport friends to their residences.

Kaplanai Park is submerged entirely. Both the Kaplani stream and the stream that flows down between the Annex and the Moana Hotel are running to their full volume. Pigs, chickens, taro and all character of articles including wearing apparel were swept down the latter stream into the ocean yesterday and last night. The surf is roaring and pounding at a terrific rate at Waikiki and the waves are exceptionally high and in large number. The water is very dirty far beyond the reef and a vast assortment of driftwood and other things is floating about.

### A DUEL.

The women of Paris have invented a duel which promises to be more dangerous than that indulged in by the men of that warlike land. Two women recently got into a quarrel and decided that one must die to appease the honor of both. As they had no weapons handy they removed their stockings filled them with sand and started clubbing each other in true Chicago style. One woman is now dying in a hospital.

Neglect Always Dangerous.—To the average man it seems childish to doctor a cold, and unless it becomes particularly annoying to him, little or no attention is given it. Often a cold contracted in the winter is allowed to run until the opening of spring. This is a grave mistake, as even though the warm weather may bring relief, the system is thereby weakened and rendered susceptible to disease. A cold should never be neglected, whether it be a child or an adult who is afflicted, as health and often life is risked. A bottle of Chamberlain's Cough Remedy, costing but a small amount will bring speedy relief and by its use all dangerous consequences will be avoided. For sale by all dealers. Benson Smith & Co., agents for Hawaii.

### Republican Central Committee

The adjourned regular monthly meeting of the Territorial Central Committee of the Republican Party will be held in headquarters, Fort Street, at 7:30 p. m. February 13, 1904.

WM. H. CONEY, Secretary.

### BY AUTHORITY

NOTICE.

In accordance with Section 1516, Chapter 89, Penal Laws of 1897, the following regulations governing the storage of Calcium Carbide have been adopted and will take effect on February 15, 1904:

Permission will be granted for the storage of not to exceed 100 pounds of Calcium Carbide, under the following restrictions:

- 1st. That all Calcium Carbide will be contained in water-tight metal cans.
- 2nd. That all such metal cans of Calcium Carbide, containing 2 pounds or less will be stored in a magazine or holder constructed in accordance with specifications to follow.
- 3rd. That all Calcium Carbide will be stored above the grade of the street.

### SPECIFICATIONS FOR MAGAZINES OR HOLDERS.

To be constructed of galvanized iron with all seams lapped, riveted and soldered both inside and out so as to form thoroughly water-tight joints.

Bottom should be raised at least 6 inches from floor by legs or rima. Must have cover which when closed will form a water-tight joint, and all removable parts must be securely attached to the holder by some efficient device such as a chain.

Where small packages are placed in any one holder, they should be limited to 50 of 2 pounds' capacity each.

All containers must be plainly marked with letters at least two inches in height "Calcium Carbide, Keep Dry," and cover must be marked "Keep Closed."

C. S. HOLLOWAY, Superintendent of Public Works, Department of Public Works, Honolulu, T. H., February 10, 1904.

### LOST.

Check No. 96 of The Portuguese Mutual Benefit Society in favor of Marques Lopez dated October 8, 1903. Payment has been stopped. ABEL S. NASCIMENTO, Secretary Board of Directors.

## Wilder's S. S. Co.

CHANGE IN SAILING TIME OF STEAMER "MAUI," CONNECTING WITH S. S. ALAMEDA FROM THE COAST.

Commencing Feb. 5th, the steamer "Maui," Bennett, Master, will sail from Honolulu at 5 p. m. for Lahaina, Maialoa Bay, Kawahae, Mahukona, Lapaohoe, and Hilo with mail and passengers.

Above time of sailing, subject to change without notice. WILDER'S STEAMSHIP CO.

## Why The U. S. Machine Is The Best— BECAUSE

It is the only Rotary Washer that has revolving steel ball gearing, reducing the friction and thus making machine so light running and almost noiseless.

The gear wheel turns right or left, the pin wheel or dasher reverses automatically, turning the clothes back and forth through the hot soap suds and cleaning them WITHOUT RUBBING THEM TO PIECES.

Over One Hundred Thousand in use.

The U. S. Machine have no equal because they wash clean.

## Theo. H. Davies & Co., LIMITED

SOLE AGENTS FOR THE HAWAIIAN ISLANDS

## Hardware Department

## The Island Meat Company,

WHOLESALE AND RETAIL BUTCHERS. Herbert E. Gares, Manager. Hind, Rolph & Co., Agents.

Located on Fort Street, opposite Love Building.

## NOW OPEN FOR BUSINESS

## Supply of Island Turkeys Now On Hand From Kahikinui Ranch

A supply of the finest quality of Island meats, poultry and game, together with all other market goods, also imported goods which are in demand by the public will always be on hand. Telephone Main 76. Honolulu, T. H.

## NEW LINE TAKASHAGO, BAKERY

No. 418 King Street near Beretania. Ice Cream Parlor—Cigars and Tobacco.

## Center Pieces

SILK EMBROIDERED AND OPEN WORK SILK SCARFS, SILK KIMONS, CHINAWARE, JAPANESE CURIOS

## S. OZAKI,

WAVERLEY BLOCK HOTEL STREET.

## M. OHTA, Contractor and Builder House Painter

Kewalo, Sheridan Street, near King. Honolulu H. I. Telephone Blue 1901.

## S. Kojima.

Importer and Dealer in LIQUORS, JAPANESE PROVISIONS GENERAL MERCHANDISE AND PLANTATION SUPPLIES

No. 45 Hotel Street, Honolulu, T. H. Telephone White 2411. P. O. Box 904.

## IN GOOD COMPANY

Many dollars are turned away annually by The Star in rejecting offensive and improper advertisements offered for insertion in its columns.

This is a cogent reason why The Star's advertising columns are so generally used and so widely read.

## Want ads the Star being quick results. Three lines three times for 25 cents.

Twenty-five cents pays for a week ad in the Star. A bargain.

**THE YOKOHAMA SPECIE BANK,**  
Limited.  
ESTABLISHED 1880.  
Capital Subscribed.....Ten 24,000,000  
Capital Paid up..... 18,000,000  
Reserve Fund..... 9,210,000

**HEAD OFFICE, YOKOHAMA.**  
Branches:  
Honolulu, New York, San Francisco,  
London, Lyons, Bombay, Hongkong,  
Newchwang, Peking, Shanghai, Tientsin,  
Kobe, Nagasaki, Tokio.

The Bank buys and receives for collection Bills of Exchange, Issues Drafts and Letters of Credit, and transacts a general banking business.

Honolulu Branch 67 King Street

**CORPORATION NOTICES.**

**DIVIDEND NOTICE.**

MUTUAL TELEPHONE CO., LTD.

A dividend has been declared and will be payable at the office of the Company on Monday, the 15th inst.

Transfer books will be closed from the 12th to the 16th inst.

GODFREY BROWN,  
Treasurer.

Honolulu, February 9, 1904.

**Election of Officers.**

C. BREWER & COMPANY LTD.

Notice is hereby given that at the Annual Meeting of the C. Brewer & Company, Ltd., held this day, the following officers were elected to serve for the ensuing year:

- Chas. M. Cooke.....President.
- Geo. H. Robertson.....V-Pres. & Mgr.
- E. F. Bishop.....Treas. & Secy.
- W. F. Allen.....Auditor.
- P. C. Jones.....Director.
- Geo. R. Carter.....Director.
- Clarence H. Cooke.....Director.

E. F. BISHOP,  
Secretary.

Dated Honolulu, February 3, 1904.

**Election of Officers.**

HAWAIIAN AGRICULTURAL CO.

At the annual meeting of the above Company held this day the following Board of Officers and Directors were elected to serve for the ensuing year, viz:

- Chas. M. Cooke.....President.
- P. C. Jones.....Vice-President.
- Geo. H. Robertson.....Treasurer.
- E. F. Bishop.....Secretary.
- T. Richard Robinson.....Auditor.
- W. F. Allen.....Director.
- C. H. Cooke.....Director.
- A. F. Judd.....Director.

E. F. BISHOP,  
Secretary.

Dated Honolulu, Jan. 29, 1904.

**European Restaurant**  
McLean Block, Nuuanu St., near Hotel.

**OPENS TO-DAY**

FIRST CLASS MEALS,  
21 MEAL TICKETS FOR \$4.50.

**Monday, February 15**

AT THE  
**OPERA HOUSE**

**Concert**

IN AID OF THE  
ORGANFUND OF ST. ANDREW'S CATHEDRAL.

Tickets \$1. and 75 Cents, at the Wall Nichols Co. on Wednesday, Feb. 10.

**NOTICE.**

TO OUR PATRONS AND THE GENERAL PUBLIC.

Owing to the irregularity of the systems of delivery in vogue at the various Markets, and in order to establish a more uniform system, we shall commence on Monday, the 15th inst., to make one delivery daily instead of two. The wagons will leave the various Markets at an earlier hour than at present, laden with the entire orders for the day, so that our customers may receive their Meats in better condition than when delivered in the heat of the day, and in ample time to be prepared for the mid-day and evening meals.

Thereafter, no order will be received later than 5:30 p. m., at which time the Markets close, so that those falling to place their orders for the following day prior to that hour will have to give them the following morning at not later than 7:30 o'clock.

The orders for Sunday will be delivered on Saturday afternoon as at present, and no delivery will be made on Sunday.

We would respectfully ask our patrons to arrange to place their orders so as to conform to the above change.

METROPOLITAN MEAT CO., LTD.

King St. Market and Stall Fish Market

PARAGON MARKET,

ISLAND MEAT CO.,

C. Q. YEE HOP & CO.,

Kahikini Market.

MONS. MOET AT PANAMA.

Monsieur H. Moet, who was Consul for France at Honolulu a few years ago, is now acting as Consul and Charge d'Affaires for his country at Panama, capital of the new-born Republic of Panama. In a letter to Senator A. de Souza Canavero, Consul for Portugal, Mons. Moet represents political affairs at Panama as being in considerable of a turmoil.

Star Want ads pay at once.

**Jesse Moore**  
**A. A. Whiskey**  
BEST ON EARTH



**Maldonado & Co.**  
(INC.)  
Spreckels Building,  
Honolulu H. T.  
General Export Agents For  
**JESSE MOORE-HUNT CO**  
San Francisco Cal., and Louisville Ky.

**REALTY TRANSFERS**

Recorded Feb. 8, 1904

R. M. Malster to A. M. Anin, extension of mtg. Time of mtg. dated Apr. 30, 1902 between A. M. Anin and R. M. Malster is extended for 2 yrs. from Apr. 30, 1904. Realty at Palama, 444-1000 acre. Feb. 6, 1904.

M. R. Souza to Jos. Scharsch. Rel. Lot 6, Blk. 13, Pearl City, 14,844 sq. ft., \$500. May 1, 1902.

Jos. Scharsch & wf. to E. J. Morgan D. Lot 6, Blk. 13, Pearl City, 14,844 sq. ft., \$550. May 2, 1902.

Wong Long Two Ass'n. to Lai Hing et al., Tr. D. Realty on Front st., Hilo, Hawaii; \$1. Dec. 30, 1903.

J. Reinhardt to M. Tomito, L. Realty at Ponahawai, Hawaii, 15 yrs. at \$30 per ac. Jan. 5, 1904.

M. Tomito, to Hilo Mercantile Co., Ltd., c. m. on realty at Ponahawai, Hawaii; \$500 at 10 per cent. per an. payable in mon. installments of \$50 each. Jan. 28, 1904.

Mrs. A. Nakapua to Hilo Mercantile Co., Ltd., mtg. Realty, \$293.24 at 10 per cent. per an., payable in mon. installments of \$25 each. Jan. 25, 1904.

M. Montano to Hilo Mercantile Co., Ltd., c. m. on 1 rubber tire track and 2 horses; \$375, payable on or before Aug. 28, 1904. Jan. 29, 1904.

A. C. Palfrey to Makalo, Rel. Realty at Kahinano, Hawaii, 10-8-10 acres; \$300. Feb. 1, 1904.

M. Canejo, to Yamagata, L. Realty at Halekii, N. Kona, 4 acres, 15 yrs. at \$50 a yr., payable as follows: \$75 on Feb. 18, 1903 and \$25 on 18th days of Aug. and Feb. thereafter. Feb. 18, 1903.

I. H. Sherwood to Hyashi et al., L. Realty at Honolulu, N. Kona, 15 yrs. at \$20 a yr. Mar. 30, 1898.

C. T. Simerton to Uchimura, L. Realty at Kananeue, N. Kona, 5 acres. Time 20 yrs., 5 yrs. at \$30 a yr.; 4 yrs. at \$48 a yr.; 11 yrs. at \$60 a yr. Dec. 29, 1903.

C. Moreira et ux. to M. J. Moreira, D. 2 shares in the hul land of Honolulu, N. Kona 1 and 2; \$800. Jan. 19, 1904.

Mrs. Amoe China & heb. to M. J. Aho, D. Realty at Walpio, Hamakua, Hawaii, 1 acre; \$50. July 3, 1903.

S. B. Kaleo & wf. to M. V. Holmes, mtg. Realty at Kaunaloa, Hamakua, Hawaii 18 45-100 acres; \$783.44, 5 yrs. at 10 per cent. per an. Jan. 22, 1904.

M. Teislaft et al. to Rose Enos, D. Realty on High St., Wailuku, Maui; \$5700. Dec. 19, 1903.

A. K. Forayth & wf. to Tam King Kong, D. Realty at Onoopia, Kula, Maui, 46 75-100 acres; \$900. Jan. 29, 1904.

Admr. Est. D. B. Eldredge to L. M. Eldredge, D. 2 pcs. land at Waiakoa, Maui, area 18 4-5 acres, bldgs. etc., \$550 Jan. 9, 1904.

M. Carrillo & heb. to J. F. Santos, mtg. Realty 80-100 acre; \$200, 1 yr. Jan. 28, 1904.

Iona Hulu & wf. to Mrs. C. E. King, D. Realty, Waiakoa, Molokai; \$30. Oct. 28, 1903.

Iona Hulu & wf. to Mrs. C. E. King, D. Realty at Waiakoa, Molokai; \$100. Oct. 31, 1903.

M. Kallihali & wf. to Mrs. C. E. King, D. Realty at Kiohio, Hailawa, Molokai \$10. Oct. 23, 1903.

L. Kauua to Mrs. C. E. King, D. Realty Hailawa, Molokai \$100. Nov. 2, 1903.

S. K. Kuehao to Mrs. C. E. King, D. Realty at Kaaunala, Hailawa, Molokai, \$50. Nov. 7, 1903.

Malele to Emalia, D. Realty at Manawa, Molokai, \$1. Sept. 21, 1896.

Ching York Mew to Lau Yan, Rel. Leasehold, together with store and mdise, therein, 3 dwelling houses, 2 horses, 2 wagons, 3 pigs, etc., at Kahuku, Koolauloa, Oahu; \$1500. Feb. 6, 1904.

KEEP OUT BANANAS.

The Board of Agriculture and Forestry held a meeting yesterday afternoon. A regulation was adopted prohibiting the importation of bananas from the South Seas, until further notice, owing to reports of a blight among South Sea bananas.

Want ads in Star cost but 25 cents.

**TALULA GETS NO LICENSE**

OWNERS DECIDED NOT TO SPEND ANY MORE MONEY ON HER—SO INSPECTORS WILL NOT INSPECT

The tug Talula is not to receive a license. After spending considerable money in refitting her for the purpose of using the craft in the live fish scheme, the owners of the vessel have decided that they will not spend any more money on her. The cause for this decision was the action of the Federal inspectors in demanding that certain repairs and alterations to her boilers and engines be made.

The Talula had been refitted with the idea of dispatching her around to the various fishing sampans to bring in the catches of fish at regular intervals so as to sell the fish alive from the tanks of the fish company. Naturally as she was a steam vessel she had to be inspected and licensed by the Federal inspectors. Carl F. Lehnner made a brief examination of her several days ago and notified A. Garvie the owner that before the vessel would be inspected certain alterations and repairs would have to be made.

In answer to this note Mr. Garvie wrote saying that he had decided that he would be unable to comply with the request so an inspection would therefore, not be necessary. He stated that if he could not sell the vessel, he would remove the boiler and engine and convert her into a schooner.

**AN HAWAIIAN ORDER**

Hawaii Chapter No. 1, Order of Kamehameha the only fraternal lodge of that designation in the Hawaiian Islands, dedicated its new lodge rooms in Foster Hall, Nuuanu street, last evening, with music, oratory and a social. The order is confined to persons of Hawaiian blood, but is said not to be political in its character. The following is the program of last night's affair and the committees having it in charge.

Prayer.....D. Kanuha  
Music.

Hawaii Chapter No. 1, W. H. Coney  
Music.

Hawaiian Address.....A. Fernandez  
Prayer,  
Music.

Hawaii Ponoi.  
Refreshments.

Chairman—G. H. Huddy.  
Arrangements—John Wise, George E. Smithies, A. Fernandez, J. A. Aheong, and Charles Dwight.

Reception—J. H. Boyd, George E. Smithies, James L. Holt, W. H. Coney, William Chung Hoon.

Refreshments—A. St. C. Pihanala, Antonio Fernandez, J. Fern, W. P. Jarrett, M. J. K. Hopkins.

Music—George E. Smithies, William Ellis.

Hall—Carlos Long, N. Fernandez, Charles H. Rose.

The officers are: J. H. Boyd, K. A. A. St. C. Pihanala, L. A. A. Fernandez, K. O.; David Kanuha, Ka.; W. H. Coney, Ku.; Charles H. Rose, A. P.; John H. Wise, K. P. O.; Enoch Johnson, P. K. W.; N. Fernandez, P. K. L.; J. A. Aheong, K. L.; J. Fern, K. W.

**MOTHERS AND TEACHERS.**

The Mothers' and Teachers' Club will commence their meetings on February 19 at the rooms of the Y. W. C. A., where all subsequent meetings will also be held. The programs for the first meeting is as follows:

Music.....Mrs. Hibberdine, Miss von Holt, Miss Hartnagle.

Recitation.....Miss Crosette.

Paper—"Preferences of Children in Their Studies".....Mr. Griffiths.

Open Discussion.....Mrs. Lyon.

**CIRCUIT COURT NOTES.**

Owing to parties agreeing to waive jury in cases set for yesterday before Judge De Bolt the jurors in his court were excused until Monday.

Fanny Love, administratrix of the estate of R. Love, vs. Z. C. Copeland, jury waived, was set for trial on the 20th inst.

Kapiolani Estate Ltd., in its partition suit against Ruel Kinney and P. Helamano, by its attorney, C. A. Long has appealed to the Supreme Court from the decree of Judge De Bolt.

Judge Gear has granted defendant in the suit of Brewster vs. Church ten days more to file his bill of exceptions, the additional time being for the procuring of the stenographic record.

Under stipulation of both sides, Judge De Bolt ordered judgment for plaintiff in \$125 in the suit of H. Takashi vs. W. C. Achi, it being agreed that execution should not issue for thirty days.

H. L. Holstein and C. W. Ashford, attorneys for plaintiff, have filed a motion in the Supreme Court for an order to remit the papers in the case of Iolea Kaniama vs. D. W. Fae Nohea to the Circuit Court of the Third Circuit. It is alleged that the case is not properly before the Supreme court.

W. R. Kaleoakakoi's ejectment suit against Wailuku Sugar Co., is continued for the term. It is six years since this case was started, having been brought first in the Second Circuit Court at Wailuku.

H. F. Wichman & Co., Ltd. vs. Jonah K. Kalaiananole was continued by Judge De Bolt for the term pending settlement.

John Hoffman always keeps a good woodpile and of the best quality which is a temptation that some people are not able to resist these cold winter nights.—Homer (Mich.) Vidette.

**BANK OF HAWAII LIMITED.**

Incorporated Under the Laws of the Territory of Hawaii.

PAID-UP CAPITAL - \$500,000.00  
SURPLUS - 200,000.00  
UNDIVIDED PROFITS - 70,283.95

OFFICERS AND DIRECTORS.  
Charles M. Cooke.....President  
P. C. Jones.....Vice-President  
F. W. Macfarlane, 2nd Vice-President  
C. H. Cooke.....Cashier  
F. C. Atherton.....Assistant Cashier  
H. Waterhouse, E. F. Bishop, E. D. Tenney, J. A. McCandless and C. H. Atherton.

COMMERCIAL AND SAVINGS DEPARTMENTS  
Strict attention given to all branches of Banking.  
JUDD BUILDING, FORT STREET  
ESTABLISHED IN 1853.

**BISHOP & CO. BANKERS**

BANKING DEPARTMENT.  
Transact business in all departments of Banking.  
Collections carefully attended to. Exchange bought and sold.

Commercial and Travelers' Letters of Credit issued on the Bank of California and N. M. Rothschild & Sons, London.  
Correspondents: The Bank of California, Commercial Banking Co. of Sydney, Ltd., London.

Drafts and cable transfers on China and Japan through the Hongkong & Shanghai Banking Corporation and Chartered Bank of India, Australia and China.

Interest allowed on term deposits at the following rates per annum, viz.:  
Seven days' notice, at 2 per cent.  
Three months, at 3 per cent.  
Six months at 3 1/2 per cent.  
Twelve months, at 4 per cent.

TRUST DEPARTMENT.  
Act as Trustees under mortgages. Manage estates (real and personal). Collect rents and dividends.  
Valuable Papers, Wills, Bonds, Etc., received for safe-keeping.

ACCOUNTANT DEPARTMENT.  
Auditors for Corporations and Private Firms.  
Books examined and reported on. Statements of Affairs prepared. Trustees on Bankrupt or Insolvent Estates.

SAVINGS DEPARTMENT.  
Deposits received and interest allowed at 4 1/2 per cent per annum, in accordance with Rules and Regulations, copies of which may be obtained on application.

INSURANCE DEPARTMENT.  
Agents for FIRE, MARINE, LIFE, ACCIDENT AND EMPLOYERS' LIABILITY INSURANCE COMPANIES.  
Insurance Office, 924 Bethel Street.

Claus Spreckels, Wm. G. Irwin.

**Claus Spreckels & Co. BANKERS.**

HONOLULU, H. I.  
San Francisco Agents—The Nevada National Bank of San Francisco

DRAW EXCHANGE ON  
SAN FRANCISCO—The Nevada National Bank of San Francisco.  
LONDON—Union of London & Smith's Bank, Ltd.  
NEW YORK—American Exchange National Bank.  
CHICAGO—Corn Exchange National Bank.

PARIS—Credit Lyonnais.  
BERLIN—Dresdner Bank.  
HONGKONG AND YOKOHAMA—The Hongkong and Shanghai Banking Corporation.  
NEW ZEALAND AND AUSTRALIA—Bank of New Zealand, and Bank of Australasia.  
VICTORIA AND VANCOUVER—Bank of British North America.

TRANSACT A GENERAL BANKING AND EXCHANGE BUSINESS.  
Deposits Received. Loans Made on Approved Security. Commercial and Travelers' Credits Issued. Bills of Exchange Bought and Sold.

COLLECTIONS PROMPTLY ACCOUNTED FOR.

**THE FIRST AMERICAN SAVINGS & TRUST CO. OF HAWAII, LTD.**

Capital, \$250,000.00.  
President.....Cecil Brown  
Vice-President.....M. P. Robinson  
Cashier.....W. G. Cooper

Principal Office: Corner Fort and King streets.  
SAVINGS DEPOSITS received and interest allowed for yearly deposits at the rate of 4 1/2 per cent per annum.  
Rules and regulations furnished upon application.

**CONSOLIDATED SODA WATER WORKS (COMPANY, LTD.)**

Esplanade, cor. Allen and Fort Sts.  
Manufacturers of Soda Water, Ginger Ale, Saraparilla, Root Beer, Cream Soda, Strawberry, Etc., Etc.

Star Want ads pay at once.

**Pickles**

Some are sweet—some are sour,  
All are good if bearing the name of

**Heintz Pickles**

Your grocer has them in all sizes.  
**H. Hackfeld & Co., Ltd**  
AGENTS, HONOLULU AND HILO.

**Good Evening!**

**Are You Still Waiting**

INCANDESCENT ELECTRIC LAMPS are almost indispensable in the home and the cost now is very low.  
Don't delay availing yourself of the convenience and comfort offered.

**HAWAIIAN ELECTRIC CO., LTD**  
Office King near Alakea  
Telephone Main 390

**Are You Thinking of Buying a Piano**

Our instalment plan makes buying easy and any home of moderate circumstances can own one of the celebrated

**Fischer Pianos**

A small payment down and regular monthly payments make the piano yours almost before you realize it, where you might never have one if you had to pay the cash in full.

**Hawaiian News Co., Ltd**  
YOUNG BUILDING STORE.

**THE BEST SUNSHADES**

For your Verandah is the Bamboo Screen. 4 to 10 feet in width at 20 cents per foot.

**K. FUKURODA,**  
23 and 22 Hotel St. Robinson Block.

**Crystal Springs Butter**

As Pure as Its Name Implies.

is the best in the world. Comes from the clover pastures of California, new Spring churning now here.

**METROPOLITAN MEAT CO. Limited.**  
Telephone Main 45

**"The Spice of Life"**

A FEW ARE THESE:

INDIA CONDIMENTS.  
The famous ingredients of the East India Curries, Chutnies and Sauces—all the celebrated makes.

PIMENTOS MARRONS.  
A sweet Spanish pepper for Salads and Sandwiches.

ARTICHOKES.  
In Tins—Delicious with dressing.

BOMBAY DUCK.  
With Curry and Rice—the proper thing.

**LEWIS & CO., LTD.**

THE BIG GROCERS,  
The Lewers & Cooke Building,  
109 KING STREET.  
240-2 Telephones-240.

**Three TIMES A DAY TO Chicago**

The Only Double Track Railway between the Missouri River and Chicago. THREE TRAINS DAILY Via the Southern Pacific, Union Pacific and Chicago and Northwestern Railways.  
Overland Limited. Vestibuled. Leaves San Francisco at 10 a. m. The most Luxurious Train in the world. Electric lighted throughout. Buffet smoking cars with barber and bath, booklovers library, dining cars, standard and Compartment sleeping cars and observation cars. Less than three days to Chicago without change.  
Eastern Express. Vestibuled. Leaves San Francisco at 6 p. m. Through Standard and Tourist Sleeping cars to Chicago. Dining cars. Free reclining chair cars.  
Atlantic Express. Vestibuled. Leaves San Francisco at 9 a. m. Standard and Tourist sleepers.  
Personally Conducted Excursions Wednesdays, Thursdays and Fridays. The best of everything.

**R. R. RITCHIE,**  
General Agent, Pacific Coast.  
CHICAGO AND NORTHWESTERN RAILWAY.  
617 Market St., (Palace Hotel), San Francisco.

**Byron Hot Springs**

Only 68 Miles From San Francisco on Main Line Southern Pacific Co.  
**Most Wonderful Springs in America**  
HOT SALT, HOT, MUD AND SULPHUR BATHS.  
Fine warm swimming tanks. Drinking waters of wonderful curative qualities. Pronounced the best in America for Rheumatism, Gout, Sciatica and Malaria.  
Thoroughly modern steam heated hotel as comfortable in Winter as Summer.  
Call at Star Office for booklets, or on Mr. J. K. Burkett, who kindly allows the use of his name.  
Address, H. R. WARNER, Manager.  
Byron Hot Springs, Contra Costa County, Cal.

The Hawaiian Star,

DAILY AND SEMI-WEEKLY.

Published every afternoon (except Sunday) by the Hawaiian Star Newspaper Association, Limited.

SUBSCRIPTION RATES.

Local, per annum.....\$5.00 Foreign, ".....\$12.00 Payable in Advance.

Frank L. Hoogs, - - - - - Manager

THURSDAY.....FEBRUARY 11, 1904.

THE KAUAI ASSASSINATION.

In the apprehension of the assassin of young Glennan the authorities have accomplished a splendid stroke. The arrest of the murderer aside from the necessity for punishment for a shocking crime, will serve the double purpose of being a warning to others from indulging in similar crime.

Glennan was murdered for revenge. Japanese gamblers had been preying on some of the workmen under his employ in the Makaweli ditch work. Glennan had been determined to break up the gambling and he took drastic measures to do it.

When the enormity of the crime became known, the plantation people realized that a serious condition confronted them. The natural indignation which would be aroused over such a crime caused the community in which it had been committed, to exert itself to the utmost to bring the perpetrators to justice.

But back of the necessity of apprehending the murderer merely because he was a criminal, was the necessity of throttling what might develop into a deadly gang of assassins. Had the murderer of Glennan escaped the Japanese gamblers would have at once assumed that they could with impunity, remove any persons who interfered with their operations.

The apprehension of the Glennan assassin was a most fortunate event. A terrible crime will be punished and instead of the gamblers feeling secure in their strength and forming themselves into a band of assassins and murderous highbinders, their spirit will probably be broken and their operations be checked.

WAR NEWS.

Realizing the intense interest that the public is taking in the developments in the Japanese-Russian war the Star made arrangements this morning to continue the lead which it has taken in presenting the earliest and most comprehensive accounts of the progress of hostilities.

An arrangement was effected with R. B. Kidd, the manager of the local branch of the San Francisco Marine Exchange, whereby the latest bulletins from the Examiner were sent to the local branch, and republished in the Star's extra.

A heavy battle is anticipated on shore today. Masampho has been seized by the Japanese and an army landed. A battle is anticipated at any moment. Developments in this, the first struggle between the military forces on land, will be wired to Honolulu the instant that word is received in San Francisco.

The problem of making streets and sewers for a city like Honolulu is a most difficult one. Our rapid changes of weather from a heavy fall of rain to hot sunshine that quickly makes new dust and breakage of material where the last was washed away, seems to quickly spoil the best street surface.

United States and other foreign interests in Korea will probably be looked after in Tokio, or else in St. Petersburg.

Russia had better send for Sam Johnson. No doubt the recommendations of Governor Taft late of the Philippines will appeal strongly to Secretary Taft now of the war department.

The public works engineers had better study the problem of carrying water over certain districts in Makiki. While many other parts of the city, especially Fort street and other central portions, have been greatly im-

Cummins' Cough Cure

The Old Reliable

Gives instant relief for coughs and colds.

Pleasant to the Taste

25 CTS. AND 50 CTS. PER BOTTLE

HOLLISTER DRUG CO. FORT STREET

proved, the difficulty at Makiki remains the same. Residents have had to take off their shoes and socks and roll up their trousers to alight from hacks at their homes in the present storm, and the passage of cars has been suspended.

The cable recently stated that prayers for rain were being made in San Diego, but it didn't say where San Diego asked to have the rain fall.

NO COAL FOR RUSSIA'S SHIPS. Associated Press, Morning Service. CARDIFF, February 11.—All Russian coal charters have been cancelled.

GALE ENDANGERS SHIPS. Associated Press, Morning Service. CHEEFOO, February 11.—A gale is raging which must be harmful to the Russian crippled warships. There is complete demoralization at Port Arthur.

WAR FORMALLY DECLARED. Associated Press, Morning Service. TOKYO, February 11.—A formal declaration of war has been prepared and approved by the Emperor. There is great public rejoicing over the victory at Port Arthur, though no official advice have yet been received.

BRIDGE DESTRUCTION BEGINS. Associated Press, Morning Service. LONDON, February 11.—An important bridge on the Manchurian railway was blown up today. In the explosion thirty people were killed.

RUSSIA'S SMALL ARMY. Associated Press, Morning Service. LONDON, February 11.—It now develops that the Russian military forces in the Orient number less than 100,000 men.

JAPANESE CAPTURED PRIZES. Associated Press, Morning Service. RASEBO, February 11.—The captured Russian transport Ekaterinoslav, the merchant steamer Argur and five Russian whalers have been brought into port.

FORMAL DECLARATION OF WAR. Last evening Consul Saito received the following cablegram from the Japanese Minister at Washington: Washington, February 10, 1904. Saito, Honolulu.

His Imperial Majesty, the Emperor of Japan declared war against Russia, on the 10th of February, 1904.

TAKIHARA. RUSSIA'S FIELD COMMANDER. Associated Press, Morning Service. TOKIO, February 11.—General Tchichikoff has assumed command of the Russian forces in Manchuria.

Classified Ads in Star.

Ads under "Situations Wanted," inserted free until further notice.

Wanted

A small furnished cottage, reasonable rent. Give particulars. M. H., this office.

Corporation controlling old established business, desires services of energetic and experienced business man, capable of earning \$2,500 per annum, to manage branch office. Unquestionable references required. Address Auditor, Box 536, Madison, Wis.

Situation Wanted

A youth of 18 desires position of any kind. Has good recommendation. Address H. J. B. Phone White 351.

For Sale

Fine Tract of Land at Puunui, Honolulu, 300 feet frontage on Road. Contains about 7 1/2 acres. Fine mountain and marine view. A Bargain. Price \$2,250 cash. Apply Hawaiian Star office, or to M. L. J., P. O. Box 697.

For sale cheap, two fine lots in Kaimuki Charles L. Rhodes, Star Office.

A magnificent building site on the Punchbowl slope near Thurston avenue. Particulars at Star office.

Building lot corner King and Kamehameha road. Palama terminus of Rapid Transit road. Apply at Star office.

To Rent

The clock building on Fort street, next to Lucas mill, is for rent. Apply to Hawaiian Electric Company.

The two-story residence on 1286 Beretania St. between Piikoi and Keeaumoku Sts. Rent, \$45 per month. Apply to C. J. McCarthy.

Furnished Rooms To Let

A nicely furnished front room. Mosquito proof and electric light. 494 Beretania near Punchbowl.

Investments!

If you desire a safe and profitable investment for your money we can suit you.

WE INVITE INSPECTION.

Phoenix Savings, Building and Loan Association Judd Building, Honolulu.

Guarantee Capital - - - \$ 200,000.00 Subscribed Capital - - - 8,500,000.00 Paid-Up Capital - - - 1,000,000.00

R. CAMPBELL, Cashier. H. E. POCKOCK, General Agent.

Advertisement for Head Ache in Young People, featuring an illustration of a young man and woman, and text describing the benefits of H.F. Wichman & Co. optical products.

A MILLION DOLLAR FIRE. Associated Press, Morning Service. OSWEGO, N. Y., February 11.—The Corn Products Company's starch factory, the largest in the world, has burned, with the loss of a million dollars.

TAFT A WITNESS. Associated Press, Morning Service. WASHINGTON, February 11.—Secretary Taft is before the House Insular Committee reviewing Philippine conditions.

BRITAIN WILL BE NEUTRAL. British Commissioner Hoare received the following cable message yesterday from the Foreign Office at London: The King's proclamation of neutrality in the war between Russia and Japan, will be signed tomorrow and issued as soon as possible.

MORE TROOPS NEEDED. Associated Press, Morning Service. ST. PETERSBURG, February 11.—Viceroy Alexieff has begun the mobilization of all the troops in eastern Asia. Japanese Minister Kurino left this capital yesterday without trouble.

Advertisement for Rustrelac paint, featuring an illustration of a paint can and the text 'That you hear so much about for Furniture, Floors, Bric-a-brac, etc.'

CARRARA

The Everlasting, Non-Chalking House Paint

Pacific Hardware Company, Ltd Merchant Street

M. S. GRINBAUM & CO., LTD., CASTLE & COOKE, LTD.

Importers and Commission Merchants

Commission Merchants, Sugar Factors..

AGENTS FOR

- List of agents for various companies including The Ewa Plantation Company, The Waiwala Agricultural Co., Ltd, The Kohala Sugar Company, etc.

SOLE AGENTS FOR Little Jack Smoking Tobacco

5c. and 10c. packages.

Agents for

BRITISH AMERICAN ASSURANCE COMPANY, of Toronto, Ontario.

DELAWARE INSURANCE CO. of Philadelphia.

TRUNKS!

Ridiculously Low Prices

THE VON HAMM-YOUNG CO., LIMITED

TO NUUANU PROPERTY OWNERS

WE WILL DO YOUR SEWER CONNECTIONS FOR THIRTY CENTS A FOOT. SEE US ON THE WORK.

LORD & BELSER, GENERAL CONTRACTORS.

TEL. MAIN 192. P. O. BOX 192.

M. PHILLIPS & CO., Wholesale Importers and Jobbers of

AMERICAN AND EUROPEAN DRY GOODS

Corner of Fort and Queen Sts.

Twenty-five cents pays for a Want ad in the Star. A bargain.

Fire Insurance!

THE B. F. DILLINGHAM CO., LIMITED, General Agents for F'wall Atlas Assurance Company of London, Phoenix Assurance Company of London, New York Underwriters Agency, Providence Washington Insurance Company, Phenix Insurance Company of Brooklyn.

Albert Raas, Manager Insurance Department office Fourth Floor, Stangenwald Building.

The Pacific Hotel, 1182 UNION STREET OPPOSITE PACIFIC CLUB.

NEWLY FURNISHED ROOMS

The Best Restuarant in the City . . .

MRS. HANA, Proprietor.

Our Prices Speak for Themselves

ALL LINES HAVE BEEN GREATLY REDUCED IN ORDER TO DISPOSE OF OUR GOODS AND TO MAKE WAY FOR THE RECONSTRUCTION OF OUR BUILDING. IF YOU WANT BARGAINS COME TO OUR CLEARANCE SALE THIS WEEK.

Monday, February 8

E.W. Jordan & Co., Ltd FORT STREET

# Reigning Bargains

Don't mind the rain while these bargains reign. You can't afford to miss them.

OLD ANNUAL FEBRUARY SALE  
BLANKETS, COMFORTERS, COUNTERPANES  
AND TOWELS

## IS NOW ON

Tremendous reductions made on our entire stock of these goods. Absolutely no goods in this department are held in reserve, but all at positive big reductions.

All goods on display and marked in plain figures.

N. S. SACHS' DRY GOODS CO., LTD., Cor. Fort and Beretania Sts.

# Camara & Co.

LIQUOR DEALERS

Corner Merchant and Alakea Streets.

1 de Turk Wines,  
White Seal Champagne, qts. and pts.,  
European Wines and Brandies,  
Bulldog Brand Stout and Ale,  
A. B. C., Budweiser, Pacific, Rainier and Primo Beers,  
In qts. and pts.

Telephone Main 492. P. O. Box 664.

## WORK ON NEW CODE

The code commission, appointed under an act of the last legislature, is holding nightly meetings now, to go through the laws of the monarchy, Republic and Territory and codify them. The commission consists of Chief Justice Fear of the Supreme Court, A. A. Wilder and A. F. Judd. The commission has found its task to be a vast one and will have difficulty in finishing by the time the next legislature meets, when a report is to be made.

The report is to be a complete compilation, in the most approved modern form, of the laws of Hawaii. The annotations will include historic information about each section and references to other sections of law bearing upon them and to decisions construing them. The work will be such a one as Hawaii has never had, but which attorneys have long desired. The index will be as comprehensive as it can be made.

It is the general opinion of attorneys that the laws of Hawaii are gravely lacking in proper compilation and indexing. No effort at an elaborate index has ever been made, and the changes of form of government and legislative meeting since the last compilation have left the islands without any complete work on the laws.

The code commissioners are going over every law that was ever passed here. Every section is being traced back and under it in the forthcoming book will be found notes giving the results of the tracing, as well as the other references often so valuable to attorneys in consulting law books. The

When you make your will name Henry Waterhouse Trust Co., Ltd., as your executor. Then place the paper in one of its safe deposit boxes—and die in peace. Your estate will be administered competently and economically.

MANAGER SMITH LEAVES.  
F. M. Smith who came here to manage the Royal Hawaiian Hotel resigned his position today and will return to San Francisco Tuesday via the Sierra. He and Colonel Macfarlane had a disagreement over a detail of the management so Mr. Smith left the employ of Colonel Macfarlane suddenly today.

Here are the latest creations in a Tropical Hat. LIGHT, COOL, AIRY. Weighs only 3 ounces.

The No-It-At-Imi FIBRE PANAMAS  
In all of the popular shapes. Come and have a look at them.  
Price \$1.00.

LEIVINGSTON'S Young Building

# MUST GO TO FIGHT

JAPANESE IN HAWAII WHO ARE MEMBERS OF THE NAVAL OR MILITARY RESERVE SHOULD ANSWER THEIR COUNTRY'S CALL, SAYS CONSUL-GENERAL MIKI SAITO—SHOULD DEPART PEACEFULLY.

The following is a translation of a proclamation issued today by the advice of His Imperial Japanese Majesty's Consul-General in Honolulu, Miki Saito, and distributed in Japanese throughout the entire islands:  
"It is with the deepest regret that we have to announce that the prolonged negotiation for a peaceful settlement of international differences between Japan and Russia has failed, and that Japan is compelled to resort to the arbitration of war for the solution thereof. It is but proper that the subjects of His Imperial Japanese Majesty, residing within the Territory of Hawaii, and under the protection of the United States of America, should regulate their conduct with due regard to the well-known obligations of a belligerent's subjects, residing within the territory of a neutral friendly Power; and it should be their special care, at this exciting moment, to conduct themselves calmly, quietly, and in moderation in the peaceful intercourse with their employers and with all others."  
"Should the Home Government call the reserves and landwehr into actual service, both of Army and Navy, it shall be the high privilege for those residing in Hawaii, and who belong to either class, to immediately respond to the patriotic call of their country and return to Japan. It should be their special care to make preparation to be ready to return in as calm and quiet a manner as in time of peace."  
"By the advice of H. I. J. M.'s Consul General, Honolulu, T. H.  
"The Central Japanese League  
"Honolulu, February 11, 1904."

## FRISCO CABLE MAY BE BROKEN

\*There is danger that cable communication between Honolulu and the mainland may be cut off for a short time. The sea cable is fortunately not in danger but a section of the land line is apparently in danger of being swept away.  
The pipe in which the land section of the cable runs from the landing station at Sans Souci to the main office in the Young Building, passes along the Waikiki road. This pipe goes under the bridge at Kapoli Park. The bridge is now in danger of collapsing. One portion of the bridge has been carried away and the prospects this morning were that the entire structure would give away. The recent freshets are the cause of the bridge being undermined. Little can be done for the present until the water subsides as it is dangerous to life to send any one under the bridge.  
Should the entire structure be carried away the cable line would in all probability be swept away with it.  
With the land section broken the cable messages would have to be sent directly from the station at Sans Souci. The apparatus for sending messages from Sans Souci is not in place at that station and a delay of at least six hours would ensue before such installation could be made.

## GEORGE A. DAVIS CASE ON TRIAL

UNITED STATES JUDGE DOLE TAKES UP THE DISBARMENT HEARING—ALL THE OLD WITNESSES PRESENT AND THE TESTIMONY BEGINS ON THE SAME GENERAL LINES AS IN THE FORMER CASE.

The George A. Davis disbarment case was begun this morning before United States Judge Dole, with a large number of those who attended the former hearings in the Territorial Supreme Court present. The hearing was greatly similar to the former Summer disbarment hearings, though the proceedings were not so noisy as in Davis' last case. John K. Sumner was present all the morning and appeared to be an interested listener to the testimony.  
The testimony of Wally Davis was taken without many objections on the record. In most cases where the respondent made an objection he withdrew it after discussion. Once Judge Dole induced him to do so by stating that he regarded the objection as improper, and once District Attorney Breckons brought about the same result by a reference to quoting the United States Attorney General's letter calling for a "thorough" investigation. Judge Dole noted the testimony very diligently and was even with the stenographer in quoting statements of the witness when they were called in question. There were a few sharp passages between the attorneys.

Wally Davis appeared to have a good recollection of many of the details of the various Summer suits and transactions. He went again over all the ground covered in the former hearing, telling how Davis asked him to bring his mother, Sumner's aged sister, to his office, and how the various suits were carried on subsequently. Davis objected to conversation between Wally Davis and John K. Sumner about Sumner's intentions towards his sister. The witness related Sumner's statement to him and Sumner's sister that he was tired of the litigation and didn't want to keep on fighting. He would give her \$10,000 and the same to each of the Elsie's, also to the church, if they could stop all litigation, and he would agree to pay all the attorneys.  
Davis objected to all this and began a vigorous speech. "It is not proper

testimony," he began, "I am here on trial for malpractice and infidelity to my client."  
"At your own request," interjected Breckons.  
"Also at the request of the department of Justice," said Davis.  
Judge Dole ruled that the evidence might be stricken out and Davis produced the letter from Washington to Breckons, proceeding to argue further on how the investigation was brought about. He read the letter, ending with instructions to Breckons to make the investigation a "thorough" one. "It is very evident that it is not going to be a thorough one," said Breckons at this point.  
Davis then withdrew his objection and motion to strike out and the evidence went into the record with some more along the same lines.  
Wally Davis continued his story without interruption until he got to the account of Davis' securing a note from Sumner for \$2,000, as a fee for getting the \$48,000 from Bishop's bank. It appeared from the testimony that he did not get the money and did not return the note. "You may state whether or not he ever said anything about why he did not return the note," said Breckons.  
The respondent objected on the ground that such evidence was not admissible. He produced his power of attorney from Sumner and argued from it that his acts were not to be attacked as was being done. Judge Dole remarked that the evidence asked for was what Davis himself had said. The question was read again, and Davis pressed his objection, asking for a ruling from the court.  
"Mr. Davis, this is an investigation into your conduct and I do not think it is proper for you to make such an objection," said Judge Dole.  
"In that case I withdraw the objections," said Davis, and the testimony went on uninterrupted after that.  
Breckons finished with Wally Davis shortly after 11 o'clock and cross-examination was begun.

## STORM BECOMING VERY DISASTROUS

SIXTY THOUSAND DOLLARS' DAMAGES BELIEVED TO HAVE BEEN DONE IN HONOLULU—MAKIKI STREAM DESCRIBED AS A RIVER THIRTY FEET WIDE AND FIFTEEN FEET DEEP.

Passengers on an early car from Waikiki this morning saw a chicken coop floating easily seawards on Makiki stream. There were chickens in it, but they didn't seem to be worrying over their ride on the muddy river, not being aware of the coming chances for the overturning of their ark when it reached the bridge. On either bank of the stream were several Chinese, running wildly to and fro and shouting as if they thought they could call the chickens back.  
The chicken coop was only one of numerous things which the storm of yesterday afternoon and last night washed down the stream. A large number of residents near the stream above King street were up all night, working to keep floods from their homes. "The stream was thirty feet wide and fifteen feet deep," said one of them.  
Pikoi street as usual was the storm center of trouble. With the heavy downpour of yesterday afternoon the entire street became a raging torrent. It was a river from curb to curb as far up as Wilder avenue where it receives the flood waters from the eastern slopes of Punchbowl. Between Beretania and King streets, it was a river that covered the sidewalks and flowed over into the yards on both sides. It quickly covered the King street line of the rapid transit with mud, gravel, stones and even buildings, that no force of men could keep clear.

## PREACHERS AND THE CHICAGO HOLOCAUST.

CHICAGO, Jan. 9.—"The fire is a lesson from God to warn us against a government of monkeys, in whose paws we have foolishly, childishly, intrusted our lives and the lives of those we love."

With this scathing arraignment of the city administration the Rev. Franklin Johnson of the University of Chicago opened his address before the Baptist ministers in the Masonic temple yesterday.

"The spectacle of those men we have placed in office," he said later, "ridiculously springing up and making a great hubbub, crying aloud for us to punish the guilty while they alone are responsible, hiding behind their chosen scapegoat, seeking to escape the censure and punishment they deserve, is a lesson to us. God helps those who help themselves, and he has shown us that so long as we trust blindly in incompetent men to guard our safety, we can hope for but little divine aid. Pray for the afflicted, but pray mostly that in the future we put men in place of monkeys in our positions of trust."

Many resolutions of sympathy were passed at gatherings of ministers yesterday, but only one clergyman of the many hundreds in the city chose to denominate the holocaust "God's judgment."

"The Iroquois fire was nothing less than a warning to those who flock to the class of theater patronized and sustained by Chicago's best citizens," asserted the Rev. F. J. Brobst, an evangelist. "This 'Mr. Blue Beard' production and the Iroquois theater in which it was witnessed by thousands of professed religious persons were awful in the eyes of the Lord. The theater was a house of moral and spiritual death."

A silence like that of death followed these remarks.  
Dr. L. S. Darsie, pastor of the Jackson Boulevard Christian church, at the annual meeting of the Christian church missionaries, stigmatized utterances similar to those of Brobst's as "un-Christian and blasphemous."

## THE HOFFMAN CASE.

A well known principal of one of our large grammar schools was giving a class a short talk on current events Monday morning and the children seemed to be taking a good bit of interest in the affair. At last she asked how many were interested in the course of events in the far East. A number of small boys sat up straight at once and two of them fairly jumped up and down with excitement while one said: "Say, teacher, dat's de Hoffman case, ain't it?"

## HIS AMBITION.

A teacher at Buckport, Me., is feeling a bit discouraged just at present. The other day she was trying to get a bit of knowledge into the class in arithmetic, and one boy in particular would do nothing that he was asked to. Finally the teacher, in desperation, turned on him and asked him what he intended to be if by any chance he was permitted to grow up. The youth replied that he thought he would be a teacher, and have his scholars do his figuring for him.

The line was cut in two. Cars could not pass. A dray was impressed into the service as a ferry to carry passengers across the water, the cars already on the Waikiki side keeping up that end of the service, while the cars on the town side kept up the service on this side. After a while a Metropolitan delivery wagon was impressed into the service in aid of the dray. Later a covered bus was put in commission and was used this morning. So great was the volume of water pouring down Pikoi street that it flooded King street both ways, as far as Koenunoku in one direction. Every effort was made to carry it away. A breach was made in the stone wall on the lower side of King street, and a torrent was carried off through the pasture at that place. An opening was made through the sidewalk and a big stream was carried down through the Chinese vegetable garden on this side of Pikoi. On the other side of Pikoi the water from King street flowed over the sidewalk and toward the sea through several of the houselots on the lower side.  
The Hotel street line of the rapid transit was also stopped for a while at Pikoi street, but the interruption was of short duration.  
All over the city the streets show the effects of the heavy rain.  
About 6 o'clock yesterday afternoon a falling tree broke the wires supplying the Plains section of the Hawaiian Electric Company's system, and a little later another falling tree near the Chinese consulate at Thomas Square put the Makiki system out of commission. The Waikiki system was cut off for about three quarters of an hour while the danger from live wires was obviated. There was another break of a small section up Nuuanu valley.

(Continued on page 2.)  
KEPOIKAI SUSTAINED.  
The Supreme Court this afternoon rendered a unanimous decision in the case of C. M. Cooke vs. Treasurer A. N. Kepoikai. The case was an appeal from a decision of the treasurer assessing stamp taxes on a deed on \$62,500, being the full amount of consideration named in the deed. The treasurer's action is sustained.

## NEW ADVERTISEMENT

YOKOMIZO & KASHIWABARA  
Contractors as follows: Stonework of all kinds; cement work of various descriptions; and all kinds of solid materials for fillings; hauling at reasonable rates. Office: Emma Hall, corner Nuuanu and Beretania streets; Tel. Blue 1211.

## MATINEE (PIANO RECITAL)

## Concert

Saturday Afternoon at 2:30

## Friedenthal

The Eminent Pianist will give a recital especially dedicated to students and amateurs at

## Punahou Hall

Second and last concert.  
Admission 75c. Students 50c.  
Seats may be reserved at Wall, Nichols Company.

Star Want ads pay at once. 5c each

A Summer Proposition.

ICE QUESTION!

Well, now, there's the... You know you'll need ice; you know it's a necessity in hot weather. We believe you are anxious to get that ice which will give you satisfaction, and we'd like to supply you. Order from

OAHU ICE & ELECTRIC CO.,

Telephone 1151 Blue, Postoffice Box 506.

W. G. IRWIN & CO., LTD.

Wm. G. Irwin, President and Manager... Wm. M. Giffard, Second Vice-President... H. M. Whitney Jr., Sec'y and Treasurer... Geo. J. Ross, Auditor

SEAR FACTORS, COMMISSION AGENTS

AGENTS FOR THE... Steamship Company of San Francisco Cal.

AGENTS FOR THE

Scottish Union National Insurance Company of Edinburgh... Williams of Magdeburg General Insurance Comps y... Alliance Marine and General Assurance Co., Ltd., of London... Royal Insurance Company of Liverpool... Alliance Assurance Company of London... Rochester German Insurance Company.

Union Pacific

Railroad

SUGGESTS

Speed and Comfort

Trains leave daily through our first and second class to all points. Reduced rates take effect soon. Write today.

S. F. Booth,

General Agent.

211 Montgomery Street, San Francisco.

THE

New Overland

LIMITED

SAN FRANCISCO TO CHICAGO IN

Less Than 3 Days

AND NEW YORK

3 Days 19 Hours

AN

EVERY DAY TRAIN

Bath, Barber, Buffet, Library, Electric Lights, Reading Lamps, in Every Berth, Observation Car Telephone Service.

Southern Pacific

E. O. McCORMICK, Passenger Traffic Manager

T. H. GOODMAN, General Passenger Agent.

SAN FRANCISCO, CALIFORNIA.

HART & CO., LTD

The Elite Ice Cream Parlors, Chocolates and Confections, Ice Cream and Water Ices, Bakery Lunch.

THE FINEST RESORT IN THE CITY

RAILWAY AND LAND CO'S

TIME TABLE

MAY 1ST, 1903.

OUTWARD.

For Waialae, Waialua, Kahuku and... For Ewa Mill, Ewa Mill and Way... For Honolulu, Ewa Mill and Way... For Honolulu, Ewa Mill and Way... For Honolulu, Ewa Mill and Way...

INWARD.

Arrive Honolulu from Kahuku, Waialua and Waialae... Arrive Honolulu from Ewa Mill and Way... Arrive Honolulu from Ewa Mill and Way... Arrive Honolulu from Ewa Mill and Way...

W. H. BENISON, F. C. SMITH, G. P. & T. A.

Impure Blood

Impure blood will always make you sick. You suffer from headache, great depression, indigestion, sleeplessness, a bad skin, extreme exhaustion, and you can hardly drag yourself about.



Read what Mr. H. J. Matthews of Wellington, New Zealand, says about this. He also sends his photograph. 'I have suffered a great deal from impure blood, especially from boils on my arms and back. I felt weak all over and was greatly depressed. I began to use Ayer's Sarsaparilla. After taking only a little of it I felt better, and soon my troubles disappeared. I believe this medicine is the best blood-purifier and the strongest tonic that any one can buy.'

AYER'S Sarsaparilla

There are many imitations "Sarsaparilla." Be sure you get Ayer's.

Use Ayer's Pills every time your bowels become constipated, or when you are bilious or have sick headache. They cure quickly.

Prepared by Dr. J. C. Ayer & Co., Lowell, Mass., U.S.A.

BY AUTHORITY

PUBLIC LANDS NOTICE.

On Friday, February 19th, 1904, at 12 o'clock noon, at the front entrance to the Judiciary Building, Honolulu, T. H., there will be offered for sale at Public Auction a License for a period of fifty (50) years, for the privilege of entering upon certain public lands on the Island of Hawaii, Territory of Hawaii, to confine, conserve, collect, impound, divert and sell all the Running Natural Surface Water, and power produced therefrom, (subject to existing vested rights of private parties in such water, and to the rights of the United States therein), upon and from all the said public lands situated on the Island of Hawaii, in the Territory of Hawaii, within the following area, to wit: Boundary. Bounded on the North by the sea, on the East by Waipio Valley, on the South by Waipio Valley, the Puukapu-Laupahoehoe boundary until such boundary line reaches an elevation of 4,200 feet, from which point the contour line of 4,200 feet elevation shall form the balance of the South boundary, and on the West by the Honokane-Awini boundary as shown by green border on the sketch plan subjoined to license, the whole of such area being hereafter called the Kohala-Hamakua Water Shed. Stated Annual Fee \$500.00. Upset, 2 1/2 per cent of Gross Revenue, but in no event, after expiration of 2 years from date of license, shall the revenue received by the Government through this clause amount to less than \$2500 per annum. Any bid other than on percentage of Gross Revenue will be rejected. Upon fall of the hammer the successful bidder will signify his acceptance of the license and of all the terms thereof by his written endorsement thereon, and the payment of the first Five Hundred (\$500) Dollar fee. For full particulars, in regard to conditions of said license, apply at the office of Commissioner of Public Lands Honolulu, or at the office of Sub-Agent of Public Lands, Hilo.

JAS. W. PRATT, Commissioner of Public Lands. Honolulu, T. H., Jan. 23, 1904.

CHAMBER OF COMMERCE.

The trustees of the Chamber of Commerce held a meeting yesterday afternoon. There was some discussion of the effect the war in the Orient might have on Hawaii, either by creating unrest among the Japanese laborers, or by other means. A committee consisting of F. J. Lowrey, J. A. Kennedy and J. P. Morgan was appointed to confer with the governor on his return, about the question of warrants, and of purchases of supplies from merchants to be provided for by appropriations by the next legislature. William Haywood was reappointed as the Washington representative of the Chamber. Communications were received from the Navy League of New York, the New York Board of Trade and Transportation and the National Business League. The report of the Hawaii Promotion Committee was read. This showed that over \$11,000 provided by the Hawaiian Government has been expended, and there was about \$3,000 provided by the Chamber on deposit in the Bank of Hawaii. The secretary's report was not read, but on motion of E. D. Tenney, was referred to a committee, for inspection. It deals with the organization of the Promotion Committee, its work in endeavoring to get tourists, etc. The work will be given a thorough investigation by the committee, who may want to know what return is being made for the big expenditures.

KOREA AS THE SANDWICH MAN

Continued from page one.)

Koreans had made great progress in the arts. They built ships two hundred feet long and covered them with plates of iron, the iron being hammered into small plates and fastened by small spikes driven into the wood. They made woven fabrics, and were very skillful in metal work, in the fashioning of jewels, and in the manufacture of pottery. They were far in advance of their Japanese neighbors, to whom they have taught the arts of metal-working, pottery-making, and silk-weaving. Three centuries ago, Japan overran the country and devastated it, transferred whole colonies of artisans to Japan, and broke down forever the military power of Korea. Korea has produced but little literature. Korean students have been largely devoted to Chinese authors. The native literature consists largely of descriptions of scenery and folk-lore.

The people of Korea may be described generally as robust, amiable, industrious, pleasure-loving, and given rather to the arts of peace than to the ardors of war. They are agricultural rather than commercial. They are kindly and generous. They have no national religion, and never have had. Confucianism, so far as regards the worship of ancestors, the reverence for parents, and the dignity of family, has a stronger hold than any other form of religion. Buddhism has always had a languishing existence among them. There is a widespread belief among the people in witches, in spirits, and in devils. There are relics of fetishism. The costumes of the men and the women do not differ widely from those in use thousands of years ago. The universal costume is cotton cloth, bleached and unbleached. In winter, this is padded with short staple cotton which grows in Korea and is carded into pads for the purpose of quilting the clothing of the people. Their headgear is remarkably varied in form. They have a different form or a different kind of hat for almost every station in life. All the unmarried men in Korea are called boys, and wear their hair in braids down their backs. Marriage may take place at any age from twelve upward, and when a boy is married he is a man. The women of Korea have no legal status. A man may have one wife, and her children are his legitimate heirs; but a Korean may have as many concubines as he may have the ability or the disposition to support.

The form of government today is in name imperial. In 1897, after the close of the Chinese and Japanese War of 1894-5, the Korean king assumed the title of "Emperor," so as to enforce upon the attention of his own people the fact that he stood on the same basis as the ruler of Russia, the ruler of China, and the ruler of Japan. His power is unlimited. He has a cabinet of ministers, which constitutes his council. The members of this cabinet are changed by the imperial will, and the imperial will changes oftener than the phases of the moon. The empire is divided into districts and magistracies, which are governed by governors and magistrates appointed by the Emperor. These officers, in their turn, are not responsible to any but the sovereign, and are not affected by constitutional lets or hindrance of any kind. They have the power of life and death, and of the confiscation of property, subject only to the possible inquiry of the Emperor, whose attention may be brought to their acts by his professional spies and informers, who everywhere are passing up and down among the people. The entire government is based upon a system of squeeze, and the poor coolie is ground into the earth. He has no constitutional or legal protection. He must find his protection under the wing of some neighboring officer or nobleman of rank and power.

There is nothing to prevent any magistrate, at any time, from sending his police runners to apprehend the person of any alleged rich man, convey him to prison, and subject him to torture even to death for the purpose of extorting a part or all of his property. The result is that the average Korean feels no incentive to thrift, and therefore he lives in a hand-to-mouth, free-and-easy sort of way. In abundant seasons, he is fat, and shines with the oil of plenty; in lean seasons, he starves, and dies by the thousands. So it has come to pass that many travelers who are superficial observers have given the Korean the name of idler and loafer, which is far from being a just description. The Korean, when protected, is energetic, industrious, faithful, and reliable. He is susceptible to kindness, and appreciates mercy and gentleness when he understands that they are not dictated by fear, but flow from a sense of justice. The Korean has a quick and ready mind. He is a good linguist and a good mathematician, and is a most promising subject for development when once he shall be permitted to enjoy a firm, intelligent, and beneficent government.

The position of Korea is unique. She is the youngest of the nations to come into diplomatic relations with the Western world. The treaties with the United States and England were made in 1882; with Germany, in 1883; with Russia and Italy, in 1884; with France, in 1886; with Austro-Hungary, in 1892. She has no well-established postal facilities or means of transportation and communication. She has only one short railroad, while others are projected, and only a few miles of telegraph lines, and these mostly controlled by foreigners. The means of transportation of men and goods is man-back, ponyback, cow-back, by means of sedan chairs, and by two-wheeled, clumsy bull-carts. She manufactures feebly an insufficient supply of textile fabrics, of pottery, and of metal wares. She exports rice, ginseng, and fish. Korea has never recovered from the blighting ravages of the Japanese conquest of three centuries ago. At no time since then has she had an army worthy the name. She has no military class, no military aspirations, no military aptitude, no military instruction. Her present army, nominally of seven thousand men, is deservedly a laughing-stock and an object of proper ridicule when it is not an object of dread. Her soldiers, poorly equipped and badly paid, instead of being a body for protection, become a band of desperadoes, of which the Emperor, the court, and the people are desperately afraid. The Koreans are not cowards, but they are spirit-broken, resembling in this respect the fellaheen of Egypt. Corruption and intrigue have dwarfed even such tardy growth as has come to her since the Western powers opened a way into her ports and interior. Her salvation for the future depends upon the institution of wise government at home and the neutralizing of ambitious projects of other nations abroad. She is designed by nature to be a buffer state.

At the same time that Russia was assuring the powers that she was only temporarily occupying Port Arthur and would leave as soon as the country was pacified, she was increasing her expenditures on her army and navy in the East, and pouring out hundreds of millions in the construction of railroads and cities and churches and permanent barracks, and in internal development and in facilities for railroad terminals. She has expended, in recent years, with increasing lavishness, since she obtained possession of Manchuria, more than the Boer war cost England in South Africa. She has constructed the best-equipped and best-built branches of the Siberian Railway in Manchuria. She is constantly increasing the numbers of her soldiers, both in Siberia and in Manchuria. She is constructing permanent buildings in the numerous cities which are developing along Manchurian railways. Her people are constructing permanent churches, and are settling upon the farm lands and building homes thereon. All this may be "temporary," but it has the look of permanency. It has never been explained how it was that, if the Japanese occupancy of Port Arthur was a menace to Peking and a peril to Korea, Russian occupancy of the same territory was not equally a danger and a menace. In 1897, Russia informed an uneasy world that her warships, which had just arrived at Port Arthur, were merely there to pass the winter, that being a convenient harbor for that purpose. They are there yet. Manchuria has become pacified. The time fixed for the evacuation has passed by, and Russia remains. She remains in greater force than ever; and if Russia's past history counts for anything as an aid in interpreting her present intentions and her future purposes, she intends to remain in Manchuria.

(Continued on page 7).

COMBINATION BILLIARD AND POOL TABLE

For family use. Greatest thing for keeping the men folks from "going down to the Club" at night.

We have 2 sizes, 3 1/2 x 7 feet and 4 x 8 feet, with 2 & 3 1/2 in. balls. A complete outfit of balls, cues etc., (40 implements in all) is furnished with each table. Twenty six games, including various forms of Pool and Billiards, also Balletto, Golf, Tennis etc., are played on these tables and a book of rules and instructions is furnished with every table.

Sold at \$60.00 and \$75.00 on easy terms. An Ideal Home Table at a very Reasonable Price.

E. O. HALL & SON, LTD.

For Afternoon Teas and Other Occasions

Large assortment of fresh choice goods made by American Biscuit Co. Wine, Ginger, Dates, Ginger Nuts, Pretzels, Fruit, Jenny Lind, High Teas, Arrowroot, Graham, Cracknels, Nicanas, Snowflakes, Dainty-chips, Saline Wafers, Extra Sodas, Water Wafers, hand made Water Wafers, Lemon, Vanilla, Ginger, Orange and Chocolate Wafers, Dr. Johnson's Educators, also Peck, Freese & Co.'s celebrated London Biscuits.

Henry May & Co., LIMITED

RETAIL MAIN 22. TELEPHONE. WHOLESALE MAIN 92.

Blankets! Blankets!!

Special Sale of Blankets In All Sizes and Colors

K. ISOSHIMA,

NO. 20, S. KING STREET NEAR BETHES

Royal Restaurant

THE BEST RESTAURANT IN THE CITY

Opens for Business

King Street near Maunakea Next to Progress Saloon.

T. Hayashi, Picture Frame

Wood Carver and Cabinet Maker. Artistic work in Koa, Koa and other Hawaiian woods. CONTRACTOR AND BUILDER 98 Beretania street, near Maunakea.

WING TAI,

Dressmaking

Ladies', Gentlemen's and Children's Underwear made to order. Mosquito Nets in Stock. Nuuanu Street Near Hotel.

DO IT NOW....

Insert Your

Want Adv't

In the STAI

Special Associated Wireless 2:30 p. m.



# WAR DECLARED

On all impurity. Only absolutely pure ingredients are used in brewing the delicious Primo Lager. It is not fortified with injurious acids like imported beers are to preserve them in this climate.

# KOREA AS A SANDWICH MAN

(Continued from page 6.)

The immediate cause of the present difficulty between Russia and Japan is the failure of Russia to evacuate Manchuria, and Japan is determined to know, if possible, what Russia's future purposes are with reference to Manchuria and to Korea; for while Russia has been busy strengthening herself in Manchuria, she has been equally busy in endeavoring to strengthen herself in Korea, in view of the centuries of continuous expansion of Russia. Japan may well be excused for being nervous. Japan has proposed that Russia shall recognize her interests in Korea as paramount, in return for the recognition by Japan of the paramountcy of Russian interests in Manchuria, agreeing that Russian rights in Korea shall be as liberally recognized as Japanese right in Manchuria. Russia insists that she will not discuss Manchurian questions with Japan, but that she will consider a practical division of Korea. This proposition, naturally, is wholly unacceptable to Japan.

Japan wants the integrity of China maintained, the control of China in Manchuria re-established, and the commercial door in the entire empire kept open. Japan is willing to respect the paramount interests of Russia in Manchuria, subject to China's administration, in exchange for Russia's recognizing the similar paramountcy of Japanese interests in Korea. Up to this time, Russia refuses to accede to these demands of Japan. Behind all the play and counterplay of diplomatic events, behind all the answers and retorts of strenuous Jap and strenuous Slav, behind all the alleged solicitude for open doors, Korean and Chinese integrity, there are the fierce figures of national ambitions, national hopes, national necessities, and national jealousies. Unless the world forbid it, Russia and Japan will, sooner or later, by these belligerent forces be pushed into armed combat, because their interests as nations are irreconcilable and opposing. Either there must be arbitration and acquiescence in the inevitable compromises suggested by the tribunal of arbitration or there must be war. If war could be confined in its operations to Japan and Russia, the world would doubtless be less concerned; but involved in any war in the Orient to-day is the possibility of a world-wide conflagration, in which would be involved the destinies of the twentieth century.

"If Russia should win,"—that is the question that touches profoundly the English statesmen. The supremacy of England in Asiatic affairs has been seriously impaired, if not destroyed, during the last fifteen years. A Russian triumph at this time, under existing circumstances, would so exalt the already dominating influence of Russia in Asia as to be a staggering blow to English supremacy, from which it may well be questioned if England could soon recover. A Japanese victory would result in complications sufficiently serious to give rise to problems sufficiently intricate, but by no means so threatening as the other alternative. Hence, there is no question but that at present the influence of England and France is being thrown to maintain peace, if possible.

One word, in closing, as to the relations of the United States to this particular contest. Under and by virtue of the provisions of a treaty negotiated by Admiral Schufeldt on May 22, 1882, the United States and Korea agreed with each other that if, at any time, either of them were put upon by a foreign nation, and her integrity and her soil threatened, the other would come to her assistance and use her best endeavors to ward off injury from her ally. Under this treaty, we have had intercourse with Korea all these years. The treaty still stands. Korea has not as yet, in view of either Russian aggression or Japanese aggression, or in view of Chinese aggression previous to 1894, seen fit to appeal to this government to carry out this agreement contained in that treaty. If she should do so now, it would raise a serious question as to just what the duty of the United States would be in the premises.—Ex-Senator J. Sloat Fassett in Review of Reviews.

# WALTHAM WATCHES.

STEM WINDING, LEVER ESCAPEMENT.  
THE BEST POCKET TIMEPIECES IN THE WORLD.

MANUFACTURED AND GUARANTEED BY THE  
**AMERICAN WALTHAM WATCH COMPANY,**  
WALTHAM, MASS., U. S. A.

THE OLDEST WATCH FACTORY IN AMERICA AND THE LARGEST IN THE WORLD.

FOR SALE BY RELIABLE WATCH DEALERS EVERYWHERE.



IF YOU ARE LOOKING for a perfect hair dressing you should try Pacheco's Dandruff Killer. The sweet and refined odor it leaves in the hair makes it an excellent toilet luxury.

Sold by all Druggists and at the Union Barber Shop. Tel. Main 222.

## M. Shirokane, General Employment Office

Japanese and Chinese Laborers, Etc. Supplied.

## Contract Work of Every Kind Undertaken

Corner Emma and Beretania Streets. Telephone Blue 2181. King Street, Corner Walkiki Road, Telephone White 1521.

## S. SAIKI, Bamboo Furniture

AND PICTURE FRAMES. Neat and Handsome Designs, made to order. 883, Beretania Street, near Punahbowli.

## Largest Stock of Linoleum In Honolulu

Two large shipments have just arrived and the patterns are all beautiful—many entirely new.

Linoleum is the most satisfactory floor covering for offices, bathrooms, kitchens, etc. It is more serviceable than paint or varnish and easily cleaned.

New stock now ready for inspection.

## LEWERS & COOKE, LIMITED

177 South King St.

## MIRIKIDANI

Barber Shop and Bath Rooms

Niuanu Street, between Pauahi and Beretania.

## K. OKI,

120 Beretania Street, near Maunaken.

## PLUMBING AND TINSMITH

All Work Carefully Done.

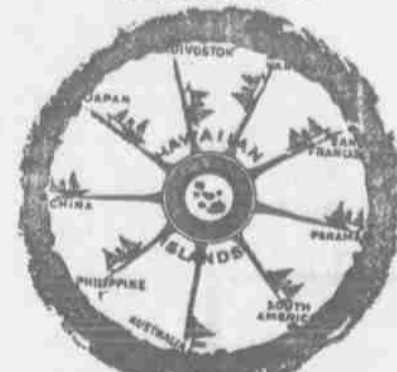
## CLINTON J. HUTCHINS, INSURANCE

Life

Ax

Fire

Marine



MOINERY BLOCK, FORT STREET

## Silk Pongee Pajamas

We have just received a large line of white and brown silk pongee pajamas and are offering them at popular prices. See our window display.

## Oriental Bazaar.

### MARRIED.

GIGNOUX-PIERCE—At the residence of Mr. and Mrs. John W. McDonald, Walkiki, Rev. Father Valentine officiating, Miss Jeanette Pierce to A. J. Gignoux. The bride has been a resident of Honolulu for the past two years. The groom is connected with Benson, Smith & Co.

### KUEHU KILLED.

The mutilated body found on the railway track between Iwalei and Kaili camp on Tuesday evening was that of a native named Kuehu, a laborer who had been employed in Lewers & Cooke's lumber yard. He leaves a wife

He had been living at the Kaili camp. An inquest over the remains will be held at the Police Station at eight o'clock tonight.

### SAILING OF THE TEXAN.

The S. S. Texan will sail from Seattle on or about February 25 for Honolulu.

### WANTS TORRENS TITLE.

Another petition for a title from the Torrens land court has been filed, the petitioner being Mrs. Anna M. Stokes. She asks the court to give her title to land recently purchased by her on Liliha street.

# SYRUP OF FIGS



To sweeten,  
To refresh,  
To cleanse the  
system,  
Effectually  
and Gently;

Dispels colds and  
headaches when  
bilious or con-  
stipated;  
For men, women  
and children;

There is only  
one Genuine  
Syrup of Figs;  
to get its bene-  
ficial effects

Acts best on  
the kidneys  
and liver  
stomach and  
bowels;

Always buy the genuine—Manufactured by the

# CALIFORNIA FIG SYRUP CO.

Louisville, Ky.

San Francisco, Cal.

New York, N.Y.

The genuine Syrup of Figs is for sale by all first-class druggists. The full name of the company—California Fig Syrup Co.—is always printed on the front of every package. Price Fifty Cents per bottle.

Sold By

# HOBBRON DRUG CO., Sole Agents

EHLERS BLOCK, FORT STREET

**Curios! Curios!!**  
 Hats, mats, fans, shells, Hawaiian jewelry, menu cards painted to order and in fact everything in the line of curios can be had at reasonable prices at

**WOMAN'S EXCHANGE**  
 Hotel Street near Fort

**Kreso**

New Disinfectant.

The latest disinfectant for use in  
 BATH ROOM  
 SICK ROOM, SINKS,  
 CLOSETS, CESSPOOLS,  
 GARBAGE BOXES,  
 STABLES, DOG KENNELS

Destroys Germs, Purifies and Prevents Disease. Easy to use.

50 cents a Pint

Sold By

**CHAMBERS DRUG CO., LTD**  
 Corner Fort and King Sts.

**Women Should Know**

The value of a good beer in the home—many are prejudiced against it without cause. Drinkers of



Will tell you there is new strength and vigor in every drop.

**RAINIER BOTTLING WORKS,**  
 AGENTS FOR HAWAII.

PHONE WHITE 1331  
 P. O. BOX 517.



HAVE YOU SEEN  
 THE NEW MODELS

**4 and 5**  
**Underwood**  
 Typewriters?

WE HAVE THEM.

ALSO

**SUPPLIES**

FOR ALL  
 MAKES OF

**MACHINES**

**Pearson & Potter**  
 Co., Ltd.

931 Fort Street

**NEW ADVERTISEMENTS**

Henry Waterhouse Trust Co. Page 5  
 Concert Page 5  
 N. S. Sachs Dry Goods Co. Page 5  
 E. O. Hall & Son Page 5

**NEWS IN A NUTSHELL**

Paragraphs That Give Condensed News of the Day.

**THE WEATHER.**

Weather Bureau, Punahou, 1 p. m.  
 Wind light south to southwest; weather cloudy and rainy.

Morning minimum temperature, 45; midday maximum temperature 73; barometer 9 a. m. 29.79 (irregular corrected for gravity); rainfall, 24 hours ending 9 a. m. 7.51 absolute moisture 9 a. m. 7.7 grains per cubic foot; humidity 9 a. m. 85 per cent.

R. C. LYDECKER,  
 Territorial Meteorologist.

Combination billiard and pool table at E. O. Hall & Son.  
 Small furnished cottage is wanted. Address M. R. Star Office.

Estate administered competently and economically by the Henry Waterhouse Trust Co.

On account of the weather the Olive Branch Dance scheduled for tomorrow night has been postponed.

The Valentine and leap year social of the Y. M. C. A. will be held at the Y. M. C. A. Saturday evening.

Yokomizo and Kashiyabara contractors are located at Emma Hall corner Nuuanu and Beretania streets.

The last chance to hear Friedenthal the eminent pianist will be at Punahou hall Saturday afternoon at 2:30 p. m.

The Symphony Club Orchestra will practice this evening at the club house at 7:30 o'clock. Gerard Barton will lead.

Mrs. Mary Roberts Smith will give a lecture and song recital on old English ballads at the Alexander Young Hotel Friday evening, Feb. 26, at 8 o'clock.

J. L. Hopwood chaplain of the Kamehameha Schools is the Problem Club speaker tonight at 6:40. "Some Tests of Life" is his subject. Supper will be served at 6.

Some say its raining cats and dogs but Sachs' Co. says that bargains are reigning supreme at their store this week. Blankets, comforters, counterpanes and towels at immense reductions.

The afternoon social of the Ladies' Society of Central Union church will be held at the residence of Mrs. Andrew Fuller this afternoon from three to six o'clock. A cordial invitation is extended to all ladies of the church to come, bringing their friends.

Mrs. Mary Gunn's leap year dance has been postponed, on account of the uncertainty of the weather until Tuesday evening. The date was originally set for tomorrow evening but Kona wind and rain with prospects of more have determined Mrs. Gunn to wait until more settled weather.

**WERE LICENSED BY INSPECTORS**

RATING VARIOUS ISLAND SEAFARING MEN—OLD CAPT. SAM GETS SECOND MATE'S PAPERS.

The Federal Inspectors of Hulls and Boilers will complete their work in this port on Saturday. They will take the steamer to San Francisco on Tuesday.

The following licenses and advances have been granted to various people operating about the island: John Schmidt, to be master ocean steamers up to 2,500 tons, and master of sailing vessels.

Sam Mana to be second mate Hawaiian inter-island vessel of 400 tons.

David H. Nalpo to be second mate any ocean steamers of 500 tons.

F. R. Breed to be mate any ocean steamers.

Louis B. Reeves to be third mate any ocean steamer, second mate 500 tons.

Ralph H. Caughell, from mate to be master and pilot vessels up to 1,500 tons.

Louis Self, from chief mate to be master and pilot 500 tons.

John M. Radway to be master and pilot Hawaiian island steamers, and chief mate any ocean steamer.

Jacob Wagner, from first assistant engineer to chief engineer.

F. M. King, from first assistant to chief engineer of 1,500 tons.

John Grace, third assistant island steamers 650 tons.

Thomas S. Sullivan, first assistant any steamer up to 2,500 tons, and chief island steamers up to 1,000 tons.

Richard Leach, second assistant island steamers, 650 tons.

Charles J. Lynch, second assistant island steamers, 650 tons.

Ben Bernbach, third assistant ocean steamers, first assistant Hawaiian island steamers.

Thomas Britton, second assistant Hawaiian island steamers, 1,000 tons.

Harry F. Mochle, first assistant ocean 2,500 tons, chief island, 750 tons.

Alexander Nichol, third assistant ocean, first island steamers 500 tons.

J. P. Lynch, first assistant ocean, chief island.

D. J. Read, second assistant ocean.

R. C. Kennedy, at Hilo, joint pilot and engineer of gasoline launch.

Patrick Fitzgibbon, assistant engineer gasoline engine 250 tons.  
 Harry L. White, same rating.  
 The only vessels that now remain to be inspected are the steamers J. A. Cummins and Nihaun, tug Fearless and gasoline launch Aialoa.

**TRANSPORT SAILED TODAY.**

The transport Sheridan sailed this morning for Guam and Manila. The bar was pretty lumpy but the big transport did not strike. A heavy swell was running during the morning and the passengers probably found it very disagreeable after leaving port.

**HONOLULU STOCK EXCHANGE.**

Quotations.	Bid.	Asked.
C. Brewer & Co.	18.50	\$25.00
Ewa Plantation	18.50	185.00
Hawaiian Agri.	20.00	14.00
Hawaiian Sugar	20.00	20.00
Honokaa	20.00	27.00
Kahuku	20.00	27.00
Kihel	20.00	27.00
McBryde Sugar Co.	20.00	27.00
Oahu Sugar Co.	20.00	27.00
Pepeekeo Sugar Co.	20.00	27.00
Pioneer Mill Co.	20.00	27.00
Waihua Agri.	20.00	27.00
Waimanalo	20.00	27.00
Inter-Island	20.00	27.00
Hawaiian Electric	20.00	27.00
Hon. Rapid Transit Co.	20.00	27.00
Hawaiian Govt. St.	20.00	27.00
Hon. Rapid Transit St.	20.00	27.00
Ewa Plantation St.	20.00	27.00
Oahu R. & L. Co. St.	20.00	27.00
Waihua Agri. St.	20.00	27.00
Kahuku St.	20.00	27.00

**BEETS UP AGAIN.**

By Cable to the Planters' Association. From Williams, Dimond & Co. The London price of 88 analysis beets this day is 7 shillings, 9 pence. The last previous quotation was February 8, 7 shillings, 7 1/2 pence.

**FRIEDENTHAL MATINEE.**

A matinee piano recital especially arranged for students will be given at Punahou Hall Saturday afternoon at 2:30. Seats can be reserved at Wall, Nichols Co. This will probably be the last opportunity of hearing the great Friedenthal in Honolulu for years at least and students and amateurs should avail themselves of this chance.

Admission will be 75c, students at 50c. As a special treat, Friedenthal will play the famous Moonlight Sonata by Beethoven and many other well known compositions will be included in the program.

**GRAND JURY.**

The Grand jury this morning met again. A number of House vouchers witnesses were in attendance again. The matter of Mrs. Turk charged with an assault with a pistol on her husband, is now in the hands of the jury.

**MOTION DENIED.**

Judge De Bolt this morning gave a ruling denying the motion to rehear the motion for a new trial in the case of Mrs. Theresa Wilcox vs. Q. H. Berrey.

**RUSSIA YIELDS A POINT.**

Associated Press, Morning Service. WASHINGTON, February 11.—Russia announces that she will acquiesce in the neutralization of China. Admiral Cooper's squadron has been ordered to Shanghai and thence to Chemulpo.

The United States Minister to Korea has been transferred to Tokio.

**LOST BRIDGE**

The bridge at Moiliili, which was built when the Rapid Transit company extended its lines in that direction, has been split in two by the rain water and is impassable. One car is on the Waialae side of the bridge and will not be able to come back until repairs are made. The cost of this bridge and the one washed away at Waikiki will be at least \$10,000, it is estimated.

**RUSSIANS WERE PATRIOTIC.**

Stanlaus and Dofskos, Russians, got mad yesterday in a restaurant on Punahou because a young Portuguese expressed sympathy with Japan. They are alleged to have attacked and bitten the fellow. They were before Judge Lindsay today but their cases were continued until tomorrow.

**CORPORATION MEETINGS.**

Pioneer Mill Co., Ltd., will hold its annual meeting on Saturday February 27 at 10 a. m. at the office of H. Hackfeld & Co.

**OLD VALLEY.**

S. I. Shaw & Co., 10 King street, are sole agents for Old Valley Whiskey. This whiskey has been on the market for over 40 years and has met with unqualified approval.

GOOD PLUMBING is our forte, we don't do cheap work. You will find an exhibition in our store, all the latest fancy designs in bath room apparatus. We carry everything that goes to make up that most important part of a dwelling—the bath room—AND WE INSTALL IT RIGHT. Our plumbing is put in to last, we guarantee all work done by us, and can quote you the names of hundreds of satisfied customers.

It costs no more to have your plumbing and sewer connections done by us, and remember WE GUARANTEE THE WORK.

BATH THE Plumber, 165 King Street, Telephone 61 Main.

**A Home Company** Capital \$50,000

Organized under the laws of the Territory of Hawaii.

THE HAWAIIAN REALTY AND MATURITY CO., LTD.

Loans, Mortgages, Securities, Investments and Real Estate. Homes Built on the Installment Plan.  
 Home Office—McIntyre Building, Honolulu, Territory of Hawaii.

**The Hawaiian Realty and Maturity Co.**

L. K. KENTWELL, General Manager.

**James F. Morgan,**

AUCTIONEER AND BROKER

447-857 Kaahumanu St. Tel. Main 12. P. O. Box 694.

**Tug "ELEU" AT AUCTION.**

By order of C. S. Holloway, Superintendent of Public Works, I will sell at Public Auction, at Brewer's wharf, Honolulu,

ON MONDAY, FEB 15, AT 12 O'CLOCK NOON, THE TUG "ELEU"

with machinery and fittings complete as she now lies in the harbor of Honolulu, ready for service.

The vessel will be offered at an upset price of \$5000.

Terms: Cash, U. S. Gold Coin.

Intending purchasers can inspect the vessel on applying to Capt. A. Fuller, at Harbor Master's office, Custom House building, Honolulu.

JAS. F. MORGAN, AUCTIONEER.

**S. I. Shaw & Co.,**  
 10 King Street  
 SOLE DISTRIBUTORS FOR HAWAII

**Honolulu Iron Works,**

STEAM ENGINES, SUGAR MILLS BOILERS, COOLERS, IRON, BRASS AND LEAD CASTINGS.

Machinery of Every Description Made to order. Particular attention paid to Ship's Blacksmithing. Job Work Executed on Short Notice.

Want ads in Star cost but 25 cents.

**Flower Pots AND Fern Pots**

Plain and Fancy in all sizes. Now is the time to do your transplanting. The weather conditions are suitable and no more favorable opportunities will offer throughout the year. We can furnish you with any and all sizes and styles of flower and fern pots that you may require.

**Stoneware**

Have you seen the many new articles that have just come in? The display in our large window is an attractive one.

**W. W. Dimond & Co., Ltd**

Sole Agents for the FAMOUS JEWEL STOVES and the CELEBRATED GURNEY REFRIGERATORS.

**VALENTINES**

Larger assortment than ever. Come early and get the pick. Sweethearts should not forget the FOURTEENTH OF FEBRUARY.

Cupid will take orders at

WALL, NICHOLS CO., LTD.

**Whitney & Marsh**

**Ladies' Knit Vests And Union Suits**

We have a complete line of these goods, and from a fine quality white ribbed vest at

10 Cents

To the Italian-silk embroidered at

\$8.50

**New Embroideries**

Including fresh patterns in the CORSET COVERINGS.

SEE OUR WINDOW DISPLAY.

**C. BREWER & CO., LIMITED**  
 QUEEN STREET, HONOLULU H. T.

**AGENTS FOR...**

Hawaiian Agricultural Company, Onomea Sugar Company, Honomu Sugar Company, Wailuku Sugar Company, Ookala Sugar Plantation Company, Haleakala Ranch Company, Kanapala Ranch.

Planters' Line Shipping Company, Charles Brewer & Co.'s Line of Boston P kets.

**LIST OF OFFICERS.**  
 Charles M. Cooke, President  
 Geo. H. Robertson, V. Pres. & Mgr.  
 E. Faxon Bishop, Treas. & Secy.  
 W. F. Allen, Auditor  
 F. C. Jones, Director  
 H. Waterhouse, Director  
 G. R. Carter, Director  
 All of the above named constituting the Board of Directors.

**BEAVER LUNCH ROOM,**  
 Fort Street, Opposite Wilder & Co. H. J. NOLTE, Prop'r.

First-Class Lunches served with tea, coffee, soda water, ginger ale or milk. Smokers Requisites a Specialty.

**T. OKUBO**  
 Carpenter and Cabinet Maker

Picture Frames and Bamboo Furniture. Neat and Handsome Designs Made to Order.  
 Beretania Street near Emma.

**WON TAI CO.**  
 118 King Street, near Maunakea.

House Painting, Paper Hanging and Decorating Done by First-Class Workmanship. Prices Reasonable.  
 PHONE WHITE 89L

Star Want ads pay at once.

**ALEXANDER & BALDWIN LTD.**

**OFFICERS**

H. P. BALDWIN, President  
 J. B. CASTLE, First Vice-President  
 W. M. ALEXANDER, 2d Vice-Pres't  
 J. B. COOKE, Treasurer  
 W. O. SMITH, Secretary  
 GEORGE R. CARTER, Auditor

**Sugar Factors and Commission Merchants**

**AGENTS FOR**

Hawaiian Commercial and Sugar Company, Haku Sugar Company, Paia Plantation Company, Nahiku Sugar Company, Kihel Plantation Company, Hawaiian Sugar Company, Kahului Railroad Company.

**—AND—**

The California and Oriental Steamship Company

Star Want ads pay at once.

**Insurance Agents**

**AGENTS FOR**

**Castle & Cooke, Ltd**

**Life and Fire**

New England Mutual Life Insurance Co OF BOSTON.

Aetna Fire Insurance Co., OF HARTFORD, CONN.

**HUSTACE-PECK CO., LTD**  
 QUEEN STREET DEALERS IN

**Firewood, Stove, Steam and Blacksmith Coal**

WHOLESALE AND RETAIL. Special attention given to DRAYING ALSO, WHITE AND BLACK SAND

**T. HAYASHI, TAILOR.**

Clothes Cleaned, Dyed and Repaired. 537 Beretania Street, Opposite Queen's Hospital.

**Service for Travellers**

TICKETS AND RESERVATIONS SAN FRANCISCO, CAL.

Any citizen of Hawaii planning a journey which will take him through San Francisco, may have all arrangements made for railroad, sleeper or Hotel accommodations by the Pacific Coast agent of the

**HAWAII PROMOTION COMMITTEE.**

No charge is made for securing Pullman reservations, HOTEL ACCOMMODATIONS, RAILROAD TICKETS. Consult Tourist Information Bureau Hotel Street, or

**F. M. Jenifer,**  
 No. 17 New Montgomery Street, San Francisco, California.