

THE GARDEN ISLAND
Issued Every Tuesday

KEÑNETH C. HOPPER - - - Managing Editor
TUESDAY - - - - - SEPT. 30

A SANE IMMIGRATION POLICY

The old time generous theory that America should be an asylum for the oppressed of all the world, and should stand ready to welcome with open arms any and all who couldn't get along at home—this very pretty philanthropic theory has come to an economic finish.

When there were broad stretches of public land waiting to be developed; when labor was scarce and very much in demand; and when people seemed to be the one lacking factor of our national development—we closed our eyes to the evils of indiscriminate immigration, and gladly took everything that came.

New things are changed. The supply of public land is exhausted; we don't need foreign labor so much, and we are becoming very doubtful about the quality of it anyway; our cities are congested with aliens; we have failed to assimilate great masses who have come over heretofore; and a great many of them are physically and morally undesirable.

These things are beginning to set the immigration problems before us in a different light, and more and more we are being convinced that there must be some more effective supervision and restriction of immigration.

We are required to love our neighbors, but not to our own undoing. An altruism that is suicidal is folly. In our own interest, but in the interest of the world at large as well, and of free institutions, and of civilization itself, we must guard our country against the moral and physical degeneracy of Europe or the Orient. Whatever it may have been in the past, our backyard is no longer large enough to be used as a dumping ground for the refuse of other peoples and races, and we will have to put up a sign to that effect, and see to it that the injunction is heeded.

BEWARE OF THE SMOOTH STORY

The trial and conviction of a would-be criminal, a mining stock agent, reported elsewhere in this issue, again emphasizes the folly of even listening to the plausible stories of such smooth gentlemen. As long as there are simple and gullible people who can be readily caught by such designing dealers, they will be on hand to catch them.

Our own home investments are among the best, as well as the safest in the world—why should we go abroad for wild cat things in Nevada or Montana? In putting our money into our own home enterprises we not only have the satisfaction and security of seeing where it goes; but we also have the satisfaction and security of dealing with men

whom we know, more or less, and who have well established reputations for honesty and integrity,—men who are going to stay right here with the investments they sell. The man who comes from heaven knows where by one steamer, and departs thither by the next, with no other recommendation than a smooth tongue and a plausible story. Beware of him.

Kauai Democrats

From the New Freedom, Hawaii's only Democratic paper.

The wail of a certain small clique of so-called Democrats on Kauai over the fate of ex-School Commissioner Knudsen is amusing, but need hardly cause any surprise. In fact, in view of the caliber of the man elected by the Kauai Democrats at the last election to represent them in the local legislature, nothing that the small bunch of collar-bound Democrats on Kauai might do would surprise us.

Governor McCarthy's action in the Kauai school fracas meets with the hearty approval of all intelligent people here who object to espionage and Black Hand tactics in our local school government. It seems, however, hardly in accordance with poetic or any other kind of justice that Mrs. Burke, who was pronounced innocent of the charges preferred against her, should be transferred against her wishes to a new field of labor, while her enemies in the Kauai schools still remain at their old posts.

As this paper suggested some time ago those making the unfounded and trumped-up charges should have been separated from their jobs with the department, and this applies to the school commissioner, the supervising principal and the smaller fry. Surely the Kauai people will not stand for having their children educated at the hands of liars and purjurers. And of all the vicious things that walk this earth none is worse than the character-detracting liar. St. John in his Revelations at Patmos was about right when he graded sins and sinners in the following order: Liars, murderers, whoremongers, etc. There should be a clean sweep on Kauai, and the sooner this is done the better will it be for educational interest on the Garden Isle.

A TELEPHONE CONVERSATION.

Yes, dear Algernon, it was on Kauai. "Hello; HELLO; HELLO; Whatsa malla you?? Who you likee? HELLO! HELLO! PEHEA YOU LIKEE? Me no sabby. HE NO SITTOP." The telephone receiver was held to his ear, but it was in a reversed position.

NOTICE
Kauai Service

The S. S. "MAUNA LOA" will be temporarily withdrawn from the Kauai service, from October 5th, 1919.

The following schedule to the leeward parts of Kauai will be maintained, commencing Monday, October 6th, 1919, and until further notice:

S. S. "KINAU"—Leaves Mondays at 5 P. M., taking passengers, mail and freight for Nawiliwili and Ahukini. Returning, leaves Nawiliwili on Tuesdays about 5 P. M. for Honolulu direct.

Leaves Thursdays at 5 P. M., taking passengers and mail only for Nawiliwili, and taking passengers and freight for Koloa, Port Allen and Waiimea.

Returning, leaves Waiimea Saturday A. M., calling at Port Allen and Nawiliwili, leaving Nawiliwili about 5 P. M. the same day. Arrives Honolulu Sunday A. M.

Inter-Island Steam Navigation Co., Ltd.
Honolulu T. H., Sept. 27, 1919.

VALVOLINE
Lubricating
OILS

For all kinds of Engines and Machinery are Petroleum Lubrication Oils, refined especially for designs of gas and steam cylinders. A Special grade for your Engine

Your dealer has it or can get it

Honolulu Iron Works Co.
Wholesale Distributors Honolulu

Kapaia Garage Co.

EXPERT

Automobile Repairing And
Machine Work

STORAGE BATTERIES REPAIRED AND RECHARGED
VULCANIZING

Telephone 258 L P. O. Box 236

Ladies'
White Canvas
Oxfords



White Neolin Soles with low Rubber Heels

\$6.50

These shoes are neat and fashionable and one of the best shoes for general wear on the market today.

Manufacturers' Shoe Store
1051 Fort Street, Honolulu, T. H.

When in Honolulu stop at

The Blaisdell
EUROPEAN PLAN

Running water in every room; rooms singly or with baths; comfortable beds; close to best restaurants and all car-lines. Highest class service. Centrally located in the theatre and shopping centers.

J. F. CHILD, Proprietor

ELEELE STORE

J. I. SILVA, Prop.

ALWAYS LEADS IN LOWEST PRICES ON

Dry Goods, Boots and Shoes,
Mens Furnishings, Cigars and
Tobacco, Notions of all kinds.

MAIN STORE, ELEELE, PHONE 72 W. BRANCH, STORE KALAHEO HOMESTEAD

Order It By Mail!

Our MAIL ORDER DEPARTMENT is exceptionally well equipped to handle all your Drug and Toilet wants thoroughly and at once.

We will pay postage on all orders of 50¢ and over, except the following:

Mineral Waters, Baby Foods, Glassware and articles of unusual weight and small value.

Non-Mailable: Alcohol, Strychnine, Rat poisons, Iodine, Ant poison, Mercury Antiseptic Tablets, Lysol, Carbolic Acid, Gasoline, Turpentine, Benzine and all other poisonous or inflammable articles.

If your order is very heavy or contains much liquid, we suggest that you have it sent by freight.

Benson, Smith & Co., Ltd.
"Service Every Second"

The Rexal Store Box 426 Honolulu

FULLER'S

Rubber -- cement
FLOOR PAINT

An elastic and tough floor coating which dries with a firm hard gloss.

Spreads easily
Covers well
Extremely durable

The finished surface can be washed innumerable times and the paint will not crumble or lose its gloss.

Send for card of colors

Lewers & Cooke, Ltd.

Lumber and Building Materials
169-177 So. King Street Honolulu

Theo. H. Davies & Co., Ltd.
HONOLULU and HILO

Sugar Factors and Commission Merchants

IMPORTERS OF GENERAL MERCHANDISE

GENERAL HARDWARE

Builders' Hardware	Crockery	Glassware	Silverware
Sporting Goods	Fishing Tackle	Firearms	Ammunition
Safes	Refrigerators	Spark Plugs	Flashlights
Paints	Varnishes	Brushes	Oils
Harness	Saddlery	Roofing	Trunks
		etc.	etc.

GROCERIES

Fancy and Staple Lines, Feed, etc.

DRY GOODS

Shoes Toilet Supplies Stationery etc. etc.

INSURANCE AGENTS

Writers of Fire, Marine, Compensation, Automobile and Miscellaneous Insurance Policies.

AGENTS FOR

Canadian-Australian Royal Mail Steamship Line

Upon application information will be cheerfully furnished in regard to any of our lines in which you may be interested.

FLSK

E. O. HALL & SON Ltd.
HONOLULU
Distributors
for the
TERRITORY OF HAWAII
Get our latest prices

TIRES

We are now Hawaiian representatives for the products of

Mineral Products Co.

and within two weeks from now will be able to make deliveries from our warehouses

85% Magnesia Blocks
CEMENT
Pipe Covering
Asbestos Cement

Catton, Neill & Co., Ltd.
Queen and Alakea Sts. Honolulu

Waimea Stables
LIMITED

Up-to-date Livery, Draying and Boarding Stable and Auto-Livery Business.

AUTOMOBILE STAGE-LINE
BETWEEN LIHUE and KEKAHA

Leaving Lihue every Tuesday, Wednesday and Friday,
Leaving Kekaha every Tuesday, Thursday and Saturday.

ARRIVING AT THEIR DESTINATION IN THREE HOURS
ALFRED GOMEZ, Manager.

Telephone 43 W Waimea P. O. Box 71

TERRITORIAL MESSENGER SERVICE
TAKES ORDERS FOR ALL KINDS OF

Dry Cleaning and Laundry Work

SEND BY PARCEL POST TO
1112 UNION ST. HONOLULU

"Transact your business with a real live Trust Company, whether it is in the purchase or sale of real estate; the placing of a loan; a stock or bond transaction, or a matter of insurance.

We invite your correspondence

Henry Waterhouse Trust Company, Ltd., Honolulu
The leading Trust Company in the Territory of Hawaii."

"A Suit is no older than it looks"

There is every evidence of HIGHER CLOTHING prices—The very reason why you should not discard a garment until worn out.

Let us fix it up!

Cleaning — Mending — Pressing and Dyeing by experts, is our specialty.

Particular attention to mail orders

French Laundry
J. ABADIE, Prop. Honolulu.

Honolulu Music Co. Ltd.
JAMES W. BERGSTROM, Manager

Ampico Reproducing Pianos, Knabe, Fisher, Haines and Kroeger Pianos, Victor and Columbia Machines and Records.

Latest Sheet Music and Player music rolls, Pianos and Player Pianos on small monthly payments. Pianos tuned and repaired and rented by **Jack Bergstrom**, Kauai agent.

Honolulu Music Co. Ltd.
Telephone - - Lihue Hotel.

Taking Back Men From Service

Is Hawaii recreant or remiss in its patriotic duty, even in the aftermath?

The Honolulu Chamber of Commerce is sending out a circular letter to its members advising them of the fact that the Assistant Secretary of War complains "that not a single firm from Hawaii is represented on a long list of corporations, firms and individuals that have agreed to take back, or had taken back, all their employees who had served in the war." The inference is that because Hawaii does not appear on the list, we are remiss and delinquent.

This is the first we have heard of any such list, or any such requirement. We could not be expected to know by instinct or intuition that such information was wanted at headquarters, and that we would be black-listed if it was not forthcoming.

We feel confident that when the facts are brought to light they will prove that Hawaii stands in the forefront of patriotism in this respect as in all others, and that every man, almost without exception, who wanted to come back to his old job found it waiting for him.

Lihue School Observes Constitution Day

"Constitution Day" was observed at Lihue school with appropriate exercises last Wednesday morning.

The heavy work of getting the school in ship shape for the coming year made it necessary that the program be somewhat brief, but the pupils responded with hearty cooperation and showed a keen interest in the proceedings.

Mr. J. O. Warner, executive secretary of the Kauai Y. M. C. A., delivered an able address on the Constitution of the United States. Both teachers and pupils were deeply impressed and now see a deeper, truer meaning in the preamble of this wonderful document that safeguards our liberty.

Low Prices for Rubber

India rubber, although one of the most indispensable articles of commerce and industry, seems to be an exception to the universal law of high prices. In 1911 it was a dollar a pound; in 1913 80 cents, and now it is down to 40 cents.

This anomalous condition is the result of the fact that much more rubber was produced, and that there was a great falling off among the Central European powers in its use, because of the war,—they couldn't get it. Now however, with more normal conditions of transportation, the demand will increase, and the price advance.

Hawaii has large investments embarked in Malay rubber ventures, and is accordingly much interested—meanwhile there are no dividends.

Don't Lose Sight!

of the fact that I have a qualified

Eyesight Specialist

at your service

My personal guarantee goes with all the work done, backed up by a reputation, gained during 25 years on the islands, for A FAIR AND SQUARE DEAL.

If your eyes trouble you, or you need to change your glasses, come and consult me. For appointments, write

S. E. LUCAS
OPTICIAN
Kapaa, Kauai

TONIGHT
TIP TOP THEATRE

William Fox Presents

MADLAINE TRAVERSE

—IN—

"The Danger Zone"

A Powerful Drama of a Woman's Battle Against Her Past

Pathe Weekly News Pictorial

THURSDAY, OCTOBER 2

William A. Brady Presents

Carlyle Blackwell and Muriel Ostriche

IN

"SALLY IN OUR ALLEY"

ALSO

First Episode of "THE HAND OF VENGEANCE"

Amazing Serial of Mystery

Pathe Weekly News Pictorial

SATURDAY, OCTOBER 4

DOROTHY GISH

—IN—

"Peppy Polly"

An Amusing and Farcical Photoplay

ALSO

Sixth Chapter of "The Brass Bullet"

Pathe weekly News Pictorial

FRIDAY, OCT. 3 AND SUNDAY, OCT. 5

Mary Pickford


America's Sweetheart of the screen

—IN—

"Captain Kidd, Jr."

A genuine success and a whimsically delightful offering

Pathe Weekly News Pictorial



MARY PICKFORD
as "Capt. Kidd, Jr."

If you have anything to sell, or there is something you want, put a little notice in the Garden Island, and you will get results. It does not cost much.

War Savings Stamps

Lihue Branch
Bank of Hawaii, Ltd.

Thrift Stamps

Announcement

H. T. Tong wishes to announce to the public that he has taken over the Tip Top Tailor Shop formerly owned by Ma Lum and Chang Yuk and from now on the said business will be run under his own management and under his direct supervision.

For the busy man of affairs the
CORONA
Standard Folding
Typewriter
is an indispensable necessity
Efficient & Practicable
With all its compactness and durability it does the same high class work as the most expensive machine.
Hawaiian News Co., Ltd.
Agents for the Territory
Young Hotel Bldg. Honolulu

CALIFORNIA FEED CO
LIMITED.
Dealers in
HAY, GRAIN AND CHICKEN
SUPPLIES.
Sole Agents for
International Stock, Poultry Food and other specialties. Arabic for cooling Iron Roofs. Petaluma Incubators and Brooders.
KING'S SPECIAL CHICK FOOD
P. O. Box 452. Honolulu

HOTEL LIHUE
(The Fairview)
Twenty two elegant rooms
In Main Building
Three Airy Cottages
Cuisine unexcelled in country districts
W. H. Rice, Jr.,
Proprietor

Koloa Plantation Store
Wholesale and Retail Groceries
Dry Goods of all Descriptions.
General Plantation Supplies.

"We have not studied cost nor economy as we should, either as organizers of industry, statesmen, or as individuals."
---President Wilson.
But there is yet time to start to save--and that time is NOW.
Bishop & Company
Savings Department
WAIMEA BRANCH
KAUAI

The kindest shoe to tender feet
Dr. Edison
Cushion Shoe
Made of soft kid with cushion insole
\$10
Regal Shoe Store
Fort And Hotel
HONOLULU

- From the Other Islands -
Hilo Now Has Direct Wireless
No longer can there be doubt of the possibility of direct wireless between Hilo and Honolulu, since the successful experiment held there recently which connected with Hilo with the outside world by wireless, according to a report made by the Hilo Tribune of September 20. For the first time in its history, the report says, Hilo was in direct instantaneous connection with the outside world and wireless messages were received from America, Mexico, Japan and Asia without relay, while Pearl Harbor messages were as clear as though sent over a telegraph wire. With a portable apparatus Lieut. R. A. Laird, U. S. navy, and his radio aid, M. A. Mulrony, set up a receiving station, which he states needs no longer be made with lofty towers. Two wires for antennae were strung from the upper lanai of the Hilo hotel to the back yard, one about 100 feet long to receive short wave messages sent by spark, the other about 400 feet long, to receive long wave messages sent on the arc. These wires were connected with the condensers, amplifiers and other apparatus which was set up on a bench. So strong were the messages coming through the receivers that sometimes the signals could be heard above general conversation. According to Lieut. Laird, sending and receiving stations could be set up in Hilo in six weeks after receiving authorization from the government, and this time might even be cut to less, as the apparatus is now at Pearl Harbor. The establishment of a Hilo radio station operating on a wave length conflicting neither with ship to shore service nor trans-pacific traffic, would permit of

almost as prompt and regular service as mainland brokers and press associations obtain over their leased telegraph wires, according to the Tribune. Lieut. Laird is quoted as saying that conditions here and in Alaska are almost ideal for radio work, as there is practically no static, and that an inter-island circuit linking Kauai, Oahu and Hawaii could be operated without interference from ships.—Star-Bulletin.
Chemists Association Prepares for Convention
Arrangements are already under way for the annual meeting of the Hawaiian Chemists' association which will be held in Honolulu November 3 to 6 inclusive. Reports will be submitted on the following subjects: Milling, clarification and filtering, evaporation and boiling, curing and marketing, fireproof efficiency, agricultural chemistry, general topics, methods, by-products, centrifugal clarification, standardization and diffusion. In addition there will

be papers by members of the Hawaiian Engineering association.—Star-Bulletin.
Collect Your Interest
San Francisco, September 15.—The United States Government will pay out more than \$6,000,000 today in semi-annual interest to holders of Third Liberty Loan Bonds in the Twelfth Federal Reserve District. Today's interest payment, added to the two previous interests installments paid on Third Loan Bonds by the Government, gives a total of nearly \$18,000,000 earned since May, 1918 by the \$287,975,000 invested by 1,402,584 purchasers of bonds of the Third Loan in this Federal Reserve district. "Be sure and clip your coupons and cash them," is the advice broadcasted to holders of the Third Loan Bonds by Robert E. Smith, director of the War Loan Organization of the Twelfth Federal Reserve District. Coupons uncashed are idle money. It is no trouble to cash your coupons. Just clip the September 15 coupon off and present it at any bank and you will get your money. It is no more trouble than getting change for a bill.

If all bondholders in America cash their coupons today there will be in circulation tomorrow nearly \$85,000,000 more money than was in yesterday. That is approximately the total amount of interest to be paid out on the Third Loan as a whole today. "Here is a chance for the people to hit high prices a hard blow," said Director Smith. Every man, woman, and child who owns a Third Loan Bond should cash the coupon and immediately buy Thrift or War Savings Stamps or Treasury Savings Certificates which bear more interest than the bonds. Investment of the Third Loan Bond interest at the bank window immediately upon cashing the coupons will keep that \$85,000,000 out of circulation and thus help keep prices down. "I cannot urge too strongly the wisdom of letting the Government keep this interest money and, not only that, but continue buying of War Savings Stamps out of every pay envelope. If everyone in the United States would set aside something each week for War Savings Stamps earning them four per cent interest compounded every three months, it would be a very short time until there would be a noticeable drop of prices."

Visitors Are Very Welcome
In Our Paint Department



Announcing
American Factors
New Line of Paints

Color Cards
will be
sent on
request

We guarantee "American Factors" pure mixed paints to be absolutely pure and the best that can be manufactured from pure lead, pure oxide of zinc, combined with the best quality of coloring matter finely ground by modern machinery in pure linseed oil, turpentine and oil dryers.

This is the New Label

Our first quality pure mixed paints carry this label and are manufactured especially for us by Bass-Hueter Paint Company

Dealers, architects, contractors, painters and artists will be glad to hear that the American Factors have installed a complete and exclusive line of paints, oils, leads, interior oil woodstains, varnishes, automobile varnishes, color varnishes, shingle stains, together with scenic colors, distemper colors, japan and oil colors to be sold under their own label as shown above. These first quality paints are made especially for us by the Bass-Hueter Paint Company of San Francisco.

AMERICAN FACTORS LTD.
WHOLESALE DISTRIBUTORS

Educational Advance

New school plants (in plan or progress) for McKinley High School, Maui High School, Hilo High School, Lihue, Ewa, Wailua, etc., with adequate room, permanent construction and modern equipment.

The new salary schedule provides substantial increases. Compares favorably with Mainland schedules.

Marked improvements in work and programs of the seven Supervising Principals. Emphasis on constructive supervision.

Obsolete "Inspector - General" abolished. A modern "Deputy-Superintendent" created.

Notable improvements in organization and administration of the department office.

Departmental Conferences inaugurated, on important school matters, at which principals, teachers, and others, confer together and with the department.

Creation of an adequate Territorial Trade School, (free and open to boys throughout the Territory).

A comprehensive program of Industrial Education and Home Making (Shop, Kitchen, Garden, Hand-Work), developed throughout the upper grades and high schools. Full time instructors.

Additional rooms provided, so that public school classes shall not be compelled to meet in Japanese Buddhist-language school buildings.

Security of Tenure of the teacher augmented by legislative abolition of the "contract system."

Hearty cooperation in every feasible way, with the programs of such organizations as the United States Boys' Working Reserve; Boy Scouts; Girl Scouts; Y. M. C. A., Y. W. C. A., Territorial Fair; Child Welfare organizations; Territorial Board of Health, etc.

Four free public Kindergartens established under the Department, and local committees, and a recognized part of the public school system.

Noteworthy improvement in Grading, Examining, and Promoting pupils, and in issuing of certificates and diplomas.

Marked improvements in the standards and conduct of Examinations for Teachers' Certificates.

Radical changes in the Summer School plan, and the remarkable session this year at Kilauaea Camp.

Reorganization and raising of standards in Normal School Courses.

Fostering of Teachers' Association and Clubs, for the improvement of the profession and the schools.

Collection of material for Revisions in the Course of Study, to be formulated and published following the Federal School Survey.

Enlargement and improvement of the "Hawaii Educational Review", an educational magazine that is read by every public school teacher.

Vigorous emphasis upon the principles of the United States Government, practical civics, American history, and Americanization.

Music given larger recognition. Expert supervision of music placed on Territorial basis.

Full time Athletic Director for McKinley High School, also serving as director of public school athletics for Honolulu.

Federal School Survey, to take place during the fall of 1919.

Encouragement of the spirit of democracy and comradeship throughout the schools.

Mountains of potash have been found in Pennsylvania which will probably be available for agricultural purposes, and will make the United States absolutely independent of the potash mines of Germany or any other country. Nitrate is also being found in the United States which will free us from our dependence on Chile. This is good news for the sugar industry of Hawaii.

IN THE CIRCUIT COURT OF THE FIFTH JUDICIAL CIRCUIT, TERRITORY OF HAWAII, JANUARY TERM, 1919.

THE TERRITORY OF HAWAII BY LYMAN H. BIGELOW, SUPERINTENDENT OF PUBLIC WORKS, Plaintiff & Petitioner v.

HENRY WATERHOUSE TRUST COMPANY, LIMITED, TRUSTEES UNDER THE WILL AND OF THE ESTATE OF KALEIPUA KANOA, LIHUE PLANTATION CO. LTD., G. N. WILCOX, MRS. ELIZA HOLT, S. K. KAE0, JOHN DOE, MARY DOE, AND RICHARD ROE, Unknown owners and claimants. Defendants & Respondents.

TERM SUMMONS

THE TERRITORY OF HAWAII TO THE HIGH SHERIFF OF THE TERRITORY OF HAWAII, OR HIS DEPUTY, THE SHERIFF OF THE COUNTY OF KAUALI OR HIS DEPUTY.

You are commanded to summon Henry Waterhouse Trust Company, Limited, Trustees under the Will and of the Estate of Kaleipua Kanoa, Lihue Plantation Co., Ltd., G. N. Wilcox, Mrs. Eliza Holt, S. K. Kaeo, John Doe, Mary Doe, and Richard Roe, unknown owners and claimants, defendants and respondents, in case they shall file a written answer within twenty days after service hereof, to be and appear before the said Circuit Court at the term thereof pending, immediate after the expiration of twenty (20) days after service hereof. PROVIDED, HOWEVER, if no term be pending at such time, then to be and appear before the said Circuit Court at the next succeeding term thereof, to wit, the January 1920 term to be holden at Lihue, County of Kauai in the second Wednesday of January next at ten o'clock A. M., to show cause why the claim of the Territory of Hawaii, by Lyman H. Bigelow, Superintendent of Public Works, Plaintiff and Petitioner, should not be awarded to it pursuant to the tenor of this annexed complaint, and have you then and there this writ with a full return of your proceedings thereon.

WITNESS, the Honorable Presiding Judge of the Circuit Court of the Fifth Judicial Circuit, at Lihue aforesaid, this 8th day of September, A. D. 1919.

(Sgd.) J. A. THOMPSON, Clerk Supreme Court Territory of Hawaii, and Ex Officio Clerk Circuit Court 5th Circuit. COUNTY OF KAUALI.

ss.

TERRITORY OF HAWAII

I, JOSEPH ANDRE SOUSA, Clerk of the Circuit Court of the Fifth Judicial Circuit, Territory of Hawaii, do hereby certify that the foregoing is a full, true, and correct copy of the original summons in the case of the TERRITORY OF HAWAII v. HENRY WATERHOUSE TRUST COMPANY, LTD., et al, as the same appears of record and on file in the office of the clerk of said Court.

I further certify that the petition herein prays the condemnation for use for public rights-of-way and warehouse sites for the Nawiliwili Harbor projects, of the following described lands and its appurtenances situate at Nawiliwili, Island and County of Kauai, Territory of Hawaii, to wit:

"Beginning at a + cut in a large boulder at Low Water mark, near "Carter's Point", the coordinates of said point of beginning referred to the Government Triangulation Station "Nawiliwili" being 4197.3 feet South and 2105.6 feet East, and running thence by true azimuths:

1. 81° 27' 4147.0 feet to a rock marked by a + and pile of stones, (From this point the Triangulation Station "Nawiliwili" bears N. 22° 29' 30" E)
2. 156° 50' 2031.0 feet, crossing the Huleia river to a concrete post marking the Southeast corner of the Kahihewa Reservation.
3. 238° 31' 145.8 feet to a peg on the Northwest side of main road.
4. 205° 29' 503.0 feet along the West side of road to bend in fence at gateway to Kaiwi's.
5. 253° 18' 985.9 feet.
6. 214° 15' 201.6 feet along the upper edge of pali
7. 243° 40' 30" 299.7 feet along the upper edge of pali
8. 236° 13' 412.6 feet along the upper edge of pali
9. 226° 29' 30" 206.8 feet along the upper edge of pali
10. 208° 13' 391.3 feet to bend in

concrete wall. 11. 219° 47' 918.4 feet to South corner of Kaeo's kuleana (L.C.A. 5415:3)

12. 231° 18' 30" 217.8 feet along Kaeo's seawall.
13. 199° 32' 257.5 feet to an iron bolt marking the Southwest corner of the Lihue Plantation's wharf lot.
14. 217° 17' 30" 110.0 feet.
15. 313° 17' 30" 21.3 feet along remainder of said lot.
16. 10° 20' 121.0 feet along remainder of said lot.
17. 307° 17' 30" 94.0 feet along remainder of said lot to low water mark
18. 50° 04' 260.2 feet along low water mark.
19. 51° 18' 30" 217.8 feet along low water mark.
20. 30° 47' 87.7 feet along low water mark.
21. 31° 06' 284.8 feet along low water mark.
22. 40° 45' 550.0 feet along edge of coral ledge at low water mark. (At 184 feet this line crosses over a concrete pier.)
23. 34° 12' 30" 125.4 feet along edge of coral ledge at low water mark.
24. 25° 32' 144.5 feet along edge of coral ledge at low water mark.
25. 4° 49' 104.8 feet along the shore line at low water mark.
26. 45° 02' 140.4 feet along the shore line at low water mark.
27. 65° 45' 140.7 feet along the shore line at low water mark.
28. 60° 21' 691.0 feet along the shore line at low water mark.
29. 38° 53' 30" 159.4 feet along the shore line at low water mark.
30. 29° 00' 234.9 feet along the shore line at low water mark.
31. 97° 21' 227.0 feet along the shore line at low water mark.
32. 65° 17' 117.6 feet along the shore line at low water mark.
33. 69° 10' 30" 547.2 feet along the shore line at low water mark.
34. 26° 45' 121.7 feet along the shore line at low water mark.
35. 355° 23' 291.8 feet along the shore line at low water mark.
36. 333° 42' 1125.5 feet along the shore line at low water mark.
37. 327° 17' 331.0 feet along the shore line at low water mark.
38. 298° 04' 30" 324.0 feet along the shore line at low water mark.
39. 275° 50' 462.4 feet along the shore line at low water mark.
40. 267° 40' 30" 606.2 feet along the shore line at low water mark.
41. 260° 52' 809.5 feet along the shore line at low water mark.
42. 250° 53' 30" 223.0 feet along the shore line at low water mark.
43. 267° 43' 30" 480.8 feet along the shore line at low water mark.
44. 239° 28' 146.9 feet along the shore line at low water mark.
45. 267° 31' 516.4 feet along the shore line at low water mark.
46. 276° 30' 172.2 feet along the shore line at low water mark to point of beginning
47. 291° 03' 230.8 feet along the shore line at low water mark

IN WITNESS WHEREOF, I have hereunto set my hand and affixed the seal of said Circuit Court this 13th day of September, A. D. 1919.

SEAL (Sgd.) JOSEPH ANDRE SOUSA, Clerk.

CHEVROLET
For Economical Transportation

You are urged to investigate the economy records, the reputation and the performance of Chevrolet cars because to know all about them is to be convinced that their purchase reflects favorably on the good judgment of their thousands of owners.

Chevrolet "Four-Ninety" Touring Car, equipped with electric lights and starter, highest type two-unit system, single wiring used. Complete lamp equipment, mohair tufted one-man top, top cover and side curtains; tilted windshield; speedometer; electric horn; extra rim and carrier on rear; complete tool equipment, including pump and jack. Foot rest, robe rail, pockets in each door.

Royal Hawaiian Sales Co. Ltd.
DEALERS

Kuraoka & Co.
CONTRACTOR AND CARPENTER

Building, Painting, Moving Buildings and General Carpentering.
Manufacturer of All Kinds of Furniture.
P. O. Box 265 - Lihue, Kauai

JEWELERS

EVERYTHING IN THE SILVER AND GOLD LINE, RICH CUT GLASS AND ART GOODS.
MERCHANDISE OF THE BEST QUALITY ONLY.

H.F. WICHMAN & CO., LD.

LEADING JEWELERS.
P. O. Box 342, Honolulu

JAS. F. MORGAN

Co. Ltd.
Stocks, Bonds,
Real Estate and Insurance
NO. 125-131 MERCHANT ST.
P.O. Box No. 594 Honolulu

Dinnerware From Open Stock

You can buy one piece of dinnerware at the same price it would cost in a 100 piece set. Thus with open stock dinnerware the problem of replacement is solved.

You can start set with a few pieces and then add to them from time to time as your needs remain or your purse permits.

Sample plates for selection sent at your expense
Fifty patterns to choose from at

W. W. Dimond Co., Ltd
"The House of Housewares"
53-65 King Street Honolulu



Copyright Hart Schaffner & Marx

Silva's Toggery, Honolulu.

Good oil is cheaper than parts

"A quart of oil"—any oil—is better than no lubrication.

But why not ask for Zerolene and know that you are getting Correct Lubrication?

Zerolene is correctly refined from selected California crude oil. It keeps its lubricating body at cylinder heat, holds compression, gives perfect protection to the moving parts and deposits least carbon. It is the product of the combined resources, experience and equipment of the Standard Oil Company.

Get a Correct Lubrication Chart for your car. At your dealer's or our nearest station.

STANDARD OIL COMPANY (California)

A grade for each type of engine



Read the Garden Island

Miss Marie Payne has left with the Garden Island a number of excellent books to be sold at ridiculously low prices, among which is a set of Teachers' Cyclopedia, in 8 volumes, and works of fiction by prominent authors. The books may be seen at this office.

NOTICE

The undersigned has rented his residence together with a certain parcel of land in the Waimea Valley to Axel B. Blackstad, to avoid any further trespassing on same, he has full charge of same.

O. BLACKSTAD.
Sole Owner.

DIED

KAKINA—At Lihue Hospital, Friday, Sept. 26th, 1919, Rachael Kakina, aged 19 years.

Announcement

Queen's Hospital Training School For Nurses

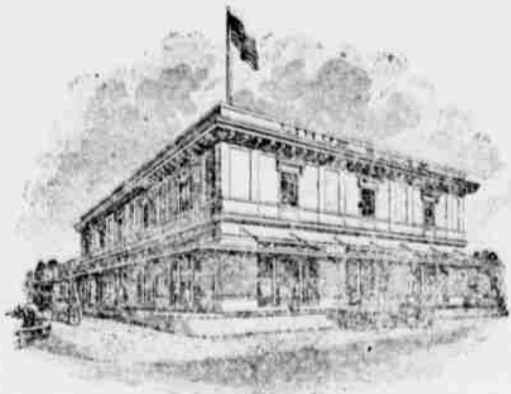
Offers a three years' course of training to young women with two years' high school or its equivalent.

Course includes surgical, medical and obstetrical nursing.

Maintenance and small compensation furnished.

For further information apply to

Superintendent of Nurses
Queen's Hospital, Honolulu



KAUAI'S EMPORIUM

ICE HOUSE GOODS

Direct from San Francisco
Upon arrival of the S. S. "Hyades" at
Port Allen we will have on sale in our
MEAT MARKET

- FRESH SALMON FRESH HALIBUT FRESH SMELT
- FRESH OYSTERS FRESH BELGIAN HARE
- FRESH MILK FED CHICKEN (Capon)
- HEADCHEESE, WESTPHALIAN, POLISH, TONGUE,
- LIVER AND HAM SAUSAGE
- SMOKED SALMON SMOKED EEL
- SCOTCH STYLE HERRING

—AND—
—If the Goods were seasonable and in market at the time—
our order was shipped,
On sale at the

TIP TOP FRUIT STORE

- FRESH—
- CANTELOUPES GRAPES RHUBARB PEACHES
- PLUMS CAULIFLOWER PRUNES
- HONEY DEW MELONS CURRANTS BLACKBERRIES
- LOGANBERRIES

Also, as usual, in our Grocery Department,
ORANGES LEMONS GRAPE FRUIT APPLES ETC.

LIHUE STORE

IN THE CIRCUIT COURT OF THE
FIFTH JUDICIAL CIRCUIT,
TERRITORY OF HAWAII
At Chambers—In Divorce

Toshiko Takata Matsuoka, Libellant,
vs. Tsunio Matsuoka, Libellee.

LIBEL FOR DIVORCE.

Order and Notice of Pending Libel.

Upon reading and filing the libellant's Motion and Affidavit attached thereto to the effect that the address, and, or, residence of the said libellee is not known and that libellant has been unable to ascertain the same after reasonable search and inquiry for more than six months after the filing of the Libel herein.

It is Hereby ordered that notice be given to the libellee above named to appear at my Chambers in the Court Room of this Court in the County Building in LIHUE, Kauai County, Territory of Hawaii, on Saturday, the 22nd day of November, 1919, at the hour of 9:30 o'clock a. m. of said day, and show cause, if any he has, why the prayer of the libellant for a decree of divorce absolutely may not be granted.

It is Further Ordered that notice hereof and of the pendency of the Libel herein be published in the GARDEN ISLAND, a newspaper printed and published at LIHUE aforesaid, at least once a week for six (6) successive weeks.

Dated Lihue, September 9th, 1919.
(SEAL) (Sgd.) LYLE A. DICKEY,
Judge, Circuit Court, 5th Circuit,
Territory of Hawaii.

Attest:
(Sgd.) JOSEPH A. SOUSA,
Clerk.

Sept. 9, 16, 23, 30, Oct. 7, 14, 21, 1919.

IN THE CIRCUIT COURT OF THE
FIFTH JUDICIAL CIRCUIT,
TERRITORY OF HAWAII
In Chambers.

Henrietta Paumano Jimenez (w),
Libellant,
vs.
Anacleto Jimenez (Male Filipino)
Libellee.

LIBEL FOR DIVORCE

Order and Notice of Pendency of Libel
Upon reading and filing the libellant's Motion and Affidavit attached thereto to the effect that the address, or, residence of said libellee is not known and that libellant has been unable to ascertain the same after reasonable search and inquiry for more than six months after the filing of the Libel herein.

It is Hereby Ordered that notice be given to the libellee above named to appear at my Chambers in the Court Room of this Court in the County Building in Lihue, Kauai County, Territory of Hawaii, on Saturday, the 22nd day of November, 1919, at the hour of 9:30 o'clock a. m. of said day, and show cause if any he has, why the prayer of libellant for a decree of divorce absolute may not be granted.

It is Further Ordered that notice hereof and of the pendency of the Libel herein be published in the Garden Island a newspaper printed and published in Lihue, County of Kauai, Territory of Hawaii, at least once a week for six (6) successive weeks.

Dated Lihue, September 5th, 1919.
(Sgd.) LYLE A. DICKEY,
Judge, Circuit Court, 5th Circuit,
Territory of Hawaii.

Attest:
(Seal) JOSEPH ANDRE SOUSA,
Clerk.

Sept. 9, 16, 23, 30.

IN THE CIRCUIT COURT OF THE
FIFTH JUDICIAL CIRCUIT,
TERRITORY OF HAWAII
AT CHAMBERS—IN PROBATE

Probate No. 788.

In the Matter of the Estate of
ROBERT MANTHEI, deceased.

NOTICE TO CREDITORS

Notice is hereby given that Letters of Administration have been issued to BISHOP TRUST COMPANY, LIMITED, as administrator of the Estate of Robert Manthei, late of Makaweli, County of Kauai, Territory of Hawaii, deceased.

All creditors of the deceased, or of his estate, are hereby notified to present their claims, with proper vouchers or duly authenticated copies thereof, even if the claim is secured by mortgage upon real estate, to the said Bishop Trust Company, Limited, at its place of business, No. 924 Bethel Street, Honolulu, City and County of Honolulu, Territory aforesaid, within six months from the date of this notice, which is the date of the first publication hereof; otherwise such claims, if any, shall be forever barred.

And all persons indebted to the said estate are hereby notified to make payment to the said Bishop Trust Company, Limited, at the above address.

Dated at Lihue, T. H., September 2, 1919.
BISHOP TRUST COMPANY,
LIMITED,
Administrator of the Estate of Robert Manthei, deceased.
Philip L. Rice, Attorney for Administrator.
Sept. 2, 9, 16, 23, 30, 1919.

IN THE CIRCUIT COURT OF THE
FIFTH CIRCUIT, TERRITORY OF
HAWAII — AT CHAMBERS — IN
PROBATE.

In the Matter of the Estate of Anna
Kapuniai, late of Waimea, Kauai,
Deceased.

NOTICE TO CREDITORS

Notice is hereby given that Letters Testamentary have been issued to Isaac K. Kapuniai, as Executor of the Will of Anna Kapuniai, late of Waimea, County of Kauai, Territory of Hawaii, deceased. All creditors of said Anna Kapuniai are hereby notified to present their claims, with proper vouchers or duly authenticated copies thereof, even if the claim is secured by mortgage upon real estate, to the said Executor at Waimea aforesaid, within six months from the date of the first publication of this notice or they will be forever barred. All persons indebted to the said Anna Kapuniai are hereby notified to make payment to the undersigned, the said Executor.

Dated at Lihue, September 15, 1919.
ISAAC K. KAPUNIAI,
Executor of the Will of Anna Kapuniai, Deceased.
A. G. KAULUKOU,
Attorney for the Executor.
Sept. 16, 23, 30, Oct. 7.

Rainfall for the Week

Rainfall for week ending Sept. 28:	
Waiahi Power Plant	0.00
Waiahi Intake	0.00
Hanalei	0.22
Kilauea	0.40
Kealia	0.22
Lihue	0.09
Koloa	0.00
McBryde	0.66
Makaweli	0.84
Kekaha	2.22

TO BE DEPORTED

Kawahara, a Japanese who was recently arrested at Hanapepe by the United States immigration officials, is now being held at the immigration station in Honolulu pending deportation to Japan as an undesirable alien. He was arrested in company with a Japanese woman who is also destined to be deported to Japan.

Classified Advertisements

WANTED

Girl or woman to cook and do light house work for family of two and help with care of baby. \$25 per month with board and room. Box 63, Makaweli. tf.

FOR SALE

A KROEGER Upright Piano. In first-class condition. Call at the home of Martin Dreier, Nawiliwili. tf

Four-burner blue flame oil stove. Just the thing for teachers' cottages. Enquire Garden Island office.

Second-hand sewing machine. \$15.00. A bargain. Enquire Garden Island office.

\$200.00 Reward

For information which will lead to the conviction of the person or persons who set fire to the stables of John B. Fernandez at Waipouli on the morning of September 21st, 1919.

Wm. HENRY RICE,
Sheriff County of Kauai.

ANNUAL MEETING

The annual meeting of the Kauai Branch of the Hawaiian Chapter of the American Red Cross will be held at three o'clock in the afternoon, Wednesday, October 1st, 1919, at Eleele Hall.

The meeting is open to the public. All members of the American Red Cross resident on Kauai are entitled to vote.

LYLE A. DICKEY,
Chairman and Secretary. 2t.

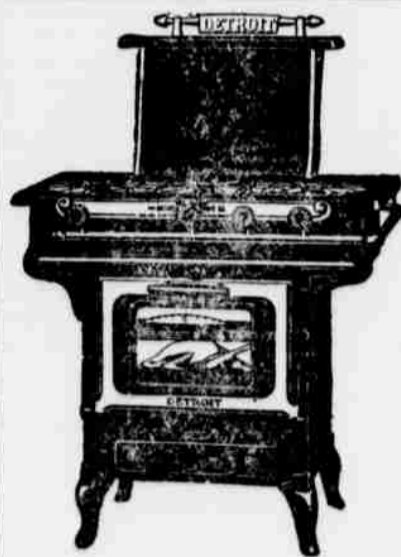
The K. C. Hopper News Agency

Lihue, Kauai

Subscriptions received for
Magazines, Newspapers and Periodicals
from all parts of the world.

All Languages
Foreign and Domestic

Patronize Home Industry and Save Money



This Stove Burns
OIL or GASOLINE

The Detroit-Vapor Stove brings city gas stove convenience into your kitchen no matter where you live.

Simply light the burners and put the cooking on at once—just like a city gas stove. No piping or pressure tanks. Our patented giant burners are wonders. No wicks, asbestos rings or anything that looks like wick. Ten different styles. Write us for further information.

E. O. Hall & Son Ltd.
Honolulu

MASTER
OF
KAUAI
ROADS
GOODYEAR
CORD TIRES



NAWILIWILI GARAGE,
Ching Sai Kee Shido's Store
Waimea Kapaa

At the SIGN

The Red Crown sign means "The Gasoline of Quality"—always dependable. Look for the Red Crown sign before you fill.

STANDARD OIL COMPANY (California)

The Gasoline of Quality