

# HAWAIIAN STAR

Telephone 365 Star Business Office

SECOND EDITION

VOL. XVII.

HONOLULU, HAWAII, TUESDAY, FEBRUARY 8, 1910

No. 5568

## CHAMBER OF COMMERCE ACTS

### MERCHANTS SHOW STRONG FEELING AGAINST LIQUOR

REMARKABLE SHOWING AT A LARGE AND REPRESENTATIVE GATHERING OF BUSINESS MEN YESTERDAY—ONLY HOME RULE ISSUE PREVENTS A STRONG DECLARATION FOR PROHIBITION OR SOMETHING VERY NEAR TO IT.

Whatever happens to this resolution, the issue is going to be forced. It is before the community and we will keep it there. No matter what the vote is today on this resolution, the local campaign against the liquor traffic will be fought to a finish.

The above remarks by W. A. Bowen, acting secretary of the Anti-Saloon League, the effective work of which has stirred all Honolulu, uttered near the close of the Merchants' Association discussion yesterday, when it was apparent that the Prohibition resolution would not carry, was a final word from the temperance forces—a new declaration of war.

bill by 37 to 14 was based on the home rule issue, and was explained as such by most of those of its supporters who spoke at all. Practically every speaker who addressed the meeting against the federal prohibition bill declared either for a local prohibition bill or a much more drastic regulation of the liquor business in Honolulu. The meeting, in view of this fact, is regarded by the temperance forces as a most remarkable showing of their strength in the mercantile community. If the speeches were any criterion, the gathering of leading business men would have carried Honolulu for either Prohibition or something very like it—could the home rule issue have been set aside.

Moved by Geo. W. Smith, seconded, by Mammie Phillips: "Whereas, There is now in Committee of the Congress of the United States certain proposed legislation which, if enacted, will

(Continued on Page Six.)

### Governor Frear Is For Federal Prohibition

SAYS IT WOULD TEND TO WARD OFF, RATHER THAN PROMOTE, GOVERNMENT BY COMMISSION—THINKS PROHIBITION WOULD BE BENEFICIAL AND WOULD TAKE LONG TO SECURE BY LOCAL ENACTMENTS.

GOVERNOR FREAR—"Prohibition would be a very good thing for the Territory in many ways. What seems to be the question is whether it should be obtained from the Federal authorities or from the action of the people of Hawaii.

"On the side of local action the principle of self-government is urged, and on the side of Federal legislation the practical advantage of securing prohibition immediately. It would take a long time, probably, to carry prohibition by local effort, and its proper enforcement would likely not be assured for years.

"I think the relation between the prohibition bill in Congress and any danger of government by commission is very flimsy. In one way Federal prohibition would tend to ward off government by commission, because it would do away with certain evils that might be taken as reason why we should have government by commission."

Thus in substance Governor Frear's reprobation of the saloon evil, summarized up at his conclusion an interesting he sometimes wondered that the esting talk on the dominant issue of people, aware of the train of financial the hour this morning.

Governor Frear was strong in his (Continued on Page Eight.)

### ASKS CONGRESS TO KEEP HANDS OFF LOCAL MATTERS CABLES FROM HATCH AND KUHIO

By a vote of fifty-two to eighteen, Hawaii; and the Chamber of Commerce this afternoon, without debate, adopted the following resolution, presented by E. I. Spalding and seconded by Cecil Brown: "Whereas it is appropriate that the Honolulu Chamber of Commerce should express its opinion on any public question which may affect the commercial interests as well as the general welfare of the Territory of Hawaii; and

### ATKINSON CABLES FROM YOKOHAMA

"YOKOHAMA, FEB. 8. BOARD OF IMMIGRATION, HONOLULU. "316 PEOPLE SAILED MONGOLIA, 50 FAMILIES, 100 EXTRA MEN; PLANNING SHIPMENTS TENYO MARU, 275; KOREA, 400; NIPPON MARU, 275; SIBERIA, 400; OR EACH FULL CAPACITY. "ATKINSON."

The above cable to the Board of Immigration, received this morning, shows that the agents of the Board are meeting with success in their work, despite the efforts of some "knockers" here, who have sent circulars to the Far East advising Russians not to come here.

NEW RICE MILL. The K. Yamamoto Rice Mill is the largest as well as the finest in the islands. All the machinery is of the very latest pattern. The famous Tengu Rice is cleaned at this mill. are able to handle considerable outside particular work which they guarantee.

ROYAL BAKING POWDER Absolutely Pure The only baking powder made with Royal Grape Cream of Tartar No Alum, No Lime Phosphate

ROOM FOR FIVE TOES In this EDUCATOR Shoe in all leathers \$4.00 Manufacturer's Shoe Co., Limited 1051 Fort St. - Honolulu

### DR. COOK FOUND IN BERMUDA

NEW YORK, Feb. 8.—Dr. Frederick J. Cook, who claimed to have reached the North Pole and has been declared a fake, has been located. He is in Bermuda, at a health resort.

WASHINGTON, D. C., Feb. 8.—Grant P. Trent has been appointed associate justice of the supreme court of the Philippines.

WASHINGTON, D. C. Feb. 8.—The resolution providing for a committee to investigate the causes of the great increase in prices of necessities all over the country has been introduced in the senate.

### DEMOCRATS AND SUBSIDY

WASHINGTON, D. C., Feb. 8.—The Democrats in Congress have canvassed upon the ship subsidy proposition and have agreed to support a substitute for the Humphrey ship subsidy bill.

### WELCOME TO ROOSEVELT

WASHINGTON, D. C., Feb. 8.—Republicans here are planning to give a national welcome to ex-President Roosevelt on his return from South Africa.

STOCKHOLM, Feb. 8.—The King is improving.

MANAGUA, Feb. 8.—The insurgents are nearing the capital. The government has evacuated the city. Boaco, which was captured some days ago by the insurgents, has been reoccupied by government forces.

PETAPA, Mexico, Feb. 8.—A number of people have been killed in election riots here.

DO YOU WANT RELIEF? Are you frequently hoarse? Do you have that annoying tickling in your throat? Does your cough annoy you at night, and do you raise mucus in the morning? Do you want relief? If so, take Chamberlin's Cough Remedy and you will be pleased. For sale by all dealers. Benson, Smith & Co., Agents for Hawaii.

REALLY WONDERFUL BARGAINS. Note the remarkable price reductions in ladies wash suits at Sachs this week. These surprising figures told in Sachs' ad in this issue. Hundred of other after-stock-taking bargains also. Don't fail to visit Sachs'.

Have your typewriter, cash registers and adding machines repaired by the Office Supply Co. They have a complete repair department for this work.

### ADMIRAL SEBREE'S GOODBYE

"It is with regret that I leave Honolulu, but it is with many pleasant memories. I wonder if I may hope to return here someday as a tourist. As a tourist I believe I would discover Honolulu's best delights. Hawaii is part of the United States of America. The United States need Hawaii and, I may say, Hawaii needs the United States.

Rear-Admiral Uriel Sebree, Commander-in-Chief of the U. S. Pacific fleet which leaves for San Francisco today, is author of the above sentiment conveyed to a Star representative this morning. Rear-Admiral Sebree, though still young in strategy and capacity for usefulness, retires on the nineteenth of this month.

### THIS IS WHAT SUSPENDED THE COASTWISE LAW, FLAG OR NO FLAG

SAN FRANCISCO, Feb. 1.—The Cleveland will leave here Saturday for the return circle of the globe. Between now and then the liner's stores will be replenished. Among the items that will be placed on board at this port are:

- 350,000 eggs. 53,000 pounds butter. 180,000 pounds fresh meats. 20,000 pounds poultry. 8,500 pounds fish. 750 barrels flour. 900 boxes and barrels of groceries. 1,400 boxes of fruit. 3 carloads of California oranges. 4 carloads California grape fruit. 1 carload lemons. 2 carloads apples. 11 carload pears and grapes. 3 carloads potatoes. 8 tons of sugar. 15,000 quarts fresh milk. 11,000 quart bricks ice cream. 14,000 pounds dried fruits. 43,440 quarts California canned fruit. 15,000 pounds crackers and 70 cases of pickles. While the ship is in port 550,000 pieces of linen will be sent to the laundry. The liner started out with 400,000 bottles of wine and champagne. Most of this is still on board.

Hawaiian Trust Co., Ltd. 923 Fort Street. ACCIDENT POLICY INSURANCE DEPARTMENT. THAT CAR ACCIDENT was unusual only in its manner of happening. Accidents are happening every day in Honolulu. It may be your turn next. Better get an ACCIDENT POLICY INSURANCE DEPARTMENT.

Oceanic Steamship Company Alameda Schedule

Table with columns: LEAVE S. F., ARRIVE HON., LEAVE HON., ARRIVE S. F. listing dates from Feb 12 to May 7.

Connects at Honolulu with C. A. Line for Sydney. C. A. Line leaves Honolulu for Australia Jan. 8, 10 and every 28 days.

RATES from Honolulu to San Francisco—First Class, \$65; Round Trip, \$110. Family Room, extra.

C Brewer & Co., Ltd. GENERAL AGENTS. FOR PARTICULARS, APPLY TO

Canadian-Australian Royal Mail Steamship Co

Steamers of the above line running in connection with the CANADIAN PACIFIC RAILWAY COMPANY between Vancouver, B. C., and Sydney, N. S. W., and calling at Victoria, B. C., Honolulu and Brisbane, Q.

Table with columns: FOR FIJI AND AUSTRALIA, FOR VANCOUVER, listing ship names like MAKURA and MAIKAI with dates.

CALLING AT SUVA, FIJI, ON BOTH UP AND DOWN VOYAGES. Theo. H Davies & Co., Ltd., Gen'l Agents

Pacific Mail Steamship Co. Toyo Kisen Kaisha S. S. Co.

Steamers of the above Companies will call at HONOLULU and Leave this Port on or about the Dates mentioned below:

Table with columns: LEAVE HONOLULU FOR ORIENT, LEAVE HONOLULU FOR S. F., listing ship names and dates from Feb 14 to May 17.

FOR FURTHER INFORMATION APPLY TO H. HACKFELD & CO. LTD

Matson Navigation Co.'s Schedule, 1910 Direct Service between San Francisco and Honolulu

Table with columns: From San Francisco, For San Francisco, listing ship names and dates from Jan 12 to April 12.

For further particulars apply to Castle & Cooke, Ltd., - General Agents

American-Hawaiian Steamship Co.

From New York to Honolulu, via Teahuanape, every sixth day. Freight received at all times at the Company's Wharf, 1st Street, South Brooklyn.

Table with columns: FROM SAN FRANCISCO TO HONOLULU, FROM SEATTLE AND TACO MA TO HONOLULU DIRECT, FROM HONOLULU TO SAN FRANCISCO DIRECT.

UNION-PACIFIC TRANSFER CO. LTD. BAGGAGE, SHIPPING, STORAGE, WOOD, PACKING, COAL. PHONE 85. FURNITURE AND PIANO MOVING.

Firewood and Coal

Best Grades Always On Hand. Concrete Brick, Crushed Rock and Sand.

Hustace-Peck Co. LTD. Phone 295. 63 Queen Street

Shipping Page

EDITED BY J. M. OAT

Mail Steamers to Arrive

Table with columns: Name, From, Due, listing ships like Lurline, Cleveland, Sheridan, etc.

Mail Steamers to Depart

Table with columns: Name, For, Depart, listing ships like China, Sheridan, Cleveland, etc.

Vessels on the way to or from the Islands

Large table with columns: Vessels, At or from, For, Sailed, listing numerous ship names and routes.

TIDES, SUN AND MOON:

New Moon Feb. 9th, at 2:42 p. m.

Table with columns: Date, High Tide Large, High Tide Small, Low Tide Large, Low Tide Small, Sun Rises, Sun Sets, Moon Rises, Moon Sets.

Times of the tide are taken from the U. S. Coast and Geodetic Survey tables. The tides at Kahului and Hilo occur about one hour earlier than at Honolulu.

U. S. S. Colorado, Yokohama. U. S. R. C. Thetis, cruise. (Mercant Vessels.)

Alden Besse, Am. bk., Hilo,—China, S. S. San Francisco. Celtic Chief, Br. shp., Henry, Hamburg, Dec. 5.

Columbian, S. S., Seattle. Erskine M. Phelps, Am. sp., Graham, Port Townsend, Dec. 30.

THE TRANSPORTS.

Buford, ar. S. F., from Hon., Oct. 15. Dix left Hon. for Manila Dec. 28. Logan, sailed from Honolulu for San Francisco Feb. 4.

Thomas, from Hon. for Manila, Jan. 13. Sheridan sailed from San Francisco for Honolulu, Feb. 5.

BACKACHE.

Backache is a very common affliction and is caused by the nerves of the spinal column being affected.

IF YOU WISH TO ADVERTISE IN NEWSPAPERS ANYWHERE AT ANYTIME. Call or Write C. DAKE'S ADVERTISING AGENCY.

Shipping in Port

Table with columns: (Army and Navy), Washington, U. S. S., Yokohama, U. S. S., Tennessee, etc.

HAWAIIAN Macaroni Manufacturing Co., LIMITED

Manufacturers of MACARONI (HOSHI UDON) —AND— BUCKWHEAT (HOSHI SOBA). The Largest and Only Incorporated Concern of Its Kind in Honolulu.

A New Enterprise Launched by Enterprising Merchants.

K. Yamamoto SALES AGENT. Tel. 399. Hotel Street near Nuuanu. P. O. Box 819.

RUBBER STAMPS All Kinds. All Sizes. Hawaiian News Company, Ltd., Alexander Young Building.

MACEY Sectional Bookcases

Why not have a cozy library of your own? You'll need a set of Macey Sectional Bookcases to preserve your fine volumes from cockroaches and keep the books in order.

H. Hackfeld & Co., Ltd. Hackfeld Building. Fort and Queen Streets.



The Hawaiian Star DAILY AND SEMI-WEEKLY.

Published every afternoon (except Sunday) by the HAWAIIAN STAR NEWSPAPER ASSOCIATION. THE STAR ACCEPTS NO LIQUOR ADVERTISEMENTS. SUBSCRIPTION RATES:

Local, per annum \$ 8.00 Foreign, per annum 12.00 Payable in Advance. Entered at Post Office at Honolulu, Hawaii, as second class mail matter.

The Supreme Court of the Territory of Hawaii has declared both THE HAWAIIAN STAR (Daily) and THE SEMI-WEEKLY STAR newspapers of general circulation throughout the Territory of Hawaii, (suitable for advertising proceedings, orders, judgments and decrees entered or rendered in the Courts of the Territory of Hawaii.)

Letters to THE HAWAIIAN STAR should not be addressed to any individual connected with the office, but simply to THE HAWAIIAN STAR, or to the Editorial or Business Departments, according to tenor or purpose. GEORGE F. HENSHALL. EDITOR.

TUESDAY FEBRUARY 8, 1910

Let's see, didn't we tell the liquor men about a year ago that ere long they would be fighting, not to change, but to retain, the present liquor law?

A TIP TO THE REPUBLICANS.

The local Republican party has been needing an issue, to give new life to its organization and members. It has lacked a cause to press before the people, something aside from the endless discussion of jobs and who shall fill them,—a cause to arouse enthusiasm and lift its campaign to higher levels.

And it will be good political strategy, for it will swing the Republican party back into power all along the line, not merely restoring, but adding to, the normal majorities it has lost through blunders and dissensions of the past.

One of the main hopes of those who want to see the Curtis bill defeated in Congress is that the plantation interests will step in and oppose it if its passage becomes imminent, on the ground that it would interfere with their labor supply.

DO COASTWISE REGULATIONS APPLY HERE ANYHOW?

If the San Francisco Chronicle is correct in its statements and conclusions regarding the Cleveland incident, suspension of the coastwise shipping regulations regarding passengers is already in existence, as a policy of the administration and based upon a proposition which makes suspension applicable to these islands.

"Though Collector Stratton will not say what he told the Department nor what the Department told him, nor even whether or not fines will be assessed, the history of the case and the known results may explain matters to Collector Stackable and his people.

"Stackable asked for instructions from the Department. The law was clear and he was told to collect the fine.

"Stratton is a lawyer. He knew the law was passed during the Klondike excitement to keep British steamers from gobbling the passenger traffic to Alaska, for with fares at \$100 or more a head and only a nominal fine of \$2 a head with the existing law for traveling in foreign vessels from port to port in the United States the steamship companies could easily pay the fine without feeling its effect in their profits.

"Senator George C. Perkins introduced and carried through the bill rendering the fine \$200 a head and shut out British competition.

"Deductions point to the likelihood of Stratton having called the attention of the department to the purpose of the law and the fact that the passengers were simply debarking here to go to New York overland, completing their round-the-world trip, suggested that the purpose of the law would not be violated by allowing the Cleveland's six hundred or more passengers to land here without mulcting the steamship company.

"This view was accepted by the department, at least Stratton says his suggestions were all accepted, and the steamship company officials say no fines are to be imposed.

The conclusion here is plain enough: The coastwise regulation was not applied in the Cleveland case because it was not the intent of the law that it should apply to such a case.

A STRIKING SIGN OF THE TIMES.

The most striking fact in connection with the meeting of merchants yesterday to discuss the local liquor question is that not a voice was raised in defense of the liquor side of the subject.

The San Francisco graft trials are certainly in a queerer state than ever now. Heney, who was responsible for them, was defeated in the last campaign by Fickert, for district attorney.

The strength of the Prohibition lobby in Washington is very great. Congressmen from places like St. Louis and Milwaukee, great centers of the brewing business, and others whose positions are for various reasons absolutely secure, do not fear to oppose it, but few others like to be placed on its bad boy list.

Hawaii is not peculiar in having the interference of the liquor interest in politics. It is an old story everywhere, and during the polling season in the recent British elections, W. T. Stead gave the opinion that were it not for the opposition of the liquor interests Asquith would have a majority of four hundred in the House of Commons.

Commercial News

BY L. D. TIMMONS.

There were a number of small features on the Stock Exchange this morning, the principal one being the strength of different stocks. All along the line prices held up and, in some cases, went above previous quotations.

Between boards there were two large sales of Onomea, one of 30 shares and the other of 200 shares. Both were at \$55. For this stock \$55 was bid and \$55.50 asked.

A total of 210 shares Honokaa sold at \$23.125, which was high water mark. On the board this morning \$23 was bid and \$23.50 asked.

Hutchinson appeared to be in some demand, 25 and 5 shares selling on the streets and 5 and 5 on 'Change at \$18.25. More was offered at the same but \$18.25 was the limit of the bidding.

Oahu was strong, 110 shares changing hands on and off the board at \$35.25. At the close of today's session \$35.375 was bid and \$35.75 asked.

Olaa was sold at \$6.50, 110 shares selling. The same was offered for more, but \$6.75 was asked. McBryde sold at \$7.25, although only 15 shares were concerned. More was offered at the same, but only \$7.125 was bid.

A sale of Hawaiian Commercial was made at \$39.25, more being offered at the same. Bidding was at \$39.

A sale of 25 shares Ewa was made at \$34.25, more being offered at the same and \$34 bid.

BREWERY STOCK.

On the Stock Exchange this morning the sale of 50 shares of Honolulu Brewery stock was reported on behalf of A. J. Campbell. The sale price given was \$18. Afterward the same gentleman who so enthusiastically supported the stock yesterday bid \$18 for more, but none was offered.

HONOKAA DIVIDEND.

Stock books of Honokaa plantation will be closed from today until the 15th, and on the latter date a dividend of one half per cent will be paid. There are no prospects of an extra Honokaa dividend before the latter half of the year.

WAIALUA SHOWING.

The annual report of the running of Waiialua plantation will show some remarkable facts. Most gratifying, perhaps, will be the showing that sugar, to produce and market, has cost \$2.93 per ton less than for any previous campaign, or a total for the crop of, approximately, \$92,000.

CHAMBER OF COMMERCE.

The special meeting of the Chamber of Commerce for consideration of the proposed liquor legislation by Congress, is being held at 3 o'clock this afternoon in the Stangenwald building.

NEW UNION GRILL.

Lucas Brothers have begun the work of building a new Union Grill. The rear, between the present kitchen and Cunha's resort, will be built first, after which the front section will be completed.

GENERAL.

C. H. Cooke, President of the Bank of Hawaii, will leave in the Mikahala late this afternoon for Molokai to look over the ranch in which he is interested.

PAPERS FILED.

The following have been filed up to this afternoon for registration: John Paaluhl to Ana M. Gonsaves, lease. Kahoonelina to C. B. Cockett, deed. Bank of Hawaii, Ltd., to W. H. Minton, release. W. M. Minton and wife to Bank of Hawaii, mtg. F. W. Macfarlane, et al., trs., to Annie E. Mott-Smith, et al., release. J. P. Rodgers and wife to Etha D. Duckworth, deed. G. R. Titcomb and wife to William A. William A. Kinney, tr., mtg. The following were filed up to the

closing of the registry office at noon Saturday:

John D. Travis and wife to John D. Paris, deed. Wm. Henning and wife to Bank of Hawaii, mtg. Olaa Sugar Co., thirteen deeds to Spaniards and Portuguese employed on its plantation to homesteads.

Wm. Henry to D. M. Woodward, release. D. M. Woodward and wife to Trent Trust Co., deed. John H. Soper to von Hamm-Young Co., lease.

San Antonio Society to August De J. Fernandez, release. E. B. Mikalemi to Y. Ahn, lease. Kalua Poiomaka and wife to William Hookano, deed. D. Kamalo and wife to Mary A. Bell, deed.

J. K. Kekaula and wife to Abbie K. Maguire, deed. Mrs. Annie Kaolot to A. L. Moses, lease. Lucy He and husband to David H. Makekau, deed.

David H. Makekau to Nora M. Keawe, et al., deed. First Bank of Hilo to E. D. Baldwin and wife, release. W. T. Robinson to James L. Coke, bill of sale.

W. McCandless to Leong Fook, lease. Wm. Savidge, tr., Mrs. Maria Barote, et al., release. Maria Barote, et al to L. L. McCandless, a. m.

Wm. Savidge and wife to Wm. C. Achi, tr., deed. W. C. Achi, tr., Gdn. Leon Sterling, mtg. Pioneer Bldg. & Loan As. to Caroline Haughton, release. James P. Haughton to Rathsheba M. Allen, mtg.

Honolulu Packing Co., Ltd., to Oahu R. & L. Co., lease. STOCK EXCHANGE REPORT. Session Sales—5 Oahu Sugar Co., \$35.25; 50 Olaa \$6.50; 8 McBryde \$7.25; 7 Hutchinsoon \$18.25; 5 Hutchinsoon \$18.25; 5 Oahu Sugar Co. \$30.50; 25 Ewa \$34.25.

Between Boards—30 Olaa \$6.50; 30 Olaa \$6.50; 12 O. R. & L. Co. \$142.50; 200 Onomea \$55.00; 30 Onomea \$55.00; 210 Honokaa \$23.125; 5 Hutchinsoon \$18.25; 60 Oahu Sugar Co. \$35.25; 49 Oahu Sugar Co., \$35.25; 25 Hutchinsoon.

HOUSES FOR RENT. Waiialua 2 B. R. \$20.00. Kaimuki, 2 B. R. 22.00. 729 Kinau, 2 B. R. 30.00. Kaimuki, 3 B. R. 35.00. 1474 Thurston Ave., 4 B. R. 40.00. 1286 Beretania St., 5 B. R. 40.00. 1020 Beretania St., 6 B. R. 45.00.

FURNISHED. Waikane, 4 B. R. \$30.00. Waikiki, 4 B. R. 45.00. Aiea, 3 B. R. 50.00. Pacific Heights, 4 B. R. 50.00. Kaimuki, 3 B. R. 50.00. COLLEGE HILLS. We Still Have a Few of Those Choice Lots in College Hills for Sale.

TRENT TRUST CO., LIMITED. Sugar 4.155c. Beets 12s 9d. Henry Waterhouse Trust Co., Members Honolulu Stock and Bond Exchange. FORT AND MERCHANT STS. TELEPHONE 76.

Island Fruit Co. Expert Shippers Selected Tropical Fruits. 72 King Street. Phone 15.

Table of stock prices including Hon. R. T. Co. 100.00, Mutual Tel. Co. 10.00, Nahaiku Rub. Co. 40.00, etc.

Lots In Fruitvale One Cent Per Square Foot

Or a trifle over for home sites of more than one acre each, adjoining the celebrated Pukele Homestead in PALOLO VALLEY, ten minutes' walk from the car line. These lots are adjoining the beautiful homes of Owen Williams, William A. Rideout, Charles J. Schoening, Edward F. Patten and others.

Chas. S. Desky FORT STREET

PERMANENCY OF COLOR IS ASSURED. If your clothes are dyed by the F. Thomas Dyeing Works of San Francisco, whose Honolulu agent is the French Laundry 258 Beretania Street. J. Abadie Proprietor.

THE BEST CANDY IN HONOLULU IS TO BE HAD HERE. WE IMPORT ONLY THE THE HIGH GRADES AND THE GREATEST NOVELTIES. TRY THE NEW ONES. PALM CAFE. Hotel Street, near Union. Phone 311.

Strop Your Razor and keep the edge keen. We are selling a number of different makes of strops some of them genuine horsehide with a superior grasping texture. They are quite the best we can get. There are others.

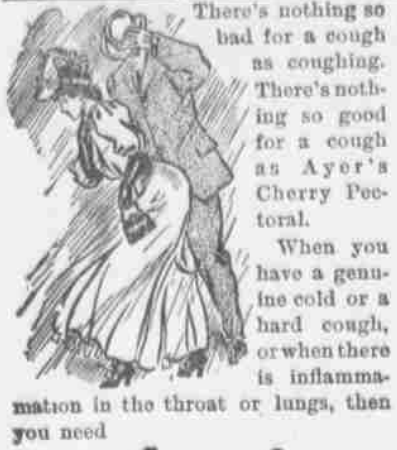
Benson, Smith & Co., Ltd. HOTEL and FORT STS.

The Westinghouse Electric Iron

Saves the trouble of changing irons. Saves the trouble of attending to fires. Does away with the heat from a stove. Does away with smut ordinarily deposited on the iron. Has no delicate parts to get out of order. Has no clumsy attachments to catch the clothing. The ironing can be done wherever electricity is available.

The Hawaiian Electric Co.,





There's nothing so bad for a cough as coughing. There's nothing so good for a cough as Ayer's Cherry Pectoral.

When you have a genuine cold or a hard cough, or when there is inflammation in the throat or lungs, then you need

## Ayer's Cherry Pectoral

It is carefully prepared, accurately compounded medicine for all diseases of the throat and lungs. It contains strong and active ingredients, such as are extensively prescribed by the medical profession. It is the oldest, strongest, and best medicine for coughs and colds you can possibly buy.

Accept no cheap and worthless substitute. Be sure you get Ayer's Cherry Pectoral. It contains no narcotic or poison of any kind.

Prepared by Dr. J. C. Ayer & Co., Lowell, Mass., U. S. A.

# KODAK FILMS

Coast prices on all films. Kodak supplies, chemicals and sundries of all kinds. Post cards and views.

**HONOLULU PHOTO SUPPLY CO.**  
Port below Hotel St.

## Empire Chop House

(Lately Palace Grill.)  
Bethel St. Opp. Empire Theatre.  
Open Day and Night. Cuisine Unsurpassed.  
BEST MEALS AT ALL PRICES!

## Catton, Neill & Co. LIMITED

Engineers, Machinists, Blacksmiths and Boiler-makers.  
First class work at reasonable rates.

## Y. Yoshikawa

163 King Street, opp. Young Building  
Good, new bicycle, \$75; second hand, any kind, cheap. Tricycles for sale. Motorcycles repaired and re-tired.

## Honolulu Iron Works

STEAM ENGINES, SUGAR MILLS, BOILERS, COOLERS, IRON, BRASS AND LEAD CASTINGS.  
Machinery of Every Description Made to Order. Particular Attention Paid to Ship's Blacksmithing. Job Work Executed on Short Notice.

## High-Class

MUNICIPAL IRRIGATION.  
And  
PUBLIC UTILITY BONDS  
Real Estate Investments and Loans.

## CHAS. A. STANTON

Room 33 Alexander Young Building  
Honolulu, T. H.

1910 DIARIES  
All Kinds, All Sizes, All Prices.  
**CAT & MOSSMAN**  
Merchant St. near Postoffice.

## PARAGON PAINT AND ROOFING CO

PETER HIGGINS, Manager.  
Estimates Free of Charge.  
PHONE 60.  
Office No. 939 Bethel St. near Hotel.

## USE Sweet Violet BUTTER

C. Q. YEE HOP TEL. 251

BUY  
**REGAL SHOES**

# MERCHANTS SHOW STRONG FEELING AGAINST LIQUOR

(Continued from Page One.)

deprive the Territory of Hawaii of powers and rights granted to it, by the Congress, under the Organic Act creating the Territory of Hawaii; and, "Whereas, The enactment of legislation of the character of the bill now before the Committee of the Congress will abridge the control of the Territory over internal and local condition of all the residents of the Territory; therefore,

"Be It Resolved, By the Merchants' Association of Honolulu, that this Association express its confidence in the integrity, ability and desire of the Executive and Legislative authorities of the Territory of Hawaii, to enforce and enact such laws as are, and may be, beneficial to and for, the protection of Hawaii:

"Resolved, That the Merchants' Association of Honolulu respectfully protest to the Congress of the United States, against any legislation divesting the Territory of Hawaii of powers granted to it under the Organic Act creating the Territory of Hawaii:

"Resolved, That copies of these preambles and resolutions be sent to the President of the Senate and the Speaker of the House of Representatives, through the Territorial Delegate to Congress."

So read the resolutions which the Merchants' Association adopted by a viva voce vote yesterday afternoon, after the following clearcut statement in favor of the Prohibition bill now pending in Congress had been defeated by a vote of thirty-seven yeas to fourteen nays on the roll call, the voting being by firms consisting of the membership. There are several firms not represented and at least one having a representative present was inadvertently overlooked. This is the resolution that failed:

Moved by R. H. Trent, seconded by L. A. Thurston:

Resolved, That we favor the general principal of governmental home rule for Territory of Hawaii, but ...

Resolved, further, That we specifically favor the application to this Territory of the principles of the Curtis bill now in committee of the senate of the United States, and favor the passage and enforcement of such a bill by the United States authorities."

One of the ablest debates heard in Honolulu for some time preceded the decision. It was also one of the largest meetings the Association ever held, the hall in the McCandless building being filled to overflowing. President Fred. L. Waldron was in the chair, others present being Secretary E. A. Berndt, G. W. Smith, James Wakefield, W. A. Bowen, G. P. Castle, E. M. Cheatham, C. H. H. Ferris, C. N. Marquez, T. F. Lansing, E. W. Jordan, W. H. McInerney, A. Gartley, A. F. Wall, R. F. Lange, W. Lanz, G. F. Bush, J. H. Hertsche, J. M. Riggs, C. von Hamm, W. H. Smith, George Rodiek, G. G. Guild, F. W. Macfarlane, C. M. V. Forster, Chas. Bellina, L. A. Thurston, A. Gartley, A. W. Garter, M. Phillips, J. L. McLean, Norman Watkins, E. I. Spalding, C. G. Bartlett, J. Steiner, W. Lishman, R. J. Buchly, Evans, J. H. Soper, W. M. Bray, H. C. Eakin, J. M. Levy, M.

bransch, J. E. Silva, D. T. Lewis, W. Walters, W. W. Hall, G. F. Henshall, R. H. Trent, M. A. Gonsalves, O. C. Swain, R. O. Matheson, W. W. Browster, Gilbert J. Waller, E. Childs, Harry Lewis, C. S. Crane, E. Towse, H. H. Williams, J. L. Cockburn, E. A. Douthitt, E. W. Quinn

President Waldron calling the meeting to order read the call issued at the request of several members.

Mr. Trent asked what legislation affecting government in Hawaii was meant, a question to which the chair was not prepared to reply.

George W. Smith answered the query by reading the resolutions as already stated and, after they were seconded, making remarks in support of the principle of non-interference by the Federal Government in Hawaiian local affairs. He referred to the long period in which the islands were satisfactorily governed under the monarchy; until a time came when that government went wrong and was set aside by residents some of whom were now present. Then after a further period of satisfactory government the country was annexed to the United States, followed shortly by the creation of the Territory of Hawaii, under which both the legislature and the county governments had been proving the capacity of the people for self-government.

Mr. Wakefield offered a substitute resolution, the purport of which was that action at the present was inopportune. This was seconded by Mr. Bowen.

Mr. McInerney endorsed the resolutions presented by Mr. Smith. Hawaii was handling its local affairs as well as those of any community in the world were handled. If prohibition was desired the proper way was to submit an amendment to the Organic Act to the people.

Mr. Trent quoted from the report of the Chief Justice to show that drink was the cause of most of the crime. He then presented his substitute resolution as above. After Mr. Bowen and others had spoken Mr. Trent read a prepared speech, largely dealing with the evils of drink.

George W. Smith declared he was THOROUGHLY OPPOSED TO THE LARGE NUMBER OF SALOONS IN TOWN AND to the increase of the traffic in the islands, yet he did not believe that prohibition could be enforced. He agreed with Mr. Lansing's views. He would favor having the Association go into the next election with a proposal to eliminate a large proportion of the saloons.

"And the trade will go to San Francisco merchants," Mr. Walters added.

Mr. Macfarlane quoted figures from the police records showing that arrests for drunkenness were about 1100 in 1902 and only about 600 in 1909. In 1902 there were 549 natives arrested for drunkenness and but 236 in 1909. These figures went to show that there was a great improvement in conditions under the local laws. Mr. Trent's resolution was inconsistent. It pronounced for home rule and then asked for something that was not home rule. He had never been in favor of liquor, having been fully aware of its effects upon the Hawaiians, but the question was how they were going to handle it. If they sent these figures to Washington or even to Mr. Woolley, they would say, "Of course your law is working well."

Mr. Thurston interrupted the last speaker with a remark that the figures might only show that the police did their duty better in 1902 than in 1909.

Mr. Macfarlane retorted warmly to what he regarded as an unfair mode of meeting facts and figures, and as the conversation grew warm Mr. Walters called on Mr. Thurston to sit down.

"If you think your howling will make me sit down, I can tell you it will not until the sun goes down."

Geo. W. Smith called for order. He also resented Mr. Trent's remark that a vote for his resolution was a vote for whisky, as being entirely uncalled for. "I can assure you, gentlemen, it is not so," he concluded and then suggested that the vote be taken, which was done with the result above stated.

Mr. Rodiek said he understood that liquor could still be privately imported. The government would lose the revenue, and Honolulu business would go to California.

Addresses were made by L. A. Thurston, G. P. Castle, O. C. Swain, T. F. Lansing and R. H. Trent. Lansing is a director of W. C. Peacock & Company, but in the course of his remarks declared that he would support a local Prohibition law.

# SPORTS

## BARRY DOES NOT BLAME TOWNSEND

While admitting that the fumble offelder Townsend cost the National Guard the baseball game with the Pacific fleet's picked nine Sunday afternoon, Sergeant Barry does not criticize the player and requests that no one else do so. Townsend, he declares, played the game with all his might and the fumble at the close was one of those unfortunate things that may happen to anyone. Had it occurred at any other stage of the game, it would hardly have been noticed, but coming when it did, it meant everything and stood out as big as a whole inning.

"It was Townsend's playing that saved the game for us on Saturday," says Barry, "and he played a beautiful game on Sunday. Nobody has a right to feel sore on account of the failure to hold the ball at the end of the game, for it was a pure accident."

"The National Guard baseball team is the squarest bunch of players ever gotten together anywhere. Every man plays the game to the limit, and if errors occur they are genuine errors and no mistake."

Though defeated by the picked nine of the Pacific fleet, the National Guard team still has a big chip on its shoulder and is waiting to hear a noise like business from out Lelehua way.

## A NEW HANDBALL SERIES COMING

The drawings for the second round of handball contests between students and seniors of the Y. M. C. A. took place yesterday afternoon and resulted as follows:

- W. Barnhardt vs. Tom McGuire, this evening at 7:30.
- N. Blatt vs. C. Lewis, February 9 at 4 p. m.
- V. Marcellino vs. M. G. Johnstone, February 9 at 4:30 p. m.
- Fook On vs. James Nott, February 9 at 5 p. m.
- W. Rice vs. T. H. St. John, February 10 at 5 p. m.
- Sing Hung vs. W. Gertz, February 11 at 5 p. m.

The dates of the following matches not set:

- Ah Pau Low vs. E. B. Blanchard.
- O. G. Ingalls vs. Lau Long.
- McB. Purvis vs. George Ewaliko.
- E. Cushingam vs. E. Evans.
- G. Pang vs. S. Bunn.

In this series there will be the same number of points as in the first series and the same conditions will govern.

# Princess SKATING RINK

## Opens Thursday EVENING

New Seamless Floor Smooth as Glass

Good Music  
FANCY SKATING BY MISS WEINER

ADMISSION .....15c  
SKATES .....15c Extra

## Son J Recital

Hugo Herzer  
PRESENTS  
Mrs. Hugo Herzer,  
Miss Irmgard Schaefer,  
Mr. Christian Jenkins,  
Mr. Henry Clark

Ball Room  
Alexander Young Hotel  
Tuesday Evening Feb. 8, '10

Admission, \$1.00. Tickets on Sale: Bergstrom Music Co.; Wall Nichols Co.; Young Hotel Office.

## Empire Theater

HOTEL STREET  
VAUDEVILLE  
MISS EVA ALVA SONG  
And ACROBATIC DANCE  
ARTIST HARRY WEIL  
Returning from a two years' engagement in China and Russia.  
Premier pianists of the Far East.  
MOTION PICTURES

## Park Theater

Fort St. opp. Convert.  
MAY WALLACE and BOBBIS WAY.  
Melnotte Sisters Vienna's Orchestra.  
MOTION PICTURES.  
Admission.....5c, 10c 15c

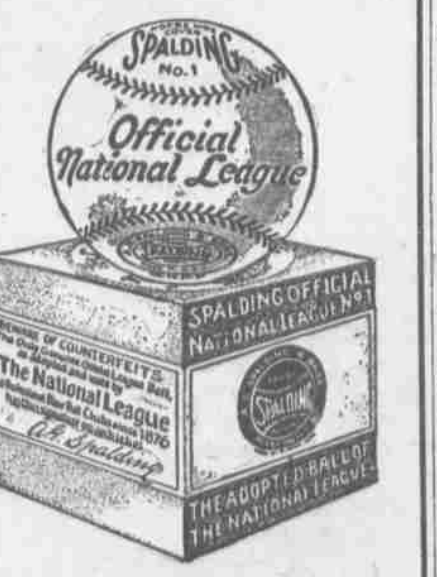
DR. F. SCHURMANN  
OSTEOPATHIC PHYSICIAN, OSTEO-PATHIC OCUList  
Hours:—Consulting, 2—3 p. m. Saturdays Excepted. Operating, 8—11 a. m., 3—6 p. m.  
Telephone 33. Office, corner Beretania and Union streets.  
HONOLULU, T. H.

## Play Ball

and be sure you are playing with a SPALDING ball.

Top notchers in the game demand Spalding Base ball goods because they know that they are the best and as the game is their living they take no chances with the "just as good as Spaldings" kind.

We are Spaldings distributors for these islands and carry a big stock of their goods. Come in and get your equipment, go to it, and may the best team win.



E. O. HALL & SON, LTD.

**Fraternal Meetings**  
**HONOLULU LODGE No. 615, B. P. O. ELKS.**  
Meets in their hall on King Street, near Fort, every Friday evening. Visiting Brothers are cordially invited to attend.  
E. A. DOUTHITT, E. R. H. C. EASTON, Secretary.

**HARMONY LODGE, No. 3, I. O. O. F.**  
Meets every Monday evening at 7:30 in Odd Fellows' Hall, Fort street. Visiting brothers cordially invited to attend.  
H. E. McCOY, N. G. E. R. HENDRY, Sec.

**DIVISION No. 1, A. O. H.**  
Meets every first and third Wednesday, at 8 p. m., in C. E. U. Hall, Fort Street. Visiting brothers are cordially invited to attend.  
FRANK C. CREEDON, Pres. JAMES T. CAREY, Sec.

**J. W. KERSHNER AUTO TIRE REPAIRING**  
1177 Alakea St. Phone 454.

**BEAUTIFUL ROCKERS**  
Chairs, Bureaus and Furniture of all kinds made from select Koa.  
**Wing Chong Co.,**  
Corner King and Bethel.

**PAPER**  
All kinds WRAPPING PAPERS and TWINES, PRINTING and WRITING PAPERS.  
**AMERICAN-HAWAIIAN PAPER & SUPPLY CO., LTD.**  
GEO. G. GUILD, General Manager.  
Fort and Queen Streets.  
Honolulu. PHONE 416

Use CARNATION MILK instead of fresh milk.  
**HENRY MAY & CO., LTD**  
Agents.

**Territorial Board of Immigration**  
OFFICE: 405 Stangenwald Bldg. HONOLULU.

**CONSOLIDATED SODA WATER**  
IS ABSOLUTELY PURE.  
PHONE 71.

**SUN CHUNG KWOCK BO LTD**  
CHINESE NEWSPAPER PUBLISHING AND JOB PRINTING.  
No. 49 Cor. of Smith and Hotel Sts.

**WE INVITE INSPECTION OF OUR GOODS**  
K. FUKURODA  
Hotel near Nuuanu. Honolulu

**EUREKA PERFECTION ROOF PAINT**  
The Best Roof Paint for use in Hawaii. Postal to P. O. Box 95 brings booklet.  
THEO. H. DAVIES & CO. Agts.

**S. E. LUCAS**  
PARISIAN OPTICIAN.  
Marine Bldg. cor. Hotel and Alakea.

**Y. WO SING CO.**  
GROCERIES, FRUITS, VEGETABLES, ETC.  
California Butter, 40c lb.; Cooking Butter, 35c lb.; Fresh Dried Fruits, 1186-1188 Nuuanu Street.  
Telephone Main 235. Box 563

**FURNITURE**  
Your Credit Is Good  
J. HOPP & CO. - King St

**IN ORDER THAT YOU** may get the greatest possible good from publicity, your printing must be attractive and well composed, and above all the work must be convincing to the prospective customer you're soliciting.

If you have any doubt regarding the quality of your printing, call or write to us at once. We can help you.

**HAWAIIAN STAR**  
NEWSPAPER ASS'N, LTD.

The Successful Man of Tomorrow will be the Man who Saves Today

And the best way to save is to open a Savings Account depositing each week or month all the money not actually needed for your living. It will not take long for a comfortable sum to accumulate.

BANK OF HAWAII, LTD.

Judd Building, Fort and Merchant Sts. Capital and surplus \$1,000,000

CLAUS SPRECKELS & CO. BANKERS

HONOLULU: T. H. San Francisco Agents—The Nevada National Bank of San Francisco. DRAW EXCHANGE ON SAN FRANCISCO—The Nevada National Bank of San Francisco. LONDON—Union of London & Smith's Bank, Ltd.

COLLECTING PROMPTLY ACCOUNTED FOR.

BISHOP & CO. BANKERS

Commercial and Travellers' Letters of Credit issued on the Bank of California and The London Joint Stock Bank Limited, London.

The Yokohama Specie Bank Ltd.

Capital (Paid Up).....Yen 24,000,000 Reserve fund.....Yen 15,940,000

HEAD OFFICE, YOKOHAMA. The bank buys and receives for collection bills of exchange, issues Drafts and Letters of Credit, and transacts a general banking business.

Local Deposits \$25 and upwards for one year at rate of 4% per annum. Head Office Deposits Yen 25 and upwards for one-half year, one year, two years or three years at rate of 4 1/2% per annum.

Particulars to be obtained on application. Honolulu Office—67 S. King Street. P. O. Box 168.

M. TOKIEDA, Manager.

C. BREWER & CO. LIMITED.

QUEEN STREET Honolulu, T. H. AGENTS FOR Hawaiian Agricultural Company, Onomea Sugar Company, Honoumuli Sugar Company, Walluku Sugar Company, Pepeekeo Sugar Co., Kapapala Ranch, Thomas Pineapple Co.

PROHIBITION BILL IN HOUSE

Introduced by Scott of Kansas and Makes Even Gift of Liquor Tabu in Hawaii.

SENATOR REYBURN IS REBUKED.

Measles in California—King of Sweden III—Bruiser Sullivan Remarries.

(Associated Press Morning Service.)

WASHINGTON, February 8.—Representative Scott of Kansas yesterday introduced a drastic bill for the prohibition of liquor in the Hawaiian Islands. His bill, which parallels the Curtis bill now under discussion in the senate, was introduced in the house so that discussion could be carried along simultaneously with that in the senate.

Representative Scott was a member of the congressional party which visited Hawaii last fall. He made a close study of conditions in every island he visited. He accompanied the members on their visits to plantations, government stations, schools and government places of business, and also made many individual investigations.

SECTIONALISM PLAYED OUT.

WASHINGTON, February 8.—Senator Weldon B. Heyburn of Idaho re-awakened echoes of the Civil War in a bitter speech made in the senate yesterday in opposing the loaning by the government of tents for the big confederate encampment about to be held. His attitude was severely rebuked when the roll was taken for every senator except himself voted in favor of loaning the tents.

Senator Heyburn was born in Delaware county, Pennsylvania in 1852, his parents being Quakers, of English descent. He was therefore not old enough to take any part in the Civil War. He was admitted to the bar in 1876 and has been a resident of Idaho since 1883.

KING GUSTAV ILL.

STOCKHOLM, February 8.—King Gustaf V, of Sweden was suddenly seized with an attack of appendicitis yesterday and was operated on immediately. No further particulars have been issued from the palace concerning his condition, but in the absence of any news, it is believed the king is rallying from the effects of the operation.

Gustaf succeeded to the throne in 1907 upon the death of his father, King Oscar. The present ruler is almost fifty years of age.

THE CRETAN PROBLEM.

CONSTANTINOPLE, February 8.—It is reported here that the Powers will propose that Turkey sell the island of Crete to Greece as the best solution of the Cretan difficulty. This proposition is believed to be for the best interest of all nations, as the Cretans declare that if they continue under Turkish rule they will fight for their freedom.

EX-CHAMPION MARRIED.

BOSTON, February 8.—John L. Sullivan, ex-champion heavyweight prize-fighter of the world, was married yesterday to Katherine Barnett a wealthy woman, who was a schoolmate of John L. The former champion lost about all the money he made in prizefighting and in recent years he has had a hard struggle to keep in funds.

EPIDEMIC OF MEASLES.

LOS ANGELES, February 8.—Two thousand cases of measles are reported from the schools of this city. The outbreak may cause all the schools to be closed.

STANFORD UNIVERSITY, February 8.—Many cases of measles are reported among the students.

PAPER MAKERS CONFESS.

NEW YORK, February 8.—Twenty-six paper manufacturers have pleaded guilty to having violated the federal law against the formation of trusts.

Fine Job Printing, Star Office.

EMMA SQUARE FOR THE LIBRARY

Superintendent Alexander S. Young of Kapiolani Park, who not only keeps the park named in as fine a state as is possible with the limited resources allowed, but studies Honolulu's open spaces generally, in an unofficial interview suggests that Emma square is the place for the erection of Honolulu's new public library, providing, of course that Emma square is large enough.

The first of his arguments is that Emma square is centrally located. Next, there is nothing else for which Emma square is so suited and, as far as accommodations for band concerts are concerned the bandstand could be placed across the street in the grounds of the old high school and the wall surrounding those grounds torn down.

CENSUS LESSON

Dr. Victor S. Clark, Commissioner of Census, has solicited the cooperation of Willis T. Pope, Superintendent of Public Instruction, in the campaign of education on the mode of taking the census. A circular of instructions will be furnished for teachers, which they will be asked to use as a lesson paper in the schools. Mr. Pope has assented to the proposal.

AVOIDED.

Diphtheria is usually contracted when the child has a cold. The cold prepares the child's system for the reception and development of the diphtheria germs. When there are cases of diphtheria in the neighborhood children that have colds should be kept at home and off the street until recovered. Give them Chamberlain's Cough Remedy and they will not have to remain at home long. It also cleans out the culture beds, which form in a child's throat when it has a cold, and minimizes the risk of contracting infectious diseases. For sale by all dealers. Benson, Smith & Co., Agents for Hawaii.

DE SEXTON NEEDS A BUILDING

"With the mosquito and tuberculosis campaign in hand, the Board of Health will be up against it for office room," said President Mott-Smith yesterday. "Dr. Sexton will act as bacteriologist, have charge of the vaccination of school children and conduct post mortems in cases arising from contagious and infectious diseases. He will be practical director of all the medical part of the Board of health work, excepting the care and treatment of the indigent sick in the district of Honolulu, which has been taken over by Dr. Mackall, the City and County physician.

"As all of our office quarters is occupied now, it seems necessary to give up some of the dispensary building for Dr. Sexton's accommodation. I propose to ask the Board of Supervisors to erect a little shack adjacent to the dispensary as a temporary means of meeting the difficulty. Perhaps one of the election booths might be procured for dispensary purposes, in which case the Board of Supervisors would only have to pay for removing and setting it up."

ACCOUNTS DISPUTED.

Final accounts of P. E. R. Strauch, administrator of the estate of Akiona, sometimes known as Achiona came up for approval before Judge Robinson yesterday but the matter was continued until February 4 owing to objections on behalf of the widow of deceased. J. Lightfoot appeared for the administrator and A. A. Wilder for the widow.

CAMPTON'S ESTATE.

In the matter of the estate of George Campton, deceased, A. A. Durant, a creditor, was discharged as temporary administrator, and George Campton, Jr., son of deceased, appointed as administrator under \$100 bond.

CONTESTED DIVORCE.

Josephine J. Perry's divorce suit against F. J. Perry, which is contested, was continued by Judge Robinson yesterday morning until Thursday.

Fine Job Printing, Star Office.

AUTOS FOR THE FIRE BRIGADE

While the Board of Supervisors is still in doubt as to whether or not extra appropriation will be allowed the Honolulu Fire Department for needed improvements, Fire Chief C. H. Thurston declares that, if the City sees its way clear to add to the outfit it might just as well secure auto appliances, instead of horse machines, and be up-to-date.

A California expert in fire matters says in this regard: "Our old, faithful friend, the horse who has served us for so many years is doomed and his days are numbered as a part of the necessary equipment of an up-to-date department and the auto-propelled apparatus has passed completely through the experimental stage and has demonstrated beyond the question of a doubt that it is thoroughly reliable under any and all conditions."

Fine Job Printing, Star Office.

Saturday, Feb. 12

THE HUI PAUHI OF Oahu College

Presents Mrs. Thos. C. Trueblood, A.M. in her Dramatization of "Silas Marner"—By George Elliot

CHAS. R. BISHOP HALL. At 2:15 P. M. ADMISSION 25c and 15c.

Also Thos. C. Trueblood, A.M., (Professor of Elocution and Oratory, University of Michigan) in The Beautiful Drama of "Ingomar"

CHAS. R. BISHOP HALL. At 8:30 P. M. ADMISSION, 75c and 50c

Tickets for Sale by all Punahou students and at Wall, Nichols Co., King St., on and after Feb. 7, 9 a. m.

REBUILT REMINGTON \$65.00. A. B. ARLEIGH & CO., LTD. Hotel St., opp. Union.

PACHECO'S DANDRUFF KILLER. Soft, Silky Hair. Pacheco's Dandruff Killer will keep the scalp free from dandruff and promote a luxuriant growth of hair.

Auto Fenders, \$2.50 up. Will Examine Gutters free of charge also do Plumbing Work. Lowest Prices. Work Guaranteed. JOHN MATTOS. Telephone 657. 1175 Alakea St.

Manila Cigars. Finest Quality and Every Variety. Large Stock Now on Hand. LEE TOMA. 83 N. King St. Phone 640.

New Styles in HART SCHAFFNER & MARX CLOTHING. SILVA'S TOGGERY.

Forcegrowth WILL DO IT. REAL ESTATE FOR SALE. IMPROVED. Wilder & Alexander St., 6 rooms.....\$3,500.

COMMUNITY SILVER. GOOD TASTE AND JUDGMENT are more essential to having a beautifully appointed table, than large expenditure. Let us show you unusual patterns in Community Silver. It has a distinct richness of appearance and charm of design which rival sterling. It's more than triple plate—it costs but a trifle more than ordinary plated ware—it lasts a life time. W. W. Dimond & Co., Ltd. 53-57 King Street.

Forcegrowth WILL DO IT.

REAL ESTATE FOR SALE. IMPROVED. Wilder & Alexander St., 6 rooms.....\$3,500. Lanahuli Drive Manoa Valley 6 rooms.....\$4,500. College St., trim house with cottage in rear.....\$5,300. Artesian St., nice lot and small cottage.....\$1,000. Pensacola & Wilder Ave., 6 rooms.....\$3,500. UNIMPROVED. 4 lots in Block No. 42, Kaimuki.....\$1,400. 2 lots in Block No. 28, Kaimuki.....\$ 800. 2 lots in Block No. 30, Kaimuki at your own figure. Beautiful lot in Manoa Valley.....\$ 900. SEE US FOR THESE AND OTHER BARGAINS. Bishop Trust Co., LIMITED Bethel Street.

Oahu Railway TIME TABLE. OUTWARD. For Waianae, Waipua, Kahuku and Way Stations—9:15 a. m., 9:20 p. m. For Pearl City, Ewa Mill and Way Stations—7:30 a. m., 9:15 a. m., 11:15 a. m., 12:15 p. m., 5:15 p. m., 7:30 p. m., 11 p. m. For Wahiawa—9:15 a. m. and 9:18 p. m. INWARD. Arrive Honolulu from Kahuku, Waianae and Waianae—8:36 a. m., 6:31 p. m. Arrive Honolulu from Ewa Mill and Pearl City—7:46 a. m., 8:36 a. m., 10:38 a. m., 1:40 p. m., 4:31 p. m., 6:31 p. m., 7:30 p. m. Arrive Honolulu from Wahiawa—8:36 a. m., and 6:31 p. m. The Haleiwa Limited, a two-hour train (only first-class tickets honored), leaves Honolulu every Sunday at 8:22 a. m.; returning, arrives in Honolulu at 10:10 p. m. The Limited stops only at Pearl City and Waianae. \*Daily. †Ex. Sunday. ‡Sunday Only. G. P. DENISON. F. C. SMITH, Superintendent. G. P. & T. A. Fine Job Printing, Star Office.

