

If you want to-day's News, to-day you can find it in THE STAR

THE HAWAIIAN STAR.

The Hawaiian Star is the paper that goes into the best home of Honolulu

Classified Ads, Three Times, 25 Cents

VOLUME XIII.

HONOLULU, HAWAII. SATURDAY, MAY 27, 1935.

No. 4113

COUNTY ACT "BUTTERS-IN"

JUDGE GEAR AND A. G. M. ROBERTSON APPEAR FOR INTERESTED PARTIES IN THE COUNTY ACT LITIGATION AND MORE ATTORNEYS MAY BE HEARD FROM—COURT REFUSES CONTINUANCE UNTIL NEXT MONDAY.

The County Act case is not to have smooth sailing in the Supreme Court with only the Attorney General's department and Cooper opposed to Highton and Calhoun contesting the direction of its progress. There will be a lot of "buttering in" A. G. M. Robertson chairman of the Republican Territorial committee, will appear as counsel for J. C. Quinn, who has something to say both in the capacity of a taxpayer and a candidate for a county office. In the latter capacity he is a new element in the case. His nomination papers were filed this morning so that he is qualified to appear as one having special interests involved.

Attorney C. W. Ashford, it is stated will also "butt in." He may appear for the Home Rule party, or merely as a taxpayer who wants to be heard. The Home Rulers are considering taking steps to come to the defense of the act, and will probably retain Ashford if they decide to butt in.

The contest is a peculiar one in that any taxpayer in the islands has a right to force himself into the case. It is a matter concerning all taxpayers and all have a right to be heard, hence there may be many attorneys by the time the hearing begins.

There is a lot of politics in the arrangements for the line-up. If the act is knocked out, Home Rulers claim that they will win a sweeping victory on the county act issue in the next Territorial campaign and the danger of such a victory occurring is generally conceded. For this reason all the parties are anxious to be represented in the defense of the act. The Republicans will be able to say at least that they tried to defend the act they passed and if it stands they will be in a fine position, while Home Rulers and Democrats both want to claim a hand in the work.

Judge George D. Gear is another "butter in" appearing as amicus curiae, for various parties interested in the case. When the matter was called in the Supreme Court this morning all the attorneys mentioned were present and United States Judge Dole was an interested listener to the proceedings. D. L. Withington, of Castle & Withington, was associated with Highton.

Naval Fight Seems Likely At Any Moment

(Associated Press Cable to The Star).

TOKIO, May 27.—Admiral Rojestvensky's fleet has been sighted in the Korean Straits steaming in double columns with the battleships starboard. Togo is not to be located. There is strict censorship on all news regarding his movements. There is great public elation in anticipation of the coming naval battle and the utmost confidence is felt in Togo.

STRIKERS LOSE SUPPORT

CHICAGO, May 27.—The building trades organizations have withdrawn support from the striking teamsters.

WIRELESS ACHIEVEMENT

NEW YORK, May 27.—The steamship Campana, in mid-ocean between here and Liverpool was today in wireless communication with both America and Europe at the same time. This is an unprecedented achievement in wireless telegraphy.

Admiral Is Not Sick

ST. PETERSBURG, May 27.—Admiral Rojestvensky is reported to be in good health, notwithstanding reports of his serious illness. No confirmation has been received here of the report that a naval engagement took place in Korea straits.

CRUISER FOUNDERS

SANTIAGO, Chile, May 27.—The Chilean cruiser Presidente has foundered in the Gulf of Ancud.

A LIGHT DAY IN THE HOUSE

MEMBERS GATHER LATE AND SEPARATE EARLY DOING VERY LITTLE BUSINESS.

The House of Representatives was in no particular hurry to go to work this morning and it was minutes after 10 o'clock when Speaker Knudsen rapped his gavel.

A message from the Governor notified the House that he had signed the departmental appropriation bill (Senate Bill 8).

The House concurred in the minor amendment made by the Senate to House Concurrent Resolution No. 2. The third reading of House Bill No. 3 (Harris) to appropriate \$2000 for the expenses incurred by the Police Department at the Lahaina riot was the only item on the orders of the day, it having been deferred from yesterday.

Mahelona moved the third reading, but this was interrupted by the arrival of the Governor's message vetoing certain items in the bill for special appropriations for unpaid bills. (Senate Bill 6). The message, which was identical with that received by the Senate, was read through by Clerk Kalaoukua in English.

Action on the message was deferred until the House could be informed of what course the Senate had taken with the message.

Returning to the consideration of the bill for \$2,000 for the Lahaina riot, Harris, its father, moved to amend it by striking out the \$2000 for the Police Department and inserting \$500 for the Executive Department to pay for the packing and shipping the arms and accoutrements of the National Guards of Hawaii back to the Federal War Department at Washington.

Harris explained that there were many thousand dollars worth of arms and accoutrements, the property of the Federal Government, here in Honolulu for which the Executive had made no provision for the Militia the Executive did not retaining the responsibility.

Coptho suggested that the United States had paid for sending the property here and should pay for taking it back. He suggested that it might be turned over to the U. S. Quartermaster here.

A motion to indefinitely postpone the original bill carried by 15 to 5, thus knocking out both the \$2000 for the police expenses and the \$500 suggested by Harris to pay for shipping the guard's arms to the War Department. The House having learned that the

HARTWELL ASKS SOME QUESTIONS

HIGHTON ARGUING AGAINST THE COUNTY ACT IN THE SUPREME COURT.

Judge Highton proceeded in the Supreme Court this morning with the general issues raised by the agreed submission in the County Act case. During the argument of the proposition that the Territory's liabilities under its bonds is affected by the act, Justice Hartwell interposed several questions. Highton claimed that the turning over of fifty per cent of the Territorial funds to the counties was a violation of the obligation undertaken by the Territory when it pledged its income as security for bonds, and Hartwell's question suggested that the bondholders would have a right to follow after the funds if they went to the counties. Highton insisted that the transferring of the funds so that they were no longer Territorial funds was a violation of the pledge in the bonds.

Among the interested listeners to the argument were Senator Dickey, Senator Palmer Woods—the "Lone Democrat of the Senate,"—and Representatives Andrade, Smith of Hilo and Sheldon.

HENRY KAPEA EXPECTED SOON.

The S. S. Siberia sailed this afternoon from San Francisco for Honolulu. Deputy Sheriff Vida is probably aboard with Henry Kapea who was extradited from England recently to answer to a charge of embezzling funds from the Hawaiian Trust Company.

PRICE OF SUGAR.

James E. Morgan today received a cable message stating that the price of sugar is 4 13-32.

STRATEMEYER PROPERTY SOLD.

A. W. Young bought the Stratemeyer property at Fisher, Ables & Co's auction this morning for \$2,800.

At U's Christian church tomorrow at 10:30 o'clock the communion will be observed and at 11 o'clock the congregation will join in the Union mass meeting at the Central Union Church, and also in the evening at 7:30 o'clock. All are invited to these services.

Senate had sustained the Governor's veto of certain items in the bill for Special Appropriations for Unpaid Bills, Cox moved to sustain the veto. The motion carried by 17 to 7. The House adjourned at 10:45 until 2 p. m. Monday.

GRAFTERS JAILED

THE HON. JONAH KUMALAE AND ENOCH JOHNSON FINALLY COMMITTED TO OAHU JAIL TO SERVE A YEAR AT HARD LABOR FOR CONCOCTING A FAKE VOUCHER IN THE LAST HOUSE OF REPRESENTATIVES.

Jonah Kumalae, former representative and Attorney Enoch Johnson, grafters of the last legislature, will have to serve the one year at hard labor to which they were sentenced by Judge De Bolt after a jury had found them guilty of conspiracy to defraud the Territory. The Supreme Court this morning handed down a unanimous decision overruling the exceptions in their cases and leaving them no alternative but to serve their terms in Oahu prison. Kumalae was a member of the first two Territorial legislatures and was something of a leader, being a candidate for speaker in the first session.

He is an eloquent orator in Hawaiian and after the exposure of his graft, first made public in The Star, he went over to the Home Rule party, in which he is now a leader. The piece of grafting for which he was convicted was securing the approval and cashing of a fake voucher for \$12,500, with the assistance of Enoch Johnson. The voucher purported to be for special services and a legal opinion given by Johnson to the special committee on the "Chin-nese fund." It was approved by Kumalae as chairman of the committee and was duly paid. The testimony of

(Continued to Page 5.)

SOME POLICE LEFT AT LAHAINA

HIGH SHERIFF CONSIDERED IT A MATTER OF PRUDENCE OVER SUNDAY—EVERYTHING QUIET.

Twenty one police under command of Captain Kanoe remained at Lahaina. High Sheriff Hury said today that conditions were perfectly quiet at Pioneer and the men had returned to work.

"The strikers," said the High Sheriff, "seemed perfectly satisfied and everything was moving smoothly when we left. I thought it would be wiser to leave a detachment of the police on duty until Monday as the Japanese are going on Sunday to the grave of the man who was shot Saturday night during a riot at the house of a Japanese contractor. I thought that possibly some of the Japanese might get some sake and the thought of old scores return and violence might follow. The Japanese are to hold some sort of service at the grave.

The coroner's inquest to determine the cause of the death of that man has not been concluded. Considerable testimony has been taken however. The evidence goes to show that the Japanese had assembled unlawfully and were rioting about a house of one of their number against whom they had some resentment. They were ordered by the police to disperse but fired at the police and then the police repelled killing one man.

The police and militia worked well together during this expedition and all responded without a murmur whenever they were called upon to act. I think the strike is settled now there will be no further trouble.

The strike started because of a whipping that George Cockett one of the lunas is said to have given to a Japanese. Cockett was fined \$100 and has left the employ of the plantation. The Japanese were incensed against a native who was accused of forcing them by means of his position as a watchman at the plantation, to invest in a lottery for a horse. He was fined \$50 for conducting a lottery but was not discharged from the employ of the plantation.

Luttet's Hawaiian Pot in Pound Cans for sale by all druggists and grocers.

FOR SALE. Roman candles, rockets, all styles fireworks. New England Bakery.

ATTENTION, GOOD HOUSEWIVES. At last we have received the much-talked-of Asbestos table cloth for your dining table. Arleigh & Co.

TIME TO PAINT. Your house needs painting. Get estimates from Enos Bros., Union street.

A MATTER OF HEALTH

CHAIRMAN WAS PINCHED

KUMALAE, CHAIRMAN OF THE HOME RULE FUSION COMMITTEE WAS UNABLE TO REPORT.

It certainly would seem to be a pretty rough deal when a man reaches the dizzy eminence of the vice-chairmanship of a great political party, is appointed chairman of a special committee to arrange for fusion with another great political party, and is then unable to report owing to being pinched by the police and taken over to the reef to serve a year, breaking rock, for conspiracy to defraud the Territory of \$312.50. Yet that is what occurred this morning at the convention of the Home Rule party for Jonah Kumalae, one time member of the legislature, vice-chairman of the Home Rule executive and chairman of the special committee to talk about fusion with the Democrats went away from the convention to confer with the Democrats—and never came back!

Charles Notley, also of the fusion committee, returned to the convention shortly before noon and reported what had occurred to the head and chief of the committee and there was consternation in the ranks.

Notley made a speech, in Hawaiian of course, in which he counseled moderation. He explained that the conviction of Kumalae had been obtained by the use of a grossly partisan jury and advised that a petition for clemency should at once be circulated. Kumalae,

(Continued on page 5.)

NEW ANIMALS. The Kaimuki Zoo has imported new animals per the S. S. Sonoma. Among them are a cage of Squirrels, a pair of Mexican Doves, a pair of Australian Wallabies, and a fine pair of Emu. This hot weather is just the time to take a trip to the Zoo and cool off.

ODDS AND ENDS. Good Typewriter Paper at less than cost. Regular 1.57 and 1.25 values going at 90 cts. box. Call early before its all sold. Wall, Nichols Co.

Here's the Very Latest

Dainty Footwear

Ladies' Kid Bluchette Large Eyelets, Suk Laces, Flexible turn Sole, 1 1/2 inch Cuban Heel, Patent Tip. Newest toe.

Price, \$3.50

We offer in this shoe more value than we have ever been able to offer at the price. It is the very latest in style, will give comfortable and serviceable wear and conforms to the natural lines of the foot. Every size and width in stock.

MANUFACTURERS' SHOE CO., LIMITED.

1051 FORT STREET

WOULD NOT SHAVE RUSSIAN WHISKERS

JAPANESE BARBER AT LAHAINA SHOWED HIS PATRIOTISM BY REFUSING TO SHAVE CAPTAIN JOHNSON—THE KINAU RETURNED THIS MORNING WITH THE POLICE, NATIONAL GUARD AND THE OTHER HEROES FROM THE ANCIENT CAPITAL OF THE GROUP.

Johnny Came Marching Home on the decks of the Kinau this morning but the band was not there to greet him. But a big crowd was. The Wilder what was crowded with a large crowd of people, many of whom were there to greet friends and many to greet the militia and police who were returning by the steamer Kinau from a weeks service in the strike region on Maui.

High Henry, Captain Johnson, Lieut. Dougherty, the militia and part of the police posse returned from a hard trip of it. Not all of the men returned for it was decided wiser to leave a detachment of police at Lahaina on duty, in case of a renewal of the trouble by the Japanese. The representatives of the Japanese consulate also returned. The various demands of the strikers were considered and numerous concessions were made to the Japanese.

(Continued on page eight)

CHAMBERLAIN'S COUGH REMEDY GIVES SATISFACTION EVERYWHERE.

"I have been selling Chamberlain's Cough Remedy in my retail shop of this place for six years," says Adolph Abrahamson of Durbanville, Cape Colony. "I find it to give satisfaction with the people who use it and it is the best seller of any cough remedy I handle." For sale by all dealers, Benson, Smith & Co., agents for Hawaii.

IN THE SWIM. Bathing suits are the feature at Sach's this week, and men, women and children will be catered for. If you would learn how to swim Sach's water wings will teach you quickly.

Automobiles can be hired day or night at Club Stables, Fort Street.

BUY A NEW HEAD. This is impossible, but if you have one that aches it is possible to cure it with Head-Ease powders. They are safe, pleasant, effective. At Hohron's.

Fine Job Printing Star Office.

We Give Sound Advice

on matters pertaining to the settlement of your estate. For instance: You may want to know what it will cost and what form and routine must be adhered to. This information we are pleased to supply on application; also to advise you relative to the formalities of will-making.

HUNTER'S SUPPLIES

SHOTGUNS, RIFLES, REVOLVERS

Ammunitions

A FULL LINE AT

PEARSON & POTTER CO., Limited

451 FORT STREET

Oceanic Steamship Company.

TIME TABLE

The Six Passenger Steamers of this line will arrive at and leave this port as follows:

FROM SAN FRANCISCO	FOR SAN FRANCISCO
*ALAMEDA.....MAY 17	*ALAMEDA.....MAY 17
*SIERRA.....MAY 24	*SONOMA.....MAY 24
*ALAMEDA.....JUNE 7	*ALAMEDA.....JUNE 7
*SONOMA.....JUNE 14	*VENTURA.....JUNE 14
*ALAMEDA.....JUNE 21	*ALAMEDA.....JUNE 21
*VENTURA.....JULY 5	*SIERRA.....JULY 5
*ALAMEDA.....JULY 12	*ALAMEDA.....JULY 12
*SIERRA.....JULY 19	*SONOMA.....JULY 19
*ALAMEDA.....AUGUST 2	*ALAMEDA.....AUGUST 2
*SONOMA.....AUGUST 9	*VENTURA.....AUGUST 9
*ALAMEDA.....AUGUST 16	*ALAMEDA.....AUGUST 16
*VENTURA.....AUGUST 23	*SIERRA.....AUGUST 23
*ALAMEDA.....SEPTEMBER 6	*ALAMEDA.....SEPTEMBER 6
*SIERRA.....SEPTEMBER 13	*SONOMA.....SEPTEMBER 13
*ALAMEDA.....SEPTEMBER 20	*ALAMEDA.....SEPTEMBER 20
*SIERRA.....SEPTEMBER 27	

* Local Boat

In connection with the sailing of the above steamers, the Agents are prepared to issue to intending passengers through tickets by any railroad from San Francisco to all points in the United States, and from New York by steamship line to all European ports.

W. G. Irwin & Co.

General Agents Oceanic S. S. Company.

Canadian-Australian Royal Mail STEAMSHIP COMPANY

Steamers of the above line, running in connection with the CANADIAN-PACIFIC RAILWAY COMPANY between Vancouver, B. C., and Sydney, N. S. W., and calling at Victoria, B. C., Honolulu and Brisbane, Q.

FOR AUSTRALIA	FOR VANCOUVER
MANUKA.....JUNE 2	AORANGI.....MAY 31
AORANGI.....JULY 1	MOWERA.....JUNE 28
MOWERA.....JULY 29	MOANA.....JULY 26
MOANA.....AUG. 26	AORANGI.....AUG. 23
AORANGI.....SEPT. 23	MOWERA.....SEPT. 20
MOWERA.....OCT. 21	MOANA.....OCT. 18
MOANA.....NOV. 18	MOWERA.....DEC. 15

CALLING AT SUVA, FIJI, ON BOTH UP AND DOWN VOYAGES.

THEO. H. DAVIES & CO., Ltd., Gen'l Agts.

AMERICAN HAWAIIAN STEAMSHIP COMPANY.

DIRECT MONTHLY SERVICE BETWEEN NEW YORK AND HONOLULU, VIA PACIFIC COAST.

FROM NEW YORK TO HONOLULU.	FROM SAN FRANCISCO TO HONOLULU.	FROM HONOLULU TO SAN FRANCISCO.	FROM SEATTLE AND TACOMA TO HONOLULU.
S. S. "ARIZONAN".....MAY 20th	S. S. "HAWAIIAN".....JUNE 5th	S. S. "NEVADAN".....JUNE 1st	S. S. "NEBRASKAN".....MAY 21st
S. S. "NEBRASKAN".....JUNE 11th	S. S. "NEVADAN".....JUNE 22nd	S. S. "NEBRASKAN".....MAY 21st	S. S. "NEVADAN".....JUNE 11th
S. S. "NEBRASKAN".....JUNE 18th	S. S. "NEVADAN".....JULY 7th	S. S. "NEBRASKAN".....JUNE 18th	S. S. "NEVADAN".....JULY 7th

H. Hackfeld & Co. Agents. C. P. MORSE, General Freight Agent.

Pacific Mail Steamship Co. Occidental & Oriental S. S. Co.

Steamers of the above Companies will call at Honolulu and leave this port on or about the dates below mentioned:

FOR CHINA AND JAPAN.	FOR SAN FRANCISCO.
COPTIC.....MAY 19	MONGOLIA.....MAY 19
SIBERIA.....JUNE 3	CHINA.....MAY 26
MONGOLIA.....JUNE 14	DORIC.....JUNE 13
CHINA.....JUNE 24	MANCHURIA.....JUNE 19
DORIC.....JULY 8	KOREA.....JULY 4
MANCHURIA.....JULY 15	COPTIC.....JULY 14
KOREA.....JULY 29	SIBERIA.....JULY 28
COPTIC.....AUG. 9	MONGOLIA.....AUG. 8
SIBERIA.....AUG. 23	CHINA.....AUG. 18
MONGOLIA.....SEPT. 2	DORIC.....SEPT. 1
CHINA.....SEPT. 13	MANCHURIA.....SEPT. 8
DORIC.....OCT. 4	SIBERIA.....SEPT. 22
KOREA.....OCT. 17	COPTIC.....OCT. 3
COPTIC.....OCT. 27	SIBERIA.....OCT. 17
SIBERIA.....NOV. 11	MONGOLIA.....OCT. 27

For general information apply to

H. Hackfeld & Co.

The Balm of Good Coffee

is granted to the users of our OLD KONA COFFEE. It stimulates flagging energy and soothes worried nerves as nothing else can. And then there is the exquisite pleasure to be derived from a cup of rich, clear, delicately flavored coffee.

Price 25 cents per Pound. Henry May & Co., Ltd., Retail Main 22-TELEPHONES-Wholesale Main 92.

SHIPPING INTELLIGENCE

(For additions and later shipping see page 4, 5 or 8.)

THE SUN AND MOON.

East Quarter of the Moon May 25th.	High Tide	Low Tide	High Tide	Low Tide
May 25	6:30	1:15	6:30	1:15
May 26	7:25	2:05	7:25	2:05
May 27	8:15	2:50	8:15	2:50
May 28	9:00	3:30	9:00	3:30
May 29	9:40	4:05	9:40	4:05
May 30	10:15	4:35	10:15	4:35
May 31	10:45	5:00	10:45	5:00

Times of the tide are taken from the U. S. Coast and Geodetic Survey tables. The tides at Kahuai and Hilo occur about one hour earlier than at Honolulu. Hawaiian standard time is 10 hours 30 minutes slower than Greenwich time, being that of the meridian of 157 degrees 30 minutes. The time whistle blows at 1:30 p. m. which is the same as Greenwich, 6 hours, 6 minutes. The Sun and Moon are for local time for the whole group.

U. S. Department of Agriculture. Weather Bureau.

The following data, covering a period of 30 years have been compiled from the Weather Bureau and Metribian records at Honolulu, T. H. They are issued to show the conditions that have prevailed during the month in question, for the above period of years, but must not be construed as a forecast of the weather conditions for the coming month.

Month, May, for 30 years. Temperature. (1899-1904 incl.) Mean or normal temperature, 75 deg. The warmest month was that of 1895, with an average of 78 deg. The coldest month was that of 1902, with an average of 74 deg. The highest temperature was 87 deg. on May 28, 1897. The lowest temperature was 60 deg. on May 5 and 6, 1902.

Precipitation (rain 1877-1894, incl.) Average for month, 2.33 inches. Average number of days with .01 of an inch or more, 12. The greatest monthly precipitation was 11.29 inches in 1885. The least monthly precipitation was 6.23 inches in 1878. The greatest amount of precipitation recorded in any 24 consecutive hours was 5.68 inches on May 10, 1885.

Clouds and Weather (1884-1904, incl.) The prevailing winds have been from the northeast. Station: Honolulu, T. H. Date of issue: April 28, 1905. ALEX. McC. ASHLEY, Section Director, Weather Bureau.

ARRIVING.

Friday, May 26. Stmr. Maui, Bennett, from Hamakua ports and Kahuai at 7:15 a. m. with 12,600 bags sugar 75 head cattle. Stmr. Likiepke, Napala, from Lamai, Maui and Molokai ports at 7 p. m. with 800 bags sugar. Stmr. J. A. Cummins, Searle, from Koolau ports, at 8 p. m. Saturday, May 27. Stmr. Lady, from Koolau ports, at 4 a. m. Stmr. Ka Mo, from Kohala, at 8 a. m. Sunday, May 28. Stmr. Claudine, Parker, from Maui ports, due early in morning. Stmr. W. G. Hall, S. Thompson, from Kahuai ports, due early in morning.

DEPARTING.

Monday, May 29. S. S. China, Friele, from San Francisco, probably sail in afternoon.

PASSENGERS.

Per stmr. Likiepke, May 26, from Molokai ports—Dr. Norgaard, Sister Christina and girl, Father Thomas, Rev. J. Kek'pi. Booked to Depart. Per S. S. China, May 29, for San Francisco—Mr. and Mrs. C. M. Eddy, S. H. Derby, Miss Edythe Crockett, Dr. M. E. Grossman, W. Felmy, Mrs. Felmy, 2 infants and nurse, Miss Helene Robinson, A. H. Jackson, Mrs. C. A. Brown, R. W. Shingle, Mrs. Panny Love, Miss B. Johnson, Mrs. Bing, Mr. and Mrs. George H. McMillan and 2 children, Mrs. W. T. Rawlins, Emil Hossner and wife, N. Nappal, E. Nappal, C. A. Isabella, James H. Love, W. H. Weinberg, Mrs. E. J. Andrew, Miss Hazel Willis, Albert Lyman, Captain Macdon, Dr. W. H. Alex.

TO DREDGE MIDWAY HARBOR. The Bureau of Equipment is preparing plans to send a vessel to Midway to do some dredging work. The appropriation for this work will be available July 1. A search light may be established and maintained until the lighthouse service can install a permanent light.

CIVIC CHAMBERLAIN'S PAIN BALM A TRIAL.

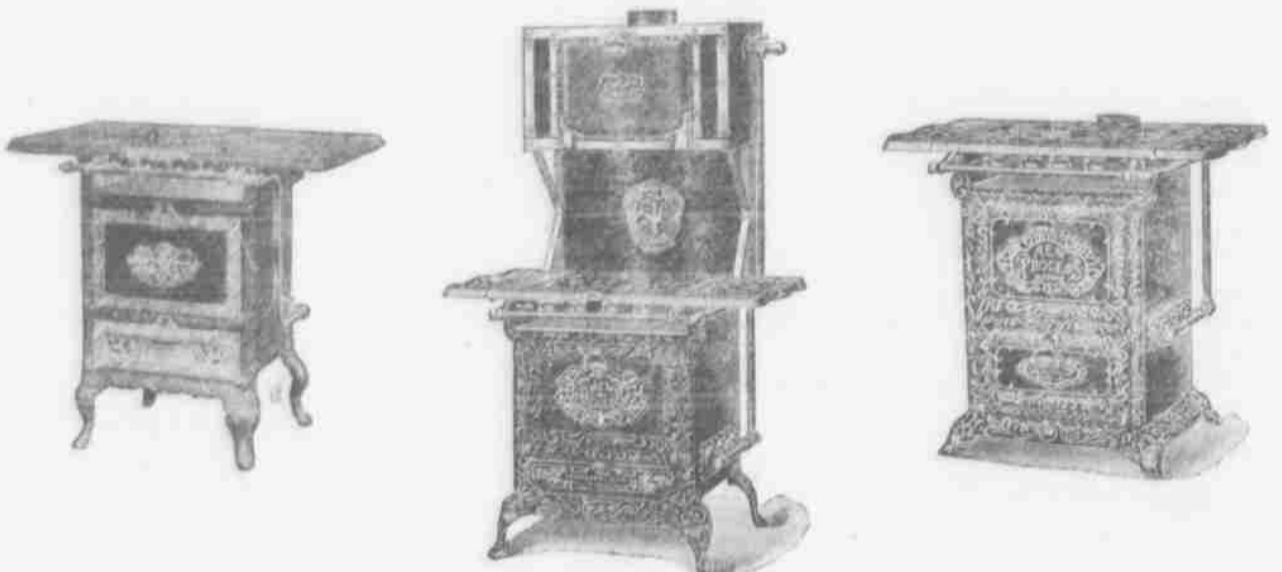
No other liniment affords such prompt relief from rheumatic pains. No other is so valuable for deep seated pains like lame back and pains in the chest. Give this liniment a trial and become acquainted with its remarkable qualities and you will never wish to be without it. For sale by all dealers, Benson, Smith & Co., agents for Hawaii.

Only the chemistry of nature is employed in the manufacture of Rainier Beer. It is wholesome, invigorating and genuine.

Printed by the Job Printing Star Office.

NEW PROCESS GAS RANGES

are the Gas Ranges that we carry in stock for the Honolulu public or our many customers. The entire line is on display and we extend to all a cordial invitation to come and have explained the advantages and superiority of these pre-eminent ranges.



With a view of offering you the best Gas Range made, months time has been devoted in having impartial, exhaustive experiments of the supposed best ranges to determine which was really best. The New Process proved to be the most up-to-date range made and greatest gas saver. The facts convinced us and this is why we carry New Process Gas Range and are its sole agents in the Territory of Hawaii.

W. W. DIMOND & CO.,

53, 55, 57 King Street, Honolulu, Hawaii

PORTUGUESE WANTED FOR QUARRY WORK

JAPANESE AT THE BIG WAHIAWA DAM WILL NOT WORK REGULARLY—PROGRESS OF WORK.

Contractor Kellogg, who is building the big Wahiawa dam, was in Honolulu yesterday seeking a number of Portuguese quarrymen for work at Wahiawa in connection with the dam. Japanese have been employed heretofore, but it is said that they are not delivering the stone fast enough for the other work, and the completion of the dam is thus being delayed. The trouble with the Japanese, it is said, is not that they cannot work fast enough, but that they won't. There are forty-five men employed at the quarry, but out of that number it is said that there have not been more than fifteen on the average at work each day. The others pretend to be sick, or to have some relative who is sick, or they want to go to Honolulu for the day, or to Waialua, or they idle around the camps doing nothing.

KUHIO'S SUIT.

Judge Dole yesterday heard argument on a motion filed by Kloney, McClannan and Cooper in the case of Kuhio against the Pacific Mail Steamship company, in which damages are asked for a suit case damaged on the Mongolian. The motion is to quash the service of summons. It was taken under advisement.

PAINFUL ACCIDENT.

Ensign Galbraith of the U. S. S. Lawton fell at the Moana Hotel yesterday afternoon and sustained a fracture of one of his legs. He was removed to the vessel.

Fairly, Wholesomeness and Flavor are the principal requirements of a successful beverage—the United States Government report vouchers for the first two and the verdict of the consumer for the last—Rainier Beer.

AT OAHU PRISON

On Sunday morning at 11 o'clock under the auspices of the Y. M. C. A., there will be given a special program for the benefit of the prisoners at Oahu prison. The program has been arranged by Miss Crockett, who has appeared frequently at the prison with some form of entertainment for those confined within, and as she goes away on the China this will be her last appearance there. John Martin is chairman of the committee in charge. A feature will be the singing of Fred Butler. The program is as follows: Organ Prelude. Miss Christie Waller. Prayer. Mr. Martin. Song by Congregation—Page 191. Recitation—"Yes I'm Guilty." Miss Ray Bell. Prison Quartet. Recitation—"Roger and I." Gilbert Waller. Song by Congregation—"Rock of Ages" 221. Reading on Prayer. Miss Crockett. Flower Song. Seven Little Girls. Psalm XXIII—Eola Logan, Leonie Vogel, Eleanor Phillips, Jessie Mac-

AT OAHU PRISON

Recitation—(a) "The Rose and the Poppy" Recitation—(a) "A Very Little Girl's Speech" Beatrice Waller. (b) "Dear Little Angel" Geraldine Traphagen. Song by Congregation—"Stand Up for Jesus" page 223. Recitation—"The Bridge." Miss Ruth Waller. Recitation—"Three Little Rugs in a Basket" Ruth McChesney. Recitation—"The Dying News Boy" Esther Waller.

SCHOONER FROM MAHUKONA.

The schooner Ka Mo arrived this morning with a load of sugar from Kohala.

WATERMELONS IN TOWN.

The schooner Lady arrived this morning from Koolau ports with a load of watermelons.

Want ads in the Star bring quick returns. Three lines three times for 25 cents.

And Don't You Forget

That the evening's meal will not be satisfactory; will not seem complete without a supply of

RAINIER BEER

It puts health and happiness in every one of the family

RAINIER BOTTLING WORKS, AGENTS Phone White 1381 P. O. Box 517

BANK OF HAWAII

LIMITED.
Incorporated Under the Laws of the Territory of Hawaii.

PAID-UP CAPITAL.....\$600,000.00
SURPLUS.....200,000.00
UNDIVIDED PROFITS.....102,617.90

OFFICERS.
Charles M. Cooke.....President
P. C. Jones.....Vice-President
F. W. Macfarlane.....2nd Vice-President
C. H. Cooke.....Cashier
C. H. Hustace Jr.....Assistant Cashier
F. B. Damon.....Assistant Cashier
F. B. Damon.....Secretary
DIRECTORS: Chas. M. Cooke, P. C. Jones, F. W. Macfarlane, E. F. Bishop, E. D. Tenney, J. A. McCandless, C. H. Atherton, C. H. Cooke.

COMMERCIAL AND SAVINGS DEPARTMENTS.
Strict attention given to all branches of Banking

JUDD BUILDING, FORT STREET.
Claus Spreckels, Wm. G. Irwin.

Claus Spreckels & Co. BANKERS

HONOULULU, H. I.
San Francisco Agents—The Nevada National Bank of San Francisco
DRAW EXCHANGE ON SAN FRANCISCO—The Nevada National Bank of San Francisco.
LONDON—Union of London & Smith's Bank, Ltd.
NEW YORK—American Exchange National Bank.
CHICAGO—Corn Exchange National Bank.
PARIS—Credit Lyonnais.
BERLIN—Dresdner Bank.
HONGKONG AND YOKOHAMA—The Hongkong and Shanghai Banking Corporation.
NEW ZEALAND AND AUSTRALIA—Bank of New Zealand, and Bank of Australasia.
VICTORIA AND VANCOUVER—Bank of British North America.

TRANSACT A GENERAL BANKING AND EXCHANGE BUSINESS.

Deposits Received. Loans Made on Approved Security. Commercial and Travellers' Credits Issued. Bills of Exchange Bought and Sold.

COLLECTION PROMPTLY ACCOUNTED FOR.

BISHOP & CO. BANKERS

BANKING DEPARTMENT.
Transact business in all departments of banking.
Collections carefully attended to.
Exchange bought and sold.

Commercial and Travellers' Letters of Credit issued on the Bank of California and N. M. Rothschild & Sons, London.

Correspondents for the American Express Company, and Thos. Cook & Son.

Interest allowed on term and Savings Bank Deposits.

TRUST DEPARTMENT.
Act as Trustees, collect Rents and Dividends.
Safety Deposit suits.

ACCOUNTANT DEPARTMENT, 925 Bethel Street.
Auditors and Trustees in Bankruptcy Books examined and reported on.

INSURANCE DEPARTMENT, 924 Bethel Street.
Agents for Fire, Marine, Life, Accident and Employers Liability Insurance Companies.

THE YOKOHAMA SPECIE BANK

Limited.
ESTABLISHED 1850.

Capital Subscribed.....Yen 24,000,000
Capital Paid Up.....18,000,000
Reserve Fund.....9,720,000

HEAD OFFICE, YOKOHAMA.
Branches:
Honolulu, New York, San Francisco, London, Lyons, Bombay, Hongkong, Newchwang, Peking, Shanghai, Tientsin, Kobe, Nagasaki, Tokio.
The Bank buys and receives for collection Bills of Exchange, issue Drafts and Letters of Credit, and transacts a general banking business.

Honolulu Branch 67 King Street

T. HAYASHI, TAILOR.
Clothes Cleaned, Dyed and Repaired.
637 Barotania Street, Opposite Queen's Hospital.

CHEE HOON KEE, Plumber
Hotel Street near Maunakea.

LOUI CHEE, MANAGER.

Want ads in the Star bring quick returns. Three lines three times for 25 cents.

Russian Cavalry Raid



Gen Mistchenko

(Associated Press Cable)

ST. PETERSBURG, May 27.—General Mistchenko raided Koko man and annihilated two companies of Japanese, capturing five officers and 234 men and dispersed a transport train.

FLAG DAY IN PUBLIC SCHOOLS

SUPERINTENDENT DAVIS NOTIFIES PRINCIPALS TO PREPARE PROGRAMMES FOR THE DAY.

A circular letter has been sent to principals of schools by Superintendent of Public Instruction Davis, calling attention to Flag Day exercises, as follows:

"Dear Sir: June 14th being the 125th anniversary of the adoption of the stars and stripes as the flag of the United States, the Department of Public Instruction of this Territory respectfully requests that the day be observed with appropriate exercises. The Department suggests the following program:

- Salutation of the flag.
- Song—"America" by the school.
- Address—"History of the Flag" by the principal.
- Song—"Star Spangled Banner" by the school.
- Recitation—"The American Flag" by pupils.
- Song—"Battle Hymn of the Republic" by the school.
- "This is simply suggestive; each principal is at liberty to make his own program. This program will form a part of the regular school work of the day.
- (Signed) "JAMES C. DAVIS, Superintendent of Public Instruction."

The celebration was suggested in a letter to Governor Carter from the American Flag Association. The day is to be celebrated all over the United States, and in Guam, Samoa, the Philippines and Alaska.

REALTY TRANSFERS

Entered for Record May 26, 1905.
Zeida Cunha and her to Port Mut Ben Soy of Haw.....M
John H Nui and wf to Pioneer Bldg & Loan Assn.....M
Acho to Wing Wo Tai Co.....C M
Acho to Tung Soon.....C M
Emil Klemme by Regr.....Notice
Tong Sang Co to Siu Oi.....Notice
Wing On Tai Co to Lam Kam Chin P A William H Pain by atty and mtgee to H Pocke.....M
R R Vida by atty to F W Macfarlane.....M
William O Smith Tr to W M Minton.....P R
Wm M Minton and wf to Elmer M Cheatham et al.....D

Recorded May 19, 1905.
J G Henriques and wf to J R Soares M; R Ps 1184 and 6463, Kalamauhi 2, S Kona, Hawaii, \$1200. B 271, p 5. Dated Aug 1, 1904.
Manu Nakahuna (K) to Kamila Smith, L; int in por lot 159, Kahului 10, Wailuku, Maui 49 7/8 ac \$1 and love. B 273, p 66. Dated May 13, 1905.
Claus Spreckels & Co by atty to E C Hobron, Par Rel; lots 19 and 20 blk 7E, Kapahulu tract, Honolulu, Oahu \$200. B 271, p 8. Dated May 16, 1905.
J C Holt Hobron and wf to Frances S Capellas, D; lots 19 and 20 blk 7E, Kapahulu tract, Honolulu, Oahu, \$1000. B 269, p 179. Dated May 15, 1905.
Kekula and her to S M Damon, D; int in por R P 254 kul 1236, Moanahua, Honolulu, Oahu, \$250. B 269, p 180. Dated Mar 22, 1905.
Mary J Alexander by atty to Gear, Lansing & Co by Trs, Par Rel; lot 1 blk 15, Kaimuki tract, Honolulu, Oahu, \$400. B 271, p 9. Dated May 17, 1905.
Emily C Judd by atty to Geo W Farr Tr, Rel; por lot 7 and 9640 sq ft land, Kapahulu, Honolulu, Oahu, \$2000. B 221, p 399. Dated May 17, 1905.
Lee Hop Co to Tam Pong, B8; int in leasehold, bldgs, banana crops, tools etc, Pawaan, Honolulu Oahu, \$150. B 265, p 404. Dated Jan 13, 1903.
Tam Pong to A J Campbell, C M; leasehold, growing crop, mehony, tools, etc, Pawaan, Honolulu, Oahu, \$1150. B 271, p 10. Dated May 19, 1905.
B Onomea to Olan Sugar Co Ltd, C M; cane on lots 28, 37, 38, 40 and

HAWAIIAN BOARD ELECTS OFFICERS

COMMITTEES APPOINTED UNDER WHOM WORK AMONG NATIONALITIES WILL BE CARRIED ON.

The following officers have been elected and committees appointed for the Hawaiian Board. The General secretary and the executive head of the work is Rev. Dr. Doremus Scudder.

President, P. C. Jones; vice president W. W. Hall; recording secretary, Rev. W. D. Westervelt; auditor Frank C. Atherton.

On Hawaiian Work: Dr. Sereno E. Bishop, chairman; Frank C. Archer, Oramel H. Gulick, John L. Hopwood, Peter C. Jones, James A. Rath, William D. Westervelt.

On English and Portuguese Work: William A. Bowen, chairman; Frank C. Atherton, W. R. Castle, A. Frank Cooke, Antonio V. Soares Edward B. Turner W. D. Westervelt.

On Japanese Work: William W. Hall chairman Dr. W. D. Alexander Charles H. Atherton Charles M. Cooke Oramel H. Gulick Perley L. Horne William M. Kincaid.

On Chinese Work: F. J. Lowrey, chairman; George P. Castle, Samuel M. Kaniakani, Arthur M. Merrill, Edward W. Thwing, Edward B. Turner, W. L. Whitney.

On Educational Work and Publications: Hiram Bingham, chairman; David Al. W. R. Castle, Perley L. Horne, Theodore Richards, Edward S. Timoteo.

On Finance: Theodore Richards, chairman; Charles M. Cooke, Peter C. Jones, Frederick J. Lowrey, W. O. Smith.

Rev. O. H. Gulick was appointed superintendent of the Hawaiian and Japanese work, and Rev. E. W. Thwing of the Chinese work. Agents for the board were appointed as follows:

Kona, Rev. A. S. Baker; Kohala, R. A. Buchanan; Maui and Molokai, Rev. O. P. Emerson; Kauai, J. M. Lydgate; Oahu, Rev. W. D. Westervelt; East Hawaii, C. W. Hill; Hilo, Curtis E. Shields.

NEW PASTOR COMING.
The Rev. G. D. Edwards, of Nevada, Missouri, is coming here in September to take the pastorate of the local Christian church. The Rev. Edwards is very highly spoken of in his former home, and the community much regretted his decision to leave. He is a graduate of the University of Missouri with the degrees of A. B. and A. M. and is spoken of as an eloquent preacher. His wife and young son will come with him in September.

GRINBAUM MAKES CLAIM.
In the suit of Kaneohe Ranch Co. vs. L. Ahlo with Royal Insurance Co., garnishee, a claim has been entered by M. S. Grinbaum & Co., Ltd., of a lien on all moneys owing L. Ahlo by the Royal Insurance Co. The net amount due under the insurance case judgment is \$271.25. An answer is filed by the garnishee admitting the judgment debt as just stated, saying that \$81.25 attorneys' fees and \$8 court costs are claimed out of it and setting up the Grinbaum claim of lien. A power of attorney is attached to both documents in which Ahlo authorizes the Grinbaum company to collect his insurance money and out of it pay his indebtedness to M. S. Grinbaum & Co., Ltd., M. Phillips & Co., Hoffschlager Co., Ltd., and Von Hamm-Young Co., Ltd., rendering the balance to Ahlo.

45, Olan tract, Puna, Hawaii. \$1 and advs. B 271, p 12. Dated May 20, 1901
Kaliuli (K) et als to Dowseff Co., Ltd, Agrom; in re ownership of land, Puna, Oahu, B 265, p 496. Dated Apr 22, 1905.
Hannah K Lowe and her by mtgee to Lucy K Henriques, Fore Aftt; por R P 6305 and gr 3106, Makiki St, Honolulu, Oahu; R P 4801 and pe land and bldg, Hokuikano 1, N Kona, Hawaii. B 271 p 18. Dated May 15, 1905.

THE STEIN-BLOCH DOUBLE BREASTED AND SINGLE BREASTED SUITINGS.

—a welcome concession to the wide spread demand of masculine America for comfort in the dog days. Lined a trifle around the shoulders with alpaca, the rest sheer featherweight fabric, loose, free, easy. The seams piped with uncommon care and neatness, showing the curious what pains-taking tailoring can accomplish. The trousers a bit "hippy" and looped for belting. Bottoms turn-up-able (or not). Waistcoatless of course, and for wear in town or out where the sun is working over-time. Materials, imported flannels in a regiment of grey and brown tones, mixtures and stripes, fine fancy worsteds, homespuns and the ever popular blue serges. All pure wool.

M. MCINERNEY, LTD. MERCHANT AND FORT STS.

FOREIGN STEAMER TIME TABLE

Date.	Name.	From.
May 2	Sierra	Colonies
3	Manuka	Colonies
3	Ventura	San Francisco
6	Miowera	Victoria, B. C.
9	Siberia	Yokohama
10	Korea	San Francisco
12	Alameda	San Francisco
13	Nebraskan	San Francisco
19	Mongolia	Yokohama
19	Coptic	San Francisco
23	Sonoma	Colonies
24	Sierra	San Francisco
30	China	Yokohama
31	Aorangi	Colonies
June 2	Alameda	San Francisco
3	Siberia	San Francisco
3	Manuka	Victoria, B. C.
9	Nevedan	San Francisco
13	Ventura	Colonies
13	Manchuria	Yokohama
14	Sonoma	San Francisco
20	Doric	Yokohama
23	Alameda	San Francisco
24	China	San Francisco
25	Miowera	Colonies
30	Nebraskan	San Francisco

STEAMERS TO DEPART.

Date.	Name.	For.
May 2	Sierra	San Francisco
3	Manuka	Victoria, B. C.
3	Ventura	Colonies
6	Nevedan	San Francisco
6	Miowera	Colonies
9	Siberia	San Francisco
10	Korea	Yokohama
17	Alameda	San Francisco
19	Mongolia	San Francisco
19	Coptic	*Yokohama
23	Sonoma	San Francisco
24	Sierra	Colonies
27	Nebraska	San Francisco
30	China	San Francisco
31	Aorangi	Victoria, B. C.
June 2	Siberia	Yokohama
3	Manuka	Colonies
7	Alameda	San Francisco
13	Ventura	San Francisco
13	Manchuria	San Francisco
14	Sonoma	Yokohama
14	Sonoma	Colonies
17	Nevedan	San Francisco
20	Doric	San Francisco
24	China	*Yokohama
23	Alameda	San Francisco
25	Miowera	Victoria, B. C.

* Calling at Manila.
† Date of departure from Kahului. U. S. A. Transports will leave for San Francisco and Manila, and will arrive from same ports at irregular intervals.

Half the pleasure in dining is in congenial company—order Rainier Beer and your joy will be complete.

REMINGTON Standard Typewriter

PAPERS, RIBBONS, CARBONS, LETTER BOOKS, EYELET PRESSES, PENCILS, ERASERS, PAPER FASTENERS, ETC., ETC., ETC.

OFFICE SUPPLIES OF ALL DESCRIPTION. REPAIRING A SPECIALTY.

HAWAIIAN OFFICE SPECIALTY COMPANY
Tel. Main 15. 72 King St., "Waity Block."

A Cleanable Refrigerator

The "Leonard Cleanable Refrigerator" is the best, safest and most economical refrigerator on the market. We shall be happy to explain its numerous advantages over other refrigerators if you will call.

H. Nackfeld & Co., Ltd

Be Comfortable

Comfort causes the wheels of life to revolve merrily upon the axle of time. In no place is comfort more appreciated than in the home. Nothing is more conducive to home-comfort than

Incandescent Electric Light

Electric lights don't have to be refilled or rewicked. They don't make a smell and they won't explode. A touch of the button and a soft steady light is turned on. Why be without this greatest of modern conveniences?

Hawaiian Electric Co., Ltd. 223-227 King Street

Sheppard's Loose Leaf Ledgers

are the best and no office where good book-keeping is a desideratum should be without them.

THEY ARE THE ONLY LOOSE LEAF LEDGERS THAT COMBINE A PATENT INDEX WITH INNUMERABLE OTHER ADVANTAGES.

An index represents half the value of a ledger. Loose Leaf Ledger indices represent perhaps a little more than half.

PRICE, \$20.00

HAWAIIAN NEWS CO, LTD

ALEXANDER YOUNG BUILDING.

CHOICE GOODS

Ladies' Silk Kimonos.....\$6.50
Children's Silk Kimonos.....2.75
Silk Short Kimonos.....2.75
Japanese Silks (in all colors) per yard.....3.25
Silk Cushion Covers with Coat of Arms, Silk Linen and Cotton Handkerchiefs, Japanese Purses for ladies, Japanese Screens and latest styles of Vases at very low prices.

K. FUKURODA,

25 and 22 Hotel St. Robinson Block.

CHICAGO... IN LESS THAN 3 DAYS

and over The Only Double-Track Railway between the Missouri River and Chicago.

Three Fast Trains Daily

VIA SOUTHERN PACIFIC, UNION PACIFIC AND CHICAGO & NORTHWESTERN RAILWAYS.

Overland Limited, Vestibuled. Leaves San Francisco at 11:00 a. m. Daily. The most Luxurious Train in the World. Electric Lighted Through-out. Double Drawing-Room, Sleeping Cars, Composite, Observation, Buffet Smoking and Library Car. Dining Cars, Meals a la Carte. Less than three days to Chicago without change.

Eastern Express, Vestibuled. Leaves San Francisco at 6:00 p. m. Daily Through Pullman Palace and Tourist Sleeping Cars to Chicago. Dining Cars. Free Reclining Chair Cars.

Atlantic Express, Vestibuled. Leaves San Francisco at 9:00 a. m. Daily. Standard and Tourist Sleepers.

PERSONALLY CONDUCTED EXCURSIONS
Wednesdays, Thursdays and Fridays. The best of everything.

Chicago & Northwestern Ry.

R. R. RITCHIE, G. A. P. C.
or S P Company's Agt 617 Market St. (Palace Hotel) San Francisco.

Fire Insurance!

Atlas Assurance Company of London.
Phoenix Assurance Company of London.
New York Underwriters Agency.
Providence Washington Insurance Company.
Phoenix Insurance Company of Brooklyn.
Fourth Floor, Stangenwald Building.

THE B. F. DILLINGHAM CO., LIMITED

General Agents for Hawaii.

CONSOLIDATED SODA WATER WORKS COMPANY, LTD.

Esplanade, cor. Allen and Fort Sts
Manufacturers of Soda Water, Ginger Ale, Sarsaparilla, Root Beer, Cream Soda, Strawberry, Etc. Etc.

New Goods! New Goods!!

Our Ready-to-wear Apparel Department commands attention this week and we would direct to your careful consideration our stock of

REDINGOTE COSTUMES

which are being so much talked about at present. We have just received a few sample suits of this fashionable wear and they are well worth your attention. They are made of washable material in white linen, cream canvas, voiles and linen color materials.

NEW WHITE LAWN SHIRT WAIST SUITS, trimmed with new style embroidery and with latest cut skirt, \$4.50.
VERY STYLISH WHITE LAWN SHIRT WAIST SUITS, waist and skirt elaborately trimmed with newest embroidery \$4.50.

WHITE LINEN SHIRT WAIST SUITS, strictly tailor made, button trimmed and very natty, \$5.50.
LADIES' FANCY COLORED SILK SHIRT WAIST SUITS, in all the stylish shades and newest designs of silk. And upwards \$12.00.

WHITE SILK SHIRT WAIST SUITS made of washable silks, strictly tailored and quite "the thing". And upwards \$12.00.

A few very handsome **PATTERN SUITS** in exclusive styles; white organza, elaborately trimmed; also in silk. Very chic and high-class. Must be seen to be appreciated.

Our new Walking skirt, of cravotte material, tailor made and wonderfully cheap, \$1.75. Ladies' Khaki Divided Riding Skirts. A few Samples on Sale.

W. S. SACKS' DRY GOODS CO. LTD., Cr. Fort and Bercania Sts.

COUNTY ACT BUTTERS-IN

(Continued from page 13)

he said, should never have been sent to prison.

But whether he should have been sent there or not did not dispose of the fact that he was there, so J. A. Akina was appointed to the positions made vacant by Kumalae's unavoidable absence. A motion to excuse Kumalae from further attendance would have been in order but apparently it was not considered necessary.

The Home Rule convention, up to noon today, had not got very far on with its work. Pending the decision as to fusion, which had not been reached, it was plain that little could be done in the way of nominations, but some names were put before the meeting and these will be among those voted upon tonight.

Ex-Senator D. Kalanokani, the president, was in the chair, and D. Kuphea, the secretary, was also present. There were in attendance 29 delegates from the Fourth and 35 from the Fifth District whose credentials were declared in good order.

The president opened with a speech in which he explained the meaning of the proposition of fusion with the Democrats and also the necessity of choosing candidates for the Oahu county elections.

The following were appointed a committee to proceed with the conference with the Democrats: Jonah Kumalae, chairman, J. K. Nakasoko, J. M. Kealoha, S. K. Mahoe, J. A. Akina, William Moseman and Charles Nottley. The committee on platform appointed was: D. M. Kuphea, chairman, J. M. Poopoe and Jonah Kumalae.

While the conference committee was away the nominations for candidate for sheriff were opened with the result that the following were named: Arthur M. Brown, J. M. Poopoe and Charles Nottley. There was one nomination for Deputy Sheriff of Honolulu, that of Charles F. Chillingworth. For County Clerk John Nottley and D. Kalanokani, Jr. were put up; for Auditor, Jesse P. Makimal and for Supervisor-at-Large D. M. Kuphea.

For Honolulu supervisors a number of names were put up and the ticket will, presumably, be chosen at tonight's meeting.

Nottley here returned with the dire news that the vice-chairman had been impounded in Oahu Prison and it was some time before the work of the convention went on. A draft of the platform was read over and will be discussed this afternoon.

THE CUMMINS CASE

A demurrer was sustained today by Judge Lindsey in the case of J. A. Cummins vs. J. O. Carter, trustees for J. A. Cummins, and about twenty other defendants. This is the case in which Cummins is seeking to break a trust deed which he executed a number of years ago. The decision sustaining the demurrer allows ten days for filing of an amended complaint.

HENRY SIEG CARTER

High Sheriff Henry made a report to Governor Carter this morning on returning from Lahaina, reporting that conditions appeared to be very satisfactory at Pioneer. The High Sheriff is disposed to think as a result of his experience that the militia should be maintained, but it is not thought likely that the legislature will reconsider the matter now.

MAY BID PROPERTY IN

Judge Lindsey this morning signed an order granting the petition of Philip and Solomon Peck that they be allowed to bid for and buy property of the estate of Ely Peck deceased. The petitioners are administrators and state that it is necessary to sell in order to distribute the various bequests. The property which they desire to be allowed to bid for is 100 shares of Hui-tee-Peck Company and real estate, including twelve cottages on Vineyard street.

FUNA SALE POSTPONED

Judge De Bolt this morning granted another postponement, for 14 days, of the foreclosure sale of the Puna sugar company property. The postponement was on showing of an affidavit by H. P. Ollinghouse that an arrangement for the purchase of the property has been made, but that the final consummation has not been made owing to the length of time needed for mail communication with San Francisco.

DESERTED VERY SOON

Judge Lindsey this morning granted a divorce in the case of Maria Naanao vs. Atu Naanao, on the ground of desertion. The couple were married in 1900, and the plaintiff testified that she was deserted one week after the wedding. Frank Andrade appeared for plaintiff.

The Woman's Auxiliary and Guild of St. Andrew's Cathedral will meet next Monday at 2:30 p. m. with Mrs. E. D. Tenney. Those who have not already handed in their leuten offering for mission to the Auxiliary are requested to do so at this meeting. The first game of league baseball this afternoon will be played between the Punaluu and the H. A. C's.

HALEIWA

The Haleiwa Hotel, Honolulu's famous country resort, on the line of the Oahu Railway, contains every modern improvement and affords its guests an opportunity to enjoy all amusements—golf, tennis, billiards, fresh and salt water bathing, shooting, fishing, riding and driving. Tickets, including rail fare from Honolulu, for two persons and board, are \$14.00 for 14 days, and \$20.00 for 21 days. For particulars of rates, inquire of the Haleiwa Hotel, or the Haleiwa Hotel, P. O. Box 10, Honolulu, T. H.

THE GEORGIA JUDGE'S DECISION

The Georgia judge's decision that chain gang work is wrong will be heartily endorsed by prisoners who object to having their rest disturbed.

New York Day By Day

"New York Day by Day" was presented to a full house at the Orpheum last evening by the Elford Company. The plot is simple enough, without any subtle developments, and the play is one which appeals to the stronger emotions of humanity. The actors respectably repeated this evening.



MYRTLE SELWYN: ELLEFORD COMPANY.

The same bill will be revealed in its broad, florid, melodramatic effects, the sins and sorrows, virtues and vices of the dramatic personae, and the audience laughed, cried and applauded, many being unable to obtain admission.

GRAFTERS JAILED

(Continued from page one)

The other members of the committee and one of other witnesses showed that the voucher was a pure fake, the services never having been performed at all.

The decision of the Supreme Court contains a number of very important rules of law, sustaining Judge De Bolt's rulings on many difficult points raised during the trial. It is by Chief Justice Frear, Hartwell and Wilder concurring. The syllabus contains the following:

"The provision of Act 22, Sec. 7, Laws of 1902, that there may be one or more sessions of the Circuit Court of the First Circuit at the same time and that each session may be held by one of the judges is not in conflict with the Organic Act.

"If any error was committed in striking defendant's motions to quash the indictment and challenges to the grand jury from the files, it was harmless for the reason that the grounds upon which they were based were afterwards made the subject of a plea in abatement, which was considered on its merits.

"When Winfred H. Babbit appeared and served as a grand juror in response to a summons to Winfred H. Babbit, the variance was not fatal, as the names are within the rule of idem sonans.

"The finding 'a true bill' signed by the foreman of the grand jury, although at the foot instead of on the back of the indictment, is an 'indorsement' within the meaning of rule 17 relating to grand juries.

"A conspiracy to commit a criminal offense of lower grade than the conspiracy is not merged in such offense when completed.

"Although two independent offenses cannot be charged as such in the same court, it is usual and proper to set forth in an indictment for conspiracy the acts done in pursuance of the conspiracy, and it is immaterial that such acts constitute an offense, provided they are charged merely by way of aggravation or otherwise as done in pursuance of the conspiracy, and not as an independent offense.

"The constitutional provision for a speedy trial was not violated by a refusal to proceed at once with the trial and a continuance to the next term, when the request to proceed was made on Monday of the last week of the term, the day on which the plea of not guilty was made, and the next term began the following Monday.

"A plea of not guilty waives objections to grand jurors, and a refusal to leave to withdraw such plea for the purpose of filing a plea in abatement based on the ground that one of the grand jurors was disqualified is within the discretion of the trial court, not subject to reversal except in case of abuse.

"Conspirators jointly indicted are not entitled to separate trials of right, and a refusal to allow them to be tried separately is within the discretion of the trial court, not subject to reversal except in case of abuse.

"An exception to the overruling of a motion to quash a special venire of trial jurors based on irregularities alleged to have been made at previous terms affecting the list of names in the trial jury box, cannot be considered when the records alleged to show such irregularities are not brought to this court.

"A juror is not necessarily disqualified because he has an opinion which it would require evidence to remove. The question is whether he could decide fairly and impartially on the law and the evidence in the case, and that is a question largely in the sound discretion of the trial judge.

"On the trial of a member of the House of Representatives for conspiracy, remarks made by him in the House may be shown by the testimony of one who heard them; the House Journal is not the only evidence of what was said."

G. W. Ashford appeared for defendant in the lower court, and Ashford and S. P. Humphrey in the Supreme Court. Attorney General Andrews and Assistant W. S. Fletcher appeared for the Territory.

THE GAS RANGE READY FOR WORK

The gas range or gas cooking stove is probably the newest appliance of modern convenience the Honolulu housekeeper will have to deal with. The gas company is at work now and has gas to burn. W. W. Dimond & Company are the pioneers in introducing these conveniences to Honolulu, and after making thorough tests of all the various makes and patterns in the market have adopted the "New Process" as the one that offers the most advantages. One of the special features of this is the tangent burner, which gives an even distribution of heat no matter what the variations of pressure may be. It is also the most economical in the use of gas, a fact that cannot fail to appeal to the housekeeper.

Dimond & Company have these ranges and appliances in several patterns on exhibition at their store, all connected up with the gas mains, and an expert on hand to explain their workings and advantages. Nothing can be more convenient or economical than a gas range. There is no danger. There is no dirt. It is all ready when wanted, and its consumption ceases as soon as its work is done.

GOVERNOR KNOCKS OUT MANY ITEMS

VETOES NINETEEN SEPARATE ITEMS IN UNPAID BILLS ACT—PHARMACY BOARD NOMINEES.

But nine Senators were present at the opening of the 20th day of the extra session. At the conclusion of the reading of the minutes, a message was received from the Governor nominating R. B. Reedy, Samuel S. Peck and William L. Moore members of the Territorial Board of Pharmacy for two years. The nominations will be acted on Monday.

The governor informed the House that he had signed Act 4, marking appropriations for the departmental use of the Territory. The letter was filed.

The House sent a notification that it had concluded its business and was ready to adjourn, communicated filed. From the Public Lands Committee McFarland presented the following report, which was laid on the table to be considered with the bill:

"Your Committee on Public Lands, Internal Improvements, Agriculture, etc., to which was referred House Bill No. 7, begs leave to report that the object of the bill is to amend the Loan Bill of the 1903 Session by transferring the appropriations from one item to another.

"As provision for the items sought to be attached by the passage of the bill under consideration has been made in the Loan Bill passed at this Session of the Legislature, we would recommend that the bill be laid on the table."

Lane made a report as a minority of the Judiciary Committee, protesting against tabling the governor's appointments of election commissioners, and recommending the immediate confirmation of the nominations. The report was laid on the table to be considered with the majority report.

At this point a second message from the governor was received. He returned Senate Bill No. 6, making special appropriations to pay unpaid bills up to July 1. The governor stated that he was unable to approve the following items, giving his reasons in each case at some length.

Mrs. Kanaokahelo, claim for 1903 (Continued on page eight)



WHY NOT RENT A SAFE DEPOSIT BOX in a modern steel vault and feel that your valuables are secure? **FIVE DOLLARS** a year pays for one. Call and see us about it.

DAILY STOCK REPORT

Between boards 5 Ewa, \$27.50; 22 Ewa \$27.50; 5 Ewa, \$27.50; 73 Ewa, \$27.50; \$5,000 Waiatua 6s, \$101.50; \$1000 Waiatua 20 101.50; \$4000 Waiatua 6s 101.50; Season sales: 20 Pioneer \$152.50.

Stock	Bid	Asked
C. Brewer & Co.	5	\$450.00
Ewa	27.25	27.50
Haw. Agr. Co.	85.00	
Hawaiian Sugar	31.75	32.00
Honolulu Sugar Co.	150.00	150.00
Honokaa	17.50	18.75
Hauku Sugar Co.		32.50
Kihel	30.00	32.00
Kipahulu		37.50
Kolosa Sugar Co.		150.00
McBryde	7.50	7.75
Oahu Sugar Co.	115.00	120.00
Onomea	35.75	36.00
Ookala	7.25	8.00
Oloa Sugar Co.		5.50
Olovalu Co.		100.00
Pacific		249.00
Paia Plantation Co.		175.00
Pepeskee		150.00
Pioneer		151.50
Waiatua Agr. Co.	57.50	60.00
Waiuku Sugar Co.		275.00
Waimanalo		150.00
Waipahoehoe		145.00
Wilder S. S. Co.		145.00
Hawaiian Electric		105.00
Mutual Telephone	9.00	9.25
Cal. & Haw. S. R. Co.		100.25
Ewa Plan. Co. 6s.		100.00
Hauku Sugar Co. 6s.		102.50
Haw. Com. 5s		101.00
00'01'		89.00
Hon. R. T. 6s.		105.00
Kahuku 6s.		100.00
Oahu Sugar 6s.		101.50
Paia 6s.		102.50

ARE YOU? Are you a time killer? Do you stand about talking when you should be disposing of duties that press upon you? Do you hang around home when you should be at your office? Do you put off until 9:30 o'clock the things that might just as well be done at 9?

Star Want Ads pay 25 cents.

NEW ADVERTISEMENTS.

WING WO TAI & CO.

Have received a large line of embroidered gesses linen shirt waists.

BY AUTHORITY

PUBLIC LANDS NOTICE.

On Friday, June 9th, 1905, at 12 o'clock noon, at the front entrance to the Judiciary Building, Honolulu, will be sold at Public Auction, the leases of the following named lands:

1. 3675 acres, a little more or less, of the grazing land of Nakala, Kaupa, Maui. Term, 21 years from September 1st, 1905. Upset rental, \$50.00 per annum, payable semi-annually in advance.
2. 240 acres, a little more or less, of the grazing land of Opihiale, S. Kona, Hawaii. Term, 21 years from June 9th, 1905. Upset rental, \$250.00 per annum, payable semi-annually in advance.

For plans and particulars, regarding lands and conditions of lease, apply at the Department of Public Lands, Honolulu.

JAR. W. PRATT, Commissioner of Public Lands, Honolulu, May 9th, 1905. 61s—May 9, 13, 27, June 3, 8.

WAIMANALO SUGAR CO.

The stock ledger of the Waimanalo Sugar Company will be closed to transfers from May 21st to May 31st.

W. L. HOPPER, Secretary Waimanalo Sugar Co.

OLOWALE SUGAR CO.

The stock ledger of the Olowale Sugar Co. will be closed to transfers from May 21st to May 31st, both dates inclusive.

RICHARD IVINS, Secretary Olowale Sugar Co.

For Sale!

Barred Plymouth Rock eggs. Fowls from the best country yards in California. \$2 per 13; \$5 per 40. Room No. 6, Magara Building.



ELBERT HUBBARD AND HIS SON SANFORD.

A Summer Proposition.
 Well, now, during the
ICE QUESTION!
 You know you'll need ice. You know it is a necessity in hot weather. We believe you are anxious to get that ice which will give you satisfaction, and we'd like to supply you. Order from
THE OAHU ICE & ELECTRIC CO.,
 Telephone, 1351 Blue, Postoffice Box 606.

W. G. IRWIN & CO., LTD.,
 Wm. G. Irwin, President and Manager
 John D. Sprickola, First Vice-President
 W. M. Colford, Second Vice-President
 H. M. Whitney, Treasurer
 Richard Lyers, Secretary
 A. C. Lovelock, Auditor

SUGAR FACTORS, COMMISSION AGENTS
 AGENTS FOR
 Oceanic Steamship Co., San Francisco, Cal.
 Western Sugar Refining Co., San Francisco, Cal.
 Baldwin Locomotive Works, Philadelphia, Pa.
 Newell Universal Mill Co., Manufacturers of National Cane Surodder, New York, N. Y.
 Pacific Oil Transportation Co., San Francisco, Cal.

HART & CO., LTD
 The elite Ice Cream Parlors,
 Chocolates and Confections
 Ice Cream and Water Ices
 Bakery Lunch.

THE FINEST RESORT IN THE CITY

Union Pacific
 Railroad

SUGGESTS
Speed and Comfort

Three trains daily through cars, first and second class to all points. Reduced rates take effect soon. Write early.

S. F. Booth,
 General Agent.

No. 1 Montgomery Street,
 San Francisco.

Travellers Agree
 THAT
The Overland,
 Limited
 IS
Quickest, Finest, Best
 A Train that Supplies
 All Demands
 To St. Louis or Chicago
IN 3 DAYS
 from San Francisco.
 ELECTRIC LIGHTS
 READING LAMPS,
 CLUB CARS—
 ALL GOOD THINGS
Southern Pacific
 Information Bureau
 612 Market Street,
 San Francisco.

OAHU RAILWAY AND LAND CO'S
TIME TABLE
OCTOBER 6, 1904.

OUTWARD.
 For Waialua, Waiakoa, Kahuku and Way Stations—9:15 a. m., 3:20 p. m.
 For Pearl City, Ewa Mill and Way Stations—7:30 a. m., 9:15 a. m., 11:06 a. m., 2:15 p. m., 3:50 p. m., 5:15 p. m., 10:30 p. m., 11:15 p. m.

INWARD.
 Arrive Honolulu from Kahuku, Waiakoa and Waialua—8:35 a. m., 5:21 p. m.
 Arrive Honolulu from Ewa Mill and Pearl City—7:46 a. m., 8:36 a. m., 10:38 a. m., 1:40 p. m., 4:21 p. m., 5:31 p. m., 8:39 p. m.
 Daily.
 Sunday Excepted.
 Sunday only.
 The Haleiwa Limited, a two hour train, leaves Honolulu every Sunday at 8:25 a. m. returning arrives in Honolulu at 10:10 p. m. The Limited stops only at Pearl City and Waialua.

A. P. DENNISON Supt. **P. C. SMITH,** G. P. & T. A.

Bad Blood
 Have confidence in Ayer's Sarsaparilla. It has been curing people in all parts of the world for over 30 years. It is the greatest family medicine in the world. It purifies, strengthens, enriches, builds up.



Mr. George Fountain, of Mr. Torrens, So. America, sends his photograph and this interesting letter:
 "I had a very bad case of eczema. Medical men had told me nothing more could be done. I tried several blood purifiers, but without result. The eruption was very terrible on my body and arms. My friends told me I must try Ayer's Sarsaparilla. To please them, I did so. To tell the truth, I did not have much confidence in it. I had tried so many medicines. To my great surprise, I found that after only one bottle the scales were beginning to disappear. It took just five bottles to make a complete cure. My skin is now perfectly smooth, and I can't say I have any more trouble."

AYER'S Sarsaparilla
 There are many imitations of Sarsaparilla. Be sure you get Ayer's.
 Prepared by Dr. J. C. Ayer Co., Lowell, Mass., U. S. A.

Castle & Cooke, Ltd
Life and Fire Insurance Agents
 AGENTS FOR
New England Mutual Life Insurance Co
 OF BOSTON.
Aetna Fire Insurance Co.,
 OF HARTFORD, CONN.

S. SAIKI,
Bamboo Furniture
 AND
 PICTURE FRAMES.
 Neat and Handsome
 Designs made to order.
 565 Beretania Street, near Punchbowl.
 TELEPHONE BLUE 881.

A Pure, Wholesome tonic has been prescribed by your Doctor. Order a case of Rainier Beer. After the first case it will not be necessary for your Doctor to prescribe.

BAND CONCERT
 Tomorrow afternoon the Sunday band concert will be at the Capital grounds, beginning at 2 o'clock, when the following program will be played:
 PART I.
 "Old Hundred."
 "Grand Procession March" (new).
 Overture—"La Sirena" (new).
 Fantasia—"The Belle" (new).
 Grand Selection—"Tosca" (new).
 "Puccini."
 PART II.
 Vocal—"Il Trovatore" (Verdi).
 Mrs. N. Alapai Messers, Ellis, Nape and Naone.
 Selection—"Musical Review" (Riviere).
 Intermezzo—"Moonlight" (new).
 Finale—"Prince of Pilsen" (by request).
 "Luders."
 "Star Spangled Banner."
 Fine Job Printing Star Office.

HOW TEDDY CAUGHT A WOLF

THE PRESIDENT'S FIRST CAPTURE OF A WOLF ON HIS HUNTING TRIP—DISMOUNTED FROM HIS HORSE AND CAUGHT THE BEAST ALIVE—TEDDY ALSO KILLED A RATTLESNAKE WITH HIS WHIP.

FREDERICK, Ok., April 11.—President Roosevelt has captured his wolf alive—the first on this hunting trip. Yesterday he witnessed four wolves captured, three of which were taken in by the pack of trained dogs and the fourth captured alive by J. R. Abernathy, the famous wolf hunter.

At sight of this performance the President promised to duplicate the feat. None of the party doubted his courage, but when, after a red hot chase today, the President sprang from his horse and leaped upon the struggling wolf, which was beset by the dogs, the crowd cheered him lustily. He captured the wolf alive.

The President says he is enjoying his hunt in the Big Pasture more than any other single event which has before happened in his life, and that he would not miss it for \$10,000. He has decided to remain in the Big Pasture until Saturday evening, thus extending his allotted time two days. His special train will be retained in Fort Worth until Saturday.

One of President Roosevelt's expressed desires has been gratified. He has seen John Abernathy, said to be the champion wolf catcher of the world, in his unique way, kill a coyote and bear it victoriously to the nation's executive. Abernathy's favorite dog, Cannon Ball, led the first big race of the four days' event Monday morning and captured the first wolf in the chase. Abernathy leaped from his horse and with heavily gloved hands seized the prostrate animal's jaw, lifted it in his arms, and smilingly delivered it to the President, who, forty feet away, had dismounted and walked to Abernathy's side.

Up to date twelve wolves have been caught. These are all carefully weighed. The President is more than pleased at the manner in which the people of this community are giving him a "square deal" by remaining away from the pasture. He says he may remain here until Saturday. The President is almost constantly in the lead of the horsemen, as he is furnished the fastest horses in the country.

Governor Ferguson of Oklahoma will arrive here tomorrow and will spend Wednesday night at Camp Roosevelt. It is expected that President Roosevelt and Governor Ferguson will be entertained at a banquet in Frederick Thursday night.

The President ate his first dinner in the reservation at the camp of Waggoner and Burnett Sunday. The party sat in a semi-circle on stools around the end of the chuck wagon encircling the big pot and feasted on beef and beans. The President ate heartily and during the meal related some of his experiences in the cow camps of the West in former years.

While the President was exercising early Sunday morning he encountered a monster rattlesnake coiled up in the tall grass, its rattles oscillating and its poisonous fangs protruding from its mouth. He dismounted, reversed his riding whip, and slapped the reptile on the head with the heavy butt end. It keeled over and died, and the President severed the rattles and took them back to camp as a memento of the hunt.

Arrangements have been completed for the banquet to be given tomorrow night, in which the Presidential party, Governor Ferguson, and the Hon. Dennis Flynn will participate.

A Fort Hill officer today said that arrangements were being made for the reception of the President at that post, but he was not certain that the President will go.

ACCIDENT TO THE MINNESOTA

PORT TOWNSEND, May 2.—(Special)—At 11 o'clock tonight the big steamship Minnesota dropped anchor in this harbor on a line between Points Wilson and Marrowstone and sent Second Officer Duffy ashore to communicate with the vessel's agents in Seattle.

It was learned from him that at 5:30 o'clock this afternoon while off East Clallam the Minnesota's starboard engine was damaged by the breaking of the high pressure piston. Out of abundant caution it was decided to return for repairs and the big steamer came into this port.

Pilot Brotherton boarded the vessel immediately upon her arrival here and is awaiting orders from the agents. The Minnesota has come up into the harbor. It is thought by the officers of the vessel that repairs may be effected tomorrow without the necessity of returning to Seattle.

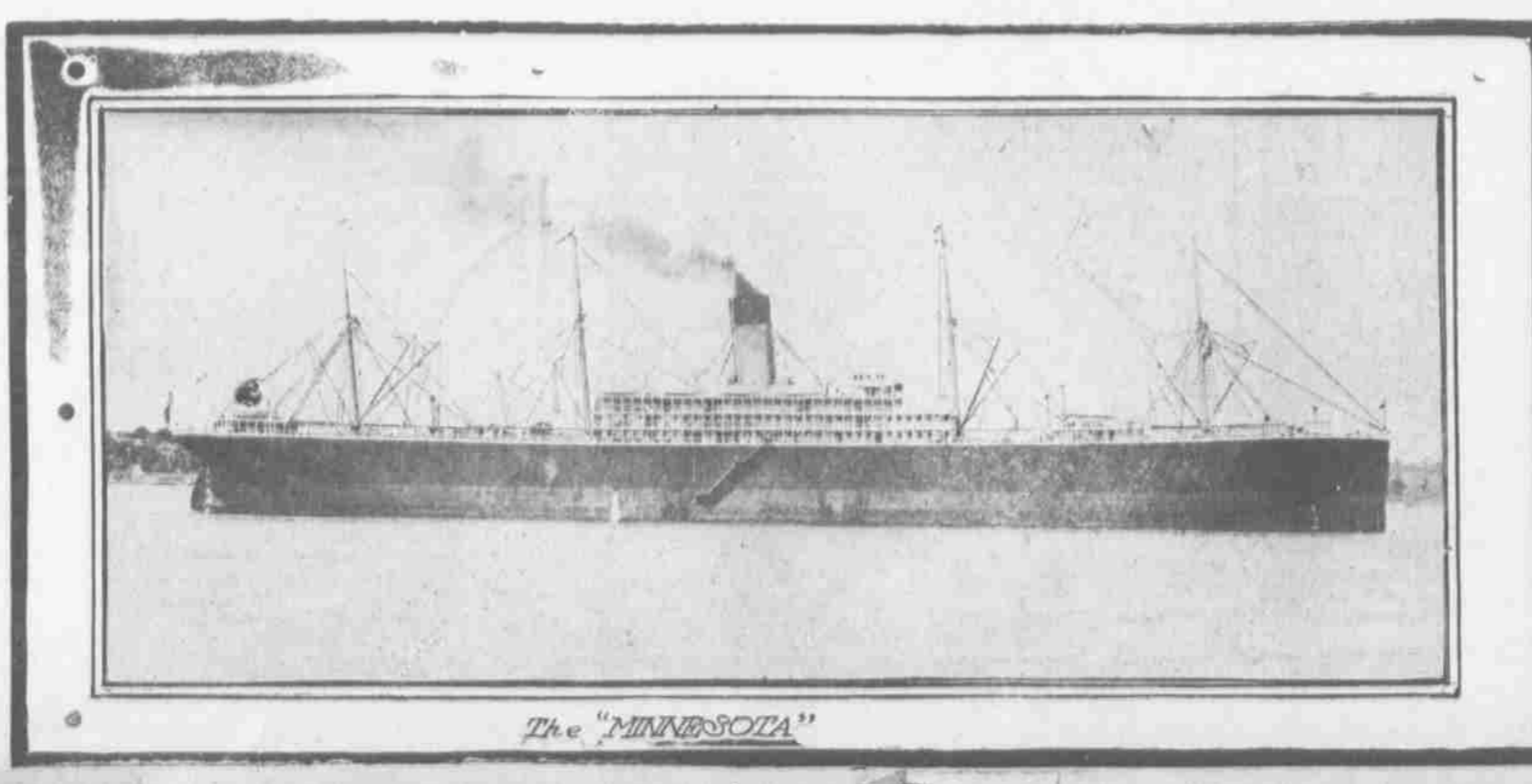
Chief Engineer Lacey has telegraphed that he will arrive on the first boat this morning to examine the vessel.

It was stated at the office of the Great Northern, last night, that in order to protect the insurance it would be necessary for the insurance adjuster and the marine inspectors to examine the Minnesota before proceeding. This formality, it was thought, would delay her departure to a greater extent than the accident to her machinery.

SEATTLE, May 3.—When the steamship Minnesota drew away from the docks at Smith cove yesterday morning she represented a total valuation of \$8,500,000. Of this amount, \$4,000,000 was represented in the ship, and the balance by the cargo, the estimate not including the personal valuables and money of the passengers or crew.

In ship measurement the Minnesota carries 28,000 tons, which equals 23,500 tons dead weight, and this amount is 500 tons more than her estimated capacity.

Despite the fact that she was drawing 36 1-2 feet of water aft and 36 forward, the Minnesota moved away from the dock without the slightest difficulty, she commencing to develop movement at the second revolution of her propellers.



GRAND REDUCTION SALE!
 FOR THREE WEEKS ONLY
 FROM SATURDAY MAY, 27

HATS, TIES, SHIRTS, SOX, AND OUR ENTIRE STOCK WILL BE SOLD AT THE LOWEST POSSIBLE PRICES.

K. ISOSHIMA
OUR OWN LINE
 San Francisco to Chicago
 (WITHOUT CHANGE).
 STANDARD AND TOURIST SLEEPERS DAILY



Stopping en route at Los Angeles, also "THE PETRIFIED FORESTS" and the "GRAND CANYON OF ARIZONA."

HONOLULU PEOPLE TAKE THE SANTA FE ROUTE DURING THE COLD WINTER MONTHS. AN IDEAL TRIP ALONG THE OILED ROADS BEDS ON THE CALIFORNIA LIMITED. TWO TRAINS DAILY.

Passenger Agent, W. G. Irwin & Co., Office

IN THE CITY'S CHURCHES

Notices for this column should be sent in not later than 9 o'clock Saturday morning.

GERMAN LUTHERAN CHURCH.
 Deutsche Lutherische Kirche Beretania Ave. nahe der Punchbowl street. Pastor: Willibald Felmy, New Era, Fort Street. Schul und Kirch Telephone White 2691. 10 Uhr Sonntagsschule: Gottesdienst 11 Uhr Morgens, und 7:30 Abends.
 Sunday services at 11 a. m. and 7:30 p. m.

CENTRAL UNION CHURCH.
 There will be a union service of the churches engaged in the Evangelistic movement at Central Union church Sunday morning at eleven o'clock. The several pastors will conduct the opening service. Fred Butler will sing "The Voice of God in Creation." Mr. Hills will have charge of the chorus music. Rev. Dr. Ostrom will give the address.
 In the afternoon at three o'clock will be a union meeting of all the Bible Schools of the city to which all both old and young are invited. Mr. Butler will sing, and Dr. Ostrom will speak.
 In the evening there will be a Gospel mass meeting at 7:30 at which the members of the Grand Army Post will attend in a body if being Decoration Day Sunday.

BIDS FOR FURNITURE.
 Bids as follows have been opened at the department of Public Works: Bids for school furniture, Hanalei, Kauai: A. B. Arleigh & Co., \$149, d d l ery in thirty days; Wall, Nichols Co., \$176, delivery in forty days. Bids for school furniture, Waiakoa, Oahu: A. B. Arleigh & Co., \$974, delivery in sixty days; Wall, Nichols Co., \$1030, delivery in thirty days. Bids for school furniture, Paunene: A. B. Arleigh & Co., \$620, delivery in thirty days; Wall, Nichols Co., \$667, delivery in sixty days.
 Want ads in the Star bring quick returns. Three lines three times for 25 cents.

LAND COURT APPEAL.
 The first appeal to be taken from a decision of the Court of Land Registration has been entered. It is against the decree of a title to Emili Kiemme for land at Alapai and Hotel streets.

When your Physician orders you to take a tonic he expects you to select something pure and wholesome. The United States Government reports endorse the purity and wholesomeness of Rainier Beer.

C. BREWER & CO., LIMITED

QUEEN STREET, HONOLULU, H. T.
 AGENTS FOR
 Hawaiian Agricultural Company, Onomes Sugar Company, Honomu Sugar Company, Oahu Sugar Company, Oahu Sugar Plantation Company, Haleakala Ranch Company, Kapapala Ranch.
 Planters' Line Shipping Company, Charles Brewer & Co's Line of Boston Packets.
LIST OF OFFICERS.
 Charles M. Cooke, President
 Geo. H. Robertson, V-Pres. & Mgr.
 E. Faxon Bishop, Treas. & Secy.
 F. W. Macfarlane, Auditor
 P. C. Jones, Director
 C. H. Cooke, Director
 J. R. Galt, Director
 All of the above named constitute the Board of Directors.

NOTICE.

NOTICE TO BONDHOLDERS EWA PLANTATION COMPANY.
 In accordance with the terms under which its bonds were issued, the Ewa Plantation Co. will pay, with accrued interest, on July 1st, 1905, One Hundred Thousand Dollars (\$100,000.00) of its bonds, this completing the redemption of the entire issue of \$500,000 issued under date of January 1st, 1900. The numbers of the bonds to be paid are as follows:

7	114	187	274	401
9	120	188	275	403
18	123	193	286	404
22	124	194	291	410
24	132	199	292	473
29	137	204	295	421
32	143	212	304	424
33	145	213	307	426
45	149	219	339	432
46	151	223	340	441
47	155	240	344	445
59	157	242	352	451
74	168	254	354	454
82	169	257	358	455
93	174	258	359	463
96	176	259	360	469
97	179	264	361	478
100	183	266	363	479
110	184	270	373	492
113	185	271	383	494

Notice is hereby given to the holders of these bonds to present the same for payment at the office of the Treasurer of the Ewa Plantation Company in Honolulu on July 1st, 1905, and that interest on same will cease on and after that date.
 W. A. BOWEN,
 Treasurer Ewa Plantation Company,
 Honolulu, Hawaii, May 20th, 1905.

ORPHEUM THEATRE

J. G. CASHEN, Manager.

"Flagship of the Pacific."

THE ELLEFORD CO.

PRESENTING AN ENTIRELY NEW REPERTOIRE OF HIGH-CLASS PRODUCTIONS.

The strongest company ever brought to Honolulu by this popular manager.

FRIDAY AND SATURDAY, MAY 28TH AND 29TH.

New York Day by Day

SATURDAY MATINEE.

"Little Red Riding Hood"

MONDAY AND TUESDAY, MAY 29TH AND 30TH.

"Tribby"

Matinees, 25c. for reserved seats. Prices: 75c, 50c, and 25c.

GO TO THE

PANTHEON.

FOR YOUR BOTTLED GOODS.

Straight Stuff at Bedrock Prices.

M. OHTA,

Contractor and Builder House Painter

Kewalo, Sheridan Street, near King, Honolulu, H. I. Telephone White 691.

ALEXANDER & BALDWIN LTD.

OFFICERS:

H. P. Baldwin, President; J. P. Cooke, First Vice-President; W. M. Alexander, Second Vice-President; L. T. Peck, Third Vice-President; J. Waterhouse, Treasurer; G. M. Rolph, Secretary; W. O. Smith, Auditor.

Sugar Factors and Commission Merchants

AGENTS FOR

Hawaiian Commercial & Sugar Company, Haiku Sugar Company, Paia Plantation, Maui Agricultural Company, Kihai Plantation Company, Hawaiian Sugar Company, Kahuku Plantation Company, Kahului Railroad Company, Haleakala Ranch Company.

THE BLOOM AND BLOSSOM

of a house is its yearly coat of paint. There is the same satisfaction to be found in a freshly painted house as there is in a beautiful flower. We will help you paint your house by supplying you with the wherewithal to go to work. If you prefer to mix your own paint we have on hand the finest stock of lead, zinc, oil, turpentine, colors, varnish, brushes of any house in town. Should you however wish to use ready-made paints, you cannot do better than to place an order with us for WHITTIER FULLER & CO'S PURE PREPARED PAINTS than which it is impossible to find better.

LEWERS & COOKE, LTD., 177 S. KING STREET

BEAVER LUNCH ROOM, Fort Street, Opposite Wilder & Co. H. J. NOLTE, PROP'.

First-Class Lunches served with tea, coffee, soda water, ginger ale or milk. Smokers Requisites a Specialty.

BATH

THE

Plumber

135 S. King Street Telephone Main 41

K. UYEDA

102 1/2 Nuanu Street, Honolulu, T. H. Between King and Hotel Street. Straw Hat Manufacture. Any Style of Straw Hat made to order. Panama and Felt Hat Cleaned.

WALTHAM WATCHES. STEM WINDING, LEVER. WALTHAM WATCHES ARE THE MOST DURABLE AND ACCURATE POCKET TIMEPIECES IT IS POSSIBLE TO CONSTRUCT. TWELVE MILLION IN USE. ALL GUARANTEED BY AMERICAN WALTHAM WATCH COMPANY, WALTHAM, MASS., U. S. A.

FOREIGN NEWS BY CABLE

BATTLE MAY BE ON.

TOKIO, May 27.—It is rumored here that the fleets of Togo and Rojestvonsky are engaged in the Korean Straits.

VLADIVOSTOK SQUADRON.

TSINGTAU, May 27.—A private telegram states that the Vladivostok squadron has left that port and moved in a southerly course.

RUSSIA SNUBS CHINA.

SHANGHAI, May 27.—China ordered the Russian vessels at Woosung to leave by the 24th but the order was ignored.

STARVATION IN SIBERIA.

ST. PETERSBURG, May 27.—The people of Eastern Siberia are starving. The fish supply has been exhausted and dogs are being devoured.

STRENGTHENING FRENCH FLEET.

PARIS, May 27.—The Minister of Marine announces that he will send a second division of twelve warships to French Indo-China in August.

JEWES AND CHRISTIANS HOSTILE.

ST. PETERSBURG, May 27.—The tension between Jews and Christians at Volhynia has increased and both sides are arming.

CAMBON AND CHOATE.

LONDON, May 27.—Ambassador Cambon dined last evening with Mr. Choate.

THE OCEAN RACE.

NEW YORK, May 27.—The yachts Ailsa and Hamburg were sighted on the 23d, 1107 miles east.

OSCAR RESUMES THE CROWN.

STOCKHOLM, May 27.—King Oscar has resumed the government.

HAY GOES TO PARIS.

BADNAUEHEIM, May 27.—Secretary Hay has gone to Paris.

Washington city hasn't even the excitement of a horse race now to keep it from going asleep.—Pittsburg Gazette.

THE BUSTLE.

The bustle is said to be coming into style. The Wisconsin legislature had so little encouragement in its attack on corsets that it will probably not try to interfere.

ELLEFORDS TO PRESENT TRILBY

DR. MAURIER'S CELEBRATED CREATION WILL BE GIVEN AT THE ORPHEUM MONDAY.

Commencing next Monday evening the Elleford management will present George Du Maurier's celebrated play "Tribby." Mr. Maurier has written his tale with such originality, unconventionality and eloquence, such rollicking humor and tender pathos, and delightful play of every lively fancy, all running so briskly in exquisite English and with such vivid dramatic picturing, that it is only comparable to the freshness and beauty of a spring morning at the end of a drizzling winter. It is thoroughly unique story. The play will be mounted in fine style and there will be the wedding of Tribby and Little Bibbe, the death of Sweeney and Tribby.

All the members of the company will be seen including Frank Wynnan, the manager of the company.

Pietro Sasso will be the Scrogall, Miss Due, Tribby, Hernandez as Zoro, a part in which he made a great hit with the W. A. Brady company in New York. Edles will have the role of Tuffy and Wynnan appears as Sandy, Dault will be the Little Bibbe and Mallou as Geckle.

PLACES BLAME ON THE WOMAN

CANADIAN MINISTER, WHO IS ALSO A NOVELIST, TELLS OF THE EVILS OF SOCIETY.

WINNIPEG, May 27.—Ralph Connor, the novelist, whose real name is Rev. C. W. Gordon, last night denounced in scathing terms local society at St. Stephen's Presbyterian Church. His attack follows closely on the heels of the pulp exposure of social evils through the Dominion. The speaker said in part:

"The blame must be laid on the married women of society. It is said the young men are to blame who are found dangling after married women. No man would dare by any act to suggest what is improper to a married woman unless she gives the invitation. In time to come some will differentiate among those who constitute society and refuse to associate with those who pander to lustfulness of vice. If I had stronger words I would attack them deliberately to the eyes of the society women. They are responsible and not our slums, saloons and brothels. Those so-called respectable ladies are responsible for the decay of virtue in our fair city."

NAONE CASE.

The Naone murder trial will be continued on Monday, with more of the prosecution's rebuttal witnesses. It is expected that the case will be finished next week, though the rebuttal testimony is expected to take two or three days more.

For the midnight lunch. A sandwich just right, not too thick and not too thin, and a sparkling glass of Rainier Beer. It is a delight you can't afford to miss.

Want ads in the Star bring quick results. Three lines three times for 25 cents.

CONFERENCE IS NOW AT AN END

DR. OSTROM FINISHES PREDICABLY AT THE LAST MEETING WHICH WAS HELD LAST NIGHT.

The Central Union Church was crowded again last night on the occasion of the last meeting of the Bible Conference under the leadership of Dr. Ostrom. Dr. Kincaid drew attention to the collections which were to be taken up for the remuneration of Dr. Ostrom and asked for a generous response. The pastor stated that as many could not pay before the beginning of the month, P. C. Jones had offered to pay face value on all written pledges made by church people.

Dr. Ostrom spoke on the great historic event of the crucifixion. He said that he considered the death of Christ was the most important fact in the world's history. Every great reformer has received the inspiration for his work out of this great event. Every church, naming the name of Christ, pays last tribute to this event. All civilization centers around the great historical event of the Crucifixion. In the presence of a great array of facts Dr. Ostrom said he must conclude that the death of Jesus Christ was not altogether a hideous murder, but one of the greatest sacrifices the world has ever known.

There was an old folks meeting at the Central Union yesterday afternoon which was well attended. Dr. Ostrom spoke for over an hour.

A GRUESOME SUBJECT.

The gruesome and painful question raised by the Lancelot of the disposal of the vast number of dead bodies left on the field at Mukden is one of direct importance to Europeans. At present the bodies are lying frozen, but the putrefaction which will ensue when the sun begins to play on them is horrible to anticipate. After the much less disastrous affair of Waterloo, great pyres were kindled and kept burning for days; and Talleyrand, travelling across Europe to rejoin Louis XVIII, deviated from his course in order to avoid the sight of the peasants, who continually stirred the burning mass with long forks, their faces covered with handkerchiefs soaked in vinegar. One of the plagues of the middle ages has been attributed to infection spread at immense distances on all sides by the decomposing heaps of bodies on a battlefield. The Japanese are a scientific race, and can be trusted to do what seems best in their own interests, with the means and time at their disposal, to provide a remedy, but the Foreign offices of Europe might well take steps to supplement their efforts. Otherwise we may suffer, months hence, from a serious epidemic.

CHILDREN WHEN TEETHING.

This is the most dangerous age in the life of a child. At this time they have more or less diarrhoea, which weakens the system and renders the child more susceptible to disease. Any unusual looseness of the bowels should be promptly controlled, which can be done by giving Chamberlain's Colic, Cholera and Diarrhoea Remedy, with an occasional dose of castor oil to cleanse the system. For sale by all dealers, Benson, Smith & Co., agents for Hawaii.

Fine Job Printing, Star Office.

This is what the United States Health Bulletin meant when they recommended Rainier Beer for purity and wholesomeness.

Star Want Ads pay 25 cent.

THEY GET QUICK STRENGTH AND HEALTH

Paine's Celery Compound MEN AND WOMEN WEAKENED-BLEACHED-INDIGESTED QUICKLY BY THE CELEBRATED NERVE VITALIZER AND TONIC.



MISS FLORENCE WORDEN, Paine's Celery Compound Restored Her So Quickly that Her Doctor was Astonished.

Tired, weak-nerved, thin-blooded, unhappy men and women get quick, sure, hearty health from this celebrated Nerve Vitalizer and Tonic. It drives away lassitude, gives courage and strength. There is a rich increase in blood supply, and soon the whole system thrills with hearty health. "Paine's Celery Compound has been worth a thousand dollars to me," writes Miss Florence Worden, niece of Admiral Worden. "Strain of professional duties left me a nervous wreck. I went home and for weeks was nursed by my mother as an absolute invalid. "My digestion was very weak, and I suffered agonies from neuralgia. "A girl friend sent me a bottle of Paine's Celery Compound, with a cheerful, hopeful letter, telling what it had done for her. I took four bottles, and by the end of summer I was well-absolutely well. "Not since I was a child have I felt such buoyant HEALTH AND SPIRITS. Our doctor was astonished."—(Miss) Florence Worden, 314 West Forty-seventh street, New York.

A. C. Davis. Harry Rivers.

Horseshoe Saloon

William Patterson, Manager. BOWLING ALLEY NOW OPEN. Hotel Street, Honolulu, Hawaii.

SPECIAL MEETING.

NOTICE OF SPECIAL MEETING OF STOCKHOLDERS, AND OF CLOSING OF STOCK TRANSFER BOOKS.

WILDER'S STEAMSHIP COMPANY.

Notice is hereby given that a special meeting of the Stockholders of Wilder's Steamship Company has been called by the President and that the same will be held at the office of the Company in Honolulu, Oahu, on Monday, the twenty-ninth day of May, 1903, at the hour of ten o'clock a. m. of said day, for the purpose of considering and voting upon a proposal for the sale of all the business and property of Wilder's Steamship Company, and the dissolution of said Company, according to the terms proposed for such sale and dissolution as laid before the Stockholders of the Company by circular letter of the Secretary dated March 24th, 1903, and for the transaction of such other business as may properly come before said meeting.

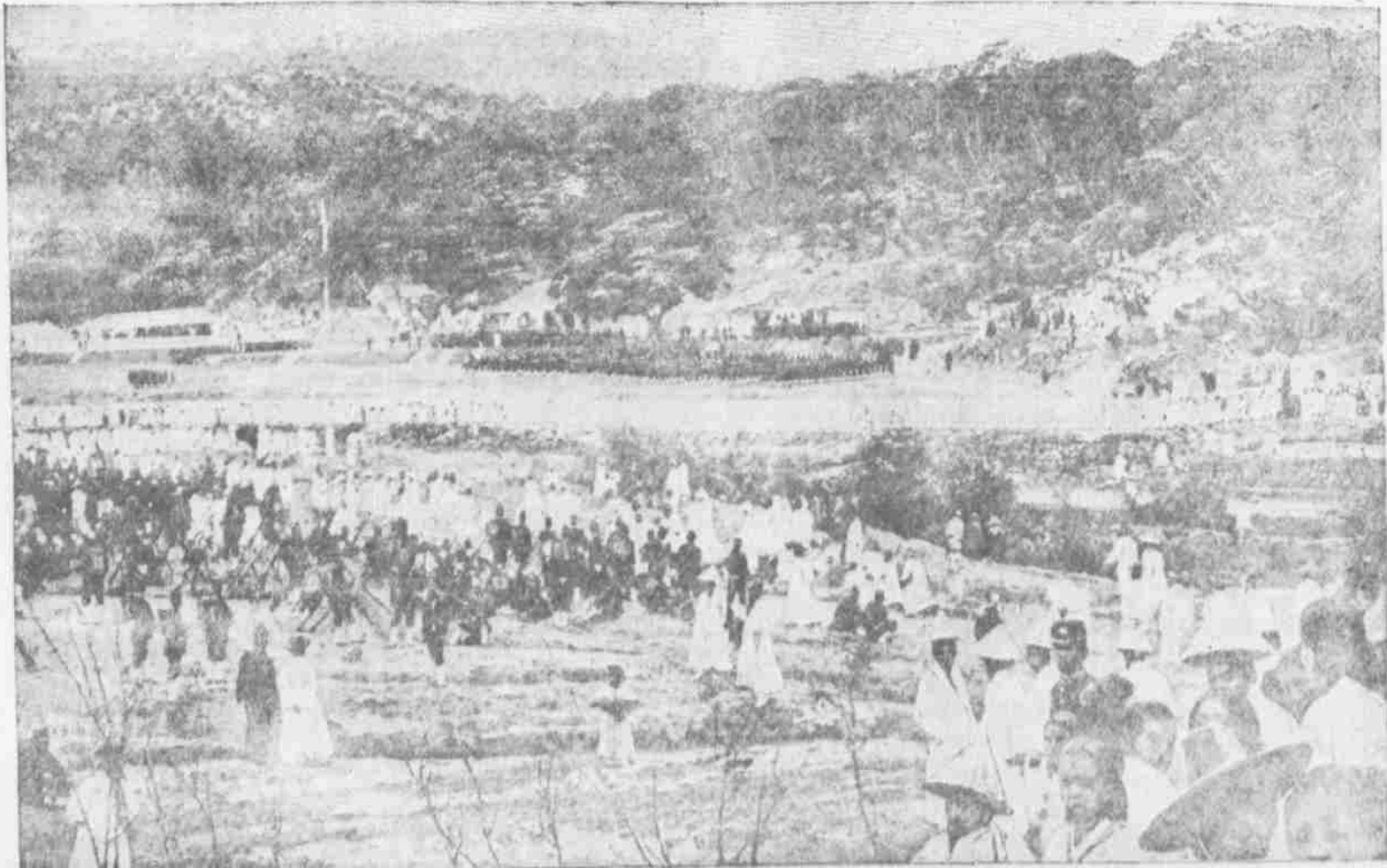
Notice is also hereby given that the stock transfer books of Wilder's Steamship Company will be closed from and including the 26th day of May, 1903, to and including the 31st day of May, 1903.

By order of the President: Dated, Honolulu, T. H., May 19th, 1903. S. B. ROSE, Secretary.

HOT CLAM JUICE and BEER TEA, also OYSTER COCKTAILS always on hand at FAVORITE SALOON

Really refreshing is Rainier Beer. In all the world you will find no better remedy for that "spring feeling."

Grand Review Of Japanese Troops



SOUVENIR LEATHER POSTAL

Enamelled Hawaiian Jewelry, Old Style Locks, Home made Mangan Chains.

WOMAN'S EXCHANGE



HOT WEATHER with all its attending discomforts is once more holding the center of the stage. Pacheco's Dandruff Killer will keep your head cool, free from dandruff and stop that awful itching.

Crystal Springs Butter

has become the most popular butter in Honolulu and deservedly so for there isn't a finer or better flavored butter in the market.

METROPOLITAN MEAT CO. Limited Telephone Main 45

NEW ADVERTISEMENTS

James F. Morgan, Auctioneer and Broker, 517-517 Kauhuanu St. Tel. Main 72. P. O. Box 594.

NEWS IN A NUTSHELL

Paragraphs That Give Condensed News of the Day.

WEATHER REPORT.

U. S. Weather Bureau Office, Young Building.

Temperatures: 8 a. m. 68; 8 a. m. 75; 10 a. m. 72 (noon 75) morning minimum 66.

Barometer 8 a. m. 29.97; absolute humidity 8 a. m. 6.66 grains per cubic foot; relative humidity 8 a. m. 69 per cent; dew point 8 a. m. 65.

Wind velocity 8 a. m. 2, northeast; 8 a. m. 3, west; 10 a. m. 6, southwest; noon, 11 northeast.

Rainfall during 24 hours ended 8 a. m. .57 inches.

Total wind movement during 24 hours ended at noon 119 miles.

ALEX. McC. ASHLEY,

Section Director, U. S. Weather Bureau

The steamer Kinau was sighted at 8:29 o'clock this morning 25 miles east. Beets: May 26, 12 shillings; last previous quotation, May 24, 12 shillings, 2 pence.

Wing Wo Tai & Co. have received a large assortment of embroidered grass linen shirt waists.

Yee Chan will hold an immense reduction sale commencing Monday morning. This is their annual sale.

Sachs' calls attention to ladies' khaki divided riding skirts of which there are a few samples which must be sold.

Sugar: May 26, 4.3675 cents a pound or \$7.35 a ton. The last previous quotation was May 24, 4.38 cents a pound.

A new supply of fresh vegetable and flower seeds in 5-ct. packages has been received ex Sierra by The Hollister Drug Co.

Rev. Dr. Doremus Scudder will preach the sermon to the graduating class at the coming commencement at Oahu College.

James L. Logan has resigned as freight clerk of the steamer Mauna Loa and will leave for the mainland in the barkentine Imragard about Wednesday.

At the Y. M. C. A. anniversary, Monday evening, Dr. Ostrom will deliver the address. Mr. Butler will sing and there will be instrumental music.

Mrs. J. C. Cohen the wife of the successful manager Joe Cohen will sing "Ben Bolt" during the performance of "Tribby" at the Orpheum on Monday.

The National Guard will turn out as an escort to the G. A. R. procession on Memorial Day. Lieut.-Col. Zeigler will command and Co. F will salute for the dead.

There will be a meeting of the Republican County Central Committee for the county of Oahu at Republican headquarters, in Fort Street, at 7:30 this evening.

Four yachts, Gladys, La Paloma, the Spray and the Hawaii will start in the annual race around the island of Oahu. The date of sailing has not yet been fixed definitely.

The hospital corps of the N. G. H. will go into camp at Makiki near the head of Keesumoku street, this afternoon. An exhibition drill in first aid to the wounded will be given at 2 o'clock.

New Process gas ranges, the best made, are being displayed by Dimond & Co. This popular house is the principal gas range depot here. Call and have explained the many advantages of the New Process.

The 92 Company, Coast Artillery, at Camp McKinley, leaves on June 15, for station at Fort Flager, Wash. The 28th company goes to Fort Rosecrans, Cal. Companies L and M, 19th infantry, come to Honolulu the first week in July.

The Annual Meeting of the Manoa Golf Club will be held next Friday evening at 8 o'clock in the makai pavilion of the Alexander Young hotel. Officers are to be elected, reports read and a plan proposed as to the organizing of a country club.

The Chinese Athletic Club is a new organization with the following officers: John Lo, manager; Philip Wong president; H. T. Chan, vice-president; K. F. Yeh, secretary; En Fee, treasurer; Kim Fook, auditor; C. F. En Sue is temporary captain of baseball team.

SUGAR ON HAWAII.

Admiral Beckley reports the following sugar on hand at various Hawaii plantations, ready for shipment: Oahu, 13,800 bags; Waialae, 11,000 bags; Hawaii Mill, 72,000 bags; Waialae, 11,000 bags; Onomoa, 23,000 bags; Pepeekeo, 14,500 bags; Honouliuli, 15,700 bags; Hualalai, 11,500 bags; Laupahoehoe, 1,000 bags; Ooakala, 8,000 bags; Hekalua, 4,500 bags; Hamakua, 650 bags; Paau-hau, 6,500 bags; Honokaa, 13,200 bags; Kukuhaele, 2,700 bags; Honuapo, 4400 bags.

DELICIOUS WHITE GRAPE JUICE. Grape-Catel is a most delicious white grape juice which is being served at the Hobron Drug Co's soda fountain. It is very wholesome and possesses the rich grape flavor.

Want ads in the Star bring quick results. Three lines three times for 25 cents.

CHOICE ALGARROBA

FIRE WOOD SAWED AND SPLIT OR IN 4 FEET LENGTHS

DELIVERED TO ANY PART OF THE CITY. LEAVE ORDERS WITH

W. W. DIMOND & CO. Agents for East Niu Ranch.

GOVERNOR KNOCKS OUT MANY ITEMS

(Continued from page 5.)

square feet of land used for road, Honokaa, Hamakua, \$25.

John Lycurgus, claim 1901, \$50.

To pay the American-Hawaiian Engineering and Construction Company, Limited, etc., \$2,000.

Road damages, Kona, Hawaii, claim Kaupumanoa, \$100. Claim Kamahala, \$75.

Hilo Fire Department: To Hilo Electric Light Co., \$101.50; to Hilo Telephone Co., \$26; to Richard & Schenck, \$32.50; to E. Fahr, \$18.

Claim, Tollersten, for yacht "Volante" \$250.

Dill, Widdler's S. S. Co., \$24.25.

A. Lindsay, treasurer Hilo Shippers' Wharf Committee, for sanitary protection of the Port of Hilo, \$1,047.70.

To reimburse Ridgway & Ridgway for services rendered Fourth Circuit, \$50.

To reimburse Ah Nam, \$25.

W. J. Yates, expenses as witness, Ter. vs. E. M. Jones, \$19.

D. K. Kealahoupaolo, expenses as witness, Ter. vs. E. M. Jones, \$19.

Solomon Nahupu, expenses as witness, Ter. vs. E. M. Jones, \$19.

David L. Withington, bill, Dec. 30, 1903, \$3.95.

John de Mello, bill, Apr., 1903, \$12.

John Gaspar, bill, April, 1903, \$24.50.

P. L. Weaver, traveling expenses, \$327.

Lane moved that the veto be sustained on all the items, and it carried, Achi and Brown voting to override.

The order of the day came on the consideration of the majority and minority reports on the Judiciary Committee on the governors' appointment of election inspectors. Bishop moved the adoption of the majority report, tabling the appointments and it carried.

President Isenberg gave information that the appropriation bills would be ready by Monday afternoon, and the Senate adjourned until 3 p. m. on that day.

SHIPPING INTELLIGENCE

ARRIVING.

Saturday, May 27. Steer, Kinau, Freeman, from Hilo and way ports, at 10:20 a. m.

PASSENGERS.

Arriving.

Per steer, Kinau, May 27, from Hilo and way ports. J. F. Hagena, K. Iwakami, J. S. McCandless, J. A. M. Gao-ris, C. C. Eakin, Dr. O. E. Wall, J. E. Clay, L. A. Thurston, A. S. Castro, J. E. Rocha, Mrs. M. Metcalfe, A. H. Jackson, Capt. C. H. Macdon, James W. Robertson, C. P. Benton, T. Aoki, S. Matsuda, Mrs. A. G. Silva, Albert Lyman, Mrs. K. Matsumura and 2 children, P. Peck and wife, Miss E. Peck, George Lycurgus, D. Lycurgus, Mrs. J. G. Ward, W. S. May, Mrs. C. O. Berger, Mrs. Epa, Mrs. J. O. Young, M. Hilo, Dr. J. H. Raymond, E. P. Dinert, Mrs. A. Pail, Albert Catuk, Mrs. Kekalohe, Miss A. Kahalelan, H. G. Plummer, High Sheriff Henry, Capt. Johnson, Lieut. Dougherty, Lieut. C. Costa, S. Mori, A. Yamaguchi.

WOULD NOT SHAVE RUSSIAN WHISKERS

(Continued from page one)

The officers felt satisfied that affairs were sufficiently quiet to permit of the withdrawal of the majority of the Honolulu police and militia. The Kinau arrived at Lahaina about 3:30 o'clock this morning and started for Honolulu shortly after 5 o'clock.

The men had a rough time of it for a while curing their stay in and about Lahaina and they showed the effects of the trip. The force was dressed in khaki uniform with slouch hats and blue shirts. High Sheriff Henry wore his uniform as chief of the Territorial police.

"Talk about those Japs not knowing I was a Russian," exclaimed Captain Sam Johnson this morning "why they had my picture pasted up in at least two barber shops. They got those pictures where I was one of the aides to Prince Fushimi. I went into a barber shop and the Jap shaved one half of my face and then refused to shave the other half when he found out who I was. But I made him shave me. I threatened all sorts of things if he did not do it."

Captain Sam Johnson and Lieutenant Dougherty marched their forces up the street to the armory while the police went to the police station. The patrol wagon was sent after the luggage of the police.

There were happily no casualties among the militia or police. The nearest approach to any serious occurrence was when Guy Livingston of the signal corps mounted a bronco to get a better elevation to wig-wag the Primo high sign and the horse collided with the machine gun braining Guy's heel.

BIGGEST SUGAR CARGO OF THE FLEET

WM. P. FRYE LEFT WITH WHAT WILL PROBABLY PROVE TO BE LARGEST CARGO OF FLEET.

The ship Wm. P. Frye left yesterday afternoon for Delaware Breakwater with what will probably be the largest cargo of sugar to be carried in a sailing vessel this season. She had 92,

James F. Morgan,

AUCTIONEER AND BROKER.

517-517 Kauhuanu St. Tel. Main 72. P. O. Box 594.

AUCTION SALE

ON THURSDAY, JUNE 1,

12 o'clock noon, at my salesroom, 527 Kauhuanu street, Honolulu.

Lease of

Bishop Estate Lands

situate North Kona, Hawaii, and being as follows:

The makai portions of the lands of Kahaluu, Keaouhou 1, and Keaouhou 2, North Kona, Hawaii, lying below the Maoka Government Road, containing an area of 2800 acres, more or less, of coffee, fruit and grazing land. Also the Fishing Rights, appurtenant to the said lands, until such time as the same may be condemned or acquired by the government. Proposee lease excepts and reserves all kuleanas not owned by the Lessors, also reserving such rights of way that may be necessary from the Maoka Government road to the sea. It includes an area of about 80 acres of fine land formerly leased to the Hawaii Tea & Coffee Co., Ltd.

Term of Lease, 21 years from 1st day of July, 1905.

Upset price for the annual rental, \$500.00 net above Taxes and a sum equal to one-half years' rental to be deposited upon the day of sale.

Conditions as usual in Bishop Estate leases, and to include a covenant on the part of the Lessee, to continue as sub-tenants on the said lands, should they so desire, all bonafide residents now holding, occupying or cultivating lots. The Lessee shall have the right to limit the size of such sub-leases to a maximum area of two (2) acres, and shall not charge a rate in excess of \$5.00 per annum per acre.

For further particulars apply to the Superintendent of the Bishop Estate, Frank S. Dodge, No. 77 Merchant street, Honolulu; Thos. C. White, Local Agent of the Estate, Kainaliu, Kona, Hawaii, or

JAMES F. MORGAN, AUCTIONEER.

673 bags, equal to 5,695 tons and 565 pounds of sugar.

The next sailing ship to load sugar for the Breakwater will probably be the Arthur Sewall, now out 24 days from Shanghai bound in ballast for this port.

THE FATE OF BERGER'S BAND

GOVERNOR'S ORDERS FOR THE REST OF ITS EXISTENCE—HONOLULU MAY SUPPORT IT.

The appropriation for the government band will expire on June 30, the legislature having failed to make another one, and there is considerable speculation as to what will become of the organization.

By order of the Governor the band concerts on Sunday will alternate hereafter between the Capitol grounds and Makee Island. The Sunday band concert tomorrow will be at the Capitol grounds, commencing as usual at 3 o'clock. This afternoon the band will play at the baseball games.

The plan which many of the legislators who knocked out the appropriation favor is to have Honolulu put up for the band. The county of Oahu, if it ever comes into existence, is expected to pay for it. Otherwise a movement may be started to have citizens of Honolulu raise the necessary money, the Rapid Transit and local hotels putting up a share in return for music which benefits them.

HACKFELD VS. DAVIES.

An exciting game of baseball will be played on the Makiki Grounds, Tuesday May 30th, at 1:30 o'clock between nines made up from the employees of Theo. H. Davies & Co., and H. Hackfeld & Co.

Rivalry exists between these teams and the game on Tuesday will be very interesting, as when these two nines met last the Davies' aggregation came out the victors and the Hackfeld men intend to even matters. This will afford an opportunity to the members of the Elleford Co., to witness an exciting game of baseball as they are not able to attend the regular league games on Saturday.

Do you lag through a task instead of attacking it with all the steam on and pushing it through briskly?

Do you fritter away a single hour of the day that might be made useful in benefiting your health, improving your mind or helping your business?

Do you squander in selfish idleness moments that you could use in bestowing comforts upon others?

Rubber Tires

Have you about used up that old set of tires on your carriage? Are you not running on the channels and spoiling them? If so won't it pay you to see us about putting on a new set?

We will send to your house for the wheels and return them in a short time with the new tires nicely put on. It will not cost you a great deal and we guarantee the rubber and the work we do.

E. O. HALL & SON, LTD

CONSOLATION

See the maidens in the sea— Just as happy as can be; In a little while, ah me, Frightened damozels we'll see, Who will scream most frightful, For to toss so pink and wee, Cruel crabs attached will be— Here endeth the maiden's glee.

Singing sea I may not hear, Though I wish that I were there; I must duty's burden bear In the city grim and drear; One thing only brings me cheer, When my thoughts to seaside veer, But the same is very dear: There's no crabs in PRIMO BEER.

PRIMO LAGER

Invigorates the tired system like a dip in the briny.



IT DOESN'T WARP

Old Sol won't warp the paint we put on your house — it's the best paint made, it stands up against all difficulties. Talk to us about painting your property.

Stanley Stephenson Painter and Decorator Phone 429 107 KING STREET SIGNS OF SUCCESS—S. S. SIGNS



Fresh Bottled Bock Beer

\$2.00 PER DOZEN QUARTS.

CAMARA & CO., LIQUOR DEALERS.

MERCHANT AND ALAKEA STREETS. TEL. MAIN 492.

New Process GAS... RANGES



THE RANGE OF UNIVERSAL FAVOR, Most economical in use of gas. Satisfaction guaranteed. SOLD ON EASY TERMS.

W. W. DIMOND & CO., LTD.

DISTRIBUTORS FOR HAWAII. 53-55-57 KING STREET.

NEW Tennis Goods

FOR THE

Coming Season

JUST RECEIVED INCLUDING

WRIGHT & DITSON

1905 Balls and Rackets

We are also prepared to furnish New Awnings and Verandah Curtains, or Discover Your Old Awnings Frames.

New Underwood

AND MANY MAKES OF SECOND-HAND

Typewriters

AND ALL VARIETIES OF

T W Papers and Supplies

Pearson & Potter Co., Ltd. 931 Fort Street.