

If you want today's News today you can find it in THE STAR.

THE HAWAIIAN STAR.

The Hawaiian Star is the paper that goes into the best homes of Honolulu

VOL. VI.

HONOLULU, H. I., MONDAY, FEBRUARY 5, 1906.

No. 2473.

A BOY'S FRIGHTFUL DEATH

DRAGGED BY A HORSE OVER STONES AND RIDGES.

Thrown from His Mount His Foot Caught in the Stirrup—Life Passed Out in Agony.

PAIA, Maui, February 2.—A very sad and distressing accident occurred in Makawao on Monday last, when the ten year old son of James Alana, met his death in a most frightful manner. He had gone out before breakfast, horseback, to drive up some horses and not returning to breakfast, his mother went to look for him, and found him with one foot caught in the stirrup of his saddle, dragging along the ground, but still alive. Almost crazed she ran screaming to her husband who went out and carried the boy down to the house, but when they reached the same the poor little fellow was dead. Evidences showed that the horse must have bolted, and running under a palm bush brushed the boy off, his foot catching in the stirrup as he fell, and the horse thereafter dashed round and round dragging the little fellow over stones and ridges, bruising him up in a most dreadful manner. The funeral took place on Tuesday from the Catholic church, Makawao.

THE BOY EMPEROR.

One of Four from Whom Selection was Made.

Leung Chi-tso says he has been somewhat misunderstood as to what he knows about Put Sing the supposed new emperor. Put Sing, he says belongs to the Imperial family, through his father has never held important official position. Put Sing is one of four children who were brought to the Palace a year or more ago, at which time it was understood that the Dowager Empress would select one of them as the successor of the Emperor Kwang Sul. He is a nine year old child, who at the present time speaks only the manchu language and not the Chinese. Mr. Leung disclaims being an organizer of the Chinese Empire Reform Association, the organization having been effected before he came. Nor does he propose to interfere in any way with the politics of China. He is a traveler, seeking the education and liberalizing effects of travel. There is no antagonism between himself and Dr. Sun Yet Sin.

Note Heads, Bill Heads, Statements and Fine Commercial Printing at the Star Office.

NEW ADVERTISEMENTS

ROOM TO RENT.

Nicely furnished room for gentleman; close in. Apply by letter to "X," Star Office.

NOTICE TO INTENDING PASSENGERS PER S. S. AUSTRALIA.

Notice is hereby given that Passengers for San Francisco per S. S. "Australia," hence on the 20th instant, will have to comply with the United States Health Regulations prior to departure for San Francisco to the entire satisfaction of the United States Consul-General and Federal Health Officer, not later than twelve o'clock noon, Tuesday, the 6th instant.

WANTED.

Office boy, honest, bright, and reliable. Apply to Mr. McClellan at Hawaiian Electric Co., Tuesday, between 8 and 10 o'clock.

WANTED.

A competent stenographer able to assist in general office work. Apply in handwriting to E. P. O. Box 144, stating experience and salary expected.

Sugar Plantation Bonds...

Are desirable investments for trust funds.

We make a specialty of the bonds of such companies as have first been subjected to a thorough legal and financial examination; and we are prepared to furnish full data regarding the properties of the companies whose bonds we have purchased and offer for sale at prices to yield a safe income and good investment.

We will take subscriptions for the following at 2 1/2% premium: KAHUKU, 5-10 year 6% gold bonds; security, \$750,000; issue, \$200,000.

EWA, 5-10 year 6% gold bonds; security, \$5,000,000; issue, \$500,000.

We are TRUSTEES for both of the above issues.

HAWAIIAN TRUST & INVESTMENT CO., LTD. GEO. R. CARTER, Treasurer Tel. 184 409 Fort St., Honolulu

PLAQUE DEATHS AND CASES

BAD RECORD IN THE PAST TWO DAYS.

One Case Today and Two Yesterday. Mr. Robertson Dies of Plague—Native is Stricken.

There has been one suspect plague case today. The patient is Koali, Hawaiian man, aged 30, from the kerosene detention camp. He went to the camp in one of the last lots, at the time of the big fire, and came from near the corner of King and Kekaulike streets. Dr. Hoffman adjudged the case as suspicious and asked the Board of Health for a consulting physician. Dr. Hoffman went down and agreed that the case was one of plague. The patient was sent to the pest house where he is now under treatment. Superintendent Atkinson expected to release 723 people from the camp today. Just what effect the new case will have is not known, as it is a matter for the Board of Health to consider this afternoon. However, as the people to be released were in separate corrals it is not likely that they will be stopped. It is understood from the camp, however, that not over half of the people will accept the chance to go as they have no homes and no places to stay. They will be allowed to remain until they can make arrangements. When this batch is gone only about 450 people will remain at the kerosene camp. A case of plague was taken from the Kailhi camp yesterday afternoon to Kakaako. The patient's name is Kekau, a Japanese. When examined his temperature was 104 and pulse 130. Drs. Howard and Garvin both considered the case very suspicious. Frank de Mello, Portuguese, living a short way up Puaou valley, has been under surveillance since yesterday evening. Dr. Peterson considered the case suspicious and established a guard. This morning he found the door barred and was told that he could not enter. In response to a telephone message Dr. Wood, President of the Board of Health, instructed Dr. Peterson to summon a policeman and break the door if necessary to gain entrance. Fortunately harshness was not necessary. This afternoon the case is not considered very suspicious. Temperature 102 1/2; pulse 70; inguinal bubo, small.

Mr. Weir Robertson died at the pest house in Kakaako about 4 o'clock yesterday afternoon of plague. The forenoon he was reported better and at 12 was thought to be no worse. The first examination in the afternoon, however, revealed more serious symptoms. At 1 o'clock the patient sank rapidly and he died at the hour stated. The body was removed to the morgue where an autopsy was held at 9 o'clock last night in the presence of several physicians, among whom was Dr. Carmichael, of the United States Marine hospital service.

The death of Mr. Robertson was a great disappointment to the Board of Health and produced considerable annoyance in the community. It was the first patient upon which the plague serum had been tried. The result was not satisfactory. The post mortem showed, however, that Mr. Robertson's case was a very bad one and he was probably too far gone when taken in hand.

Mr. Robertson was employed at the Waterhouse store of Henry May & Co. in Bethel street at a salary of \$100 a month. He sent \$20 of this to his sick wife in a hospital in California. His little sons in Bishop Willis' school cost \$200 a year more, leaving \$400 a year for the support of himself and daughter, aged 14. A year of this strain had impaired his constitution notably and left him an easy prey to disease.

Mrs. Robertson is a daughter of the late George Emmes and a sister of Mrs. John Cassidy. Gee Mui, Chinese girl baby, aged one year, died in one of the detention houses at Kailhi yesterday afternoon of plague. The child had been sick about a day. There was no doctor until after death. The body was brought to the morgue where an autopsy was held last night. Gee Mui was the little daughter of Ah Chuck, the Hotel street restaurant keeper. The family lived at one time on Puaou street below Smith, but about the time of the big fire moved into one of the buildings facing Kukul street which was not destroyed. There they were found and sent to Kailhi. At the camp the family occupy a special house set apart for those who wish to pay the additional expense.

Saturday afternoon Dr. Garvin returned a verdict that Wong Chin, the man from the Pantheon stables who died at the Chinese pest hospital in Palama, had the plague. There was an unmistakable showing of bacilli in the cultures made.

HERE AT LAST. "The Hawaiian Scenic Calendar" published only by The Golden Rule Bazaar, 315 Fort street, was received by the S. S. "Mariposa" and is the handsomest piece of work in this line ever offered the public. Secure one and send it to the folks at home—they will greatly appreciate it, and it only costs 50 cents.

You're Another

Sufferer from the result of poor repair work. But if you bring your Bicycle, Gun, Typewriter or any article of fine mechanism to us when it needs repairs, and it will be overhauled and put in such shape that it will meet with your thorough satisfaction. Better still, telephone us 565, and we will SEND FOR AND DELIVER WITH-OUT EXTRA CHARGE.

We employ only the best skilled help and guarantee all our work. Kodaks repaired, Tennis Rackets restring. Keys made. Fine enameling a specialty. In fact repairing done in all its branches.

PEARSON & POTTER CO., LTD. 312 Fort Street Remember the 'Phone, 565

MEMBER FROM CALIFORNIA

PLEADS NOT GUILTY TO BEING DRUNK.

But Does Not Plead His Exemption From Arrest During Session of the Legislature—Fined \$2.

The member from California pleaded not guilty before Judge Wilcox, but did not plead his privilege from arrest during the session of the legislature. His name is Amil Nye, and like his famous namesake Bill Nye, who was once a Justice of Peace in Wyoming, he claimed long acquaintance with courts, in addition to being a member of the California legislature, the one now in session to elect a United States Senator.

The Honorable Amil Nye was charged with being drunk creating a good deal of noise at Emma and Beretania streets early Sunday morning, in addition to stopping a milkman and a man on a bicycle. He stood in his blue overalls in the witness box and made quite a speech in his own defense. He claimed that he had been held up in the dark but had escaped robbery by his own efforts, and had stopped the milkman and the bicycle rider to get their help to apprehend the highway man. He admitted having had a few drinks but argued that for the time being he was drunk on the gutter that gave no one a right to rob him; also that he could not have been drunk or the police would have been obliged to keep him in a cell longer than three hours to sober up.

He had resigned a position at San Quentin, he said, to come here on an invitation to accept a position in the custom house. But somehow, although he had seen President Doie and the Collector-General, he had not gotten the position. Judge Wilcox fined him \$2 and costs, the regular amount for an "ordinary" drunk. He failed to find anything extraordinary in the fact that Honolulu liquor, drunk in quantity, made a California legislator or a man acquainted with courts, drunk. In fact from a long series of observations he had come to the conclusion that such was an ordinary effect of it. He thought it might be a matter of regret to the member from California that he was not able to be present at the present session of the California legislature called to elect a United States senator.

TO EXTEND SEWERAGE

The Cabinet this morning decided to immediately extend the sewerage to Wylie street and Punahou, in compliance with a resolution of the Board of Health passed on Saturday. Minister Young was instructed to at once invite tenders here and on the mainland for the work. Advertisements will go forward to the coast by the next mail. At the meeting this morning President Doie read the resolution of the Board of Health in regard to burning the goods in warehouse at Aala. The President suggested an amendment declaring the goods perishable, already injured, liable to spoil and deleterious to the public health.

CAPTURED PET RATS.

Manager Lucas, Hawaiian Hotel, Catches a Pair.

As a rat catcher Manager Lucas, of the Hawaiian hotel, will not accept a second ribbon. When plague broke out, as is probably generally known, there was a quiet war on rats all over Honolulu. Traps, good, bad and indifferent, were taken out in every household and baited with the four best rat carriers. "Pete" set two traps. Nothing happened, the traps remaining empty until they had been almost forgotten about. Last week Mr. Lucas examined one of his traps, and found therein in a beautiful white rat with pink eyes. In place of getting frightened and struggling to escape the little animal made directly for the hotel manager and acted in the most friendly and trusting manner. When turned out of the cage it climbed up Mr. Lucas' trousers and took a comfortable seat on his arm. The rat plainly showed itself to be well-tamed and quite tame.

Next day the other trap made a capture. This was a pied mouse, an exceedingly pretty as well as uncommon animal. This little fellow also refused to leave, seeming perfectly tame and as playful as a kitten. It was so tame that he was sure he has captured someone's pets. The animals await a claimant at the hotel.

SYMPATHETIC MAGISTRATE.

"Yes, I was drunk, your honor," the prisoner said, "but I've been pretty well punished already. I had \$60 when I went out on the street, and a lot of gamblers got hold of men and swindled me out of \$58."

"Under those circumstances," remarked his honor, with a sympathetic cough, "the court is disposed to be lenient with you. The fine will be \$2."

AN EDITOR'S LIFE SAVED BY CHAMBERLAIN'S COUGH REMEDY. During the early part of October, 1896, I contracted a bad cold which settled on my lungs and was neglected until I feared that consumption had appeared in an incipient state. I was constantly coughing and trying to expect something which I could not. I became alarmed and after giving the local doctor a trial bought a bottle of Chamberlain's Cough Remedy and the result was immediate improvement, and after I had used three bottles my lungs were restored to their healthy state.—B. S. Edwards, Publisher of The Review, Wyant, Ill. For sale by all dealers and druggists. Benson, Smith & Co., general agents, Hawaiian Islands.

SURPRISING LOW PRICES. A very complete line of Gents' furnishings goods, and the very latest styles can be secured at L. R. Kerr & Co., Ltd. at prices that are surprisingly low.

THE TOTS IN QUARANTINE

HOW THEY ARE KEPT WELL AND HAPPY.

Mrs. Dole sends a Generous Supply of Material for Baby Clothes—Music Boxes and Toys.

Battery camp is indebted to Mrs. Dole and the ladies of Hawaii for a generous supply of material for clothing. Seven Hawaiian women are kept busy in the sewing room. The material is rapidly being metamorphosed into beautiful baby clothes, and warm hokulokus. These are in constant demand. There are about thirty children in camp. It requires constant attention to keep them well-fed and comfortably clothed. A music box, donated by H. S. Toward, and some toys sent by Rev. G. L. Pearson, have added greatly to the enjoyment of the little people. It is no easy task to keep children in quarantine well and happy.

Fourteen Hawaiians were released from Battery Camp on Saturday. With them went T. U. Kaloie, one of the best general helpers. Sunday one Frenchman, one Hawaiian, fifty-three Chinese, and fourteen Japanese were released, among them being S. Wakita, Dr. Ookwara's boy, who for the past week has attended to the wants of his people at Battery Camp.

Some of the most useful articles sent to Battery camp are pillow cases. Since acknowledging their receipt through the courtesy of The Star, the camp has learned that it is indebted to Mr. Girdler, Mrs. Albert Lucas, and Mrs. McEwen for material. The pillow cases have been used all along the line, the pest house utilizing its share.

THE WEATHER.

Weather Bureau, Punahou 1 p. m. Wind moderate north northeast; weather cloudy; slight haze of yesterday seems to have blown over. Morning minimum temperature, 64; midday maximum temperature, 73; barometer, 9 a. m., 30.05, rising (corrected for gravity); rainfall, 2 1/4 hours ending 9 a. m., .55; dew point, 5 a. m., 61; humidity, 2 a. m., 78 per cent.

CURTIS J. LYONS, Observer.

MRS. KAUHANE DEAD.

Mrs. J. Kauhane, wife of Senator Kauhane of Kau, died in Kailhi last night of bronchial pneumonia. The remains will be embalmed by Ed. A. Williams and will await instructions here from the family on Hawaii.

BERT PETERSON.

D. Howard Adams received a letter from Bert Peterson from Aia by the Alameda. Peterson was in the best of spirits and hopeful of the big scheme he has in mind. He expected to leave the yacht in the colonies and proceed on to Europe. He said the next letter from him would be from London or New York.

MUST FUMIGATE AGAIN.

The Nuuanu street store of Wing Wo Tai and company was fumigated from Saturday afternoon till this morning, but it will all have to be done over again. The store was opened this morning and inspected by Professor Ingalls. He found some cockroaches alive, though there were many dead ones, and according to the instructions that if anything remains alive after the fumigation another dose must be given, he ordered the work repeated.

SCHOOL HOUSE FINISHED.

PAIA, February 2.—The new one room addition to the Kaupakalua school house is now finished, and waiting for its desks and furniture.

MAKAWAO CHURCH.

MAKAWAO, February 2.—The Rev. Mr. Jones, of Chico California, will occupy the pulpit of the Makawao Foreign church on Sunday next.

AN OCEAN TRAGEDY.

A Dog's Long Swim That Was in Vain. Just before the bark Iolani was towed from her anchorage outside by the steamer Helene, a dog jumped or was thrown overboard from the bark. The animal was about three miles out, but the animal turned his head shoreward and started on the long swim to land. He was passed going through the channel by boarding officer Scanlan of the custom house, who wanted to pick the brute up, but could not stop. The dog soon arrived at the Pacific Mall wharf, thoroughly exhausted, and could not make a landing. He swam to the pier and his strength gave out. The dog was drowned and his body floated out the channel through which he had just struggled.

IOWA'S EX-GOVERNORS.

The last seven ex-governors of Iowa are yet living, as follows: Joshua G. Newbold of Mount Pleasant, 1877-78; John H. Gear, Burlington, 1878-82; Rurion R. Sherman, Waterloo, 1882-86; William Larrabee, West Union, 1886-90; Horace Boies, Waterloo, 1890-94; Frank D. Jackson, Des Moines, 1894-96; Francis M. Drake, Centerville, 1896-98.

HASN'T HEARD THE RUMORS.

Secretary Root declines to be a candidate for vice-president on the plea that he is needed in the office of secretary of war. Mr. Root evidently has not heard the news which is current in Nebraska and Texas that Mr. Bryan is to select the next secretary of war.—Chicago Record.

FOR CAMARINOS' REFRIGERATOR.

Per S. S. Australia—Peaches, Grapes, Oranges, Lemons, Limes, Celery, Cauliflower, Cabbages, Pears, Plums, Fresh Salmon, Flounders, Halibut, Crabs, Eastern and California Oysters (in Tin and Shell), all Game in Season, Turkeys, Chickens, New crop of Nuts and Dried Fruits, Onions, Burbank Potatoes, Swiss, Parmesan, Rockeford, New Zealand and California Cream Cheese, Olives. All kinds of Dried Fruits.

Hanan creates the style and leaves others to follow.

M'INERNEY SHOE STORE.

PEOPLE OF MAUI PROVIDE

LADIES MET TO SEW FOR THE REFUGEES.

Sewing Bees at Spreckelsville, Makawao and other places—H. P. Baldwin sends a Big Donation of Produce.

SPRECKELSVILLE, February 2.—The ladies of Spreckelsville have met together every day of this week and sewed for the unfortunates of Honolulu On Tuesday next the ladies of Makawao will meet at the home of Mrs. D. C. Lindsay, Paia, and spend the entire day sewing and putting together articles of wearing apparel for the burned out people.

H. P. Baldwin is this week sending down all the potatoes, taro and other produce he could gather together, as a donation to the needs of the same unfortunates. So Maui expresses her sympathy for the hapless people.

LAHAINA, February 4.—Some of the ladies of Lahaina have been collecting clothing, and in some instances coin, to assist those in Honolulu who lost their all in the great fire.

The first lot was forwarded to the President of the Board of Health last evening, by the Iwalaui, and more will be sent soon. All who were asked to assist responded liberally, especially the Hawaiians and the Chinese.

CHAPTER OF ACCIDENTS.

Falls, Bruises, Kicks, Scalds and Crushing in Kohala. KOHALA, February 3.—There has been a series of accidents on Kohala plantation the last week. One Jap fell down the shaft, a heavy stone grazed and bruised another, while he was going down the shaft, and still another was kicked in the mouth by a mule. None of the accidents have proved fatal so far.

A little two year old child, half Chinese at Niihi was severely scalded with hot water a few days ago. The parents made applications of poi and the child seems to be improving.

A three year old Japanese child at Union Mill had its hand so badly cut by the wheel of a trash car that the hand had to be amputated.

A Chinese shattered his hand while firing off a bomb in celebration of the Chinese New Year.

DRILL SHED CAMP.

Tomorrow morning the band will enter the detention camp at the drill shed and give a concert for the benefit of the people confined there. This will be repeated each morning until the camp is cleared. On Thursday morning the Japanese there will be released. The Chinese will be allowed to go Saturday morning.

STREET'S CARS AGAIN.

Street cars resumed traffic about 10 o'clock this morning. The start was made from both ends of the line, though Beretania street was the first to get the service. The cars have all been carefully scrubbed and disinfected, and are in good sanitary condition. They will be cleaned thoroughly every day.

HONOLULU STOCK EXCHANGE.

Morning Session—Sales: On the board, none. Sales: Between board, none. Quotations: Bid. Asked. American, paid up \$100.00 Ewa 157.50 Honolulu 157.50 Honolulu 25.00 28.00 Kahuku 135.00 155.00 Kihel, assessable 12.00 Kihel, paid up 35.00 McEwen, assessable 5.00 Oahu, paid up 171.00 178.50 Okaia 35.00 3.00 Oiaa, assessable 3.00 Oiaa, paid up 11.50 13.75 Oiwailu 145.00 Oiwailu, assessable 190.00 220.00 Waiakua, assessable 69.00 74.00 Waiakua, paid up 109.00 114.00 Wilder Steamship 120.00 Inter-Island 165.00 Hawaiian Electric 180.00 Mutual Telephone 35.00 People's Ice 175.00 Hawaiian Govt. St. 101.50 Hawaiian Govt. St. 101.00 Oahu Railway Bonds 105.00 105.50 Ewa 6 per cent 101.50 102.50 Kahuku 6 per cent 101.50 102.50

JUST THE PATIENT FOR HIM.

Young Dr. Fresh—Here comes that Mrs. Towler. Positively, there isn't the first thing that ails her. Old Dr. Sage—Evidently you are just the man for her case.

MARRIAGE CUSTOMS.

The marriage customs of nations are quaint. A Hottentot widow marrying again has to cut off the joint of a finger, which she gives to her new husband. Each time she becomes a widow and marries again she has to sacrifice one finger-joint.

HAS FEW EQUALS.

For light running, easy adjustments, and good work the Singer Sewing machine has few equals and no superiors—B. Bergersen, agent, Bethel street.

AT THE OLD STAND.

General blacksmithing and carriage repairing business in all branches at the old stand, Fort street, W. W. Wright.

ABOUT THE SAME COST.

Everything a man needs to supply his burned laundry can be obtained of L. E. Kerr & Co., Ltd. at a little more than the cost of a wash bill. at the Star Office.

ANOTHER FIRE PROJECTED

PORTION OF MECHANIC'S HOME CONDEMNED.

Will Likely Be Burned Tomorrow by Orders of Board of Health—About the Pantheon Corner.

A large portion of the Mechanic's home will be burned as soon as it can be gotten ready. This has been fully decided upon by the Board of Health. The fire will probably take place tomorrow.

Five cottages of the home will go up in smoke. The first one is the building occupied by Louis Marks as a stable for his water carts and teams. There is one eight room cottage and three smaller ones, one of which is the office building. Both of the buildings on the main side of the Nuuanu street entrance will be burned. The district to be burned will be all that on the Ewa side of the Hotel street entrance and the two cottages mentioned on the other side.

A big gang of workmen is engaged today cleaning and fumigating in and about the Pantheon saloon and stables. Prof. Ingalls has charge of the interior work. Workmen under Mr. Ables are making the exterior improvements. All of the flooring under the former hack stand at the corner is being torn up. The ground beneath will be treated to a heavy solution of sulphuric acid, for which a new floor will be laid. All partially decayed portions of the building are also being repaired.

"You may say that I am perfectly satisfied with the action of the Board of Health," said Mr. Ables. "As you know I have control here and I will see that all interested that the Board of Health has done its duty up to the limit and has not exceeded it. Of course the orders of the Board will cost us considerable money in the way of repairs and loss of business, but the Board has done its duty to the community in the precautions taken. I hope when we lay a new floor that the hack stand will be allowed to resume business, but I do not know yet what will be done."

John Sullivan, proprietor of the Pantheon stables, said: "I object to the statement in the press that the Chinaman, Ah Man, slept in our stables. The facts are he slept for a time in the upper story of the building at the Hotel street entrance to the premises, the greater portion of which was occupied by Mr. Dodd. The man had nothing to do with the stables, was never in here to my knowledge and I do not see why the thing should be 'saddled' on to the stables. My belief is that he was not on the Dodd premises in some days prior to his fatal illness."

QUARANTINE ISLAND CLEAR.

Quarantine Island is once more clear of immigrants. This morning all the guards were withdrawn, leaving only the keeper and Japanese interpreter on the island. There are six Chinese and sixteen Japanese on the island who will be returned to the Orient. They were rejected for health reasons.

CHINAMAN HAS COMPLAINT.

A prominent Chinese merchant with a wholesale business on Hotel street near Makawao has quite a complaint against one of the physicians of the Board of Health. His family was taken to Kailhi last week. They were to be given a bath and new clothes, and were ordered to disrobe. Thinking they were slow the doctor is said to have torn the clothes from the man's wife and hustled her off to the bath. The Chinaman asserts that this was done in the presence of several guards.

PUERTO RICO.

The merchants' association of New York city is sending out to merchants all over the country an appeal for free trade between the United States and Puerto Rico, and asking them to press the matter upon Congress. It is the belief of the association that Puerto Rico tobacco will not compete with any grown in the United States, but the mainpring of the association's action is plainly a desire for trade, more trade free trade, if you please.—Springfield Republican.

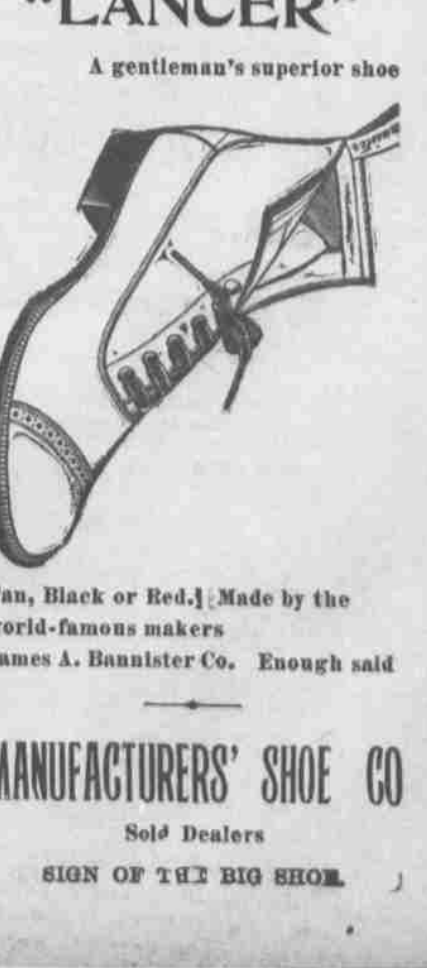
Fine Book and Commercial Printing at the Star Office.

Right up to date is the "LANCER"

A gentleman's superior shoe

Tan, Black or Red, Made by the world-famous makers James A. Bannister Co. Enough said

MANUFACTURERS' SHOE CO. Sole Dealers SIGN OF THE BIG SHOE.



THE VON HAMM-YOUNG CO., LTD.

IMPORTERS OF GENERAL MERCHANDISE
QUEEN STREET

Just received a nice Assortment of

BABY CARRIAGES WITH RUBBER TIRES

Also a complete line of all kinds of

SADDLES

.. SOLE AGENTS FOR ..

The Lancaster Fire and Life Insurance Co., of Manchester, England
The Balise Insurance Co., of Basel, Switzerland
The Union Gas Engine Co., of San Francisco
The Hasleburst Centrifugal Pumps
The Domestic Sewing Machines
The Hand Sewing Machine "New Pacific"—and other agencies

Baby Carriages and Pictures

A new invoice just opened, and they are selling fast.
Call early or you will miss a choice.

New Furniture Now being unpacked, and will be on sale in a few days.

GITY FURNITURE STORE

H. H. WILLIAMS, Manager Tel. 846 Love Building, Fort Street

Canadian-Australian Royal Mail STEAMSHIP COMPANY

Steamers of the above line, running in connection with the CANADIAN PACIFIC RAILWAY COMPANY between Vancouver, B. C., and Sydney, N. S. W., and calling at Victoria, B. C., Honolulu, and Brisbane, (Q.), are

Due at Honolulu on or about the dates below stated, viz:

| | | | |
|--|----------|--|----------|
| From Vancouver and Victoria, B. C., for Brisbane and Sydney: | 1900 | From Sydney and Brisbane, for Victoria and Vancouver, B. C.: | 1900 |
| MIOWERA | FEB. 17 | AORANGI | FEB. 21 |
| WARRIMOO | MAR. 17 | WARRIMOO | MAR. 14 |
| AORANGI | APRIL 14 | MIOWERA | APRIL 11 |
| | | WARRIMOO | MAY 9 |

The magnificent new service the "Imperial Limited" is now running daily

BETWEEN VANCOUVER AND MONTREAL

Making the run 100 hours without change. The finest Railway service in the world.

Through tickets issued from Honolulu to Canada, United States and Europe.

For freights and Passage and all general information, apply to

THEO. H. DAVIES & CO., Ltd., Gen'l Agts.

Pacific Mail Steamship Co. Occidental & Oriental S. S. Co. and Toyo Kisen Kaisha.

Steamers of the above companies will call at Honolulu and leave this port on or about the dates below mentioned:

| | | | |
|----------------------|---------|---------------------|---------|
| FOR JAPAN AND CHINA: | | FOR SAN FRANCISCO: | |
| CHINA | JAN. 31 | COPTIC | FEB. 10 |
| DORIC | FEB. 8 | AMERICA MARU | FEB. 17 |
| NIPPON MARU | FEB. 16 | GAELIC | MAR. 6 |
| RIO DE JANEIRO | FEB. 24 | HONGKONG MARU | MAR. 15 |
| COPTIC | MAR. 6 | CHINA | MAR. 24 |
| AMERICA MARU | MAR. 14 | DORIC | MAR. 31 |
| PEKING | MAR. 22 | | |
| GAELIC | MAR. 30 | | |

For general information apply to

H. HACKFELD & CO., Ltd. Agts.

Oceanic Steamship Company.

TIME TABLE

The Fine Passenger Steamers of This Line will arrive at and Leave this Port as Hereunder:

| | | | |
|---------------------|---------|--------------------|---------|
| FROM SAN FRANCISCO: | | FOR SAN FRANCISCO: | |
| MOANA | JAN. 31 | ALAMEDA | FEB. 2 |
| AUSTRALIA | FEB. 14 | AUSTRALIA | FEB. 20 |
| ALAMEDA | FEB. 28 | MARIPOSA | MAR. 2 |
| AUSTRALIA | MAR. 14 | AUSTRALIA | MAR. 20 |
| MARIPOSA | MAR. 28 | MOANA | MAR. 30 |

In connection with the sailing of the above steamers, the Agents are prepared to issue, to intending passengers coupon through tickets by any railroad from San Francisco, to all points in the United States, and from New York by and steamship line to all European Ports.

For further particulars apply to

W. G. Irwin & Co. (LIMITED)

General Agents Oceanic S. S. Company.

SHIPPING INTELLIGENCE

ARRIVING.

Sunday, February 4.
Schr. Defiance, Blom, from Puget Sound via Aberdeen, January 5: 688,811 feet lumber.
Br. Charles B. Kenny, Anderson, from Chemamus, B. C., December 26: 1699 tons coal.
Stmr. Upolu, Dalton, from Kona, February 2.
Schr. Mol Wahine, from Hawaii ports, Monday, February 5.
Stmr. Claudine, Macdonald, from Maui ports: 2,000 bags sugar.

DEPARTING.

Saturday, February 3.
Brg. J. D. Spreckels, Erratt, for San Francisco: 6284 bags sugar, 785,500 lbs., value \$30,029.
Schr. Chas. E. Falk, Brown, for Puget Sound in ballast.
Monday, February 5.
Stmr. Lehua, Dwyer, for Kaunakakai, Maunaloa and Olowalu, 5 p. m.
Wednesday, February 7.
Stmr. Claudine, Macdonald, for Lahaina, Kahului and way ports, 5 p. m.
Tuesday, February 6.
Stmr. Upolu, Dalton, for Hawaii ports.

HONOLULU.

Arrived, January 31, Schr. John G. North, Austin, from San Francisco with general merchandise.

"WHERE ARE WE AT" NOW

To a Honolulu water front genius belongs the honor of sending the century discussion on an entirely new tack, and actually discovering that instead of being on the eve of the 20th century, we have not begun the 19th, but are somewhere far back in the first half of the 18th. It not only got credit for the discovery to another man at about noon today, when a conversation something like the following took place: "There goes the whistle,—twelve o'clock."
"No—it's only eleven."
"How do you make that out—look at the clock."
"I don't care for the clocks. They are not properly made. It is now eleven o'clock. In an hour it will be twelve, when the hands say one. An hour later it will be none o'clock, and so on."
"How are you getting on through the day even with other people at that rate? You'll soon get a week behind. What date do you call today?"
A piece of paper was produced, with a lot of figures on it. Then came the startling answer: "At this year, we are where we were in the year 1742. Just where I cannot tell yet. You see, it's a very complicated problem, and I've got a good deal of work to do on it. I've had to add one hour to every day since the year one, or naught. That's 365 hours a year, or 30 5-6 days. In 1899 years that amounts to 1899 months. That means no less than 158 1-3 years to be taken from 1899. This would make today about the end of the year 1742."
"So far so good, and I thought I had my dates fixed, but I suddenly remembered that there were other things to be considered. To every minute I must add a no-seconded and to every hour the one minute that has never been counted. Then I shall have to think about the four weeks of every month. The days and weeks are all right, because they are named, but there are really only six days in every week and eleven months in every year. If you count, beginning January none you'll see. By the way, that might change other. I ought to have taken more than one hour from every day, to allow for the lost minutes and seconds. I shall have to go all over it again. We may find ourselves in the seventeenth century yet."

ARRIVING.
Sunday, February 4.
Schr. Defiance, Blom, from Puget Sound via Aberdeen, January 5: 688,811 feet lumber.
Br. Charles B. Kenny, Anderson, from Chemamus, B. C., December 26: 1699 tons coal.
Stmr. Upolu, Dalton, from Kona, February 2.
Schr. Mol Wahine, from Hawaii ports, Monday, February 5.
Stmr. Claudine, Macdonald, from Maui ports: 2,000 bags sugar.

GOODS TO BE DESTROYED

"Whereas, there are now stored in the Asia warehouse large quantities of merchandise which was removed from the infected blocks prior to the fire of January 20th, and also many parcels of personal effects also taken from said blocks, and there is reason to believe that said goods and effects are infected with plague and from their nature it would be difficult by any treatment short of destruction by fire to render the same harmless to a reasonable certainty; and whereas, it has been recommended by the merchants' committee that an appropriation of \$100,000 be asked for to pay 66 2-3 per cent. of the value of said goods, 50 per cent. of the owners of the same having signed their receipts to accept the said percentage in full of all claims; and whereas, in the opinion of the Board the public safety requires that said goods and effects, other than hardware, sewing machines, and other goods which can be effectually fumigated, should be destroyed.

Resolved, that the Executive Council be requested to ask the appropriation of the Council of State of the sum of \$100,000 for the purpose of paying 66 2-3 per cent. of the value of such goods and effects, as determined by appraisement, and of paying for such other merchandise as may be destroyed by order of the Board of Health.

The above resolution was submitted by Mr. Hatch to the Board of Health Saturday afternoon and passed unanimously. It means the destruction by fire of merchandise taken from stores in Chinatown, fumigated and stored in the two warehouses at Aala. It is estimated that the invoice value is \$150,000, and that, on a basis of a two-thirds settlement, \$100,000 will pay the damages.

The action marks the beginning of a new policy and will probably lead to the destruction of all goods taken from the infected district. Merchandise in the Hotel street warehouse has already been condemned and will be burned.

The old house, near the corner of Queen and Maunakea streets, beyond the Honolulu Iron Works and up toward King street, will be torn out and destroyed. Following this all the stores on the main side of King street from Nuuanu to Maunakea will be allowed to open for business. This is the district in which Murray's shop is located.

A protest from J. F. Morgan against the destruction of flour and bread in Love's bakery on Nuuanu street was read. Mr. Morgan will be informed that the former action of the Board in declaring this material a source of infection must stand.

Saturday afternoon the work of fumigating all the stores in the Waverly block was begun. A large force of assistants was employed. Prof. Ingalls superintended the work. All day Sunday fumigating and cleaning went on. The whole yard in rear of the block was cleaned up and most of the material destroyed. Stores in the block were allowed to open this morning for business.

Fine Job Printing, Star Office.

I am Showing

This morning a splendid assortment of Unbleached, Bleached and Colored

LINEN TABLE DAMASK

E. W. Jordan
10 FORT STREET

ARTESIAN WELLS

L. E. PINKHAM, Contractor
Office with the Pacific Hardware Co. Honolulu, H. I.
Estimates given and contracts made for wells on any of the Islands.
SIX NEW PLANTS
For heavy work operated by the most skillful highest class drillers.

The Kash Fall Suits

Which we are showing in such lavish profusion, one wonders if further improvement is possible. Its a line fully consistent with fashion's requirements, magnificent specimens of tailoring—perfect examples of fabric, fit and finish; and a strong point about them is, they are exclusively ours and you need not fear duplication. As to Prices, "Come" expecting to find some surprises and you'll not be disappointed.

A Message Just Received

From our boys' and children's department.
Say, don't forget to tell the parents of Columbus about the splendid offerings we are making in boys' and children's clothing. Here is what it says:

Suits from 3 to 8 yrs. \$2 and up
Suits from 8 to 16 yrs. \$3.50 and up

"THE KASH"

TELEPHONES 678 AND 96.
2-LARGE STORES-2
Of the Best Furnishings

Nos. 9 and 11 Hotel Street and Cor. Fort and Hotel Streets

The Tea Department

Is one of the special features of our business. Thirty years of close application, study and varied experience enable us to select teas unsurpassed both in quality and price. For richness, strength, quality, tone, flavor and purity we claim our teas unsurpassed.

For rich aromatic blends of great strength, combining the delicious "fragrance of the Orient," we specially recommend our "Maltese Cross" blends. These are the perfection of the tea expert's skill. Their sale is very large and steadily increasing, demonstrating the value of judicious blending.

LEWIS & CO.

111 Fort Street. Telephone 240

BEVER LUNCH ROOM.

Fort Street. Opposite Wilder & Co. H. J. NOLTE, Prop'r.

First Class Lunches served with tea, coffee, soda water, ginger ale or milk

Smokers' Requisites a Specialty.

Metropolitan Meat Co.

81 KING STREET.

Wholesale & Retail Butchers AND NAVY CONTRACTORS.
G. J. WALLER, : : : Manager.

Cannon Cigarettes



New and Superior Brand
Best Value for 5c.
Holder for each Cigarette

For sale at all Retailers. Limited Supply at Wholesale by

HYMAN BROS.

White as Snow.
PORT COSTA FLOUR.
Washington Mercantile Co., Ltd.
SOLE AGENTS
CORNER FORT AND QUEEN STREETS

THE "MONITOR"



Is all that the name implies.
JOHN NOTT

Plumbing, Tin, Copper and Sheet Iron Work

DIMOND BLOCK. 75-79 KING STREET.

Honolulu Iron Works.

STEAM ENGINES, SUGAR MILLS, BOILERS, COOLERS, IRON, BRASS, AND LEAD CASTINGS.

BY AUTHORITY

IRRIGATION NOTICE.
Holders of water privileges, or those paying water rates, are hereby notified that the hours for irrigation purposes are from 6 to 8 o'clock a. m. and from 4 to 6 o'clock p. m.

ANDREW BROWN, Superintendent of Water Works.
Approved: ALEX YOUNG, Minister of the Interior
Honolulu, November 9, 1899.

EDISON ELECTRIC INCANDESCENT LAMPS

16 and 32 candle-power 100 and 110 volts

OCEANIC GAS & ELECTRIC CO. (LIMITED).

Fine Book and Commercial Printing at the Star Office.

Note Heads, Bill Heads, Statements and Fine Commercial Printing at the Star Office.

C. BREWER & CO., LTD

Queen St., Honolulu, H. I.
AGENTS FOR
Hawaiian Agricultural Co., Onomea Sugar Co., Honomu Sugar Co., Wailuku Sugar Co., Waihee Sugar Co., Mahee Sugar Co., Haleakala Ranch Co., Kapapala Ranch.
Planters' Line San Francisco Packets, Chas. Brewer & Co.'s Line of Boston Packets.
Agents: Boston Board of Underwriters-Agents Philadelphia Board of Underwriters.

LIST OF OFFICERS:
P. C. JONES.....President
GEO. H. ROBERTSON.....Manager
E. F. BISHOP.....Treas. and Secy.
COL. W. F. ALLEN.....Auditor
C. M. COOKE.....
H. W. ARMSTRONG.....
Geo. R. CARVER.....

Fine Book and Commercial Printing at the Star Office.

ATKINSON & JUDD
Attorneys and Counsellors at Law
Office, over Bishop & Co.'s Bank.
Cor. Kaahumanu and Merchant Sts.

F. M. BROOKS
ATTORNEY-AT-LAW.
Spreckel's Building.
Fort Street, Honolulu.

DR. I. MORI
136 Beretania St., bet. Emma and Fort
Telephone 277; P. O. Box 843
Office hours: 9 to 12 a. m. and 7 to 8 p. m.; Sundays, 9 to 12 a. m.

DR. A. C. WALL, DR. O. E. WALL,
DENTISTS.
LOVE BUILDING, FORT STREET.
OFFICE HOURS, 8 a. m. to 4 p. m.

M. S. GRINBAUM & CO.
Limited.
HONOLULU, H. I.
Commission Merchants and Importers
of General Merchandise.

San Francisco Office, 215 Front Street.
Equitable Life Assurance Society
OF THE UNITED STATES.

BRUCE CARTWRIGHT,
General Manager for Hawaiian Islands

O. G. TRAPHAGEN,
ARCHITECT.
223 MERCHANT ST., HONOLULU.
Between Fort and Alakea.
Telephone 743.

WILLIAM SAVIDGE
STOCK AND BOND
BROKER.
McInerney Block, Fort Street.

THOMAS LINDSAY
JEWELER.
DIAMONDS, WATCHES, CLOCKS
AND FINE JEWELRY.
Fine Watch and Jewelry Repairing
a Speciality.
234 Fort street. Honolulu, H. I.
P. O. Box 544.

CHARLES J. FALK
STOCK AND BOND BROKER
Member of the Honolulu Stock
Exchange.
Room 301, Judd Building.

G. DOHI
223 King Street, Honolulu.
STRAW HATS MADE TO ORDER.
Good ready made stock on hand and
for sale at low prices.

HOWARD & TRAIN
ARCHITECTS
Suite 7, Model Block, Fort Street
Telephone 989.

CONSOLIDATED SODA WATER WORKS
(COMPANY, LTD.)
Esplanade, cor. Allen and Fort Sts

HOLLISTER & CO., AGENTS.
H. K. MEEMANO & CO.
CONTRACTORS AND BUILDERS
Painters, Paperhangers and Decorators
All Work Neatly Done.
Office: Fort Street, Honolulu

J. H. FISHER,
Member of Honolulu Stock Exchange.
Stock and Bond Broker
411 Fort Street.

Advance Made on Approved Security.
T. R. MOSSMAN,
Real Estate Agent,
Abstractor and Searcher of Titles,
Loans Negotiated,
Rents Collected.
Campbell Building. Merchant St.

JOHN H. SOPER
Stock & Bond Broker
116 MERCHANT STREET

HONOLULU MERCANTILE AGENCY
Room 10, Spreckels Building.
J. H. MACPHERSON, Manager,
Collections a speciality. Prompt remit-
tances. No fee charged unless
collection is made.
Fort Street Honolulu, H. I.

M. PHILLIPS & CO.
Wholesale Importers and Jobbers of
AMERICAN & EUROPEAN DRY GOODS.
Corner of Fort and Queen Sts.

BANK OF HAWAII, LTD
JUDD BUILDING, FORT ST.
Incorporated Under the Laws of the
Republic of Hawaii.

CAPITAL, - - - \$400,000.00
OFFICERS AND DIRECTORS.
Chas. M. Cooke President
P. C. Jones Vice-President
C. H. Cooke Cashier
F. C. Atherton Assistant Cashier
Directors—Henry Waterhouse, Tom
May, F. W. Macfarlane, E. D. Tenney,
J. A. McCandless.

Solicits the Accounts of Firms, Cor-
porations, Trusts, Individuals, and will
promptly and carefully attend to all
business connected with banking
entrusted to it. Sell and Purchase For-
eign Exchange, Issue Letters of Credit.

Savings Department
Ordinary and Term Deposits received
and interest allowed in accordance
with rules and conditions printed in
pass books, copies of which may be had
upon application.

THE FIRST AMERICAN BANK
OF HAWAII, LTD.
Incorporated Under the Laws of the
Republic of Hawaii.

Authorized Capital, \$1,000,000
Subscribed Capital, 750,000
Paid Up Capital, 500,000

OFFICERS AND DIRECTORS:
Cecil Brown President
Mark P. Robinson Vice-President
B. F. Dillingham Vice-President
W. G. Cooper Cashier
E. M. Boyd Secretary
Directors—Cecil Brown, W. G. Cooper
H. M. von Holt, Mark P. Robinson and
Bruce Cartwright.

DRAW EXCHANGE ON:
San Francisco—The Anglo-Californian
Bank, Limited.
Chicago—The Merchants Loan and
Trust Company.
New York—J. & W. Seligman & Com-
pany.
London—The Anglo-Californian Bank,
Limited.
Paris—Societe Generale.
Hamburg—M. M. Warburg & Com-
pany.
Hongkong and Yokohama—The Chartered
Bank of India, Australia and
China.
Australia—The Union Bank of Aus-
tralia, Limited.
Canada—Bank of Montreal.
Berlin—Gebruder Meyer.

Exchange bought and sold. Letters
Credit issued on all parts of the world.
ESTABLISHED 1858.

BISHOP & Co.,
Bankers,
TRANSACT A GENERAL BANKING
AND EXCHANGE BUSINESS.
COMMERCIAL AND TRAVELERS'
LETTERS OF CREDIT ISSUED.
AVAILABLE IN ALL THE
PRINCIPAL CITIES OF
THE WORLD.

INTEREST allowed on fixed deposits:
Three months, 3 per cent; six
months, 3½ per cent; twelve months, 4
per cent.

CLAUS SPRECKELS, WM. G. IRWIN.
Claus Spreckels & Co.
BANKERS.
HONOLULU, H. I.
San Francisco Agents—The Nevada
National Bank of San Francisco.
DRAW EXCHANGE ON
SAN FRANCISCO—The Nevada Na-
tional Bank of San Francisco.
LONDON—The Union Bank of London,
Ltd.
NEW YORK—American Exchange Na-
tional Bank.
CHICAGO—Merchants' National Bank.
PARIS—Credit Lyonnais.
BERLIN—Dresdner Bank.
HONGKONG AND YOKOHAMA—The
Hongkong and Shanghai Banking
Corporation.
NEW ZEALAND AND AUSTRALIA—
Bank of New Zealand.
VICTORIA AND VANCOUVER—Bank
of British North America.

TRANSACT A GENERAL BANKING
AND EXCHANGE BUSINESS.
Deposits Received. Loans Made on
Approved Security. Commercial and
Travelers' Credits Issued. Bills of Ex-
change Bought and Sold.

COLLECTIONS PROMPTLY AC-
COUNTED FOR.

BISHOP & CO.
Savings Bank
Until further notice, Savings Deposits
will be received and interest allowed
by this Bank at four and one-half
per cent per annum.
Printed copies of the Rules and Reg-
ulations may be obtained on applica-
tion.
Office at Bank building on Merchant
street.

Antiseptic
Solution.
A law is in vogue in Paris
that this shall be used in
all barber shops.

In use at
THE SILENT BARBER SHOP.
Joseph Fernandez,
Proprietor, Arlington Block, Hotel St

THE HAWAIIAN HARDWARE CO
FORT ST., opp. Spreckels' Bank.

Just Received
Ex Cyrus Wakefield
A large Assortment of General Mer-
chandise consisting of
Cooking Stoves and Ranges,
Blue Flame Oil Stoves,
Victor Fire Proof Safes,
Aermotor Wind Mills,
Coal, Stockholm Tar, Colorado En-
gine, Cylinder, Electric Dynamo,
Car Box, U. S. Lard, Sperm and
Cocconut Oils.

Numerous other articles to make our
stock complete. Please call and examine
and get prices.

THE HAWAIIAN HARDWARE CO
FORT ST., opp. Spreckels' Bank.

PASSING OF SANS SOUCI
THE FAMOUS RESORT IS NO
MORE.

It Sheltered Robert Louis Stevenson
and Many Other Choice Spirits.
Something of Its Romantic History.

Sans Souci is no more. The heavenly
sunsets which Robert Louis Stevenson
loved and described are hung out every
evening over the Pacific before the
place just as they used to be and there
is the same view of the distant Wai-
anae hills as before, but the Bohemian
hospitality and the convivial fellowship
of Sans Souci souls is at an end. The
roof that sheltered Stevenson while he
wrote that marvel of his pen, "The
Master of Ballantyne" now encloses but
barren rooms in which the casual
stranger would detect no spirit but the
spirit of decay and neglect. The rooms
in which Rudolph Spreckels was wont
to entertain his friends in an atmos-
phere of material plenty and gastrono-
mic affluence are now but bare walls
and unkept floors and ceilings. Where
Paul Neumann was the life of an animat-
ed circle of wit and good fellowship
the spirit of emptiness has taken posses-
sion.

The afternoon sun still floods the
spacious lanais and the adjoining rooms
where J. D. Strong and his wife left so
many examples of their skillful brushes,
and the sunshine is still mellowed and
broken up by the shade of the gnarled
old hau tree and the banyan near the
door, but the lanais are deserted.

The modern, iconoclastic spirit of
utilitarianism has ousted Sans Souci
and is getting ready to introduce the
strenuous life.

Today George Lyeurgus the presiding
genius of the place for many years
past, takes his leave. A week ago the
last of the dinners, for which the place
is famous, was served. It was a fare-
well dinner at which many of those
who knew the place in its old estate
were present. It was a sumptuous rep-
ast gastronomically, and for the time
the old spirit of Sans Souci burned
brightly. Paul Neumann was there and
presided and wit and humor and fancy
had full play. Tomorrow the place
will be tenanted.

Sans Souci occupies what many con-
sider the finest point on the Waikiki
beach. Twenty years ago Allan Her-
bert established the place as the sea-
side annex of the Hawaiian hotel. It
was designed as an ideal seaside resort.
It was far out in the country then, and
the planting of trees and shrubs and
plants which have made the grounds
a rare botanical garden involving car-
rying water in buckets from the little
stream which landscape gardening has
since made one of the beauties of Ka-
piolani park. Many of the furnishings
were bought by Mrs. Herbert in Eu-
rope and were of a sumptuousness and
quality that still show through their
years of use and sometimes from the
doors and panels have left specimens of
their artistic work.

Members of the Spreckels family on
their visits to the Islands have made
Sans Souci their stopping place. It has
been the home of many choice spirits,
and the memory of a certain winter after-
noon and panels have left specimens of
their artistic work.

Members of the Spreckels family on
their visits to the Islands have made
Sans Souci their stopping place. It has
been the home of many choice spirits,
and the memory of a certain winter after-
noon and panels have left specimens of
their artistic work.

Members of the Spreckels family on
their visits to the Islands have made
Sans Souci their stopping place. It has
been the home of many choice spirits,
and the memory of a certain winter after-
noon and panels have left specimens of
their artistic work.

Members of the Spreckels family on
their visits to the Islands have made
Sans Souci their stopping place. It has
been the home of many choice spirits,
and the memory of a certain winter after-
noon and panels have left specimens of
their artistic work.

Members of the Spreckels family on
their visits to the Islands have made
Sans Souci their stopping place. It has
been the home of many choice spirits,
and the memory of a certain winter after-
noon and panels have left specimens of
their artistic work.

Members of the Spreckels family on
their visits to the Islands have made
Sans Souci their stopping place. It has
been the home of many choice spirits,
and the memory of a certain winter after-
noon and panels have left specimens of
their artistic work.

Members of the Spreckels family on
their visits to the Islands have made
Sans Souci their stopping place. It has
been the home of many choice spirits,
and the memory of a certain winter after-
noon and panels have left specimens of
their artistic work.

Members of the Spreckels family on
their visits to the Islands have made
Sans Souci their stopping place. It has
been the home of many choice spirits,
and the memory of a certain winter after-
noon and panels have left specimens of
their artistic work.

Members of the Spreckels family on
their visits to the Islands have made
Sans Souci their stopping place. It has
been the home of many choice spirits,
and the memory of a certain winter after-
noon and panels have left specimens of
their artistic work.

Members of the Spreckels family on
their visits to the Islands have made
Sans Souci their stopping place. It has
been the home of many choice spirits,
and the memory of a certain winter after-
noon and panels have left specimens of
their artistic work.

Members of the Spreckels family on
their visits to the Islands have made
Sans Souci their stopping place. It has
been the home of many choice spirits,
and the memory of a certain winter after-
noon and panels have left specimens of
their artistic work.

Members of the Spreckels family on
their visits to the Islands have made
Sans Souci their stopping place. It has
been the home of many choice spirits,
and the memory of a certain winter after-
noon and panels have left specimens of
their artistic work.

Members of the Spreckels family on
their visits to the Islands have made
Sans Souci their stopping place. It has
been the home of many choice spirits,
and the memory of a certain winter after-
noon and panels have left specimens of
their artistic work.

Members of the Spreckels family on
their visits to the Islands have made
Sans Souci their stopping place. It has
been the home of many choice spirits,
and the memory of a certain winter after-
noon and panels have left specimens of
their artistic work.

Members of the Spreckels family on
their visits to the Islands have made
Sans Souci their stopping place. It has
been the home of many choice spirits,
and the memory of a certain winter after-
noon and panels have left specimens of
their artistic work.

H. Hackfeld & Co.
(LIMITED.)
SOLE AGENTS FOR

Portland
Flouring
Mills
and
Sperry
Flour Co.

HAVE JUST RECEIVED A LARGE
QUANTITY OF THE FOLLOWING
POPULAR BRANDS:

Golden Gate Flour,
Superb Flour,
Olympic Flour,
Cascadia Flour,
O. and C. Flour,
Golden Lily Flour,
Portland Flour,
Dayton Flour,
Eldorado Flour.

For sale at Lowest
Prices.

H. HACKFELD & CO.
(LIMITED.)

THEO. H. DAVIES & CO.
(LIMITED.)

Merchants and Com-
mission Agents.

g to call the attention of the trade
to their complete line of

Hardware :: Crockery
Saddlery Etc.

Paints and Oils
General Plantation
Supplies.

A fine assortment of
Kitchen : Furnishings.

Gray Agate Ware
A Specialty.

Kaahumanu Street.

Hawaiian
Electric
Company.

The cleanest, brightest, safest and really
in the long run, the cheapest and best light
for use in the family residence, is the incan-
descent electric light. Safer, nothing could
be safer. A few days ago a prominent gen-
tleman of Honolulu came rushing down to
the office of the Electric Company and said:
"Give me figures for wiring my house, and I
want it done at once; no more lamps for me.
Last night a lamp tipped over and it came so
near setting fire to this house and burning my
children and I take no more risks."
This is the sentiment of quite a number in
the past few weeks, who have ordered their
houses fitted with the perfect light.
Just think it over and make up your mind
that you want the best and safest light; send
for the Hawaiian Electric Company and tell
them what you want.
We have a complete stock of everything in
its line and have just received a lot of the
very latest designs.

M. W. McChesney & Sons.
Wholesale Grocers and Dealers in
Leather and Shoe Findings.
Agents Honolulu Soap Works Company
and Honolulu Tannery.

"WHITE" SEWING
MACHINES

Are recommended the world over
for their beauty, durability and
ease of running.

A large assortment of styles always car-
ried in stock by

H. HACKFELD & CO., Ltd.
SOLE AGENTS FOR THE HAWAIIAN ISLANDS.

HONOLULU TOBACCO CO., Ltd.
.. IMPORTERS OF ..

Havana and Manila Cigars
Smokers' Articles
Fine Grades of Smoking Tobacco

Cor. Fort and Merchant Sts., Honolulu, H. I.

GOOD AIR. GOOD VIEW. GOOD HEALTH.

A special invitation to everybody to visit Honolulu's most deli-
cious residence site, PACIFIC HEIGHTS.

Via Maxima.
Kafulani Drive—aptly termed, the via Maxima or Grand Boule-
vard, and in itself an artistic piece of engineering—affords easy access
to all points, as also scenic and marine views of exquisite grandeur at
every turn.

Electric Railway.
Contracts have been let for material, and the work of construction
equipping and installation placed in the hands of a competent electrical
engineer to be fully completed by June 1st. Having an independent
power plant we are prepared to furnish electric power for lighting,
heating and other purposes, to our home builders at most reasonable
rates.

As Promised.
Our reservoirs are now completed and water mains laid so as to
supply each lot. Permits for making water connections will be granted
on application.
An inspection of the attractive homes now building, or the name
of purchaser of lots, will convince anyone that PACIFIC HEIGHTS
is the choicest and most select of all the residence sites of Honolulu.
For further information, prices, terms, etc., apply at office of

BRUCE, WARING & CO.
PROGRESS BLOCK

Parlor Furniture,
Rattan Chairs
A LARGE ASSORTMENT JUST TO HAND

EX R. P. RITHET

Coyne-Mehrten Furniture Company
PROGRESS BLOCK, FORT ST.

REDUCTION SALE
FOR TWO WEEKS
Commencing
MONDAY
August 21, 1899

Owing to a change in the firm
all goods in stock will be sold
during the coming two weeks
at greatly reduced prices.

A Rare Chance for Bargains
CHIYA & CO.
SUCCESSORS TO MURATA & CO.
Hotel Street, corner Nuuanu Street.

THE YOKOHAMA SPECIE BANK
LIMITED.
Subscribed Capital Yen 24,000,000
Paid Up Capital Yen 12,000,000
Reserve Fund Yen 7,500,000
HEAD OFFICE, YOKOHAMA.
The Bank buys and receives for col-
lection Bills of Exchange, issues Drafts
and Letters of Credit and transacts a
general banking business.
Agency Yokohama Specie Bank.
INTEREST ALLOWED.
On fixed deposits for 12 months, 4 per
cent per annum.
On fixed deposits for 6 months, 3½ per
cent per annum.
On fixed deposits for 3 months, 3 per
cent per annum.
Interest Allowed by the Head Office
at Yokohama.
On current deposits, 1 2-10 sen per day.
On fixed deposits for 12 months 5½ per
cent per annum.

New Republic Building, Honolulu H I
Fine Book and Commercial Printing
at the Star Office.
Note Heads, Bill Heads, Letter Heads
and all kinds of Job and Commercial
printing neatly and promptly executed
at the Star Office.

THE HAWAIIAN STAR

DAILY AND SEMI-WEEKLY

Published every afternoon (except Sunday) by The Hawaiian Star Newspaper Association, Ltd.

ALATAU T. ATKINSON, Editor
FRANK L. HOOGS, Business Manager

SUBSCRIPTION RATES:
Per Year (in advance).....\$ 8.00
Three Months (in advance)..... 2.00
Per Month (in advance)..... .75
Foreign (per year, in advance).... 12.00

SPECIAL ADVERTISING AGENTS
Chicago—James E. Colby, 309 Stock Exchange Building.
San Francisco—Dake's Advertising Agency, 64 Merchants' Exchange.

SEMI-WEEKLY SUBSCRIPTION:
Local Subscribers, per annum.....\$2.00
Foreign Subscribers, per annum... 3.00
(Strictly in Advance).

MONDAY, FEBRUARY 5, 1900.

The cars are clean and sweet again. It is to be hoped that they will be kept so for the future. The running of the cars will be a great convenience to most people, and a saving in pocket to many others. Hacks certainly are expensive.

Guarant is going one better than Marconi in the wireless telegraphy. He claims that he will be able to communicate from London to New York shortly. If he does, we certainly shall be able to communicate in like manner with San Francisco, and the costly cable will disappear.

The people of Maui are coming liberally forward with donations for the destitute, both in clothes and money. Kuaui has been very generous and the outer districts of Oahu come forward nobly to the assistance of the sufferers from plague and fire. Generosity is an Hawaiian characteristic, and one of the best lessons instilled by the race.

Samoa will improve now that the tripartite control has come to an end. The German portion of the group will be developed on German lines, Tutuila will advance on American lines. There will be no clash of authority and everything promises to run smoothly. There may be a few discontented chiefs and beach-combers, but it is doubtful if they will be able to make trouble.

George W. Stevens, the war correspondent who died of fever in Ladysmith, was a well known writer. He accompanied Kitchener's army to Khartoum, and his book, "With Kitchener to Khartoum" had a considerable sale here. It gave an extremely fine pen sketch of the Sirdar and his character, besides a brilliant account of the campaign. The fate of the war correspondent now is the fate of the soldier. He frequently falls either by bullet or disease.

The life on board quarantined steamers is beginning to tell upon the crews. It is very monotonous certainly and tantalizing to be close to the shore and unable to land. Then the Hawaiian crews are not accustomed to such long spells of sea life. The run is usually from a week to ten days and two or three days in Honolulu. Then there is not the life and hurry that there is when carrying large number of passengers. It is quite plain why the crews are becoming discontented.

Because the result in the Robertson case was fatal, is no reason to think that the "Pasteur Anti-pestique serum" will not check cases of plague. Quinine will not always save a fever patient, but it has saved very many fever patients. As the treatment has been successful elsewhere we ought to have every reason to hope that it may be so here. From the case of Mr. Robertson it may be deduced that the serum should be used early in the attack.

THE CAT AND THE MOUSE.

The plague plays with a community as a cat does with a mouse. It lulls us into a deceitful satisfaction and hope that the worst is over, and then it strikes in some unexpected spot. In December there was a let up for a week and every one breathed again, while quarantine regulations were suspended. But it swept down upon us on Christmas eve and cases and deaths began to crop up right through January the deaths raised from one to three a day, though here and there would be intervals which would be hailed with hope.

Then came the fire in Chinatown and it seemed as if that had done an immensity of good. Plague did not develop in the detention camps. A few sporadic cases appeared, notably that of the Chinaman Ng Gee on the Roth premises and Emily Bisling, a native woman, in a house by the pumping station at Kaimuki. The last death in January occurred on the 28, when Asagura, a Japanese, died at the detention camp. But Honolulu was free after the death of Mrs. Bisling, January 26.

Fortwith the city began to count. As each morning and each evening paper came out, every one eagerly scanned the columns to see how the plague went on. It stopped. Saturday passed, Sunday passed, and then the week sped on, with the same clean record. Men's faces brightened, business brightened, the stock exchange felt the influence and stock values went up. It seemed as if the pall of sadness and uncertainty which had been over us had been rent. The efforts of the Board of Health seemed on the point of being crowned with success, and when Saturday morning came safety and im-

munity were almost within our grasp. And then there was a suspicious case, not in the detention camps where it might have been supposed to have been incubating, but in a part of the town which was believed to be healthy and clean, and distant from the former plague center. By afternoon, the case was pronounced undoubtedly plague, and yesterday afternoon the man, a white man, died.

Is it any wonder that a depressed feeling came over so many: that they felt the cruelty of the reprieve of a week, to be once more brought face to face with the disease that many thought they had escaped from; that the lives and happiness and prosperity of one and all seemed at the arbitrary whim of a malignant power, that gives its victims respite, only to seize them again, as the cat does the crawling, half dead mouse.

But we must look at the matter in a more hopeful light. Unless there is a heavy crop of cases these few that spring up from time to time are only perhaps the last expiring efforts of the disease and it is by no means fastening upon the community with renewed vitality. The next few days will tell the tale.

The lesson we have before us is that however hopeful the prospect may appear there must be no relaxation of vigilance. The inspectors and sub-inspectors must be as exacting at the end of a week of respite, as they have been when two to three deaths a day were reported. The Board of Health must be as vigorous as ever in segregating those who come in contact with infected cases, and destroying property which has in any way become infected. No foolish kindness of disposition should take the place and blind the eyes of stern resolve to stamp out the plague no matter whom or what the orders of the Board may strike. It may strike any of us, for no class or nationality seems immune. But at the inevitable must be accepted.

NO WORK—NO FOOD.

The question of supporting people in idleness is one that must crop up at the present time. Early in the plague campaign The Star pointed out that there would be a number of people, who, when their term of quarantine was up, would have no means of earning a livelihood. The necessity of providing for these poor people was recognized and buildings were erected for the homeless and destitute. But it was never meant that there should be an eleemosynary camp provided where men and women could live at free quarters, and not do a stroke of work in return.

In discussing the question close on a month ago, The Star pointed out that these people should not be allowed to become mere pensioners of the government. That such a course was demoralizing and that once out of quarantine public work of some kind should be provided for those who could not find work for themselves. Road making was suggested as a proper work for the unemployed, and the Minister of Interior appealed to to designate some sections which could thus be pushed along.

It certainly is not the intention of this community to keep its Asiatic population in idleness. But this community can be very sure that its Asiatic section will be perfectly willing to live at free quarters if it gets the chance, and one cannot quite blame it if it is given the opportunity. If it can get rid of the hereditary curse "in the sweat of thy brow shalt thou eat bread," it is only aiming at what every one is more or less striving for.

But certainly no government should support any of its people in idleness. If it has to support its wards it should be on the principal of no work, no food. The government of India has had to deal with millions of destitute people and it has always been on the principle of giving work for which a food ration was the equivalent. In the United States, when there was so much trouble about unemployed, the plan which worked satisfactorily was that of giving employment on some relief work. In this way both San Francisco and Chicago added boulevards to the advantage of their citizens.

We are sadly in need of the road to the Pall being completed. Many of the streets need mending. Why should not the men in the relief camps be turned on this work. It is true that some of them have been cooks, some tailors, some store keepers, and that they are not used to the hard work on the roads. But when the unemployed on the mainland were rounded up, there were clerks, salesmen, college graduates, store keepers and others who had never done a day's manual work in their lives who were only too glad to take a pick and shovel to earn a meat ticket, which would stop the cravings of their hungry stomachs.

It will be found that once the men in the relief camps are put to work regularly, those who do not care for such labor will very soon find occupation for themselves in other lines. If there is not the necessity of hustling, there will be no hustle. The danger we have to avoid is a philanthropy which will degenerate into makewhich sympathy for people who may be perfectly willing to become pauperized.

It is all very well to have a labor bureau, the persons in charge are doing good work, but the men who are waiting for the labor bureau to find them something to do, should be handling pick and shovel and giving the people some return for the rice, salmon, etc., which they are given with three times a day. There will probably not be a large demand for "actors" for some time, but there is no reason why the thespians should not do some road making if it will probably be the most useful work they have ever attempted.

HOLLISTER DRUG CO.

The Old Reliable

Pure Drugs

AND

Disinfectants

OF EVERY DESCRIPTION

Dealers in

Photographic Material and Chemicals

Prescriptions Carefully Compounded

Fort Street,
Honolulu, H. I.

February 5, 1900.

Lamp Shades Made to Order

Having engaged the services of Miss E. Schnoor, late of San Francisco manufacturer of Artistic Lamp Shades of all kinds we are now prepared to take orders in this line and invite our customers to call and inspect samples of her work.

Electric Shades, Candle Shades and Lamp Shades made on short notice.

We carry a large stock of lamps and lamp fittings.

Have you tried our special Brand of Chimneys?

You are spending more time in your kitchen now than usual and you find that many improvements are needed. We have a complete stock of utensils including many novelties and labor saving devices.

Does your stove sult you? Are you burning too much wood?

Does it smoke? Does it bake well? Perhaps we can help you. No charge is made for advice.

We are sole agents for "Jewel" Stoves for wood or coal, "Gurney" Cleanable Refrigerators, "New Wickless" Blue Flame Oil Stoves.

The house furnishing goods department is on the second floor. You can take the safety elevator.

Store is open from 10 a. m. to 3 p. m. until the quarantine is raised.

After that we will be looking for business from 7 a. m. to 5:30 p. m.

W. W. DIMOND & CO., LIMITED.

Importer of Crockery, Glass and House Furnishing Goods

You Cannot Complain

This Christmas for want of a nice line of Men's Slippers to remember your friends with!

There is nothing a man appreciates or enjoys more than a good, easy-fitting Slipper; one that is built for perfect comfort, and we've got them, direct from Hanan's factory; perfect gems—without equals! All styles.

McInerny's Shoe Store

FORT STREET, HONOLULU.

FINE CUT GLASS

The very latest patterns direct from Eastern manufacturers

DINNER SETS, 100 PIECES

Just to hand by the "Martha Davis"

IRONSTONEWARE

By the "County of Merioneth"

Additions to our stock of Japanese ware, including screens, by the "Carmarthenshire"

The "W. H. Dimond," "Alden Besse" and "Australia" have brought us lines of regular supplies, which have been "short" in the market. Just opened ex "Alameda" a full line of English Cutlery

PACIFIC HARDWARE COMPANY, LIMITED.

Fort and Merchant Streets.

King and Bethel Streets.

Gentlemen, Attention!

A Complete Line of

Men's Furnishing Goods

THE VERY LATEST IN

Shirts, Collars, Cuffs, Bath Robes,

Pajamas, Socks, Underwear, Hats

Everything a man needs to supply, through the burnin' of his Laundry, at prices little more than the cost of the wash bill, can be secured from the immense assortment of New Goods at the store of

L. B. KERR & CO., LTD

Telephone 582

QUEEN STREET

the most stylish line of

golf capes and traveling rugs ever imported are now on view and for sale at N. S. SACHS DRY GOODS CO. passengers to the coast should prepare for a cold snap.

For Sale Cheap!

ON EASY TERMS

BUILDING LOTS AT PAWAA

This desirable property, bounded by Beretania, Punahou and King streets, on the town side of the McCully homestead, is now offered for sale. The extension of Young street passes through the land. An artesian well on the premises supplies the purest water. The breezes from Manoa valley render the locality extremely healthful. The property is on the line of cars, and the Rapid Transit cars will run through or by it.

There is no better or more refined neighborhood in Honolulu.

For terms, etc., apply to

F. WUNDENBERG,

At J. A. Magoon's office, next to P. O.

Or to J. LIGHTFOOT, on the adjoining premises.

It will pay you to enquire of your druggist for

"Sparklets"

the latest invention which will enable you to manufacture aerated waters in one minute at your own house

REMOVAL NOTICE!

On and after January 1st the Union Express Co. will have their office with the Evening Star, on King street, next to Chas. Hustace grocery.

ROOM TO LET.

A nicely furnished room in private family. At 657 Beretania street, two doors town side of Thomas Square.

NOTICE OF ASSESSMENT.

Notice is hereby given that the eighth assessment of ten (10) per cent on the capital stock of the Honolulu Rapid Transit and Land Company, will be due and payable to J. H. Fisher, Treasurer, at 411 Fort street (upstairs), Honolulu, on the 1st day of February inst. The shares upon which and assessment may remain unpaid after thirty days from said date, will be declared delinquent.

J. A. GILMAN, Secretary H. R. T. & L. Co. Honolulu, February 1, 1900.

For Sale

Forty acres, more or less, Kalea, Waikiki, a frontage on the beach of 1850 feet. For particulars apply at Room 4, Love Building.

BICYCLES FOUND.

A Cleveland Bicycle, No. 29 has been found, at corner Beretania and Nuuanu streets. Owner can procure same, at corner of Punchbowl and Miller streets, by proving property and paying all expenses.

JOHN GOUVEIA.

FOUND.

A bicycle opposite Beretania street bridge, makai St. Louis College. Owner can have same by proving property and paying for this ad.

L. F. PRESCOTT, Fort street near Hotel.

MUTUAL TELEPHONE CO., LTD.

At the annual meeting of the above Company, held this day the following officers were duly elected.

J. B. Atherton.....President
Cecil Brown.....Vice President
Godfrey Brown.....Treasurer
H. E. McIntyre.....Secretary
J. M. Dowsett.....Auditor
who also constitute the Board of Directors.

H. E. McIntyre, Secretary.

Honolulu, January 31, 1900.

KONA SUGAR CO., LTD.

Notice is hereby given that assessment No. 7 of 10 per cent on the assessable stock of Kona Sugar Co., Ltd., is due and payable February 2nd, 1900.

WANTED.

An experienced Seamstress; one accustomed to cutting. Apply at 1298 King street.

FOR SALE.

Departure Bay Coal, just received and for sale.

ALLEN & ROBINSON, Telephone 195.

KAMALO SUGAR CO.

Assessment No. 5 of 5 per cent on the assessable stock of the Kamalo Sugar Company Ltd., will be due and payable on February 1, 1900, at my office, Merchant street.

FRANK HUSTACE, Treasurer.

Fine Job Printing, Star Office.

A THIEF IN THE PILLORY

PUNISHMENT AT DRILL SHED CAMP.

A Jap Dressed in Chinese Clothing and Stood on a Box with "Thief" Painted on His Apparel.

A Japanese thief was caught yesterday in the drill shed detention camp and was treated to a punishment that was a powerful object lesson to the rest. The Jap was dressed in Chinese clothes, and made to stand on a box, with the word thief painted on his back in his own language. His own countrymen seemed to approve of the proceeding.

The thief had stolen a suit of clothes. After a lot of searching he was caught and the superintendent got a confession from him. He was the inventor of the means of punishment. He secured a suit of Chinese clothes and ordered the man to put them on. This was about as objectionable a thing as a Japanese could have been asked to do, and the prisoner resisted at first. He soon had the suit on, however, and then the superintendent got the box and made him stand on it, securing a Japanese painter to write "thief" on the clothes so that all could see it. The man was kept on the box all day yesterday, in the most conspicuous part of the camp. Once or twice he sat down but the guard was not very gentle in the way that they compelled him to stand again, and he soon got tired of trying to rest.

When the Japanese minister came to conduct the Sunday services he interceded for the thief, but without success. The order was adhered to that he must be kept there constantly. It is thought that this will put an end to thieving in the camp. The minister had a large and interesting congregation for his address, which evidently met with the approval of his auditors, as they loudly applauded when he had done.

WORLD GOLD PRODUCTION

BERLIN "ECONOMIST" REVIEWS THE SITUATION.

There is No Gold Deficiency—More Gold is Now Produced Than Ever Before in World's History.

From an article in the International Economist, published at Berlin, under the title "The production of precious metals", Consul-General Gunther gives the following translation.

The year 1899 would have been a record breaker in the production of gold had it not been for conditions in South Africa, but in any event it can be estimated that the production will amount to 440,000 kilograms (968,000 pounds).

The Witwatersrand will probably, after peace has been restored, produce 5,000,000 ounces and the other districts in Africa another 250,000 ounces, or approximately double the production of 1897. The United States, Australia, and Canada also contribute an increase, so that the twentieth century will commence with a yearly production of about 460,000 kilograms (1,014,116 pounds) at a value of 1,283,990,000 marks (\$305,364,000), which means that the output of gold alone will exceed by \$19,000,000 the average production of gold and silver combined in the years between 1866 and 1870, the very years when the harmony of the open mints of the Latin Union had not been disturbed by any policy of demonetization. The fallacy of the insufficiency of gold, of the appreciation of the value of gold, and corresponding decrease of other values, has therefore to be consigned to the lumber room of bimetallic arguments.

Nobody who has eyes to see and who notes the figures will believe that the high price of money represents an enhancement of the price of gold in consequence of a gold deficiency. A comparison with more remote periods is even more striking. The world's total production since 1871—the date when Germany determined to abandon its silver basis—amounts to 6,987,283 kilograms (15,420,052 pounds) in and including 1899. From the discovery of America in 1492 up to 1871, there were produced 8,658,175 kilograms (19,087,822 pounds). Within the last twenty-eight years the world's production was therefore equal to two-thirds of the production of nearly four centuries preceding. Nevertheless, from 1492 to 1871 no gold existed of an insufficiently in the supply of gold, while from 1871 to 1898, in a period which produced in twenty-eight years two-thirds of what was produced in three hundred and seventy-nine years, this year has been growing constantly. From 1492 to 1871, the annual average production was 22,900 kilograms (50,485 pounds). During the years of fear of an insufficient supply, the annual production of gold was 210,000 kilograms (462,966 pounds.)

Dated Honolulu January 25, 00.

NOTICE.

Notice is hereby given that at the Annual meeting of the Hawaiian Agricultural Co., held January 25, 1900, the following officers were elected to serve for the ensuing year, viz:

Chas. M. Cooke.....President
S. C. Allen.....Vice-President
Geo. H. Robertson.....Treasurer
E. F. Bishop.....Secretary
T. R. Robinson.....Auditor
P. C. Jones.....Director
H. Waterhouse.....Director
T. May.....Director
E. F. BISHOP, Secretary.

Dated Honolulu, H. I., Feb. 3, 1900.

NOTICE OF ELECTION OF OFFICERS.

At a meeting of the shareholders of the Enterprise Mill Co. Limited, held this day at the office of the Company in Honolulu, the following persons were elected to serve as officers of the company for the ensuing year, viz:

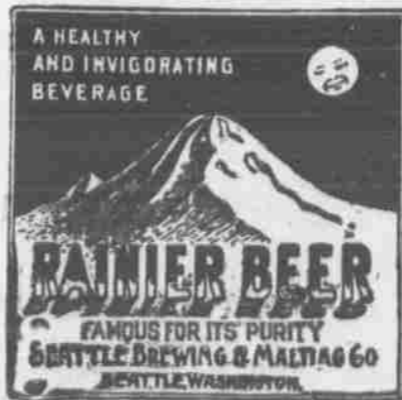
Peter High.....President
W. J. Lowrie.....Vice-President
W. P. Barry.....Secretary and Treasurer
W. F. Allen.....Auditor

The same officers constitute the Board of Directors of the Company.

W. P. BARRY, Secretary.

Dated Honolulu, H. I., Feb. 3, 1900.

A Favorite with Everyone!



Its ideal for home use—a trial convinces.

INTERFERES WITH THE SHOW.

James G. Jardine, Ontario commissioner to the Paris exposition, returned to the city from Ottawa on Saturday. He says that, owing to the large extra expenses incurred by the government in connection with the sending of the two Canadian contingents to the exposition, the proposal to have a portion of Canadian cattle and horses at the exposition will probably be refused, as the government is anxious to avoid, as far as possible, any extra expenditure in connection with the exposition. However, a few representative animals from the various provinces may be sent.

BELGIAN ELECTORATE.

The Belgian electoral bill, which was recently passed by the chamber at Brussels, for the first time in parliamentary history introduces the system of proportional representation. Under this system Brussels, where there were at the last elections 86,000 Roman Catholic voters, 30,000 liberals, 50,000 radicals and 70,000 socialists, would return seven Roman Catholic deputies, six liberals and five socialists, while now all the members for Brussels belong to the Roman Catholic or clerical party. In future election by a clear majority will be possible only in the case of by-elections, but even in such cases the new reform bill provides that in every general election the voters should elect on the proportional system not only the members for the vacant seats, but also a number of substitutes, not exceeding one-half of the elected members, to take places that may be vacated before the next general election occurs. The result of the new law, as described by the clerical leader M. Woeste, will be to break up the clerical party, which has ruled Belgium for eighteen years, and to transfer the center of political power to the liberal party, but M. Smet de Nayer, the prime minister, pointed out that the only alternatives were either revolution or "one or one vote", either of which would lead to socialism.

A NERVE TONIC.

The women who take sand for indigestion are putting it to a new use, before sand has been regarded exclusively as a nerve tonic—Chicago Record.

Note Heads, Bill Heads, Statements and Fine Commercial Printing at the Star Office.

Commissioner's Sale of Real and Personal PROPERTY.

Pursuant to an order made by Honorable A. Ferry, First Judge of the Circuit Court of the First Judicial Circuit, filed the 31st day of January, A. D. 1900, I am directed to sell at public auction, subject to confirmation by the Circuit court,

ON SATURDAY, MARCH 3, A. D. 1900, At 12 o'clock noon of that day, all the right, title and interest of Genevieve Dowsett, Marion C. Dowsett, being an undivided one-twelfth interest each of said minors, and also the one-twelfth interest of Madeline C. K. Dowsett and Annie H. K. Dowsett, minors, in estate of James I. Dowsett deceased, in and to all those certain pieces and parcels of land situate on the Island of Oahu, Maui, Hawaii and Molokai, and more particularly described as follows:

1. The land situated in Nuuanu Valley, Island of Oahu, described in deed from John H. Wood to the Honolulu Dairy Company, dated April 30th, 1892, and recorded in the Registry of Conveyances in Honolulu in Liber 136 at pages 174 to 177, containing an area of 27 1/2 acres, more or less.

2. The land situated at Kapalama, in Honolulu, Island of Oahu, known as the Akepe lot, being a part of Royal Patent No. 5572, and described in deed made by Kanae and J. W. Akepe to James I. Dowsett, dated the 3rd day of February, 1882, and recorded in Liber 72 on pages 210 to 212. Containing an area of 1.13 acres.

3. The land situated at Apua, in Honolulu, described in deed from A. Francis Judd to David Kahanu, dated March 21st, 1870, recorded in Liber 29 on pages 424 and 425, and the land described in the deed from John O. Dominis and E. Mahini, Administrators of the estate of Josia Kaaukai, to David Kahanu, dated June 7th, 1866, and recorded in Liber 21 on pages 315 and 316, and in a deed from Kahanu to Kahanu, Kih, her husband, and Kaluahine to David Kahanu, dated September 14th, 1866, and recorded in Liber 22 on pages 106 and 107.

4. The land situated at Kakaia in Honolulu, described in the deed from Moekolohe and Nainoaheua to David Kahanu, dated March 30th, 1880, and recorded in Liber 63 on pages 416 and 418. Containing an area of 1.5 of an acre.

5. The land at Aala on Liliha street, in Honolulu, described in the deed from Nika and Puniakala, his wife, and Keaka to David Kahanu, dated October 9th, 1869, and recorded in Liber 29 on pages 40 and 41; also the land described in the deed from John Thomas Waterhouse and Eleanor, his wife, to David Kahanu, dated January 25th, 1878, and recorded in Liber 56 on pages 83 and 84; also land described in the deed from Kia Nahaolua and Nahahe to David Kahanu, dated January 10th, 1875, and recorded in Liber 49 on pages 385 and 386. Containing an area of 3.03 acres.

6. The land situate on King street, in Honolulu, described in the deed from F. M. Hatch to James I. Dowsett, dated October 18th, 1888, and recorded in Liber 115 on pages 68 and 69. Containing an area of 17-100 acres.

7. The land situate at Kapahala, Kapalama, in Honolulu, being a portion of Apana 1, Royal Patent 2256, L. C. A. 2440B, described in the deed from Thomas Carry and Mary, his wife, to James I. Dowsett dated June 14th, 1887, and recorded in Liber 106 on pages 192 and 194. Containing an area of 1900 square feet.

8. The one undivided half of the lands situated in Honolulu, known as the land of Kahaehao and Kanoioia, L. C. A. 153 to Wm. Sumner, dated March 5th, 1849.

9. The land situated at Puhawai, Waianae, Island of Oahu, described in Royal Patent 1073, L. C. A. 7485, and in the deed of Pina and Kinikaku to James I. Dowsett, dated April 30th, 1888, and recorded in Liber 110 on page 288. Containing an area of 6.74 acre.

10. The land situated on Pearl River Bay near Honolulu known as Puuloa, containing an area of 2244 acres, and described by metes and bounds in the deed from Kekanohi to Isaac Montgomery, dated September 17th, 1849, and recorded in Liber 7th, 1849, and recorded in Liber 7th, 1849.

11. The land situated at Honolulu, at Ewa, on the Island of Oahu, comprising 86 acres, more or less, now under lease to Sing Chong & Co.

12. The land situated at Kapalama, Island of Oahu, described in Royal Patent 2256 issued to John Meek, and comprising 9 5/8-100 acres; and also the land situated at the same place part of the II of Kahaehao, described in L. C. A. 8515, Apana 4, Part 1, and comprising 1 7/8-1000 acres, and also, which said two last mentioned parcels of land are now held under lease dated September 15, 1896 by Y. Ah In.

13. The land situated on the Island of Maui, known as Rose Ranch, comprising all the lands described in certain Royal Patents and deeds as follows: All the land described in the deed from Parker N. Makee and others to James I. Dowsett, dated March 30th, 1886, and recorded in Liber 101 on pages 200 et seq.; also the leasehold estates in the following lands: Lease of the Hawaiian Government of the Ahupuaa of Kanaia to Catherine N. Makee, Number 292, dated February 9th, 1861. Lease from John M. Kapena to James Makee dated December 22nd, 1876, and recorded in Liber 47 on page 498. Containing an area of 21,650 acres.

14. The land known as Kaulu situate at Ewa, Island of Oahu, being part of Hoaeae. Containing an area of about one acre.

15. The land with an orange grove situated at Hana, Island of Maui. Known as Dowsett's land. Containing an area of 1 1/2 acres.

16. The taro land situated on the Island of Molokai described in Royal Patent 2330.

17. The land situated at Waipio on the Island of Hawaii known as Dowsett's land.

18. The land situated at Kapulona in Honokaa, Island of Hawaii, formerly leased to J. M. Horner & Sons and now occupied under said lease by the Pacific Sugar Mill. Containing an area of 17 1/2 acres.

Also the leasehold estates in the following lands: The land of Halaawa, the land of Kahauiki, the land of Leliehua, the land of Mikikua, the land of Nankuli and the land of Aiea, all situated on the Island of Oahu.

Also all the live stock belonging to the Estate of James I. Dowsett, deceased, comprising 6,000 head of cattle, more or less, 60 head of oxen and bulls, and 212 head of horse and mules.

Also all and singular the lands, chattels, choses in action, and properties, real and personal, belonging to the Estate of James I. Dowsett, deceased, or to which said Estate may be entitled, whether herein enumerated and specified or not.

Terms of sale are cash in U. S. Gold. Dead at the expense of purchaser. For further particulars apply to PAUL NEUMANN, ESQ., or GEORGE LUCAS, Commissioner.

HAIR Wealth of hair is wealth indeed, especially to a woman.



Every other physical attraction is secondary to it.

WEALTH If your hair is too thin or losing its luster, get—

Ayer's Hair Vigor

Growth becomes vigorous and all dandruff is removed.

It always restores color to gray or faded hair. Retain your youth; don't look old before your time.

Dr. Ayer's Sarsaparilla purifies the blood and clears the complexion.

Prepared by Dr. J. C. Ayer & Co., Lowell, Mass., U. S. A.

PRESIDENT LOUBET'S MEDAL.
President Loubet has managed to hold office until now without his medal. In a few days from now he will possess this important certificate of his election, as it is being struck at the mint. On one side there is the President's head in profile, with the words, "Emile Loubet, President de la Republique Francaise," and on the other a figure of the Republic standing before the election ballot box dropping M. Loubet's name into it, with the inscription "Elu par L'Assemblée Nationale le 18 Février, 1899. Every Deputy and Senator will receive one of these medals.—London Chronicle.

MARK HANNA.
Democrats have been saying for some time that Hanna would be obliged to go but it looks as if Jones would be the first to walk the plank.—Chicago Record.

It is announced that Mark Hanna, at the earnest solicitation of the president, will manage the next campaign. Perhaps we may hear presently that Mr. McKinley, at the solicitation of Mark Hanna, will again be a candidate.—Chicago Record.

Senator Hanna appeals to popular sympathy in his protest against the newspaper criticism of a man in his exalted position. The newspapers, says he, "forget that I am a member of the United States Senate, a position which should carry dignity with it." Hereafter let every one remember that Mr. Hanna is dignified.—Springfield Republican.

Fine Book and Commercial Printing at the Star Office.

way of like width the same rule shall apply.

AIR SPACE BETWEEN BUILDINGS.

2. There shall be a clear air space of ten feet between all buildings except those fronting on a street. No building except such as fronts on a street shall be built within five feet of a boundary line. The word "buildings" in this paragraph shall be construed to mean and include sheds, lean-tos, privies, and all other structures.

LIGHT AND VENTILATION OF DWELLINGS.

3. Each and every room intended or used for human habitation shall be provided with at least eight square feet of window area having unobstructed access into the open air for each 100 square feet of floor space in said room, and free access shall at all times be had to the same by the occupants of the room; and at least one-half of such window space shall be movable and available for ventilation.

AIR SPACE UNDER BUILDINGS.

4. Every building shall have on an average at least twenty inches of clear space for the circulation of air between the floor timbers and the ground, and shall have sufficient openings for ventilation in the outer walls to admit a free circulation of air; but, in case this air space cannot be secured without reaching "ground water level" then there shall be no air space, but the floor shall be of concrete or masonry.

YARDS, AREAS, COURTS, ETC.

5. Yards, areas, courts, alleyways and other open spaces within or between buildings, where water is used for washing of any kind, shall be properly graded and cemented, or paved so as to be water proof, and drained into trapped drains properly connected with sewer or cesspool, and no permanent wooden floor or grating shall be maintained over the same.

WATER TIGHT FLOORS.

6. All houses, structures, rooms or parts thereof, in which water is used, or intended to be used, in such quantity as to render the floor or floors thereof constantly damp, shall have such floor or floors made absolutely waterproof, with proper drainage into trapped leaders conveying the water away into cesspool or sewer; and the water proofing of all such floors shall be done in a manner satisfactory to the Board of Health.

7. No building or structure shall be used as a residence or place for human habitation or abode which is situated upon land where there is standing water within eighteen inches of the surface of the ground; nor shall any building or structure be so used that is placed on land that has been made by filling in with refuse or garbage, or that is declared by the Board of Health to be of foul or corrupt material.

REGARDING PRIVY-VAULTS AND CESSPOOLS.

8. No privy-vault, sink or cesspool in Honolulu, shall hereafter be located or constructed within fifty feet of any stream, lake, pond, well or spring of water, nor within two feet of the line of any lot; nor shall it be made more than eighteen or less than six feet deep or placed in such a position that it is not easily accessible for emptying and cleaning.

9. When deemed necessary by the Board of Health, the sides and bottom of any privy-vault, sink or cesspool, shall be made either wholly or in part water tight, so as to prevent any saturation of the ground about the said vault, sink or cesspool, and shall be provided with suitable ventilating arrangement.

10. No structure or cover shall be put upon or over any privy-vault, sink or cesspool, until it has been inspected by the proper Agent of the Board of Health and approved as meeting the requirements of these regulations and of public health.

11. Any privy-vault, sink or cesspool, already constructed in Honolulu which has become a nuisance, or in any way dangerous to life or detrimental to health, shall be removed, reconstructed, or altered to meet the requirements of these regulations and of public health, as directed by the Board of Health or its Agent.

12. The Board of Health or its Agents may cause the emptying or disinfecting of any privy-vault, sink or cesspool that may be deemed offensive, or when required by public health, at the expense of the owner or occupant of the premises.

13. Within thirty days after the public sewer system is put into operation the use of privy vaults and cesspools shall be entirely discontinued within the limits of such sewer system, and all privies shall be removed, except in so far as permission may be granted by the Board of Health to transform the same into approved water closets connected with the sewer system.

14. No privy vault or cesspool shall be excavated or maintained within ten feet from any dwelling-house or inhabited building or cook-house or place where cooking is done.

15. No privy vault or cesspool shall be maintained or excavated in any place where for any reason free and unimpeded access may not be had to the same by an excavator cart.

16. No privy shall be built or maintained so as to entirely cover the cesspool or vault under the same, but the cesspool or vault shall project out on one side beyond the superstructure in such a manner as to allow the inspection and removal of the contents of said cesspool or vault. The contents of any privy vault or cesspool shall not be allowed to rise within eighteen inches of the top of the same or to such a height as to flow out onto the surface of the ground.

17. No cesspool or privy vault shall be built or maintained in any location except the same shall have a substantial water-tight curb which shall retain the earth without and the contents of the cesspool or vault within, and shall be provided with a substantial water-tight cover, having a small, movable lid in the same to facilitate examination and removal of the contents.

18. All cesspools or privy vaults shall have four-inch cast-iron vent pipes with caulked lead joints, or galvanized iron pipes, extending not less than twelve feet into the open air, and if within twenty feet of an inhabited building the top of such vent pipes shall extend above the roof of the highest building within a distance of twenty feet of the same. All such vent pipes shall run as direct as possible. Every privy shall have proper seats with hinged lids to cover the opening of same, which shall be kept closed when not in use.

19. All connections to cesspools or privy vaults shall be made with cast iron, lead or vitrified, sewer pipe. All urinals shall be connected to cesspools, vaults or sewer by trapped waste pipes.

20. All cesspools shall be properly cleaned out at once, and hereafter at least once every four months, and shall be thoroughly disinfected at least once each week with such disinfectants as the Board of Health shall direct; all such cleaning and disinfecting to be at the expense of the owner of the property.

21. All waste, soil, sewer or drain pipes shall be of cast iron, lead or vitrified clay. If of iron or lead the joints shall be caulked with molten lead; if of vitrified clay, they shall have tight cement joints all joints to be smooth in the inside; open drains may be of water tight masonry.

22. All cesspools or privy vaults when abandoned and the use thereof discontinued shall be at once entirely emptied of liquid and solid contents, and shall be disinfected and filled with earth, sand, ashes, or other such clean materials; and the wooden curbing about the same removed to a depth of at least four feet below the surface of the ground. In no case shall refuse, garbage or any unclean material be used in filling such privy vault or cesspool.

23. All buildings and premises which do not conform in every respect to the requirements of the foregoing regulations are hereby declared nuisances and dangerous to the public health.

REGARDING GARBAGE.

24. Garbage will be carried away free of charge by the Board of Health carts within these limits, i. e.: School street mauka; Alapai streeteast; Liliha street west; and seaward by the water front.

25. It shall be the duty of each house owner, householder, lessee, or tenant who is a housekeeper, within the district in which the free removal of garbage is provided, to supply, and keep ready for use suitable container or containers, of not more than eighteen cubic feet capacity and provided with tight covers, for the reception of all garbage, and to cause the same to be set out in such places and at such times as the Board of Health shall direct for the convenience of garbage collectors. All empty containers shall be kept clean and thoroughly disinfected.

26. Yard scrapings, tree cuttings and stable manure will not be removed by the Board of Health carts.

27. All garbage and refuse which is subject to decay shall be collected by householder or occupiers of dwellings each day; and if within the limits named in section 24 the same shall be placed in containers as provided in section 25 for collection; and if beyond said limits the same shall be burnt or removed.

28. No garbage shall be used for filling house lots or other tracts of land.

29. No garbage shall be deposited in any place not authorized by the Board of Health.

Extract from Penal Code:

"Section 874. Every person who shall violate any regulation of the Board of Health, after the same shall have been published, as provided in the last preceding section, shall be fined not exceeding one hundred dollars."

C. B. WOOD, President Board of Health

The 1900

Columbia, Rambler and Hartford Bicycles seem to be just about the right thing. We have had supplies of these wheels and will have a big stock by the Australia in two weeks. Most of the chainless Columbias are sold to arrive there is such a demand for this wheel. They are 4 pounds lighter this year and are fitted with the "Special Tropical Tire" which makes them a perfect mount for these Islands. The Columbia Chainless weighs less than 25 pounds and we guarantee it for any rider weighing up to 300 pounds. Our "Hartford" and "Rambler" chain wheels are beauties, call and see the samples. We have a complete repair shop as ever, though it is not conveniently located at present. During this year we expect to get back to the old corner, where a fine modern department is to be fitted up in our new store. At present we sell, rent and repair wheels in the brick building on the upper side of King Street opposite to where our old stand was and are able to do the best repair work done in town, rent the well known Columbia Chainless, and sell any model of Columbia, Rambler, or Hartford for cash or on easy installments. We want your custom.

E. O. Hall & Son, Ltd

Vapo-Cresolene Cures while you Sleep

Whooping Cough, Asthma, Croup, Catarrh, Colds.

Cresolene when vaporized in the sick room will give immediate relief. Its curative powers are wonderful, at the same time preventing the spread of contagious diseases by acting as a powerful disinfectant, harmless to the youngest child. Sold by druggists. Valuable booklet free.

HOLLISTER DRUG CO., HONOLULU, H. I. Agents.

... TWO RETAIL STORES ...
Corner Fort and King Streets and Waverley Block, Bethel Street

HENRY MAY & CO., LTD.

SUCCESSORS TO
J. T. WATERHOUSE, HENRY MAY & CO.,
H. E. MCINTYRE & BRO.

Wholesale and Retail Grocers

Tea Dealers and Coffee Merchants

Retail Stores: { Corner Fort and King Streets, Waverley Block, Bethel Street.
Wholesale Department, Bethel Street.
P. O. Box 386 Telephone: Fort Street, 22 and 92 Bethel Street, 29 and 949

NOTICE

Notice is hereby given that MESSRS. W. G. IRWIN & CO., LTD., have this day been appointed RESIDENT AGENTS for the Hawaiian Islands of the following insurance companies

ROYAL INSURANCE COMPANY, of LIVERPOOL.
ALLIANCE ASSURANCE COMPANY of LONDON.
SCOTTISH UNION AND NATIONAL INSURANCE COMPANY of EDINBURGH.
ALLIANCE MARINE AND GENERAL ASSURANCE COMPANY of LONDON.

MR. JOHN S. WALKER will continue to be associated with the business of the above named companies.

R. C. MEDCRAFT, General Agent and Attorney.

W. G. IRWIN & CO. (Limited.)

—AGENTS FOR—

Western Sugar Refining Co. of San Francisco, Cal.
Baldwin Locomotive Works of Philadelphia, Penn.
Newell Universal Mill Co., (National Cane Shredder.) New York, U. S. A.
N. Ohlandt & Co.'s Chemical Fertilizers.
Alex. Cross & Son's High Grade Fertilizers for Cane and Coffee.
Reed's Steam Pipe Cars.

Also Offer for Sale

Paraffine Paint Co.'s P. & B. Paints and Papers.
Luceol and Linseed Oils Raw and Boiled.
Indurine (a cold water paint) in White and Colors.
Filter Press Cloths, Cement, Limes and Bricks.

WILDER & COMPANY

Established in 1872.

Estate S. G. Wilder W. C. Wilder

IMPORTERS AND DEALERS IN LUMBER AND COAL

Building Materials —SUCH AS— DOORS, SASH, BLINDS, Builders' Hardware Paints, Oils, Glass, Wall Paper, Etc.

Cor. Fort and Queen Streets HONOLULU, H. I.

THE CLUB STABLES, LTD.

Fort Street, Near Hotel. Tel. 47.

Livery Boarding and Sales Stables. Prompt Service. Stylish Turnouts Safe Drivers.

We are especially equipped to cater to your trade. Fair dealing and good service is what we depend upon to get it.

Hack stand—Bell Tower, Union Street, Telephone No. 319. Hacks Nos. 92, 65, 81, 125, and 180.

C. H. BELLINA, Manager.

DR. W. J. GALBRAITH,

Office and Residence Hawaiian Hotel

Practice Limited to Surgery and Gynecology.

Fine Job Printing, Star Office.

HOLIDAY

Toys Toys Toys books books books

For sale by

HAWAIIAN NEWS CO. (LIMITED.)

149 HERRMANT STREET. Near the Postoffice.

CASTLE & COOKE, LIMITED

Life and Fire Insurance Agents

AGENTS FOR NEW ENGLAND MUTUAL LIFE INSURANCE CO. OF BOSTON.

ETNA FIRE INSURANCE CO.

OF HARTFORD, CONN.

P. O. Box 912. Telephone 221.

H. HAMANO, IMPORTER AND DEALERS IN Japanese Provisions AND General Merchandise

509 Beretania Street Opposite Queen's Hospital.

OYSTER COCKTAILS UP TO DATE



ELITE ICE CREAM PARLORS

Hawaiian Curios
Kapa, Calabashes, Leds, Native Hata, Hula Skirts, Nihau Mats, Fana, Shells, Seeds, etc. Home-made Poi constantly on hand. Mending done neatly and Cut Flowers furnished by THE WOMAN'S EXCHANGE
Cor. Hotel and Union Streets, Honolulu Telephone 659.

Safe! Safes!!

The MACNEALE & URBAN CO.'S SAFE were pronounced by the Expert Safe Opener to have stood the

Fire Test...

Better Than Any Safe on the Market

Contents in the Safes were in a Perfect State of Preservation

E. C. WINSTON, Agent, S. W. LEDERER, Selling Agent

IXL, Cor. Nuuanu and King Sts.

Oriental Goods

NEW IMPORTATION OF Silk Goods, in the piece; Silk Handkerchiefs; Silk Shawls; Decorated Flower Pots; New Porcelain Cups and Saucers; Tea and Dinner Sets; Carved Ivory; Rattan Chairs; Carved Sandalwood Boxes.

These Goods are the Handsomest in all Honolulu

WING WO CHAN & CO. 210-212 Nuuanu Street.

BY AUTHORITY

SANITARY REGULATIONS OF THE BOARD OF HEALTH FOR HONOLULU DISTRICT.

The following regulations shall apply to, and be in force within, the portion of Honolulu described as follows: Beginning at the seashore, at the west corner of Loko Kuwili 2 near the east corner of the Kapalama Detention Camp and running mauka, along the Waipilopilo road to the old line of the Oahu Railway, thence along Oahu Railway to the boundary of Maunakea, thence mauka, along the Mokauea boundary and the Kahlili road to the survey station at the lower end of Mokauea ridge, thence in a straight line to the survey station above the north end of Wylie street, thence along the central line of Wylie street to Nuuanu street, thence in a straight line to the forks of the Manoa road, thence in a straight line to the corner of the Waiatale road and the Kapahulu road, thence down the Kapahulu road and along Campbell Avenue to Monsarrat road, and thence in a direct line over the summit of Diamond Head to the seashore at high water line, and thence to the initial point.

REGARDING BUILDINGS AND YARDS.

RAIN WATER.

1. Where the space between the buildings is less than fifteen feet, the water from the roofs of the buildings on the sides of such space shall be conducted in water tight leaders and made to discharge into suitable drains leading into street or alley gutters; and if the building abuts on an alley or road-

Who will do it?

You are going to have your house Papered, Painted or Decorated. Who's going to do it? No one does or can do better work than we. Investigation proves that few do as good. All we ask for it is a fair price—not high, not low. Either extreme is dangerous. Any one who gives us work gets the best going at the fairest and squarest price.

STERLING, THE PAINTER
Office: Union Square, opp. Bell Tower

SEE WO Restaurant

105 1/2 HOTEL STREET

Cigars, Tobacco, Gold Drinks and Notions

Meals, 25 cents. Per Week, \$4.50.

OPEN DAY AND NIGHT

A GOOD THING 4 U 2 C.

Firewood, Coal, Sand.

Ohiia, Alagaroba and Pine Firewood, cut and split ready for the stove; Stove, Steam and Blacksmith's Coal, White and Black Sand at lowest prices delivered to any part of the city

Hustace & Co.
QUEEN STREET. Telephone 414

NEW SHIPMENT.

Silk Goods

—ALSO—

Grass Cloth, Handkerchiefs, Doylies, Table Covers.

SILK SHIRTS, SILK PJAMAS, ETC.

HANDSOME CARPETS FOR HALLS AND STAIRS.

JAPANESE RUGS—VERY PRETTY PATTERNS.

A large stock on hand to select from, at prices that will surprise you!

S. OZAKI.
WAVERLEY BLOCK, HOT. L ST.

Waikiki Inn

One Room to Rent
\$12 per week

ROOM, BOARD AND BATHING....

We have had the entire premises thoroughly cleaned and fumigated and the Pacific Ocean furnishes plenty of bathing water.

Alexander & Baldwin,

Sugar Factors

—AND—

Commission Merchants.

AGENTS FOR THE CALIFORNIA & ORIENTAL STEAMSHIP CO.

UDD BUILDING, FORT STREET, HONOLULU

CASTLE & COOKE, LIMITED
Commission Merchants.

SUGAR FACTORS.
—AGENTS FOR—

The Ewa Plantation Co.
The Waialua Agricultural Co., Ltd
The Kohala Sugar Co.
The Waimea Sugar Mill Co.
The Koloa Agricultural Co.
The Fulton Iron Works, St. Louis, Missouri.
Standard Oil Co.
George F. Blake Steam Pumps.
Weston's Centrifugals.
The New England Mutual Life Insurance Co., of Boston.
The Aetna Fire Insurance Co., of Hartford, Conn.
The Alliance Assurance Co., of London.

POWER OF ATTORNEY.

During my absence from the Islands, Samuel Dwight will act for me in all business matters under full power of attorney.

W. H. CUMMINGS,
Honolulu, November 1, 1899.

WILDER'S STEAMSHIP CO., LTD

TIME TABLE S. S. KINAU,

FREEMAN, Master.
MOLOKAI, MAUI, HAWAII.

Change in sailing of Str. "Kinau"

On and after Tuesday, Nov. 6, the steamer KINAU will sail from Honolulu on Tuesdays at 12 noon, for Kaula, Lahaina, Maalaea Bay, Kihai, Makana, Kawaihae, Mahukona, Laupahoehoe and Hilo.

Returning, will sail from Hilo on Fridays at 2 p. m. for above named ports, arriving at Honolulu on Saturdays.

Passengers and freight will be taken for Makana, Mahukona, Kawaihae, Hilo, Hakalau, Honoumou, Papekou and Pepeekeo.

Passengers and PACKAGES ONLY will be taken for Kaula, Lahaina, Maalaea Bay, Kihai and Laupahoehoe.

S. S. CLAUDINE,

CAMERON, Master.
MAUI.

Will leave Honolulu every Tuesday at 5 P. M., touching at Lahaina, Kahului, Nahaia, Hana, Hamoa and Kipahulu, Maui, returning, touches at Honolulu Sunday mornings.

Will call at Nuu, Kaupo, once each month.

S. S. LEHUA

BENNETT, Master.
MOLOKAI, MAUI, LANAI.

Sails every Monday for Kaula, Kamao, Maunaloa, Kalaupapa, Lahaina, Honouliuli, Clowai. Returns arrives at Honolulu Saturday mornings.

This company reserves the right to make changes in the time of departure and arrival of its steamers WITHOUT NOTICE, and it will not be responsible for any consequences arising therefrom.

Consignees must be at the landing to receive their freight. This company will not hold itself responsible for freight after it has been landed.

Live stock received only at owner's risk.

This company will not be responsible for money or valuables of passengers unless placed in the care of the purser. Passengers are requested to purchase tickets before embarking. Those failing to do so will be subject to an additional charge of twenty-five per cent.

The company will not be liable for loss of, nor injury to, nor delay in, the delivery of baggage or personal effects of the passenger beyond the amount of \$100.00, unless the value of the same be declared, at or before the issue of the ticket, and freight is paid thereon.

All employees of the company are forbidden to receive freight without delivering a shipping receipt therefor in the form prescribed by the Company, and which may be seen by shippers upon application to the pursers of the Company's steamers.

Shippers are notified that if freight is shipped without such receipt it will be solely at the risk of the shipper.

C. L. WIGG, President.
S. R. ROSE, Secretary.
CAPT. T. K. CLARKE, Port Supt.

Schrader's Wailuku Hotel

Situated at the mouth of the scenic wonder of the Islands, the IAO VALLEY, Maui. This house is a convenient starting point for tourists visiting the world-famous crater of Haleakala, the largest extinct volcano in the world. The house is modern in its appointments and genuine home cooking is provided guests.

MRS. G. D. SCHRADER,
Proprietor.

Capstan Navy Cut Gold-tipped 3 Castles Cigarettes

Ivory Goods, Sofas, Chairs, Tables, Bureaus Silk Table Covers

LUN CHONG CO.

Hotel Street, opposite the entrance

HAWAIIAN SCENIC CALENDAR FOR 1900

THIRTEEN BEAUTIFUL VIEWS!
FOUR PIECES HAWAIIAN MUSIC!
RAINFALL AND TEMPERATURE TABLES

A Neat Remembrance to Send to the Folks at Home

PRICE 50 CENTS

Published and for sale only by
THE GOLDEN RULE BAZAAR
316 FORT STREET, HONOLULU.

Just Received

A New Line of Plain and Fancy Bathing Suits and Trunks,

Also a Large Assortment of Footless Golf Stockings Suitables for Football, Baseball, Cycling, Golfing and Tramping.

PACIFIC CYCLE & MFG. CO.

R. A. DEXTER, Manager. FORT ST. EHLERS BLOCK.

Johnson's Parquetry Floors Are the Best!

Parquetry is becoming very popular on account of its great beauty, durability, cleanliness and moderate cost.

We have a few patterns in stock now and can execute ordinary orders without delay. Special designs are furnished to order only.

Designs and estimates are cheerfully furnished upon application to the Sole Agents

LEWERS & COOKE.

Fort Street.

JOHNSON'S FLOOR BRUSHES,
JOHNSON'S FLOOR WAX,
JOHNSON'S POWDERED WAX,
JOHNSON'S FLOOR RESTORER,
JOHNSON'S SOLVENT.

ROBT. LEWERS. F. J. LOWREY.
C. M. COOKE.

LEWERS & COOKE,
Lumber and Builders' Hardware,
DOORS, SASH, BLINDS,
PAINTS, OILS, GLASS,
WALL PAPER, MATTING,
CORRUGATED IRON,
LIME, CEMENT, ETC.

Let Us Do Your Baking?

You certainly don't want to be in a hot kitchen, working about a red-hot stove such days as these. Save yourself that disagreeable trouble. Order all the BREAD, ROLLS, CAKES and PASTRY here. We'll send everything fresh; 'twill be as toothsome as the home-made kind, and cost considerably less.

Kindly give us a trial.

The German Bakery

823 FORT ST. TELEPHONE 677.

Refrigerated Poultry

—AND—

Fresh Salmon

CONSTANTLY ON HAND.

Metropolitan Meat Co.

TELEPHONE NO. 48

BUSINESS MEN'S MEMO.

Saturday, February 3.

Five per cent (\$1 per share) assessment is due and payable on the assessable stock of the McBryde Sugar Co., Ltd. on August 15, 1899. Five per cent (\$1 per share) on October 1, 1899 and 5 per cent (\$1 per share) on January 1, 1900.

Two and one-half per cent assessment on the assessable stock of Oiaa Sugar Co., Ltd., is due and payable October 1, 1899, and 2 1/2 per cent additional on the 1st of each succeeding month, including July, 1900.

Sixty per cent assessment on the 10,000 new issue of shares of Waialua Agr. Co., Ltd., due Jan. 15, 1900, delinquent February 15, 1900.

Fifth assessment of five per cent or one dollar per share on the assessable stock of Kamalo Sugar Co., due February 1, 1900, delinquent March 1, 1900.

Eighth assessment of 10 per cent on Rapid Transit & Land Co. due February 1st, delinquent March 1st.

Sixth assessment of 10 per cent on the assessable stock of Kona Sugar Co., Ltd., due January 2, 1900.

The fifth assessment of 10 per cent or \$5 per share on the assessable stock of Kihai Plantation Co. is due and payable January 2, 1900.

The fourth assessment of 10 per cent or \$10 per share on the assessable stock of Maunaloa Sugar Co., Ltd., is due January 1, 1900 delinquent January 21, 1900.

Fourth and last assessment of 25 per cent on the assessable stock of Oahu Sugar Co., Ltd., due February 1, 1900.

Note Heads, Bill Heads, Letter Heads and all kinds of Job and Commercial printing neatly and promptly executed at the Star Office.

THE PANTHEON CLOSED UP

TWO PLAGUE VICTIMS FROM THE PREMISES.

Center of Infection In Hay Loft of the Stables—Action of Health Authorities About Matter.

About 5 o'clock Saturday afternoon President Wood, of the Board of Health and a force of guards arrived at the corner of Fort and Hotel streets, closed the Pantheon saloon and Pantheon stables and took charge. Marshal Brown arrived about the same time with a party of police and cleared the sidewalks of people.

There was naturally great interest in the proceeding and a big crowd gathered. The mass thought that the action dated from the case of Ah Man of over a week ago. This was a mistake. At 3 o'clock Saturday afternoon Dr. Gavin reported to Dr. Wood that he had found the bacilli of plague in the cultures made from the blood of Wong Chin, the Chinaman who had bunked with Ah Man and had died in the pest house at the Chinese hospital. Dr. Wood examined the slides and was convinced that the bacilli were there. The work of closing the saloon and stables followed shortly after.

Yesterday afternoon members of the Board of Health visited the premises. The saloon was found to be in excellent sanitary shape. With the stables was different. The rear half of the building was wet and, apparently, had been so for a very long time. The two plague victims slept together on the hay in the loft almost directly over the Hotel street entrance. Members of the Board were of the opinion that this hay was also infected.

Later in the afternoon a meeting was held to determine just what should be done with the premises. On motion of Mr. Cooper it was decided that the water closets at the Pantheon be overhauled and disinfected, and, after a suitable length of time the place be allowed to resume business. It was decided to have Prof. Ingalls examine the stables and report back as to what should be done. Some members of the Board of Health are of the opinion that these premises can not be properly fumigated and should be burned.

Men working in the stables were held and will be sent to one of the detention camps. Those working in the saloon were allowed to go. No Chinese have worked in the saloon since the death of Ah Man.

L. C. Able, a third owner of the saloon, was present at the closing for himself and the other owners, David Dayton and the Jim. Dodd estate. He informed President Wood that he and his partners were ready and willing to comply with any requirements of the Board. John Sullivan made the same statement on behalf of the Pantheon Stables company.

It has been pointed out that the Pantheon stables abut on Fowlers yard, which in turn is against the Nimitz street block, hence, the Board of Health. The opinion of some is that the infection was carried by rats at the time of this fire across to the hay loft at the Pantheon stables. There is considerable variance between stories as to when Ah Man left the hay loft at the stables. Chinaman who claim to be thoroughly familiar with the circumstances assert that he slept there up to the very night he died and that that night he visited the residence of Jim Dodd and asked for admission, which was refused. William Lowrie, manager of the saloon, is positive that he did not sleep in the hay loft after Monday, preceding his death on Friday morning.

"About noon Monday," says Mr. Lowrie, "one of the boys reported to me that Ah Man was sick in the hay loft. I immediately sent a messenger to the Board of Health office and Dr. Hoffman responded. After examination Dr. Hoffman reported to me that there was nothing suspicious about the case. As Ah Man continued to suffer, however, and seemed to have fever I subsequently reported to Dr. Hoffman to examine him again. This was done at the report of the specialist was precisely as before.

"Some time during the afternoon Ah Man left the premises and I never saw him again. His death of plague was reported Friday morning. I immediately discharged all of the Chinese help I had."

HE WAS KILLED.

Retired General, whose youngest son, an officer in the Gordon Highlanders, was killed in the battle of Elandslaagte has just received (says the Globe) two letters from officers in the regiment describing the manner of his son's death. The gallant young officer had paused after the conflict to pour brandy from his flask down the throat of a wounded Boer, when another Boer close by crept forward and shot him in the face.

ALIMONY.

A suit for divorce has been commenced against a wife in Cleveland, O., and the court has ordered her to pay her husband \$4 a week until the case is decided.

"GREEN GROW THE RUSHES, OH."

When the Americans went to war with Mexico a melody every variety of which ended with "Green grow the rushes oh," was very popular. It pleased almost everybody's fancy and was sung by young and old. While in camp the soldiers would sing it constantly and all the Mexicans could hear was "Green grow the rushes, oh." They immediately began to call the American soldiers by the first two words, as it sounded to them, "gringos." They made it into one word, by which they will ever know the Americans—"Gringo."

A RUSSIAN STORY.

Speaking of a conceited and arrogant young clergyman, he said: "The fact is, these young gentlemen think that the office magnifies the man. Now, Count S. told me that he saw in a Police Court in Russia a priest brought in, in undress of purple, and the court, magistrates and all, knelt and a Police Sergeant kissed his hand. Then the judge, the magistrate said: 'You nasty, drunken beast, so you were drunk again yesterday. I'll make you remember it this time.' The priest was led out to an adjoining yard, his clothes torn off, and fifty lashes given him; when he was brought back half fainting all knelt and kissed his blessing." —Life of Archbishop Benson.

A GOOD THING.

There's one good thing when they feel dry That business men cannot pass by, For far and wide it's fame you hear, They stop to drink of "Rainier" beer. On draught or in bottle at Criterion.

FOR GOLF RASH



Heat Rash or any itching, irritation, inflammation, or chafing, produced by exercise or heat, for undue or offensive perspiration, and for many sanative uses, a bath with

Cuticura SOAP

the most effective skin purifying soap in the world, as well as purest and sweetest for toilet, bath, and nursery, when followed by gentle anointments with CUTICURA, the great skin cure and purest of emollients, is most cleansing, cooling, purifying, and refreshing.

SAVE YOUR HAIR Warm shampoos with CUTICURA SOAP, followed by light dressings with CUTICURA, purest of emollients, will clear the scalp and hair of crusts, scales, and dandruff, soothe irritated and itching surfaces, stimulate the hair follicles, and produce luxuriant, lustrous hair, with clean, wholesome scalp, when all else fails.

SAVE YOUR HANDS Bathe and soak the hands, on retiring, in a strong, hot, creamy lather of CUTICURA SOAP. Dry thoroughly, and anoint freely with CUTICURA, greatest of emollient skin cures. Wear during the night old, loose, kid gloves. For sore hands, itching palms, and chappedness nails, this treatment is simply wonderful.

Painting Paper Hanging

And all work in this line promptly and carefully attended to.

Glazing for the trade on short notice.

GEORGE TURNER,
Telephone 923. Beretania Street.

C. FARIA Merchant Tailor

BERETANIA STREET.
Clearing and Repairing Neatly Done.

Grand Display of Christmas Goods!

SILK PAJAMAS SILK SHIRTS

In up to date colors and styles, and at prices to beat the lowest

IWAKAMI

The Great Hotel Street Bazaar

Two Stores, Robinson Bldg., Hotel St.

J. H. & CO.—J. H. & CO.—

The Best at the Lowest Prices at Hopp's

THE BEST FURNITURE IN TOWN

Upholstering a Specialty

J. HOPP & CO.

LEADING FURNITURE DEALERS

KING & BETHEL STREETS

J. H. & CO.—J. H. & CO.—

BOOKS! BOOKS! BOOKS!

Books for Children Books for Boys and Girls Books for You

Just received ex Alameda and other Ships.

Books lent to read, 5 cents a volume. Old Books bought or exchanged. Dolls, Toys, etc., for Christmas. The cheapest house in town. Give us a call.

White Enamel Steel Beds

In all varieties and every size. Spectacles from 25c. to \$1.50 to suit all sights.

ATHEWS & SON

Furniture Dealers
26 Beretania St. Opp. Progress Block

Note Heads, Bill Heads, Letter Heads, and all kinds of Job and Commercial printing neatly and promptly executed at The Star Office.

Lands For Sale!

Lots in King Street Tract from \$1350 to \$1500 a lot, formerly known as G. N. Wilcox's premises.

20 lots in Manoa Valley formerly Montano's Tract, \$3000 a lot.

400 lots in Kaiulani Tract from \$200 to \$250 a lot.

50 lots in Kekio Tract opposite Makee Island, \$500 a lot,

20 lots in Puunui Tract. 100 x 200, \$1000 a lot.

Etc., etc., etc.,

For further particulars apply to

W. C. Achi & Co. Real Estate Brokers

January 11, 1900.

W. G. IRWIN & CO., Ltd.

Wm. G. Irwin, President and Manager
Claus Spreckels, First Vice-President
W. M. Giffard, Second Vice-President
H. M. Whitney, Jr., Sec'y and Treasurer
Geo. J. Ross, Auditor

SUGAR FACTORS, Commission Agents,

AGENTS OF THE OCEANIC STEAMSHIP COMPANY OF SAN FRANCISCO, CAL.

CHAS. HUSTACE.

212 KING STREET. TEL. 119.
Between Fort and Alakea Sts.
DEALER IN

GROCERIES and PROVISIONS.

Fresh California Roll Butter and Island Butter always on hand.

Fresh goods received by every steamer from San Francisco.

SATISFACTION GUARANTEED.

TWO MONTHS ON THE WATER

ISLAND VESSELS' EMPLOYEES GET TIRED.

A Lively Time in Yesterday's Storm. Dead Rat Floating on the Water Furnishes Occupation.

The quarantined steamers and schooners had a very lively time yesterday in the harbor and outside. The storm that began early in the morning created a very heavy swell and the vessels rolled and pitched till midnight.

Nowhere was the news of more plague received with greater disappointment than among the employees of these island vessels. Some of them have been on the water now for nearly two months. They are at liberty to go ashore at many places on other islands, as far as the wishes of the people there are concerned, but the rules of the Board of Health forbid it. On Maui, Kauai and some parts of Hawaii the people invite the steamer boys to come ashore all they want, but the employees of the both steamship companies have been instructed to stay with their vessels.

The quarantine on the water front here has become more strict since Captain Campbell was put in general charge. No personal effects or newspapers may go out on any vessel without being fumigated, and the steamers are all being watched more closely.

Two men were taken by special permit from the Mikabala to the Maui yesterday, to take the places of the chief engineer and mate, who had come ashore and been refused permission to return to the vessel. With a heavy storm coming on, the Maui was in a serious predicament, having no captain, no mate and no chief engineer. A dead rat floating in a vessel in the harbor created excitement and diversion on Saturday. It was called to the captain's attention and the latter concluded that, as there was nothing else to do, someone might as well be put at work watching it. The man watched the rat, while others on the vessel watched him and got their share of amusement, till it was slowly carried out of sight. Then the man reported to the captain that the rat was gone beyond recall. Anything to kill time is the rule on some of the quarantined steamers.

ACCIDENTAL DEATH.

Jury's Verdict in the Pioneer Mill Accident.

LAHAINA, February 4.—Sheriff Baldwin of Wailuku swore C. V. Dudgeon, D. Taylor, A. Wall, and Aukai Thursday to inquire into the cause of the death of the three Japanese who were killed in the accident at the Pioneer Mill. The testimony was not all heard that day and was continued Friday and Saturday. A verdict was returned of accidental death, blaming no one. The coroner dissented from the verdict.

Note Heads, Bill Heads, Statements and Fine Commercial Printing at the Star Office.

PEARSON & POTTER CO., LIMITED.

Canvas

- Stretchers,
- Hammocks,
- Slings,
- Tents,
- Awnings,
- Canopies,
- Clothes Bags,
- Refuse Bags,
- Laundry Bags,
- Buggy Covers,
- Dray Covers

And any kind of canvas work whatsoever quickly made up to order.

Telephone us and we will send Samples of Material, Take Measurements and Give Estimates.

We have on hand a nice line of

- Lawn Umbrella
- Canopies, Etc.
- Camp Stools,
- Camp Chairs,
- Steamer Chairs,
- Reclining Chairs,

..1900..

TENNIS BALLS

PEARSON & POTTER CO., LTD. 312 Fort St. Tel. 565

NEW ADVERTISEMENTS.

S. S. NOTICE.
W. G. Irwin & Co., Ltd. Page 1
TO RENT.
Newly Furnished Room Page 1
WANTED.
An Office Boy Page 1
A Stenographer Page 1
MISCELLANEOUS.
Hawaiian Hardware Co. Page 7
W. W. Dimond & Co. Page 4
Bishop & Co. Savings Bank Page 3

NEWS IN A NUTSHELL.

Bits of Paragraphs that Give Condensed Notes of the Day.

Nigel Jackson and wife have returned from the coast.
An office boy is wanted at the Hawaiian Electric Co. office.
Mr. Russell is now building a fence up the River street side of the burned district.
Nicely furnished room for gentleman is to rent. Apply to X care of Star office.

Resumption of street car traffic was welcomed by many out-of-townners this morning.
The Doric, due on the 8th, will be expected tomorrow afternoon with later mail and news.

Prof. Lyons reports there was a slight earthquake shock about 11 o'clock Saturday night.
Japanese merchants have erected a warehouse in Kakaako for storing their surplus merchandise.

Quarantine of King street from Nuuanu to the bridge will probably be raised this afternoon.
An important notice to intending passengers per E. S. Australia on February 20th appears in this issue.

The Board of Health will not allow anything save private business papers taken from the warehouse in Aala.
Dr. Hoffman returned from Tanialua this morning and has resumed his duties at the Board of Health office.

New arc lights, recently voted by the Executive Council for Pauahi street will now be used for some other locality.
Both of May & Company's stores are closed today out of respect to the memory of the late J. Weir Robertson.

The Savings Bank department of Bishop & Company has been removed from Bethel street to the room adjoining the Bank.
Judge Stanley formally opened the February term of the Circuit court this morning and then adjourned to next Monday.

A competent stenographer, able to assist in general office work is wanted. Address in own handwriting to E. P. O. Box 144.
The steamer Glandine came to Kinohiwa this morning long enough to put a horse ashore and then went back into the stream.

Old lumber torn from the rear of buildings on Nuuanu street is being burned on the fire district near Maunaloa and Hotel streets.
Wo Hop, the tailor near Union square from whose shop a plague case was taken, has completed his term of quarantine and is out.

The walls of Mr. Hoffman's new ice factory in Kewalo are nearly up and the business will open in the course of the next few months.
May & Co., Ltd., are closed today out of respect to the memory of the late J. Weir Robertson. Business will be carried on tomorrow as usual.

Mrs. Dole sent 12 bolts of flannel to the drill shed camp this morning. H. Packard & Company donated a quantity of wraps for the children.
J. A. Rodnet has filed a bond in the sum of \$1000 as administrator of the estate of the late A. A. Todd, of Samoa. Henry Smith is his surety.

The Hawaiian Hardware Company are in receipt of large invoices of goods by the Cyrus Wakefield. They cordially invite inspection of same.
H. L. Kerr & Company and others will establish a brick manufactory in Nuuanu valley. They claim to have discovered excellent clay for the purpose.

In the case of George H. Paris vs. N. W. Crisholm and J. M. McChesney, bill for specific performance, defendants have filed a general denial by way of demurrer.
W. W. Dimond & Company have employed Miss E. Schorr late of San Francisco, and an expert in making artistic lamp shades. The public is cordially invited to call and inspect her work.

The Inter-Island steamers Kauai and Ke Au Hou will leave tomorrow afternoon, the former for Lahaina and Kapaemahu and the latter for Nawiliwili, Koloa, Eleele, Makaweli, Waimea and Kekeha.
Dr. Wood received a report from Mr. Lydecker on Saturday that the cars were in good condition, and immediately addressed a letter to Mr. Pain stating that operations might be resumed so far as the Board of Health was concerned.

SENATOR HOAR.
Senator Hoar refuses to change his vote on account of the speech by Senator Beveridge. This shows how obstinate and set in his ways a man gets after being in the senate awhile.—Chicago Record.

Note Heads, Bill Heads, Letter Heads and all kinds of Job and Commercial printing neatly and promptly executed at the Star Office.

Office desks and chairs
Just arrived.

Wernicke bookcases
For home and office, will soon arrive and should be ordered ahead

The Globe Company's
Desks, Filing-Cases and all kinds of office novelties secured at lowest rates.

Stocks and Bonds
Bought and Sold.

Members of Honolulu Stock Exchange.

HENRY WATERHOUSE & CO.
QUEEN STREET.
Warehouse Telephone 312.

Jas. F. Morgan
AUCTIONEER.

AUCTION SALE
OF
WOODEN BUILDINGS
HARDWARE, PAINTS
OILS, ETC.
ON WEDNESDAY, FEB. 7,
AT 12 O'CLOCK NOON.

At the premises corner King and Fort streets, I will sell at Public Auction, by order of E. O. Hall & Sons, all the woodwork, flooring, flooring joists, iron shutters, doors and frames, glass sashes, slate roofing, etc., of their former place of business; flagstaff with iron, in good condition; a large tree, etc.
Also a large supply of paints, oils, hardware, etc., for which they now have no storage room.

Jas. F. Morgan
AUCTIONEER.

HE IS TREADING SOFTLY.

The emperor of China is keeping very quiet. Possibly he realizes that Senator Mason is liable to get up and sympathize with him at any moment.—Washington Star.

MISSIONARIES BLAMED.

TORONTO, Ont., January 10.—The Toronto Presbyterian foreign mission office today received a letter from its mission in Honan, China, bearing news of complete failure of crops throughout that region. Famine comforts the natives, who are greatly excited, blaming the missionaries for their misfortunes.

MAXIMUM PRICE.

If the senate has established a maximum price for seats the members may turn Senator Clark out for paying too much.—Chicago Record.

HOW, INDEED!

"Did you see anything of a stray pig along the road?" asked the farmer of an Irishman who was passing.
"Begorry," replied the son of Erin, "an' how would I be atther knowin' a strathay pig from any other pig?"

HIS IMPRESSION.

Doctor—My rule is, "Be sure you're right, and then go ahead."
Friend—Indeed I thought it was, "when in doubt, perform an operation."

THE OTHER GROWLER.

Mrs. Crimmonbeak—Has Mr. Crimmonbeak gone home for dinner yet, Bridget?
Bridget—No, mum.
"I thought I heard him down stairs."
"Sure that was the dog you heard growlin', mum."

Choice
Real Estate
Bargains
FOR SALE.

1.—Fine Lot and Residence near Thomas Square. The lot has a frontage on Beretania street of 400 feet, grounds tastefully laid out with shade and fruit trees.
2.—Fine Residence lot Kewalo street, 135 feet frontage, 260 feet deep.
3.—Residence and Lot Kinohiwa street, Lot 135 feet front, 160 feet deep. Two story house, stables and outhouses.
4.—Peninsular Lot, 50 feet water frontage, 214 feet deep, area 14,000 square feet.

For further particulars apply to
HARRY ARMITAGE
CAMPBELL BLACK, MERCHANT ST
Telephone 889.

Chloride of Lime,
Sulphuric Acid,
Creoline,
Deodorine

Disinfectants
In Your Cesspools,
Vaults, Etc....

It is still necessary
to use

Disinfectants
In Your Cesspools,
Vaults, Etc....

Chloride of Lime,
Sulphuric Acid,
Creoline,
Deodorine

Disinfectants
In Your Cesspools,
Vaults, Etc....

It is still necessary
to use

Disinfectants
In Your Cesspools,
Vaults, Etc....

Chloride of Lime,
Sulphuric Acid,
Creoline,
Deodorine

Disinfectants
In Your Cesspools,
Vaults, Etc....

It is still necessary
to use

Disinfectants
In Your Cesspools,
Vaults, Etc....

Chloride of Lime,
Sulphuric Acid,
Creoline,
Deodorine

Disinfectants
In Your Cesspools,
Vaults, Etc....

It is still necessary
to use

Disinfectants
In Your Cesspools,
Vaults, Etc....

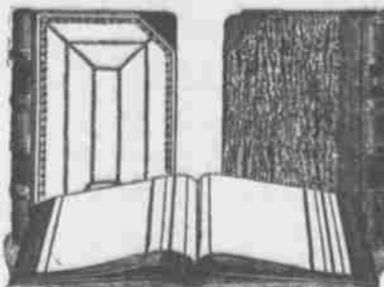
Chloride of Lime,
Sulphuric Acid,
Creoline,
Deodorine

Disinfectants
In Your Cesspools,
Vaults, Etc....

It is still necessary
to use

Disinfectants
In Your Cesspools,
Vaults, Etc....

★★★ BLANK BOOKS



ALL KINDS,
ALL SIZES,
ALL PRICES.

Special:
See Our New
BROAD DEBIT
SALES LEDGER

WALL, NICHOLS CO., LTD.
King Street, Honolulu

Don't Relax Your Vigilance

It is still necessary
to use

DISINFECTANTS

In Your Cesspools,
Vaults, Etc....

Chloride of Lime,
Sulphuric Acid,
Creoline,
Deodorine

We guarantee to kill all germs,
no matter of what nature

HOBSON DRUG CO.,

SOLE MANUFACTURERS.

Corner King and Fort Sts.

NEW ENGLAND BAKERY AND CANDY COMPANY

Is prepared at all times to furnish the

Best Pies,
Best Cakes,

Ice Creams and Sherberts.
Hand-made Chocolates and Marshmallows.

Also, French Candies packed in elegant boxes, suitable for Christmas presents.

Candy Rings and Canes, for the little folks.
Come early and avoid the rush!

THE NEW ENGLAND BAKERY
AND CANDY CO.

J. OSWALD LUTED,
Manager.

Our 'phone is No. 74.

FOR SALE.

\$2,500 House and Lot at Punahou, consisting of 3 Bed Rooms, Parlor, Dining Room, Kitchen, Etc.

Size of Lot 75x125. A bargain.
\$1000 Lot at Kalia, 80x150.
\$950 Lot at Kalia, 75x150.
\$400 Lots at Kalia, 50x100 each.

Apply to
WILLIAMS & SAVIDGE
810 Fort Street;

Telephone 436

New Stock OF Dry Goods

Embracing all Departments,
being opened by

WHITNEY & MARSH, LTD IMPORTERS

519 Fort Street

NOW IS THE TIME TO ACCOMPLISH LOTS OF SEWING

You need not come down town, order by telephone, and we will send you samples of goods by bicycle express and serve you at your own door.

TELEPHONE NO. 137.

Silk Finish Corduroy, for bicycle skirts, etc., 50 cents a yard.
Extra Special Value in White Piques just arrived, fine and heavy ribbed, 20, 25, 30 and 35 cents a yard.
All Wool, English Tweeds, mixed colors, 50 inches wide, light and comfortable for walking or riding, \$1.00 yard.
One lot of India Linens, finest material for dresses or Holokus, 12 yards length, \$1.00, \$1.25, \$1.50, \$2.25, \$3.00 and \$4.00 per piece.
Amoskeag Gingham fast colors, new patterns, 27 inches wide, for Dresses, Wrappers, Pajamas, etc., 8 yards for \$1.00.
Flannette, good colors, 8, 10, 12 and 14 yards for \$1.00.
Pequot Sheeting, from 1 1/4 yards wide to 2 1/2 yards wide.
Linen Sheeting, from 40 inches to 3 yards wide.

Remnants of Embroideries, Wool and Cotton Goods

B. F. Ehlers & Co. FORT ST.

Perfect Perfumes

NEW PERFUMES
NEW STYLES
NEW ODORS

In Dainty Baskets, Cases and Bottles

Toilet Sets and Cases in New Designs
Atomizers and Toilet Waters
Maile Cologne

BENSON, SMITH & CO., Ltd.
Fort Street, Honolulu.