



A Merchant Can Afford Anything Better Than See His Trade Go Elsewhere

EVENING BULLETIN

3:30 O'CLOCK

Good Advertising Is The Sheet Anchor Of Trade

EDITION

You can't lift a retail business out of a small neighborhood orbit unless you ADVERTISE. PUBLICITY IS THE ONLY MEANS OF EXPANSION. When the masses are informed that you actually exist, that you have goods to sell, that you offer inducements to the purchasers, then your trade grows. This lesson has been learned by every merchant who advertises in the EVENING BULLETIN

STEAMER TABLE

From San Francisco:
Alameda Mar. 6
America Maru Mar. 9

For San Francisco:
Hilonian Feb. 25
China Feb. 29

From Vancouver:
Norangi Mar. 7

For Vancouver:
Moana Mar. 4

VOL. X. NO. 39:3

HONOLULU, TERRITORY OF HAWAII, MONDAY, FEBRUARY 24, 1908

PRICE 5 CENTS

MAUI COUNTY MARKETS ITS BONDS KAUAI PROTESTANTS CALL ON FREAR

MAUI BONDS SOLD PENDING TEST

Maui County has sold its bonds, provided the Supreme Court passes favorably on the legality of the issue.

The County securities provided by the last Legislature and approved by the President have been taken up by a number of investors represented by the First National Bank of Wailuku and the Bank of Hawaii.

This total issue amounts to \$110,000. Of this amount the banks named bid for \$50,000, with an option until June 30 on the remaining \$60,000. A condition of the sale is that a test case shall be brought before the Supreme Court to establish the validity of the bonds.

The preparation of this suit is what brought County Attorney Dan Case to town by the Klina. He was at work this morning on the preliminaries. The purpose of this case is to settle and vexed questions and the presumption is that it will be decided before June 30, when the option on the remaining \$60,000 worth of bonds runs out.

The price paid for the bonds is 98. The interest rate is five per cent.

Maui officials consider themselves lucky. Treasurer Baldwin came to town some time ago and found no market for the County securities. After considerable negotiating a number of investors took up the matter with the result that their agent, the Bank of Hawaii, put in the bid as already stated through the First National of Wailuku.

It is not presumed that there is any doubt about the status of the bonds. Yet law is sometimes such a doubtful quantity that the final action by the court is desired.

PIT VERY ACTIVE

(Special Bulletin Wireless)
HILO, Hawaii, Feb. 24.—
Surveyor Wall yesterday measured the Volcano and found that the bottom of the pit of Halemaumau has risen 125 feet in eight days and is still rising on an average of ten feet daily. The bottom of the pit is now only three hundred and two feet from the surface. The pit is very active.

KNUDSEN FOREMAN OF GRAND JURY Work Of Special Term Of Federal Court Has Begun

Senator Erick Knudsen of Kauai is foreman of the Federal Grand Jury for the special February term, being appointed this morning by Judge Dole to superintend the deliberations of that body. Ex-Governor George R. Carter is a member of the Grand Jury.

The special February term opened formally last week, but the first work of the term was done this morning, when the Grand and petit juries assembled and the oath was sworn in. The administering of the oath and the charge to the Grand Jury was postponed until 2 o'clock this afternoon, on account of the absence of one of the members.

The various cases which are to occupy the time of the court during the special session were called this morning, and it developed that two of the prisoners have skipped out and are metaphorically twiddling their fingers at the end of their noses at your Uncle Samuel.

Kanikih Hirano, against whom were pending several charges, including perjury and adultery, was one of the absentees. His cases were put over from time to time last term, finally being definitely set for trial for this morning. Three times the deputy marshal cried the defendant's name in the corridor, but there was no answer. His bondsman were then called to produce his body, but again there was no response. So, unless Hirano is found, it will be up to them to make good.

Hanzo Ueno, charged with offenses similar to Hirano's, also failed to show up. In that case there is no bond, the defendant being out without bond.

The most important case to be tried this term is that of John Wynne charged with the murder of Second Engineer McKinnon on board the Rosecrans. The Government this morning elected to go to trial on the last four charges of the indictment, in accordance with the Court's order requiring the prosecution to elect. Wynne was then called upon to plead and entered a plea of not guilty. It is supposed that the defense will be

NOTLEY WILL IS AGAIN SUSTAINED

"Notley writ dismissed."
This short sentence, which was the text of a cablegram from Washington, received this morning by Judge Stanley, announces the end of the famous Notley will case, which for a number of years went the rounds of the local courts, until it finally landed in Washington, where it has just now been ended. The decision must have been given at noon by the U. S. Supreme Court, the difference in time explaining the early hour of the arrival of the announcement.

The history of the case is quite a lengthy one. Chas. Notley, Sr., died in May, 1902, leaving a will which had been made in 1898. Under the terms thereof he bequeathed one-sixth of his property to each of the following persons: Mrs. Notley, the widow; David Notley, a son; Maria Hughes, a daughter; Thomas Notley, a son who is now at Kalaupapa; Mrs. Danford, a niece; and one-eighth to the children of Chas. K. Notley. Nothing was left to Chas. Notley himself.

With this will was a codicil, made in April, 1902, or about three weeks before the death of the testator, in which the original will was altered in that Mrs. Danford was given the homestead at Paaulo, Hamakua, and a life interest given to the widow in the cottage on this property which she had always used.

Soon after the death of Notley his widow and children started a suit to contest the will on the grounds that undue influence had been brought to bear on the testator by Mrs. Danford. The case was heard in Hilo before Judge Little, who sustained the will, in August, 1902. The contestants then appealed for a jury trial, and the case was heard in Hilo in January, 1903, before Judge Robinson and a jury. The Court instructed the jury to return a verdict sustaining the will on the grounds that no undue influence had been proved.

From this the contestants appealed to the Supreme Court which in March, 1904, sustained Judge Robinson's action. Later on the Supreme Court denied two motions for a rehearing filed by the contestants in May, 1904, and July, 1904. The contestants then brought a writ of error to the Supreme Court of the Territory, which was quashed in April, 1906. As the Organic Act was amended in March, 1905, so that it allowed appeals to the U. S. Supreme Court in cases where \$5000 or over was involved, the contestants sued out a writ of error to the U. S. Supreme Court, and it is this writ, which, according to the cablegram, has been dismissed.

Throughout the case Judge Stanley has appeared for Mrs. Danford and W. A. Kinney and his associates for the contestants. Judge Stanley has just returned from Washington, where he argued on the merits of the case. He was assisted by Mr. Browne, of Britton & Gray, who argued on questions of jurisdiction. Mr. Morse of Boston argued for the contestants.

The estate which has caused this long and bitter contest, is of considerable value. It was valued at about \$350,000 when the inventory was taken, and consists of real estate on Hawaii, bonds, mortgages and stock in the Hamakua Mill Co.

Wynne has in his eyes all the look of an insane man. The case of Frank Dillon was set for trial March 9. United States Assistant District Attorney Rawlins nolle prossed the charge against David Lamanui and Ikeole, Edmunds Act cases, and against Susan Nye and Harry Flint. In the latter case he stated that the prisoners had married since they were indicted. The case of Ah Hoy and Kihola was set for next Monday. Two counterfeiting charges against Kim Keon Moon were over for the term, as the prisoner is now serving a sentence under a former conviction. The same action was taken in the cases of Kong Chi Soon, Chu Hor, Kim Bong Chuen, and Poi Kekauoha.

The trial of Lari Yip and Lau Shee, charged with peonage, was set for next Monday, to be followed by a separate trial of Lam Yip for adultery. The trial of Lee Sa Kee for violation of the Edmunds Act is set for tomorrow. This is the case in which Attorney Lightfoot demurred

on the ground that the Edmunds Act should not apply in Hawaii, the demurrer being overruled by Judge Dole.

George Kekauoha's sentence under his second conviction went over until the April term, as he is now serving one sentence.

Two of the men summoned to appear as petit jurors failed to appear when the roll was called, without having been previously excused. On motion of the U. S. District Attorney bench warrants were issued for the two absentees, Robert E. Mist and Henry Biermann.

Judge R. P. Quarles was introduced to the court by J. Lightfoot, and on his motion admitted to practice in the U. S. District Court.

A lease has been filed with the Registrar of Conveyances by which the Oahu Railway and Land Company rents to the Associated Oil Company, for a period of 5 years, 11 months and 16 days, 1,228 acres of land in Iwilei, to be used for tanks, pipe lines, etc. The annual rental is \$1665. The lease may be extended for six years after the expiration of the original time.

Court Sustains Law On Rebates

WASHINGTON, D. C., Feb. 24.—The United States Supreme Court has sustained the Elkins Act, which prohibits railroad rebates.

CLERGYMEN AGAINST INCREASE OF NAVY

WASHINGTON, D. C., Feb. 24.—A petition against the proposed increase of the Navy has been filed by Bishop Potter and other clergymen and has been presented to the Senate.

REFINED SUGAR HAS ADVANCED TEN CENTS

NEW YORK, N. Y., Feb. 24.—Refined sugar has advanced in price ten cents a hundred pounds.

NOGI SYMPATHIZES WITH GEN. STOESSEL

ST. PETERSBURG, Russia, Feb. 24.—General Nogi has cabled to the newspapers expressing his sympathy with General Stoessel, who has been sentenced to death.

ANARCHIST MURDERER

DENVER, Colo., Feb. 24.—It is believed that the assassin of Father Heinrichs is A. Jabriele, a Sicilian anarchist.

CRUISERS ARRIVE

BREMTON, Wash., Feb. 24.—The cruisers Colorado and Pennsylvania have arrived here, where they will receive repairs.

OPERATE ON EDISON

NEW YORK, N. Y., Feb. 24.—Thomas Edison was operated on this morning for an abscess in the ear. The operation was successful.

MARSHAL HENDRY TO DRINK BUTTERMILK

Marshal Hendry is going to start a small farm to raise buttermilk, because he wants to look like Fairbanks.

The robust Marshal already has the stock, Internal Revenue Collector Drake today turning over to him his herd of five cows, acquired recently in his raid on the moonshine still on the Afong premises up Nuuanu valley.

The Collector has been much worried of late by callers demanding milk punches, and he came to the conclusion that the best way to get rid of the annoyance would be to turn the dairy over to the Marshal.

The Marshal was willing, for he has heard that buttermilk conduces to a lessening of averdupois, and with the Indiana Presidential candidate posing as a shining example of a buttermilk diet, Hendry has become quite enthusiastic. So the cows, milk tins, churns, etc., have been turned over to him. He is expected to look like a shadow before long.

POLICE AFTER MORAL PERVERT

The police are at present looking for a man who has been making himself a nuisance in the residence section of the city. He has the habits of a "Peeping-Tom," and at other times enters bedrooms when the inmates are not around, making himself vastly objectionable by his most disgusting practices.

About a year and a half ago a stranger was shipped out of the country who had been operating in just this manner, and the police believe that the unknown man who is now at work is this same person. He is a white man, well dressed, and of good address, but he is a moral degenerate.

Tonight will be the last opportunity to see the Frank Cooley Co. until March 7th, when the company returns from Hilo and opens with a matinee. Tonight will also be the last chance to see the Passion Play. Both shows can be seen for one admission at the Orpheum.

At the annual meeting of Alexander & Baldwin, which was held this morning, the old board of officers was re-elected to serve during the ensuing year.

The Supreme Court this morning granted the motion of J. L. Holt to withdraw his appeal in the matter of the estate of H. W. Holt.

BULLETIN ADS. PAY

Fine Job Printing at the Bulletin.

Wilder The Man

Charles T. Wilder is to be the new Tax Assessor to succeed James Holt.

The statement was made this morning that the position has been offered Henry Hapal and George Smithies and they have each refused to accept. Charles Wilder is next in line and he will probably get the prize.

It is claimed that Eben Low is the only one of the talked-of candidates to whom the Governor has not proffered the position, but the supposition is that Low is not on the Governor's slate.

REPRESENTATIVE SILVA PROTESTS FOR PEOPLE

With Attorney White He Asks Governor To Stop Sale

The protest by the von Holt interests is not the protest that has been generally talked by Kauai people in connection with the now postponed sale of sisal lands to the Knudsen at Mana, Kauai.

The story told about Lihue is to the effect that independent interests have protested against the proposed disposal of the land on an exclusively sisal basis. The claim is that this involves giving the Knudsen 1500 or more acres of land and shutting out everyone else.

This land in dispute is represented as barren sand capable of producing

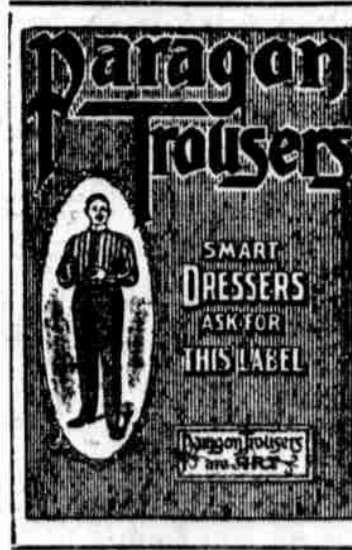
(Continued on Page 4)

The will of the late Frederick Wundenburg was admitted to probate today, and Judge Lindsay ordered that letters testamentary issue to Elsie M. Wundenburg without bond.

SUGAR
SAN FRANCISCO, Cal., Feb. 21.—SUGAR: Beets, 88 analysis, 9s. 0 3/4d. Parity, 4.06 cents. Previous quotation, 9s. 11 3/4d.

"All To The Good"

THIS LABEL STANDS FOR
QUALITY



PARAGON TROUSERS are custom tailored, and the best of everything is employed in their construction.

The cloth is shrunk in Cold Water, which knits the fabric together, preventing shrinkage through dampness.

Every good dresser must have a few extra pairs of trousers; now is the time for

New Spring Styles

Finest Material and Make.

THE KASH CO., LTD.
Corner of Fort and Hotel Streets.

The One You Trust

with the management of your business or private affairs may be honest, sagacious, faithful, and experienced,—and, then again, he may not.

He may have all the good attributes and still lack an essential—the OPPORTUNITY for SAFE INVESTMENT.

Our reputation is established; and, owing to the great amount of business we handle, opportunities for safe investment occur every day.

**Hawaiian Trust
Company, Ltd.**
Fort St. Honolulu

S.S. Hilonian, Feb. 25 will carry our next shipment of pineapples and bananas to the Coast.

ISLAND FRUIT CO.,
72 S. KING. PHONE 15.

J. Hopp & Co.

FURNITURE

Good Meals at
Young Cafe

Popular Prices

A POOR JOKE

You've heard that joke pretty often about stumbling out of bed to heat the milk for Baby! It's out of date, now. The THERMOS BOTTLE keeps milk warm all night.

Hollister Drug Co.
FORT STREET.



The Heywood Shoe For Men

We have another big shipment of this famous shoe just in, in two styles.

Style No. 463 is a Vici Kid, with soft, flexible Welt and Medium Round Toe, from the Highland Last. Style No. 508 is exactly the same shoe with Rubber Heels. Price \$5.00.

Price \$4.50
**Manufacturers' Shoe
Co., Ltd.**
P. O. Box 469. Phone 282

MASONIC TEMPLE WEEKLY CALENDAR MONDAY Oceanic Lodge—Stated. TUESDAY Perfection—Communication, WEDNESDAY THURSDAY FRIEDAY Perfection—Fourteenth Deg SATURDAY Pacific—Second Degree

HARMONY LODGE, No. 3, I. O. O. F. Meets every Monday evening at 7:30 in K. of P. Hall, Fort Street.

MYSTIC LODGE, No. 2, K. of P. Meets every Tuesday evening at 7:30 in K. of P. Hall, corner Fort and Beretania.

KAHU LODGE, No. 1, K. of P. Meets every Friday evening at 7:30 in K. of P. Hall, corner Fort and Beretania.

HONOLULU LODGE 616, B. P. O. E. Honolulu Lodge No. 616, B. P. O. E., will meet in their hall on King near Fort street every Friday evening.

Wm. McKinley Lodge No. 8, K. of P. Meets every Saturday evening at 7:30 o'clock in K. of P. Hall, corner Fort and Beretania.

HONOLULU AERIE 140, F. O. E. Meets on the 2nd and 4th WEDNESDAY evenings of each month at 7:30 o'clock in K. of P. Hall, corner Beretania and Fort streets.

HAWAIIAN TRIBE No. 1, I. O. R. M. Meets every first and third Thursdays of each month at Knights of Pythian Hall.

THE PLEASANTON Swell rooms en suite with or without baths; with every modern convenience. Rates may be had from

Mrs. J. W. Macdonald, PROPRIETOR. WILDER AVE. and PUNAHOU ST. TELEPHONE 365.

A GOOD SIGN COSTS YOU NOTHING — IT PAYS FOR ITSELF. TOM SHARP, MAKES GOOD SIGNS.

COME NOW! Send in your orders at once to Bo Wo The Finest Jade Jewellery, Etc. The Finest Workmanship on the market here.

Baby Carriages Go Carts Folding Carts Koffschlaeger Co., Limited, King and Bethel Sts.

It can be avoided by using LIQUID SOAP In West's Liquid Soap Dispenser your skin cannot be contaminated if you will adopt this.

Benson, Smith & Co., Ltd., Hotel and Fort Sts.

Koenig's Malt Extract It will build you up again. CHAMBERS DRUG CO., FOR. FORT AND KING STS. PHONE 131.

TILLMAN'S CANNED GOODS We have a big, fresh lot of them just in. They are just as good as ever. Phone

J. M. LEVY & CO., Tel. 76 Family Grocers

Holes in Shoes are sure promoters of disease. Pneumonia frequently follows an ordinary cold and either may be brought on by wearing poor shoes. We Repair for \$1.25 VICKERS' SHOE REPAIR SHOP, 1119 UNION ST. P. O. BOX 567.

LOCAL AND GENERAL If you really want it, speak up promptly and get it. Let a BULLETIN Want Ad. do the talking. Auto at hack-fare. Tel. 405. Panama hats cleaned at the Globe. Phone 452 for a hack. Bethel St. Hack Co.

The Hoffman Saloon serves Red Hot free with a drink every afternoon. Assistant Attorney General E. W. Sutton returned from Hilo on the Kinau. The Fashion Saloon is now serving an excellent dinner between 4 and 6 o'clock.

Mr. Jamieson and C. Merriam were passengers arriving in the Iwaland yesterday. R. L. Wilcox and wife came from Kaula last Saturday on the steamer W. G. Hall.

A dance in honor of Washington's birthday was given last Saturday night in the Knights of Pythias Hall. There will be a special meeting of Pacific Lodge No. 822, A. F. and A. M., this evening at 8 o'clock in the Masonic Temple.

There will be a regular meeting of Oceanic Lodge No. 371, F. and A. M., this evening at 7:30 o'clock for transaction of business. The N. S. Sacks Dry Goods Co. have a new Spring line of millinery, wash materials, and curtains just in, and for sale at attractive prices.

J. Peirson has written that owing to the financial flurry he has had to postpone his contemplated trip to Hawaii to an indefinite date. G. N. Wilcox and Mr. and Mrs. A. S. Wilcox were arrivals on the steamer W. G. Hall, which came in from Kaula last Saturday morning.

The following freight was brought by the Noeau from Hawaii ports: 70 bags Honokaa sugar, 35 head cattle, 2 packages sundries. The Noeau reported the following sugar as ready for shipment on Hawaii: Honokaa, 260 bags; Kukuihaele, 3999. The regular meeting of the Guild and Woman's Auxiliary of St. Andrew's cathedral will be held at half past two this afternoon at the residence of Mrs. E. D. Tenney. A full attendance is desired, as the Lenten work will be planned at this meeting.

A Most Excellent Assortment of SUITINGS THE BEST "FITTERS" IN TOWN. W. W. Ahana Co., LIMITED 62 S. KING ST. PHONE 525.

Seeing Easily isn't always a sign of good eyesight. The eye-muscles contract to make up for defective vision. It's only when they get tired of the strain that you suffer from headache and eye-strain. SEE A. N. SANFORD, OPTICIAN BOSTON BLDG. FORT ST. EXCELLENT LAUNDRY WORK done by the FRENCH LAUNDRY with their new FRENCH dry cleaning process. 258 Beretania St. Phone 1491.

Australians Ask That Battleships Visit Them

MELBOURNE, Australia, February 23.—The Government of the Commonwealth is inviting the Pacific fleet of the United States to visit Australia. NEW YORK, N. Y., Feb. 22.—Major General Grant, in a banquet speech this evening, said that, in case of war with Japan, 500,000 troops would be an insufficient garrison for the Pacific Coast.

TURK ISLAND, Bahamas, Feb. 23.—The Nova Scotia steamer Beta, plying between Halifax and Bermuda, has been wrecked. The passengers and crew were saved.

CHICAGO, Ill., Feb. 22.—Followers of William Randolph Hearst met in convention today to form a new national party. Thirty-five States were represented.

DENVER, Colo., Feb. 23.—Father Leo Reinrichs was murdered here today by an Italian anarchist in the presence of the priest's congregation.

LIMA, Peru, Feb. 22.—The President of the Peruvian Republic entertained 2500 officers of the American fleet at a banquet this evening.

MONTEVIDEO, Uruguay, Feb. 22.—The railroads centering here are tied up by a strike.

BELFAST, Ireland, Feb. 23.—An attempt to launch the steamer Rotterdam has resulted in failure. The vessel stuck upon the ways.

LONDON, Eng., Feb. 22.—Great gales along the Coast have damaged shipping. There are many minor wrecks and some losses of life.

PARIS, France, Feb. 22.—Portuguese Republicans predict that the monarchy will be soon overturned and a republic established.

PHILADELPHIA, Pa., Feb. 23.—Action was taken by the police of this city which prevented Socialist gatherings today.

SEATTLE, Wash., Feb. 23.—All the shingle mills in the State of Washington are to be closed.

THE KINAU and the Mauna Loa are loading freight preparatory to sailing. Both steamers brought over an unusual amount of passengers on account of the Floral Parade.

THE OFFICERS of the Inter-Island Company are of the opinion that the new flagship of the fleet, the Mauna Kea, will draw the majority of the Big Island passenger trade away from the Kinau and the Mauna Loa on account of the splendid fittings she has. Nothing new has been learned concerning her schedule. This will not be finally arranged until the crack new boat has arrived here.

SOLITARY AND ALONE, weeping the weep of the lonesome, the schooner Florence Ward this morning is separated from the flotilla of rotten hulks on the Ewa side of the harbor by fully twenty feet. Heretofore, there has always been at least two or three of the mudcrappers hugging her sides or caressing her forehead, i. e., her bowsprit. This is a sad and lonely day for Florence.

ONLY TWO Inter-Island boats leave this port today, and they are the Ke Au Hou and the Noeau, both sailing at 5 o'clock this evening. The Ke Au Hou goes over to Kapaun and several other ports and the Noeau calls at Honokaa and way harbors. They carry the usual amount of freight. THE CHINA IS DUE here Friday morning from the Orient with 600 tons of freight for Honolulu. The Korea will arrive in the harbor March 2d from the Coast with mail and passengers. She sails from San Francisco tomorrow.

IN FOREIGN PORTS

CABLE REPORT OF SAN FRANCISCO MERCHANTS' EXCHANGE. Saturday, February 1. VANCOUVER—Sailed, Jan. 31: Br. S. S. Miowera, for Honolulu. HILO—Sailed Jan. 31: A. H. S. S. Arizonan, for Salina Cruz. Monday, February 3. YOKOHAMA—Arrived Feb. 1: Jap. S. S. Nippon Maru, hence Jan. 20. BRAYS HARBOR—Sailed Feb. 1: Am. schr. C. A. Thayer, for Honolulu. Am. schr. Manila, for Honolulu. SAN FRANCISCO—Arrived Feb. 2: U. S. A. T. Crook, hence Jan. 25. HILO—Arrived, Jan. 31: Am. S. S. Enterprise, from San Francisco. HILO—Sailed Jan. 30: Am. bk. Annie Johnson, for San Francisco. Tuesday, February 4. SAN FRANCISCO—Arrived Feb. 4: O. S. S. Alameda, hence Jan. 29: YOKOHAMA—Sailed, Feb. 4: Jap. S. S. America Maru, for Honolulu. PORT TOWNSEND—Arrived Feb. 4: Am. sp. Jabez Howes, from Kahului. Wednesday, February 5. SAN FRANCISCO—Arrived, Feb. 5: Am. S. S. Hilonian, hence Jan. 28. SAN FRANCISCO—Sailed, Feb. 3: Jap. Rofu, for Hilo. PORT HARTFORD—Sailed, Feb. 5: Am. S. S. Lansing, for Honolulu. SAN FRANCISCO—Sailed, Feb. 5: U. S. A. T. Buford, for Honolulu. Thursday, February 6. SALINA CRUZ—Arrived Feb. 2: Am. S. S. Columbian, from Hilo, Jan. 18. KAHULUI—Arrived Feb. 6: A. H. S. S. Mexican, from Honolulu. Thursday, February 6. SALINA CRUZ—Sailed Feb. 5: A. H. S. S. Texan, for San Diego. Friday, February 7. SAN FRANCISCO—Arrived Feb. 7: Am. bk. R. P. Rithet, hence Jan. 19. SEATTLE—Sailed Feb. 7: A. H. S. S. Nevanan, for Honolulu. Saturday, February 8. SAN FRANCISCO—Sailed Feb. 7: A. H. S. S. Alaskan, for Honolulu. SAN FRANCISCO—Sailed Feb. 8: O. S. S. Alameda, for Honolulu. HILO—Sailed Feb. 3: Am. bk. Mohican, for San Francisco. Monday, February 10. YOKOHAMA—Arrived Feb. 10: S. S. Asia, hence Jan. 28. HILO—Sailed Feb. 7: Am. schr. Compeer, for Eureka. Tuesday, February 11. SAN DIEGO—Arrived, Feb. 10: A. H. S. S. Texan, from Salina Cruz. SAN FRANCISCO—Sailed Feb. 11: Jap. S. S. Hongkong Maru, for Honolulu. KAHULUI—Sailed Feb. 10: A. H. S. S. Mexican, for Kaunapali. HONOIPIU—Arrived, Feb. 11: Am. schr. Honolulu, from San Francisco, Jan. 25. Wednesday, February 12. PORT GAMBLE—Arrived Feb. 11: Am. bk. Kikikat, hence Jan. 21. SAN FRANCISCO—Sailed Feb. 12: Am. S. S. Hilonian, for Honolulu. Thursday, February 13. SAN FRANCISCO—Arrived Feb. 12: Am. bk. Amy Turner, hence Jan. 25. SAN FRANCISCO—Arrived Feb. 13: U. S. A. T. Thomas, hence Feb. 5. HILO—Arrived Feb. 8: A. H. S. S. Nebraskan, hence Feb. 7. HILO—Arrived Feb. 11: Am. bk. Andrew Welch, from San Francisco. YOKOHAMA—Sailed Feb. 13: P. M. S. S. Siberia, for Honolulu (1 day late). EUREKA—Sailed Feb. 13: Am. schr. O. M. Kellogg, for Honolulu. Friday, February 14. SAN FRANCISCO—Arrived Feb. 14: P. M. S. S. Korea, hence Feb. 8. SAN DIEGO—Sailed Feb. 14: A. H. S. S. Texan, for San Francisco. IN FOREIGN PORTS. Saturday, February 15. EUREKA—Arrived Feb. 14: Am. schr. Eva, hence Jan. 22. NEWCASTLE—Sailed, Feb. 13: Br. S. S. Elvaston, for Honolulu. HILO—Sailed Feb. 12: Am. S. S. Enterprise, for San Francisco. HILO—Sailed, Feb. 13: A. H. S. S. Mexican, for Salina Cruz. KIHEI—Arrived, Feb. 13: Am. S. S. Lansing, hence Feb. 13. HONOIPIU—Sailed Feb. 14: Am. schr. Honoipu, for San Francisco, via Hana. Monday, February 17. VANCOUVER—Arrived Feb. 14: Br. S. S. Aorangi, hence Feb. 6. HANA—Arrived Feb. 15: Am. schr. Honolulu, from Honolulu, Feb. 14. YOKOHAMA—Arrived, Feb. 17: P. M. S. S. Mongolia, hence Feb. 6. YOKOHAMA—Sailed Feb. 14: Fr. S. S. Malta, for Honolulu. KAHULUI—Sailed, Feb. 15: A. H. S. S. Nebraskan for San Francisco. KIHEI—Sailed Feb. 16: Am. S. S. Lansing for Port Hartford. Wednesday, February 19. SALINA CRUZ—Arrived Feb. 17:

Friday, February 21. SAN FRANCISCO—Sailed Feb. 20: Am. bk. R. P. Rithet, for Honolulu. U. S. A. T. Crook, for Honolulu. A. H. S. S. Texan, for Honolulu. IN FOREIGN PORTS Monday, February 24. AUCKLAND—Arrived Feb. 15: Nor. bk. Concordia, hence Jan. 8. SAN FRANCISCO—Arrived Feb. 26: Am. S. S. Enterprise, from Hilo Feb. 12. KAHULUI—Sailed Feb. 21: A. H. S. S. Nevanan, for Honolulu. HILO—Arrived Feb. 18: Am. bk. G. C. Tobey, from Honolulu. HILO—Arrived Feb. 19: Br. S. S. Hampstead, from Honolulu. HILO—Sailed Feb. 20: Am. bk. St. Katherine, for San Francisco. MAHUKONA—Arrived Feb. 21: Am. schr. H. C. Wright, from San Francisco. HONOIPIU—Arrived, Feb. 24: Am. schr. Helene, from Newcastle. NEWCASTLE—Sailed, Feb. 23: Am. schr. R. C. Slade, for Honolulu. BRISBANE—Arrived, Feb. 24: Br. S. S. Miowera, hence Feb. 8. SAN FRANCISCO—Arrived Feb. 24: A. H. S. S. Nebraskan, from Kahului.

TIDES Table with columns for High Tide, Low Tide, Sun Rise, Moon Rise, etc. for various months.

ARRIVED Sunday, February 23. Stmr. Noeau, Mitchell, from Hawaii ports, at 2:55 a. m. Stmr. Ke Au Hou, Tallett, from Kaula ports, at 4:20 a. m. Stmr. Iwaland, Naopala, from Maui and Molokai ports, at 5:10 a. m.

SAILING TODAY A. H. S. S. Nevanan, Greene, for San Francisco, at 5 p. m. Stmr. Noeau, Mitchell, for Hawaii ports, at 5 p. m. Stmr. Ke Au Hou, Tallett, for Kaula ports, at 5 p. m.

SAILING TOMORROW Stmr. Kinau, Clark, for Hilo and way ports, at noon. Stmr. Iwaland, Naopala, for Maui and Molokai ports, at 5 p. m. Stmr. W. G. Hall, Thompson, for Kaula ports, at 5 p. m. Stmr. Mauna Loa, Simerson, for Maui and Hawaii ports, at noon. M. N. S. Hilonian, Johnson, for San Francisco, at 10 a. m.

DUE TOMORROW Fr. S. S. Malta, from Yokohama.

SAILING TOMORROW Stmr. Kinau, Clark, for Hilo and way ports, at noon. Stmr. Iwaland, Naopala, for Maui and Molokai ports, at 5 p. m. Stmr. W. G. Hall, Thompson, for Kaula ports, at 5 p. m. Stmr. Mauna Loa, Simerson, for Maui and Hawaii ports, at noon. M. N. S. Hilonian, Johnson, for San Francisco, at 10 a. m.

DUE FRIDAY U. S. A. T. Crook, Williams, from San Francisco. P. M. S. S. China, Friel, from Yokohama.

PASSENGERS ARRIVED Per stmr. Iwaland, from Maui and Molokai ports, Feb. 23—F. H. Hayes, Selden, C. A. Hartwell, Mrs. C. A. Hartwell, Mr. Jamieson, C. Merriam, Mrs. Holch, Master Holch, Mrs. Ed. Duvauchelle and child, Master U. Duvauchelle, H. Matunono, 6 deck.

CANADIAN COASTWISE LAW Ottawa, Jan. 19.—The Dominion government has just passed a vitally important order in council marking the time when Canada is able to handle its own shipping business. The Canadian Gazette shows that this was done in deference to the demands of the maritime provinces cancelling the orders in council, which admitted ships or vessels of the following countries to the coasting trade of the Dominion on the same terms and conditions applicable to Canadian vessels: Italy, Germany, the Netherlands, Sweden, Norway, Austria-Hungary.

A Wet Sheet and a flowing sea and a wind that follows fast. Such is yachting. Let us build that yacht for you. Charles D. Walker, BOAT AND MACHINE WORKS, King near Alapai.

A. H. S. S. Arizonan, from Hilo Jan. 31. SALINA CRUZ—Sailed Feb. 18: A. H. S. S. Columbian, for San Diego. SAN FRANCISCO—Arrived Feb. 18: Am. bk. Annie Johnson, from Hilo Jan. 31. GAYOTA—Arrived Feb. 18: Am. sp. Falls of Clyde, hence Feb. 5. YOKOHAMA—Sailed Feb. 19: P. M. S. S. China, for Honolulu. SAN FRANCISCO—Arrived Feb. 19: Jap. S. S. America Maru, hence Feb. 13. Am. bk. Mohican, from Hilo Feb. 2. Thursday, February 20. KAHULUI—Sailed, Feb. 19: Am. ship Erskine M. Phelps, for Delaware Breakwater. KAHULUI—Arrived, Feb. 20: A. H. S. S. Nevanan, from Honolulu.

Friday, February 21. SAN FRANCISCO—Sailed Feb. 20: Am. bk. R. P. Rithet, for Honolulu. U. S. A. T. Crook, for Honolulu. A. H. S. S. Texan, for Honolulu. IN FOREIGN PORTS Monday, February 24. AUCKLAND—Arrived Feb. 15: Nor. bk. Concordia, hence Jan. 8. SAN FRANCISCO—Arrived Feb. 26: Am. S. S. Enterprise, from Hilo Feb. 12. KAHULUI—Sailed Feb. 21: A. H. S. S. Nevanan, for Honolulu. HILO—Arrived Feb. 18: Am. bk. G. C. Tobey, from Honolulu. HILO—Arrived Feb. 19: Br. S. S. Hampstead, from Honolulu. HILO—Sailed Feb. 20: Am. bk. St. Katherine, for San Francisco. MAHUKONA—Arrived Feb. 21: Am. schr. H. C. Wright, from San Francisco. HONOIPIU—Arrived, Feb. 24: Am. schr. Helene, from Newcastle. NEWCASTLE—Sailed, Feb. 23: Am. schr. R. C. Slade, for Honolulu. BRISBANE—Arrived, Feb. 24: Br. S. S. Miowera, hence Feb. 8. SAN FRANCISCO—Arrived Feb. 24: A. H. S. S. Nebraskan, from Kahului.

Friday, February 21. SAN FRANCISCO—Sailed Feb. 20: Am. bk. R. P. Rithet, for Honolulu. U. S. A. T. Crook, for Honolulu. A. H. S. S. Texan, for Honolulu. IN FOREIGN PORTS Monday, February 24. AUCKLAND—Arrived Feb. 15: Nor. bk. Concordia, hence Jan. 8. SAN FRANCISCO—Arrived Feb. 26: Am. S. S. Enterprise, from Hilo Feb. 12. KAHULUI—Sailed Feb. 21: A. H. S. S. Nevanan, for Honolulu. HILO—Arrived Feb. 18: Am. bk. G. C. Tobey, from Honolulu. HILO—Arrived Feb. 19: Br. S. S. Hampstead, from Honolulu. HILO—Sailed Feb. 20: Am. bk. St. Katherine, for San Francisco. MAHUKONA—Arrived Feb. 21: Am. schr. H. C. Wright, from San Francisco. HONOIPIU—Arrived, Feb. 24: Am. schr. Helene, from Newcastle. NEWCASTLE—Sailed, Feb. 23: Am. schr. R. C. Slade, for Honolulu. BRISBANE—Arrived, Feb. 24: Br. S. S. Miowera, hence Feb. 8. SAN FRANCISCO—Arrived Feb. 24: A. H. S. S. Nebraskan, from Kahului.

TIDES Table with columns for High Tide, Low Tide, Sun Rise, Moon Rise, etc. for various months.

ARRIVED Sunday, February 23. Stmr. Noeau, Mitchell, from Hawaii ports, at 2:55 a. m. Stmr. Ke Au Hou, Tallett, from Kaula ports, at 4:20 a. m. Stmr. Iwaland, Naopala, from Maui and Molokai ports, at 5:10 a. m.

SAILING TODAY A. H. S. S. Nevanan, Greene, for San Francisco, at 5 p. m. Stmr. Noeau, Mitchell, for Hawaii ports, at 5 p. m. Stmr. Ke Au Hou, Tallett, for Kaula ports, at 5 p. m.

SAILING TOMORROW Stmr. Kinau, Clark, for Hilo and way ports, at noon. Stmr. Iwaland, Naopala, for Maui and Molokai ports, at 5 p. m. Stmr. W. G. Hall, Thompson, for Kaula ports, at 5 p. m. Stmr. Mauna Loa, Simerson, for Maui and Hawaii ports, at noon. M. N. S. Hilonian, Johnson, for San Francisco, at 10 a. m.

DUE TOMORROW Fr. S. S. Malta, from Yokohama.

SAILING TOMORROW Stmr. Kinau, Clark, for Hilo and way ports, at noon. Stmr. Iwaland, Naopala, for Maui and Molokai ports, at 5 p. m. Stmr. W. G. Hall, Thompson, for Kaula ports, at 5 p. m. Stmr. Mauna Loa, Simerson, for Maui and Hawaii ports, at noon. M. N. S. Hilonian, Johnson, for San Francisco, at 10 a. m.

DUE FRIDAY U. S. A. T. Crook, Williams, from San Francisco. P. M. S. S. China, Friel, from Yokohama.

PASSENGERS ARRIVED Per stmr. Iwaland, from Maui and Molokai ports, Feb. 23—F. H. Hayes, Selden, C. A. Hartwell, Mrs. C. A. Hartwell, Mr. Jamieson, C. Merriam, Mrs. Holch, Master Holch, Mrs. Ed. Duvauchelle and child, Master U. Duvauchelle, H. Matunono, 6 deck.

CANADIAN COASTWISE LAW Ottawa, Jan. 19.—The Dominion government has just passed a vitally important order in council marking the time when Canada is able to handle its own shipping business. The Canadian Gazette shows that this was done in deference to the demands of the maritime provinces cancelling the orders in council, which admitted ships or vessels of the following countries to the coasting trade of the Dominion on the same terms and conditions applicable to Canadian vessels: Italy, Germany, the Netherlands, Sweden, Norway, Austria-Hungary.

A Wet Sheet and a flowing sea and a wind that follows fast. Such is yachting. Let us build that yacht for you. Charles D. Walker, BOAT AND MACHINE WORKS, King near Alapai.

New Spring Lines

Our Spring Millinery Opening

will be continued for a few days. We are making a gorgeous display of

Spring Pattern Hats

including New York styles and the famous

Gage Hats

and our own creations. Hats that were selected by our Eastern buyers; styles, colors, and shapes that are absolutely correct. You are cordially invited to see this display without feeling at all obliged to buy.

New Wash Materials--Pongette Soie

IN BROWN AND PONGEE COLOR 35¢ a yd.
 WHITE POBLINETTE, at 40¢ a yd.
 WHITE REP. extra fine 40¢ a yd.
 FRENCH PIQUE extra quality. 40¢ a yd.

CURTAINS

Point de Sprit Net
 EXTRA FINE QUALITY, 54 inches wide 50¢ a yd.

New Curtain Swiss
 In dotted and fancy figures. A large variety of patterns. SIX YARDS FOR \$1.00

New Dotted Swiss Curtains
 with hemstitched ruffles. Just the kind of curtains for bedrooms; several patterns to select from, at \$1.50 A PAIR!

New Arabian Net
 for curtains, double thread, very durable, 54 inches wide 65¢ a yd.

N. S. Sachs Dry Goods Co.
 LIMITED

Aromatic Ginger Ale

The drink for the people who enjoy something a little better than the ordinary aerated waters can be had only from

CONSOLIDATED SODA WORKS CO., LTD.
 TELEPHONE 71. G. S. LEITHEAD, Manager.

VICTOR TABLE



Coyne Furniture Co., Ltd.

Lots of People

are "getting along" with poor lights because they think they are being economical. They just don't know that Electric Light is not much more expensive than the coal oil lamp. And they judge of the price by the superior merits of Electricity. We should like to see some of these people; we would submit a few facts and figures that would surprise them. ONE fact is this—the only good light for evening use is

Incandescent Light

Hawaiian Electric Co., Ltd.,
 Office, KING ST. near ALAKEA. PHONE 390.

Thoroughbred Registered Jersey Bulls

The pure-bred Jersey Bulls, Ojibway of Y. B., A. J. C. C., No. 60247, and Guenon Lad, 2nd A. J. C. C., No. 62304, at service at \$10.
Tel. 890 The Pond Dairy

NATIONAL GUARD MAKES FINE SHOWING

Regiment Inspected At Aala Park By Maj. Dunning

The annual inspection of the National Guard of Hawaii was held at Aala Park Sunday afternoon by Major Dunning, U. S. A. All of the Honolulu companies and the band were out, and practically all the men of each company were present, no company having more than two absentees.

The showing made by the regiment was pronounced by Major Dunning to be very satisfactory indeed. The men having been drilled for the past several Sundays and almost every night for some weeks, the result of the hard work done by both men and officers was apparent in the snap and precision with which they went through their evolutions. Major Dunning said:

"The inspection was good. I found the men a fine-appearing, strong and healthy lot, and well drilled. Their work was very good and they appear to be a willing lot. I found their equipment clean and in good order, remarkably so for equipment that is not seen often than these men see theirs."

The regimental officers and company commanders were: Colonel Sam Johnson, Lieutenant Colonel Coyne, Major Riley, Captain Gorman, acting major of the Second Battalion; Captain Cummins, the Regimental Adjutant; Merlin M. Johnson, the Regimental Quartermaster and Commissary; First Lieutenants Townsend and Whitehouse. The First Company was commanded by Lieutenant Cook, the Second Company by Captain Coster, the Third Company by Captain Neely, the Fourth Company by Captain Kea, the Signal Corps by Lieutenant Angus and the Ambulance Corps by Captain Moore. In no company were there over two members absent from the drill.

The inspection lasted from 1 o'clock until 4. At its conclusion the regiment marched in review past Governor Frear, who, with a large party, occupied the band stand. With him were the officers of the general staff, Captain Otwell, of the Engineers, Senators Lane, Chillingworth and Knudsen, Representatives Hughes and Castro, Supervisors Huxtable, Fern and Archer, and a number of citizens. Among the staff officers were Colonel and Adjutant General J. W. Jones, Lieutenant Colonel and Surgeon General C. B. Cooper, Quartermaster General J. W. Short, Major J. W. Pratt, Lieutenant Colonel Fisher, Lieutenant Colonel Ziegler and Lieutenant Smithies.

On the return to the drill shed the men were thanked by Colonel Johnson for their hard work and the good showing they had made.

WU VISITS SOCIETIES

During Ambassador Wu's short stay here he visited many Chinese societies. Following the Commercial Club luncheon he visited the See Yup Society, the Chinese Students' Alliance of Hawaii, a branch of the World's Chinese Students' Federation. On his return he was driven to the Chinese Consulate, where he had lunch before he and his party went out to Punahou to see the Floral Parade, and thence to the United Chinese Society, where a reception was held in his honor.

Ambassador Wu, it is said, advised his countrymen to be members of one of a few substantial societies and warned them against forming numerous other clubs or societies. The various clubs and societies were beautifully decorated in his honor.

CHILDREN CELEBRATED

(Special to The Bulletin) Walluku, Maui, Feb. 21.—The pupils of the Walluku public school will commemorate Washington's birthday this Friday evening at the school auditorium. The program consists of fancy drills, piano duets, and choruses. Principal C. E. Copeland and his corps of assistants have been hard at work drilling the children for this evening's exercises, and those who will attend it will have great surprises in store for them.

Fine Job Printing at the Bulletin.

For Rent

\$12.50—House on Gulick Ave., 3 Bedrooms, near King St.
 \$12.00—Furnished Cottage at Manoa Valley, 2 Bedrooms, Ideal Country Home; adjoining stream.

P. E. R. Strauch
 Waity Bldg. 74 S. King St.

PYTHIANS CELEBRATE FOUNDING OF ORDER

Attend Special Service Held At Methodist Church

The Knights of Pythias celebrated on Wednesday, the 19th, the forty-fourth anniversary of the founding of the Order. It was also celebrated in United States, Canada, Mexico, Cuba, the Philippines and China, by the 800,000 men and 7000 women who make up the growing Order.

Honolulu Temple No. 1, Rathbone Elsters, gave a chowder and card party at the K. of P. hall and it was attended by 150 people. On Friday evening 200 brothers of the primary lodges held a smoker. Dr. Sinclair gave an exhibition of legerdemain, and Ed Towse a stereopticon lecture on Washington. Augustus Doering delivered a short address on Justus H. Rathbone, founder of the order.

Last night the Pythian societies turned out in a body to hear the eloquent discourse of Rev. David Crane at the Methodist Church. The Pythian Sisters were present. Special music was furnished by Mrs. Hare and Miss Hall.

"Thy Love To Me Was Wonderful," 2 Samuel 1:26, was Mr. Crane's text. His sermon in part was as follows:

In the year 1864, when the storm of the rebellion was sweeping over this land of ours—when brother was at war with brother, over the black face, brother of them both—when it seemed that fratricide was destined to sweep away all the affections between man and man, God chose to swing alongside of the righteous pulpit and press this fraternal society, that these allied forces might reside in the hearts of men the love which they ought to bear one toward the other. On February 19 of that year, Justus R. Rathbone of Washington, D. C., together with some five or six other men, brought into existence the organization known as the Knights of Pythias, which withstood the thunders of rebellion, and the hail and fire of awful war, and has grown with the years until it stands today, with more than eight hundred thousand knighted men to declare its eternal truths.

Of the many lodges now operating, our fair city boasts of three, aggregating more than three hundred and fifty members, together with a lodge of Uniform Rank, and also a lodge composed of Pythian Sisters. Representatives from these several lodges have met with us here tonight, in keeping with a time-honored custom of the Order, to worship the God we love. We welcome you, my friends, and as together we study the splendid principles of your order, we, like Dionysius of old, would fain be admitted to your mystic circles.

Several features of the organization, aside from its cardinal principles, go to commend its existence and worth in the world, namely: its perfect government, its strict discipline, and its practical workings. I must confine my remarks, however, and that briefly, to the cardinal principles of the Order—friendship, benevolence, and charity.

KAUAI JURORS

Following are the jurors drawn for the Kauai term of court by Judge Hardy Feb. 21:

Grand Jury—Called for Wednesday, March 4th, 10 a. m.: C. B. Gray, A. Gandall, E. McCriston, F. Eggerking, A. Thellen, W. A. Wright, H. C. Sheldon, Joaquin Soupp, W. K. Schultze, H. Schultz, J. R. Myers, W. Schieber, James Edwards, L. L. Mahn, C. W. Grote, H. A. Peiler, Louis Conradt, H. Wolters.

Trial Jury—Called for Friday, March 6th, 10 a. m.: H. Andermann, Jr., Louis Hanohano, W. Hastie, Henry Holl, James A. Apao, E. B. Angresen, H. A. Hadley, John Louis, W. Ekekeia, Domingo Gomes, C. Bomke, Theo. Blackstad, C. Jacobsen, R. Manthel, M. J. Carvalho, Frank Holl, M. Frias, Thomas Neal, H. Wramp, Dan Lovell, Gus. Meyer, H. Myhre, R. Cope, Joseph Aka, Antonio Perry, Robert Kanealii.

BUDDHIST ON MAUI

(Special to The Bulletin) Walluku, Maui, Feb. 21.—The Buddhist high priest Shimamura arrived in Walluku from Lahaina last Saturday afternoon and men, women and children of his faith went out to Walkapu road with flags and banners to meet him and escort him into town. The Japanese band of five members led the long procession into town and their weird music made the spectators yearn for Berger's band. The high priest held nightly services at his church on Market street this week which were greatly attended by the followers of Buddha.



Ayer's Cherry Pectoral

is entirely free from narcotics or poison of any kind. It is the great remedy the world over for colds, coughs, croup, whooping-cough, influenza, la grippe, and all bronchial complaints.

Accept no substitute or cheap and worthless imitation. Be sure you get Ayer's Cherry Pectoral.

Put up in large and small bottles.

Prepared by Dr. J. C. Ayer & Co., Lowell, Mass., U. S. A.

Tourists' Excursion

TO THE Volcano, Kilauea

RARE OPPORTUNITY TO VISIT THE GREAT NATURAL WONDER OF THE PACIFIC FOR \$51.00.

The S. S. "Kinau" will leave Honolulu on Tuesday, February 25th, at noon, arriving at Hilo at two o'clock p. m. of the next day, where the party will remain until Thursday, affording an opportunity to visit "Rainbow" Falls and the other points of interest in the neighborhood.

Thursday morning at seven o'clock the party will leave by train for Glenwood, thence by stage, nine miles, to the Volcano, arriving there at eleven o'clock a. m.

Here the party will remain until Sunday morning. The two and a half days will quickly pass in this wonderful land; among the attractions besides the Volcano, are "Kilauea Iki," the seven craters, the sulphur banks, the fern and koa forests.

Sunday morning at seven o'clock the party will leave by stage to connect with the S. S. "Mauna Loa," sailing from Honoauao at noon. The trip is along the coast, past the scenes of the lava flows. The steamer anchors for the night at Kealahou Bay, at which point Captain Cook was killed, one year after his discovery of the Islands, and here a monument has been erected to his memory. Those wishing to enjoy a beautiful carriage drive may leave the steamer at Kealahou and go overland to Kailua, 20 miles distant, and rejoin the steamer at that point, the cost per passenger being \$2.50 extra for this drive. The steamer leaves Kailua at noon Monday and arrives in Honolulu Tuesday, March 3rd, at daylight.

The round trip ticket is \$52.00, which covers every necessary expense of the trip to the Volcano and return, but does not include the cost of horses or carriages for side trips in Hilo and at the Volcano.

Don't be dissuaded from taking this trip. It is an opportunity of a lifetime. Comfortable transportation, good hotels, and most picturesque scenery.

For tickets and information regarding the excursion apply to

HENRY WATERHOUSE TRUST COMPANY, LIMITED
 Cor. Fort and Merchant Sts., Honolulu.

MRS. PUANI GIVES ELABORATE LUAU

The pa-u riders who took part in the Floral Parade were given a royal entertainment at the place of Mrs. Lizzie Puani at Waikiki last Saturday night. Over two hundred persons sat down to the elaborate luau which had been spread, and during the evening dances, as well as an exhibition of old-fashioned hulas, were enjoyed.

The hula girls were Miss Mary George, Miss Esther Kapuahuwani and Mrs. Eddie Wahilani, while Kanuka looked after the musical end in the gourd-beating and bean-shaking line.

The place where this took place is right at the edge of Kapiolani Park, beautifully located, and on a moonlight night Mrs. Puani's entertainments are ideal.

WE GUARANTEE THE QUALITY OF ALL THE Meats

WE SELL Try Us WITH AN ORDER.

C. Q. Yee Hop & Company

Telephone 251

WITH ONLY \$1.00

per week you can get a fine

Howard, Waltham or Elgin Watch

SEE US RIGHT NOW.

J. A. R. Vieira & Co.
 113 HOTEL ST., HONOLULU.

FIRE!

Don't holler before you're hurt. You can always raise the wind by selling your diamonds, watches or jewelry to

J. CARLO,
 1018 NUUANU NEAR KING

HATS

are made in this shop with the same amount of attention to detail that is given the art of trimming in mainland places.

MRS. DUNN'S SHOP,
 Harrison Block.

Wah Ying Chong Co.

King Street, Ewa of Fishmarket.

DRY GOODS AND FURNISHING GOODS OF EVERY DESCRIPTION.

THE JAPANESE Labor Union

Employment Office supplies all Nationalities to plantations, contractors and shipping.

YOSHIKAWA,
 163 KING ST.

BREAD

FINEST QUALITY in the city.

Vienna Bakery
 PHONE 197.

Ohla Cord Wood For Sale

HONOLULU FIRE WOOD CO., 98 King St. and Hotel and Smith Sts. Tel. White 1698.

S. SAIKI,

Bamboo Furniture Made to Order. Picture Framing a Specialty.
 563 S. BERETANIA ST. TELEPHONE 497.

"For Rent" cards on sale at the Bulletin office.

Short Kimona Jackets, Silk Kimonos, Ladies' Silk Shirt Waists, Patterns,

Everything from Japan

JAPANESE BAZAAR

FORT NEXT THE CONVENT.

FINEST FIT

and cloth of A-1 quality can be purchased from

SANG CHAN,
 McCANDLESS BLDG., P. O. Box 961. Telephone 931.

COOKING

can be done very easily with your Japanese servant by purchasing an English and Japanese Cook Book.

AT ALL BOOKSTORES.

LUNCHES and DRINKS

The most popular place in town.

The Fashion Saloon,
 Hotel St. near Fort. Jack Souilly. Jack Roberts.

Sanitary Steam Laundry

PHONE 71.

Branch: TERRITORIAL MESSENGER SERVICE. PHONE 361

WHY NOT let us have your business to advertise?

HAWAII PUBLICITY CO.,
 82 MERCHANT ST.

KEYSTONE-ELGIN WATCHES INGERSOLL WATCHES
 At All Watchdealers.

Jos. Schwartz,
 Agent for Hawaiian Islands, Cor. FORT and KING Sts., Honolulu.

For Expert Repairs on Bicycle, Motorcycle, Automobiles, etc., call on

J. E. Santos,
 Back of Peter's, PHONE 361. UNION ST.

A. Phillips & Co.
 Wholesale Importers and Jobbers.

EUROPEAN AND AMERICAN DRY GOODS
 FORT and QUEEN STS.

BUILDING MATERIAL
 OF ALL KINDS. DEALERS IN LUMBER.

ALLEN & ROBINSON,
 Queen Street : : : : Honolulu.

PICTURES FOR ALL

See Our Window 5 CENTS TO 30 CENTS

Wall, Nichols Co., Limited

WASHINGTON'S BIRTHDAY

DECORATIONS

WOMEN'S EXCHANGE.

BAMBOO FURNITURE

Of All Kinds And Descriptions At Reasonable Prices. SEE OUR DISPLAY.

S. TATANI
 Emma St. near Beretania.

BEAUTIFUL PICTURES AND TASTY FRAMES

reduced to a low price at

PACIFIC PICTURE FRAMING CO.,
 1050 NUUANU.

R. MIYATA & CO.,
 CONTRACTORS, BUILDERS, PAINTERS, PAPER HANGERS and MASON WORKERS.

Second Hand Lumber, Doors and Sashes Bought and Sold. KING ST., PALAMA JUNCTION. PHONE 994.

EVENING BULLETIN

DAILY and WEEKLY Published by BULLETIN PUBLISHING CO., LTD.
At 130 King Street, Honolulu, Territory of Hawaii.

Daily every day except Sunday. Weekly issued on Tuesday of each week.

MEMBER OF THE ASSOCIATED PRESS.

Walter R. Farrington, Editor

SUBSCRIPTION RATES PAYABLE IN ADVANCE.

EVENING BULLETIN		WEEKLY BULLETIN	
Per Month, anywhere in U.S.	\$.75	Per Six Months, anywhere in U.S.	\$ 4.00
Per Quarter, anywhere in U.S.	2.00	Per Year, anywhere in U.S.	1.00
Per Year, anywhere in U.S.	8.00	Per Year, anywhere in Canada	1.50
Per Year, postpaid, foreign	11.00	Per Year, postpaid, foreign	2.00

CIRCULATION LARGEST OF ANY NEWSPAPER PUBLISHED in the Territory of Hawaii.

Tel. Editorial Rooms, - 185
Business Office, - 256

Entered at the Postoffice at Honolulu as second class matter.

MONDAY FEBRUARY 24, 1908

AMERICANIZATION BY SETTLEMENT ASSOCIATION.

Governor Frear has said in one of his public addresses on the settlement of public lands that the Settlement Association allowed under our present land laws "is the worst of all." It is bad enough. There is no doubt about that.

Here is a sample of how the Settlement Association has operated in several instances of which the incident related in a type. There is no necessity for using names, but they can be produced.

In the effort to "Americanize" Hawaii certain lands on which the lease had expired were turned over to a settlement association. The land had been under lease to a prosperous sugar plantation. Presumably the citizens composing the Settlement Association were to rescue this land from the blight of the corporation and its Oriental laborers. That is the basis of the land-law theory.

The land was regularly parceled out to members of the association. The member to which the Bulletin has special reference was a full-blooded, properly registered American from the mainland—of good character, good health, and good family.

He took a homestead of eighty-odd acres. He "proved up" according to law. He lived in a shack, and his family roughed it with him for the required period.

Is that American homesteader on his land today?

He became an absentee landlord as quickly as the law allowed.

He still owns the land. Not only that. He is gaining an income of \$419, a year from it under a lease to the sugar plantation. The Oriental laborer and the sugar-cane and the corporation are still supreme in that sugar field.

The only difference from the former condition is this: The people, as represented in the Territorial Government, have lost their ownership in that land. It is the "homesteader's" to do with as he pleases. He, instead of the people, is leasing the land to the "feudal employer of serfs" at a higher price than the Territory received. The net result is loss of the land and increased expense for the plantation.

Someone may say, "Well, the fact that one more man has secured a source of income from the sugar plantation is a gain in the distribution of wealth hitherto held by a grasping corporation."

This sounds well, until you stop to realize that the demand for continued dividends has very probably forced the plantation manager to replace a number of citizen employes with cheap aliens in order to even up the additional price he is paying the homesteaders for the lease of their lands.

This is Americanization with a vengeance.

The homesteader referred to is still in the islands and in public employ. He has not done a thing that is wrong, but as soon as he has gathered sufficient surplus he intends to return to the mainland where he can educate his children inexpensively "without sending them to school with Orientals."

A little more "Americanization" of this type and Hawaii will be in the hands of the outlanders for keeps. When this man took up the land the probability of his remaining with it longer than was necessary to prove up was undoubtedly as remote as it could be. He took advantage of one of the follies of the territorial and the Territorial land laws to make some money, by the way.

Had men of the European immigrant class been put on that land under a straight homestead proposition the probabilities of their remaining with the land and growing cane for the plantation would have been very good. It would have meant a home to them.

And there would have been no increased rental expense to be offset by cheaper labor in some other department of the sugar enterprise.

OLD FISHMARKET FOR ENTERTAINING FLEET

Editor Evening Bulletin: I see Secretary Mott-Smith is calling a meeting to discuss plans for the entertainment of the navy boys and invites suggestions. Yesterday I was down past the old fishmarket, and it occurred to me that a grand place of entertainment could be made out of that big building.

I would suggest that (if this shed is available) it be made into a place of recreation. I would fence it all round except on the mauka side with wire netting; I would board up the mauka side to keep out the wind and dust. For the interior arrangements I would have on the mauka side an asphalt tennis court, along the Ewa side a bowling alley, on the mauka side, where the board fence would provide shelter, I would have several billiard and bagatelle tables. I would build several booths in convenient corners, where soft drinks, coffee, light refreshments, fruits, and candies could be sold. Around about these booths I would have numerous tables and chairs and good, substantial pot plants, making an inviting resting-place. The building should be well illuminated so that games could be played at night. I would have a quiet club to play afternoons and evenings. I would let the booths to respectable caterers who would charge fair but not extortionate prices for refreshments. I would make small charges for the use of the courts, tables and bowls. I think such a place would be very popular with the boys. The market is in a fine position for an arcade of this kind. No one near to be disturbed by noisy merriment. Being near the dock, it would attract the boys before they got into the town, where less desirable resorts abound. I think this arcade would keep the boys out of scrapes and save the town from a good deal of rowdiness. Such a place, if properly managed, should repay all expenses of equipment and provide a surplus for other entertainments.

I would further suggest that an appropriate name for this place of entertainment be "The Naval Arcade."

ANNIE A. KEARNS



FOR SALE

Ten acres of pineapple land at Waihiwa. Good location. More land adjoining if desired.
Building site: College Hills, 40,000 sq. ft. Owner will accept mortgage for full purchase price of land provided buyer builds house.

FOR RENT FURNISHED

Hotel Street \$30.00
Prospect Street \$50.00
Kaimuki \$37.00

FOR RENT UNFURNISHED

Kinaiu Street \$35.00
Lunalilo Street \$25.00
Young Street \$25.00
King Street \$26.00
Kinaiu Street \$30.00
Kewalo Street \$22.50
King Street \$15.00
Aloha Lane \$18.00
Matlock Avenue \$25.00
Emma Street \$24.00
Beretania Street \$40.00

Waterhouse Trust

Corner Fort and Merchant Sts. Honolulu.

Trent Trust Co. Ltd
916 Fort St, Honolulu

Buy A Small Farm

One of the choicest building sites in Manoa. Over 6 acres of land. Five minutes' walk from end of car line. Beautiful view of mountains and sea. Land cleared and suitable for cultivation of pineapples or for small farming. The entire piece will be sold at a very low figure.

Trent Trust Co. Ltd
916 Fort St, Honolulu

Books, Bookish People and Things

DISTRUST OF PREVAILING THEOLOGY.

Various things combined to increase my distrust for the prevailing orthodoxy. I had a pension for historical reading,—indeed, at that time had probably read more and thought more upon my reading than had most of my age in college,—and the more evident it became to me that, while the simple religion of the Blessed Founder of Christianity has gone on through the ages producing the noblest growths of faith, hope, and charity, many of the beliefs insisted upon within the Church as necessary to salvation were survivals of primitive superstition, or evolved in obedience to pagan environment or Jewish habits of thought or Greek metaphysics or medieval interpolations in our sacred books; that most of the frightful systems and events in modern history have arisen from theological dogmatism; that the long reign of hideous cruelty in the administration of the penal law, with its torture chambers, its burnings of heretics and witches, its crucifixions of every sort, its repressions of a much of sane human instinct and noble human thought, arose from this source, directly or indirectly; and that even such ghastly scenes as those of the French Revolution were provoked by a natural reaction in the minds of a people whom the Church, by its theory of divine retribution, had educated for ages to be cruel.

But what impressed me most directly as regards the whole orthodox part of the Church was its virtual support of slavery in the crisis then rapidly approaching. Excellent divines, like Bishop Hopkins of Vermont, the Rev. Dr. Parker of New Jersey, and others holding high positions in various sections throughout the country, having based elaborate defenses of slavery upon Scripture, the Church as a whole had acquiesced in this view. I had become bitterly opposed, first, to the encroachments of the slave power in the new Territories of the United States, and, finally, to slavery itself; and this alliance between it and orthodoxy deepened my distrust of what was known about me as religion. As the struggle between slavery and freedom deepened, this feeling of mine increased. During my first year at college the fugitive-slave law was passed, and this seemed to me the acme of abominations. There were, it is true, a few religious men who took high ground against slavery; but these were generally New England Unitarians or members of other bodies rejected by the orthodox, and this fact increased by distrust of the dominant religion. Some years before this, while yet a boy preparing for college, I had met for the first time a clergyman of this sort,—the Rev. Samuel Joseph May, pastor of the Unitarian church in Syracuse; and he had attracted me from the first moment that I saw him.

There was about him something very genial and kindly, which won a way to all hearts. Though I knew him during many years, he never made the slightest effort to proselyte me. To every good work in the community, and especially to all who were down-trodden or oppressed, he was steadfastly devoted; the Onondaga Indians of Central New York found in him a staunch ally against the encroachments of their scheming white neighbors; fugitive slaves knew him as their best friend, ready to risk his own safety in their behalf.

Although he was the son of an honored Massachusetts family, a graduate of Harvard, a disciple of Channing, a man of sincere character and eloquent manners, he was evidently dreading by the great majority of the orthodox Christians about him. I remember speaking to him once of a clergyman who had recently arrived in Syracuse, and who was an excellent scholar. Said Mr. May to me, "I should like to know him, if that were possible." I asked, "Why not call upon him?" He answered, "I would gladly do so, but do you suppose he would return my call?" "Of course he would," I replied; "he is a gentleman." "Yes," said Mr. May, "no doubt he is, and so are the other clergymen; yet I have called on them as they have come, and only two or three of them all have ever entered my house since." Orthodox fanatics came to demonstrate and pray with him, but these he generally overcame with his sweet and kindly manner. To slavery he was an uncompromising foe, being closely associated with Garrison, Phillips, and the leaders of the anti-slavery movement; and so I came to see that there was a side to Christianity not necessarily friendly to slavery, but I also saw that it was a side not welcomed by the churches in general, and especially distrusted in my own family. I remember taking to him once an old friend of mine, a man of most severe orthodoxy; and, after we had left Mr. May's house, I asked my friend what he thought of the kindly heretic. He answered, "Those of us who shall be so fortunate as to reach heaven are to be greatly surprised at some of the people we are to meet there."

I became convinced that what the world needed was more religion rather than less, more devotion to humanity and less preaching of dogmas. Whenever I spoke of religion, it was not to say a word against any existing form; but I especially referred, as my ideals of religious conduct, to the declaration of Micah, beginning with the words, "What doth the Lord require of thee?" to the Sermon on the Mount; to the definition of "pure religion and undefiled" given by Saint James; and to some of the wonderful utterances of Saint Paul.

One day a student at Ann Arbor said to me that an old man, living not far from the university grounds, was very ill and wished to see me. I called on him, and found him stretched out on his bed, and greatly emaciated with consumption. He was a Hicksite Quaker. As I entered the room, he said: "Friend, I hear good tidings of thee: thou art telling the truth. Let me hear thy testimony before I die. I believe in God and in a future life, but in little else which the

churches teach. I am dying. Within two or three days, at furthest I shall be in my coffin. Yet I look on the future with no anxiety: I am in the hands of my loving Father, and have no more fear of passing through the gate of death into the future life than of passing through yonder door into the next room." After kindly talk I left him, and the next day learned that he had quietly passed away.

I trust that there are circumstances which may oblige a self-respecting man to withdraw from religious organizations and assemblies. There may be reactionary zeal of rabbis, priests, deacons, destructive to all peaceful advance of thought; there may be a degeneration of worship into fetishism; there may be control by young Levites whose minds are only adequate to decide the colors of altarcloths and the cut of man-millinery; there may be control by men of middle age who preach a gospel of "hatred, malice, and all uncharitable-ness;" there may be tyranny by old men who will allow no statements of belief save those which they learned as children.

From such evils there are, in America at least, many places of refuge; and, in case these fall, there are the treasures of religious thought accumulated from the days of Marcus Aurelius, Saint Augustine, and Thomas a Kempis to such among us as Brooks, Gibbons, Mungier, Henry Simmons, Rabbi Weissstock, and Jacobs, and very many others. It may be allowed to a hard-worked man who has passed beyond the allotted three-score years and ten to say that he has found in general religious biography, Jewish, Catholic, and Protestant, and in the writings of men nobly inspired in all these fields, a help without which his life would have been poor indeed.

The B. H. has had several requests for a collection of opinions of prominent men like Mr. White, regarding Religion.

It was Phillips Brooks himself who said that he knew of no man of large intellect and culture who had remained orthodox. So it will be rather difficult to find any man of any importance who voices the creeds of the churches, yet nearly all of these great men have expressed their reverence for the Truths of religion.

GARTER ACCOUNTS FOR HIS WARD'S PROPERTY

George R. Carter today filed his twelfth annual account as guardian of Henry A. P. Carter and of Grace S. Carter, minors.

In the case of Henry A. P. Carter the guardian charges himself with the amounts received on account of principal, totaling \$77,787.50. The balance of principal invested amounting to the same. On account of income he charges himself with \$6588.50, and asks to be allowed for sums expended \$3,224.99, leaving a balance on hand of \$24,335.51.

In the case of the property of Grace S. Carter, the guardian states the amounts received on account of principal to be \$79,225.60; the balance of principal invested, \$78,787.50; charges himself with amounts received on account of income, \$5521, and asks to be allowed for sums expended \$2165. The balance of income, \$2456, is transferred to principal.

HONOLULU WEATHER

February 24.
Temperatures—6 a. m., 67; 8 a. m., 75; 10 a. m., 76; noon, 76; morning minimum, 66.
Barometer, 8 a. m., 30.09; absolute humidity, 8 a. m., 5.993 grains per cubic foot; relative humidity, 8 a. m., 58 per cent; dew point, 8 a. m., 58.
Wind—6 a. m., velocity 5, direction N. E.; 8 a. m., velocity 2, direction N. E.; 10 a. m., velocity 14, direction S. E.; noon, velocity 10, direction S.
Rainfall during 24 hours ended 8 a. m., .00 inch.
Total wind movement during 24 hours ended at noon, 153 miles.
WM. B. STOCKMAN,
Section Director, U. S. Weather Bureau

REPRESENTATIVE SILVA

(Continued from Page 1) nothing but ails and hardly that. That is one side—apparently the side the Territorial officials have taken.

The other side of it is that the land is good for coconuts, or, indeed, there is an opportunity for planting an algeroba forest and developing a wood supply and the basis of a bee farm.

There are some men on Kauai who claim that their protests sent to Honolulu have been treated in a most arbitrary manner. They say the response has been that the matter is settled and there is nothing more to say about it.

It is in the interests of these protestants that Representative J. I. Silva left his business and came to Honolulu on the Nihau to see the Governor in the interests of his constituents.

Representative Silva, accompanied by Attorney White of Lihue called on the Governor this noon and formally presented the "protest of the people."

The snag which the proposed sale of the Mana "hand-lots" has run against appears to be a many-branched obstruction. According to

JOSH BILLINGS says:
"Life is short. If it ain't jolly it ain't worth livin'!"
You miss your share of fun if you wait for a
VICTOR
Why not buy it of us now on our easy-payment plan and have the jollity while you are paying for it!

Bergstrom Music Co., Ltd.

Use Pure Milk

Don't take chances with milk that may contain typhoid germs. Our condensed milk is used very generally on the Pacific Coast instead of ordinary cow's milk. It is so rich in natural flavor and butter-fat that it is preferred by many in tea, coffee, cocoa, and chocolate, while it makes the best body for gravies, sauces, ice-cream, fricassees, etc.

If you try it once, you will see that it is all we claim.

Alpine Milk

(UNSWEETENED)

is thoroughly sterilized and evaporated by a hygienic process to the consistency of a rich cream, and is readily digested and assimilated.

H. Hackfeld & Co., Ltd.,

(DISTRIBUTORS)

Representative Silva and Attorney John D. White, there is general dissatisfaction over the terms of the sale as advertised. The people of Kauai regard it as a continuation of the old policy of concentrating the land in the hands of the few to the exclusion of the many. "There are over 640,000 acres of land on Kauai," said Mr. Silva, "and only fifty land-owners."

"We told the Governor this morning," said Mr. White, "that we had no use to grind. What we wanted was the opportunity to protest the terms of this sale without having to state that we are prospective bidders. We represent a large number of the citizens of Kauai who object to the terms of this sale as unfair to them."

"If the Mana lands are sold as advertised it means virtually giving them away to the Knudsen family, for no body else has any possible chance to buy them under the provisions of the sale. The Government requires that out of each 500 acres of the land, 350 acres at least must be planted to algal, 1000 plants to the acre. This is an utter impossibility. The average man cannot raise the money to comply with this requirement, and, if he could, he cannot get the algal plants, for the Knudsen family has an option on all that can be bought in the Territory. This means that nobody but the Knudsen family can bid for the land."

"All we are asking for is fair play. We want this algal provision knocked out and the land offered in such parcels as the average man can afford to buy. They say that the land is fit for nothing but algal, but this is not true. Coconuts and other things will grow there. But granting, merely for the sake of argument, that algal is the only thing that will grow on the 'hand-lots,' that is no reason why the Government should offer the land under such terms as to restrict it to the Knudsen family and shut out other people. Everybody ought to be given an equal show. That is our contention and that is what we told the Governor. There is nothing fair in requiring that the purchasers plant algal when only the Knudsen family can get algal."

Eleven craphooters appeared before Judge Andrade this morning, three of whom were arrested on board the Hall and the rest on board the Kinaiu by Detective Taylor. Most of them were sailors, but some of them were professionals who came on board to relieve the sailors of their earnings. The defendants were fined from \$5 to \$25 each, with the exception of the banker, who forfeited his \$15 bail.

Cameron, the mate of the Kellie, which was wrecked at sea, appeared on a charge of drunkenness, to which he entered a plea of guilty. Prosecutor Brown stated that he had been in an open boat for sixteen days without water, and seemed to be entitled to one jag to make up for it, whereupon the Court ordered the case stricken from the calendar.

Manuel Sousa also had to answer for a jag. Judge Andrade stated that he had threatened to shoot his mother and to burn her house, and had his entire family terrified. The performance was therefore good for fifteen days in jail.

Kaliko, a Hawaiian lady, was charged with assault and battery on her husband. This gentleman appeared with a bandage on his face, indicating that his helpmeet had done a thorough job. The lady's counsel, C. F. Chillingworth, explained that Kiliona, the husband, had wanted to go to an opium joint to waste the family funds in smoke, and it was his efforts to protect the exchequer that the lady had injured him. The

(Continued on Page 5)

WHALER TO LEAVE

The old whaler John and Winthrop, which has been lying off the harbor for the last ten days, is billed to sail away this afternoon on a five-year whaling expedition. The Winthrop put into this port for repairs. She is loaded to the water-line with provisions for the long cruise.

Outfit Yourself For 1908

with office or pocket
DIARIES—for daily jottings;
CALENDAR PADS—for memoranda, and the
HAWAIIAN ANNUAL—for daily reference. Each or all to be had at

Thrum's Book Store

THE
Moana Baths and Buffet
ARE STILL OPEN

Accommodations unequalled anywhere on the beach.

A fine gold-mounted Back Comb makes a handsome gift.

We have just received a large assortment of Stylish COMBS of REAL SHELL and MOUNTED IN SOLID GOLD. The prices are very reasonable.

H. F. Wichman & Co.
LTD.
LEADING JEWELERS.

Moonlight Is the Time

When the moon comes up take your motor car and a companion and go down to Haleiwa. It is the finest drive in the district, for the roads are in splendid condition.

ST. CLAIR RIDGOOD
Manager

ALL THAT'S NEWEST AND BEST IN THE DRY GOODS LINE

B. F. Ehlers & Co.,
Fort St. P. O. Box 716.

"An honest tale speeds best being plainly told."



The Hanan Shoe is constantly making conversions from the old belief that a shoe must be made to order to fit properly

McInerny Shoe Store

The Doctor Will

invariably order the nervous person to stop drinking coffee and tea. He knows that these beverages not only have not the least nourishing value, but contain poisonous alkaloids.

In their stead, he will recommend a glass of beer with meals. It has been appropriately called "Liquid Bread," as it contains one-fifth of a pound of dry substances in every quart: albumen, Salts and Phosphates, and Extract of Malt, which last is a powerful aid to the digestion and a tonic for the sick, convalescent, and feeble. With meals, a glass of

Primo Beer

40c Lb. BUTTER 40c Lb.

Celebrated Butternut Creamery Block Butter

Nothing Better to be had

LEWIS & CO., Ltd., Family Grocers, Sole Agents. 189 King St. Phone 240.

MEN'S SWEATERS

Now 45; before 75c

L. AHOY, NUUANU BELOW HOTEL STREET.

Meats Poultry Game

We have the best there is. It is better-kept than any other, is more tender, and has more good qualities. Our business is providing families with the best.

Metropolitan Meat Company, Limited. Telephone 45

LIVE LOBSTERS

Cooked in any style and well served

Lunch, 25c

Scotty's

Royal Annex, Merchant St.

LANDO'S Hotel St. Store

OPP. YOUNG HOTEL.

New Lines of Ties, Belts Smoking Jackets, Bath Robes--Just In

NEW - TO-DAY HONOLULU STOCK EXCHANGE

NOTICE TO REPUBLICANS.

According to the terms of the Official Call for The Republican National Convention to be held in Chicago on June 16, 1908, and pursuant to the rules of the Republican Party of the Territory of Hawaii, the Republican Precinct Clubs throughout the Territory are hereby notified to hold primaries for the election of delegates to a convention to be held in Honolulu on April 13, 1908, for the election of delegates to the National Convention. Such primaries shall be held on Saturday, the 28th day of March, 1908, and shall remain open between the hours of 3 and 6 o'clock p. m. of said day, and the precinct roll books shall be open for the enrollment of members until the close of the poll as aforesaid. The judges of election of each precinct shall furnish the successful candidates with certificates of election and shall make report of the result of the poll to the Secretary of the Republican Central Committee, Honolulu.

The number of delegates to which the precincts will be entitled are as follows:

COUNTY OF HAWAII. First Representative District. 1st Precinct..1 7th Precinct..1 2nd Precinct..1 8th Precinct..1 3rd Precinct..1 9th Precinct..1 4th Precinct..3 10th Precinct..1 5th Precinct..5 11th Precinct..2 6th Precinct..1 12th Precinct..2 TOTAL--20.

Second Representative District. 1st Precinct..1 7th Precinct..1 2nd Precinct..2 8th Precinct..2 3rd Precinct..2 9th Precinct..2 4th Precinct..1 10th Precinct..2 5th Precinct..1 11th Precinct..1 6th Precinct..2 TOTAL--16.

COUNTY OF MAUI. 1st Precinct..1 11th Precinct..1 2nd Precinct..1 12th Precinct..1 3rd Precinct..3 13th Precinct..4 4th Precinct..1 14th Precinct..1 5th Precinct..3 15th Precinct..1 6th Precinct..4 16th Precinct..1 7th Precinct..1 17th Precinct..1 8th Precinct..1 18th Precinct..1 9th Precinct..1 19th Precinct..1 10th Precinct..1 20th Precinct..3 TOTAL--32.

COUNTY OF OAHU. Fourth Representative District. 1st Precinct..4 6th Precinct..6 2nd Precinct..3 7th Precinct..3 3rd Precinct..3 8th Precinct..4 4th Precinct..3 9th Precinct..4 5th Precinct..4 10th Precinct..1 TOTAL--36.

Fifth Representative District. 1st Precinct..2 8th Precinct..2 2nd Precinct..2 9th Precinct..4 3rd Precinct..3 10th Precinct..1 4th Precinct..1 11th Precinct..3 5th Precinct..1 12th Precinct..4 6th Precinct..4 13th Precinct..2 7th Precinct..2 TOTAL--32.

COUNTY OF KAUI. 1st Precinct..1 6th Precinct..1 2nd Precinct..1 7th Precinct..3 3rd Precinct..1 8th Precinct..1 4th Precinct..1 9th Precinct..1 5th Precinct..1 10th Precinct..1 TOTAL--12.

Honolulu, February 24th, 1908. A. G. M. ROBERTSON, Chairman, Republican Territorial Central Committee. WILLIAM SAVIDGE, Secretary. 3933-11

NOTICE TO CREDITORS.

Letters Testamentary under the last will and testament of Frederick W. Wundenberg, deceased, having been granted to the undersigned by Hon. Alexander Lindsay, Jr., Second Judge of the First Judicial Circuit, Territory of Hawaii, on February 24, 1908, notice is hereby given to all creditors of said Frederick W. Wundenberg, deceased, to present their claims, duly authenticated and with proper vouchers, if any exist, even if the claim is secured by mortgage upon real estate, to the undersigned or to E. I. Spalding at the office of Claus Spreckels & Co., bankers, Fort street, Honolulu, within six months from the first publication of this notice, or they will be forever barred. Date--Honolulu, February 24, 1908. ELSIE M. WUNDENBERG, Executrix under the Will of Frederick W. Wundenberg, deceased. Kinney & Marx, attorneys for executrix. Feb. 24; Mar. 2, 9, 16, 23.

REPUBLICANS ACTIVE (Special to The Bulletin) Wailuku, Maui, Feb. 21. -- The Spreckelsville Republican Club will celebrate Washington's birthday Saturday evening with music and oratory at their new hall. W. F. Crockett of Wailuku will deliver the address of the evening and no doubt this knight of the forum will hold his hearers spellbound with his narratives concerning the Father of His Country. Bulletin Business Office Phone 256. Bulletin Editorial Room Phone 185.

HONOLULU, Feb. 24, 1908

Table with columns: NAME OF STOCK, Bid, Ask, and other market data. Includes entries for SUGAR, HAWAIIAN SUGAR CO., HONOLULU SUGAR CO., etc.

Salts--Between Boards: 20 Pains, \$127.50; 30 Oahu Sug. Co., \$23.75; 40 Oahu Sug. Co., \$23.75; 5 Oahu Sug. Co., \$23.75; 15 Wailuku, \$66.

Latest sugar quotation 3.67 cents or 37.30 per ton.

London Beets, 9s 9 3-4d Sugar, 3.70

Henry Waterhouse Trust Co., Stock and Bond Department. Members Honolulu Stock and Bond Exchange.

WILLIAM WILLIAMSON, Manager, FORT AND MERCHANT STS. TEL. PRIVATE EXCHANGE 4.

GET YOUR SEATS WITHOUT DELAY

"Who steals my purse steals trash; 'tis something, nothing, 'twas mine, 'tis his and has been slave to thousands. But he who fishes from me my good name robs me of that which will not enrich him and makes me poor indeed." The guita percha lady of the Aquarium did not take the purse of the gentleman who met her in a fog but she secured his kerchief and came very close to taking from him his good name. This is one of the points in the play of the Arabian Nights which will be enjoyed by the audience at the Opera House, next Thursday night when it will be produced by members of the Dramatic Circle of the Kilauea Art League for the benefit of that organization. The handkerchief incident leads up to the comedy features of the very clever skit and there are many other situations just as funny as the one brought about by the loving husband, out for a lark, playing character to an unknown girl. The characters are well presented and there is no hitch anywhere in the production, if one is to judge by the way they are acted at rehearsals and past events in the line of production under the auspices of the League are assurance enough for the public as to the result of this one. The curtain raiser, one of the "Dolly Dialogues", and this is one of the best of Anthony Hope's, is talked over by Dr. and Mrs. Humphris most cleverly. Persons should secure their seats without delay. Wall, Nichols Co., Ltd., have the box plan.

RECEPTION FOR RICES

Lihue, Kauai, Feb. 22.--Mr. and Mrs. W. H. Rice, Sr., gave a very pleasant reception to a number of the Lihue residents last Saturday in honor of Mr. and Mrs. Harold Rice, who were about to finish up their honeymoon trip. A simultaneously occurring musicale made the number of guests smaller than else could have been expected, but still the beautiful homestead was filled with a pleasant company. The bright moonlight, a profusion of flowers and greenery and a number of judiciously arranged lanterns gave added charm to park and house. After the formal reception had taken place, the guests were treated to some excellent music by a number of the music-lovers of the district who were charmed to discover that their circle had gained a very able link in Miss Emily Rice, who lately returned from the Coast. The quintet club discoursed some of its best pieces during the interval when the refreshments were served, but later swung into a lively two-step, an invitation that could not be withstood by the young people. Mr. and Mrs. Harold Rice left again on Tuesday for their new home on Maui.

MAUI FIREWORKS

(Special to The Bulletin) Wailuku, Maui, Feb. 21. -- The fireworks exhibition given by the officers of the Maui Dry Goods and Grocery Co., Ltd., at Kahului Bay on Monday evening was attended by hundreds of people both from Wailuku and Punene. Skyrockets of various designs illumined the sky for nearly an hour while the spectators stood on the sandy beach watching the rockets as they dashed to and fro in the upper atmosphere. After the fireworks the guests returned to the store building, where a magic lantern exhibition attracted their attention for over an hour.

THE BUSINESS MAN'S HANDY INDEX, published in the Saturday Bulletin and the Weekly Edition, gives a concise and complete resume of all legal notices, calls for tenders, judgments, building permits and real estate transactions. Evening Bulletin, 75c per month, Weekly Bulletin,



COLLEGE MEN and HIGH SCHOOL BOYS, as well as business men of all kinds and positions, find Hart Schaffner & Marx clothes just right. We show styles to suit everybody. The new Spring styles just in.

SILVA'S TOGGERY, Elks' Bldg. King St., Tel. 651

LOCAL AND GENERAL

A poor situation or none at all is largely the result of neglect of a BULLETIN Want Ad. One cent a word one time does it.

Rent Franklin cars. Skyds. Stbts. Editor Hugh M. Coke of the Maui News is in town.

Ring up Scotty's when you want a good auto ride. Phone 107. New Irish point and valencienness faces now displayed at Blom's.

Putnam Health Pills make rich blood; 50c a package. Try them. Bulletin Business Office Phone 256. Bulletin Editorial Room Phone 185. Just arrived, Hallwood Cash Registers. Hawaiian Office Specialty Co., Ltd.

The police arrested ten gamblers yesterday morning, all young Hawaii on boys.

Take your carriage or automobile to Hawaiian Carriage Manfy. Co. for up-to-date repairs.

Attorney White of Lihue is in town and called on the Governor today with Representative J. I. Silva.

The regular monthly meeting of the Woman's Guild, of St. Clement's Church, will be held on Tuesday, February 25th, at 3 o'clock at the Parish House.

On all hands, housewives are complimenting the local agency of the celebrated Butternut Creamery butter. Lewis & Co., Ltd., Family Grocers, 169 King street; telephone 240. A fresh shipment of this delicious butter just to hand. Only 40 cents per pound. Ring up for a block.

The Island brought the following freight from Maui and Molokai ports: 1 bundle skins, 2 head mules, 6 bags corn, 2 boxes eggs, 2 boxes chickens, 5 bags coconuts, 10 pieces veal, 10 bags taro, 11 empty boxes, 14 head calves, 37 head cattle, 191 pigs, 125 bags sugar, 2 lots brood, 24 pack eggs sundries.

RECEPTION FOR RICES

Lihue, Kauai, Feb. 22.--Mr. and Mrs. W. H. Rice, Sr., gave a very pleasant reception to a number of the Lihue residents last Saturday in honor of Mr. and Mrs. Harold Rice, who were about to finish up their honeymoon trip. A simultaneously occurring musicale made the number of guests smaller than else could have been expected, but still the beautiful homestead was filled with a pleasant company. The bright moonlight, a profusion of flowers and greenery and a number of judiciously arranged lanterns gave added charm to park and house. After the formal reception had taken place, the guests were treated to some excellent music by a number of the music-lovers of the district who were charmed to discover that their circle had gained a very able link in Miss Emily Rice, who lately returned from the Coast. The quintet club discoursed some of its best pieces during the interval when the refreshments were served, but later swung into a lively two-step, an invitation that could not be withstood by the young people. Mr. and Mrs. Harold Rice left again on Tuesday for their new home on Maui.

CAMERON ENTITLED

(Continued from Page 4) case was finally continued. Sam Kaalos, a Hawaiian stenographer, and W. E. Ellis, a soldier, charged with affray, were given the benefit of a nolle pro. The prosecution explained that Ellis had been the aggressor.

RAINIER BEER. If YOU are low spirited take a brewer. TRY a glass of RAINIER BEER. You can get it at the bar or by the case at Rainier Bottling W'ks Tel.1331

Monuments, Safes, Iron Fence. Hawaiian Iron Fence and Monument Works. NEXT TO YOUNG BLDG., 176-180 KING STREET. PHONE 267.

Maui Wine. MADE IN KAUPAKULUA, MAUI. A HOME PRODUCT. A FINE TABLE WINE OF EXCELLENT BOUQUET AND FLAVOR. FOR SALE by all wholesale and retail wine and liquor dealers and by all saloons. TRY IT.

Ladies' Waist Pattern One of McCalls Specials. Also materials to make it up at E. W. JORDAN & CO. Ltd., Fort St

Oceanic Steamship Company TIME TABLE

The steamers of this line will arrive and leave this port as hereunder:

FROM SAN FRANCISCO:	FOR SAN FRANCISCO:
1908.	1908.
S. S. ALAMEDA MAR. 6	S. S. ALAMEDA MAR. 11
S. S. ALAMEDA MAR. 27	S. S. ALAMEDA APR. 1
S. S. ALAMEDA APR. 17	

In connection with the sailing of the above steamers, the agents are prepared to issue the intending passengers, coupon through tickets, by any railroad from San Francisco to all points in the United States, and from New York by any steamship line to all European ports. FOR FURTHER PARTICULARS APPLY TO

Wm. G. Irwin & Co., Ltd

OCEANIC S. S. CO. GENERAL AGENTS.

Pacific Mail Steamship Co. Occidental and Oriental Steamship Co., and Toyo Kisen Kaisha

Steamers of the above companies will call at Honolulu and leave this port on or about the dates below mentioned:

FOR JAPAN AND CHINA:	FOR SAN FRANCISCO:
NOROKA MAR. 2	CHINA FEB. 29
AMERICA MARU MAR. 10	MANCHURIA MAR. 7
SUREIDA MAR. 16	NIPPON MARU MAR. 13
CHINA MAR. 23	ASIA MAR. 21
MANCHURIA MAR. 29	MONGOLIA MAR. 28

H. Hackfeld & Co., Ltd., Agents

AMERICAN-HAWAIIAN STEAMSHIP COMPANY.

FROM NEW YORK TO HONOLULU.

Weekly Sailings via Tehuantepec.
Freight received at all times at the Company's Wharf, 41st Street, South Brooklyn.
FROM HONOLULU TO SAN FRANCISCO DIRECT.
S.S. NEVADA, TO SAIL FEB. 24
FROM SAN FRANCISCO TO HONOLULU DIRECT.
S.S. TEXAN, TO SAIL FEB. 21
Freight received at Company's wharf, Greenwich Street.

Canadian-Australian Royal Mail Steamship Company.

Steamers of the above line, running in connection with the CANADIAN PACIFIC RAILWAY CO. between Vancouver, B. C., and Sydney, N. S. W., and calling at Victoria, B. C., Honolulu and Suva, Fiji, and Brisbane, are DUE AT HONOLULU on or about the dates below stated, viz:

FOR FIJI AND AUSTRALIA:	FOR VANCOUVER:
AORANGI MCH. 7	MOANA MCH. 4
MOANA APR. 4	MIOWERA APR. 1

Through Tickets issued from Honolulu to Canada, United States and Europe. For Freight and Passage and all general information, apply to
Thee. H. Davies & Co., Ltd. General Agents.

Matson Navigation Company

The S. S. "HILONIAN" of this line, carrying passengers and freight, will run in a direct service between this port and San Francisco, sailing and arriving on or about the following dates:

LEAVE S. FRAN.	ARRIVE HONOLULU	LEAVE HONOLULU
MAR. 11th	MAR. 18th	MAR. 24th
APR. 8th	APR. 15th	APR. 21st
MAY 6th	MAY 13th	MAY 19th
JUNE 3rd	JUNE 10th	JUNE 16th

Passenger Rates to S. F.: First Cabin, \$60; Round Trip First Class \$110.00
For further particulars apply to
CASTLE & COOKE, LTD., Agents.

Union-Pacific Transfer Co., Ltd.

Baggage Shipping
Storage Wood
Packing Coal

PHONE
58

Hustace-Peck Co., Ltd.

Phone 295. DRAYMEN 63 Queen Street. P. O. Box 212
Estimates Given on all kinds of teaming.

Dealers in
FIREWOOD, STOVE, STEAM AND BLACKSMITH COAL.
CRUSHED ROCK, BLACK AND WHITE SAND, GARDEN SOIL.
HAY, GRAIN, CEMENT, ETC.

Weekly Bulletin \$1 Per Year

Fast Schooner CONCORD

Sailing for
KAPUNA, HONOIPU, KAILUA and HOOKENA
From Sorenson's Wharf.
Apply on Board or to
HAWAIIAN BALLASTING CO., Agt.
Telephone 396, Maunakea St., below King. P. O. Box 820.

SUN CHOY SING,

BUILDING CONTRACTOR, REPAIRING, PAPER HANGING, AND PAINTING.
Brick Laying. Cement Work.
No. 1135 FORT ST., opp. Club Stables.
TEL. 431.

BULLETIN ADS PAY KIN SUT, Prop.

Bishop & Co. BANKERS.

Commercial and Travelers' Letters of Credit issued on the Bank of California and The London Joint Stock Bank, Ltd., London.

Correspondents for the American Express Company and Thos. Cook & Son.

Interest allowed on term and Savings Bank Deposits.

Claus Spreckels & Co. BANKERS

HONOLULU, T. H.

San Francisco Agents - The Nevada National Bank of San Francisco. Draw Exchange on the Nevada National Bank of San Francisco. London - The Union of London and Smith's Bank, Ltd. New York - American Exchange National Bank. Chicago - Corn Exchange National Bank. Paris - Credit Lyonnais. Hongkong and Yokohama - Hongkong-Shanghai Banking Corporation. New Zealand and Australia - Bank of New Zealand and Bank of Australasia. Victoria and Vancouver - Bank of British North America. Deposits received. Loans made on approved security. Commercial and Travelers' Credits issued. Bills of Exchange bought and sold.

Collections Promptly Accounted For.

The First AMERICAN SAVINGS AND TRUST CO.

OF HAWAII, LTD.

SUBSCRIBED CAPITAL, \$200,000.00
PAID UP CAPITAL, \$100,000.00
President, Cecil Brown
Vice President, M. P. Robinson
Cashier, L. T. Peck

Office: Corner Fort and King Sts.
SAVINGS DEPOSITS received and interest allowed for yearly deposits at the rate of 4 1/2 per cent. per annum.
Rules and regulations furnished upon application.

The Yokohama Specie Bank, Limited

Established 1880

Capital (Paid up) Yen 24,000,000
Reserved Fund Yen 15,050,000
Special Reserved Fund Yen 2,000,000

HEAD OFFICE, YOKOHAMA.

Branches and Agencies:
Tokyo, Kobe, Osaka, Nagasaki, London, Lyons, New York, San Francisco, Bombay, Hongkong, Shanghai, Hankow, Chefoo, Tientsin, Peking, Newchang, Dainy, Port Arthur, Antung-Haien, Liaoyang, Mukden, Tientsin, Changchun.
The Bank buys and receives for collection bills of exchange, issues Drafts and Letters of Credit, and transact a general banking business.
Honolulu Branch, 87 S. King Street.

Oahu Railway Time Table.

OUTWARD.
For Waianae, Waiulus, Kahuku and Wai Stations - 9:15 a. m., 9:30 p. m.
For Pearl City, Ewa Mill and Wai Stations - 7:30 a. m., 9:15 a. m., 11:05 a. m., 2:15 p. m., 3:20 p. m., 5:15 p. m., 7:30 p. m., 11:00 p. m.
For Waihana - 9:15 a. m. and 5:15 p. m.
INWARD.
Arrive Honolulu from Kahuku, Waiulus and Waihana - 7:36 a. m., 5:31 p. m.
Arrive in Honolulu from Ewa Mill and Pearl City - 7:46 a. m., 8:36 a. m., 10:38 a. m., 1:40 p. m., 4:31 p. m., 5:31 p. m., 7:30 p. m.
Arrive Honolulu from Waihana - 8:36 a. m. and 5:31 p. m.

*Daily.
†Ex. Sunday.
‡Sunday Only.
The Halesi Limited, a two-hour train (only first-class tickets honored), leaves Honolulu every Sunday at 8:22 a. m.; returning, arrives in Honolulu at 10:10 p. m. The Limited stops only at Pearl City and Waihana.
G. P. DENISON, Supt.
G. E. & T. A.

Alexander & Baldwin LIMITED.

J. P. COOKE, Manager
OFFICERS AND DIRECTORS:
H. P. Baldwin, President
J. B. Castle, Vice President
W. M. Alexander, Second Vice Pres.
L. T. Peck, Third Vice Pres.
J. Waterhouse, Treasurer
E. E. Paxton, Secretary
W. O. Smith, Director
G. R. Carter, Director

SUGAR FACTORS, COMMISSION MERCHANTS and INSURANCE AGENTS

Agents for
Hawaiian Commercial & Sugar Co. Haiku Sugar Company. Paia Plantation. Maui Agricultural Company. Kihai Plantation Company. Hawaiian Sugar Company. Kahuku Plantation Company. Kahului Railroad Company. Halekaha Ranch Company. Honolulu Ranch.

Castle & Cooke, Ltd

Honolulu, T. H.
SHIPPING AND COMMISSION MERCHANTS, SUGAR FACTORS and GENERAL INSURANCE AGENTS representing

Ewa Plantation Co. Waiulus Agricultural Co., Ltd. Kohala Sugar Co. Waikea Sugar Mill Co. Apokaa Sugar Co., Ltd.
Fulton Iron Works of St. Louis
Blake Steam Pumps
Weston's Centrifugals
Babcock & Wilcox Boilers
Green's Fuel Economizers
Marsh Steam Pumps
Matson Navigation Co. Planters' Line Shipping Co.

Wm. G. Irwin & Co., Ltd

WM. G. IRWIN, President and Mgr.
JNO. D. SPRECKELS, 1st Vice Pres.
W. M. GIFFARD, 2nd Vice Pres.
H. M. WHITNEY, Treasurer
RICHARD IVERS, Secretary
W. F. WILSON, Auditor

SUGAR FACTORS and COMMISSION AGENTS

Agents for
Oceanic Steamship Co., San Francisco, Cal.
Western Sugar Refining Co., San Francisco, Cal.
Baldwin Locomotive Works, Philadelphia, Pa.
Newall Universal Mill Co. Manufacturers of National Cane Shredder, New York, N. Y.
Pacific Oil Transportation Co., San Francisco, Cal.

C. Brewer & Co., Ltd.

QUEEN STREET, HONOLULU, T. H.

AGENTS FOR:
Hawaiian Agricultural Co., Okaia Sugar Plant Co., Onomea Sugar Co., Honoumou Sugar Co., Wailuku Sugar Co., Papeete Sugar Co., The Planters Line of San Francisco Packets.
LIST OF OFFICERS:
C. M. Cooke, President; George Robertson, Vice President and Manager; E. F. Bishop, Treasurer and Secretary; F. W. Macfarlane, Auditor; P. G. Jones, C. M. Cooke and J. R. Galt, Directors.

FIRE INSURANCE

THE B. F. DILLINGHAM CO LIMITED.
General Agent for Hawaii: Atlas Assurance Company of London. New York Underwriters Agency. Providence Washington Insurance Co. 4th FLOOR, STANGENWALD BLDG.

LIFE INSURANCE

Is not a Luxury; it is a Necessity. But you must have the BEST and that is provided by the famous and most equitable Laws of Massachusetts, in the

New England Mutual Life Insurance Co.,

OF BOSTON, MASSACHUSETTS. If you would be fully informed about these laws, address

Castle & Cooke, GENERAL AGENTS, HONOLULU, T. H.

WM. G. IRWIN & CO., LTD.

AGENTS FOR THE
Royal Insur. Co. of Liverpool, Eng. Commercial Union Assurance Co., Ltd., of London, England. Scottish Union & National Ins. Co. of Edinburgh, Scotland. Wilhelma of Magdeburg General Insurance Company.

Corporation Notices

ELECTION OF OFFICERS.

OAHU SUGAR COMPANY, LTD.

At the Annual Meeting of the stockholders of the Oahu Sugar Co., Ltd., held at the office of H. Hackfeld & Co., Ltd., Honolulu, T. H., on Saturday, February 15th, 1908, the following Directors and Auditor were elected to serve for the ensuing year:
J. F. Hackfeld, M. P. Robinson, F. Lewis, W. Pfothenauer, F. J. Lowrey, J. A. McCandless, P. Muhlendorf, H. Focke, F. Klamp
Directors
A. Haneberg, Auditor
At a subsequent meeting of the Board of Directors, the following officers were appointed to serve for the ensuing year:
J. F. Hackfeld, President
M. P. Robinson, 1st Vice President
F. Lewis, 2nd Vice President
W. Pfothenauer, Treasurer
F. Klamp, Secretary
H. HUGO, Acting Secretary.
3928—Feb. 18, 21, 24.

ELECTION OF OFFICERS.

PIONEER MILL COMPANY, LTD.

At the Annual Meeting of the stockholders of the Pioneer Mill Co., Ltd., held at the office of H. Hackfeld & Co., Ltd., Honolulu, T. H., on Saturday, February 15th, 1908, the following Directors and Auditor were elected to serve for the ensuing year:
J. F. Hackfeld, Paul R. Isenberg, H. Focke, W. Pfothenauer, J. A. McCandless, F. W. Macfarlane, F. Klamp
Directors
A. Haneberg, Auditor
At a subsequent meeting of the Board of Directors, the following officers were appointed to serve for the ensuing year:
J. F. Hackfeld, President
Paul R. Isenberg, 1st Vice President
H. Focke, 2nd Vice President
W. Pfothenauer, Treasurer
F. Klamp, Secretary
H. HUGO, Acting Secretary.
3928—Feb. 18, 21, 24.

ELECTION OF OFFICERS.

LAHAINA AGRICULTURAL CO., LD.

At the Annual Meeting of the stockholders of the Lahaina Agricultural Co., Ltd., held at the office of H. Hackfeld & Co., Ltd., Honolulu, T. H., on Saturday, February 15th, 1908, the following Directors and Auditor were elected to serve for the ensuing year:
W. Pfothenauer, J. A. McCandless, F. W. Macfarlane, Geo. Rodiek, F. Klamp
Directors
A. Haneberg, Auditor
At a subsequent meeting of the Board of Directors, the following officers were appointed to serve for the ensuing year:
W. Pfothenauer, President
J. A. McCandless, Vice President
Geo. Rodiek, Treasurer
F. Klamp, Secretary
H. HUGO, Acting Secretary.
3928—Feb. 18, 21, 24.

NOTICE.

KOHALA RANCH CO., LTD.

At the annual meeting of the stockholders of the Kohala Ranch Co., Ltd., held at Kapana, Kohala, Hawaii, Saturday, February 8th, 1908, the following were elected officers and directors for the ensuing year:
J. F. Woods, President
M. R. Woods, 2nd Vice President
H. P. Beckley, Secy. and Treasurer
Thos. W. Gregg, Auditor
Directors
P. W. P. Bluet, M. Woods
S. P. Woods, I. H. Woods
M. R. Woods, H. P. Beckley, Secretary.
Kohala, Feb. 8th, 1908. 3921-2w

ANNUAL MEETING.

HONOKAA SUGAR CO.

The annual meeting of the stockholders of the Honokaa Sugar Company will be held at the office of F. A. Schaefer & Co., Limited, in Honolulu, on Saturday, February 29th, 1908, at 11 o'clock a. m.
J. W. WALDRON, Secretary, Honokaa Sugar Company. Honolulu, February 15th, 1908. 3924-td

ANNUAL MEETING.

PACIFIC SUGAR MILL.

The annual meeting of the stockholders of the Pacific Sugar Mill will be held at the office of F. A. Schaefer & Co., Limited, in Honolulu on Saturday, February 29th, 1908, at 2 o'clock p. m.
J. W. WALDRON, Secretary, Pacific Sugar Mill. Honolulu, February 15th, 1908. 3925-td

ANNUAL MEETING.

WAIANA SUGAR COMPANY.

The annual meeting of the stockholders of the Waianae Sugar Company will be held at the office of J. M. Dowsett, Honolulu, T. H., Thursday, February 27, 1908, at 11:30 o'clock a. m.
J. M. DOWSETT, Secretary.
Honolulu, T. H., February 17, 1908. 3927-td
The Weekly Edition of the Evening Bulletin gives a complete summary of the news of the day.

Corporation Notices

NOTICE TO STOCKHOLDERS.

OLAIA SUGAR COMPANY, LTD.

The Annual Meeting of the stockholders of the Olaia Sugar Company, Limited, has been called by the President for Tuesday March 3, 1908, and will be held at the rooms of the Chamber of Commerce, third floor Stangenwald Building, in Honolulu, at 2 o'clock p. m. on that date.
The stock transfer books will be closed from February 22nd to March 3rd, both days inclusive.
A. W. VAN VALKENBURG, Secretary, Olaia Sugar Company, Limited.
Dated Honolulu, February 20, 1908. 3930-10t

ANNUAL MEETING.

KIHEI PLANTATION CO.

The annual meeting of the stockholders of the Kihai Plantation Co. will be held at the office and principal place of business of the corporation, Stangenwald Building, Honolulu, on Friday, Feb. 28, 1908, at 10 a. m.
The stock books of the corporation will be closed for transfers on Friday, Feb. 21st, 1908, at 12 o'clock m.
By order of the Board of Directors.
E. E. PAXTON, Secretary.
Honolulu, Feb. 11, 1908. 3922-td

ANNUAL MEETING.

HAWAIIAN SUGAR CO.

The annual meeting of the stockholders of the Hawaiian Sugar Co. will be held at the office and principal place of business of the corporation, Stangenwald Building, Honolulu, on Friday, Feb. 28, 1908, at 2 o'clock p. m.
The stock books of the corporation will be closed for transfers on Friday, Feb. 21st, 1908, at 12 o'clock m.
By order of the Board of Directors.
E. E. PAXTON, Secretary.
Honolulu, Feb. 11, 1908. 3922-td

ANNUAL MEETING.

HAIKU SUGAR CO.

The annual meeting of the stockholders of the Haiku Sugar Co. will be held at the office and principal place of business of the corporation, Stangenwald Building, Honolulu, on Saturday, Feb. 29, 1908, at 9 a. m.
The stock books of the corporation will be closed for transfers on Friday, Feb. 21, 1908, at 12 o'clock m.
By order of the Board of Directors.
E. E. PAXTON, Secretary.
Honolulu, Feb. 11, 1908. 3922-td

ANNUAL MEETING.

PAIA PLANTATION.

The annual meeting of the stockholders of the Paia Plantation will be held at the office and principal place of business of the corporation, Stangenwald Building, Honolulu, on Saturday, Feb. 29, 1908, at 9:30 a. m.
The stock books of the corporation will be closed for transfers on Friday, Feb. 21, 1908, at 12 o'clock m.
By order of the Board of Directors.
E. E. PAXTON, Secretary.
Honolulu, Feb. 11, 1908. 3922-4t

ANNUAL MEETING.

KARUKU PLANTATION CO.

The annual meeting of the stockholders of the Kahuku Plantation Co. will be held at the office and principal place of business of the corporation, Stangenwald Building, Honolulu, on Thursday, Feb. 27, 1908, at 2 p. m.
The stock books of the corporation will be closed for transfers on Thursday, Feb. 20, 1908, at 12 o'clock m.
By order of the Board of Directors.
E. E. PAXTON, Secretary.
Honolulu, Feb. 11, 1908. 3922-td

ANNUAL MEETING.

CENTRAL MILL CO., LTD.

The annual meeting of the stockholders of the Central Mill Co., Ltd., will be held at the office and principal place of business of the corporation, Stangenwald Building, Honolulu, on Saturday, Feb. 29th, 1908, at 11 a. m.
The stock books of the corporation will be closed for transfers on Friday, Feb. 21st, at 12 o'clock m.
By order of the Board of Directors.
W. O. SMITH, Secretary.
Honolulu, Feb. 11, 1908. 3922-td

ANNUAL MEETING OF PARTNERS OF MAUI AGRICULTURAL CO.

The annual meeting of the Partners of the Maui Agricultural Company will be held at the office and principal place of business of the Partnership, Stangenwald Building, Honolulu, Saturday, the 29th day of February, 1908, at 10:30 a. m.
W. O. SMITH, Secretary.
Honolulu, Feb. 11, 1908. 3922-4d

MAUI CO., I, N.G.H., WAS INSPECTED

Major Dunning Finds the Wailuku Boys in Good Shape—New Hospital Corps.

(Special to The Bulletin)
Wailuku, Maui, Feb. 21.—Major R. J. Dunning of Fort Shafter was at Wailuku this week, having arrived here from Hilo last Saturday morning. On Sunday afternoon the Major inspected Company I, First Regiment, N. G. H., at the baseball grounds, Wells Park. Several hundred of Wailuku's citizens were there to view the inspection of the local company. The company marched down from the Armory at 2 p. m. in command of Captain W. E. Bal, to the baseball grounds. About forty-six turned out, including First Lieutenant S. Kellinot and Second Lieutenant Jno. Kanehelo. The men appeared in heavy marching order and presented quite a military appearance on their way to the review grounds. On arrival at Wells Park Captain Bal put his company through marching and manual of arms. Inspection of arms then followed. Major Dunning making a minute examination and inspection of arms and other munitions of war. Captain Bal then put his company in skirmishing order and then ordered the van guard to the attack. The drill lasted two hours. Both Lieutenants Kellinot and Kanehelo were given command of the company in succession and both of them acquitted themselves like veterans in handling a body of men. Major Dunning is well satisfied with the showing that Company I made.

Lieutenant R. H. Dinegar is organizing a hospital corps and several have already joined it. Captain Bal and Lieutenant Kellinot took Major Dunning to Ino last Monday and on Tuesday to Makawao and Hamakua-poko in Hon. H. P. Baldwin's new White steamer. On Wednesday afternoon Major Dunning returned to Honolulu via Lahaina.

WAILUKU ASPIRES TO NEW STONE CHURCH

(Special to The Bulletin)
Wailuku, Maui, Feb. 21. — His Lordship Right Rev. H. B. Restarck, Bishop of Honolulu, was present at the morning services of the Church of the Good Shepherd, Wailuku, Sunday morning and delivered a very able address. The little church was filled with communicants and church-goers. Rev. Canon Wm. Ault assisted in the services. The Bishop spoke upon the subject "Asking" in its various relations tending to the betterment of the individual. At the close of his sermon the Bishop told the congregation of the possibility of the erection in the near future of a stone church for Wailuku—one that will endure for ages and likewise will be an ornament to the town. The Bishop and Mrs. Restarck returned to Honolulu by the steamer Mauna Loa Thursday evening.

IMPERFECT SIGHT

The Benedict—"My wife is a woman who knows a good thing when she sees it."
The Bachelor—"Possibly; but judging from her choice of a husband she is evidently near-sighted."

Corporation Notices

ANNUAL MEETING.

AMERICAN-HAWAIIAN PAPER AND SUPPLY CO., LTD.

The annual meeting of Stockholders of the American Hawaiian Paper and Supply Co., Ltd., will be held at the Company's office, Boston Building, Honolulu, on Saturday, 29th February, 1908, at 10 a. m.
GEO. G. GUILD, Secretary.
Dated Honolulu, Feb. 20th, 1908. 3930-Feb 20, 22, 24.

ANNUAL MEETING.

KIPAHULU SUGAR CO.

The Annual Meeting of the Stockholders of the Kipahulu Sugar Co. will be held at the office of H. Hackfeld & Co., Ltd., Honolulu, T. H., Friday, February 28th, 1908, at 11 o'clock a. m.
H. HUGO, Acting Secretary.
3926—Feb. 15, 24, 27.

ANNUAL MEETING.

HONOLULU RAPID TRANSIT AND LAND COMPANY.

The annual meeting of the shareholders of the Honolulu Rapid Transit & Land Company will be held in Room 609 Stangenwald Building, Honolulu, Saturday, February 29, 1908, at 1:30 o'clock p. m.
WM. WILLIAMSON, Secretary.
3931-7 times

BUSINESS DIRECTORY

VOCAL CULTURE.

Mrs. Hodgson, Teacher of Piano and Singing. Rapid progress. Thorough training. 276 Beretania St., City. See Sign. 3921-1m

Mrs. Anna E. Teetzel, soprano. The Mehan method of voice placing. Studio, Art League, Hours 10 to 2.

PIANO TUNING

Mr. Jas. Sheridan, pianoforte tuner. All orders should be left at the Hawaiian News Co., Young bldg. Phone 294 or cor. Alakea and Hotel Sts.

LOCKSMITH.

See Listings for repairs of Locks, Keys, Music Boxes, Sharpening of Fine Cutlery. Rear Union Grill.

BULLETIN ADS. PAY

EDUCATION

Lessons in French and Italian given by Mrs. Amelia Smith, daughter of Prof. Swift (linguist); rapid method, perfect accent; moderate terms. Studio, 706 Quarry St., corner of Alapai. 3893-1m

UMBRELLAS

Umbrellas re-covered. T. Takata, Fort St. near Kukul.

EMPLOYMENT OFFICE.

For house-help, phone White 2891, Makiki. General Employment Office, cor. Penacola and Beretania.

PLUMBING.

Yee Sing Kee—Plumber and Tinsmith, Smith St., bet. Hotel and Pauahi.

Corporation Notices.

ELECTION OF OFFICERS. C. BREWER & CO., LTD.

At the Annual Meeting of C. BREWER & CO., LTD., held this day, the following officers and directors were elected to serve for the ensuing year:

Chas. M. Cooke, President
Geo. H. Robertson, Vice President and Mgr.
E. F. Bishop, Secy. and Treasurer
J. R. Galt, C. H. Cooke and P. C. Jones, Directors

All of the above constituting the Board of Directors.

Dated, Honolulu, Feb. 6, 1908.
E. F. BISHOP, Secretary.

ANNUAL MEETING. WAIALUA AGRICULTURAL CO., LTD.

The annual meeting of the shareholders of the Waialua Agricultural Co., Ltd., will be held at the office of Castle & Cooke, Ltd., in the Stangenwald Building, on Merchant Street, in the city of Honolulu, H. T., on Thursday, February 27th, 1908, at 10 o'clock a. m.

Notice is also hereby given that at said meeting it is proposed to amend the By-Laws of said Company.

T. H. PETRIE, Secretary, Waialua Agr. Co., Ltd., Honolulu, H. T., February 10th, 1908. 3921-1m

ANNUAL MEETING. EWA PLANTATION COMPANY.

The annual meeting of the shareholders of the Ewa Plantation Co. will be held at the office of Castle & Cooke, Ltd., in the Stangenwald Building, on Merchant Street, in the city of Honolulu, H. T., on Wednesday, February 26th, 1908, at 10 o'clock a. m.

Notice is also hereby given that at said meeting it is proposed to amend the By-Laws of said Company.

T. H. PETRIE, Secretary, Ewa Plantation Co., Honolulu, H. T., February 10th, 1908. 3921-1m

ANNUAL MEETING. THE WAIMEA SUGAR MILL CO.

The annual meeting of the shareholders of The Waimea Sugar Mill Co. will be held at the office of Castle & Cooke, Ltd., in the Stangenwald Building, on Merchant Street, in the city of Honolulu, H. T., on Wednesday, February 26th, 1908, at 2 o'clock p. m.

T. H. PETRIE, Secretary, The Waimea Sugar Mill Co., Honolulu, H. T., February 10th, 1908. 3921-1m

ANNUAL MEETING. WAHIAWA WATER CO., LTD.

The annual meeting of the shareholders of the Wahiawa Water Co., Ltd., will be held at the office of Castle & Cooke, Ltd., in the Stangenwald Building, on Merchant Street, in the city of Honolulu, H. T., on Thursday, February 27th, 1908, at 11:30 o'clock a. m.

T. H. PETRIE, Secretary, Wahiawa Water Co., Ltd., Honolulu, H. T., February 10th, 1908. 3921-1m

ANNUAL MEETING. KOHALA SUGAR COMPANY.

The annual meeting of the shareholders of the Kohala Sugar Company will be held at the office of Castle & Cooke, Ltd., in the Stangenwald Building, on Merchant Street, in the city of Honolulu, H. T., on Saturday, February 29th, at 10 o'clock a. m.

T. H. PETRIE, Secretary, Kohala Sugar Company, Honolulu, H. T., February 10th, 1908. 3921-1m

ANNUAL MEETING. WAHIAWA CONSOLIDATED PINE-APPLE CO., LTD.

The Annual Meeting of the shareholders of the Wahiawa Consolidated Pineapple Co., Ltd., will be held at the office of the Company's Agents, Messrs. Castle & Cooke, Ltd., in Honolulu, T. H., on Friday, February 28, 1908, at 10 o'clock a. m.

WM. WILLIAMSON, Secretary, Wahiawa Consolidated Pineapple Co., Ltd. 3927-1m

NOTICE OF ANNUAL MEETING OF SHAREHOLDERS. OOKALA SUGAR PLANTATION COMPANY.

Notice is hereby given that the Annual Meeting of Shareholders of the Oookala Sugar Plantation Co. will be held at the office of C. Brewer & Co., Ltd., in Honolulu on Wednesday the 26th day of February, 1908, at 10 o'clock a. m.

Dated, Honolulu February 18, 1908.
E. F. BISHOP, Secretary. 3928-1m

Japanese And Railways

HARRIMAN'S MANAGER TALKS ON WAR SCARE AND JAPANESE

The Portland Telegram of Feb. 6 publishes the following interview: "While I can't speak with authority for any other railroad system than our own, I don't believe there is one in the country that regards all this twaddle about war with Japan otherwise than as buncombe and tommy-rot," said Vice President and General Manager J. P. O'Brien, of the Harriman lines in the Northwest, this morning, in discussing the "Japanese section-hand scare." The section-hand scare is, briefly, that in case of war between the United States and Japan, there are enough Orientals employed on American railroads to destroy all means of communication between the East and the West.

"I don't consider there is the slightest or the remotest possibility of an imbroglio between the two countries, and I haven't heard a railroad official express the least anxiety, our war-alarm Mayor to the contrary notwithstanding. Of course, Mayor Lane has a right to entertain and exploit whatever theories of war he may deem the situation merits, but I can't help being amused at his fears.

"I'll tell you why the railroads employ Japanese labor. It is just because they are so much better than the class of white labor that we have been able to get in the past that there is no comparison. The Greeks, Italians, and other offscourings of foreign population are worse than worthless, and for the past ten years the railroads of the country have not been able to get a class of white labor that was worth a penny, and if we did we were forced to pay exorbitant prices. If it hadn't been for Jap labor there wouldn't have been any railroad construction in this part of the country for years past.

"Take white labor, for instance. A gang of men will go to work and they will work ten days. They will get their pay checks and hike for town and get on a roaring drunk and blow in all their money. Four or five days later they may have recovered far enough to come back and ask for their old jobs. And it has been the same story over and over again. Whites are absolutely unreliable, and until the recent stringency they scorned work altogether. Take the Japs, on the other hand. Put 25 of them to work, and you know that they will be at work every day. You can depend on at least twenty out of the twenty-five sticking right to their work and doing it right.

"Perhaps 65 or 70 per cent. of our section hands are Japanese, and they not only work for less money but they give better service. During the busy season of the year, when business in all lines is on the boom, say, from May to September or October, our only salvation has been Oriental labor, and it is during those months that track work should be done. Road-beds and track should not be interfered with during the winter months.

"I appreciate the fact that white men have an excuse for complaining against Japanese labor now, because the labor market is all shot to pieces, but they sang a different song before last fall. They wouldn't look at a job on a section gang then, and they demanded more than they were worth when we needed men on construction work.

"Talk about settling the Japanese question by refusing to employ Japanese labor is all bunk. I fall to see where the so-called Japanese problem is of sufficient magnitude to warrant consideration of any such drastic measures as that. Furthermore, business is business, and big employers of labor are going to hire that class of labor which gives the best service for the wage paid, and which possesses some degree of reliability. And as for the Japanese 'war cloud,' the people who imagine they see anything like that above the horizon should be advised to 'change their brand.' For instance, people like those Tacoma men who saw queer lights and funny flags in the sky the other night.

"Young man, let me ask you one question. Do you imagine for a moment that if the railroads of this country entertained any alarm over the possibility of war with Japan we would keep the Japanese employed all along our lines, where they could destroy hundreds of thousands, yes, millions, of dollars' worth of our property? It is all right for theorists to talk of war with Japan, but if the railroads had any idea of an impending conflict, they certainly would not continue to keep their vast properties in jeopardy by placing them at the mercy of the hypothetical enemy."

Bulletin Business Office Phone 256, Bulletin Editorial Room Phone 185.

Vapo-Cresolene

Whooping-Cough, Croup, Bronchitis, Coughs, Diphtheria, Catarrh.

Cresolene is a Balm to Asthmatics. Does it not seem more effective to breathe than a remedy for diseases of the breathing organs than to take the remedy into the stomach? Cresolene cures because the air, saturated strongly with vapors, is carried over the diseased surface with every breath, giving prolonged and constant treatment. It is feasible to mothers with small children.

Send postal for descriptive booklet. Vapo-Cresolene Co., 100 Fulton Street, New York.

BORN!

Female Rock Hook Worm

behind the bar at the Orpheum Saloon, Next to the Orpheum Theatre.

Plates

Seed Hammer Cramer

We now handle all the standard plates used by photographers.

Honolulu Photo Supply Co.

"Everything Photographic" FORT STREET

Curtain Raiser

One of Anthony Hope's Best Dialogues

The Arrival of the Prince and Princess of the MARDI GRAS

and the most laughable play

Arabian Nights

Given by the KILOHANA ART LEAGUE

Tickets, 25c, 50c & \$1.00

Hats

FOR LADIES AND GENTLEMEN. Latest Shapes and Stylish Trimming. Cleaning of All Kinds of Hats.

UYEDA,

1028 NUUANU AVENUE.

CHICKERING PIANOS

Premient in Quality. BERGSTROM MUSIC CO., Ld.

CURE YOURSELF!

Use Bic Q for muscular discharges, inflammation, irritations or alterations of various membranes of the bladder, urethra, and not acting on the prostate gland or the bladder.

Send postal for descriptive booklet. Bic Q, 100 Fulton Street, New York.

WANTS

ONE CENT A WORD

One Cent a Word Results

One Cent a Word Results

WANTED

Advertisements Under this Heading One Cent Per Word Each Day. No Advertisements Inserted for Less Than Ten Cents.

Part Hawaiian of fair address and intelligence, for clerk; good opportunity for the right man. Address "this office," "Man." 3891-1f

A few customers for pure milk. Apply at 1837 College St. 3923-1f

Clean wiping rags at the Bulletin office. 3923-1f

SITUATION WANTED.

Experienced bookkeeper desires to keep small set of books evenings and Sundays. Address "W." this office. 3930-3f

Position as office clerk or salesman; can give first-class references. Address "A. H." this office. 3931-3f

TO LET

Advertisements Under this Heading One Cent Per Word Each Day. No Advertisements Inserted for Less Than Ten Cents.

Large house on Beretania St. next to Queen's Hospital; rent very cheap. W. W. Chamberlain, Judd Building. 3849-1f

LOST

Advertisements Under this Heading One Cent Per Word Each Day. No Advertisements Inserted for Less Than Ten Cents.

Hay horse, lost Friday night, figure "2" on back leg. If found, please return to K. Miyata and receive reward, Nuuanu near Beretania. 3927-1f

Palama, all-white, 8-months-old fox-terrier; cut tail; green leather collar. Reward if returned to this office. 3911-1f

MILLINERY

Spring Flowers, New Ribbons, Feathers and Hats Arrived. Wire frames made by order.

OUR PRICES REASONABLE.

K. ISOSHIMA.

30 KING ST. NEAR BETHEL. GENERAL ARTHUR CIGAR

Now better known than the General himself.

M. A. Gunst & Co.

THOMAS FITCH, ATTORNEY-AT-LAW

Room 19, Campbell Block, Honolulu, T. H.

BEST OF ALL Puritan Butter

HENRY MAY & CO., LTD., PHONE 22.

SPRING MILLINERY

of the latest designs will soon be here

MISS POWER'S

Millinery Parlors, Boston Bldg.

Unique Chinese Goods

Wing Wo Tai & Co. 941 NUUANU ST

PIANOS

Repaired and Thoroughly Overhauled. EXPERT TUNING A SPECIALTY. GEORGE L. LENORD, Office, Wall, Nichols. Phone 261.

FOR SALE

Advertisements Under this Heading One Cent Per Word Each Day. No Advertisements Inserted for Less Than Ten Cents.

500 ft. 8-in. cast-iron sewer pipe; 1 all-copper Truax sterilizers tin lined; 1 all-copper water still, tin lined; 1 all-copper 40-gal. steam jacket kettle; 2 all-copper wash-bollers. Emmeluth & Co., Ltd., 145 King St.; Phone 211.

A valuable collection of stamps. This collection is the property of the widow of the late H. W. Bowen, and is the result of his effort in many years of labor; they can be seen at the Hawaiian News Co., Young building. 3911-1f

Fine corner lot in Makiki. Curbing, water, fruit and ornamental trees and all improvements. Two minutes' walk from cars and Punahoa College. Address R. F. this office.

\$500.00 CASH—200 x 300 ft. 9-room house, Kaimuki. Address Box G., this office. 3909-1m

Beef cattle for sale at Kahu, Hawaii. Apply Col. Sam Norris, Waiohinu.

White Pekin ducks and eggs. 1941 South King St. 3906-1f

Let the soap do the work

Pau-Ka-Hana

Made in Honolulu.

Honolulu Soap Works

F. L. WALDRON, Distributor.

Artistic WALLPAPERS

ATTRACTIVE PRICES

Wilder & Co.

NOTARY PUBLIC at BULLETIN OFFICE. Phone 256.

WING CHONG CO.

KING ST. NEAR BETHEL. Dealers in Furniture, Mattresses, Etc., Etc. All kinds of KOA and MISSION FURNITURE Made To Order.

HONOLULU IRON WORKS

Improved and Modern SUGAR MACHINERY of every capacity and description made to order. Boiler work and RIVETED PIPES for irrigation purposes a specialty. Particular attention paid to JOB WORK, and repairs executed at shortest notice.

F. S. Nagami.

Kodak Developing, Printing, Enlarging and Interior Photographing.

HOTEL ST. bet. Nuuanu & Bethel.

WHEN

You Want Electric Wiring Done or Private Telephone Installed or Dry Batteries, call the UNION ELECTRIC CO., 69 Beretania St. Phone 315.

\$4250

Home for Sale

House new and attractive, three bedrooms, parlor, diningroom, kitchen, bath, lanai, &c.

\$4250

Bishop Trust Co. Ltd.

924 Bethel Street,

DAVID DAYTON

137 MERCHANT STREET.

LOTS FOR SALE

IN KAPIOLANI PARK ADDITION and other desirable localities.

For Sale at a Bargain—Premises at Hanalei on the beach, a two-story house and furniture, at a bargain.

Hallwood,

The

Cash Register

Hawaiian Office Specialty LIMITED

Co., 931 Fort St. PHONE 143.

Meats

Fresh, wholesome, and of every variety at

THE PARAGON

Beretania, Alakea, and Union. Phone 104.

For Over 60 Years

Mrs. Winslow's Soothing Syrup has been used for over SIXTY YEARS by MILLIONS of Mothers for their CHILDREN with TEething, with perfect success. IT SOOTHES THE GUMS, ALLAYS ALL PAIN, CURES WIND COLIC, and is the best remedy for DIARRHOEA. Sold by Druggists in every part of the world. Be sure and ask for Mrs. Winslow's Soothing Syrup and take no other kind. 25 Cents a Bottle.

An Old and Well-tried Remedy

PAINTING, PAPERHANGING AND TINTING.

General Jobbing A Specialty. Dealers in Wall Paper, Paints, Oils, Etc. P. O. Box 914. 208 Beretania St. near Emma W. B. KAM, Mgr.

You're Particular

about the clothes you wear, aren't you? Rather proud of being well-dressed?

And yet, your House needs a new COAT! Everybody knows it; and people have forgotten that you had it painted only a year ago. It's too bad you can't afford it this Spring; but, if you get GOOD pure paint next time, it will WEAR for three or four years, and LOOK WELL all the time.

Pure Prepared Paint

is guaranteed to look well and wear well.

Lewers & Cooke, LIMITED

Agents. 177 S. King St.

BUTTERNUT BREAD is delicious at

THE PALM CAFE

Hotel Street near Fort.

Ever Stop To Think?

Of the money you would save by having your clothes made to your measure by us. Same price as the ready-to-wear.

Geo. A. Martin

HOTEL ST.

ICE

manufactured from pure distilled water. Delivered to any part of city by courteous drivers.

DAHU ICE AND ELECTRIC CO., Kewalo. Telephone 523

CHOICE CUT ROSES, CARNATIONS VIOLETS, ETC., ETC.

Mrs. E. M. Taylor, YOUNG BUILDING TEL. 339

Phone Main 147

FOR THE Honolulu Clothes Cleaning Co.

Suits Pressed At Short Notice and Quick Delivery.

EAGLE DYEING AND CLEANING WORKS

Fort Street. Phone 575.

Steinway AND OTHER PIANOS. THAYER PIANO CO.

156 HOTEL STREET. Phone 218. TUNING GUARANTEED.

PAINTING, PAPERHANGING AND TINTING.

General Jobbing A Specialty. Dealers in Wall Paper, Paints, Oils, Etc. P. O. Box 914. 208 Beretania St. near Emma W. B. KAM, Mgr.

BULLETIN ADS. PAY

RIGHT or WRONG

Franklins are either desperately wrong or everlastingly right

And you ought to know which. An air-cooled motor that cools better than water, and yet produces a more efficient cylinder-wall temperature is either a big mistake or a big advantage.

Light-weight construction that is stronger and safer than heavy construction is either a foolish fad or advanced common sense.

Complete comfort built into the very frame of the car and net ability, rather than over-weighted power-rating, are either a passing notion on the longest step forward yet taken in automobiling.

You owe it to yourself to investigate these questions before you buy a motor-car.

Come in here and see the Franklin before you decide.

E. O. Hall & Son, Ltd.
FRANKLIN AGENTS.

Beautiful Honolulu

SEEN IN AN AUTO RIDE FOR

\$5.00 an Hour

Just call 290 on the 'phone and ask for QUINN.

New Styles

Just arrived ex Alameda. The best quality and latest patterns in

SILK TAFFETA SATIN Ribbon

In fancy plaids, striped and flower designs. LOWEST PRICES IN THE CITY.

YEE CHAN & CO., cor. Bethel & King

Union Gas Engines

The most durable and efficient engines made. Ask the owners.

Worthington Pumps

We have several in stock and a large shipment of all sizes on the way.

VON HAMM - YOUNG CO., LTD.,

Agents.

Newmarket Blister

For Sidebone Spavin, Ringbone, Enlarged Tendons, and old and persistent cases of lameness.

SAFE CURE and EFFECTIVE.

Sweating Blister

Acts like magic on shoulder, hip, loin and early tendon lameness.

Obtainable at all druggists and

POTTIE & SONS, Honolulu

Tel. 250



Mister!

you have lost a coat. Let us supply you with a new one.

This Is Not

A Tailor's Advertisement.

We are referring to your house—it needs a coat of paint and needs it badly. Let us fit it with a new coat of paint—Real Paint put on by Real Painters.

Stanley Stephenson,
THE PAINTERPHONE 426.

SPORTS

Local and National

EDITED BY CHARLIE ALBRIGHT

CAFE CHANTANT DELIGHTS ELITE OF HONOLULU

Weird and Wonderful, Funny and Foolish, French and Otherwise—
Show One Grand Success

"Bong sour, Monseors." And so the long-expected Cafe Chantant, transplanted especially from Gay Paree for the occasion with all the embellishments and flourishes such as are common in the Bohemian section of that "ville plus charmant," began out by the sea Saturday night.

From all points of view, save one, the affair was a complete success. Society was there. The real "bong tons" of Honolulu put on its glad rags and came in a bunch to the show. Nothing was lacking. James Wilder, prince of good-fellows and entertainers, to whom all credit for the origination of the clever stunts is due, was in his element. His Parisian shoulder-shrugs and gestures, when introducing the Beauty Show (which was a beauty) or a singer, or gently requesting Prof. Berger's merry minsters to oblige "si vous plait" with a little noise, were really an education in themselves. All in all, Jamie was really delicious; that is, his manners were, and in a great part it was due to his cleverness in introducing and announcing that the stunts went off so perfectly and easily.

Of course, the sad sea waves kept saying things, thus preventing many people in the rear guard from hearing everything that was said on the platform—but no one minded. It was for the yacht. The Royal Hawaiian Band started things going in the first canto with a slice of music, decidedly French. In fact, it was so French that few understood it—but no one minded. It was for the yacht. Chester Livingston sang that splendid Scottish song, "Oh, for a Breath of the Moorland," and received much palm-praise for the rendition.

"Small Farming" as seen through the eyes of the notables of Honolulu and vicinity, and told by C. H. McBride, was one of the cleverest things that has been heard for many a long day. It fairly bubbled with (though Mac couldn't help it) and was full of slams that had real points to them—which means a lot.

"Marching Along," sung by Chris Jenkins, was so good that another song was called for. Chris obliged by singing a very appropriate (to the occasion) drinking song.

"I Can't Get 'Em Up" and all the other tuneful bugle calls of the United States Army were sounded by three tooters from Fort Shafter, Messrs. Schwartz, Lundberg and Oakley, and they did it well. They played in twos and threes and singles, and every call was perfect. Rah for the boys in Blue!

J. Walter Doyle described entrancingly the wonderful qualities of the "\$10,000 Beau on the Inside. Come In and See." Walter should get a position as a side-show spleler. He is a side-splitter when he starts talking. However, he was cut short in his vivid description by the appearance of a nutty Italian in the person of Clifford Kimball, who had a blood-thirsty guise on. The "beautiful, beautiful girls" took a fancy to the man with the red rag tied around his beetling brow, and sang a funny song about dancing without "moulin de feet." The beauties were W. Williamson, Mannie Phillips, Dr. Hodgins and Harry Cobb. "Billie" Williamson won the hearts of all with his mezzo-lyric-suprano-adultissimo voice, and each of the others had numerous admirers. Mannie Phillips had the real ideal feminine make-up—just like a lady.

After the Sympathy (Symphony, of course.) Orchestra had vied with the aforesaid sad sea waves with a little pale-gray music, with a few storms thrown in now and then to change the theme, Mrs. Marion Crook sang beautifully a French melody and answered with a delicious encore.

which was made up of the following: Mrs. Ranney Scott, Mrs. Hugo Herber, A. Wall and Dick Wright. Commodore Cooper of the Hawaii Yacht Club was bravely toasted at 11 o'clock, and the Commodore responded, thanking all for the interest shown in the yacht. Mr. McInerney, "Trans-Pacific Man," whose unflagging enthusiasm in all things pertaining to the upbuilding of a true yachting spirit in the Islands has in a great part made the construction of our racer possible, gave an excellent address. He thanked the press for their work, and paid a splendid tribute to Alexander Lyle, who has given so much of his time and thought to the yacht. He also heartily thanked James Wilder for the part he played in originating the Cafe Chantant, the proceeds of which go to the yacht. Mr. McInerney reminded the people, however, that at least \$1500 was yet to be received before the Hawaii would be clear of debt.

Between the various stunts dancing was interspersed all during the evening, and continued until a late hour after the regular show was completed.

"Honor to whom honor is due," James Wilder, W. McInerney, Walter Doyle, and Chas. Wilder deserve the thanks of Honolulu for the conception and successful carrying-out of the Cafe Chantant. Unfortunately, there was a misunderstanding in the serving of the "hot-dogs an," but it was through no fault of the Yacht Committee or those in charge of the Cafe Chantant.

All in all, it was one grand and glorious splurge of success, and—it was for the yacht.

Prosit!

SECRETARY ANNOUNCES \$500 FOR YACHT

Secretary McInerney of the Yacht Committee has announced that the sum so far received for the Hawaii from the Cafe Chantant amounts to \$500. Many people thought there were at least 1500 or 2000 people at the show Saturday night, but it is easy to over-estimate on such an occasion. As it was, the spacious grounds in the open-air were filled to overflowing. More money may yet come in, as all of the tickets have not been accounted for.

GREAT DAY AT COUNTRY CLUB

Many Ladies Play Golf—Mott-Smith Is Winner

Immediately after the Floral Parade Saturday a great many enthusiasts of the golfing game took the beautiful ride up to the Country Club and spent the afternoon there. Not a few of the automobiles were among those in the parade, and as the gay decorations were still in evidence the scene took on the appearance of a gala day. There were several surprises in store for the visitors. The clock golf course was in splendid condition, and many of the fair sex availed themselves of the opportunity to indulge in the mild sport. However, the day was an ideal one for the links, and the crowd that sang its way around the pretty course was one of the largest that has played at the Country Club this winter.

The flag-raising ceremony was carried out with all due impressiveness. The flag was hoisted by ex-Governor Carter and unfurled by G. P. Wilder. In the golfing, thirty players took part in the regular medal play. E. A. Mott-Smith was the bright particular star of the day, getting the first round in 43 and the second in 48. Dr. High was the next best, taking second place with a net

score of 89. He also made the best round of the day, doing it in 37.

The following are the scores:

Handicap	1st Round	2nd Round	Gross	Net Score
Austin White	48	41	89	89
Oscar White	50	54	104	2 102
H. H. Walker	61	52	113	4 109
A. F. Ewart	52	50	102	18 84
C. S. Wright	52	46	98	15 83
E. W. Sutton	49	55	104	18 86
F. Halstead	43	47	90	2 88
J. O. Young	48	46	94	6 88
C. Kimball	51	53	104	18 86
J. G. Spencer	67	69	136	18 118
H. A. Wilder	58	45	103	9 94
J. D. Gaines	46	53	99	11 88
E. A. Mott-Smith	43	48	91	18 73
H. Hitchcock	58	58	116	18 98
Geo. Angus	44	45	89	se. 89
J. Farwell	64	65	129	18 111
T. M. Harrison	50	55	105	18 87
H. Roth	67	73	140	18 123
T. Gill	46	66	112	5 107
S. G. Wilder	55	56	111	5 106
S. G. Wilder, Jr.	62	54	116	18 98
M. Robinson	48	56	104	18 86
Dr. Hutchinson	61	60	121	18 103
Alex. Walker	56	54	110	18 92
E. C. Edmunds	55	52	107	10 97
Dr. High	37	46	83	3 80
J. D. McInerney	56	57	113	15 98
D. McCallum, R. J. Buchly and H. C. Waldron	did not finish.			

SWEET VIOLETS LAND HEAVILY ON AALA A.C.

The Sweet Violets yesterday forenoon defeated the crack Aala A. C. baseball team by the decisive score of 13 to 6. The game was hardly up to the standard of those usually played on this diamond, yet it was interesting from start to finish. The Sweet Violets started off with a jump, landing two scores in the initial inning and annexing four more in the second. The seventh canto, however, seemed to be a Jonah for the Aala team, for their rivals slammed the ball for a total of six more runs, making their counts add up to 13 all told.

This tells the story:

AALA A. C.	ABRBH SB O A E
Sam Hop, rf.	3 2 0 2 0 0 0
Clément, c.	4 1 0 1 4 2 1
Arcia, 2b.	5 2 3 3 3 6 0
Asam, p.	5 1 1 1 1 1 0
Leslie, 2b.	3 0 0 2 3 2 0
Kola, ss.	4 0 1 1 1 1 2
Hoopal, 1b.-cf.	3 0 0 0 7 0 0
Souza, cf.-if.	3 0 0 2 1 0 1
Ahop, lf.	1 0 0 0 0 0 0
Britto, 1b.	3 0 0 0 4 0 2
Totals	34 6 5 12 24 12 6

SWEET VIOLET A. C.	ABRBH SB O A E
Ah Hook, lf.	5 1 1 1 0 0 0
N. Peterson, 1b.	5 1 2 1 13 0 0
Kuaili, cf.-ss.	5 3 2 0 3 5 0
Flores, c.	5 1 3 1 7 2 0
Laul, 3b.	5 1 0 0 3 5 2
Riley, 2b.	3 2 1 0 1 0 1
Ako, ss.-cf.	5 2 1 2 0 1 1
Wal Wing, rf.	5 0 0 0 0 0 1
Kapal, p.	3 2 2 1 0 2 0
Totals	41 13 12 6 27 15 5

Score by innings:
1 2 3 4 5 6 7 8 9
Aala A. C. 1 0 2 0 3 0 0 0 0—6
Sweet Violets 2 4 1 0 0 6 0 *—13

SPORTIVE SPLURGES

A special meeting of the Hawaiian Tennis Association has been called for tomorrow afternoon at 5 o'clock, in the club-rooms of the Pacific Tennis Club.

The championship match in the Punahou tennis tournament will be played this afternoon between A. J. Lowrey and W. Engle, present champions, and Stanley Kennedy and W. Lidgate, challengers.

BAND CONCERT
The Hawaiian Band will play the following program at Emma Square at 7:30 this evening:
PART I
March: "The Spirit of Liberty"..... Souza
Overture, "Fra Diavolo"..... Aubert
Gavotte: "Dawn of Love"..... Tobani
Selection: "Robin Hood" (by request)..... De Koven
PART II
Vocal: Hawaiian Songs, ar. by Berger
Selection: "The Pirates of Penzance"..... Sullivan
Ballad: "By the Sea"..... Schubert
Waltz: "Lacticia"..... Fahrbach
"Star-Spangled Banner"

LEAP YEAR DANCE
(Special to The Bulletin)
Walluku, Maui, Feb. 21.—The ladies of the Catholic Aid Society will give a leap year dance at the Knights of Pythias hall Saturday evening, Feb. 29. As the object for which the aid is wanted is a worthy one, many of Central Maui's fair ones will make it their business to see that the dance is well attended.

WHITNEY & MARSH

Wash Fabrics

First Showing of New Spring

A pretty assortment of new designs and colorings in sheer materials

from 20c yd.

SEE WINDOW DISPLAY.

"DOROTHY DAINTY" Ribbon Sets.

Fine, Fresh

MILCH COWS

For Sale

Club Stables
Tel. 109

WE ARE AGENTS FOR

Winton Touring Car

1908 MODELS

The Finest Cars Ever Seen in Honolulu. Call and See Them.

Associated Garage,
Limited.
MERCHANT ST. PHONE 388.

LOOK

at the automobiles, buggies and carriages we have recently overhauled and painted

THEN SEE US.

W. W. Wright Co.

King Street near South
Tel. 252

AUTOMOBILES and CARRIAGES

Schuman Carriage Co.,

LIMITED.

Smoke

El Palencia

The Cigar of Quality.

HAYSELDEN TOBACCO CO., LTD.

P. H. Burnett

Attorney; Notary; Conveyancer; Real Estate; Mt'g. Loans; Collections. Agent to Grant Marriage Licenses.
Office 79 Merchant St. Phone 310.

Increase your savings by burning

G A S

Honolulu Gas Co., Ltd.
Bishop St.

FULL DRESS and NEGLIGEE SHIRTS

From \$1.25 to \$2.00 for the best on earth.

UNDERWEAR FOR MEN. SHORT DRAWERS WITH SHIRTS TO MATCH, \$1.00 the Suit.

SCRIVEN'S ELASTIC SEAM DRAWERS, full length.

STRAW HATS from \$2 to \$3. LATEST BLOCK DERBYS, \$5.00.

NECKWEAR, beautiful patterns and latest shapes. DRESSY TIES from Twenty-five to Seventy-five Cents.

BEAUTIFUL HALF HOSE, nobby patterns and fashionable shades, TWENTY-FIVE TO SEVENTY-FIVE CENTS.

L. B. KERR & CO., LTD.,

ALAKEA STREET NEAR HOTEL.