

From San Francisco:
Chiyo MaruSept. 21
For San Francisco:
MongoliaSept. 18
From Vancouver:
MakuraSept. 17
For Vancouver:
MaramaOct. 13

EVENING BULLETIN



3:30 EDITION

Bulletin Advertising is Good Times Advertising for Sellers and Buyers

VOL. XI, NO. 4419.

8 PAGES.—HONOLULU, TERRITORY OF HAWAII, MONDAY, SEPTEMBER 20, 1909.—8 PAGES.

PRICE 5 CENTS.

LEIGHTON TELLS OF GREATER HONOLULU ARMY POST CONSTRUCTION ORDERED

STRIKEBREAKERS AT WAIPAHU ARE NOT NEEDED

Joyful Demonstration At
Station Last
Saturday

SONGS AND CHEERS FOR LABOR BUREAU MAN MEAD

Five Hundred a Day Now Going to
Honolulu Plantation Are All
That Remains of Strike-Breaking
Workmen.

No more strike breakers for Oahu
plantation.
This was the word that was passed
down the line on Saturday, and when
the afternoon labor train came in
there were great doings at the station.

Oahu plantation doesn't need the
strike breakers. Manager Bull has
so far perfected his organization
that was disrupted by a walk-out of
the Japanese that beginning this
morning he will carry on the work
on what might be termed a normal
basis. He has finished his planting
on the twentieth of this month.
Previous years it was finished on the
eleventh of September, so he is in
pretty good condition despite the up-
heavals and labor troubles.

Mr. Bull must have used his
strike breakers pretty well, judging
from the joy at the station on Sat-
urday night, and Labor Bureau
Manager R. D. Mead came in for a
send-off from the men he has been
employing that made the welkin
ring.

The strikebreakers' force, made
up largely of Hawaiians, had been
notified that Saturday was the last
day for Waipahu. When their train
came in they were a happy lot, not-
withstanding they had lost their
jobs. About one hundred men had
passed the gate when those remain-
ing struck up "Aloha Oe," and it
was well sung. Each man as he
got his pay check had a pleasant
word for Mr. Mead, and the greater
part of them remained near the sta-
tion, still singing and happy. When
the paying off was finished a great
crowd of the Hawaiians gathered in
the station and gave cheer after
cheer for Mr. Mead, and every last
one of them shook hands, thanked
him for giving them jobs for so long
a time and at such good pay, and
then with a final cheer went home.

(Continued on Page 5)

VESSELS OFF FOR MAALAEA

Cruisers Are Ready For
Unusual Speed
Tests

When the old racing captains on
the Mississippi started on their
record trips up and down the Father
of Waters with a rival close astern
they used to send a little nigger boy
down to sit on the safety valve. A
high degree of speed was maintained
as long as the little nigger boy
lasted.

There are no juvenile darkies on
board the Pacific fleet, and their
presence is not required with the
invention of more modern machin-
ery, but figuratively the entire fleet
will be sitting on the safety valves
during the speed test off Maalaea
Bay, Maui. If the safety valves
stand the strain all is well; if some
chink of mechanism gives up the
ghost and retires from active ser-
vice there will be large gobs of
pipkia for Uncle Sam's men on the
fighting machines.

The Washington left her wharf at
seven this morning and the Mary-
land and Pennsylvania were close
behind. The vessels formed in squad-
ron formation as soon as they were
all outside the reef and disappeared
over the horizon to the scene of
their speed tests. Chief of Staff
Captain Benson has arranged to
notify Honolulu and the world in
general of the result of the tests.

The Colorado remains. The Hon-
olulu Iron Works will commence
work on her today making repairs
to her boilers and tubes, and, al-
though it is rumored that she will
return to Mare Island, it is improbable.
The fleet will return next
Saturday and will reconal and pre-
pare for the next leg of the voyage.
The Glacier will arrive on the 29th
with supplies for the vessels.

LLOYD CASE BEFORE SUPREME COURT OCT. 4

In the case of Lloyd against the Ter-
ritory, the Supreme Court will hear
the merits of the suit on October 2.
Lloyd sued the Territory some time
ago for money alleged to be due him
for extra services rendered the Leg-
islature. The Circuit Court ruled that
the work done was included in the
regular service of the stenographer,
and plaintiff's first demurrer was not
sustained. In review of the demurrer
filed by the Territory, it was lost, and
the matter on briefs now comes before
the Court for final hearing.

BULLETIN ADS PAY

New Post Is Soon To Be Built

WASHINGTON, Sept. 20.—It was
stated today at the War Department
that construction would soon begin
on an army post at Honolulu.

This probably has reference to
the development of Fort Shafter to
a larger post, or it may have to do
with the barracks to be erected at
Waikiki. There is even a possibility
that it means the permanent post
at Leluchan, as the people of the
east are not always acquainted with
the magnificent distances of the is-
land.

Great Storm Sweeps Gulf

HAVANA, Sept. 20.—A million
dollars' damage has been done by a
storm that has swept Pina del Rio.

NEW ORLEANS, Sept. 20.—A
fierce storm is raging along the Gulf
coast. The Mississippi river at this
port has risen three feet.

'Quake Record

WASHINGTON, Sept. 20.—The
seismographs in this city recorded
an earthquake this morning located
four thousand miles distant.

EUROPEAN BEET CROP IS SHORT

One Million Tons To The
Bad Cause Of
Flurry

"The European beet crop is a mil-
lion tons short," said Harry Armitage
this morning, in discussing the sugar
situation. "Which is the cause of the
recent rise in prices, and the flurry
on the market."
"What figure does Oxnard cut in
the sugar world?" he was asked.
"None whatever. He is out of the
game. The Sugar Trust is the whole
thing. What they say goes as far as
sugar is concerned."

INSURE YOUR HOME and STOP WORRYING!

EVERY TIME THE FIRE WHIS-
TLE BLOWS YOU HEAR THE EX-
CLAMATION, "I WONDER IF IT'S
NEAR MY PLACE?"

LET US SHOW YOU HOW
CHEAPLY YOU CAN INSURE
YOUR HOME AND PERSONAL EF-
FECTS AND ESCAPE THIS.

Insurance Department



Hawaiian Trust Company
Limited

BASEBALL SCORES

SAN FRANCISCO, Sept. 20.—As
the results of yesterday's games, the
scores piled up as follows:
AMERICAN.
Boston 6, Chicago 5.
New York 9, Cleveland 4.
Washington 2, St. Louis 3.
Philadelphia 4, Detroit 3.
Barry was spiked by Cobb in at-
tempting to steal second, and Cobb
was put out of the game. There
were 29,275 people in attendance.
Batteries were: Plank and Living-
stone, Summers and Stange.
NATIONAL.
Pittsburg 12, Brooklyn 3.
Chicago 3, New York 2.
St. Louis 0, Philadelphia 2.

LEIGHTON URGES A DEFINITE LAND POLICY

Insists People Should
Have Voice In
Councils

Marston Campbell has in his hands
an exhaustive report prepared by M.
O. Leighton, chief hydrographer of
the United States Geological Survey,
who made an extended visit in the
islands in connection with the work
mapped out for him by the Federal
Government upon the request of Sup-
intendent Campbell. In beginning
his report Mr. Leighton says:
"I have the honor to submit herewith
a report of observations and conclu-
sions, resulting from a reconnais-
sance of the four major islands of the
Territory during the period July 29th
to September 9, 1909.

"This reconnaissance is the direct
result of a visit made by myself to
Washington, D. C., in May 1909, for
the purpose of securing assistance
from the United States Geological
Survey. The representations made by
you at that time included among other
things the following:

"First: That the Territory of Haw-
aii was in urgent need of an invest-
igation of water resources.

"Second: That owing to a peculiar
ruling of the Comptroller of the U. S.
Treasury the Territory of Hawaii has
been excluded from participation in
the general appropriations of the Ge-
ological Survey, although other Ter-
ritories were not likewise excluded.

"Third: That pending the enactment
in Congress of legislation that would
remove the discriminatory effect of
this decision, the Territory of Hawaii,
recognizing the necessity for im-
mediate action, had provided funds suff-
(Continued on Page 4)

A replication of the answer of the
respondent has been filed by Holmes,
Stanley & Olson, attorneys for the
Bishop Trust Co., in the case of the
Bishop Trust Company as adminis-
trator of the estate of Lahapa Mani-
awa against John F. Colburn.

Two deaths occurred from dipht-
heria in Honolulu during the past fif-
teen days. Seven deaths from vep-
erulosis for the period of fifteen days
ending September 15, are reported in
Registrar M. H. Lemon's regular re-
port.

Mrs. J. J. Dowling is registered at
the Hawaiian hotel at present, and
may stay in town for a few days.

NO BETTER MEALS ANYWHERE

THAN ARE SERVED AT THE

PALM CAFE
HOTEL ST., NEAR UNION.

FLEET
OF FOOT

Our boys get there in the short-
est possible space of time.

TERRITORIAL MESSENGER
SERVICE.
Telephone 361.

Johnson Is Reported Dying

ROCHESTER, Minn., Sept. 20.—
Governor Johnson is reported to be
dying.

Governor Johnson was operated on
a few days ago for hernia and his
life has been hanging by a thread
ever since. He rallied sufficiently
to dictate a message of welcome to
President Taft, but yesterday suf-
fered a relapse.

Atlantic Fleet For New York

HAMPTON ROADS, Sept. 20.—
The Atlantic fleet sailed today in
full force for New York, where it
will take part in the great interna-
tional naval and mercantile marine
demonstration on the Hudson river
in connection with the Hudson-Pul-
ton celebration.

Idzuma Sailed For Honolulu

TOKIO, Sept. 20.—The Japanese
cruiser Idzuma sailed today for San
Francisco by way of Honolulu. The
Idzuma bears Prince Shimazu, who
will represent Japan at the interna-
tional assembly at the Portola Festi-
val in honor of the rehabilitation
of San Francisco.

CONSUL UYENO IS BETTER

Nagamoto Is Improving;
Cluney Charged
In Court

Japanese Consul General Uyeno, ac-
cording to Mr. Ito, chief secretary of
the Consulate, is gradually recovering
from his injuries. He is being at-
tended by Dr. Katsuki at his official re-
sidence on Nuuanu street. Although
still unable to move about, he is rest-
ing comfortably.

Nagamoto, the coachman, according
to Dr. Haida, is also improving.
J. C. Cluney, Jr., the chauffeur, who
smashed the Consul's carriage and
injured the occupants, appeared in the
Police Court this morning, charged
with driving an automobile heedlessly
to the safety of others. He was rep-
resented by A. G. M. Robertson, who
had his case continued until Septem-
ber 28.

Don't Forget—that
we secure, pack
and ship fruit of
all kinds.

Island Fruit Co.,
72 King St. Phone 15.

Cold
Choco-
lates
for that cold in the head.

Hollister Drug Co.

RIOT PROSECUTION RESTS ITS CASE

New Witness Tells Of
Actions Of The
Mob

The prosecution in the Waipahu riot
cases rested this morning after a new
and strong witness had been placed
on the stand to testify to the riotous
gathering of Japanese at Waipahu on
June 8. The witness was George Rob-
inson, an employe of the city and
county road department and his story
was told in a straightforward manner
that carried conviction.

Robinson told of being present at
Waipahu on the day of the riot, testif-
ying to seeing the returning workmen
attacked by the enraged mob, the
yells of which he said could be easily
heard for a mile. Robinson's testi-
mony should prove ample to contro-
vert the attempt of the defense to
make it appear that "one stick and
one stone" was thrown by the strikers.
Robinson told of seeing many stones
and numerous sticks being hurled at
the police after they had made the
arrest and that he saw the missiles
strike the horses of the police and the
houses nearby.

Under cross-examination Robinson
was unshaken and adhered to the
main portions of his story of the ac-
tions of the mob on the day of the
riot.

The other witnesses placed on the
stand this morning were William
Wooda, Geo. to Kamaka and Muriya-
ma, the official Japanese interpreter,
who gave his version of the belliger-
ent interpretation to be placed upon
the Japanese word "tataka."

REVISE ANTI-TRUST LAW.

DES MOINES, Iowa, Sept. 20.—
President Taft spoke here today be-
fore a great assembly of citizens.
He advocated the creation of an In-
terstate Commerce Court to deal
with the great interstate commerce
problems, and also declared for a
revision of the anti-trust law.

SUGAR.

SAN FRANCISCO, Sept. 20.—Su-
gar—96 degree centrifugal, 4.235
cents. Previous quotation, 4.21.
Beets—88 analysis, 11s 8 1/4d.
Parity, 4.47 cents. Previous quota-
tion, 11s 9 d.

Governor Frear has received a let-
ter from Dr. Tempest Anderson, the
noted English authority on volcanoes,
who is now in Canada. Dr. Anderson
states that his lectures on the Vol-
canoes of Hawaii were well received
at Ontario and that the people appear
to be much interested in Hawaii.

Chalmers A. Graham is in town
again, wearing his good looks and
perpetual smile. Mr. Graham is on
one of his regular tours to the Orient
and will remain in Hawaii for a month
or six weeks.

Judge Robinson this morning signed
an order confirming the sale of real
estate by Abraham Kaleikua, guardian
of Peter, Rose, James H. and Eliza-
beth H. Niolo.

Judge Robinson this morning granted
a decree of divorce to Flora Apao
against James Apao. Cruelty was the
grounds alleged in the complaint.

R. W. Filler, superintendent of the
Hilo railroad, is in town on a busi-
ness trip. He will probably remain
for a week or so.

MRS. SCOTT BRINGS SUIT AGAINST BABBITT

Ousted Principal Of
Holualoa Asks
Damages

DENIES CHARGES OF
INHUMAN CRUELTY

Declares Department of Public In-
struction Is Guilty of Breach
of Contract and Unfair Meth-
ods.

Mrs. Nettie L. Scott, one time
principal of the Holualoa School,
Kona, is not going to rest content
with the mandate from the Depart-
ment of Public Instruction, which
told her briefly and in pointed terms
that her services were no longer re-
quired at Holualoa.

Superintendent of Public Instruc-
tion Babbitt this morning was served
with the copy of the complaint in
an action for \$1500 damages brought
by Mrs. Scott in the Third Circuit as
an aftermath to the difficulties that
resulted in her dismissal as the
principal of the Holualoa school
and the resignation of her assistant,
Mrs. Maydwell, who, it is under-
stood, will be provided with another
position in some other district.

The suit bears the title of Nettie
L. Scott versus the Department of
Public Instruction of the Territory of
Hawaii.

The complaint states that on Aug.
31 last Mrs. Scott completed twenty
years of continuous service in the
employ of the Department, and that
during that time her work was for-
mally commented upon in numerous
reports.

"Only once during the whole of
(Continued on Page 3)

KILAUEA LAVA IS RISING TO NEW ACTIVITY

George Lycurgus has received the
following wireless from Demosthenes
at the Volcano House:

"Crater extraordinarily active."
"Lava rising very fast. Approx-
imately one hundred and twenty
feet from the top."

This means that the increased ac-
tivity evident when the Congressional
party was at the crater has continued
with new vigor. According to all ap-
pearances the lava is rising and will
soon overflow into the floor of the
crater. As a matter of fact the best
time to see the action is when it is
possible to sit on the edge of Hale-
maumau a comfortable distance from
the heat as at present.
Efficient in amount to organize and start
the investigations.
Mr. Leighton then goes on to say



Particular
Men

always find satisfac-
tion in

ALFRED
BENJAMIN
CLOTHES

Choice new materials and full line of sizes
now in stock

THE KASH CO., LTD.,

Cor Fort & Hotel Sts.



Rice & Hutchins

SHOES

Widely-Known and
World-Famed

This illustration is one of them called the TOM SMART
—a tan Russia, fancy tip Oxford. Come and look this
line over.

Manufacturers' Shoe Co., Ltd.,
1051 Fort St. Tel. 282.

MASONIC TEMPLE

Weekly Calendar

MONDAY
Leah Chapter No. 2—Regular.

TUESDAY
NIGHTS
Honor Commandery—Red Cross.

WEDNESDAY
FRIDAY
SATURDAY

All visiting members of the order are cordially invited to attend meetings of local lodges.

LEAHY LODGE, No. 3, I. O. O. F.
Meets every Monday evening at 7:30 in L. J. O. P. Hall, Fort Street.

HARMONY LODGE, No. 1, K. of P.
Meets every first and third Friday evening at 7:30 in K. of P. Hall, corner Fort and Beretania. Visiting brothers cordially invited to attend.

HONOLULU LODGE 616, B. P. O. E.
Honolulu Lodge No. 616, B. P. O. E. Meets in their hall, on King Street, near Fort, every Friday evening. Visiting brothers are cordially invited to attend.

HONOLULU LODGE 140, F. O. E.
Meets on the 2nd and 4th Wednesday evenings of each month at 7:30 o'clock in K. of P. Hall, corner Beretania and Fort streets.

Wm. M'KINLEY LODGE No. 8, K. of P.
Meets every 2nd and 4th Saturday evening at 7:30 o'clock in K. of P. Hall, cor. Fort and Beretania. Visiting brothers cordially invited to attend.

HAWAIIAN TRIBE, No. 1, I. O. R. M.
Meets every first and third Thursday of each month at Knights of Pythias Hall. Visiting brothers cordially invited to attend.

Rainier Beer
FOR SALE AT ALL BARS
TELEPHONE 1331

Edward Everett Hale
Complete Works.

BROWN & LYON CO., LTD.
Young Bldg.

WING ON CHONG
Mattress and Furniture Makers.

Herald Pure Rye and Bourbon
Thos. F. McTighe & Co.,
101-105 KING ST.
PHONE 140. P. O. BOX 755

OWL
5-CENT CIGAR
M. A. Gunst & Co.
FORT AND KING STREETS.

Piano Tuning
Expert work at moderate prices.
Bergstrom Music Co., Ltd.
Odd Fellows' Bldg.

BLANK BOOKS
All kinds.
A. B. ARLEIGH & CO., LTD.
Hotel St., Opp. Union.



Wealth of hair is wealth indeed, especially to a woman. If your hair falls out, is too thin, or is losing its color, use **Ayer's Hair Vigor**. It will remove all dandruff, and will give you thick, long, glossy, and beautiful hair. Accept no substitute. Be sure you get Ayer's Hair Vigor, and preserve the richness and luxuriance of your hair to an advanced period of life.

Prepared by Dr. J. C. Ayer & Co., Lowell, Mass., U. S. A.

Autos Repaired

Your machine will be ready for you when we say it will be. We don't experiment on autos; we repair them.

Von Hamm - Young Co., Ltd.
ALEXANDER YOUNG BUILDING.
5—Telephone—5

Honolulu Automobile Stand

C. H. Behn
Proprietor and Manager.
Corner Alakea and Hotel Streets.

Tonneau and Rumble Seats

The W. W. WRIGHT CO., Ltd.
King, near South.

AUTOMOBILES

SCHUMAN CARRIAGE CO.
J. W. KERSHNER

Auto Tire Repairing

1177 Alakea St. Phone 434.

AUTOS

INDEPENDENT AUTO STAND
King and Bishop Sts.
Phone 609
ALL THE FITTINGS FOR

Mr. SWAHN

Formerly cutter for H. P. Roth, is now in charge of L. E. KERR & CO.'S TAILORING DEPARTMENT.

CITY MAUSOLEUM

Come and learn particulars at TOWNSEND UNDERTAKING CO.
Beretania St., Opp. Sachs', EUREKA

Wong Wong, CONTRACTOR and BUILDER.

PLUMBING and PAINTING.
Office: Honolulu Painting Co., 221 King St.; P. O. Box 914.

CHARLIE AT THE Orpheum Saloon,

Still on deck. See his curios.

PERFECTION ROOF PAINT

Give it a trial. Guaranteed to prove good. Write for booklet to P. O. Box 93.

THEO. H. DAVIES & CO., AGENTS.

SUITINGS

ENTIRELY NEW PATTERNS IN ENGLISH & AMERICAN CLOTHES.
W. W. AHANA CO.
62 S. King St. No Branches.

LOCAL AND GENERAL

The Big Nickel Scratch Pad for sale at the Bulletin office for five cents, is one inch thick, made up of two hundred sheets of good paper. Six for a quarter.

Call and see Mike Paton at the Encore.

The great clearance sale at Blom's continues this week.

J. Carlo, loan office, has bargains in jewelry and money to loan.

Get your hat cleaned at the Leading Hat Cleaner, 1184 Fort street.

Thomas Pa was a passenger last week from Maui on the Claudine.

The band will play at the departure of the steamer Chiyu Maru today.

Go to the Fashion Saloon when you want a delicious cold drink, made right.

Leahy Chapter, No. 2, O. E. S., will meet in Masonic Temple at 7:30 this evening.

Down at Dick's every Saturday, turkey lunch at 11 o'clock, ref. ediments, Royal Annex Bar. All are invited.

Dr. Schurman, the osteopath, has moved his office from Emma Square to the corner of Beretania and Union streets.

Wah Chong Co. in the Waverley Block on Hotel street, have some very fine suitings and dress goods, just from the Coast.

A. A. Deas, deputy-clerk of the United States Court, is back after spending a vacation on Maui. Mr. Deas was accompanied by his wife.

A new cottage recently built in Kalihi by a Hawaiian, was blown down by the wind last Saturday night. The house was not occupied at the time.

W. L. Castle wrote from New York City that he had seen R. Beverly Kidd, formerly of this city, going over to Jersey City, and that he looked just as young as ever.

Harmony Lodge, No. 3, I. O. O. F., will meet in Odd Fellows' hall at 7:30 this evening. Members of Excelsior Lodge and all visiting Odd Fellows are invited to attend.

New Athletic underwear, B. V. D. goods, new shirts and pajamas, in light weight and pretty colors. A fine lot of new suitings at Yee Chan & Co.'s, King and Bethel street.

Judge Seiden Kingsbury sustained a painful injury to his wrist while attempting to crank his auto last Monday evening while on his way to Lahaina with the Congressional party.

Miss Kate Woodard on Fort street, next to the convent, has a fine line of wash embroidery silks, D. M. C. embroidery cotton and wool. A new line of stamping patterns just received.

In the libel case against the manager and editors of the Hilo Shimpo, Susaki was fined \$400 and costs. S. Kishimi \$350 and costs, and a nol. pro. was entered against T. Ito. An appeal has been noted.

Four Hundred and fifty acres of land in Puna have been sold to the Hawaiian Development Company. The upset price is \$6 per acre, the company paying for only 225 acres, the remainder not being in timber.

Cunningham, a sailor from the flagship Tennessee, was seriously injured yesterday afternoon while riding on the running board of an inbound electric car from Waikiki. Dr. Gate Wood, who was on board the car attended to his injury.

Autos Repaired

Your machine will be ready for you when we say it will be. We don't experiment on autos; we repair them.

Von Hamm - Young Co., Ltd.
ALEXANDER YOUNG BUILDING.
5—Telephone—5

Honolulu Automobile Stand

C. H. Behn
Proprietor and Manager.
Corner Alakea and Hotel Streets.

Tonneau and Rumble Seats

The W. W. WRIGHT CO., Ltd.
King, near South.

AUTOMOBILES

SCHUMAN CARRIAGE CO.
J. W. KERSHNER

Auto Tire Repairing

1177 Alakea St. Phone 434.

AUTOS

INDEPENDENT AUTO STAND
King and Bishop Sts.
Phone 609
ALL THE FITTINGS FOR

Mr. SWAHN

Formerly cutter for H. P. Roth, is now in charge of L. E. KERR & CO.'S TAILORING DEPARTMENT.

CITY MAUSOLEUM

Come and learn particulars at TOWNSEND UNDERTAKING CO.
Beretania St., Opp. Sachs', EUREKA

Wong Wong, CONTRACTOR and BUILDER.

PLUMBING and PAINTING.
Office: Honolulu Painting Co., 221 King St.; P. O. Box 914.

CHARLIE AT THE Orpheum Saloon,

Still on deck. See his curios.

PERFECTION ROOF PAINT

Give it a trial. Guaranteed to prove good. Write for booklet to P. O. Box 93.

THEO. H. DAVIES & CO., AGENTS.

SUITINGS

ENTIRELY NEW PATTERNS IN ENGLISH & AMERICAN CLOTHES.
W. W. AHANA CO.
62 S. King St. No Branches.

Storage

No Dampness. No Bugs.

City Transfer Co.

Jas. H. Love Phone 152

Taft Assures Japan of National Friendship

MINNEAPOLIS, Sept. 19.—President Taft today met and formally welcomed to the country the Japanese commercial delegation now touring America. At a luncheon this afternoon the President assured the delegates of the sincere friendship which America feels for Japan. He then toasted the Emperor.

Atlantic Fleet Ordered To Hudson Fulton Celebration

NEW YORK, September 19.—The Atlantic fleet is bound for this port. The warships from the Netherlands and from Argentina have also been ordered here to take part in the Hudson-Fulton celebration.

PEARY'S SHIPS SAILS FOR NORTH SYDNEY

BATTLE HARBOR, September 19.—The Roosevelt, Captain Peary's polar ship, sailed from here yesterday, bound for North Sydney. It is expected that the ship will arrive at the latter place next Tuesday.

COOK ARRIVES IN NEW YORK

NEW YORK, Sept. 19.—Dr. Cook, the intrepid discoverer of the North Pole, will arrive here tomorrow. An enthusiastic welcome is being prepared for him.

GOVERNOR JOHNSON CRITICAL

ROCHESTER, Minn., Sept. 19.—Governor Johnson has a relapse. His condition tonight was admitted to be very critical.

EARTHQUAKE CAUSES PANIC


GRANADA, Spain, September 19.—Great alarm was caused here yesterday by an earthquake which shook this city. No damage was done.

GEN. FUNSTON FRACTURES SHOULDER

PORT LEAVENWORTH, September 19.—Brigadier-General Frederick Funston stumbled and fell yesterday, fracturing his shoulder.

I DO GENERAL CONTRACTING

Island Transfer. Excavating and Filling.
Draying and Expressing Wood and Coal Phone 588
G. W. McDougall, Prop. Vineyard St., Ewa of Nuuanu Stream



S. E. LUCAS, OPTICIAN.

Masonic Building, cor. Hotel and Alakea.
Anyone in need of first-class spectacles properly fitted call on him.

PASSENGERS DEPARTED

Per P. M. S. S. Mongolia for San Francisco, Sept. 19.—H. A. Baldwin, F. F. Baldwin, Mrs. Baker, Miss Anita Hemenway, Lothrop Withington, Mrs. W. M. Bray, the Congressional party, Mrs. T. J. Smith, Miss A. C. Strayne, P. T. Stone and wife, R. G. Peters and wife, Mrs. F. J. Gillett, Mrs. Geo. Mead, George Mead, Miss Moran, Miss Hardaway, Miss Dewey, M. and Mrs. A. F. Judd, Mrs. H. C. Palmaleo, Mrs. Mack, D. T. Fleming and wife, Miss E. L. Carpenter, Miss E. H. Miles, Mrs. Emma Buchanan, Miss Harriet C. E. Thompson, H. G. Olmstead, Dr. Lawrence, G. S. Duckwitz, J. A. Gilman.

PASSENGERS BOOKED

Per T. K. K. S. S. Chiyu Maru, for the Orient, September 20.—E. S. Aldrich and wife, H. P. Wood and wife, Dr. T. A. Paekley, L. Grace Chas. Bennett, Miss M. Waldron, Misses Howell (2), Miss Uong, Miss Rupert, A. MacKillop, Mrs. S. F. Menage.

PASSENGERS ARRIVED

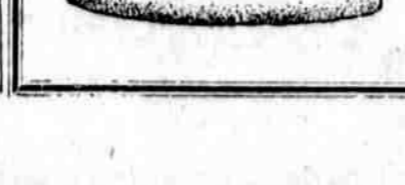
Per T. K. K. S. S. Chiyu Maru, from San Francisco, Sept. 20.—For Honolulu: Mrs. Merlyn G. Cook, C. A. Graham, Dr. L. L. Newbore, Mrs. O. H. Oakley, For Yokohama: W. H. Burt, Geo. R. Chambers, Mrs. Geo. R. Chambers, Miss M. A. Claggett, S. H. Gray, Rev. Daniel C. Greeno, Mrs. Daniel C. Greeno, Miss F. B. Greeno, Mrs. C. S. Griffin, Miss Mary A. Griffin, Geo. Hood, Miss H. Ham, Rev. W. T. Johnson, Mrs. W. T. Johnson, Master Warren Johnson, Master W. McLeod Johnson, Prof. N. Kanal, W. Katene and servant, F. P. Lilley, Mrs. F. P. Lilley, A. H. Mollman, Miss Louise H. Schanuck, R. T. Stevens, Mrs. R. T. Stevens, L. Strassberger, Mrs. L. Strassberger, A. L. White, Mrs. A. L. White, Capt. K. Yabe, T. Yamaguchi, For Kobe: Miss L. L. Bartlett, Miss M. W. Bartlett, Miss Lucille Dooley, Dr. Oskar Eckstein, Mrs. Oskar Eckstein, Miss Lillian A. Weis, For Nagasaki: B. Clark, Mrs. Geo. Mooser and infant, H. J. Such, Mrs. H. J. Such, Miss Frances Such, For Manila: R. F. Bacon, Mrs. R. F. Bacon and infant, Mrs. G. Bates, Wm. C. Carroll, Mrs. N. Compton, W. B. Davenport, L. L. Davis, Rev. Paul Doltz, Mrs. Paul Doltz, Miss H. Doltz, Walter Elliott, Mrs. C. B. Elliott, Miss Ethel Elliott, Master Philip Elliott, A. J. Francis, Mrs. A. J. Francis, Ward B. Gregg, Mrs. Ward B. Gregg, J. W. A. Hansen, A. S. Lanier, Mrs. J. W. A. Hansen, Mrs. E. McPherson, Dr. Albert M. Meade, Mrs. Albert M. Meade, John F. Miller, E. L. Poole, P. A. Prentiss, P. V. Refundio, Miss M. Lola Stewart, Mrs. J. Symington, Miss F. M. Tennent, Wm. Wallace, L. P. Willis, C. E. Workman, Mrs. Pearl B. Young and infant, For Hongkong: Mrs. F. Allen, Mrs. J. Allsworth, L. L. Berk, A. A. Bryan, Mrs. A. A. Bryan, L. Chapman, Mrs. L. Chapman, Miss Dorothy Chapman, Miss Sadie Chapman, M. O. Clark, Miss M. Dean, S. Erlanger, Mrs. S. Erlanger, Mrs. J. K. Hamilton, G. G. Hoppeler, Miss Agnes Kelly, F. S. Loop, Mrs. F. S. Loop, John H. Martin, Jose Mirandes, C. F. Osborne, R. Riddell, Mrs. R. Riddell, M. Sarasin, John V. Terreforte.

PASSENGERS BOOKED

Per T. K. K. S. S. Chiyu Maru, for the Orient, September 20.—E. S. Aldrich and wife, H. P. Wood and wife, Dr. T. A. Paekley, L. Grace Chas. Bennett, Miss M. Waldron, Misses Howell (2), Miss Uong, Miss Rupert, A. MacKillop, Mrs. S. F. Menage.

PASSENGERS ARRIVED

Per T. K. K. S. S. Chiyu Maru, from San Francisco, Sept. 20.—For Honolulu: Mrs. Merlyn G. Cook, C. A. Graham, Dr. L. L. Newbore, Mrs. O. H. Oakley, For Yokohama: W. H. Burt, Geo. R. Chambers, Mrs. Geo. R. Chambers, Miss M. A. Claggett, S. H. Gray, Rev. Daniel C. Greeno, Mrs. Daniel C. Greeno, Miss F. B. Greeno, Mrs. C. S. Griffin, Miss Mary A. Griffin, Geo. Hood, Miss H. Ham, Rev. W. T. Johnson, Mrs. W. T. Johnson, Master Warren Johnson, Master W. McLeod Johnson, Prof. N. Kanal, W. Katene and servant, F. P. Lilley, Mrs. F. P. Lilley, A. H. Mollman, Miss Louise H. Schanuck, R. T. Stevens, Mrs. R. T. Stevens, L. Strassberger, Mrs. L. Strassberger, A. L. White, Mrs. A. L. White, Capt. K. Yabe, T. Yamaguchi, For Kobe: Miss L. L. Bartlett, Miss M. W. Bartlett, Miss Lucille Dooley, Dr. Oskar Eckstein, Mrs. Oskar Eckstein, Miss Lillian A. Weis, For Nagasaki: B. Clark, Mrs. Geo. Mooser and infant, H. J. Such, Mrs. H. J. Such, Miss Frances Such, For Manila: R. F. Bacon, Mrs. R. F. Bacon and infant, Mrs. G. Bates, Wm. C. Carroll, Mrs. N. Compton, W. B. Davenport, L. L. Davis, Rev. Paul Doltz, Mrs. Paul Doltz, Miss H. Doltz, Walter Elliott, Mrs. C. B. Elliott, Miss Ethel Elliott, Master Philip Elliott, A. J. Francis, Mrs. A. J. Francis, Ward B. Gregg, Mrs. Ward B. Gregg, J. W. A. Hansen, A. S. Lanier, Mrs. J. W. A. Hansen, Mrs. E. McPherson, Dr. Albert M. Meade, Mrs. Albert M. Meade, John F. Miller, E. L. Poole, P. A. Prentiss, P. V. Refundio, Miss M. Lola Stewart, Mrs. J. Symington, Miss F. M. Tennent, Wm. Wallace, L. P. Willis, C. E. Workman, Mrs. Pearl B. Young and infant, For Hongkong: Mrs. F. Allen, Mrs. J. Allsworth, L. L. Berk, A. A. Bryan, Mrs. A. A. Bryan, L. Chapman, Mrs. L. Chapman, Miss Dorothy Chapman, Miss Sadie Chapman, M. O. Clark, Miss M. Dean, S. Erlanger, Mrs. S. Erlanger, Mrs. J. K. Hamilton, G. G. Hoppeler, Miss Agnes Kelly, F. S. Loop, Mrs. F. S. Loop, John H. Martin, Jose Mirandes, C. F. Osborne, R. Riddell, Mrs. R. Riddell, M. Sarasin, John V. Terreforte.



Centennial's Best Flour

Makes the Best Bread
Makes the Most Bread

Henry May & Co., Ltd.,

Leading Grocers Phone 22

Shipping

WATERFRONT NOTES

THE STEAMER Kinau, arriving yesterday from Kaula, brought 1224 bags of sugar, 60 bags of rice bran, and 30 bags of taro. Purser Grube reported the following sugar on Kaula ready for shipment: L. P., 1885 bags; H. M., 4680; M. S. Co., 2700; K. S. Co., 2200; K. S. M., 3700; W., 3300.

ARRIVED

Monday, September 20.
T. K. K. S. S. Hongkong Maru, Smith, a. m.

SAILING TODAY

Stmr. Noeau, for Kaula ports, 5 p. m.

DUE TOMORROW

T. K. K. S. S. Chiyu Maru, Greene, from San Francisco, a. m.
T. K. S. S. Hongkong Maru, Smith, for Orient.
Pacific Fleet, for Maiala Bay (Colorado remains).
Stmr. Mauna Loa, from Kona and Kaula ports, a. m.

SAILING TOMORROW

T. K. K. S. S. Chiyu Maru, Greene, or Orient, 9 a. m.
Stmr. Mauna Kea, Freeman, for Hilo and way ports, 12 noon.
Stmr. Mikahala, Tullett, for Molokai and Maui ports, 5 p. m.
Stmr. Kinau, for Kaula ports, 5 p. m.

DUE WEDNESDAY

Stmr. W. G. Hall, from Kaula ports, a. m.

DUE THURSDAY

Stmr. Claudine, from Maui ports, a. m.
T. K. K. S. S. Tenyo Maru, from Yokohama, a. m. (possibly not until Friday a. m.)
S. S. Ptelades, from San Francisco, a. m.

SAIL THURSDAY

T. K. K. S. S. Tenyo Maru, for San Francisco, 5 p. m., possibly.

DUE FRIDAY

O. S. S. Alameda, from San Francisco, a. m.
M. N. S. S. Lurline, from San Francisco, a. m.

DUE SATURDAY

Pacific fleet, from Maiala bay texts and Hilo.
Stmr. Mauna Kea, Freeman, from Hilo and way ports, a. m.

PASSENGERS BOOKED

Per T. K. K. S. S. Chiyu Maru, from San Francisco, Sept. 20.—For Honolulu: Mrs. Merlyn G. Cook, C. A. Graham, Dr. L. L. Newbore, Mrs. O. H. Oakley, For Yokohama: W. H. Burt, Geo. R. Chambers, Mrs. Geo. R. Chambers, Miss M. A. Claggett, S. H. Gray, Rev. Daniel C. Greeno, Mrs. Daniel C. Greeno, Miss F. B. Greeno, Mrs. C. S. Griffin, Miss Mary A. Griffin, Geo. Hood, Miss H. Ham, Rev. W. T. Johnson, Mrs. W. T. Johnson, Master Warren Johnson, Master W. McLeod Johnson, Prof. N. Kanal, W. Katene and servant, F. P. Lilley, Mrs. F. P. Lilley, A. H. Mollman, Miss Louise H. Schanuck, R. T. Stevens, Mrs. R. T. Stevens, L. Strassberger, Mrs. L. Strassberger, A. L. White, Mrs. A. L. White, Capt. K. Yabe, T. Yamaguchi, For Kobe: Miss L. L. Bartlett, Miss M. W. Bartlett, Miss Lucille Dooley, Dr. Oskar Eckstein, Mrs. Oskar Eckstein, Miss Lillian A. Weis, For Nagasaki: B. Clark, Mrs. Geo. Mooser and infant, H. J. Such, Mrs. H. J. Such, Miss Frances Such, For Manila: R. F. Bacon, Mrs. R. F. Bacon and infant, Mrs. G. Bates, Wm. C. Carroll, Mrs. N. Compton, W. B. Davenport, L. L. Davis, Rev. Paul Doltz, Mrs. Paul Doltz, Miss H. Doltz, Walter Elliott, Mrs. C. B. Elliott, Miss Ethel Elliott, Master Philip Elliott, A. J. Francis, Mrs. A. J. Francis, Ward B. Gregg, Mrs. Ward B. Gregg, J. W. A. Hansen, A. S. Lanier, Mrs. J. W. A. Hansen, Mrs. E. McPherson, Dr. Albert M. Meade, Mrs. Albert M. Meade, John F. Miller, E. L. Poole, P. A. Prentiss, P. V. Refundio, Miss M. Lola Stewart, Mrs. J. Symington, Miss F. M. Tennent, Wm. Wallace, L. P. Willis, C. E. Workman, Mrs. Pearl B. Young and infant, For Hongkong: Mrs. F. Allen, Mrs. J. Allsworth, L. L. Berk, A. A. Bryan, Mrs. A. A. Bryan, L. Chapman, Mrs. L. Chapman, Miss Dorothy Chapman, Miss Sadie Chapman, M. O. Clark, Miss M. Dean, S. Erlanger, Mrs. S. Erlanger, Mrs. J. K. Hamilton, G. G. Hoppeler, Miss Agnes Kelly, F. S. Loop, Mrs. F. S. Loop, John H. Martin, Jose Mirandes, C. F. Osborne, R. Riddell, Mrs. R. Riddell, M. Sarasin, John V. Terreforte.

PASSENGERS BOOKED

Per T. K. K. S. S. Chiyu Maru, for the Orient, September 20.—E. S. Aldrich and wife, H. P. Wood and wife, Dr. T. A. Paekley, L. Grace Chas. Bennett, Miss M. Waldron, Misses Howell (2), Miss Uong, Miss Rupert, A. MacKillop, Mrs. S. F. Menage.

PASSENGERS ARRIVED

Per T. K. K. S. S. Chiyu Maru, from San Francisco, Sept. 20.—For Honolulu: Mrs. Merlyn G. Cook, C. A. Graham, Dr. L. L. Newbore, Mrs. O. H. Oakley, For Yokohama: W. H. Burt, Geo. R. Chambers, Mrs. Geo. R. Chambers, Miss M. A. Claggett, S. H. Gray, Rev. Daniel C. Greeno, Mrs. Daniel C. Greeno, Miss F. B. Greeno, Mrs. C. S. Griffin, Miss Mary A. Griffin, Geo. Hood, Miss H. Ham, Rev. W. T. Johnson, Mrs. W. T. Johnson, Master Warren Johnson, Master W. McLeod Johnson, Prof. N. Kanal, W. Katene and servant, F. P. Lilley, Mrs. F. P. Lilley, A. H. Mollman, Miss Louise H. Schanuck, R. T. Stevens, Mrs. R. T. Stevens, L. Strassberger, Mrs. L. Strassberger, A. L. White, Mrs. A. L. White, Capt. K. Yabe, T. Yamaguchi, For Kobe: Miss L. L. Bartlett, Miss M. W. Bartlett, Miss Lucille Dooley, Dr. Oskar Eckstein, Mrs. Oskar Eckstein, Miss Lillian A. Weis, For Nagasaki: B. Clark, Mrs. Geo. Mooser and infant, H. J. Such, Mrs. H. J. Such, Miss Frances Such, For Manila: R. F. Bacon, Mrs. R. F. Bacon and infant, Mrs. G. Bates, Wm. C. Carroll, Mrs. N. Compton, W. B. Davenport, L. L. Davis, Rev. Paul Doltz, Mrs. Paul Doltz, Miss H. Doltz, Walter Elliott, Mrs. C. B. Elliott, Miss Ethel Elliott, Master Philip Elliott, A. J. Francis, Mrs. A. J. Francis, Ward B. Gregg, Mrs. Ward B. Gregg, J. W. A. Hansen, A. S. Lanier, Mrs. J. W. A. Hansen, Mrs. E. McPherson, Dr. Albert M. Meade, Mrs. Albert M. Meade, John F. Miller, E. L. Poole, P. A. Prentiss, P. V. Refundio, Miss M. Lola Stewart, Mrs. J. Symington, Miss F. M. Tennent, Wm. Wallace, L. P. Willis, C. E. Workman, Mrs. Pearl B. Young and infant, For Hongkong: Mrs. F. Allen, Mrs. J. Allsworth, L. L. Berk, A. A. Bryan, Mrs. A. A. Bryan, L. Chapman, Mrs. L. Chapman, Miss Dorothy Chapman, Miss Sadie Chapman, M. O. Clark, Miss M. Dean, S. Erlanger, Mrs. S. Erlanger, Mrs. J. K. Hamilton, G. G. Hoppeler, Miss Agnes Kelly, F. S. Loop, Mrs. F. S. Loop, John H. Martin, Jose Mirandes, C. F. Osborne, R. Riddell, Mrs. R. Riddell, M. Sarasin, John V. Terreforte.

PASSENGERS BOOKED

Per T. K. K. S. S. Chiyu Maru, for the Orient, September 20.—E. S. Aldrich and wife, H. P. Wood and wife, Dr. T. A. Paekley, L. Grace Chas. Bennett, Miss M. Waldron, Misses Howell (2), Miss Uong, Miss Rupert, A. MacKillop, Mrs. S. F. Menage.

PASSENGERS ARRIVED

Per T. K. K. S. S. Chiyu Maru, from San Francisco, Sept. 20.—For Honolulu: Mrs. Merlyn G. Cook, C. A. Graham, Dr. L. L. Newbore, Mrs. O. H. Oakley, For Yokohama: W. H. Burt, Geo. R. Chambers, Mrs. Geo. R. Chambers, Miss M. A. Claggett, S. H. Gray, Rev. Daniel C. Greeno, Mrs. Daniel C. Greeno, Miss F. B. Greeno, Mrs. C. S. Griffin, Miss Mary A. Griffin, Geo. Hood, Miss H. Ham, Rev. W. T. Johnson, Mrs. W. T. Johnson, Master Warren Johnson, Master W. McLeod Johnson, Prof. N. Kanal, W. Katene and servant, F. P. Lilley, Mrs. F. P. Lilley, A. H. Mollman, Miss Louise H. Schanuck, R. T. Stevens, Mrs. R. T. Stevens, L. Strassberger, Mrs. L. Strassberger, A. L. White, Mrs. A. L. White, Capt. K. Yabe, T. Yamaguchi, For Kobe: Miss L. L. Bartlett, Miss M. W. Bartlett, Miss Lucille Dooley, Dr. Oskar Eckstein, Mrs. Oskar Eckstein, Miss Lillian A. Weis, For Nagasaki: B. Clark, Mrs. Geo. Mooser and infant, H. J. Such, Mrs. H. J. Such, Miss Frances Such, For Manila: R. F. Bacon, Mrs. R. F. Bacon and infant, Mrs. G. Bates, Wm. C. Carroll, Mrs. N. Compton, W. B. Davenport, L. L. Davis, Rev. Paul Doltz, Mrs. Paul Doltz, Miss H. Doltz, Walter Elliott, Mrs. C. B. Elliott, Miss Ethel Elliott, Master Philip Elliott, A. J. Francis, Mrs. A. J. Francis, Ward B. Gregg, Mrs. Ward B. Gregg, J. W. A. Hansen, A. S. Lanier, Mrs. J. W. A. Hansen, Mrs. E. McPherson, Dr. Albert M. Meade, Mrs. Albert M. Meade, John F. Miller, E. L. Poole, P. A. Prentiss, P. V. Refundio, Miss M. Lola Stewart, Mrs. J. Symington, Miss F. M. Tennent, Wm. Wallace, L. P. Willis, C. E. Workman, Mrs. Pearl B. Young and infant, For Hongkong: Mrs. F. Allen, Mrs. J. Allsworth, L. L. Berk, A. A. Bryan, Mrs. A. A. Bryan, L. Chapman, Mrs. L. Chapman, Miss Dorothy Chapman, Miss Sadie Chapman, M. O. Clark, Miss M. Dean, S. Erlanger, Mrs. S. Erlanger, Mrs. J. K. Hamilton, G. G. Hoppeler, Miss Agnes Kelly, F. S. Loop, Mrs. F. S. Loop, John H. Martin, Jose Mirandes, C. F. Osborne, R. Riddell, Mrs. R. Riddell, M. Sarasin, John V. Terreforte.

PASSENGERS BOOKED

Per T. K. K. S. S. Chiyu Maru, for the Orient, September 20.—E. S. Aldrich and wife, H. P. Wood and wife, Dr. T. A. Paekley, L. Grace Chas. Bennett, Miss M. Waldron, Misses Howell (2), Miss Uong, Miss Rupert, A. MacKillop, Mrs. S. F. Menage.

PASSENGERS ARRIVED

Per T. K. K. S. S. Chiyu Maru, from San Francisco, Sept. 20.—For Honolulu: Mrs. Merlyn G. Cook, C. A. Graham, Dr. L. L. Newbore, Mrs. O. H. Oakley, For Yokohama: W. H. Burt, Geo. R. Chambers, Mrs. Geo. R. Chambers, Miss M. A. Claggett, S. H. Gray, Rev. Daniel C. Greeno, Mrs. Daniel C. Greeno, Miss F. B. Greeno, Mrs. C. S. Griffin, Miss Mary A. Griffin, Geo. Hood, Miss H. Ham, Rev. W. T. Johnson, Mrs. W. T. Johnson, Master Warren Johnson, Master W. McLeod Johnson, Prof. N. Kanal, W. Katene and servant, F. P. Lilley, Mrs. F. P. Lilley, A. H. Mollman, Miss Louise H. Schanuck, R. T. Stevens, Mrs. R. T. Stevens, L. Strassberger, Mrs. L. Strassberger, A. L. White, Mrs. A. L. White, Capt. K. Yabe, T. Yamaguchi, For Kobe: Miss L. L. Bartlett, Miss M. W. Bartlett, Miss Lucille Dooley, Dr. Oskar Eckstein, Mrs. Oskar Eckstein, Miss Lillian A. Weis, For Nagasaki: B. Clark, Mrs. Geo. Mooser and infant, H. J. Such, Mrs. H. J. Such, Miss Frances Such, For Manila: R. F. Bacon, Mrs. R. F. Bacon and infant, Mrs. G. Bates, Wm. C. Carroll, Mrs. N. Compton, W. B. Davenport, L. L. Davis, Rev. Paul Doltz, Mrs. Paul Doltz, Miss H. Doltz, Walter Elliott, Mrs. C. B. Elliott, Miss Ethel Elliott, Master Philip Elliott, A. J. Francis, Mrs. A. J. Francis, Ward B. Gregg, Mrs. Ward B. Gregg, J. W. A. Hansen, A. S. Lanier, Mrs. J. W. A. Hansen, Mrs. E. McPherson, Dr. Albert M. Meade, Mrs. Albert M. Meade, John F. Miller, E. L. Poole, P. A. Prentiss, P. V. Refundio, Miss M. Lola Stewart, Mrs. J. Symington, Miss F. M. Tennent, Wm. Wallace, L. P. Willis, C. E. Workman, Mrs. Pearl B. Young and infant, For Hongkong: Mrs. F. Allen, Mrs. J. Allsworth, L. L. Berk, A. A. Bryan, Mrs. A. A. Bryan, L. Chapman, Mrs. L. Chapman, Miss Dorothy Chapman, Miss Sadie Chapman, M. O. Clark, Miss M. Dean, S. Erlanger, Mrs. S. Erlanger, Mrs. J. K. Hamilton, G. G. Hoppeler, Miss Agnes Kelly, F. S. Loop, Mrs. F. S. Loop, John H. Martin, Jose Mirandes, C. F. Osborne, R. Riddell, Mrs. R. Riddell, M. Sarasin, John V. Terreforte.

PASSENGERS BOOKED

Per T. K. K. S. S. Chiyu Maru, for the Orient, September 20.—E. S. Aldrich and wife, H. P. Wood and wife, Dr. T. A. Paekley, L. Grace Chas. Bennett, Miss M. Waldron, Misses Howell (2), Miss Uong, Miss Rupert, A. MacKillop, Mrs. S. F. Menage.

PASSENGERS ARRIVED

Per T. K. K. S. S. Chiyu Maru, from San Francisco, Sept. 20.—For Honolulu: Mrs. Merlyn G. Cook, C. A. Graham, Dr. L. L. Newbore, Mrs. O. H. Oakley, For Yokohama: W. H. Burt, Geo. R. Chambers, Mrs. Geo. R. Chambers

Many Interesting Shopping Items

Specials for Monday, Tuesday and Wednesday

White Mercerized Shirtings and Waistings

25c quality 18c a yd.
30c quality 22c a yd.
35c quality 27c a yd.

White Fancy Pique

Regular Price 30c a yd. Special Price 20c a yd.

Oxford Suitings

White, Regular Price 35c a yd. Special 25c a yd.
White, Regular Price 40c a yd. Special 30c a yd.

TRIMMING DEPARTMENT

New Allover Laces, New Allover Embroideries, Heavy Band Laces, Cluny Laces, Baby Irish Laces, Pearl and Silver Bands, Persian Bands, White and Gold Bands, Silver Spangle, very beautiful for evening gowns.

We also have some very pretty new ideas in the double width nets for gowns and waists.

LADIES' HAND CROCHETED DUTCH COLLARS

Very choice, only one of a kind.

CHILDREN'S SCHOOL UMBRELLAS

Paragon frames and steel rods, very strong, 75c and upwards.

LADIES' WHITE WASHABLE CHAMOIS GLOVES

All Sizes.

LADIES' AUTO GLOVES

With very deep cuff. Good weight, but not clumsy.

LADIES' BLACK LACE SCARFS

Just the thing for throwing over the head in the evening.

N. S. Sachs Dry Goods Co., Ltd.
Corner Fort and Beretania Sts.

NEW MOULDINGS and PICTURES
Just received per "Alameda" at

Gurrey's

Attention!

Officers and Men of the Pacific Fleet

A beautiful private touring car has been placed at your disposal while here. Special rates for around the country tours have been fixed, including all the scenes of interest. An experienced chauffeur will give you several hours of the greatest pleasure you have ever experienced in sight seeing, at a surprisingly low price. The car when not in service will be found standing in front of the U. S. Naval Station marked "Fleet Car." You have only to phone 371 to arrange for special parties.



School Books and Supplies

A big stock of SCHOOL BOOKS, COMPOSITION BOOKS, PENCIL TABLETS, INKS, RUBBER ERASERS, SCHOOL BAGS, etc. SCHOOL BOOKS AT LIST PRICE.

Wall, Nichols Co., Ltd.

Remember the Place.

Is Your Home Up-To-Date?

The Johnson Floor Finishes are necessary in beautifying the modern home. We carry a complete line of these goods, including Johnson's Prepared Wax, Johnson's Wood Dyes, Johnson's Floor Finishes, Johnson's Restorer, etc.

Fine booklet, "The Proper Treatment of Floors, Woodwork and Furniture," free for the asking.

Lewers & Cooke, LIMITED
177 S. King St.

KeeLox Carbon Has No Equal

We know that Kee Lox will give more satisfaction than any other typewriter carbon made. We do not hesitate to guarantee it. It is strictly non-smudge and it wears longest.

Hawaiian News Co., Ltd.
Alexander Young Bldg.

Haleiwa

AFFORDS MORE SATISFACTORY PLEASURE than any location in the islands. Golf, Swimming, Riding, Motoring.

LIVERY

Saddle and driving horses for hire.

CLUB STABLES

1128 Fort St. Tel. 109.

ASSOCIATED GARAGE, Ltd.

Agents for the Kissel Kar and Chalmers-Detroit. First-Class Repairing. Merchant St.

YOUR BACKACHE WILL YIELD

To Lydia E. Pinkham's Vegetable Compound

Rockland, Maine.—"I was troubled for a long time with pains in my back and side, and was miserable in every way. I doctored until I was discouraged, and thought I should never get well. I read a testimonial about Lydia E. Pinkham's Vegetable Compound, and thought I would try it. After taking three bottles I was cured, and never felt so well in all my life. I recommend Lydia E. Pinkham's Vegetable Compound to all my friends."—Mrs. WILLY YOUNG, 6 Columbia Avenue, Rockland, Me.

Backache is a symptom of female weakness or derangement. If you have backache, don't neglect it. To get permanent relief you must reach the root of the trouble. Nothing we know of will do this so safely and surely as Lydia E. Pinkham's Vegetable Compound. Cure the cause of these distressing aches and pains and you will become well and strong. The great volume of unsolicited testimony constantly pouring in proves conclusively that Lydia E. Pinkham's Vegetable Compound, made from roots and herbs, has restored health to thousands of women. Mrs. Pinkham, of Lynn, Mass., invites all sick women to write her for advice. She has guided thousands to health free of charge.

HEALANI-MYRTLE DANCE A SUCCESS

At the Moana hotel on Saturday night the Myrtle-Healani dance was carried out to a most successful issue. All the members and their friends were present and the music and floor being perfect, a most enjoyable time was had by all.

The two boat club colors were everywhere in evidence, and very proudly the victorious Myrtles flaunted theirs. The men who rowed to victory during the afternoon were congratulated time and time again, and everybody was in such good humor that a stranger would have thought that the dance was a one-club affair. The whole days was a great success, and many were the hopes expressed that the clubs would make the dance a half-yearly function instead of an annual one. The dancing was carried on till a late hour, and when the time came for the festive throng to break up, the regrets were many, and many a charming girl begged of the management for "just one more two-step."

Mayor Sweeney of El Paso, Tex., has gone to invite President Diaz of Mexico to the American city to greet President Taft Oct. 16 and artisans are preparing the Mexican city of Juarez for the visit of Mr. Taft.

SEAMAN LESSLEY IN PRISON GARB

Evidently wishing to inspect the District of Iwilei in his new uniform, G. B. Lessley, a seaman on the U. S. S. Washington, yesterday visited the stable back of Oahu Prison, and seeing a prison garb hung on the wall, picked it up and attired himself in it and walked out of the stable again unnoticed. His navy uniform he carefully covered with the new one, which he wore on top of it. Lessley, who, it is alleged, was under the influence of liquor, then turned toward town, marching through the streets in a loose way. No sooner had he turned the Iwilei road on to King street than he was observed by the fleet police and brought to the station house. From there he will be sent to the ship, where he will be court-martialed. B. Joyce, a deserter from the U. S. S. Pennsylvania, was arrested by Chief Leal last night. He is charged with having burglarized the store of Abraham Fernandez, from where he stole a few revolvers.

ST. LOUIS NINE CHALLENGE OAHU

This afternoon the management of the St. Louis baseball nine decided to challenge a picked team from the Oahu League to a game to decide which league is the strongest. The following challenge speaks for itself:

The Manager of the Oahu Baseball League, Honolulu.

Dear Sir: There being a question in the minds of some as to the class of ball played by the teams of the Oahu Baseball League and the Honolulu Baseball League, the undersigned hereby challenge any team or combination of teams of the Oahu Baseball League to play a series of two out of three games, either at the League grounds or the grounds of the Oahu League, for gate receipts or any other consideration named. An early reply is requested. St. Louis Alumni Baseball Team, by its Captain,

J. A. WILLIAMS. Such a game as suggested should draw a huge crowd of spectators, and would settle a much vexed question that is at present worrying a lot of baseball fans.

Wednesday afternoon, at half after four, the Women's Rivers and Harbors Congress invites all members and the general public to hear Mr. Ralph Hosmer and Mr. W. C. Mendenhall discuss the most recent phases of the conservation question, especially where it touches our own Territory. The Commercial Club has kindly opened its doors for the meeting, its central location as well as the late hour making possible an increased attendance.

The case of Frank K. Archer vs. S. Naka et al. has been set for argument for tomorrow morning in the Supreme Court.

AMUSEMENTS

Hawaiian Opera House

SPECIAL ENGAGEMENT

COMMENCING MONDAY EVENING, SEPT. 13

Actophone Photographs

LIVING, SPEAKING, SINGING, MUSICAL SEATS ON SALE

AT BERGSTROM MUSIC CO.

PRICES 25c, 15c and 10c.

FALK REPLIES TO "COLD FEET" CHARGE

"There is no truth in the suggestion made in the morning paper that the management of the Big League Baseball got cold feet on Saturday when they called the game against the California team at the end of the seventh innings." Thus said Charlie Falk to a bunch of sports at noon today. "As a matter of fact, I wanted the game called at the end of the fifth inning, as it was getting late and there was a big game to be played."

"Anyone who was down on the benches knows what I said about ending the game at the fifth inning, and anyone could see that the Kams were not taking the game very seriously." Mr. Falk's statement that the game was supposed to end at the fifth, owing to the late start, is a fact, as he was heard to say so when that inning started.

AFONG ESTATE

The third and final accounts of the Chun Afong estate were before Judge Robinson this morning, many of those interested in the estate being present in court. Attorneys Magoo and Humphreys represented the interest of their wives, daughters of Afong. It has been agreed that the \$46,000 balance now remaining in the hands of the Bishop Trust Company be paid into court, an agreement of distribution to be reached later.

STANDING OF THE CLUBS.

	National League.		
	W.	L.	Pct.
Pittsburg	94	37	.718
Chicago	90	42	.682
New York	77	51	.601
Cincinnati	66	64	.508
Philadelphia	64	69	.481
St. Louis	48	82	.369
Brooklyn	46	84	.354
Boston	37	93	.285
American League.			
	W.	L.	Pct.
Detroit	88	46	.657
Philadelphia	82	50	.621
Boston	78	56	.582
Cleveland	68	68	.500
Chicago	67	67	.500
New York	60	71	.459
St. Louis	56	77	.421
Washington	34	98	.258

There was a fine surf at Waikiki yesterday afternoon, and a big crowd of bathers turned out to enjoy a swim.

Encourage beer-drinking and you promote "temperance."

Strange as it may seem to some people, this is true. In the past fifty years the cause of temperance has flourished as evinced by general statistics. These same statistics show a great decrease in the sale of distilled liquors and a corresponding increase in the sale of beer. Seven people are drinking it today where only one person drank it fifty years ago. This goes to prove that beer is a good normal stimulant---not an intoxicant. And the best beer, the finest tonic, is



QUALITY, COMFORT AND STYLE.

All three features in Regal Shoes. The wearing quality can not be compared to other makes. A new Tobacco, Black King Calf, Blucher lace, swing last with perforated toe and Military heel.

Talk of comfort! Come, try on a pair. We Maintain Best and Quickest Shoe Repair Shop in Town.

\$3.50 & \$4.00.

Regal Shoe Store, - cor. King and Bethel

GEO. A. MARTIN,
FASHIONABLE TAILOR.
Business Suits for \$25.
Hotel St.

WAH CHONG CO.
DRY GOODS AND TAILORING.
Everything absolutely new and fresh from the Coast.
WAVERLEY BLK. - HOTEL ST.

BLOM'S

CLEARANCE SALE CONTINUES THIS WEEK.
GREAT REDUCTIONS IN PRICE.

David A. Dowsett,
INSURANCE, REAL ESTATE, LOANS.
203 Judd Building. Phone 855.

Tom Sharp the Painter

HIGH-CLASS PAPER-HANGING, DECORATING, AND GENERAL PAINTING.

SHARP SIGNS

SPEAK FOR THEMSELVES.

ELITE BUILDING. PHONE 397.

Encourage beer-drinking and you promote "temperance."

Strange as it may seem to some people, this is true. In the past fifty years the cause of temperance has flourished as evinced by general statistics. These same statistics show a great decrease in the sale of distilled liquors and a corresponding increase in the sale of beer. Seven people are drinking it today where only one person drank it fifty years ago. This goes to prove that beer is a good normal stimulant---not an intoxicant. And the best beer, the finest tonic, is

FOR RENT
\$15.00—3 bed-room house on Gullick ave., near car line.
\$12.00—2 bed-room house, partly furnished, at Manoa Valley, short distance from car.

P. E. R. Strauch
Waity Bldg. 74 S. King St.

IT TASTES CLEAN BECAUSE IT IS CLEAN
Pond Dairy Milk
Is pleasant and wholesome. "There's a difference." The Baby notices it instantly.
THE POND DAIRY.
Tel. 890.

EVENING BULLETIN

DAILY and WEEKLY Published by BULLETIN PUBLISHING CO., LTD.
At 180 King Street, Honolulu, Territory of Hawaii.

Daily every day except Sunday. Weekly issued on Tuesday of each week.

MEMBER OF THE ASSOCIATED PRESS.

Wallace R. Farrington, Editor

SUBSCRIPTION RATES PAYABLE IN ADVANCE.

EVENING BULLETIN		WEEKLY BULLETIN	
Per Month, anywhere in U.S.	\$.75	Per Six Months, anywhere in U.S.	\$ 4.00
Per Quarter, anywhere in U.S.	2.00	Per Year, anywhere in U.S.	11.00
Per Year, anywhere in U.S.	12.00	Per Year, anywhere in Canada.	13.00
Per Year, postpaid, foreign.	13.00	Per Year postpaid, foreign.	23.00

CIRCULATION LARGEST OF ANY NEWSPAPER PUBLISHED in the Territory of Hawaii.

Tel. Editorial Rooms, 185
Business Office, 258

Entered at the Postoffice at Honolulu as second-class matter.

MONDAY SEPTEMBER 10, 1909

You should have better means of communication with the mainland, and you are going to obtain it not by the suspension of the coastwise shipping laws, but by the development of a merchant marine which will carry our mail, our passengers, our commerce, and last but not least, our flag; teaching an advanced civilization and a broader and more enlightened humanitarianism, wherever that flag may be seen. You are going to get this merchant marine, which will be in the shape of a mail subsidy, because the President of the United States, the broad-minded, patriotic William Howard Taft, has said so; the Speaker of the House, the Hon. Joseph G. Cannon, is in favor of it; the party in power has been entrusted with the duty of legislating in favor of it, and above all things, the American people demand it; and the will of the American people is always supreme, as soon as their will is known. — Congressman Barchfeld.

It's pleasant to see the Stock Exchange showing new signs of life. The investors would be dead indeed should they fail to respond to the present situation.

"Honolulu will be a great city." This prediction is heard from every expert visiting the city. How long must the people be told this before they will tackle their Big future in Big style?

Philadelphia and Detroit are making such a close finish in the baseball series that the President finds himself not the first to attract attention when the average citizen takes up his evening paper.

The man who says that Honolulu will have a population of 200,000 people within the next ten years is one who judges a sure thing in a most conservative manner. There can be no other result.

Phew! If the Congressmen called it strenuous what are we to say of the local people who kept both Congressmen, Commissioners and the fleet going? But we're mighty glad they came, just the same.

President Taft has so frequently declared America's friendship for Japan that even the ignorant Japanese should begin to realize that it is indeed true, and therefore refrain from any acts that might lead to the withdrawal of any measure of that kindly feeling.

If the American ship owners do not step to the front and take care of the increasing trade between this port and the mainland they will deserve all they get from foreigners. The steamship operators have now at their disposal the greatest of all subsidies—New Business.

Mr. Leighton's proposal that the waters of "the other side" of the island should be brought into use for this side is one that has long been advocated by far-seeing business men of Honolulu. It usually needs a declaration from an outsider to make Honolulu seriously take notice.

All Honolulu joins in cheers for the strikebreakers. They have done good work, and the money they have put in circulation has brought more comfort and more happiness to more homes than all the dividends reported on the Stock Exchange. Moral—Employ available citizen labor and everyone will prosper.

San Francisco Shriners are to charter a special steamer for their trip to Honolulu. Since there are more unattached tourists than Shriners anxious to come this way the coming winter, why don't some of the steamship lines that carry the freight charter an additional steamship to handle the passengers?

Three hundred years ago today Henry Hudson arrived at the navigable headwaters of the Hudson river. That's why they are celebrating in New York. But Honolulu people will not need to wait three hundred years before they celebrate a devel-

opment as remarkable as that which has taken place along the Hudson.

Both the Matson Navigation Co. and the American-Hawaiian Steamship Companies have chartered a special steamer to take care of the freight between Hawaii and the mainland during the past season. Now that passengers are demanding accommodations, is there any good reason why one or both of these lines should not charter a special steamer to relieve the congestion of people?

Mr. Leighton says it would be well if public policy could be "definitely enunciated, fixed and popularly approved." It would appear from this that Mr. Leighton has been here long enough to learn that one of the most difficult things for the people to obtain from the executive of Hawaii is a public policy so "definitely enunciated" that anyone can depend on it for a week. There is always the hedging qualification. And we have also to remember that no one yet knows the "policy" under which the valuable public lands of Kapaa are being handled.

ANOTHER STEAMER NEEDED.

Managers of the Matson Navigation Company will show their good faith and their determination to meet the demands of the increasing business between this port and the Pacific Coast if they signalize the successful launching of their first passenger vessel by duplicating the order for another, as large at least, and possibly larger.

It is absolutely necessary for some one of the transportation companies to step forward and prove that it means to reciprocate, and the Matson line appears to be the only one in these times that, while having the freight business to sustain good ships, can be depended upon to recognize the increasing passenger traffic.

As a matter of fact, it will be to the everlasting credit of the American transportation managers if one or more of the operators will step to the front and charter one of the coast steamers for special service this winter in order that the additional tourist business that is now offering may be accommodated.

Aside from the immediate demand, it is clear that the increasing traffic will not only keep the steamer *Wilhelmina* well filled as soon as she is put on the route, but an additional passenger and freight steamer will be needed as soon as it can be constructed. Seattle trade has to be considered.

It is therefore merely a question of whether the line in which the largest amount of local capital and local enterprise is enlisted will shoulder the responsibility and accept the opportunity that is presented.

Here is a field for profitable investment that solves our transportation problem in the right way. The business is offering. The freights are already in evidence. Passengers must be accommodated. The ways, the means, the material things on which a great transportation line is built up are right here, now. Absolute protection is given through the coastwise shipping laws, and it is up to the Americans in the transportation business to make good.

Traffic between this port and San Francisco, Seattle and probably Los Angeles will grow by leaps and bounds. We have been predicting it for months, while the pessimists have knocked and asked for foreign ships.

The traffic of this summer, both in freight and passengers, has proved the optimist to have been more than correct in his view. The summer business between Hawaii and the mainland has been equal to that of any previous winter. This means that the winter will be the greatest this Territory has ever known. Best of all, the growth will continue.

A word to the wise American steamship operators should be sufficient. The money and the business are available; what more do they want?

Houses for Rent

Fort St.	2 B. R.	\$ 8.00
Kaimuki	1 B. R.	12.00
709 Kinau St.	2 B. R.	17.00
Union & Garden Lane	3 B. R.	18.00
Pawas & Young St.	4 B. R.	25.00
Elm and Birch Sts.	3 B. R.	25.00
Kinau and Alapai Sts.	3 B. R.	26.25
Waiialea Road	2 B. R.	30.00
1111 Kinau St.	3 B. R.	32.50
1945 Lunalilo St.	3 B. R.	32.50
795 Kinau St.	3 B. R.	32.50
Manoa Valley	3 B. R.	35.00
110 Bates St.	2 B. R.	35.00
Elsie ave & Young St.	4 B. R.	40.00
1286 Beretania St.	5 B. R.	40.00

FURNISHED.

Waikiki (on beach)	2 B. R.	\$30.00
Waikiki (on beach)	2 B. R.	35.00
Magazine & Spencer	2 B. R.	35.00
Elsie Av. & Young St.	3 B. R.	40.00
Kaimuki	3 B. R.	45.00
Makiki St.	3 B. R.	50.00
1257 Kinau St.	3 B. R.	55.00
1475 Thurston	4 B. R.	60.00
2039 Nuuanu St.	5 B. R.	100.00

Trent Trust Co., Ltd.

CHIYO MARU ARRIVES EARLY

Two Vessels of Oriental Company Off Port Together

Two of the fleet of the Toyo Kisen Kaisha were off port this morning, the *Chiyo Maru* and *Hongkong Maru*, the former docking at the Hackfield wharf at 8:30. The new arrangements made by the Pacific Mail whereby all its boats remain in Honolulu for 24 hours has been duplicated by the Oriental line, and the *Chiyo* will not leave until tomorrow at 9 a. m.

The *Chiyo* carried 368 sacks of mail, the accumulation of six days, and is taking 110 first-class passengers through. There are 39 second class and 122 steerage passengers on board.

The trip over is reported to have been uneventful.

Captain Yabe, harbor master at Yokohama, is returning on her, after having made the trip to the coast on her last voyage down.

Mr. and Mrs. H. P. Wood will leave on her to commence their Oriental itinerary at Yokohama, and the plans that they have laid out will be closely adhered to with the exception that the trip to New Zealand will probably be left out. They will remain about four months, but the exact time depends on their steamer connections in Australia.

The *Hongkong Maru*, returning from her South American trip, did not enter the port, as the *Chiyo*, a faster boat, will take the mail west, and the other has no freight for Honolulu. She left Valparaiso on Aug. 11, and Manzanillo, the last previous to this, on the 10th inst. Capt. Smith, her skipper, is under a \$500 bond to appear before the United States Commissioner to answer to a charge of allowing three Chinamen

NAVY MEN

will please note that

The Best Cafe

is THE ALEXANDER YOUNG Hotel Street corner of the Young Hotel Building.

Open From 6 a.m. to 11.30 p.m.

Wireless

Use it in YOUR BUSINESS.

to escape while last here. On his last trip through he had 618 Oriental to take care of.

LEIGHTON URGES A DEFINITE LAND POLICY.

(Continued from Page 1)
that the proposal of Mr. Campbell met with the full approval of the director of the geological survey and that he was detailed to make an examination of the islands as to the measurement and conservation of service waters.

Mr. Leighton continues: "The character of surface run off in the Territory of Hawaii differs in many important respects from that on the mainland."
"In the following paragraphs there will be discussed problems of water supply that appear to be of the greatest importance within the Territory and which therefore should receive preference in establishing the work. These expressions are based on the general principle that lands in Government ownership, and especially those with great undeveloped water supply possibilities, should receive consideration before lands in private

Waterhouse Trust

REAL ESTATE

FOR SALE

For sale in College Hills—A very desirable home, located near the car line, on high ground, commanding a splendid view of Manoa Valley. Size of lot 100x150. House consists of living room, dining room, breakfast room, two bedrooms, kitchen, bath, servants' quarters, etc. Newly painted inside and out and modern in every particular. Price \$4-500.00, cash or easy payments.

FOR RENT

Furnished cottages at Punahou, Beretania St. and Waikiki Beach. Unfurnished homes in all sections of the city.

Waterhouse Trust

Cor. Fort and Merchant Streets.

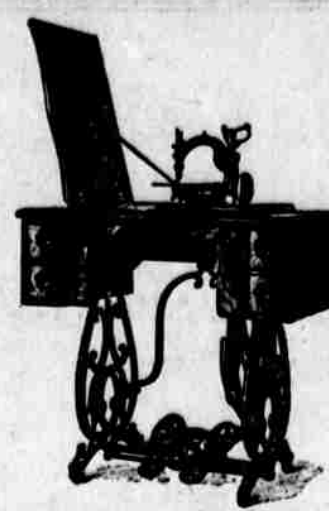
CUT GLASS

Just arrived, a fine new stock of the famous

Hawkes Cut Glass

among which are many new patterns of this years' creation. Your inspection is invited.

H. F. Wichman & Co., Ltd.,
Leading Jewelers.



Only \$50

Automatic Sewing Machine, single thread, lock stitch, drop head.

The biggest value ever offered.

Theo. H. Davies & Co., Ltd.,
Hardware Department.

Great Bargains In Iron Beds

Let us show you 250 kinds of iron beds at specially reduced prices during the next few days

J. Hopp & Co.,
King Street, near Alakea

In advance of the actual need thereof."

Precipitation. "The precipitation records maintained within the Territory, while extremely useful in studying the rainfall in certain low-lying parts are practically without value in determining specifically the contributions that the several valleys receive from the clouds. Records in crucial points, and these are, as a rule, in the mountains and along the high slopes, are conspicuously absent. The data that the Weather Bureau has so far been able to collect are hardly sufficient for an intelligent generalization. This is due to the fact that the places that receive the greatest rainfall and the areas that are most important as collectors of water supply are usually uninhabited. It is therefore impossible to secure attendance upon rain gauges without greater expense than the Weather Bureau has been able to sustain.

"Inasmuch as all water supply is derived from precipitation, the measurement of rainfall throughout the Territory is a recognized necessity. It shall therefore be the duty of all engineers in the employ of the Water Resources branch to cooperate fully with the United States Weather Bureau and with voluntary observers in such measurements, to study the needs for the establishment of rain gauges at critical points and to fully report thereon; also, to encourage either through the Engineer in Charge or by direct representation to parties favorably situated, the establishment of such gauges. It shall further be considered a legitimate expenditure of the appropriation for Water Resources investigation to establish and maintain rain gauges at points at which no other agency can be induced to maintain the same and which are of critical importance in any investigation that is being prosecuted. The gauges so established should be set over a suitable reservoir of metal or

concrete, so that the precipitation caught by the gauge may be stored within and measured at any time. This will obviate the necessity for daily attendance upon the instrument and no loss of actual rainfall record will be sustained if the measurement is made only once each month or each quarter. The important point in the present studies is not so much the daily distribution of rainfall but rather the total rainfall in each drainage basin and its seasonal distribution. Under such an arrangement, gauges can be installed at high points, difficult of access, and operated with satisfaction."

HAWAII OFFICIALS SEE COMMISSION.

Governor Frear with Senator Dillingham, Professor Miller and Secretary Wheeler of the Immigration Commission, spent fully two hours on Saturday afternoon, September 11, at the office of Land Agent George Williams, Hilo, discussing land matters and giving an opportunity to those who so desired to meet the commission. Representative Alfonso, T. J. Ryan, Carl Smith and W. O. Aiken of Maui were there at different times. Ryan presented his arguments on land matter conditions and immigration. Mr. Aiken discussed the homesteading colonies on Maui among the Chinese, Japanese and Portuguese, his preference being rather for the Chinese as getting better results besides intermarrying with the Hawaiians. As instances of success among the Japanese, Carl Smith spoke of his former clerk, a graduate of the High School, who is now at Stanford University, also of the boy's sister who is stenographer in the attorney's office.

Representative Alfonso said that at one time, he favored the application of the general land laws of the United States to Hawaii but had since changed his mind and wanted the Hawaiian Legislature to be in control of the local situation.

Agent Williams made the suggestion that ten per cent of the customs revenue collected in the Territory be used for the establishment of experimental stations at points other than Honolulu. The climate and soil were entirely different on this island and no attention was paid to the troubles and difficulties of those who were engaged in agriculture here. As proof of a good result in one instance where the experimental station had divided its attention here, he mentioned the success with tobacco in Hamakua and Kona. —Tawai Herald.

Those 'Arnold' Goods

The Arnold Knit Diaper is elastic, yielding, very absorbent and washes easily. It fits snugly at the waist and is large and roomy at the seat.

Sizes 18, 20, 22 and 24 inches.

Price \$2.75 to \$4.00 doz.

EHLERS



Oceanic Steamship Company

TIME TABLE S.S. ALAMEDA

The steamers of this line will arrive and leave this port as hereunder:

Leave S. F.	Arrive Hon.	Leave Hon.	Arrive S. F.
SEPT. 18	SEPT. 24	SEPT. 29	OCT. 5
OCT. 9*	OCT. 15	OCT. 20	OCT. 26
OCT. 20*	NOV. 5		

*Connects at Honolulu for Sydney, with Canadian-Australian line. Rates from Honolulu to San Francisco—First class \$65; Round Trip \$110; Family Rooms extra.

Wm. G. Irwin & Co., Ltd

OCEANIC S. S. CO. GENERAL AGENTS.

PACIFIC MAIL STEAMSHIP CO., & TOYO KISEN KAISHA

Steamers of the above companies will at Honolulu and leave this port on or about the dates below mentioned:

FOR JAPAN AND CHINA:		FOR SAN FRANCISCO:	
CHIYO MARU	SEPT. 21	MONGOLIA	SEPT. 18
ARIA	SEPT. 29	TENYO MARU	SEPT. 24
MONSIEUR	OCT. 11	KOREA	OCT. 2
TENYO MARU	OCT. 19	NIPPON MARU	OCT. 16
		SIBERIA	OCT. 22

FOR GENERAL INFORMATION APPLY TO

H. Hackfeld & Co., Ltd., Agents

AMERICAN-HAWAIIAN STEAMSHIP COMPANY.

Weekly sailings via Tehauantepec.

FROM NEW YORK TO HONOLULU.

Freight received at all times at the Company's Wharf, 41st Street, South Brooklyn.

FROM SAN FRANCISCO TO HONOLULU.

PLEIADAS, TO SAIL, SEPT. 14. NEBRASKAN, TO SAIL, OCT. 2

For further information apply to H. HACKFELD & CO., LTD., Agents Honolulu.

FROM HONOLULU TO SAN FRANCISCO.

PLEIADAS, TO SAIL, SEPT. 21. General Freight Agent.

Canadian-Australian Royal Mail Steamship Company.

Steamers of the above line, running in connection with the CANADIAN PACIFIC RAILWAY CO., between Vancouver, B. C., and Sydney, N. S. W., and calling at Victoria, B. C., Honolulu and Suva, Fiji, and Brisbane, are due at HONOLULU on or about the dates below stated, viz.:

FOR FIJI AND AUSTRALIA:		FOR VANCOUVER:	
MAKURA	SEPT. 17	MARAMA	OCT. 13
AORANGI	OCT. 16	MAKURA	NOV. 9
MOANA	NOV. 13		

Through Tickets issued from Honolulu to Canada, United States and Europe. For Freight and Passage and all general information, apply to Theo. H. Davies & Co., Ltd. General Agents

Matson Navigation Company

Schedule S. S. HILONIAN, in the direct service between San Francisco and Honolulu:

ARRIVE HONOLULU	LEAVE HONOLULU
SEPTEMBER 29, 1909	OCTOBER 5, 1909
OCTOBER 27, 1909	NOVEMBER 2, 1909
NOVEMBER 24, 1909	NOVEMBER 30, 1909
DECEMBER 22, 1909	DECEMBER 28, 1909

S. S. LURLINE of this line sails from San Francisco for Honolulu direct Sept. 17. S. S. ENTERPRISE of this line sails from San Francisco for Honolulu direct September 28th. CASTLE & COOKE, LTD., AGENTS.

HUSTACE - PECK CO., LTD

63 QUEEN STREET PHONE 295

General Contractors

Estimates given on all kinds of Draying, Teaming, Road Building, Excavating, Filling.

Reliable Supervision

Firewood, Coal, Wainane Sand For Sale.

Union-Pacific Transfer Co., Ltd.

Baggage Shipping Storage Wood Packing Coal PHONE 58

Furniture and Piano Moving.

Joseph A. Gilman,

SHIPPING AND COMMISSION MERCHANT. INSURANCE—FIRE AND MARINE.

Agent for ARTHUR SEWALL & CO., Bath, Maine; PARROTT & CO., San Francisco.

FINEST FIT

and cloth of A-1 quality can be purchased from

SANG CHAN, McCANDLESS BLDG., P. O. Box 961. Telephone 931. Unique Chinese Goods Wing Wo Tai & Co. 941 NUUANU ST.

ESTABLISHED IN 1858.

BISHOP & CO.

BANKERS

Commercial and Travelers' Letters of Credit issued on the Bank of California and The London Joint Stock Bank, Ltd., London.

Correspondents for the American Express Company and Thos. Cook & Son.

Interest allowed on term and Savings Bank Deposits.

Claus Spreckels. Wm. G. Irwin.

Claus Spreckels & Co.

BANKERS.

HONOLULU, T. H.

San Francisco Agents—The Nevada National Bank of San Francisco. Draw Exchange on the Nevada National Bank of San Francisco.

London—The Union of London and Smith's Bank, Ltd. New York—American Exchange National Bank.

Chicago—Cora Exchange National Bank. Paris—Credit Lyonnais. Hongkong and Yokohama—Hongkong-Shanghai Banking Corporation.

New Zealand and Australia—Bank of New Zealand and Bank of Australasia. Victoria and Vancouver—Bank of British North America.

Deposits received. Loans made on approved security. Commercial and Travelers' Credits issued. Bills of Exchange bought and sold.

Collections Promptly Accounted For.



The Yokohama Specie Bank, Limited

Capital (Paid up) Yen 24,000,000 Reserve Fund Yen 15,940,000

HEAD OFFICE, YOKOHAMA.

The bank buys and receives for collection bills of exchange, issues Drafts and Letters of Credit, and transacts a general banking business. The Bank receives Local Deposits and Head Office Deposits for fixed periods.

Local Deposits \$25 and upwards for one year at rate of 4% per annum.

Head Office Deposits, Yen 25 and upwards for one-half year, one year, two years, or three years at rate of 5 1/2% per annum.

Particulars to be obtained on application. Honolulu Office—67 S. King Street. P. O. Box 169.

M. TOKIEDA, Manager

The First AMERICAN SAVINGS AND TRUST CO

OF HAWAII, LTD.

SUBSCRIBED CAPITAL, \$200,000.00 PAID UP CAPITAL, \$100,000.00

President, Cecil Brown Vice President, M. P. Robinson Cashier, L. T. Peck

Office: Corner Fort and King Sts. SAVINGS DEPOSITS received and interest allowed for yearly deposits at the rate of 4 1/2% per cent. per annum.

Rules and regulations furnished upon application.

FIRE INSURANCE

THE B. F. DILLINGHAM CO. LIMITED.

General Agent for Hawaii: Atlas Assurance Company of London. New York Underwriters' Agency. Providence Washington Insurance Co. 4th FLOOR, STANGENWALD BLDG.

WM. G. IRWIN & CO., LTD.

AGENTS FOR THE Royal Insur. Co. of Liverpool, Eng. Commercial Union Assurance Co., Ltd., of London, England. Scottish Union & National Ins. Co. of Edinburgh, Scotland. The Upper Rhine Ins. Co., Ltd.

Alexander & Baldwin

LIMITED.

OFFICERS AND DIRECTORS.

H. P. Baldwin, President J. B. Castle, Vice President W. M. Alexander, Second Vice Pres. J. P. Cooke, Third Vice Pres. and Manager J. Waterhouse, Treasurer E. E. Paxton, Secretary W. O. Smith, Director J. R. Galt, Director W. R. Castle, Director

SUGAR FACTORS, COMMISSION MERCHANTS and INSURANCE AGENTS

Agents for Hawaiian Commercial & Sugar Co. Haiku Sugar Company. Paia Plantation. Maui Agricultural Company. Hawaiian Sugar Company. Kahuku Plantation Company. Kahului Railroad Company. Halekaha Ranch Company. Honolulu Ranch.

Castle & Cooke, Ltd

Honolulu, T. H.

SHIPPING AND COMMISSION MERCHANTS, SUGAR FACTORS and GENERAL INSURANCE AGENTS

representing Ewa Plantation Co. Waiialua Agricultural Co., Ltd. Kohala Sugar Co. Waimea Sugar Mill Co. Apohaa Sugar Co., Ltd.

Fulton Iron Works of St. Louis Blake Steam Pumps Weston's Centrifugal Boilers Babcock & Wilcox Boilers Green's Fuel Economizers Marsh Steam Pumps Matson Navigation Co. Planters' Line Shipping Co.

Wm. G. Irwin & Co. LIMITED.

SUGAR FACTORS and COMMISSION AGENTS.

Wm. G. IRWIN, President JNO. D. SPRECKELS, 1st V. Pres. W. M. GIFFARD, 2d V. Pres. H. M. WHITNEY, Treasurer RICHARD IVERS, Secretary D. G. MAY, Auditor

Agents for Oceanic Steamship Co., San Francisco, Cal. Baldwin Locomotive Works, Philadelphia, Pa. Hakalau Plantation Co., Hilo Sugar Co., Honolulu Plantation Co., Hutchinson Sugar Plantation Co., Kilauea Sugar Plantation Co., Olowalu Company, Paauhau Sugar Plantation Co., Waiananalo Sugar Co.

C. Brewer & Co., Ltd.

QUEEN STREET, HONOLULU, T. H.

AGENTS FOR: Hawaiian Agricultural Co., Ooakala Sugar Plant. Co., Onomea Sugar Co., Honoumuli Sugar Co., Waialua Sugar Co., Pepee Sugar Co., The Planters' Line of San Francisco Packets.

LIST OF OFFICERS: C. M. Cooke, President; George Robertson, Vice President and Manager; E. F. Bishop, Treasurer and Secretary; F. W. Macfarlane, Auditor; P. C. Jones, C. M. Cooke and J. R. Galt, Directors.

LIFE INSURANCE

Is not a Luxury; It is a Necessity. But you Must have the BEST and that is provided by the famous and most equitable Laws of Massachusetts. In the

New England Mutual Life Insurance Co.,

OF BOSTON, MASSACHUSETTS. If you would be fully informed about these laws, address

Castle & Cooke, GENERAL AGENTS, HONOLULU, T. H.

Forcegrowth Will do it

Madeira Embroideries

MRS. ROSENBERG, YOUNG HOTEL

Dr. F. SCHURMANN

Osteopath. Corner Union and Beretania Sts. House—Consulting, 2-3 p. m. Saturdays excepted. Operating, 8-12 a. m., 3-6 p. m. Phone 33.

BULLETIN ADS PAY

WILL MAKE FUN FOR CHARITY'S SAKE

For the benefit of Associated Charities, the Jolly Tars Minstrel Troupe will give two performances at the Opera House on September 25 and 26. The music will consist of twenty pieces, and the following program is arranged:

Overture—Light Cavalry Supper Grand Opening Chorus of Melody and Song. Tell All the Coons I'm Coming English and Rosenstain The Dusky Cavaliers and McKnight Oh! You Ragtime Dandy Coons Reed and Dodgesworth I'm In Love With the Man in the Moon Rosenstain Some Day When Dreams Come True Vall I Love My Wife, but Oh; You Kid 22 49 69 94 121 146 169 193 221 247 Have You Another Girl at Home Like Mary Thompson Premier Buck and Wing Artists Reed and McKnight Oh! You Candy Kid Strauss Shine on Harvest Moon Dahlin I'm Going to Buy Myself a Black Salome Dodgesworth Closing Chorus Jolly Tars Selection from opera comique—The Red Mill Herbert Mr. H. W. Chase and Company will present "The Volunteer Puglist," an illusion in one scene. Characters: Kid Burns, the puglist Chase White, the referee Max Shadowgraphs Wilson and Vaughn Time, present; place, San Francisco. West Virginia Tumbling Four. Montgomery, Parker, Sheldon, Hunter Ragtime Dancers with Wooden Shoes Reed and McKnight Orpheum Musical Experts Carl Baker and Rosario National City Quartet Thompson. Culp, Sullivan, Dodgesworth Comedy and Eccentric Juggling D. M. Allen To conclude with "The Hotel Half-back," a roaring farce in one scene. Characters: Silas, the hotel keeper Montgomery Eddy, a tramp Corcoran Jacobs, a butcher Strauss Sells, a traveling salesman Mitchell Sykes, a musician Rosenstain White, the hotel porter Lambke Carries, a waitress Cranston Musical Introductions: You'll Be Sorry Just To Late Cranston Closing ensemble Company

PLAN OF WORK AT PEARL HARBOR

It was stated by Rear Admiral Richard Hollyday, U. S. N., the chief of the bureau of yards and docks, who left for the coast on the Mongolia yesterday, that the work on the naval dock at Pearl Harbor will be started by the first of October. The Admiral stated further that the construction of the marine corps barracks will be well under way by the first of the year, but that the erection of buildings at the naval station may not be started for nine months. According to the estimate of Admiral Hollyday, the dry dock, naval station, marine barracks and the channel harbor dredging will all be completed by July, 1912.

Admiral Hollyday stated that when the channel is of sufficient depth so that naval vessels may enter Pearl Harbor without difficulty the active construction work will be proceeded with without delay. It is the intention of the Navy Department to arrange the work so it will all reach completion at about the same time.

Y. M. C. A. PLANS

The educational program of the Young Men's Christian Association will be particularly strong this year. Evening classes will be organized in shorthand, bookkeeping, typewriting, mechanical drawing, architectural drawing, English, arithmetic, algebra, geometry, trigonometry, civil service preparation, commercial law, salesmanship and public speaking. A class for boys who are employed during the day and have not finished their common school work will be held three nights a week under the direction of E. B. Blanchard, instructor in science at the McKinley High School, and B. E. Porter of the College of Hawaii. The work will include instruction in English, arithmetic, penmanship, geography and history. John C. Anderson of the City and County Road Department will be in charge of the book-keeping class, and C. H. Medalie of Hackfeld & Co. will instruct the shorthand and typewriting classes. L. C. Woodman of the Naval Station will be instructor in mechanical drawing, and J. E. Higgins of the U. S. Experiment Station will have charge of a class in business correspondence.

The Industrial Edition of the Evening Bulletin, wrapped ready for mailing, 50 cents at Bulletin office.

Corporation Notices

NOTICE OF REDEMPTION OF BONDS OF HAIKU SUGAR COMPANY.

HAIKU SUGAR COMPANY, pursuant to the terms of that certain Deed of Trust, dated September 28, 1903, made by it to Hawaiian Trust Company, Limited, hereby gives notice to the holders of bonds of Haiku Sugar Company, issued under said Deed of Trust, of the election of and payment of all the outstanding bonds of said Haiku Sugar Company on the first day of October, 1909, at the office of the Hawaiian Trust Company, Limited, Honolulu, County of Oahu, Territory of Hawaii, to-wit:

Bonds of the par value of \$1,000, each numbered as follows:											
2	28	55	77	101	129	151	175	201	228		
3	29	56	78	102	130	152	176	202	229		
4	30	57	79	103	131	153	177	203	230		
5	31	58	80	104	132	154	178	204	231		
6	32	59	81	105	133	155	179	205	232		
11	34	60	83	109	136	159	182	208	235		
13	35	61	84	110	138	161	181	210	236		
14	36	62	86	111	139	162	184	212	238		
15	37	63	87	112	140	163	187	213	239		
16	39	64	88	115	141	164	188	215	240		
18	41	65	89	116	142	165	189	216	242		
19	42	66	90	117	143	166	190	217	243		
20	46	67	92	118	144	167	191	218	244		
21	47	68	93	120	145	168	192	220	247		
22	49	69	94	121	146	169	193	221	249		
23	50	70	95	123	147	170	195	222			
24	52	72	96	124	148	172	196	223			
25	53	74	97	125	149	173	198	225			
27	54	75	100	128	150	174	199	227			

Bonds of the par value of \$500.00 each numbered as follows:

251	262	273	285	293	302	310	321	332	345
252	263	274	286	294	303	311	323	336	346
253	265	275	287	296	304	312	324	337	347
256	267	276	288	297	305	313	325	339	348
257	268	277	289	298	306	314	326	340	349
258	269	279	290	299	307	315	327	341	350
259	270	281	291	300	308	316	328	343	
261	271	283	292	301	309	317	329	344	

The holders of all outstanding bonds as numbered above, are hereby notified to present for payment of principal and interest accrued to October 1st, 1909, and to surrender said bonds at the place and on the date last above mentioned and that after October 1st, 1909, all interest on said bonds numbered as aforesaid shall cease.

Honolulu, August 21st, 1909.

HAIKU SUGAR COMPANY.
By E. E. Paxton,
Treasurer.

NOTICE OF REDEMPTION OF BONDS OF PAIA PLANTATION.

PAIA PLANTATION, pursuant to the terms of that certain Deed of Trust, dated September 28, 1903, made by it to Hawaiian Trust Company, Limited, hereby gives notice to the holders of bonds of Paia Plantation, issued under said Deed of Trust, of the election of and payment of all the outstanding bonds of said Paia Plantation on the first day of October, 1909, at the Office of the Hawaiian Trust Company, Limited, Honolulu, County of Oahu, Territory of Hawaii, to-wit:

Bonds of the par value of \$1,000, each numbered as follows:											
1	29	81	123	163	207	247	283	319	360		
2	40	83	124	164	208	248	284	320	364		
3	41	85	125	165	210	249	285	322	365		
5	42	86	126	168	211	251	286	323	367		
6	43	87	127	169	212	252	287	326	368		
7	44	88	128	170	213	256	288	328	369		
8	45	89	130	171	214	257	289	330	370		
9	46	90	131	173	216	259	290	332	371		
10	47	92	132	174	217	260	293	333	372		
11	51	95	133	176	218	261	294	334	373		
12	52	96	134	177	219	262	295	335	374		
13	53	97	135	179	220	263	296	336	376		
14	54	98	138	180	221	264	297	338	377		
15	55	99	140	181	224	265	298	340	378		
16	57	101	141	182	225	266	300	341	379		
17	58	102	142	183	226						

BUSINESS DIRECTORY

EMPLOYMENT AGENCY.

Japanese Employment Association, Kuanau and Pauahi Sts. Call up phone 697 if you want a cook, good boy or servants.

M. Ueda, Japanese Employment Office, Alapai St., near Beretania, 4498-1m

CONTRACTOR.

Otto Oss, Carpenter, Jobber and Contractor, Phone 1563, 1420 Victoria St. 4321-1m

PROFESSIONAL.

Nathan M. Lewis, Teacher of Piano and Organ, 1462 Emma, 4498-1m

REPAIRING.

Woven Wire Mattresses repaired at the Factory Honolulu Wire Bed Co., 1260 Alapai St. Telephone 535 2946-1f

ARCHITECTS.

Duisenberg & Farrar, Architects, 63-63 Alexander Young Building, Telephone 275.

PLUMBING.

Fee Sing Kee-Plumber and Tinsmith, Smith St., bet. Hotel and Pauahi.

Bulletin Business Office Phone 256, Bulletin Editorial Room Phone 185

Oahu Railway Time Table.

OUTWARD.
For Waianae, Waiawa, Kahuku and Way Stations—9:15 a. m., *3:20 p. m.
For Pearl City, Ewa Mill and Way Stations—7:30 a. m., *9:15 a. m., *11:05 a. m., *2:15 p. m., *3:20 p. m., *5:15 p. m., *9:30 p. m., *11:00 p. m.
For Wahiawa—9:15 a. m. and *5:15 p. m.

INWARD.
Arrive Honolulu from Kahuku, Waiawa and Waianae—8:36 a. m., *6:31 p. m.
Arrive in Honolulu from Ewa Mill and Pearl City—17:46 a. m., *8:36 a. m., *10:38 a. m., *1:40 p. m., *4:31 p. m., *6:31 p. m., *7:30 p. m.
Arrive Honolulu from Wahiawa—8:36 a. m. and *5:41 p. m.

Daily
* Ex. Sunday
1 Sunday Only
The Haleiwa Limited, a two-hour train (only first-class tickets honored), leaves Honolulu every Sunday at 8:22 a. m., returning, arrives in Honolulu at 10:10 p. m. The limited stops only at Pearl City and Waianae. G. P. DENISON & C. SMITH

Pau Ka Hana

THE ENEMY TO DIRT. At Your Grocer's.

THE CHAS. R. FRAZIER COMPANY
FOUR ADVERTISERS
Phone 371, 122 King St.

ICE

manufactured from pure distilled water. Delivered to any part of city by courteous drivers.

OAHU ICE AND ELECTRIC CO., Kewalo, Telephone 528.

KEYSTONE-ELGIN WATCHES INGERSOLL WATCHES At All Watchdealers.

Jos. Schwartz, Agent for Hawaiian Islands, Cor. FORT and KING Sts., Honolulu.

Ice Delivered to residences and offices at 25c per hundred in 10-lb. lots or more.
W. O. BARNHART, 133 Merchant St. Tel. 146.

BUILDING MATERIAL

OF ALL KINDS. DEALERS IN LUMBER.

ALLEN & ROBINSON, Queen Street :: :: Honolulu.

M. Phillips & Co. Wholesale Importers and Jobbers

EUROPEAN AND AMERICAN DRY GOODS. FORT and QUEEN STS.

S. SAIKI,

Bamboo Furniture Made to Order. Picture Framing a Specialty.
563 S. BERETANIA ST. TELEPHONE 497.

HONOLULU IRON WORKS

Improved and Modern SUGAR MACHINERY of every capacity and description made to order. Boiler work and RIVETED PIPES for irrigation purposes a specialty. Particular attention paid to JOB WORK, and repairs executed at shortest notice.

P. H. BURNETTE Com'r. of Deeds for California and New York; NOTARY PUBLIC; Grant Marriage Licenses; Draws Mortgages, Deeds, Bills of Sale, Leases, Wills, Etc. Attorney for the District Courts, 79 MERCHANT ST. HONOLULU; PHONE 310.

SPORTS

Balance of Regatta Day Program

Regatta Day finished in a blaze of glory on Saturday, and the remaining events which were run after the Bulletin went to press resulted as follows:

The launch race went to the Tennessee, which simply rushed past her opponents at the finish and won by a few feet. The service cutter race was won by the California crew after a fine struggle with the Washington, which defeated the Tennessee for second place by a narrow margin.

Then the four-oar women paddle came up for consideration, and the Good Time beat the Malika Fine by two lengths.

The racing cutter event for the warship crews was a beauty, and the Tennessee bunch won from the South Dakota by a couple of lengths.

The West Virginia was second and the California and Washington finished next. The last race of the day was the sailing canoe one, which was won by the Kiokealani. The Hailuannu finished first, but was disqualified for not rounding the water mark.

The official results were as follows:
Senior six-oared barge race—Tennessee, first; Healanis, second. Time, 15:07 1-2.
Freshmen six-oared barge race—Myrtles, first; Healanis, second. Time, 11:46 1-2.

Four-paddle canoe race—Aa, first; Naulani, second.
Senior pair-oars—Myrtles, first; Healanis, second. Time, 1:29 1-5.

Four-paddle canoe (modern)—Good Time, first; Laukila, second.
Junior pair-oars—Myrtles, first; Healanis, second. Time, 1:44 1-2.

Sailing canoe race—Lei Huan, first; Alabama, second.
Navy steam launches—Tennessee, first; Colorado, second.

Twelve-oared service cutters—California, first; Washington second; Tennessee, third.
Four-paddle canoe race for women—Good Time, first; Malika Fine, second.

Twelve-oared racing cutters—Tennessee, first; South Dakota, second; West Virginia, third; California, fourth; Washington, fifth.
Sailing canoe (modern)—Kiokealani, first; Palika, second.

RECREATIONS

ART.

More than a century has passed since Sir Walter Scott wrote the Lay of the Last Minstrel, the immortal lines, probably the finest commentary on patriotism known in the English tongue. But although patriotism is one of the noblest virtues of mankind, and has inspired men to splendid acts of heroic and self-sacrifice in all ages and in many lands, these are times when it may bring about a conflict of warring emotions and impulses. This fact is forcibly brought home to you in "A Tale From the War," the feature film at the Art today. The versatile Arpan Bros. have caught on with the Honolulu public in their clever musical comedy act, and are drawing crowded houses. Their Dulcimer and Corillon "stunts" are simply immense, and should be missed by no one who desires an entirely novel entertainment. Admission as usual.

ORPHEUM.

Wise & Milton's "Coon Show" at the Orpheum is the best seen here in many moons. The oldtime minstrel show during the week-end was a feature much enjoyed by the patrons more than it was enjoyed by the hundreds who had failed to secure seats in advance and were, consequently, turned away. There is to be an entire change in the program to be presented tonight and a most enjoyable entertainment is promised those who are fortunate enough to get inside the doors.

PARK.

A straight tip: There is no bad air or stale smoke in the Park. That is why it is now, with its new rain shelter, called the "most comfortable theater in town," and is as cool as all outdoors. The leading film tonight is one of Kalem's best and tells of the rescues of a Southern girl from a burning house in a most realistic manner. The Minette Sisters will appear in a character song in Japanese costume. Don't miss this program.

EMMA SQUARE CONCERT.

The Hawaiian band will give a public concert this Monday evening at Emma Square, at 7:30:

- PART I.
March—Flag of Victory Dion Overture—Rosamunde Schubert Intermezzo—Naganece Williams Selection—Maritana Wallace
- PART II.
Vocal—Hawaiian songs, ar. by Berger Selection—The Fair Co-Ed ... Linders Waltz—Remembrance ... Walther Final—The Governor's Hall The Star Spangled Banner.

AMUSEMENTS

ART THEATER

PATHE FRERES FEATURE FILM
"A Tale From the War"
THE FAMOUS
Armon Bros.,
IN THEIR REFINED AND UNIQUE
MUSICAL COMEDY ACT.

PIANOFORTE SELECTIONS!
NO EXTRA CHARGES!!!

AMUSEMENTS. Honolulu Athletic Park

SUNDAY, SEPTEMBER 26.

GAMES TO BE ANNOUNCED LATER.

Seats on Sale at Wall, Nichols Co., Ltd., King Street.

THE ORPHEUM

The Home of Vaudeville.

J. C. Cohen Proprietor

ENGAGEMENT EXTRAORDINARY
Of the Kings of Musical Comedy

Wise & Milton

And company of Singers, Dancers and Musical Artists.

Prices 10, 20, 30 cents

Matinee Wednesday and Saturday.

The Park Open Air Theater

Fort Street Below Beretania.

JAS. CARLISLE
(From the Empire Circuit)
MUSICAL MONOLOGUE ARTIST.

Admission 10 and 15 cents
Children 5 cents

Empire Theater

TONIGHT

Motion Pictures
SPECIAL ENGAGEMENT
MRS. MAKENA
Hawaiian Soprano.

Princess Rink

Open Every Afternoon
And Evening

AFTERNOON SESSION, 3 TO 5
EVENING SESSION, 7:30 TO 10:30

Exhibition of
Fancy Skating
BY
Miss Emma Wiener

Champion Lady Skater of the World.

ADMISSION 15c; Skates, 15c

The Industrial Edition of the Evening Bulletin, wrapped ready for mailing, 50 cents at Bulletin office

WANTS

WANTED

Write boy before and after school, to learn grocery business. Address H. D., this office, 4418-6f

A loan of \$2,000 on gilt-edged real estate security. Address 1845, Bulletin, 4491-4f

An experienced lady hat trimmer. Address K. Fukuroda, Hotel St. 4383-4f

To buy young chickens of any breed. Pond Dairy, Tel. 890, 4414-1W

Clean wiping rags at the Bulletin office.

SITUATION WANTED.

Engineer, having five years' sea and freezing experience, seeks employment; any repairs, Manu, Queen Hotel, 4419-2f

Japanese Private Cooking School—Families or hotels supplied with cooks. C. M. Matsui, 1457 Auld Lane, Phone 1564.

LOST.

Black Cocker Spaniel from corner Makiki and Hastings Sts; answers to name of Rowdy. Return to Wall, Nichols Co. and receive reward. 4419-3f

Shell curved ivory bracelet, set in gold, between Young Hotel and Kalihl. Reward if returned to this office. 4413-1f

FOUND.

A ram at Palama Fire Station, Sept. 19. Owner can have same by paying for this ad. Address \$99 N. King St. 4413-3f

FOR SALE.

A THEATRE FOR SALE in the center of the city, with comfortable chairs and complete moving picture outfit. Will seat over 500 people. A bargain. The Fleet will arrive in two weeks and this is an excellent opportunity to make a harvest. Inquire Real Estate Exchange, 82 S. King St.

A few first mortgages on real estate; 12 per cent net; money invested on income bearing property; absolute security; in sums from \$100 upward. P. E. Strauch, Attorney-at-law, Waiy Bldg., 74 S. King St. 4385-1f

Ferns—Australian and other varieties; also logs, bachelas, begonias and stephanotis plants. For particulars call on Miss Johnson, Fort street, near Vienna Bakery 4390-4f—dh

Six H. P. Locomobile engine, with fittings for launch; cheap. For particulars apply 1669 Beach Road, 4402-1m

A restaurant; cheap; must go to States; good trade. Apply at 1156 Fort street. 4414-1W

TO LET

Desirable mosquito-proof rooms and board for gentlemen. "The Macdonald" New Bungalow, Puna-hou Street. 4380-1f

Large furnished rooms for ladies, with or without board. Mrs. F. D. Wicke, 1245 Beretania Ave. 4278-1f

Two furnished rooms. Apply Mrs. D. McConnell, 1223 Emma St.

FOR SALE — KAIMUKI DISTRICT.

Almost new house, 4 rooms, bath, lot 50x116-8 feet improved, a pretty home, fine view ocean and city, near Sixth avenue. Price \$1,200.

Another, and this one is just what you are looking for. A real bargain; up-to-date style bungalow, 5 large rooms; both wide verandas; two lots, 50x232 feet; large front lawn planted with hedges, plants, many kinds of fruits. Honolulu can't produce a better for the money for home or investment. Price \$2,200. Picture at office.

PACIFIC COAST REAL ESTATE CO. F. B. Munroe Mgr. 845 Kaohumahu St.

MASSEURS

Mr and Mrs. Hashimoto, Telephone 637.



Rheumatism, Bruises, Tired Feeling, and other Ailments Quickly Relieved.

178 BERETANIA AVE., near EMMA Bath and Electrical Treatment.

Woman's Exchange

for
Caries, Sisal Leis, Calabashes, etc. Hotel, near Fort.

RING UP

Levy's for Groceries

Phone 76.

YOUNG LADIES WANTED to learn the hairdressing trade.

EMRICH LUX

Fort and Beretania Sts. Harrison Block.

PRIMO BEER

S. UCHIDA

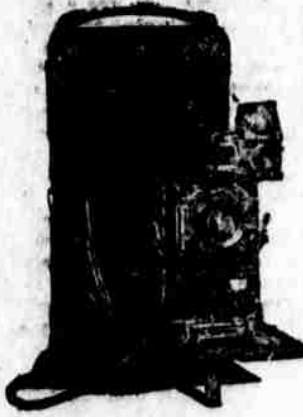
Bicycle shop and general repairing work. Specialty in nickle, silver and gold plated work. KING, OPP. ALAPAI ST.

Received ex Alameda a New Shipment of Latest Styles in

LADIES' HATS

K. UYEDA, 1009 NUUANU ST.

"For Sale" cards at Bulletin.



\$1 Buys A Camera

We sell Kodaks and Cameras from \$1 upward

Kodak Films and Supplies of all kinds

Honolulu Photo Supply Co.,

"Everything Photographic" Fort near Hotel

The J. CARLO LOAN OFFICE

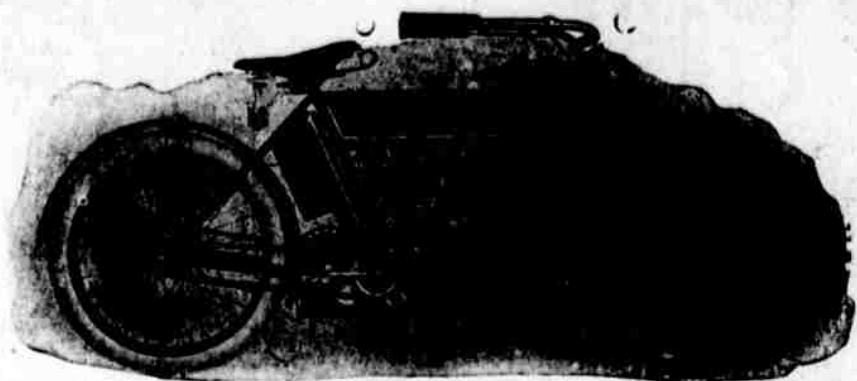
Fort Street near Hotel
QUALITY COUNTS.
Roses, Carnations and other Cut Flowers.
MRS. E. M. TAYLOR
The Honolulu Florist.
Young Building, Tel. 339.
Little Things.

BULLETIN ADS PAY

Use RED SEAL CARBON---It is the Best

SOLD ONLY BY THE OFFICE SUPPLY CO., LTD.

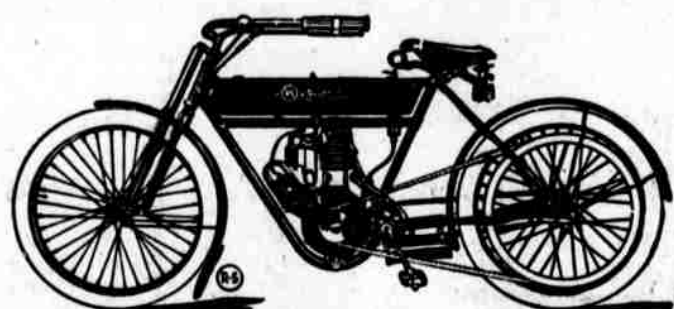
Arrived by "Hilonian"



A Large Consignment of the famous

Reading-Standard Motorcycles

Chain and Belt Drive. Call and See Them



E.O. Hall & Son, Ltd.

SPORTS

Local and National

SAINTS DEFEAT DIAMOND HEADS

FINE, SNAPPY GAME IS PLAYED AT LEAGUE GROUNDS—KAMS DEFEAT U. S. S. CALIFORNIA 9 TO 6 AND ST. LOUIS NINE MAKES THREE TO GUESTS' ONE.

As soon as the Regatta was pa... on Saturday, a big crowd drifted out to the League Grounds to see the Saints and Diamond Heads at work. And a fine game it was, too; there was no scoring till the fifth inning, when the Saints made one run through the agency of Freitas, who was brought home by Markham.

Then the College boys picked up two in their sixth, and it snapped this way: Bushnell got to first safe, and made second on a passed ball. Jimmie Williams flew to Heny Chillingworth, and then Harry Bruns got to second owing to Leslie getting hurried and throwing to wrong man—Bushnell advanced to third. Johnnie Williams came up to bat and got to second owing to a general mix up during which Bushnell was out between third and home. In the meantime Harry Bruns got to third. Freitas made first safe and Bruns got home, whilst Johnnie Williams sprinted to third. Markham to bat and Williams home on passed ball, Markham dying at first. Two runs and the crowd went up in the air with delight.

The Jewels came up to bat regularly and always went out the same way—1, 2, 3—until to second half of the eighth when Rice got a free pass, and then "Koads" Chillingworth hit a peach of a three bagger and Rice romped home. Henry Chillingworth made third safe and then overran to bag and was put out. It was very unfortunate as there were no men down, and Rice had already scored.

Considering that Eddie Fernandez, Davis and Sumner were the next men up, the Jewels would have stood a good chance of increasing their score if "Klado" had been more careful.

However, no further score was made by either side and the game ended in favor of St. Louis by a score of 3 to 1. The feature of the play was the good work of "Klado" Chillingworth at short stop; he stopped some red hot ones, and the one handed play that part George Bruns out on second was a treat to see. Markham also made a fine running catch when he disposed of Davis in the right field.

It was an interesting game right through, and the routers got in some fine work. The remaining two games between the D. Hs. and the Saints should draw big crowds of fans. The first game was scheduled to start at 1:35 o'clock, and was supposed to be between the Kams and U. S. S. California.

The latter team did not show up till very late, and in the meantime the Fort Shafter boys got going with the Kams.

When the California nine losted up the Shafter-Kam game was called, and the schedule match started. It was a pity the California boys were late, but their ship is anchored outside the harbor and they could not get to the grounds on time.

However the Kams made three in their first; two in both third and fourth, and still two more in the sixth. Nine to all was the score until the second half of the last innings—only seven were played. The California did things with a vengeance then, and knocked up no less than six runs.

The Kams were slack in their play, and it would have given them a shock if the sailors had scored a few more runs and tied the score.

Al. Castle umpired the big game, and did good work, although once or twice there was room to doubt his decisions. The big crowd stayed with the game to the finish, and the general talk after the match was about the possibilities of Diamond Heads being able to defeat the Saints at their next time of meeting.

The official score was as follows:
ST. LOUIS.
1 2 3 4 5 6 7 8 9
Runs 0 0 0 1 2 0 0 0—3
DIAMOND HEADS.
1 2 3 4 5 6 7 8 9
Runs 0 0 0 0 0 0 1 0—1

Three-base hit, Freitas; sacrifice hits, Leslie, H. Bruns; stolen bases, Bushnell, H. Bruns; double plays, Markham to G. Bruns, Leslie to Da-

vis; struck out, by Williams 6, by Leslie 6; bases on balls, off Williams 3, off Leslie 2; wild pitches, Williams 1, Leslie 4; passed ball, Winne.

Good Games At Riverside Park

At Ania Park yesterday there were two good games of ball, and all the usual bunch of fans turned out to watch them. In the first game the Kewalos defeated the Palamas by a score of 4 to 1, after a snappy game. The second game was between the Aalas and a combination nine from the Maryland and South Dakota.

The former team won by a score of 6 to 5, and the result was in doubt up till the end of the game. The ship nine made five in their second inning, but could not add to the score right through the balance of the game.

The local team made two runs in their third, and then in the eighth came with a rush and scored no less than four. Henry Chillingworth played a good game at short stop and second base, and was responsible for the Aalas winning the match.

Field Day For The Service

Things are moving as regards a Field Day for the different branches of the Service, and Mr. Graham of the Service weekly has been in communication with the officers of the Army and Navy, and has been assured that they will do all in their power to make the meet a success.

The idea is an excellent one, and a fine program of sports could be arranged that would surely attract a huge crowd of people. Running and walking races would be on tap, and high, long and hop-step-and-jumps would be on the program. Shot putting, pole vaulting, three-legged and potato races, would keep the crowd amused, and a high class obstacle race would bring down the "house."

It is sure to be a great day's sport and will become an annual affair that will easily take first place in the athletic line in these islands.

Saturday Games At Athletic Park

On Saturday at the Athletic Park the Tennessee baseball nine defeated the Chinese Athletic Association by a score of 3 to 2 after a ten innings game. It was a good game, and the excitement ran high all the time. The fans roared for the home team, and the Jackies were not backward in their efforts either.

Seagar, the ship pitcher, did real good work, and in the second inning saved the day by fanning three men when there was a man on third and none gone.

There was a second game between the J. A. Cs and the South Dakota, and the former team whitewashed the sailors to the tune of 4 to 0. Flores pitched a great game for the J. A. Cs and struck out no less than fifteen of the Jackies.

MOTOR CAR GOSSIP

All the garages have been doing a rushing trade for the past week and the managers are all happy. The sailors did a lot of running about in machines, and several round the island trips were made.

Auto No. 288 met with a peculiar accident yesterday morning out on King street at the Chinese gardens. The machine, in making a sharp turn, skidded on the wet car line and, turning right around, plunged backwards through the fence. The hind wheels were through the fence and the front ones remained on the curb. No damage, to speak of, was done but it was a narrow escape from a bad accident.

Whitney & Marsh, Limited

We have just unpacked quite an assortment of

Wash Materials

including

IRISH POPLIN, a handsome mercerized fabric in solid colors, 28 in. wide, - - - **35c yd**

FRENCH LINEN, soft finished, all pure linen, in all desirable shades, 47 in. wide, - - - **\$1 yd**

EMBROIDERED PIQUES, a French material, white ground with small colored designs; very pretty for children's coats, etc.

PURE LINEN DUCK, in natural color, 36 in. wide, **75c yd**

FLOWERED ORGANDY, quite sheer, white ground with floral designs and silk stripe, 27 in. wide, - - - **25c**

Also many other styles of fancy goods, and a full line of

Persian Lawns, Indian Linens, Nainsooks, Wash Chiffon, Etc.

West Virginia Wins Championship

Yesterday at the League Grounds the fleet championship baseball game was played, and the West Virginia nine, which has gone down a couple of times in defeat lately, beat the Washingtons by a score of 6 to 1.

It was a grand game, and a big bunch of sailors attended at the grounds; the ships' hands played all the time, and the routers of the two ships were at their best.

The scene was one that will not easily be forgotten by those fortunate enough to be present, and the Jackies certainly showed the local people a few wrinkles in the rooting line. Right from the start it was seen that the W. Vs were going to put up a very different brand of ball to that which they did last week, and, although English, their best pitcher, was unable to play. Schaeffer—"Snakes"—tossed up a fine brand of curves that kept the Washington boys guessing.

Monroe, who caught for Schaeffer, did excellent work, and he used his head a lot. Rice and Harris, the Washington battery, did not play up to form, and the W. Vs had not much trouble with the attacking party.

The Washington team lead off with one run in their first, and then the rooting was fierce and the band began to do stunts. The West Virginians did nothing till their third inning, when they made no less than three runs. Then in the sixth and seventh they added one more, and wound up by making one more in the ninth, and won by a score of 6 to 1.

The official score was as follows:
WEST VIRGINIA.
1 2 3 4 5 6 7 8 9
Runs 0 0 3 0 0 1 1 0 1—6
Base hits .. 1 0 3 0 0 3 1 0 2—10

WASHINGTON.
1 2 3 4 5 6 7 8 9
Runs 1 0 0 0 0 0 0 0—1
Base hits .. 1 0 1 0 0 0 0 1—3
Two-base hits, Monroe, Schaeffer, Reed, Socha; sacrifice hits, McGinn, Reed, Snyder, Schaeffer, Maier 2, Blevins, Daniels; double plays, Blev-

Ewa Tennis Club Tournament

ins to Jelly, Phelps to McGinn; hit by pitcher, Snyder; struck out, by Rice 4, by Schaeffer 9; bases on balls, off Rice 1, off Schaeffer 2; umpire, O'Neil. Scorer, H. E. Morris. Time, 1:45.

ROUND 1.

Eklund and Grate beat Muller and Davidson, 6-4, 6-4.
Bento and Collins beat G. F. Renton Jr. and Schmidt, 6-2, 6-3.
Fasoth and McEachern beat Vannatta and Gouvea, 3-6, 6-4, 7-5.

ROUND 2.

G. F. Renton Sr. and Guild beat Douglas and Aiding, 6-4, 6-3.
Bento and Collins beat Eklund and Grote, 5-7, 6-0, 6-3.
Fasoth and McEachern beat McKeever and Greenfield, 6-4, 6-4.
McLean and Nolan beat Silver and Larsen, 7-6, 6-0, 6-2.

ROUND 3.

Bento and Collins beat Renton and Guild, 6-3, 9-7.
McLean and Nolan beat Fasoth and McEachern, 6-3, 6-3.

FINALS.

Bento and Collins beat McLean and Nolan, 6-0, 6-1, 1-6, 4-6, 6-3.

SHORT SPORTS.

On Saturday night at the Princess skating rink the mile race was won by Mead of the U.S.S. Maryland, who defeated Garnett, of the Marine Corps, by a quarter of a lap. W. Heller of the Washington, was third in the race but was overlapped.

The Marathon race between Taukamoto and Nigel Jackson has been fixed up, and on October 3 the race will probably take place. Both men are in active training and a great race is sure to eventuate.

The tennis tournament for Fleet officers, which is to be played on the Beretania courts, is attracting a lot of attention and it will start on September 27.

Most people are prone to put off making their wills.

It will take only ten minutes of your time and cost you nothing to have your will drawn by us in proper legal form.

Bishop Trust Co., Ltd., Bethel Street.

IRON BEDS MATTRESSES FURNITURE

Coyne Furniture Co., Ltd.

BOSTON RESTAURANT. GOOD MEALS FOR 25 CENTS. NEW AND EXPERIENCED COOK. Everything in Season. Hotel Street, near Fort. We want to see all our old customers come back.

THRIFTY WOMEN Open a Saving Account. Interest Four and One-half Per Cent.

BANK OF HAWAII LTD. Capital and Surplus \$1,000,000.00.

C. Q. YEE HOP & CO.

SHIPPERS and FAMILY BUTCHERS

TELEPHONE—251

Chinese Silk and Grass Linen Embroidered Goods

Just arrived from China in suit patterns and shirt waists.

Table Covers and Doilies

In all sizes. New heavy and light pongee silks and grass linens.

YEE CHAN & CO.,

King and Bethel Sts.

Defy fire and cracksmen with a

Hall Safe

Small, medium and large sizes at

H. HACKFELD & CO. Ltd. Hardware Department

We Haul

Freight from the wharves and do all kinds of heavy draying. For unusually heavy hauling we have a traction engine which may be engaged at any time. Be sure to get our prices.

Honolulu Construction & Draying Co., Office Fort St. Opp. W. G. Irwin & Co. Phone 291.