

The Best Salesman in Honolulu is the Best Newspaper in Hawaii--the Evening Bulletin

# EVENING BULLETIN

3:30 O'CLOCK

THE BULLETIN HAS QUANTITY AND QUALITY IN PATRONAGE

EDITION

One Vote For

The EVENING BULLETIN  
PACIFIC STATES TOUR.

THURSDAY, JUNE 20, 1907.

This vote is good until  
July 10, 1907.

PRICE 5 CENTS

### STEAMER TABLE

From San Francisco:	
Sierra	June 21
Coptic	June 25
For San Francisco:	
Sierra	June 27
Korea	June 28
From Vancouver:	
Aorangi	June 29
For Vancouver:	
Mlowera	June 26

Vol. IX No. 3723

HONOLULU, TERRITORY OF HAWAII, THURSDAY, JUNE 20, 1907

## PUBLIC SCHOOLS CLOSING WORK



### Helpful Advice Given Graduating Normal School Class

Superintendent Babbitt in his remarks to the Normal School graduates, said: "Last year I had the pleasure of welcoming the graduating class of the Normal School into the ranks of the teachers under the Department of Public Instruction, and I take even greater pleasure in doing the same this year because a further acquaintance with our public schools and their needs convinces me of the great value of normally trained teachers and the wonderful opportunities offered by our unusual conditions to make a splendid record for yourselves."

"It is not difficult to distinguish between the work of a teacher normally trained and one whose qualifications are purely academic. This is particularly true in elementary schools and as most of ours are such it emphasizes the need of the Normal teacher. It has been my privilege during the last year to visit a large number of our schools and I have found very marked evidences of the influence of the Normal teacher in the school-room, on the play ground, in the school garden, in the sewing room and manual shop and the reflected influence in the homes of the children. There is decidedly a place for you."

"I congratulate you heartily on the completion of your course here and bid you God-speed in your future work."

The commencement exercises of the Honolulu Normal and Training school were held in the assembly hall this morning. The hall was profusely decorated with flowers. On the wall were hung pictures of the late Superintendent of Public Instruction Atkinson and two other prominent educators.

Promptly at 10:30, the school gong rang and all the teachers and their pupils assembled in the main room. The chairs of the graduating class were designated by streamers of the class colors, white, red and blue. Seated on the platform with Principal Wood were Superintendent of Public Instruction Babbitt, G. W. Smith, and Mrs. Mills, principal of Mills College, of California. The hall was filled to its utmost capacity, but the guests were favored with the mountain breeze.

The exercises commenced with the

Alligator Pears, Pipeapples and Bananas. Next shipment to Coast per S. S. Sierra, June 27.

Leave your order at  
WELLS-FARGO OFFICE, KING ST.



### Just What You Want QUICK!

We've got it for you in our elegant stock of tropical worsteds representing the latest colors and patterns. These are the clothes for this climate—look best, feel best.

They have an individuality and a rare combination of finish and fit prized by careful dressers. Made by Alfred Benjamin & Co., the exclusive Ready-to-Wear Clothiers.

COR. FORT AND HOTEL STS.

### The Kash Co., Ltd., Everything For Men and Boys

### OCTOBER IS DATE FOR LANAI SALE

#### Will Come Before U.S. Supreme Court At That Time

The Lanai case is to come up before the United States Supreme Court about October 15. Attorney General Peters received this information today in a cable from McKenney, clerk of the court. The cable was in answer to one sent this week by Peters, worded as follows: "Clerk U. S. Supreme Court, Washington."

"What is earliest possible date court will hear motion dismiss writ error issued by Supreme Court Territory?"

"PETERS."

In response to this cable the clerk answers today: "October 15th next." The Attorney General states that he will prepare and forward to the clerk a motion to dismiss both the Lanai case and the Morita Kaizo case, to be presented to the United States Supreme Court on the date specified, and will at the same time ask whether the court wishes to hear personal argument on the matter or will have it submitted on briefs.

This means that the Lanai case will be in abeyance until next fall and Link McCandless must content his soul in patience. In the meantime the Territory will go ahead as if there were no appeal, and probably before the case comes up before the court the new High School will be well on its way toward completion on the Maertens property, one of the pieces of land acquired by the Territory in exchange for the Lanai Lands.

Morita Kaizo, the Japanese murderer, is also given a new lease of life. If he is executed, it cannot be until some time after October 15.

### NOT IN THE TRUST

The Seaside Hotel is as ever—aband in a class by itself. Remember, band concert and dance this evening. Come out and enjoy the moonlight in the only independent hotel in Honolulu.

The regular meeting of the Promotion Committee has been postponed until tomorrow, 1 p. m.

"For Rent" cards on sale at the Bulletin office.

### J. Höpp & Co.

LEWERS & COOKE BLDG.  
185 KING ST.

Are Showing New and Artistic Designs in

### "Handcraft" Furniture

Iron Beds,  
Go-Carts, etc.

Drop in and See Them



**HOLLISTER DRUG CO.**  
ESTABLISHED 1878

### PLANS MOVING FOR FOURTH CELEBRATION

#### Fireworks, Confetti and Sports Will Be Provided

The executive committee which has in charge the arrangements for the celebration of the Fourth of July is preparing a great variety of exercises, sports and other features which will make this year's events as good, if not better, than any which have been had in this community before.

In the forenoon the literary exercises will take place, and during this part of the day the Antiques and Horribles will also hold forth. It is possible that 150 boys from the Boys' Brigade will be included in this.

In the afternoon sports of various kinds will be the feature. At present the committee is conducting negotiations with the Baseball League to lease the games which have been scheduled to take place on the Fourth. If these are successful the committee will pay the League a certain sum, to take the place of its gate receipts, and the public will then be admitted to the games free of charge.

Furthermore if this scheme is carried out, the sports which the committee will have on that day will take place at the Baseball Park after the baseball games are over. The committee will offer many prizes for various sports, such as running, jumping, putting the shot and the usual field-day sports, as well as for other less dignified but very ludicrous events, such as catching the greased pig, potato racing, climbing the greased pole, etc.

It has been suggested that in case the committee cannot come to terms with the Baseball League the games should be given at the Aala Park.

(Continued on Page 2)

### \$4,500,000 BOND ISSUE AUTHORIZED

#### Hilo Railroad Co. Plans Financing Of Its Extension

The issuance of a bond issue of \$4,500,000 worth of bonds was authorized by the stockholders of the Hilo Railroad Co. at a special meeting held this morning at the offices of Dillingham & Co. The bonds are to refund the present bonded indebtedness of the company and to extend the railroad into the Hamakua district while some of it will be held in reserve to pay for future extensions.

"The stockholders authorized the issuance of bonds for the construction of the railroad into the Hamakua district from Hilo," said Secretary W. F. Dillingham this noon. "The matter is now in the hands of the directors who, working together with B. F. Dillingham, will undertake to finance and construct the road over the first section. In this way official recognition has been given to the plans. It is anticipated that shortly the matter will be in such shape that it can go before the public in a more definite form."

Dillingham referred the reporter to L. A. Thurston, the president of the company, for more definite information.

"A bond issue of \$4,500,000 has been authorized," said Thurston when seen. "Of this \$1,000,000 is for the refunding of the present bond issue. The sum of \$2,000,000 is for the present proposed extension into Hamakua, and \$1,500,000 will be in reserve for any other extension which may be required later on."

"The first section will be from Hilo to Hakalau, a distance of approximately fifteen miles. The plan is to go right ahead with the construction all the way to Hamakua, but to finish this section first and to operate trains on it as soon as it is finished."

### CURFEW LAW WILL NOW BE ENFORCED

#### SAYS IAUKEA,

#### NOW BE ENFORCED

Sheriff Iaukea has issued a general order to the police force to enforce the curfew law, and as a consequence young people under the age of fifteen will be liable to land at the police station in case they venture forth on the streets at night without being accompanied by some older person.

"I have ordered the officers to pay attention to the parks," said Iaukea today, "as that is where the young people congregate, especially when the band is playing there, so that is where they will be able to find the greatest number of offenders. There has been considerable violation of this law recently, and it is my intention to make an example of a few offenders, as this will probably have a good effect on the rest."

A furnished house is for rent for the summer. Good location. See For Rent column.

Ribbons and hat bands in college and club colors at Kerr's.

### License Session Secret

The meetings of the Board of License Commissioners will hereafter be held in executive session, with the exception of the public hearings, which, according to law, cannot be run on the star-chamber plan. The Board arrived at this decision yesterday afternoon, the majority of its members deciding that they could not be as free in the expression of their opinions with the press present as they would be when they were sure that their remarks would not see the daylight of publicity.

The first matter taken up by the meeting was a petition from a woman asking that a relative be prevented from rushing the can as had been his wont.

This the Bulletin reporter, who was the only press representative present, was instructed to "keep out."

The next matter was a protest on the part of a certain prominent church and plantation man against the granting of a liquor license to a Japanese saloon keeper.

Again the reporter was instructed to "keep it out" by one of the members.

This was too much for Lucas. He

(Continued on Page 2)

### Wars and Rumors of Wars

We read about them in the papers and the energies of nations are directed toward precautionary measures. But we read about more local robberies than wars and rumors combined. Every man should have a little fort of his own—a safe deposit box in which to keep his valuables.

Rent 50c monthly.

### SUGAR

SAN FRANCISCO, Cal., June 18. SUGAR: 96 degree Centrifugals, 3.705 cents, or \$74.10 per ton. Previous quotation, 3.70 cents.

SAN FRANCISCO, Cal., June 19. BEETS: 88 analysis, 9s. 8 1/4-d. Parity, 4.03 cents. Previous quotation, 9s. 9d.

### U. S. Architects Plan New Federal Building

#### The Proposed

Although there are no new developments in the matter of the site for the Federal building, indications are to be observed that the United States architects are busy preparing plans for the building, no matter where it is to be located. All of the Federal departments here have been requested to send in estimates of the room they will require in the new structure and specifications as to the accommodations they will need.

This is welcome news to some of the Federal officials, who are housed in buildings and rooms little adapted for the requirements. It indicates that while local people are squabbling as to where the building is to

### Schmitz Stays Put

(Associated Press Special Cable)  
SAN FRANCISCO, Cal., June 20. Mayor Schmitz still remains in jail despite the efforts of his attorneys.

### FIGHT ON TECHNICALITY

SAN FRANCISCO, Cal., June 20. The case of Dinan and the trolley and telephone franchise cases were argued today on technicalities.

### WRECK ON FARALLONES

SAN FRANCISCO, Cal., June 20. The schooner Louis, the Gray's Harbor ship that went ashore yesterday on the Farallones, is a total loss.

### DYNAMITE DEPUTIES

ATHENS, Greece, June 20. — A dynamite cartridge was thrown into the Grecian Chamber of Deputies today. It failed to explode.

### DEAD HEAT

ASCOT, June 20.—The race for the Gold Cup resulted in a dead heat between Eider and the White Knight.

Helen M. Goughan, a well known temperance leader throughout the western states, dropped dead at her home recently from heart failure.

Missionaries from the interior of China are flocking into Hongkong for protection. A missionary named Pellar, at Chao Tung Fu, was mercilessly beaten by the Chinese and had one of his lungs pierced by a weapon. The districts of Swatow and Pakhol are exhibiting much unfriendliness toward the missionaries. Chao Tung Fu is a city of over 50,000 population and was the scene of a missionary murder some time ago.

### BY AUTHORITY

The Board of License Commissioners for the County of Oahu will hold a meeting at the Executive building on Friday, July 19th, 1907, at 4 p. m., to consider the application of Ah Choo, for a Saloon License to sell intoxicating liquors at Hecla, Oahu, under the provisions of Act 119, Session Laws of 1907.

All protests or objections against the issuance of a license under said application should be filed with the secretary of the Board not later than the time set for said hearing.

A. J. CAMPBELL,  
Secretary, Board of License Commissioners.

3723—June 20, 27; July 4, 11.

### To Build Warships

(Associated Press Special Cable)  
WASHINGTON, D. C., June 20. The bids of the Newport News and Fore River Companies for the construction of the battleships recently authorized by Congress have been accepted.

### Style, Quality Fit and Finish

count for more in shoes than in any other article of wear. Our Ever-Sticking-to-this-Principle in shoe-buying has rewarded our efforts twofold.

The accompanying illustration represents our new shade Tan Balmoral made on the easy swing HURLBERT last. Every element of Style, Quality, Fit and Finish combined with That Almost Everlasting Wear makes this shoe a forerunner of Fashion's best.

Island Orders filed to the letter—all sizes and widths.

### Manufacturers' Shoe Co., Ltd.

1051 FORT STREET. TEL. MAIN 282.

3723—June 20, 27; July 4, 11.

3723—June 20, 27; July 4, 11.

3723—June 20, 27; July 4, 11.

3723—June 20, 27; July 4, 11.

3723—June 20, 27; July 4, 11.

3723—June 20, 27; July 4, 11.

3723—June 20, 27; July 4, 11.

3723—June 20, 27; July 4, 11.

3723—June 20, 27; July 4, 11.

3723—June 20, 27; July 4, 11.

3723—June 20, 27; July 4, 11.

3723—June 20, 27; July 4, 11.

3723—June 20, 27; July 4, 11.

3723—June 20, 27; July 4, 11.

3723—June 20, 27; July 4, 11.

3723—June 20, 27; July 4, 11.

3723—June 20, 27; July 4, 11.

3723—June 20, 27; July 4, 11.

3723—June 20, 27; July 4, 11.

3723—June 20, 27; July 4, 11.

3723—June 20, 27; July 4, 11.

3723—June 20, 27; July 4, 11.

3723—June 20, 27; July 4, 11.

### There is One Typewriter

which will do good work and keep doing it

## The Remington Typewriter

SOLD BY  
Hawaiian Office Specialty Co.  
931 FORT ST.

### MASONIC TEMPLE

#### WEEKLY CALENDAR

**MONDAY**  
Leah Chapter—Regular

**TUESDAY**  
Hawaiian—Third Degree

**WEDNESDAY**  
Oceanic—First Degree

**THURSDAY**  
Honolulu Chapter—Regular—  
5 p. m.

**FRIDAY**  
Hawaiian—Second Degree

**SATURDAY**

All visiting members of the order are cordially invited to attend meetings of local lodges.

#### HARMONY LODGE, No. 3, I. O. O. F.

Meets every Monday evening at 7:30 in I. O. O. F. Hall, Fort street. E. R. HENDRY, Secretary. C. A. SIMPSON, N. G.

#### MYSTIC LODGE, No. 2, K. of P.

Meets every Tuesday evening at 7:30 o'clock in K. of P. Hall, cor. Fort and Beretania. Visiting brothers cordially invited to attend. A. S. WEBBER, C. C. F. WALDRON, K. R. S.

#### OAHU LODGE, No. 1, K. of P.

Meets every Friday evening at K. of P. Hall, cor. Fort and Beretania, at 7:30. Members of Mystic Lodge No. 2, Wm. McKinley Lodge No. 8, and visiting brothers cordially invited.

#### General Business. R. GOSLING, C. C. A. S. KENWAY, K. R. S.

#### HONOLULU LODGE 616, B. P. O. E.

Honolulu Lodge No. 616, B. P. O. E., will meet in their hall on King near Fort street every Friday evening by order of the E. R. HARRY H. SIMPSON, Sec'y.

#### F. E. RICHARDSON, E. R.

#### Wm. M'KINLEY LODGE No. 8, K. of P.

Meets every Saturday evening at 7:30 o'clock in K. of P. Hall, cor. Fort and Beretania. Visiting brothers cordially invited to attend. L. H. WOLF, C. C. E. A. JACOBSON, K. R. S.

#### HONOLULU AERIE 140, F. O. E.

Meets on the 2nd and 4th WEDNESDAY evenings of each month at 7:30 o'clock in K. of P. Hall, corner Beretania and Fort street. Visiting Eagles are invited to attend. L. E. TWOMEY, W. President. H. T. MOORE, Secy.

#### HAWAIIAN TRIBE No. 1, I. O. R. M.

Meets every first and third Thursdays of each month at Knights of Pythian Hall. Visiting brothers cordially invited to attend. E. V. TODD, Sachem. A. E. MURPHY, C. of R.

#### DAMIEN COUNCIL No. 563, Y. M. I.

Meets every second and fourth Wednesday of each month at San Antonio Hall. Visiting brothers cordially invited to attend. F. W. WEED, Pres. E. V. TODD, Secy.

### Unique Chinese Goods

Wing Wo Tai & Co.  
941 NUUANU ST.

### Steam Bread

The largest loaf and the BEST in town. White Baker.

### Vienna Bakery

PHONE MAIN 197.



**Hoffschlaeger Co., Limited,**  
King and Bethel Sts.

### The First Cup Wins You Over

No matter what coffee you now use, just try our Old Kona—you'll like it best of all. It's pure and has a rare flavor due partly to the fact that the berries are kept in storage for several years. Roasted and Ground fresh every day.  
**25c a pound**  
**HENRY MAY & CO., Ltd.**  
Whole 92—phones—22 Retail

### When You Entertain

Do you need a new supply of wines, spirits or beer? We've got just what you like best. Telephone Main 36.

### Criterion, Jobbing Dep't

### Club Stables.

IF YOU WANT A  
**Horse or Horse and Rig**  
for the Summer Vacation, call us up.  
TEL. MAIN 109.

### We Quench Thirst

Our Soda Water is well flavored, cool and refreshing.

### Honolulu Drug Co., FORT STREET.

### If You Should Wake Up And Feel Kind of Lonesome

**Victor Talking Machine** would speak to you.

### BERGSTRON MUSIC CO., LTD.

**THE BICYCLE "DOCTOR"** with the two Rights—Right Work and Right Prices.

J. E. SANTOS,  
COR. HOTEL and UNION STS.  
PHONE MAIN 361.

This Weekly Edition of the Evening Bulletin gives a complete summary of the news of the day.

### LOCAL AND GENERAL

Deposit your Contest votes before 4 p. m. today, if you wish them to be included in the next count, which will be published Friday, June 21.

Panama hats cleaned at The Globe. Low prices at the New England Bazaar.

Count Voynich returned from Kama yesterday.

Large stock of fireworks, all kinds Honolulu Candy Co.

The graduating exercises at St. Louis college came off last night.

Remember—Dance and Band Concert at Seaside on Thursday evening.

Phone Main 315, for wiring batteries, supplies, telephones and general repairing.

Makaha has been granted a divorce from Kealalaina on grounds of desertion.

Mystic Lodge, No. 2, K. of P. meets tonight in K. of P. hall, Fort and Beretania streets.

Take your carriage or automobile to Hawaiian Carriage Manuf. Co. for up-to-date repairs.

Oliver Branch Rebekah Lodge No. 2, I. O. O. F., will meet in Odd Fellows Hall at 7:30 tonight.

President Dr. Akina of the Bow Wongs denies that his tongue is preparing for factional war.

The parents of Stuart B. Dunbar will arrive shortly from the Orient and remain here for a few weeks.

Benny & Co., Ltd., dealers in sewing machines, and buyers of raw material 1256 Fort St. Phone Main 485.

The finest bathing on the beach at Waikiki Inn. Accommodations, supplies and attendance absolutely first class.

There's no mistake about the right place to get wines, spirits and beer. Telephone Main 36, the Criterion Jobbing department.

Go to the Honolulu Photo Supply Co. for "Everything Photographic." You will find a fine stock of cameras and kodaks at this store.

The final accounts of Y. Ishi and K. Kawasaki, administrators of the estate of Seisuki Yashiki, have been approved by Judge Robinson.

Don't fail to examine the attractive new goods at Blom's. And remember that for this week only boys' wash suits are selling at half price.

The A Patria Portuguese school will give a benefit entertainment at San Antonio hall Saturday, June 27, at 8 p. m. There will be dancing.

There is no dead or shop-worn stock among the candles of the Alexander Young Cafe. The demand is steady and the factory supplies it daily.

Sachs' clearance sale ends on Monday. Take advantage of the big price reductions while they last; buy now. Store closes Saturday at 1 o'clock.

Mrs. Keams' received by the last mail a fine testimonial from the Congressional party which will appear in the Saturday issue of this paper.

Julia H. Atong et al, respondents in the suit brought by Carrie B. Riggs, have been given until July 1 to prepare, serve and file their pleas or answers.

Fresh on the Sierra tomorrow—the "pick" of the Coast in cherries, apricots, cauliflower, asparagus and green peas at Levy & Co. Just telephone Main 149.

Every day the candy sales at the Young Cafe are increasing. This pure, delicious, fresh candy makes friends with everyone. It's the homemade kind—that's why.

Seven normal certificates were given to that number of young ladies of the Kaulai Home this week. Mrs. Heapy entertained the girls last Friday evening at the Home.

Charles R. Hemenway has been appointed as second district magistrate of Honolulu by Chief Justice Pezar. He succeeds S. H. Derby, resigned on account of intended departure.

Antonio Alvarez, who was found guilty by Judge Whitney of selling on Sunday to Geo. Fern and Eugene De-vauchelle liquor without meals, and fined \$50 and costs, has appealed.

There was quite a gathering of townspeople at the reception given yesterday afternoon by Mrs. Gerrit Wilder in honor of Mrs. Mills. There was Hawaiian music and light refreshments.

Wong Kwai, defendant in the suit brought by the Enterprise Mill Co., Ltd., has filed a general default. He files a similar answer as defendant in the suit brought by Theo. H. Davies & Co., Ltd.

The prospectus of the first division of the projected Hamakua railroad will soon be issued by B. F. Dillingham. It will be of standard gauge and is expected to cost between \$35,000 and \$45,000 per mile.

The Coyne Furniture Co., Ltd., are going to move to the Young building about July 1st. They will have two large stores to show a big new stock of furniture. You should see this stock, the prices will be right.

Passengers departing per S. S. Sterna. We check baggage at your hotel and home through to San Francisco. No extra charge or delay on wharf. We personally attend to every detail. Ring up Main 85. Union Express Co., No. 63 Queen street.

At the Bar Association dinner tomorrow evening Judge S. B. Dole will respond for the President of the United States, Justice A. A. Wilder for the Bench and Judge H. E. Cooper for the Bar. Hon. F. M. Hatch will deal with "Reminiscences."

There will be special orchestra rehearsals of the Honolulu Symphony Society, Thursday and Friday evenings of this week, at 8 o'clock sharp, for the coming concert which is to be given on Monday evening, June 24, at Bishop Hall, Oahu College.

All preparations have been completed for the reception of the Portuguese immigrants that are expected on the Kumerie, due about Sunday. E. R. Stackable will arrive on the Sierra tomorrow accompanied by a representative of Commerce and Labor.

A local Japanese paper recites the story that four hundred tickets have been issued to Japanese for passage on the Kumerie, and that 800 other Japs have signified their willingness to depart by depositing an amount of \$10 each on tickets to be paid for later.



### "TWO WAYS OF LOOKING AT IT."

Both are wrong; about fourteen inches is the average distance at which perfect eyes read most easily.

Holding book or paper differently is apt to mean eye-strain; may mean a defect of focus or weak muscles; may mean grave harm later on.

"A stitch in time saves"—application slightly changed, but you know the import, and eyes are more important than stitches.

**A. N. SANFORD,**  
GRADUATE OPTICIAN  
BOSTON BUILDING, FORT STREET  
Over May & Co.

### The King Of Typewriters

is the Smith Premier. It's the strongest, most reliable, easiest-running machine made. And in a very short time you can learn to operate one.

In every way you'll be thoroughly satisfied with a **SMITH PREMIER.**

**Hawaiian News Co., Ltd.**

### Tuck's Comic Postals

The funny things from Puck and Punch. Brasses, Pottery, Tappas.

**HAWAII & SOUTH SEAS CURIO CO.**  
Alexander Young Building

"For Rent" cards for sale at the Bulletin office.

**H. CULMAN,**  
The Leading Manufacturer of  
**Hawaiian Curios & Jewelry**

THERE IS ALWAYS SOMETHING NEW TO BE SEEN AT

**H. Culman,** 1064 Fort St.

**FROM CASTLE to COTTAGE**

The favorite is Electric Light. All classes of people believe in getting the greatest amount of happiness possible out of this life. And from the modern point of view home-life can be neither happy nor comfortable without Electric Light.

We wish you would telephone us for full particulars about wiring your house.

**Hawaiian Electric Co., Ltd.**  
KING ST. NR. ALAKEA. PHONE MAIN 390.

HONOLULU, T. H., June 15th, 1907.

Messrs. BISHOP & COMPANY,  
General Agents for Metropolitan Casualty Insurance Co., Honolulu, T. H.

Dear Sirs:—Yesterday the plate glass in one of the windows on the King Street side of our new building was cracked, and as the same was insured with your Company our foreman informed us immediately. We take pleasure in stating that already this morning said cracked glass has been replaced by a new plate, and we take this opportunity to express to you our satisfaction at the prompt way in which you have attended to this matter.

Yours very truly,  
(Sgd.) **THE McCANDLESS: BUILDING COMPANY, LIMITED.**  
By its President: J. A. McCANDLESS.

**BISHOP & COMPANY, INSURANCE DEPARTMENT.**  
General Agents of the Metropolitan Casualty Insurance Co. of New York.

**DON'T CRY**

OVER SPILT MILK.  
If your wall paper doesn't harmonize with your other home appointments, have us tell you how to make it right.

**S. STEPHENSON,**  
PAINTER AND PAPERHANGER.  
PHONE 426 MAIN.  
THEY SPEAK FOR THEMSELVES—S-S-SIGNS

**THE ALEXANDER YOUNG HOTEL LAUNDRY**

cleans without destroying and repairs without charging.

We are the agents. Telephone us and we will call for and deliver your clothing. Ask for a printed price list.

**Honolulu Clothes Cleaning Co.**  
J. F. COLBURN III, Manager. PHONE MAIN 147

### CABLE NEWS

Additional Cable News on Page 1.

#### WILL INVESTIGATE MONOPOLY PLAN

Washington, June 19.—The Interstate Commerce Commission will investigate a combination of the railroad interests with the Hamburg-American steamship company, whereby a monopoly of the freight traffic between America and Europe has been given that line.

#### WARSHIP COMES FOR FUSHIMI

Victoria, British Columbia, June 19.—The armored cruiser Monmouth has arrived here to carry Prince Fushimi and his suite back to Japan.

Prince Fushimi, as a representative of the Royal family of Japan, has been making a tour of the world. The Monmouth is a British vessel, and has been expressly ordered by King Edward to convey the prince back to his native land.

#### ENDORSE ROOSEVELT

Louisville, Kentucky, June 19.—The Republicans in convention here have passed a resolution endorsing the policy of President Roosevelt. Their nomination for Governor was given to A. E. Wilson.

#### FATALITIES OF FLOOD

Athens, June 19.—One hundred people have been drowned in the floods now raging in Thessaly.

#### CHINESE DISTRUST JAPAN

Shanghai, June 19.—The feeling of distrust against Japan is growing here

#### LICENSE SESSION SECRET

(Continued from Page 1)

said plainly that he did not see why the Board should want to have this protest kept out of the papers, especially as it was bound to come out anyhow when the time for the hearing of the granting of the license in question came. Furthermore, Lucas thought that in this case the publishing of the protest would be a good thing, as it came from a man who was respected by a great many people who would like to know what he had to say on the subject.

Lucas told the rest of the Commissioners that he had been on the Board of Supervisors for a year and a half and that body had never resorted to star-chamber methods. The license board was a public body as much as the Board of Supervisors was, and the public had a right to know what it was doing.

Ballentine did not see that there could be any harm in having the protest in question published, but, on the other hand, he could see that there might be some matters which should not be published. This attitude was taken by the majority of the members. Lucas still fought manfully for publicity, telling the supporters of the proposition to keep out the protest; that in such case they might as well move to have executive sessions altogether.

In the meantime the reporter had been busily employed in taking down the remarks of the Commissioners on the subject of publicity, but this was discovered by the eagle eye of one of the Commissioners, and then the storm broke worse than ever. Several of the Commissioners insisted that it would never do to have their remarks placed before the public in their plain, unvarnished form. The majority decided as a man that a carefully expurgated version of the meetings composed by the Board itself would be about all that would be good for the public, and the reporter was gently but firmly told that in the future the meetings of the Board would be executive.

#### Secret License

During the rest of the session the Board made its final decision as to the form of the licenses, which will now be printed and distributed. In regard to restaurants it was decided that such should have no bars. Private dining rooms in these places were the subject of considerable discussion, and it was finally decided that they must be subject to the approval of the Board.

#### PLANS MOVING

(Continued from Page 1.)

and that a baseball game between two of the Junior Leagues be arranged for at that same place.

The committee has ordered over \$300 worth of fireworks, which, as it has been given very large rebates, will mean quite a large assortment. These will be used at a great display which will be given at the Capitol grounds in the evening. As a new feature the committee has ordered 500 bags of confetti which will be given to the small boys to distribute to their elders ad libitum.

The committee has called a meeting of all the sub-committees for tomorrow noon at the throne-room. At this it is expected that the committees will furnish estimates of the expenses which each is likely to incur. The officers of the several athletic clubs of the city have also been asked to attend in order that they can assist in the arrangement of the sports program.

"For Rent" cards on sale at the Bulletin office.

### SHIPPING INTELLIGENCE

TIDES.									
Time	High Tide	Low Tide	High Tide	Low Tide	High Tide	Low Tide	High Tide	Low Tide	Moon, Days and Sets
June 19	11:15	4:30	11:15	4:30	11:15	4:30	11:15	4:30	Sets
20	11:15	4:30	11:15	4:30	11:15	4:30	11:15	4:30	11 57
21	11:15	4:30	11:15	4:30	11:15	4:30	11:15	4:30	—
22	11:15	4:30	11:15	4:30	11:15	4:30	11:15	4:30	0 36
23	11:15	4:30	11:15	4:30	11:15	4:30	11:15	4:30	1 14
24	11:15	4:30	11:15	4:30	11:15	4:30	11:15	4:30	2 36
25	11:15	4:30	11:15	4:30	11:15	4:30	11:15	4:30	3 31

First quarter of the moon June 18. Times of the tide are taken from the United States Coast and Geodetic Survey tables.

Hawaiian standard time is 10 hours 30 minutes slower than Greenwich time, being that of the meridian of 157 degrees 30 minutes. The time whistle blows at 1:30 p. m., which is the same as Greenwich, 0 hours 0 minutes. Sun and moon are for local time for the whole group.

#### ARRIVED.

Thursday, June 20.  
Smr. Claudine, Bennett, from Maui ports at 4:55 a. m., with 3105 sacks sugar, 63 sacks corn, 159 sacks potatoes, 427 sacks flour, 140 cases honey, 31 barrels bottles, 28 calves, 3 horses, 63 hogs, 98 packages hides, 158 packages sundries.  
Am. bktn. S. G. Wilder, Jackson, 14 days from San Francisco, mdse. to F. A. Schaefer & Co., Ltd.  
Smr. Helene, Nelson, from Kawaihae, 7:48 a. m.

#### DEPARTED

Wednesday, June 19.  
Smr. Nihau, Thompson, for Kilauea, 5 p. m.  
Br. smr. Inverary, Houghton, for New Caledonia, 5:15 p. m.  
Thursday, June 20.  
U. S. transport Dix, Ankers, for Seattle, 6 a. m.  
Smr. J. A. Cummins, Searle, for Waimanalo, 7 a. m.

#### SAILING TODAY.

Smr. Mikahala, Gregory, for Kaula ports, 5 p. m.

#### SAIL FRIDAY

Smr. Claudine, Bennett, for Maui ports, 5 p. m.  
P. M. S. S. Korea, Sandberg, for San Francisco, 5 p. m.

#### DUE FRIDAY

O. S. S. Sierra, Houdlette, from San Francisco, 8 a. m.  
P. M. S. S. Korea, Sandberg, from San Francisco, 8 a. m.

#### DUE SATURDAY

Br. smr. Kumerie, Baird, from Funahai via Lota Chile.  
Smr. Kinau, Freeman, from Hawaii ports, 9 a. m.

#### DUE SUNDAY.

Smr. W. G. Hall, Thompson, from Kaula ports, 5 a. m.  
Smr. Iwalani, Hitz, from Molokai ports, 4 a. m.

#### PASSENGERS

Departing

#### PASSENGERS

Arrived

From Maui ports, per smr. Claudine, June 20.—From Hana: J. Kirkland, L. Chung, From Kahului: D. H. Davis and wife, Mrs. Brede, Mrs. Mountcastle, Miss Kealoha and niece, J. Lightfoot, M. McCann, Mrs. Dinegar, Miss D. Lindsay, Miss Payne, F. Hons, Wm. Wash, E. W. Russell, D. T. Carey, J. Garcia, W. G. Scott, H. Howell, Mr. Oyama, Mrs. H. Noholika, Mrs. A. M. Cook, Lieut. Webber, S. N. Lukua and wife, Mrs. J. J. Matthews. From Lahaina: Dr. Moloney, wife and child, H. Gorman, Dr. J. H. Raymond, A. J. Spitzer, W. Henning, Mr. Goten, Mr. App, I. Iliha and wife. From Hana: Mrs. Torres and 121 passengers on deck.

#### PASSENGERS

Booked

Per smr. Mikahala, today, for Kaula ports.—H. Leghorn, M. B. Fernandez, J. B. Fernandez, Miss A. Silva, Miss H. Gillins, H. Truscott, Prof. Hart, Miss L. K. Blackstad, Miss E. Edwards, Miss Mary Grate, Miss D. Grate, Miss M. Dilhelm, Miss E. Grate, Miss F. Janssen, Miss A. Miller, J. H. Coney, W. H. Coney, Miss Christian, G. M. Coney, Eddie Fountain, Helen Fountain, R. N. Oliver.

A new company has been formed to take over the management of the world-renowned Cliff House at the entrance to the Golden Gate. The place will be conducted as a general amusement resort. Suro Heights will also come under the new management.

### The Summer's Coming

calls for a change of men's wearing apparel. Our showing of cloth makes the choice of change an easy one here.

### W. W. Ahana & Co., MERCHANT TAILORS

62 King St. PHONE BLUE 2741, P. O. Box 968

# Youth of Honolulu Schools Please Friends

Friday, Saturday  
and Monday  
Last Days of Our  
**ANNUAL  
CLEARANCE**

## SALE

Take Advantage of the  
**BIG PRICE REDUCTIONS**

A Saving on everything you buy.  
Remember we have but one  
**CLEARANCE SALE A YEAR  
SO BUY NOW**

Store Closes Saturday at 1 p.m.

N. S. Sachs Dry Goods Co., Ltd.

Leading Brands of Straight  
Genuine Kentucky Whiskies

"Old Kentucky"  
"Old Watermill"  
Bourbons and  
"Normandy Rye"

Ask your dealer for these Brands

Fine Wash Goods At  
Marvelous Prices

We invite comparison of materials and prices. Goods cannot be excelled and prices cannot be equaled elsewhere in the city. Our store is new and attractive—our goods fresh and crisp. See window display.  
DOTTED SWISS, floral designs, 15c per yd.; worth 25c.  
DIMITIES, floral designs, 12 1/2c per yd.; worth 20c.  
SATIN STRIPED ORGANDY, 20c per yd.; worth 30c.

YEE CHAN & CO., KING AND BETHEL STREETS.

Albert F. Afong,

Telephone Main 407. P. O. Box 795.  
832 FORT ST.  
STOCK AND BOND BROKER.  
MEMBER HONOLULU STOCK AND  
BOND EXCHANGE.

### Real Estate

ALWAYS THE LATEST IN  
MILLINERY  
AT  
Miss Power's  
MILLINERY PARLORS  
BOSTON BLDG., FORT STREET.

THE  
**JCARLO  
PAWNC<sup>o</sup>**  
FORT ST. OVER CONVENT

NOW IS THE TIME TO LEARN

### TO SWIM

Apply PROF. BARON,  
Hawaiian Bathhouse.

## ANNUAL CONCERT OF ST. LOUIS COLLEGE

Students Exhibit Talent  
In Drama And  
Music

Friends of the St. Louis College filled the College Hall to the limit Wednesday night when the annual concert and dramatical entertainment was given by the young men of the college. The program was well arranged to please the audience and interest the youth who took part. It was principally of musical selections and enabled the talented pupils to demonstrate the excellence of their teaching.

The St. Louis College orchestra, under the leadership of Brother Francis, is an organization which deserves more of a place in public notice than it now receives. And this applies as well to the St. Louis College choir. The solo by Master Clyde Baldwin and the duet by Master Martin Zeigler and Mr. Welsh were especially well-rendered numbers. Mr. Welsh has a very pleasing voice and the boys are particularly well favored and showed careful study and good training.

The violin solo by Master Walter Gough puts this young man in the list of coming musicians of the town. He was heartily encored and it was his due.

## PUBLIC SCHOOLS

(Continued from Page 1)

and congratulate you upon your graduation.

The program was as follows:  
10:30-11:30.

Chorus—(a) Wake to the Hunting.  
(b) Columbia..... Henry Smart

Remarks—Super. W. H. Habbitt,  
Spring Morning..... J. Raff

Glee Club  
Address—Mrs. Mills, principal Mills

Address—G. W. Smith,  
Solo—Miss Eliza Kahole.

Presentation of Diplomas—Principal  
Edgar Wood.

Chorus—(a) Fare Thee Well, Be-  
loved Homeland..... Kjerulf  
(b) The Pilgrim's Chorus.....

Richard Wagner  
Among those present were Super-  
intendent of Public Instruction Bab-

bit, School Inspector Baldwin, Edu-  
cation Commissioner Hutchins, Fred  
Waterhouse, Mrs. B. E. Dillingham,  
Mrs. W. F. Frear, Mrs. W. L. Whit-

ney, Prof. J. Q. Wood, Miss Ida M.  
Pope, Mr. and Mrs. Goo Kim, Chi-  
nese Consul and Mrs. Chang Tso Fan,  
Dr. Emerson, Mr. and Mrs. Andrews,  
Mrs. Treadway, Mrs. Choek Hoy, Mrs.  
Habbitt, Frank Damon, Rev. Gulick  
and Mrs. Gulick, Rev. A. V. Soares,  
Mrs. A. T. Atkinson, Acting Govern-  
or Atkinson, and several others.

At the close of the exercises Miss  
May Paty mounted the platform and  
presented Principal Wood with a key  
chain made by the A Class of 1907.  
Miss Paty in a few well-chosen words  
thanked Professor Wood for the many  
kindnesses shown them during the  
school year.

The graduates who received diplo-  
mas were the Misses May Paty, Rio  
Soares, Jessie Shaw, Juliette Cooke,  
Gladys Ridselt, Ella Goo Kim, May  
Peck, Marion Hastings and Marjory  
Freetb.

The following graduates received  
certificates: Mary Johnson, Emily  
Kaohi, Nora Keawe, John Medeiros,  
Emma Pophowski, John Brown, Em-  
ma Louie, Keahi Nalina, Helen Ka-  
wainoa, Kalai Waiwai, Edna Akana,  
Mani Anjo, James Awal, Mani Dias,  
Kahanaani Hala, Emma Hall, Edith  
Hall and Hilda Johnson.

**THE RIVAL QUEENS**  
TONIGHT  
**AT HIGH SCHOOL**

The closing exercises of the 5th and  
6th grades of the Central Grammar  
School will take place this evening at  
7:30 o'clock at the High School. The  
exercises will be in the form of a play,  
"The Rival Queens," which, it is said  
on excellent authority, will be quite an  
unusual treat in the line of amateur  
theatricals. The synopsis of the play

is as follows:  
**THE RIVAL QUEENS.**  
(Words by Camille Lies.) (Music  
by Chas. H. McCurrie.)  
Act I—Fairies' Bower.  
Prince Leon becoming separated  
from his companions while hunting,  
falls asleep in the Fairies' Bower. He  
is discovered by Nightshade once an  
attendant of Queen Rose, but being  
banished for bad conduct, becomes  
Queen of the Goblins. Nightshade  
falls in love with the Prince, and  
weaves a magic spell to place him in  
her power, but Telfa, page to Queen  
Rose, enters and destroys the charm.  
Nightshade strikes him with her wand  
and leaves him insensible. Leon,  
awaking, sees Telfa, gives him wine  
and revives him. Telfa conceals the  
Prince where he may view the fairies  
at their revels. Entrance of Queen  
Rose and Fairies.  
Act II—Goblin's Hall.  
Queen Nightshade on throne. Gob-  
lins enter. Queen Rose is captured.  
Nightshade departs. Telfa, Rose's  
page, appears, pretending friendship.  
A merry revel follows. Telfa drugs  
the wine and goblins fall asleep. Esch-  
scholtzia appearing, dances a mystic  
dance, killing the goblins into deeper  
slumber.  
Queen Rose and Telfa escape.  
Act III—Fairies' Bower.  
Prince wanders through forest.  
Nightshade enters and endeavors to  
persuade him to forget Queen Rose.  
Leon vows constancy to Fairy Queen.  
Nightshade renders him helpless with  
a touch of her magic wand. Telfa  
again breaks the charm. Huntsman  
enter, singing. Rose enters disguised  
as a gypsy. Tells Leon's fortune.  
Nightshade once more pleads with  
Leon. Gypsy throws off disguise, ap-  
pearing as Rose, and accepts Prince  
Leon.  
Finale—"Thou Hast Returned Be-  
loved Queen."

CAST.  
Rose—Queen of Fairies..... Rina Nelper  
Nightshade, Queen of Goblins.....  
Mary Dias  
Leon, a Mortal Prince..... Harold Nott  
Telfa, an Elf, Page to Rose.....  
Joseph Nicholas  
Maid of Honor to Rose.....  
Psyche Berry, Violet Lucia  
Butterfly Pages to Rose..... Albert  
Bush, Leo Madeira, William Nob-  
litt, Henry Bunt,  
Cupid..... Florence White  
Lords.....  
Charles Dowson and Alex. Young  
Pages to Nightshade.....  
Luther Hough, Shirley Bunt  
Stumble Jumble, leader of Goblins.....  
Thekla Murphy  
Musical Director—Mrs. J. W. Yarn-  
ley.

**PRACTICAL WORK  
AT NORMAL SCHOOL**

The Normal training school work  
was done by all the classes this morn-  
ing and the products were spread on  
the tables especially set.

The following shows what took place  
in classes this morning:  
General Work..... Miss Daisy Cook  
Grade II (A)..... Miss Frech  
Nature Study.....  
Grade I (B)..... Mrs. Wood  
Grade II..... Miss C. Steward  
Geography.....  
Grade II (B)..... Miss Rose Peck  
Grades V, VI..... Miss Douglas  
Story Work.....  
Grade I (A)..... Miss May Kluge  
Grade IV..... Miss K. Mousarrat  
Grade VIII..... Mrs. Bridgewater  
**NORMAL SCHOOL.**  
Expression Work..... Mrs. L. G. Marshall  
Method in Literature.....  
Miss Melbet Douce  
History (elementary).....  
Miss I. G. MacDonell  
Cooking..... Miss Martin Hall  
Wood Work..... Mr. W. T. Pope

**FOR RENT**  
Furnished cottage, 2 bedr., at Ma-  
nona Valley, nr. car line. Outside  
bathing. Only \$15 n. m.

**FOR SALE**  
Several good building lots at Ma-  
nona Valley at a bargain.

P. E. R. Strauch

Waity Bldg., Room 1, 74 S. King St.

One of the prettiest numbers was  
the drill and song by the boys of a  
select class. They were attired in  
white with colored sashes and after  
a march and song went through a sil-  
ent caesthletic drill, while varied-  
colored lights were thrown on the  
stage. It was very pretty and car-  
ried out with soldier-like precision.

The St. Louis College Alumni  
choir was encored at each appear-  
ance. It will be unfortunate if this  
organization is not heard in other  
musical events. William Ellis' bar-  
itone solo was well rendered and ap-  
preciated.

The drama entitled "The Invisible  
Hand" was an easy three-act play  
which pointed a moral and was well  
within the capacity and understand-  
ing of the students of the College.  
The audience enjoyed it and the  
parts were carried without a break.  
The cast of characters were:  
Edward Dancourt, a young painter  
..... J. Dan Neal  
Theophilus Gautier, a lawyer.....  
Jan. K. Jarrett  
Mr. Merinville, a merchant.....  
Fred. C. Mauge  
Charles Merinville, his son.....  
Emil Johnson  
Baptist, their servant..... Jas. Achong  
Lougout, porter at Edward's lodg-  
ings..... Chris Holt  
Juliani, a picture dealer.....  
Albert Christian  
Members of the Choir—Soprano:  
C. Baldwin, W. Bryant, S. Carey, T.  
Cunningham, E. Dwyer, E. Foun-  
tain, J. Kakaia, L. Kalelopa, S.  
Kekamani, G. Machado, A. Mark-  
ham, J. Nunes, W. Nunes, C. Oids,  
G. Oto, S. Quadros, R. Quinn, C. Ra-  
w-lins, G. Sims, W. Zeigler. Alto: W.  
Archa, E. Austin, F. Ayau, A. Bap-  
tist, D. Branco, F. Christian, H. Fas-

both, A. Fernandez, J. Fernandez, I.  
Fernandez, J. H. W. Inman, E. Ka-  
upu, L. Lead, J. Medeiros, G. Mills,  
J. Pimento, F. Singer, K. Smith, S.  
Smith, L. Sterling, J. Vincent. Ten-  
or: L. Akana, A. Akina, M. Fas-  
recht, W. Fausoth, A. Gomez, D. Hou-  
pili, W. Hoopai, J. Jarrett, R. Kaha-  
lani, J. Kaulukou, F. Leandoro, P.  
Maage, M. Mendonza, R. Steward, A.  
Thevein. Bass: S. Achong, C.  
Ayau, J. Bettencourt, A. de la Nux,  
H. English, W. Espinda, H. Gilman,  
W. Gough, N. Kallhenni, D. Neal, T.  
Pedro, J. Peter, K. Tallett, J. West-  
brook, F. Wood.

## KAULUWELA CHILDREN GIVE ELABORATE CLOSING DAY PROGRAM

Following is the program of the  
closing exercises of the Kauluwela  
school, Miss Green, principal:

Recitation—Welcome..... Kiki  
Song—Flowers..... Rooms 5 and 6  
Recitation—Welcome..... Room 3  
..... Alice Kanoa and Joe Kapua  
Song—The Carpenter..... Room 3  
Dialogue—The Doctor.....  
..... Rosie Perry and Peter  
Song—Spring Blids..... Room 4  
Recitation—The Metals..... Bung  
..... Tim, Ah Shin, Sai Ki, and Ah Chan  
Dialogue—Jack and Jill, Julia and Sam  
Recitation—Going to Market.....  
..... Chung Neo  
Song—The Fisher Boy.....  
..... Rooms 5 and 6  
Recitation—The Elf..... Joseph Young  
Recitation—Guard Thy Tongue.....  
..... John Perkins  
..... Willie Phee and George Needham  
Songs—Smelling Song.....  
..... Receiving Room  
Baby Song.....

Exhibition and sale of lace, and cakes.  
The guests were permitted to see the  
work of every class and the kitchen es-  
pecially was crowded to its utmost ca-  
pacity. Mrs. Chang Tso Fan, wife of  
the Chinese Consul, was an interested  
spectator. She availed herself of the  
opportunity of seeing how different  
cakes were made.

The pupils in wood work were in  
charge of W. T. Pope. The chairs,  
tables, show cases, picture frames and  
other articles, beautifully polished,  
were on exhibition. The pupils ex-  
plained to their guests how they were  
made. Many parents filled the work  
room and were greatly pleased to find  
that their daughters could at some  
future date help them in domestic  
work. Those at work were Misses M.  
Johnson, Schlaemer, Soares, Ethel Leo  
Toma, Emily Kaohi and Edwin Lind-  
say.

The lace work was attractively ar-  
ranged on a long table. Some lanhala  
hats and Hawaiian pillows were es-  
pecially interesting. Mrs. Lizzie Hu,  
Miss Apana and Miss K. Broad, who  
made these Hawaiian products, were  
present and busied themselves in ex-  
plaining to their guests how and from  
what they were made.

There were many articles for sale,  
but the purchasers were few.

## KAIULANI PROGRAM

Following is the detail of the pro-  
gram to be given at Kaiulani school  
Friday:

Review of Children; O Paradise!  
Cinderella; Minnet; See Saw Song;  
Puritan Maids; Columbus; Clock Ex-  
ercise; Umbrella Drill; Wand and  
Flower Drill; Song—If It Were June;  
Trade Songs; Upside Down; Model  
Class Dialogue; Flower Drill; The  
Medley; Hawaiian Song; What's in  
My Pocket; Clubs; Hawaii; Recitation  
and Whistling; Little Patriots; Jack-  
o-Lantern; Announcement of Banner  
Days; Hawaii Poni; America; May  
Pole.

## HIGH SCHOOL ALUMNI RECEPTION

The reception of the High School  
Alumni held last evening at the school  
house was a charming affair both from  
a social and educational standpoint.  
There were some three hundred pres-  
ent.

Professor Scott opened the exercises  
with a short but most interesting talk  
on subjects of an appropriate nature  
to the occasion, dwelling on the educa-  
tional standpoints and systems as used  
in foreign countries. Professor Scott  
was followed by Secretary Atkinson,  
who read some remarks on the power  
of education and its advantages to a  
possessor in the future. He also gave  
a few statistics regarding the different  
nationalities that were receiving the  
advantages of the public school sys-  
tem in these islands.

A quartet, composed of boys from  
the class, sang, and Mrs. Macneal en-  
tertained with a solo, Miss Clark ac-  
companying on the piano.

Superintendent Habbitt gave a quite  
interesting talk on the proposed new  
school building, going into details of  
the arrangements of the different  
rooms. To the Alumni he extended the  
honor of laying the corner stone for  
the new building. The plans of the  
new school was then taken up on the  
wall and thoroughly inspected by all  
of the pupils. All attending were then  
invited by Professor Scott to partake  
of refreshments that had been provid-  
ed.

The ladies were most beautifully  
decorated for the occasion. Fats and  
burns making a perfect beauty of the  
place.

Recitation—Suppose..... Joe Akana  
Recitation—My Shadow.....  
..... John and Willie Hoomana  
Recitation—A Riddle..... Shambry Perry  
Song—Left Foot First..... Room 2  
Recitation—The Last Day..... Tony  
Recitation—Vacation.....  
..... Emily, Annie and Deborah  
Recitation—The Daisies..... Room 6  
Dialogue—Goss, Ah Nam and Ah You  
Song—Awaku..... Rooms 5 and 6  
Recitation—The Last Day..... Ah G  
Recitation—The Zoo, Roy and Willie  
Duet—The Winds..... Rachel and Lang  
Recitation—The Candle and Star.....  
..... Sarah  
Drill.....  
Song—To the Woods Away.....  
..... Rooms 5 and 6  
Recitation—When I Am Big..... Ah Lina  
Recitation—When I'm a Woman.....  
..... Room 4  
Song—In My Garden Bed..... Room 3  
Recitation—The Best Way.....  
..... John Hoomana  
Recitation—Our Holidays..... Rooms 5 and 6  
Recitation—Learning to Whistle..... Ah Pau  
Song—Up the Hills..... Rooms 5 and 6  
Recitation—I Am Very Young..... Eddie Sumo  
Recitation—Twelve Professors..... Room 3  
Song—The Indian Boys..... Receiving room  
..... Rose Drill.  
Song—The Bird's Nest..... Room 4  
Song—See Saw..... Room 2  
Song—America.....

## FLORAL ENTERTAINMENT BY ST. ANDREW'S PRIORY

The closing exercises of St. An-  
drew's Priory were held yesterday  
afternoon on the grounds of the  
school.

The entertainment consisted of a

short sketch entitled "The Call of  
the Flowers." To the music of  
"Martha" the flowers were called to  
a convalescence at which the queen of  
them all was to be chosen. Riders  
went about the grounds calling on  
the flowers to respond, which they  
did in groups, each group represent-  
ing a different variety and singing  
the praise of the different flowers  
that they represented. The flowers  
were the polyantha golden shower,  
lilium, lilium, pinks, geranium, ginger  
and lily, as well as the male fern  
and aster.

At the close the judges pronoun-  
ced the lilium as the chosen flower, the  
heralds led Martha Lomon to the  
throne and there the girls crowned  
her with flowers.

The graduating exercises will be  
held this evening.

## CLOSING EXERCISES OF LOCAL SCHOOLS

Closing exercises of various schools  
throughout the city will be as fol-  
lows:

Grammar grades of the High  
School will hold exercises at the  
school building on Friday at 10 a.m.  
Final exercises of the High School  
will be held at K. of E. hall at 8 in  
the evening of the same day. At 8  
this evening the central grammar  
school will perform "The Rival  
Queens," before invited guests, at  
the High School.

Kauluwela School will hold exer-  
cises in the Boys' Field grand stand  
on Friday at 10:30 a.m.

Closing exercises of the Royal  
School will be held this evening.

## What Pinkham Said--Not What the Advertiser Says He Said

"This Committee will not say or believe there is no hope for  
diversified or small farming, but does assert (to quote as re-  
sponsible and directly experienced authority as exists in Hawaii)  
that it is both 'cruel' and 'criminal' to indiscriminately boom  
and urge ventures in experimental small farming by persons of  
small means dependent on prompt returns, or ventures, individu-  
ally in a small way, in growing staples that are produced in more  
favored localities on an immense scale by low cost and abundant  
labor."—L. E. Pinkham's address to Honolulu Trades and Labor  
Council, Jan. 20, '05.

## HONOLULU PHOTO SUPPLY CO.

FORT ST.  
"Everything Photographic"

## High School Sundae

Pleasant to the  
taste and as re-  
freshing as any  
thing ever passed  
over a counter.  
Cold as ice can  
make it.

## BENSON, SMITH & CO., Limited.

SCURUC  
WOMAN'S EXCHANGE  
HOTEL NEAR FORT.

## Church Bells

Small and Medium Sizes, Complete.  
A. FERNANDEZ & SON,  
Nos. 44-50 King St., Katesy Bldg., bt.  
Nuuanu & Smith Sts.; Tel. Main 189.

## BY AUTHORITY

OFFICE OF THE BOARD OF  
HEALTH.  
Honolulu, June 19, 1907.  
All outstanding bills for materials  
furnished and services rendered to  
the Board of Health, during the pe-  
riod commencing July 1st, 1905, and  
ending June 30th, 1907, must be in  
the office of the Board, properly cer-  
tified, IF ON THE ISLAND OF OAHU,  
ON OR BEFORE JULY 25,  
1907, and IF ON THE OTHER IS-  
LANDS BY JULY 15th, 1907.

L. E. PINKHAM,  
President, Board of Health.  
5125-91

## Every Day Made Happier

With a kodak or a camera.  
Photography is a pleasure of  
which one never tires. Al-  
ways something new, some-  
thing different.  
It's very easy to operate a  
kodak or a camera. Let us  
show you our complete stock  
of "Everything Photographic"

## HONOLULU PHOTO SUPPLY CO.

FORT ST.  
"Everything Photographic"

## Here Today, Gone Tomorrow

This is something on the  
order of inferior paints. It's a  
poor sort of economy which  
prompts a man to purchase a  
low grade of paint. He can  
save the most money by using  
the highest grade there is,  
namely: PURE PREPARED.

## Lewers & Cooke, LIMITED

177 S. KING ST.

## Dr. T. Uemura,

Physician and Surgeon; Specialist  
eye diseases, Office, Borentania near  
Nuuanu. Hours: 8 to 11 a. m., 7 to  
3 p. m. Telephone Main 420. Office  
King-st. Alapai; hours: 1 to 3 p. m.  
Telephone White 116.

Fine Job Printing at the Bul-  
letin Office.

EVENING BULLETIN
Published Every Day Except Sunday,
at 120 King Street, Honolulu,
T. H., by the

BULLETIN PUBLISHING CO., LTD.
WALLACE R. FARRINGTON, Editor

Entered at the Postoffice at Honolulu as second-class matter.

SUBSCRIPTION RATES.
Payable in Advance.
Evening Bulletin.
Per month, anywhere in U. S. \$ .75
Per quarter, anywhere in U. S. \$ 2.00
Per year, anywhere in U. S. \$ 8.00
Per year, postpaid, foreign, \$ 11.00
Weekly Bulletin.
Six months, anywhere in U. S. \$ .50
Per year, anywhere in U. S. \$ 1.00
Per year, postpaid, foreign, \$ 2.00

Territory of Hawaii, )
Honolulu, ) ss:
First Judicial Circuit.)

C. G. BOCKUS, Business Manager
of the Bulletin Publishing Company,
Limited, being first duly sworn, on
oath deposes and says: That the fol-
lowing is a true and correct state-
ment of the circulation for the week
ending Friday, June 14, 1907, of
the Daily and Weekly Editions of the
Evening Bulletin:—

Circulation of Evening Bulletin
Saturday, June 8 2638
Monday, June 10 2442
Tuesday, June 11 2442
Wednesday, June 12 2468
Thursday, June 13 2448
Friday, June 14 2435

Average daily circulation 2456
Circulation of Weekly Bulletin
Tuesday, June 11, 1907 2788
Number of weeklies delivered on
Island of Hawaii alone 1242
Combined guaranteed average
circulation 5274

BULLETIN PUBLISHING CO., LTD.,
by C. G. BOCKUS,
Business Manager.
Subscribed and sworn to be-
fore me this 15th day of
JUNE, Anno Domini, 1907
P. H. BURNETTE,
Notary Public, First Judicial Circuit.

THURSDAY, JUNE 20, 1907.

Mayor Schmitz's fight for position
does not change his place as first on
the list of Mayors without honor.

Combination of the hotels is an in-
cident. What Honolulu needs is
tourists, and to get them it must
have steamships.

These boys—possibly the girls—
leaving school this year will soon be
voters. If you will take the trouble
to visit a school or two, it will allay
fears for the future.

Hilo may soon add "wild and woolly"
to its list of titles. But in any
event it cannot lose its reputation as
the greatest horse-race town of the
Pacific, on the Fourth.

Only those on the inside seem able
to take Governorship talk seriously.
Outsiders sit by as dutiful subjects
and wonder what will come next in
the procession of viceroys.

Compare the number of parents
taking an interest in the public
schools with that of ten or twenty
years ago. And then ask yourself
whether conditions are not improv-
ing in Hawaii.

Hawaii is apparently on the verge
of being presented with a viceroy.
It would promote Americanism
among our alien hordes if a Governor
were appointed in whose selection the
people had some voice.

In order to prove what Pinkham
has said, his morning adversary
quotes what it has published about
him. Why this should be done is in
the same class with the reason for
Japanese jumping off the cars back-
wards.

It is about time the respectable
Japanese of Hawaii made themselves
felt. Loudest spokesmen thus far
have been of the agitator type who
curse their own officials and natu-
rally have little respect for those of
any other country.

What outbursts of enthusiasm
come from the people of Hawaii as
the array of gubernatorial timber
under Presidential advisement is
trotted before the breathless popu-
lace! Not even a manufactured
cheer has split the atmosphere of hut
or palace.

Excursions to Hawaii are all right.
It should be noticed that these are
depending on ability to get the
steamers. Now is it not the part of
good judgment for business men of
Honolulu to be up and doing in or-
der that they may be assured of am-
ple steamship accommodation for the
regular service?

It is a credit to Hawaii that there
should be and is a general feeling of
disgust that the Governorship of this
Territory should be put on the basis
of a vicereignty, to be parcelled out
according to the desire of one or two
individuals, while the people look on
as a dutiful and abject subjects. The
whole proposition is un-American
and wrong. And if, by good luck,
Hawaii secures under this method a
man capable of making the most of
the position for Hawaii—it will be a
great case of luck.

TRENT AND COMPANY

Own a Home

If you can afford to pay rent
you can afford to buy a
home. Did you ever esti-
mate the cost of renting, to-
gether with what your occa-
sional moving bills were,
with also the wear and tear
on your furniture? Better
get wise and buy. Now is
the best time while prop-
erty may be had at a bargain.
Call and inquire

TRENT & CO.

SCHOOLS MOULD THE FUTURE.

Any person overwhelmed with du-
lous thoughts for the future of this
Territory will find a first-class tonic
in a visit to one or more of the clos-
ing exercises of the public or private
schools.

The future of any community is
in the hands of its men and women
of character and intelligence, and
these schools are turning out prod-
ucts in this line which will place the
Hawaii of ten or twenty years hence
so far ahead of its present condition
that the pessimist certainly will
wonder why he worried.

The educators are usually divided
into two classes: Those who believe
that the education given is only a
smattering and does not go deep
enough. And others satisfied in their
own mind that schooling of any sort
causes the youth to lose respect for
honest toil.

Each can cite instances to prove
his contention. But it is still true
that every class sent out from the
schools of these islands is an added
source of strength to the moral, social
and industrial development of the
body politic.

If pupils have learned nothing
more than to read and speak the
American language and revere the
flag of their country, they have by
this alone increased the force which
will constantly operate to sustain
higher standards in public and
private life. It is well to remember that
when the population of Hawaii has
reached the point where the citizens
can make themselves understood in a
common language, a long step has
been taken towards unity of action
inspired by common ideals.

The schools are, however, doing
more than this. The number of pu-
pils who advance through the High
School grades is constantly increas-
ing, and the opportunities will very
soon include college courses that will
equip men and women for higher
practical work in life.

As opportunity improves, the edu-
cational trend has steadily been to
impress upon the youth the dignity
of manual labor. The "white-shirt"
professions are not having a monopoly
of the educator's attention. In
fact the teacher of today is making
a feature of the fact that no person
is more to be envied than the man
who works in the field and shop.
And he is remembered that the les-
sons which are taught in the schools
today will be the basis of action in
public and private life among the
men and women of tomorrow.

The hope of America is in its pub-
lic schools. They have never failed.
And Hawaii is justified in depending
on them to do here what has been
done on the mainland—and more.



Real Estate Den't.

FOR RENT
Lunalilo St. \$30.
Lunalilo St. \$27.50
Fonsacola Street \$25.
Beretania Street \$35.
Wilder Avenue \$40.
Thurston Avenue \$35.
Nuuanu Avenue \$15.
Nuuanu Avenue \$50.
King St. \$25.
Waikiki \$40.
College Hills \$25.
Young St. \$20.

FURNISHED:
Young St. \$30.
Waikiki \$75.

FOR SALE:
Punchbowl district, two-story
house, 4 bedrooms, parlor,
dining room, etc., serv-
ants' quarters and fern
house \$4,000.
Henry Waterhouse Trust Co., Ltd.,
Corner Fort and Merchant Sts.

Wise One Picks Jack
For Next Governor

There doesn't seem to be any use in
trying to settle that matter of the
vicereignty. It won't stay settled.
There is a new story to the front to-
day—and the present Acting Governor
is the central figure in it. According
to the private lunch of one of the
Wise Ones, A. L. C. Atkinson, Sec-
retary of the Territory and present Act-
ing Governor thereof, has his traps all
packed ready to move into the Roblin's
Egg Blue Chamber as soon as the of-
ficial notification, of which he has ad-
vanced information, arrives stating that
he has been selected by the President
to preside over the destinies of the
Territory of Hawaii for the four years
to come. The Wise One says that if
anyone thinks that Jack is out of it,
he needs to change his brand of dope
and strike a fresh light. Jack is the
Man and don't you forget it.

Certain it is that Atkinson has been
going around all day with a particu-
larly happy smile on his handsome
countenance, while in his eyes has been
a dreamy, far-away look, as if he saw
stretching down the future before him
long vistas of power and glory. And
he has been holding whispered confer-
ences with such men as—well, never
mind. He hasn't made any official an-
nouncement yet of his cabinet.

But that, says the Wise One, does
not mean that he has not selected the
cabinet. The Wise One even goes so
far as to outline the membership of the
distinguished body of men who will
assemble around the long table in the
Roblin's Egg Blue and help the Viceroy
plan his policy and aid him in gov-
erning the province of Hawaii.

And this is the way the tale is to
run, the Wise One says:
The Secretary of the Territory is to
be C. R. Buckland, editor of Trans-
Pacific Trade, editor-elect of the Hilo
Herald, correspondent of various Coast
papers, and General Job Assimilator.
His commission is already made out,
and he has given up his intention of
removing to Hilo. The price of real
estate in that burg is therefore due to
take a tumble.

Arthur M. Brown will be offered the
portfolio of Attorney General to suc-
ceed the present incumbent, E. C. Pet-
ers. J. A. Gilman will resign as a
member of the Board of Liquor Com-
missioners and move over into the of-
fice of the Land Commissioner, Charlie
Chillingworth will replace High Sher-
iff Henry.

The Wise One's pipe went out for a
minute, but the reporter gave him an-
other match, and after he had got it
going again and had puffed thought-
fully for a while, he resumed the story.
There is only one man for Superin-
tendent of Education, Walter G.
Smith will be offered the position now
held by Babbitt W. P. Roth, of the
First National Bank, will be the
financial man of the government, vice
Treasurer Campbell.

It is possible that Frear, in disap-
pointment and disgust, may resign the
Chief Justiceship, in which case Judge
Dole, whose term comes to a close
soon, will be made Chief Justice, with
a salary of \$500 a year more than
he gets now, and R. W. Breckons will
become U. S. District Judge.

"What about the Superintendent of
Public Works," asked the reporter.
The Wise One puffed thoughtfully
for a minute. "Geo. W. Smith," he
remarked sententiously.

"But what," again inquired the re-

WE ARE NOW CARRYING THE
LARGEST AND BEST ASSORT-
ED LINE OF

Rugs,
Portieres,
Lace Curtains,
Couch Covers,

Table Covers

AND
Table Covers

that has ever been shown here.
If you are thinking of furnishing
your house anew, you will do well
to see this line before buying.

EHLERS
Good Goods

PURE
JERSEY CREAM
From our own Ranch
Near Hilo is used
at our Soda Fountain
BASEBALLS, GOLF BALLS
AND SPORTING GOODS.
WALL, NICHOLS CO., Ltd

Hustace said there were a number
of pieces of land in that vicinity which
should be condemned. The matter was
referred to the County Attorney.

Captain O'Neil wrote that he would
not need the crusher for the use of
which he asked some time ago, as he
had now made other arrangements and
would not need it.

Owners of property at Luakaha on
the old pull road asked that that thor-
oughfare be repaired and macadamized.
Hustace said P. C. Jones had spoken to
him about the matter, and he had told
him that this matter must take its
turn. Sam Johnson said that Lord &
Beiser were to fix that road.

The County Mission asked for per-
mission to buy from the Road Depart-
ment 20 cubic yards to be used at its
reservoir at Wallele. Referred to the
Road Committee.

Residents of Emma and Alakea
streets complained of the dust nu-
isance. They wanted these streets oiled.
Hustace said the county was not in a
position to oil roads merely to keep
the dust down.

Engineer Donahue of the Koolau De-
velopment Co. asked for permission to
take the now famous traction engine
across to Koolau. He promised to
have all precautions taken.

Hustace said the company must
guarantee to pay for all damage done
by the engine. This was agreeable to
Donahue.

Archer said the Board had no right
to stop any vehicle from using the pub-
lic roads whether it were a traction en-
gine or a wheelbarrow.

F. S. Dodge of the Bishop Estate
asked for the use of the oil sprinkling
cart for the oiling of some of the Ka-
nehameha School roads.

The following bills were ordered
paid:
May—
Police Department, \$866.87.
Road tax, Waiakua, \$3.24.
Road tax, Honolulu, \$6.55.
Road Tax, Waiakua, \$1.14.
Road tax, Ewa, .90.
Koolauloa Road District, special,
\$210.95.
Road Department, special, \$26.15.
Road Department, special, \$266.26.
Road Department, special, \$2986.11.
Garbage department, \$172.84.
Electric Light Department, \$9.
Police and Fire Alarm System, \$2.50.
Waiakua Road District, .75.

June—
Road Department, \$2946.32.
Garbage Department, \$539.50.
Coroner's fees, \$48.
Detective expense, \$70.50.

The meeting ended up with a dis-
agreement regarding a payroll of \$206
for macadamizing a road through High
Sheriff Henry's property in Koolau,
which Harvey wanted paid. Hustace
explained that no member of the Board
had ordered the work done, and al-
though it had been under way for two
months no report on it had been made.
Hustace put his foot down strongly
against the payment of this or any
other unauthorized bill.

Harvey tried to persuade Hustace to
have the County Engineer report on
the work done, and to have payment
made according to his report, but still
Hustace was immovable. Harvey then
moved to pay the bill. It took him
some time to find a second, but finally
Fera came to his aid.

Hustace then ruled that as the Board
had no right to pay the bill the motion
was out of order. Harvey and Fera
protested against this ruling, but Hus-
tace refused point blank to put the mo-
tion, and this was the end of the mat-
ter.

BAND CONCERT

A public moonlight concert will be
given by the Hawaiian band, at the
Seaside Hotel at 7:30 this evening,
when the following program will be
rendered:
PART I.
March—"The Charlatan"..... Sousa
Overture—"Juanita"..... Supple
Ballad—"Coon and Moon"..... Fisher
Selection—"L'Albino"..... Apolloni

Vocal—Hawaiian Songs, ar. by Berger
Selection—"My Old Kentucky Home"
..... Dalby
Waltz—"Vienna Blood"..... Strauss
Finale—"El Capitan"..... Sousa
"The Star Spangled Banner."

HONOLULU WEATHER

June 20.
Temperatures—6 a. m., 72; 8 a. m.,
78; 10 a. m., 78; noon, 78; morning
minimum, 72.
Barometer, 8 a. m., 30.04; absolute
humidity, 8 a. m., 7.502 grains per
cubic foot; relative humidity, 8 a. m.,
73 per cent; dew point, 8 a. m., 64.
Wind—6 a. m., velocity 2, direction
N. E.; 8 a. m., velocity 5, direction S.;
10 a. m., velocity 9, direction S.; noon,
velocity 15, direction S.
Rainfall during 24 hours ended 8 a.
m., .00 inch.
Total wind movement during 24
hours ended at noon, 157 miles.
WM. B. STOCKMAN,
Section Director, U. S. Weather Bureau.

The Sierra Will Bring Us Tomorrow
The "Pick" of the Coast In

Cherries
Apricots
Cauliflower
Asparagus
Green Peas

Just Phone Main 149
J. M. LEVY & CO.,
FAMILY GROCERS,
Waity Block Next Met Meat Co.

CREAM PURE RYE
THE
WHISKEY

AMERICA'S FINEST PRODUCTION
Rich and Mellow

LOVEJOY & CO., Agents
IMPORTERS AND DEALERS IN FINE WINES & LIQUORS.
502-904 NUUANU STREET. PHONE MAIN 308.

WE HAVE COME TO STAY

Demand is the only true
index of Popularity. The
L. C. SMITH &
BROS. Typewriter
Solicits Judgment by
this rule.



Writing Visible At All Times.
With more than double the daily output of any other typewriter
concern, at the same period of its growth, L. C. Smith & Bros. Typewriter
Co. has been utterly unable to keep pace with the demand.
Why?
Because users, who appreciate its advantages of speed, easy opera-
tion and lasting service, would rather wait their turn for the L. C.
SMITH & BROS. typewriter than buy of makers who have no difficulty
in filling orders.
C. W. MACFARLANE, Agt.
MAIN 145

ROYAL HAWAIIAN
NOW UNDER YOUNG

Alexander Young admits that he has
bought the top interest of the Royal
Hawaiian hotel and such being the fact
it places the control of all of Hon-
olulu's hotels in his hands. The Sea-
side is the only hotel outside of the
combine now.
Mr. Young says that there will be
no change in the management or the
running of the Hawaiian.
Jockey Fisher has been suspended
by the Emeryville stewards for pho-
ny riding.

New Bathing Suits
For Men and Boys

There is no tonic in the world superior to a salt water bath. Makes
you feel like a new man. If you need a bathing suit, we carry the larg-
est and best stock in Honolulu. COTTON and WOOLEN SUITS and
TRUNKS for men and boys—all kinds and sizes.

M. McINERNEY, Ltd.,
HABERDASHER AND CLOTHIER. FORT AND MERCHANT STS.



# Oceanic Steamship Company TIME TABLE

The steamers of this line will arrive and leave this port as hereunder:

FROM SAN FRANCISCO:	FOR SAN FRANCISCO:
SIERRA ..... JUNE 21	SIERRA ..... JUNE 27
ALAMEDA ..... JUNE 23	ALAMEDA ..... JULY 3

In connection with the sailing of the above steamers, the agents are prepared to issue to intending passengers, coupon through tickets, by any railroad from San Francisco to all points in the United States, and from New York by any steamship line to all European ports.

FOR FURTHER PARTICULARS APPLY TO

**Wm. G. Irwin & Co., Ltd**  
OCEANIC S. S. CO., GENERAL AGENTS.

## Pacific Mail Steamship Co. Occidental and Oriental Steamship Co., and Toyo Kisen Kaisha

Steamers of the above companies will call at Honolulu and leave this port on or about the dates below mentioned:

FOR JAPAN AND CHINA:	FOR SAN FRANCISCO:
COPTIC ..... JUNE 25	KOREA ..... JUNE 26
HONGKONG MARU ..... JULY 5	AMERICA MARU ..... JULY 2
* Call at Manila.	SIBERIA ..... JULY 9

## H. Hackfeld & Co., Ltd., Agents

### AMERICAN-HAWAIIAN S. S. CO

Direct Service between New York and Hawaiian Islands, Via Pacific

From Honolulu to San Francisco  
S.S. "NEVADAN" direct ..... JUNE 11

From San Francisco to Honolulu  
S.S. "NEVADAN" to sail direct ..... JUNE 28  
Freight received at Company's Wharf, Greenwch St., and each month thereafter.

From Seattle and Tacoma to Honolulu  
S.S. "ARIZONAN" to sail direct about ..... JUNE 25

FOR FURTHER INFORMATION APPLY AT  
**C. P. MORSE, H. Hackfeld & Co., Lt**  
GENERAL FREIGHT AGENT. AGENTS, HONOLULU.

### Canadian-Australian Royal Mail Steamship Company.

Steamers of the above line, running in connection with the CANADIAN PACIFIC RAILWAY CO. between Vancouver, B. C., and Sydney, N. S. W., and calling at Victoria, B. C., Honolulu and Suva, Fiji, and Brisbane, are DUE AT HONOLULU on or about the dates below stated, viz:

From Vancouver and Victoria, B. C. (For Brisbane and Sydney)	From Sydney and Brisbane, (For Victoria and Vancouver, B. C.)
AORANGI ..... JUNE 29	MOWERA ..... JUNE 26

Through Tickets issued from Honolulu to Canada, United States and Europe. For Freight and Passage and all general information, apply to  
**Theo. H. Davies & Co., Ltd. General Agents.**

## Matson Navigation Company

Passenger steamers of this line will arrive and leave this port on about the following dates:

FROM SAN FRANCISCO:	FOR SAN FRANCISCO:
SATURDAY ..... JULY 6	THURSDAY ..... JULY 11
SATURDAY ..... AUG. 3	THURSDAY ..... AUG. 8
SATURDAY ..... AUG. 31	THURSDAY ..... SEPT. 5

Passenger rates: First Class, \$60.; Steerage, \$25.  
For further particulars apply to  
**WM. G. IRWIN & CO., LTD., Agents.**

J. F. Morgan, President; C. J. Campbell, Vice President; J. L. McLean, Secretary; A. F. Clark, Treasurer; N. E. Gedge, Auditor; Frank Hustace, Manager.

## Hustace Peck Co., Ltd. DRAYMEN, 63 QUEEN ST.

DEALERS IN  
**Firewood, Stove and Steam Coal.**  
ALSO WHITE AND BLACK SAND. TELEPHONE MAIN 295.

## PACIFIC TRANSFER CO.

WILL CALL FOR YOUR BAGGAGE

We pack, haul and ship your goods and save you money.  
Dealers in STOVE WOOD, COAL and KINDLINGS.

Storage in Brick Warehouse, 126 King St. Phone Main 58

### Fast Schooner CONCORD

Sailing for  
KAPUNA, HONGIPU, KAILUA and HOOKENA

From Sorenson's Wharf.  
Apply on Board or to  
HAWAIIAN BALLASTING CO., Agt  
Telephone Main 300, Maunakea St., 1st  
Floor King. P. O. Box 523.

**Automobiles**  
FOR RENT OR FOR SALE.  
VON HANN-YOUNG COMPANY, Ltd  
TELEPHONE MAIN 300.



## Alexander & Baldwin LIMITED.

J. P. COOKE, Manager

### Bishop & Co.

BANKERS.

Commercial and Travelers' Letters of Credit issued on the Bank of California and The London Joint Stock Bank, Ltd., London.

Correspondents for the American Express Company and Thos. Cook & Son.

Interest allowed on term and Savings Bank Deposits.

Claus Spreckels. Wm. G. Irwin.

## Claus Spreckels & Co.

BANKERS.

HONOLULU, : : : T. H.

San Francisco Agents — The Nevada National Bank of San Francisco, Draw Exchange on the Nevada National Bank of San Francisco, London—The Union of London and Smith's Bank, Ltd., New York—American Exchange National Bank — Corn Exchange National Bank.

Paris—Credit Lyonnais. Hongkong and Yokohama — Hongkong-Shanghai Banking Corporation. New Zealand and Australia — Bank of New Zealand and Bank of Australasia.

Victoria and Vancouver — Bank of British North America. Deposits received. Loans made on approved security. Commercial and Travelers' Credits issued. Bills of Exchange bought and sold.

Collections Promptly Accounted For.

## The First AMERICAN SAVINGS AND TRUST CO.

OF HAWAII, LTD.

SUBSCRIBED CAPITAL.....\$200,000.00  
PAID UP CAPITAL.....\$100,000.00  
President.....Cecil Brown  
Vice President.....M. P. Robinson  
Cashier.....L. T. Peck

Office: Corner Fort and King Sts.  
SAVINGS DEPOSITS received and interest allowed for yearly deposits at the rate of 4 1/2 per cent. per annum. Rules and regulations furnished upon application.

## The Yokohama Specie Bank, Ltd

ESTABLISHED 1880.  
Capital Subscribed.....Yen 24,000,000  
Capital Paid Up.....Yen 21,000,000  
Reserved Fund.....Yen 13,700,000

HEAD OFFICE, YOKOHAMA.

BRANCH AGENCIES — Antung, Hsien, Hang Kow, Chefoo, Dally, Bombay, Hongkong, Honolulu, Kobe, Looyang, London, Lyons, Mukden, Nansaid, Newchwang, New York, Peking, San Francisco, Shanghai, Tientsin, Tokio, Osaka.

The bank buys and receives for collection Bills of Exchange, Issues Drafts and Letters of Credit and transacts a general banking business.  
HONOLULU BRANCH, 67 KING ST.

## Oahu Railway Time Table.

OUTWARD.  
For Waianae, Waiawa, Kahuku and Way Stations—9:15 a. m., 9:20 p. m.  
For Pearl City, Ewa Mill and Way Stations — 9:30 a. m., 9:15 a. m., 11:05 a. m., 12:15 p. m., 3:20 p. m., 5:15 p. m., 9:30 p. m., 11:00 p. m.  
For Wahiawa—9:15 a. m. and 5:15 p. m.

INWARD.  
Arrive Honolulu from Kahuku, Waiawa and Waianae—8:35 a. m., 5:31 p. m.  
Arrive in Honolulu from Ewa Mill and Pearl City—7:45 a. m., 8:35 a. m., 10:35 a. m., 1:40 p. m., 4:31 p. m., 5:31 p. m., 7:39 p. m.  
Arrive Honolulu from Wahiawa — 8:35 a. m. and 5:31 p. m.

\* Daily.  
† Ex. Sunday.  
‡ Sunday Only.

The Halolewa Limited, a two-hour train (only first-class tickets honored), leaves Honolulu every Sunday at 8:23 a. m.; returning, arrives in Honolulu at 10:10 p. m. The Limited stops only at Pearl City and Waianae.

G. P. DENISON, F. C. SMITH, Supt. G. P. & T. A.

Black books of all sorts, ledgers etc. manufactured by the Bulletin Publishing Company.

## Alexander & Baldwin LIMITED.

J. P. COOKE, Manager

OFFICERS.  
H. P. Baldwin, President  
J. B. Castle, Vice President  
W. M. Alexander, Second Vice Pres.  
L. T. Peck, Third Vice Pres.  
J. Waterhouse, Treasurer  
E. E. Paxton, Secretary  
W. O. Smith, Director

## SUGAR FACTORS, COMMISSION MERCHANTS and INSURANCE AGENTS

Agents for  
Hawaiian Commercial & Sugar Co. Haiku Sugar Company.  
Paia Plantation.  
Maui Agricultural Company.  
Kihei Plantation Company.  
Hawaiian Sugar Company.  
Kahuku Plantation Company.  
Kahului Railroad Company.  
Haleakala Ranch Company.  
Honouua Ranch.

## Castle & Cooke, Ltd

HONOLULU:

## Commission Merchants Sugar Factor:

AGENTS FOR—  
The Ewa Plantation Co.  
The Waiawa Agricultural Co.  
The Kohala Sugar Co.  
The Waimea Sugar Mill Co.  
The Fulton Iron Works, St. Louis.  
The Wahiawa Water Co., Ltd.  
The Geo. F. Blake Steam Pumps.  
Weston's Centrifugals.  
The New England Life Insurance Co. of Boston.  
The Aetna Fire Ins. Co. of Hartford, Conn.  
National Fire Insurance Co. of Hartford.  
The American Steam Pump Co.

## Wm. G. Irwin & Co., Ltd

WM. G. IRWIN, President and Mgr.  
JNO. D. SPRECKELS, 1st Vice Pres.  
W. M. GIFFARD, 2d Vice Pres.  
H. M. WHITNEY, Treasurer  
RICHARD IVERS, Secretary  
W. F. WILSON, Auditor

## SUGAR FACTORS and COMMISSION AGENTS

Agents for  
Oceanic Steamship Co., San Francisco, Cal.  
Western Sugar Refining Co., San Francisco, Cal.  
Baldwin Locomotive Works, Philadelphia, Pa.  
Newall Universal Mill Co. (Manufacturers of National Cane Shredder, New York, N. Y.)  
Pacific Oil Transportation Co., San Francisco, Cal.

## C. Brewer & Co., Ltd.

QUEEN STREET, HONOLULU, T. H.

AGENTS FOR:  
Hawaiian Agricultural Co., Ookala Sugar Plant Co., Onomea Sugar Co., Honomu Sugar Co., Wailuku Sugar Co., Pepeeke Sugar Co., The Planters Line of San Francisco Packets.

LIST OF OFFICERS:  
C. M. Cooke, President; George Robertson, Vice President and Manager; E. F. Bishop, Treasurer and Secretary; F. W. Macfarlane, Auditor; P. C. Jones, C. M. Cooke and J. R. Galt, Directors.

## FIRE INSURANCE

## THE B. F. DILLINGHAM CO LIMITED.

General Agent for Hawaii:  
Atlas Assurance Company of London.  
New York Underwriters' Agency.  
Provident Washington Insurance Co.  
4th FLOOR, STANGENWALD BLDG.

## LIFE INSURANCE

is not a Luxury; it is a Necessity. But you must have the BEST and that is provided by the famous and most equitable Laws of Massachusetts, in the

## New England Mutual Life Insurance Co.,

OF BOSTON, MASSACHUSETTS.  
If you would be fully informed about these laws, address

## Castle & Cooke, GENERAL AGENTS,

HONOLULU, T. H.

## WM. G. IRWIN & CO., LTD.

AGENTS FOR THE  
Royal Liver Co. of Liverpool, Eng.  
Commercial Union Assurance Co., Ltd. of London, England.  
Scottish Union & National Ins. Co. of Edinburgh, Scotland.  
Wilhelms of Magdeburg General Insurance Company.

Fine Job Printing at the Bulletin Office.



**HOSTETTER'S  
CELEBRATED  
STOMACH  
BITTERS**

There are hundreds of men and women who have not eaten a hearty meal for years. Their stomachs have "gone back" on them. In such cases the Bitters will be found very helpful. It strengthens the stomach and cures Dyspepsia, Indigestion, Poor Appetite, Heartburn, Bloating Cramps or Kidney Ills.

## Do You Want Your Laundry In a Hurry?

We will call for and deliver it the same day for a small extra charge.

TELEPHONE MAIN 73.

## Sanitary Steam Laundry

## SPECIAL SUMMER EXCURSION RATE TO THE VOLCANO

Leaving Honolulu every Tuesday by the S. S. "KINAU" and returning by the same vessel on Saturday of the week following. One day in Kilo. Eight days at the Volcano.

## ONLY FIFTY DOLLARS.

Tickets and information regarding the trip can be had from

**THE HENRY WATERHOUSE  
TRUST CO., LTD.**  
Cor. Fort and Merchant Sts., Honolulu.  
Telephone "Exchange" 4.

## Hee Kaur Kee, CONTRACT PAINTER

No. 1320 Nuuanu St., near Kukui, Honolulu.

## WALL PAPER FOR SALE

## DO YOU WANT KOA FURNITURE?

You Get It Here as You Want It.

## Wing Chong Co. KING, CORNER BETHEL STREET.

## EL TORO CIGAR PAR EXCELLENT 5 CENTS

HAYSelden TOBACCO CO., Distributors.

## BUILDING MATERIAL OF ALL KINDS. DEALERS IN LUMBER AND COAL.

ALLEN & ROBINSON,  
Queen Street : : : : Honolulu.

## KEYSTONE-ELGIN WATCHES INGERSOLL WATCHES

At All Watchdealers.

## Jos. Schwartz,


Agent for Hawaiian Islands,  
Cor. FORT and KING STS., Honolulu

## M. Phillips & Co.

Wholesale Importers and Jobbers  
EUROPEAN and  
AMERICAN DRY GOODS  
FORT and QUEEN STS

## Rubber Tires FOR CARRIAGES AND AUTOMOBILES.

## Schuman Carriage Co., YOUNG BUILDING.



**CURE YOURSELF!**  
CURES  
In 3 to 5 Days  
Dyspepsia  
Indigestion  
Flatulence  
Heartburn  
Bloating  
Cramps  
Stomach  
Pain  
Acid  
Bile  
Constipation  
Diarrhea  
Colic  
Migraine  
Headache  
Nervousness  
Insomnia  
Anxiety  
Depression  
Laziness  
Weakness  
Loss of Appetite  
Loss of Energy  
Loss of Memory  
Loss of Concentration  
Loss of Interest  
Loss of Hope  
Loss of Faith  
Loss of Courage  
Loss of Honor  
Loss of Respect  
Loss of Dignity  
Loss of Power  
Loss of Wealth  
Loss of Health  
Loss of Life

The Weekly Edition of the Evening Bulletin gives a complete summary of the news of the day.

# Partners of the Tide

By...  
**JOSEPH C. LINCOLN,**  
Author of "Cap'n Ez"

Copyright, 1905, by A. S. Barnes & Co.

## CHAPTER XV—CONTINUED

"I call'te Cook was expectin' to see another feller. 'Are you from the Salvage company?' says he. 'No,' says I, 'I ain't a feller; my name's Titeomb. I'm from Orham. My partner's a young feller name of Nickerson. He's the one you picked out to lift the Liberty's anchor that time.' Well, that way of puttin' it made him laugh, and he told me to go ahead and spin my yarn, only be quick. I spun it, but I ain't sartin that I was quick. I never talked so afore in my life, though I've beat it once sence. When I have anchor finally he says, 'Cap'n, there's nothin' the matter with your nerve, is there? I told him no, I hadn't had to take physic for it. 'Well,' says he, 'I'd like to give you the job, but you ain't big enough. This ain't anchor draggin'!"

"Then I got after him again, told him about the new schooner, drew a diagram of the shoal and made it plain jest how she'd got to be got off if 'twas done at all and that we could do it as well as anybody else in the world and a whole lot cheaper. At last he told me to come in and see him again late that afternoon.

"I was round on time, you bet! The hay lip chap told me the old man had gone for the day, but that he'd left word that 'twas no use; our firm want big enough for the job. Says I to hay lip, 'Where's the old man live?' He didn't know, bein' a good liar. I asked him in an interested sort of way if he was dead sure where he lived himself and went out to pay over the directory. Inside of an hour I was on an electric car bound for Brookline and Cook's home.

"Pretty soon down comes Cook in a swallerin' coat. He looked mad. 'Is it you?' he says. 'Didn't you git my message?' I told him I'd got it, but that 'twouldn't be fair to him to let that end it. Pretty soon young Cook come in, and he listened too.

"Finally the old man says, 'Well, Titeomb, what's your figger?' I told him what you and me had agreed on. He seemed surprised, I thought. Then he and his son went into the next room and talked. When they come back he says, 'Titeomb, you've got the perseverance of the devil or that partner of yours.' Put you in good company, hey, Brad? 'Your price, I don't mind tellin' you,' he goes on, 'is lower than any one else has given. If you were a bigger concern I guess I'd give the job to you. Anyway, you come in and see me tomorrow.'

"Well, this mornin' I was at his office when the doors opened. And there I set until after 2 this afternoon. A feller from the Salvage company come in while I was there, and so did one from the South Boston tug people. They went into Cook's parlor and come out again. Finally the old man come for me. He and his son were there together. 'Titeomb,' says he, 'I'm a fool, and I know it, but I'm goin' to let you try to git the Freedom clear.' That wain't all he said. He went on to

"I know all that. We'll mortgage the Diving Belle and raise the cash." "Are you out of your head? We've been lucky so far and haven't had a failure. But failures are bound to come. Suppose we work on this barge for a month and then a heavy gale strikes?" "But, Brad, think of what it means to us if we make good!" "Cap'n Ez, we got that job because nobody else would take it that way. We can do it if anybody can, but nobody else would be fool enough to gamble against the Lord Almighty's weather. We'd be called fools from here to Provincetown."

The captain drew a long breath. "All right," he said gloomily. "Maybe you're right, Brad. It is a crazy gamble, I s'pose, and I was afraid you'd see it that way. Only you must make up your mind to this—if we give up this chance we must settle back and be nothin' but anchor draggers the rest of our lives. We've flunked once, and no matter how good the reason is, no more big jobs 'll come our way. But if we make good—what?"

Now it was Bradley's turn to hesitate. There was some sense in what his partner said, but it was playing against odds and with the last dollar on the table.

Suddenly Bradley spoke. "Oh, hang it, what's the odds?" he exclaimed recklessly. "Go ahead, cap'n! I'll sink or swim with you!"

Captain Ezra grasped his hand. "I swore you would," he cried. "Son, this job's goin' to make us!"

Bradley's laugh was short and rather bitter. "Yes," he said, "make—or break."

CHAPTER XVI

IT was close to daylight when the partners separated. They had planned and figured and estimated, and each now knew what his part in the great fight was to be. As he was leaving Bradley asked the captain how, in his opinion, Obed Nickerson had learned that they had the contract.

"Phoned the Salvage company," replied Captain Ezra decidedly. "I'll bet on it. You see, Brad, this job's a big one, and the salvage folks might have figured there was sugar enough in it to drop a lump in friend Obed's teacup providin' he stirred up their spoon. Well, good night, or good mornin', rather. It's double or quits with us this time, son, for sartin, but if Titeomb & Nickerson do go under I'll be with colors flyin'."

Within the week Setteck Point, from a lonely, gull haunted sand pit, inhabited only by the life saving crew and the lighthouse keeper and his family, became a small town, the population of which left each morning for the Razor-back shoal and returned at night to eat and sleep in the big shanty and those surrounding it.

Captain Titeomb saw the people at the Wellmouth bank and placed a mortgage on the Diving Belle. As the partners owned her free and clear, he was able to get her cost price, \$5,000.

Placards announcing that men were wanted at once and at \$3 a day and board were hung in the postoffices and railway stations in Orham, South Orham, West Harniss, Harniss Center, Wellmouth and other towns; also an advertisement appeared in the log. The response was immediate. Work at good wages was scarce in the winter months, and men came from twenty miles away to obtain it.

The Diving Belle carried them down to the Point. There, under Barney Small's supervision, some set to work building extra bunks in the big shanty, slinging hammocks, putting up stoves—the partners bought five secondhand ranges—and making three neighboring abandoned fishing huts inhabitable. The rest worked over the stranded coal barge, getting out the anchors, stripping her of all unnecessary ironwork and rigging and preparing to bring the coal from her hold and dump it overboard.

Seventy men were hired altogether, and to feed them it was necessary to buy large quantities of provisions. Captain Titeomb managed this part of the business, and the bargains he made with Caleb Weeks and other storekeepers were wonderful and in some cases not too profitable for the sellers. As Mr. Weeks said: "Ez Titeomb spent half the forenoon with me today, and afore he got through talkin' he'd tangled me up so with figgers that I don't know whether I sold him salt at a cent a pound or cornmeal at a dollar a barrel. I'll have to put in the rest of the day callin' him and addin' up, so's to know whether I've made money or lost it."

"What do you want to see him for?" says he.

tell me that in givin' us the job he was riskin' a brand new vessel worth \$80,000. 'Mind,' he says, 'I believe you can do it if anybody can, but I won't risk another cent. I won't pay by the day. I'll give you \$15,000 when she's off the shoal and towed to Boston, but I won't pay a red until she is. It's got to be a contract job, payment on delivery of the goods.'

Bradley's face fell. "Of course that settled it," he said. "You couldn't accept such an idiotic offer as that."

Captain Ezra took his cigar from his mouth. "Well, Brad," he answered soberly, "that's what I did; I accepted it."

"Now, Cap'n Ez, look here! You and I have put almost our last copper into the new schooner. We've got practically no ready money. We must live from event to a hundred men at \$3 a day and pay them every week. We must feed 'em. We must spend money fixin' up the shanty to lodge 'em. It'll take maybe a month before we can live clear—if we do clear here. We may have to spend \$50 or \$75 thousand before then. Where's the money comin' from?"

(To Be Continued)

THAT BABY SHOW

There was considerable excitement created about town over the fact that baby exhibits had been permitted from the list of amusements to be exhibited at the coming baby show. That exhibition has been stretched out now. There was some talk of a rival baby show, but now that matters have been adjusted all is quiet—until Saturday.

Improvement in the method of manufacture enables the Honolulu Gas Company to furnish consumers of 500 or more feet per month at

\$1.50 per M.

BUSINESS DIRECTORY

MUSIC: Mr. Jas. Sheridan, pianoforte tuner. All orders should be left at the Hawaiian News Co. Young bldg. Phone 294 or cor. Alakea and Hotel Sts. LOCKSMITH: See Hastings for repairs of Locks, Keys, Music Boxes, Sharpening of Fine Cutlery. Rear Union Grill. BARBER SHOP: For a nice, smooth shave call at the Criterion Shop, 1111 Fort St. PLUMBING: Yee Sing Kee—Plumber and Tin Smith, Smith St., bet. Hotel and Pauahi. BULLETIN ADS. PAY

EMPLOYMENT OFFICE: Help supplied to plantations, families, shippers and storekeepers. Sato & Ozawa, Phone White 2576. 3638-tf. For house-help, phone White 2891, Makiki. General Employment Office, cor. Pensacola and Beretania. DRESSMAKING: Mme. Lambert, the Parisienne Dressmaker, has removed to 452 Miller St. nr. Kinau. Stylish dresses, reasonable prices. 3697-1m. REPAIRING: Umbrella re-covered and brass polished. Takata, 1234 Fort St. 3467-tf

PROFESSIONAL CARDS

DENTIST: A. J. DERBY, D. D. S. Boston Building, Third Floor. For Sale

We have been instructed by a party about to leave for the Coast to place on the market:— House and Lot on King Street in a desirable neighborhood.

House contains parlor, dining-room, 2 bedrooms, bathroom, kitchen, pantry, etc., and is in good condition. Lot has a frontage of 50 and a depth of 120. Artesian water.

\$1750 Bishop Trust Co., LIMITED. 924 BETHEL ST.

DAVID DAYTON 137 MERCHANT STREET. LOTS FOR SALE IN KAPIOLANI PARK ADJACENT to Other Desirable Localities. HOMES FOR SALE ON WILDER and GULICK AVES. No Reasonable Offer Refused. THE JAPANESE Labor Union

Employment Office supplies all Nationalities to plantations, contractors and shipping. YOSHIKAWA, 163 KING ST. ICE

manufactured from pure distilled water. Delivered to any part of city by courteous drivers. OAHU ICE AND ELECTRIC CO., Kewalo. Telephone Blue 3151. William T. Paty, CONTRACTOR AND BUILDER, ALAKEA STREET.

All classes of Building Work promptly and carefully executed Office 'Phone Blue 1801. Residence 'Phone Blue 2332 P. H. Burnette

Attorney-at-Law and Notary Public. Real Estate, Loans, Collections. Agent to Grant Marriage Licenses. Phone: Office Main 310; Res. Wh. 1341. FOR RENT—BY HOUR OR DAY A REO AUTOMOBILE CHARGES REASONABLE. L. HOP, River bet. King and Hotel Streets. Phone White 541.

Go To Haleiwa Next Saturday; Moonlight Dance Book Your Rooms St. Clair Bidgood, Manager.

SAVE money on wall paper. Attractive designs and latest styles do not mean expensive papers. See the large assortment of handsome but inexpensive papers at Wilder & Co

For Over 60 Years Mrs. Winslow's Soothing Syrup has been used for over SIXTY YEARS by MILLIONS of Mothers for their CHILDREN while TEETHING. With perfect success. IT SOOTHES THE CHILD, SOFTENS THE GUMS, ALLAYS all pain, CURES WIND COLIC, and is the best remedy for DIARRHOEA. Sold by Druggists in every part of the world. Be sure and ask for Mrs. Winslow's Soothing Syrup and take no other kind. 25 Cents a Bottle. An Old and Well-tried Remedy J. M. LEVY & CO., FAMILY GROCERS PHONE MAIN 149 S. SAIKI, Bamboo Furniture Made to Order. Picture Framing a Specialty. 563 S. BERETANIA ST. TELEPHONE BLUE 881. COAT AND PANTS CLEANED AND PRESSED FOR 50 CENTS PHONE MAIN 457. Sun Rise Dyeing House 1246 FORT STREET. STEINWAY, STARR AND OTHER PIANOS. THAYER PIANO CO. 156 HOTEL STREET. Phone Main 218. TUNING GUARANTEED.

All our work is done by hand; no machines to wear out your clothes, ruin your shirts and destroy your fine fabrics. It takes more time but our methods are the best. J. ABDIE, FRENCH LAUNDRY. The Weekly Edition of the Evening Bulletin gives a complete summary of the news of the day.

REQUIREMENTS AS HIGH AS IN STATES

Regents Discuss Matter Of Admission To College

The standard of entrance requirements of the new College of Agriculture and Mechanic Arts of Hawaii is to be fully as high as that of similar institutions in the States, according to the decision arrived at last night by the Board of Regents at their meeting with a number of the prominent educators of Honolulu. The meeting was held at the University Club and in addition to the Regents was attended by Presidents Horne and Griffiths, Superintendent Babbitt and Professor Law.

The matter was very fully discussed by those present and all were unanimous in their opinion that there should be no lowering of the requirements at the beginning. The school should start off right and not make concessions for the sake of increasing the number of students.

President H. E. Cooper stated at the commencement of the meeting that the Board had a tentative proposal for temporary quarters for the College on Young street, and he was of the opinion that the offer should be accepted, in order that no mistake might be made in the matter of permanent buildings. He then called for suggestions along the line of requirements for admission to the College.

Superintendent Babbitt thought it would be a very grave mistake to take applicants with too low requirements. The requirements should be made as rigid as those of the best agricultural colleges in the States.

Cooper asked if Babbitt thought High School graduates should be accepted on their diplomas. Babbitt was of the opinion that this would depend on what course they had taken in school. Cooper asked if Babbitt could suggest any standard. The Superintendent said he could not until he knew what studies would be specialized in. He thought that after a while, when the College got to running, both the High School and Punahou College would map out courses to prepare pupils for entrance to the College of Agriculture.

President Horne of the Kamehameha Schools thought that the requirements should be such that no pupil would be admitted who had not completed the High School course in algebra and geometry. An elementary course in physics and chemistry, including the usual High School experiments, should also be a requisite. The English entrance requirements should include a regular, mapped-out course such as is followed in the High Schools of the States.

President Griffiths of Punahou stated that he did not think that, at present, the Board could count on more than three or four students a year coming from his school. He also thought the standard of admission should be a high one. But he told the Board that before they could count on getting any students for the college, they must be ready to receive them and must have something to offer them. There must be a faculty selected, men who have something to offer and can command the confidence of the student community.

BEEF HUI BOOSTS PRICE TO BOARD

Contract Awarded For Supplies For The Settlement

The opening of bids for furnishing supplies for the Mookai Settlement and the Insane Asylum, and the awarding of contracts, was the only business transacted by the Board of Health at its meeting yesterday afternoon, aside from the granting of a permit to R. A. Lucas of Hilo for a retail fish market. Most of the bids were awarded without much discussion, the lowest bid being accepted in practically all cases.

The first bid taken up was that for supplying beef for Mookai. There was only one tender, that of A. W. Carter, representing the Parker interests. The bid was for 6-1-4 cents, a half-cent higher than the Board is now paying. Pinkham stated that no other bid had been received.

"Looks as if the hui was at it again," remarked Smith. "Looks to me as if our hospital would have to go fluky," said Pinkham. The bid was accepted. The bid of K. B. Porter to purchase the green hides of the cattle killed by the Board was accepted. He bid ten cents. The Metropolitan Meat Company made a similar offer. Other contracts were awarded as follows: Insane Asylum Contracts

Allen & Robinson: Cedar lumber, T. H. Davies & Co.: Turpentine, California cheese, canned pears, canned peaches. H. Hackfeld & Co.: Green Kona coffee, canned corn, matches, condensed milk, Hawaiian rice, red salmon, raw No. 1 sugar. E. O. Hall & Son: White lead, brooms, mops.

Honolulu Electric Co.: Ice. Honolulu Dairy Association: Milk. Inter-Island Navigation Co.: Coal. Lewis & Co.: Baking powder, white beans, eggs, macaroni, mops, onions, California oranges, potatoes, pork, prunes, brown soap, spaghetti, tea. Love's Bakery: Bread. H. May & Co.: White beans, flour, leaf lard, sweet potatoes, granulated sugar, canned tomatoes. Wilder & Co.: All grades Northwest lumber.

Awards for Settlement Supplies Allen & Robinson: Cedar lumber 6x2, cedar lumber 6x2, split redwood posts. Theo. H. Davies & Co.: Boiled oil, turpentine, lime, canned salmon, Walrus brand. H. Hackfeld & Co.: Boiled oil, Royal baking powder, corned beef, green Kona coffee, roasted Kona coffee, Golden Gate flour, matches, Eagle condensed milk, Rose condensed milk, Hawaiian rice, No. 1 sugar, salmon, canned salmon, tepee brand, coarse salt. E. O. Hall & Son: 20d. nails iron cut, 20d. galvanized nails, Pioneer white lead, kerosene. Inter-Island Steam Navigation Company: Newcastle coal. Lewis & Co.: Brown soap. Love's Bakery: Wheat bran. H. May & Co.: Guava charcoal. Union Feed Co.: Rolled barley, wheat, bran, hay.

Wilder & Co.: All grades lumber, laths, shingles, doors and windows. PORTO RICANS HOLD UP STAGE Word comes from Hilo that three Porto Ricans, armed with a toy revolver, attempted to hold up the stage near Pepeekeo yesterday morning. There was only one passenger in the stage, a Japanese, who had a big sack of money with him. He made a desperate fight with the highwaymen and managed to hold them off until help arrived in the shape of a luma from a nearby plantation when two of the gobers took to their heels. The Japanese held on to the third man and he was secured and taken to Hilo. The fight must have been desperate judging from the appearance of the two men.

The police are on the trail of the two men that got away. The steamer Claudine, reporting an uneventful voyage, arrived in port this morning from Kahului. Commander Bennett reports the Enterprise loading at Hilo and the Alaskan at Kahului. The Claudine returns to Maui ports tomorrow afternoon.

temporary quarters for the college, pending the building of permanent quarters.

BY AUTHORITY

All outstanding bills for materials furnished and services rendered to the Board of Agriculture and Forestry during the period commencing July 1st, 1905, and ending June 30th, 1907, must be in the office of the Board at the Government Nursery, properly certified, if ON THE ISLAND OF OAHU, on or before July 5th, 1907, and if ON THE OTHER ISLANDS, by July 10th, 1907. C. S. HOLLOWAY, President and Executive Officer Board of Commissioner of Agriculture and Forestry. Honolulu, T. H., June 14, 1907. 3719-June 15, 29, 24.

Thursday, July 4th, being a legal holiday all offices of the Territorial government will be closed on that day. A. L. C. ATKINSON, Acting Governor of Hawaii. Executive Building, Honolulu, June 17th, 1907. 3721-3t

Corporation Notices.

NOTICE OF ANNUAL MEETING OF THE STOCKHOLDERS OF THE FIRST AMERICAN SAVINGS & TRUST CO. OF HAWAII, LTD. Notice is hereby given that the Annual Meeting of the Stockholders of The First American Savings and Trust Co. of Hawaii, Ltd., for the election of officers and directors, and for such other business as may be brought before the stockholders, will be held at its place of business on Fort St., in Honolulu, Island and County of Oahu, on Saturday, July 6th, 1907, at 1 p. m. Honolulu, June 19th, 1907. (Signed) L. T. PECK, Secretary and Cashier. 3722-7t

Business Notices.

DESCRIPTION OF NAME, MARKS AND DEVICES USED BY THE ARCTIC SODA WORKS ON BOTTLES AND SIPHONS BELONGING TO IT. No. 4—Name, mark and device blown into side of bottle as follows: ARCTIC SODA WORKS HONOLULU. No. 5—Name, mark and device blown into side of bottles as follows: ARCTIC SODA WATER WORKS M. K. DE SA, PROP. HONOLULU, H. I. No. 6—Name, mark and device tied on side of siphons as follows: ARCTIC SODA WORKS HONOLULU T. H.; on the metal top of siphon appears the stamped and cut in letters: M. R. S. 3712—June 6, 13, 20



The woman who knows insists on getting

Sweet Violet Butter because she is certainly sure that there is no other kind "just as good." Try it. A taste will delight you.

C. Q. YEE HOP & CO. Tel. Main 251

FRESH CUT FLOWERS ON HAND AT ALL TIMES. SEED FOR SALE. Mrs. E. M. Taylor YOUNG BUILDING TEL. MAIN 339.

WANTS The Little Ads. with the Big Results

WANTED

A partner with capital to invest in manufacturing business in Honolulu, well established; also good position for bookkeeper and financier. Apply in first instance "Manufacturer," Bulletin office. By experienced bookkeeper having spare time, an extra set of books. Address "C. R.," this office. White rats or mice. U. S. Quarantine Office. 3700-tf Clean wiping rags at the Bulletin office. 1f

SITUATION WANTED.

Situation by up-to-date office man, bookkeeping, etc. Address "W.," Bulletin office. 3722-2t

TO LET.

Modern stores, Knights of Pythias Hall building, Fred Harrison block corner Fort and Beretania Sts., from \$20 per month. Apply Fred Harrison on premises or P. O. B. 184. 3676-tf Nicely furnished rooms, with all modern improvements, cool and central. The Majestic, corner Fort and Beretania St. 3696-tf A pleasant home on Tantalus, well located; temperature ten degrees less than that of the city. Inquire A. V. Gear. 3696-tf Cottage, 5 rooms and bath, electric lights, etc. 1066 Young St. For particulars apply 1065 Beretania. 3717-2w Cheap—Fine, cool, mosquito-proof housekeeping rooms, electric lights and hot bath. Phone Blue 132. 3666-tf Cottage 1415 Alapai St. nr. Quarry; electric lights; fine view; \$18, including water. 3708-tf Cottages in Christly Lane. Apply Wong Kwai, Smith St., mauka Hotel. 2 furnished front rooms at 1223 Emma St.; rent reasonable. 3401-tf

FOR SALE.

Will sacrifice \$4000.00 24-30 H. P. Peerless automobile for \$2,000.00 to immediate purchaser. Owner leaving for Coast this week. Car newly painted, new tires and complete equipment, including: top with curtains, Warner speedometer, Rushmore searchlights, Prestolite tank, weed tire chains, two extra tires with cover, several inner tubes. Owner, Blue 3982. 3719-1w Fine corner lot in Makiki. Curbing, water, fruit and ornamental trees and all improvements. Two minutes' walk from cars and Punahou College. Address R. F., this office. Wm. Penn and Adelini Patti, the king and queen of Havana cigars, at all leading hotels and cigar stores. Myrtle Cigar Store, agents. Automatic Singer machine, almost new, for sale. Beretania, King Place, second house back of German Church. 3719-1w A SNAP—1903 Oldsmobile, buggy top, extra seat, tools, etc., for sale at a bargain for cash. Address "XVZ," Bulletin. 3720-1w Five-year-old Island horse; sorrel; broken to saddle. Price, \$75. Inquire this office. 3718-1w 27-ft. yacht, in good condition; cash or easy terms. Address "S.," Bulletin office. 3721-tf Beef cattle for sale at Kahuku, Hawaii. Apply Col. Sam Norris, Waiohinu.

LOST.

A bag containing tools, between Lihue and the Waialua bridge, Kauai. Reward if left at Lihue store. 3721-1w A ladies' diamond bar cluster pin. Reward if left at Bulletin office. 3715-1w

FOUND.

Black hand satchel containing cards, literature, etc. Owner apply this office. 3707-tf

Grand Symphony Concert WILL BE GIVEN BY THE Honolulu Symphony Society (R. RUDLAND BODE, Director) ASSISTED BY LOCAL TALENT —AT— Bishop Hall, Oahu College, —ON— Monday Evening, June 24, AT 8:15 O'CLOCK Program and particulars will be announced at a later date. THERE IS A LAUGHING TREAT IN STORE FOR YOU AT THE BABY SHOW PERETANIA AND MILLER STS., SATURDAY, JUNE 22, FROM 10 TO 5. Adults admission, 25 cents; children, 15 cents. HONOLULU BASEBALL LEAGUE SATURDAY, JUNE 22, 1907. 1:45—KAMS. v. PUNAHOU. ST. LOUIS v. DIAMOND HEADS. ADMISSION ..... 25 and 50 Cents The Weekly Edition of the Evening Bulletin gives a complete summary of the news of the day. Fine Job Printing at the Bulletin Office.

ALEXANDER YOUNG HOTEL HONOLULU CENTRAL ABSOLUTELY FIREPROOF MOANA HOTEL Waikiki Beach J. H. HERTSCHE, General Manager

THE FAMOUS Turco-American Glass Pipe ASSURES A CLEAR, CLEAN SMOKE sold by P. H. McINERNEY, 1130 FORT ST. MANICURING, SCALP TREATMENT AND FACIAL MASSAGE. 1150 FORT STREET. MRS. DORIS E. PARIS 1156 FORT ST.

# YOU CAN SHOOT ON JULY FIRST

Reports indicate that you'll have plenty to shoot at, too. A very successful hunting season is anticipated, in which many will participate.

Consequently we've got a big stock right ready for all comers. This stock consists of hunting coats, vests, etc., guns, ammunition,—everything.

Just on hand: stock of L. C. SMITH SHOTGUNS and 150,000 FRESH CARTRIDGES.

## E. O. Hall & Son, Ltd.,

FORT AND KING STS.

# ROYAL HAWAIIAN HOTEL

THE ONLY TROPICAL HOTEL IN HONOLULU.

Meals served out of doors on large semi-circle verandas. The only first-class hotel in Honolulu that serves on the American plan.

Meals served American or European plan.

H. BEWS, Mgr.

A dance on arrival of Alameda occurring every three weeks.

# THE CONSUMERS' CHOICE

After a trial, is always for Palm Bakery bread. Why not serve the best by buying your bread, cakes and pies here? We deliver to all parts of the city.

## The Palm,

116 HOTEL STREET PHONE MAIN 311

# HO! FOR THE PACES

UNDER THE AUSPICES OF THE

## Hawaii Jockey Club

The Following Program is Offered for the Meet To Be Held at

### Hoolulu Park, on July 4th, 1907

COMMENCING AT 10 O'CLOCK A. M.

Purse	Conditions of the 1-4 mile Merchants' Stakes are as follows:
1 O'CLOCK P. M.	
Foot Ball . . . . . C. C. Kennedy Cup	All horses other than Hawaiian-bred to carry weight for age.
1 Mile Luna Race, 175 lbs. up . . \$50.00	Hawaiian-breds to carry the following weights: 2-year-olds, 70 lbs.; 3-year-olds, 80 lbs.; 4-year-olds and up 90 lbs.
Baseball Game . . . . . \$50.00	Nominations to close on May 14th, 1907, at 6 p. m., and must declare on or before June 17th, 1907, at 6 p. m.
Throwing the Hammer, Foot Races, Broad Jumping and other Field Sports to take place between the following races:	Owners of other than Hawaiian-bred horses must give name of horse with their nomination.
1-4 mile—Merchants Stakes, free for all . . . . . \$1000.00	Owners of Hawaiian-breds can give nomination on May 14th, 1907, and will be allowed until June 17th, 1907, to name their horse.
1-2 mile—Japanese Race . . . \$50.00	1% of purse i. e. \$10.00 to be paid with nomination; 9% of purse i. e. \$90.00 to be paid when entries close on June 17th, 1907.
1-2 mile—Hawaiian Bred . . . \$75.00	Winner to take entire purse. There must be at least 4 entries, and not less than 3 starters.
1 mile—Gentlemen's Riding Race, 160 lbs. . . . . Volcano Stables Cup	If there should be only one starter he can walk over for the entrance money; if only two starters they can run the race for the entrance money.
1-2 mile—Free for All . . . \$100.00	Conditions of the Japanese Stake race as follows:
3-4 mile—Hawaiian Bred . . . \$75.00	Not less than ten nominations, and not less than six starters.
1-2 mile—Japanese Stake Race . . . \$150.00	Nominations to close May 14, 1907, at 6 p. m.
1-1/2 mile—Free for all . . . . . Primo Cup and \$150.00	\$5.00 to be paid with nomination. \$10.00 to be paid with entry.
1 mile—Hawaiian Bred . . . \$100.00	Winner to take entire purse.

## AMUSEMENTS

### Swimming, Bowling and Shooting At HOTEL BATHS

HOTEL ST. NEXT TO YOUNG HOTEL.

TURKISH BATHS. OPEN ALL NIGHT.



# SPORTS

## AUTO CLUB FAVORS THE LAW

Friendship ceases between the scorches and the drivers of automobiles who consider the law and the rights of others.

At a meeting of the Automobile Club last night a resolution was passed to the effect that the members of the club would give every aid to the authorities in their endeavors to stop the wild driving of automobiles through the streets of the city. They also put themselves on record as favorable to the law that prohibits the running of machines by persons under the proper age, which the law gives as 17.

The discussion of good roads was gone into to some length, and it was voted that the roads about the island were in a far better condition at the present time than they were a year ago. There is one piece of road on the other side of Punaluu which is reported to be in very bad shape, but it was thought that by timely application to the Supervisors it would be repaired.

An offer of a cup to be contested for in an endurance run was made in a letter from C. C. von Hamm for the van Hamm-Young Co. Mr. von Hamm suggested that a free-for-all endurance run be made around the island for the cup, should the club decide to accept it.

Officers for the club were elected at the meeting last night as follows: Board of Governors—H. P. Wood, George P. Cooke, S. R. Jordan, Wilford Brown, W. H. Baird, George P. Denison and W. N. Patten.

## AMATEUR SKIPPERS ARE READY

All that now remains for the start of Governor's cup race is the starting gun. The handicaps and rules governing the race have been made and the yachts have each made up their crews. The handicaps will not be announced until after the race. Commodore Cooper will receive the handicaps in a sealed envelope that will only be opened after the race has been sailed.

The race will be over a 110 mile course with a time allowance of 30 hours.

The following conditions will govern the race:

Starting—Line between Healanu Boat Club and lighthouse. Time at 2 p. m. Preparatory gun at 1:55 p. m.

Timing—At start, taking as each individual yacht crosses the line, thus avoiding any crowding. Finish at spar buoy. Allowance: 15 minutes allowed in which to cross the line, otherwise, if starting later, time to be taken as crossing at 2:15 p. m.

Course—From starting line down channel, keeping between buoys; thence around Island of Oahu via Barber's Point, finishing to leeward and within 200 yards of the spar buoy at the entrance of harbor.

Log—On enclosed blank a correct log of the trip must be kept, such as when tacking or jibing; what light sails used, other than main and jib, and when taken down; wind and weather; position and proximity of other yachts, and, most important, that of taking the time when passing abreast of the different points. Don't fill in the time at the start.

Handicaps—Sealed and in the possession of Commodore Cooper, to be opened after the race.

Time Limit—Thirty hours, corrected time, is allowed in which to complete the course. All starters are expected to be under way by 1:45.

Instructions—If any of these instructions conflict with previous ones, follow these. For further information, apply to committee, who will be on hand at the Healanu-Boat Club at 1 o'clock.

Light Sails—No restriction as to sails used.

## A NOVEL MATCH

On Sunday the Honolulu Gun Club will shoot against the Maui Gun Club. The local club will shoot at the Kakaako traps and the Maui club will shoot at Punene and the result will be communicated by wire.

The local club had a meeting at which J. W. Harvey was elected captain of the team that will represent this city. The following men have been chosen to represent the local club in Sunday's match: J. W. Harvey, D. L. Austin, K. E. Porter, I. Spaulding, W. E. Roberts and J. A. Robb. The other two will be selected later.

There is a shortage of clay birds in town and if more do not arrive on the Sierra the match may be postponed.

## CUSTOMS VS. POST OFFICE

Baseball teams representing the Custom House and the Postoffice will cross bats at Kapiolani Park on Sunday morning.

The teams will have a barrel of root beer (?) from the brewery on third base.

This will probably be one of a series of games that will be played between these two teams.

The public will be sorry to see Major Van Vleet out of the game. Although the major was not the fastest player in the League he was always working and doing his best. Hannah and Ringland will also be missed. Ringland

was the best catcher in the local league and his clever backstop work and batting will be greatly missed by the fans.

Lyman, the Punahou catcher, will soon leave for one of the other islands. This will put the Puns in the hole for catchers. It is said that Hampton may don the mask.

## CHINESE TO HILO

To add to the many other attractions at Hilo on the 4th of July, the Chinese Athletic Club team of this city will be on hand to furnish some sport to the Hilo fans. The Chinese merchants of Hilo are real sports. They have raised \$175 to defray the expenses of the C. A. C. team. This team will go on the Claudine, which sails June 28th.

The players who will make the trip are E. Ayau, W. Ayau, Sing Chong Akina, Jno. Lo, Chi Bul, En Sue, Amoy, En Sang, Mon Yin, K. Y. Ching, Hang Chack and Lo On.

The attractions for the Glorious Fourth are growing and each day sees some new event to add to the already interesting program.

Baseball, football, horse racing and many other attractions will be pulled off to entertain the people who are so fortunate as to see the big doings.

## FORSYTHE MAY COME

When the new regiment comes to take the place of the one now stationed at Camp McKinley there are sure to be some new ball players in the ranks and there will be a scramble by the local teams to cinch the good men.

There is one player in this outfit that is the real thing. His name is Forsythe and he has a big rep as a slab artist of the first caliber. He pitched for the crack Presidio team in San Francisco and also played in the Coast League. The local team that captures this lad is sure to get a prize. There are, of course, other players in the bunch but this lad is probably the best.

## FOR \$1,000 STAKES

The following entries have been made in the Merchants' stakes of \$1000 which will be run at Hilo on the 4th: Phillip, by R. J. Ellis; Bruner, by L. C. Petrie; Racine Murphy, by Charles David; Laelle, by John O'Rourke.

## CUNHA STILL SICK

The race between Lawrence Cunha and Carl Oss for the medal offered by the P. M. C. A. for the 25-yard swim has not yet taken place. Cunha is still troubled with a sore neck and it will be some time before he will be in shape to race.

There will be a Ladies' Night at the Baths on next Wednesday night and it might be possible that these two boys will meet on this night. A program of aquatic sports is being arranged for this evening that will include the try-outs of the Myrtle and Healanu boys for the handicap races that take place on the 3rd of July in the big carnival that will be pulled off by the two clubs on that date.

## MEETING OF BICYCLE RIDERS

Bicycle racing is again coming to the front in Honolulu and this good old sport that was thought so much of a few years ago, is again getting a strong hold on the younger riders.

There will be a meeting of all interested in bicycle riding at Geo. Lowe's place on Bush Lane, Punchbowl, this evening and preliminary steps toward organizing a Bicycle Club will be taken. The program for the Fourth of July races will also be gone over.

The Japanese bike dealers are talking of offering bicycles as prizes on the Fourth. Should they hang up bicycles to be ridden for all racers will certainly have an object to do their best.

## BORN

FIELD—At Maternity Home, June 19, 1907, to the wife of F. C. Field of H. Hackfeld & Co., Ltd., a son.

HOPKINS—To the wife of W. B. Hopkins, June 19, 1907, a son.

In the matter of the Hawaiian Hardware Co., Ltd., vs. Koolau Kalkalana-jaole, the plaintiff's motion to vacate the order for transcript and fixing time to present bill of exceptions, was denied by Judge Robinson this morning.

## WANTS

For Want Column See Page Six

## FOR RENT.

A furnished house in splendid locality, for four or five months; married couple preferred. Rent reasonable. Address "J. S." this office. 3723-1w

## NEW - TO-DAY

'Phone 135

For WIRING, BATTERIES, SUPPLIES, TELEPHONES and GENERAL REPAIRING.



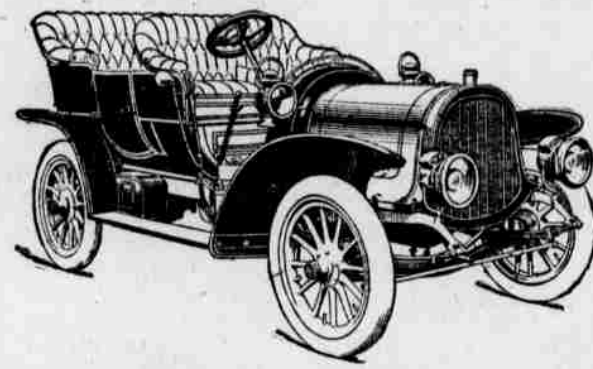
# Special Sale This Week

## Of Printed Dimities and Dotted Swiss

### At 15c a Yard

## Whitney & Marsh, Ltd.

See Our Window Display



## POPE-HARTFORD, MODEL L. \$3000

DELIVERED AT HONOLULU.

Nothing to compare with it at anything like the price. No car made, at any price, will do more. No car in the world, selling for less than \$3,750 will do as much. We don't ask you to accept this statement on our own assertion. We want you to compare and investigate. When you have been shown what "the other car" will do, then ask us to do the same "stunts" with the Pope-Hartford. We will prove that we can do them easily and we'll prove more. We will show you we can go on the level faster and up the hill faster; that the Pope-Hartford is a more comfortable car, a more reliable car, easier to control and lighter on tires and up-keep.

## POPE MANUFACTURING COMPANY, HARTFORD, CONN.

Members Association of Licensed Automobile Manufacturers.

## The Von-Hamm Young Co., Ltd

AGENTS. ALEXANDER YOUNG BLDG. WRITE FOR CATALOG

## Here's Handsome

## HOSIERY

FOR THE LADIES AT REMARKABLE PRICES.

### From 5c up to 75c

They are made from lisle thread in close and fancy openwork styles. You'll see the saving when you see the stockings.

## L. AHOY,

NUUANU STREET.

## J. LANDO'S Collegian Clothes

Hotel Street Store AND THE DEPOT FOR BOSS OF THE ROAD OVERALLS.

WE have just received a new line of RIBBONS and HAT BANDS in College and Club Colors.

L. B. KERR & CO., Ltd., Alukoa Street.



## FORECLOSURE SALES

# LANDS

## Kipahulu

ISLAND OF MAUI.

At my salesroom, 857 Kaahumanu Street.

### Monday July 1, 1907

AT 12 O'CLOCK NOON.

That certain tract or parcel of land situate at Kipahulu on said island of Maui containing an area of 21 acres and being the same premises described in Royal Patent Grant No. 2858 to Kilaumoku.

All that piece or parcel of land described in L. C. A. 10879 B. to Kaunohouliua situate at Alae-Paehala, Kipahulu, District of Hana, Island of Maui, and consisting of 11 1-2 acres and also all improvements and appurtenances to said premises.

All that certain tract, piece or parcel of land situate at Kipahulu, on the Island of Maui, containing an area of 8.06 acres and being the same premises described in Royal Patent 3692, L. C. A. 10,513.

JAS. F. MORGAN, AUCTIONEER.

## Icecream Soda Talk

It Is Useless For Us To Make a Talk.

OUR CUSTOMERS DO IT FOR US!

One Trial Will Be Sufficient To Make You one.

REMEMBER, ONLY THE BEST

AT

## CHAMBERS DRUG CO.,

Cor. Fort and King Sts. PHONE MAIN 13'

Tel. Main 198. P. O. Box 192.

## E. J. LORD,

SUCCESSOR TO

## Lord and Belser,

GENERAL CONTRACTOR.

Dredging, Sewers, Grading, Paving,

Teaming, Crushed Rock.

Black and White Sand and Soil

for Sale.

OFFICE AND YARD . . . . . SOUTH & KAWAIIHAO STS.

## \$500 Reward

The Trustees of the Oahu College offer a reward of Five Hundred Dollars for the arrest and conviction of the person or persons who set on fire the president's new house at Punahou on the night of June 3, 1907.

P. C. JONES, Treasurer.

## K. FUJITA & CO.

CONTRACTORS, BUILDERS AND CARPENTRY WORK.

Bamboo Furniture Made To Order.

NUUANU ST. COR. KUKUI. PHONE WHITE 901.

## HONOLULU IRON WORKS

Improved and Modern SUGAR MACHINERY of every capacity and description made to order. Boiler work and RIVETED PIPES for irrigation purposes a specialty. Particular attention paid to JOB WORK, and repairs executed at shortest notice.