

For knowing how to  
Advertise to profit  
Consult the patrons of  
The Evening Bulletin

# EVENING BULLETIN

The oldest and best.  
Reliable and newsworthy.  
Uniformly leads. The  
Evening Bulletin does

VOL. V. No. 829.

HONOLULU, H. I., FRIDAY, FEBRUARY 4, 1898.

PRICE 5 CENTS.

## Ayer's

### Sarsaparilla.

Cleanse your blood with Ayer's Sarsaparilla—the most thoroughly reliable alternative ever compounded. For scrofula, boils, ulcers, sores, carbuncles, pimples, blotches, and all disorders originating in vitiated blood, this medicine is a specific. Ayer's Sarsaparilla is equally beneficial as a remedy for catarrh, rheumatism, and rheumatic gout. As a Tonic, it assists the process of digestion, stimulates the sluggish liver, strengthens the nerves, and builds up the body when debilitated by excessive fatigue or wasting illness. Physicians everywhere consider Ayer's Sarsaparilla the best. It is a skillfully-prepared combination of the most powerful alternatives and tonics. No other blood-purifier gives equal satisfaction or is so universally in demand.

## Ayer's

### Sarsaparilla

PREPARED BY  
DR. J. C. AYER & CO., Lowell, Mass., U. S. A.  
GOLD MEDALS at the World's Chief Expositions.  
Ayer's Pills CURE BILIOUSNESS

## Hollister Drug Co., Ltd.

Sole Agents for the Republic of Hawaii.

H. L. GEAR, G. D. GEAR,  
211 Sansone St., S. F. 210 King St., H. I.

## GEAR & GEAR LAWYERS.

San Francisco and Honolulu

Having offices in San Francisco and Honolulu we are prepared to attend promptly to all matters entrusted to us in either of said places.

## HAWAIIAN

## Mercantile Agency

210 King street.

Difficult Collections a Specialty

GEORGE D. GEAR,

LAWYER.

Corner of King and Bethel Streets,  
Second Floor.

William A. Henshall,

## Attorney at Law

113 Kaahumanu Street. Tele. 663.

CHARLES F. PETERSON,

Attorney at Law and  
Notary Public.

Kaahumanu Street.

W. S. EDINGS,

Counsellor at Law.

Corner Bethel and King Streets,  
Honolulu, H. I.

GILBERT F. LITTLE,  
ATTORNEY AT LAW

HILO, HAWAII

A. C. WALL, D. D. S.,

DENTIST.

New Love's Building, Fort Street.

TELEPHONE 434.

## THE FREE KINDERGARTENS

Good Attendance at the Monthly Meeting of Directors.

Reports of the Various Kindergartens on Attendance, Discipline and Routine Work—Sympathy for Mrs. Thompson.

There was quite a large attendance at the monthly session of the Board of Directors of the Free Kindergarten Schools this morning, but the little business on hand was quickly dispatched. After the reports of the secretaries were disposed of the different kindergartens were reported as follows:

Chinese—Attendance smaller than usual this month, owing to the Chinese New Year festival. The little folks had been studying up flowers this month. As a final outcome of that effort Mrs. Birnie noted she had met the school out in procession this morning on their way to carry a bouquet of flowers to Mrs. Thompson in the hospital.

Hawaiian—Reported attendance improving, 26 the average. Mrs. Bray had held a mother's meeting.

Japanese—Average 45. Many very little ones a great care to teacher. A successful mother's meeting held last week on Thursday evening.

Palama—Very prosperous. Number enrolled 52. Smaller attendance during month from Chinese New Year. The work of nursery uninterrupted by illness of Mrs. U. Thompson, being carried on by girls from Kawaiahae and Kanehahua seminaries.

Portuguese—Kindergarten as usual full and doing well.

Ewa Plantation—Mrs. J. B. Atherton resigned her place as director on account of poor health, and it was accepted with regret. Her successor to be appointed next month.

Mrs. Schmidt, chairman of the Foreign Committee, reported as being unable to visit the schools this month and asked to be retired from duty for a while. Mrs. E. C. Damon of the same committee was appointed to act in her place for a few weeks.

A vote of sympathy, to be expressed in a letter from the secretary, was passed for Mrs. Thompson, the sanitary inspector now in the hospital.

### Solomon Hiram Sings.

A very large crowd enjoyed the band concert on the Hawaiian hotel grounds last evening. Miss Kanohe was ill and could not sing in the program. Her place was acceptably filled by Solomon Hiram, vocalist of the National band. For a closing number "Marseilles" was played as a compliment to the visiting French war vessel.

### Automatic Crossing Alarm.

By the Australia an automatic alarm for crossings arrived for the railroad company. The contrivance is new, and the one sent down is merely a sample. It will be set up near the depot and tested. If the arrangement work to advantage it will be adopted for general use on the line.

We don't mind telling you that Schilling's Best baking powder is simply made of best cream of tartar and soda.

We won't tell you how we mix it. That's our secret.

A. Schilling & Company  
San Francisco

## THE CITY'S WATER SUPPLY

Recommendations by Superintendents Brown and Rowell.

New Pumping Plant and Reservoir for Palama—Pipe Line and Reservoir for Diamond Head.

One of the most important questions to be decided by the coming Legislature is the future water supply of the city and whether Honolulu shall depend on an artesian or natural source for its future needs. There is little doubt that the present unsatisfactory and unreliable system of reservoirs dependent on the Nuuanu valley rainfall will be dispensed with, except for that particular district, and that the city proper will depend on artesian water only for its supply. To depend upon the rainfall would necessitate the building of large storage reservoirs and an elaborate system of filtration, costing considerably more than the erection of a new pumping plant and reservoirs and the boring of a new well at Palama.

Briefly stated the Minister of Interior will make the following propositions to the Legislature for an increased water supply, based on the recommendations in the reports of Superintendent of Public Works Rowell and Superintendent of Water Works Brown:

1. That new artesian wells be bored at Kapalama, near the Inesane Asylum, and connected with a pumping plant and station similar to the one at Beretania street but of greater capacity, and that a similar reservoir to the one on Punchbowl be built near by as a source of distribution.

2. That a reservoir of sufficient capacity to serve the needs of the growing district about Kapiolani park be constructed on the slopes of Diamond Head, to be connected with the Beretania pumping plant by means of an 8-inch pipe line.

The city is extending so rapidly both towards Palama and Diamond Head that the Beretania street pumps will soon be overtaxed, hence it is proposed to supply the Ewa end of the city with water from Palama wells, thus leaving the Beretania wells for the Waikiki end exclusively. Besides being much purer and better in every respect for drinking and household purposes, the extension of the artesian system is recommended as being by far the cheapest.

In his report Superintendent Brown asks for an increased appropriation to allow him to lay a continuous 8-inch pipe line from the pumping station to Diamond Head. At present the 8 inch line extends only to Thomas square on King street; from thence it drops to a 4 inch line as far as the corner of the Waikiki road; from there a 6 inch line goes to the Sunny South and from there on to Sans Souci the pipes are 8 inches in diameter. Superintendent Brown wants to take up the present pipes from Thomas square to the Sunny South and make a continuous 8 inch line to Sans Souci. Should the Legislature appropriate money for the Diamond Head reservoir the 8-inch pipe line could be continued by taking up the present 4-inch pipe from Sans Souci to President's Dale's house and substituting one of 8 inches to the reservoir, thus giving a continuous 8 inch pipe from the pumping plant.

All of the four and six inch pipe taken up can be utilized afterward by the government with very little loss.

It rests with the Legislature to determine what is to be done in the matter.

C. I. Helm has sold his finest carriage horse to T. H. Hobron.

## CIRCUIT COURT MATTERS

Orders and Petitions on Probate Matters—Mr. Baird Files His Bond.

There Are 131 Cases on the Calendar for the February Term of the Circuit Court.

There are 131 cases on the calendar for the February term of the Circuit Court which opens next Monday, Judge Stanley presiding.

In the estate of Chang King, deceased, Tong Duck as attorney in fact of Tong On, petitions Judge Stanley for the allowance and payment of a claim against the estate of \$154.25, payment of which has been refused by the administrator. W. S. Edings for petitioner.

W. H. Baird has filed his bond in the sum of \$2000 as assignee of the bankrupt estate of Harry Cannon with Theo. H. Davies & Co., Ltd., by J. C. Cook, secretary, as his surety. Judge Stanley has approved his bond.

In the estate of Wo Hing, deceased, Judge Stanley has granted the petition for temporary letters and has ordered that G. R. Rotiek be appointed temporary administrator under a bond of \$25,000, which has been filed with J. F. Hackfeld and C. Bosse as sureties.

In the matter of the guardianship of Angela, Rosalie and Charles Gilliland, minors, Judge Stanley this morning confirmed the master's report and approved the amended account filed by the guardian, Christina Gilliland, on the 3d day of February. The master was allowed a fee of \$15.

Judge Perry is still engaged in the trial of Fernandes vs Silva and others.

S. K. Kane, guardian of Kamsi and Papihina, minors, has filed his annual account showing receipts \$100.65, disbursements \$90.35, balance on hand \$10.30, and asks that the same be allowed.

### Miss Walsh's Farewell.


Yesterday evening Miss Walsh gave her farewell talk to a large number of friends at her rooms, and so delighted her auditors that the gathering did not disperse until after 10:30. Everyone present felt grateful to Miss Walsh for her efforts and good work, and wished her godspeed!

### Marsden and Koebels.

Commissioner J. Marsden and Prof. Koebels left by the Kinau this morning for Hawaii. They will proceed direct to Oloa and will there study coffee needs and the best means of protecting it from pests. They will be away about a month.

The Australia will bring the refrigerator for Camarinos' California Fruit market, containing the usual supply of fruits, fish, game, nuts, etc. Leave your orders early. Corner King and Alakea streets. Tel. 378.

Royal makes the food pure, wholesome and delicious.



**ROYAL BAKING POWDER**  
Absolutely Pure

ROYAL BAKING POWDER CO., NEW YORK.

## HOW CORAL REEFS COME

Interesting and Eloquent Lecture by a Renowned Scientist.

Professor Alexander Agassiz Holds a Brilliant Audience Enthralled at Pauahi Hall of Oahu College.

There was a splendid audience filling the beautiful Pauahi hall and adjacent apartments opening thereinto at Oahu College last night to hear Professor Alexander Agassiz lecture on coral reefs. Some of those present were Chief Justice Judd and wife, Miss Judd, Minister Damoa, Admiral Miller, Hon A S Claghorn, Princess Kaulani, Deputy Attorney General E P Dolan, Rev Dr Hyde and wife, Rev Dr Bishop and wife, U S Minister Sewall, French Commissioner Mons Vossion, Dr Stoggett, Theo H Davies, Clive Davies, Prof W D Alexander and wife, Mr and Mrs W R Castle, Dr N B Emerson, Col J H Soper, Col de la Vergue, Prof Maxwell, Col W F Allen and wife, Dr McGrew, W N Armstrong, Mr and Mrs B F Dilingham, Principal F A Hosmer, James Lyle, F S Dodge, Hon H M Whitney, Senator H Waterhouse, Mr and Mrs W A Bowen, Jos S Emerson.

Associate Justice Frear of the Supreme Court presided, the lecture being under the auspices of the University Society. In briefly introducing Prof. Agassiz, he made a graceful reference to his illustrious father, Prof. Louis Agassiz.

The distinguished speaker at the outset made a pleasant allusion to his appearance before a Honolulu audience fourteen years ago. He proposed to give them some of the results of the latest investigations of coral reefs.

Then the lecturer plunged into his subject, giving an account of investigations dating back to 1859. The great advance made in deep sea sounding and ocean bottom dredging was remarked. It had come to pass that we spoke now of 100 fathoms as shallow water. The chief motive of the discourse was to demonstrate that the theories of Darwin and Dana, for many years accepted by the scientific world as well established, on the making of coral reefs were altogether wrong. Prof Agassiz had explored and examined coral reefs in almost all seas where they abounded. What the results proved was in particular that the reefs are not formed at the surface, then to subside and have other layers of coral superimposed on them. As many present remembered his telling fourteen years ago, the coral "insect" sung by poets had no existence. The builder was a sea anemone or microscopic worm, not an insect, and lime formed upon it making coral, while the creature died and its material dissolved.

The coral worm can only exist at moderate depths, and must have a foundation on which to build. This is found on submarine mountain ridges, or plains elevated above the mean sea bottom, or isolated volcanic upheavals reaching to near the surface. Deposits of coral at greater depths than the level of origin the professor lucidly explained on the black board freely used for making illustrations. These were simply cave-downs or slides on the face of steep slopes and caused by the action of the waves.

In the course of his lecture Prof. Agassiz cited deep sea explorations of the ships Beagle and Challenger. It happened that Dr. Sloggett, one of the audience, was attached to H. M. S. Challenger on her famous expedition. The lecturer cited also the investigations of Semple, a German scientist, of Professors Pelew, Rein of Bohn and Dukas.

Continued on Fourth Page.

## DIPHTHERIA FROM RABBITS

Possible Source of the Dread Complaint in This City.

Claimed That Rabbits are Spreading the Disease Through the Central Part of the State of Iowa.

Diphtheria is comparatively a new disease to Honolulu. Indeed it has been said many times in the hearing of the writer that there never was a case in the Islands until quite recently and there are even some who still believe that the true diphtheria has not yet made its appearance. There can be no doubt, however, in the light of abundant testimony, backed up by bacteriological examinations, that the dread disease is here and probably here to stay.

Where it came from and how it has been disseminated in different portions of the city is a question neither physicians nor health authorities can answer, and they have about given up speculating on the matter, although the general impression prevails that the disease was brought here from San Francisco.

On more than one occasion the BULLETIN has called attention to the rapid increase of rabbits in this city, especially among the Portuguese. The sudden changing of the subject from diphtheria to rabbits may seem amusing but the connection will be established. When diphtheria was unknown there were no rabbits in this city. As the rabbits have been imported and multiplied as only rabbits do, so has diphtheria made its appearance and increased, and it will be found that in those localities where people live who keep rabbits, such as Punchbowl and Queen street for instance, the disease makes its appearance.

But there is other and more direct testimony that rabbits are directly responsible for the spread of diphtheria. The central part of the State of Iowa today is suffering from an epidemic of diphtheria and it is the opinion of many physicians who have investigated it that rabbits are spreading it. Some time ago it was noticed that hundreds of the bunnies were dying of a disease which doctors pronounced almost identical with diphtheria in the human family. Soon afterwards the epidemic made its appearance among the families in the locality. After examination medical authorities reached the conclusion that the germs of diphtheria were conveyed by the animals.

Taking into consideration that rabbits and diphtheria came to this city about the same time and the statements of the Iowa medical authorities there will appear to be some reason for connecting the two, at least enough to deserve investigation.

Your photos will soon be spoiled if exposed without glass over them. King Bros. have struck a very neat and inexpensive way of doing up photos which is giving great satisfaction. 110 Hotel street.

Awarded  
Highest Honors—World's Fair.  
Gold Medal, Midwinter Fair.

DR.  
**PRICE'S**  
CREAM  
BAKING  
POWDER

A Pure Grape Cream of Tartar Powder.  
40 YEARS THE STANDARD.



**Just Received Ex "Mauna Ala."**

A NEW STOCK OF

**Hay, Bran, Barley,  
Surprise Oats, Wheat,  
Middlings and Cracked Corn.**

We have also received a fresh supply of

**Port Costa and Starr Flours.**

**California Feed Company**

Telephone 121. Queen Street.

**SCALES OF ALL SORTS**

Specially convenient ones for the household with a plain dial to indicate weights.

**SPRING BALANCES**

Also among countless other items in the way of "spring things." We want you to become familiar with our "weights" at

**E. O. HALL & SON,  
Limited.**

**This Space Reserved**

FOR

**The Manufacturing Harness Co.**

TELEPHONE 228. FORT & KING STS. P. O. Box 322.

We Make a Specialty

OF THE CELEBRATED

**"Sir Morrel Mackenzie" Pipes.**

(Non-Nicotine.)

Which we keep in large variety. We also keep in stock, the FINEST BRANDS OF

**Havana and Manila Cigars,  
Pipe, Cigarette and Chewing Tobaccos**

and are receiving fresh stock by every steamer. We are the oldest Reliable Tobacconists in Honolulu.

**HOLLISTER & CO.,**

Corner Fort & Merchant Streets.

**SUPREME COURT DECISION**

The Two Murderers of Dr. J. K. Smith Must Hang.

All the Exceptions Taken by Defendants' Attorneys Are Unanimously Overruled by the Court.

The Supreme Court decision in the appeal of Kapea and Kaio was filed too late yesterday afternoon to allow of more than the bare fact that all the exceptions had been overruled being printed in this paper.

The decision is from the pen of the Chief Justice and is concurred in by his associates. It is quite elaborate and contains an exhaustive citation of authorities to substantiate the ruling of the Court on the legal points involved. The opinion concludes with this decisive statement: "On a careful examination of all the evidence and papers in the case we find the defendants had a fair trial and every reasonable opportunity afforded them for their defense, and the law which has been violated must take its course."

The legal points decided in this case are important as laying down the law for the trial of murder cases in the future. They are contained in the syllabus of the decision as follows:

1. Special terms of the Circuit Court when called in pursuance of and in accordance with the statute, have jurisdiction to try all indictments presented, whether presented at a previous regular term or not and though the accused had been committed to be tried at a term subsequent to the special term. District magistrates should commit accused for trial at the "next term" of the Circuit Court and not designate the date of the term.

2. An indictment for murder in the first degree describing the offense is not fatally defective because in its conclusion it does not name the deceased.

3. Where one has been tried by an impartial jury, the disallowance of a juror for a cause of questionable sufficiency is not ground for reversal; nor when a juror once accepted is thereafter challenged peremptorily; nor when once accepted he is recalled to answer questions suggested either by the juror himself or from the examination of other jurors, and is therefore challenged peremptorily or excluded by the Court, provided the jury is not sworn and no evidence has been taken.

4. It is not reversible error for the Court to decline to order the Marshal to allow counsel for defense to have a private interview with certain witnesses for the prosecution who are in custody of the Marshal held under a statutory commitment.

5. Questions on the redirect may be allowed in the discretion of the Court to enable the witness to make his meaning clear, though not directly connected with any matter brought out on the cross-examination, the witness having admitted that he had told some untruths in his previous testimony.

6. Where evidence has been introduced on behalf of defense without objection and undisputed by the prosecution showing the commission of larceny by a witness for the prosecution of the goods of one of the family of defendants and the demand of a certain sum of money to stop prosecution was paid by the said witness, it is harmless error to forbid further evidence on the facts of the larceny, there being no express proof of ill will or bias on the part of the witness towards or against the owner of the goods stolen.

7. Admissions of a defendant that he opposed and forbade the commission of murder is admissible as evidence of his knowledge of the intention to commit the murder.

8. On the trial of a person for the offense of murder in the first degree, where there is no evidence upon which the jury can find the defendant guilty of an offense of a lesser degree than the one charged, it is not error to charge the jury that if they believed the evidence of the prosecution they should find the defendant guilty of murder in the first degree or not guilty if they disbelieved the evidence.

9. By statute questions of law are for the Court and the instructions of the Court in relation to the law are binding on the jury.

10. The statute requires that in a capital case at least 48 hours shall intervene between a verdict of guilty and the sentence. The term of the Court would expire by limitation within 48 hours after verdict. Held, it was not error to postpone the rendition of sentence to the next term of the Court.

YOU CAN BUY CHEAPER GOODS MOST ANYWHERE THAN HERE.

**LEWIS & CO.**

HOW DID WE GET SUCH A BIG BUSINESS? ASK OUR CUSTOMERS.

**LEWIS & CO.**

MOST EVERYTHING YOU EAT CAN BE ADULTERATED. BETTER DEAL HERE.

**LEWIS & CO.**

FOOD NOVELTIES ARRIVING DAILY. COME TO SEE THEM.

**LEWIS & CO.**

NEW NUTS, RAISINS, FIGS, DATES, ETC., AND SWEET MEATS NOW.

**LEWIS & CO.**

**Double Tel. No. 240,**

**LEWIS & CO.**

TIME OF YEAR TO ENTERTAIN, YOU NEED US NOW.

**LEWIS & CO.**

YOU MAY GET GOOD GROCERIES ELSEWHERE BUT YOU ARE SURE OF THEM HERE.

**LEWIS & CO.**

TEA CRANKS AND COFFEE CRANKS CAN BE PLEASED HERE.

**LEWIS & CO.**

EVERY FOOD PRODUCING NATION IS REPRESENTED HERE.

**LEWIS & CO.**

**David Dayton,**

Real Estate Broker.

209 1/2 Merchant Street.

FOR SALE.

12 Chinese Granite Hitching Posts; \$8 each.  
1 Surrey in fine order; price \$200.  
House and Lot, 75x155 ft., on No. 71 Young street; parlor, 3 bedrooms, kitchen, dining-room, etc.

To My Patrons and the Public.

Having recovered from my recent illness, I am again prepared to do all kinds of Tinsmith and Plumbing work as heretofore. Thanking you for past favors, I respectfully solicit a continuance of the same.

**JAS. NOTT, Jr.**

Tel. 844.

Real Estate Transactions

Subscribers are furnished with from five to six lists per week, giving an accurate record of all deeds, mortgages, leases, releases, powers of attorney, etc., etc., which are placed on record.

Subscription Price, \$2.00 per Month.

**A. V. GEAR,**

210 King St, Honolulu.

**J. S. WALKER,**

GENERAL AGENT FOR HAWAIIAN ISLANDS

Royal Insurance Company.  
Alliance Assurance Company.  
Alliance Marine and General Assurance Company.  
Sun Life Assurance Company of Canada.  
Wilhelms of Magdeburg Insurance Company.  
Scottish Union and National Insurance Company.

Room 12 Spreckels Block, Honolulu, H. I.

**J. A. FARIA,**

206 Hotel Street,

IS READY TO MAKE

**ALL KINDS OF SUITS**

from \$16 to \$18.

Money returned if you are not satisfied. All work guaranteed.

**BRUCE CARTWRIGHT,**

General Manager of

The Equitable Life Assurance Society

Of the United States for the Hawaiian Islands.

Office: Merchant street, Honolulu.

The Evening Bulletin, 75 cts. per month.

**FOR SALE!**

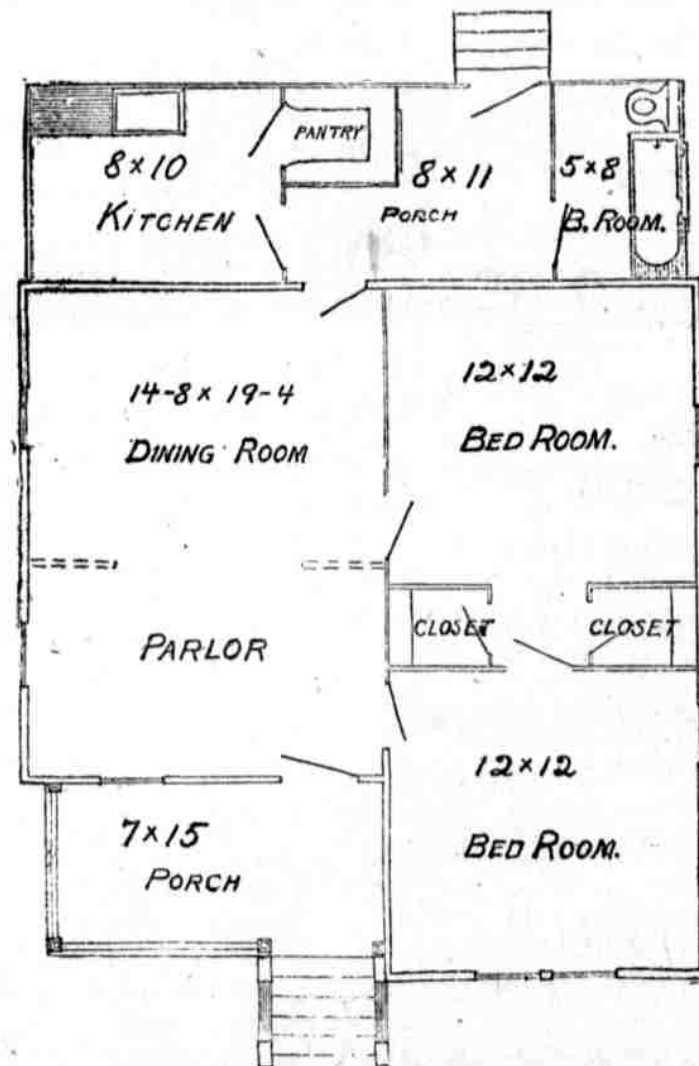
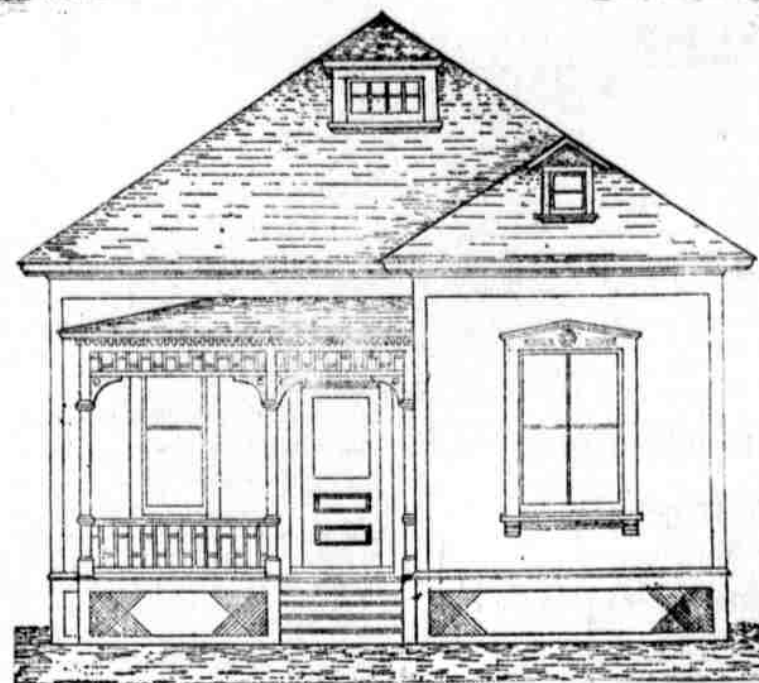
**Pleasantly Located Lots**

**On King St., near Waikiki Road**

WITH

**Double-walled, Well-built  
Modern Cottages.**

Artesian Water with Title of Property. For cash or on the instalment plan.



**GEAR, LANSING & CO.,**  
210 King Street.

**Some Time  
Some Place  
Some One**

may offer you better opportunities than we are doing just now, but in the meantime you had better take advantage of what is right here, right now.

**Self Praise is 'Half Scandal**

we know, but at the same time we must claim that we do know just what is wanted for this place, and we keep just that kind of goods.

**A. E. MURPHY & CO.**

205 Hotel St., Arlington Block.



A RARE OPPORTUNITY

A Leasehold For Sale.

At a very low figure, 1500 acres of land in the District of North Kona; 158 are subleased to responsible parties at a good rental; 200 acres are planted with coffee, in good condition, from 2 1/2 to 4 1/2 years old; 50 acres are in old coffee, and all of the remaining 1,100 acres are suitable for the planting of coffee.

The party purchasing will only be liable for the taxes on improvements on the property, no rental to be paid.

This is a splendid chance for a party with the necessary capital to make an investment that is sure to bring a large return on the money invested, as you have in this tract all climates and elevations suitable for all kinds of coffee.

For further particulars, apply to Geo. McDougall & Sons, Kailua, North Kona, Hawaii. P. O. Box 3. 798-1m

CLAUS SPRECKELS. WM. G. IRWIN.

Claus Spreckels & Co. BANKERS.

HONOLULU H. I. San Francisco Agents—THE NEVADA BANK OF SAN FRANCISCO.

DRAW EXCHANGES ON SAN FRANCISCO—The Nevada Bank of San Francisco. LONDON—The Union Bank of London, Ltd. NEW YORK—American Exchange National Bank. CHICAGO—Merchants National Bank. PARIS—Comptoir National d'Escompt de Paris—Dresdner Bank. HONGKONG AND YOKOHAMA—Hongkong & Shanghai Banking Corporation. NEW ZEALAND AND AUSTRALIA—Bank of New Zealand. VICTORIA AND VANCOUVER—Bank of British North America.

Transact a General Banking and Exchange Business. Deposits Received. Loans made on Approved Security. Commercial and Travelers Credits Issued. Bills of Exchange bought and sold. COLLECTIONS PROMPTLY ACCOUNTED FOR

The ... Hawaiian Electric Company,

Cor. Alakea & Halekuanila Sts. Has a large assortment of Chandeliers and Electrical Goods Constantly on hand.

Estimates given for house wiring and Electrical plants. Marine Wiring a specialty.

THEO. HOFFMANN, 52-54 Manager.

Pioneer Building and Loan Association.

Assets July, 1897, \$118,768.25. Money Lended on Approved Security. A Savings Bank for Monthly Deposits. Houses Built on the Monthly Installment Plan. Fifteenth Series of Stock now open. For further particulars apply to A. V. GEAR, Secretary. Chamber of Commerce Rooms. Office hours, 12:30-1:30 P.M. 373-4

BISHOP & CO. BANKERS.

Transact a General Banking and Exchange Business. Commercial and Traveler's Letters of Credit issued, available in all the principal cities of the world.

JAS. F. MORGAN, AUCTIONEER AND STOCK BROKER No. 45 Queen Street. Expert Appraisal of Real Estate and Furniture.

LAI SING KEE, Dealer in Bath Tubs, Kitchen Utensils, Tinware, Lamps, Etc. PLUMBING A SPECIALTY. No. 324 Nuuanu Street. 715-6m

The baking powder that does the most work to the cent.

Schilling's Best—at your grocer's.

The Yokohama Specie Bank

LIMITED. Subscribed Capital.....Yen 12,000,000 Paid Up Capital.....Yen 7,500,000 Reserve Fund.....Yen 5,464,500

HEAD OFFICE, YOKOHAMA.

BRANCHES AND AGENCIES. Kobe, London, Lyons, New York, San Francisco, Shanghai, Bombay, Hong Kong. Transacts a General Banking and Exchange Business Agency Yokohama Specie Bank New Republic Building, 111 King St., Honolulu

S. KICHI, (Japanese) Sign Painter & Paper Hanger

133 Nuuanu Avenue, Honolulu, H. I.

S. IWASHITA, Watchmaker, Gold & Silversmith.

No. 417 Nuuanu street, next to Love's Bakery. CHEAPEST IN TOWN

New House Furnishing Store SING CHAN CO

109 King St., near Maunakea. TELEPHONE 945. P. O. BOX 222.

Tinware, Glassware, Chinaware, Hardware,

Stoves and House Furnishing Articles of all kinds. We are prepared to do First-class Plumbing and Tinsmithing 742 3m

NEW STORE.

Imported Dry Goods, English, American and Chinese. Dress Making a Specialty. Low Prices to suit the times. Come in and see our New Stock and Store.

Wing Hing Loy

Nuuanu near Hotel street, opposite W. W. Ahana. TELEPHONE 157. This firm was formerly known as "Shun Loy," Fort street.

Yee Sing Tie

Large Wicket Chairs of the Latest Styles Furniture of all kinds. Fort Street, opp. Club Stables

Honolulu :: Coffee :: Mills

HAVING ESTABLISHED A MODERN plant for hulling, polishing and sorting coffee, we are prepared to buy and clear coffee in the parchment.

Moderate Charge Made For Cleaning Coffee!

Apply to H. HACKFELD & CO., Ltd. 85-8m

The Honolulu Sanitarium

1092 King Street. A Quiet, Homelike Place, where Trained Nurses, Massage, "Swedish Movement," Baths, Electricity and Physical Training may be obtained. DR. C. L. GARVIN, In Charge. Telephone 639.

Wilder's Steamship Co's

LIMITED. TIME TABLE. C. L. WIGHT, Pres. S. B. ROSE, Sec. Capt. J. A. KING, Port Supt.

Stmr. KINAU, CLARKE, Commander,

Will leave Honolulu at 10 A. M., touching at Lahaina, Maui, and Makena the same day; Mahukona, Kawaihae and Lanipahoehoe the following day, arriving at Hilo the same evening.

Table with columns LEAVES HONOLULU and ARRIVES HONOLULU. Rows include dates from Feb 15 to Mar 18.

Returning, will leave Hilo at 1 o'clock P. M., touching at Laupahoehoe, Mahukona and Kawaihae same day; Makena, Maui Bay and Lahaina the following day; arriving at Honolulu the afternoon of Tuesday and Friday. Will call at Pohokiki, Puna. No Freight will be received after 9 A. M. on day of sailing.

Stmr. CLAUDINE, CAMERON, Commander,

Will leave Honolulu Tuesday at 5 P. M., touching at Kahului, Hana, Hamoa and Kipahulu, Maui. Returning arrives at Honolulu Sunday mornings. Will call at Nuu, Kaupo, on second trip of each month. No Freight will be received after 4 P. M. on day of sailing.

This Company will reserve the right to make changes in the time of departure and arrival of its steamers without notice and it will not be responsible for any consequences arising therefrom. Consignees must be at the Landings to receive their Freight; this Company will not hold itself responsible for freight after it has been landed. Live Stock only at owner's risk. This Company will not be responsible for Money or Valuables of passengers unless placed in the care of Purser. Passengers are requested to purchase tickets before embarking. Those failing to do so will be subject to an additional charge of twenty-five per cent.

Advertisement for Vapor-Resolva medicine, featuring an image of the product and text describing its benefits for cough, asthma, and other ailments.

Ivory Ware Lacquer Ware Silver Ware Crockery Ware

Wing Wo Tai & Co. 214 Nuuanu Street. AMERICAN LIVERY AND BOARDING STABLES. Corner Merchant and Richards Sts. CARRIAGES, SURREYS and HACKS at all hours. TELEPHONE 490.

DEATH OF A NOTABLE MAN

The "Father of the House of Commons" is No More.

Charles P. Villiers Had Sat Continuously in the Lower House of Parliament Since 1835.

Right Hon. Charles Pelham Villiers, member of Parliament from South Wolverhampton and known as the "Father of the House of Commons," having sat continuously in the house since 1835, died at 9 o'clock on the night of January 16 in London.

Charles Pelham Villiers was the third son of Hon. George Villiers. The London papers on January 4 said that on the previous day Mr. Villiers celebrated his ninety-sixth birthday and received congratulatory messages from all parts of the kingdom.

In addition to being the oldest member of the House of Commons he was "father of the English bar," being admitted at Lincoln in 1827. Mr. Gladstone, seven years the junior of Mr. Villiers, entered Parliament two years before him, but while the service of Mr. Villiers at Westminster had been continuous that of the great Liberal statesman was broken when he retired from the House of Commons. Mr. Villiers was returned for Wolverhampton three years after the passage of the great reform act by the last Parliament of George IV. Besides being the oldest member of Parliament he was the oldest surviving parliamentarian candidate.

It was in 1826, when George IV was King and Victoria was a young child, that he traveled down into Yorkshire from London and contested Kingston-upon-Hull, under the reform banner of Canning, though unsuccessful. In 1853 he was appointed Judge Advocate-General. In 1879 his admiring constituents at Wolverhampton unveiled a marble statue of Mr. Villiers, when speeches in eulogy of his public service in connection with the anti-corn law movement were delivered by Earl Granville and Sir Robert Peel.

Notwithstanding his extremely advanced age his memory was singularly retentive, and he was able to entertain his friends for hours at a time with lively and charming narratives of scenes in the House of Commons during the first half of the century. Canning had passed away eight years before Mr. Villiers entered Parliament, but the two often met. He often went to the House of Commons to hear Canning speak and he invariably described him as a wonderful orator.

Among the famous personalities he could recall and vividly portray were the great Sir Robert Peel, Lord Melbourne, Lord John Russell, Lord Derby, Lord Aberdeen, Lord Brougham, the Duke of Wellington, Daniel O'Connell, Hume, Grote, and of course, Disraeli. He always delighted to recall the circumstances in the House when Disraeli, who was then quite a young man, made the celebrated speech in which he said that one day the House would be compelled to listen to him. Among interesting events which he witnessed was the attack by the mob on the house of the Duke of Wellington, and he clearly recalled the excitement over the Duke's duel in a London suburb with Lord Winchelsea, which arose out of his lordship calling the Waterloo hero a traitor in connection with Roman Catholic emancipation.

Skilled Specialists are the only artists employed at the Criterion Barber Shop. No higher class work in the city.

Window poles and fittings. King Bros., 110 Hotel street. For a nice clean shave drop in at the "Elite Barber Shop," King street, near Alakea.

Every family that can afford to have any beer at all can afford to have Rainier. It is the healthiest beer in Seattle and the healthiest is always the best. Tele. 783, Criterion Saloon.

The Remington Typewriter

..... HAS BEEN AWARDED A .....

Diploma of Honor

..... AT .....

BRUSSELS EXPOSITION OF 1897.

This is the HIGHEST POSSIBLE AWARD, ranking above a Gold Medal.

H. HACKFELD & CO., LTD

Sole Dealers.

Oceanic Steamship Company.

TIME TABLE.

The Fine Passenger Steamers of This Line Will Arrive at and Leave This Port as Hereunder.

From San Francisco: For San Francisco:

Table with columns for ship names and dates. Includes ALAMEDA, AUSTRALIA, AUSTRALIA, MOANA, MARIPOSA, and AUSTRALIA.

In connection with the sailing of the above steamers, the Agents are prepared to issue, to intending passengers, coupon through tickets by any railroad from San Francisco, to all points in the United States, and from New York by any steamship line to all European ports.

For further particulars apply to

Wm. G. Irwin & Co., Limited,

General Agents Oceanic S. S. Co.

WE ARE SOLE AGENTS FOR

VERONICA :: WATER!



A NATURAL MEDICAL SPRING WATER

for Indigestion, Liver Complaint, Diseases of the Kidney and Bladder, Skin Eruptions, Etc., Etc.

Benson, Smith & Co.,

Corner Fort and Hotel Streets.

Since We Must Eat to Live, Let's Have the Best.

Just Opened Up an Invoice of ...

SCHILLING'S BEST TEAS

..... CONSISTING OF .....

Japan Flavor, English Breakfast and Ceylon. Also,

SCHILLING'S BEST BAKING POWDER.

Give them a trial. Money back if you don't like them. Also, just received

Choice Block Butter, Kits Creamery Butter, Fidelity Brand Bacon, Hams, Crackers and Cakes, Mild Cheese, Smoked Beef, Choice Humboldt Potatoes, Etc., Etc., Etc.

Chas. Hustace,

212 King street, next to the Arlington.

TELEPHONE 92 - P. O. BOX 148

H. E. McINTYRE & BRO.,

- IMPORTERS AND DEALERS IN -

Groceries, Provisions and Feed.

New Goods Received by Every Packet from the Eastern States and Europe;

FRESH CALIFORNIA PRODUCE BY EVERY STEAMER

All Orders faithfully attended to and Goods Delivered to any Part of the City FREE.

ISLAND ORDERS SOLICITED. SATISFACTION GUARANTEED. EAST CORNER FORT AND KING STREETS.



EVENING BULLETIN.

A. V. GEAR, Publisher and Proprietor
DANIEL LOGAN, Editor
C. A. PETERSON, Manager

FRIDAY, FEB. 4, 1898.

There was a silver lining in
dead to the sun's eclipse in India,
for a batch of fifty prisoners
whom the superstitious authorities
released, presenting them
with new clothes besides.

Among the "musis" for the
Legislature may well be regarded
provision for a good and adequate
water supply for Honolulu. The
growth of the town has been and
promises to be such as to far out-
run the present system of water
works. Water of good quality
and in ample quantity is a neces-
sary for Honolulu only second to
air in importance. By hook or
by crook the system must be kept
in advance of the town's develop-
ment.

As a direct result of recent tariff
legislation in the United States
against foreign sugars other than
Hawaiian the importations of that
commodity have rapidly fallen
off. The total imports of sugar
at Boston, New York, Philadel-
phia, Baltimore and San Francis-
co during December last, exclu-
sive of Hawaiian sugar which is
duty free, amounted to 100,132,
148 pounds, valued at \$1,923,793
This is a decrease from the pre-
ceding month of about 23,270,000
pounds.

People are left no ground of
questioning what is the use of
such an organization as the Uni-
versity Society, when it brings
face to face with the community
one of the most industrious, con-
scientious and illustrious scien-
tists of the age. To see and hear
a scientist of the personal charm
and intense enthusiasm of Pro-
fessor Agassiz cannot fail to pro-
mote a popular love of science.
He has so complete a mastery of
his especial subject, moreover, as
to obviate all necessity of passing
his utterances through any popu-
larizing alchemist.

"Fifty Years of Masonry in Cal-
ifornia" is the title of a work be-
ing brought out in twenty month-
ly parts by Geo. Spaulding & Co.,
San Francisco. It is being handled
here by the Hawaiian News Co., to
whom the BULLETIN acknowledges
Part No. 1. The work is superbly
printed and illustrated, indeed it
is doubtful if the engravings have
ever been surpassed in black and
white. No. 6 is to have a history
of the masonic order in the Ha-
waiian Islands. Local masons will
doubtlessly snatch the work up with
avidity. The editor is Edwin A.
Sherman, 33rd degree, Venerable
Grand Secretary of the Masonic
Veteran Association of the Pacific
Coast.

Secretary Chamberlain has an-
nounced the British Government's
policy regarding the importunity
of the West Indies for relief from
long depression in the sugar in-
dustry. As will be seen by the
report elsewhere, countervailing
duties to offset continental boun-
ties would not do, as they would
damage a vastly larger trade than
the West Indian proposed to be
helped. Besides, they would
violate the fixed national policy
of free trade. The remedy is
straight alms to the distressed
planters. As between this and
the abhorred bounty there seems
to be only a distinction without a
difference. But something had
to be done, and results will be
watched by the sugar world with
interest.

Curious it is that the Advertiser
should repeat the very error that
the BULLETIN corrected on its own
part only the other day. Previous
accurate knowledge had been

displaced by an impression form-
ed from a condensed cablegram
in a Sydney paper announcing
the passage in the French parlia-
ment of the "Tahiti annexation
bill." As here stated on the re-
cent occasion noted, Tahiti, or
the Society Islands, had been a
French colony, and not a
mere protectorate, for many
years. The annexation now
made is of a little neigh-
boring archipelago, which be-
comes an integral part of the
French possession of Tahiti.
The islets taken over had been
under a French protectorate, in
that state giving France much
trouble. Military expeditions had
been necessary to suppress out-
breaks. They are the islands
where, it will be remembered,
natives, incited thereto by some in-
fluence or other, a year or two ago
hoisted the British flag only to
have it shot down by a French
war vessel.

HOW CORAL REEFS COME.

Continued from First Page.

Prof. Agassiz is a charming
speaker, pleasing in manner and
fluent in utterance. He uses sim-
ple language, never wants for a
word, is "clear as a bell."

When the lecturer sat down he
was warmly applauded by the
audience, who had evidently hung
with intense interest upon his
every sentence.

Chief Justice Judd, in propos-
ing a vote of thanks, facetiously
said that Prof. Agassiz had kept
them "on the reef" for an hour
and a quarter.

CAMPBELL'S ROOF PAINT.

New Concern Making Strides With
Improved Material.

David A. Campbell has his men
engaged today laying a coat of
Black Diamond roof paint on the
awning in front of McInerney's
store. This paint is made from
best refined asphalt, prepared and
tempered without oil, and gives a
perfect protection to iron, tin,
shingle and paper roofs. A satis-
factory guarantee for three years
is given in all cases.

Aside from the roof paint Mr.
Campbell handles the Albright
Dust-layer for floors. This pre-
paration removes the necessity of
sprinkling or the use of saw dust.
About 25 contracts have already
been satisfactorily fulfilled in this
city. Another special device for
schools, hospitals and private
houses is what is known as Im-
pervious Floor Paint. A single
application of this material will
last two years.

BENEFIT TO MR. MARTIN.

The Elite of Honolulu Will Attend the
Circus this Evening.

This is the evening of the great
benefit entertainment at Will-
ison's circus. The program will
be witnessed by the best people
of the city. German Consul J.
F. Hackfeld has been added to
the list of guests of honor. The
Hawaiian band will present stir-
ring airs during the progress of
the entertainment.

The performance will be a
benefit to Mr. Martin, manager of
the company, a man most popular
with the troupe under him as
well as with everyone who knows
him well. Doors open at 7:30;
performance at 8 o'clock. Seats
may be reserved at the store of
the Wall, Nichols Company.

Dog, Wheel, Man, Road.

Attorney-General Smith is bat-
tling with a most vexatious prob-
lem. He has a kick from a citi-
zen cyclist who has, while on his
wheel, been frequently set upon
by a dog. The animal is licensed;
the wheel is paid for; the road is
good, and the man, who has paid
his taxes, is very mad. Which
should be punished and how—
dog, wheel, road or man?

Rubber Tires for \$80.

A lot of buggy and wagon rubber
tire wheels arrived by the Aus-
tralia for John Wilson. They were
opened at the shop on Queen
street today. While the invoice is
not yet here George Dillingham
stated this noon that the wheels
would be sold for not over \$80 for
a set of four.

CROSS-ROADS OF THE PACIFIC.

United States Must Hold the Islands to
Protect Its Commerce.

The time is coming fast when
the commerce of the Pacific Ocean
will be quite as important to us
as that of the Atlantic has been
in the past, and wise foresight de-
mands that we shall take all ne-
cessary steps to protect our pres-
ent and future interests in that
direction. The Hawaiian Islands
are the cross-roads of the com-
merce of the Pacific between the
American Continent, the Orient
and Australia, and in case of pos-
sible conflict between some of the
great Powers it would be a great
advantage to our peace and safety
to hold undisputed possession of
a strategic point of such immense
importance. The annexation of
Hawaii would have been accom-
plished four years ago but for the
arbitrary and unjustified action of
President Cleveland in withdraw-
ing the treaty pending in the
Senate when he began his second
term, but it is pleasing to know
that he only succeeded in delay-
ing and not in defeating that wise
power.—Denver Republican.

WAVERLEY SOCIAL CLUB.

A Social Medium Between the Y. M.
C. A. and the Saloon.

The Waverley Club, which
was successfully launched this
week, is distinctively a social
organization. It will have nothing
to do with religion nor
politics. Its object will be the
elevation of its members, morally,
socially, intellectually. As such
it will form a medium between
the Y. M. C. A. and the saloon.
In it members will find a most
attractive and beneficial place to
spend their evenings.

An excellent reading room will
be maintained. Innocent games
will be promoted and encouraged.
Every feature of the club will be
made as complete and pleasant as
possible. The membership is
made up largely of men who have
long stood in need of just such a
resort.

FOR A GREATER HARBOR.

Another Line of Clipper Ships to Call
at This Port.

Another illustration of the in-
creased demands on the harbor
space of Honolulu and the neces-
sity of enlarging it to prepare for
future trade is shown in the state-
ment that the Atlantic and Pacific
Company, which operates the Ar-
gonaut line of clipper ships be-
tween Philadelphia and the Paci-
fic Coast, proposes to establish a
clipper ship line from Baltimore
and New York to the Pacific
Coast and Honolulu in the near
future. Arrangements to that
effect are being made.

Young Hawaiians Meet.

At a meeting held last evening
the Young Hawaiians' Institute
decided to fix its dues at \$1 per
month. A proposal was made
to raise the sick relief pro rata from
50 cents to \$1 a day. A badge for
the Institute was adopted. There
were 28 members present at the
meeting. Several new applications
for membership were received.

Auction Sales by Jas. F. Morgan.

AUCTION SALE OF
Household - Furniture

TO-MORROW, Feb. 5th,

AT 10 O'CLOCK A. M.,

At my Salesroom, Queen street, I will
sell at Public Auction, a Fine Line
of Household Furniture,
comprising

Elegant B. W. Bedroom Sets,

Fine Oak Bedroom Sets,
Single Oak Bedroom Sets,

Wire and Straw Mattresses,

A Large Variety of

FINE RUGS and CARPETS,

Oil Paintings, Engravings,
3 New Refrigerators, Etc., Etc.

JAS. F. MORGAN,

629-14

Auctioneer.

Timely Topics

February 4, 1898.

We have not been saying
much about BICYCLES lately,
as we have been waiting for
the

1898 TRIBUNE

We have them now, but
only a few of them have come
to hand and they are going
very rapidly. We have several
styles of

TRIBUNES

—AT—

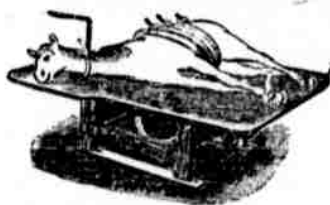
\$65, \$85,
\$100, \$110.

These latter are RACERS.
The \$65 and \$85 grades are

Equal to Any First-class Wheel
in the Market.

THE
Hawaiian Hardware Co,
LIMITED,
NO. 307 FORT STREET,
Opposite Spreckels' Bank.

J. R. Shaw, D. V. S.



Office and Infirmary, - - 863 King St.

TELEPHONE 796.

Modern and Humane Treatment.

Notice.

Any party or parties are hereby not-
ified not to dig any Manille Grass on
any Government Roads or Sidewalks
without a written permit from the Road
Supervisor of Honolulu. Any party or
parties caught hereafter digging Man-
ille Grass on the Government Roads or
Sidewalks will be prosecuted according
to law.
W. H. CUMMINGS,
Road Supervisor, Honolulu,
February 1, 1898. 827 1/2

The Evening Bulletin, 75 cts. per
month.

By the "Australia"

— A LARGE LINE OF —

Stair Carpets, Smyrna
Rugs,
Silk Portieres, Jute Por-
tieres,
Lace Curtains, Tapestry
Portieres,
Table Covers and Dra-
peries,
Silk Laces, Blonde Laces,
Thread Laces,
Chantilli Laces, etc,
Percales, Lawns,
India Linens, Organdies,
Etc., Etc., Etc.

J. J. EGAN,

Fort Street.

JUST OUT!

"Hawaii, Our New
Possession."

By JOHN R. MUSICK.

We are Sole Agents for this
Book, and are now taking
subscriptions for it.

Bound in Cloth... \$2.75
Bound in Half
Morocco..... \$4.00

Hawaiian News Company,
Merchant Street.



A TRIAL OF THIS
Dandruff Killer

Will convince you that it is all
that we claim it to be.

Warranted to Cure!

FOR SALE ONLY BY

Pacheco & Fernandes,
Arlington Block, Hotel Street.

N. FERNANDEZ
NOTARY PUBLIC and TYPEWRITER

Office: 208 Merchant street, Camp-
bell Block, rear of J. O. Carter's office.
P. O. Box 336.

Jones on a Sterling
Wins Mile Open.



Section
of
Sterling
Chain.

Pacific Cycle & Manufacturing Co

Ehlers Building, Fort St.

Repairing a Specialty.

HAVING BEEN APPOINTED

SOLE AGENTS

FOR THE

Portland
Flouring
Mills

We now offer their Brands
of Flours as follows:

CASCADIA,
DAYTON,
C. & C.,
OLYMPIC and
SUPERB.

H. Hackfeld & Co.
Limited.

WILLISON'S
CIRCUS

Tonight, Friday,

"Great Fashionable Night."

Benefit Tendered to Our Manager

Under the Distinguished Patronage
of Capt. J. A. King, Minister of In-
terior; Admiral Miller, U. S. S. Bal-
timore; U. S. Consul-General Hay-
wood, H. B. M. Commissioner Ken-
ny, H. Hackfeld, German Consul;
Chinese Commercial Agent Goo Kim,
and other Prominent Citizens.

Extra Attractions:

MISS ANNIE KANOHO has kindly
volunteered to sing at the performance.
PROF. BERGER has courteously per-
mitted the Government Band to volun-
teer their services for

Martin's Benefit Tonight.

NO ADVANCE IN PRICES!
Chairs, \$1.00; Gallery, 25c.

Seats Reserved at Wall, Nichols Co.
No extra charge.

Two Performances Saturday!

Valentines!

A NEW ASSORTMENT OF

ARTISTIC PRODUCTIONS

FROM THE.....

International Art Publishing Company.

No Comic Vulgarities.

Thos. G. Thrum,

STATIONER, ETC., ETC.

Brewer's Block : : : Fort Street.

Evening Bulletin 75c per month.



**LOCAL AND GENERAL.**

Benefit Circus this evening.  
 Mail for the Const per Australia at 4 p. m. tomorrow.  
 Skilled specialists only are employed at the Criterion Barber shop.  
 The band will play for the benefit entertainment at the circus this evening.  
 John Ashworth left by the Mariposa. He may go to the Klondike.  
 Pacific Lodge, Masons, will have work in the second degree this evening.  
 Shingles are going to advance in price, according to late Washington State news.  
 Two picked teams will play a match game of handball in the Y. M. C. A. this evening.  
 A good driving and saddle horse, phaeton, harness, saddle, etc., offered for sale by L. D. Timmons.  
 Beautiful native wood calabashes, napkin rings, paper knives, etc., at the Golden Rule Bazaar.  
 The anniversary dance of the Myrtle Boat club has been postponed to Friday evening, February 11.  
 The largest and best assortment of Hawaiian fans will be found at the Golden Rule Bazaar.  
 James F. Morgan sells furniture at his auction rooms tomorrow at 10 o'clock. Good articles and bargains.  
 Company D will hold its annual meeting this evening at which civil officers and committees will be selected.  
 Orders solicited for special menu or dinner cards, done in water colors or oils. King Bros., Hotel street.  
 The circus gave a fancy street parade this morning. A detachment of the band accompanied the procession.  
 Nearly 70,000 tons of cork are needed for the bottled beer and aerated waters consumed annually in Great Britain.  
 C. Hedemann left for plantations on Maui and Hawaii this morning on special business for the Honolulu Iron Works.  
 H. S. Cane and Manley Hopkins are on the afternoon watch at the witchboard of the Telephone Company.  
 The correct Italian method for the mandolin is being taught by Mr. Chas. R. Frazier. Studio in Y. M. C. A. building.  
 The Hawaiian Hardware Company have received the 1898 Tribune wheels, as well as several other styles of Tribunes.  
 A real kick will be made in the Legislature for a gate at the King and Richards street corner of the Executive building grounds.  
 The Hawaiian Mission Children's Society will meet with Mr. and Mrs. A. F. Cooke, King street, at 7:30 tomorrow evening.  
 Commodore Fort and Captain Pugibet, with their staff officers, paid an official visit to the Minister of Foreign Affairs this morning.  
 The assault and battery charge preferred by J. H. Schnack against Robert W. Wilcox was nolle pross'd in the police court this morning.  
 A secret is made of the names of the committeemen—and women—in charge of the Kiloahana Art League's stories, submitted in the prize competition.  
 Gold dust sells for \$1.50 a pound at the Pacific Cycle and Manufacturing Company. That is Gold Dust smokeless shot-gun powder. The best manufactured.  
 Minister King is hurrying up his report, which was delayed by the failure of Superintendent Rowell to have his data in as early as it ought to have been.  
 A telephone message states that the salute of the French warship this morning was a jollification blast on account of a decision of Captain Pugibet to allow his officers to attend the circus benefit this evening.  
 Chas. S. Wheeler, a prominent San Francisco attorney, came down with Rudolph Spreckels on a short visit to the Islands. Mr. Wheeler was one of the principal attorneys on the side of the Fair estate in the recent great will contest.

Chicken dinner at Occidental tomorrow.  
 No Myrtle dance tonight. It has been put off to some evening next week.  
 Wanted—A good second hand bicycle, 22 inch frame preferred. Leave description and price at this office.  
 Judge Wilcox's duties in the police court this morning consisted principally of reprimanding a couple of boys for truancy.  
 Tennis players are invited to call and examine the elegant line of Genuine English made tennis rackets at the Golden Rule Bazaar.  
 For lowest prices, best qualities, polite attention and prompt delivery, try the New Grocery Store, J. Hutchings, 627 Fort street. Tel. 358.  
 Leis, cutflowers and floral pieces, furnished on short notice and delivered. Mrs. A. L. King, at Woman's Exchange. Telephone 659. House Telephone 394.

**MISS ANNA CABILL.**

Died at the Kellogg Sanitarium Early Last Night.  
 Miss Anna Cabill, the Hotel street milliner, died at the Kellogg sanitarium at 6:30 yesterday afternoon after an illness of two months. She had not strength to survive an operation performed a few days before.  
 The funeral will take place from the Roman Catholic cathedral at 3 o'clock this afternoon. The body will be removed thither from the house of H. H. Williams, where the departed lady had lived for a long time. Friends are invited to attend the funeral. Interment will be in the Catholic cemetery on King street.  
 Miss Cabill was a native of Fremont, Ohio. She arrived here about five years ago to take charge of the millinery department of N. S. Seaba's business. After a trip east she returned in the spring of 1895 and opened a store of her own. She was successful in business and had many friends.  
 In her will Miss Cabill named Father Velez as administrator of her estate. The store property on Hotel street and cash goes to sisters residing at Cleveland, O., and Louisville, Ky. An insurance policy is also made out in their behalf. Personal effects are given to Miss Maggie McGregor and Miss Peters, young ladies working in the store. Miss Cabill bequeathed her bicycle to Miss McGregor.

**JOIN THE REGIMENT CLUB.**

Wilder and Lishman Will Play Ball With the Soldiers.  
 Harry Wilder and Percy Lishman will play with the Regiment baseball team this year.  
 This announcement on the inside of ball circles this morning created a ripple of excitement. Regiment players started in immediately shaking hands with one another. Gorman was so elated that he wanted to challenge the earth for a game this afternoon. Davis does not now care whether school keeps or not, and "Ginger" Mayne feels that his right arm has grown several sizes larger and longer.  
 The Honolulu team view the matter in a different light. Wilder and Lishman are much to be feared. It is a fact, however, that the Honolulu have four of the old Star players and a powerful nine. The clash between the two teams will be a meeting of giants.  
 This move kills and buries the Star team. Sam Woods, Donald Ross, Duke McNichol and a few others are all that remain. All effort from today, among players and the public, will be in the direction of organizing a new nine. This object will be carried out if a Coast pitcher has to be sent for.

**Visitors Given an Outing.**

W. A. Kinney took a party of friends down the railroad yesterday afternoon. They went out on a special car shortly after noon and returned about 5 o'clock. The excursion was given especially to W. S. McCormick and daughter, Captain Dodge and wife and other visitors from Salt Lake city, all of whom are friends of Mr. Kinney. Mr. McCormick is a banker and Captain Dodge is in the United States army. A number of city people accompanied the party.

**Just What You Want!**

**A Souvenir of Honolulu and the Hawaiian Islands!**  
 40 Beautiful Photo-Gravures,  
 1 Map of the Island Group.  
 From Latest Photos by The Davey Photo Co., Ltd, Honolulu, and J. J. Williams, Honolulu.  
 Artistically gotten up—size 9x7in. Stiff cover, handsomely embossed, and tied with silk cord. The most beautiful of Souvenir Albums yet produced.  
 Among the selection of views, we make special mention of the following: Harbor, Honolulu, (new)—Photo by Williams.  
 Punchbowl, from Tantalus, (new)—Photo by Davey.  
 Diamond Head, from Punchbowl, (new)—Photo by Davey.  
 Nuuanu Pali, (new)—Photo by Davey.  
 Kapolani Park, (new)—Photo by Davey.  
 Princess Kaiulani—Photo by Williams.  
 President Dole—Photo by Williams.  
 The price is within the reach of every one.  
**ONLY \$1.00**  
 Price post paid. In heavy manilla envelope to any part of the world, \$1.10. Country orders given prompt attention.

**WALL, NICHOLS CO.**

**Carpenter's  
 Mechanic's  
 Blacksmith's  
 Contractor's  
 Tools**

OR THE MOST APPROVED PATTERNS

**Agricultural  
 Implements,  
 Plows.**

FULL STOCKS NOW ON HAND.

**Pacific Hardware Co., Limited,**  
 Fort Street.

**BICYCLES**

RENTED, SOLD  
 —AND—  
**REPAIRED**  
 WE HAVE THE "ELDRIDGE."  
**J. T. LUND**  
 Fort St., Opp. Club Stables. Tel 398.

**For Sale.**

Good Driving and Saddle Horse, Phaeton, Harness, Saddle and Extra Bridles, Lamps, etc. Apply to L. D. TIMMONS, Bulletin Office, 829 1w.

**THE RECENT ECLIPSE.**

Scientists Succeed in Securing Photographs of Great Value.  
 Bombay, January 23.—The eclipse of the sun was accompanied by a rapid fall in temperature. An earthy smell pervaded the air and the scene resembled a landscape under a wintry English sun. The duration of the totality was two minutes, with a marvelous corona of a pale silver and blue.  
 The conditions were favorable to both Professor Norman Lockyer's camp, near Vizidroog, on the Malabar coast, and at Professor Campbell's camp, near Jour. The native astrologers predicted terrible calamities. The natives swarmed to devotional exercises and there was general fasting, but no great alarm. The Nizam of Hyderabad liberated fifty prisoners, giving each a gift of money and clothes.  
 London, Jan. 24.—The morning Post publishes a dispatch from Professor Lockyer, from Rajapur, saying that sixty spectrum photographs were secured. Some of them have been already developed and are found to exhibit changes in the aspect of the chromosphere. The dispatch says that the weather was perfect and that Lord Graham's cinematograph work proved quite successful.  
 Odessa, Jan. 22.—Owing to the bad weather all observations of the eclipse at stations in Southern Russia were partial failures.

**Everything  
 Made  
 Easy!**

Why make the little ones cry and compel them to take a medicine which is distasteful to them, when you can accomplish the desired end without it?

**Cummin's  
 Tasteless  
 Castor  
 Oil.**

The finest preparation ever introduced in the oil line, the taste pleasant, dose small and acts like a charm.

Nature's Own Cathartic.

Don't be talked into trying something that is claimed to be as good, there is but one first-class tasteless castor oil and that is CUMMIN'S.

Children Relish It.

The price is low, a bottle containing many doses at 25 cents. You cannot afford to be without it.

**Hollister Drug Co.**  
 Sole Agents.

AN IMMENSE STOCK OF  
**New Goods**

JUST ARRIVED PER S. S. "AUSTRALIA" FOR  
**N. S. SACHS,**  
 520 Fort Street, Honolulu.

**SPRING NOVELTIES**  
 New Designs! New Materials!  
**NEW MILLINERY,  
 LATEST IN RIBBONS**

These Goods will be opened in a few days.

**OPENING DAY**

**Our Grand Clearance Sale  
 MONDAY, JAN. 31.**

Doors Open at 9 O'clock A. M.

REMEMBER: That every 50 cents' worth of purchase entitles you to a Coupon in our gift of a **SPLENDID MUSIC BOX.**

**TEMPLE OF FASHION,**  
 M. G. SILVA,  
 Fort Street, Proprietor.

**You'll Be Coming Down Town  
 TOMORROW**

So Just Drop Into Our Place and Look at Our

**No. 10 Corsets**

We have them in all varieties, including  
**Summer, Winter,  
 Bicycle, Nursing,  
 Corset Waists.**

We have them in all styles, and at prices that are below anything ever heard of here before.

ALSO A FULL LINE OF

**P. D. and Prima Donna Corsets**

For MEN, and especially those who are thinking of the KLONDIKE, or who need a warm covering, we have a new lot of

**Cardigan Jackets**

Which are well worth inspection.

**E. W. JORDAN,**  
 No. 10 Fort Street.



# NOTICE!

The Mechanical Construction of the

## White Sewing Machine

Embodies more excellent and practical improvements in sewing machine mechanism than any other make.

### H. W. Schmidt & Sons,

Agents for the Hawaiian Islands.

King St., Von Holt Block.

## OLD YEAR OUT! NEW YEAR IN! LIKE OUR Suit . Club

The OLD ONE IS CLOSED and the NEW ONE JUST OPENED.

### ONLY \$1.00 PER WEEK.

For YOUR CLOTHES. NEW GOODS JUST TO HAND.

### MEDEIROS & DECKER,

The Hotel St. Tailors,

Waverley Building.

Telephone 641.

### WANTED:

## Carpenters and Painters

and all who use Ladders to call and examine, and be convinced that the . . . . .

## Bent Rung Ladders and Step Ladders

are the lightest, strongest and most reasonable in price of any on the market. . . . .

## ALL SIZES ON HAND. Lewers & Cooke.

### 'FOR SALE'

## A Lot of Extra Large Mules

AND SEVERAL FINE

## Driving Horses

They May be Seen at Rice's Stable, School Street.

Communications in regard to the same may be left at the Office of H. Waterhouse & Co.

### W. H. RICE.

782-1f

### Notice.

The STAR DAIRY COMPANY will begin delivering Nice Fresh Milk twice daily, TUESDAY MORNING, February 1, 1898. Ring up Telephone No. 1013. 825 1w

## J. T. WATERHOUSE

Queen Street.

### OUR REDUCTION SALE IS STILL GOING ON.

- Swiss Embroidery,
- Valenciennes Lace,
- Butter Lace,
- Puggarees,
- Native Hats, fine assortment;
- Gent's Alpaca Coats,
- Confection,
- Ladies' Union Suits,
- White Batiste,
- Honey Combed Quilts, plain and colored border.
- Cretones,
- Spool Silk, all shades;
- Curtain Lace,
- Embroidery Felt,
- Art Denim,
- White and Red Flannels.

## J. T. WATERHOUSE

Queen Street.

## METROPOLITAN MEAT CO.

108 KING STREET.

J. J. WALLER - - - MANAGER.

WHOLESALE AND RETAIL

### BUTCHERS

### Navv Contractors.

Refrigerated Poultry

Fresh Salmon

CONSTANTLY ON HAND.

## Metropolitan Meat Co.

Telephone 45.

## Hilo Electric Light Co., Ltd.

Tenders for Fifty (50) Shares of the Capital Stock of the above Company are called for at a minimum of \$125.00 per share.

Applications will close SATURDAY, February 19, 1898. The highest or any tender not necessarily accepted. Particulars will be furnished on application.

L. TURNER, Secretary. Hilo, Jan. 26, 1898. 823-1f

### Election of Officers.

At a meeting of the Shareholders of the Enterprise Mill Company, Limited, held January 28, 1898, at the office of the Company in Honolulu, the following persons were elected to serve as Officers of the Company for the ensuing year, viz:

- Peter High.....President
  - Bernhard Johanson.....Vice-President
  - John S. B. Pratt.....Secretary and Treasurer
  - W. F. Allen.....Auditor
- The same Officers constitute the Board of Directors of the Company.  
JOHN S. B. PRATT, Secretary.  
827-3f

### Election of Officers.

At the Annual Meeting of the Pacific Guano and Fertilizer Company held this day, the following Officers were elected to serve during the present year, viz:

- George N. Wilson.....President
  - J. F. Hackfeld.....Vice-President
  - Ed. Suhr.....Treasurer
  - H. A. Isenberg.....Secretary
  - T. May.....Auditor
- H. A. ISENBERG, Secretary.  
Honolulu, Jan. 29, 1898. 824 3w

### Notice.

Geo. Bruus is authorized to collect for the Club Stables, Ltd., until further notice. 827-3f

## MR. CHAMBERLAIN ON SUGAR

Speech at a Banquet of Liverpool Chamber of Commerce.

Many Objections to Countervailing Duties—Large Grant Promised in Aid of West Indian Planters.

At a banquet given by the Liverpool Chamber of Commerce to Right Hon. Joseph Chamberlain on the evening of January 18, in the course of his speech that gentleman defined the attitude of the British Government towards the sugar industry. He reviewed at length the West Indian question and the report of the Royal Commission thereon, and emphasized the 'great injury of the bounty system which, while raising the West Indies, brings a gain estimated at two million pounds yearly to Great Britain.'

The Government, he said, believed the country 'generous and just' enough to remedy this crying injustice. He was glad that Belgium had anticipated Great Britain in calling a conference on the subject and hoped this might succeed better than former conferences.

There were many objections, he continued, to countervailing duties, which would 'involve us in commercial treaty differences with foreign nations,' but the main objection was that while the trade they wished to save amounted to 260,000 tons, Great Britain's own sugar imports amounted to 1,500,000 tons. It seemed unscientific to benefit the former by injuring the latter.

'Therefore,' he said, 'the Government has decided to exhaust every alternative before having recourse to such drastic measures, and feeling that the recommendations of the commissioners, though good, would not work quickly enough, the Chancellor of the Exchequer has consented to propose to Parliament a very large grant in aid to the West Indies. The grant will not be so large as the incidental gain Great Britain derives from the bounty system, but it will be large enough to enable the industry and the population to tide over a crisis, until Continental nations recognize the impolicy of the bounty system.'

Mr. Chamberlain expressed his conviction that the immediate relief measures to be proposed in addition, which he said he could not as yet explain in detail, would 'stimulate the sugar industry and enable all well-managed estates to hold their own, while tending to the ultimate prosperity of the colony.'

### The Anchor.

P. F. Ryan still continues in charge of the Anchor and is ably assisted by William Carlyle. At the Anchor, Seattle beer on draught can always be had as well as the best brands of whiskies, etc., including John Dewar's Scotch whisky. A full stock of other liquors, wines, etc., is kept on hand also.

The G. B. has the best bread in town. Try it.

If you want gasoline in a hurry ring up Telephone 907.

Does your wife love you? She does. That's good; and so is Rainier Beer. Loved not only by your wife, but by everybody else's wife. Telephone 783 for supply at once.

City Carriage Co., J. S. Andrade, manager. If you want a hack with good horse and careful driver ring up Telephone 113, corner of Fort and Merchant streets. Hack at all hours.

The Oliver Typewriter is pronounced by experts, the best machine in the world. It has many valuable features, which have to be seen in order to be appreciated. The Oliver can be seen at the office of A. V. Gear, No. 210 King street.

Singers lead the world. Over 13,000,000 made and sold. Highest awards at the World's Columbian Exposition for excellence of construction, regularity of motion, ease of motion, great speed, adjustability, durability, ease of learning and convenience of arrangement. B. Bergersen, agent, 16 1/2 Bethel street.

## SIGNALING FOR 1898.

This, our code, you may read at sight. A story told in black and white. No glass required to aid the view, Fabrics right and colors true.

### COLORS.

All colors come from the sun. We have all colors under the sun.

### CLOTHS.

Madras, Oxford, Botany, Madras. Every weave that is produced by the loom.

### NOTE THIS:

We have done no experimenting at the expense of the Customer. All our Goods are first class, and class first in style and quality.

## 'The Kash,'

9 Hotel Street : : Waverley Block

Agents for Dr. D. Imel's Linen-Mess Underwear. See our Catalogue.

### We Make Shirts to Order.

## Turkeys! Turkeys!

FROM 6 TO 16 POUNDS.

Alive, Dressed or Roasted.

### ALSO

## Chickens, Ducks and Sucking Pigs

### AT THE

## Central Meat Market,

Nuuanu Street.

Leave Your Orders Early.

Telephone 104.

## Art Portraits

Chesney W. Ewing, a leading portrait painter of San Francisco, is now in Honolulu and connected with our studio. His work here is already

## On Exhibition

and admired by all who see it. Water color and Crayon portraiture from life-size to miniatures. A specialty is made of painting on ivory and porcelain. Get your

## Sweetheart's Picture

on your watch dial, or that of any loved one. Photographing by the latest science, with special regard to posing and grouping, still makes ours the

## Best Place.

At the old stand in Fort street.

J. J. WILLIAMS.

## MURRAY'S Carriage Shop

21 and 23 King Street.

## Horse Shoeing

### — AND —

## General Jobbing

Only First-class Work turned out.

T. B. MURRAY.

Telephone 572.

## O. G. TRAPHAGEN, ARCHITECT

223 Merchant St., Honolulu, Between Fort and Alakea,

TELEPHONE : : : 734

ROBERT GRIEVE.

## Book and Job Printer

Merchant Street, Honolulu, H. I.

Over Hawaiian News Company's Book Store. my 18.

## GEAR, LANSING & CO

### STOCK, BOND

### — AND —

## MONEY BROKERS

Stocks and Bonds Bought and Sold on Commission.

## Loans Negotiated

## Real Estate

### — AND —

## Insurance Agents

Rents collected. Complete charge of Property for absentees. Financial Agents in any capacity, as Trustees, Assignees, Administrators or Executors.

Agency of

## Greenwich Fire Ins. CO.

## 210 KING STREET,

HONOLULU, H. I.

## Books and Stationery!

Blank Books, Memorandum Books, Letter Copying Books, Reporter's Note Books, Time Books, Collection Books, Miscellaneous Books by Popular Authors, Picture Books for Children,

## The Book of Books

In Great Variety and FINE STATIONERY

For Business and Social Correspondence.

School Tablet, Composition and Exercise Books, Copy Books, School Supplies, Etc., Etc., Etc.

ALL PRICES JUST RIGHT.

## Golden Rule Bazaar,

316 Fort Street.

## Club Stables, Limited.

FORT STREET,

Telephone 477

### Boarding,

### Sale,

### Livery.

## Breaking Horses

A SPECIALTY.

## Finest Turnouts in City. Wagonettes and Surries

With Careful Drivers always on hand.

### Hacks at All Hours.

### HORSE CLIPPING A SPECIALTY.

TELEPHONE 319.

STAND: Cor. Union and Hotel Sts.

## John Nott,

Importers and Dealers in



## Steel and Iron Ranges,

## STOVES, AGATEWARE

## DIMOND BLOCK.

121 & 123 King Street.

## J. S. Walker,

## Real - Estate - Broker

### AND

## FINANCIAL AGENT.

## Dealer in Real Property, Improved or Unimproved.

Has for Sale and Lease on Liberal Terms.

### SALE.

1. 2 Houses and Lots on Nuuanu streets, between Vineyard and School streets.
2. 1 Large Lot on Nuuanu street, between Vineyard and School streets.
3. Large Lot, Makiki street, fenced, 228 feet frontage.
4. Lot on Kinau street between Alapai and Kapiolani streets 140 feet frontage.
5. Lot on Lunaliio street between Alapai and Hackfeld streets
6. 3 large Lots on Prospect street.
7. The Building known as Thomas' Block, 2 stories and embracing 5 (rented) stores on leased ground.
8. Rice Land at Waikane, Koolau.
9. Lot on corner of Heula and Kesanooku street between residence of W. A. Bowen and lot of W. M. Giffard, having frontage on Heula street 260 feet.
10. Lots 6 and 7 with House, Kalia, Waikiki road.
11. Half Acre Lot in Hilo Town.

### LEASE.

1. 3 Cottages at Old Waikiki.
2. Store and Dwelling, corner Wyllie and Nuuanu, ready for occupancy.
3. Lot corner Merchant and Richards streets.

Properties Managed, Collector of Rents, Loans Negotiated and Advances made on Real Estate.

### JOHN S. WALKER,

Spreckels Block, Honolulu.

P. O. Box. 339. Tel. 331.

## Certificate of the Minister of the Interior in re Bank of Hawaii, Limited.

I, JAMES A. KING, Minister of the Interior of the Republic of Hawaii, do hereby CERTIFY that in accordance with the requirements of Section 12, Chapter XXIII of the Session Laws of 1884, the same being an Act to provide for the Incorporation of Banking Companies, I have examined into the condition of the 'BANK OF HAWAII, LIMITED,' a corporation formed under said Act and located in the City of Honolulu and I am satisfied that said Corporation has fully complied with the provisions required by said Act, to be complied with before commencing the business of Banking, and the said corporation, the 'Bank of Hawaii, Limited,' is hereby authorized to commence business.

IN WITNESS WHEREOF, I have hereunto placed my hand and Official Seal this 23rd day of December, A. D., 1897.

(Signed) J. A. KING, Minister of the Interior.

## Sugar Bags For Sale

100,000 Calcutta Sugar Bags, Size 36x22, Weight 16 Ounces,

Especially adapted for consignments to New York.

These Bags are in stock and ready for immediate delivery.

### J. G. ROTHWELL,

804 Im Warehouse, Queen Street.

### For Sale.

House with two bedrooms, parlor, dining-room, bathroom with patent W. C. and bath tub, pantry, kitchen and stables, on Vineyard street, suitable for business man; 5 minutes walk from town.

For further particulars, apply to 767-1f A. V. GEAR & CO.

### For Sale

Two Houses containing 9 and 7 rooms - situate on Punahou street opposite Punahou College. Prices, \$4000 and \$2500. Terms, \$1000 cash each and balance in mortgage. Apply to A. V. GEAR & CO., 210 King street. 707-1f

### For Rent.

House containing four rooms, with kitchen, pantry and storeroom. Premises on Liliha street opposite Kuanini. Immediate possession given. For terms apply to W. C. Erbe, Kaahumanu street, or C. Creighton, Merchant street. 789-1f



# W. G. Irwin & Co. Limited.

Agents for  
Western Sugar Refinery Co. of San Francisco  
Baldwin Locomotive Works of Philadelphia, Penn., U. S. A.  
Newell Universal Mill Co. (National Cane Shredder), New York, U. S. A.  
N. Ohlandt & Co's Chemical Fertilizers.  
Alex Cross & Sons, high grade fertilizers for Cane and Coffee.  
Reeds Steam Pipe Covering

Also  
**Offer for Sale**  
Paraffine Paint Co's P & B Paints and Papers; Lincol and Linseed oils, raw and boiled.  
Indurine (a cold water paint) in white and colors.  
Filter Press Cloths, Cement, Lime and Bricks.



## LIFE and FIRE INSURANCE AGENTS.

AGENTS FOR ..  
NEW ENGLAND MUTUAL LIFE INSURANCE CO. OF BOSTON.  
AETNA FIRE INSURANCE COMPANY OF HARTFORD.

## Wm. G. Irwin & Co. (LIMITED).

Wm. G. Irwin, - President and Manager  
Claus Spreckels, - - - Vice-President  
W. M. Giffard, - Secretary and Treasurer  
Theo. C. Porter, - - - Auditor

## Sugar Factors AND Commission Agents.

AGENTS OF THE  
OCEANIC STEAMSHIP COMPANY OF SAN FRANCISCO, CAL.

C. BREWER & COMPANY, LIMITED,  
Queen street, Honolulu, H.I.

AGENTS FOR  
Hawaiian Agricultural Company, Oonoes Sugar Company, Honoum Sugar Company, Waialua Sugar Company, Waialae Sugar Company, Makai Sugar Company, Haleakala Ranch Company, Kapapala Ranch, - Planters' Line San Francisco Packets, Chas. Brewer & Co.'s Line of Boston Packets, - Agents Boston Board of Underwriters, Agents Philadelphia Board of Underwriters.

LIST OF OFFICERS:  
P. C. Jones, President; George H. Robertson, Manager; E. F. Bishop, Treasurer and Secretary; Col. W. F. Allen, Auditor; C. M. Cooke, H. Waterhouse, A. W. Carter, Directors.

## W. C. ACHI & CO., Brokers & Dealers

## REAL ESTATE

We will Buy or Sell Real Estate in all parts of the group.  
We will Sell Properties on Reasonable Commissions.

OFFICE, 10 WEST KING STREET

## Building Lots!

At WAIKIKI on car line and on PA LAMA ROAD near fertilizing Plant.

These Lots are Very Cheap and Sold on Easy Terms.

Desirable Acre Tracts near the city and other Properties for sale.  
**BRUCE, WARING & CO.,**  
Dealers in Lots and Lands,  
312 Fort Street, near King  
TELEPHONE 607. P. O. Box 921

## H. HACKFELD & CO., Ltd

## GENERAL COMMISSION AGENTS.

Cor. Fort and Queen Streets, Honolulu.

## M. PHILLIPS & CO.,

Wholesale Importers and Jobbers of

European and American Dry Goods  
Fort and Queen Streets.

## ALLEN & ROBINSON.

Dealers in Lumber and Coal and Building Materials of all kinds.  
Queen Street, Honolulu.

## Just Like Gold Coin.

For more than fifty years has PERRY DAVIS' PAIN KILLER stood the test against all remedies prepared to eradicate pain, and today stands at the head of the list among the medicines that are so essential to keep at hand in the home.

It is not a new fangle remedy nor do the proprietors lay claim to any wonderful revelation of the ingredients that enter into the manufacture of this ever popular remedy.

It is perfectly harmless, you need have no fear of becoming habitually inclined to its use.

For Colic, Cramps, Dysentery, Colds, and all painful affections, a few doses will certainly give relief. You cannot afford to be without a bottle in the house.

Your forefathers used it and found it beneficial.

Why experiment with some remedy that is new and its effect on the system unknown?

It has many rivals but no equal.

The new 35c. size contains over double the quantity of the 25c. size.

## Hollister -:- Drug Company,

Sole Agents for the Islands.

## MERCHANTS' EXCHANGE

KING AND NUUANU STREETS,  
The celebrated ENTERPRISE BEER on Draught and in Bottles.

## GONSALVES & CO.

WHOLESALE GROCERS AND WINE MERCHANTS,

225 Queen street, Honolulu, H. I.

## H. MAY & CO.,

Wholesale and Retail Groceries.

515 & 517 Fort St., Honolulu  
Telephoner 22 P. O. Box 476

## The Washington Feed Co.

## Hay and Feed Stuffs

of all kinds on hand, and new stocks arriving by every vessel. We have just received a supply of . . . . .

## Whole Wheat Flour.

Corner Fort & Queen Sts.

## A GOOD THING 4--U--2--C

Ohia, Algeroba and Pine Firewood Cut and Split (ready for the Stove). Also.

STOVE, STEAM & BLACKSMITH COAL WHITE AND BLACK SAND  
At Lowest Prices, delivered to any part of the City.  
TELEPHONE : : : 414

## HUSTACE & CO.,

31 Queen Street.

## F. H. REDWARD,

Contractor and Builder.

Offices and Stores fitted up and Estimates given on

## ALL KINDS OF WORK.

Office and Shop: No. 619 Fort street, adjoining W. W. Wright's Carriage Shop.

## The Elite Ice Cream Parlors

108 HOTEL STREETS.

Cakes and Candies,  
Fine Ice Cream.

Our Establishment is the Finest Resort in the City. Call and see us. Open till 11 o'clock P. M.

We have received new and large additions to our stock of

## Fine Wines and Liquors

in anticipation of your requirements for the Holidays. Just to hand /

## Pommery Sec Champagne

## Ruinart Champagne

## Invalid Champagne

also a small and select stock of

Still and Sparkling Hock & Moselle, European Fine Ports and Sherris, Etc., Etc., Etc.

## W. C. PEACOCK & CO. LIMITED.

Tel 46. Merchant Street.

## New Plan For 1898

## HOUSE AND LOT FOR \$275

We have prepared several cottage and house plans and specifications to furnish material and labor complete, within any part of these Islands, or to furnish materials cut in size and marked so that owner has only to put the pieces together in their respective places. All finishing material and hardware will be crated or boxed for Island shipment.

We are also prepared to furnish a house with a lot 50x100 feet, in fee simple, for from \$275 up, situated in the most residential part of the city.

Please call at our office for prices and terms on each set of plans.

## Oahu Lumber & Building Co., LIMITED.

Office on King street, in Leleu, Honolulu.

## Beaver - Lunch ROOMS.

H. J. NOLTE, Proprietor

## The Best Lunch in Town

## Tea and Coffee

AT ALL HOURS.

THE FINEST BRANDS OF

## Cigars and Tobacco

ALWAYS ON HAND.

## THE "ARLINGTON"

A FAMILY HOTEL.

T. Krouse, - - - Prop

Per Day . . . . . \$ 2.00  
Special Monthly Rates!

The Best of Attendance, the Best Situation and the Finest Meals in this City.

## HONOLULU Carriage Manufactory

613 to 621 Fort Street.

## Carriage Builder AND REPAIRER.

Blacksmithing in All Its Branches.

W. W. WRIGHT, Proprietor.  
(Successor to G. West.)

Consolidated Soda Water Co., Ltd  
Esplanade,  
Corner Allen & Fort Sts., Honolulu  
HOLLISTER & CO., Agents.  
HAWAIIAN SODA WORKS,  
FACTORY: SUNNY SOUTH.  
Patent Safety Bottles; Screw Stoppers  
Telephone 632.  
FAMILIES SUPPLIED.

## YOUNG DEVIL'S PRANK.

Verifies Old Proverb of "Ministers' Sons and Deacons' Daughters."

The old saw about "ministers' sons and deacons' daughters" being worse than other people's children has a verification in the following story from Bourbon, Indiana, under date of January 17:

Rev. Mr. Akin, pastor of the flock of Bethel church, on Sunday night took for his theme, "His Satanic Majesty." He is an eloquent man and he painted the arch fiend in vivid colors.

At the climax of the description a being dressed to represent the devil, with large head and switch ing tail, ambled up the aisle, blowing smoke from its nostril and bellowing: "I am the devil and I want all of you!"

The audience became panic stricken. Men, women and children were hurled to the floor and trampled upon in the mad rush for the door. In the confusion the stove was upset and the building caught fire.

Before the horrified members regained their senses the fire had made such headway that all attempts to save the church were in vain.

This morning George Akin, son of the pastor, confessed that he in company with other boys, rigged up a devil suit, and, knowing the subject of his father's sermon, concealed himself behind a chair and awaited the arrival of the audience.

## MORE ANNEXATION.

It is Now Proposed to Annex Jamaica to Canada.

Montreal, Quebec, Jan. 15.—W. B. Chapman, a well known capitalist of Jamaica, in an interview today, stated that the party in favor of the annexation of the island to Canada has grown to great strength and that definite measures are on foot to secure the union. It is the intention to unite all the British possessions in the Western Hemisphere into one dominion, and Chapman says definite encouragement has been offered by the British Government.

While this may be to the advantage of the empire, Canadian politicians are protesting vigorously against being harnessed with such incompatible interests. The differences, they say, between provinces now in the confederation are sufficiently rampant to justify opposition. Some years ago a delegation from Jamaica bronched the subject of union to the Canadian Parliament, but the project was overwhelmingly defeated. The present party intends to appeal to the British Government and its sanguine of success. The leaders here claim that if the scheme goes through all the strength will be taken from the confederation and state that Canada will resist it by all possible means.

## Followed Their Advice.

"I broke out with great blotches on my face, and friends told me my blood was out of order and that I ought to take a bottle of Hood's Sarsaparilla. I followed their advice and from that time to this I have not had any eruptions on my face. I know Hood's is a good medicine." Mrs. A. E. Radkey, St. Louis, Michigan.  
Hood's Pills cure nausea, sick headache, indigestion, biliousness. All druggists. 25c.

## Our Perfumed Butter.

An exchange mentions as a matter of news that the English have adopted a new fad in the shape of perfumed butter, but we fail to discover anything new in it. "Perfumed butter" can be found at any grocery store and at most boarding-houses. Some folks do not like the perfume, but that is all a matter of taste, or smell.—Montgomery [Ala.] Advertiser.

Nicely furnished rooms at the Popular House, 154 Fort street, from \$1.00 per week up.

Mechanics' Home, corner Hotel and Nuuanu streets, lodging by day, week or month. Terms: 25 and 50 cents per night. \$1, and \$1.25 per week.

Kroeger Pianos, sweetest in tone, Jas. W. Bergstrom, sole agent, cash or installments. Warerooms at G. West's, Masonic Temple. Office at Thrum's Book Store. Tuning and repairing. Telephone 347.

# CASTLE & COOKE, LTD, IMPORTERS

Hardware and Commission Merchants.

- |  |   |
|--|---|
| Plows and Agricultural Implements;               | Graphite and Graphite Paint;                    |
| Plantation Supplies;                             | "Garland" Stoves and Ranges;                    |
| Lubricating Oils;                                | Blue Flame Oil Stoves;                          |
| Carpenter's, Machinist's and Blacksmith's Tools; | Gasoline Stoves;                                |
| Arms and Ammunition;                             | Agate and Tin Ware;                             |
| Farmer's Boilers;                                | Lamps;  |
| Wiley & Russell's Screw Plates;                  | "Automatic" and "New Victoria" Sewing Machines, |
| Taps and Dies, Drills;                           | Etc., Etc., Etc.                                |
| Paints, Oils, Varnishes;                         |   |

# CASTLE & COOKE, LTD., IMPORTERS

Hardware and Commission Merchants.

# H. HACKFELD & CO. Limited.

—Importers and Dealers in—

## General Merchandise

—AND—

## Plantation Supplies.

# H. HACKFELD & CO., LTD.

201 to 215 Fort Street.

## JUST RECEIVED

## The City Furniture Store

Another lot of those  
**Artistic Reed Chairs, Rockers, Tables, Etc.,**

Just received in time for the Holidays at the CITY FURNITURE STORE, Love Building, 534 and 535 Fort Street.

Call and inspect them before it is too late.  
**H. H. WILLIAMS, Manager.**

OFFICE 846 : : TELEPHONES : : RESIDENCE 849.

# Honolulu Undertaking Co.

**ED. A. WILLIAMS, F. D., : : : Manager.**

The Only Fully Equipped, Complete and EXCLUSIVELY UNDERTAKING Establishment on the Islands. Everything New and of the Latest and Most Improved Styles.

## Embalmng

A Specialty! No Bungling! No Failures!  
NOTE: Mr. ED. WILLIAMS is a Graduate of Clark's School of Perfect Embalming by which process the body retains its natural appearance for years.

Office and Parlors: 514 and 516 Fort St., near Hotel; Telephone 179. Residence and Night Telephone 815.



# Success! Success! Nothing Like Success!

WE CAN TRUTHFULLY SAY THIS OF OUR

## Great Shoe Bargain Sale

And what is more gratifying to the people is its continuance, so that everyone can take advantage of the bargains offered.

One of these days we will have a larger store, finely fitted, and stocked with a larger and more complete line of shoes than were ever offered in Honolulu. New and up to date in every particular. Everything will be of the highest order, except the prices of the shoes, those we will keep, as we have started them—at the lowest.

We can afford to. We buy more shoes than any other concern on the Pacific Coast. We have ten stores.

### WE CAN, WE WILL

Sell shoes at prices which will attract you and will secure your patronage. Pay our store a visit and inspect prices.

### FAIRCHILD'S HONOLULU SHOE HOUSE.

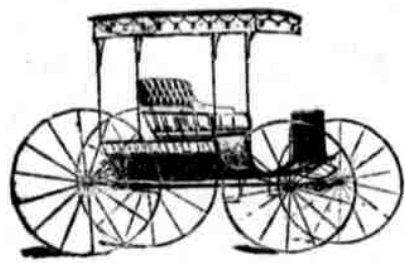
J. MURPHY & J. S. LYNCH, Managers, 426 and 426½ Fort street, Corner of Hotel street.

Surreys, Phaetons,  
Business Buggies,  
Delivery Wagons,  
Road Carts, Etc.



Single and Double Harness,  
Whips, Lap Robes, Rugs,  
Sun Shades, Lamps, Etc., Etc.

These Goods are bought direct from the manufacturers, and are at bed rock prices.



### SCHUMAN'S Carriage & Harness House

Fort Street,  
One Door above Club Stables.

## Here We Are Again YOU KNOW US

You know there is reputation back of everything in the shoe line WE sell. Prices are as low as the lowest for reliable goods. With keen opposition by overloaded stocks, cut prices, and promises of a Gold Dollar's worth for 40c., we are still in the ring and you remember that 10 years, experience in shoes right here enables us to know what to buy, how to buy and where to buy shoes, for spot cash—every bill discounted—all of which makes us able to sell you goods as cheap as anyone and thus no promises.

### The Manufacturers' Shoe Co., Sign of the Big Shoe. Fort Street.

Honolulu, H. I.

### Hawaiian Safe Deposit and Investment Company.

REAL ESTATE: We are prepared to handle realty in any part of the Islands and make a specialty of city property.

STOCKS AND BONDS: We buy or sell for our customers strictly on commission, all first-class stocks or bonds.

FIRE INSURANCE: We solicit all risks at lowest rates for the English and American Underwriters, one of the strongest and best of companies.

AGENCIES: We will undertake to secure subscriptions for stock in legitimate enterprises for developing the agricultural or commercial industries of Hawaii.

TRUSTEES: We offer to act for holders of stocks, bonds or securities of any kind, collecting rents, dividends, coupons or interest, and rendering accounts with care.

GEORGE R. CARTER, Manager.  
In care of Bank of Hawaii, Ltd.

### Hawaiian Fertilizing COMPANY

is prepared to furnish

Nitrate of Soda, Bone Meal, raw or dissolved, Florida and Lady Elliot Island Guano, Sulphate of Ammonia, Muriate and Sulphate of Potash and Kainite, Coral Lime Stone and Manures. In quantities to suit.

A. F. COOKE, Manager.

### LATEST STYLES JEWELRY

By last steamer from the Coast.

### THE REGULAR THING

At my store, where the

### BEST CUSTOM WORK

Is done—repairing and new work both. Pins, rings, bracelets, watch-making, etc.

H. G. BIART, - 404½ Fort St.

### Real Merit

Is the characteristic of Hood's Sarsaparilla, and it is manifested every day in the remarkable cures this medicine accomplishes. Druggists say: When we sell a bottle of Hood's Sarsaparilla to a new customer we are sure to see him back in a few weeks after more—proving that the good results from a trial bottle warrant continuing its use. This positive merit

### Hood's Sarsaparilla

possesses by virtue of the Peculiar Combination, Proportion and Process used in its preparation, and by which all the remedial value of the ingredients used is retained. Hood's Sarsaparilla is thus Peculiar to itself and absolutely unequalled in its powers as a blood purifier, and as a tonic for building up the weak and weary, and giving strength to the nerves. Be sure to get

### Hood's Sarsaparilla

Sold by all druggists. \$1; six for 5. Prepared only by C. I. Hood & Co., Apothecaries, Lowell, Mass.

Hood's Pills are the only pills to take with Hood's Sarsaparilla.

### SHIPPING INTELLIGENCE.

Diamond Head Signal Station, Feb 4, 1 p.m.—Weather clear, wind light N. E.

#### TIDES.

DAY.	High Tide Jan. Feb.	High Tide Large.	High Tide Small.	Low Tide Large.	Low Tide Small.
Monday.....	31	a.m. 11.10	a.m. 4.4	p.m. 8.51	
Tuesday.....	1	0.40	0.40	5.14	9.00
Wednesday...	2	1.21	1.50	6.15	9.14
Thursday.....	3	1.57	2.34	7.7	9.30
Friday.....	4	2.28	3.4	7.57	9.49
Saturday.....	5	3.00	3.37	10.5	8.43
Sunday.....	6	3.30	4.12	10.26	9.28

The Standard time whistle sounds at 12h. 0m. 0s. (midnight), Greenwich time, which is 1h. 30m. p. m. of Hawaiian Standard time.

#### MOVEMENTS OF STEAMERS.

Steamers due and to sail tomorrow and for the next six days are as follows:

STEAMERS.	FROM.	DEP.
Mokoli-Molokai	.....	Feb 5
Claudine-Maui	.....	Feb 6
W G Hall-Kauai	.....	Feb 6
Gaelic-Yokohama	.....	Feb 6
Alameda-San Francisco	.....	Feb 10
Kinau-Hilo	.....	Feb 11

#### DEPART.

STEAMERS.	FOR	SALES.
Australia-San Francisco	.....	Feb 5
Gaelic-San Francisco	.....	Feb 6
Mokoli-Molokai	.....	Feb 7
Claudine-Maui	.....	Feb 8
W G Hall-Kauai	.....	Feb 8
Alameda-Colonies	.....	Feb 10

#### ARRIVED AT HONOLULU.

Stmr James Makee, Tullett, 12 hrs from Kapaa.  
Stmr Mikahala, Thompson, 12 hrs from Kilauea.  
Stmr Keauhou, Thompson, 19 hrs from Honokaa.  
Stmr Kaula, Bruhn, 14 hrs from Makaweli.

#### SAILED FROM HONOLULU.

Schr Kauikaouli for Hawaii.  
Stmr James Makee, Tullett, for Kapaa.  
Stmr Mikahala, Thompson, for Hanalei.  
Stmr Kinau, Clarke, for Hilo.

#### Piano for Pauahi Hall.

A magnificent Krueger cabinet grand upright piano arrived by the Australia for Pauahi hall, Oahu College. James W Bergstrom imported it. The instrument is in an oak case of the same color as the finishing of the room. It will be used in school exercises, for which purpose the great pipe organ would not serve.

#### Humburg's New House.

John Outerkick is putting up the frame of J. F. Humburg's fine new house at Punahou. The building will be two stories high and very roomy. Carpenter work will cost \$4800. John Emmeluth will do the plumbing.

#### Captain Houdlette.

The popular master of the Australia on his last up trip completed his one hundred and fiftieth round trip between this port and San Francisco. He has traveled 630,000 miles during that time.

Frames made at short notice for all kinds of pictures or diplomas. King Bros., 110 Hotel street.

### WHERE TO GO THIS EVENING.

Meeting I. O. Red men, 7:30.  
Meeting Lunalilo Court, A. O. of F., 7:30.  
Annual meeting Company D, N. G. H., 7:30.  
Drill Company C, N. G. H., 7:30.  
Meeting Scottish Thistle Club, 7:30.  
Prayer services in St. Andrews cathedral and Palama chapel, 7:30.  
Match game basket ball in Y. M. C. A., 7:30.  
Grand benefit circus entertainment, 8.  
Meeting Pacific Lodge, Masons, 7:30.

### ITEMS FROM HARBOR FRONT

Four Big Sugar Cargoes Arrive from Island Ports Today.

Hilo Limer Kinau Leaves—Quick Work by the Mikahala—Australia's Outward Cargo—Weather Alongshore.

Rain at Hamakua. Northerly swell at Kilauea. The barkentine S N Castle is in the stream.

The Tillie E Starbuck is at Emmes wharf.

The bark Gwynedd has finished discharging.

Fine weather on Kauai coast and no rain.

The steamer W G Hall will be in tomorrow from Kauai.

Nineteen sailing vessels, one steamer and three men o' war in port.

The bark Cydon is at Brewer's wharf discharging general merchandise.

The steamer J A Cummins with Koolau rice for the Australia will be in this evening.

Some quick work was done today in discharging the steamer Mikahala's cargo into Ocean c dock. Five thousand bags were unloaded in about three hours.

A big sand spit has been formed at the Kapaa entrance on Kauai by the action of the heavy seas during the past month. It is now difficult to load there during rough weather.

The Australia will have her usual cargo of sugar for San Francisco tomorrow. About 12,000 bags sugar, 5000 bunches bananas and 4000 bags of rice will be shipped.

The steamer James Makee brought the following report of sugar left on Kauai: Lihue 7000 bags, Hanalei 9200 bags, Koloa 3000 bags, Kekaha 3500 bags, Makaweli 4000 bags, Kealia 12,000 bags, and Kilauea 4500 bags.

#### Notes from Hamakua.

The steamer Keauhou arrived this morning with a full cargo of sugar from Honokaa. Purser Radway reports having arrived at Punahou Jan 20. Experienced heavy weather and put mail ashore that day. Discharged machinery and freight at that landing until February 1. Could only work part of the time on account of rough weather. Light south west winds and smooth seas on the Hawaii coast and light northeast winds from Labaia to port. The following sugar is at Kau and Hamakua. Honouapo 3200 bags, Kakuiahae 3500 bags and Honokaa 6500 bags.

#### PASSENGERS DEPART.

For Hilo and wayports, per stmr Kinau—Volcano: Miss S Mathiesen, Miss M Mathiesen, J M Sorzano, Geo L Tulade, C Osborne, E A Mathiesen. Way ports: Miss Ahu, C E Vroman, Geo G Green, Geo Angus, G F Womrath, E Bookemann, Dr P Rice, C Hedemann, R Catton, J M Kanekua, Akina, Miss Maguire, Miss Clark, J Willagure, C V E Dove, W Scott and wife, L A C Parish, Mr Peachy, A Michalitschke, J A Rodriguez, Wm Haas, Col Little, Miss Little, W D Braden, Jno Rasmussen, C Kaiser, A Lidgate, Jos Marsden, Prof Koebele, S M Morrison, F Goveia, M S Levy, J H Boyd and son, G J Campbell, H M Coke and 56 deck.

#### PASSENGERS ARRIVED.

From Kapaa, per stmr James Makee—G Fairchild, J Olds Jr.

From Honokaa, per stmr Keauhou—Mr Newcomb.

From Makaweli, per stmr Kausi—H J Gallagher, Mr Willie, wife and child, Hoopii Lili J A Akioa, Mrs A Dreier and family.

#### RECEIPTS ISLAND PRODUCE.

Per James Makee—2710 ex sugar C Brewer & Co.

Per Mikahala—5000 ex sugar W G Irwin & Co.

Per Keauhou—4544 ex sugar F A Schaefer & Co, 20 bbls hides.

Per Kauai—3420 ex sugar F A Schaefer & Co, 500 ex sugar H Waterhouse, 3750 ex sugar W G Irwin & Co.

### WAS A CONUNDRUM SOCIAL

How They Asked for a Stone and Received Bread.

Many Complications Over the Puzzle Menu Card—Round of Pleasure—The Literary Program.

The large parlor and dining hall of the Pearson home on Miller street were thrown together last evening for the conundrum social of the Ladies Aid Society. Both rooms and the veranda were filled by a merry party for three hours. The following program was begun shortly after 7:30:

1. Gospel Hymn No. 212.
2. Vocal Solo—Mrs. McAllister.
3. Recitation—Miss Ferguson.
4. Three Little Helpers—Misses Anderson, Lampsou and McAllister.
5. Piano Solo—Mrs. Nicholson.
6. Quaker Duet—Miss Lyle and Ma-ter Nichols.
7. A Few R marks—Rev. G. L. Pearson.
8. Refreshments.

The literary program was very much enjoyed. Miss Ferguson's recitation was one of the leading features of it. The recitations by the little Misses Anderson, Lampsou and McAllister were also an interesting number. Rev. G. L. Pearson spoke for a few minutes on the objects of the gathering and church work in general.

The refreshment part of the program proved a feature. All sorts of complications arose over it, and some of the results were quite amusing. Aside from coffee, tea and grapes none of the articles named by the menu card could be positively located. Altogether the affair was most successful and reflected great credit upon the ladies originating and promoting it.

#### NOW THEY WILL DANCE.

Company A Arranges for Grand Ball on Evening of 23rd.

At the meeting of Company A, N G H, held yesterday evening final arrangements were made for the grand ball, which will come off in the drill shed on the evening of February 22, Washington's birthday.

On the occasion of the dance the decorations will differ from and be prettier than any seen here before. Two immense arc lights will be put in the shed especially for the function. The National Quartette Club will furnish music.

The following committees will have charge of the affair:

Arrangement—Captain Paul Smith, Lieutenant W Fetter and Lieutenant H Klemme.  
Floor—Lieutenant Fetter, Sergeant Peterson and Sergeant O Fetter.

Reception—Non com officers of the company.

Tickets for the dance may be obtained at the Elite Ice Cream parlors, or from members of the company.

#### Research Club Meeting.

The next regular meeting of the Young Men's Research Club will take place a week from tonight. Frank Atherton, R. D. Silliman and James S. Lynch will present papers on the subject of "Cooperative Club Houses." Rev. D. P. Birnie will describe "Tammany Methods."

Pearson & Hobron, 312 Fort street, have an expert gunsmith to attend to that branch of the repair department.

## Olaa Coffee Lands

### For Sale.

- NO. 1. Sold.
- NO. 2. Sold.
- NO. 3.
- NO. 4. A fine Coffee Ranch of 118 acres (leasehold, 28 acres cleared and under cultivation planted with 1 year old coffee trees.
- NO. 5. Excellent bargain in a Coffee Plantation of 100 acres. Fee simple, 70 acres planted in coffee trees from 2 to 3 year old. Fine dwelling house and outbuildings.
- NO. 6. A 60 acre Coffee Ranch in fee simple, facing on the Volcano Road. 15 acres in coffee. 9 months advanced.
- NO. 7. A 30 acre Coffee Farm, lease hold, properly 4 acres are planted with 4 year old coffee trees and 18 acres with 2 year old trees. The owner will clear and plant 2 acres additional free of charge for the purchaser.
- NO. 8. 286 acres of unimproved coffee land just back of the Volcano Road. 30 foot road leading to the land.
- NO. 9. Mountain View Hotel and Plantation. 52 acres in all. 3½ acres planted with coffee trees 4 months old, 3½ acres of 2 to 4 year old coffee. The half way house for the Volcano.

Apply to

A. V. GEAR & CO.,

210 King Street, Honolulu.

Bargains in Real Estate

Fine BUILDING LOTS At

Sea View, Punahou, Prospect Street, Kalihi

..... AND .....

King St, near Waikiki Road

TWO ACRES

of important property in central part of city limits.

Desirable residence property, nice cottages and well improved grounds, King street, Young street, Punahou and South Slope of Punchbowl.

Gear, Lansing & Co.

210 King Street.

Tommy K. Nathaniel,

OFFICE: Kalawao, Molokai, H. I.

Abstract and Business Office Agency.

Having been entrusted from business men all over the Islands for the past years, I am prepared to make Abstracts of Titles or Deeds in a most thorough, accurate and complete manner, and to negotiate sales or leases of lands belonging to those who are residing at the Settlement on short notice.

693-3m

Evening Bulletin 75c per month.