

Necessity is the mother of invention, but advertising is the

# EVENING BULLETIN

3:30 O'CLOCK

Nurse Girl

EDITION

Count 100 before you speak if you are angry—if the other fellow is the biggest, count 10,000. But do not hesitate at any time to be helped by a — BULLETIN AD. —

### STEAMER TABLE

From San Francisco:	
Alameda	Sept. 2
Siberia	Sept. 6
For San Francisco:	
Korea	Sept. 3
Alameda	Sept. 7
From Vancouver:	
Mowera	Aug. 27
For Vancouver:	
Aorangi	Sept. 21

Vol. XVI. No. 2856

HONOLULU, TERRITORY OF HAWAII, TUESDAY, AUGUST 30, 1904

PRICE 5 CENTS

## ALPINE CLIMBERS ON HALEAKALA

### Waialuku Club Members View The Glories Of Crater.

### TRIP MADE IN GOOD TIME WAS COMFORTABLE

### MAGNIFICENT VIEW AT SUNRISE. SIDE TRIPS TO INTERIOR OF WORLD'S GREATEST CRATER.

[Special to The Bulletin.]

Waialuku, Maui Aug. 29.—Four members of the Alpine Club of Waialuku—Dr. E. Armitage, F. H. Jordan, H. M. Coke and J. N. K. Keola—made an ascent of Haleakala crater last Saturday, August 27. They left Waialuku at 7:30 a. m. in a surrey with provisions enough to last them three or four days.

At Hon. S. E. Kalam's Makawao residence the party left the surrey and were provided with fresh horses and mules for the excursion. One pack mule was well laden with provisions for the alpine climbers. The party started from Kalam's at 4 p. m. and the cave below the summit was reached at about 9 p. m. This cave is known as Flea Cave or Little Cave, but it was rechristened Alpine Cave. The animals were tied with ropes to sled bushes near by. A big bon fire was soon built with firewood brought from the slopes of the crater several miles below. This fire was distinctly seen by people in Waialuku and vicinity and served as signal of safe arrival.

Winner was prepared and all sat down to eat their meals like veteran mountaineers. About 10 o'clock the party walked up to the summit of the crater, and although the distance was less than a mile it occupied them an hour, the light mountain air rendering it impossible to make rapid progress. Some were attacked by a while with mountain sickness, but the physician of the party was powerless to render any medical aid because he had left his medicine chest in Waialuku. However, the affected member soon rallied and became just as active as the rest.

(Continued on Page 4.)

## KINAU TIME CHANGED

The Kinau's schedule has been slightly altered. She will now leave Hilo Friday at 1 p. m. This will make her arrive at Honolulu about three hours later than usual, or at about 1 p. m. next Saturday.

### MISSOURI'S DEADLOCK

St. Joseph, Mo., Aug. 18.—At the conclusion of the 78th ballot for Congress man, without change, the Fourth district Democratic convention, which has been in deadlock since July 26, took a recess. Cochran, Wilson and Hooper are still the only names before the convention.

## CORRECT CLOTHES for MEN

LET your choice of clothes be guided: 1. By the stylish effect. 2. By the fit. 3. By the pattern and quality of the fabric. 4. By the general workmanship. This label



is on clothes that comply with these requirements yet cost you little more than ordinary ready-made, which will never meet them.

Equal to fine custom-made in all but price. The makers' guarantee, and ours, with every garment. We are Exclusive Distributors in this city.

### THE KASH CO., Limited

## McMahon Resigns AS COURT SCRIBE To Go To Mexico

Stenographer P. Maurice McMahon of Judge Geo. D. Gear's Circuit Court, better known among his friends and tourists as "The Poet of Passion," has handed his resignation to His Honor and is packing his dress suit case and telescope basket for Mexico, where he will engage, under the auspices of that government in the work of advertising the country, possibly getting out a book of poems on the charms of the land of the cactus and pyramidal straw head gear.

Since the present economical administration cut down the salaries of Hawaiian government employes, McMahon has been turning his mind to pastures new and has now decided to up-stakes and away, stopping long enough at Panama to buy a good hat at a reasonable price.

Auditor Fisher has a test case against McMahon in the courts, alleging that inasmuch as he is being paid as a stenographer for transcripts of evidence, over and above his salary, he is drawing two salaries, contrary to the statute. This test case can be transferred easily to some other stenographer.

McMahon's numerous friends will be sorry to see him depart hence, but they are not foolish enough to believe that he will stay away. His heart is in Hawaii—poetically speaking, of course. McMahon made a pilgrimage to Samoa once on a time, returning with new inspirations and some choice tapas, trophies of the chase.

## SECRETARY STOPS A ROAD STRIKE

Secretary of the Territory A. L. C. Atkinson has played successfully the part of a peace maker. He has settled a strike, quelled an incipient riot and let loose the dove of harmony where before the harsh grating caw of the crow of discord made thing unmelodious.

There comes from the City of Hilo, Hawaii, this forenoon, a without-wires message directed to the Governor and signed by the Christian name of the Territorial Secretary, who announces that, whereas there was a strike of the Hawaiian toilers on the Okala road, for which Whitehouse has the contract, there is now no longer any difficulty. The Secretary has settled it all; and this without a shot-gun, without any flourish of trumpets or undue display of signed, sealed and proclaimed authority; simply by word of mouth, by conciliatory gesture, by heart to heart conversation and man to man argument did the genial Secretary restore pleasant relations between the laborers and the contracting parties.

(Continued on Page 4.)

The schooner Marconi, which arrived from Newcastle yesterday with a cargo of coal, started for Kahului this afternoon at about 2:30 o'clock. She will be towed to her destination by the tug Fearless.

## REPUBLICANS OFF FOR HILO TOWN

### The Kinau Takes All of Oahu's Politicians.

### DISTRICT CAUCUSES SIMPLIFY THE WORK

### PROGRAM OF THE REPUBLICAN TERRITORIAL CONVENTION. NAMES OF OAHU DELEGATES TO IT.

The Kinau wharf was the center of the city today. Beckley's flagship carrying away to Hilo a tremendous crush of passengers. The majority of the big list were delegates to the Republican Convention at Hilo, which meets Thursday morning at 9 o'clock. Mingled with the potentates of Hawaii's politicians on the Kinau deck were a number of tourists and Island people returning from their visit here to see the polo games.

The band was at the wharf inspiring departing politicians with the rendition of patriotic airs.

Up to late this forenoon there were knots that had to be caucused into smooth places and it was a busy political bazaar that scouted up the gang plank at the last minute.

Chairman Crabbe and the secretary of the Central Committee were as busy as Admiral Beckley himself in getting the crowd away. National Committeeman A. G. M. Robertson, Prince Kuhio and leading workers from both the Fourth and Fifth Districts were with the crowd.

The caucuses of the district delegations held during the past few days have so simplified the work to be done at Hilo that the convention program will likely be carried out with a swing and a rush.

The Kauai delegates go prepared on all the important questions and know how they will vote. The delegation is headed by W. H. Rice, who has a pocketful of proxies.

The principal work of the Convention will be the nomination of Delegate to Congress, the adoption of a platform and the choosing of new Central and Executive Committees.

The people of Hilo have arranged all the details for holding the convention and for the entertainment of the delegates.

Delegates who left in the Kinau were:

- Of the forty delegates from the Fourth District, sixteen departed, the rest being represented by proxies. Those who went were as follows:
- First Precinct—None.
- Second Precinct—J. A. Gilman, W. T. Rawlins and H. E. Murray.
- Third Precinct—B. A. Lloyd.
- Fourth Precinct—Clarence Crabbe, E. K. Quinn, A. G. M. Robertson, S. M. Kamakau and T. Melim.
- Fifth Precinct—C. Yarrick.
- Sixth Precinct—Sam Johnson.
- Seventh Precinct—None.
- Eighth Precinct—C. L. Beal, W. F. Heilbron, H. C. Pfleger, F. E. Thompson with J. Lucas, proxy; J. C. Quinn.

Among the twenty-four delegates from the Fifth District who left for the convention in person were the following: J. A. Kalakiela, Fred. Waterhouse, Archie Mahaulu (with W. W. Goodale's proxy), D. Douglas, Fred. Meyer, H. C. Vida, R. C. Lane, J. C. Lane, N. Fernandez, T. McCants Stewart, Chas. H. Clark, W. H. Crawford, Eli P. Crawford, Solomon Mahelona and Geo. L. Desha.

## MEMORIAL SERVICE

The memorial service in memory of the late Mrs. Alice Mackintosh will be held tomorrow afternoon in St. Andrew's Cathedral at 4 o'clock. It is hoped that all those of whatever sect or creed who knew Mrs. Mackintosh and her life of untiring devotion to the poor and needy, the sorrowful and suffering of these islands, will take this opportunity of paying a last tribute of respect and affection to her memory. The service will consist of an adaptation of the church burial service and an address from the Bishop.

## LADIES' FACIAL MASSAGE

By telephoning Main 227 (SILENT BARBER SHOP) ladies desiring facial massage can secure the services of an expert operator at their homes.

## Will Do Double COURT Work For More Pay

Difficulties threatening the September term of Circuit Court in the matter of providing interpreters, since economy has cut out the regular salaries of interpreters with one exception, may be solved, it is said, by combining in one man two positions and paying the one man accordingly; for example, raise the salary of the bailiff of one of the courts, a trifle and require of him Hawaiian interpretations; raise the wages of a Supreme Court clerk a wee bit and make him also Portuguese interpreter, carrying out the idea as far as the linguistic capabilities of the present force of judiciary employes will permit.

The clerical force in the courts does not feel that, at present salaries, it should be called upon to do double duty when men who did nothing but interpret were a little while ago paid \$150 per month; a clerk in the general judiciary office at \$100 or \$125 per month is not ambitious to interpret in addition to present duties for a sum less than interpreters have been in the habit of receiving for nothing but interpreting.

"Governor Carter, when he took office, asked Washington for an increase of salary because of high cost of living in Hawaii," said one clerk today, "but we Government employes of less exalted rank must have our salaries cut and be expected to do double work. Living is proportionately high for us as it is for the Governor."

As noted elsewhere, P. Maurice McMahon has resigned as Judge Gear's stenographer on account of the reduction in salary.

## DISTRICT MAGISTRATES APPOINTED BY CARTER

Governor Carter has yet to appoint District Magistrates for the Districts of Waimea, Kauai, and Kea and Kaa, Hawaii. Appointments as made to date are as follows:

- R. H. Atkins, North Kohala, Hawaii.
- G. W. A. Hapai, South Hilo, Hawaii.
- William Kanau, Puna, Hawaii.
- Charles Copp, Makawao, Maui.
- C. R. Lindsay, Lahaina, Maui.
- J. K. Pimmanu, Kipahulu, Maui.
- S. Kahoolahalala, Lanai.
- E. R. Ikuo, Koolauoko, Oahu.
- Samuel Hookano, Ewa, Oahu.
- S. Kekahuna, Waianae, Oahu.
- H. K. Kahole, Lihue, Kauai.
- S. H. Ricard, North Hilo, Hawaii.
- Henry Hall, Hanalei, Hawaii.

Mr. Stubbs—Look here, Maria, why is our daughter's head so full of nonsense these days? Mrs. Stubbs—Why, John, she's been putting her curls up in comic papers.—Philadelphia Record

"He's going to take the stump for one of the candidates." "The stump, eh? Then I'll bet the other candidate gets the balance of the tree."—Cleveland Plain Dealer.

The drunk is usually sized up by the liquid measure.

## S. S. ALAMEDA, Sept. 7

Will carry away a shipment of choice pineapples at the same low rates as heretofore. Prices will soon begin to jump.

Leave orders with F. C. Enos, agent, Wells Fargo & Co.

### Married Women

Who have separate property can be relieved of all responsibility in the management of such property and of the transaction of any business in relation thereto.

HAWAIIAN TRUST CO. Limited, FORT ST.

## HEADS TOGETHER ON LAHAINALUNA

### Status of Territory In Relation To The Institution.

### WILL AGRICULTURE SCHOOL OPPOSE ORIGINAL PLAN?

### PAPERS OF ANCIENT TRANSFER DESTROYED AND GOVERNMENT TITLE DIM—A CONFERENCE.

An important conference was held in the executive chamber this forenoon, the somewhat complicated status of the Lahainaluna school being the subject of a consultation in which Governor Carter, Attorney General Lorrie Andrews, Superintendent of Public Instruction A. T. Atkinson and Land Commissioner Pratt took part.

It is the desire of the administration to arrive at a definite understanding of the Territory's position in connection with the Government interests in this educational institution, its lands, water rights and general privileges. The matter is not a simple one as an observance of the following facts will indicate.

This educational establishment, passing from the hands of the American Board of Missions to the Hawaiian Board of Missions and to the Hawaiian Government many years ago, brought to the government its lands under certain stipulations. The institution was to be maintained as a place of public instruction, should be non-sectarian in a sense, but nothing was to be taught there contrary to a certain creed laid down by the Mission people, who entrusted the Government with its welfare. Nothing was to be taught in opposition to certain beliefs or articles of belief; the creed apparently being that of the Free-churchian church. This is one item in the list of fact calling for consideration.

(Continued on Page 4.)

## PHILIP'S DIVORGE SUIT

Mabel Philip today filed a libel for divorce against Joe Philip. Libellant shows that marriage took place March 9, 1896, at Kohala, Hawaii. She alleges as follows:

"That libellant has always conducted herself towards the libellee as a faithful wife should and in accordance to her marital vows.

"That there are three children living, the issue of said marriage.

"That libellant and libellee are now living separate and apart.

"That although of sufficient ability so to do, libellee for two years last past has neglected and refused and still neglects and refuses to provide suitable maintenance and support for libellant and her three children; that libellant and said children have been and are forced to subsist upon the bounty of friends and relatives.

"Libellant asks for an absolute divorce, custody of the children, temporary alimony, and permanent alimony."

## CLOSING OUT AT ABSOLUTE COST

I have determined to sell out my entire stock at absolute cost and retire from business.

If you wear collars, cuffs, neckwear, shirts, underclothing, hats or anything represented in my large stock, this is your chance.

The selling out will be done quickly and it will be done absolutely.

Island orders given prompt attention

I. Levingston, Alexander Young Building.

# BATTLE IS RAGING AT LIAOYANG

[Associated Press Special Cable.]

LIAOYANG, Manchuria, August 30.—The heaviest possible decisive battle of the war is now raging here with General Kuropatkin on the defensive against Generals Kuroki, Nodzu and Oku.

The fighting is of the most desperate character with continuous combat with artillery, rifle and bayonet. The Russian forces are fighting with the desperation of a last stand. The Russian cavalry is proving very effective against the enemy.

It is expected that the battle will continue for several days. The forces engaged aggregate 400,000 men.

## Boxer Activity Is Again Threatened

SHANGHAI, China, August 30.—The Boxers are active in Pechili. The missionaries are fleeing for their lives.

## Hammering Enemy At Port Arthur

CHEFOO, China, August 30.—The assault on Port Arthur continues.

## Sultan Murad Dead

CONSTANTINOPLE, Turkey, August 30.—Former Sultan Murad is dead.

SAN FRANCISCO, Cal., August 29.—SUGAR: 88 analysis Beets, 10s 7 1/2d. Previous quotation, 10s 6 3/4d.

## Crematory Stack Breaks Foundation

Now Holloway has a few tons of pig iron on the impotent foundations, just to see how far the business will sink. There are supposed to be large piles driven down to coral, beneath the structure, but it is believed that this pile-work has not been properly performed.

Two thousand dollars, or thereabout, have been wasted in the preliminary construction of the Government garbage crematory and Superintendent of Public Works C. S. Holloway is casting an eye over his records for him upon whom the responsibility rests.

It has just been discovered that the foundations for the smokestack are not what they should be. The stack was erected and, behold! the concrete foundations cracked and gave and the stack has to come down and the base work must be done all over again at an expense of between \$1,500 and \$2,000.

Superintendent Holloway modestly disclaims any knowledge of the discovery, but the rumor seems persistent.

### GOOD ROCK FOUND

It was recently announced by the Public Works that the Makiki quarry would be abandoned for the reason that the stone had given out. Now it is reported that the workers there have hit it rich in the way of stumbling on a heretofore unobserved vein of good road material which promises to keep the crushers jumping for months to come.

Superintendent Holloway modestly disclaims any knowledge of the discovery, but the rumor seems persistent.

Heywood Shoe Co. Summary, No. 216, \$4.50.

### Newest Style Heywood Shoe No. 216

Fresh new model just received from the factory. It is the latest correct style for Fall and Winter wear and offers an absolutely perfect fitting shoe for every size of foot.

Made in three different leathers to suit, viz.: Vici kid, velours and calf skin.

Price \$4 50.

Manufacturers' Shoe Co., Ltd., Fort St.

MASONIC TEMPLE

WEEKLY CALENDAR. MONDAY Le Progres—Regular. TUESDAY WEDNESDAY Perfection—4th and 5th Degree. THURSDAY Rose Croix—Regular. FRIDAY Le Progres—Third Degree. SATURDAY Aloha Temple—Regular—12 m. All visiting members of the order are cordially invited to attend meetings of local lodges.

HARMONY LODGE, No. 3, I. O. O. F.

Meets every Monday evening at 7:30 in I. O. O. F. Hall, Fort street. F. M. MURPHY, N. G., E. R. HENDRY, Secretary. All visiting brothers very cordially invited.

MYSTIC LODGE, No. 2, K. of P.

Meets every Tuesday evening at 7:30 o'clock in K. of P. Hall, King street. Visiting brothers cordially invited to attend. JOHN WALKER, C. C., F. WALKER, K. R. S.

OHAI LODGE, No. 1, K. of P.

Meets every Friday evening at K. P. Hall, King street, at 7:30. Members of Mystic Lodge, No. 2, Wm. McKinley Lodge, No. 8, and visiting brothers cordially invited. Work, First Rank. C. M. WHITE, C. C., B. M. COLEMAN, K. R. S.

HONOLULU LODGE 616, B. P. O. E.

Honolulu Lodge No. 616, B. P. O. E., will meet in their new hall, on Miller and Beretania streets, every Friday evening. By order of the E. R. HARRY H. SIMPSON, Secretary. F. H. FISHER, E. R.

Wm. M'KINLEY LODGE No. 8, K. of P.

Meets every Saturday evening at 7:30 o'clock in K. of P. Hall, King street. Visiting brothers cordially invited to attend. Work in First Rank. H. T. MOORE, C. C., M. M. JOHNSON, K. R. S.

HONOLULU HARBOR, No. 64, A. A. of M. & P.

Meets on first and third Sunday evenings of each month at 7 o'clock at K. of P. Hall. All sojourning brethren are cordially invited to attend. By order Worthy Captain: FRANK MOSHER, C. C.

FIRE INSURANCE

The B. F. DILLINGHAM CO., Ltd. General Agent for Hawaii

Phoenix Assurance Company of London. Phoenix Assurance Co. of London. New York Underwriters' Agency. Providence Washington Insurance Co. Phoenix Insurance Co. of Brooklyn.

ALBERT RAAS

MANAGER INSURANCE DEPT'NT. Office 4th floor, Stangenwald Bldg.

ICE

Manufactured from pure distilled water. Delivered to any part of city by courteous drivers.

Oahu Ice and Electric Co., Honolulu Telephone Blue 2151

COTTON BROS. & CO.

ENGINEERS AND GENERAL CONTRACTORS. Plans and estimates furnished for all classes. Contracting work. Tel. Main 266. 2200 300, BOSTON BLK., Honolulu.

P. H. Burnette,

Attorney-at-Law and Notary Public. Agent to Grant Marriage Licenses. Real Estate, Insurance, Collections. Office, 79 Merchant Street, Honolulu.

Restaurant.

HONOLULU HINODE CO. 16 N. HOTEL ST. Recently renovated: New Management. New Service. TEALS 25c. ALL NIGHT

Evening Bulletin, 75 cents a month.

WE Develop AND Print Films and Plates WITH GREAT CARE.

Mail Orders Given Special Attention. KODAKS REPAIRED. THE Hollister Drug Co., LIMITED. 1056 Fort Street.

GENUINE APPLE CIDER

The most delicious, the most healthful drink. 75c a Gallon. LIQUOR DEPARTMENT. Hoffschlaeger Co., Limited, 25 King Street, near Bethel

Wm. G. Irwin & Co., Ltd.

WM. G. IRWIN, President and Mgr. JNO. D. SPRECKELS, 1st Vice Pres. W. M. GIFFARD, 2d Vice Pres. H. M. WHITNEY, Jr., Treasurer. RICHARD IVERS, Secretary. A. C. LOVEKIN, Auditor

SUGAR FACTORS AND COMMISSION AGENTS

Agents for the SCOTTISH UNION & NATIONAL INSURANCE COMPANY OF EDINBURGH. WILHELM OF HANDELBURG GENERAL INSURANCE COMPANY. ASSOCIATED INSURANCE COMPANY of Munich and Berlin. ALLIANCE MARINE & GENERAL ASSURANCE CO. Ltd., of London. ROYAL INSURANCE COMPANY OF LIVERPOOL. ALLIANCE ASSURANCE CO. OF LONDON. ROCHESTER GERMAN INSURANCE COMPANY OF NEW YORK.

AGENTS OF THE Oceanic Steamship Company

OF SAN FRANCISCO, CAL. A. Fernandez & Son, Importers and Dealers in HARDWARE, CUTLERY, STOVES, PAINTS, OILS, BRUSHES, and GENERAL MERCHANDISE

Nos. 44-50 KING STREET, Katsy Block, bet. Nuuanu and Smith Sts. TEL. MAIN 189.

DAVID DAYTON

187 MERCHANT STREET.

Lots for Sale

in KAPIOLANI PARK ADDITION-KALIMI, and other desirable localities. Also 1 JUMP-SEAT BUCKBOARD, second-hand; good as new.

BUILDING MATERIALS

OF ALL KINDS. Dealers in Lumber and Coal ALLEN & ROBINSON, Queen St., Honolulu.

NO LADY ASSISTANT.

NEW YORK DENTAL PARLORS 1057 FORT STREET

LOCAL AND GENERAL

Send to or immediately notify the Board of Health of all rats found dead from unknown causes.

Read "Wants" on page 6. H. B. Gehr goes to Hilo today. E. D. Baldwin returns to Hilo today. Wizard golf balls, 50 cts., Wall-Nichols.

G. B. Robertson arrived from Hawaii today. C. V. Sturtevant goes to Maui on a business trip today. C. D. Lufkin returns to Walluku in the Claudine today.

J. D. Paris returned from a business trip to Hawaii today. E. R. Hendry leaves for Maui this evening in the Claudine. Paul Jones, Rye or Bourbon, at the Pantheon—same old stand.

Rev. O. P. Emerson and wife returned from Hawaii today. The best cup of Hawaiian coffee in the city. N. England Bakery. Have your old Panama hat made like new. Globe Clothing House.

F. C. Atherton and wife leave for Maui this evening in the Claudine. New school supplies and text books just received, more coming. Arleigh & Co.

Have your painting done by Enos Brown, headquarters Sterling's old stand. Hon. Clothes Cleaning & Pressing Co. Tel. Main 147. Suits called for and delivered.

Great bargain sale at Pacific Import Co. in ladies' and men's handkerchiefs. Stock must be cleared out. Queen Liliuokalani will give a reception Friday from 11 a. m. to 1 p. m., the occasion being her birthday.

The greatest muslin underwear sale of the year commences at A. Blom's store in Progress block, Thursday morning. A Walomao house and lot, 256 acres of land, cattle, horses, mules, wagons, harness, etc., are offered for sale. See ad, page 8.

The 75-foot flagpole at the Central fire station will be removed to the Capitol grounds and placed near the King street entrance. Monday, September 5 is Labor Day. At present there are no preparations under headway for the organized observance of the day.

Now is your chance to get a good harness cheap. The Schuman Carriage Co. will sell harness of all kinds at greatly reduced prices for one week only beginning Monday, the 22d.

When iron roofs are painted with "Arabic" the owners always feel a marked difference in the atmosphere. "Arabic" coats iron roofs fully 15 degrees. Are you satisfied with your typewriter? If not, examine the "New Converter," only \$35.00. Easy payments, \$5.00 down, balance \$1.00 week, at Wall, Nichols Co.

Judge De Bolt appoints P. D. Keiler, Jr., as master, to report on the final account of Cecil Brown, executor of the estate of Wm. Phillips, deceased, and to compute the inheritance tax. September 1st, for a few days only our Wash Tub and Reaxata brands boys' knee pants, 2 pairs for \$1.

The party of Mystic Shriners, who have been enjoying themselves in Honolulu for the past week, go to Hawaii today in the Kinau. They expect to visit the Volcano and return Saturday. Those wishing to get pineapples away to the Coast this season at the low prices that are prevailing had better do so by the Alameda of the 7th prox. as the fruit is becoming scarce and prices will soon rise. See ad on front page.

Kodaking never had such pleasures for the kodaker as at the present time. The new style kodaks are wonderfully constructed, great improvements made on film and by use of the kodak developing machine you can develop your films in camp, in your hotel room or wherever you may happen to be. Call at Honolulu Photo-Supply Co. and see all these new things.

Thetis Arrived At Dutch Harbor, Alaska

Commodore Macfarlane has received the following letter from Captain Hamlet of the revenue cutter Thetis, which shows that the good ship is not lost, as intimated by a local publication: Dutch Harbor, Alaska, July 14.

Mr. Clarence W. Macfarlane, T. H. Aloha Nui Oe:—Thetis arrived here today, all on board well; pealed off our white clothes four days from the islands when we ran into a fog; climate very different from that of Honolulu and surf bathing is not in vogue. We leave for the Arctic as soon as we can clean boiler and take in coal; expect to return here in about six weeks or two months; hope to be ordered back to Honolulu in the fall or spring. HAMLET.

Neatly furnished rooms at the Popular, \$1, \$1.50 and \$2 per week. 1249 Fort Street.

SIERRA WINS.

Word has been received that the Oceanic steamship Sierra passed the Parallels yesterday at 3 a. m., four hours ahead of the O. & O. steamship Coptic. Both boats left this port Tuesday, August 23, the Coptic at 10 a. m. and the Sierra about twenty minutes later. The Sierra carried the mails.

FOR MOOHEAU PARK. Bids have been opened at the Public Works for the construction of a pavilion at Moohau Park, Hilo, as follows: W. J. Moody, 65 days ..... \$4600. H. Kendall, 60 days ..... 3125. Jas. D. Lewis, 70 days ..... 3250. I. Erickson, 60 days ..... 2965. J. Makakohuku, 65 days ..... 2977. L. M. Whitehouse, 60 days ..... 3100.

Word has been received that the Oceanic steamship Sierra passed the Parallels yesterday at 3 a. m., four hours ahead of the O. & O. steamship Coptic. Both boats left this port Tuesday, August 23, the Coptic at 10 a. m. and the Sierra about twenty minutes later. The Sierra carried the mails.

Neatly furnished rooms at the Popular, \$1, \$1.50 and \$2 per week. 1249 Fort Street.

\$100 Reward

FOR PROOF that I did not make my samples. Anyone who cannot make good samples cannot do good work. For my work compare my samples with others.

NO LADY ASSISTANT. LOWEST PRICES IN THE CITY. NEW YORK DENTAL PARLORS 1057 FORT STREET

WORLD NEWS BY CABLE

(Associated Press Cables.) GREAT BATTLE INEVITABLE. Tokio, Aug. 29.—Amshanchan, which is now in Japanese hands, was the strongest safeguard of Liaoyang. As a result of its capture Kuropatkin can no longer avoid fighting and may expect a crushing defeat.

MORE RUSSIAN REGIMENTS. St. Petersburg, Aug. 29.—Four more regiments will be raised among the Caucasians. FIGHTING OR RETREATING. St. Petersburg, Aug. 29.—It is uncertain whether Kuropatkin is making a stand or retreating.

CZAR TO BESIEGED. St. Petersburg, Aug. 29.—An imperial decree has been issued granting the Port Arthur garrison credit for a year's service for every month in which they hold out between May and the end of the year. DISARMED BATTLESHIPS. Shanghai, Aug. 29.—The Russian warships have been disarmed.

SUGAR FACTORY BURNED. Berlin, Aug. 29.—The greatest sugar factory in Germany burned last night near Thorn. The loss was \$1,500,000. Sugar has risen three cents a hundred. TEMPLARS ON COAST. San Francisco, Aug. 29.—Grand Master of Templars Stoddard and his party have arrived.

NEGRO LYNCHED. Laramie, Aug. 29.—A negro prisoner in the jail here assaulted a girl with a razor in the jail kitchen yesterday. A mob quickly formed, broke into the prison and lynched the negro. Prisoner Killed In Fatal Fight. Halulu, an Oahu prison convict, was killed yesterday afternoon in a quarrel with another prisoner, named Wahlani. Both men were engaged in building the new prison wall. They were standing on a scaffold about fifteen feet from the ground. Halulu started a quarrel with his fellow worker. The men came to blows, grappled and lost their balance. Both fell to the ground, but Wahlani escaped injury. Halulu, however, struck his head on a jagged coral rock, receiving a small cut near the left ear.

Halulu did not seem to be seriously injured. He was taken to the hospital to have his wound sewed up. Shortly after his arrival there the man collapsed and died. A post-mortem examination showed that death was due to hemorrhage of the brain. The deceased had served several terms in the Reform School and later on in jail. As a matter of fact, he was almost a regular guest at the prison ever since he reached his majority. Wahlani is serving a one-year term for larceny.

ZAMLOCH POPULAR. Wizard Zamloch is making a big hit at the Orpheum during his present engagement, his entertainment being evidently of a character that suits both the climate and people of Honolulu. There is nothing about the wizard's program to worry an audience, unless indeed they insist upon puzzling their brains to find out how some of the wonderful illusions are produced. Every trick is up to date and introduced in most fascinating fashion by Zamloch, while "Billy," his lazy aide who, however, always manages to get there on time, is a material assistance to the charm of the performance. Zamloch changes some important tricks every evening, thus constantly varying his program and bringing every evening a number of returning patrons. Reserved seats may be arranged in advance every day from 9 until 5:30 at the Bergstrom Music Co.'s new store in the Odd Fellows' Building.

FOR MOOHEAU PARK. Bids have been opened at the Public Works for the construction of a pavilion at Moohau Park, Hilo, as follows: W. J. Moody, 65 days ..... \$4600. H. Kendall, 60 days ..... 3125. Jas. D. Lewis, 70 days ..... 3250. I. Erickson, 60 days ..... 2965. J. Makakohuku, 65 days ..... 2977. L. M. Whitehouse, 60 days ..... 3100.

Word has been received that the Oceanic steamship Sierra passed the Parallels yesterday at 3 a. m., four hours ahead of the O. & O. steamship Coptic. Both boats left this port Tuesday, August 23, the Coptic at 10 a. m. and the Sierra about twenty minutes later. The Sierra carried the mails.

Neatly furnished rooms at the Popular, \$1, \$1.50 and \$2 per week. 1249 Fort Street.

Word has been received that the Oceanic steamship Sierra passed the Parallels yesterday at 3 a. m., four hours ahead of the O. & O. steamship Coptic. Both boats left this port Tuesday, August 23, the Coptic at 10 a. m. and the Sierra about twenty minutes later. The Sierra carried the mails.

Neatly furnished rooms at the Popular, \$1, \$1.50 and \$2 per week. 1249 Fort Street.

Word has been received that the Oceanic steamship Sierra passed the Parallels yesterday at 3 a. m., four hours ahead of the O. & O. steamship Coptic. Both boats left this port Tuesday, August 23, the Coptic at 10 a. m. and the Sierra about twenty minutes later. The Sierra carried the mails.

Neatly furnished rooms at the Popular, \$1, \$1.50 and \$2 per week. 1249 Fort Street.

Word has been received that the Oceanic steamship Sierra passed the Parallels yesterday at 3 a. m., four hours ahead of the O. & O. steamship Coptic. Both boats left this port Tuesday, August 23, the Coptic at 10 a. m. and the Sierra about twenty minutes later. The Sierra carried the mails.

Neatly furnished rooms at the Popular, \$1, \$1.50 and \$2 per week. 1249 Fort Street.

Word has been received that the Oceanic steamship Sierra passed the Parallels yesterday at 3 a. m., four hours ahead of the O. & O. steamship Coptic. Both boats left this port Tuesday, August 23, the Coptic at 10 a. m. and the Sierra about twenty minutes later. The Sierra carried the mails.

Neatly furnished rooms at the Popular, \$1, \$1.50 and \$2 per week. 1249 Fort Street.

Word has been received that the Oceanic steamship Sierra passed the Parallels yesterday at 3 a. m., four hours ahead of the O. & O. steamship Coptic. Both boats left this port Tuesday, August 23, the Coptic at 10 a. m. and the Sierra about twenty minutes later. The Sierra carried the mails.

Neatly furnished rooms at the Popular, \$1, \$1.50 and \$2 per week. 1249 Fort Street.

Word has been received that the Oceanic steamship Sierra passed the Parallels yesterday at 3 a. m., four hours ahead of the O. & O. steamship Coptic. Both boats left this port Tuesday, August 23, the Coptic at 10 a. m. and the Sierra about twenty minutes later. The Sierra carried the mails.

Neatly furnished rooms at the Popular, \$1, \$1.50 and \$2 per week. 1249 Fort Street.

Word has been received that the Oceanic steamship Sierra passed the Parallels yesterday at 3 a. m., four hours ahead of the O. & O. steamship Coptic. Both boats left this port Tuesday, August 23, the Coptic at 10 a. m. and the Sierra about twenty minutes later. The Sierra carried the mails.

Neatly furnished rooms at the Popular, \$1, \$1.50 and \$2 per week. 1249 Fort Street.

Word has been received that the Oceanic steamship Sierra passed the Parallels yesterday at 3 a. m., four hours ahead of the O. & O. steamship Coptic. Both boats left this port Tuesday, August 23, the Coptic at 10 a. m. and the Sierra about twenty minutes later. The Sierra carried the mails.

Neatly furnished rooms at the Popular, \$1, \$1.50 and \$2 per week. 1249 Fort Street.

EYES EXAMINED

"Eyes examined" may mean something for you or it may mean nothing. It depends upon the skill, knowledge, and fitness of the examiner. Our examinations are conducted after the most approved methods, and, back of all, we have adequate knowledge of the eye and its needs.

A. N. SANFORD, OPTICIAN. BOSTON BUILDING, FORT STREET. Over May & Co.

Fire! Fire! Fire! Another residence destroyed by fire for want of water in time, but had a Quick Action Fire Extinguisher

been in the house the fire could have been extinguished. So avoid the 10 to 20 minutes' delay of the Fire Department by having your house equipped with our Fire Extinguishers, for when you need it you need it badly, and there is no other machine manufactured which you can rely upon to work properly at that critical moment. Can be operated as successfully by a Woman, Child or Man as when in the hands of a trained fireman. For further particulars and circular inquire of WASHINGTON LIGHT CO., SOLE AGENTS. TEL. MAIN 145.

PAPERING A NEW HOME. If you are renting a new house which has not yet been papered the property owner is usually glad to have you choose the paper. Whether you come here first or last doesn't matter, but be sure to come. We have just the paper you want and this you can have every room decorated according to your own wishes.

Lewers & Cooke, Limited, 177 S. King Street.

RICHEST SOIL and BLACK SAND. In town for sale cheap. See us at once.

Lord & Belser. The Lewin-Meyer Co. Epicurean and Palace Goods. E. J. WALKER, Wholesale Agent.

IF YOU WISH TO ADVERTISE IN NEWSPAPERS ANYWHERE AT ANYTIME Call on or Write B. C. DAKE'S ADVERTISING AGENCY 64 & 66 Merchants' Exchange SAN FRANCISCO, CAL.

Mrs. HARRIET C. EVANS, Hair Dressing, Facial Massage, Manicuring and Chiroprody. No. 310 Boston Bldg. HONOLULU. Evening Work by Appointment Only.

ALEXANDER COCKBURN, VALUATOR, BUSINESS AGENT, NOTARY PUBLIC. 846 KAAHUMANU ST., Honolulu.

Granite and Bronze Monuments

At Prices To Suit.



Hawaiian Iron Fence and Monument Works, Ltd 176-180 KING STREET.

NOW WE'RE OFF?

We are prepared to supply the People of Honolulu with Freshest of ISLAND MEATS. Also, Garden Produce of all kinds; Butter, Eggs, Chickens, Turkeys, Sucking Pigs, Bacon, Ham; in fact, everything that A FIRST-CLASS MARKET is called upon to furnish.

The ISLAND MEAT CO.,

JAS. E. WESTBROOKE, Manager. TELEPHONE MAIN 76. FORT ST., OPP. LOVE BLDG.

NEW IDEAS IN NEW FURNITURE

FOR THE SUMMER TIME.

PORTER FURNITURE COMPANY,

YOUNG BUILDING, HOTEL STREET. TELEPHONE 35. THE FAMOUS DOUGLAS

BISMARCK STABLE CO., LTD.

WAILUKU, MAUI. TELEPHONE 226. BISMARCK BRANCH STABLES LAHAINA, MAUI.

Hacks, Carriages, Buggies and Saddle Horses on short notice. Carriages meet all steamers. Competent drivers, reasonable rates, new vehicles and live stock.

Alexander & Baldwin LIMITED. OFFICERS. J. B. Castle, First Vice President. W. M. Alexander, Second Vice Pres. J. P. Cooke, Treasurer. W. O. Smith, Secretary. Geo. R. Carter, Auditor.

Sugar Factors and Commission Agents. AGENTS for Hawaiian Commercial & Sugar Co., Haiku Sugar Co., Pala Plantation Co., Nahiku Sugar Co., Kihel Plantation Co., Hawaiian Sugar Co., Kahului Railroad Co.

WM. G. IRWIN & CO., LTD. Agents for Western Sugar Refining Co., San Francisco, Cal. Baldwin Locomotive Works, Philadelphia, Pa. Newell Universal Mill Co., Manufacturers of National Cane Shredder, New York, N. Y. Paraffin Paint Company, San Francisco, Cal. Ohlandt & Co., San Francisco, Cal. Pacific Oil Transportation Co., San Francisco, Cal.

CASTLE & COOKE, Ltd

HONOLULU. Commission Merchants Sugar Factors

AGENTS FOR— The Ewa Plantation Co., Oahu Sugar Plant Co., Onomea Sugar Co., The Waihua Agricultural Co., The Kalaheo Sugar Co., The Waihee Sugar Mill Co., The Fulton Iron Works, St. Louis, Mo. The Standard Oil Co., The Geo. F. Blake Steam Pumps, Weston's Centrifugals, The New England Life Insurance Co. of Boston, The Aetna Fire Ins. Co. of Hartford, Conn., The Alliance Assurance Co. of London.

C. Brewer & Co., Ltd. Queen Street, Honolulu, T. H.

AGENTS FOR— Hawaiian Agricultural Co., Oahu Sugar Plant Co., Onomea Sugar Co., Hooma Sugar Co., Wailuku Sugar Co., Makae Sugar Co., Haleakala Ranch Co. The Planters' Line of San Francisco Packets, Chas. Brewer & Co.'s Line of Boston Packets.

List of Officers: C. M. Cooke, President; George Robertson, Manager; E. F. Bishop, Treasurer and Secretary; Col. W. F. Allen, Auditor; P. C. Jones, C. M. Cooke and Geo. R. Carter, Directors.

P. O. Box 961. Tel. White 931. SANG CHAN, MERCHANT TAILOR, HOTEL STREET, HONOLULU. Suits made to order in the latest styles. Perfect fit guaranteed. Clothing cleaned, dyed and repaired.

S. Yokomizo, Great Reduction in Price of Crushed Rock, as follows: No. 2 1 cubic yard \$1.70. No. 3 1 cubic yard \$1.80. No. 4 1 cubic yard \$2.05. Delivered to any part of city. Office Queen Emma Hall, corner Nuuanu and Beretania; Tel. Blue 1211.

Tam Kim Kee, KING ST. NEAR RIVER. Hardware, Haviland Crockery, Glass ware, Plated Silverware, Milk Pans, Etc. 2831-1m.

S. SAKI, Dealer in Bamboo Furniture, Picture Frames, Grass Linen, Drawn Linen, Table Cloths, Collars, Neckties, etc. 563 S. BERETANIA ST.

These New Things Now On Parade At Sachs'

Pretty novelties in embroidered Oxford waist patterns are just in and we want you to see them in all their freshness and beauty.

Among the other new goods are French waistings by the yard for ladies' wear. They are both pretty and practical.

Colors are white, embroidered either in white or black, and tan, embroidered in black.

Here's a new line of Galateas and Chevots for men's and boys' shirts. Also for boys' suits. Width 30 inches. 20c and 25c a yard.

Ladies are delighted with our new dainty white back combs with brilliant settings. They're especially pretty for evening wear.

See the celebrated "Money-Bak" black silks in the show window.

Guaranteed not to split, crack or break. Money returned if they do.

N. S. Sachs Dry Goods Co., Limited,

CORNER FORT AND BERETANIA STREETS

POLO BOYS FEASTED YACHTS AND LAUNCHES

DINNER AND DANCE AT MOANA HOTEL

POLO WEEK ENDS WITH SOCIAL FLOURISH WHERE VICTORY AND DEFEAT ARE FORTGOTTEN IN JOY.

The polo dinner and ball at the Moana Hotel last evening was a fitting close to the social pleasures of a week made gay by the presence in the city of the polo men and their friends from Maui and Kauai.

The dinner was elaborate in every detail. It was served in the Moana reception room and marked by the greatest good feeling. There were speeches, songs and jests that kept the diners in a ripple of merriment.

Governor Geo. R. Carter, S. E. Damon, Harold Castle, Frank Baldwin, Harry Baldwin, Sam Weller, Arthur Rice, Rue Spalding, James Spalding, George Angus, R. W. Shingle, Geo. Thielan, Allan Dunn, Clarence Cooks, Wm. Williamson, G. Dellinger, W. H. Babbitt, Harry Cobb, Clifford Kimball, S. H. Derby, D. B. Macdonald, Chas. Rice, D. P. R. Isenberg, J. M. Riggs, George Rolph, B. Griggs Holt, J. F. Humburg, A. M. Brown, C. M. V. Forster, A. Lewis Jr., Percy Morse, Geo. Dennison, A. F. Judd, John Waterhouse, Walter Macfarlane, Capt. C. Humphrey, Will Rawlins, Jas. Dougherty, A. Krumbaahr, W. O. Alken, John Fleming, Geo. Alken, Joe Taylor, E. Peck, Geo. Fuller, D. W. Anderson, Alfred Castle, M. F. Prosser, Richard Ivers, Chas. Chillingworth, Fred. Waterhouse, J. S. Walker, Dr. James Judd, Harry Macfarlane, Geo. McClellan, Geo. H. Brown, Paymaster Brown, U. S. N., Prince D. Kawananakoa, Prince Kalaniano'ole, A. W. Carter, C. W. C. Deering, Fred. Knight, L. R. Freeman, Dr. Humphris, Judge Lindsay, L. von Tempky, W. H. Rice Jr., Malina, Richard Cooke, Dr. Murray, Fred. Baldwin, T. A. Hays, H. W. Lake.

After the banquet, the company proceeded to the large dining room which had been transformed into a dancing hall. The big room had been decorated throughout a la polo. Spurs and saddles confronted the view on every side. Palms and the club colors completed the scheme.

The finest music was rendered for the dancers, who arrived in large numbers as the gay program gathered full swing.

REGATTA DAY WILL SEE THEM IN EVIDENCE

YACHT RACE TO PEARL HARBOR AND BACK FOR THE PICKER CUP - HONOLULU'S LAUNCHES.

The lovers of yacht-racing hope to see a prominent place on the program for a race for the members of the Hawaii Yacht Club. The yachtsmen are planning for a handicap race for which Vice Commodore H. E. Picker has hung up a cup. It will be a race open for large and small yachts over a course that will give all classes of boats a fair advantage.

The course as mapped out now begins in the Honolulu harbor. The yachts will sail out and around the bell buoy, down to Pearl Harbor, around Ford Island, back to Honolulu, finishing at the spar buoy.

It has been suggested that a race for launches would be an interesting feature for Regatta Day. In the East launch races are having a great vogue and are popular. Here there are a large number of launches of different size and make. Mr. Macfarlane and Commodore H. E. Cooper, both of the Yacht Club, have good launches, and were such an event provided for, there is no doubt but that it would be well filled by ambitious contestants.

Pearl City Republicans Adopt Resolution

The Republicans of the Sixth Precinct of the Fifth District held a meeting last night at Pearl City. The meeting was held in the court house and over a hundred members of the Republican club were present. The main topic of discussion was the quota of representation on the Central Committee accorded to the outside districts. The following resolution was adopted: Resolved: That the Sixth Precinct Republican Club, of the Fifth District, hereby ratify and confirm the action taken by our delegates to the Territorial Convention, at a caucus meeting of the Fifth District delegates held on Saturday evening, the 27th of August, 1904, the said action of our delegates (supported by the delegates from the Fourth and Fifth Precincts of the Fifth District), owing to a resolution passed at said caucus for new apportionment of the country precincts of the Fifth District thereby cutting its representation on the Central Committee, and consequently the opportunity for representation on the Executive Committee, they deemed it advisable to refuse to nominate a candidate for the Central Committee in the caucus, the caucus having assumed the responsibility which would result from such a cut after every phase of the question was argued and every appeal our delegates could make for three representatives for the Central Committee; our delegates knowing that with three members on the Central Committee the campaign might successfully be carried on, and further with three delegates for the Central Committee from this large area of territory, covered by the outer precincts of the Fifth District we would be assured of one member of the Executive Committee, and could compel not only recognition of rights through the proper channels but would be in an independent position to comment, recommend and oppose questions of importance to the country affecting the interests of the country precincts, and to further confirm or refuse to ratify acts of the administration conflicting with party interests and the interests of our locality and that a copy hereof be attested by the secretary and forwarded to the convention in Hilo.

Resolved, in view of the position taken by the delegates of this Sixth Precinct Club before the caucus with the other precincts of this island and this Fifth District that no nominations be advanced for the Central Committee unless the full quota of three (3) delegates is apportioned for the outer precincts hereby throwing the responsibility upon the caucus in convention of the Fifth District, the members of the club viewing the situation most seriously and feeling that no apportionment under three delegates to the Central Committee can satisfactorily handle the campaign, and that a copy of this be attested by the secretary and forwarded to the general convention in Hilo.

Fourth District Caucus Held Last Night

The Fourth District Republican delegates held a caucus last evening at Republican headquarters and settled a number of questions. The caucus was presided over by Clarence Crabbe. On motion of J. A. Hughes, seconded by J. W. Jones, it was voted that A. G. M. Robertson be the choice of the Fourth District for chairman of the Central Committee. Kuhio was unanimously endorsed for Delegate to Congress.

A motion by J. A. Hughes that Stephen L. Deeba of Hilo be the choice of the District to make the speech nominating Kuhio, carried. F. E. Thompson was chosen to second the nomination for the Fourth District. The following were agreed upon to serve on convention committees: Credentials—H. E. Murray and Capt. Sam Johnson. Rules and Permanent Organization—J. A. Gilman and C. A. Long. Platform—A. G. M. Robertson and W. T. Rawlins.

The apportionment of the six members from the Fourth District on the Central Committee was a subject of extensive debate. A motion by W. W. Harris prevailed as follows: First precinct, W. W. Harris; second precinct, W. T. Rawlins; third and seventh precincts, E. Faxon Bishop; fourth precinct, A. G. M. Robertson; fifth and sixth precincts, Captain Sam Johnson; eighth precinct, Mr. Hoal.

So far as the Fourth District is concerned the matter of selecting a permanent chairman was left to the Island of Hawaii.

EUROPE NOT WORRIED.

Berlin, Aug. 18.—The Foreign Office, taking note of the possible rupture between China and Japan in connection with the repairs to Russian war vessels at Shanghai, expresses the view that Japan may send a small warship into the harbor to ascertain whether the disarmament of the Russian ships has occurred. But the officials here do not believe that the matter has reached a critical stage, or that a serious situation will result. The German view, naturally, is that China should take the same course toward the Russian vessels at Shanghai as Germany did toward those which sought refuge at Taing Tau.

International Poultry Food will make the hens lay eggs. Try it and be convinced. California Feed Co. and City Feed Store.

PORT ARTHUR DOOMED.

St. Petersburg, Aug. 16.—The belief that Port Arthur is doomed increases daily. It is an open secret that, while provisions are plentiful, the ammunition expended since the beginning of the war is stupendous, and there can not be a large supply. The official Viesnik publishes news of another attack four days ago, the result of which is unknown. The news that the Vladivostok squadron has at last been facted and badly battered causes the Russ to lament Russia's singular lack of fortune in the war. The Birchewa, referring to the attitude of England and America, says: "It is hopeless to expect Europe to intervene to prevent breaches of international law. If these Powers show themselves helpless, no shot can prevent other countries being drawn into the war."

HAWAII REGULARS.

Company E of the ex-regulars of the Republic of Hawaii will give their annual tea and smoker at the Bungalow tomorrow night. About one hundred are expected to be present.

HOSTETTER'S CELEBRATED STOMACH BITTERS ALL WOMEN

Who wish to retain or regain their health must see to it that functional regularity is established. This is an all-important question and the wise woman will resort to Hostetter's Stomach Bitters at the first symptom of any derangement, because she knows it always gives prompt relief. Pains in the Back, Bloating, Vomiting, Headache, Indigestion, Dyspepsia, Fainting Spells and Sleeplessness are all danger signals which require the Bitters. Try one bottle.

HOSTETTER'S STOMACH BITTERS

LIKED IN LONDON!

LATOILA is known everywhere and liked wherever it is known. The following testimonial is from Mr. J. E. Garratt, the well-known importer, exporter, agent and factor, 17, Southwark St., London, S. E., England, who writes: "I have been, from experience in my own family with the same bottle of LATOILA that you send, both in the case of my wife and one or two young children, I want to say that LATOILA is certainly the very best shampoo and cleansing preparation of which I have ever had personal experience. With compliments, Yours faithfully, J. E. GARRATT." You will be happy when you use LATOILA. ALL DRUGGISTS IN HONOLULU. REFUSE SUBSTITUTES. SAMPLES FREE. Satisfaction guaranteed or money refunded.

BIG CURES MEN & WOMEN. The BIG Q for untimely discharges, inflammations, irritations or ulcerations of mucous membranes. Prevents conception. A painless remedy for Catarrh and Stere Eyes, Gonorrhoea, Gleet, Whites, etc. SOLD BY CHEMISTS. Circular sent on request. Prepared at THE EVANS CHEMICAL CO. CINCINNATI, O. U. S. A. \$1.00

NATIVE HATS AND NIHAU MATS. Also CURIOS of all descriptions at living prices.

THE WOMAN'S EXCHANGE, HOTEL NEAR FOP. Henry C. Vida, CONTRACTOR. sidewalks, Curbing, Filling, and roofing Promptly Attended to. PHONE MAIN 16

Jos Schwartz, Watchmakers' Materials and Jewellers' Supplies, COR. FORT and KING ST.

FINLAND'S GOVERNOR. Helsinki, Finland, Aug. 18.—Prince Obolensky today assumed his functions as Governor General of Finland. Upon his arrival here he was driven to the Uspensky Cathedral, where he attended divine services. Subsequently he Governor held a grand reception at the Imperial Palace. The Governor will start at once on a tour of inspection of the Grand Duchy.

Prince John Obolensky, formerly Governor of Kherson, and late of Khar-koff, was appointed July 4 last to succeed as Governor General of Finland General Bobrikoff, who was shot June 9 of the present year by a student, Eugene Schaumann, son of ex-Senator Schaumann General Bobrikoff died the following day.

According to a dispatch to the Associated Press August 5, Princess Obolensky, wife of the new Governor General, is said to have received many unthreatening letters declaring that her husband would be killed within a week after his arrival in Finland.

Company E of the ex-regulars of the Republic of Hawaii will give their annual tea and smoker at the Bungalow tomorrow night. About one hundred are expected to be present.

Would You Ride In a "Prairie Schooner"? INCANDESCENT LIGHT. Call or write for estimate. Hawaiian Electric Co., Limited, Office King Street Tel. Main 390

Choice Table Delicacies. Some choice kinds of cheese and other eatables at our delicacy counter that will prove a great addition to the table. Try them: Edam, Pinesole, Oregon Full Cream Brick, California Full Cream Fromage de Brie, Camembert, Neufchatel, Sierra, Schloss, Kase and Breakfast Cheese. Spiced and Sweet Pickles, German Dill Pickles, Mixed Pickles, and Extra Fine Ripe Olives, Spanish Queen Olives and California Green Olives—all these in bulk. Smoked Beef Tongue, Chipped Beef, New Smoked Salmon, Bloater, and Aberdeen Herrings, Bismarck, Holland and Spiced Herring a specialty. If you are not getting good butter try our CRYSTAL SPRINGS BUTTER. It is the best obtainable. Metropolitan Meat Co., Ltd.

Oceanic Steamship Company TIME TABLE. The steamers of this line will arrive and leave this port as hereunder: FROM SAN FRANCISCO: ALAMEDA SEPT. 2, SIERRA SEPT. 14, ALAMEDA SEPT. 25, SONOMA SEPT. 6. FOR SAN FRANCISCO: ALAMEDA SEPT. 9, SONOMA SEPT. 21, ALAMEDA SEPT. 28, VENTURA SEPT. 4. In connection with the sailing of the above steamers, the agents are prepared to issue, to intending passengers, coupon through tickets, by any railroad from San Francisco to all points in the United States, and from New York by any steamship line to all European ports. FOR FURTHER PARTICULARS APPLY TO

Wm. G. Irwin & Co., Ltd. OCEANIC S. S. CO. GENERAL AGENTS.

Pacific Mail Steamship Co. Occidental and Oriental Steamship Co. and Toyo Kisen Kaisha. Steamers of the above companies will call at Honolulu and leave this port on or about the dates below mentioned: FOR JAPAN AND CHINA: SIBERIA SEPT. 6, COPTIC SEPT. 15, KOREA SEPT. 27, GAELIC SEPT. 27, MONGOLIA SEPT. 27, CHINA SEPT. 27, MANCHURIA SEPT. 27, DORIC SEPT. 27, SIBERIA SEPT. 27, COPTIC SEPT. 27, KOREA SEPT. 27. FOR SAN FRANCISCO: KOREA SEPT. 8, GAELIC SEPT. 15, MONGOLIA SEPT. 24, CHINA SEPT. 7, DORIC SEPT. 12, SIBERIA SEPT. 12, COPTIC SEPT. 12, KOREA SEPT. 12.

For general information apply to H. Hackfeld & Co., Ltd., Agents.

Merchants' Parcel Delivery. Parcels, Furniture, Baggage, Etc., moved to any part of the City. Will meet steamers and check outgoing baggage. Prompt and reliable service. Phone Main 109.

Be Progressive. HORSE SHOEING. W. W. Wright Co. La. have opened a horse-shoeing department in connection with their carriage shop, etc. Having secured the services of a first-class shoer, they are prepared to do all work entrusted to them in a first-class manner.

White Bros. The Weekly Edition of the Evening Bulletin gives a complete summary of the news of the day. Blank books of all sorts, ledgers, etc., manufactured by the Bulletin Publishing Company.

Read--Understand--"Drink More"

What the American Cyclopaedia says:—"Carbonic Acid Water (SODA WATER) improves the taste and increases the sanitary effect of drinks; is the best antidote for alcohol and lessens the desire for spirituous liquors. It has a generally exhilarating effect upon the system, essentially promotes digestion, checks too great acidity in the stomach and is a much esteemed remedy in fibrile diseases."

LET US SUPPLY YOU WITH OUR CARBONATED BEVERAGES—YOURS FOR HEALTH

Consolidated Soda Water Works Co., Limited, Tel. Main 71

ANOTHER LARGE SHIPMENT

These safes are now on the floor and ready for inspection—THE HERRING HALL MARVIN SAFE is so constructed that its contents are absolutely preserved. A scientific study of the effect of fire on safes combined with 80 years' experience in safe construction, warrants the manufacturers to make the claim that their safes are positively perfect. We carry a large assortment of safes from \$50 up. Cash or installment.

THEO. H. DAVIES & Co., Limited,

J. HOPP & Co., Of King and Bethel Streets, have received a fine shipment of Ostermoor Patent Elastic Felt Mattresses. These are now on sale. Anyone looking for health, comfort and sleep should not fail to inspect these, as they are the best mattresses made for this climate.

NEW LINE OF Clothing, Pajamas and Neckwear, Ties, Etc., at J. Lando, Hotel St. Store.

Weekly Bulletin, \$1 a Year

# EVENING BULLETIN

Published Every Day Except Sunday, at 120 King Street, Honolulu, T. H., by the

BULLETIN PUBLISHING CO., LTD. WALLACE R. FARRINGTON, Editor

Secured at the Postoffice at Honolulu as second-class matter.

### SUBSCRIPTION RATES.

Evening Bulletin. Per month, anywhere in U. S. \$ .75 Per quarter, anywhere in U. S. 2.00 Per year, anywhere in U. S. 8.00 For year, postpaid, foreign, 11.00 Weekly Bulletin. Six months, anywhere in U. S. \$ .50 Per year, anywhere in U. S. 1.90 Per year, postpaid, foreign, 1.50

Postoffice Box 256 Postoffice Box 718

TUESDAY, AUG. 30, 1904.

They're off and the campaign is on.

Weisbarth was born about two hundred years too late. In those days he would have been one of the kings of the sea.

The temperature has reduced one degree and the trades show signs of returning. Sometimes the weather responds to a general kick.

Kuropatkin seems to have finally reached the place where ability to retreat will demonstrate his mastery capacity in the art of war.

Announcement of Judge Gaibrath's return comes as a surprise. He is a first class citizen, however, and Hawaii can't have too many men of his caliber.

When the Governor contemplates what Maui is doing to kill him with kindness, a season of physical culture to prepare for the attack will be in order.

A printing outfit is one of the first details of equipment shipped to Panama by the Government. Uncle Sam appreciates what is the foundation of all progress.

General Stuessel's announcement that he may be able to hold out six weeks is a very direct method of stating that the Fort Artisan plan is ready to be plucked by Japan.

War has its horrible opportunities for the men in the business. Russia, owing to its heavy losses has closed the naval college that officers and students may go to the front to take commands.

Visiting polo players are to be congratulated on the good season of sport they have given Honolulu. When the next season rolls around it is to be hoped that Honolulu's financial status will warrant its being in the game.

Russia has reached the point where the only use for a navy is to make international trouble by occupying neutral ports. No ice-free haven is open to Russian ships and the Baltic squadron, if it ever arrives, would be forced to fight against disastrous odds or put on skates to escape.

Hawaii sometimes thinks it has troublesome politics and the people are incapable of getting together. It has only to contemplate the Missouri convention that took 785 ballots and was still deadlocked, to be convinced that on the whole this Territory is entitled to a medal for peacefulness.

What the small farmer program needs in Hawaii is the same kind of support and detailed attention that is given, for instance, to the labor problem on plantations, the taxing of mercantile stocks, or the reduction of passenger rates to the Coast. And it will not be a success till it gets it. Hawaii cannot appeal to the small farmer with particularly favorable force when he is regarded as the rag end of a lost cause by leading business organizations.

Candidates for Vice President may not have much to do after they get in office, but they are the working arm of the campaign especially when the head of the ticket is seeking a second term. Four years ago Roosevelt was worked to the limit of physical endurance during the campaign. This year Fairbanks is slated to appear from Vermont to California. Parker's game is to keep quiet and the only reason Davis doesn't carry the brunt of the battle is the limitation of age.

The Alpine Club of Wailuku and Manager Church of Haleiwa are developing a healthful sport that is ever attractive to residents and might well be worked up in connection with tourist promotion. The high peaks on Oahu, Maui and Hawaii offer some of the best mountain climbing to be found anywhere on earth with just enough difficulties to overcome to add spice of excitement and wonderful appetites. The expense is small and the reward in magnificent scenery and vigorous exercise is all that can be desired.

As the election and legislative periods approach the public-spirited citizens of Oahu should not forget the Tantalus park reservation. Tantalus heights are each year becoming more popular for residence and the time is not far distant when the general public may be shut out of this section as

It has been from Waikeiki houses through private ownership. The Territory owns a good sized tract on Tantalus that should be set aside as a park reservation, so that the people may be sure of one place in the higher altitudes that is free to all. What's needed is for citizens or some organization to make it their business that legislative action be taken. There is no danger of opposition, but indifference may cause failure through default.

### FACILITATES THE VOTING.

Division of the precincts so that the voting divisions of the Territory are of practical working size, is another move by Governor Carter which evidenced proper regard for the convenience of the people. Such opposition or criticism as may arise from purely partisan motives must give way to common sense recognition of the Governor's duty in the premises.

The primary purpose of precinct division is to facilitate voting on election day. Every American citizen is entitled to cast his ballot and have it counted honestly. The size of a precinct may not have any effect on the honesty of the count but does have a distinct bearing on the citizen's ability to cast his vote. Election day in many of the larger precincts has found booths overcrowded, and men forced to stand in line for hours to get inside the voting booth. The crowded voting places combined with the long distances some of the voters have to travel has in many instances made the privilege of voting the most difficult and inconvenient item in a citizen's participation in public affairs.

If the disposition of the administration were to shut out votes, the officials would refuse to divide the precincts. With each subdivision made so as to give 200 voters more or less to the precinct, every man is given ample time to reach the voting place and avoid mistakes in marking his ballot.

From the purely partisan standpoint the small precinct is preferable for legitimate party workers of every faith. Increase in the number of precinct officers assures more political workers and more careful canvases of the voters. There is less opportunity for tricky manipulation, but greater freedom for honest effort in appealing to the good judgment and decency of the voter. The small precinct presents few favorable surroundings for the hoodlum trouble-maker and the more this influence is eliminated the better.

Voters must see in the Governor's action a desire and intent to promote the interests of the people, for voting is the most important duty the citizen has to perform.

### STATEMENT OF FACT.

[Bulletin, Aug. 27.] Reference to the communications published more clearly demonstrates what is daily exemplified by the morning paper, that it is absolutely lacking a spirit of fair play and cannot appreciate it in others. Unlike the Advertiser, this paper exercises no censorship over the communications submitted. This paper's only restriction is that the communications shall be accompanied by the name of the author and shall not contain libellous matter. We recognize that the people have a right to their opinions. Whether the sentiments contained in communications are at variance or coincide with those of this paper makes no difference. The Advertiser, on the other hand, exercises a strict censorship over communications, publishing only those coinciding with its narrow opinions and if support of this character is not forthcoming, members of the staff are called upon to supply the desired material.

[Bulletin, Aug. 29.] There is no doubt that nine-tenths of the communications published in the morning paper are office-written, and the other tenth is composed by J. W. Girvin and a "Mr. Mendall," whom the paper had to admit it could not discover when asked to produce the author.

### THE CONFESSION.

[Advertiser, Aug. 30.] Another thing: Nine-tenths of the letters from the public appearing in the Bulletin are rejected communications to the Advertiser. The Bulletin is the most convenient waste-basket we have.

Read "Wants" on page 6.

## Cannot Afford To Lose

Have you deeds, mortgages, insurance policies, or other papers that you do not care to lose? If so, we advise you to rent one of our Safe Deposit Boxes.

We invite you to call and inspect.

### THE HENRY WATERHOUSE TRUST COMPANY, LTD.,

Corner Fort and Merchant Streets, Honolulu, Hawaii.

### STOPS ROAD STRIKE

(Continued from Page 1.)

When Mr. Atkinson went to Hawaii and Maui he had several little matters to look up, several kicks to investigate, several sore hearts to console and numerous matters requiring diplomatic tactful and thoughtful consideration. Among these more or less important commissions it became his duty to inquire into the somewhat confused state of affairs existing in connection with the Whitehouse contract on the Ookala road; in this matter it will be remembered that the employment of Japanese labor stirred up the citizen element and a demand was made to the effect that none but citizens be employed on the road work; then it seemed that enough citizens could not be secured to complete the work in the time specified in the contract and a petition from the citizen laborers was forthcoming asking that the deficiency be made good by Japanese labor.

About the time Secretary Atkinson reached that scene there was a strike on. The Hawaiian laborers were dissatisfied, although their cause of dissatisfaction is not made clear, and the work was threatened with a hold-up. At any rate, as Atkinson's wireless message reveals, the persuasive Secretary went among the men and learned their complaint. This complaint is not stated in the wirelessgram. Atkinson settled the strike, the men went back to work and, as a result, none but native Hawaiian laborers are working on the road.

Atkinson is credited with having achieved a difficult task and his full explanation of the difficulty is awaited in official circles with a great deal of interest. That none but Hawaiians should now be employed on the contract is deemed a very happy arrangement.

### MORE PARKER FIGHT.

Judge Gear this forenoon listened to lengthy argument in the Parker ranch controversy, hearing a motion for a bill of particulars of allegations against A. W. Carter, guardian of Annie T. K. Parker, minor, and motion to strike from counter affidavits of Parker, Low and Wundenberg certain alleged scandalous and impertinent allegations.

### NEW GUN-SIGHTS.

Washington, Aug. 18.—In the Bureau of Ordnance plans are being drawn for the re-sighting of all the guns in the Navy. The rapid-fire guns will be fitted with a new telescopic sight, which will permit of continuous aim. The cost for this work will be large, but its immediate execution is declared to be necessary.

Tests are soon to be conducted with a new range-finder and the ships of the battleship squadron are to be fitted with range-finders of a design which has recently been tested and found satisfactory. Tests also have been ordered of a new type of shell known as "tracers," which are used for night firing and which are illuminated so that they trace the course of the projectile and enable the gun-pointers to note the effect of the fire.

## Men's Opportunities

Made-to-order clothes for men at greatly cut prices. Materials on hand and must be sold at once as I leave the islands.

Cash prices only; workmanship guaranteed.

Sack suits, three pieces, full lined.

Were always \$30 now \$25

Light summer business suits, 2 pieces.

Were \$22.50 ..... now \$19

Were \$18.00 ..... now \$16

Tuxedos, silk lined.

Were \$40.00 ..... now \$35

All other clothes in proportion.

### Geo. A. Martin,

MERCHANT TAILOR.

Fort Street.

### GOLF CLUB GUNFISI

### INTERESTING GAME IS PLAYED AT MOANALUA

### ANOTHER MATCH TO TAKE PLACE IN OCTOBER — MANY NEW MEMBERS JOIN THE CLUB.

The Honolulu Golf Club held its second foursome competition of the season last Sunday, a very interesting game being the result.

Players to the number of twenty-eight were on hand at the time of the draw, 10 a. m. In the first round Dougherty and Glass beat Murray and Dunn 2 up and 1 to play. Prince Cupid and A. Garvie were beaten by Derby and Sheldon, 2 up. Munro and Jamieson beat High and Anderson, 2 up and 1 to play. Greig and Sinclair won from D. Ross and S. E. Wall, 3 up and 2 to play. Laird and Spivalo won from Macfarlane and Beggs, 2 up and 1 to play. Cockburn and Brown won from Hartwell and Mc..... 2 up and 1 to play.

Second round—Dougherty and Glass won from Derby and Sheldon, 1 up. Greig and Sinclair won from Munro and Jamieson, 1 up (after a tie). Cockburn and Beggs were beaten by Laird and Spivalo, 2 up and 1 to play. Thayer and Anderson beat Lake and Macfarlane, 2 up and 1 to play.

Third round—Greig and Sinclair won from Dougherty and Glass, 2 up and 1 to play. Thayer and Anderson won from Laird and Spivalo, 2 up and 1 to play.

Fourth and final—H. B. Sinclair and W. T. Greig won from D. W. Anderson and W. W. Thayer after an exciting game by 1 up.

The winners were the recipients of two handsome cups presented by the club. The course was in excellent condition, the putting greens being particularly good.

The club has during the past week welcomed eleven new members. They are as follows: A. W. Spivalo, Dr. Murray, Dr. High, Allen Dunn, Jas. Dougherty, Laird, Geo. Brown, H. Wingate Lake, Hartwell, Guy Macfarlane, Webb Beggs.

A stroke competition will be held on September 25th, 1904, draw at 10 a. m. prompt. A match tournament will begin in October over the same course; entries for this tournament close September 25th. Members will be postcarded at a later date to keep them in mind of the above dates.

Thanks of the officials and members of the club are due to the Hon. S. M. Damon for the use of this beautiful golf course and to Mr. Don MacIntyre for the excellent condition in which it is kept.

### HEADS TOGETHER

(Continued from Page 1.) Another lot: Should the Territorial Government now be called upon to prove its title to the land it holds, in connection with the Lahaialuna institution, it has no original record in regard to the transfer of the property to the Hawaiian Kingdom; the papers are all destroyed. However, the Territory has in its possession papers to show that there were transactions of transfer.

There have been disputes between the Government and the Bishop Estate concerning land titles there and there have been compromises, exchanges of land, rights, the Government making concessions to the Bishop Estate in consideration of concessions made to the Government by the Bishop Estate. These mutual concessions saved expensive litigation, time and an immense amount of trouble. While the Territory has now practical control of the situation there are nevertheless important points which call for simplification and final determination.

Chief of the considerations on hand is the desire to add to the attractions of the Lahaialuna school an agricultural instruction department for which Federal assistance is wished.

Necessarily the Territory must read its title clear to property before such plans can be satisfactorily consummated. Incidentally, will the establishment of an agricultural school in any way prove a departure from the intentions of those who entrusted the institutions to the Hawaiian Kingdom, whose successor is the Territory of Hawaii. There is this to be considered and there is also to be taken into consideration the uncertainty of rights essential to the establishment of an agricultural school connected with the Lahaialuna institution.

Today's conference of the Governor and the heads of departments named was brought about for the sole purpose of arriving at a definite conclusion, if possible, as to the best methods to pursue in the administration of this educational trust, what the rights, privileges and responsibilities of the Government are, the status of the Territory in the matter of lands and water rights and the relation of the provisions of the ancient missionary transfer to present plans concerning the school.

The BUSINESS MAN'S HANDY INDEX, published in the Saturday Bulletin and the Weekly Edition, gives a concise and complete resume of all legal notices, calls for tenders, judgments, building permits and real estate transactions. Evening Bulletin, 75 cents per month. Weekly Bulletin, \$1 per year.

### ALPINE CLIMBERS

(Continued from Page 1.)

On arriving at the little stone house near the summit known as Craigies, Mr. and Mrs. W. D. Lovell of Pala were found sitting near the fireplace. The house is roofless, gales having blown off the corrugated iron. A heavy roofing either of iron or cement would put the house in fairly good condition again. The appearances within the building plainly showed the merciless hands of vandals.

About midnight all walked up to the summit and viewed the crater by moonlight, after which the return was made to the cave below and the mountaineers slept on a bed of dried ferns for several hours. Dr. Armitage slept out in the open in order that his lungs might enjoy to their full capacity the rarified air in its purest state, unalloyed by contamination with either human exhalations or smoky atmosphere caused by the fire kept up to warm the cave.

Being weary and worn, the happy travelers laid down to rest and enjoyed sweet refreshing repose for several hours, free from the noise of civilization.

At 3:30 a. m. they rode to the summit to see the sunrise. The Pileas was at the zenith while Orion illumined the eastern heavens. The moon was in the western sky, while Jupiter was shining in its glorious splendor above the eastern horizon. The combined effect of the illuminations by these heavenly bodies was superb.

From 4:30 a. m. to 5:30 a. m. all eyes were fixed on the eastern horizon all being eager to catch a glimpse of the sun as it makes its appearance above the horizon.

### GRISELDA SONG RECITAL

Next Tuesday evening is the date set for Madame Griselida's song recital at Alexander Young Hotel. Tickets are now on sale at Wall, Nichols Co. and Bergstrom music store, the nominal price of \$1 each being asked.

The program will consist of many songs never heard in Honolulu on the concert stage; also of some which are familiar.

The artist will be accompanied by Mrs. W. J. Whitney.

In her concert tours Griselida has naturally been commented on by the press. The following extract is taken from the Calcutta Indian Daily News: "The music-loving portion of Calcutta society were on Saturday night permitted to participate in certainly one of the best concerts that has ever been given in the city. The concert created more than usual interest since it was the debut in Calcutta of the American songstress, Madame Agnes Fried Griselida, about whom we had heard so much and were anxious for a verification of the opinions of those who had already been privileged to hear her. It may be said at once that Madame Griselida has more than deserved all the encomiums that have been bestowed upon her by the musical critics both in her own country and in this.

She has a soprano voice of wide range, great power and dramatic quality with some wonderful high notes which she produces splendidly. Her voice is very true in intonation. Her first solo was the Cantabile from Saint Snon's "Samson et Dalilah," "mon coeur s'ouvre a ta voix," which Madame Griselida sang in English. The music is in the highest degree dramatic, and fully displayed her dramatic power and declamation. It was an artistic performance and it is not too much to say that every point was made and that every effect appealed with sincerity. Madame Griselida's interpretation was remarkable for vocal skill and artistic perception. It was received with manifestations of delight and in this as in all her songs the singer was recalled. Her greatest triumph, however, was in Luigi Arditi's Valze Brillante "Tetani," which she again sang with orchestra accompaniment and in which she was really superb. Her voice was sweeter and more flexible in this than in any other of her pieces and her treatment was passionate, yet restrained, expressive, and withal free from exaggeration and forcefulness. She was rapturously encored.

The audience was a distinctly smart one; in fact, it was the most fashionable audience that has assembled in the Town Hall for some time. Lady Curson and a large party from Government House, with the Lieutenant Governor and Mrs. Bourdillon, occupied the front seats and added greatly to the eclat of the evening.

The upper disk of the sun showed itself above the horizon at about 5:26 a. m. (Honolulu time) and at 5:33 a. m. it was wholly above the horizon. The sight was grand. An artist's brush can hardly do justice to the scene. The weather was fine and clear, there being no fog to obliterate the view. The clouds in the east added splendor to the panorama.

After exploring the summit of the crater for miles, besides viewing from the top the floor of the crater 2,500 feet below, with its numerous volcanic cones here and there, and miles upon miles of lava flows within the pit proper, the party returned to the little cave to make preparations for breakfast.

After 9 a. m. Messrs. W. Walsh of Puunono and Jas. Kirkland of Kahu-lui arrived and they were most welcome visitors. They immediately proceeded to the top. At 11 a. m. they returned and the homeward trip was commenced. Just at that time six objects were noticed approaching the summit from the direction of Koolau, all carrying guns. They were on foot and were most likely native boys going on a goat-hunting expedition inside the crater. Four other native

boys from Kula passed the cave where the Alpine climbers were and after exchanging words of welcome, they proceeded on their return journey to Kula by way of Polipoli. They were on horse and were all supplied with rifles.

At 11 a. m. the party left the cave on their homeward trip, and Kalama's residence was reached at 3 p. m. After a rest of two hours, during which the weary travelers were regaled with an excellent dinner by Hon. and Mrs. Kalama, they started for Wailuku in a surrey, reaching home at 8 p. m. The round trip to the crater and return was made in thirty-seven hours. The party was favored with fine weather, and enjoyed their trip immensely.

This is conceded as the best time to make the ascent of Haleakala. Besides fine weather during the day, the nights are warm, the thermometer rarely registering below 55 degrees at 4 a. m. The low-hanging clouds are quite numerous but are soon blown away by the gentle breezes from the ocean at the approach of the King of Day. A trip to Nuuanu pali is more hazardous than a trip to Haleakala. The force winds at the Pali are entirely absent at the crater.

## Willcox & Gibbs is the Only Automatic No Tension Silent Sewing Machine

STANDS PRE-EMINENT. It will be appreciated by those seeking the BEST.

### Pacific Hardware Company, Limited.

SOLE AGENTS.

Sample of China and Glassware moved downstairs—HOUSEHOLD DEPARTMENT—for the convenience of customers.

## Important Announcement of our Sale of Fine Silks

We have been preparing for this sale for many weeks; now it is ready to begin Thursday morning, September 1st, at 8 o'clock.

It will make the early part of September, days long to be remembered among wearers of desirable silks.

Prices are such as will keep a continual stream of buyers at the silk counter.

Plain Japanese Silk, 50 pieces, different shades, .....	at 25c
Colored Taffetas, 75c qualities, .....	at 25c
Colored Taffetas, \$1.00 qualities, .....	at 35c
One lot of figured, striped, and dotted Foulard silks, regular \$1.50, \$1.25, and \$1.00 qualities, .....	at 25c
Plain Surrah silks, \$1.00 quality, .....	at 25c
Peau de Crepe and Foulard Illusions, \$1.25 and \$1.00 qualities during sale, .....	at 75c a yard
White Taffetas, 75c qualities, .....	at 55c
White Taffetas, \$1.00 qualities, .....	at 75c
Colored Surrah silks, regular 90c, .....	at 50c
Black Taffeta, width 36 inches, .....	at \$1.25
Black extra fine Swiss Taffeta, .....	2.25 quality at 1.50
Black "Sterling" guaranteed Taffeta, .....	1.50 .. at 1.10
Black Moire Silk, .....	1.50 .. at 1.00
Black .. ..	2.00 .. at 1.25
Black Armure Silk, .....	1.50 .. at 1.10
Black .. ..	2.00 .. at 1.50
Black Peau de Seie, .....	1.25 .. at 1.00
Black .. ..	1.50 .. at 1.10
Black .. ..	2.00 .. at 1.50
Black Peau de Cygne, width 20 inches, .....	1.50 .. at 1.10
Black Peau de Cygne, width 26 inches, .....	1.50 .. at 1.10
Black Gros Grain Silk, .....	1.50 .. at 1.25
Black Gros Grain Silk, .....	2.00 .. at 1.50
Black Brocaded Silks, .....	2.00 .. at 1.50
Black Brocaded Gros Grain, double width, .....	4.00 .. at 2.25
Black Brocaded Satins, single width, .....	3.00 .. at 2.00
Black Brocaded Satins, single width, .....	1.25 .. at .50
Black Brocaded Moire, single width, .....	1.50 .. at .75
Black Dotted Crepe de Chine, heavy, .....	2.50 .. at 1.50
Cream dotted Crepe de Chine, heavy, .....	2.50 .. at 1.50
Black striped Grenadines, double width, .....	1.50 .. at .75
Black striped Grenadines, double width, .....	2.50 .. at 1.25
Black Grenadines, white figures or dots, .....	3.50 .. at 2.00
Black Grenadines, white figures or dots, .....	5.00 .. at 2.50
White Grenadines, black figures or dots, .....	3.50 .. at 2.00
One lot of fancy silk reduced to, .....	25c a yard
Colored silk plush, .....	\$1.50 .. at \$1.00

## EHLERS, FORT STREET

### DON'T BLOW Your Money!

on home decorations that will not be in harmony with your artistic sense.

We offer our advice and experience in helping you to select Wall Papers and Paint that will make any room just what it ought to be.

### S. STEPHENSON

Practical Decorator

Phone 426 137 KING ST.

S. S. Signs blow money your way!

### INVEST YOUR SAVINGS

Where it will earn

## 9 per cent

with safety GUARANTEED.

For particulars apply

### PHOENIX SAVINGS, BUILDING AND LOAN ASSOCIATION.

Judd Building, Honolulu.

GUARANTEED CAPITAL \$200,000.00.

PAID UP CAPITAL, \$1,300,000.00.

HENRY E. COCKE, Cashier.

### Artistic Signs

And Satisfaction Guaranteed when made by

### JEWETT,

CORNER HOTEL and UNION.

THIS or any design you may suggest furnished in Granite, Hawaiian Stone, Marble, White Bronze or Real Bronze.

Call or Write No. 1048 ALAKEA STREET HONOLULU P. O. BOX 642 PHONE BLUE 1801



J. C. AXTELL Alakea St., bet. King and Hotel Sts.



For a Quick Meal

The best thing yet discovered is Heinz Baked Beans. Be sure its Heinz. Has three times the nutriment of beef and is a "meal in a minute."

Your grocer has a fresh supply which just arrived. H. HACKFELD & CO., Ltd. Agents.

Berkshire Typewriter Paper.

This line of papers is manufactured expressly for typewriter use and combines all the qualities essential to good work, viz: Strength, Durability and Fineness of Texture. A large variety to meet all requirements in quality and price. Sample book sent free on request.

HAWAIIAN NEWS CO., Ltd. Two Stores Young Blidin. Merchant St.

Boarding and Livery

Also very fine pasturage near town. Horses taken and returned without charge.

CLUB STABLES, LTD. FORT, above HOTEL STREET Phone Main 109

LEATHER GOODS, MATCH BOXES, POCKET MIRRORS, THERMOMETERS, CORKSCREWS, RULERS and SCHOOL SUPPLIES; PREMIUMS of every description, at the LOWEST PRICES. Also a fine line of ALUMINUM GOODS. Up-to-Date BUSINESS Men use our goods to advertise their and please customers. Write us if in need of anything.

THE SAULNIER MFG. CO. 650 MELROSE Ave. NEW YORK, N. Y. HONOLULU IRON WORKS

Improved and Modern SUGAR MACHINERY of every capacity and description made to order. Boiler work and RIVETED PIPES for irrigation purposes a specialty. Particular attention paid to JOB WORK, and repairs executed at shortest notice.

Weekly Edition of the Bulletin, \$1 per year.

Just What the Doctor Ordered

The wonderful tonic properties of pure hops combined with absolute purity makes

Primo Lager

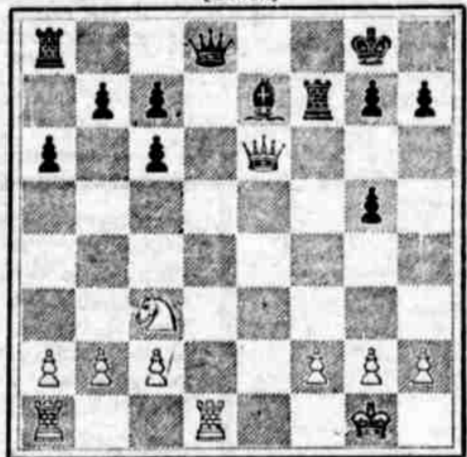
the best tonic for mind and body



THE CHESS GAME BY WIRELESS

HONOLULU vs. HILO

Position in Game A (Ruy Lopez). [BLACK]



- White. Honolulu. 1. P-K4, 2. Kt-KB3, 3. B-Kt5, 4. B-R4, 5. Castles, 6. P-Q4, 7. P-K5, 8. Kt x P (Q4), 9. R-Ksq, 10. B x Kt, 11. Kt Q B3, 12. Kt-B4, 13. Q-Kt4, 14. P-K4, 15. B x Kt, 16. Q x H, 17. Q-K6 ch, 18. QR-Q1. Black. Hilo. 1. P-K4, 2. Kt-QB3, 3. P-QR3, 4. Kt-B3, 5. B-K2, 6. P x P, 7. Kt-K5, 8. Castles, 9. Kt-B4, 10. Q P x B, 11. Kt-K3, 12. P-K B3, 13. Kt-Kt4, 14. B x P, 15. B x Kt, 16. P x B, 17. R-B2.

Maui Is Making GREAT PLANS FOR Governor's Visit

[Special to The Bulletin.] Wailuku, Maui, Aug. 29.—The Executive Committee of the Wailuku Republican Precinct Club met today and the following reception committee was appointed to wait upon Governor G. R. Carter when he gets to Wailuku on his proposed tour around Maui.

The committee consists of A. N. Kapaikai, H. A. Wadsworth, John Kealoha and C. B. Wells. The reception committee of thirteen appointed by chairman of the Wailuku Improvement Association, has been invited by the precinct club reception committee to join with them in extending welcome to Governor Carter, who is expected at Lahaina Tuesday, September 6, from Honolulu. The Governor and party will spend Wednesday at Lahaina. On the following day the Governor will come to Wailuku, by way of Honouliuli, Honokohau, Kahakulua and Wahee, arriving in Wailuku Friday evening, September 9.

On the following day (Saturday) an open air reception will be extended to the Governor and his party at Manager C. B. Wells' residence, where the Governor will meet the residents of Wailuku, Wahee and Waikapu, and listen to their petitions. A grand luau will be extended to the Governor on his return from Hana via Haleakala crater. The proposed luau will likely be held at Iao Valley on Sunday, September 25. The luau will be under the supervision of both the Wailuku and Kahakulua and Punene precinct clubs. The trip of the Governor around

Maui will be marked with a succession of lunas and speech-making. And when the Chief Executive shakes off Maui dust he will carry with him affectionate remembrances of hospitality bestowed by Maui citizens. Speech-making will take the place of the old time honored hulas with which royal visitors were entertained in bygone days, but the absence of this ancient custom will in no wise lessen the joyous moods of those who will partake in these festivities.

POLICE COURT NEWS

In the Police Court this morning the cases of Ramona Lopez, a Porto Rican woman charged with larceny in the second degree; and of August Guerrero, a young Portuguese, charged with assault and battery on a Chinese named Ah Chin, were continued until tomorrow.

Archie Manint, charged with profanity, was reprimanded and discharged. The case of Kayano, charged with embezzlement, was continued for a week at the request of Attorney S. F. Chillingworth, who conducted the case of the prosecution. Kayano is alleged to have converted to his own benefit a sum of money which was paid to a hui of laborers, to which he belonged, for certain work performed by them at Kaimuki.

The case of Manuel Lopez, a Porto Rican, charged with vagrancy, was nolite pro'd.

Tomson—The doctor said I could have one glass of beer a day. Jonson—And you are obeying orders? Tomson—Yes. But I'm five weeks ahead on my allowance.—Kansas City Journal.

The Evening Bulletin, 75 cents month.

Chains and FOBS

We have a wide range of novel creations and beautiful designs in chains and fobs. The workmanship is of the very best, the designs unique and the wearing qualities excellent.

Come in and look them over, even though you do not intend to purchase.

M. R. COUNTER, 1142 Fort Street.

LOCAL AND GENERAL

If greatly troubled with mosquitoes notify the Board of Health.

Read "Wants" on page 4. J. O. Sorrao, returns to Hilo today. Wizard golf balls, 30 cts, Wall-Nashols.

F. M. Hatch and son returned this morning from Hawaii.

Gom Paul is dead but Paul Jones still lives—at the Pantheon.

There will be no meeting of the Board of Health tomorrow.

Fresh pruns, 6 pounds for 25 cents. Gertz Bros., Phone White 3231.

Judge and Mrs. Matthewman, arrived in the Mauna Loa this morning from Hawaii.

Mura, an experienced cook, desires a position with private family. Apply 1095 Beretania.

Ask for "Old Kirk" whiskey at the Columbia, Pantheon, Favorite, Criterion and Fashion.

J. G. Rothwell returned in the Mauna Loa this morning from a business trip to Hawaii.

E. J. Moses, Jr., of Hilo, who has been on an extended trip in the East, returns in the Kinau today.

Pacific Import Co. will give you one dollar for 50 cents September 1st. Star Brand boys' shirts, 6 for \$3.

A sound, Hawaiian-bred horse for light delivery work, also light wagon or brake, are wanted. See ad, page 8.

The Territorial Messenger Service will take orders and reserve seats for "Said Pasha." Telephone Main 261.

The County Commission will not meet tonight on account of the absence of some of its members to attend the Hilo convention.

Do you want a new chain or fob? If so go to M. R. Counter's, 1142 Fort street, and have them show you their large assorted stock.

For exercise, recreation, health and sport go to the Horseshoe Saloon, Bowling alley free of charge. Hotel street, near Nuuanu.

Proposals for constructing a concrete arch culvert at Waiama gulch, South Hilo, Hawaii, are asked for by the Superintendent of Public Works.

Bids for construction of certain buildings at the insane asylum will be opened September 6th instead of September 5th, at the Public Works office.

September 1st Pacific Import Co. will start a bargain sale in Trenchon and Normandie lanes. You can buy all the laces that are on sale, 20,000 yards, at your own price.

The Friday Evening Social Club give their semi-monthly dance at the I. O. O. F. Hall Friday, September 2.

A full attendance of members is requested as the annual election of officers will take place.

A memorial service for the late Mrs. Alex. Macintosh will be held at St. Andrew's Cathedral tomorrow afternoon at 4 o'clock. Bishop Bestarick will deliver an address. All friends of the deceased are invited.

On the out-passage when the Kinau passed the line of the Moana Hotel, Proprietor Peacock, with halliards in hand, saluted the vessel and the departing conventioners with the hotel flag. Capt. Freeman responded with the customary steam salute of the steamer's siren in acknowledgment.

Officers of the steamer Mauna Loa, which arrived from Maui, Kona and Kau ports this morning, report that on the leeward Hawaii districts the same intense heat which has been noticeable in this city, has been felt even in a still more marked degree. It is reported that at Mr. Buchholtz's place near Hoopuloa, in South Kona, the thermometer the other day registered 95 degrees.

All the singers who are to present Said Pasha on Regatta Day evening will assemble at Hawaiian Opera House this evening for rehearsal. This will be the first rehearsal in the Opera House and will give the singers a chance to gauge their voices so as to be easily heard in all parts of the big building. Patronesses are the only listeners who are privileged to be present. It has been decided to auction the logs and boxes to the highest bidder. Harry Armitage has the auction in charge and there will be an upset figure of the regular price of the seats.

Baseball Broke Batsman's Rib

A deplorable accident happened at the baseball game played at Kapiolani Park last Sunday between the W... Steamship Company team and the "Wharf Rats." Henry Moeline, the first assistant engineer of the steamer Claudine, who plays a famous first base for the seafarers, under the euphonious pet-name "Uni", was at the bat waiting to make a mighty swipe. For some reason or other his mind for a moment wandered far off to the briny ocean and he failed to notice the ball which Freitas, the Wharf Rat pitcher, hurled against him with tremendous force. The ball caught "Uni" in the ribs, breaking one of them. He is now undergoing repairs. "Dolly Gray", the famous pitcher for the Wilder team, is reported to have retired on his laurels.

Benevolent Old Body—And what are your plans when you come out of prison? Burglar Bill—Well, sir, I've got the plans of two coolers and a postoffice by way of a start.—New Yorker.

Job Printing at the Bulletin press.

In Shoes

What Do You Want?

On the Outside—"Looks" On the Inside—"COMFORT" Throughout All—"Wear" And After That—"Price"

Well, if that's what you're really looking for then you cannot come to our store too quickly. It's where you belong.

McINERNEY SHOE STORE. FORT STREET

BISHOP & CO., BANKERS.

Established in 1868.

BANKING DEPARTMENT. Transact business in all departments of Banking.

Collections carefully attended to. Exchange bought and sold. Commercial and Travelers' Letters of Credit issued on the Bank of California and N. M. Rothschild & Sons, London.

Correspondents—The Bank of California, Commercial Banking Co. of Sydney, Ltd., London.

Drafts and cable transfers on China and Japan through the Hongkong & Shanghai Banking Corporation and Chartered Bank of India, Australia and China.

Interest allowed on term deposits at the following rates per annum, viz: Seven days' notice, at 2 per cent. Three months, at 3 per cent. Six months, at 3 1/2 per cent. Twelve months, at 4 per cent.

TRUST DEPARTMENT. Act as Trustees under mortgages. Manage estates (real and personal). Collect rents and dividends. Valuable papers, Wills, Bonds, etc. received for safe-keeping.

ACCOUNTANT DEPARTMENT. Auditors for Corporations and Private Firms.

Books examined and reported on. Statements of Affairs prepared. Trustees on Bankrupt or Insolvent Estates.

OFFICE, 924 BETHEL ST. SAVINGS DEPARTMENT. Deposits received and interest at 4 1/2 per cent. per annum, in accordance with Rules and Regulations, copies of which may be obtained on application.

INSURANCE DEPARTMENT. Agents for Fire, Marine, Life, Accident and Employers' Liability Insurance Companies. Insurance Office, 924 Bethel St.

Claus Spreckels. Wm. G. Irwin.

Claus Spreckels & Co. BANKERS.

HONOLULU, I. I. : T. H.

San Francisco Agents—The Nevada National Bank of San Francisco. Draw Exchange on the Nevada National Bank of San Francisco.

London—The Union of London and Smith's Bank, Ltd.

New York—American Exchange National Bank.

Chicago—Corn Exchange National Bank.

Paris—Credit Lyonnais.

Hongkong and Yokohama—Hongkong-Shanghai Banking Corporation.

New Zealand and Australia—Bank of New Zealand and Bank of Australasia.

Victoria and Vancouver—Bank of British North America.

Deposits received. Loans made on approved security. Commercial and Travelers' Credits issued. Bills of Exchange bought and sold. Collections Promptly Accounted For.

The First AMERICAN SAVINGS AND TRUST CO.

OF HAWAII, LTD.

CAPITAL, \$200,000 — 50% PAID IN.

President..... Cecil Brown Vice President..... M. P. Robinson Cashier..... W. G. Cooper

Office: Corner Fort and King Sts. SAVINGS DEPOSITS received and interest allowed for yearly deposits at the rate of 4 1/2 per cent. per annum. Rules and regulations furnished upon application.

YES!

BUY FROM US—WHY? Because we are the cheapest, call for your orders, allow you 45 days in which to pay your bills, deliver promptly. You make 5% on every dollar you invest. KALIHU STORE, White 3161.

HONOLULU STOCK EXCHANGE

HONOLULU, Aug. 30, 1904.

Table with columns: NAME OF STOCK, Capital Paid Up, Bid, Ask. Includes Mercantile, Bonds, and Miscellaneous sections.

Latest sugar quotation 4.255 cents.

ORPHEUM THEATRE.

TONIGHT THE WONDER WORKER

ZAMLOCH

ACKNOWLEDGED GREATEST LIVING MAGICIAN OF THE AGE.

CHANGE OF BILL EACH EVENING. POPULAR PRICES.

TICKETS ON SALE AT THE BERGSTROM MUSIC CO., NEW STORE.

The Yokohama Specie Bank, Ltd.

ESTABLISHED 1880.

Capital Subscribed..... Yen 24,000,000 Capital Paid Up..... Yen 18,000,000 Reserved Fund..... Yen 9,320,000

HEAD OFFICE, YOKOHAMA.

BRANCHES—Bombay, Hongkong, Honolulu, Kobe, London, Lyons, Nagasaki, Newchwang, New York, Peking, San Francisco, Shanghai, Tientsin, Tokio.

The bank buys and receives for collection Bills of Exchange, issues Drafts and Letters of Credit and transacts a general banking business.

HONOLULU BRANCH, 67 KING ST.



LOWNEY'S CHOCOLATES FRESH TODAY

Sole Agents for Hawaiian Islands. Latest Ideas—Fudge, Molasses Brittle, St. Louis Exposition, Gofers.

LEWIS & CO, LTD.,

169 KING STREET. 240—2 Telephones—240

M. Phillips & Co.

Wholesale Importers and Jobbers. EUROPEAN AND AMERICAN DRY GOODS. Fort and Queen Sts.

SODAS

Best in the city. Cool and Refreshing.

Hawaiian Soda Works

Telephone Blue 1871.

\$50.00 for \$1.00

AT THE Ladysmith Shooting Gallery, TOP OF PUNCHBOWL. CASH PRIZE OF \$50

Buy a Piano

It doesn't take ready money. Any one can buy a first-class piano from us on the easy payment plan. Also Talking Machines, Organs, etc.

BERGSTROM MUSIC CO., LTD.

ALWAYS ON SALE

Art Goods

Every day in the week; no let-up. A large and varied assortment of Art Goods is always on hand; you will be well paid to look at our line in this direction, for a more complete array of novelties of this class cannot be found in Honolulu.

FANCY CENTERPIECES, TEA CLOTHS, PILLOW TOPS, LAUNDRY BAGS, DOLLIES, TABLE COVERS, BUREAU SCARFS, TRAY CLOTHS, TURKISH COVERS, PILLOW SHAMS.

Point Lace, Honiton, and Battenburg Braids, Linen Thread, Collar, Yokes, Baby Bonnets, Stoles, and Stocks; PATTERNS FOR SAME.

A Full Line of Carlson & Currier Embroidery Silk. Embroidery Rings, Mercerized Embroidery Thread, assorted shades. Linen Floss, WOOLS—Germantown, Suetland Wool, Saxony, Shetland Floss, and Split Zephyr; all shades.

Assortment of Beads; stamping done at short notice.

WE ARE SOLE AGENTS OF McCALL PATTERNS.

E. W. JORDAN & CO., LTD.,

"No. 10 Store," Fort St.

# EVERYDAY WANTS AND BUSINESS DIRECTORY

HAWAII'S GREATEST OPPORTUNITY FOR LARGE RETURNS ON SMALL INVESTMENTS

For every dollar a man wins on fast horses he loses two on slow ones.  
**THE LIVE ADVERTISER WINS ALL THE TIME.**

**RATES FOR WANT ADS.**

Ads in this column will be inserted  
For line, one insertion ...15c  
For line, two insertions ...25c  
For line, one week .....30c  
For line, two weeks .....40c  
For line, one month .....60c  
This is the cheapest advertising ever offered the people of Honolulu.

## WANTS

See Page 8, NEW TO-DAY, for New Ads.

**SITUATIONS WANTED.**

An expert accountant, with several hours each day at his disposal, would like to take charge of one or more small sets of books, at reasonable charge. Address X., this office. 2841-tf

**SPECIAL NOTICES.**

**FOR SALE.**  
Have 5 Houses for sale at Palama; \$22 each; balance WITHOUT INTEREST at \$10.00 per month.  
P. E. R. STRAUCH,  
No. 74 S. KING ST. TEL. MAIN 306.

Wallace Jackson is now prepared to deliver small packages and to move furniture to any part of the city. Terms reasonable. Satisfaction guaranteed. Stand, Merchant and Alakea Streets, Telephone Main 343. Give me a trial.

H. L. White — Automobile, Bicycle, Typewriter, Cash Register, General Repairing, Merchant and Alakea.

**WANTED**

Young woman for office work; one capable of keeping small set of books and who is a fair stenographer; state salary wanted. Address X. N., Bulletin. 2854-1w

A sound gentle work-horse, weight about 1200 lbs., for use in dump cart. Apply Dr. Sloggett, Superintendent Insane Asylum. 2855-1w

A white lady desires a position to take care of children and do light housework. Address A., Bulletin. 2852-1w

A position as collector or office work. Address B., Bulletin. 2855-1w

Two or three good solicitors. Address K., Bulletin office. 2816-tf

A half-grown goat. Address A. D. S., Bulletin. 2853-1w

**TO LET.**

A 4-room cottage with bathroom, stationary bath tub, water closet and washstand on Artesian St.; \$20 per month. Apply P. McInerney, 1130 Fort St. 2833-tf

Cottage on Vineyard St.; parlor, 2 bedrooms, dining room, kitchen, pantry, and bath; sewer connections. 352 Vineyard St. 2848-tf

Blank books of all sorts, ledgers, etc., manufactured by the Bulletin Publishing Company.

### Champ Clark Ready To Cut Man's Throat

Louisville, Aug. 13.—"I'll cut your throat from ear to ear if you say that to me outside of this tent," angrily exclaimed Champ Clark this afternoon when B. B. Perry of Winchester questioned a statement made by Clark in discussing former Governor W. S. Taylor of Kentucky at the New Albany Chautauqua.

Immediately there was confusion. Mr. Perry arose to his feet and some of the 5000 people who were present thought he was accepting Mr. Clark's challenge. Officers of the Chautauqua surrounded Mr. Perry, who some accuse of having a knife, but none was found on him. The audience howled and hissed by turns.

"Go on, Clark," yelled some one in the crowd.  
"You needn't have any uneasiness about my going on," exclaimed Mr. Clark. "I'm not going to be bluffed or bullied or hissed out of saying what I've got to say."

In the meantime Mr. Perry left the park and came to Louisville, and the incident was closed.

It happened during the joint debate between Champ Clark of Missouri, Democrat, and Charles B. Landis of Indiana.

At the conclusion of Mr. Landis' speech Mr. Clark said:  
"Bill Taylor richly deserves to be hanged. Get him back to Kentucky and hang him." This started Mr. Perry.

**THE BUSINESS MAN'S HANDY INDEX**, published in the Saturday Bulletin and the Weekly Edition, gives a concise and complete resume of all legal notices, calls for tenders, judgments, building permits and real estate transactions. Evening Bulletin, 75 cents per month. Weekly Bulletin, \$1. per year.

**PARTNER WANTED.**

**TO LET.**  
Six stores in the Kapiolani Building, size 18 x 40 with cellar will be rented at \$30 a month each. Kapiolani Estate Ltd. 2793-tf

Furnished Rooms.—Housekeeping allowed; cool and mosquito-proof. Alakea House, Alakea St. bet. Hotel and King. 2265-tf

Nicely furnished room; \$5; suitable for day sleeper. 734A Lunalilo lane, between Lunalilo and Kinau Sts. 2852-1w

2 modern 7-room houses on Kinau St., mosquito proof, electric lights, servants' quarters. Phone 1961 Blue. 2846-tf

Cottage on Makiki St. near Wilder Ave. formerly occupied by Mr. S. S. Peck. Enquire 1527 Makiki St. 2841-tf

Store on Alakea St. between Merchant and King. Apply J. W. Podmore, King and Bethel Sts. 2797-tf

4-room cottage, sanitary plumbing, on River St. Apply J. W. Podmore, King and Bethel. 2792-tf

At Halealea Lawn, cor. Richards and Hotel, nicely furnished rooms and cottages. 2834-1m

Newly furnished rooms, all modern conveniences. At No. 84 Vineyard St. 2728-tf

Wahala lots on easy terms. A. V. Gear, 122 King St. 2770-tf

Furnished rooms at 1223 Emma Street. Mrs. McConnell. 2563

**FOR SALE.**  
Blue corner lot in Makiki. Curbing, water, fruit and ornamental trees and all improvements. Two minutes' walk from cars and Punahou College. Address R. F., this office. 2516-tf

A second-hand National Cash Register in good condition. Address O., this office. 2854-1w

Black Minorca eggs, setting, \$1.50. Leave orders at City Feed Store. 2839-1m

Weekly Edition of the Bulletin, \$1 per year.

Fine Job Printing at the Bulletin office.

**Legal Notices.**

IN THE CIRCUIT COURT OF THE Second Circuit, Territory of Hawaii, At Chambers, in Probate, in the Matter of the Estate of Kelupaka (w), late of Hamakua, Deceased. On reading and filing the petition of Samuel Kaamoku, of Hamakua, alleging that Kelupaka (w) of Hamakua, died intestate at Hamakua, on the 21st day of July, A. D. 1904, leaving property in the Hawaiian Islands necessary to be administered upon, real estate situate at Pala, Maui, and praying that letters of administration issue to Isaac D. Iae, it is ordered that Wednesday, the 14th day of September, A. D. 1904, at 10 o'clock a. m., be and hereby is appointed for hearing said petition in the court room of this court at Wailuku, Maui, at which time and place all persons concerned may appear and show cause, if any they have, why said petition should not be granted.  
Dated at Wailuku, Maui, Aug. 6th, 1904.  
By order of the Court:  
EDMUND H. HART,  
Clerk of the Circuit Court of the 2nd Circuit.  
2838—Aug. 9, 16, 23, 30.

**Corporation Notices.**  
**QUARTERLY MEETING.**  
**UNION FEED COMPANY, LIMITED.**  
The regular Quarterly Meeting of the Stockholders of the Union Feed Company, Ltd., will be held at the office of the Company, Kakaako, on Wednesday, the 31st inst., at 2:30 p. m.  
**UNION FEED CO., LTD.**  
By H. R. MACFARLANE Jr., Secretary.  
Honolulu, August 29, 1904.  
2855-2t

**Legal Notices.**

**FOR SALE** cards at Bulletin office

## For Love of Country

By CYRUS TOWNSEND BRADY,

Author of "The Grip of Honor," "The Southerner," "Sir Henry Morgan, Buccaneer," "A Doctor of Philosophy," Etc.

Copyright, 1898, by CHARLES SCRIBNER'S SONS

"Goodby, Mr. Seymour!" cried Bentley, waving his hand and setting his back against the rail nearest to the Yarmouth, which had slowly swung parallel to the Randolph and had been lashed there. The old man was covered with blood from two or three wounds, but still undaunted. Two or three men made a rush at him, but he held them at bay, no man caring to come within sweep of that mighty arm which had already done so much, when a bullet from above struck him, and he fell over backward on the rail mortally wounded.

Seymour raised his remaining pistol and fired it at the second man, who had nearly reached the foreyard arm. Less successful this time, he missed the man, who threw his grenade down the hatchway. Seymour fainted from loss of blood.

"Back, men! Back to the ship, all you Yarmouths!" cried Captain Vincent as he saw the lighted grenade, which exploded and ignited a little heap of cartridges left by a dead powder boy before the magazine. Alas! There was no one there to check or stop the flames. The English sailors sprang back and up the sides and through the ports of their ship with frantic haste. The lashings were being rapidly cut by them and the braces handled.

"Come aboard, men, while you can!" cried Captain Vincent to the Americans. "Your ship's afloat! You can do no more; you'll blow up in a moment!" The little handful of Americans were left alone on their ship. The only officer still standing lifted his sword and shook it impotently at the Yarmouth in reply; the rest did not stir. The smoke of battle had now settled away, and the whole ghastly scene was revealed. A woman's cry rang out fraught with agony, "Seymour, Seymour!" and again was her cry unheeded; her lover could not hear. She cried again, and then, with a frightful roar and crash, the Randolph blew up.

"A sail coming down fast—the little brig, sir," reported the officer of the deck to Captain Vincent. "Shall we come about and give him a broadside?"  
"No, no; we dare not handle the braces yet—until the gear and spars have been well overhauled."

"Shall we use the stern chasers then, sir?"  
The Yarmouth had left the scene of the explosion some distance away by this time, but she was still within easy gunshot. Captain Vincent earnestly examined the brig. As he looked she came up to the wind, hove to, and dropped a boat in the water. There was a bit of spar still floating there. The captain saw that three or four men were clinging to it.

"No; she's on an errand of mercy. There are men in the water on that topmast there. Let her go free," he said generously. "We've done enough today to satisfy any reasonable man."  
The colonel grasped his hand warmly and thanked him. The little brig picked up her boat, swung her main yard and filled away again on the port tack in the wake of the rest of the little squadron, now far ahead. Then understanding the forbearance of the big ship, she fired a gun to leeward and dipped her ensign in salute.

The force of the explosion had thrown Seymour from his advantageous position aft far into the water and away from the sinking ship. The contact with cold water recalled him to his senses at once, and, with the natural instinct of man for life, he struck out as well as he might, considering his broken leg and wounded arm and weakened state. There was a piece of a mast with the top still on it floating near by. He struggled gallantly to make it. "Was no use; he could do no more; closing his eyes, he sank down in the dark water. But help was near. A hand grasped him by his long hair and drew him up. One of his men, unwounded fortunately, had saved him. The two men presently reached the bit of wreck. The sailor scrambled up on it and by a great effort drew his captain by his side. Two more men swam over desperately and finally joined the little group. They clung there helpless, hopeless, despairing, fascinated, watching the remains of the Randolph disappear, marking a few feeble swimmers here and there struggling till all was still. Then they turned their eyes upon their late antagonist, joining away before the wind in flames. They saw her fight them down successfully. Appalled, none spoke. Presently one of the seamen glanced

the other way and saw the little brig swiftly bearing down upon them.  
"God be praised! Here's the brig, the Fair American," he cried. "We shall be saved—saved!"  
The brig was handled smartly. She came to the wind, backed the main top-sail and lay gently tossing to and fro on the long swells. The young captain stood on the rail, clinging to the back stays, anxiously watching. The boat was dropped into the water and with long strokes shot over to them. The men sprang aboard. Rude hands grappled and tenderly lifted the wounded captain in. They pulled rapidly back to the brig. The falls were muffled and the boat was run up, the yard swung, and she filled away. Seymour was lifted down. Philip received him in his arms.

"I ought to arrest you for disobedience of orders," said the captain sternly. "Why did you pay no attention to



They clung there helpless.

my signals? You have jeopardized the brig. You ship can blow you out of the water; you are quite within range."

But they soon saw that no motion was made by the ship, and in accordance with Seymour's orders the gun was fired and the colors dipped—a salute which the ship promptly returned.  
"I ought to put you under arrest, Philip," again said Seymour faintly, while he was lying in the tiny cabin, having his wounds dressed, "but I will not. 'Twas gallantly done, but obey orders first hereafter—'tis the first principle of action on the sea." That was rather cool comfort for the young officer, considering that his somewhat reckless action had just saved Seymour's life. He made brief reply, however, and then resumed his station on the deck of his little vessel, which was rapidly overhauling the rest of the fleet. As soon as the night fell, the wind, permitting, they were by Seymour's direction headed for the harbor of Charleston once more.

(Continued Tomorrow.)

**DEATH OF MRS. REED.**

Hilo, Aug. 25.—Mrs. W. H. Reed, a hamaaina of Hilo, died at her residence on Waiuanue street after an illness covering several months and was buried from Haili Church Monday afternoon. Mrs. Reed had been able to walk about the house up to three weeks ago but at that time her illness became so painful that she refrained from leaving her bed and on Sunday morning she died.

Haili Church was a mass of floral decorations when the funeral cortege entered. There was an enormous bunch of lilies in the center of the chancel and banks of roses on either side. Evergreens were artistically placed and around the choir rail delicate flowers were entwined. More artistic decorations had not been seen in Hilo for years.

The services were conducted by Rev. E. L. Desha and Rev. Curtis E. Shields.

Junior Partner—I suppose we had better say in our "ad" that we want a man of experience. Senior Partner—No; advertise for a man without experience, then we can teach him something.—Puck.



Mrs. L. C. Glover, Vice-President Milwaukee, Wis., Business Woman's Association, is another one of the million women who have been restored to health by using Lydia E. Pinkham's Vegetable Compound.

"DEAR MRS. PINKHAM:—I was married for several years and no children blessed my home. The doctor said I had a complication of female troubles and I could not have any children unless I could be cured. He tried to cure me, but after experimenting for several months, my husband became disgusted, and one night when we noticed the testimonial of a woman who had been cured of similar trouble through the use of Lydia E. Pinkham's Vegetable Compound, he went out and bought a bottle for me. I used your medicine for three and one-half months, improving steadily in health, and in twenty-two months a child came. I cannot fully express the joy and thankfulness that is in my heart. Our home is a different place now, as we have something to live for, and all the credit is due to Lydia E. Pinkham's Vegetable Compound. Yours very sincerely, Mrs. L. C. GLOVER, 614 Grove St., Milwaukee, Wis." Vice President, Milwaukee Business Woman's Association.—\$5000 Reward if anyone writes proving genuineness cannot be proved.

**NEED NAVAL OFFICERS.**

St. Petersburg, Aug. 18.—Grand Duke Cyril has returned here from Coburg. He will accompany Vice Admiral Rojestvensky, commander of the Baltic Fleet, to the Far East.

Vice Admiral Rojestvensky today announced his flag and staff appointments. Captain Clapter de Colong is made chief of staff.

The demand for naval officers is so pressing that all of the officers detailed for duty at the naval college have been ordered on active service and the college has been closed.

The mobilization of the reserve troops in five of the seven districts of the province of St. Petersburg has been completed and the mobilization of those of the Russian capital itself is expected to be announced in a few days.

Probably 30,000 men will be taken out of the population and called to the colors. Many factory and mill hands will be included, but the effect industrially will be lessened because most of the manufactories are all running on short time.

**JAPAN'S NEUTRALITY DEMAND.**

Paris, Aug. 18.—The news that Japan has practically sent an ultimatum to China concerning the enforcement of her neutrality in the case of the protected cruiser Askold and the torpedo boat destroyer Grozovoi causes surprise, but no alarm, here, the impression prevailing that China will be only too willing to carry out her neutrality obligations, especially when such a course favors Japan. Well informed circles consider that China's refusal to comply with the Japanese demands is most improbable, unless, under strong pressure by foreign Consuls, but it is not denied that China's refusal, followed by violent action on Japan's part, would entail serious complications.

**ONE SHARE ONE DOLLAR PER MONTH.**

The Twenty-ninth Series of Stock in the Pioneer Building & Loan Association will be issued in July, 1904, and is now open for subscription. The membership fee of fifty cents per share, and the monthly dues are one dollar per month per share. The stock draws much better interest than a savings bank.

Further information can be obtained from  
A. V. GEAR, Secretary,  
122 King St.

**K. OF P. LEADER.**

Louisville, Ky., Aug. 18.—Charles E. Shively, of Richmond, Indiana, was today chosen Supreme Chancellor of the Knights of Pythias, succeeding Tracy R. Banks, of North Dakota.

Blank books of all sorts, ledgers, etc., manufactured by the Bulletin Publishing Company.

## BUSINESS DIRECTORY

<b>BALLASTING.</b> Hawaiian-Japanese Ballasting Co. — Best black sand from \$3 to \$3 a load according to distance hauled. Coral rocks for stable, roads and sidewalks. Third door below King, Maunakea St.; P. O. box 830. Telephone Main 396.	<b>MESSAGE.</b> S. Ochiai, removed to Beretania St. near Maunakea. 2851
<b>CLEANING AND DYEING.</b> T. Hayashi—Clothes cleaned, repaired and dyed. 537 Beretania St.	<b>MESSENGERS.</b> Territorial Messenger Service—Union St. near Hotel; Tel. 361 Main.
<b>EXPRESS.</b> Moana Express, 910 Alakea St.; Tel. 511 Blue; good service; moderate rates. 2855-tf	<b>MUSIC.</b> If you are in need of a first-class pianoforte or organ tuner or repairer leave orders for Mr. Jas. Sheridan at 1168 Miller St. or at Hawn. News Co., Young Bldg. MRS. ANNA S. TUCKER, VOCAL STUDIO. High School grounds, Emma Street.

**Pommery & Greno's Champagnes.**  
Emperador Sherry  
Acme Rye Whiskey  
Canadian Club Whiskey. [Whiskies.  
O.V.G. Special Reserve and the Very Finest Scotch  
Commendador Port.  
King William IV. V.O.P Scotch Whiskey  
Siegert's Angostura Bitters

Brandies of Marie Brizard & Koger and James Hennessy & Co.  
Eagle Cherries in Maraschino.  
Special Selected Highland Whiskey "Whyte & Mackay's."  
Table Water, "White Rock"

Buchanan's "Black and White" Whiskey.  
Rums, some of Jamaica's Finest Productions.  
A.B.C. Bohemian Beer,  
Natoma Brandy,  
Duffy's Malt Whiskey.  
Sparkling Hock and Moselle Wines.

Are on sale in all first-class Hotels and Bars.

**Legal Notices.**

**Business Notices.**

**NOTICE.**

Messrs. Wong Chow, Wong Chew Yau, Lam Kai Chow and Lam Ying Chin have sold their interests in the firm of Yee Wo Chan Co., doing business on Kaunakea street, Honolulu, to the following:  
Wong Chow, Lam Ying Wai alias Lam Pin, Wong Hoy Wal, Wong Hoy See, Wong Wing Yew, Lam Pak Kam, Lam Kai and Lam Sing.  
2854-3t

**REMOVAL NOTICE.**

The TOWNSEND UNDERTAKING CO. and HONOLULU MUTUAL BURIAL ASSN. have moved next door to the more commodious quarters formerly occupied by Pacific Vehicle & Supply Co. Roomy office and parlors are nicely and comfortably arranged.

**THE HAWAIIAN REALTY AND MATURITY CO., LTD.**

Real Estate Mortgage Loans and Investment Securities. Homes Built on the Installment Plan.  
Home Office: McIntyre Bldg., Honolulu, T. H.  
L. K. KENTWELL, Gen'l Mgr.

**BOWEN'S MERCHANT PATROL AND CONFIDENTIAL AGENCY.**

Competent watchmen furnished for business houses and residences.  
Office, Room 8, Model Block.  
P. O. Box 284.

**NOTICE.**

E. S. Dunbar will not be responsible for any debts contracted in his name by other persons. 2855-3t

**THE OREGON RESTAURANT.**

At No. 9 King St. near Nuuanu, serves the best meal in town for 25 cents. Specialties as follows: Fruit in season with breakfast, salads and home-made bread with lunch, and ice cream every day with dinner.  
2842-1m W. A. CHUNG, Prop.

**TO VIOLET LOVERS.**

Beautiful fresh Mountain Violets, long-stemmed and very fragrant, for sale at reasonable prices at the corner of Hotel and Fort streets, Saturday and Tuesday afternoons. 2856-tf

"For Rent" cards on sale at The Bulletin office.

BY AUTHORITY.

PROCLAMATION.

Whereas, The Act to provide a Government for the Territory of Hawaii provides that a general election shall be held on the Tuesday next after the first Monday in November, A. D. 1904, and that at least forty days before any election, the Governor shall issue an election proclamation, and

Whereas, It is provided in the Rules and Regulations for Administering Oaths and Holding Elections that no change shall be made as to the boundaries of any precinct within sixty days of election.

Now, Therefore, In accordance therewith, I, George R. Carter, Governor of the Territory of Hawaii, hereby give notice that a general election for a Delegate to the House of Representatives of the United States to serve during the Fifty-ninth Congress, and for Senators and Representatives of the Legislature of the Territory of Hawaii, will be held on Tuesday, November 8th, A. D. 1904, throughout the Territory between the hours of 8 o'clock a.m. and 5 o'clock p.m.

The Senatorial Districts are as follows: FIRST DISTRICT—The Island of Hawaii; SECOND DISTRICT—The Islands of Maui, Molokai, Lanai and Kahoolawe; THIRD DISTRICT—The Island of Oahu; FOURTH DISTRICT—The Islands of Kauai and Niihau.

The electors in the said Senatorial Districts are entitled to elect Senators as follows:

- In the First District—two; In the Second District—two; In the Third District—three; In the Fourth District—one.

The Representative Districts, Registration Precincts and Polling Places are as follows:

FIRST DISTRICT.

Puna, Hilo and Hamakua, Island of Hawaii. FIRST PRECINCT—That portion of Puna lying south of Keauu and from the eastern boundary of Kan to the eastern boundary of Kamali, following that boundary to and along the western boundary of the Kaoho homesteads and a line the extension thereof to the boundary of Keauu.

Polling Place—Kalapana School House. SECOND PRECINCT—The lands of Keauu and Olaa.

Polling Place—Rond Board Stables; 1 1/2 miles Volcano Road. THIRD PRECINCT—That portion of Hilo lying between Puna and Ponahawai Street and Road and the line of its extension to the sea.

Polling Place—Davies & Co.'s Warehouse, corner of Waikeka and Kalepolepo Roads. FOURTH PRECINCT—That portion of Hilo lying between the Third Precinct and the Honohi Stream.

Polling Place—Circuit Court House at Hilo. FIFTH PRECINCT—That portion of Hilo lying between Honohi Stream and the land of Makahanaloa.

Polling Place—Papaikou School House. SIXTH PRECINCT—That portion of Hilo lying between the Fifth Precinct and the bed of the Waikamalo Gulch.

Polling Place—Honoumuli Court House. SEVENTH PRECINCT—That portion of the First Election District lying between the Sixth Precinct and the boundary of Hamakua, including the land of Huamala.

Polling Place—Laupahoehoe Court House. EIGHTH PRECINCT—That portion of the First Election District lying between the Seventh Precinct and the lands of Kalopa.

Polling Place—Kahe School House. NINTH PRECINCT—That portion of the First Election District lying between the Eighth Precinct and the bed of the Malanahae Gulch.

Polling Place—Honokaa Court House. TENTH PRECINCT—That portion of the First Election District lying between the Ninth Precinct and Kohala District.

Polling Place—Kukuihaele School House. ELEVENTH PRECINCT—The balance of Puna lying south of the Second Precinct and east of the First Precinct.

Polling Place—Kapoho Ranch Barn. SECOND DISTRICT.

Kohala, Kona and Kau, Island of Hawaii. FIRST PRECINCT—North Kohala.

Polling Place—Circuit Court House. SECOND PRECINCT—South Kohala.

Polling Place—Waimea Court House. THIRD PRECINCT—That portion of North Kona lying north of the northerly boundary of Houloua and a line running from the north corner of Houloua to the south corner of Puanahulu.

Polling Place—Circuit Court House at Kalua. FOURTH PRECINCT—That portion of the Second Election District bounded by the Third Precinct, Hamakua, Kau, the boundary of Keauu from Kau to Honanuu, the north boundary of Honanuu and the sea.

Polling Place—Konawaena School House. FIFTH PRECINCT—That portion of South Kona lying between Kea 2, and Ololemaoana 1.

Polling Place—Hookena Court House. SIXTH PRECINCT—That portion of South Kona lying between the Fifth Precinct and Kau.

Polling Place—Papa School House. SEVENTH PRECINCT—That portion of Kau lying between South Kona and Punaluu.

Polling Place—Waiohunu Court House. EIGHTH PRECINCT—The remainder of Kau.

Polling Place—Pahala School House. THIRD DISTRICT.

Islands of Maui, Molokai, Lanai and Kahoolawe. FIRST PRECINCT—That portion of Molokai consisting of Kalawao and Kalaupapa.

Polling Place—Kalaupapa Store House. SECOND PRECINCT—That portion of Molokai bounded on the east by Honouliuli and Halawa, and on the west by Kawela and the First Precinct.

Polling Place—Pukoo Court House. THIRD PRECINCT—That portion of West Maui lying between the lands of Waikapu in the District of Waialua and the lands of Honokawai in the District of Kaanapali.

Polling Place—Circuit Court House at Lahaina. FOURTH PRECINCT—That portion of West Maui lying between the lands of Hanakoo and Wahee, known as Kaanapali.

Polling Place—Honokahua School House. FIFTH PRECINCT—The Island of Lanai.

Polling Place—Kahalepalaoo Store House. SIXTH PRECINCT—That portion of the District of Waialua lying south of Waialua Stream and west of a line running from the mouth of Waialua Stream southerly along the sand hills to Maaiaca Bay and including the Island of Kahoolawe.

Polling Place—Circuit Court House at Waialua. SEVENTH PRECINCT—That portion of the District of Waialua bounded by the Sixth Precinct, the sea, the lands of Pulehulu, Kailua, Kailua, Hokuila and Hamakuaopoko and the sea.

Polling Place—Sugar Room at Punene Mill. EIGHTH PRECINCT—All that portion of Kula on East Maui lying west of a line running from Honouaia to the north boundary of Pulehulu on the line of the two hills, Pua o Kani and Pua o Kaha.

Polling Place—Hospital Building at Kihel. NINTH PRECINCT—The remainder of Kula and that portion of Hamakuaopoko lying southwest of the Maliko Gulch and mauka of the road running from Kulanui to the Makawao Jail and a line in extension thereof.

Polling Place—Kealahou School House. TENTH PRECINCT—The remainder of Hamakuaopoko and that portion of Hamakuaopoko lying west of the Halohaku Stream.

Polling Place—Hamakuaopoko Mill. ELEVENTH PRECINCT—That portion of East Maui lying between Halehaku and Opoula Streams.

Polling Place—Huelo School House. TWELFTH PRECINCT—That portion of East Maui lying between Opoula and Kaupaula Streams.

Polling Place—Keanae School House. THIRTEENTH PRECINCT—The District of Hana lying between the Districts of Koolau and Kipahulu.

Polling Place—Hana Court House. FOURTEENTH PRECINCT—The District of Kipahulu.

Polling Place—Kipahulu School House. FIFTEENTH PRECINCT—That portion of East Maui lying west of the District of Kaupo and south of Precincts Eight and Nine.

Polling Place—Honouliuli Court House. SIXTEENTH PRECINCT—The western portion of Molokai lying west of the Second Precinct and south of the First Precinct.

Polling Place—Kaunakakai School House. SEVENTEENTH PRECINCT—That portion of Molokai lying east of the Second Precinct.

Polling Place—Halea School House. EIGHTEENTH PRECINCT—That portion of the District of Waialua lying between the Waialua Stream and the Fourth Precinct.

Polling Place—Wahee School House. NINETEENTH PRECINCT—That portion of the District of Koolau lying between the Twelfth and Thirteenth Precincts.

Polling Place—Nahiku School House. TWENTIETH PRECINCT—That portion of East Maui known as the District of Kaupo.

Polling Place—Kaupo School House. FOURTH DISTRICT.

All that portion of the Island of Oahu lying east and south of Nuuanu Street and a line drawn in extension thereof from the Nuuanu Pali to Mokapu Point.

FIRST PRECINCT—All that portion of the said district lying south of King Street and the Waialae Road, and between a line drawn from the corner of King and Punahou Streets to the long bridge on Ala Moana (Beach Road) and Waialae Avenue on the eastern border of Kaimuki Tract and an extension thereof to the sea.

Polling Place—Near the foot of Punahou Street. SECOND PRECINCT—All that portion of said District bounded and described as follows:

Beginning at the junction of Sheridan Street and Ala Moana, and running along Sheridan Street, Piikoi Street extension and Piikoi Street to and along the westerly boundary of the Lunallilo Home premises to the south corner of the land of Kalawahine, along the eastern boundary of Kalawahine to its junction with the western edge of Manoa Valley, thence along the western edge of Manoa Valley to the junction of Manoa Road and Punahou Avenue; thence along Punahou Avenue to King Street and along the western boundary of the First Precinct to the sea.

Polling Place—Corner Koaemoku Street and Wilder Avenue. THIRD PRECINCT—All that portion of the said District bounded and described as follows:

Beginning at the old flagpole crest of Punchbowl running north-westerly to the junction of School and Emma Streets, along School Street to Nuuanu Avenue and Valley Road to Nuuanu Pali, thence southeasterly along the Koolauopoko-Kona boundary to Konahuani, thence to and along the west boundary of Manoa Valley to the northern corner of the Second Precinct, along western boundary of Second Precinct and continuing down the ridge between Awalouini and Kewalo to the starting point.

Polling Place—Pacific Heights Tramway Road and Nuuanu Avenue. FOURTH PRECINCT—All that portion of the said District bounded by the Third Precinct, Nuuanu, Vineyard, Emma, Beretania and Alapai streets and a line the extension of Alapai to its intersection with the southeastern corner of the Third Precinct.

Polling Place—Emma Square. FIFTH PRECINCT—All that portion of the said District bounded by Millant, King, Punchbowl, Beretania, Alapai, King and South Streets and the Waterfront.

Polling Place—Kapualua Building. SIXTH PRECINCT—All that portion of the said District bounded by Millant, King, Punchbowl, Beretania, Emma, Vineyard, and Nuuanu Streets and the Waterfront.

Polling Place—Near the Fire Station, corner Beretania and Fort Streets. SEVENTH PRECINCT—All that portion of the said District lying outside of the District of Honolulu.

Polling Place—School House, Waianaloa. EIGHTH PRECINCT—All that portion of the said District lying north of King Street, and between the Second Precinct and the Third, Fourth and Fifth Precincts.

Polling Place—Thomas Square. NINTH PRECINCT—All that portion of the District of Honolulu bounded by the Second Precinct, King and South Streets and the sea.

Polling Place—Corner of South Street and Kawalahou Lane. TENTH PRECINCT—All that portion of the District of Honolulu bounded by the First, Second, Third and Seventh Precincts.

Polling Place—Corner of King and Alexander Streets. FIFTH DISTRICT.

All that portion of the Island of Oahu lying west and north of Nuuanu Street and a line drawn in extension thereof from the Nuuanu Pali to Mokapu Point.

FIRST PRECINCT—All that portion of the Judicial and Taxation District of Koolauopoko lying west and north of a line drawn from Nuuanu Pali to Mokapu Point.

Polling Place—Kaneohe Court House. SECOND PRECINCT—The Judicial and Taxation District of Koolauloa.

Polling Place—Koolauloa Court House. THIRD PRECINCT—The Judicial and Taxation District of Waialua.

Polling Place—Waialua Court House. FOURTH PRECINCT—The Judicial and Taxation District of Waianae.

Polling Place—Waianae Court House. FIFTH PRECINCT—All that portion of the Judicial and Taxation District of Ewa, comprised in the lands of Hoaeae and Honouliuli.

Polling Place—Ewa Pavilion. SIXTH PRECINCT—All the remaining portion of the Judicial and Taxation District of Ewa.

Polling Place—Ewa Court House. SEVENTH PRECINCT—All that portion of Honolulu or Kona lying mauka of King Street, and between the Sixth Precinct and Palama Chapel Road and the southern branch of the Oahu Railroad following same to its first near approach to the sea, and all of said District lying mauka of King Street between the Sixth Precinct and the boundary between Kalihi and Kahauiki.

Polling Place—Kalihi Pumping Station. EIGHTH PRECINCT—All that portion of Honolulu or Kona lying mauka of King Street from the main road of Kalihi Valley to Liliha Street and a line drawn from the head thereof in extension of the line of Judd Street, to and along the ridge forming the westerly border of Nuuanu Valley.

Polling Place—King Street, mauka of Kaulaui School. NINTH PRECINCT—All that portion of Honolulu or Kona lying between the Eighth Precinct and Nuuanu Street and mauka of a line drawn along School Street, the Nuuanu Stream and Beretania Street.

Polling Place—At junction of Kuakini and Nuuanu Streets. TENTH PRECINCT—All that portion of Honolulu or Kona bounded by Nuuanu Street, the Ninth, Eighth and Seventh Precincts and the Waterfront.

Polling Place—Aala Warehouse. ELEVENTH PRECINCT—All that portion of Honolulu or Kona lying mauka of King Street and between the Seventh and Eighth Precincts.

Polling Place—Giltick Avenue, mauka of Kalihiwaena School. SIXTH DISTRICT.

Islands of Kauai and Niihau. FIRST PRECINCT—The Island of Niihau.

Polling Place—Niihau School House. SECOND PRECINCT—That portion of Kona District lying between Na Pali and the boundary between Kahala and Waimea Plantations and a line the extension thereof along the western edge of Waimea Valley.

Polling Place—Kekaha School House. THIRD PRECINCT—All that portion of the Kona District lying between the Second Precinct and the land of Hanapepe.

Polling Place—Waimea Court House. FOURTH PRECINCT—From and including Kakaheo to and including Hanapepe.

Polling Place—Hanapepe School House. FIFTH PRECINCT—All of the District of Kona lying east of the land of Kalahao.

Polling Place—Kolon Court House. SIXTH PRECINCT—All the District of Puna extending from the lands of Wallua to and including the lands of Kipu.

Polling Place—Lihue Court House. SEVENTH PRECINCT—All of the District of Puna extending from the land of Papanu to and including the land of Wallua.

Polling Place—Court House, Kapa. EIGHTH PRECINCT—Extending from the Kalihwai River to and including the land of Papanu.

Polling Place—Kilauea School House. NINTH PRECINCT—Extending from the Kalihwai River to the north boundary of the District of Kona.

Polling Place—Waioli Court House. The electors in the foregoing Representative Districts are entitled to elect Representatives as follows:

- In the First District—four; In the Second District—four; In the Third District—six; In the Fourth District—six; In the Fifth District—six; In the Sixth District—four.

THIRD PRECINCT—All that portion of the Kona District lying between the Second Precinct and the land of Hanapepe.

Polling Place—Waimea Court House. FOURTH PRECINCT—From and including Kakaheo to and including Hanapepe.

Polling Place—Hanapepe School House. FIFTH PRECINCT—All of the District of Kona lying east of the land of Kalahao.

Polling Place—Kolon Court House. SIXTH PRECINCT—All the District of Puna extending from the lands of Wallua to and including the lands of Kipu.

Polling Place—Lihue Court House. SEVENTH PRECINCT—All of the District of Puna extending from the land of Papanu to and including the land of Wallua.

Polling Place—Court House, Kapa. EIGHTH PRECINCT—Extending from the Kalihwai River to and including the land of Papanu.

Polling Place—Kilauea School House. NINTH PRECINCT—Extending from the Kalihwai River to the north boundary of the District of Kona.

Polling Place—Waioli Court House. The electors in the foregoing Representative Districts are entitled to elect Representatives as follows:

- In the First District—four; In the Second District—four; In the Third District—six; In the Fourth District—six; In the Fifth District—six; In the Sixth District—four.

FOR SALE.

The mountain section of the Mt. of Kalawahine, containing an area of 183 1/2 acres.

This land extends from a short distance above the Lunallilo Home to the peak of Tantalus and thence to the head of Manoa valley. It includes a portion of the upper section of Papanu Valley.

The Government Tantalus Road runs through the property for about three miles, making easy access available to all parts. It contains all of the choice, available locations for Mountain Homes.

There are never-falling springs of the upper end of the property which could be opened up and made to furnish an ample water supply. There are several houses and gardens on the property.

The land is heavily timbered and reaches an elevation at its highest point of over 2,000 feet. In the rugged high elevations apply to the best information bring to

A. V. GARDNER, 125 King St.

UNEQUALLED SHORT TRIPS FOR TRAVELLERS.

Tourists who wish to see the windward side of Molokai, with its wonderful cliffs, deep gulches and fertile valleys, with the most unique and beautiful prospects on every hand, should take the trips on the new steamer Likelike. Around Molokai in daylight with night run to Lahaina, the ancient capital.

Sailing, Monday at 5 p. m., returning Tuesday night.

Sailing, Wednesday at 5 p. m., returning Friday night.

New steamer, all deck staterooms, airy and commodious.

Full particulars at Wilder's Steamship Company Office.

The Weekly Edition of the Evening Bulletin gives a complete summary of the news of the day.

Read "Wants" on page 6.



IN TESTIMONY

WHEREOF, I have

hereunto set my hand

and caused the seal of

the Territory of Hawaii

to be affixed.

DONE AT THE CAPITOL,

In Honolulu, this

29th day of August,

A. D. 1904.

G. R. CARTER,

Governor of Hawaii.

REAL ESTATE TRANSACTIONS

Recorded Aug. 22, 1904.

Kuanua (W) to Koni (K); D; per R P 139 and pc land. Kula, Hamakua, Maui; \$50. B 258, p 219. Dated June 11, 1904.

James Anahu to Ter of Hawaii; D; 1-5 int in por R P 5689, Kul 2806, Hotel St extn, Printers lane, Honolulu; \$361. B 258, p 320. Dated Aug 13, 1904.

Charles M Cooke Ltd by regr; Notice of decree of title in Land Reg Court Case No 15. B 265, p 127. Dated Aug 20, 1904.

Charles H Bishop and wf to E Faxon Bishop et al trs; Mod Tr D; in re modification of 2nd Tr D in b 258, p 284. B 258, p 321. Dated Aug 16, 1904.

George C Stratemyer et al to Est of George C Stratemyer by tr; Lis Pendens: in re title of por lot 362, R P 3269, Piikoi St, Honolulu. B 265, p 128. Dated Aug 22, 1904.

T Asaka to Yawamatsu Shige; BS; 1 fishing boat, masts, sails, oars, etc; \$245. B 265, p 129. Dated Aug 22, 1904.

Kaliko and hsb et al to Kohala Land Co Ltd; D; int in 3 acres of Gr 2766, Alinaloa, Kohala, Hawaii; \$19,055. B 258, p 323. Dated Aug 6, 1904.

Recorded Aug. 23, 1904.

Anna Klemme to Henry Klemme; PA; general powers. B 265, p 130. Dated Oct 6, 1903.

Thos P Cummins tr to C Chop Leong; L; por R P 7501, Kul 1123, Kawaiki, Honolulu; 19 yrs at \$120 pr yr. B 257, p 444. Dated Aug 2, 1904.

Mrs Anna M Klemme by atty to G P Castle; AM; mtg E Goess on household furniture, furnishings, etc, on 2nd floor of 2-story bldg, Beretania St, Honolulu; \$400. B 257, p 255. Dated Aug 22, 1904.

Chas W Booth and wf to Manuel M Pedro; D; por Ap 1, R P 602, Kul 273, Kaulaui drive, Honolulu; \$500. B 261, p 360. Dated Aug 23, 1904.

Manuel M Pedro and wf to Chas W Booth; M; por Ap 1, R P 302, Kul 273, Kaulaui drive, Honolulu; \$250. B 259, p 373. Dated Aug 23, 1904.

Kauhala (K) by mtgce to Douglas Kaona; R Affd; R P 3634, Kul 964, Mauna, Waianae, Oahu. B 259, p 375. Dated Aug 22, 1904.

Kauhala by mtgce to L L McCandless; D; R P 3634, Kul 964, Mauna, Waianae, Oahu; \$325. B 258, p 324. Dated Aug 22, 1904.

E Faxon Bishop et al trs to Charles H Bishop; D; pc land, Kewalo St, Honolulu. B 258, p 325. Dated Aug 19, 1904.

Charles H Bishop to E Faxon Bishop; D; pc land cor Kewalo and Lunalilo Sts, Honolulu; \$1,000. B 258, p 326. Dated Aug 18, 1904.

J S Emerson and wf to Emmeline M Magoon; D; pc land, Waikiki, Honolulu; \$1,000. B 258, p 327. Dated Aug 11, 1904.

Kahala Wilcox and hsb by mtgce to John Hind tr; For Affd; R P 7375, Kul 8214, Ahp Pukoo 2nd, Molokai. B 259, p 378. Dated Aug 18, 1904.

Est of Wm L Wilcox by exor to Emma M Nakuiua; D; int in R P 7232, Mapulehu, Molokai; \$325. B 258, p 328. Dated Aug 11, 1904.

Kahala Wilcox and hsb by mtgce to Emma M Nakuiua; D; R P 7375, Kul 8214, Ahp Pukoo 2nd, Molokai; \$1,000. B 258, p 320. Dated Aug 18, 1904.

Emma M Nakuiua and hsb (M K) to Helen E Carpenter; M; R P 7232, Mapulehu, R P 7375, Kul 8214, Ahp Pukoo 2nd, Molokai; por R P 2288, Kalihiwaena, Honolulu; \$2,000. B 259, p 382. Dated Aug 18, 1904.

AMERICAN-HAWAIIAN S. S. CO.

Direct Service between New York and Hawaiian Islands, via Pacific Coast

From New York

S.S. "ALASKAN" ... to sail about SEPT. 1

Freight received at all times at the Company's Wharf, 41st Street, South Brooklyn.

From San Francisco

S.S. "NEVADAN" ... to sail AUG. 25

Freight received at Company's Wharf, Greenwich Street, and each month thereafter.

From Honolulu to San Francisco

S.S. "NEVADAN" ... to sail about SEPT. 10

From Seattle and Tacoma

S.S. "NEVADAN" ... From Seattle AUG. 30

... From Tacoma SEPT. 1

From Portland, Or.

For further information apply to

G. P. MORSE, H. Hackfeld & Co., Ltd

General Freight Agent. AGENTS, HONOLULU.

Canadian-Australian Royal Mail

Steamship Company.

Steamers of the above line, running in connection with the CANADIAN-PACIFIC RAILWAY CO. between Vancouver, B. C., and Sydney, N. S. W., and calling at Victoria, B. C., Honolulu and Suva, Fiji and Brisbane, and DUE AT HONOLULU on or about the dates below stated, viz:

From Vancouver and Victoria, B. C. (For Brisbane and Sydney.)

From Sydney and Brisbane. (For Victoria and Vancouver, B. C.)

MIOWERA ... AUG. 27 AORANGI ... SEPT. 11

MANUKA ... SEPT. 24

AORANGI ... OCT. 22

Through Tickets issued from Honolulu to Canada, United States and Europe. For Freight and Passage and all general information, apply to

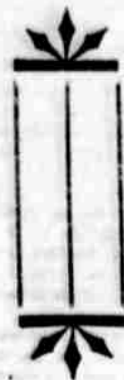
Theo. H. Davies & Co., Ltd. General Agents.

J. F. Morgan, President; C. J. Campbell Vice President; J. L. McLean, Secretary; A. F. Clark, Treasurer; N. E. Gedge, Auditor; Frank Hunter, Manager.

Hustace-Peck Co., Ltd.

DRAYMEN,

# PAINT HARMONY



If you are at all in doubt about the harmonious combination of paint for your building let us help you.

The Sherwin-Williams Co., makers of S.W.P., have a department for furnishing good combinations free of charge.

Let us send a photograph or architect's drawing to them for you. They'll send back three correct color combinations for you to choose from.

This won't bind you to use their paint and won't cost you a cent.

E. O. HALL & SON, Limited.

## Song Recital

The eminent artist  
**MADAME**  
**Fried-Griselda**

Tuesday Evening,  
Sept. 6th,  
8.30 P.M.

—AT—  
Alexander Young Hotel

Tickets \$1 each at Wall-Nichols Co. and Bergstrom Music Co.

## RENT OR LEASE.

The second storey of the  
**'Metropole' Building**

Suitable for Lodging, etc.  
Possession given Sept. 1, 1904.

Apply  
**Allen & Robinson,**  
Limited.

## MAUNA LOA REPORT

The steamer Mauna Loa arrived from Maui, Kona and Kau ports at 5 o'clock this morning, with 8000 bags H. A. Co. sugar, 32 head cattle, 50 hogs, 11 crates chickens, 168 bags taro, 75 bags coffee, 19 bundles awa, 14 bags ginger, 105 bunches bananas, 21 crates fruits, 7 crates cabbages, 49 cases honey, 20 bundles hides, 25 kegs butter, 4 tins butter, 32 cases fish and 240 packages sundries.

The following sugar is reported at Hawaii ports ready for shipment: Honolulu, 3600.

Purser Conkling reports as follows: We had smooth water both on outward and inward trip. The weather has been close, sky overcast the greater part of the time and frequent showers. On Hawaii rain has been heavy and general.

The volcano of Kilauea is smoking. Pahala mill is grinding daily. No definite time has been set for resuming the grinding at Hatcher's plantation. It is probable it will commence this week.

The BUSINESS MAN'S HANDY INDEX, published in the Saturday Bulletin in the Weekly Edition, gives a concise and complete resume of all legal notices, calls for tenders, judgments, building permits and real estate transactions. Evening Bulletin, 75 cents per month. Weekly Bulletin, \$1 per year.

"For Sale" cards at Bulletin office.

## Do Not Be Deceived

By a few samples. Anyone can buy samples, but it is not every one can do you good work. We buy our material at wholesale prices therefore can give you the best work at the lowest prices. Get our prices and compare them with others. No charge for examinations and an estimate of your work. Lady Assistant.

### THE EXPERT DENTISTS,

HOURS, 8 to 5; Sundays, 9 to 12.

# IT'S IN TOWN! SHIPPING INTELLIGENCE

## The Celebrated GORDON DRY GIN

Is here and can be had at all First Class bars and hotels. Try it and be convinced of its merits. We respectfully call your attention to the official analysis on the back of the bottle. This gin is strictly pure and free from fusel oil and we take a pride in presenting it to the public, with the assurance that it will meet with universal favor.

Ask For It Decline Imitations

**Thos. F. McTighe & Co.,**  
Sole Distributors for Territory of Hawaii.  
TEL. MAIN 140 93 & 95 KING ST.  
P. O. BOX 755

## BY AUTHORITY

### POSTPONEMENT NOTICE.

Proposals advertised to be opened September 5th, for constructing certain buildings at the Insane Asylum grounds, Honolulu, will be opened on the following day, September 6th, at 12 o'clock noon.

C. S. HOLLOWAY,  
Superintendent of Public Works,  
Honolulu, T. H., Aug. 30th, 1904.  
2856-3t

### CONCRETE ARCH CULVERT AND APPROACHES AT WAIAMA GULCH, SOUTH HILO, HAWAII.

Proposals will be received at the office of the Superintendent of Public Works, until 12 o'clock of Sept. 19, 1904, for constructing a Concrete Arch Culvert and Approaches at Waiama Gulch, District of South Hilo, Hawaii, T. H.

Plans and specifications are on file at the office of the Asst. Supt. of Public Works, Honolulu, and with E. E. Richards, Agent Public Works Department, Hilo, Hawaii, copies of which will be furnished intending bidders on receipt of \$5.00, which sum will be returned intending bidder after he has deposited his bid and returned the plans.

Proposals must be submitted on the blank forms, which will be furnished by the Asst. Supt. of Public Works and enclosed in a sealed envelope addressed to Hon. C. S. Holloway, Superintendent of Public Works, Honolulu, T. H., endorsed "Proposal for Concrete Arch Culvert and Approaches at Waiama Gulch, District of South Hilo, Hawaii, T. H."

Each proposal must contain the full name of the party or parties making the same and all persons interested therein and must be accompanied by a certified check of 5% of the amount of the proposal, payable to C. S. Holloway, Superintendent of Public Works, as surety that if the proposal be accepted a contract will be entered into.

No proposal will be entertained unless made on the blanks furnished by the Asst. Supt. of Public Works and delivered at the office of the Superintendent of Public Works previous to 12 o'clock m. on the day specified.

The Superintendent reserves the right to reject any or all bids.

C. S. HOLLOWAY,  
Superintendent of Public Works,  
Honolulu, T. H., Aug. 30, 1904.  
2856-3t

### PASSENGERS DEPARTED.

For Hilo and way ports, per stmr. Kinau, Aug. 29.—For the Volcano: T. Lunstedt and wife, J. Adams, wife and maid; F. W. Butler, R. W. Kempshall, Miss C. E. Kempshall, Mrs. R. W. Kempshall, Miss McCarthy, Mrs. Robt. Moore, E. J. Moses, Jr., C. B. Renner, J. M. Riggs, H. B. Gehr, Miss W. Sharp, Miss A. Akina, J. A. Clapp, Jr., L. W. Hayward, Miss McHardy, Miss E. McHardy, Miss M. Wilcox, Miss E. J. Weick, Geo. W. Morse, C. V. Sturtevant, Mr. Kalakala, T. McCants Stewart, Miss E. Bond, Mrs. W. H. Patton, Mrs. L. de L. Ward and child, W. H. Crawford, F. T. P. Waterhouse, F. G. Hare, W. A. Folger and wife, L. Severance and wife, Mrs. B. Love, Mrs. A. De S. Christiana, E. Gardzik, C. A. Christiani, E. H. Moses, A. P. Taylor, Mrs. A. J. Williamson, Miss L. Williams, Dr. P. H. Reese, J. E. Pinkham, W. T. Robinson, Wm. J. Coelho, R. C. Lane, J. C. Lane, S. Mabelona, Geo. H. Mabelona, A. G. M. Robertson, Geo. L. Desha, Sr., W. H. Rice, Jr., S. Parker, F. E. Thompson, Miss L. A. Wong, Kong Kah, Miss M. Morris, Miss E. P. Quinn, J. A. Aheong, Jas. L. Holt, N. Fernandez, J. A. Gilman and wife, Dr. L. E. Cofer, W. F. Heilbron, E. D. Baldwin, Mr. Walker, H. C. Vida, Sam Johnson, H. C. Flinger, W. T. Rawlins, C. A. Long, J. K. Kalanianoole, F. Meyer, C. B. Lyman, Clarence Crabbe, C. L.

## TIDES.

Time	High	Low	High	Low
1st	10:00	4:00	10:00	4:00
2nd	10:15	3:45	10:15	3:45
3rd	10:30	3:30	10:30	3:30
4th	10:45	3:15	10:45	3:15
5th	11:00	3:00	11:00	3:00
6th	11:15	2:45	11:15	2:45
7th	11:30	2:30	11:30	2:30
8th	11:45	2:15	11:45	2:15
9th	12:00	2:00	12:00	2:00
10th	12:15	1:45	12:15	1:45
11th	12:30	1:30	12:30	1:30
12th	12:45	1:15	12:45	1:15
13th	1:00	1:00	1:00	1:00
14th	1:15	0:45	1:15	0:45
15th	1:30	0:30	1:30	0:30
16th	1:45	0:15	1:45	0:15
17th	2:00	0:00	2:00	0:00
18th	2:15	0:15	2:15	0:15
19th	2:30	0:30	2:30	0:30
20th	2:45	0:45	2:45	0:45
21st	3:00	1:00	3:00	1:00
22nd	3:15	1:15	3:15	1:15
23rd	3:30	1:30	3:30	1:30
24th	3:45	1:45	3:45	1:45
25th	4:00	2:00	4:00	2:00
26th	4:15	2:15	4:15	2:15
27th	4:30	2:30	4:30	2:30
28th	4:45	2:45	4:45	2:45
29th	5:00	3:00	5:00	3:00
30th	5:15	3:15	5:15	3:15
31st	5:30	3:30	5:30	3:30

Last quarter of the moon Sept. 2.  
Tides from the United States Coast and Geodetic Survey Tables.

Weather Bureau, Punalou, Aug. 30.  
— Temperature—Morning minimum, 75; midday maximum, 86.  
Barometer at 9 a. m., 30.01, steady.  
Rainfall, 00.  
Absolute moisture at 9 a. m., 7.2 grains per cubic foot.  
Humidity at 9 a. m., 65 per cent.  
Wind, light N. E.; weather, clear.  
R. C. LYDECKER,  
Territorial Meteorologist.

### ARRIVED.

Tuesday, Aug. 29.  
Stmr. Mauna Loa, Simerson, from Kau, Kona and Maui ports, at 5 a. m.

### DEPARTED.

Monday, Aug. 29.  
Am. schr. Carrie and Annie, Ekrem, for Ponape.  
Am. bkt. Coronado, Potter, for San Francisco.  
Stmr. Nacau, Pederson, for Kauai ports.  
Stmr. Likelike, Nappa, for Maui and Molokai ports.  
Stmr. Kauai, Bruhn, for Maui ports.

### SAILING TODAY.

Stmr. Claudine, Parker, for Maui ports, at 5 p. m.  
Stmr. W. G. Hall, Thompson, for Kauai ports, at 5 p. m.

### FIFTH DISTRICT

#### IN CAUCUS

#### UNTIES ALL KNOTS

The Republican Territorial delegates from the Fifth District held a caucus this morning at their headquarters and disposed of the representation on the Central and Executive Committees, it is believed to the satisfaction of all concerned. Under the action taken this morning the country products have as much representation on the Executive Committee as the city products.

The first thing done at the caucus was to substitute the name of Douglas in place of Low on the Central Committee from the Fifth Precinct of the Fifth District.

The members of the Central Committee then retired and after some deliberation, returned, recommending John C. Lane and Douglas as the Fifth District candidates for places on the Executive Committee. The caucus approved and the recommendations will be submitted to the Hilo convention.

At the Saturday night caucus when Mr. Low refused to serve on the Territorial Committee under the apportionment outlined by the caucus, the delegates refused to accept his resignation, hoping that he would reconsider his radical decision. Mr. Goodale, one of the caucus members, was disposed to accept the will of the majority and smooth over the differences. Low and his associates, however, were obstinate. In view of this situation the caucus finally decided to accept the resignation and put D. Douglass, a country delegate and put D. Douglass, a country delegate in Low's place. To further promote harmony the caucus withdrew I. Sherwood as a Fifth District representative on the Territorial Executive Committee and put Douglass in the place. This puts the outside districts in a position of absolute equality with the city precincts in their representation on the Territorial Executive Committee.

The committee appointed to call on the Governor and present the resolution with regard to W. J. Coelho, left for the Governor's office. The committee consists of Messrs. Geo. Lucas, F. T. P. Waterhouse, John C. Lane, Henry Vida and T. McCants Stewart.

The caucus then adjourned subject to the call of the chairman at Hilo.

Beat. W. M. McQuaid, J. G. Serrao, Mrs. G. Walden and child, E. E. Conant, C. Stark, J. H. S. Kaleo, Wm. Paikuli, W. Spitz, J. N. K. Kaiwi, Mrs. W. H. Rickard, H. E. Murray, E. W. Quinn, W. Pfothenhauer, C. F. Allen, C. N. Clark, Geo. C. Burningham, L. Tobarier, M. K. Kakuiwi, W. Carlyle, S. M. Kamakau, David Douglas.

For Maui and Molokai ports, per stmr. Likelike, Aug. 29.—C. L. White, Wilder White, F. H. White, N. Ferris, J. Morse, Mr. Keawe, S. K. Kalkoowal, B. Houghtaling.

For San Francisco, per bkt. Coronado, Aug. 29.—R. V. Smith, W. S. Webster, Geo. H. Allen and wife, Mrs. C. English, Misses Culver (2), Miss C. Sullivan.

For Kauai ports, per stmr. Kauai, Aug. 29.—I. M. Cox and wife, Master Cox, Mrs. Saple, Mrs. Nicol, J. A. Kennedy, Stanley C. Kennedy, C. G. Gilmore.

ON MONDAY MORNING, AUG. 29th,

## WHITNEY & MARSH

Will have their Sale of

PERCALES, 12 1/2c a yard.  
SHIRT WAIST MATERIALS  
3 and 3 1/2 yard lengths, 40c and upwards.  
FANCY HOSE, worth \$1.25 \$1.50; reduced to 35c.  
TAN STOCKINGS, good value, 5c a pair.  
STRIPED HOSE, worth 50c; reduced to 15c and 20c.  
Also, odd ends in TAFETAS, all shades, 25c.

SALE CONTINUES ALL WEEK.

## WHITNEY & MARSH

## STOCKYARDS STABLES.

FOR MOONLIGHT DRIVING PARTIES ORDER OUR  
**SIX HORSE TALLYHO.**  
TELEPHONE BLUE 3143 E. H. LEWIS, Proprietor.

## FIREARMS

Colts, Smith & Wesson,  
Iver Johnson

## REVOLVERS

Guns Rented and Repaired  
**Woods & Sheldon**  
SPORTING GOODS

## Charlie's Aunt

Was a widow but

## Charlie's Uncle

had a PACIFIC MUTUAL MATCHLESS POLICY and Charlie's Aunt was protected. All of which reminds us that getting life insurance (our kind) should not be neglected or postponed, for what are the ordinary affairs of life to a man when his wife is a widow.

## The Pacific Mutual Life Insurance Co.

CLINTON J. HUTCHINS,  
General Agent  
940 FORT STREET.

The Weekly Edition of the Evening Bulletin gives a complete summary of the news of the day.

## JAS. F. MORGAN

Auctioneer and Broker,  
847-857 Kaahumanu Street,  
P. O. BOX 594. TELEPHONE 2A

### For Sale

Among the many bargains in Real Estate that I have on my list I would draw your attention to

## The Boardman Tract

situate between Lunallo and Kinau, on Pensacola Street, now divided into lots and to be sold on very easy terms. Apply

**JAS. F. MORGAN,**  
AUCTIONEER.

### For Rent.

DWELLING HOUSES

Walkiki Road .....\$17.50  
Aloha Lane ..... 20.00  
King Street ..... 35.00  
Beretania Street ..... 32.50  
Young Street .....\$12.00, \$17.50, \$20.00

## Across the Continent

on the  
**NEW OVERLAND LIMITED**  
CHICAGO IN  
LESS THAN 3 DAYS  
NEW YORK  
3 DAYS 19 HOURS

LUXURIOUS EVERY DAY TRAIN

Bath, Barber, Buffet, Library, Electric Reading Lamps in every Booth, Observation Car, Telephone Service. \*\*\*\*\*

## SOUTHERN PACIFIC

C. S. FEL,  
Passenger Traffic Manager.  
T. H. GOODMAN,  
General Passenger Agent.  
San Francisco, : : CALIFORNIA,  
5-10-03.

## Three Trains Daily

VIA  
**UNION PACIFIC**  
TO  
Omaha, Kansas City,  
Chicago, St. Louis  
And All Principal Eastern Points

## No Change

To Denver, Kansas City, Omaha, Chicago.

Be sure your ticket reads via the  
**UNION PACIFIC**

For full information call on  
S. F. BOOTH, G. A.,  
1 Montgomery St., San Francisco, Cal.

## TEETH Without Plates.