

THE TRIBUNE
Publishes All the
News All the Time

Hilo Tribune.

THE WISDOM
Of Yesterday, the
News of Today.

VOL. II.

HILO, HAWAII, HAWAIIAN ISLANDS, TUESDAY, MARCH 13, 1906.

No. 20.

The Hilo Tribune.

PUBLISHED EVERY TUESDAY
OFFICE, KING STREET, - HILO, HAWAII
TRIBUNE BLOCK.

Hilo Tribune Publishing Company, Ltd.
Publishers and Proprietors.

President.....C. C. KENNEDY
Vice-President.....D. W. MARSH
Secretary-Treasurer.....J. W. MARSH
Auditor.....R. I. LILLIE
Directors.....G. A. COOL, C. MCLENNAN

Advertisements accompanied by specific
instructions inserted until ordered out.
Advertisements discontinued before expiration
of specified period will be charged as if con-
tinued for full term.

ATTORNEYS-AT-LAW.

Chas. M. LeBlond

ATTORNEY-AT-LAW

Hawaiian, Japanese, and Chinese Interpreters
and Notary Public in Office.

Office: SEVERANCE BUILDING,
Opposite Court House. HILO, HAWAII

C. Henry White

ATTORNEY-AT-LAW

NAALHU. - - - HAWAII

I. E. RAY

ATTORNEY-AT-LAW
AND NOTARY PUBLIC

Waiuanueue St. Hilo, Hawaii

J. L. Kaulukou

ATTORNEY-AT-LAW

OFFICE IN TRIBUNE BUILDING
HILO, HAWAII

REAL ESTATE, ETC.

F. S. LYMAN

AGENT

FIRE, ACCIDENT AND MARINE
INSURANCE

Waiuanueue Street, - Hilo, Hawaii

W. H. BEERS

INTERPRETER AND
TRANSLATOR
(English and Hawaiian)

Commission and Business Agent.

Will Act as Administrator, Guardian and
Executor. Rents and Bills Collected.
Office with I. E. Ray. Telephone 146

A. S. LeBaron Gurney

AUCTIONEER

COMMISSIONS
PROMPTLY EXECUTED

FRONT STREET
OPPOSITE SPRECKELS' BUILDING

ESTABLISHED 1898.

BISHOP & CO.

Bankers.

HONOLULU - OAHU, H. I.

Transact a General Banking and Ex-
change business

Commercial and Traveller's Letters of
Credit issued, available in all the principal
cities of the world.

Special attention given to the business
entrusted to us by our friends of the other
Islands, either as Deposits, Collections
Insurance or requests for Exchange.

FURNISHED ROOMS

BY DAY, WEEK OR MONTH.
Neat and newly fitted. Centrally and
pleasantly located on

PITMAN STREET
NEAR WAIUANUEUE ST.

Facing on Court House and Hilo Hotel
Parks. A quiet, pleasant retreat.
Terms Reasonable.

C. F. BRADSHAW

Proprietor.

43

DENTISTRY.

Dr. A. B. Clark has opened offices in
Spreckels' Block, room 3, entrance next
Hilo Drug Store.

BY AUTHORITY.

Public Lands Notice.

On Monday, March 19th, 1906, at 12
o'clock noon, at the Public Lands Office,
Hilo, Hawaii, will be sold at public
auction, to the highest bidder, under the
provisions of Sec. 17, Part IV, Land Act
1895, the following lot of Public Land:

Lots No. 17, A and B, P. L. Map 2,
Kamaili, Puna, Hawaii.

Area: 60 acres. Terms: Cash. Upset
price: \$300.00.

Plan of the lots, and full particulars as
to necessary qualifications of applicants,
method of applying, etc., may be obtained
at the Land Department, Honolulu, or at
the Sub-Agent's Office, Hilo, Hawaii.

JAS. W. PRATT.

Commissioner of Public Lands.
Honolulu, T. H., February 15th, 1906.
Feb. 20, 27-Mar. 6, 13

Hoolaha Aina Aupuni.

Ma ka Poakahi, Maraki ia 19, 1906, ma
ke Keena Aina Aupuni, ma Hilo, Ha-
waii, i ka hora 12 awakea, e kua i aku
ai ma ke kudala akea, i ka mea koho
kiekie, malalo o na manao o ka Pauku
17, Mahele IV, Kanawai Aina 1895, na
apana Aina Aupuni malalo iho nei:

Na Apana Helu 17, A a me B, (i hoo-
kahi apana) Piapala Aina Aupuni Helu
2, Kamaili, Puna, Hawaii.

Hiaina: 60 eka. Kumukahi haahaa:
\$300.00. Dala kuika.

O na kii o ka aina, a me na kuhikahi
piha e pili ana i na mea e pono ai ka
mea e noi ana, e loa no ma ke Keena
Aina Aupuni ma Honolulu, a i ole ma ke
Keena Aina Aupuni ma Hilo, Hawaii.

JAS. W. PRATT,

Komisina o na Aina Aupuni.
Honolulu, T. H., Februari 15, 1906.
Feb. 20, 27-Mar. 6, 13

Reconstruction of Maka- pala School House, Kohala, Hawaii.

Proposals will be received at the office
of the Superintendent of Public Works,
Honolulu, T. H., until 12 o'clock m. of
March 15th, 1906, for reconstructing the
Makapala School House at Kohala, Ha-
waii, T. H.

Plans, specifications and blank forms
of proposal may be obtained at the office
of the Assistant Superintendent of Public
Works, and with Dr. B. D. Bond, Kohala,
Hawaii, for which a deposit of \$5.00 is
required, which sum will be refunded in-
tending bidders after they have returned
the plans and specifications.

Proposals will not be accepted unless
submitted on the blank forms furnished,
enclosed with a certified bank check for
Fifty (\$50.00) Dollars in a sealed en-
velope, endorsed "Proposal for the Recon-
struction of Makapala School House at
Kohala," and delivered previous to 12
o'clock m. of the day specified at the
office of the Superintendent of Public
Works who reserves the right to reject
any or all bids.

C. S. HOLLOWAY,
Superintendent of Public Works,
Department of Public Works, Honolulu,
T. H., Feb. 27th, 1906. 19-2

Notice.

At the annual meeting of the stock-
holders of the Hilo Tribune Publishing
Co., Ltd., held Tuesday, February 27,
1906, the following were elected officers
for the ensuing year:

C. C. Kennedy.....President
D. W. Marsh.....Vice President
J. W. Marsh.....Secretary and Treasurer
R. I. Lillie.....Auditor
The foregoing with C. A. Cool and C.
McLennan constitute the Board of Direc-
tors.

J. W. MARSH,
Secretary.

19-4

Notice.

At the annual meeting of the stock-
holders of the L. Turner Co., Ltd., held
on Saturday, February 24, 1906, in the
office of the company, the following were
elected officers for the ensuing year:

C. C. Kennedy.....President
Adam Lindsay.....Vice President
N. C. Willfong.....Secretary
L. Turner.....Treasurer
F. A. Medcalf.....Auditor
The foregoing with John T. Moir and
C. Castendyk, comprise the Board of Directors.

N. C. WILLFONG,
Secretary.

18-4

Furnished Rooms for Rent.

Large, nicely furnished rooms opening
on two verandas for rent very reasonable.
MRS. WRIGHT.

PORTUGUESE LAND SETTLEMENT PROGRESS

Report of the Grand Jury.

We, the Grand Jurors, duly impaneled and sworn, in and for the
February, 1906, Term of the Circuit Court of the Fourth Judicial Circuit,
Territory of Hawaii, do hereby present the following report:

In addition to the indictments already returned into court by us, we
have found and present herewith indictments as follows:

An indictment against Shim Miung Ok, Kang Yung Bok, Woo
Miung Sook, Han Sang Won, Chang Chee Yuel and Kim Yung Yee,
charged with the crime of murder in the first degree.

An indictment against Houjo Tsunatoro, Seki Mitsuda and Fugisaki
Matsutaro, charged with the crime of murder in the first degree.

An indictment against Makino Kisaburo, Toga Arakichi, Matsuo
Esuke, Kido Kichiji and Yamanaka, charged with the crime of
assault and battery with a weapon obviously and imminently dangerous
to life.

An indictment against Juan Enandes, charged with contempt of
court.

Six indictments for various other offenses.

In addition to finding indictments as above set out, the grand jurors
have investigated in accordance with the instructions of the court, the
matter of alleged bribery of jurors during the trial of the case of Jacintha
Fernandez vs Evangelino De Silva and H. S. Overend at the May, 1905,
term of this court. Our investigation into this matter was very thorough,
we having spent about four days in an attempt to secure tangible evi-
dence in regard to the matter.

The grand jurors are satisfied in their own minds that some of the
jurors who sat upon the case of Jacintha Fernandez vs Evangelino De
Silva and H. S. Overend were unduly influenced, but owing to the
great length of time which has elapsed since the trial of that case and
for other reasons, the grand jurors were unable to secure sufficient legal
evidence to warrant them, in their opinion, in returning an indictment
in that regard.

The grand jurors, also under instructions from your Honor, investi-
gated the matter of alleged gambling in the town of Hilo. This in-
vestigation extended over the greater part of two days. A large number
of witnesses were examined before the grand jurors, and as a final result
of our investigations we are of the opinion that no regularly equipped
gambling houses at present exist in the town of Hilo, and have not for
some months last past, except houses conducted by Japanese and Chinese
gamblers. In regard to the Chinese and Japanese gambling houses, we,
under the guidance of Deputy Sheriff Fetter, visited three gambling
houses, two run by Chinese and one run by Japanese. From the man-
ner in which these houses were barricaded and the approaches to the
rooms guarded, and from the character of the furniture found in the
rooms, we are of the opinion that gambling games are being run regu-
larly therein.

We examined some witnesses in regard to these Chinese and Japanese
gambling houses, but were unable to secure any evidence which would
warrant us in charging any particular person with conducting or engag-
ing in a gambling game at such Chinese or Japanese houses.

In this connection we desire to state to your Honor that arrests are
continuously being made by Deputy Sheriff Fetter of Japanese and
Chinese gamblers, and we think that the Sheriff's department is at the
present time doing all in its power to suppress criminal offenses of that
character.

Whilst visiting the Chinese and Japanese gambling dens, we were
very much struck with the filthy and unsanitary condition of the
premises, and we think some steps ought to be taken without delay to
improve such unsanitary conditions.

[The report here states that a member of the Board of Supervisors
made a statement to the grand jurors charging certain persons in the
county road department with improper and reprehensible conduct. Such
offenses were found to be not sufficient to warrant a criminal charge,
and it was recommended that the Board dispose of the matter.]

Charges were brought against the sheriff's department by the same
member of the Board of Supervisors. The facts were not found to war-
rant charging any person or persons with violation of the penal laws of
the Territory. The fact developed during the investigations that a
former clerk in the sheriff's office had retained in his possession bail
money to the amount of \$265. This act was justified by the fact that
uncertainty existed as to the status of two sets of employees at that time,
since settled by the decision of the supreme court. These funds had
since been turned over to the sheriff's office, excepting a balance of \$15
not accounted for.]

It has been brought to our attention that sometime during the year
1905, a minor who had been sentenced by District Magistrate Hapai to
a term in the territorial reform school, was set at large because of a
conflict between the officers of the county of Hawaii and territorial
officials as to liability for transportation of said minor from the county
of Hawaii to the city of Honolulu where the reform school is located.
The territorial officials claimed that this expense was a county charge,
and the county officers of the county of Hawaii claimed that this ex-
pense should be borne by the territory. We condemn the condition of
affairs which permits of the release of any persons, either when com-
mitted to the reform school by due process of law or to any other terri-
torial institution, and we suggest to both the territorial officials and to
officers of the county of Hawaii that there be secured a speedy determi-
nation by the supreme court upon the question of the liability for such
transportation.

In closing we desire to express our appreciation of the able manner in
which the deputy attorney-general, Mr. Milverton, has conducted the
cases brought before us and for his assistance in all our investigations.

Respectfully submitted,

A. HORNER,
Foreman of the Grand Jury.

British General Passes Away.

London, March 6.—General Gatacre is dead.
[Lieutenant General Sir William Forbes Gatacre was born in 1843
and saw service in Burmah, India, the Soudan and South Africa. He
first met with serious reverses in fighting the Boers, but eventually re-
tired with these and was made commander of the Third Division of the
South African field force.]

Cyclone in Oceanica.

Paris, March 5.—The governor of Oceanica officially reports 327
houses destroyed by the recent cyclone. One life was lost.

Not Rushing Troops to Orient.

Washington, D. C., March 5.—It is announced that the government
is not trying to charter transports to take troops to the Philippines.

Longworths Returned.

Washington, D. C., March 4.—The Longworths have returned from
their wedding trip.

Unusual Activity at Volcano.

There were interesting times at the Volcano Sunday, according to a
party consisting of Mrs. E. J. Waddell and Miss Waddell, of Nebraska,
Mrs. Lattin, of Los Angeles, and Miss Esther Lloyd, of Honolulu, who
spent from five o'clock till ten at the crater watching the fire. The
manager of the Volcano House telephoned to the TRIBUNE Monday that
there was unusual activity in the crater, and that the glow could be seen
and the roar of the volcano could be heard at the hotel.

An Oriental Banquet.

Dr. Omura, who leaves Hilo soon for Japan, on Saturday night gave
a farewell banquet at Hotel Koizumi to some of his friends in and near
Hilo, to which also Dr. Henry Hayes, J. U. Smith and a TRIBUNE rep-
resentative were invited. The banquet was served in true Japanese
style and was a most enjoyable affair. Dr. Hayes, as well as the other
visitors, was called on for a speech and Dr. Omura and Dr. Niidate re-
sponded, Dr. Nakazawa acting as interpreter. Musicians were present
and speeches were interspersed with songs, one of which was dramatic in
its character and was well acted. The hosts displayed a genuine courtesy
and hospitality that would have done credit to any banquet.

Olaa Offers Homes to Portuguese.

The managers of Olaa plantation, recognizing the justice of the claim
that the Portuguese are entitled to consideration as well as new immi-
grants, have decided to offer homesteads to laborers now working on the
place who will stay with the company for a term of three years.

L. A. Thurston, president of the company, was in Hilo recently, and
on his return to Honolulu gave out the following information to the
Advertiser:

"Mr. Thurston stated that while he was at the plantation he consulted
with Manager Watt in regard to the matter, and Mr. Watt is entirely in
accord with the policy. An inspection of the plantation was made by
Mr. Watt and Mr. Thurston and a 200-acre tract of land near the "11-
mile" post on the Volcano road was selected as the site to be cut up into
homesteads of one acre each.

"A house costing between \$250 and \$300, with a 2000-gallon water
tank, will be furnished to each Portuguese laborer who will agree to
stay with the company for a term of three years. The wages to be paid
are the same as the laborers are now receiving. They will also receive
free firewood and medical attendance, and hospital services for which a
charge of from 10 to 15 cents a month is made for each laborer and his
family.

"The offer was immediately accepted by a number of the Portuguese
workmen on the plantation and the indications are that practically all of
them will take it up.

"If there is a demand for more land than the location already selected,
other sites will also be set apart. Later on another village site will be
laid out near Mountain View on the upper Olaa land.

"Surveyor Thrum is already engaged in laying out the lands at "11-
mile" and the erection of buildings will be proceeded with immediately.
The land being utilized is of the best cane lands on the plantation. It
is land from which a crop has just been harvested and was in process of
preparation for planting another crop when set aside for homesteading.

"The company is of the opinion that it is a wise investment as it will
make the laborers more comfortable and tend to make them more con-
tented and less liable to want to leave."

Conditions Unsettled.

Peking, March 6.—General Yuan Shi Kai is fortifying the approaches
to the capital with modern artillery upon the pretext that secret societies
are active and it is necessary to protect the Imperial family.

In the newspapers the chief topic is the American report of a military
expedition to China.

London, March 6.—Japan has decided to send warships to Chinese
waters for the protection of Japanese interests.

Peking, March 6.—An official edict says that the warlike reports are
being circulated by traitors. Officials will protect the property of for-
eigners, it is set forth, under pain of severe punishment for failure.
Troops have been sent to the southern part of the province of Chili.

Earthquakes Constant.

Kingston, Island of St. Vincent, March 6.—Earthquake shocks have
been felt daily on this island and at St. Lucia since February 16.
La Soufriere is quiet, however.

Explosion on the Enterprise.

San Francisco, March 6.—By a boiler explosion on board the sugar
steamer Enterprise, Assistant Engineer May was killed. The damage
to the vessel was slight.

Railroads in Philippines.

Hartford, Conn., March 6.—A company with \$5,000,000 capital has
been incorporated here to build railroads in the Philippines.

General Schofield Dead.

St. Augustine, March 5.—Lieutenant General Schofield is dead.

The Hilo Tribune.

TUESDAY, - MARCH 13, 1906.

Entered at the Postoffice at Hilo, Hawaii, as second-class matter
PUBLISHED EVERY TUESDAY.
J. WHELOCK MARSH - Editor
D. W. MARSH - Business Manager.

A CIRCULAR letter has been sent to the business men of Hilo individually by L. A. Andrews, stating in detail his plan of organizing a pineapple growers' and canning company. It is universally agreed that the enterprise is one that Hilo should lose no time in entering upon. It is to be expected there will be differences of opinion on some of the details. In view of the importance of the proposition, these should be speedily reconciled; and the resultant of the best judgment of Mr. Andrews, as an expert on the subject, and of the business men of Hilo, should not be far from correct. The full extent of the benefit to Hilo of going ahead and putting in a cannery, is impossible to estimate. In the first place, it will show Hilo alive to her opportunities, as she always has been; in the second, it will at some not distant date bring financial returns in the way of coin from abroad for distribution to fruit growers, cannery owners and employees, and indirectly to every business man in Hilo.

THE SERRAO Block, offered to the county for \$12,500, is a desirable piece of property for business purposes and, doubtless, is a good buy at the figure. But, of course, it is totally unadapted to the uses of the county, and for the county to buy it would therefore be folly. "Never buy anything you do not need because it is cheap," is a homely saying but true, and nowhere more applicable than in the case of the county government. The county requires for its court house a block of ground as sightly and well situated as can be obtained, and a building constructed specially for its uses; as well built and furnished, and as imposing in appearance, as the resources of the country justify. It is usual to bond for such purposes. A country is judged to a certain extent by its public buildings, and they as permanent structures are usually built with a view to future development. The Serrao block may be worth the money; but it has really no value for county purposes.

Marine Items.

According to advices received here the Enterprise sailed from San Francisco on the 10th. The damage from the explosion was stated to be slight.

The Roderick Dhu will leave for San Francisco Wednesday with a full cargo of sugar.

The bark Annie Johnson is twenty-three days out from San Francisco and, being the record sailer, is overdue.

The wind of Wednesday and Thursday is said by mariners to be of unusual severity on account of its variability. The schooner Concord, landing powder on the Kohala coast, the Moi Waihine, and the Moi Kane, working at Paauilo, were compelled to run before the wind and put into Hilo bay. The Kaunoeuli, bound for Honolulu from Hilo with a load of sugar, put back from the upper end of the island, and off the lighthouse point had her boom and all sails but fore-sail carried away, rendering her nearly helpless. She was blown down to a point off the south point of the island, and near shore anchored. She was attempting to beat back, when the steamer Kailani took her in tow and brought her into port Sunday night. The schooner Woodbury that left here a week ago Saturday for Honolulu, put back from the north point of Molokai, after losing half a deck load of wood and ties. She put out again for Honolulu Monday morning.

A Unique Souvenir.

The Hilo Drug Co. has gotten up a souvenir for the Oregon young ladies who visited Hilo recently, that, it is safe to say, will amuse them much. A photograph of two Chinese children seated on a Hilo Drug Co's goods box with a dog between them, the cues of the children and the caudal appendage of the dog being noticeable features, is neatly mounted on card board, and beneath is printed the following Pidgin-English poetry:

"Dear girls, since you been gone away
We cly and cly 'most every day.
You no stay stop, we can't look see,
And we are lonely as can be.
So down here where the skies are blue
We reach out our hands and hearts to you,
And say 'hele mai,' come back dear girls."
One is to be sent to each of the party with the Drug Company's compliments.

BY AUTHORITY.

COUNTY OF HAWAII

TERRITORY OF HAWAII.

ORDINANCE NO. 17.

TO AMEND SECTION 3 OF ORDINANCE NO. 1 OF THE COUNTY OF HAWAII, TERRITORY OF HAWAII.

SECTION 1. That Section 3 of Ordinance No. 1 of the County of Hawaii, Territory of Hawaii, be amended so as to read as follows:

"SECTION 3. The County Clerk shall forthwith cause a true and correct copy to be posted upon a bulletin board in a conspicuous place in the rooms used by the Board of Supervisors for its meetings and shall also cause the same to be published at least once a week for two consecutive weeks in a newspaper or newspapers published at the County Seat."

J. F. WOODS,

Vice-Chairman of the Board of Supervisors.

Territory of Hawaii } ss.
County of Hawaii }

I hereby certify that the foregoing Ordinance was regularly considered at a meeting of the Board of Supervisors of the County of Hawaii, held at the County Seat upon the 8th day of March, A. D. 1906, and upon being put to vote said Ordinance was adopted by a majority of the Supervisors at said meeting.

IN WITNESS WHEREOF I have hereunto set my hand and affixed the seal of the County of Hawaii upon this 8th day of March, A. D. 1906.

[Seal] SAMUEL K. PUA,
Clerk of the County of Hawaii.

KALANA O HAWAII

TERRITORY OF HAWAII.

OLELO KAHOHA HELU 17.

E HOOLOLI ANA I KA PAUKU 3 O KA OLELO KAHOHA HELU I O KE KALANA O HAWAII, TERRITORY OF HAWAII.

PAUKU 1. O ka Pauku 3 o ka Olelo Kaohaha Helu i o ke Kalana o Hawaii, Teritori o Hawaii, ma keia ke hoololi ia nei, a e heluhelu ia me keia:

"Pauku 3. Mahope iho o ka hoololi ia ana o kekahi Olelo Kaohaha, e hoopaa koke ke Kakaulele o ke Kalana i ke kahi kope oia ma kekahi papa kaka ma ka lumi halawai o ka Papa, a e hoolaha ia ma kekahi poupe o ka mau neupala i paia ma ke Kulanakauhale o ke Kalana no hookahi manawa o ka poule, a e hoolaha ia no elua poule."

J. F. WOODS,

Hope Luna Hoomalu o ka Papa.
Teritori o Hawaii } ss.
Kalana o Hawaii }

Ke hooli nei au o keia Olelo Kaohaha ua laweia a noonooia ma ka halawai o ka Papa o ke Kalana o Hawaii, i noho ma ke Kulanakauhale Poo o ke Kalana ma ka la 8 o Maraki, M. H. 1906, a mahope o ke kaha ia ana o na e ame na hooli ua hoolohola keia Olelo Kaohaha e ka hapanui o ka Papa.

I HOIKE NO KEIA ke hoopaa nei au i kuu inoa ame ke sila o ke Kalana o Hawaii ma keia la 8 o Maraki, 1906.

[Sila] SAMUEL K. PUA,
Kakaulele Kalana o Hawaii.

At a meeting of the Board of Supervisors of the County of Hawaii, Territory of Hawaii, held March 6, 1906, the following resolution was passed unanimously:

RESOLUTION:

WHEREAS, More complete instructions to claimants would tend to create uniformity, avoid delay, save time of the Board and its committees, decrease annoyance to County Officers and to the claimants, save unnecessary affidavits and correspondence and in numerous other ways facilitate the transaction of public business, therefore be it

Resolved, By the Board of Supervisors of the County of Hawaii, that the instructions hereto attached be and the same are hereby approved.

Introduced by

S. L. DESHA,

Supervisor of South Hilo.

INSTRUCTIONS TO CLAIMANTS.

Unless otherwise directed by order of the Board of Supervisors of which notice shall have been given, and except labor on the roads which is otherwise provided for, all claims against the County shall be sworn to and the affidavit shall state "That no item in this demand has been heretofore presented to the Board of Supervisors for allowance except as herein specifically and separately stated." All demands shall be properly itemized in the English language, giving names, dates and particular services rendered, distance traveled, where from and where to. If services are rendered at court as a witness the title of the case and term of court must be given, all of which must be certified by the County Attorney or his deputy, if before the District Court it shall be certified by the Judge, Deputy Sheriff or officer representing the prosecution; if before a Coroner, the name of the deceased (if known), together with date and other particulars, and which shall be sworn to before the Coroner and certified by him. All demands for attendance at Court shall state whether on behalf of the prosecution or on behalf of the defense. If the demand is for transportation, the name of the person the purpose, and the name of the person ordering the same shall be given. All demands shall plainly state the character of the work done, number and dates of the days engaged, materials used or furnished, quantity and prices, by whom ordered, where and to whom delivered and all other available information shall be given. In all demands against the Road Fund the name of the road district must be given and shall not include items for more than one road district. Telephone service for, and salary demands of police as well as all other demands connected with the police service shall be certified by the Sheriff in addition to the certificate of the Deputy Sheriff of the district in which the services were rendered. All other demands shall be certified by the proper authority in charge of the work or ordering the supplies. If any claimant has accounts against more than one County Office he shall present all in one demand, but he shall divide it into sections, each section showing all the items due from each office, which shall be certified to by the officer as to the section relating to his office. Items for different months, if not previously presented, shall be included in one demand. All demands shall conform to all the requirements of law and of the several ordinances ordained by the Board of Supervisors of the County of Hawaii, and all amendments thereto and such ordinances as may be obtained from time to time.

When so completed such demand shall be filed in the office of the County Clerk three days before the first Tuesday of each month (Otherwise consideration thereof shall, in the discretion of the Board, go over until the next month). Unless the demand offered for filing shall conform to the above requirements the County Clerk shall refuse to file the same and shall return the demand to the claimant.

When any demand is allowed and audited (or any part thereof) it shall be the duty of the claimant to appear personally, or by agent or attorney, at the Auditor's office to receive and receipt for his warrant. The claimant may instruct the Auditor in writing to send his warrant by mail, but he shall first file his receipt therefor briefly showing the nature of the claim, and if so sent by mail it shall be at the owner's risk. All blanks, such as demands, receipts, power of attorney, together with other instructions may be obtained from the County Auditor, or Clerk, free of charge and no other forms shall be used. Red paper to be used for demands against the General Fund and Blue paper to be used for demands against the Road Fund.

Approved by the Board of Supervisors.

J. T. MOIR,

Chairman of the Board of Supervisors.

Attest:
SAMUEL K. PUA,
Clerk, County of Hawaii.

MA KA HALAWAI A KA PAPA LUNA KIAI O KE KALANA O HAWAII, TERRITORY OF HAWAII, MA KA LA 6 O MARAKI, 1906, UA HOHOLO LOKAHI KA OLELO HOHOLO MALALO IHO NEI:

OLELO HOHOLO.

Oiai, o ka hoomoakaka lea ana aku i na kuhikuhi ana i ka pou he mau kuleana koi ko lakou i ke Kalana he kumu ia e hookaulike ai, e hookaulike ole ia ai a e hookolomua ia ai hoi me ka hoopaa manawa ole i ka hana a ka Papa ame Komite, a e hoemi mai ana hoi i na hookupikipikio ana i na Luna Aupuni o ke Kalana, a e hoopaa loa ana hoi i na olelo hoike waiwai ole ame na palapala ana, a ma na ano apau e hookolomua ana hoi i ka hana ana i na hana o ka lehuiehu, nolaila, e

HOHOLOIA e ka Papa Luna Kiai o ke Kalana o Hawaii, o na Olelo A'o i hoopili pu ia me keia Olelo Hooholo ke apouia nei no ia.

Waihoia mai e S. L. DESHA,
Luna Kiai o Hilo Heina.

NA OLELO A'O I NA POE KOI I KE KALANA.

Aia wale no ka kauoha ia e ka Papa, e haawi mau ia aku ana hoi ka lohe, a e koe ana hoi na pou hana alanui e like me ia i hoomakaukau e ia, o na koi apau i ke Kalana e hookiki mau ia, a e hoike pu hoi ka olelo hoike penel. "Aole loa kekahi itamu iloko o keia koi i waiho mau ia mai i ka Papa Luna Kiai no ka aku ana aku koe wale no e like me ia i hookaka pakahi a kaawale ia." O na koi apau e hana pakahi ia no ia me ka moakaka lea loa ma ka olelo Enelani, e hoike ana i na inoa, na la ame ke ano o na uile i lawelawe ia, ka heluna nui o na uile i kahele ia, mai hea mai a nui hea aku hoi. Ina o ka hana i lawelawe ia ma ke ano no ia he hoike no ka Aha, e hoike ia ke ano o ka hihia ame ke kau i noho ai, a oia mau koi hoi e apouia no ia e ka Loia Kalana, a i ole, kona hope paha; ina imua o ka Aha Apana, e apouia e ka Lunapanawai, ka Hope Makai Nui, a i ole ka luna aupuni paha nana i lawelawe i na hihia ia imua o na aha ia. A ina imua o ke Koronero, ka inoa o ka mea i make (ina na maopopo) me ka la ame kekahi mau mea pili e ae i hoomaopopo, a e hookiki a apouia hoi imua o ke Koronero. O na koi apau no ka hele ana i ka Aha e hookomoi ana paha i hiki mai oia imua o na Aha ia mamuli o ke kauoha a ka asoa hoopili, a i ole, a ka asoa hoopili paha. Ina o ke

koi mamuli no ia o ka lawe ana i kekahi mea, e hookomoi no ka inoa o ke kaka, ke kumu, ame ka inoa o ka mea nana i kauoha. O na koi apau e hana ia no ia me ka moakaka lea loa i ke ano o ka hana ia, na lako i hookaloia, ka heluna nui ame ke kumukui ame ka mea nana i kauoha, a i hea a ia wai i haawia ai, ame kekahi mau hookaka kupono e ae. O na koi apau i ka Waihona Alanui, e hoike ia ka inoa o ka apana, a aole hoi e hookomo pu ia kekahi itamu a oi aku maawaho o hookahi apana. O na koi no ke Telepona ame na koi no ka'uku o na makai, a pila pu no hoi me na koi apau e pili ana i ka oihana makai, e hooli ia no ia e ka Makai Nui e pakai ana hoi i ka hooia a ka Hope Makai Nui o ka apana kahi i lawelawe ia ai o ka hana. O na koi e ae e hooli ia no ia e kekahi mea kupono i lona iaia ka mana nana e hoo-hana ana i ka hana a i kauoha paha i na lako e hookaloia. Ina he koi ka kekahi mea i kekahi keena o ke Kalana i oi aku mamua o hookahi, alaila, e hookomo oia ia mau koi apau maloko o ka bila hookahi, me ka maheluele ana hoi iloko o na pauku, e hoike ana kela ame keia pauku i kela ame keia keena o ke Kalana, a na luna o ke Kalana o kela ame keia keena e hooia pakahi i kahi i pili iaia. O na itamu no na mahina like ole, ina aole i waiho mau ia mai, e hookomo ia no ia iloko o hookahi koi. O na koi apau i ku i ke kanawai ame na Olelo Kauoha i hoolohola e ka Papa o ke Kalana o Hawaii, a i na hoololi hoi, a pila hoi i na Olelo Kauoha e hoolohola aku ana ma keia mau aku.

I ka wa e pau ai o na koi i ka hanaia, e waiho koke ia aku no ia me ke Kakaulele o ke Kalana ekolu la mamua e o ka Poalua mau o kela ame keia mahina (a ina aole pila e hoopaae ia no ka noonoo ia ana e like me ka manao o ka Papa a kekahi mahina hou aku.) Ina aole na koi i hana ia a kuli me na kuhikuhi i hookakaia senei mamua, alaila, ua lona ka mana i ke Kakaulele e hooli i ka waiho ana ia mai o ia koi ma kona keena a e hoiloli ia aku hoi i koi i ka mea nana ia koi.

I ka wa e ae ia ai o kekahi koi a hoolohola ia hoi e ka Luna Hooia (a i ole, o kekahi hapa paha) o kahi ia o ke kuleana o ka mea nana ke koi e hiki iloko ae, a i ole kona hope a loio paha ma ke keena o ka Luna Hooia i loa ai kana Bila Dala Aupuni me ka waiho pu aku i rikiki no ia mea. Ua hiki no i ka mea koi ke kauoha mai i ka Luna Hooia ma ke kakau e hoomua aku i kana Bila Dala Aupuni ma ka Hale Letu, aka, mamua o kona hana ana pila e waiho mau ae oia i kana rikiki e hoike ana ma ke ano nui i ke ano o kana koi, a ina hoomua ia aku ma ia ano maluna no o ka mea nana ke koi ke koi koi o ka aumua ana i na ulia apau. O na palapala pihakahaka, na koi, na rikiki, na palapala hookohi hope ame kekahi mau palapala kuhikuhi e ae e loa no ia mau mea me ka uku ole mamuli o ke kauoha ana ae i ka Luna Hooia, a i ole, i ke Kakaulele o ke Kalana paha, a aole no hoi e ae ia kekahi mau ano koi e ae. O na palapala koi ulaula no na koi no ia i ka Waihona Kumau mai, a o na palapala koi bolu no na koi no ia i ka Waihona Alanui.

Aponoia e ka Papa Luna Kiai.

J. T. MOIR,

Luna Hoomalu o ka Papa.

Ikea: SAMUEL K. PUA,
Kakaulele Kalana o Hawaii.

"Good Form" Clothes hangers are always "good form." Try a set and if you are not pleased you will have your money refunded at E. H. Moses.

Certainly if manly beauty and talent count as elements of success, Senator Palmer F. Woods and Mr. Arthur M. Burns should be able to conduct the Hilo Herald to the place where all good news papers go—Advertiser.

BY AUTHORITY.

Public Lands Notice.

On Saturday, March 31st, 1906, at and after 9 o'clock a. m. at the Court House, Honokaa, Hamakua, Hawaii, applications will be received under the provisions of Part VII, Land Act 1895, (Right of Purchase Leases) for the following lots of Public Land:

Lots 28 to 47, upper Paauilo Section, appraised as follows:

Lot No.	Area.	Appraised value.
28	47 acres	\$235.00
29	67 "	201.00
30	72 "	360.00
31	70.8 "	212.40
32	68.9 "	344.50
33	74.5 "	223.50
34	81.3 "	406.50
35	86.6 "	259.80
36	89.2 "	446.00
37	87.7 "	263.10
38	68.5 "	274.00
39	64.2 "	192.60
40	67.9 "	271.60
41	63.5 "	190.50
42	62.5 "	250.00
43	59.9 "	179.70
44	67.8 "	271.20
45	54.5 "	163.50
46	67.1 "	268.40
47	67.7 "	203.10

These lands are said to be suitable for the culture of tobacco.

Plans of the lots, and full particulars as to necessary qualifications of applicants, method of applying, terms, etc., may be obtained at the Land Department, Honolulu, Sub-Land Agent's Office, Hilo, or at the Office of Jos. Pritchard, Esq., Honokaa.

JAS. W. PRATT,
Commissioner of Public Lands.
Honolulu, T. H., February 27th, 1906.
Mar. 6, 13, 20, 27

Hoolaha Aina Aupuni.

Ma ka Poalua, la 31 o Maraki, 1906, ka hora 9 a. m. a mahope iho, ma ka Hale Hoookololo ma Honokaa, Hamakua, Hawaii, e waiho ia mai no na noi malalo o na manao o ka Mahela VII, Kanawai Aina 1895, (Kuleana Kuai Hooimaliuna) no na apana Aina Aupuni 28 a hiki 47, ma Paauilo mauka, penel:

Apana	Area	Kumu waiwai.
28	47	\$235.00
29	67	201.00
30	72	360.00
31	70.8	212.40
32	68.9	344.50
33	74.5	223.50
34	81.3	406.50
35	86.6	259.80
36	89.2	446.00
37	87.7	263.10
38	68.5	274.00
39	64.2	192.60
40	67.9	271.60
41	63.5	190.50
42	62.5	250.00
43	59.9	179.70
44	67.8	271.20
45	54.5	163.50
46	67.1	268.40
47	67.7	203.10

Ke manao ia nei, ua kupono keia mau aina no ke kanu i ka paka.

O na kii o ka aina, a me na kuhikuhi pila e pili i na mea e kupono ai ka mea e noi ana, ke ano o ka noi ana, etc., e loa no ma ke Keena Aina Aupuni ma Honolulu, Keena o ka Hope Akena ma Hilo, a i ole ma ke Keena o Jos. Pritchard, Esq., ma Honokaa.

JAS. W. PRATT,
Komisina o na Aina Aupuni.
Honolulu, T. H., February 27, 1906.
Mar. 6, 13, 20, 27

HILO AGENCY

HAWAIIAN TRUST CO., LTD.

INSURANCE

Placed in the following companies:

Standard Life and Accident Insurance Co.
Prudential Insurance Co. of America
Norwich Union Fire Insurance Society
English American Underwriters
Orient Insurance Company
Pacific Surety Company
Pacific Coast Casualty Company
Canton Insurance Office Limited (Marine)

Accident, Fire, Life, Sickness,
Marine, Plate Glass, Elevator,
Employers' Liability, Burglary,
Team and Automobile Insurance
Surety Bonds

Representing Cash Assets
of Over 110 Millions

Rates on Application at

First Bank of Hilo, Ltd

H. V. PATTEN, Agent

SERRAO LIQUOR CO LIMITED

WHOLESALE LIQUOR DEALERS

Complete Stock of Finest Table
Wines, Beers, Whiskies, Gins,
Brandsies and Liqueurs.

Sole Agent for

PRIMO BEER

Wholesale House:
Serrao Block, Shipman Street
Telephone No. 7

THE UNION SALOON

Always on Hand:

BEST BRANDS

Of Wines, Liquors, Beers
Mixed Drinks a Specialty

Draught and Bottled

PRIMO AND SEATTLE BEER

10c Per Glass

Shipman Street
Telephone No. 7

J. G. SERRAO, - Manager

PLANTERS' LINE

—OF—

SAILING VESSELS

Direct Line between SAN FRANCISCO
AND HILO.

Bark St. Catharine, Capt. Saunders
Bark Amy Turner, Capt. Warland
Sch. W. H. Marston, Capt. Gove

QUICK DISPATCH

For freight and passage apply to
WELCH & CO., Agents, San Francisco
J. BREWER & CO., Ltd., Agents,
Honolulu, or

H. Hackfeld & Co., Ltd.

AGENTS, HILO.

WALL NICHOLS CO.

Sun Typewriters \$40
Are surely best in the market
for the money.

The Best Copyholder \$2.50
Is the "MULTI-ANGLE" only

Business and Accounting
Cyclopedia \$10

GOODWIN'S BOOKKEEPING
Filing Cabinets Very Cheap

Loose-Leaf Ledgers, Price Books
and Binders

New Goods....

Embroidered Shirt Waist

Patterns

All-Over Laces

All-Over Embroideries

Colored Burlaps

L. Turner Co., Limited



LET THE HOME BEER BE PURE

Whatever you drink on the outside have only pure beer in the home. You are absolutely sure of

PRIMO LAGER

It is scientifically brewed from the finest hops and malt, properly aged, delightful in flavor and contains no preservative acids.

Order a case from your dealer or the brewery.

"A NERVE TONIC" and
"A HEALTHFUL BRACER"

"Tomato Nectar"

Is a blend of red, ripe Tomatoes and prime Extract of Beef, seasoned with choicest condiments and spices.

FOR SALE BY

Theo. H. Davies & Co., Limited

Monumental Work

Importers and Manufacturers Monumental Work in any material known to the trade

Iron and Wire Fencing
NEAT, REASONABLE AND DURABLE

IRON AND STEEL THE BEST MADE SAFES THE BEST MADE

Structural Iron, Lawn and Cemetery Furniture

Those TUBULAR STEEL, MITCHING POSTS are "safe things to tie to"

J. C. Axtell & Co.
HONOLULU

P. O. Box 642

Office and Works 1048-50 Alakea Street

SUPERVISORS MEET COUNTY BUSINESS.

Work of the March Session Promptly Disposed of—
Road Supervisors' Reports Approved—Action on
Purchase of Serrao Block Postponed—Aid For
Band—Communications, Petitions, Etc.

BOARD OF SUPERVISORS, TUESDAY.

The March meeting of the County Board of Supervisors was called to order at 10 a. m. Tuesday by President Moir; present, Supervisors Shipman, Fernandez, Makuakane, Desha and Kalaiwaa.

The reading of communications, petitions and reports occupied the day until about 1 o'clock when board adjourned till 9 a. m. Thursday. Action in matter of the improvement of Volcano and Ponehawai at their intersection was postponed by tabling the letter of Superintendent of Public Works Holloway, in which premission was granted to make improvements asked for by the Hilo Board of Trade. County Attorney Williams reported on his investigations of the charges against the deputy sheriff of North Kona. As the result of a visit to Kona, Mr. Williams had an examination of the signers of the petition asking for the deputy's removal. Mr. Williams found that the charges that the deputy was not physically able or mentally competent to fulfill the duties of his office, were not sustained; that with the exception of the first count in the charge that he had neglected his duties, the last charge was not sustained. Recommended that impeachment proceedings be indefinitely postponed. The county attorney had recommended some changes to the sheriff in the personnel of the police force in North Kona. Report was adopted.

A petition of voters of Waiakea asking that Piopio Street be repaired was referred to the supervisor of South Hilo.

Sheriff Keolanui submitted his report of criminal business for the month of February. The report showed that there had been 152 arrests during the month; 143 males, 9 females; 105 convicted, 15 committed; \$709, fines; \$133.65, costs; \$235, bail forfeited; total amount, \$1,077.65.

A report for the month of February of Road Supervisor Supe of Mountain View, Puna district, was read and ordered filed. The report stated that work with the rock crusher had been stopped by scarcity of water, but was about to resume; that there were \$200 coming to the road district from the general fund and that a pay roll had been made out for that amount; during the month men had been employed cleaning out ditches along the Volcano road; and cleaning out roads at Kaimu and Pahoa and around Kapoho and Pohoiki. Report was placed on file.

J. G. Lewis, road supervisor of North Kohala, reported \$449.39 expended between January 26 and February 25, the principal items being \$198.50 for repairing Mahukona road; for blasting, filling and constructing stone wall in repairing Waimea road, \$30; repairing Pali road from Honokahane-nui to top of Pololu, a case of powder and lot of materials being furnished by the Kohala Ditch Co., \$79; purchase of supplies and materials from Hawi, \$84.19.

N. K. Lyman, road supervisor for South Hilo, reported bills, for the month to the amount of \$1,322.34; principal items, painting and repairing Honouliuli bridge, \$150.69; repairing Kaiwika road, \$259.90 and road between Honouliuli and Kahali, \$143.25; repairing road between Honouliuli and Kelekele gulch, \$179; repairing Williams road, \$230.20; rock for crushing, \$124. Lumber for the Hakalau bridge is on the ground and the bridge is to be raised a foot above present grade. The Pepeekeo crusher is to be started up and the road to Kawaiwili gulch repaired. Williams street and Ponehawai street have been macadamized. The

Kukuan bridge was reported in bad condition and a concrete arch for same was recommended; estimates have been asked of Engineer Tom Cook on a concrete bridge for Papaikou. Ordered placed on file.

J. Kaelemakule, road supervisor for North Kona, reported \$145 as bills for February. Ordered placed on file.

Report of G. P. Kamaoha, road supervisor for South Kona, was referred to Supervisor Kalaiwaa.

Report of John Lanakila, road supervisor of South Kohala, showing disbursements of \$352.23, was ordered placed on file.

Report of B. N. Kahue for the North Hilo road district was submitted and ordered filed, reporting repairs to roads at Laupahoehoe, Maulua and Peleku; expenditures for same, \$295.90.

O. T. Shipman, a select committee of one to investigate the charges against George Kauwe, asking his removal as road supervisor of the district of Kau, reported the charges insufficient and recommended that the petition be not granted. Adopted.

A resolution containing rules in detail relative to the manner of filing claims against the county, introduced by S. L. Desha, was adopted. Under these regulations, demands must be filed in the office of the county clerk three days before the first Tuesday of each month to entitle them to immediate consideration.

THURSDAY MORNING.

The meeting was called to order by Vice-Chairman Woods, at 9 a. m. Thursday pursuant to adjournment.

Minutes of Tuesday's meeting were read and approved.

Taking up the business before the session, the report of county treasurer was read as submitted. The report showed a balance on hand in the general fund on Feb. 1, of \$24,866.97; January apportionment, \$11,000. By transfer to road fund \$25,000; warrants redeemed, \$5487.20; balance March 1, \$5379.77. Balance of road fund on hand Feb. 1, \$12,826.18; transfers from general fund \$25,000; warrants redeemed \$3,692.63; balance road fund on hand March 1, \$34,133.37.

Reports of Fish and Food Inspector were read and ordered placed on file. The February report showed 18,546 fish inspected, of which 490 were condemned. There were 81 varieties of fish received in Feb. and 95 varieties in Jan. out of 117 varieties known in the market. Eight poi shops were inspected in Feb., one of which was condemned.

The police committee reported, recommending the payment of claim of police officers for services during the month of February, which was adopted. The committee recommended that the salaries of Messrs. Kaiama, Kaailau, Coleman, Brown, Ewaliko, Konia, Nabakuelua, Yotaro, and Joe Cook, be increased, also recommended appointment of Jno. Kauakahi as truant officer for Hamakua, at a salary of \$35 per month.

Supervisor Fernandez, a special committee to whom a petition for a road in Hamakua was referred, reported that Mr. Walker, manager of Ookaia Plantation, agreed to give right of way, and recommended granting the petition; report adopted.

Report of finance committee, as submitted and adopted, recommended that claims against the road fund audited be paid, as follows:

District of South Hilo, \$3001.20; North Hilo, \$399.70; Hamakua, \$1464.60; North Kohala, \$551.14;

(Continued on Page Six.)

PLANTERS, ATTENTION!

SPECIAL ATTENTION IS CALLED TO THE FACT THAT

THE ONLY
ORIGINAL AND
CELEBRATED



FERTILIZER

Is that which has been manufactured for the past fifteen years exclusively by the

California * Fertilizer * Works

SAN FRANCISCO, CAL.

When purchasing be sure that in addition to the brand name of the California Fertilizer Works is on every sack, otherwise you will not be getting the genuine article.

A large stock of our Diamond A and our

XX HIGH-GRADE FERTILIZER

Is kept constantly on hand and for sale at San Francisco prices, plus only freight and actual expenses,

By Our Hilo Agents,

L. TURNER CO.
LIMITED

Canadian-Australian Royal Mail SS. Co.

Steamers of the above line running in connection with the Canadian Pacific Railway Company, B. C., and Sydney, N. S. W., and calling at Victoria, B. C., Honolulu, Suva and Brisbane, Q.; are due at Honolulu on or about the dates below stated, viz:

From Vancouver and Victoria B. C.	From Sydney, Brisbane (Q).
For Brisbane, Q., and Sydney:	For Victoria and Vancouver, B. C.
MOANA.....FEB. 10	AORANGI.....FEB. 7
AORANGI.....MARCH 10	MIOWERA.....MARCH 7
MIOWERA.....APRIL 7	MOANA.....APRIL 4

The magnificent new service, the "Imperial Limited," is now running daily BETWEEN VANCOUVER AND MONTREAL, making the run in 100 hours, without change. The finest railway service in the world.

Through tickets issued from Honolulu to Canada, United States and Europe For freight and passage, and all general information, apply to

Theo. H. Davies & Co., Ltd., Gen'l Agts.

TWO SPLENDID CLUB OFFERS TO CASH SUBSCRIBERS ONLY

By Special Arrangement with the publishers, the TRIBUNE is able to present to Cash Subscribers the following offers on monthly magazines in combination with the WEEKLY TRIBUNE.

THE TRIBUNE is the brightest, newsiest and most up-to-date weekly newspaper published in Hawaii, having a special wireless news service, thereby giving to TRIBUNE readers, up to the hour of publication on Tuesday morning of each week, the latest foreign and cable news, besides general local news.

The Combination Offers are open to new subscribers or renewals. Magazines may be ordered sent to one or several addresses, but orders under this combination offer must be accompanied by draft or postoffice money order.

Publisher's Price
\$2.00—Saturday Evening Post,
1.00—Ladies' Home Journal,
2.50—Hilo Tribune (Weekly) } **\$4.25**

Publisher's Price
\$3.00—World's Work,
1.00—Everybody's Magazine,
2.50—Hilo Tribune (Weekly) } **\$5.25**

Send in your orders right away.

HILO TRIBUNE PUBLISHING CO., Ltd.

Don't neglect your cough. Stop it at once and drive away all thought of consumption. Begin as early as possible—the sooner the better—to take

Ayer's Cherry Pectoral

the most effective remedy for coughs and colds of every kind and in every stage.

One of the most annoying coughs is a throat cough, where you have that constant tickling in your throat. It comes on worse at night, keeps you awake, and makes you have that smothered feeling in the chest. Ayer's Cherry Pectoral quiets the cough, makes breathing easy, and heals the lungs. There is no other remedy so surely to be relied on.

There are many substitutes and imitations. Beware of them and of so-called "Genuine Cherry Pectoral." Be sure you get AYER'S Cherry Pectoral.

Put up in large and small bottles.

Prepared by Dr. J. C. Ayer & Co., Lowell, Mass., U.S.A.
For Sale by HILO DRUG COMPANY

HILO MARKET CO., LIMITED.

Telephone No. 39.

SHIPMAN ST. HILO, H. I.

Choice Cuts of

**Beef, Mutton,
Pork, Veal.**

POULTRY of all Kinds

FRESH ISLAND BUTTER

**Fine Fat Turkeys.
Sucking Pigs.**

Oceanic S.S. Company

Time Table

The steamers of this line will arrive and leave this port as hereunder:

FROM SAN FRANCISCO.

Sierra.....January 31

Alameda.....February 9

Sonoma.....February 21

Alameda.....March 2

FOR SAN FRANCISCO.

Sierra.....January 9

Sonoma.....January 30

Alameda.....February 14

Ventura.....February 20

Alameda.....March 7

In connection with the sailing of the above steamers the agents are prepared to issue, to intending passengers **Coupon Through Tickets** by any railroad from San Francisco to all points in the United States, and from New York by any steamship line to all European ports. For further particulars apply to

Wm. G. Irwin & Co.

LIMITED
General Agents Oceanic S. S. Co.

PAY FOR THE BEST IT'S CHEAPEST

AND THAT'S THE CLASS OF WORK EXECUTED BY

**CAMERON
THE PLUMBER**

FRONT ST., OP. SPRECKEL'S BLOCK

Real Reform.

The thorough and consistent prosecution by the administration of dishonest graft and fraud in the postal service and in the national land department is approved by the Springfield Republican, a newspaper as ready to criticize as to praise the highest in office according as facts seem to demand. After stating the case, it says:

"It is to be said for this president, in other words, that under him the public service is receiving a distinct toning up in honesty, zeal and efficiency. Back of the many spectacular performances of the Roosevelt administration which most engage popular attention, there has been no small achievement in the way of those commonplace reforms that yield no glory to any one, but are none the less essential for the preservation of a tolerable government. If the president has not always been the directing force in these homelier undertakings, it is to be said for him that he has shown a spirit which has encouraged effort on the part of others. His official inheritance was a situation of complacent drift in the administration of the government where, beneath the sunny surface of an optimistic neglect, graft and plunder were working their way into every avenue of the public service. And he did not hesitate to let the lid come off because the revelations to appear would injure only his own party. Let this be said to the everlasting credit of President Roosevelt."

Waste Water Power.

On the island of Hawaii great volumes of spring water are flowing into the sea continuously. This is an enormous waste of power and it is regretted that the value of this generous action of nature is not utilized. According to Export, the organ of the Central Union for Commercial Geography of Germany, Sweden is planning to use every ounce of water now going to waste over her falls and in her rivers for electricity. Engineers are in the hills making surveys, and capital is getting ready for the call that is sure to come just as soon as the surveys are completed. The same may be said of Norway, where the waters have short distance to run, but often of tremendous volume. In Sweden the power will be put to work in all manner of mills. In Norway it will be used in the iron and copper mines. American capitalists are backing the movement in Norway. Every sugar mill, every railroad and every electric lighting plant on the island of Hawaii can be made operative by water power. Kauai has initiated the system, which is going to cheapen sugar production on some of the large plantations of that island. There is enough energy in the small stream of Nuuanu valley to turn many industrial wheels in Honolulu.—Paradise of The Pacific.

Political Talk.

Current political talk boils down to the following partial prospectus: If Kuhio runs for Delegate to Congress he will receive the support of all parties. If Kuhio does not run, A. G. M. Robertson and Judge Kopoikai may be out for the nomination on the Republican ticket, Laukea on the Democratic ticket, and Nottley on the Home Rule ticket. Kuhio will probably run.

For Sheriff of the Country of Oahu, A. M. Brown has good chances for nomination on the Republican ticket. Others shaping things for the office are W. T. Rawlins and Clarence Crabbe.

If Kuhio runs for Washington Delegate, Curtis Laukea will run for Supervisor-at-Large.

There will be no fusion between the Democrats and Home Rulers, it is said. The Hawaiian Democrats and the Home Rulers are solid for Kuhio for Delegate. It is not known what the haole Democrats will do. There is going to be a lively mix-up in the country campaign. Most of the political talk these days has to do with Country politics.

Subscribe for the TRIBUNE. Subscription \$2.50 a year.

Rheumatism Can Be Cured.

There is no disease which inflicts more torture than rheumatism and there is probably no disease for which such a varied and useless lot of remedies have been suggested. To say that it can be cured is therefore a bold statement to make but Chamberlain's Pain Balm, which enjoys an extensive sale in this country, has met with success in the treatment of this disease wherever it has been tried. One or two applications of this liniment will relieve the pain and hundreds of sufferers from this disease testify to permanent cures by its use. For sale by Hilo Drug Co.

TO LET

Rooms and Cottages To Let

APPLY TO

L. SEVERANCE

Front St., next to Cameron's

To Shippers.

All freight sent to ships by our launches will be charged to shippers unless accompanied by a written order from the captain of vessels.
30tf R. A. LUCAS & CO.

GO WHERE YOU WILL

YOU WILL FIND THE
**SWELLEST
SMARTEST
SLICKEST
STRONGEST
SUITS**

AT

GOO HOO'S

THE TAILOR
FRONT STREET, HILO

THE FIRST BANK OF HILO LIMITED.

Incorporated Under the Laws of the Territory of Hawaii.

CAPITAL, \$200,000.

PEACOCK BLOCK, HILO.

C. C. KENNEDY.....President.
JOHN T. MOIR.....1st Vice-Pres.
H. V. PATTEN.....2nd Vice-Pres.
and Managing Director
C. A. STOBIE.....Cashier.
P. S. LYMAN.....Secretary.

DIRECTORS: John J. Grace,
A. Lindsay,
Wm. Pollar, W. H. Shipman.

DRAW EXCHANGE ON

Honolulu
San Francisco
New York
Chicago
London
Hongkong
Yokohama

SAFE DEPOSIT BOXES

Rented by the Month or Year. Particulars on Application.

MATSON NAVIGATION CO.

Direct Line between San Francisco and Hilo, comprising the

A1 Steamer Enterprise

And the following Fast Sailers:

Ship FALLS OF CLYDE
Bark RODERICK DHU
Bark ANNIE JOHNSON

And other Specially Chartered vessels make this trip with at least one of these boats each month, carrying both Freight and Passengers.

For dates of sailing and terms, Call upon,

Jno. D. Spreckels & Bros. Co., Agents,
327 Market St., San Francisco.

G. H. PIERCE, Agent, HILO, HAWAII
Office at Matson Navigation Co's Warehouse, Waikaeae. Tel. 86 L

CRESCENT CITY BARBER SHOP

CARVALHO BROS., Proprietors.
The Old Reliable Stand is still doing
UP-TO-DATE WORK
Razors honed, Scissors and all edged tools perfectly ground.—Satisfaction Guaranteed.
WAIANUENUE STREET
Second Door Above Demosthenes' Cafe

WM. G. IRWIN & CO., Ltd.

Sugar Factors, Commission Agents

Sole Agents

National Cane Shredders,

Baldwin Locomotives,

Alex Cross & Sons' Sugar Cane and Coffee Fertilizers

Waikaeae Boat House

R. A. LUCAS & CO., Prop'rs.
WAIKAEAE BRIDGE, HILO
HAVE NOW A FLEET OF

Gasoline Launches and Small Boats

FOR PUBLIC HIRE
Passengers and baggage taken to and from vessels in the harbor at reasonable rates. Launches and rowboats to hire for private picnics and moonlight rides.
RING UP ON TELEPHONE

Wolverine Gasoline Engine

Self-starter and reversible engine. In practicability it is equal to the steam engine. Sizes from 1½ h. p. upwards. Boats fitted with this engine or frames of any size to order. For particulars apply to R. A. LUCAS' Manager

WAIKAEAE SALOON

Wharf Road, Second Door From the Bridge.

Fresh Cooling Primo

FINEST BRANDS

**Wines
Liquors
Beers**

SCOTCH AND AMERICAN WHISKIES

and

European Wines

Draught and Bottled Beer

While the Agents of many Life Insurance Companies are petitioning their Officers for the ANNUAL DIVIDEND policy, it is a source of great satisfaction to the Policyholders of the Pacific Mutual to know that their Company has been issuing almost nothing else for years.

No petitioning necessary for liberality with the good old Pacific Mutual.

The Directors of the Company are by the California law made jointly and severally liable for all monies EMBEZZLED or MISAPPROPRIATED by the officers during the term of office of such Director. Quite a provision from the SECURITY STANDPOINT, considering what has recently occurred.

The best policies are issued by the best Company on Earth for policyholders.

THE PACIFIC MUTUAL LIFE INS. CO. OF CALA.

CLINTON J. HUTCHINS,
General Agent,
920 Fort Street.

H. E. PICKER,
Traveling Representative.

FOR TABLE USE

The Leading Brands of
**Rhine Wines
Liqueurs and Mineral Waters**

ARE UNEXCELLED

Marie Brizard & Rodgers'
Brands and Liqueurs

Usher's Celebrated Scotch Whiskey
O. V. C. Special Reserve
The Most Popular in the Islands

Kinderlin's Freebooter Gins
The Finest Put on the Market

Pabst Beer
A. B. C. Beer

In Quarts and Pints, in Casks and Cases and by the Dozen

Mineral Waters, White Rock and Ginger Ale

W. C. PEACOCK & CO. Ltd.

WHOLESALE DEALERS
PEACOCK BLOCK, HILO

THE HILO TRIBUNE'S MAIL CHART

MARCH, 1906.

MAILS ARRIVE IN HONOLULU AND DEPART AS FOLLOWS:

S.	M.	T.	W.	T.	F.	S.
				1	Alameda 2	3
					*Korea	
4	5	*Doric 6	*Mowera 7	8	Nebr'skan 9	Aorangi 10
		*Alameda				
11	12	*Coptic 13	*Ventura 14	*Manch'a 15	16	17x
Nebr'sk'n		*Sierra		H.K. Maru	Alameda 23	24
18	19	20	21	22	*Siberia	
25	26	27x	28	*Korea 29	Nevadan 30	*Am-Maru 31
			*Alameda			

Vessels whose names appear OVER the date ARRIVE from the Coast. Vessels whose names appear BELOW the date DEPART for the Coast. Destination of Vessels—(*) To San Francisco; (†) To Colonies; (‡) To Victoria; B. C.; (§) To Yokohama. S. S. Kinau departs from Hilo for Honolulu every Friday at 10:30 a. m. S. S. Mauna Loa's mail closes in Hilo on Saturdays and Tuesdays marked (x) at 2:15 p. m., arriving in Honolulu at daylight three days later.

INSURE YOUR PROPERTY...

In a Reliable Insurance Company

We are the Resident Agents for the

Guardian Assurance Co. of London
Phoenix of Hartford, Conn. and
Svea of Gothenburg, Sweden

H. HACKFELD & COMPANY, Ltd.

The Old Buggy...

made new for a few cents and a little labor. With

**THE
SHERWIN-WILLIAMS
BUGGY PAINT**

you can paint and varnish at the same operation. You will be surprised how easy it is to renew vehicles. Let us show you color cards.



SOLD BY

HILO MERCANTILE CO. LIMITED.

SOLE AGENTS FOR HAWAII

P. O. Box 94

Telephones 4 A, 4 B

RING UP 'PHONE 21

FOR PRICES ON ALL KINDS OF PRINTING

LATEST STYLES AND FAIR PRICES

CONDENSED LOCAL ITEMS

Subscribe for the TRIBUNE. Subscription \$1.50 per year.

Miss Juanita Beckley arrived by the last Kinau.

H. E. Cooper, of Honolulu, was in Hilo during the week.

School street is at present the scene of sewer construction.

Land Commissioner Pratt, of Honolulu, was in Hilo last week.

The walls of the county jail under construction are rising rapidly.

Mr. Albert Horner, foreman of the grand jury, has returned home.

D. Conway, of Honolulu, representing T. H. Davis & Co., is in the city.

John H. Fuller, representative of the Honolulu Iron Works is in the city.

Judge H. S. Rickard, of Laupahoehoe, was a Hilo visitor during the week.

Mrs. R. T. Forrest, of Kau, has been visiting in Hilo during the past week.

The band gave an excellent performance at the hotel grounds Friday night.

R. T. Forrest made a flying trip to Hilo Saturday, meeting his many friends about town.

Judge E. W. Barnard returned home to Laupahoehoe by the last Kinau from Honolulu.

Mr. H. E. Kelsey arrived home from Honolulu last Sunday by the steamer Claudine.

Whitman's Candies—L. Turner Co.

The piano club will meet with Mrs. L. Severance this week Wednesday afternoon at 3 o'clock.

Mr. Jas. B. McSwanson, representing the Honolulu Bulletin, is in Hilo working in the interest of that paper.

Judge G. W. A. Hapai, Mr. J. T. Baker and Mr. W. C. Berden returned from Honolulu by last week's Kinau.

Rev. O. H. Gulick and wife of Honolulu are visiting in Hilo, the guests of Mrs. L. Severance. They return by Friday's Kinau.

Preliminary plans for the construction of the new Masonic Block have been adopted and are to be sent away by this mail for elaboration by architects.

A package containing a white cotton crepe skirt was lost on the road between Hilo and Wainaku. Suitable reward will be given on return to TRIBUNE office.

G. W. Lockington will receive per arrival of steamer Arizonian, direct from the Oregon Furniture Co., a nice line of bedroom suites, buffets, etc., all new designs.

Fire at the residence of J. H. Maby on Pleasant Street was put out by the men employed in sewer construction at work near. The fire department was called out but its services were not required. Slight damage was done.

Mrs. Lewis, who has been visiting at the home of her brother, W. T. Balding, will leave on the Kinau this week to join her husband, Capt. Lewis, U. S. A., who arrives from Manila on his way to Santa Barbara, Cal., where they will be located.

E. H. Paris, secretary, and T. A. Burrougham, traveling salesman of E. O. Hall & Son, Honolulu, arrived in the city Saturday and will return by Friday's Kinau. They came overland from Mahukona in their Cadillac auto, making a record run.

A gentleman who visited Onomea this week reports wonderful progress made on the new mill. He stated that a surprising amount of work had been done, indicating that Manager Moir and Engineer Cant had been prosecuting work very vigorously.

If you wish your coffee to bring the highest market prices let the Hilo Coffee Mill clean, classify and place the same on the market for you. Liberal cash advances made on shipments.

J. F. D. Paine, head of a well-known furniture house in Boston, now retired, and his daughter, were guests of Mr. and Mrs. C. C. Kennedy Wednesday night on their way to the volcano. They returned Friday, having enjoyed the trip thoroughly. Mr. Paine was greatly impressed with the island of Hawaii.

Some people fatten their bump of wisdom on ten cent candies, thereby favoring the pines and chastising their stomachs at the same time, killing two birds with one dime. Buy your candies at the Hilo Candy Co. and you won't have any stomach troubles.

C. M. Cook, of Honolulu, president of the Bank of Hawaii, came up on the last Kinau to meet the directors of the First Bank of Hilo. As a result of the meeting close relations were established between the two institutions. Mr. Cook was the guest of C. C. Kennedy while in the city and went out to Onomea Thursday on a visit to the plantation.

Whooping Cough.

The quick relief afforded by Chamberlain's Cough Remedy in cases of whooping cough, makes it a favorite with the mothers of small children. This remedy liquefies the tough mucus, making it easier to expectorate, keeps the cough loose and counteracts any tendency toward pneumonia. For sale by Hilo Drug Co.

Boru.

GRUE—On March 7, 1906, to the wife of G. H. Gere, a son.

Whitman's Candies—L. Turner Co.

A. H. Jackson returned to Honolulu by last Kinau.

Special sale of ribbons at half price at E. N. Holmes.

Mr. R. D. Junkin, of Glenwood, was a Hilo visitor Saturday.

Attention is called to the ad of the Honomu Meat Market.

Supervisor Frank Woods and wife returned home to Kohala by Friday's Kinau.

Elsewhere in this issue will be found "By Authority" notices of the Board of Supervisors.

Mr. F. W. Milverton is in Hilo representing the prosecuting attorney in the business now before the circuit court.

Albert McGurn, who has been acting as jailer in the absence of J. H. Maby, will return to Honolulu by Friday's Kinau.

Send me \$1.00 and receive the Delinquent for one year. It contains all the latest fashions which you can have sent you by the telephoning 178, E. H. Moses.

L. A. Andrews was a passenger on the Kinau Friday for Waiakoa. It is reported that he has gone to accept the position of manager of the Parker ranch.

Co. D sent down 48,000 votes on the automobile by last Kinau and is making a lively race. The company is Hilo's applicant for the auto and should have everybody's votes here.

Whitman's Candies—L. Turner Co.

Co. D had had official notification from headquarters that the annual inspection will occur on March 22, and will be conducted by Major R. C. Van Vliet. The inspection is to be of the company in heavy marching order followed by a drill.

Why not improve your office convenience and save time by using a "Writing In Sight Typewriter." See the L. C. Smith & Bro.'s typewriters which E. H. Moses is selling, and change your old "blind writer" for one. Equipped with two color ribbon and any characters you wish.

Fine Candies and Confectionary, "that's our business." To get one hundred cents' worth for a dollar, "that's yours." Let's get together. Buy your candies from us and save money—Hilo Candy Co. Waiakoa Street.

Mrs. Edyth Tozier Weathered has traveled much over the United States; has seen all the expositions, some of them in the employ of the State of Oregon, and has attended national conventions of various kinds everywhere. She has written much for publication, and purposes writing of her Hawaiian trip. She says her party has been royally entertained at Honolulu, but that the party would rather have missed the rest of the trip, than the visit to the island of Hawaii and the volcano.

Damage by Wind and Flame.

A severe wind storm sprang up Wednesday doing some damage in certain localities. Onomea gulch seems to have received the full force and six high flames were blown down, at an estimated loss of \$30,000. On the afternoon of Wednesday, a fire started by settlers at the upper end of the plantation spread and some 40 acres of cane belonging to Japs was burned. All the plantation hands were turned out to fight the flames and no further damage was done. Between wind and fire the plantation was treated to quite a combination of the unusual.

A Flying Trip.

A trip to the Volcano House was made Saturday morning in time that was never before approached and that is not likely soon to be equalled. Bruce Kennedy left the residence at Waiakoa at 6 o'clock with his motor-cycle, rode to the Volcano House and registered at the hotel and returned, arriving home at 10:45; distance 33 miles and return; climb of 3900 feet; time 4 hours, 45 minutes.

First Foreign Church.

Sabbath, March 18, 1906, 11 a.m.—"What doest thou here Elijah?" I Kings 19:13. 7:30 p.m.—"All the counsel of God," Acts 20:27.

Married.

Mr. Allen Wall, of Hilo, and Miss Lillioe Roy, of Kealahou, were married on March 1.

A MATTER OF HEALTH

ROYAL

BAKING POWDER

Absolutely Pure

HAS NO SUBSTITUTE

ROYAL

BAKING POWDER

Absolutely Pure

HAS NO SUBSTITUTE

ROYAL

BAKING POWDER

Absolutely Pure

HAS NO SUBSTITUTE

ROYAL

BAKING POWDER

Absolutely Pure

HAS NO SUBSTITUTE

ROYAL

BAKING POWDER

Absolutely Pure

HAS NO SUBSTITUTE

ROYAL

BAKING POWDER

Absolutely Pure

HAS NO SUBSTITUTE

ROYAL

BAKING POWDER

Absolutely Pure

HAS NO SUBSTITUTE

ROYAL

BAKING POWDER

Absolutely Pure

HAS NO SUBSTITUTE

ROYAL

BAKING POWDER

Absolutely Pure

HAS NO SUBSTITUTE

ROYAL

BAKING POWDER

Absolutely Pure

HAS NO SUBSTITUTE

ROYAL

BAKING POWDER

Absolutely Pure

HAS NO SUBSTITUTE

FOREST FIRES IN HAWAII.

Started in Jap Clearing, Carried by High Wind Over Wide Area.

Fire, started by Japanese clearing land below Mana, Hamakua district, was carried into the timber by the high wind that sprang up suddenly and before being stopped by the rain that fell Tuesday night, had swept over an area eight or more miles in extent in each direction. It extended from Honokaa homestead to Paauilo. No damage was done excepting the destruction of some cattle range, the timber not having been much injured, as it is believed. This burned district is on the Parker cattle ranch and better cattle range may result from the burning out of the undergrowth.

Haworth Prospering.

L. W. Haworth, formerly editor of the TRIBUNE, writing under date of Feb. 11 from Manhattan, Nev., to friends in Hilo, states that on Jan. 10 he began publication of the "Mail" at that place. Manhattan, he says, is a typical boom mining town full of good opportunities to make money of which he has not been slow to take advantage. Christmas there were 21 tents in the town; now it has built up nine blocks long on both sides of the street, the hillside dotted with tents, and lots have risen from \$500 to \$3500 in price. The boom is founded, he says, on valuable mining property and next summer a big rush is expected. He says Manhattan is the greatest place in America to "Get there Eli" in for making money. There are also very profitable sure thing propositions in raising alfalfa and potatoes around the camps of Tonopah, Bullfrog and Manhattan. He started the publication of the "Mail" on Jan. 10, has subscribers from all parts of the country and more job work than he can handle. He has also organized the A. L. Smith Co. to engage in the business of handling mining properties and stocks.

No Transportation by Transports.

Another letter of the discouraging sort dealing with the request made by the board of Education, that teachers wishing to attend summer schools on the coast be given passage in army transports, has been received by Superintendent Babbitt from Quartermaster General Humphreys. In spite of these rebuffs the matter has not yet been given up, however.

A private letter received from Delegate Kuhio by one interested says:

"Owing to the fact that the transport service is under constant fire in Congress and is only retained by a very narrow majority, the Secretary of War is obliged in self-defense to enforce some rules in regard to their use which he would gladly change if he only thought it could be done without wiping out the service itself. This fact will make it extremely hard to get favorable action which would mean so much to us."

Kinau Departures, March 12th.

N. G. Santos, A. H. K. Vierra, Miss J. Kaihenui, Mrs. W. G. Kaihenui, Miss A. Sullivan, Miss E. J. Rann, Miss F. C. Harrington, Mrs. J. Gribble, J. M. Thompson, J. L. Thompson, H. T. Vass, Mrs. H. T. Vass, M. A. Vass, J. H. Ryan, T. Ryan, Mrs. J. H. Ryan, Miss N. Ryan, T. J. Wood and wife, B. C. Lattin, Mr. Paine, Mrs. Mc Mullen, Miss Paine, Samuel F. Smith, W. F. Logan, Harry P. Kaohi, N. C. Willifong, H. E. Cooper, Cyrus Willard, J. W. Mitchell, E. J. Waddell, A. A. Jackson, Miss M. Kleemann, Mrs. Perry, Dr. Judd, O. Browne, Dr. S. R. Mc Donagh, J. A. Mc Donagh, E. P. Lone, J. H. Wood, Mrs. N. L. Bixby, Mrs. M. A. Cunningham, Mrs. S. B. Davidson, J. W. Pratt, Mr. Howard, Miss V. W. Cunningham, Mrs. L. Hamlen, Miss Howard, Miss M. Shipman, Mrs. L. A. Thurston, Miss C. Shipman, C. M. Cooke.

To Plant Addition.

The Makaoku tract of about 23 acres opposite Coconut island, on which the lease expired about a year ago and which is now held by numerous individuals as tenants at will, will be platted into town lots as soon as possible after the transfer of the property from the Public Works department to the Land Department is effected. It is the intention to reserve Kainehe point as a part naturally belonging to Coconut island. These lots will be open for settlement, on long term payments, to actual residents.

Officers Elected.

At the annual meeting of the Young Men's Republican Club held last Tuesday evening the following officers were elected: J. D. Lewis, president; Rufus A. Lyman, Jr., first vice-president; John Kai, Jr., second vice-president; A. A. Hapai, recording secretary; W. H. Beers, corresponding secretary; I. E. Ray, treasurer; J. P. Hale, sergeant-at-arms. The executive committee consists of the officers elected.

Bas or many years back, and was well known.

Lost.

A surgical bag and contents between Hakalau and Honohou. Finder please return to Dr. Fred Irwin, Hakalau. Suitable reward.

Meeting Notice.

Hawaii Chapter No. 1, O. E. S., Hilo, Hawaii. Regular meeting of above Chapter will be held on Monday evening, March 19th, at 8 o'clock. Visiting members are cordially invited to attend.

Honomu Meat Market

Choice Beef, Mutton, Veal, Pork, Hams, Bacon, Corned Beef, Sausages, Tongues, Butter delivered to Pepekeo, Honomu and Hakalau Free of Expense.

J. R. GOMES, Mgr.

Telephone 88 F HONOMU

Notice.

At the annual meeting of the stockholders of the Volcano Stables and Transportation Co., Ltd. held at their office on Saturday, February 17, the following officers were elected for the ensuing year:

C. C. Kennedy President
J. A. Scott Vice President
A. M. Wilson Secretary
Chris. Castendyk Treasurer
E. N. Holmes Auditor
J. T. Moir Directors
A. Lindsay }
A. M. WILSON, Secretary.

LEGAL NOTICES.

In the Circuit Court of the Fourth Circuit, Territory of Hawaii.

AT CHAMBERS—IN PROBATE.

In the matter of the Estate of Umayo HONGO, deceased.

ORDER OF NOTICE OF HEARING PETITION FOR ADMINISTRATION.

On reading and filing the petition of Sode Hongo, wife of Umayo Hongo, alleging that Umayo Hongo, of Hilo, Hawaii, died intestate at Hilo, Hawaii, on or about the 16th day of February, A. D. 1906, leaving property within the jurisdiction of this Court necessary to be administered upon, and praying that Letters of Administration issue to Yoshizo Hongo. IT IS ORDERED, That Tuesday, the 14th day of April, A. D. 1906, at 10 o'clock a. m., be and hereby is appointed the time for hearing said petition, in the Court room of this Court, at Hilo, Hawaii, at which time and place all persons interested may appear and show cause, if any they have, why said petition should not be granted.

IT IS FURTHER ORDERED, That notice of this Order be published three successive weeks in the Hilo Tribune, in Hilo, Hawaii, T. H.

Dated Hilo, Hawaii, March 9th, 1906.

CHARLES F. PARSONS, Circuit Judge.

Attest: A. S. LEBARON GURNEY, Clerk.

By Chas. Hitchcock, Deputy Clerk.

C. R. S. SMITH, Attorney for Petitioner.

Notice to Creditors.

Notice is hereby given that the undersigned has this day been appointed Administrator of the Estate of Al Wo, deceased, late of Puna, and has qualified as such Administrator. All persons having debts or claims against the said Estate are notified that said claims must be presented to the undersigned, properly verified, within six months from the date hereof, or they will be forever barred.

(Signed) L. AHIP, Administrator.

Hilo, Hawaii, February 20, 1906.

CARL S. SMITH, Attorney for Administrator.

HILO PINEAPPLE CO.

The prospectus of the above Company has been issued and generally distributed. Persons in search of a good home investment are invited to investigate this opportunity.

Those desiring to take an interest in the Company are requested to enter their subscriptions before March 15.

L. A. ANDREWS, P. O. Box 251 Hilo, Hawaii

Souvenirs of Hawaii

Photo Postals

Of the choicest bits of scenery on the island—plain or colored.

Complete stock of Photo Supplies, Films and Plates.

Orders and

Negatives developed and Prints Made.

The Hilo Drug Co.

SPRECKELS' BLOCK

AROUND THE CORNER FROM THE HOTEL

A Partial List of Dry Goods Received by last "Enterprise" at E. N. Holmes

Flannelette	Black Cashmere
White Canton Flannel	Knitting Silk
Fruit of the Loom Cotton	Armlets
Pequot Sheet, 5-4, 6-4, 8-4, 9-4, 10-4	White Silk Belts
Pequot Sheets, 72x90 and 81x90	Linen Thread
Blue Denim	Darning Cotton
Unbleached Drilling	Men's Half Hose
Outing Flannels in Pink, Blue, Cream and White	White Flannel—all wool
Cotton Batts	Sateen—all colors
Black Velvet Ribbon—all widths	Lining Cambrics
Cotton Birdseye	Pajamas
Mousseline de Soie	Sweaters
Persian Lawn	Lace Binding
India Linon	All-over Lace
Dimity—white and printed	Pearl Buttons—large size
Bed Spreads	Children's Underwear
Floss Sofa Pillows	R. & G. Corsets
Figured Pillow	Turkey Red Prints
Ladies' Hose	A. F. C. Gingham
Children's Hose	Manchester Chambray
Ladies' Silk Gloves—white and black	Printed Lawns—black and white
Plain and Fancy Ribbons	Heavy Shirting Cheviot
Baby Ribbon	Plain Scrim
Binding Ribbon	Men's Hats
Canvas Stiffening	Rubber Overshoes for Men and Women
	Tennis Oxfords for Men and Boys
	Shoe Dressing

...Prices Always the Lowest...

E. N. HOLMES

A Life Income The Best Legacy

MARSHALL BROTHERS Manufacturers of Manila and Wrapping Paper YORKLYN, Del., Nov. 17.

Manager The Mutual Life Insurance Co. of New York.

Dear Sir: I have received policy for \$20,000, issued to me in favor of my daughter on the continuous installment plan.

My daughter is but eighteen years of age, and this contract guarantees to her \$1,000 at my death, and \$1,000 per annum as long as she lives, and to pay not less than twenty installments even if she should not live twenty years after my death. The reason I am so much pleased with this policy is based upon the fact that I fully realize, that no matter how much money I might leave my daughter at my death I would have no guarantee that it would last her through her entire lifetime.

The Company's liability under this form of contract might be \$50,000 or possibly \$70,000, if my daughter should live to be as old as some of her ancestors.

Yours very truly, ISRAEL W. MARSHALL.

WRITE TODAY FOR RATES.

The Mutual Life Insurance Company of New York
W. A. WANN, Dist. Supt. Honolulu, T. H. B. C. MELLOR, Resident Agent Hilo, T. H.

THE HENRY WATERHOUSE TRUST CO. LIMITED.

Agents
London Lancashire Fire Ins. Co.
National Fire Insurance Co.
Niagara Fire Insurance Co.
German-American Fire Ins. Co.
Pennsylvania Fire Insurance Co.
United States Fidelity Guaranty Co.
Continental Casualty Co.

H. VICARS, - - Hilo Representative

DEMOSTHENES' CAFE

Comfortable Rooms ... Hot and Cold Baths ... A Well-Stocked Buffet ... Mixed Drinks and Fine Wines ... A Cold Storage Plant on premises with all the Delicacies of the Season ... Open Till Midnight

WAIANUENUE STREET, HILO
CUISINE UNEXCELLED FIRST-CLASS SERVICE

NECESSITIES.....

A housekeeper telephoned the market for supplies, in which she included a pound of liver. Later, deciding she didn't want the liver, she phoned again, to that effect. Before she hung up the receiver she heard the butcher say to someone in the shop: "Poke out Mrs. Baker's liver, she can get along without it."



No more shoes for you? They're built for service. Call and see them at the shoe specialists—

Economic
SHOE CO. HILO

Get a Ticket with Every Purchase

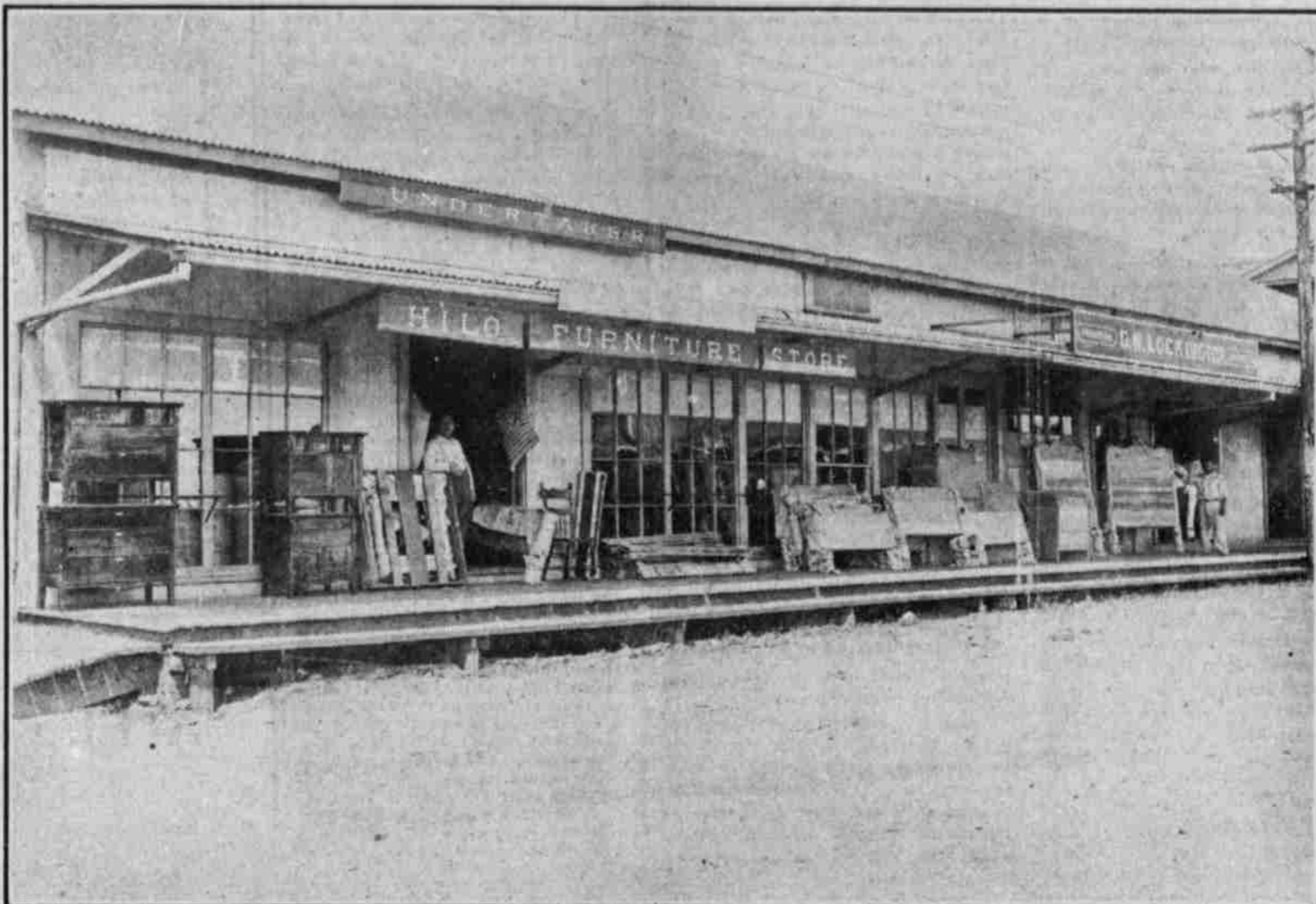
HILO FURNITURE STORE

Established 1892

Furniture, Upholstery and Undertaking

Established 1892

Wood, Cane and
Leather Seat
Dining Chairs
Extension Tables
Buffets and
Sideboards
Bookcases
Desks of all Kinds
Rockers
Parlor Suits
Lounges



Matresses, Pillows
Spring Beds
Bedsteads
Bureaus
Chiffoniers
Washstands
Bedroom Suits in
Oak, Birdseye
Maple and
Mahogany
Matting and Rugs
Toilet Sets



G. W. LOCKINGTON Front Street



Almost immediately
after taking Ayer's
Sarsaparilla you begin
to feel its cleansing,
strengthening, and purifying
power.

You feel that your depression is
passing away; your brain clears up;
things look brighter; sleep is refresh-
ing; the nerves act better; and new
life and vigor begin to take possession
of your whole system. Your diges-
tion improves; you get more benefit
from your food; your appetite returns.
Your friends begin to notice a marked
change in your general appearance.
The old color comes back to the lips;
the eyes look brighter; the step be-
comes more elastic; and every dose of

Ayer's Sarsaparilla

promotes the return of good health.
Those who suffer from the debili-
tating effects of a warm climate will
find in Ayer's Sarsaparilla just what
they need to bring back the old force,
vitality, and energy.

There are many imitation
Sarsaparillas.

Be sure you get "AYER'S."

Prepared by Dr. J. C. Ayer & Co., Lowell, Mass., U.S.A.

AYER'S PILLS, the best family laxative.

For Sale by HILO DRUG COMPANY!

Hilo Electric Light Co., Ltd.

Houses Wired and
Lights Installed

In accordance with the rules of the Na-
tional Board of Fire Underwriters.

A complete stock of
ELECTRICAL SUPPLIES
Fixtures, Shades, Table, Bed and Desk
Lamps, etc., always on hand.

Fan Motors \$15
Fan Motors, swivel frame 18
Sewing Machine Motor 20

Power for operating them \$1 a month
Installation charged extra.

Estimates furnished on all classes of
Electrical Work and Contracts taken to
install apparatus complete.

SUPERVISORS MEET COUNTY BUSINESS

(Continued from Page Three)

South Kohala, \$357.23; North
Kona, 294.85; South Kona, \$270;
Kau, \$51.41; Puna, 967.59.
Demands against the county
amounting to \$473.85; examined
and found correct, were approved
for payment.

A resolution, introduced by
supervisor Fernandez, was adopted
to the effect that the salary of
deputy county attorney be
one hundred and twenty-five
dollars per month.

A blank from of demand on the
county treasury for supplies was
adopted on recommendation of A.
Fernandez.

Under a resolution introduced
by supervisor Desha, the resolution
of August, 1905, making the Ha-
waii Herald the official county
paper, was repealed and annulled.
This was followed by a resolution,
also introduced by Supervisor Desha,
that a standing committee of three
members be appointed as a printing
committee whose duty it will be to
order and place all county printing.
The resolution was passed unani-
mously.

Supervisor Fernandez brought up
the matter of the purchase of the
Serrao block, offered for sale to the
county by the owner at the January
session. Action on the proposition
was postponed until the next ses-
sion, when a full attendance of the
Board should be present.

A communication to the County
Clerk, Sam K. Pua, from D. Kalau-
okalani, clerk of Oahu County, was
read, suggesting that Mr. Pua go
to Honolulu for a personal investi-
gation of the method in vogue in
the Secretary's office in conducting
elections. Mr. Fernandez opposed
the proposition as an unwarranted
expense and held that from the
Hilo printing offices, and county
clerk and county attorney all neces-
sary information could be obtained.

The Board went into the com-
mittee of the whole with Mr. Fer-
nandez in the chair to consider the
request of Band master Carvalho
for an increase of \$165 a month for
the support of the band. Professor
Carvalho, Mr. Pacheco and Mr.
Kelsey addressed the committee and
fully explained the needs of the
band and the better service the
public would receive as a result of
the increased support; stating also
that the appropriation was neces-
sary for the existence of the band.

Mr. Shipman was willing to give
his personal support to the finances
of the band, and thought the organ-
ization should be supported by
private subscription, and would
favor appropriation of public money
for its support only as a last resort.
Others expressed opinions that the
band was a public utility and helped
to make Hilo attractive to tourists,
that the public derived the benefit
and the expense should be borne
by the public. Mr. Desha quoted a
passage from Scripture seriously
and appropriately during the dis-
cussion, while Mr. Kalawaa in
some way nearly got the Board
mixed up in a political discussion
foreign to the question of music.
The committee rose and reported
favorably on the petition and the
same was granted, with a proviso
that no moneys appropriated for
band purposes be loaned by the
band, Shipman voting against the
motion.

Ordinance No. 1 was amended
by inserting the words, "or news-
papers," after the word "news-
paper" in section three thereof.

AFTERNOON.
Reconvening at 2 o'clock p. m.
Supervisor Makuakane asked con-
sideration of his resolution to ap-
propriate a maximum amount of
\$700 out of the Puna road fund to
construct a telephone line from
Kapoho to Kalapana and the same
was adopted unanimously.

A resolution was adopted to pay
\$350 out of the Hamakua road
fund to J. Kanakahi for services as
truant officer.

A resolution introduced by Mr.
Makuakane for the appointment of
two assistant clerks was voted
down.

By a resolution introduced by
Supervisor Shipman, \$5000 was
transferred from the General Fund
to the Road Fund of the several
districts upon the table of per cen-
tages in force. Under this appor-
tionment, the road districts receive
the following amounts: South
Hilo, \$1900; North Hilo, \$250;
Puna, \$750; Kau, \$500; South
Kona, \$100; North Kona, \$150;
South Kohala, \$150; North Ko-
hala, \$300; Hamakua, \$900.

A resolution was introduced by
Mr. Shipman "that the County
Treasurer be requested to make a
demand upon the Territorial Audi-
tor in the sum of \$423, being the
shortage in the amount of road tax
actually collected up to Dec. 12,
1905, and forwarded by Tax Col-
lector Willfong to Honolulu."

The question of authority re-
lative to placing gates across public
roads was raised by Supervisor
Shipman and Deputy County At-
torney Aluli was called in for ad-
vice. He stated that the Board of
Supervisors had supervision of the
roads, but implied that there was
uncertainty at some points between
the old law standing unrepealed
and the new act. At his sugges-
tion the County Clerk was in-
structed to address a communica-
tion to the Superintendent of Pub-
lic Works for information. The
chair appointed as committee on
printing A. Fernandez, O. T. Ship-
man and S. L. Desha.
Adjourned.

Enjoyed The Trip.

The Oregon girls formed a club
at the Kilauea crater, naming it the
"Journal-Kilauea Club." The ten
young ladies of the Journal's party
all joined, and they held a meeting
and elected officers on the brink
of the crater. They returned to
Honolulu on Saturday, reporting a
very fine trip.—Star.

Visitors to Volcano.

The following arrived by the
Kinai Wednesday, visited Kilauea
and returned to Honolulu Friday:
Miss Harrington, San Francisco,
Cal.; Mr. and Mrs. E. J. Waddell,
Aurora, Neb.; Mr. and Mrs. G. R.
Howard, Miss A. Howard, Buffalo,
New York; Mr. and Mrs. J. H.
Ryan, Miss F. Ryan, Miss D.
Ryan, Chicago, Ill.; Mr. B. C.
Lattin, Los Angeles, Cal.; Mr. and
Mrs. H. T. Vars, Master Addison
Vars, Buffalo, New York; J. M.
Thompson, J. L. Thompson, Hart-
ford, Conn.; G. F. D. Paine, Miss
A. Paine, Boston, Mass.; Mrs. W.
A. Perry, Miss Marie Kleemand,
New York.

Arriving at Hilo Thursday from
the Volcano, by way of the steamer
Mauna Loa, and departing by the
Kinai Friday were the following:
N. J. Logan, New York City;
Mrs. H. L. Bixby, Los Angeles;
Mrs. L. B. Darden, Portland, Ore.;
G. R. McDonagh, J. A. Mc-
Donagh, W. J. Mitchell, Toronto,
Canada; Mrs. Lewis Hamlin, Mrs.
M. S. Cunningham, Cyrus Willard,
Los Angeles, Cal.; Veola W. Cun-
ningham, Windsor, Cal.; Sam'l P.
Smith, Barre, Mass. The party
reported a good display of fire in
the crater.

Coast Defenses.

Washington, March 6.—Presi-
dent Roosevelt has sent a special
message to Congress urging that
further provision be made for coast
defenses. The President recom-
mends specially the strengthening
of the fortifications at Manila,
Pearl Harbor, Guam, Honolulu and
the Atlantic and Pacific entrances
to the Panama Canal. The total
appropriations asked for amount
to fifty millions of dollars.

Chamberlain's Cough Remedy Acts on Nature's Plan.

The most successful medicines
are those that aid nature. Cham-
berlain's Cough Remedy acts on
this plan. Take it when you have
a cold and it will allay the cough,
relieve the lungs, aid expectora-
tion, open the secretions and aid
nature in restoring the system to a
healthy condition. Sold by Hilo
Drug Co.

Hilo Railroad Co.

Short Route to Volcano

TIME TABLE

In effect July 1, 1905.

Passenger Trains, Except Sunday.

7	9	STATIONS	8	10
A.M.	P.M.		A.M.	P.M.
7:00	2:30	lv. Hilo	9:40	5:45
7:05	2:35	ar. Waialeale	9:35	5:40
7:12	2:53	ar. Olua Mill	9:20	5:25
7:30	3:15	ar. Keaua	9:15	5:15
7:46	3:30	ar. Fernedale	9:00	4:55
8:00	3:55	ar. Mount V. w. ar	8:50	4:45
8:20	4:15	ar. Glenwood	8:30	4:25

1	3	SUNDAY	2	4
A.M.	P.M.		A.M.	P.M.
8:00	2:30	lv. Hilo	10:48	5:15
8:06	2:36	ar. Waialeale	10:44	5:11
8:25	2:55	ar. Olua Mill	10:28	4:56
8:32	3:02	ar. Keaua	10:22	4:50
8:49	3:19	ar. Fernedale	10:06	4:35
9:05	3:35	ar. Mount V. w. ar	9:55	4:28
9:25	3:55	ar. Glenwood	9:35	4:05

FOR PUNA:

The trains of this Company between
Hilo and Puna will be run as follows:

WEDNESDAY:

Leave Hilo Station, by way of Rail-
road Wharf, for Olua and Puna, upon the
arrival of the Steamship Kinai, running
through to Puna and stopping at Paho.

13	FRIDAY	14
A.M.		A.M.
6:00	lv. Hilo	9:55
6:06	ar. R. R. Wharf	9:50
6:26	ar. Waialeale	9:30
6:28	ar. Olua Mill	9:10
6:38	ar. Paho Junction	8:42
6:58	ar. Paho	8:30
7:20	ar. Puna	7:35

5	SUNDAY	6
A.M.		P.M.
9:00	lv. Hilo	4:40
9:06	ar. Waialeale	4:35
9:25	ar. Olua Mill	4:15
9:50	ar. Paho Junction	3:47
10:20	ar. Paho	3:35
10:55	ar. Puna	3:00

Excursion tickets between all points
are sold on Saturdays and Sundays, good
returning, until the following Monday
noon.

Commutation tickets, good for twenty-
five rides between any two points, and
thousand mile tickets are sold at very
low rates.

D. E. METZGER,
Superintendent.

ALL KINDS OF RUBBER GOODS

GOODYEAR RUBBER CO.

R. H. PEASE, President.

SAN FRANCISCO, CAL., U. S. A.

Subscribe for the TRIBUNE
Island subscription \$2.50 a year.