

HINDU ASSASSIN IS SOON HANGED

FAMILY COMPACT

FATHER AND SON REPRESENT ALL POLICE COURT DEFENDANTS THIS MORNING.

Chillingworth, father and son, monopolized the defense in the police court calendar this morning, representing all the cases where there was representation for the accused, eleven matters out of thirteen.

Father Chillingworth appeared for two and Son Charlie was on hand to fight for nine defendants. Continuances were asked and granted in every case, with the result that there was nothing doing in Judge Andrade's auditorium outside of handing sixty days at hard labor to a bum by name of J. Oliver who, when asked where he lived, said he lived in England.

"I asked where you reside," said the judge.

"Newcastle-on-Tyne, England," said the vagrant.

"Don't get facetious," said the court. The interpreter told the bum that the court meant "fresh."

"I don't have to," said the loafer. "Sixty days," said the judge, whereupon the Joke was on the bum.

William Vida, et als, were up for gambling, represented by Charles Chillingworth, and their cases were set for tomorrow when Vida will plead not guilty and probably call evidence that he never gambled in his life. There are thousands who never saw Vida gamble.

Young Chillingworth also represents a little Japanese lady who is alleged to have sold liquor without a license.

Liquor License Inspector Fennell has found a blind-pig in Manoa, near College Hills, arresting the Japanese woman above referred to, Y. Miti. This pretty little barmaid was dispensing booze to workmen. Wine and sake were seized as evidence.

CHAMBERLAIN'S COUGH REMEDY. This is a medicine of great worth and merit. Try it when you have a cough or cold and you are certain to be pleased with the quick relief which it affords. It is pleasant to take and can always be depended upon. For sale by all dealers, Benson, Smith & Co., agents for Hawaii.

A WEALTH OF NEW GOODS. The first shipments of goods selected in New York personally by our Mr. Sachs have now been opened and are on display. All the latest concepts of Dame Fashion.

NEW RICE MILL. The K. Yamamoto Rice Mill is the largest as well as the finest in the islands. All the machinery is of the very latest pattern. The famous Tengu Rice is cleaned at this mill. With the large cleaning capacity they are able to handle considerable outside work.

Charles M. Graham has assumed the management of the Honolulu Distributing Company and will be responsible for all debts against said company for furniture and office fixtures. Any bills that may have been given to Mr. Cassius Griffith for collection will not be recognized by the new management, Mr. Griffith having left the territory.

PROPER AND ADEQUATE LIFE INSURANCE DRIVES AWAY THE SPECTRE OF DEPENDENT OLD AGE. WE ARE LIFE INSURANCE AGENTS.

Insurance Department

Hawaiian Trust Company, Ltd.

923 Fort Street.

1909

\$200,000 BOND ISSUE APPROVED

Washington, August 17.—To Governor Frear, Honolulu.

"President approved bond issue 6th inst. Treasury accepts same as security public deposits.

"FRANK PIERCE, Assistant Secretary Interior."

The foregoing cablegram refers to the issue of \$200,000 of public improvement bonds authorized by the Legislature this year.

Governor Frear, speaking of the matter, said: "We wrote, at the same time as we wrote to the Secretary of the Interior, to Dillon & Hubbard, the Territory's financial agents in New York, giving them the necessary data including a copy of the laws of 1909, and instructed them as to what they should do, but to do nothing until we cabled them.

DEFENSE DEPENDS ON STRICT LETTER

ATTORNEY LIGHTFOOT ADDRESSES THE JURY FOR THE DEFENSE IN THE CONSPIRACY TRIAL—HE INSISTS ON STRICT CONSTRUCTION OF THE CHARGE AGAINST THE DEFENDANTS—URGES THE LAWFUL RIGHT OF LABORERS TO STRIKE.

W. A. Kinney's principal address to the jury for the prosecution in the strike conspiracy case was concluded about nine o'clock this morning. It had occupied four and a half hours.

J. Lightfoot for the defense began his closing address forthwith. His argument reflected that of his opponent, being directed to neutralizing the effect of the latter, point by point. In one of his references to Mr. Kinney's speech Mr. Lightfoot called it a masterpiece. Another line taken up at length by Mr. Lightfoot was that of the instructions the court would give the jury, commenting upon the parts favorable to the defense from the document in his hand.

They were not trying the defendant, Mr. Lightfoot said, for breach of promise of marriage, or for the Waipahu riot, or for the Gileli assault at Kahuku, or for establishing Japanese domination over the Territory of Hawaii, or for any of various other things brought out in the trial. What they were charged with, and what alone they were being tried for, and exclusively on which the verdict must be rendered, was a conspiracy to destroy the business of the corporations owning the five plantations at Aiea, Waipahu, Ewa, Waialua and Kahuku and to impoverish those corporations. He denied the contention of Mr. Kinney that the defendants were on trial for conspiring to do a lawful thing by unlawful means. The words charging an intention to impoverish the companies were ridiculous, mention being made of the payment of dividends of two per cent per month by Oahu Sugar Co. on stock that the speaker believed had been four times watered.

While denying that the four defendants had caused the strike, he urged the right of skilled and unskilled laborers to property in their services. They had a lawful right to strike, as also to maintain a picket system along the highways. He pointed at the defendants, laughing at the idea that those four men should conspire to confiscate the property of the five corporations. The jurors were asked if any of them should feel himself liable to the charge of confiscating the property of his employer should he ask the latter next Saturday for an increase of five dollars in his wages.

Commenting on the usual instruction of the court to be given, that because a defendant had not taken the witness stand was not to be counted against him, Mr. Lightfoot was saying there were various reasons why all of the defendants should not have been called, mentioning Makino and Tansaka. One reason was that it would have

resulted in only a repetition of evidence.

Mr. Kinney, who was pacing up and down the corridor outside, came in and announced that if counsel opened the question of why Makino and Tansaka were not called he should avail himself of the privilege of going into that matter.

Mr. Lightfoot acknowledged that he had said more than he meant to, and then there was a firecracker passage between the attorneys. Mr. Lightfoot, proceeding, went into the evidence to show what the prosecution had failed to prove with respect to the actual charge. He said the so-called Waipahu riot had nothing to do with the case. As the charge against thirteen men of riot had resulted in a mistrial before Judge Robinson, these jurors might have an opportunity of being informed just of what that riot consisted, when they would probably find that the trouble arose entirely from the foolishness of a policeman in brandishing and firing a pistol, which scared the people and brought them around in a crowd.

Although at second recess he had said he hoped to conclude by noon, Mr. Lightfoot did not wound up at some minutes after 12 o'clock when Judge De Bolt ordered recess until 2 o'clock.

Mr. Kinney has the privilege of reply for the prosecution, so that it is doubtful if the case will go to the jury this afternoon.

NIIHAU SINKS OFF MOLOKAI

INTER-ISLAND FREIGHT STEAMER CRASHES INTO SHELVING CORAL REEF EARLY THIS MORNING—ALL HANDS SAVED—S. S. CLAUDINE WILL LOOK FOR WRECK AND BRING CREW BACK TO HONOLULU—WIRELESS DETAILS MEAGER.

Inter-island freight steamer Niihau, Captain Oness, is reported by wireless to be a total wreck somewhere on the Kaimiloa reef, off the island of Molokai.

This morning, according to the latest wireless, Captain Oness followed the crew ashore, thus indicating that all hope for the vessel's salvation had been abandoned.

She is reported to have struck early this morning, as near as can be learned from the meager details available, and to have started taking water immediately.

S. S. Claudine, one of the company's larger boats, will this afternoon be near the scene of the wreck and will make a search for the Niihau, though little hope is had of her recovery. She is supposed to have struck, while at full speed, on a shelving reef and to have gradually slipped back into deep water, so that she could not have been above water much after Captain Oness left her later in the morning.

All hands are safe, says the wireless word to the company's headquarters here.

Until a detailed account is had from her master, the incidents of the disaster and leading thereto cannot be determined. Since she struck early this

morning, however, and but little time elapsed between her striking and her being abandoned, it is believed that the life-boats must have been called into requisition in a hurry. How the accident occurred it is, at this time, impossible to say, for whether an unusual current, or defective steering gear, or a new reef is responsible must remain for the master's explanation.

The Niihau was brought here from the Sound by the Inter-Island Company some ten years ago and converted to local use, having before been a steam lumber schooner. She was a sturdy wooden craft that had seen rough work in icy waters before she came to these warmer seas.

Captain Oness is a capable and experienced navigator and the facts will probably show that circumstances over which he had no control were responsible for the wreck.

The Niihau was insured, but there will be considerable freight loss sustained.

The most indefinite information was received in regard to her location when she went aground. It is not expected that the Claudine will find her.

The Claudine will pick up the Niihau's crew and return the shipwrecked men to this city.

THE CONGRESSIONAL VISIT

As a result of the meeting of the general committee last night, Chief Clerk Matheson gave out today the following amended suggestions for the Congressional visit:

Monday, August 30—Party arrives from San Francisco. Surf riding in afternoon. Committment and hand on steamer to meet party.

Tuesday, August 31—Visit public institutions, military posts, etc. Reception at Governor's in afternoon. Band concert and dance at Moana in evening.

Wednesday, Sept. 1—Visit Pearl Harbor, Lilehua camp and Pineapple Plantations. Lunch, review and polo game at Lilehua.

Thursday, Sept. 2—Automobile ride around island via Pali and Haleiwa. Band concert and dance at Seaside.

Friday, Sept. 3—Luncheon given by Mayor Fern. Visit Bishop Museum.

Saturday, Sept. 4—Band concert and dance, Alexander Young Hotel.

Sunday, Sept. 5—Sail for Kauai on Mauna Kea in evening.

Monday, Sept. 6—Arrive Nawiliwili at daybreak. Kauai reception committee meet steamer and escort those who desire to see the windward side of the island by automobile to Hanalei, where the steamer will be met. At Hanalei the party will breakfast aboard the steamer. Thence by steamer to Waimea. Land and lunch at Mr. Gay's. From Waimea to Lihue by automobile. Supper and reception at Lihue. Sail for Honolulu from Nawiliwili.

Tuesday, Sept. 7—Sail by "Mauna Kea" at 12 noon for Hawaii.

Wednesday, Sept. 8—Arrive in Hilo in morning. Those who desire leave steamer at Mahukona and take automobiles through Kohala to Waimea. Start early Thursday for Kukuhaele and view Waipio valley and Hanalei ditch, then through to Hilo Thursday evening. This will give those who are interested or concerned with reclamation a good opportunity to see what we are doing, and also to see the Kohala, Ahuloa and Waimea homesteads. (A subcommittee is now seeing if it is possible to include a visit to Kona in itinerary).

Thursday, Sept. 9—Visit Volcano, etc. This would not apply to those landing at Mahukona, who would probably visit the Volcano on Friday, Sept. 10.

Friday, Sept. 10—Return to Hilo. Reception in evening. Party distributed and entertained by residents.

Saturday, Sept. 11—Inspect Break-

water. Excursion to Puna. Auto rides, etc. 11 p. m. sail for Maui.

Sunday, Sept. 12—Arrive at Hana at daybreak. Entire party land and go to Anderson's at Nahiku and return to Hana, if necessary, but if possible steamer to take all on at Nahiku. Those who desire to ride may return along the Koolau ditch to Makawao to see the ditch country, the others to go on to Kahului to be distributed and entertained by the residents of Punene, Paila, Hamakunapoko and Makawao.

Monday, Sept. 13—Such as desire to visit Haleakala, others go to Iao Valley. Reception at Waikuku at 4 p. m., then take automobiles for Lahaina and steamer for Honolulu.

Tuesday, September 14—Arrive at Honolulu. Rest. Surf riding in afternoon.

Wednesday, September 15—Visit schools. Chamber of Commerce banquet.

Thursday, Sept. 16—Farewell reception by Delegate Kalaniano'ole.

Friday, Sept. 17—Sail on Mongolia for San Francisco.

HERO INJURED

WINDUP WANTED

HINDU ASSASSIN HANGED UNAFRAID

LONDON, August 17.—Madarfa Dhuigri, who assassinated Sir William Curzon Wyllie and another, was executed on the scaffold today. The young Hindu student exhibited no sign of fear and was hanged unafraid.

(Associated Press Cable to The Star.)

ACAPULCO, August 17.—This city yesterday felt three severe shocks of earthquake, the ocean receding from the shore a distance of thirty feet, leaving vessels in the harbor stranded.

WASHINGTON RECORDS EARTHQUAKE TODAY

WASHINGTON, D. C., August 17.—An earth tremor was recorded by the government seismograph at 2.22 o'clock this afternoon.

DENVER, August 17.—The Trans-Mississippi Congress opened here today.

Hawaii is represented at this great gathering, the Trans-Mississippi Congress of late years having taken a large interest in affairs Hawaiian.

KANSAS CITY, August 17.—The heat wave continues with much submerging.

PEKIN, August 17.—It has been settled that the United States will be assigned one-fourth of the \$30,000,000 railroad loan.

PARIS, August 17.—It is reported here that the government of Spain is negotiating for peace with the Moors.

GLASGOW, August 17.—A fire in the retail section of the business district of this city today destroyed property valued at \$1,250,000.

(Associated Press Morning Cablegrams.)

EXTREME HEAT IN MIDDLE WEST. KANSAS CITY, August 17.—The most intense spell of heat experienced in years holds this city in its grasp. A score of deaths have resulted already as the result of heat prostration.

OMAHA, August 17.—Many prostrations have taken place here as a result of the intense heat. Crops in this part of the country are being literally burned up.

MARINE CORPS VICTORIOUS. CAMP PERRY, August 17.—Marine Corps marksmen took first, second and third prizes. Sergeant Hingle broke the world's records at 800, 900, and 1000 yards, firing seven shots with a perfect score in each instance.

SUTTON INQUIRY CLOSED. ANNAPOLIS, August 17.—The findings in the Sutton case, reached in secret session, have been submitted to the Secretary of the Navy for review. They have not yet been made public.

WAR MANEUVERS AT BOSTON. BOSTON, August 17.—The most extensive war maneuvers held in years are now in progress around Boston. General Tasker M. Bliss is in command of the red army of invasion.

ALITA GHIRARDELLI DROWNED. MONTEREY, August 17.—Alita Ghirardelli, daughter of D. Ghirardelli, the manufacturer of chocolate, was drowned here yesterday while in bathing.

A Chinese paranoiac was this morning examined for entrance to the asylum for the insane.

Sunday last completed two years of Governor Frear's administration.

YARICK APPEALS

Charles Yarick, who was dismissed from the conspiracy trial jury for drunkenness and later was convicted of being found drunk in a public place and sentenced to jail for three months with costs, has appealed from District Magistrate Andrade to the Circuit Court sitting with a jury.

Takaki, fined \$50 without costs for carrying on a hotel business without a license, has appealed to the Circuit Court, not mentioning a jury.

T. Kawaguchi, fined \$25 without costs for carrying on a merchandise business without a license, has appealed for mitigation of sentence.

Harry T. Mills has appealed from District Magistrate Andrade's judgment in his favor for \$22.27 with discharge of the garnishee in his suit against Joseph K. Clark.

Claudius H. McBride, private secretary to the Governor, left for Hilo today accompanying Mr. Bailey, private secretary to the Secretary of the Treasury, Washington, who goes to look over the Federal building site and other matters at the Crescent City.

Continued Patronage

is always a good recommendation but when consumers come in for extra foot wear it is a sure sign the store has "made good."

Our footwear has "caught on" in good earnest,

Make us prove that we merit your patronage.

MANUFACTURERS' SHOE CO LIMITED

ROYAL BAKING POWDER Absolutely Pure

The only baking powder made with Royal Grape Cream of Tartar

No Alum, No Lime Phosphate

1909

1909

1909

Do You Not Want A NEW HOUSE Built for the Climate?

If You Do, and Want It at the Smallest Cost, See

W. G. CHALMERS

General Contractor and Builder, 1039 Bethel St., BETWEEN HOTEL & KING

Our Motto Is: SMALL PROFITS AND QUICK RETURNS.

Work Taken on Any Time Limit, Rush Jobs Being Handled with the Same Facility as Those Allowed Long Running Periods.

Telephone 60. Post Office Box 638.

Oceanic Steamship Company SHIPPING INTELLIGENCE

Alameda Schedule table with columns: LEAVE S. F., ARRIVE HON., LEAVE HON., ARRIVE S. F. and dates from Aug 7 to Dec 7.

Rates from Honolulu to San Francisco. First Class, \$60; Round Trip, \$110.

FOR PARTICULARS, APPLY TO W. G. Irwin & Co., Ltd AGENTS FOR THE OCEANIC STEAMSHIP CO.

Canadian-Australian Royal Mail Steamship Co

Steamers of the above line running in connection with the CANADIAN-PACIFIC RAILWAY COMPANY between Vancouver, B. C., and Sydney, N. S. W., and calling at Victoria, B. C., Honolulu and Brisbane, Q.

FOR FIJI AND AUSTRALIA. FOR VANCOUVER. MARAMA... AUG. 20 AORANGI... SEPT. 15 MAKURA... SEPT. 17 MOANA... OCT. 13

CALLING AT SUVA, FIJI, ON BOTH UP AND DOWN VOYAGES. Theo. H Davies & Co., Ltd., Gen'l Agents

American - Hawaiian Steamship Company

From New York to Honolulu---Weekly Sailings via Tehuantepec

Shipping schedule table with columns: FROM SAN FRAN. TO HONOLULU, FROM SEATTLE AND TACOMA TO HONOLULU DIRECT, and dates.

Pacific Mail Steamship Co. Toyo Kisen Kaisha S. S. Co.

Shipping schedule table with columns: Steamer names, dates, and destinations like NIPPON MARU, SIBERIA, CHINA, etc.

FOR FURTHER INFORMATION APPLY TO H. HACKFELD & CO. LTD

MATSON NAVIGATION COMPANY

Schedule S. S. HILONIAN in the Direct Service between San Francisco and Honolulu.

Shipping schedule table for S. S. HILONIAN with columns: Arrive Honolulu, Leave Honolulu, and dates.

Castle & Cooke Limited, Agents

(Later Shipping News on Page Five)

TIDES, SUN AND MOON.

New Moon August 15th at 1:23 p. m.

Tide and moon schedule table with columns: Date, High Tide, Low Tide, Sun Rise, Sun Sets, Moon Rise, Moon Sets.

Times of the tide are taken from the U. S. Coast and Geodetic Survey tables. The tides at Kahului and Hilo occur about one hour earlier than at Honolulu.

Shipping in Port

(Army and Navy). U. S. S. Iroquois, Moses, station tug. L. H. T. Kukui, Middleton. U. S. S. St. Louis, Gleaves, Samoa. U. S. A. T. Sheridan, Healy, S. F. U. S. S. Buffalo, Brown, Guam.

The Mails

(Incoming). From Yokohama, Siberia, Aug. 7. From San Francisco, Nippon Maru, Aug. 24. (Outgoing). For Yokohama, Nippon Maru, Aug. 24. For San Francisco, Alameda, Aug. 18.

TENNIS PROGRESS

IN THE NORTHWEST TACOMA, (Wash.), August 5.—Several surprises marked the fourth day's play in the Pacific Northwest tennis tournament here yesterday.

finals. Tomorrow the doubles championship will be decided between Fitz and Russel, the Seattle pair, and Breeze and Gorrill. The results yesterday were:

Men's singles—Gorrill, Oakland, Cal. beat W. S. Fitz, Seattle, 6-0, 6-2; Tyler, Spokane, beat Breeze, Bellingham, 6-1, 7-5; Russell, Seattle, beat Armstrong, Tacoma, 6-2, 2-6, 6-4; Tyler, Spokane, beat Shannon, Seattle, 6-3, 6-2; Shannon, Seattle, beat Bowden, Everett, 6-2, 7-5.

Women's singles—Miss Ryan beat Southard, 6-2, 6-2; Miss Kershaw beat Miss Lowell, 6-2, 3-6, 6-2; Miss Hotchkiss beat Miss M. Skewis, 6-9.

6-0; Miss McFadon won from Miss Woolsey by default.

Women's doubles—Miss Hotchkiss and Miss Ryan beat Miss Kershaw and Miss Keown, 6-2, 6-1; Miss McFadon and Miss E. Baillie beat Miss Lowell and Mrs. Southard, 6-4, 6-3.

Union Pacific Railroad

SUGGESTS Speed and Comfort

Three trains daily, through cars, first and second class to all points. Reduced rates take effect soon. Write now.

S. F. Booth GENERAL AGENT. No. 1 Montgomery Street, SAN FRANCISCO.

HAWAIIAN Macaroni Manufacturing Co., LIMITED

Beretania Street near Aala Street.

MANUFACTURERS OF MACARONI (HOSHI UDON) AND BUCKWHEAT (HOSHI SOBA)

The Largest and Only Incorporated Concern of Its Kind in Honolulu. A New Enterprise Launched by Enterprising Merchants.

K. Yamamoto SALES AGENT.

Tel. 399. Hotel Street near Nuuanu. P. O. Box 819.

Comfort MEANS Economy The Hawaiian Electric Co., advertisement with image of a fan.

STAR Printing Office advertisement with text: For years the Star's printing office has been a busy place. We have gained a reputation for doing good work at fair prices...

REX FLINTKOTE ROOFING advertisement with image of a man hammering a nail and text: One Man One Hammer and the roll. So runs the brief and simple story of getting a perfect roof with...

UNION-PACIFIC TRANSFER CO., LTD advertisement with text: BAGGAGE, SHIPPING, STORAGE, WOOD, PACKING, COAL. Phone 58. FURNITURE AND PIANO MOVING.

BY AUTHORITY

ORDINANCE NO. 5.
AN ORDINANCE PROVIDING FOR THE CARE OF THE INDIGENT AND OTHER SICK OF THE CITY AND COUNTY OF HONOLULU, PROVIDING FOR THE APPOINTMENT OF A CITY AND COUNTY PHYSICIAN AND PRESCRIBING HIS DUTIES, AND PROVIDING PENALTIES FOR ANY VIOLATION OF THE ORDINANCE.

It is Ordained by the People of the City and County of Honolulu.

SECTION 1. The Board of Supervisors of the City and County of Honolulu shall appoint a suitable person as City and County Physician for said City and County whose salary shall be fixed by the Board of Supervisors. Said City and County Physician shall have all of the powers, and shall perform all of the duties prescribed by this Ordinance, and shall have such other powers and perform such other duties as may be prescribed by the Board of Supervisors. The City and County Physician shall have general supervision over all sanitary and health matters in the City and County of Honolulu, and shall supervise all of the acts and doings of all sanitary, health, food and other inspectors in said City and County. It shall be the duty of the City and County Physician to enforce all sanitary and health Ordinances of the City and County, and he shall have all necessary and proper powers for such purpose.

SECTION 2. Any indigent sick person desiring care and medical treatment at the expense of the City and County shall make application therefor to the City and County Physician. It shall be the duty of the City and County Physician to investigate all such applications, and in proper cases in his discretion, or when so directed by the Board of Supervisors, shall care for and medically treat such person at the expense of the City and County of Honolulu. The City and County Physician may in proper cases, in his discretion or when directed by the Board of Supervisors, issue a permit to any such applicant, to enter any hospital or other similar institution designated by the Board of Supervisors for that purpose. The City and County Physician shall have the right to visit at any time, any hospital or other similar institution in which any such indigent sick person has been placed for the purpose of ascertaining the condition of such person. When in the opinion of the City and County Physician such indigent person no longer needs hospital service, he shall forthwith notify such hospital or other similar institution to discharge said indigent person. The City and County of Honolulu shall not be liable to any hospital or other similar institution for the expenses of hospital service for such patient after such notice has been so given by the City and County Physician.

SECTION 3. The City and County Physician shall attend and medically treat any sick or injured prisoner in the Honolulu Jail, or when necessary in any police station in the City and County, and shall examine all applicants for employment in the Police or Fire Departments and all policemen, firemen and handsman who may apply for sick leave permits.

SECTION 4. No person or thing liable to propagate cholera, typhoid fever, scarlet fever, diphtheria, small-pox or other contagious or infectious disease shall be brought within the limits of the City and County of Honolulu. Whenever it shall come to the knowledge of any person that any one is sick with any contagious or infectious disease, he shall immediately give notice thereof to the City and County Physician. No person without a permit from the City and County Physician shall carry or remove from one building to another any person sick with any contagious or infectious disease, nor shall any person so sick be shipped or removed from the City and County of Honolulu to any other place, except under the direction and by permission of the City and County Physician.

SECTION 5. In case of pestilence or epidemic disease or danger therefrom, if the sanitary condition of the city requires, it shall be the duty of the City and County Physician to adopt all such precautions as in his judgment the public health requires, in order to prevent the introduction or spread of any contagious or infectious disease.

SECTION 6. Any person who shall violate any of the provisions of this Ordinance shall be deemed guilty of a misdemeanor, and upon conviction thereof shall be punished by a fine not exceeding Five Hundred (\$500.00) Dollars, or by imprisonment not exceeding a term of six months or by both such fine and imprisonment.

SECTION 7. This Ordinance shall take effect from and after the date of its approval.

Introduced by Supervisor William Ahia.
Date of Introduction July 19th, A. D. 1909.
Approved this 4th day of August, A. D. 1909.

JOSEPH J. FERN,
Mayor.

10th—Aug. 6, 7, 9, 10, 11, 12, 13, 14, 16, 17

W. G. CHALMERS
GENERAL CONTRACTOR
AND BUILDER
Estimates Furnished Free.
Telephones—Office 60; Residence 1228.
Honolulu, T. H.
Offices 1059 Bethel near Hotel.

TERRIBLE TRAGEDY STIRS SMALL TOWN

NEW BEDFORD, July 29.—Jealousy and drink, fomented into a crazed passion to kill, caused the most fearful tragedy in the history of the little town of Westport during the early hours Monday morning. Mrs. Tina Hall Fanning died an awful death, and Robert M. Fanning dramatically shot himself to death in the central police station in this city a few hours after he had chopped his wife to death on a lonely Westport road.

This crime rivals anything that has occurred in the annals of crime hereabouts, in that both Fanning and his wife were young, well to do and with everything to live for. There had been a quarrel because of Fanning's habits of drinking, and this culminated when Mrs. Fanning left her home early Sunday evening, vowing not to return so long as her husband lived there. It was because he was angered at this that Fanning left the house and, going to the carriage house for a small hatchet used in killing chickens, followed his wife down the road toward the Head of Westport.

What words took place there the world will never know. There, about 100 yards west of Lyons brook, in the bushes beside the road, was found the fearfully bruised body of the murdered woman. There were blood spots in the road, and the head was lying face down in a clump of bushes. The space in the bushes that was trampled

down indicated the struggle that ensued before Fanning succeeded in killing his wife. The small hatchet, swung with the force of a man crazed with passion, penetrated clear through the skull. The terrible dents on the face show that Fanning struck wildly until life was extinct.

Aged George Hall remains to mourn the death of his daughter, while in Providence are the father and mother of Fanning, Mr. and Mrs. Dennis Fanning. At the Westport home is the year old daughter, Rita, of the murdered woman, who would probably have shared the fate of her mother had Fanning been able to take the child from the house. That this crime does not stain his memory is due wholly to Mrs. Mary Murray, the housekeeper at the Westport home, who prevailed on Fanning to leave the child at home.

CLEVELAND DEAD.

Lots of people are just finding out what a big man Grover was. Others knew of his bigness long ago.—Philadelphia Record.

PROPER TREATMENT FOR DYSENTERY AND DIARRHOEA.

The great mortality from dysentery and diarrhoea is due to a lack of proper treatment at the first stages of the disease. Chamberlain's Colic, Cholera and Diarrhoea Remedy is a reliable and effective medicine, and when given in reasonable time will prevent any dangerous consequences. For sale all dealers Benson Smith & Co. Agents for Hawaii.

Fine Job Printing, Star Office.

BY AUTHORITY

ORDINANCE NO. 6.
AN ORDINANCE PROVIDING FOR THE APPOINTMENT OF A PLUMBING INSPECTOR OF THE CITY AND COUNTY OF HONOLULU, PRESCRIBING THE POWERS AND DUTIES OF SUCH PLUMBING INSPECTOR, ESTABLISHING RULES AND REGULATIONS FOR THE PLUMBING AND DRAINAGE OF BUILDINGS AND THE CONSTRUCTION OF HOUSE SEWERS IN THE CITY AND COUNTY OF HONOLULU, AND PRESCRIBING PENALTIES FOR THE VIOLATION OF THE PROVISIONS OF THE ORDINANCE.

BE IT ORDAINED BY THE PEOPLE OF THE CITY AND COUNTY OF HONOLULU:

PLUMBING INSPECTOR.
SECTION 1. The Board of Supervisors of the City and County of Honolulu shall appoint a suitable person as Plumbing Inspector of the City and County of Honolulu, whose salary shall be fixed by the Board of Supervisors. Said Plumbing Inspector shall have all of the powers and shall perform all of the duties hereinafter provided, and shall have such other powers and perform such other duties as may hereafter be designated by the Board of Supervisors.

REGISTRATION.
SECTION 2. From and after the passage of this Ordinance, it shall be unlawful for any person or persons, firm or corporation to carry on the business of or do any plumbing work in the City and County of Honolulu, until he or they shall have first registered at the office of the Plumbing Inspector.

LICENSE.
SECTION 3. The Treasurer of the City and County shall issue to any person or persons, firm or corporation who has registered in accordance with the provisions of Section 2 hereof, a license to do plumbing work in the City and County of Honolulu.

No license shall be granted for more than one year or the unexpired period thereof; all licenses shall expire upon the first day of July of each year. The annual fee for such license shall be the sum of Ten (\$10.00) Dollars, which fee shall be paid to the Treasurer of the City and County.

BOND.
SECTION 4. Before or at the time a license is issued as provided in Section 3 hereof, the applicant therefor, shall give a bond to the City and County of Honolulu in the sum of Five Hundred (\$500.00) Dollars, with good and sufficient sureties for the faithful discharge of his or their duties under this Ordinance, which bond shall be approved by the Board of Supervisors.

PLANS OF HOUSE PLUMBING TO BE FILED.
SECTION 5. Any person or persons, firm or corporation before doing any plumbing work in any building of any description within the City and County of Honolulu, except in case of stoppages in pipes or repair of leaks in drains, vent pipes, waste pipes, faucets, valves and water supply pipes, shall file with the Plumbing Inspector, plans and specifications which shall clearly show and indicate the entire work to be done, the number and character of all fixtures, the size and locations of all drain, waste, soil and vent pipes, traps and cleanouts, and whether connection is to be made with the sewer or with a cesspool.

The plans and specifications shall be accompanied by and application, written in ink upon blanks furnished by the Plumbing Inspector, giving the name of the owner or owners of the property and the exact location of the same, together with such other information as may be required by the blanks, and no part of such work shall be done until a permit authorizing the same shall have been issued by the Plumbing Inspector.

FEE FOR PERMIT.
SECTION 6. No permit shall be issued to any person or persons, firm or corporation for doing plumbing work in the City and County of Honolulu, until the sum of \$2.00 has been paid to the Plumbing Inspector therefor, provided that this provision shall not apply to the repair of leaks in drains, vent pipe, waste pipes, faucets, valves or water supply pipes, or to the removal of obstructions in pipes. One permit shall suffice for one building and one outhouse only.

DISPOSAL OF PLANS.
SECTION 7. When a permit is issued, the application, signed by the person or persons, firm or corporation, together with the plans and specifications, shall be filed with the Plumbing Inspector and shall thereafter remain in the custody of said Inspector. When it is desirable to make changes in the plumbing work from that shown on the plans and specifications as filed, the person or persons, firm or corporation to whom the permit has been issued shall give notice of such changes, and if such changes are found to be in accordance with the provisions of this Ordinance, such changes shall be allowed.

SEWER CONNECTION REQUIRED.
SECTION 8. In the construction, reconstruction or alteration of any building of any description, in which plumbing fixtures are to be placed all plumbing work shall be connected with the public sewer, where such sewer is accessible, and, where there is no sewer accessible, with a cesspool, constructed to the approval of the Plumbing Inspector. All buildings in which the plumbing has been done, prior

to the passage of this Ordinance, must conform to this Ordinance before being connected to the sewer.

HOUSE SEWER.
SECTION 9. The term "house sewer" is herein used to designate that part of the drain between the sewer or cesspool and to within five feet of the building connected or to be connected with the sewer or cesspool. House sewers shall not be less than four (4) inches in diameter and shall be of cast iron pipe or salt glazed vitrified pipe and shall be laid to a true grade, at least one foot under ground. Changes in direction shall be made by "Y" branches and 1-6, 1-8, or 1-16 bends. Salt glazed vitrified pipe will not be allowed under any building. If salt glazed vitrified pipe is used in the construction of any sewer, it shall have a fall of at least one-quarter of an inch to the foot the joints shall be made of mortar, composed of equal parts of Portland or other good standard cement and clean-screened sand, and said joints shall be covered with cloth in laying. A disk entirely filling the house sewer pipe shall be kept in the pipe and drawn forward as each length is laid. When salt glazed vitrified pipe is used in wet ground or water, the same shall be concreted entirely around the pipe up to a thickness of at least six inches. When cast iron pipe is used all joints shall be packed with picked oakum and run with molten lead, and shall be well caulked, and shall have a fall of not less than three-sixteenths of an inch to the foot. In the construction of any house sewer no intermediate section of salt glazed vitrified stone pipe shall be used between sections of cast iron pipe nor shall any cast-iron sections be used between sections of salt glazed vitrified stone pipe. The free flow of air shall not be obstructed in any house sewer when connected with any cesspool or sewer.

HOUSE DRAINS.
SECTION 10. The term "house drain" is herein used to designate that part of the drain under the first floor of the building or structure and extending five feet outside of the walls thereof. All house drains shall be of cast-iron or galvanized wrought iron pipe not less than four inches in diameter and shall have a fall of not less than 3-16 of an inch to the foot. In buildings or structures of over three stories in height the grade of cast iron pipe commercially known as Extra Heavy or galvanized wrought iron shall be used for the house drain, soil, waste and vent pipes and the fittings shall be of the same grade. All house drains shall be securely ironed to walls or laid in trenches of uniform grade or suspended to floor timbers by strong iron hangers. In no case shall double hubs be allowed and all hubs shall be laid opposite to the fall of the sewer. Brass cleanout connection located in accessible places shall be put in all house drains at the foot of each vertical riser and at every change of direction of the drain.

SOIL PIPE.
SECTION 11. The term "soil pipe" is herein used to designate the vertical pipe to which one or more water closets and other fixtures are connected. All soil pipe shall be of cast iron or galvanized wrought iron pipe not less than four inches in diameter, and if of cast iron, in buildings of over three stories, shall be of extra heavy grade. All soil pipes shall be continued unobstructed and undiminished in size not less than one (1) foot nor more than fourteen (14) inches above the roof of the building. All soil pipes shall be run on as straight a line as possible and shall not terminate within ten (10) feet of any window or opening. If galvanized wrought iron pipe is used all the fittings must be recessed and the pipe reamed to full bore. In the construction of soil pipes all cast iron pipes and fittings shall be covered, inside and outside, with a coating of asphaltum. Changes in direction of soil pipes shall be made by "Y" branches and 1-6, 1-8 or 1-16 bends; and in no case shall double hubs be used except for vent fittings where the fittings are to be inverted. Sanitary "T's" may be used in vertical runs. Tin pipes and pipes made from sheet metal shall not be used in the construction of soil pipes.

WASTE PIPES.
SECTION 12. The term "waste pipe" is herein used to designate any pipe leading from any fixture to a soil pipe or house drain and receiving the discharge from any fixture. All waste pipes except as herein provided shall be of iron. Branch waste pipes may be constructed of lead or iron, provided, however, that if lead is used it shall be only as a branch to connect with an iron pipe and shall not exceed three feet in length. The size of the waste pipes shall vary according to the fixtures they are to serve, and in no event shall be less than the following:

Closet	4"
Slop Sink	3"
Floor Drain	2"
Bath	1 1/2"
Sink	1 1/2"
Wash Tray	1 1/2"
Urinal	1 1/2"
Bar Waste	1 1/2"
Basin	1 1/2"

All waste pipes from grease traps shall be in size not less than the outlet of same. Waste pipes from refrigerators or other receptacles in which provisions are kept, shall not connect directly with the drain, soil or vent pipe, or discharge upon the ground beneath the building, but shall be trapped and the discharge therefrom allowed to drip into an open fixture in daily use, or be conveyed to the ground at least three (3) feet away from the building.

TRAPS.
SECTION 13. All fixtures shall be separately and independently trapped as near the opening thereof as is practical. All traps shall have a water seal of not less than 1 1/2 inches in depth and shall be set true to water seal. The size of every trap shall be the same as the waste pipe it serves. Kitchen sinks shall be provided with an approved grease trap when connected to the public sewer. No grease trap shall in any case be placed under a building or structure. The capacity of grease traps shall be as follows:

For residences, not less than three (3) gallons;
For restaurants, hotels, tenement and boarding houses not less than 30 gallons.

Provided, however, that grease traps in all restaurants, hotels, tenement and boarding houses shall be constructed subject to the approval of the Plumbing Inspector. No bell traps shall be used in any case. Anti-siphon traps shall only be used where the Plumbing Inspector finds that it is impracticable to use any other. All traps in the ground or in concrete shall be of cast iron coated with asphaltum.

VENTS.
SECTION 14. In every building or structure where there is a water closet, there shall be at least one four (4) inch cast iron vent pipe, running from the house drain unobstructed and undiminished in size to a point not less than one (1) foot above the roof of the building or structure or fire-wall, or if such building or structure has a fire-wall within ten (10) feet of said vent, then not less than one (1) foot above said fire-wall. The terminal of all vents shall be at least ten (10) feet from any window or opening. All traps within any building or within five feet of any building shall be vented by special air pipes of lead or iron, but in no case shall a vent pipe end in chimney or earthenware flue. No lead pipe shall be used for any vent except as a branch to connect with an iron pipe and then only for a distance not to exceed two feet. Vent pipes may converge into one pipe at any point not less than three (3) feet six (6) inches above the floor line of the building or structure. All vent pipes shall be extended above the roof of the building or structure in the same manner as the four (4) inch cast iron vent pipe herein referred to. The size of vent pipes for each fixture shall not be less than the following:

Basins	1 1/2"
Sinks	1 1/2"
Baths	1 1/2"
Wash Trays	1 1/2"
Urinals	1 1/2"
Bar Sinks	1 1/2"
Bidet	1 1/2"
Sitz Baths	1 1/2"
Water Closets	2"
Slop Sinks	2"

All vent pipes shall have a grade towards the trap and shall not be carried more than 12 feet out of a vertical line to enter another pipe. When two water closets are on a four inch vent stack, such stack may vent both closets providing it is within 24 inches of the traps of such closets, on the line of the pipe. Whenever fixtures are grouped the vents therefor shall not be less than the following:
1 Basin on one 1 1/2" pipe
2 Basins on one 1 1/2" pipe
2 Sinks or 2 Baths or 2 Wash Trays or 2 Urinals or 2 Bar Sinks or 2 Bidets or 2 Sitz Baths on one 1 1/2" pipe.
2 Basins or 4 Sinks or 4 Baths or 4 Wash Trays or 4 Urinals or 4 Bidets or 4 Sitz Baths or 2 Water Closets or 2 Slop Sinks or 2 Dirt Catchers on one 2" pipe.

- 8 Basins or 6 Sinks or 6 Baths or 6 Wash Trays or 6 Urinals or 6 Bidets or 6 Sitz Baths or 3 Water Closets or 3 Slop Sinks or 3 Dirt Catchers on one 2 1/2" pipe.
- 11 Basins or 8 Sinks or 8 Baths or 8 Wash Trays or 8 Urinals or 8 Bidets or 8 Sitz Baths or 5 Water Closets or 5 Slop Sinks or 5 Dirt Catchers on one 3" pipe.
- 15 Basins or 11 Sinks or 11 Baths or 11 Wash Trays or 11 Urinals or 11 Bidets or 11 Sitz Baths or 7 Water Closets or 7 Slop Sinks or 7 Dirt Catchers on one 3 1/2" pipe.
- 20 Basins or 14 Sinks or 14 Baths or 14 Wash Trays or 14 Urinals or 14 Bidets or 14 Sitz Baths or 9 Water Closets or 9 Slop Sinks or 9 Dirt Catchers on one 4" pipe.

JOINTS OR CONNECTIONS.
SECTION 15. All joints of cast iron pipe shall be packed with picked oakum and run with molten lead and shall be well caulked. Joints and connections in lead pipe shall be made with wiped joints. Connections of lead with cast iron pipe shall be made with brass ferrule and wiped joints, caulked in. Connections of lead and wrought iron pipe shall be made with brass soldering pipe and wiped joints, screwed in. Connections of brass and wrought iron pipe shall be made with a brass screw collar.

WATER CLOSETS.
SECTION 16. The use of pan, hopper or plunger closets is prohibited. No water closet or urinal shall be placed or maintained in any room in which there is not a window opening direct to the external atmosphere. Stop cocks shall be placed on all supply pipes to water closet tanks not less than 1 1/2 inches above the floor.

URINALS.
SECTION 17. All urinals or groups of urinals shall be supplied with water. The floors and sills around all urinals shall be covered with non-corrosive and non-absorbing material.

SAFE WASTE.
SECTION 18. No safe wastes shall be used in conjunction with urinals. Safe wastes from any fixture shall not be connected directly or indirectly with any sewer, house drain, soil or waste pipe.

CLEANOUTS.
SECTION 19. All cleanouts shall be in accessible places, and, where cement floors are laid, they shall be brought up flush with the floor.

SINKS OR WASH TRAYS.
SECTION 20. No sinks or wash trays of wood shall be constructed or used except in hotel or restaurant kitchens or buildings used for industrial purposes and, provided that when constructed or used in hotel or restaurant kitchens or buildings used for industrial purposes, sinks and wash trays may be built of 2" sugar pine and as directed by the Plumbing Inspector.

LAUNDRIES, POI MANUFACTORIES AND STABLES.
SECTION 21. All places used for the manufacture of poi for sale for the washing of carriages, for the stabling of horses and mules and for the washing of clothes at laundries shall be provided with a floor of asphalt or cement mortar masonry, and shall be connected with the public sewer, where such sewer is accessible and where there is no sewer accessible with a cesspool constructed to the approval of the Plumbing Inspector.

In all such places the open end of any drain leading to the sewer shall be covered with a metal screen at least one-fourth of an inch in thickness and so secured in place that it cannot easily be removed. The meshes of such screen shall not exceed one-fourth of an inch in diameter. All such places shall be furnished with an efficient dirt catcher. The discharge pipe from all wash floors, and in all poi factories, shall be trapped and vented.

EXHAUST AND RAIN WATER PIPES.
SECTION 22. No steam exhaust, blow off, drip pipe or rain water pipe shall be connected with the public sewer.

FIXTURES.
SECTION 23. No open end of any waste pipe or water closet shall be placed less than two feet above high tide, as established by the datum used in Government work. No wood work of any description shall be placed around any fixture except for capping or frame.

EXPOSED PLUMBING.
SECTION 24. All pipes and fixtures shall be left exposed to view as much as possible.

INSPECTION OF PLUMBING.
SECTION 25. All house sewer, house drain, soil, waste and vent pipes, inside and outside of buildings, before being covered, shall have all openings stopped and filled with water to the top of the highest vent pipe, and the entire system must be water tight. This test shall be made in the presence of the Plumbing Inspector. No house sewer, house drain, soil waste or vent pipe shall be covered or concealed in any way until after it has been examined and approved by the Plumbing Inspector. Such examination and approval shall be made immediately upon information and notification being received by the Plumbing Inspector. After all fixtures are connected and traps filled with water there shall be a final inspection made by the Plumbing Inspector. In no case shall the Plumbing Inspector accept or approve any job of plumbing work until the same has been made perfectly tight and to conform with this Ordinance.

ISSUANCE OF BLANKS.
SECTION 26. The Plumbing Inspector shall issue to any person, persons, firm or corporation all necessary plumbing blanks.

FILING OF PLANS AND ISSUANCE OF PERMITS.
SECTION 27. After plans have been properly filed and approved by the Plumbing Inspector, he shall issue the required permit to the person, persons, firm or corporation applying therefor.

FEES.
SECTION 28. The Plumbing Inspector shall collect all fees provided for by this Ordinance except license fees, and shall on the last day of each month deposit said fees with the Treasurer of the City and County of Honolulu.

INSPECTION.
SECTION 29. It shall be the duty of the Plumbing Inspector to inspect all plumbing work done in the City and County of Honolulu and if after proper final inspection of any job of plumbing work the same is found to be properly done and to be perfectly tight as required by this Ordinance he shall issue to the proper person, persons, firm or corporation a certificate setting forth the fact that the work has been inspected and the same found to have been done according to the requirements of this Ordinance. The Plumbing Inspector shall have the right and authority to enter any building or go upon any premises where plumbing work is being done at all reasonable hours, to ascertain if the provisions of this Ordinance have been or are being complied with. The Plumbing Inspector shall keep a complete record of all registrations and inspections made and also all permits granted by him as Plumbing Inspector, and make a report of the same each month to the Board of Supervisors.

PENALTY.
SECTION 30. Any person, persons, firm or corporation violating any of the provisions of this Ordinance, shall be deemed guilty of a misdemeanor and upon conviction thereof shall be fined in any sum not exceeding Five Hundred (\$500.00) Dollars or be imprisoned in the Honolulu Jail for a period not exceeding six months.

SECTION 31. This Ordinance shall be in force and take effect from and after the date of its approval.
Introduced by Supervisor
Date of Introduction July 9th, 1909.
Approved this 4th day of August, A. D. 1909.
JOSEPH J. FERN,
Mayor.
10th—Aug. 6, 7, 9, 10, 11, 12, 13, 14, 16, 17.

The Hawaiian Star

DAILY AND SEMI-WEEKLY.

Published every afternoon (except Sunday) by the HAWAIIAN STAR NEWSPAPER ASSOCIATION.

SUBSCRIPTION RATES:

Local, per annum \$ 8.00
 Foreign, per annum 12.00

Payable in Advance.

Entered at Post Office at Honolulu, Hawaii, as second class mail matter.

Subscribers who do not get their papers regularly will confer a favor by notifying the Star Office; Telephone 365.

The Supreme Court of the Territory of Hawaii has declared both THE HAWAIIAN STAR (Daily) and THE SEMI-WEEKLY STAR newspapers of general circulation throughout the Territory of Hawaii, (suitable for advertising proceedings, orders, judgments and decrees entered or rendered in the Courts of the Territory of Hawaii.)

Letters to THE HAWAIIAN STAR should not be addressed to any individual connected with the office, but simply to THE HAWAIIAN STAR, or to the Editorial or Business Departments, according to tenor or purpose.

GEORGE F. HENSHALL, MANAGER

TUESDAY, AUGUST 17, 1909

"It may be it is the best for us; that it is the hand of the Lord; that they have opened the door to citizens to come into the Territory."—Argument of counsel in strike case.

Evidently there are others besides The Star who think that the strike trial will in the end prove to have been a good thing for Hawaii.

The commercial column in The Star yesterday contained a list of pumpling permits,—six of them,—just issued. In not a single case were citizen plumbers employed. Today's list is the same.

The latest test to determine whether you are a neurasthenic or not is to shut your eyes and attempt to jab the end of your nose with your index finger. It is fully explained by a Chicago doctor. It is not necessary to ask the reader to try it,—he will anyhow.

HAWAII EXPERIMENT.

The Fresno Republican says the Hawaiian sugar planters, who are thinking of importing Russians to work their cane fields, will probably find them no better than the Porto Ricans, Portuguese, Spanish and Japanese who preceded them, but the Russian mujiks will have at least the advantage that if they stay in the islands after the planters throw them out of the cane fields, they may become the progenitors of a vigorous white working population for the islands.

And unless there is developed some such population the effort to maintain American, or even European, institutions in Hawaii might as well be given up. In fact, it will probably have to be given up, anyway. You can not maintain large-scale agriculture in any warm country, whether in Hawaii or in California, without a servile class of dark-skinned laborers. Indeed it may almost be asserted that you can not maintain large-scale agriculture in such countries without free Chinese immigration. And you can not maintain Occidental institutions with such immigration. It is simply a choice between changing the system of agriculture or changing the form of government. In Hawaii, probably the agricultural system will survive and the government will fail. In California we hope it will be the agricultural system that fails.

For the best thing the land can raise is men, and any system that devotes it to making money regardless of the sort of men it raises, ought to be terminated, by bankruptcy or otherwise, continues the Republican. Unfortunately, the ruling classes in Hawaii (it is an oligarchy already) regard it as more important to mine money out of their land than to maintain free institutions in their country. They will doubtless succeed in having their way, and even the sturdiness of Russian peasants will not permanently avert the doom of the islands. Fate has probably set the Golden Gate as the permanent outpost of Occidental civilization. But let at least that outpost be held, whether large farming in California becomes profitable or unprofitable; and whether all of our resources are exploited in this generation, or some opportunities are left for our children.

California herself, in the present year, is refuting the argument made in the above article. The last circular of the California Promotion Committee, just at hand, contains the statement that the state's exports this year will be over a billion dollars, and California is an agricultural state,—with a proportion of Oriental population not half the proportion of Porto Ricans in Hawaii. In other words, Orientals are a mere drop in the bucket. The determined stand taken against Oriental immigration shows clearly that they never will be more yet the progress of California's agricultural industries is universally regarded as certain as the coming and going of the seasons.

As to Hawaii, the so-called oligarchy has done more, spent more, proportionately to introduce the sort of agricultural conditions that will plant Occidental civilization on the soil than any other part of the nation. It is true that the "oligarchy"—practically every government or community might be called that, for there is always a small influential class,—has done some things tending the other way, such as substituting Oriental for white labor in mills and other places where skilled citizen labor should be. But these steps are now recognized as errors and the trend is the other way. The point is that the leaders of the sugar industry themselves have just not only submitted to, but invited, a tremendous tax upon themselves alone, for no other purpose than to bring citizenship material to labor on their plantations. By way of inviting a change from the "large-scale" system of agriculture, this same "oligarchy" is giving land for citizen laborers to build homes on, and offering even to aliens the chance to become partners rather than mere employees, on a profit-sharing basis.

The Fresno paper's idea that the Russians, with whom an experiment is now to be made, will be found "no better" than the Portuguese, shows ignorance of local conditions. If the Russians are found to be nearly as good, there will be a quick cry for thousands of them. Spaniards have hardly been fully tried here yet. Porto Ricans have proved largely a failure, and Japanese, while admittedly having done much to build up our main industry, have taken an attitude which, to put it very mildly, greatly lessens their desirability.

There is no apparent reason why the Russian experiment should not be a success. The Russians are a friendly people, an agricultural people, and white. They are likely to prove readily assimilable in our civilization. One great factor in this is that, unlike the Japanese, they have not at home a government to which they are devoted.

A thing for critics like the Fresno paper to remember is that Hawaii is spending and has spent hundreds of thousands of dollars to domicile citizen labor. And the record shows that it did not need the international agreement stopping Japanese immigration to make them do it. They began long before the agreement was made.

Blind pig raids are pretty frequent and successful these days. Of course the sellers nearly always have a federal license.

A local beer advertisement gotten up with some ingenuity uses as its text a German doctor's prescription ordering that Harriman drink beer. As the "Ad" runs, Harriman when shown a prescription containing a very mild distribution of beer over his daily diet, exclaimed: "But I never drank beer in my life." Harriman is sixty-one years of age. He began life as a clerk at the age of 14, after a common school edu-

cation, and by the time he reached sixty was the greatest railroad magnate the world has ever seen. There are certainly two ways of interpreting this Ad.

Commercial News

BY L. D. TIMMONS

Hawaiian Commercial has held the center of the stage in the stock market today, and the prediction in these columns yesterday that the stock would go higher was verified in the early hours of this morning. At the closing hour yesterday \$33.75 was offered for the stock, but none was to be had. The closing was strong and there was a general feeling that something would happen during the night to further advance the stock. Several wires were exchanged with San Francisco, and it is learned from the inside that instructions were received here to buy as low as possible, but—"buy."

This morning only 150 shares of Hawaiian Commercial appeared and it was promptly snapped up at \$34.50. Numerous orders could not be filled, even in cases where leeway was allowed the brokers.

The sale of Hawaiian Commercial at \$34.50 is remarkable, and shows the general confidence felt in the plantation. Brokers deny that the stock is being forced up by San Francisco speculators, and set up the counter claim that the cause of the advance is the splendid showing the plantation has made in the past year and its glowing prospects for the future.

It is interesting to note that the sale at \$34.50 is the highest ever reached by the stock. In the boom days of 1899-1900, when people went stock crazy, the highest figure reached was \$128.50. The basis of the sale this morning was \$129 or nearly \$10 higher than in the days of the boom.

Other stocks remained about the same today as they were yesterday. Pioneer sold for \$186.50, exactly the old quotation. Two blocks of Ewa changed hands at \$31, which was the figure asked yesterday, with no takers at that time. Two blocks of Hawaiian Pineapple sold for \$27.50, the figure asked yesterday. This stock is strong on account of the new tariff in favor of local pines. Oahu shaded slightly, ten shares selling for \$31.75, which was bid yesterday.

THE "HONOLULUAN."
 Percy Morse, local agent of the American-Hawaiian S. S. Company, has received information that the new passenger steamer to be built for the Honolulu-San Francisco run will have the above name. She will be 8,000 tons and will carry 36 first class passengers. The "Honolulan" will arrive here early in the coming year. She will be a Coast ferry, plying exclusive-

(Continued on Page Five.)

BIBLES

Whether you want the King James edition, the 1881 English Revised version or the later American revised version, you will find them herein the best bindings. We also carry a complete assortment of Prayer Books.

Hawaiian News Co., Ltd., Agents
 ALEXANDER YOUNG BUILDING.

New Goods for Men's Suits

A beautiful new stock just arrived in the Alameda. All patterns now being worn in New York and Eastern fashion centers.

W. W. AHANA CO., LTD. 62 KING ST.

FAMILY COAL

WE HAVE A SUPERIOR GRADE OF COAL FOR HOUSEHOLD USE. BY THE SACK OR TON. LOWEST PRICES.

Honolulu Construction & Draying Co., Ltd.
 Fort St. Opposite W. G. Irwin & Co. Phone 281

Meals

such as are served at the PALM are not found in the average restaurant. It requires judgment and a good cook to provide them.
HOTEL NEAR UNION.

Jas. W. Pratt, Telephone 602,
 P. O. Box 451
 125 Merchant Street, adjoining Stangenwald Building.

Real Estate For Sale and Lease
 CITY AND SUBURBAN LOTS. FARMING LANDS.

KODAK

Printing and Developing

AMATEURS! BRING YOUR WORK TO US AND IT WILL BE GIVEN EXPERT ATTENTION. WE ARE OLD TO THE BUSINESS AND UNDERSTAND HOW TO GET THE VERY BEST RESULTS.

Honolulu Photo-Supply Co.

"Everything Photographic." Fort St. below Hotel.

THE BEST SOAP FOR THE HOME LAUNDRY IS

Crystal White Laundry Soap

ASK YOUR GROCER FOR IT.

H. Hackfeld & Co., Ltd.,

WHOLESALE DISTRIBUTERS

From Niihau

BEEF FROM NIIHAU COMES TO US ONLY THREE TIMES A YEAR WHICH MEANS THAT THE CATTLE HAS TIME AND OPPORTUNITY TO FAT-TEN FOR THIS MARKET.

THE SUPPLY JUST RECEIVED IS EXCELLENT.

Metropolitan Market

W. F. Heilbron, Proprietor. Phone 45.

Mosquitoes Come and Go. This is Their Season. If You will Use a "SKEETGO" LAMP You will not be Annoyed by Them.

Benson, Smith & Co., Ltd.

HOTEL AND FORT STREETS.
 'PHONE 297

Why does the FRANKLIN win all the important economy contests and outclass all other automobiles in reliability trials, if it is not the most economical, most efficient and strongest automobile made?

1909 FRANKLIN RECORD CONTEST
 HARRISBURG RELIABILITY AND ENDURANCE TEST.—Franklin Model D won the Governor's Trophy, the highest award of the contest. In this run the Franklin's nearest competitor had 96 points penalization.

NEW YORK AUTOMOBILE TRADE ASSOCIATION ONE-GALLON MILEAGE CONTEST.—The Franklin won its class prize, also grand prize, and established a world's economy record by carrying the greatest load the greatest distance on one gallon of gasoline.

PITTSBURG ENDURANCE RUN.—Franklin Model D was the only automobile to make the run of 450 miles without penalization for repairs or adjustments.

WORCESTER RELIABILITY TRIAL.—Franklin Model D won the only perfect score. The technical examination after the contest eliminated thirteen contestants who had clean road scores.

CLEVELAND ENDURANCE AND ECONOMY CONTEST.—Franklin Model D won the highest award. It had a perfect road score and also the lowest gasoline consumption.

CHICAGO 1000-MILE RELIABILITY TEST.—Franklin Model D won a perfect score. The technical examination after the contest caused the penalization of many entrants.

BRETTON WOODS RELIABILITY RUN.—Franklin Model D won a perfect score. In this run it was the only 1909 stock model that was shipped direct from the factory to the contest route. It went through the 1600-mile grind without a single adjustment.

GLIDDEN TOUR.—Franklin Model D and Model H both won perfect scores. In this contest they were acknowledged to be the easiest-riding of all motor-cars, and they had no tire trouble.

All of which proves that an automobile constructed so that it rides easily is the best automobile mechanically and the most reliable, that great weight is not necessary for strength, that Franklin non-jarring construction and light weight mean comfort, economy and safety, that the Franklin air-cooled engine is without a rival for efficient work and staying power.

Look!!

Mirrors,

Beautiful new line
 All Prices,
 All Sizes



Hollister Drug Co.
 Established 1879.

STEINWAY

STARR AND OTHER PIANOS.
THAYER PIANO CO.
 156 Hotel St., Opp. Young Hotel.
 Phone 218.
 TUNING GUARANTEED.

MANDARIN COATS.
 Some exquisite specimens. Double and single breasted.

HAWAII & SOUTH SEAS CURIO CO.
 Next to Cable office Under electric sign. Bishop Street.

FURNITURE

Your Credit Is Good

J. HOPP & CO. - King St

At JORDAN'S

Fort Street

THE CELEBRATED

MACAM IRENE Corsets

POPULAR MODELS
 —at—
 \$7.50, \$12.50 and \$15.00

WE ARE SHOWING

New Striped Pineapple Silks

OR

Pineapple Silks

In a great variety of colored stripes on white grounds; colors, pink, blue, black and all white.
 65c PER YARD.

Ehlers

G. M. TAI
 King St. Ewa of Nuuanu.

HARDWARE, CROCKERY, FISHING TACKLE, at lowest prices.
 Baseball Goods A Specialty.

ASSOCIATED GARAGE

Agents

AMUSEMENTS.

THE ART

New Feature Film

Vampires of the Ocean

ILLUSTRATED SONGS.

Three changes a week

MONDAY, WEDNESDAY and FRIDAY

AT AUCTION

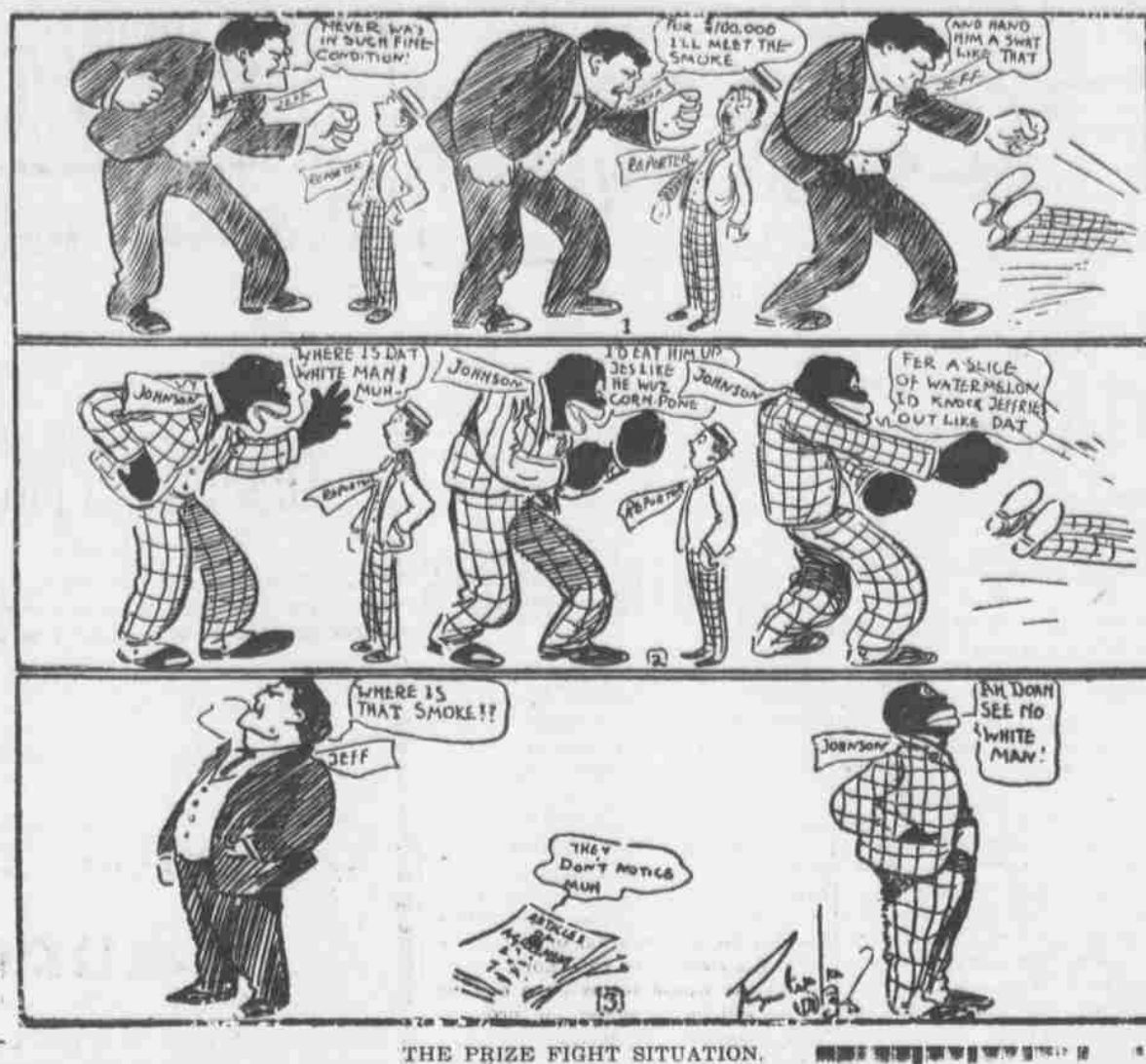
At Sales Rooms adjoining Stangenwald Building, Merchant St.

TUESDAY August 17th, 10 o'clock A. M.

Balance of Damaged Merchandise
Ex S. S. Hilonian.
Household Furniture.
Crockery and Kitchen Ware.
Standard Books and Novels.
One Piano.
Domestic Sewing Machine.

Jas. W. Pratt, AUCTIONEER

JOHN K. COOK
Practical Tailor, Dusheler and Presser.
Gentlemen's Own Cloth Made Up.
Thirty-five Years Experience. Give Me a Call.
Room 4, Oregon Block, Hotel and Union, Entrance 1111 Union.



THE MARVELOUS

Actophone

COMENCING

Thursday, July 29

Gem Theater

Admission.....10c and 20c

GOOD SERVICE IS A BUSINESS ASSET

THE EMPIRE

Siby! Campbell-Reid, the Originator and Champion Spanish Dancer of the Pacific Coast. Will appear until further notice.

GAS

in the kitchen is Money in the Bank.

HONOLULU GAS CO., LTD.

ALEX. YOUNG BLDG. BISHOP ST.

The PARK

Open Air Theater

Motion Pictures

J. B. CARROL
(From the Empire Circuit)
MUSICAL MONOLOGUE ARTIST.

WE invite small accounts. We want the small property owner or investor to see how much it is to his advantage to do business through a Trust Company.

Call at our office and learn how we can serve you. A consultation will cost you **NOTHING**

Bishop Trust Co., Ltd.,
Bethel Street

ORPHEUM

The Big Show For Little Money

Moving Pictures and Vaudeville

Complete changes of bill Mondays and Wednesdays.

General Admission10c
Reserved Chairs15 and 25c
Matinee—Wednesday and Saturday.
Reserved Seats, 10c.

Seats can be reserved in advance—Phone 681.

BY AUTHORITY

RESOLUTION.

Be It Resolved, by the Board of Supervisors of the City and County of Honolulu, That the sum of two hundred and fifty (\$250.00) dollars be appropriated out of the General Fund each month, for the six months beginning July 1, 1909, for a donation to the Hawaii Promotion Committee.

Introduced by Supervisor Daniel Logan.
Dated July 20, 1909.
Approved this 4th day of August, A. D. 1909.

JOSEPH J. FERN, Mayor.

10th—Aug. 6, 7, 9, 10, 11, 12, 13, 14, 16, 17

Fine Job Printing, Star Office.

COMMERCIAL NEWS

(Continued from Page Four.)

modation for a long time to come; but the remarkable increase of tourist travel this year, which has had continuation through the dull months of the year—has shown that the Moana will soon be unable alone to fill the demand. In the natural order of things—judging by the summer travel—the Moana will be crowded to the limit this winter; and the day when an extra room will be a pressing necessity is close at hand. In preparing in advance for the rush Mr. Young shows himself to be in the lead in the march of progress and the effort to make this the tourist's paradise.

THE HILO HOTEL.
George Lycurgus: "The renovated Hilo hotel will be thrown open shortly after the middle of September. There will be thirty-six first class rooms, enough, we think, to supply the immediate needs of the second city. Fred Harrison has had charge of the work of renovating the hostelry and has made a good job of it."
"We are preparing at the Volcano House for a big rush of tourist travel this winter. The main house will be extended and we will build one more large cottage. In all, fifteen rooms will be added to the present accommodations there. The indications are that we will have an immense travel in the direction of the volcano from now on and we will do our best to make every body comfortable."
"In this connection I wish to say that the Promotion Committee is certainly doing a grand work. In my recent travels I ran across literature everywhere which was sent out from here notably at Athens and at Cork, it being conspicuously displayed at each of these places. I am more than satisfied that the committee is going a grand work."

CONGRESSIONAL TOURS.
The Mauna Kea will be a very busy boat while the Congressional party is here. In fact, on account of her engagements as an official excursion steamer, the special excursion to Kaula, scheduled for next month, has been postponed indefinitely. President Kennedy this morning completed the following schedule of the cruises of the Mauna Kea while the Congressmen are here:
Sunday, September 5—Leave Honolulu about 10 p. m. for Kaula, going around the island, stopping at the principal ports and arriving back here Tuesday morning, September 7th.
Tuesday, September 7—Leave Honolulu at noon and going direct to Napoosoo. Such passengers as desire will land there and travel overland to Kaula, the Mauna Kea picking them up there. From Kaula the excursion boat will sail direct for Laupahoehoe and Hilo, arriving at the latter place about 6 p. m. September 8, about eight hours behind regular time. Hilo will be left behind Thursday morning and Honolulu will be reached early Friday morning, September 10.
Friday, September 10—Leave Honolulu in the early evening, going direct to Hilo. Leave Hilo Saturday night for Hana, landing such passengers there as may desire to visit the rubber estates, Sunday morning. Proceed to Kahului and land remainder of passengers. Arrive back in Honolulu Sunday night.
Monday afternoon, September 13—Leave Honolulu at 3 o'clock for Lahaina where the party will be picked up and brought back to Honolulu.

PLUMBING PERMITS.
Plumbing permits issued this morning were:
Dr. O. E. Wall, one story residence, Hassinger near Pihkol. M. Tanaka, plumber.
George Beckley, Jr., garage, corner Hotel and Alakea. F. Matsushita, plumber.
Dr. Wall, who is employing a Japanese to do his plumbing, is the well known dentist. Young Beckley is putting in a garage on the property of Mrs. Brown at the corner of Hotel and Alakea streets, across from the Masonic Temple.
The new plumbing ordinance goes into effect tomorrow morning. Under it contractors for plumbing will be required to register, get a license and to file bonds in the sum of \$500. The larger plumbing establishments are highly pleased with the new law. Some of the smaller men claim, however, that the law is one for the big man.

PAPERS FILED.
Several papers of interest have been filed at bureau of conveyances since yesterday. One of these was the release by the German Savings & Loan Society of the mortgage held by it against the Kapiolani Estate. This mortgage which was for \$300,000, was given in 1902. A few mortgages to the trustees of the James Campbell Estate for \$200,000 was filed a short time ago, the sum then realized being used to pay off the San Francisco mortgage. Papers filed at the registrar's office were:
Virginia E. Lynch to Clarence W. Ashford et al, deed.
German Savings & Loan Society to Kapiolani Estate, Ltd., release.
Mary E. Clark and husband to S. N. Castle Estate, Ltd., exchange deed and mortgage.
Mutual Building & Loan Society of Hawaii to Albert McGinn, release.
Claus Spreckels and Company to W. C. Peacock & Co., release.
Laura M. Kekouohikapulikoiko, tr. to Libert H. Boeynaems, tr. mortgage.

NEW GAS PLANT.
Workmen have about finished installing the new gas plant in Iwalei and in a short time the company will be in

position to cater more fully than ever to the requirements of the public. The plant over there had been left behind by the growing business of the concern, and for some time larger facilities have been badly needed. The new plant practically doubles the capacity of the works.

MORGAN TO TRAVEL.
President James F. Morgan, of the Chamber of Commerce, will sail in the Alameda for a tour of some two months in the States, going as far east as New York city. He has felt the strain of business for some time and regards a respite as essential to his health. Returning from the Atlantic side, Mr. Morgan will call in at Seattle about September 15 and there arrange for packing the Hawaiian exhibit sent to the exposition and returning it to the islands.

TO BUILD NEW BARN.
The news comes from Hawaii that the crop of the Kona Tobacco Company this year is so large that another large barn will have to be built at once, this being the fourth to be erected there. The new tariff law has been hailed with joy by the tobacco growers of Kona, for it places a heavier-duty on wrapper tobacco—the kind that is being grown over there. It will mean many thousands of dollars to the growers and they are already planning to make the most of it. The new barn above referred to is the first move in preparation for the boom expected as a result of the recent Congressional enactment.

ESTATE MRS. PRISCILLA E. HASSINGER.
Notice is hereby given to all persons having claims against the Estate of Mrs. Priscilla E. Hassinger, late of Honolulu, deceased, to present the same to the undersigned Administrator at his office, Judd Building, Honolulu, within six months from the date of the publication of this notice. All claims not so presented will be forever barred.

WILLIAM O. SMITH,
Administrator of the Estate of Priscilla E. Hassinger, Deceased.
Honolulu, August 10, 1909.
4th—Aug. 10, 17, 24, 31.

IN THE CIRCUIT COURT, FIRST CIRCUIT, TERRITORY OF HAWAII.
In Probate—At Chambers, No. 4105. In the Matter of the Estate of Mary Edgell Goodale, Deceased.
On Reading and Filing the Petition and accounts of Hawaiian Trust Co., Ltd., Ancillary Administrator of the Estate of Mary Edgell Goodale, deceased, wherein petitioner asks to be allowed \$183.30 and charged with \$399.00 and asks that the same be examined and approved, and that a final order be made of Distribution of the remaining property to the persons thereto entitled and discharging petitioner from all further responsibility herein:
It is ordered that Monday, the 27th day of September, A. D. 1909, at 10 o'clock a. m. before the Judge presiding at Chambers of said Court at this Court Room in the Judiciary Building, in Honolulu, County of Honolulu, be and the same hereby is appointed the time and place for hearing said Petition and Accounts, and that all persons interested may then and there appear and show cause, if any they have, why the same should not be granted, and may present evidence as to who are entitled to the said property.
Dated the 17th day of August, 1909.
BY THE COURT:
M. T. SIMONTON,
Clerk of the Circuit Court of the First Circuit.
4th—Aug. 17, 24, 31; Sept. 7.

ESTATE MRS. PRISCILLA E. HASSINGER.
Notice is hereby given to all persons having claims against the Estate of Mrs. Priscilla E. Hassinger, late of Honolulu, deceased, to present the same to the undersigned Administrator at his office, Judd Building, Honolulu, within six months from the date of the publication of this notice. All claims not so presented will be forever barred.

WILLIAM O. SMITH,
Administrator of the Estate of Priscilla E. Hassinger, Deceased.
Honolulu, August 10, 1909.
4th—Aug. 10, 17, 24, 31.

IN THE CIRCUIT COURT OF THE FIRST CIRCUIT, TERRITORY OF HAWAII.
At Chambers—In Probate.
In the Matter of the Estate of Elizabeth Kalanipahao (w) deceased.
On Reading and Filing the Petition of Likikalani Fern, a sister, of Honolulu, Oahu, alleging that Elizabeth Kalanipahao of Honolulu, Oahu died testate at Kailua, Honolulu, Oahu on the 30th day of December A. D. 1908 leaving property in the Hawaiian Islands necessary to be administered upon, to wit, cash amounting to \$400 and real estate worth \$200 and praying that Letters of Administration issue to her the said Likikalani Fern.
It is Ordered that Monday, the 23rd day of August A. D. 1909, at 10 o'clock a. m. be and hereby is appointed for hearing said Petition in the Court Room of this Court at Honolulu, Oahu, at which time and place all persons concerned may appear and show cause, if any they have, why said Petition should not be granted.
Dated at Honolulu, T. H., July 26, 1909.
By the Court:
Attest: V. M. HARRISON,
Asst. Clerk of the Circuit Court of the First Circuit.
W. C. Aebi, Attorney for the Petitioner.
4th—July 27, Aug. 3, 10, 17.

DAILY STOCK REPORT.
Session Sales: 150 Haw. C. & S. Co. \$34.50; 20 Ewa \$31.00; 10 Oahu Sugar Co. \$31.75.
Between boards: 15 Pioneer \$186.50; 50 Ewa \$31.00; 125 Ewa \$31.00; 40 Haw. Pineapple Co. \$27.50; 5 Haw. Pineapple Co. \$27.50; \$2,000 Oahu Sugar \$5, \$101.00.

Stock.	Bid.	Asked.
Ewa Plant Co.	31.00	31.25
Hawaiian Agri.	180.00	185.00
Haw. C. & S. Co.	34.50	35.00
Hawaiian Sugar Co.	48.00	
Honokaa Sugar Co.	18.50	18.75
Haiku Sugar Co.	255.00	
Hutchinson	17.50	18.50
Koaloa Sugar Co.	150.00	
McBryde Sugar Co.	3.50	4.00
Oahu Sugar Co.	31.75	32.00
Onomea Sugar Co.	50.00	
Olaa Sugar Co.	4.75	
Paunahau Sug. Co.	28.00	
Pala Plant Co.	255.00	262.50
Pioneer Mill Co.	185.50	187.00
Waialua Agri. Co.	109.00	109.25
Walmanalo	265.00	
I. I. S. N. Co.	109.25	11.00
Haw. Electric Co.	145.00	
Hon. R. T. Co. com.	80.00	
Nahiku Rub. Co.	42.50	
O. R. & L. Co.	135.00	
Hilo R. R. Co.	11.00	14.50
Hon. B. & M. Co.	21.50	22.50
Haw. Pineapple Co.	27.00	27.50
Cal. Ref. Co. 6s.	101.50	
Haw. Tr. Co. 6s.	97.50	
Haw. C. & S. Co. 6s.	104.50	
Hilo R. R. Co. 6s.	97.00	
Honokaa 6s.	102.50	103.00
McBryde 6s.	97.50	
O. R. & L. Co. 5s.	100.75	

Sugar, 4.08c
Beet, 1 1/2, 2 1-4d

Henry Waterhouse Trust Co.
Members Honolulu Stock and Bond Exchange.
FORT AND MERCHANT STS.
TELEPHONE 736

LATEST SHIPPING

Honolulu, August 17.
ARRIVED SINCE 2 P. M. YESTERDAY.
S. S. China, from Yokohama, a. m.
S. S. Makura, from Sydney, a. m.
Str. Kaula, from Hawaii, noon.
Sch. Dauntless, from Grays Harbor, a. m.
SAILED SINCE 2 P. M. YESTERDAY.
Str. Iwalani, for Hawaii and Maui, 9 a. m.
Str. Mauna Kea, for Maui and Hilo, 12 m.
S. S. Hyades, for Kahului and Elele, a. m.
Str. Mokoli, for Koolau ports, 2 p. m.
SAILING TODAY.
S. S. China, for San Francisco, 6 p. m.
S. S. Makura, for Victoria, 5 p. m.
Str. Kinau, for Kaula ports, 5 p. m.
Str. Mikahala, for Maui and Molokai, 5 p. m.
Sch. Ka Mol for Maui and Hawaii, 8 p. m.
Str. Kaula, for Mahukona and Kawaihae, 5 p. m.
DUE TOMORROW.
Str. W. G. Hall, from Kaula ports, a. m.
SAILING TOMORROW.
S. S. Alameda, for San Francisco, 10 a. m.
Str. Likelike, for Honokaa, 12 m.
Str. Helene, for Kohalalele, Ookala, Laupahoehoe and Papaloa, 12 m.
LOADING TOMORROW.
Str. W. G. Hall, for Kaula ports.
Str. Helene, for Hawaii ports.
Str. Likelike, for Honokaa.
S. S. Virginia, for Salina Crud, via Island ports.
CABLE REPORT.
Tuesday, August 17.
Salina Cruz—Arrived, August 15. S. S. Columbian, from Hilo July 31.
Newcastle—Sailed August 14. S. S. Zambesi, for Honolulu.
Redondo—Arrived August 16. Sch. Balboa, from Hilo, July 12.
San Francisco—Sailed August 17. 2 p. m. S. S. Nippon Maru, for Honolulu.

New Advertisements

ANNUAL MEETING.
HONOLULU CHAMBER OF COMMERCE.
The Annual Meeting of the members of the Honolulu Chamber of Commerce, for the election of Officers and Trustees to serve for the ensuing year and for the transaction of such other business as may properly come before the meeting, will be held in the rooms of the Chamber, Stangenwald Building, Honolulu, at 3 p. m., Wednesday, August 18th, 1909.
H. P. WOOD,
Secretary Honolulu Chamber of Commerce.

LEADING HAT CLEANERS
1154 Fort Street, opp. Convent
All kinds of Hats Cleaned and Blocked. We sell the Latest Styles of Porto Rico Panama and felt Hats. All work Guaranteed. Called for and Delivered on Short Notice. Prices Moderate.

FELIX TURRO, Specialist.

NOTICE TO CREDITORS.
ESTATE MRS. PRISCILLA E. HASSINGER.
Notice is hereby given to all persons having claims against the Estate of Mrs. Priscilla E. Hassinger, late of Honolulu, deceased, to present the same to the undersigned Administrator at his office, Judd Building, Honolulu, within six months from the date of the publication of this notice. All claims not so presented will be forever barred.

WATERHOUSE TRUST

For Rent

Anapuni Street.....\$31.50
Matlock Avenue..... 20.00
Lunalilo Street..... 35.00
Lunalilo Street..... 23.00
Kalakaua Avenue..... 20.00
Hereiana Street..... 20.00
Magazine Street..... 27.50
Nuuanu Avenue..... 15.00
Wilder Avenue..... 15.00

"Waterhouse Trust"
Corner Fort and Merchant Streets.

For Quick Communication
USE
WIRELESS

Classified Advertising

WANTED.
To buy a good second-hand nickel plating outfit. Address P. O. 223, stating price and where same can be seen.

PIANO-TUNING AND REPAIRING.
James Sheridan, tuner and repairing of pianos and organs. No. 15a, Hotel street, orders left at Hawaiian News Co., Young building. Good pianos to rent or sell at cheapest rates.

WANTED TO BUY
Old books, magazines, Hawaiian stamps and curios. Books exchanged. Weedon Curlo Bazaar, Masonic Temple, Alakea street.

FOR RENT.
First class furnished rooms centrally located. Hot and cold baths. Arlington Hotel, 215 Hotel St.

LOST
A bicycle evidently taken by mistake from in front of J. M. Levy & Co., Grocers. Please return to Star Office.

NOTICE.
Notice is hereby given that the undersigned has bought the business of Mee Hong Restaurant on Fort street near Church, Hilo, Hawaii, and that he is not responsible for any bill against said restaurant prior to that date.

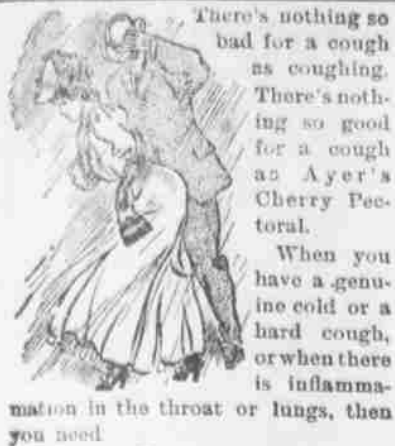
YOCK CHONG.
Dated Hilo, August 15, 1909.

NOTICE.
Mr. George F. Davies has been appointed Acting British Consul during my absence from Honolulu.
RALPH G. E. FORSTER,
H. B. M. Consul Officiating.
British Consulate,
Honolulu, August 16, 1909.

NOTICE TO STOCKHOLDERS.
OAHU RAILWAY & LAND CO.
The annual meeting of the stockholders of the Oahu Railway & Land Co. has been called for Wednesday, August 18th, A. D. 1909, in pursuance of an order of the directors, and will be held at the office of The B. F. Dillingham Co., Ltd., Stangenwald Building, Honolulu, at 10:30 o'clock a. m. on that date.
A. W. VAN VALKENBURG,
Secretary, Oahu Railway & Land Co.
Honolulu, August 13, 1909.
3th—Aug. 14, 16, 17.

STOCKBOOKS CLOSED
OAHU RAILWAY & LAND CO.
The stock books of the Oahu Railway and Land Co. will be closed to transfers from August 14th to 14th, inclusive.
W. F. DILLINGHAM,
Treasurer.
Honolulu, T. H., August 13, 1909.
3th—Aug. 14, 16, 17.

CHRISTIAN SCIENCE.
The Honolulu Christian Science Society will hold services in Fraternity hall, Odd Fellows' building, on and after Sunday, August 15. Morning service on Sunday at 11 o'clock and Wednesday evenings at 8 o'clock. The reading room is open daily except holidays in the same hall from 10:30 a. m. to 12:30 p. m. All are welcome to both services and reading rooms.



There's nothing so bad for a cough as coughing. There's nothing so good for a cough as Ayer's Cherry Pectoral.

When you have a genuine cold or a hard cough, or when there is inflammation in the throat or lungs, then you need Ayer's Cherry Pectoral.

Prepared by Dr. J. C. Ayer & Co., Lowell, Mass., U. S. A.

TANKS

There's no tank that can come up to a REDWOOD ROUND HOOP TANK.

We carry a full line of sizes at the Lowest Prices. Every Tank Guaranteed.

Lewers & Cooke, Ltd., 177 S. King St. Phone 775.

68 HOURS To Chicago From San Francisco, The Fastest transcontinental train.

OVERLAND LIMITED

Electric Lighted, Buffet, Library and Drawing Room compartment, observation car, with diner. Telegraphic news posted on train.

Southern Pacific

NEW ARRIVALS IN SILK GOOD

For years our line of silk goods has been the best in town and our last shipment proved no exception.

Iwakami & Co., - Hotel St.

Watch Repairing

DONE BY US IS FULLY GUARANTEED

Popular Prices

J. A. R. Vieira & Co. 115 Hotel St. Phone 512

It is expected that the Kohala forest reserve business, which has been in abeyance for five years, will be decided at the meeting of the Board of Agriculture and Forestry this afternoon.



SPORTS

TEN MILE RACE IS BEING TALKED ABOUT

Honolulu's next big sporting carnival will take place on Labor Day, which falls on September 6.

The big doings will be at the Athletic Park and will be spread over the entire day.

In the morning there will probably be a ten-mile race for the championship of the Territory. In the afternoon there will be baseball games between the St. Louis and Diamond Head nines, and the Asahis and C. A. C. Jrs.

The ten-mile race idea is a good one and the affair should be well entered for. The Marathon distance is altogether too killing for this warm climate, whereas, ten miles can be run by a man in training without his being laid up for a week afterward.

Nigel Jackson would enter such a race as he is anxious to win back the laurels he lost to the Japanese runner at Hilo last month. There should

be no difficulty experienced in getting the Jap to enter the race, and if only these two competed for the prize the contest would be well worth witnessing.

Dai Fahy has expressed himself as wanting to have another crack at the ten-mile game and intends to go into training as soon as definite announcement of the race is made.

The three Chinese Charlie, the Kaimuki milkman, who running quite untrained, made such a good showing in the Marathon run at the ball park. He would be a great attraction and while perhaps a bit shy of speed in such a game little plunger that he would be bound to be there or thereabouts at the finish.

Talking about the Athletic Park, the management has arranged for a free motion picture show to be given there tomorrow night, commencing at 7 o'clock.

How Riverside Games Were Won And Lost

A big Sunday crowd were present at Aala Park on Sunday afternoon, where two exceptional good games were played between the Aalas and Kewalos; and the Fort Shalters and the Palamas.

In the first game the former team defeated the Atkinson League champions by the score of 5 to 3, and in the second, Lieut. Bowen's aggregation of roadpounders won from the Palamas for the second time in the first series by the close score of 3 to 1.

The first game started with the Eheus at bat. There was no scoring by either team in the first spasm, but in both the second and third innings, the Aalas romped once in each. In the second inning, Bob Chillingworth scored the first run by a walk and two pretty steals and romped on an error of Souza at third, who let the ball pass him when Joseph made an attempt to put Bob out.

Then in the third round Limahema got safe on a poor throw of Freitas from short to first, which gave him an opportunity to reach second. Henry Chillingworth sacrificed him to third and Kalmi wetted the ball and sent him home with another run. There was no further scoring until the sixth, when Hardee, Medcraft, the Bob Chillingworth and Butler passed the home plate. Deponte, the twirling

artist for the Kewalos led the balloon ascension act in this inning and Freitas came to the rescue in the seventh.

Souza, Joseph and Joseph scored the only runs for the Kewalos in the seventh. There was no scoring after this and the game ended with another victory for Hoopli's men.

FORT SHALTERS VS. PALAMAS.

The Fort Shalters scored another victory over the Palamas in the second game. For five innings, neither team managed to send a man across the plate and everyone was expecting an extra inning game, but in the sixth, the roadpounders came through with two runs. Santen got first by being hit by the pitcher and Strauss sacrificed him to second. McCall binged Santen to third and Lemm sent both Santen and McCall in with a pretty hit to centerfield.

The Palamas made their only run in the eighth. Bolster binged and did the burglarizing act twice. Kualii then came in with a timely bingle which sent Bolster in. Gongol romped in the ninth inning for the Shalters. This made the score 3 to 1 in favor of Lieut. Bowen's team and as there was no scoring by the Palamas in the ninth, the game ended as above.

HAHALALU FURNISHED SPORT FOR ANGLERS

Fishing with rod and line along the shore-line of Oahu is getting better now and promises to hold good until the boisterous weather of the autumn equinox.

Local rodmen have had fair sport with the ahalalu during the past two weeks. The fish have frequented the water near the boat landing and at times have bitten well although in size they have been unusually small.

Last year just as soon as the school came into the harbor a lot of Chinese fishermen surrounded it and netted thousand upon thousand of the little fish. This state of affairs has been prevented this year thanks to the action of the Superintendent of Public Works in stopping netting in the harbor.

The ahalalu will probably remain about the wharves for a couple of weeks more and in that time they will increase in size appreciably. After a while the school will retire to the middle of the harbor and remain thereabouts, until one day they will head for the open sea and no more of the ahalalu will be seen in the harbor till next August.

The ahalalu or little akule are as regular in their movements as the migratory birds and old waterfronters can predict their coming almost to a day, though why they come into the harbor and why they go to sea again, they do not profess to know.

When the ahalalu arrives there is fish for everybody. Old and young, men and women, haoles, Hawaiian, Japanese and Chinese all grab a bamboo and a line and hook and tie them to the wharf near which the school has been located.

A shrimp is the best bait. As soon as a fish has been hooked there is no further plitika about bait for the little akule are fierce cannibals and like a

morsel of a brother's flesh as well as they do anything else.

The crowd get to the fishing crowd early and wait patiently for the fish to commence to move. The coming of the school is heralded by the ruffled surface of the water. Just before sun up, when the gray mist is rising from the water, the fish commence to bite and keep on feeding for an hour or an hour and a half.

There may be forty fishermen in a line and one, all along the line, the poles will be jerked up and fish after fish haulen out.

The ahalalu travel round and round the slip and every angler gets his regular visit from the hungry little fish.

It is interesting to watch the actions of the fishermen on getting a bite. Here a boy will haul his fish out with such force that it smashes against the shed behind him. There an old man who has enjoyed sport in many waters will play the little fellow on his hook as delicately as if it were a trout.

Out Waianae way some good catches have been made of late. Last Sunday a local angler caught nearly fifty mamamo, a game little fish, which furnishes great sport when biting freely.

To fish for the mamamo no lead must be used on the line, which must be of fine quality. A very small hook must also be used, for the mamamo is a timorous fish although a bold biter when unalarmed. A husked shrimp is placed on the hook and the line is cast and allowed to drift with the current. As soon as the fish has taken the bait the line tautens instantly. The fish must be carefully handled after being hooked for its mouth is very tender and the hook is easily jerked out.

were they that a fisherman hooking a mamamo or other small fish frequently had his catch stolen from the hook before he could land it.

Some of the aha were of great size and a fisherman, properly equipped with strong tackle, would have had the sport of his life on a certain spot on the reef off Waianae beach last Sunday.

SPORTIVE JOSHERS

Wee Betty strayed away from home. Her pa began to fret. Although he'd not been gambling, he had lost a little bet.

An exchange states that a man in Oregon caught a big trout in which when he dressed it, he found two railroad spikes. It is our firm opinion that at some time in its life that fish was in a railroad wreck.

There is some talk of having baseball by electric light in Honolulu. It will have its advantages. For instance, when the home team is losing, some fan can quietly cut the wires.

Three Chinamen had a fight on Tanialua yesterday. All three, it may be said, came out on top.

The auto fiend laughed in glee. "It's fine to scare people," said he. But a cop on his trail. Took the fellow to jail. It surely was fine next day, see?

There's a minister in San Francisco named Pinch. He really should be a policeman.

SPORTDRIFT

High tide large at 4:45 p. m. today.

Espinda Akana will look after the grounds for the Goldsmith Baseball League.

Tommy Lane and his fifteen (count 'em) stitches are one of the attractions of the Rialto these days.

The Honolulu Athletic Park management certainly seem to have the dead-wood on the attendance.

The inter-island tennis tournament has been postponed until a week from tomorrow.

Excellent surfing is being enjoyed at Waikiki these days. The breakers are rolling in high to quote Sunny Cunha.

Henry Aki, Ho Lim, G. Addison and Sawal have been appointed a committee to draft a constitution and by-laws for the Goldsmith Baseball League. The league proposes to start its series about two weeks from now.

John Amoy will in future captain the baseball team of the Chinese Athletic Association of the Riverside League. A better man for the position it would be hard to find.

The All-Hilo ball team by defeating Honolulu and then Maui, seem to have some claim to the inter-island championship. A series of games between them and a picked Honolulu nine should be well worth while.

President C. B. Cottrell of the Kapoianai Baseball League this morning delivered the prize cup to Captain Paul Burns of the Kaili Athletic Club, the winners of the trophy and league championship.

At a meeting of the Goldsmith Baseball League held last night the following permanent officers were elected: A. L. C. Atkinson, president; W. Tin Chong, vice president; Sam Kanoe, recording secretary; L. D. Timmons, corresponding secretary; Sawal, treasurer.

Quite the fiercest thing of yesterday was the Cordell trio which performed along the Hotel street circuit with enthusiasm and eclat. The personnel of the trio was Tommy Lane, A) (Mutt) Heine and Jack Cordell. They made a great hit with those popular melodies, "Sun-Bonnet Sue," and "Come to the Land of Bohemia," especially with the policemen on the beat. It is said that the trio have been booked for a lengthy and remunerative engagement on the local motion picture circuit.

SOLD THE WORLD OVER.

"We have in stock many colic and diarrhoea medicines," says R. M. White a prominent merchant of Turtle Bayou, Tex., U. S. A., "but sell more of Chamberlain's Colic, Cholera and Diarrhoea Remedy than of all others put together. For sale by all dealers, Benson, Smith & Co., agents for Hawaii.

Fine Job Printing, Star Office.

PANAMA IGNORES REQUESTS OF U. S.

REFUSES TO GIVE JUSTICE TO CITIZENS AND SOLDIERS WHO HAVE BEEN MISTREATED.

WASHINGTON, July 26.—Panama's attitude in failing to take proper notice of the mistreatment of American citizens within her borders during the past two years and a half has irritated the United States Government to the point of insisting upon the prompt settlement of these cases to the satisfaction of the State Department.

Apparently reliable testimony showing unprovoked assaults and rough treatment of American citizens, including naval officers, during the past two years and a half has been presented to the Panama government, with a view to obtaining prompt apology, punishment of the offenders, compensation for injury or death and police reform, but all to no purpose. Only the most unsatisfactory replies have been received from Panama.

The attitude of the government of the Isthmian republic is inexplicable to the State Department officials, who have asked nothing more than that simple justice shall be meted out with proper reparation for the families of those who have suffered. Manager Herbert G. Squires has been instructed to urge insistently to satisfy settlement of these cases.

While the United States government has no idea, as far as can be learned, of intervening in Panama affairs with a view to maintaining order, yet it clearly has the right to do so should Panama fail to maintain public order in the cities of Panama and Colon and in the territories and harbors adjacent thereto.

This right is given by article 7 of the treaty of 1903. The disposition of this government is to give Panama every opportunity to prove itself equal to the task of protecting life and property within its borders, and intervention would be resorted to only as a last resort.

On four different occasions Americans have suffered at the hands of Panamanians, and in none of these cases has this government been able to obtain any satisfaction from Panama. One instance cited was an assault on W. B. Warner, an employee of the Isthmian Canal Commission, who, it is alleged, was brutally clubbed and otherwise severely handled by the Colon police on December 25, 1906.

Several American officers of the cruiser Columbia in uniform were arrested in Colon on June 1, 1906, without sufficient cause it is alleged. They were roughly handled and clubbed and then thrown into jail, where they were left for several hours without proper medical attention.

The attack it is said, was unprovoked. No steps have been taken by Panama to comply with a demand that an indemnity be paid to the officers. Panama, seemingly, having disclaimed all blame in the matter.

Boatswain's Mate Charles Rand was killed, and Joseph Clesik, a sailor of the cruiser Buffalo, was injured as the result of a fight with the Panama police on September 28, 1908. From the evidence in this case there appears to be no doubt, according to the State Department, that the two men were brutally treated by the police, who clubbed, handcuffed and dragged Rand through the streets, badly wounded. It is further alleged that while he was in police custody Rand was allotted to lie suffering and bleeding in the jail for more than an hour without medical attention. Similar treatment is said to have been given Clesik.

Last May Charles M. Abbott, white, and John Williams, negro, both Americans, were killed in a riot, the former by a roiter and the latter by a rifle shot supposed to have been fired by a member of the Colon police force. Neither of these men it is said, appears to have taken any part in the disturbance.

A WEAK HEART weakens every other organ of the body, for they all depend upon the heart to furnish them with an abundance of the pure life-giving fluid. To give the heart power to do this, Dr. Miles' Heart Cure has no equal. It strengthens and regulates the heart action, and furnishes nerve power, the vital element. Money back if first bottle fails to benefit.

Fine Job Printing, Star Office.

Mechanical Drawing Materials Agents Frederick Post & Co. A. B. ARLEIGH & CO., LTD. Hotel Street, opp. Union.

FINE ROLLS AND CAKES, BUNS, PIES and all the delicacies of the table at ASAHI BAKERY Beretania near Alakoa.



The "Iron Hammer"

is buried and the strike is over, but the dandruff germ buried at the roots of your hair is still actively engaged in destroying your hair.

PACHECO'S DANDRUFF KILLER will positively cleanse your scalp of all impurities and disease. Try it.

Sold by all druggists and at Pacheco's Barber Shop. Phone 232.



Leather or Cane Seat, Solid Oak, \$1.00



A Seattle Kitchen Queen. The Best Table Made \$4.50



Solid Oak Golden or Weathered... \$13.50 up

BARGAINS AT

GOYNE'S

YOUNG BUILDING.

Y. Yoshikawa

163 King Street, opp. Young Building. Good, new bicycle, \$25; second hand, any kind, cheap. Tricycles for sale. Motorcycles repaired and re-tired.

The Regal

are the shoes that prove. REGAL SHOE STORE King and Bethel Streets.

Why have your Typewriter tinkered with by inexperienced men? Let us do it! We are fully equipped for this particular work and we employ only experienced repairers.

Office Supply Co., Ltd. 251 Fort Street. Phone 143.

Primo The Beer that's brewed to suit the climate.

Fraternal Meetings

HONOLULU LODGE No. 616, B. P. O. ELKS. Meets in their hall on King Street, near Fort, every Friday evening. Visiting Brothers are cordially invited to attend. E. A. DOUTHITT, E. R. H. C. EASTON, Secretary.

HARMONY LODGE No. 3, I. O. O. F.

Meets every Monday evening at 7:30 in Odd Fellows' Hall, Fort Street. Visiting brothers cordially invited to attend. F. D. WITKE, N. G. E. R. HENDRY, Sec.

DIVISION No. 1, A. O. H.

DIVISION No. 1, A. O. H. Meets every first and third Wednesday, at 8 p. m., in C. B. U. Hall, Fort Street. Visiting brothers are cordially invited to attend. FRANK D. CREEDON, Pres. JAMES T. CAREY, Sec.

CONKLIN Self-Filling FOUNTAIN PENS. OAT & MOSSMAN Merchant St. near Postoffice.

C. BREWER & CO., LTD. QUEEN STREET, Honolulu, T. H.

AGENTS FOR

Hawaiian Agricultural Company, Oonema Sugar Company, Honoumuli Sugar Company, Walluku Sugar Company, Ookala Sugar Plantation Company, Pepeekeo Sugar Co., Kapapala Ranch.

Charles M. Cooke, President. Geo. H. Robertson, V. Pres. & Mgr. E. Faxon Bishop, Treas. & Secy. F. W. Macfarlane, Auditor. P. C. Jones, Director. C. H. Cooke, Director. J. R. Galt, Director. All of the above named constitute the Board of Directors.

W. G. IRWIN & Co.

AGENTS FOR THE

Royal Insurance Co. of Liverpool, Eng. Scottish Union & National Ins. Co., of Edinburgh, Scotland. Commercial Union Assurance Co. of London. The Upper Rhine Ins. Co., Ltd.

Fire Insurance

ATLAS ASSURANCE COMPANY OF LONDON. NEW YORK UNDERWRITERS AGENCY. PROVIDENCE WASHINGTON INSURANCE COMPANY.

The B. F. Dillingham Co., Ltd. General Agents for Hawaii. Fourth Floor, Stangenwald Building.

USE Sweet Violet BUTTER

C. Q. YEE HOP TEL. 251

ALEXANDER & BALDWIN LTD

OFFICERS and DIRECTORS.

H. P. BALDWIN, President. J. B. CASTLE, 1st Vice-President. W. M. Alexander, 2nd Vice-President. J. P. Cooke, 3rd Vice-Pres. & Mgr. J. Waterhouse, Treasurer. E. E. Faxton, Secretary. W. O. Smith, Director. J. R. Galt, Director. W. R. Castle, Director.

SUGAR FACTORS AND COMMISSION MERCHANTS

AGENTS FOR

Hawaiian Commercial & Sugar Company. Haku Sugar Company. Paia Plantation. Maui Agricultural Company. Hawaiian Sugar Company. Kahuku Plantation Company. Kahului Railroad Company. Haleakala Ranch Company. Honolulu Ranch.

BEAUTIFUL ROCKERS

Chairs, Bureaus and Furniture of all kinds made from select Koa.

Wing Chong Co., Corner King and Bethel.

Speculation

enriches a few, but impoverishes many. The way to provide for the future is through the saving habit. Start an account with this bank and save systematically. In a few years you will reach financial independence. We pay 4 1/2 per cent on savings.

THE BANK OF HAWAII, LTD.

Capital and Surplus, \$1,000,000.
Fort and Merchants Sts.

Claus Spreckels. Wm. G. Irwin

CLAUS SPRECKELS & CO., BANKERS

HONOLULU : : : : T. M.

San Francisco Agents—The Nevada National Bank of San Francisco.

DRAW EXCHANGE ON SAN FRANCISCO—The Nevada National Bank of San Francisco.

LONDON—Union of London & Smiths Bank, Ltd.

NEW YORK—American Exchange National Bank.

CHICAGO—Corn Exchange National Bank.

PARIS—Credit Lyonnais.

Berlin—Dresdner Bank.

HONGKONG AND YOKOHAMA—The Hongkong and Shanghai Banking Corporation.

NEW ZEALAND AND AUSTRALIA—Bank of New Zealand, and Bank of Australasia.

VICTORIA AND VANCOUVER—Bank of British North America.

TRANSACT A GENERAL BANKING AND EXCHANGE BUSINESS.

Deposits Received, Loans Made on Approved Security, Commercial and Travellers' Credits Issued, Bills of Exchange Bought and Sold.

COLLECTING PROMPTLY ACCOUNTED FOR.

BISHOP & CO. BANKERS

Commercial and Travellers' Letters of Credit issued on the Bank of California and The London Joint Stock Bank, Limited, London. Correspondents for the American Express Company, and Thos. Cook & Son. Interest allowed on term and Savings Bank Deposits.

THE YOKOHAMA SPECIE BANK LIMITED.

Capital (Paid up).....Yen 24,000,000 Reserve Fund.....Yen 15,940,000

HEAD OFFICE, YOKOHAMA.

The bank buys and receives for collection bills of exchange, issues Drafts and Letters of Credit, and transacts a general banking business.

The Bank receives Local deposits and Head Office Deposits for fixed periods.

Local Deposits 2% and upwards for one year at rate of 4% per annum.

Head Office Deposits Yen 25 and upwards for one-half year, one year, two years or three years at rate of 5 1/2% per annum.

Particulars to be obtained on application.

Honolulu Office—67 S. King Street, P. O. Box 168.

M. TOKIEDA, Manager.

The Two Jacks THE FASHION.

The Most Popular Saloon in the City. Jack Scully, Prop. Jack Roberts, Mgr. Hotel Street near Fort. Phone 483

PRIMO BEER IS ALWAYS GOOD AT THE Orpheum Saloon

Auto Fenders, \$2.50 up. Will Examine Gutters free of charge also do Plumbing Work. Lowest Prices. Work Guaranteed. JOHN MATTOIS. 1175 Alakea St.

American Capital Turning To China

NEW YORK, July 26.—That partner of J. P. Morgan & Co., who was most recently admitted to membership, H. P. Davison, has been able to make several public demonstrations, although not intended to be public, of abilities which justified Mr. Morgan in calling this young and somewhat briefly trained man of finance into association with him and his partners.

A few days ago Mr. Davison negotiated for land at Wait and Nassau streets, once occupied by the Jonathan Edwards Church, for one of the trust institutions of New York. That trust company is to erect a cloud-touching office building, matching in the magnitude of its architecture the site of this trust institution's capital and resources. These have already been increased to approximately \$10,000,000, and in that skillful financing Mr. Davison had considerable share.

Some of his associate partners are now on the way to Alaska, contemplating heavy financing there, others are in Paris, still hoping that the political and commercial antagonism to the placing of steel common stock upon the Paris Bourse may be overcome and others are negotiating with leading bankers of Germany, France and England for participation on the part of an American syndicate in the loan China is soon to make.

In the financial section a recent impromptu gathering around the luncheon table of which Mr. Davison was the host has been even more discussed, and discussed with increasing animation as the days have passed, than have the conference discussions of Washington over the tariff. For it is now beginning to be understood that this informal gathering reflects the co-operating purpose of great capital in the United States, and of the Administration at Washington not merely to participate in the industrial and commercial awakening of China, but to insure the sovereign integrity of that empire, and the maintaining of the open door.

CAPITALISTS WILL CO-OPERATE. We have had several intimations recently most of them private and confidential, that the Administration at Washington looks forward expectantly to the enlarging of our commercial relations with China. And there is perfect co-operation with the more important of the American groups of capital. It has been intimated to Secretary Knox that if the Federal Government will make use of its influence with China, so that the United States may stand upon equal footing, then all the capital that is asked for will be furnished.

It is impossible not to infer that the informal meeting with Mr. Davison as host and Mr. Crane as the guest of honor a day or two ago does reflect preliminary preparations for the floating in the United States of some portion of the loan now authorized and an equitable portion of any future loans China may make. And it is also suspected that the Administration at Washington will intimate through Minister Crane to China that in order to secure the best relations with the United States there should be some change in the taxation methods adopted by China, and there must be also a pledge that whatever money is furnished through the sale to the United States of Chinese obligations, is to be expended in the railway, or other public works, which China now contemplates.

THREE GROUPS OF CAPITALISTS. It has sometimes been said that great capital in New York city, in alliance with great capital in Boston, Chicago and Philadelphia, may properly be divided into three groups. One of these is the so-called Morgan group, another that which is identified by the association of the National City Bank with it, and the third is what is now called the Harriman group.

While distinction of this kind was accurate enough a few years ago, it is no longer an accurate classification. The various capital groups are working in co-operation as never before. They are behind the contemplated Pan-American Bank. Representatives of these co-called groups at the invitation of Mr. Davison were able to meet Mr. Crane at this informal gathering around the luncheon table and to congratulate him, and themselves as well, upon President Taft's selection of him as our new Minister to China.

Of course, what was then said was confidential, and yet no more so than the courtesies of a luncheon table compel. The understanding is that the conversation was general and that Mr. Crane did no more than to express his sense of the almost inconceivable possibilities that await the United States through commercial relations with China.

It would not be possible to get together representatives of Mr. Morgan's banking house, of the First National Bank, of the National City Bank and of the greatest of private international bankers who are especially the representatives of E. H. Harriman unless

there were very important financial considerations behind this meeting. It has been especially observed that among the other guests were E. C. Converse, who is president of the trust institution which has recently increased its capitalization and resources to approximately \$10,000,000. Mr. Converse owes his first great fortune to his association with the United States Steel Company and his ability earlier shown in the management of one of the subsidiary companies which made up the steel organization.

Since coming to New York Mr. Converse has taken up banking, has been president of one national bank, and is now president of two trust institutions, one uptown and the other on Wall street.

It has been assumed that the Wall street institution was to have an important part in whatever financial relations the United States may establish with China. Possibly it may be called upon to guarantee, project or in other ways to insure, whatever part of the Chinese loan may be floated in the United States.

WHY JAPAN SUCCEEDED. When Japan at the time of her war with Russia was borrowing in the world's money market her financial statesmen had no difficulty in placing many millions of her obligations in the United States. These were, in fact, really the first obligations of another nation which were floated to any amount in the United States. These obligations were marketed with ease.

But China stands in a different relation to the world of commerce and finance from that which Japan was able to secure before her war with Russia. Japan had awakened; China is awakening. Japan had perfected an admirable legislative and governmental system; China is still autocratic. Japan's financial system, worked out after a study of the fiscal policies of France, Germany and Great Britain, and to some extent of the United States, was approved by the world's great financiers. And while there is not the slightest doubt of the good faith of China, her Government maintaining the same rules of business integrity that her great merchants do, nevertheless the system of taxation and some other features of China's fiscal system may possibly make it more difficult to float at first a Chinese loan in the United States than was the case with Japan.

At the time of the war between Japan and Russia American manufacturers were sending to Manchuria much apparatus and machinery, especially the apparatus that is utilized in building railways. We almost matched in Manchuria our exports there our triumphs in South Africa. Now our manufacturers are certain that if the administration at Washington act in co-operation with American capital then there will be in the course of a few years very large exports of American machinery, railway constructing apparatus, electrical apparatus and possibly some tools such as are employed

THE BEST REMEDY

For Women—Lydia E. Pinkham's Vegetable Compound

Noah, Ky. — "I was passing through the Change of Life and suffered from headaches, nervous prostration, and hemorrhages. Lydia E. Pinkham's Vegetable Compound made me well and strong, so that I can do all my housework, and attend to the store and post-office, and I feel much younger than I really am. Lydia E. Pinkham's Vegetable Compound is the most successful remedy for all kinds of female troubles, and I feel that I can never praise it enough."—Mrs. LIZZIE HOLLAND, North, Ky.

The Change of Life is the most critical period of a woman's existence, and neglect of health at this time invites disease and pain. Women everywhere should remember that there is no other remedy known to medicine that will so successfully carry women through this trying period as Lydia E. Pinkham's Vegetable Compound, made from native roots and herbs. For 30 years it has been curing women from the worst forms of female ills—Inflammation, ulceration, displacements, fibroid tumors, irregularities, periodic pains, backache, and nervous prostration. If you would like special advice about your case write a confidential letter to Mrs. Pinkham, at Lynn, Mass. Her advice is free, and always helpful.

In the great arsenals similar to those which Australia has within a few days ordered in large amounts from American manufacturers.—Philadelphia Ledger.

CASTLE & COOKE LTD., Honolulu, T. H.

SHIPPING AND COMMISSION MERCHANTS. SUGAR FACTORS AND GENERAL INSURANCE AGENTS.

—representing—
Ewa Plantation Co.
Waihua Agricultural Co., Ltd.
Kohala Sugar Co.
Waimea Sugar Mill Co.
Apokaa Sugar Co., Ltd.
Pulani Iron Works of St. Louis.
Blake Steam Pumps.
Westons Centrifugals.
Babcock & Wilcox Boilers.
Green's Fuel Economizer.
Marsh Steam Pumps.
Matson Navigation Co.
Planters Line Shipping Co.
New England Mutual Life Insurance Company of Boston.
Aetna Insurance Co.
National Fire Insurance Co.
Citizens Insurance Co. (Hartford Fire Insurance Co.)
The London Assurance Corporation.

Y. WO SING CO. GROCERIES, FRUITS, VEGETABLES, ETC.

California Butter, 40c lb.; Cooking Butter, 35c lb.; Fresh Dried Fruits, 1186-1188 Nuuanu Street.
Telephone Main 235. Box 853

Your Picture Taken With Greatest Care

HONOLULU ART PHOTO GALLERY. Hotel near Nuuanu.

Aloha Cafe

Junction Beretania and King Streets. MEALS AT ALL HOURS. Best Wines, Liquors and Beers. HARRY KLEMMME, Prop.

M. OHTA CONTRACTOR & BUILDER

Estimates given on all kinds of work. 636 South Hotel St. between Punchbowl & Alapai.

Lewis & Co., Ltd GROCERS.

Phone 249. 169 King St.

PAPER

All kinds WRAPPING PAPERS and TWINES, PRINTING and WRITING PAPERS. AMERICAN-HAWAIIAN PAPER & SUPPLY CO., LTD. GEO. G. GUILD, General Manager Fort and Queen Streets. Honolulu. PHONE 410

Paragon Market F. W. KLEIN, Prop.

SPECIAL DELIVERY SERVICE. Give Us a Trial for Prime Cots. Beretania and Alakea. Phone, 104.

Catton, Neill & Co. LIMITED

Engineers, Machinists, Blacksmiths and Boiler-makers. First class work at reasonable rates.

Oahu Railway TIME TABLE

OUTWARD.
For Waianae, Waialua, Kahuku and Way Stations—7:15 a. m., *8:20 p. m.
For Pearl City, Ewa Mill and Way Stations—7:30 a. m., *9:15 a. m., *11:15 a. m., *12:15 p. m., *5:15 p. m., *9:30 p. m., *11 p. m.
For Wahiawa—7:15 a. m. and *5:15 p. m.
INWARD.
Arrive Honolulu from Kahuku, Waialua and Waianae—8:35 a. m., 6:31 p. m.
Arrive Honolulu from Ewa Mill and Pearl City—7:46 a. m., *8:36 a. m., *10:38 a. m., *1:40 p. m., *4:31 p. m., 6:31 p. m., *7:30 p. m.
Arrive Honolulu from Wahiawa—8:36 a. m., and *5:31 p. m.
The Haleiwa Limited, a two-hour train (only first-class tickets honored), leaves Honolulu every Sunday at 8:22 a. m.; returning, arrives in Honolulu at 10:10 p. m. The Limited stops only at Pearl City and Waianae.

*Daily. †Ex. Sunday. ‡Sunday Only. G. P. DENISON. F. C. SMITH. Superintendent. G. P. & T. A.

★ Envelopes!

by the Million. Call and get our wholesale price.

WALL NICHOLS CO., LTD. Corner Fort and Merchant.

Forcegrowth WILL DO IT.

Autos INDEPENDENT AUTO STAND. King and Bishop Streets. Phone 609.

Carriage manufacturers and repairing in all its branches. NEW OAHU CARRIAGE CO. Queen Street near River.

The J. CARLO LOAN OFFICE Fort Street near Hotel

WE INVITE INSPECTION OF OUR GOODS K. FUKURODA Hotel near Nuuanu. Honolulu

CONSOLIDATED SODA WATER IS ABSOLUTELY PURE. PHONE 71.

Extragood CLOTHES FOR BOYS Silva's Toggery KING near FORT.

SUN CHUNG KWOCK BO LTD CHINESE NEWSPAPER PUBLISHING AND JOB PRINTING. No. 49 Cor. of Smith and Hotel Sts.

Latest Paquin Models FOR The Swellest Gowns Davison YOUNG BUILDING ROOM 72

THE BOOM IS COMING SIGNS —TELL YOU OF IT— Sharp Makes Good Signs Elite Building. Phone 397

PACIFIC PHOTO GALLERY Waverly Block. (17 Hotel St. makai side.) Photography in all its branches, pictures enlarged. Kodak developing and printing a specialty.

IF YOU WISH TO ADVERTISE IN NEWSPAPERS ANYWHERE AT ANYTIME Call on or Write C. C. DAVIS ADVERTISING AGENCY 124 Sansome Street SAN FRANCISCO, CALIF.

CLEANING —AND— DYEING. THE FRENCH LAUNDRY PHONE 1491.

Territorial Board of Immigration OFFICE: 405 Stangenwald Bldg. HONOLULU.

FOR SALE. Solar Water Heaters, 30 to 120 gallons, Galv. Iron Tanks any size and weight, Sheet Metal Work of all kinds made to order on short notice, Water Pipe and Fittings 1-4 to 2 in. in size, Plumbing and Pipe Fitting. Job work given prompt attention. EMMELUTH & CO., LTD. Phone 211. 145 King St.

Empire Chop House (Lately Palace Grill.) Bethel St. Opp. Empire Theatre. Open Day and Night. Cuisine Unsurpassed. BEST MEALS AT ALL PRICES!

K. L. WONG Dealer in Latest Styles, Ladies Dress Goods and Gents Furnishings. NEW GOODS! —NEW GOODS! 32 Hotel Street, Robinson Block, Opposite Beckley.

EUREKA PERFECTION ROOF PAINT The best of all the roof paints. Give it a trial. Send for booklet to P. O. Box 93. THEO. H. DAVIES & CO. Agts.

IN THE DISTRICT COURT OF THE United States, for the Territory of Hawaii. THE UNITED STATES OF AMERICA, Plaintiff, vs. HAIKU SUGAR COMPANY, et al. Defendants.

Action brought in said District Court, and the Petition filed in the office of the Clerk of said District Court, in Honolulu. The President of the United States of America, Greeting: To HAIKU SUGAR COMPANY, a Corporation organized and existing under and by virtue of the Laws of the Territory of Hawaii; R. MIA, whose full and true name is unknown; KAHOPEWAI, (w) wife of R. MIA; W. P. KEPAA, whose full and true name is unknown; ANNE KALAAUHINA (w); B. W. KEPAA, whose full and true name is unknown; PAIA KAHOE; KAIANUI KAHOE, wife of PAIA KAHOE; HOLOWAHINE ANETONO; C. W. ANTONIO, whose full and true name is unknown; MRS. L. K. TILTON, known; L. K. TILTON, whose full and true name is unknown; JOHN KAUIA, WILLIAM MAUI, MARY NIHAU and HELEN WAIMEA, unknown heirs at law of AIWALELE, deceased; HIKOOPAOA; W. B. KI-KOOPAOA, whose full and true name is unknown; HOLAHA; ISERAELEA HOOKAEE; H. KAAIKAUULA, whose full and true name is unknown; M. H. KAAIKAUULA, whose full and true name is unknown; S. KAIO, whose full and true name is unknown; GEORGE BROOKS; KIA, wife of GEORGE BROOKS; G. KAIMOKU, whose full and true name is unknown; KAEEA KAIMOKU, wife of G. KAIMOKU; HOLO; KAIMOKU; M. KAHIAPO, whose full and true name is unknown; KEKAIE; S. P. N. KAHIAPO, whose full and true name is unknown; GEN-KURO CHIMEN; KAPIHE; KAHOE (w); KEKANE (w); MOE-WALE II; MIA; MAKANUI (w); KANAHUNA; W. D. KUKAUA, whose full and true name is unknown; MELEANA MOMONA; HOP HING; DAVID MOMONA; PAKE-KEPA (w); LOUISE WAIALUA; HARRIET WAIANAE, GEORGE KOOLAU and CLARENCE EWA unknown heirs at law of MOMONA, deceased; M. KANIKANIHILA, whose full and true name is unknown; LAHELA, wife of N. KANIKANIHILA; Rev. J. E. KEKUPI, whose full and true name is unknown; MARY DOE, wife of REV. J. E. KEKUPI; KAHOPEWAI (w) wife of R. MIA; MOO; MI; R. K. PUOWAINA, whose full and true name is unknown; A. KAAHA, whose full and true name is unknown, wife of R. K. PUOWAINA; J. NAKUALI, whose full and true name is unknown; JONA NAKILA; KEKAI; ADA KONA, IDA KAU, MOSES LANAI, and ELIZABETH KAUPU, unknown heirs at law of NAKILA, deceased; KALUAHINENUI KAUMAKAOLE; P. KAUMAKAOLE, whose full and true name is unknown, husband of KALUAHINENUI KAUMAKAOLE; JOSEPA KAUMAKAOLE; KAEU (w), POKA (h), LUCY WAIKIKI, ROSE MAKIKI, AUGUSTUS KALIHU, ALSTON PALAMA, unknown heirs at law of NIAUHOE, deceased; NIAUHOE KEKUPI; AA KEKUPI; OINA; PALAUOLELO; KAHAKUI WAIWAILOLE, husband of KAHAKUI; KAAHAANUI; AIONA, husband of KAAHAANUI; PAIA KAHOE; NAMA LEIALOHA; PILI-

And you are hereby notified that unless you appear and answer as above required, the said Plaintiff will take judgment of condemnation of the lands described in the Petition herein and for any other relief demanded in the Petition.

And you are hereby notified that unless you appear and answer as above required, the said Plaintiff will take judgment of condemnation of the lands described in the Petition herein and for any other relief demanded in the Petition.

Witness the Honorable SANFORD B. DOLE, Judge of said District Court, this 12th day of July in the year of our (SEAL) Lord one thousand nine hundred and nine and of the independence of the United States the one hundred and thirty-fourth. (Sd.) A. E. MURPHY, Clerk. (Endorsed) "No. 61. DISTRICT COURT OF THE U. S. for the Territory of Hawaii. THE UNITED STATES OF AMERICA vs. HAIKU SUGAR COMPANY, et al. SUMMONS. ROBERT W. BRECKONS, Plaintiff's Attorney." UNITED STATES OF AMERICA,) Territory of Hawaii City of Honolulu.) I, A. E. MURPHY, Clerk of the District Court of the United States of America, in and for the Territory and District of Hawaii, do hereby certify the foregoing to be a full, true and correct copy of the original Petition and Summons in the case of THE UNITED STATES OF AMERICA vs. HAIKU SUGAR COMPANY, et al., as the same remains of record and on file in the office of the Clerk of said Court. IN WITNESS WHEREOF, I have hereunto set my hand and affixed the seal of said District Court this 12th day of July, A. D. 1909. (SEAL) A. E. MURPHY, Clerk of United States District Court, Territory of Hawaii.

PILI; PAKA; ELIZABETH PAHIA; YOUNG MEN'S SAVINGS SOCIETY LIMITED, a corporation organized and existing under and by virtue of the Laws of the Territory of Hawaii; KAEU; J. H. HANA, whose full and true name is unknown; KUAERU; MOONONIO; KAILI (w) and KOEU POKA, heirs at law of POKA, deceased; S. M. PAAHAO, whose full and true name is unknown; L. K. WAIPA, whose full and true name is unknown; PULEHI; KAHEKULANI, wife of PULEHI; KIKO; MAKANUI (w); MAKANUI (w) wife of R. MIA; KANAHUNA; HOOMANA; KALUA, (w), wife of HOOMANA; KAHOOMANA; KAIPU; HOOKANO, wife of KAIPU; D. KEKALOHE, whose full and true name is unknown; KUAPIU, wife of D. KEKALOHE; PAIA KAHOE; KAIANUI, wife of PAIA KAHOE; HOLOWAHINE (w); K. WAIWAILOLE, whose full and true name is unknown; PAIA; KAIANUI, wife of PAIA; KUAPIU (w); KANE KEALOHA (w); KEALOHA and HOLOWAHINE, heirs at law of KAOMBHA, deceased; KALIA; KALAAUALA; J. KANAKAOLE; KEKIAE; J. PAIWI KEPOU, whose full and true name is unknown and KEKAHUNA, (w) heirs at law of KEPOU, deceased; A. KUHAULUA, whose full and true name is unknown; M. MAKEE, whose full and true name is unknown; KUHO; KUPA; M. KAPIHE, whose full and true name is unknown; CLARA WHITE; JOSEPHINE BLUE; SAMUEL BROWN, JOSHUA PURPLE unknown heirs at law of KEKALOHE deceased; KEAWE (h) and KALELEAMAU, heirs at law of WAHIELOA, deceased; ELENA II; KUPA PIOHIA; KAHUA PIOHIA, wife of KUPA PIOHIA; KAUKAU KANEI-KALA; JACK PIOHIA; KEOMAKA PAPOKO; L. KEOMAKA, whose full and true name is unknown, husband of KEOMAKA PAPOKO; HELEN NAKILA HANOHAHO; SOLOMON HANOHAHO, husband of HELEN NAKILA HANOHAHO; J. B. WATSON, whose full and true name is unknown; C. P. WEST, whose full and true name is unknown; J. B. WATSON and C. P. WEST doing business under the firm name and style of WATSON & WEST; KEONI MALIKO; KAONOHI, wife of KEONI MALIKO; AKIONA; PUAAKUNI; NAINA; KALA KIKOOPAOA; HAINA; WAHINEWAIA; PAOAOA; J. P. KAPIHE, whose full and true name is unknown; ELVIRA KONA; MILDRED WAIKEA; MARION PUUEO; MARIE PAHOA; KATHLEEN HAKALAU; LILINOE HALAWA; SARAH LAHAINA; CHARLOTTE MANELE; EDITH MAUNALEI; GRACE KIHAI; FRANCES WAIHEE; MABEL PAIA; ELSIE HONOMU; LULU MAKENA; EMMELINE HANAELI; CHARLES LHUE; ROBERT KAUPU; CHRISTIAN HALEAKALA; OTTO WAIWAILOLE; PAUL HUALALAI; WALTER KOLOA; EMIL ALAPAI; FREDERICK AALA; MANUEL PAUOA; WILFRED NAHUKU; ALEXANDER KILAUHA; HAROLD KAWILOA; VINCENT IAO; HERBERT NANAKULI; ANTONIO PUNIWA; CLIFTON HAIKU; FERDINAND ULUMALU; ANTHONY PUULO; PETER HUELO, unknown owners and claimants, MALAEA POO, LEIALOHA KUA, JULIAN NOHO, ROSALIE MOKU, MALCOLM WAI, JULIA KAMAKA, and BENTON AIEA, unknown heirs at law of KAIMOKU, deceased; HOOLAPA; Defendants.

And you are hereby directed to appear, and answer the Petition in an action entitled as above, brought against you in the District Court of the United States, in and for the Territory of Hawaii within twenty days from and after service upon you of a certified copy of Plaintiff's Petition herein, together with a certified copy of this Summons.

And you are hereby notified that unless you appear and answer as above required, the said Plaintiff will take judgment of condemnation of the lands described in the Petition herein and for any other relief demanded in the Petition.

Witness the Honorable SANFORD B. DOLE, Judge of said District Court, this 12th day of July in the year of our (SEAL) Lord one thousand nine hundred and nine and of the independence of the United States the one hundred and thirty-fourth. (Sd.) A. E. MURPHY, Clerk. (Endorsed) "No. 61. DISTRICT COURT OF THE U. S. for the Territory of Hawaii. THE UNITED STATES OF AMERICA vs. HAIKU SUGAR COMPANY, et al. SUMMONS. ROBERT W. BRECKONS, Plaintiff's Attorney." UNITED STATES OF AMERICA,) Territory of Hawaii City of Honolulu.) I, A. E. MURPHY, Clerk of the District Court of the United States of America, in and for the Territory and District of Hawaii, do hereby certify the foregoing to be a full, true and correct copy of the original Petition and Summons in the case of THE UNITED STATES OF AMERICA vs. HAIKU SUGAR COMPANY, et al., as the same remains of record and on file in the office of the Clerk of said Court. IN WITNESS WHEREOF, I have hereunto set my hand and affixed the seal of said District Court this 12th day of July, A. D. 1909. (SEAL) A. E. MURPHY, Clerk of United States District Court, Territory of Hawaii.

Witness the Honorable SANFORD B. DOLE, Judge of said District Court, this 12th day of July in the year of our (SEAL) Lord one thousand nine hundred and nine and of the independence of the United States the one hundred and thirty-fourth. (Sd.) A. E. MURPHY, Clerk. (Endorsed) "No. 61. DISTRICT COURT OF THE U. S. for the Territory of Hawaii. THE UNITED STATES OF AMERICA vs. HAIKU SUGAR COMPANY, et al. SUMMONS. ROBERT W. BRECKONS, Plaintiff's Attorney." UNITED STATES OF AMERICA,) Territory of Hawaii City of Honolulu.) I, A. E. MURPHY, Clerk of the District Court of the United States of America, in and for the Territory and District of Hawaii, do hereby certify the foregoing to be a full, true and correct copy of the original Petition and Summons in the case of THE UNITED STATES OF AMERICA vs. HAIKU SUGAR COMPANY, et al., as the same remains of record and on file in the office of the Clerk of said Court. IN WITNESS WHEREOF, I have hereunto set my hand and affixed the seal of said District Court this 12th day of July, A. D. 1909. (SEAL) A. E. MURPHY, Clerk of United States District Court, Territory of Hawaii.

Witness the Honorable SANFORD B. DOLE, Judge of said District Court, this 12th day of July in the year of our (SEAL) Lord one thousand nine hundred and nine and of the independence of the United States the one hundred and thirty-fourth. (Sd.) A. E. MURPHY, Clerk. (Endorsed) "No. 61. DISTRICT COURT OF THE U. S. for the Territory of Hawaii. THE UNITED STATES OF AMERICA vs. HAIKU SUGAR COMPANY, et al. SUMMONS. ROBERT W. BRECKONS, Plaintiff's Attorney." UNITED STATES OF AMERICA,) Territory of Hawaii City of Honolulu.) I, A. E. MURPHY, Clerk of the District Court of the United States of America, in and for the Territory and District of Hawaii, do hereby certify the foregoing to be a full, true and correct copy of the original Petition and Summons in the case of THE UNITED STATES OF AMERICA vs. HAIKU SUGAR COMPANY, et al., as the same remains of record and on file in the office of the Clerk of said Court. IN WITNESS WHEREOF, I have hereunto set my hand and affixed the seal of said District Court this 12th day of July, A. D. 1909. (SEAL) A. E. MURPHY, Clerk of United States District Court, Territory of Hawaii.

Witness the Honorable SANFORD B. DOLE, Judge of said District Court, this 12th day of July in the year of our (SEAL) Lord one thousand nine hundred and nine and of the independence of the United States the one hundred and thirty-fourth. (Sd.) A. E. MURPHY, Clerk. (Endorsed) "No. 61. DISTRICT COURT OF THE U. S. for the Territory of Hawaii. THE UNITED STATES OF AMERICA vs. HAIKU SUGAR COMPANY, et al. SUMMONS. ROBERT W. BRECKONS, Plaintiff's Attorney." UNITED STATES OF AMERICA,) Territory of Hawaii City of Honolulu.) I, A. E. MURPHY, Clerk of the District Court of the United States of America, in and for the Territory and District of Hawaii, do hereby certify the foregoing to be a full, true and correct copy of the original Petition and Summons in the case of THE UNITED STATES OF AMERICA vs. HAIKU SUGAR COMPANY, et al., as the same remains of record and on file in the office of the Clerk of said Court. IN WITNESS WHEREOF, I have hereunto set my hand and affixed the seal of said District Court this 12th day of July, A. D. 1909. (SEAL) A. E. MURPHY, Clerk of United States District Court, Territory of Hawaii.

Witness the Honorable SANFORD B. DOLE, Judge of said District Court, this 12th day of July in the year of our (SEAL) Lord one thousand nine hundred and nine and of the independence of the United States the one hundred and thirty-fourth. (Sd.) A. E. MURPHY, Clerk. (Endorsed) "No. 61. DISTRICT COURT OF THE U. S. for the Territory of Hawaii. THE UNITED STATES OF AMERICA vs. HAIKU SUGAR COMPANY, et al. SUMMONS. ROBERT W. BRECKONS, Plaintiff's Attorney." UNITED STATES OF AMERICA,) Territory of Hawaii City of Honolulu.) I, A. E. MURPHY, Clerk of the District Court of the United States of America, in and for the Territory and District of Hawaii, do hereby certify the foregoing to be a full, true and correct copy of the original Petition and Summons in the case of THE UNITED STATES OF AMERICA vs. HAIKU SUGAR COMPANY, et al., as the same remains of record and on file in the office of the Clerk of said Court. IN WITNESS WHEREOF, I have hereunto set my hand and affixed the seal of said District Court this 12th day of July, A. D. 1909. (SEAL) A. E. MURPHY, Clerk of United States District Court, Territory of Hawaii.

A SOUVENIR

A souvenir of Hawaii makes an acceptable gift the whole year round. The line of curios and novelties at the Woman's Exchange is the largest in the city.

Woman's Exchange

Hotel and Union Streets.

W.G. Irwin & Co., Ltd

SUGAR FACTORS, COMMISSION AGENTS

Wm. G. Irwin, President and Manager
John D. Spreckels, First Vice-President
W. M. Giffard, Second Vice-President
M. M. Whitney, Treasurer
Richard Ivers, Secretary
D. G. May, Auditor

AGENTS FOR

Oceanic Steamship Co., San Francisco, Cal.
Hawalein Locomotive Works, Philadelphia, Pa.
Hakalau Plantation Co., Hilo Sugar Company, Honolulu
Hutchinson Sugar Plantation Co., Kilauea
Sugar Plantation Co., Olowalu
Company, Paauhau
Sugar Plantation Co., Waimanalo
Sugar Co.

THE ALEXANDER YOUNG CAFE

Manufacturers its own SODA WATER with the very latest improved machinery and uses distilled water in the process.

There's none so good.

Honolulu Iron Works

STEAM ENGINES, SUGAR MILLS, JOILERS, COOLERS, IRON, BRASS AND LEAD CASTINGS.

Machinery of Every Description Made to Order. Particular Attention paid to ship's Blacksmithing. Job Work Executed on Short Notice.

NEW ENGLAND MUTUAL LIFE

INSURANCE CO. of Boston, Massachusetts.

New Policy

The contract embodies in an absolutely COMPLETE and PERFECT form, the principle of strictly MUTUAL life insurance.

CASTLE & COOKE, LTD.

AGENTS.

Also representing

Aetna Insurance Co.
National Fire Insurance Co.
Citizens Insurance Co.
The London Assurance Corporation.

Puritan Butter

New LoT

HENRY MAY & CO., LTD AGENTS.

PARAGON PAINT AND ROOFING CO

PETER HIGGINS, Manager.

Estimates Free of Charge.

PHONE 60.

Office No. 639 Bethel St. near Hotel.

Artistic Frames

Pacific Picture Frame Co.
Phone 222. Nuuanu nr Hotel.

NEW ADVERTISEMENTS.

Bank of Hawaii Page 7
Hawaiian News Page 4
H. Hackfeld & Co. Page 4
Ahana & Co. Page 4
Hawaiian Trust Co. Page 1
Felix Turro Page 5
Probate Notice Page 5
Empire Theater Page 5
Chamber of Commerce Page 5

THE WEATHER.

Local Office, U. S. Weather Bureau, Young Building.

Honolulu, T. H., Aug. 17, 1909.
Temperatures, 5 a. m.: 5 a. m.: 10 a. m.; and morning minimum.
78; 75; 72; 70; 72.
Barometer readings, absolute humidity (grains per cubic foot); relative humidity and dew point at 8 a. m.: 30.07; 67.30; 72; 65.
Wind: Velocity and direction at 6 a. m.; 8 a. m.; 10 a. m.; and noon: 3 NE; 11 NE; 3 NE; 3 NE.
Rainfall during 24 hours ending 8 a. m.: .05.
Total wind movement during 24 hours ended at noon: 234 miles.

NEWS IN A NUTSHELL.

Paragraphs That Give Condensed News of the Day.

Noite's is the business man's cafe. Mrs. Miriam Kaloieni was a passenger to Hilo aboard the steamer Mauna Kea today.

The Leading Hat Cleaners make a specialty of cleaning and blocking Panama hats.
Secretary and Mrs. E. A. Mott-Smith celebrate their thirteenth wedding anniversary.

Meals are served at Noite's from 6 a. m. to 7:30 p. m.
John Deter will leave in the Alameda for a visit of six months to his parents in Greece.

Librarian Lydecker, on returning to the Archives office after his mainland tour, found that the work in his absence had been ably handled by John H. Wise.

The best soap for home laundry use is Crystal White laundry soap. Ask your grocer for H. H. Hackfeld & Co. wholesale distributors.

Judge Robinson is still engaged on the water pipe injunction suit of Oahu Railway & Land Co. against James Armstrong and L. L. McCandless.

The annual meeting of the Honolulu Chamber of Commerce will be held tomorrow afternoon at 2 o'clock in the Stangenwald Building.

Midday luncheon at Noite's is served quickly. Everything first class, clean and neat.

New line of materials for gentlemen's suits just arrived in the Alameda for W. W. Ahana Co., the leading tailors. Call at 62 S. King street and see these beautiful materials.

"Forcegrowth" is the magic fertilizer that makes lawns, fern and plants grow luxuriantly. Sold in 60c and \$1.25 bags by E. O. Hall & Son. Distributing agents.

Sibyl Campbell Reid was honored at every appearance in Spanish dances at the Empire theater last night. She will appear in Scottish dances in costume tonight, wearing the medals she has won in that specialty.

Miss Ruth Farley, a niece of Mrs. Massey at Kanawhee, Wn. July 22. Massey at Wenatchee, Wn., July 23.
Rev. John W. Wadman will leave in the China to attend the annual meeting of the Methodist Mission Board and solicit money for the Honolulu church building fund.

George Phillips, formerly of Lahaina, died at the Queen's Hospital yesterday afternoon. Funeral services will be held at Williams' undertaking parlors at 4 o'clock this afternoon, the burial to be in I. O. O. F. plot, Nuuanu cemetery.

When you are no longer young, the opportunities for having a comfortable old age will be few, unless you make proper plans now. Life insurance guarantees comfort. See the Hawaiian Trust Company, Ltd. We are agents.

Salaries people should save money systematically. Start a savings account today with the Bank of Hawaii and in a few years you will be surprised to see how much you have accumulated. 4-1/2 per cent interest paid on all savings.

The Bishop Trust Company invites small accounts as well as large ones. They want the small property owner or investor to see how much it is to his advantage to do business through a good trust company. Call at their office on Bethel street. A consultation will cost you nothing.

Whether you want a King James bible, one of the English revised version of 1881, or the new American revised version, we have it in the best bindings. We carry also a complete line of prayer books. Hawaiian News Co., Young Building.

At the meeting of the committee in the Governor's office last night, some changes were made in the original plan for showing the Congressional visitors over the islands. Wishes of the Kaula people were conceded to, and Mr. Shingle had his way about giving the visitors an opportunity to see Kona. The Chamber of Commerce dinner was fixed for Wednesday, September 15. On Saturday, September 4, the dance at the Young Hotel will be held. Tuesday afternoon, September 14, was left open for a private

SENTENCE MODIFIED

JURY THAT CONVICTED TSDOME RECOMMENDED HIM TO LENIENCY OF COURT.

Hatsutaro Tsudome was found guilty of violating the Edmunds Act by the Federal jury yesterday afternoon, the verdict containing a recommendation to leniency. Judge Woodruff this morning, according to the desire of the jury, cut six months off the recently adopted sentence for offenders in this class, giving Tsudome eighteen months' imprisonment.
Tsudome was placed on trial today for the offense above mentioned, District Attorney R. W. Breckons prosecuting and Charles F. Chillingworth defending. The jury consists of Frederick E. Steere, Philip Rice, James Cowan, Joseph A. Gilman, J. W. Young, Wm. H. McInerney, Geo. S. Harris, Luther Severance, Herbert M. Leonard, James K. Merseberg, Henry West and Richard J. Lyman.

James A. Rath, superintendent of Palama Mission, was on motion of Mr. Breckons excused from the jury for the rest of the term. Although not a legal disqualification, the fact that he holds a policeman's commission—though he has never made an arrest—made Mr. Rath liable to be challenged in many cases as he was in the Tsudome case.

NEARING THE END.

Persons who have been tied down to their desks through the summer will find out in the winter that the week they should have spent at Haliwa would have kept them in trim for the heavy work. The season is nearing the close and there is yet time for the brain worker to recuperate at this popular hotel. There is no place in the Territory offering greater inducements in the way of meals, service and accommodations. It is a short run by auto, and a pleasant ride on the trains of the Oahu Railway, only two hours ride through some remarkably interesting country.

PARTITION CONTEST

An answer has been filed in the partition suit of Fanny Strauch and P. E. R. Strauch against G. H. Houulu Kilia and others by defendants G. H. and Elizabeth Kilia.
They deny that Fanny Strauch and defendants G. H. Kilia and Kealoa Kilia are the owners as tenants in common of certain premises described in a schedule attached to the petition, alleging the fact to be that the premises are owned by Fanny Strauch and the two defendants answering. G. Houulu Kilia and his wife Elizabeth, as tenants in common, Fanny Strauch and G. H. Houulu 10-24ths each and Elizabeth Kilia 4-24ths, and these defendants deny that their co-defendant Kealoa Kilia has any right, title or interest in or to said premises.

Further they deny that the premises are incapable of being partitioned, and that it is for the interests of all concerned that the premises be sold at public auction and the proceeds divided between the parties interested.

They allege that the property is capable of being divided in kind fairly, and according to the respective interests of the parties, and they further allege that they are desirous of holding their interests in and to said premises, to wit 14-24ths thereof, in common and that they object to any sale of their interests.

Major Richard (Dick) Oliver formerly military instructor at the Kamehameha Schools and a prominent alumnus of the schools, has returned to his native town from an extended stay in Los Angeles.

Miss Hill, Kakaako Mission nurse, was this morning operated on for appendicitis and is now doing well. Doctors Judd, Mackall and Hobdy performed the operation.

Governor Frear this morning authorized Treasurer Conkling to deposit \$50,000 of government funds in the savings department of Bishop & Co. It is part of the special income tax receipts.

Claudius H. McBride, in tau hat and frock coat, this morning performed a vice gubernatorial function in returning, on behalf of Governor Frear, the call of Acting Consul George F. Davies of Great Britain and Ireland.

The Governor's annual report to the Secretary of the Interior was assigned to the mail leaving for the Coast today.

Governor Frear today signed a land patent, a homestead lease and a forfeiture of homestead.

Through their attorney, Chang Kim, the Chinese rice growers of Kalaupuni beach yesterday afternoon executed the papers giving the municipality the right of way for relocation of the belt road at that place. They agree to remove their buildings and threshing floors off the route for \$2340. City and County Engineer Gere negotiated the bargain. It is probable that the Board of Supervisors will tonight authorize a call for bids to build the new road.

SUGAR QUOTATIONS

Date	Per Lt.	Per Ton.	Price.
June 14	5.92 cents.		10 shillings 5 1-4 pence.
June 15	5.92 cents.		10 shillings 6 pence.
June 21	3.95 cents.		10 shillings 5 1-4 pence.
June 22	3.92 cents.		10 shillings 5 1-4 pence.
July 2			10 shillings 6 3-4 pence.
July 6			10 shillings 7 1-2 pence.
July 12			10 shillings 9 pence.
July 16	3.935 cents.		10 shillings 9 pence.
July 20	3.95 cents.		10 shillings 9 pence.
July 21	3.95 cents.		10 shillings 9 pence.
July 24	3.99 cents.		10 shillings 9 pence.
July 25	3.99 cents.		10 shillings 9 pence.
July 27	3.95 cents.		10 shillings 9 pence.
July 28	3.95 cents.		10 shillings 9 pence.
July 29	4.015 cents.		10 shillings 9 pence.
July 30	4.015 cents.		10 shillings 9 pence.
Aug. 2	4.02 cents.		10 shillings 9 pence.
Aug. 5	4.05 cents.		10 shillings 9 pence.
Aug. 4	4.05 cents.		10 shillings 9 pence.
Aug. 10	4.05 cents.		10 shillings 9 pence.
Aug. 11	4.05 cents.		10 shillings 9 pence.
Aug. 12	4.05 cents.		10 shillings 9 pence.
Aug. 13	4.05 cents.		10 shillings 9 pence.
Aug. 16	4.05 cents.		10 shillings 9 pence.

SCRIBE LEADS NEW COUPLE TO SQUASH

They do things different in the Colonies.
A bride and groom, traveling to the Alaska-Yukon Exposition, arrived in Honolulu this morning in the S. S. Makura and proceeded to do the town. Feeling like a "lemon squash" they walked into a place labeled "saloon" and called for the same. They were much disappointed and somewhat disgusted when the found the lady could not be served.

Next they took an electric "tram," asking the conductor to put them off at the "monument;" and when they were disembarked at Kamehameha's statue in front of the Judiciary building they felt that they had been charged a "tippence-apepny" fare for nothing, for they had wished to see Captain Cook's monument.

At last a reporter got hold of them, for they were casually inquiring the right back-rates to the Volcano (Diamond Head being mistaken for Pele's cook-house) and their gratitude was almost overwhelming when they were shown where they could get their "lemon squash" and informed concerning the places to see near Honolulu.

HUDSON CAR LIKE FOREIGN MACHINE

The arrival yesterday of the Hudson car has created a great deal of interest along automobile row. The salesrooms of the Pioneer Automobile Company were crowded all day with interested motor car enthusiasts. Finished in dark red, with long, racy body lines and an extra long hood, the new arrival resembles one of the smaller of the foreign racing cars.

In an interview on the production of such cars as this, Calvin Eib, sales manager of the Pioneer Automobile Company, said:

"Twelve years of motor car building and big production make possible the Hudson '20.' It is simply the result of the experience of all the manufacturers, owners and users of cars of the last twelve years. There is nothing experimental about the Hudson '20'—nothing untried.

"There is not a mechanical feature of the '20' that has not been proved out thoroughly in scores of successful cars.

"For instance—the Renault type of motor has been found satisfactory wherever used. Renault motors are the pride of France; the selective, sliding gear type of transmission has been adopted by all high-grade cars; nearly all high-grade cars use a pressed steel frame, drop forged I-beam front axle, water cooling system, leather-faced clutch, and so on. The semi-floating type of rear axle you find in the Hudson '20' has been tried out on many of the best cars made both in America and Europe. The tendency on all cars has been towards larger wheels; 32-inch wheels are large for a car of the type of the Hudson '20.' The two bearing crank shaft has been used on the Chalmers-Detroit and on many of the leading high-grade foreign cars with entire success. Four cylinders cast iron block also have given satisfaction on many of the best cars made. The pump circulated splash lubricating system has been a feature of many of the most successful cars, such as the Chalmers-Detroit and the Oldsmobile. And so it is all through this unusual car—nothing experimental—nothing untried.

"We do not have to spend money experimenting. The men who are responsible for the Hudson '20,' and other men in the automobile business, have done the experimenting in the last twelve years. It is only necessary to profit by their experience and this we have done."—Examiner.

BOOZE AND GASOLINE MAKE DEATH POTION

There have been several auto accidents in the past few nights, one man being knocked senseless, a buggy containing two women being run into, and a vegetable wagon being upset. Joy riders are at large again. In this connection there are several drivers of cars who of late have been observed tanking up early in the evenings. They seem to think it as necessary to pour booze down their throats as to put gasoline in their machines. The result should make glad the hearts of undertakers and cemetery associations.

Last night at 10:30 o'clock, precisely, for the bell of the cruiser Bufalo was just knocking out "five bells," a red shoe-chariot shot at the rate of thirty miles an hour out Punchbowl street on to the esplanade opposite the Inter-Island coal-bunkers, immediately ahead of a Rapid Transit car as it was coming to a stop.

Had the electric car stopped thirty feet farther along there would have been souls in the hereafter, for breakfast. It is difficult to catch auto numbers at night; while hacks are compelled to carry numbers on their lamps, autos are privileged for escape.

OCEAN BREEZES

Lying in the Mid Pacific, swept by the trade winds which blow across leagues of ocean and are absolutely pure, with the mountains from whose higher altitudes cool breezes descend upon by the city, with its delightful climate all the year around, is one of the many reasons why Honolulu is being recognized as one of the world's most healthful places in which to live. There are no biting, cold winds, but, instead, refreshing, health giving trade breezes that make every person want to return—especially if he has been at that elevation where he can get a glimpse of Diamond Head in its majesty on the left, the panoramic view of the city on the right, the beautiful ocean view and its exhilarating breezes on the south and the mountains with their picturesque scenery on the north; all of which can be obtained from any point on Kaimuki where choice, residential property is being sold by the Real Estate Exchange.

Governor Frear leaves for Kauai this evening with Messrs. Leighton and Mendenhall, the Federal hydrographers, Mrs. Leighton and Professor Mead of the University of Chicago. Superintendent Marston Campbell may follow the party on Thursday. It is expected that much of the tour of the conservation expedition on the Garden Island will be made on foot.

NEW GOODS Are Arriving Fast

A Wealth of New Goods arriving by every steamer. These goods were personally selected by our Mr. Sachs, who is now in New York picking up the newest conceits in the world of fashion, as well as standard lines for every department. Mr. Sachs has been engaged in this work for the past two months and the new goods now arriving are the first of his selection. The expert buying knowledge of our Mr. Sachs is ample assurance to our patrons that they will have the very latest and the best that the world's markets afford.

N.S. SACHS DRY GOODS CO.

Level Up Your Lot

Soil, black or Waianae sand, coral or rock furnished to fill up depressions or build up terraces.

Also men to do the work.

P. M. POND

PHONE 890. P. O. BOX 162.

ARE YOU COME HERE

the man who is suffering from foot troubles? You think you have a broken arch or numerous other complaints?

Regal Shoe Store

McCandless Building. Corner King and Bethel.

Draying and Heavy Teaming

PHONE 295

Nustace-Peck Co. LTD.

SAME OLD NUMBER 63 QUEEN STREET.

We are always equipped to handle any thing in the draying line, from a keg of nails to a sugar mill.

SPECIAL ATTENTION PROMPT DELIVERY

ALWAYS in the LEAD

"JEWEL" Stoves and Ranges

GURNEY Refrigerators and Ice Boxes

Household Millinery

We do not advocate using our goods for this purpose, but our line is such a representative one that it fulfills every requirement of the up-to-date housekeeper.

W. W. Dimond & Co., Ltd.

53, 55, 57 King Street Honolulu